



LSU

SOCCER

NCAA TOURNAMENT
2007 • 2008 • 2009 • 2011 •
2015 • 2018 • 2021 • 2022

SEC TOURNAMENT CHAMPIONS
2018

SEC RUNNERS-UP
2008 • 2009 • 2011

SEC WEST CHAMPIONS
2007 • 2008 • 2009 • 2011

10

vs. No. 22 Georgia

Thursday, September 21
Athens, Ga. (Turner Soccer Complex)
5 p.m. CT

2023 SCHEDULE

DATE	OPPONENT	LOCATION	RESULT/TIME
------	----------	----------	-------------

AUGUST

17	South Florida	Baton Rouge, La.	L, 0-1
20	Southern Miss	Baton Rouge, La.	W, 4-1
24	Texas	Austin, Texas	W, 3-1
27	Southern	Baton Rouge, La.	W, 5-0
31	Wisconsin	Madison, Wi.	L, 0-3

SEPTEMBER

3	TAMUC	Baton Rouge, La.	W, 6-0
7	Pepperdine	Baton Rouge, La.	T, 2-2
10	NSU	Baton Rouge, La.	W, 2-1
15	Ole Miss*	Oxford, Miss.	L, 0-1
21	Georgia*	Athens, Ga.	5 p.m.
24	Miss. State*	Baton Rouge, La.	6 p.m.
29	Florida*	Baton Rouge, La.	6 p.m.

OCTOBER

5	South Carolina*	Columbia, SC	6 p.m.
8	Tennessee*	Baton Rouge, La.	4 p.m.
13	Alabama*	Tuscaloosa, Ala.	7 p.m.
19	Arkansas*	Baton Rouge, La.	6 p.m.
22	Auburn*	Auburn, Ala.	4 p.m.
26	TAMU*	Baton Rouge, La.	7:30 p.m.

29	SEC Tournament	Pensacola, Fla.	TBA
----	----------------	-----------------	-----

NOVEMBER

10	NCAA Tournament	TBA	TBA
----	-----------------	-----	-----

On Air

TV: SEC Network+

Play by Play, Jeff Dantzler
Analyst, Tatum Hodge

Who To Contact

Assistant Communications

Director/Soccer Contact

Alyssa Leal
Email: aleal3@lsu.edu
Cell: 504-373-7428

Connect with LSU Soccer

@LSUSoccer

LSUSoccer

@LSUSoccer

The Matchup

Series History - Georgia

The Tigers are 7-11-4 against the Bulldogs and are 1-7-2 when playing in Athens. The last time the two teams met was in the 2021 SEC Tournament, where LSU advanced 5-4 on PK's after the two ended in a 0-0 draw in the first 90 minutes. LSU and Georgia also met during the regular season in 2021, when the Bulldogs defeated the Tigers in a 2-1 overtime win in Baton Rouge.

Last Time On The Pitch

The LSU Soccer team (5-3-1) were defeated by the Ole Miss Rebels (5-2-1) by a score of 1-0 on Friday night in the Ole Miss Soccer Stadium.

The game opened with high energy from both teams as they went up and down the pitch seeking an opening goal. The Tigers had the first shot on goal in the 13th minute as Ava Galligan shot on a free kick from outside the box that was saved by Ole Miss goalkeeper Shu Ohba. The Rebels returned the energy on the other side of the field as Meredith King had a shot off target in the 17th minute.

In the 20th minute, Gili Johnson received a cross in the box and sent a first time shot on goal that was blocked by the outstretched arm of an LSU defender, which saw the referee award a penalty kick to Ole Miss. Brady stepped up to the spot for the Rebels and placed the ball into the bottom left corner to make it 1-0 on the night.

Despite going one goal down, the Tigers never lost their energy and pressed on looking for an equalizer. LSU had shots in the 21st, 24th and 29th minute, but could not direct them on goal. Forward Mollie Baker sent in a strong left-footed effort on frame in the 40th minute, but it was parried wide by Ohba. Ohba collected a long-ranged effort from Raelyn Prince in the 42nd minute to finish the half with three saves. The Rebels took the 1-0 lead into halftime in Oxford.

The second half played out similarly to the first with the Tigers dominating possession, but unable to convert in the final third. Neveah Johnson had a strong header blocked by an Ole Miss defender in the 52nd minute. Five minutes later in the 58th minute, Ohba denied a shot on goal by Baker to keep the match 1-0.

In the 61st minute, Swift made a crucial save that kept the Tigers in the match. Against the run of play, Ole Miss broke on the counterattack. Brady bursted ahead of the LSU defense and tried poking a shot past Swift, who rushed forward and blocked the shot with an outstretched leg. Swift would pick up two more saves in the 64th and 72nd minutes to finish the night with four saves.

Ohya picked up another save in the 75th minute as she caught a powerful free kick taken by Swift. The Tigers pressed on until the end looking for an equalizer but could break the defense that the Rebels set in the box. The final chance of the night came in the final minute as Hermansdottir headed the ball from the top of the box that was collected by Ohya for her seventh and final save of the night.

LSU outshot Ole Miss by a margin of 22-9, with the Tigers having seven shots on goal compared to the Rebels' five. LSU won the possession battle by a margin of 55% to Ole Miss's 45%. The Tigers controlled the tempo throughout the night but were unable to convert their chances in the final third.

The 2023 Squad

This year, the squad is composed of nine seniors, three juniors, 11 sophomores and five freshmen. 21 Tigers return from the 2022 roster who made a run to the second round of the NCAA Tournament. Fifth-year veterans Mollee Swift and Maya Gordon are key returners as they lead the squad as captains this upcoming season. Also returning are seniors Rammie Noel, Taylor Dobles, Jordan Johnson, Abby Smith, Britney Bertram, Mollie Baker and Bella Zanotelli, who bring experience and depth to the squad.

There are seven new faces on the 2023 squad, including freshman Caley Swierenga, Andrea Ilijkic, Ava Galligan, Brielyn Knowles and Alyson Campbell. New to the squad this year is also sophomore transfer out of Oklahoma, Hali Hartman, and walk-on Sarah Portis.



Quick Facts

UNIVERSITY

Location	Baton Rouge, La.
Founded	1860
Enrollment	31,414
Nickname	Tigers or Fighting Tigers
Facility	LSU Soccer Stadium (2,197)
All-Time Home Record	147-87-33
Mascot	Mike VII (Live Bengal Tiger)
Colors	Purple and Gold
Conference	Southeastern
Affiliation	NCAA Division I
President & Chancellor	William Tate IV
Faculty Athletics Representative	Dr. Lori Martin

ATHLETIC DEPARTMENT

Director of Athletics	Scott Woodward
Executive Deputy AD/Executive Director of External Relations	Verge Ausberry
Executive Deputy AD/COO	Kelli Zinn
Sr. Associate AD/Facilities & Project Development	Emmett David
Sr. Associate AD/Athletics Facilities Management	Dan Gaston
Sr. Associate AD/ Health and Wellness	Shelly Mullenix
Sr. Associate AD/Sr. Woman Administrator	Miriam Segar
Interim Senior Advisor to the AD for Equity, Diversity & Inclusion Director, Student-Athlete Mental Health	Dr. Lakeitha Poole
Chief of Staff	Andrea Tepe

SOCCER STAFF

Head Coach	Sian Hudson (Fourth Season)
Alma Mater	Cardiff Metropolitan (2002)
Career Record(s)	81-30-15
at University of Colorado at Colorado Springs (2017-2019)	52-10-4
at LSU (Present)	29-20-11
Associate Head Coach	Seb Furness (Fourth Season)
Alma Mater	West Texas A&M (2012)
Assistant Coach	Tiffany Hansen (Second Season)
Alma Mater	Bowling Green (2008)
Assistant Coach	Trey Thompson (First Season)
Alma Mater	Kansas Wesleyan (2007)
Director of Operations	Samantha Etherington
Strength & Conditioning	Renee Balconi
Athletic Trainer	Hannah Faldetta

TEAM INFORMATION

2022 Record	10-4-7
2022 SEC Record	4-2-4
Letterwinners Returning/Lost	22/10
Starters Returning/Lost	8/4
Newcomers	6
Inaugural Season	1995
Overall Record	250-232-70

ATHLETIC COMMUNICATIONS

Associate AD/Communications	Michael Bonnette
Sr. Associate Communications Director	Bill Franques
Sr. Associate Communications Director	Kent Lowe
Assistant Communications Director (Soccer Contact)	Alyssa Leal

CREATIVE SERVICES

Executive Director / Creative Services	Jason Feirman
Creative Services Coordinator	Lindsey Thompson
Creative Services Coordinator	Tyler Schiefelbein
Creative Services Coordinator	Stephanie Lyles
Photography Coordinator	Chris Parent
Executive Director of Creative Content	Emily Dixon
Coordinator of Creative and Digital Content	Matt Tornquist
Chief Brand Officer	Cody Worsham

MEDIA CONTACT INFORMATION

Athletic Communications	(225) 578-8226
Alyssa Leal's Mobile	(504) 373-7428
Alyssa Leal's E-Mail	aleal3@lsu.edu
Website	LSUsports.net

SOCCER CONTACT INFORMATION

Director of Operations	Samantha Etherington
------------------------	----------------------

Sam Etherington's Mobile	(318)-730-4934
Sam Etherington's E-Mail	setherington@lsu.edu
Soccer Office	(225) 578-3947

2023 LSU SOCCER SCHEDULE

AUGUST

17	vs. South Florida	Baton Rouge, La.	6 p.m.
20	vs. Southern Miss	Baton Rouge, La.	4 p.m.
24	at Texas	Austin, Texas	7 p.m.
27	vs. Southern	Baton Rouge, La.	6 p.m.
31	at Wisconsin	Madison, Wi.	7 p.m.

SEPTEMBER

3	vs. TAMUC	Baton Rouge, La.	1 p.m.
7	vs. Pepperdine	Baton Rouge, La.	6 p.m.
10	vs. Northwestern State	Baton Rouge, La.	4 p.m.
15	at Ole Miss	Oxford, Miss.	7 p.m.
21	at Georgia	Athens, Ga.	5 p.m.
24	vs. Mississippi State	Baton Rouge, La.	6 p.m.
29	vs. Florida	Baton Rouge, La.	6 p.m.

OCTOBER

5	at South Carolina	Columbia, SC	6 p.m.
8	vs. Tennessee	Baton Rouge, La.	4 p.m.
13	at Alabama	Tuscaloosa, Ala.	7 p.m.
19	vs. Arkansas	Baton Rouge, La.	6 p.m.
22	at Auburn	Auburn, Ala.	4 p.m.
26	vs. Texas A&M	Baton Rouge, La.	7:30 p.m.
29	SEC Tournament	Pensacola, Fla.	TBA

NOVEMBER

10	NCAA Tournament	TBA	TBA
----	-----------------	-----	-----

MEDIA INFORMATION

The 2023 LSU Soccer Record Book was written to provide members of the media with statistics and information needed to adequately cover the LSU Soccer team. For further information on the team and the scheduling of interviews with head coach Sian Hudson, associate head coach Seb Furness, assistant coaches Tiffany Hansen and Trey Thompson or LSU student-athletes, please contact Alyssa Leal in the LSU Athletic Communications Department at (504)-373-7428

MAILING ADDRESS

LSU Athletic Communications
LSU Box 25095
Baton Rouge, LA 70803

OVERNIGHT MAILING ADDRESS

Athletic Administration Building, Fifth Floor
North Stadium Drive
Baton Rouge, LA 70894

CREDENTIALS

Media credentials should be requested prior to each game. Season credentials are also available upon request. Passes will be available for pick up in the press box at the LSU Soccer Stadium. All requests should be made by contacting Alyssa Leal via phone or email.

INTERVIEWS

Postgame interviews, including those with players and coaches from both teams, will be held on the field approximately five minutes following the completion of each match. Alyssa Leal will take interview requests during the second half of each match and coordinate with the requested coach or student-athlete for postgame interviews. Game information, including halftime and final game statistics, will be provided in the press box.

Practices are also open to the media with Sian Hudson and the players available for interviews after each session. Contact Alyssa Leal to make arrangements to cover a practice.

LSU SOCCER ON THE SEC NETWORK

The Southeastern Conference and ESPN have a 20-year agreement through 2034 to create a multi-platform SEC Network which launched in August 2014. The SEC Network and its accompanying digital platform airs SEC content 24/7, including more than 1,000 events annually.



CREDITS

Editor	Alyssa Leal
Design and Layout	Alyssa Leal, Jason Feirman
Cover Design	Perry Spitzer
Photography	Chris Parent, Gus Stark, Beau Brune



2023 SEC Watchlist



Mollee Swift / GK / Grad.



Maya Gordon / D / 5yrSr.



Ida Hermannsdottir / M / So.



Mollie Baker / F / Sr.



Rammie Noel / F / 5yrSr.

2023 SEC Watchlist Cont.

Mollie Baker, Maya Gordon, Ida Hermannsdottir, Rammie Noel and Mollee Swift are five of 72 student-athletes on this year's watchlist.

A defender from Fort Lauderdale, Florida, Gordon has been a key component to the LSU defense over the past four years. She returns experience to the backline as she earned the start in 18 of 19 games played for the Tigers last season and helped shutout five opponents in 2022.

Swift is a three-year starter who also returns experience to the team this year. Last year, the goalkeeper recorded 77 saves (third best in SEC) on a 74% save percentage on the year, was responsible for five clean sheets and averaged 4.05 saves per game, which lead all SEC keepers between the posts.

A native of Reykjavik, Iceland, Hermannsdottir enters her second year with the Tigers after recording seven goals, two assists and 16 shots on goal last year.

The rising sophomore earned multiple honors in her debut season at LSU in 2022, including All-SEC Freshman Team, Top Drawer Soccer All-Freshman Team and LSWA Louisiana Freshman of the Year.

Noel is a forward from Carencro, Louisiana, who is a major contributor on the wing for the Tigers. She started in 16 matches with 19 appearances and tallied one goal and two assists throughout the 2022 season.

In her debut season as a Tiger after transferring from North Carolina in 2022, Baker notched four goals, six assists, 17 shots on goal and one game winning goal in the squad's 3-2 win versus Kentucky last season. The forward continues to be an offensive force for the Tigers as she enters her senior season this year.

The Captains

LSU is captained by the veteran duo of fifth year seniors Maya Gordon and Mollee Swift.

A native of Papillion, Nebraska, Swift recorded 77 saves in between the posts for the Tigers last season, which placed her third in the conference. She also averaged 4.05 saves per game leading all SEC keepers. The goalkeeper was responsible for five clean sheets in the 2022 season and finished the year with a record of 7-4-7 and 1,693 minutes played.

She currently ranks third in LSU program history in saves and shutouts as she will look to break records in 2023.

Gordon is a veteran in the backline who has notched notable minutes in her four years at LSU with a total of 4,775 minutes on the pitch heading into her final season. The Fort Lauderdale, Florida, native earned the start in 18 of 19 matches for the Tigers last year and returns experience to the defensive unit.

Dobles SEC POTW Honors

LSU Soccer forward Taylor Dobles earned SEC Player of the Week honors on Monday, August 28 following her performance against No. 9 Texas.

The award marked the first conference honor for the graduate student in her career.

The Pembroke Pines, Florida native had a huge performance on the road to lead the Tigers to victory over No. 9 Texas on Thursday, August 24. Dobles tallied a brace against the Longhorns to match her career high in a single match and get on the scoresheet for the first time this year.

Dobles put the Tigers on the board first in the 29th minute to give the Tigers the early lead in Austin. Forward Ava Galligan sent a cross from the right side to the back post that found the head of Rammie Noel. Noel's header was centered to Dobles, who pounced with a header from six yards out that powered over the Longhorn defender on the goal line to give LSU the 1-0 lead. The goal was Dobles' first of the season and sixth in her career.

Her scoring continued in the final minute of the first half as Dobles pounced on a defensive error from a Texas defender and broke away into a one-on-one chance. She dribbled into the box and sent a strong shot from 15 yards out that skipped past the goalkeeper and made it 3-0 with her second goal of the night. The goal was Dobles' seventh of her collegiate career and her third brace.

Dobles and the Tigers made history as they defeated Texas for the first time in series history and recorded the program's first Top-10 win on the road. The 2021 season saw the last time LSU defeated a ranked opponent at home and on the road with victories over No. 4 Arkansas in Baton Rouge and No. 21 Arizona State in Tempe.

The victory also ended the Longhorns 11-match winning streak at home.

Noel TDS Team of the Week

A fifth-year senior from Carencro, Louisiana, Noel has been a crucial component for the Tigers this year on both sides of the ball. She was named to the Top Drawer Soccer Team of the Week in week three following the Tigers matches against No. 9 Texas and Southern.

Against the Longhorns, the forward tallied an assist as teammate Taylor Dobles found the finish for the opening goal of the match against No. 9 Texas in the 28th minute.

Noel notched her first goal of the year in the Tigers last match against Southern. Defender Maya Gordon found open midfielder Ava Galligan, who took the ball with open space down the right side. The freshman sent a ground cross ball into the box to Noel, who found the finish as she tapped it into the back of the net to



The Brace Special

Forwards Mollie Baker and Taylor Dobles and midfielder Ida Hermannsdottir have each respectively recorded a brace on the year.

Baker and Hermannsdottir both individually recorded a brace in the Tigers match against Southern Miss to lead LSU to victory with a 4-1 win over the Golden Eagles.

It was the first time two players individually scores two goals in a match since 2021, when Alesia Garcia and Tinaya Alexander tallied multiple goals over Sam Houston.

Dobles found her sixth and seventh career goals against No. 9 Texas to match her career high of two goals in a single match. The graduate student helped lead the Tigers to victory to take down a ranked opponent on the road on August 24.

The graduate student found her second brace of the year against Northwestern State to move her career total to nine goals.

2023 Stat Leaders

Forward Taylor Dobles and midfielder Ida Hermannsdottir lead the squad in goals scored this year with four each.

Dobles tallied her second brace of the year in the Tiger's last match against Northwestern State to record her third and fourth goals of the year. She now owns nine in her career.

Hermannsdottir notched her fourth goal against Pepperdine to move her career total to 11. The midfielder has also tallied two assists, nine shots on goal and 10 points through non-conference play.

Baker is the second highest goal-scorer with three on the year and seven in her career. She has also recorded three assists, 10 shots on goals and nine points.

Freshman forward Ava Galligan leads the team in assists with four. She has also notched one goal, six points and three shots on goal in her first year as a Tiger.

Her first collegiate goal came against Pepperdine, where she found the equalizer to level out the match for the Tigers and earn a point in the draw.

LSU has seen various players across the scoresheets this year, putting them in an elite group of schools who have 10 or more different goal-scorers in the country.

Goalkeeper Mollee Swift has recorded 21 saves on the year with nine starts and 738 minutes played in between the posts. She owns a GAA of 1.22 this year. Veteran returners Baker, Swift, Gordon and Noel are the only four players to start in every match for LSU on the year thus far.

Hudson on Georgia Matchup

"It's been a great week of training and the team has responded well since falling in our SEC opener. We are really excited for a top-25 matchup at Georgia," said LSU head coach Sian Hudson. "They have been very consistent this season and will provide a stern test for us in Athens, but I feel like this team thrives on the road in big games and we will be looking to bounce back with a win this weekend."

"Some key things for us to focus on will be staying organized defensively, not giving our opponent big chances in transition and being more clinical in the attacking third. We have had 20+ shots in our last two games and our lack of patience and execution in key moments has led to wasted chances. We must be better in this area if we are going to capitalize on our large share of possession we typically have on opponents."

Conference Rankings

LSU will look for their first conference win of the year on Thursday night. The squad holds an overall record of 5-2-1 with a 4-1-1 home record and a record of 1-2-0 on the road as they battle for a road win this week.

The Tigers are amongst the top five teams in the conference in goals and shots while taking the lead in the points and assists categories.

LSU has tallied 22 goals, 24 assists, 161 shots and 68 points through nine matches this year.

Baker ranks second with her 38 shots while Hermannsdottir and Dobles placed in the top-10 in goals with four each.

Swift's 21 saves on the year places her sixth in the rankings. Galligan is also ranked one of the top assisters in the conference.

Swift's Big 300

Goalkeeper Mollee Swift recorded her 300th career save in the Tiger's match against Northwestern State. She recorded two saves against the Lady Demons to reach this milestone in her career.

The Papillion, Nebraska native has tallied 21 saves through nine matches and 738 minutes between the posts for the Tigers this year.

She previously recorded 45 saves during her time at the University of Colorado-Colorado Springs. Since transferring to LSU in 2021, she has tallied 259 saves in between the posts.

Swift's 259 career saves in the Purple & Gold places her at third for most in LSU program history. Megan Kinneman holds second place with 284 while Caroline Brockmeier leads the category with 287 career saves at LSU.

2022-23 LSWA All-Louisiana

Head Coach Sian Hudson and midfielder Ida Hermannsdottir earned top honors by the 2022 Louisiana Sports Writers Association (LSWA).

Hudson was tabbed the LSWA Coach of the Year while Hermannsdottir was named the Louisiana Freshman of the Year.

In only her third season leading the Tigers, Hudson coached LSU to the program's eighth NCAA Tournament appearance in 2022, where the squad recorded their first postseason win of Hudson's tenure, defeating Southland Conference champion Lamar in the first round of the NCAA Tournament.

The 2022 season marked the program's 13th ten-win season as Hudson and the Tigers finished with an overall record of 10-4-7. The regular season was highlighted by five shutouts and three draws against top-ranked opponents.

Hermannsdottir was a key member of the LSU squad as she led the team with seven goals in her first year as a Tiger. The Reykjavik, Iceland product was named to the All-Freshman Team by the SEC and Top Drawer Soccer after a dynamic collegiate debut.

On top of being named the top freshman in the state, Hermannsdottir was one of three Tigers on the All-Louisiana First Team. Also representing LSU were a pair of seniors in defender Lindsie Jennings and midfielder Wasila Diwura-Soale.

A Roster Near and Far

The 2023 roster features 28 athletes, seven of which are newcomers to the squad.

Three countries are represented in the squad (United States, Iceland and Sweden). Ida Hermannsdottir is a native of Iceland and Angelina Thoreson is a proud Swede.

Of the remaining 26 athletes, six are native to Colorado, five to Texas, and four to Louisiana and Florida. The remaining states that are represented among this year's squad are Arizona, New York, Virginia, Nebraska, Virginia and Washington.

Next Up

LSU is set to host Mississippi State on Sunday, Sept. 24 at 6 p.m. CT for the squad's SEC home opener inside the LSU Soccer Stadium.

The Tigers hold a 21-3-3 record over the Bulldogs. The last time the two teams met was in 2022, when MSU found the 3-2 victory over LSU in Baton Rouge.





2023 Soccer Staff



Sian Hudson

Head Coach
4th Year

- Hudson enters her fourth season leading the Tigers. She owns a 29-20-11 record in the Purple & Gold
- Hired as LSU head coach on Dec. 11, 2019
- 81-30-15 record as collegiate head coach
- Led the Tigers to the program's eighth NCAA Tournament appearance in 2022 for second time in her LSU career
- Recorded two 10+ winning seasons during her three seasons at LSU
- Led LSU to record of 8-8-3 in debut season; that was an +5 win improvement from the season before her arrival
- Six Tigers have taken their career to the professional level under Hudson, including two NWSL draft selections
- Led University of Colorado at Colorado Springs to a NCAA Division II No. 1 ranking in 2019
- 2019 Rocky Mountain Athletic Conference Coach of the Year
- Took UCCS to the NCAA Division II Tournament in 2017, 2018, and 2019.
- Led the Colorado Pride (W-League) to Western Conference Championship in 2015



Trey Thompson

Assistant Coach
1st Year

- Thompson served as the volunteer coach for the Tigers during the 2022 season before being promoted to assistant coach in 2023
- Spent seven years coaching youth teams at Sereno Soccer Club, Arizona's most prestigious club for youth
- Split time as a head coach in the US Youth Soccer Olympic Development Program, where he and his teams made the Western Region finals four times, winning it in 2018 and 2019
- Named the 2019 Arizona Youth Soccer Competitive Coach of the Year
- Coached youth soccer in the Real Salt Lake-AZ and Utah Royals setup. His Utah Royals team were DPL National Champions in 2021



Seb Furness

Associate Head Coach
4th Year

- Vital staff member as he was promoted to Associate Head Coach in August 2022 after serving as an assistant coach in his first two years in Baton Rouge
- In Furness' time, the Tigers have reached the NCAA Tournament twice (2021, 2022)
- Helped LSU register six shutouts and a GAA of 0.95 in his first season in Baton Rouge
- Spent four seasons as goalkeepers coach at Colorado State (2016-19)
- Led sophomore goalkeeper Gabi McDonald (CSU) to the 10th best save percentage (.879) in the NCAA in 2019. McDonald was first keeper in CSU history to earn Mountain West First Team honors and was named to United Soccer Coaches All-Pacific Team
- Helped Colorado State lower goals allowed total of 36 in 2016 to only 15 in 2019. The Rams lowered goals allowed in each of the four seasons he was on staff
- Played the goalkeeper position at West Texas A&M from 2008-11. In 2009, his save percentage of .889



Renee Balconi

Strength & Conditioning
4th Year

- Trained a number of professional athletes during her tenure at Balconi Top Training, a company she founded in 2009
- Served as a high performance director for a number of universities and high schools over the past decade
- In the process of obtaining her master's degree in Exercise Science from Concordia University
- NCSA Certified Strength and Conditioning Specialist since 2017
- Four-year starter for the University of Cincinnati soccer team from 2000-04
- She trained current U.S. national soccer team member, Rose Lavelle, while also training athletes from the NWSL, MLS, NFL and NBA



Tiffany Hansen

Assistant Coach/Recruiting Coordinator
2nd Year

- This season marks Hansen's 16th season as a Division I assistant coach. She spent seven years at University of Michigan
- Put together the No. 6 recruiting class in all of the country in 2017, which paid dividends in Michigan's success the last five seasons
- Helped Michigan have immense success as the Wolverines advanced to the NCAA Tournament in 2015, 2019, and 2021.
- The Wolverines had a record of 18-4-3 in 2021 and advanced the quarterfinals of the NCAA Tournament.
- Prior to Michigan, Hansen was the goalkeeper coach, lead recruiter, and camp director at the University of Dayton and helped the Flyers appear in two Atlantic 10 Conference tournament championships in 2011 and 2014, and the regular season title in 2013
- Experienced working with US Soccer at the Youth Level as she served as an assistant with both the U17 and U18 WNT, while also working as a scout for US Soccer across the country
- Will work directly with LSU's goalkeepers.



Hannah Faldetta

Athletic Trainer
10th Year

- Served as LSU soccer's athletic trainer since 2014
- Graduate assistant at West Virginia University and earned her master's degree in Athletic Training
- Attended Purdue University for undergrad and graduated in 2012 with a degree in athletic training
- Studied abroad in China during her time at Purdue at the Beijing Sport University



2023 Roster



Bailey Herfurth
5-11 • Fr. • GK
Northport, N.Y.
IMG Academy



Mollee Swift
5-9 • Sr. • GK
Papillion, Neb.
UCCS/La Vista HS



Jocelyn Olivierre
5-7 • Fr. • D
Colorado Springs, Colo.
Air Academy HS



Hali Hartman
5-7 • So. • D
Grand Prairie, Texas
South Grand Prairie HS



Neveah Johnson
5-5 • Jr. • M
Arlington, Texas
Kennedale HS



Danielle Shannon
5-1 • RFr. • M
Houston, Texas
Houston Dash Academy



Maya Gordon
5-6 • Gr. • D
Fort Lauderdale, Fla.
Cypress Bay HS



Ida Hermannsdottir
5-10 • So. • M
Reykjavik, Iceland
Valur Reykjavik



Angelina Thoreson
5-5 • So. • F
Uppsala, Sweden
IK Uppsala



Laney Gonzales
5-5 • So. • F
Magnolia, Texas
Magnolia HS



Taylor Dobles
5-10 • Gr. • F
Pembroke Pines, Fla.
American Heritage School



Jordan Johnson
5-6 • Sr. • M
Denver, Colo.
Prairie View HS



Caley Swierenga
5-9 • Fr. • D
Denver, Colo.
Lutheran HS



Kelsey Major
5-5 • So. • M
New Orleans, La.
St. Mary's Dominican



Andrea Ijckic
5-7 • Fr. • F
Littleton, Colo.
Columbine HS



Ava Galligan
6-0 • Fr. • F/M
Ashburn, Va.
Independence HS



Tori Gillis
5-7 • Jr. • M
Leesburg, Va.
Loudoun County HS



Raelyn Prince
5-5 • So. • M
Titusville, Fla.
Titusville HS



Bella Zanotelli
5-11 • Sr. • GK
Pueblo West, Colo.
Cheyenne Mountain HSS



Abby Smith
5-5 • Sr. • M
Flower Mound, Texas
Flower Mound HS



Britney Bertram
5-7 • 5YSr. • F
Slidell, La.
Stetson/Northshore HS



Brielyn Knowles
5-8 • Fr. • M
Orlando, Fla.
Windemere Prep



Jaden Humbyrd
5-5 • Jr. • M
Issaquah, Wash.
Issaquah HS



Alyson Campbell
5-6 • Fr. • GK
Boulder, Colo.
Fairview HS



Rammie Noel
5-0 • 5YSr. • F
Carencro, La.
Acadiana HS



Sarah Portis
5-6 • RSo. • D
Anaheim, Calif.
Dana Hills HS



Sage Glover
5-2 • So. • F
New Orleans, La.
North Atlanta HS



Mollie Baker
5-7 • Sr. • F
Gilbert, Ariz.
Williams Field HS



2023 Roster

Full Name	Position	23Height	23Class	23Exp.	Hometown	High School	Previous School(s)
Bailey Herfurth	Goalkeeper	6-0	Redshirt Freshman	1L	Northport, N.Y.	IMG Academy	
Mollee Swift	Goalkeeper	5-7	Graduate Student	3L	Papillion, Neb.	Papillion-La Vista HS	Colorado at Colorado Springs
Jocelyn Ollivierre	Defender	5-7	Sophomore	1L	Colorado Springs, Colo.	Air Academy HS	
Hali Hartman	Defender	5-7	Sophomore	TR	Grand Prairie, Texas	South Grand Prairie HS	Oklahoma
Nevaeh Johnson	Midfielder	5-5	Junior	3L	Arlington, Texas	Kennedale HS	
Danielle Shannon	Midfielder	5-1	Redshirt Freshman	1L	Houston, Texas	Houston Dash Academy	
Maya Gordon	Defender	5-6	Graduate Student	4L	Fort Lauderdale, Fla.	Cypress Bay HS	
Ida Hermannsdottir	Midfielder	5-10	Sophomore	1L	Reykjavik, Iceland	Valur Reykjavik	
Angelina Thoreson	Forward	5-5	Sophomore	1L	Uppsala, Sweden	Celsiuskolan	
Laney Gonzales	Defender	5-5	Sophomore	1L	Magnolia, Texas	Magnolia HS	
Taylor Dobles	Forward	5-9	Graduate Student	3L	Pembroke Pines, Fla.	American Heritage School	
Jordan Johnson	Midfielder	5-6	Senior	3L	Denver, Colo.	Prairie View HS	
Caley Swierenga	Defender	5-9	Freshman	HS	Denver, Colo.	Lutheran HS	
Kelsey Major	Midfielder	5-5	Sophomore	1L	New Orleans, La.	St. Mary's Dominican HS	
Andrea Iljkic	Forward	5-7	Freshman	HS	Littleton, Colo.	Columbine HS	
Ava Galligan	Forward/Midfielder	6-0	Freshman	HS	Ashburn, Va.	Independence HS	
Tori Gillis	Midfielder	5-7	Junior	2L	Leesburg, Va.	Loudoun County HS	
Raelyn Prince	Midfielder	5-5	Sophomore	1L	Titusville, Fla.	Titusville HS	
Bella Zanotelli	Goalkeeper	5-11	Senior	3L	Pueblo West, Colo.	Cheyenne Mountain HS	
Abby Smith	Midfielder	5-7	Senior	3L	Flower Mound, Texas	Flower Mound HS	
Britney Bertram	Forward	5-6	5th-Year Senior	2L	Slidell, La.	Northshore HS	Stetson
Brielyn Knowles	Midfielder	5-8	Freshman	HS	Orlando, Fla.	Windermere Preparatory School	
Jaden Humbyrd	Midfielder	5-6	Junior	2L	Issaquah, Wash.	Issaquah HS	
Alyson Campbell	Goalkeeper	5-6	Freshman	HS	Boulder, Colo.	Fairview HS	
Rammie Noel	Forward	5-0	5th-Year Senior	4L	Carencro, La.	Acadiana HS	
Sarah Portis	Defender	5-6	Redshirt Sophomore	HS	Anaheim, Calif.	Dana Hills HS	
Sage Glover	Forward	5-2	Sophomore	1L	New Orleans, LA	North Atlanta HS	
Mollie Baker	Forward	5-7	Senior	1L	Gilbert, Ariz.	Williams Field HS	North Carolina

2023 Pronunciation Guide

0 – Bay-lee	Her-Furth
2 – Jaw-suh-lyn	Ole-lee-vair-ay
3 – Hay-lee	Heart-man
7 – Nuh-vay-uh	Johnson
9 – My-uh	Gor-done
10 – Ee-duh	Her-mans-daw-ter
11 – An-jel-ee-nah	Thaw-sun
12 – Lane-ee	Gun-zawl-less
13 – Taylor	Doh-blez
17 – KAY-lee	SWAIR-ing-uh
19 – Un-DREY-uh	ILL-keesh
24 – Bell-uh	Zan-oh-tell-ee
26 – BREE-lin	Noles
29 – Jay-den	Hum-bird
38 – Ray-me	No-el

Sian Hudson

HEAD COACH • 4th Season



Sian (pronounced SHAWN) Hudson was named LSU's head coach on December 11, 2019. Since that date, she's helped take LSU to places its never been before. A No. 5 national ranking in the fall of 2021, the highest in program history, and she's already amassed five wins over nationally ranked teams. In only her third season as head coach of the Fighting Tigers, Hudson led her squad to the program's eighth NCAA Tournament appearance in 2022 and marked the second postseason appearance in her LSU career. The Tigers first round win over Lamar on November 11 marked Hudson's first victory in the NCAA Tournament. Last year, Hudson recorded the program's 13th ten-win season with an overall record of 10-4-7 in 2022. The Tigers shutout five opponents and recorded a draw against three ranked opponents.

Hudson and the LSU Soccer program invest in developing their players. In her time as head coach, Hudson has had six players take their talents to the next level. Shannon Cooke, Lindsie Jennings, Alesia Garcia, Brenna McPartlan, Tinaya Alexander and Athene Kuehn were coached and developed by Hudson and are now playing professionally across the world.

In three short years, Hudson and the Tigers have shattered LSU Soccer Stadium attendance records. Two of the program's top ten all-time largest crowds were under Hudson as LSU continues to be one of the top program's nationally with fan attendance, earning Top 15 status in 2021. The 2021 fall season started off about as good as it could have with the Tigers winning eight straight under the direction of Hudson. Included in those eight straight wins were triumphs over three ranked squads – No. 15 USF, No. 19 UCF, and No. 21 Arizona State. Pair those eight wins with the final three from the spring season of 2021 and LSU had won a program record 11 straight games.

LSU tallied a total of four ranked wins during the 2021 season. The aforementioned three above in an 11-day span from late August to early September, and then the biggest one of them all came in the regular season finale against No. 4 Arkansas. With LSU's season on the line, the Tigers came out with a fiery passion under Hudson on Oct. 28, 2021, as the Tigers handed the Razorbacks their first and only loss of the conference regular season with a 4-2 victory. The win solidified LSU's positioning in the SEC and NCAA Tournament and was the highest ranked win in program history.

LSU scored 40 goals on the season while only conceding 25 times in 2021; that goal differential of 15 was the highest for the program since 2009. The 40 goals were the most in program history since 2009 as well. Fourteen different players factored into the scoresheet with goals to match the program record for most individual goals scorers in a single season.

Only three months into her gig at the helm of LSU soccer in March of 2020, the COVID-19 pandemic struck and halted all of collegiate athletics, but Hudson didn't let that deter her. Fast forward five months and the LSU soccer team returned to campus and began practice for the 2020-21 season, its first under Hudson. Hudson's first win of her LSU career came on November 13, 2020, as the Tigers shutout Alabama for a 2-0 win over Alabama in the first round of the SEC Tournament in Orange Beach, Alabama. The Tigers followed that up with a 2-1 win over No. 14 Ole Miss two days later to advance to the SEC quarterfinals in their first SEC Tournament appearance under Hudson's reign.

The 2020-21 season featured fall and spring games counted towards LSU's team record and Hudson made the most of the spring with her team. She led her squad to a record of 6-1-1 in the spring of 2021 and the level of expectation within the program has risen heading into the fall of 2021. The Tigers ended the 2020-21 season with an RPI of 54.

Hudson came to LSU with nearly 20 years of coaching experience. She came to Baton Rouge after serving as the head coach at the University of Colorado at Colorado Springs for the past three seasons. During her time as head coach at UCCS, Hudson led the Mountain Lions to a 52-10-4 record. Each of those three seasons saw UCCS qualify for the NCAA Tournament, the first three appearances in school history, including a run to the national semifinals in 2017. Her win totals in each of the three seasons – 17 in 2017, 16 in 2018, and 19 in 2019 – were the three winningest seasons in program history.

Hudson earned her bachelor's in Sports Coaching Science, majoring in sport psychology from Cardiff Metropolitan University in 2002. She's graduated with her master's degree in sports coaching from the University of Denver in May of 2020.



SIAN HUDSON

HOMETOWN	Newport, Wales
EDUCATION	Cardiff Metropolitan University (2002), University of Denver (2020)
HUSBAND	Rance
CHILDREN	Olivia, Reid

COACHING CAREER

Season	School/Team	Position
2019-Pres.	LSU	Head Coach
2017-19	UCCS	Head Coach
2015-17	Colorado College	Assistant Coach
2014-15	Colorado Pride	General Manager*
2015	Colorado Pride	Head Coach*
2014	Colorado Pride	Assistant Coach*
2002-15	Pride Soccer Club	Director

*Colorado Pride was in the W-League

CAREER RECORD

Season	School/Team	Record
2023	LSU	5-3-1
2022	LSU	10-4-7
2021	LSU	11-8-1
2020-21	LSU	8-8-3
2019	UCCS	19-2-0
2018	UCCS	16-3-3
2017	UCCS	17-5-1
2015	Colorado Pride	11-3-1
Total		97-36-17

SIAN HUDSON 2019-PRESENT



YEAR	OVERALL	SEC
2020-21	8-8-3	0-6-2 (7th SEC West)
2021	11-8-1	4-6 (5th SEC West)
2022	10-4-7	4-2-4 (5th SEC West)
2023	5-3-1	0-1 (CURRENT)
Totals	32-22-11	8-15-6

LSU's Record When Under Sian Hudson

Home.....	17-8-4
Away	12-12-6
Neutral.....	5-3-2

vs. Ranked Opp.	6-7-3
Leading at Half.....	26-2-2
Trailing at Half.....	2-12-4
Tied	4-7-6

Taking More Shots	21-5-3
Taking Fewer Shots.....	9-16-8
Equal Shots	3-1-0
More Corners.....	20-6-2
Less Corners.....	12-12-6
Equal Corners	0-3-4

Scoring First.....	27-2-3
Opp. Scores First	6-19-3

When Scoring Two or More Goals	27-2-4
When Scoring None	0-12-6
When Scoring One Goal.....	4-6-2
When Scoring Two Goals.....	13-2-3
When Scoring Three Goals	6-0-1
When Scoring Four Goals	4-0-0
When Scoring Five Goals	4-0-0
When Scoring Six Goals	1-0-0
When Scoring Eight Goals	1-0-0

LSU's Record Under Sian Hudson vs. SEC Opponents

Home.....	6-6-2
Away	2-9-5
Neutral.....	3-2-2

vs. Ranked Opp.	2-4-2
Leading at Half.....	7-0-1
Trailing at Half.....	1-10-2
Tied	3-6-6

Taking More Shots	4-3-1
Taking Fewer Shots.....	6-14-8
Equal Shots	1-1-0
More Corners.....	3-4-2
Less Corners.....	8-11-5
Equal Corners	0-2-2

Scoring First.....	8-0-1
Opp. Scores First	3-17-2

When Scoring Two or More Goals.....	10-1-2
When Scoring None	0-11-6
When Scoring One Goal.....	1-5-1
When Scoring Two Goals.....	6-1-1
When Scoring Three Goals	1-0-1
When Scoring Four Goals	3-0-0
When Scoring Five+ Goals.....	N/A

TOP 10 ATTENDANCES

- 1 **3,021**
Sept. 17, 2021 vs. Mississippi St
(LSU won 2-0)
- 2 **2,624**
Aug. 24, 2012 vs. Rice (Tied 1-1)
- 3 **2,542**
Sept. 9, 2011 vs. Oregon
(LSU won 1-0)
- 4 **2,402**
Oct. 5, 2007 vs. #6 Tennessee
(LSU won 3-0)
- 5 **2,160**
Sept. 14, 2007 vs. McNeese State
(LSU won 5-0)
- 6 **2,004**
Sept. 22, 2022 vs. Missouri
(W, 2-1)
- 7 **1,982**
Oct. 1, 2010 vs. Alabama
(Tied 0-0)
- 8 **1,910**
Sept. 14, 2012 vs. #10 Texas A&M
(Texas A&M won 1-0)
- 9 **1,828**
Aug. 31, 2007 vs. Southern Miss
(LSU won 3-0)
- 10 **1,689**
Sept. 30, 2005 vs. Ole Miss
(Ole Miss won 1-0)

The LSU Soccer Stadium saw the 2007 and 2015 seasons standing out the most with unbeaten records on the home pitch. 2007 saw the Tigers go 5-0-3 and 2015's unbeaten record at home was 8-0-4.

The impressive run with an unbeaten 5-0-3 home slate in 2007 was followed by an impressive 8-1 campaign in 2008, a 7-1-2 season in 2009, a 6-2-1 mark in 2010 and a stellar 7-1-1 season in 2011. While winning four SEC Western Division championships and making four trips to the NCAA Tournament from 2007-11, the Tigers posted a 33-5-7 record with a .811 winning percentage. They most recently finished the 2015 season unbeaten at home with an 8-0-4 mark in 12 matches played in Baton Rouge.

In fact, LSU's home performance is highlighted by a school record 18-game home unbeaten streak that came to an end on Oct. 26, 2008, with a 2-1 defeat to the No. 6-ranked Florida Gators.

2022 marked the 27th season in the life of the LSU Soccer Stadium, which was first opened on Sept. 13, 1996, when the Tigers hosted SEC rival Tennessee.

The 2021 season saw multiple record breaking moments for the Tigers. LSU had the longest winning streak in the program with eight straight victories. The soccer stadium also saw a record breaking attendance in the 2021 season. In the Tigers match against Mississippi State on September 17, a crowd of 3,021 people showed out to watch the Tigers defeat the Bulldogs 2-0 at home. The attendance marked the highest in program history. LSU averaged 1,334 fans per home match during the 2021 season to set the program record, and that average ranked as the 12th highest in the nation.

In 2022, Hudson continued to shatter LSU Soccer Stadium attendance records as she drew in the sixth largest crowd in program history against Missouri with 2,004 fans on September 22.

YEAR-BY-YEAR RESULTS LSU SOCCER STADIUM

	W	L	T
1995 *	9	2	1
1996	4	4	0
1997	0	9	0
1998	5	5	1
1999	4	6	0
2000	7	3	0
2001	5	2	1
2002	6	2	2
2003	7	2	0
2004	6	5	0
2005	5	3	0
2006	6	2	2
2007	5	0	3
2008	8	1	0
2009	7	1	2
2010	6	2	1
2011	7	1	1
2012	5	5	3
2013	4	3	2
2014	3	6	2
2015	8	0	4
2016	2	6	1
2017	6	4	1
2018	7	1	2
2019	2	5	1
2020-21	2	4	1
2021	5	2	0
2022	6	1	2
Totals	147	87	33

*The 1995 inaugural season was played on the University High field adjacent to the football practice facility

Tigers In The Pro's

The LSU Tigers have eight former players playing professionally across the globe, six of which played under current-head coach Sian Hudson during her time at LSU. Four players play in England's top two tiers, two play for the Houston Dash together in the United States, one plays in Hungary while the final player plays in Switzerland.

The English Four

Four Englishwomen returned to their home countries following their time in the United States and currently represent clubs at the highest level. Two players currently play in the Barclay's Women's Super League, England's highest tier. Shannon Cooke is entering her second season at West Ham United after joining in January while former LSU & West Ham teammate Lucy Parker recently completed a move to Aston Villa in July.



SHANNON COOKE - DEFENDER

West Ham United Women
Time at LSU: 2018-2022



LUCY PARKER - DEFENDER

Aston Villa Women
Time at LSU: 2017-2018
Previous Clubs: West Ham (2021-2023)

The remaining two players play in the FA Women's Championship, the tier just below the WSL. Tinaya Alexander recently completed a move to the London City Lionesses on August 4th while Brenna McPartlan enters her second season with Sunderland after joining the club in the spring.



TINAYA ALEXANDER - FORWARD

London City Lionesses
Time at LSU: 2017-2021
Previous Clubs: Reading FC (2023), Montpellier (2022-23),
Washington Spirit (2022)



BRENNA MCPARTLAN - MIDFIELDER

Burnley Football Club
Time at LSU: 2021-2022



The Houston Connection

Two players currently play in the North American Soccer League, the top tier of soccer in the United States. LSU legend Allysha Chapman is in her 14th season as a professional and her 7th total as a member of the Houston Dash while Lindsy Jennings is in her first professional season after being selected by the Houston Dash in the third round of the NWSL Draft by the club in January. With the pick, Jennings became only the second player in program history to be selected in the NWSL Draft.



LINDSI JENNINGS - DEFENDER

Houston Dash
Time at LSU: 2021-2022



ALLYSHA CHAPMAN - DEFENDER

Houston Dash
Time at LSU: 2009-2011
Previous Clubs: North Carolina Courage (2018), Boston Breakers (2017), Houston Dash (2015-16), Eskilstuna United DFF (2014), IK Sirius FK (2012-13)
International: Canadian National Team

Tigers Take on Europe

Alesia Garcia had a memorable first season as a professional as she helped her club, FTC Női Labdarúgás, claim the league title in Hungary's top women's league after signing with the club in March. Athena Kuehn finished her spring in Spain with SC Huelva before signing with BSC Young Boys Frauen in Switzerland in August.



ATHENA KUEHN - MIDFIELDER

Sporting Club de Huelva
Time at LSU: 2021
Previous Clubs: SC Huelva (2022-23), FC Gintra (2022)



ALESIA GARCIA - FORWARD

FTC NŐI LABDARÚGÁS
Time at LSU: 2021-2022



2023-24 LSU Women's Soccer
Overall Team Statistics
All games

Page 1/1
as of Sep 19, 2023

Game Records

Overall	Conference	Home	Away	Neutral
5 - 3 - 1	0 - 1 - 0	4 - 1 - 1	1 - 2 - 0	0 - 0 - 0

Team statistics

	LSU	OPP
SHOT STATISTICS		
Goals-Shot attempts	22-161	10-66
Goals scored per game	2.44	1.11
Shot pct.	.137	.152
Shots on goal-Attempts	75-161	33-66
SOG pct.	.466	.500
Shots/Game	17.9	7.3
Assists	24	7
GOAL BREAKDOWN		
Total Goals	22	10
Penalty	1	2
Unassisted	-	-
Overtime	0	0
Goals scored average	2.44	1.11
CORNER KICKS	52	27
PENALTY KICKS	1-1	2-2
OFFSIDES	22	16
PENALTIES		
Fouls	80	76
Yellow cards	7	4
Red cards	0	0
ATTENDANCE		
Total	3361	3769
Dates/Avg Per Date	6/560	3/1256
Neutral Site #/Avg	0/0	-

Goals by Periods

Team	1st	2nd	OT1	OT2	TOTAL
LSU	11	11	0	0	22
Opponents	5	5	0	0	10

Corners by Periods

Team	1st	2nd	OT1	OT2	TOTAL
LSU	20	32	0	0	52
Opponents	14	13	0	0	27

Shots by Periods

Team	1st	2nd	OT1	OT2	TOTAL
LSU	76	85	0	0	161
Opponents	37	29	0	0	66

Fouls by Periods

Team	1st	2nd	OT1	OT2	TOTAL
LSU	36	44	0	0	80
Opponents	39	37	0	0	76

Saves by Periods

Team	1st	2nd	OT1	OT2	TOTAL
LSU	17	6	0	0	23
Opponents	25	28	0	0	53

Offsides by Periods

Team	1st	2nd	OT1	OT2	TOTAL
LSU	19	3	0	0	22
Opponents	7	9	0	0	16



2023-24 LSU Women's Soccer
Extended Individual Statistics
All games

Page 1/2
as of Sep 19, 2023

Game Records

Overall	Conference	Home	Away	Neutral
5 - 3 - 1	0 - 1 - 0	4 - 1 - 1	1 - 2 - 0	0 - 0 - 0

Team Box Score Extended

No.	Player	GP-GS	G	GPG	A	APG	PTS	PPG	SH	SPG	SH%	SOG	SOG/G	SOG%	YC	RC	GWG	PK-ATT
10	Hermansdottir, Ida	9-7	4	0.44	2	0.22	10	1.11	20	2.22	.200	10	1.11	.500	1	0	1	1-1
71	Baker, Mollie	9-9	3	0.33	3	0.33	9	1.00	38	4.22	.079	16	1.78	.421	0	0	1	0-0
13	Dobles, Taylor	9-6	4	0.44	0	0.00	8	0.89	15	1.67	.267	11	1.22	.733	0	0	1	0-0
38	Noel, Rammie	9-9	2	0.22	2	0.22	6	0.67	7	0.78	.286	3	0.33	.429	0	0	1	0-0
20	Galligan, Ava	9-7	1	0.11	4	0.44	6	0.67	15	1.67	.067	4	0.44	.267	0	0	0	0-0
18	Major, Kelsey	9-0	2	0.22	1	0.11	5	0.56	8	0.89	.250	3	0.33	.375	0	0	0	0-0
27	Bertram, Britney	9-3	2	0.22	0	0.00	4	0.44	8	0.89	.250	6	0.67	.750	0	0	0	0-0
50	Glover, Sage	8-1	2	0.25	0	0.00	4	0.50	4	0.50	.500	4	0.50	1.000	1	0	1	0-0
23	Prince, Raelyn	8-1	1	0.13	2	0.25	4	0.50	13	1.63	.077	4	0.50	.308	1	0	0	0-0
15	Johnson, Jordan	9-6	1	0.11	2	0.22	4	0.44	10	1.11	.100	3	0.33	.300	0	0	0	0-0
8	Shannon, Danielle	9-7	0	0.00	2	0.22	2	0.22	5	0.56	.000	0	0.00	.000	2	0	0	0-0
17	Swierenga, Caley	6-1	0	0.00	2	0.33	2	0.33	3	0.50	.000	2	0.33	.667	0	0	0	0-0
12	Gonzales, Laney	7-0	0	0.00	1	0.14	1	0.14	2	0.29	.000	2	0.29	1.000	0	0	0	0-0
9	Gordon, Maya	9-9	0	0.00	1	0.11	1	0.11	2	0.22	.000	1	0.11	.500	0	0	0	0-0
21	Gillis, Tori	8-4	0	0.00	1	0.13	1	0.13	1	0.13	.000	1	0.13	1.000	0	0	0	0-0
2	Ollivierre, Jocelyn	9-7	0	0.00	1	0.11	1	0.11	0	0.00	.000	0	0.00	.000	0	0	0	0-0
7	Johnson, Nevaeh	9-5	0	0.00	0	0.00	0	0.00	4	0.44	.000	2	0.22	.500	1	0	0	0-0
29	Humbyrd, Jaden	6-2	0	0.00	0	0.00	0	0.00	4	0.67	.000	2	0.33	.500	1	0	0	0-0
25	Smith, Abby	3-0	0	0.00	0	0.00	0	0.00	1	0.33	.000	0	0.00	.000	0	0	0	0-0
1	Swift, Mollee	9-9	0	0.00	0	0.00	0	0.00	1	0.11	.000	1	0.11	1.000	0	0	0	0-0
24	Zanotelli, Bella	3-0	0	0.00	0	0.00	0	0.00	0	0.00	.000	0	0.00	.000	0	0	0	0-0
28	Knowles, Brielyn	3-0	0	0.00	0	0.00	0	0.00	0	0.00	.000	0	0.00	.000	0	0	0	0-0
3	Hartman, Hali	8-6	0	0.00	0	0.00	0	0.00	0	0.00	.000	0	0.00	.000	0	0	0	0-0
39	Portis, Sarah	2-0	0	0.00	0	0.00	0	0.00	0	0.00	.000	0	0.00	.000	0	0	0	0-0
Total		9	22	2.44	24	2.67	68	7.56	161	17.89	.137	75	8.33	.466	7	0	-	1-1
Opponents		9	10	1.11	7	0.78	27	3.00	66	7.33	.152	33	3.67	.500	4	0	-	2-2

##	Player	GP-GS	MINUTES	GA	GA AVG	SAVES	SAVES/G	SAVES%	W	L	T	SHO/CBO
1	Swift, Mollee	9-9	738:27	10	1.22	21	2.33	.677	5	3	1	0/2
24	Zanotelli, Bella	3-0	71:33	0	0.00	0	0.00	.000	0	0	0	0/2
TM	TEAM	-	00:00	0	0.00	2	0.22	1.000	0	0	0	2/0
Total		9	810:00	10	1.11	23	2.56	.697	5	3	1	2
Opponents		9	810:00	22	2.44	53	5.89	.707	3	5	1	3

Goals by Periods

Team	1st	2nd	OT1	OT2	TOTAL
LSU	11	11	0	0	22
Opponents	5	5	0	0	10

Corners by Periods

Team	1st	2nd	OT1	OT2	TOTAL
LSU	20	32	0	0	52
Opponents	14	13	0	0	27

Shots by Periods

Team	1st	2nd	OT1	OT2	TOTAL
LSU	76	85	0	0	161
Opponents	37	29	0	0	66

Fouls by Periods

Team	1st	2nd	OT1	OT2	TOTAL
LSU	36	44	0	0	80
Opponents	39	37	0	0	76



**2023-24 LSU Women's Soccer
Extended Individual Statistics
All games**

Page 2/2
as of Sep 19, 2023

Saves by Periods

Team	1st	2nd	OT1	OT2	TOTAL
LSU	17	6	0	0	23
Opponents	25	28	0	0	53

Attendance Summary

	LSU	Opponents
Total	3361	3769
Dates/Avg Per Date	6 / 560	3 / 1256
Neutral Site #/Avg	0 / 0	

Team Results

	Date	Opponent		Score	Overall	Conf	Att.	Goals Scored
	08/17/2023	South Fla.	L	0-1	0-1-0	0-0-0	1258	-
	08/20/2023	Southern Miss.	W	4-1	1-1-0	0-0-0	344	Baker, Mollie Baker, Mollie Hermannsdottir, Ida Hermannsdottir, Ida
	08/24/2023	at Texas	W	3-1	2-1-0	0-0-0	1795	Dobles, Taylor Dobles, Taylor Hermannsdottir, Ida
	08/27/2023	Southern U.	W	5-0	3-1-0	0-0-0	672	Bertram, Britney Baker, Mollie Noel, Rammie Johnson, Jordan Glover, Sage
	08/31/2023	at Wisconsin	L	0-3	3-2-0	0-0-0	743	-
	09/03/2023	Tex. A&M-Commerce	W	6-0	4-2-0	0-0-0	579	Glover, Sage Noel, Rammie Prince, Raelyn Major, Kelsey Major, Kelsey Bertram, Britney
	09/07/2023	Pepperdine	T	2-2	4-2-1	0-0-0	0	Hermannsdottir, Ida Galligan, Ava
	09/10/2023	Northwestern St.	W	2-1	5-2-1	0-0-0	508	Dobles, Taylor Dobles, Taylor
*	09/15/2023	at Ole Miss	L	0-1	5-3-1	0-1-0	1231	-

Team Record	W-L-T
Overall:	5-3-1
Conference:	0-1-0
Home:	4-1-1
Away:	1-2-0
Neutral:	0-0-0
Overtime:	0-0-0

Attendance	Dates	Total	Avg.
Total:	9	7130	792
Home:	6	3361	560
Away:	3	3769	1256
Neutral:	0	0	0

2023 Career Individual Stats



0 Bailey Hurfurth

Goalkeeper
Redshirt Freshman
Northport, N.Y.
IMG Academy



1 Mollee Swift

Goalkeeper
Graduate Student
Papillion, Nebraska
University of Colorado at Colorado Springs/Papillion-La Vista HS

SWIFT, Mollee

SEASON	TEAM	GP-GS	Min.	G	A	Pts	Shot	Shot%	SOG	SOG%	GW	PK-Att
2019-20	UCCS	19 - 18	1539:11	0	1	1	0	.000	0	.000	0	0 - 0
2020-21	LSU	17 - 17	1512:52	0	0	0	0	.000	0	.000	0	0 - 0
2021-22	LSU	20 - 20	1722:46	1	0	2	1	1.000	1	1.000	1	1 - 1
2022-23	LSU	19 - 19	1693:13	1	0	2	1	1.000	1	1.000	1	1 - 1
2023-24	LSU	9 - 9	738:27	0	0	0	1	.000	1	1.000	0	0 - 0
TOTAL FOR LSU		65 - 65	5667:18	2	0	4	3	.667	3	1.000	2	2 - 2
TOTAL		84 - 83	7206:29	2	1	5	3	.667	3	1.000	2	2 - 2

SEASON	TEAM	GP-GS	Minutes	GA	GAAvg	Saves	Save%	W	L	T	SHO/CBO
2019-20	UCCS	19 - 18	1539:11	10	0.59	45	.818	16	2	0	6/3
2020-21	LSU	17 - 17	1512:52	16	0.96	80	.833	7	6	3	4/1
2021-22	LSU	20 - 20	1722:46	24	1.26	81	.771	11	8	1	6/2
2022-23	LSU	19 - 19	1693:13	27	1.44	77	.740	7	4	7	5/1
2023-24	LSU	9 - 9	738:27	10	1.22	21	.677	5	3	1	0/2
TOTAL FOR LSU		65 - 65	5667:18	77	1.23	259	.771	30	21	12	15/6
TOTAL		84 - 83	7206:29	87	1.09	304	.777	46	23	12	21/9

Single Game Highs

Statistic	Value	
Points	2	at Kentucky 10/14/21, vs Lamar University 11/11/22
Goals	1	at Kentucky 10/14/21, vs Lamar University 11/11/22
Assists	1	vs Regis (CO) 11/03/19
Shots	1	at Kentucky 10/14/21, vs Lamar University 11/11/22, at Ole Miss 09/15/23
Saves	10	vs Alabama 11/13/20



2 Jocelyn Ollivierre

Defender

Sophomore

Colorado Springs, Colo.

Air Academy HS

OLLIVIERRE, Jocelyn

SEASON	TEAM	GP-GS	Min.	G	A	Pts	Shot	Shot%	SOG	SOG%	GW	PK-Att
2022-23	LSU	20 - 6	939:19	0	0	0	2	.000	1	.500	0	0 - 0
2023-24	LSU	9 - 7	547:13	0	1	1	0	.000	0	.000	0	0 - 0
TOTAL		29 - 13	1486:32	0	1	1	2	.000	1	.500	0	0 - 0

Single Game Highs

Statistic	Value	
Points	1	vs Northwestern St. 09/10/23
Assists	1	vs Northwestern St. 09/10/23
Shots	1	vs Grambling 09/02/22, at Texas A&M 10/06/22



3 Hali Hartman

Defender

Sophomore

Grand Prairie, Texas

Oklahoma/South Grand Prairie HS

HARTMAN, Hali

SEASON	TEAM	GP-GS	Min.	G	A	Pts	Shot	Shot%	SOG	SOG%	GW	PK-Att
2023-24	LSU	8 - 6	468:19	0	0	0	0	.000	0	.000	0	0 - 0
TOTAL		8 - 6	468:19	0	0	0	0	.000	0	.000	0	0 - 0



7 Nevaeh Johnson

Midfielder

Junior

Arlington, Texas

Kennedale HS

JOHNSON, Nevaeh

SEASON	TEAM	GP-GS	Min.	G	A	Pts	Shot	Shot%	SOG	SOG%	GW	PK-Att
2021-22	LSU	5 - 0	96:25	0	1	1	1	.000	1	1.000	0	0 - 0
2022-23	LSU	2 - 0	12:58	0	0	0	0	.000	0	.000	0	0 - 0
2023-24	LSU	9 - 5	420:45	0	0	0	4	.000	2	.500	0	0 - 0
TOTAL		16 - 5	530:08	0	1	1	5	.000	3	.600	0	0 - 0

Single Game Highs

Statistic	Value	
Points	1	vs Sam Houston 08/22/21
Assists	1	vs Sam Houston 08/22/21
Shots	1	5 times



8 Danielle Shannon

Midfielder
Redshirt Freshman
Houston, Texas
Houston Dash Academy

SHANNON, Danielle

SEASON	TEAM	GP-GS	Min.	G	A	Pts	Shot	Shot%	SOG	SOG%	GW	PK-Att
2022-23	LSU	5 - 2	199:20	0	0	0	1	.000	0	.000	0	0 - 0
2023-24	LSU	9 - 7	520:19	0	2	2	5	.000	0	.000	0	0 - 0
TOTAL		14 - 9	719:39	0	2	2	6	.000	0	.000	0	0 - 0

Single Game Highs

Statistic	Value	
Points	1	vs Southern Miss. 08/20/23, vs Northwestern St. 09/10/23
Assists	1	vs Southern Miss. 08/20/23, vs Northwestern St. 09/10/23
Shots	2	at Ole Miss 09/15/23



9 Maya Gordon

Defender
Graduate Student
Fort Lauderdale, Fla.
Cypress Bay HS

GORDON, Maya

SEASON	TEAM	GP-GS	Min.	G	A	Pts	Shot	Shot%	SOG	SOG%	GW	PK-Att
2019-20	LSU	10 - 8	671:15	0	0	0	1	.000	0	.000	0	0 - 0
2020-21	LSU	17 - 14	1439:49	0	0	0	3	.000	2	.667	0	0 - 0
2021-22	LSU	20 - 19	1342:27	0	1	1	2	.000	1	.500	0	0 - 0
2022-23	LSU	19 - 18	1321:31	0	1	1	4	.000	0	.000	0	0 - 0
2023-24	LSU	9 - 9	631:06	0	1	1	2	.000	1	.500	0	0 - 0
TOTAL		75 - 68	5406:08	0	3	3	12	.000	4	.333	0	0 - 0

Single Game Highs

Statistic	Value	
Points	1	vs Sam Houston 08/22/21, at Southern Miss. 09/04/22, vs Southern U. 08/27/23
Assists	1	vs Sam Houston 08/22/21, at Southern Miss. 09/04/22, vs Southern U. 08/27/23
Shots	2	vs Ole Miss 10/30/22



10 Ida Hermannsdottir

Midfielder
Sophomore
Reykjavik, Iceland
Valur Reykjavik

HERMANNSDOTTIR, Ida

SEASON	TEAM	GP-GS	Min.	G	A	Pts	Shot	Shot%	SOG	SOG%	GW	PK-Att
2022-23	LSU	19 - 16	1254:38	7	2	16	23	.304	16	.696	2	1 - 1
2023-24	LSU	9 - 7	504:42	4	2	10	20	.200	10	.500	1	1 - 1
TOTAL		28 - 23	1759:20	11	4	26	43	.256	26	.605	3	2 - 2

Single Game Highs

Statistic	Value	
Points	4	vs Grambling 09/02/22, vs Southern Miss. 08/20/23
Goals	2	vs Grambling 09/02/22, vs Southern Miss. 08/20/23
Assists	1	4 times
Shots	5	vs Tex. A&M-Commerce 09/03/23



11 Angelina Thoreson

Forward

Sophomore

Uppsala, Sweden

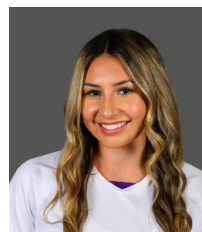
IK Uppsala

THORESON, Angelina

SEASON	TEAM	GP-GS	Min.	G	A	Pts	Shot	Shot%	SOG	SOG%	GW	PK-Att
2022-23	LSU	21 - 17	1240:15	1	9	11	29	.034	13	.448	1	0 - 0
TOTAL		21 - 17	1240:15	1	9	11	29	.034	13	.448	1	0 - 0

Single Game Highs

Statistic	Value	
Points	2	at Princeton 09/08/22
Goals	1	at Princeton 09/08/22
Assists	1	9 times
Shots	5	at Rutgers 09/11/22



12 Laney Gonzales

Defender

Sophomore

Magnolia, Texas

Magnolia HS

GONZALES, Laney

SEASON	TEAM	GP-GS	Min.	G	A	Pts	Shot	Shot%	SOG	SOG%	GW	PK-Att
2022-23	LSU	15 - 0	369:46	0	1	1	6	.000	1	.167	0	0 - 0
2023-24	LSU	7 - 0	229:24	0	1	1	2	.000	2	1.000	0	0 - 0
TOTAL		22 - 0	599:10	0	2	2	8	.000	3	.375	0	0 - 0

Single Game Highs

Statistic	Value	
Points	1	vs Grambling 09/02/22, vs Tex. A&M-Commerce 09/03/23
Assists	1	vs Grambling 09/02/22, vs Tex. A&M-Commerce 09/03/23
Shots	2	vs Grambling 09/02/22



13 Taylor Dobles

Forward

RS Senior

Pembroke Pines, Florida

American Heritage

DOBLES, Taylor

SEASON	TEAM	GP-GS	Min.	G	A	Pts	Shot	Shot%	SOG	SOG%	GW	PK-Att
2020-21	LSU	18 - 14	1057:53	3	2	8	18	.167	10	.556	1	0 - 0
2021-22	LSU	19 - 1	463:00	0	0	0	7	.000	2	.286	0	0 - 0
2022-23	LSU	21 - 9	880:37	2	2	6	12	.167	6	.500	1	0 - 0
2023-24	LSU	9 - 6	409:00	4	0	8	15	.267	11	.733	1	0 - 0
TOTAL		67 - 30	2810:31	9	4	22	52	.173	29	.558	3	0 - 0

Statistic	Value	
Points	4	4 times
Goals	2	4 times
Assists	1	4 times
Shots	3	5 times



15 Jordan Johnson

Midfielder

Senior

Denver, Colorado

Prairie View HS

JOHNSON, Jordan

SEASON	TEAM	GP-GS	Min.	G	A	Pts	Shot	Shot%	SOG	SOG%	GW	PK-Att
2020-21	LSU	17 - 5	627:22	0	0	0	12	.000	6	.500	0	0 - 0
2021-22	LSU	14 - 3	430:35	1	1	3	9	.111	3	.333	0	0 - 0
2022-23	LSU	20 - 2	617:47	1	1	3	17	.059	8	.471	0	0 - 0
2023-24	LSU	9 - 6	501:25	1	2	4	10	.100	3	.300	0	0 - 0
TOTAL		60 - 16	2177:08	3	4	10	48	.063	20	.417	0	0 - 0

Single Game Highs

Statistic	Value	
Points	3	vs Southern U. 08/27/23
Goals	1	vs Southern Miss. 08/19/21, vs SFA 08/18/22, vs Southern U. 08/27/23
Assists	1	4 times
Shots	3	5 times



17 Caley Swierenga

Defender

Freshman

Denver, Colorado

Lutheran HS

SWIERENGA, Caley

SEASON	TEAM	GP-GS	Min.	G	A	Pts	Shot	Shot%	SOG	SOG%	GW	PK-Att
2023-24	LSU	6 - 1	238:03	0	2	2	3	.000	2	.667	0	0 - 0
TOTAL		6 - 1	238:03	0	2	2	3	.000	2	.667	0	0 - 0

Single Game Highs

Statistic	Value	
Points	2	vs Tex. A&M-Commerce 09/03/23
Assists	2	vs Tex. A&M-Commerce 09/03/23
Shots	1	vs Tex. A&M-Commerce 09/03/23, vs Northwestern St. 09/10/23, at Ole Miss 09/15/23



18 Kelsey Major

Midfielder

Redshirt Freshman

New Orleans, La.

St. Mary's Dominican HS

MAJOR, Kelsey

SEASON	TEAM	GP-GS	Min.	G	A	Pts	Shot	Shot%	SOG	SOG%	GW	PK-Att
2023-24	LSU	9 - 0	275:47	2	1	5	8	.250	3	.375	0	0 - 0
TOTAL		9 - 0	275:47	2	1	5	8	.250	3	.375	0	0 - 0

Single Game Highs

Statistic	Value	
Points	4	vs Tex. A&M-Commerce 09/03/23
Goals	2	vs Tex. A&M-Commerce 09/03/23
Assists	1	vs Southern Miss. 08/20/23
Shots	4	vs Tex. A&M-Commerce 09/03/23



19 Andrea Ilijkic

Forward

Freshman

Littleton, Colo.

Columbine HS



20 Ava Galligan

Forward/Midfielder

Freshman

Ashburn, Va.

Independence HS

GALLIGAN, Ava

SEASON	TEAM	GP-GS	Min.	G	A	Pts	Shot	Shot%	SOG	SOG%	GW	PK-Att
2023-24	LSU	9 - 7	521:59	1	4	6	15	.067	4	.267	0	0 - 0
TOTAL		9 - 7	521:59	1	4	6	15	.067	4	.267	0	0 - 0

Single Game Highs

Statistic	Value	
Points	3	vs Pepperdine 09/07/23
Goals	1	vs Pepperdine 09/07/23
Assists	1	4 times
Shots	4	vs Pepperdine 09/07/23



21 Tori Gillis

Midfielder

Junior

Leesburg, Va.

Loudon County HS

GILLIS, Tori

SEASON	TEAM	GP-GS	Min.	G	A	Pts	Shot	Shot%	SOG	SOG%	GW	PK-Att
2022-23	LSU	2 - 0	14:42	0	0	0	0	.000	0	.000	0	0 - 0
2023-24	LSU	8 - 4	447:04	0	1	1	1	.000	1	1.000	0	0 - 0
TOTAL		10 - 4	461:46	0	1	1	1	.000	1	1.000	0	0 - 0

Single Game Highs

Statistic	Value	
Points	1	vs Pepperdine 09/07/23
Assists	1	vs Pepperdine 09/07/23
Shots	1	at Wisconsin 08/31/23



23 Raelyn Prince

Midfielder

Sophomore

Titusville, Fla.

Titusville HS

PRINCE, Raelyn

SEASON	TEAM	GP-GS	Min.	G	A	Pts	Shot	Shot%	SOG	SOG%	GW	PK-Att
2022-23	LSU	18 - 5	661:23	2	2	6	18	.111	7	.389	1	0 - 0
2023-24	LSU	8 - 1	282:45	1	2	4	13	.077	4	.308	0	0 - 0
TOTAL		26 - 6	944:08	3	4	10	31	.097	11	.355	1	0 - 0

Single Game Highs

Statistic	Value	
Points	3	at San Diego 08/28/22, vs Tex. A&M-Commerce 09/03/23
Goals	1	at San Diego 08/28/22, vs Missouri 09/22/22, vs Tex. A&M-Commerce 09/03/23
Assists	1	4 times
Shots	4	at Ole Miss 09/15/23



24 Bella Zanolelli

Goalkeeper

Senior

Pueblo West, Colo.

Cheyenne Mountain HS

ZANOTELLI, Bella

SEASON	TEAM	GP-GS	Min.	G	A	Pts	Shot	Shot%	SOG	SOG%	GW	PK-Att
2020-21	LSU	4 - 2	270:00	0	0	0	0	.000	0	.000	0	0 - 0
2021-22	LSU	2 - 0	63:52	0	0	0	0	.000	0	.000	0	0 - 0
2022-23	LSU	6 - 2	216:47	0	0	0	0	.000	0	.000	0	0 - 0
2023-24	LSU	3 - 0	71:33	0	0	0	0	.000	0	.000	0	0 - 0
TOTAL		15 - 4	622:12	0	0	0	0	.000	0	.000	0	0 - 0

SEASON	TEAM	GP-GS	Minutes	GA	GAAvg	Saves	Save%	W	L	T	SHO/CBO
2020-21	LSU	4 - 2	270:00	4	1.34	9	.692	1	2	0	1/1
2021-22	LSU	2 - 0	63:52	1	1.41	2	.667	0	0	0	0/1
2022-23	LSU	6 - 2	216:47	2	0.84	5	.714	3	0	0	0/1
2023-24	LSU	3 - 0	71:33	0	0	0	.000	0	0	0	0/2
TOTAL		15 - 4	622:12	7	1.02	16	.696	4	2	0	1/5

Single Game Highs

Statistic	Value	
Saves	4	vs Missouri 09/22/22



25 Abby Smith

Midfielder

Senior

Flower Mound, Texas

Flower Mound HS

SMITH, Abby

SEASON	TEAM	GP-GS	Min.	G	A	Pts	Shot	Shot%	SOG	SOG%	GW	PK-Att
2020-21	LSU	5 - 0	144:52	0	0	0	4	.000	2	.500	0	0 - 0
2022-23	LSU	2 - 0	14:06	0	0	0	0	.000	0	.000	0	0 - 0
2023-24	LSU	3 - 0	40:15	0	0	0	1	.000	0	.000	0	0 - 0
TOTAL		10 - 0	199:13	0	0	0	5	.000	2	.400	0	0 - 0

Single Game Highs

Statistic	Value	
Shots	4	vs Southern U. 03/05/21



27 Britney Bertram

Forward

Graduate Student

Slidell, Louisiana

Northshore HS

BERTRAM, Britney

SEASON	TEAM	GP-GS	Min.	G	A	Pts	Shot	Shot%	SOG	SOG%	GW	PK-Att
2019-20	Stet	12 - 6	602:22	0	1	1	12	.000	3	.250	0	0 - 0
2020-21	Stet	9 - 6	578:08	1	1	3	9	.111	4	.444	0	0 - 0
2022-23	LSU	8 - 0	140:17	0	0	0	1	.000	1	1.000	0	0 - 0
2023-24	LSU	9 - 3	304:21	2	0	4	8	.250	6	.750	0	0 - 0
TOTAL FOR LSU		17 - 3	444:38	2	0	4	9	.222	7	.778	0	0 - 0
TOTAL		38 - 15	1625:08	3	2	8	30	.100	14	.467	0	0 - 0

Single Game Highs

Statistic	Value	
Points	2	at Jacksonville 02/28/21, vs Southern U. 08/27/23, vs Tex. A&M-Commerce 09/03/23
Goals	1	at Jacksonville 02/28/21, vs Southern U. 08/27/23, vs Tex. A&M-Commerce 09/03/23
Assists	1	vs Rollins 08/25/19, vs Ga. Southern 02/13/21
Shots	3	vs Ga. Southern 09/05/19



28 Brielyn Knowles

Midfielder

Freshman

Orlando, Fla.

Windermere Preparatory School

KNOWLES, Brielyn

SEASON	TEAM	GP-GS	Min.	G	A	Pts	Shot	Shot%	SOG	SOG%	GW	PK-Att
2023-24	LSU	3 - 0	75:53	0	0	0	0	.000	0	.000	0	0 - 0
TOTAL		3 - 0	75:53	0	0	0	0	.000	0	.000	0	0 - 0



29 Jaden Humbyrd

Midfielder

Junior

Issaquah, Washington

Issaquah HS

HUMBYRD, Jaden

SEASON	TEAM	GP-GS	Min.	G	A	Pts	Shot	Shot%	SOG	SOG%	GW	PK-Att
2022-23	LSU	14 - 6	464:02	0	0	0	3	.000	1	.333	0	0 - 0
2023-24	LSU	6 - 2	256:22	0	0	0	4	.000	2	.500	0	0 - 0
TOTAL		20 - 8	720:24	0	0	0	7	.000	3	.429	0	0 - 0

Single Game Highs

Statistic	Value	
Shots	3	vs Northwestern St. 09/10/23



32 Alyson Campbell

Goalkeeper
Freshman
Boulder, Colo.
Fairview HS



38 Rammie Noel

Defender
Graduate Student
Lafayette, La.
Acadiana HS

NOEL, Rammie

SEASON	TEAM	GP-GS	Min.	G	A	Pts	Shot	Shot%	SOG	SOG%	GW	PK-Att
2019-20	LSU	18 - 15	1387:03	1	1	3	8	.125	5	.625	0	0 - 0
2020-21	LSU	19 - 14	1322:04	1	0	2	10	.100	6	.600	0	0 - 0
2021-22	LSU	20 - 13	1144:25	3	3	9	6	.500	4	.667	0	0 - 0
2022-23	LSU	19 - 18	1116:16	1	2	4	7	.143	3	.429	0	0 - 0
2023-24	LSU	9 - 9	570:05	2	2	6	7	.286	3	.429	1	0 - 0
TOTAL		85 - 69	5539:54	8	8	24	38	.211	21	.553	1	0 - 0

Single Game Highs

Statistic	Value	
Points	2	9 times
Goals	1	8 times
Assists	2	at South Fla. 08/26/21
Shots	4	vs Mississippi St. 10/24/19

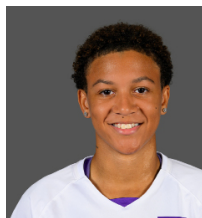


39 Sarah Portis

Defender
Redshirt Sophomore
Anaheim, Calif.
Dana Hills HS

PORTIS, Sarah

SEASON	TEAM	GP-GS	Min.	G	A	Pts	Shot	Shot%	SOG	SOG%	GW	PK-Att
2023-24	LSU	2 - 0	13:37	0	0	0	0	.000	0	.000	0	0 - 0
TOTAL		2 - 0	13:37	0	0	0	0	.000	0	.000	0	0 - 0



50 Sage Glover

Forward

Sophomore

Atlanta, Ga.

North Atlanta HS

GLOVER, Sage

SEASON	TEAM	GP-GS	Min.	G	A	Pts	Shot	Shot%	SOG	SOG%	GW	PK-Att
2022-23	LSU	21 - 7	755:06	4	0	8	14	.286	8	.571	0	0 - 0
2023-24	LSU	8 - 1	270:52	2	0	4	4	.500	4	1.000	1	0 - 0
TOTAL		29 - 8	1025:58	6	0	12	18	.333	12	.667	1	0 - 0

Single Game Highs

Statistic	Value
Points	2 6 times
Goals	1 6 times
Shots	3 vs SFA 08/18/22



71 Mollie Baker

Forward

Redshirt Junior

Gilbert, Ariz.

North Carolina/Williams Field HS

BAKER, Mollie

SEASON	TEAM	GP-GS	Min.	G	A	Pts	Shot	Shot%	SOG	SOG%	GW	PK-Att
2020-21	UNC	7 - 0	110:07	0	0	0	9	.000	5	.556	0	0 - 0
2021-22	UNC	7 - 0	99:20	0	1	1	4	.000	2	.500	0	0 - 0
2022-23	LSU	21 - 9	1103:31	4	6	14	48	.083	17	.354	1	0 - 0
2023-24	LSU	9 - 9	578:30	3	3	9	38	.079	16	.421	1	0 - 0
TOTAL FOR LSU		30 - 18	1682:01	7	9	23	86	.081	33	.384	2	0 - 0
TOTAL		44 - 18	1891:28	7	10	24	99	.071	40	.404	2	0 - 0

Single Game Highs

Statistic	Value
Points	5 vs Southern Miss. 08/20/23
Goals	2 vs Southern Miss. 08/20/23
Assists	1 10 times
Shots	11 vs Northwestern St. 09/10/23