

2023 LSU VOLLEYBALL

MATCH NOTES | VS. NO. 13 ARKANSAS

Oct. 4



LSU VOLLEYBALL SCHEDULE

TIGER CLASSIC

Aug. 25 (F)	UCLA	SECN+	W, 3-2
Aug. 26 (S)	UCLA	SECN+	L, 3-2

BLUEJAY INVITATIONAL

Sept. 1 (F)	vs. UNI	FLO	L, 3-0
Sept. 2 (S)	at No. 20 Creighton	FLO	L, 3-0
Sept. 3 (Su)	vs. Ball State	FLO	W, 3-1

Sept. 6 (W)	UL-Lafayette	SECN+	W, 3-1
Sept. 10 (Su)	Southeastern La.	SECN+	L, 3-1

SMU INVITATIONAL

Sept. 15 (F)	vs. Texas A&M-CC		W, 3-0
Sept. 16 (S)	vs. Texas Tech		W, 3-0
Sept. 17 (Su)	at SMU	ESPN+	L, 3-0

Sept. 22 (F)	at No. 22 Kentucky*	SECN+	L, 3-1
--------------	---------------------	-------	--------

Sept. 29 (F)	Missouri*	SECN+	W, 3-1
Oct. 1 (Su)	Mississippi St.*	SECN	W, 3-1

Oct. 4 (W)	Arkansas*	SECN+	7 pm
Oct. 8 (Su)	at Tennessee*	ESPN2	Noon

Oct. 13 (F)	Texas A&M*	SECN	8 pm
Oct. 15 (Su)	at Georgia*	SECN+	1 pm

Oct. 22 (Su)	at Alabama*	SECN+	4 pm
--------------	-------------	-------	------

Oct. 27 (F)	Kentucky*	SECN	8 pm
Oct. 29 (Su)	South Carolina*	SECN+	1 pm

Nov. 1 (W)	at Ole Miss*	SECN	7 pm
Nov. 5 (Su)	Alabama*	SECN+	1 pm

Nov. 10 (F)	at Florida *	SECN+	6 pm
Nov. 12 (Su)	at South Carolina*	SECN+	1 pm

Nov. 17 (F)	Tennessee*	SECN+	7 pm
Nov. 19 (Su)	at Auburn*	SECN+	2 pm

Nov. 22 (W)	Georgia*	SECN	8 pm
Nov. 25 (Sa)	at Mississippi St.*	SECN+	3 pm

Bold Indicates Home

All times are central and subject to change

* - SEC Match

SECN - SEC Network

SECN+ - SEC Network Plus

FLO - Flosports

/LSUVOLLEYBALL

@LSUVOLLEYBALL

@LSUVOLLEYBALL

@LSUVOLLEYBALL

MATCHING UP



LSU Tigers

Record	7-6
SEC	2-1
vs. Top-25	0-2
Streak	W2
AVCA Ranking	NR
Head Coach	Tonya Johnson
Record at LSU	23-20
Season	2nd Season
Career Record	108-92
Season	7th Season



No. 13 Arkansas Razorbacks

Record	13-2
SEC	3-0
Streak	W11
AVCA Ranking	13
Head Coach	Jason Watson
Record at Arkansas	118-98
Season	8th Season
Career Record	318-246
Season	19th Season

TUNE IN TO THE TIGERS



- SEC Contest



- The PMAC
Baton Rouge, La.



- PxP, Lyn Rollins
Color, Fran Flory



- Oct. 4, 7 p.m. CT



- SECN+



- lsustats.com

TRACKING THE TIGERS

Head coach Tonya Johnson is in her second season leading the program. She is the sixth head coach for the LSU Tigers volleyball program.

Johnson played for the Tigers from 1987-90 and helped the program reach its first Final Four Appearance in 1990. She also served as an assistant coach under predecessor and AVCA Hall of Fame coach Fran Flory.

The LSU Tigers made its 16th appearance in the NCAA Tournament and its first since 2017. With a 3-1 victory over Hawaii, LSU won its first NCAA Tournament match since 2014.

The Tigers ended the 2022 season with a 16-14 overall record, marking their first winning season since 2019.

This season's 28-match schedule features 13 matches versus 10 opponents who were in the 2022 NCAA Tournament.

The Tigers won a pair of matches against Missouri and Mississippi St. to open their SEC home schedule. LSU dropped the first set before winning the next three in both matches.

LSU trails Arkansas in the all-time series 24-30 but are 6-2 in the last eight meetings, including last season's five-set upset over the No. 20 Razorbacks in Baton Rouge (Sept. 21).

LSU has a .245 hitting percentage with 12.82 kills per set (628 total), 12.00 assists per set, and 1.47 aces per set (72 total). Defensively, LSU averages 1.82 blocks per set and 13.22 digs per set.

Outside hitter Jurnee Robinson ranks No. 2 in the SEC with 4.11 kills per set and No. 6 with 4.61 points per set.

Middle blocker Anita Anwusi paces LSU with 36 total blocks (0.73/set) and a .373 hitting percentage that ranks No. 6 in the SEC. Anwusi has 105 total kills, averaging 2.14 kills per set.

Right side Jade Demps is second on the team with 2.41 kills per set (118 total) and has 21 total blocks, nine aces and averages 2.31 digs per set (113 total).

Outside hitter Sanaa Dotson logged her 1,000th career kill versus Missouri on Sept. 29. This season, Dotson is averaging 2.21 kills per set (95 total) and has 14 blocks and five aces.

Setter Maddie Waak ranks No. 7 in the SEC with 9.73 assists per set and leads the Tigers with 16 aces and 2.41 digs per set (118 total).

In the last eight matches, middle blocker Angie Lee has led LSU with 0.94 blocks per set (31 total) and has chipped in 43 kills.

Defensive specialist Erin Carmichael ranks in the top 30 among active career leaders in NCAA Division I volleyball with 1,573 career digs. This season, Carmichael has 2.35 digs per set (101 total) and adds 14 aces.

Defensive specialist Bri Anderson has also worn the libero jersey this season and averages 2.32 digs per set with 79 total digs in 34 sets played. Anderson is coming off a career-high three aces vs. Mississippi St. (Oct. 1).

LSU returns 11 players from the 2022 roster, including nine who logged playing time last season. The Tigers welcome nine newcomers to the 2023 roster, including three transfers.

The Tigers have five graduate student-athletes on the 2023 roster, including three LSU graduates in Anita Anwusi, Sanaa Dotson and Samarah Hill.

NUMERICAL ROSTER

NO.	NAME	POS	HT.	CL.-EXP	HOMETOWN (PREVIOUS SCHOOL)
0	Mackenzie Boyer	MB	6-3	Fr.-HS	Austin, Texas (Vandegrift HS)
1	Samarah Hill	OH	6-1	Gr.-3L	Oviedo, Fla. (Trinity Prep School)
2	Paige Flickinger	OH	5-9	Sr.-3L	Roanoke, Texas (Byron Nelson HS)
4	Angie Lee	MB	6-2	Fr.-HS	Long Island, N.Y. (Farmersville HS)
5	Jurnee Robinson	OH	6-1	Fr.-HS	Simpsonville, S.C. (Mauldin HS)
6	Madison Martin	DS/L	5-8	Jr.-2L	Ormond Beach, Fla. (Mt. Carmel Academy)
7	Bri Anderson	OH/DS	5-9	So.-1L	Gainesville, Fla. (Buchholz HS)
8	Ella Hemmings	DS/L	5-6	Fr.-HS	Brownsburg, Ind. (Brownsburg HS)
9	Sanaa Dotson	OH	6-0	Gr.-2L	Houston, Texas (Oklahoma)
10	Erin Carmichael	DS/L	5-7	Gr.-TR	Avon, Ind. (Jacksonville State)
11	Anita Anwusi	MB	6-3	Gr.-4L	Houston, Texas (Alief Hastings HS)
12	Alia Williams	MB	6-1	Sr.-2L	Houston, Texas (Kingwood Park HS)
13	AC Froehlich	OH	6-1	Fr.-HS	Lafayette, La. (St. Thomas More HS)
15	Bri Zamora	DS/L	5-4	So.-1L	League City, Texas (Clear Creek HS)
16	Ellie Echter	RS/OH	6-1	R-So.-1L	Fulshear, Texas (Fulshear HS)
17	Alexis Roberson	MB	6-3	R-Fr.-RS	Missouri City, Texas (Ridge Point HS)
20	Mika Rome	S	5-10	Fr.-HS	Ra'anana, Israel (Mekif HaSharon School)
22	Maddie Waak	S	5-10	So.-1L	Brookshire, Texas (Katy HS)
23	Jade Demps	RS	6-2	Sr.-TR	Raleigh, N.C. (Wisconsin)
29	Emily Mitter	S	5-9	Gr.-TR	Redondo Beach, Calif. (Campbell)

ALPHABETICAL ROSTER

NO.	NAME	POS	HT.	CL.-EXP	HOMETOWN (PREVIOUS SCHOOL)
7	Bri Anderson	OH/DS	5-9	So.-1L	Gainesville, Fla. (Buchholz HS)
11	Anita Anwusi	MB	6-3	Gr.-4L	Houston, Texas (Alief Hastings HS)
0	Mackenzie Boyer	MB	6-3	Fr.-HS	Austin, Texas (Vandegrift HS)
10	Erin Carmichael	DS/L	5-7	Gr.-TR	Avon, Ind. (Jacksonville State)
23	Jade Demps	RS	6-2	Sr.-TR	Raleigh, N.C. (Wisconsin)
9	Sanaa Dotson	OH	6-0	Gr.-2L	Houston, Texas (Oklahoma)
16	Ellie Echter	RS/OH	6-1	R-So.-1L	Fulshear, Texas (Fulshear HS)
2	Paige Flickinger	OH	5-9	Sr.-3L	Roanoke, Texas (Byron Nelson HS)
13	AC Froehlich	OH	6-1	Fr.-HS	Lafayette, La. (St. Thomas More HS)
8	Ella Hemmings	DS/L	5-6	Fr.-HS	Brownsburg, Ind. (Brownsburg HS)
1	Samarah Hill	OH	6-0	Gr.-3L	Oviedo, Fla. (Trinity Prep School)
4	Angie Lee	MB	6-2	Fr.-HS	Long Island, N.Y. (Farmersville HS)
6	Madison Martin	DS/L	5-8	Jr.-2L	Ormond Beach, Fla. (Mt. Carmel Academy)
29	Emily Mitter	S	5-9	Gr.-TR	Redondo Beach, Calif. (Campbell)
17	Alexis Roberson	MB	6-3	R-Fr.-RS	Missouri City, Texas (Ridge Point HS)
5	Jurnee Robinson	OH	6-1	Fr.-HS	Simpsonville, S.C. (Mauldin HS)
20	Mika Rome	S	5-10	Fr.-HS	Ra'anana, Israel (Mekif HaSharon School)
22	Maddie Waak	S	5-10	So.-1L	Brookshire, Texas (Katy HS)
12	Alia Williams	MB	6-1	Sr.-2L	Houston, Texas (Kingwood Park HS)
15	Bri Zamora	DS/L	5-4	So.-1L	League City, Texas (Clear Creek HS)

POST MATCH INTERVIEWS

Interviews with players and coaches are done courtside postmatch after the team's 10-minute cooling off period.

For assistance with opposing coaches and players, please contact the opposing school's SID for their postmatch media procedures.

SEC MEDIA INFORMATION

Jill Skotarczak is the volleyball media relations director for the SEC and can be reached at [205] 458-3000.

Each Monday, the league will name a Player of the Week, a Defensive Player of the Week and a Freshman of the Week.

The SEC Website, SECSports.com, can be accessed 24/7/365 to access updated standings, statistics and notes.

SPORTS INFORMATION/CREDENTIALS

Keonte' Herrera is the Communications Director for LSU Volleyball and coordinates all media relations duties, including interviews for players and coached. Keonte' can be reached at [254] 338-7609 or by e-mail at kkh@lsu.edu.

All media members are encouraged to apply for season credentials through Keonte'.

Single-game credentials can be picked up 60 minutes prior to match time at the press will call table located at the Northeast Corridor of the Maravich Center.

WWW.LSUSPORTS.NET

Information about the LSU volleyball, including player bios, game recaps and notes packets are available online at the Official Website of LSU Athletics, www.LSUsports.net.

COACHING STAFF

Head Coach	Tonya Johnson (LSU, 1993)
Associate Head Coach	Jill Wilson (LSU, 2001)
Assistant Coach	Kevin Inlow (Texas, 2016)
Assistant Coach	Ashley Shook (Texas, 2020)
Director of Ops.	Blaire Hiler (Kentucky, 2011)

PRONUNCIATION GUIDE

ANITA ANWUSI	Uh-KNEE-tah Ahn-WOO-See
SANAA Dotson	Suh-NAY
Ellie ECHTER	Ek-TUR
Paige FLICKINGER	Flick-in-JER
AC FROEHLICH	FRAY-lick
SAMARAH Hill	Suh-MARE-uh
Alexis ROBERSON	ROW-bur-son
JURNEE Robinson	like journey
MIKA Rome	MEE-cuh
Maddie WAAK	Wok
ALIA Williams	UH-lee-uh
Bri ZAMORA	zuh-MORE-uh

TEAM INFORMATION

2022 Record	16-14
2022 SEC Record	9-9
2022 Postseason	
	NCAA Tournament 2nd Round
2022 AVCA Final Ranking	NA
Letterwinners Returning/Lost	9/5
Starters Returning/Lost	5/3
Newcomers	9

PROGRAM HISTORY

All-Time Record	1,046-660 (.613)
All-Time SEC Record	342-263 (.565)
SEC Western Division Titles	7
Seasons	2005-2011
SEC Regular Season Titles	5
Seasons	1986, 1989, 1990, 1991, 2009
SEC Tournament Titles	4
Seasons	1986, 1989, 1990, 1991
NCAA Tournament Record	15-16 (.483)
NCAA Tournament Appearances	16
Seasons	1986-87, 1989-92, 2005-10, 2013-14, 2017, 2022
Final Four Appearances	2 (1990, 1991)

RESULTS

Final box scores, game-by-game stats, as well as overall stats for the entire season can also be found online at www.lsusports.net.

PRACTICE TIMES/INTERVIEWS

LSU will hold weekly media availability split between the volleyball practice facility and the main floor of the Pete Maravich Assembly Center. An email will be sent out to the media at the beginning of the week with details of the day, time and location for that week's practice availability. To be added on the media email list, please send a request to Keonte' Herrera at kkh@lsu.edu.

For specific features or longer form interview requests for Coach Johnson or any student-athlete by phone, zoom or in person, please contact Keonte' by phone or email. Requests for interviews must be made at least 24 hours in advance with Keonte'. Please do not contact Coach Johnson or student-athletes directly.

2023 TV/Radio Roster



No. 0 • Mackenzie Boyer
MB • 6-3 • Fr.



No. 1 • Samarah Hill
OH • 6-1 • Gr.



No. 2 • Paige Flickinger
OH • 5-9 • Sr.



No. 4 • Angie Lee
MB • 6-2 • Fr.



No. 5 • Jurnee Robinson
OH • 6-1 • Fr.



No. 6 • Madison Martin
DS/L • 5-8 • Jr.



No. 7 • Bri Anderson
DS/L • 5-9 • So.



No. 8 • Ella Hemmings
DS/L • 5-6 • Fr.



No. 9 • Sanaa Dotson
OH • 6-1 • Gr.



No. 10 • Erin Carmichael
DS/L • 5-7 • Gr.



No. 11 • Anita Anwusi
MB • 6-3 • Gr.



No. 12 • Alia Williams
MB • 6-1 • Sr.



No. 13 • AC Froehlich
OH • 6-1 • Fr.



No. 15 • Bri Zamora
DS/L • 5-4 • So.



No. 16 • Ellie Echter
RS/OH • 6-1 • R-So.



No. 17 • Alexis Roberson
MB • 6-3 • R-Fr.



No. 20 • Mika Rome
S • 5-10 • Fr.



No. 22 • Maddie Waak
S • 5-10 • So.



No. 23 • Jade Demps
RS • 6-2 • Sr.



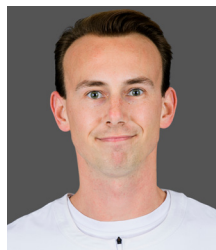
No. 29 • Emily Mitter
S • 5-9 • Gr.



Tonya Johnson
Head Coach
Second Season



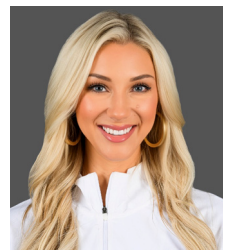
Jill Wilson
Associate Head Coach
Second Season



Kevin Inlow
Assistant Coach
Second Season



Ashley Shook
Assistant Coach
Second Season



Blaire Hiler
Director of Operations
Seventh Season

AVCA POLL

2023 AVCA/TARAFLEX Top 25 Coaches Poll (October 1)

Rk.	Team (1st Votes)	Points	Rec.	Prev.
1	Wisconsin (60)	1595	13-0	1
2	Nebraska (4)	1538	13-0	2
3	Stanford	1473	11-2	3
4	Washington State	1383	14-1	7
5	Oregon	1262	13-2	6
6	Louisville	1211	12-2	5
7	Pittsburgh	1182	13-2	8
8	Texas	1170	9-3	10
9	Florida	1165	11-2	4
10	BYU	994	13-3	9
11	Georgia Tech	953	13-1	11
12	Tennessee	914	13-1	12
13	Arkansas	824	13-2	14
14	Penn State	798	10-3	15
15	Creighton	677	12-3	16
16	Minnesota	655	6-6	13
17	Kansas	550	12-2	19
18	Baylor	434	7-6	18
19	Purdue	390	8-5	17
20	Dayton	323	15-2	21
21	Houston	240	7-5	20
22	Kentucky	199	5-7	23
23	Arizona State	165	15-1	25
24	Ohio State	156	5-8	22
25-T	Auburn	110	12-3	24
25-T	Iowa State	110	12-3	NR

Receiving Votes: Western Kentucky 81; Southern California 56; UCF 55; James Madison 34; North Carolina State 11; Marquette 10; Rice 10; Texas A&M 8; UC Santa Barbara 8; Pepperdine 6

TRACKING THE TIGERS

DATE	AVCA RANKING [VOTES]
Preseason	RV [28]
Week 1: August 28	RV [13]
Week 2: September 4	NR
Week 3: September 11	NR
Week 4: September 18	NR
Week 5: September 25	NR
Week 6: October 2	NR
Week 7: October 9	
Week 8: October 16	
Week 9: October 23	
Week 10: October 30	
Week 11: November 6	
Week 12: November 13	
Week 13: November 20	
Week 14: November 27	
Final Poll: December 18	

LAST TIME RANKED 15 [11/29/10]
MOST WEEKS RANKED 24 [09/04/06-10/15/07]
[10/12/09-11/29/10]
HIGHEST RANKING 10 [10/02/06, 10/26/06]

YEAR 2

Head coach Tonya Johnson returns for the second season after a hitstorial first season that saw the Tigers reach the NCAA Tournament for the first time since 2017 and win their first postseason match since 2014. Under Johnson's leadership, the Tigers posted a 16-14 record to secure the clubs first winning season since 2019.

As a student-athlete, Johnson helped LSU win a pair of SEC titles and was a member of the first team to reach the Final Four in 1990. She is one of five black head coaches in the Power Five of Division I volleyball (Marci Byers - Virginia Tech, Rashinda Reed - Alabama, Salima Rockwell - Notre Dame and Charita Stubbs - Arizona).

Johnson who played from 1987-1990, served as an assistant coach under Fran Flory from 1998-2002. Prior to her return, The Zachary, La. native was in her second stint at the University of Texas as the associate head coach and recruiting coordinator since 2014. Her two stints at Texas totaled 14 years with the Longhorns. In that time, they captured eight Big 12 titles, advanced to the NCAA Tournament 13 times, reached the Final Four five times, including three appearances in the national championship match and finished the seasons ranked in the top five in seven of the past eight years.

This is Johnson's second stint as a head coach after she compiled an 85-72 record at Georgia Tech from 2009-2013. At Georgia Tech, Johnson coached 10 All-ACC selections, including four-time All-American Monique Mead. Johnson led Geaorgia Tech to the NCAA Tournament in 2009.

AVCA RANKINGS

The SEC has five teams ranked in the latest AVCA Top 25 rankings, including three teams in the top 15 (No. 9 Florida, No. 12 Tennessee, No. 13 Arkansas). LSU will play both Arkansas and Tennessee this week. LSU currently has an adjusted RPI at No. 59.

The Tigers had four teams on their schedule who were ranked in the AVCA preseason poll, including No. 10 Kentucky, No. 11 Florida, No. 18 Creighton and No. 25 Arkansas. Three other teams on the season slate were receiving votes at the inception of the season, including Tennessee (84), Auburn (62) and Georgia (35).

THE SERIES

LSU trails Arkansas in the all-time series 24-30 but are 6-2 in the last eight meetings. Last season, LSU upset then No. 20 Arkansas in a tight five-set match (21-25, 25-18, 28-26, 21-25, 15-13) in its SEC home opener (Sept. 21, 2022).

A LOOK BACK

LSU went 2-0 in its home SEC weekend opener that featured two four-set wins over Missouri and Mississippi St. In both matches the Tigers dropped the first set, but rallied to win the next three.

LSU held both Missouri and Mississippi St. below a .200 hitting percentage, marking the fifth and sixth time they have achieved that feat over an opponent this season.

Against Missouri, LSU matched a season-high 12 blocks, and set a season-high of 65 digs against Mississippi St.

TIGER NUMBERS

LSU has a .245 hitting percentage behind 12.82 kills per set (588 total) and averages 12.00 assists per set (No. 6 in SEC) and 1.47 aces per set. Defensively, LSU averages 1.82 blocks per set and 13.22 digs per set.

HOME COOKING

The Tigers enter Wednesday's match with a 4-2 overall record and 2-0 mark when playing inside the PMAC this season. LSU's home wins have come against UCLA (Aug. 25), UL Lafayette (Sept. 6), Missouri (Sept. 29) and Mississippi St. (Oct. 1).

CARDIAC TIGERS

LSU opened the 2023 season with a pair of five-set matches that they split against UCLA. The Tigers played 11 five-set matches in 2022, including 10 times in SEC play. LSU was 7-4 overall in those matches and 7-3 in SEC five setters.

EXPERIENCED TIGERS

The Tigers return 11 student-athletes from the 2022 roster, including nine players who logged playing time.

Some of the top contibuting Tigers who are returning consist of outside hitter Sanaa Dotson and middle blocker Anita Anwusi who are lisred on the 2023 Preseason All-SEC Team. Other key returners include outside hitter Paige Flickinger, outside hitter Samarah Hill and setter Maddie Waak.

PORTAL REPORTS

LSU picked up key pieces from the transfer protal who look to have immediate impact in the Purple and Gold. The 2020 transfers for LSU includes Erin Carmichael (Jacksonville State), Jade Demps (Wisconsin) and Emily Mitter (Campbell).

THE NEWCOMERS

The Tigers freshman class is a talented bunch. Highlighting the six freshmen are outside hitters Jurnee Robinson and AC Froehlich, and middle blocker Angie Lee. Froehlich is the only member of the 2023 team from the state of Louisiana.

EMBRACE THE JURNEE

Freshman outside hitter Jurnee Robinson ranks No. 2 in the SEC with 4.11 kills per set. It is also the highest kill per set average among NCAA Division I freshmen. Her 4.61 points per set ranks No. 6 in the SEC.

Robinson has tallied three matches with 20 kills or more and has a .270 hitting percentage, 27 blocks, seven aces and 61 total digs.

ROBINSON EARNS SEC FRESHMAN OF THE WEEK

Jurnee Robinson won her first career SEC weekly accolade when she was named SEC Freshman of the Week on Aug. 28. Robinson made an immediate impact as she led LSU with 4.60 kills per set behind 46 total kills and a .319 hitting percentage in 10 sets over two matches against UCLA. In her collegiate debut, Robinson landed 23 kills with a .362 hitting percentage and added three blocks and an ace in the five-set win over UCLA. Robinson matched her 23-kill total the next night and secured her first double-double with 10 digs.

J5 RESUME

Robinson was selected to the USA Volleyball NDTP roster. She also led Mauldin High School to the 2022 South Carolina State Championship Title and was tabbed the 2022 Best Player in South Carolina by MaxPrep.

A IS FOR ANWUSI

Middle blocker Anita Anwusi ranks No. 6 in the SEC with a .373 hitting percentage. Anwusi also paces the Tigers with 36 total blocks (0.73/set), including three solo blocks, and has 105 total kills (2.14/set).

Anwusi has hit over .600 three times this season, including hitting .667 (13-1-18) twice.

Anwusi was honored as a 2022 AVCA South All-Region Honorable Mention after leading LSU with 1.14 blocks per set (136 total) last season. Anwusi also contributed 221 total kills behind a .289 hitting percentage in 2022.

ANWUSI TRAINS WITH USA VOLLEYBALL

Anwusi was selected to joined the USA Volleyball 2023 Women's Collegiate National Team (CNT) this summer to help train alongside the Women's National Team as they prepare for the Volleyball Nations League.

She became the sixth LSU player in program history to receive the Invitation to join the CNT which was formally known as the U.S. National A2 Program and was the first since 2013.

ADDED CHAMPIONSHIP PEDIGREE

Right side Jade Demps is second on the team with 118 total kills (2.41/set) and has 21 blocks, nine aces and 113 total digs (2.31/set) this season. She has totaled three double-doubles, including a season-high 15 kills with 10 digs vs. UL-Lafayette on Sept. 6.

Demps comes to LSU from Wisconsin with two years of eligibility remaining. With the Badgers, Demps helped the team reach three consecutive NCAA Tournament appearances that featured two Final Four appearances and the 2021 NCAA Division I Volleyball National Championship title.

A CAREER WEEKEND FOR DOTSON

Outside hitter Sanaa Dotson recorded her 1,000th career kill versus Missouri (Sept. 29) and followed that accolade with a career-high .591 hitting percentage behind a season-high 14 kills in the win over Mississippi St. (Oct. 1). For the weekend, Dotson led LSU with a .367 hitting percentage and had 20 kills over eight sets.

RIGHT ON THE DOT

Dotson averages 2.21 kills per set (95 total) and has five aces with 14 blocks.

Dotson was named to the 2022 AVCA South All-Region team for the first time in her career after leading LSU with 3.66 kills per set and had 436 total kills. Dotson also led the club with 25 aces last season and added 49 blocks to average 4.10 points per set. Dotson turned in nine double-doubles in 2022 and logged five 20-kill performances.

THE SETUP

Setter Maddie Waak ranks No. 7 in the conference with 9.73 assists per set. Waak also leads the team with 16 aces and 2.41 digs per set (118 total), and has 25 kills and 12 blocks.

Waak tallied a career-high 51 assists in the season opener vs. UCLA on Aug. 25, marking the most from a LSU player since Ella Larkin on Nov. 27, 2021 at Georgia. Waak has two matches with 50 or more digs after recording 50 vs. Mississippi St. (Oct. 1) and has tallied four double-doubles in 2023, and six total in her career.

DIGGING CARMICHAEL

Defensive specialist Erin Carmichael is second on the team with 2.35 digs per set (101 total), while also logging 14 aces this season.

She also ranks in the top 30 among NCAA Division I active career leaders with 1,573 career digs.

Carmichael recorded her second career double-double with 10 digs and 10 assists vs. UL-Lafayette (Sept. 6). She also turned in a single match career-high five aces, highlighted by four consecutive aces in the win vs. Ball State (09/03/23). She is the first to have five aces in a match since Taylor Bannister and Paige Flickinger did it at Auburn in 2021.

Carmichael is a two-time Ohio Valley Conference (OVC) Champion at Jacksonville State University.

NEW POSITION FOR NO. 7

Defensive specialist Bri Anderson has also received time in the libero jersey this season. Anderson is averaging 2.32 digs per set and has 79 total digs in 34 sets played. Anderson logged a career-high 16 digs at No. 22 Kentucky on Sept. 22 and set a career-high of three aces versus Mississippi State on Oct. 1 while also leading the team with 14 digs.

Anderson was recruited as an outside hitter, but lower body injuries has led her to the defensive specialist position where she is beginning to make her mark at a new position. In high school, Anderson was the 2019 Gainesville Large School Player of the Year.

FRESHMAN IMPACT

Since entering the lineup against Ball State on Sept. 3, middle blocker Angie Lee leads the team with 0.94 blocks per set and 31 total blocks (total blocks second on the team overall). Lee also has 43 kills this season.

Lee had an impressive outing in her collegiate debut vs. Ball State on Sept. 3 as she led LSU with six blocks in the match and added four kills.

Lee led Farmersville High School to a 2022 Area Championship title and was the District MVP in 2021-22, and Defensive Player of the Year in 2020-21.

THE EYE OF THE TIGER

Outside hitter Samarah Hill is coming off a season-high nine kills and nine digs in the win over Mississippi St. on Oct. 1. Hill won the Eye of the Tiger Award and LSU's annual Mikey's Awards Show. The Eye of the Tiger Award is presented to an LSU student-athlete who has overcome great adversity with perseverance, dedication and determination.

Hill returned to the floor in 2022 after dealing with a shoulder injury followed by an achilles tear that kept her sidelined since 2020. Hill finished last season with 119 total kills. She was a member of the 2019 SEC All-Freshman team prior to her injuries.

FLICK ON THE LIGHTS

Outside hitter Paige Flickinger has 17 kills, 69 digs and five aces this season. In Flickinger's first start in 2023, she logged eight kills and 13 digs with two aces and a block vs. Ball State (Sept. 3). Flickinger also matched a season-high 13 digs versus Mississippi St. (Oct. 1).

Flickinger was second on the team in 2022 with 2.65 kills per set (252 total kills) and added 20 aces, 2.55 digs per set (242 total digs) and 25 total blocks.

Flickinger also had nine double-doubles last season and played a significant role defensively as she had a stretch of double figure digs in six out of seven matches in 2022.

ON THE ROAD TO 2K

Setter Emily Mitter transfers in from Campbell and currently has 1,921 career assists - 79 shy of the 2,000.

Mitter's career averages are 4.88 assists per set and 2.06 digs per set (813 total). She also has 83 aces in 110 total matches played.

Last season Mitter finished No. 6 in the Big South with 5.71 assists per set (662 total) with 2.14 digs per set (248 total), 20 aces and four kills.

TURN UP THE AC

Outside hitter AC Froehlich led St. Thomas More High School to the 2022 Louisiana State Championship Title and was selected as the 2022 Louisiana Gatorade Player of the Year.

Froehlich is the only player on the 2023 roster from the state of Louisiana.

CAREER MILESTONES WATCH

Carmichael	1,573 career digs*
Dotson	1,019 career kills*
Flickinger	497 career kills
Hill	442 career kills
Mitter	1,921 career assists*

* Not all at LSU

SCHEDULE NOTES

The LSU volleyball team's 28-match regular schedule features 13 home matches, including nine SEC contests. They will play 13 total matches across 10 opponents who were participants in the 2022 NCAA Tournament, including nine matches versus six SEC opponents. LSU will also play six televised SEC matches this season with four of them inside the PMAC.

SOLID FOUNDATION

Last season (2022), LSU secured its first winning season since 2019 when the Tigers finished with an overall 16-14 record in Coach Johnson's first season.

SEC PRESEASON POLL

LSU was picked sixth in the SEC Preseason Coaches' Poll and accumulated 96 points. Kentucky and Florida, the reigning Co-SEC Champions finished one and two, respectively with 142 and 129 total points. Kentucky claimed 10 first-place votes and Florida picked up two first-place votes. Tennessee rounded out the top three with 113 points and received the final first-place vote.

SEC Preseason Coaches' Poll

Rank	School	Points
1.	Kentucky (10)	142
2.	Florida (2)	129
3.	Tennessee (1)	113
4.	Georgia	106
5.	Arkansas	101
6.	LSU	96
7.	Auburn	89
8.	Texas A&M	63
9.	Ole Miss	42
	Mississippi St.	42
11.	South Carolina	39
12.	Missouri	30
13.	Alabama	22

TIGER GRADUATES

LSU has a total of five graduates on the 2023 roster.

Anita Anwusi, Sanaa Dotson and Samarah Hill are all LSU graduates. Anwusi and Dotson recently graduated in May 2023.

Erin Carmichael and Emily Mitter are graduate transfers from Jacksonville State and Campbell, respectively.

SEASON TICKETS

The excitement is palpable concerning LSU volleyball as season tickets have tripled compared to the 2022 season.

Fans can purchase season tickets at lsusports.net/tickets/vb/ for as low as \$30 for general admission season tickets, \$60 for reserved seating, or purchase the courtside package for \$160.

2022 RECAP

LSU posted a 16-14 overall record including a 9-9 mark in SEC play during the 2022 season. The Tigers made their 16th appearance in the NCAA Tournament which was their first since 2017.

LSU Tigers was one of seven teams to represent the SEC in the NCAA Tournament last season and claimed the program's first NCAA Tournament match victory since 2014 after defeating Hawaii 3-1 in the first round.

THE STAFF

Jill Lytle Wilson, Kevin Inlow and Ashley Shook each enters their second season coaching at LSU.

Coach Wilson, the associate head coach, was the first hire by Coach Johnson and is an LSU alumna. Wilson, then named Lytle, played for the Tigers from 1997-2000 and spent 10 seasons as the assistant, then associate head coach at LSU. Overall while working at LSU, Wilson has helped the Tigers reach seven NCAA Tournament appearances and won the 2009 SEC Championship.

THE STAFF (CONT.)

Wilson previously served as the associate head coach at Ohio State for two seasons. She helped the Buckeyes to a 43-10 record, a 30-8 mark in the Big Ten and consecutive NCAA Regional Semifinal appearances. Wilson has been a head coach at Virginia Tech (2017-2020) and has also spent time as an assistant coach at North Carolina (2002-2004) and Wake Forest (2006).

Assistant coach Kevin Inlow was previously the lead assistant coach and recruiting coordinator at the University of North Florida for four seasons. Inlow helped guide UNF to four ASUN Championship appearances. Prior to that, he spent six years as the manager and graduate assistant for the University of Texas with Coach Johnson.

Assistant coach Ashley Shook previously served as the volunteer assistant coach in 2022 before being promoted. Prior to beginning her collegiate coaching career, Shook played two seasons of beach volleyball at Washington after playing four years of indoor volleyball at Texas from 2017-2020 as a setter. Shook helped Texas win four Big 12 Championship titles and reached the NCAA Tournament each season, including an appearance in the NCAA National Championship match in 2020.

NCAA VOLLEYBALL WEEK 1 TOP SHOTS



TIGER TRENDS

Overall	7-6
SEC	2-1
Non-Conference	5-5
Home	4-2
Away	0-3
Neutral	3-1
SEC Home	2-0
SEC Away	0-1
Non-Conference Home	2-2
Non-Conference Away	0-2
Non-Conference Neutral	3-1
Top 10 Opponents	0-0
Top 25 Opponents	0-2
Three-Set Matches	2-3
Four-Set Matches	4-2
Five-Set Matches	1-1
Win First Set	4-2
Lose First Set	3-4
Leading 2-0	3-0
Tied 1-1	4-2
Trailing 2-0	0-4
Leading 2-1	5-1
Trailing 2-1	0-2
Tied 2-2	1-1

SEC STANDINGS

TEAM	SEC	OVERALL
Tennessee	4-0	13-1
Arkansas	3-0	13-2
Florida	3-1	11-2
Kentucky	3-1	5-7
LSU	2-1	7-6
Auburn	2-2	12-3
Texas A&M	2-2	10-4
Missouri	2-2	10-5
Ole Miss	2-2	8-7
Mississippi St.	1-3	8-6
Alabama	0-3	10-43
Georgia	0-3	9-6
South Carolina	0-4	6-7

LSU - 2023-24 Women's Volleyball Ranking Summary thru games 10/01/2023

Statistic	National Rank	Conference Rank	Value	National Leader	Value	Conference Leader	Value
Aces Per Set (332 ranked)	198	9	1.47	UCF	2.58	Tennessee	2.28
Assists Per Set (332 ranked)	90	6	12.00	Stanford	13.82	Tennessee	13.51
Blocks Per Set (332 ranked)	232	13	1.82	Pittsburgh	3.27	Texas A&M	3.00
Digs Per Set (332 ranked)	241	8	13.22	Rice	19.47	Ole Miss	15.02
Hitting Percentage (332 ranked)	64	7	0.245	Arizona St.	0.322	Tennessee	0.311
Kills Per Set (332 ranked)	100	7	12.82	Eastern Ky.	14.78	Tennessee	14.70
Match W-L Pctg. (328 ranked)	149	10	0.538	The Citadel Nebraska Wisconsin	1.000 1.000 1.000	Tennessee	0.929
Opp Hitting Percentage (332 ranked)	273	12	0.234	Pittsburgh	0.116	Tennessee	0.164
Team Assists (332 ranked)	240	11	588	UIC	918	Ole Miss	706
Team Attacks Per Set (332 ranked)	235	9	32.88	Tulsa	39.15	South Carolina	36.02
Team Digs (332 ranked)	282	10	648	Oakland	1,229	Ole Miss	841
Team Kills (332 ranked)	246	11	628	UIC	983	Ole Miss	752
Team Service Aces (332 ranked)	253	9	72	Hofstra	149	Arkansas	120
Team Total Attacks (332 ranked)	289	10	1,611	Oakland	2,614	Ole Miss	1,949
Team Total Blocks (332 ranked)	282	13	89.0	SFA	181.0	Texas A&M	153.0

Statistic	Player	National Rank	Conference Rank	Value	National Leader	Value	Conference Leader	Value
Aces Per Set (148 ranked)					Camryn Haworth, Indiana	0.72	Kendyl Reaugh, Alabama	0.57
Assists Per Set (150 ranked)	Maddie Waak	71	6	9.73	Kami Miner, Stanford	11.77	Caroline Kerr, Tennessee	11.32
Attacks Per Set (150 ranked)					Kayley Cassaday, Tulsa	14.78	Akasha Anderson, Auburn	11.04
Blocks Per Set (299 ranked)	Angie Lee	265	19	0.94	Ifenna Cos-Okpalla, Texas A&M	1.90	Ifenna Cos-Okpalla, Texas A&M	1.90
Digs Per Set (149 ranked)					Hope Matschner, Iona	6.59	Cammy Niesen, Ole Miss	4.59
Hitting Percentage (150 ranked)	Anita Anwusi	66	5	0.373	Annamarie Alvarez, UIW	0.505	Payton Brgoch, Ole Miss	0.426
Kills Per Set (1460 ranked)	Jurnee Robinson Jade Demps Sanaa Dotson Anita Anwusi Angie Lee	30 588 732 792 1414	2 34 37 39 56	4.11 2.41 2.21 2.14 1.30	Giulia Cardona, Evansville	5.49	Jillian Gillen, Arkansas	4.17
Kills SG Highs (0 ranked)								
Points (150 ranked)	Jurnee Robinson	135	6	216.5	Kayley Cassaday, Tulsa	345.0	Sophie Fischer, Georgia	273.5
Points Per Set (150 ranked)	Jurnee Robinson	42	6	4.61	Giulia Cardona, Evansville	6.21	Sophie Fischer, Georgia	5.06
Service Aces (136 ranked)					Camryn Haworth, Indiana	41	Kendyl Reaugh, Alabama	28
Total Assists (150 ranked)	Maddie Waak	113	8	477	Beatriz Alves, Hofstra	669	Hannah Hogue, Arkansas	603
Total Attacks (148 ranked)					Kayley Cassaday, Tulsa	887	Taylor Head, Arkansas	555
Total Blocks (185 ranked)					Ifenna Cos-Okpalla, Texas A&M	95	Ifenna Cos-Okpalla, Texas A&M	95
Total Digs (299 ranked)					Hope Matschner, Iona	402	Cammy Niesen, Ole Miss	257
Total Kills (149 ranked)	Jurnee Robinson	116	5	193	Kayley Cassaday, Tulsa	324	Jillian Gillen, Arkansas	225
Triple Doubles (11 ranked)					Ashley Wang, Harvard	5		

2023 HONORS & AWARDS

Anita Anwusi
Preseason All-SEC
SMU Invitational All-Tournament Team (Sept. 15-17)
Sanaa Dotson
Preseason All-SEC
Jurnee Robinson
SEC Freshman of the Week (Aug. 28)
Bluejay Invitational All-Tournament Team (Sept. 1-3)
SMU Invitational All-Tournament Team (Sept. 15-17)

LAST TIME LSU...

LSU lost the first set in a win
10/1/23, vs. Mississippi St. [W, 3-1]
LSU lost the first 2 sets in a win
11/12/21, at Ole Miss [W, 3-2]
LSU was down 2-1 in a win
10/19/22, at Alabama [W, 3-2]
LSU won the first set in a loss
9/22/23, at No. 22 Kentucky [L, 3-1]
LSU won the first 2 sets in a loss
10/27/17, vs. No. 6 Kentucky [L, 3-2]
LSU was up 2-1 in a loss
8/26/23, UCLA [L, 3-2]
LSU beat a ranked opponent
9/24/22, at No. 15 Kentucky [W, 3-2]
LSU beat a ranked opponent at home
9/21/22, No. 20 Arkansas [W, 3-2]
LSU beat a ranked opponent on the road
9/24/22, at No. 15 Kentucky [W, 3-2]
LSU beat a ranked opponent at a neutral site
12/6/13, vs. No. 24 Michigan [W, 3-2]
LSU beat a Top 10 opponent
11/13/09, at No. 10 Florida [W, 3-1]

HITTING PERCENTAGE
LSU hit over .400 as a team
.419 [47-8-93], vs. Missouri [10/6/21]
LSU hit over .500 as a team
.524 [51-8-82], vs. Grambling State [9/2/11]
LSU hit over .500 as a team in a set
.600 [19-1-30], Southeastern Louisiana [9/10/23]
LSU's opponent hit over .300 as a team
.327 [44-11-101], at SMU [9/17/23]
LSU held an opponent under .100 hitting
.093 [29-19-107], vs. Texas Tech [9/16/23]
LSU hit less than .200
.135 [40-22-133], at No. 22 Kentucky [9/22/23]
LSU hit less than .100
.080 [39-28-138], at Tennessee [11/06/22]
LSU hit less than .200 & won
.135 [58-34-178], at Alabama [10/19/22]
LSU hit less than .150 & won
.135 [58-34-178], at Alabama [10/19/22]
LSU outhit the opponent & lost
.167-.150, vs. Mississippi State [10/30/22]
LSU was outhit & won
.234-.214, at Tennessee [11/24/17]

KILLS
LSU had 60 + kills 62, Southeastern Louisiana [9/10/23]
LSU had 80 + kills 80, vs. Ole Miss [10/23/11]

ASSISTS
LSU had 60 + assists 63, UCLA [8/25/23]
LSU had 80 + assists 80, at Tennessee [10/12/07]

DIGS
LSU had 80 + digs 96, vs. Mississippi State [10/29/22]
LSU had 100 + digs 108, vs. Mississippi State [10/30/22]

BLOCKS
LSU had 15-19.5 blocks 15.0, at Alabama [10/19/22]
LSU had 20 + blocks 20.0, vs. Troy [9/18/21]
LSU was out-blocked & won 12.0-2.0, vs. Mississippi St. [10/1/23]

ACES
LSU had 10 + aces 15, vs. Ball State [9/3/23]

LAST TIME A TIGER...

KILLS
Five LSU players had 10+ kills Ole Miss [11/7/18]
Taylor Bannister [22], Toni Rodriguez [16], Whitney Foreman [12], Milan Stokes [11], Olivia Beyer [11]
Four LSU players had 10+ kills UCLA [8/25/23]
Jurnee Robinson [23], Jade Demps [14], Anita Anwusi [13], Sanaa Dotson [12]
Three LSU players had 15+ kills at Tennessee [11/24/17]
Taylor Bannister [16], Jacqui Armer [15], Toni Rodriguez [15]
No LSU players had 10+ kills vs. Texas A&M-Corpus Christi [9/15/23]
An LSU player had 20 or more kills Jurnee Robinson [22], Southeastern Louisiana [9/10/23]
An LSU player had 25 or more kills Taylor Bannister [29] at Georgia [11/27/21]
An LSU player had 30 or more kills Taylor Bannister [30] vs. Georgia [03/19/21]
An LSU player had 40 or more kills Monique Adams [43], No. 10 Florida [12/14/91]
An LSU player had 20 + kills and 20 + digs Angela Bensed [20 kills, 26 digs], at TCU [09/03/10]
An LSU player had back-to-back double-doubles Paige Flickinger
11 kills, 10 digs [vs. Georgia 11/26/22]; 11 kills, 10 digs [vs. Hawai'i 12/2/22]
An LSU player had 5 straight double-doubles Ella Larkin
[5; 2021 Season] 44 assists, 18 digs [at Ole Miss, 11/11/21];
49 assists, 18 digs [at Ole Miss, 11/12/21]; 39 assists, 10 digs [Texas A&M, 11/21/21]
45 assists, 14 digs [at Georgia, 11/26/21]; 51 assists, 11 digs [at Georgia, 11/27/21]
An LSU player had a triple-double Malorie Pardo
40 assists, 11 digs, 10 kills, vs. South Florida [08/29/14]

ATTEMPTS
An LSU player had 50 or more attempts Sanaa Dotson [51], at Missouri [11/12/22]
An LSU player had 60 or more attempts Sanaa Dotson [66], vs. Mississippi State [10/30/22]
An LSU player had 70 or more attempts Taylor Bannister [71], at Texas A&M [10/18/20]

HITTING PERCENTAGE [10 OR MORE ATTEMPTS]
An LSU player had a .400 hitting percentage Anita Anwusi [7-1-13, .462], vs. Texas Tech [9/16/23]
An LSU player had a .500 hitting percentage Sanaa Dotson [14-1-22, .591], vs. Mississippi St. [10/1/23]
An LSU player had a .600 hitting percentage Anita Anwusi [13-1-18, .667], vs. SLU [9/10/23]
An LSU player had a .700 hitting percentage Anita Anwusi [8-1-10, .700], at Mississippi State [10/2/21]
An LSU player had an .800 hitting percentage Malorie Pardo [10-0-12, .833] vs. South Florida [8/29/14]
An LSU player had a .900 hitting percentage Allee Morris [10-0-11, .909], vs. Texas A&M [11/21/21]

ASSISTS
An LSU player had 50 or more assists Maddie Waak [50], Mississippi St. [10/1/23]
An LSU player had 60 or more assists Lindsay Flory [60], vs. South Carolina [11/18/18]
An LSU player had 70 or more assists Daniela Romero [74], at No. 13 Tennessee [09/15/06]
An LSU player had 80+ assists Lauren O'Connor [84], at Mississippi State [11/08/98]
Two LSU players had 20+ assists Maddie Waak [22] & Josie Vondran [21], vs. Hawai'i [12/2/22]

DIGS
Five LSU players had 10 + digs vs. Mississippi State [10/30/22]
Ella Larkin [31], Jill Bohnet [21], Paige Flickinger [18], Maddie Waak [17], Sanaa Dotson [12]
Three LSU players had 15 + digs vs. Mississippi State [10/30/22] (4)
Ella Larkin [31], Jill Bohnet [21], Paige Flickinger [18], Maddie Waak [17]
Two LSU players had 20 + digs Ella Larkin [31], Jill Bohnet [21] vs. Mississippi State [10/30/22]
An LSU player recorded 20-24 digs Maddie Waak [20], vs. ULL [9/6/23]
An LSU player recorded 25-29 digs Jill Bohnet [26], Ella Larkin [22], vs. Mississippi State [10/29/22]
An LSU player recorded 30-39 digs Ella Larkin [31], vs. Mississippi State [10/30/22]
An LSU player recorded 40 + digs Meghan Mannari [40], at Auburn [10/19/12]

BLOCKS
An LSU player had 7-9 blocks Alia Williams [7], vs. Hawai'i [12/2/22]
An LSU player had 10 + blocks Whitney Foreman [10], vs. Sam Houston State [9/11/21]
An LSU player had 4 solo blocks Sydney Mukes [4], at Ole Miss [10/7/18]
An LSU player had 5 + solo blocks Ivana Kuzmic [6], Houston [11/27/04]

ACES
An LSU player had 5 aces Erin Carmichael [5], vs. Ball State [9/3/23]
An LSU player had 6 aces Ella Larkin [6], at No. 15 Florida [10/8/22]
An LSU player had 7 + aces Kylie DeBerg [7], vs. Texas A&M [11/21/21]
An LSU player had 10 + aces Wendy Stammer [10], Texas Tech [09/14/86]
Three LSU players had multiple aces DeBerg [3], Larkin [3], Bannister [2], at Georgia [11/27/21]
Five LSU players had multiple aces Carmichael [5], Demps [3], Flickinger [2], Robinson [2],
Waak [2], vs. Ball State [9/3/23]

LSU had 0 aces as a team vs. No. 20 Florida [10/9/21]

2023 COMBINED STATS

Overall	Conference	Home	Away	Neutral
7 - 6	2 - 1	4 - 2	0 - 3	3 - 1

Team Box Score

			Attack					Set		Serve				Dig		Blocking						
##	Player	SP	K	K/S	E	TA	PCT	A	A/S	SA	SE	SA/S	RE	DIG	DIG/S	BS	BA	TOT/S	BLK/S	BE	BHE	PTS
1	Hill, Samarah	13	20	1.54	11	65	.138	2	0.15	0	2	0.00	1	22	1.69	0	4	4	0.31	1	0	22.0
2	Flickinger, Paige	35	17	0.49	11	70	.086	4	0.11	5	7	0.14	5	69	1.97	2	0	2	0.06	1	0	24.0
4	Lee, Angie	33	43	1.30	17	108	.241	0	0.00	0	0	0.00	0	9	0.27	4	27	31	0.94	3	0	60.5
5	Robinson, Jurnee	47	193	4.11	74	440	.270	2	0.04	7	26	0.15	11	61	1.30	6	21	27	0.57	7	2	216.5
6	Martin, Madison	1	0	0.00	0	0	.000	0	0.00	0	0	0.00	0	0	0.00	0	0	0	0.00	0	0	0.0
7	Anderson, Bri	34	1	0.03	0	3	.333	13	0.38	3	15	0.09	4	79	2.32	0	0	0	0.00	0	0	4.0
8	Hemmings, Ella	39	0	0.00	0	0	.000	7	0.18	10	6	0.26	0	18	0.46	0	0	0	0.00	0	0	10.0
9	Dotson, Sanaa	43	95	2.21	37	279	.208	4	0.09	5	9	0.12	7	34	0.79	1	13	14	0.33	1	0	107.5
10	Carmichael, Erin	43	0	0.00	0	1	.000	45	1.05	14	24	0.33	7	101	2.35	0	0	0	0.00	0	0	14.0
11	Anwusi, Anita	49	105	2.14	29	204	.373	2	0.04	0	1	0.00	0	11	0.22	3	33	36	0.73	10	0	124.5
12	Williams, Alia	16	10	0.63	6	36	.111	1	0.06	1	2	0.06	0	6	0.38	2	9	11	0.69	2	0	17.5
13	Froehlich, AC	4	0	0.00	0	0	.000	0	0.00	1	1	0.25	0	4	1.00	0	0	0	0.00	0	0	1.0
16	Echter, Ellie	1	1	1.00	0	2	.500	0	0.00	0	0	0.00	0	0	0.00	0	0	0	0.00	0	0	1.0
22	Waak, Maddie	49	25	0.51	8	61	.279	477	9.73	16	19	0.33	0	118	2.41	1	11	12	0.24	4	4	47.5
23	Demps, Jade	49	118	2.41	41	341	.226	17	0.35	9	14	0.18	6	113	2.31	1	20	21	0.43	2	1	138.0
29	Mitter, Emily	4	0	0.00	0	1	.000	14	3.50	1	1	0.25	0	3	0.75	0	0	0	0.00	0	0	1.0
LSU		49	628	12.82	234	1611	.245	588	12.00	72	127	1.47	51	648	13.22	20	138	89	1.82	31	7	789.0
Opponents		49	594	12.12	232	1548	.234	545	11.12	51	118	1.04	72	625	12.76	20	152	96	1.96	22	19	741.0

Team statistics

	LSU	OPP
ATTACK		
Kills	628	594
Errors	234	232
Total Attacks	1611	1548
Attack Pct	.245	.234
Kills/Set	12.82	12.12
SET		
Assists	588	545
Attempts	1604	1564
Assist Pct	.367	.348
Assists/Set	12.00	11.12
SERVE		
Aces	72	51
Errors	127	118
Attempts	1079	1030
Serve Pct	.882	.885
Aces/Set	1.47	1.04
SERVE RECEPTIONS		
Errors	51	72
Errors/Set	1.04	1.47
Attempts	912	952
Reception Pct	.944	.998
DEFENSE		
Digs	648	625
Digs/Set	13.22	12.76
BLOCKING		
Block solo	20	20
Block Assist	138	152
Total Blocks	89	96
Blocks/Set	1.82	1.96
Block Errors	31	22
Ball handling errors	7	19
ATTENDANCE		
Total	7880	6971
Dates/Avg Per Date	6/1313	3/2324
Neutral Site #/Avg	4/1162	-
Current win streak	0	-
Home win streak	0	-

Team Results

Date	Opponent	Score	Score-by-set	Att.
08/25/2023	UCLA	W 3-2	25-20,25-18,20-25,21-25,15-10	1232
08/26/2023	UCLA	L 2-3	25-12,22-25,25-20,22-25,6-15	1648
09/01/2023	vs UNI	L 0-3	23-25,26-28,17-25	2001
09/02/2023	at Creighton	L 0-3	12-25,21-25,30-32	2094
09/03/2023	vs Ball St.	W 3-1	19-25,25-14,25-13,25-23	1995
09/06/2023	Louisiana	W 3-1	25-17,20-25,25-12,25-12	1794
09/10/2023	Southeastern La.	L 1-3	22-25,21-25,25-20,17-25	1237
09/15/2023	vs A&M-Corpus Christi	W 3-0	25-13,25-10,25-21	0
09/16/2023	vs Texas Tech	W 3-0	25-19,25-16,25-17	650
09/17/2023	at SMU	L 0-3	19-25,20-25,17-25	1344
* 09/22/2023	at Kentucky	L 1-3	25-23,22-25,18-25,13-25	3533
* 09/29/2023	Missouri	W 3-1	20-25,25-14,25-22,25-19	934
* 10/01/2023	Mississippi St.	W 3-1	19-25,25-22,25-20,25-20	1035

2023 COMBINED SEC STATS

Overall	Conference	Home	Away	Neutral
2 - 1	2 - 1	2 - 0	0 - 1	0 - 0

Team Box Score

##	Player	SP	Attack					Set		Serve			RE	Dig			Blocking					PTS
			K	K/S	E	TA	PCT	A	A/S	SA	SE	SA/S		DIG	DIG/S	BS	BA	TOT/S	BLK/S	BE	BHE	
1	Hill, Samarah	8	14	1.75	9	48	.104	1	0.13	0	2	0.00	1	17	2.13	0	2	2	0.25	0	0	15.0
2	Flickinger, Paige	12	1	0.08	2	9	-.111	1	0.08	1	3	0.08	2	24	2.00	0	0	0	0.00	0	0	2.0
4	Lee, Angie	12	14	1.17	6	38	.211	0	0.00	0	0	0.00	0	4	0.33	2	10	12	1.00	1	0	21.0
5	Robinson, Jurnee	10	34	3.40	24	101	.099	0	0.00	2	6	0.20	3	16	1.60	2	6	8	0.80	0	1	41.0
7	Anderson, Bri	12	1	0.08	0	2	.500	9	0.75	3	10	0.25	2	42	3.50	0	0	0	0.00	0	0	4.0
8	Hemmings, Ella	8	0	0.00	0	0	.000	1	0.13	2	0	0.25	0	6	0.75	0	0	0	0.00	0	0	2.0
9	Dotson, Sanaa	11	24	2.18	3	59	.356	0	0.00	0	0	0.00	2	4	0.36	0	6	6	0.55	1	0	27.0
10	Carmichael, Erin	8	0	0.00	0	0	.000	1	0.13	3	6	0.38	0	3	0.38	0	0	0	0.00	0	0	3.0
11	Anwusi, Anita	12	23	1.92	13	48	.208	0	0.00	0	0	0.00	0	0	0.00	0	11	11	0.92	2	0	28.5
22	Waak, Maddie	12	8	0.67	1	16	.438	113	9.42	3	6	0.25	0	27	2.25	0	3	3	0.25	2	0	12.5
23	Demps, Jade	12	21	1.75	7	73	.192	5	0.42	1	2	0.08	1	23	1.92	0	4	4	0.33	1	0	24.0
LSU		12	140	11.67	65	394	.190	131	10.92	15	35	1.25	13	166	13.83	4	42	25	2.08	7	1	180.0
Opponents		12	148	12.33	61	395	.220	133	11.08	13	39	1.08	15	156	13.00	8	40	28	2.33	6	10	189.0

Team statistics

	LSU	OPP
ATTACK		
Kills	140	148
Errors	65	61
Total Attacks	394	395
Attack Pct	.190	.220
Kills/Set	11.67	12.33
SET		
Assists	131	133
Attempts	398	397
Assist Pct	.329	.335
Assists/Set	10.92	11.08
SERVE		
Aces	15	13
Errors	35	39
Attempts	266	266
Serve Pct	.868	.853
Aces/Set	1.25	1.08
SERVE RECEPTIONS		
Errors	13	15
Errors/Set	1.08	1.25
Attempts	227	231
Reception Pct	.943	.995
DEFENSE		
Digs	166	156
Digs/Set	13.83	13.00
BLOCKING		
Block solo	4	8
Block Assist	42	40
Total Blocks	25	28
Blocks/Set	2.08	2.33
Block Errors	7	6
Ball handling errors	1	10
ATTENDANCE		
Total	1969	3533
Dates/Avg Per Date	2/985	1/3533
Neutral Site #/Avg	0/0	-
Current win streak	0	-
Home win streak	0	-

Team Results

	Date	Opponent		Score	Score-by-set	Att.
*	09/22/2023	at Kentucky	L	1-3	25-23,22-25,18-25,13-25	3533
*	09/29/2023	Missouri	W	3-1	20-25,25-14,25-22,25-19	934
*	10/01/2023	Mississippi St.	W	3-1	19-25,25-22,25-20,25-20	1035

2023 TEAM COMPARISON

Date	Opponent	Score	Kills	Errors	TA	Hit%	Assists	SA	SE	RE	Digs	Blocks	BS	BA	BE	BHE
08/25/2023	UCLA	3-2	66/53	22/20	140/120	.314/.275	63/51	8/8	13/11	8/8	45/43	12.0/11.0	5/2	14/18	0/1	0/1
08/26/2023	UCLA	2-3	56/55	27/14	148/141	.196/.291	53/49	12/6	6/15	6/12	64/52	7.0/10.0	2/2	10/16	1/3	3/1
09/01/2023	UNI	0-3	45/56	10/13	115/116	.304/.371	42/48	1/5	6/3	5/1	41/54	6.0/5.0	1/2	10/6	7/1	0/2
09/02/2023	Creighton	0-3	36/57	16/14	117/113	.171/.381	34/53	6/2	7/7	2/6	35/52	6.0/7.0	1/1	10/12	3/1	0/0
09/03/2023	Ball St.	3-1	52/36	19/20	124/111	.266/.144	49/33	15/5	14/7	5/15	51/43	9.0/12.0	2/4	14/16	3/5	1/0
09/06/2023	Louisiana	3-1	56/33	21/25	129/121	.271/.066	54/31	5/4	8/6	4/5	59/45	6.0/5.0	3/0	6/10	2/2	0/1
09/10/2023	Southeastern La.	1-3	62/58	20/13	155/140	.271/.321	57/56	2/1	13/6	1/2	61/64	7.0/9.0	0/0	14/18	3/0	0/2
09/15/2023	A&M-Corpus Christi	3-0	33/25	8/22	78/83	.321/.036	28/24	5/1	9/9	1/5	28/34	4.0/1.0	1/0	6/2	3/0	0/2
09/16/2023	Texas Tech	3-0	46/29	10/19	111/107	.324/.093	44/29	2/1	10/7	1/2	56/41	4.0/3.0	0/0	8/6	2/1	0/0
09/17/2023	SMU	0-3	36/44	16/11	100/101	.200/.327	33/38	1/5	6/8	5/1	42/41	3.0/5.0	1/1	4/8	0/2	2/0
09/22/2023	Kentucky	1-3	40/64	22/20	133/131	.135/.336	35/56	2/4	7/16	4/2	42/51	11.0/8.0	2/1	18/14	2/2	0/0
09/29/2023	Missouri	3-1	43/43	17/25	125/133	.208/.135	39/40	7/5	14/14	5/7	59/57	12.0/8.0	2/4	20/8	3/3	0/6
10/01/2023	Mississippi St.	3-1	57/41	26/16	136/131	.228/.191	57/37	6/4	14/9	4/6	65/48	2.0/12.0	0/3	4/18	2/1	1/4

Note: Match totals are displayed in the format TEAM/OPPONENT for each category

2023 TEAM MATCH-BY-MATCH

			Attack				Set			Serve				Recept					Blocking						
Date	Opponent	SP	K	E	TA	PCT	A	TA	PCT	SA	SE	TA	PCT	RE	TA	PCT	DIG	BS	BA	BE	TOTAL	BHE	POINTS	SCORE	
08/25/2023	UCLA	5	66	22	140	.314	63	138	.457	8	13	105	.876	8	88	.909	45	5	14	0	12.0	0	86.0	3-2	
08/26/2023	UCLA	5	56	27	148	.196	53	142	.373	12	6	100	.940	6	82	.927	64	2	10	1	7.0	3	75.0	2-3	
09/01/2023	vs UNI	3	45	10	115	.304	42	117	.359	1	6	67	.910	5	74	.932	41	1	10	7	6.0	0	52.0	0-3	
09/02/2023	at Creighton	3	36	16	117	.171	34	117	.291	6	7	65	.892	2	73	.973	35	1	10	3	6.0	0	48.0	0-3	
09/03/2023	vs Ball St.	4	52	19	124	.266	49	119	.412	15	14	93	.849	5	69	.928	51	2	14	3	9.0	1	76.0	3-1	
09/06/2023	Louisiana	4	56	21	129	.271	54	129	.419	5	8	94	.915	4	61	.934	59	3	6	2	6.0	0	67.0	3-1	
09/10/2023	Southeastern La.	4	62	20	155	.271	57	160	.356	2	13	86	.849	1	88	.989	61	0	14	3	7.0	0	71.0	1-3	
09/15/2023	vs A&M-Corpus Christi	3	33	8	78	.321	28	74	.378	5	9	73	.877	1	37	.973	28	1	6	3	4.0	0	42.0	3-0	
09/16/2023	vs Texas Tech	3	46	10	111	.324	44	107	.411	2	10	73	.863	1	47	.979	56	0	8	2	4.0	0	52.0	3-0	
09/17/2023	at SMU	3	36	16	100	.200	33	103	.320	1	6	57	.895	5	66	.924	42	1	4	0	3.0	2	40.0	0-3	
09/22/2023	at Kentucky	4	40	22	133	.135	35	129	.271	2	7	79	.911	4	81	.951	42	2	18	2	11.0	0	53.0	1-3	
09/29/2023	Missouri	4	43	17	125	.208	39	127	.307	7	14	94	.851	5	67	.925	59	2	20	3	12.0	0	62.0	3-1	
10/01/2023	Mississippi St.	4	57	26	136	.228	57	142	.401	6	14	93	.849	4	79	.949	65	0	4	2	2.0	1	65.0	3-1	
Totals		49	628	234	1611	.245	588	1604	.367	72	127	1079	.882	51	912	.944	648	20	138	31	89.0	7	789.0		
Opponents		49	594	232	1548	.234	545	1564	.348	51	118	1030	.885	72	952	.924	625	20	152	22	96.0	19	741.0		

Team Averages

Sets Played	Kills per set	Assists per set	Service aces per set	Digs per set	Blocks per set	Points per set	Ball handling error per set	Reception errors per set
49	12.82	12.00	1.47	13.22	1.82	16.10	0.14	1.04

2023 OPPONENT MATCH-BY-MATCH

			Attack				Set			Serve				Recept				Blocking						
Date	Opponent	SP	K	E	TA	PCT	A	TA	PCT	SA	SE	TA	PCT	RE	TA	PCT	DIG	BS	BA	BE	TOTAL	BHE	POINTS	SCORE
08/25/2023	UCLA	5	53	20	120	.275	51	131	.389	8	11	99	.889	8	92	.913	43	2	18	1	11.0	1	72.0	3-2
08/26/2023	UCLA	5	55	14	141	.291	49	135	.363	6	15	97	.845	12	94	.872	52	2	16	3	10.0	1	71.0	2-3
09/01/2023	vsUNI	3	56	13	116	.371	48	113	.425	5	3	77	.961	1	61	.984	54	2	6	1	5.0	2	66.0	0-3
09/02/2023	at Creighton	3	57	14	113	.381	53	109	.486	2	7	80	.913	6	58	.897	52	1	12	1	7.0	0	66.0	0-3
09/03/2023	vsBall St.	4	36	20	111	.144	33	112	.295	5	7	76	.908	15	79	.810	43	4	16	5	12.0	0	53.0	3-1
09/06/2023	Louisiana	4	33	25	121	.066	31	139	.223	4	6	67	.910	5	86	.942	45	0	10	2	5.0	1	42.0	3-1
09/10/2023	Southeastern La.	4	58	13	140	.321	56	146	.384	1	6	94	.936	2	73	.973	64	0	18	0	9.0	2	68.0	1-3
09/15/2023	vsA&M-Corpus Christi	3	25	22	83	.036	24	90	.267	1	9	46	.804	5	64	.922	34	0	2	0	1.0	2	27.0	3-0
09/16/2023	vsTexas Tech	3	29	19	107	.093	29	100	.290	1	7	54	.870	2	63	.968	41	0	6	1	3.0	0	33.0	3-0
09/17/2023	at SMU	3	44	11	101	.327	38	92	.413	5	8	74	.892	1	51	.980	41	1	8	2	5.0	0	54.0	0-3
09/22/2023	at Kentucky	4	64	20	131	.336	56	123	.455	4	16	97	.835	2	72	.972	51	1	14	2	8.0	0	76.0	1-3
09/29/2023	Missouri	4	43	25	133	.135	40	140	.286	5	14	81	.827	7	80	.913	57	4	8	3	8.0	6	56.0	3-1
10/01/2023	Mississippi St.	4	41	16	131	.191	37	134	.276	4	9	88	.898	6	79	.924	48	3	18	1	12.0	4	57.0	3-1
Opponent totals		49	594	232	1548	.234	545	1564	.348	51	118	1030	.885	72	952	.924	625	20	152	22	96.0	19	741.0	
LSU totals		49	628	234	1611	.245	588	1604	.367	72	127	1079	.882	51	912	.944	648	20	138	31	89.0	7	789.0	

Team Averages

Sets Played	Kills per set	Assists per set	Service aces per set	Digs per set	Blocks per set	Points per set	Ball handling error per set	Reception errors per set
49	12.12	11.12	1.04	12.76	1.96	15.12	0.39	1.47

2023 CATEGORY LEADERS

Attack (by PCT)

#	Player	S	K	K/S	E	TA	PCT
16	Echter, Ellie	1	1	1.00	0	2	.500
11	Anwusi, Anita	49	105	2.14	29	204	.373
7	Anderson, Bri	34	1	0.03	0	3	.333
22	Waak, Maddie	49	25	0.51	8	61	.279
5	Robinson, Jurnee	47	193	4.11	74	440	.270
4	Lee, Angie	33	43	1.30	17	108	.241
23	Demps, Jade	49	118	2.41	41	341	.226
9	Dotson, Sanaa	43	95	2.21	37	279	.208
1	Hill, Samarah	13	20	1.54	11	65	.138
12	Williams, Alia	16	10	0.63	6	36	.111
2	Flickinger, Paige	35	17	0.49	11	70	.086
10	Carmichael, Erin	43	0	0.00	0	1	.000
29	Mitter, Emily	4	0	0.00	0	1	.000
6	Martin, Madison	1	0	0.00	0	0	.000
8	Hemmings, Ella	39	0	0.00	0	0	.000
13	Froehlich, AC	4	0	0.00	0	0	.000

Kill (by K)

#	Player	S	K	K/S
5	Robinson, Jurnee	47	193	4.11
23	Demps, Jade	49	118	2.41
11	Anwusi, Anita	49	105	2.14
9	Dotson, Sanaa	43	95	2.21
4	Lee, Angie	33	43	1.30
22	Waak, Maddie	49	25	0.51
1	Hill, Samarah	13	20	1.54
2	Flickinger, Paige	35	17	0.49
12	Williams, Alia	16	10	0.63
16	Echter, Ellie	1	1	1.00
7	Anderson, Bri	34	1	0.03
10	Carmichael, Erin	43	0	0.00
29	Mitter, Emily	4	0	0.00
6	Martin, Madison	1	0	0.00
8	Hemmings, Ella	39	0	0.00
13	Froehlich, AC	4	0	0.00

Set (by A/S)

#	Player	S	A	A/S	TA	PCT
22	Waak, Maddie	49	477	9.73	1219	.387
29	Mitter, Emily	4	14	3.50	48	.292
10	Carmichael, Erin	43	45	1.05	122	.361
7	Anderson, Bri	34	13	0.38	50	.240
23	Demps, Jade	49	17	0.35	41	.415
8	Hemmings, Ella	39	7	0.18	33	.152
1	Hill, Samarah	13	2	0.15	10	.200
2	Flickinger, Paige	35	4	0.11	11	.364
9	Dotson, Sanaa	43	4	0.09	25	.080
12	Williams, Alia	16	1	0.06	2	.500
5	Robinson, Jurnee	47	2	0.04	27	.074
11	Anwusi, Anita	49	2	0.04	12	.167
4	Lee, Angie	33	0	0.00	4	-.250
16	Echter, Ellie	1	0	0.00	0	.000
6	Martin, Madison	1	0	0.00	0	.000
13	Froehlich, AC	4	0	0.00	0	.000

Serve (by SA/S)

#	Player	S	SA	SE	SA/S	TA	PCT
22	Waak, Maddie	49	16	19	0.33	211	.910
10	Carmichael, Erin	43	14	24	0.33	173	.861
8	Hemmings, Ella	39	10	6	0.26	132	.955
29	Mitter, Emily	4	1	1	0.25	12	.917
13	Froehlich, AC	4	1	1	0.25	12	.917
23	Demps, Jade	49	9	14	0.18	142	.901
5	Robinson, Jurnee	47	7	26	0.15	131	.802
2	Flickinger, Paige	35	5	7	0.14	106	.934
9	Dotson, Sanaa	43	5	9	0.12	64	.859
7	Anderson, Bri	34	3	15	0.09	70	.786
12	Williams, Alia	16	1	2	0.06	7	.714
1	Hill, Samarah	13	0	2	0.00	16	.875
11	Anwusi, Anita	49	0	1	0.00	2	.500
4	Lee, Angie	33	0	0	0.00	0	.000
16	Echter, Ellie	1	0	0	0.00	1	1.000
6	Martin, Madison	1	0	0	0.00	0	.000

2023 CATEGORY LEADERS

Block (by BLK/S)

#	Player	S	BS	BA	TOTAL	BLK/S
4	Lee, Angie	33	4	27	31.0	0.94
11	Anwusi, Anita	49	3	33	36.0	0.73
12	Williams, Alia	16	2	9	11.0	0.69
5	Robinson, Jurnee	47	6	21	27.0	0.57
23	Demps, Jade	49	1	20	21.0	0.43
9	Dotson, Sanaa	43	1	13	14.0	0.33
1	Hill, Samarah	13	0	4	4.0	0.31
22	Waak, Maddie	49	1	11	12.0	0.24
2	Flickinger, Paige	35	2	0	2.0	0.06
10	Carmichael, Erin	43	0	0	0.0	0.00
8	Hemmings, Ella	39	0	0	0.0	0.00
29	Mitter, Emily	4	0	0	0.0	0.00
13	Froehlich, AC	4	0	0	0.0	0.00
7	Anderson, Bri	34	0	0	0.0	0.00
16	Echter, Ellie	1	0	0	0.0	0.00
6	Martin, Madison	1	0	0	0.0	0.00

Defense (by DIG/S)

#	Player	S	DIG	DIG/S	BHE
22	Waak, Maddie	49	118	2.41	4
10	Carmichael, Erin	43	101	2.35	0
7	Anderson, Bri	34	79	2.32	0
23	Demps, Jade	49	113	2.31	1
2	Flickinger, Paige	35	69	1.97	0
1	Hill, Samarah	13	22	1.69	0
5	Robinson, Jurnee	47	61	1.30	2
13	Froehlich, AC	4	4	1.00	0
9	Dotson, Sanaa	43	34	0.79	0
29	Mitter, Emily	4	3	0.75	0
8	Hemmings, Ella	39	18	0.46	0
12	Williams, Alia	16	6	0.38	0
4	Lee, Angie	33	9	0.27	0
11	Anwusi, Anita	49	11	0.22	0
16	Echter, Ellie	1	0	0.00	0
6	Martin, Madison	1	0	0.00	0

Points (by POINTS/S)

#	Player	S	POINTS	POINTS/S
5	Robinson, Jurnee	47	216.5	4.61
23	Demps, Jade	49	138.0	2.82
11	Anwusi, Anita	49	124.5	2.54
9	Dotson, Sanaa	43	107.5	2.50
4	Lee, Angie	33	60.5	1.83
1	Hill, Samarah	13	22.0	1.69
12	Williams, Alia	16	17.5	1.09
16	Echter, Ellie	1	1.0	1.00
22	Waak, Maddie	49	47.5	0.97
2	Flickinger, Paige	35	24.0	0.69
10	Carmichael, Erin	43	14.0	0.33
8	Hemmings, Ella	39	10.0	0.26
13	Froehlich, AC	4	1.0	0.25
29	Mitter, Emily	4	1.0	0.25
7	Anderson, Bri	34	4.0	0.12
6	Martin, Madison	1	0.0	0.00

Receptions (by PCT)

#	Player	S	RE	RE/S	TA	PCT
11	Anwusi, Anita	49	0	0.00	4	1.000
4	Lee, Angie	33	0	0.00	1	1.000
16	Echter, Ellie	1	0	0.00	1	1.000
22	Waak, Maddie	49	0	0.00	2	1.000
29	Mitter, Emily	4	0	0.00	1	1.000
2	Flickinger, Paige	35	5	0.14	147	.966
7	Anderson, Bri	34	4	0.12	117	.966
10	Carmichael, Erin	43	7	0.16	202	.965
1	Hill, Samarah	13	1	0.08	27	.963
23	Demps, Jade	49	6	0.12	148	.959
9	Dotson, Sanaa	43	7	0.16	107	.935
5	Robinson, Jurnee	47	11	0.23	145	.924
12	Williams, Alia	16	0	0.00	0	.000
8	Hemmings, Ella	39	0	0.00	0	.000
13	Froehlich, AC	4	0	0.00	0	.000
6	Martin, Madison	1	0	0.00	0	.000
TM	TEAM	-	10	0.20	-	-

INDIVIDUAL CAREER DOUBLE-DOUBLES

ERIN CARMICHAEL [2]

11/13/22 10 assists, 15 digs at Austin Peay*
9/6/23 10 assists, 10 digs vs. UL-Lafayette

JADE DEMPS [5]

11/19/21 12 kills, 14 digs vs. Michigan State*
 11/21/21 18 kills, 16 digs at Minnesota*
8/25/23 14 kills, 10 digs vs. UCLA
9/6/23 15 kills, 10 digs vs. UL-Lafayette
10/1/23 11 kills, 12 digs vs. Mississippi St.

SANAA DOTSON [11]

3/26/21 13 kills, 12 digs vs. TCU*
 3/27/21 26 kills, 12 digs vs. TCU*
 8/26/22 15 kills, 11 digs vs. Samford
 9/3/22 13 kills, 15 digs vs. No. 21 Penn St.
 9/21/22 20 kills, 12 digs vs. No. 20 Arkansas
 10/1/22 16 kills, 13 digs vs. Ole Miss
 10/5/22 22 kills, 13 digs vs. Auburn
 10/8/22 15 kills, 10 digs at No. 15 Florida
 10/19/22 18 kills, 14 digs at Alabama
 10/30/22 18 kills, 12 digs vs. Mississippi St.
 12/2/22 16 kills, 18 digs vs. Hawai'i

PAIGE FLICKINGER [17]

10/22/20 11 kills, 12 digs vs. Mississippi St.
 11/15/20 10 kills, 16 digs at Alabama
 1/29/21 11 kills, 23 digs at Missouri
 1/30/21 14 kills, 12 digs at Missouri
 2/28/21 11 kills, 13 digs vs. Ole Miss
 3/13/21 10 kills, 15 digs vs. South Carolina
 3/20/21 14 kills, 21 digs vs. Georgia
 9/21/22 15 kills, 17 digs vs. No. 20 Arkansas
 9/24/22 14 kills, 14 digs at No. 15 Kentucky
 10/5/22 11 kills, 11 digs vs. Auburn
 10/9/22 15 kills, 12 digs at No. 15 Florida
 10/19/22 16 kills, 13 digs at Alabama
 10/29/22 17 kills, 14 digs vs. Mississippi St.
 11/12/22 16 kills, 19 digs at Missouri
 11/16/22 13 kills, 10 digs at Texas A&M
 11/26/22 11 kills, 10 digs vs. Georgia
 12/2/22 11 kills, 10 digs vs. Hawai'i

SAMARAH HILL [7]

8/31/19 11 kills, 16 digs vs. Arizona St.
 9/8/19 18 kills, 11 digs at Iowa St.
 11/3/19 17 kills, 15 digs vs. Mississippi St.
 11/6/19 12 kills, 14 digs vs. Auburn
 10/18/20 12 kills, 14 digs at Texas A&M
 10/21/20 10 kills, 12 digs vs. Mississippi St.
 10/22/20 11 kills, 12 digs vs. Mississippi St.

EMILY MITTER [29]

9/7/19 27 assists, 16 digs at N.C. Central*
 9/13/19 18 assists, 12 digs vs. North Dakota*
 9/14/19 12 assists, 10 digs vs. The Citadel*
 9/20/19 15 assists, 10 digs vs. UMBC*
 9/21/19 20 assists, 11 digs vs. Oakland*
 10/26/19 10 assists, 14 digs vs. Hampton*
 11/15/19 23 assists, 11 digs at UNC Asheville*
 2/28/21 18 assists, 15 digs at Winthrop*
 3/11/21 17 assists, 11 digs at Gardner-Webb*
 4/2/21 16 assists, 10 digs vs. Radford*
 9/10/21 26 assists, 11 digs vs. Florida A&M*
 9/11/21 28 assists, 13 digs vs. Davidson*
 9/17/21 27 assists, 14 digs vs. UNC Greensboro*
 9/25/21 14 assists, 10 digs at Presbyterian*
 10/8/21 25 assists, 12 digs at High Point*
 10/9/21 18 assists, 15 digs at N.C. A&T*
 10/12/21 14 assists, 12 digs vs. Winthrop*
 10/19/21 24 assists, 11 digs at Hampton*
 10/29/21 26 assists, 16 digs vs. N.C. A&T*
 11/5/21 25 assists, 11 digs at USC Upstate*
 11/21/21 23 assists, 13 digs at High Point*
 9/30/22 24 assists, 15 digs vs. Presbyterian*
 10/6/22 16 assists, 10 digs at Radford*
 10/8/22 25 assists, 15 digs vs. High Point*
 10/20/22 27 assists, 10 digs vs. Charleston Southern*
 10/21/22 32 assists, 11 digs vs. Gardner-Webb*
 11/3/22 23 assists, 13 digs at High Point*
 11/5/22 36 assists, 14 digs vs. Radford*
 11/20/22 16 assists, 14 digs vs. High Point*

JURNEE ROBINSON [1]

8/26/23 23 kills, 10 digs vs. UCLA

MADDIE WAAK [7]

10/19/22 39 assists, 10 digs at Alabama
 10/29/22 21 assists, 12 digs vs. Mississippi St.
 10/30/22 21 assists, 17 digs vs. Mississippi St.
8/25/23 51 assists, 11 digs vs. UCLA
9/6/23 42 assists, 20 digs vs. UL-Lafayette
9/17/23 25 assists, 14 digs at SMU
9/29/23 32 assists, 17 digs vs. Missouri

Bold indicates double-doubles this season

* Carmichael's double-double at Jacksonville State

* Demps' double-doubles at Wisconsin

* Dotson's double-doubles at Oklahoma

* Mitter's double-doubles at Campbell

TIGER FINDINGS: PLAYER FACTS

BRI ANDERSON SERVING SONG: Big 7 - Burna Boy

Aspires to be a dentist...is an avid reader...if she could, she would love to meet Ida B. Wells or Henritetta Lacks...favorite type of animals are wolves...father Neal Anderson played college football at Florida and professional football with the Chicago Bears.

ANITA ANWUSI SERVING SONG: Did It On Em - Nicki Minaj

Desires an occupation as a pediatric physical therapist...the top item on her bucket list is to meet Nicki Minaj...her favorite type of animals are dolphins and koala bears...one interesting fact about her is that she can crochet...was selected to the 2023 Women's Collegiate National Team.

MACKENZIE BOYER SERVING SONG: Life Goes On - Lil Baby

Wants a career in media marketing...Would love to live in Europe...desired to be on TV...would have loved to meet Amelia Earhart who is the first woman to fly solo across the Atlantic Ocean...before playing volleyball, Boyer was a swimmer...father, Brad Boyer played basketball at Air Force.

ERIN CARMICHAEL SERVING SONG: Doses and Mimosas - Cherub

Wants to work as a medical sales representative...would have liked to meet Kobe Bryant...has a twin sister named Elise who played volleyball at Tusculum University as a setter...two-time Ohio Valley Conference Champion at Jacksonville State.

JADE DEMPS SERVING SONG: Pump It - Black Eyed Peas

Wants to be a veterinarian...attended Broughton High School in North Carolina, the same high school as Pete Maravich...surprisingly on her bucket list, she wants to steal the Declaration of Independence (inspired by movie National Treasure?)...wants to meet the comedy duo Rhett and Link...the Golden Tiger is her favorite animal...was a member of Wisconsin's 2021 National Championship team...mother Keisha Demps and father Thomas Demps III played volleyball and football at Arizona.

SANAA DOTSON SERVING SONG: Southside - Lil Keke

Aspires to be a sports public relations representative or sports analyst...secretly, she wants to be an actress...bucket list items include learning how to ski, learning how to do a backflip, and meeting Drake...transferred from Oklahoma for the 2021 season...father Santana Dotson played 11 years as a defensive tackle in the NFL and won Super Bowl XXXI with the Green Bay Packers.

ELLIE ECHTER SERVING SONG: Run This Town - Jay-Z

Wants to explore the business world and live anywhere in Texas...desires to visit the Wonders of the World and travel to the Alafi Coast...if she could, she would meet Elvis Presley...use to play in a trash can band in 4th and 5th grade.

PAIGE FLICKINGER SERVING SONG: Superhero - Metro Boomin

Aspires to work as a cyber security analyst...as a person fascinated by the tech world, would have loved to speak to Steve Jobs first hand and hear his journey on creating Apple.

AC FROELICH SERVING SONG: The Show Goes On - Lupe Fiasco

Another aspiring veterinarian...would like to meet Taylor Swift...is the only Louisiana native on the team...was a member of St. Thomas Moore High School 2022 State Championship team.

ELLA HEMMINGS SERVING SONG: Superhero - Metro Boomin

Wants to live in New Zealand or Greece...would love to meet Rihanna...favorite type of animal is an elephant...does not like many fruit aside from grapes and apples.

SAMARAH HILL SERVING SONG: No Flockin - Kodak Black

Desires to work in HR for a corporate company...wants to meet Australian actor Jacob Elordi...use to be a competitive cheerleader...returned to the floor in 2022 after suffering two injuries that kept her out of the lineup since 2020...both parents, Sarah and Isaac Hill, ran track at Arkansas State.

ANGIE LEE SERVING SONG: Pardon Me - Lil Yachty, Future

Wants to be a software engineer or software developer at a space station...her favorite snack is brownie brittle...wants to learn how to swim but don't ask her to jump off the diving board, she has a fear of heights...helped lead Farmersville High School in Texas to a 2022 Area Championship title.

MADISON MARTIN SERVING SONG: Til I Collapse - Eminem

Aspires to become a doctor specializing in oncology or dermatology...currently celebrating her mother's eight-year cancer free anniversary...she use to travel the country and compete in synchronized swimming...is also a spanish minor.

EMILY MITTER SERVING SONG: Drowning - A Boogie Wit Da Hoodie

Wants a career as a marine conservationist...would love to meet freediver and model Ocean Ramsey...top item on her bucket list is to freedive with sharks which is her favorite type of fish or elasmobranch...father Todd Mitter played and coached baseball at Illinois.

ALEXIS ROBERSON SERVING SONG: Bottoms Up - Trey Songz

Pursing a career as a market research analyst...has spent a full year in Louisiana and still has eating an oyster on her bucket list...desires to stay awake for a full 24 hours...wants to meet Michele Obama...has a sock collection.

JURNEE ROBINSON SERVING SONG: Fish Scale - NBA Youngboy

Wants to own her own business surrounding athletic wear...loves to be around toddlers...favorite type of animals are dolphins...wants to meet Beyonce...led Mauldin High School to a 2022 South Carolina state title and tabbed the 2022 Best Player in South Carolina by MaxPrep...father, Jonathan Robinson played football at Presbyterian College.

MIKA ROME SERVING SONG: Dance The Night - Dua Lipa

Has an interest in engineering new medicine...from Israel and played for the Israeli National Team...has also served in the Israeli Defense Forces...favorite type of animal is a Tiger...her brother Segev is the Israeli Junior Champion in squash.

MADDIE WAAK SERVING SONG: Shoota - Playboi Carti

Wants to be a political analysts...would have liked to meet Franklin D. Roosevelt...desires to visit Spain...father Nick Waak played baseball at Lassen JC and Centenary College; drafted by the Cleveland Indians in 1997...mother played softball at Centenary College.

ALIA WILLIAMS SERVING SONG: It Was A Good Day - Ice Cube

Wants to be a marketing manager...would like to meet Serena Williams...has a hairless cat...father Fred Williams played basketball at Louisiana College.

BRI ZAMORA SERVING SONG: It Was A Good Day - Ice Cube

Wants to be an orthopedic surgeon or biomedical engineer...would like to meet John Wooden and Valerie Kondos Field...had a three-month figure skating career...wants to see the northern lights and climb a mountain.



MACKENZIE BOYER

0

Middle Blocker · 6-3 · Freshman · HS · Austin, Texas (Vandegrift HS)

SEASON HIGHS

Kills	NA
Attacks	NA
Hit % (Min. 10 att)	NA
Assists	NA
Aces	NA
Digs	NA
Total Blocks	NA
Block Solos	NA
Block Assists	NA

CAREER HIGHS

Kills	NA
Attacks	NA
Hit % (Min. 10 att)	NA
Assists	NA
Aces	NA
Digs	NA
Total Blocks	NA
Block Solos	NA
Block Assists	NA

[Complete bio](#)

Freshman Season (2023)

- Ranked No. 29 in the state of Texas in 2021 with 132 total blocks.
- Helped Vandegrift win its district in 2021 with a 39-10 record and placed 5th in the State Tournament.

2023 SEASON MATCH-BY-MATCH

BOYER'S CAREER STATS



SAMARAH HILL

1

Outside Hitter • 6-1 • Graduate • 3L • Oviedo, Fla. (Trinity Prep School)

SEASON HIGHS

Kills	9 vs. Mississippi St. (10/1/23)
Attacks	12 at No. 22 Kentucky (09/22/23)
Hit % (Min. 10 att)	.250 at No. 22 Kentucky (09/22/23)
Assists	1 vs. Mississippi St. (10/1/23) vs. UCLA (08/26/23)
Aces	NA
Digs	9 vs. Mississippi St. (10/1/23)
Total Blocks	1, Four Times
Block Solos	NA
Block Assists	1, Four Times

CAREER HIGHS

Kills	20 vs. Texas A&M (11/10/19)
Attacks	56 at Iowa St. (09/08/19)
Assists	4 at Milwaukee (09/09/22)
Hit % (Min. 10 att)	.524 vs. Ole Miss (09/30/22)
Aces	5 vs. Alabama (10/18/19)
Digs	18 vs. Florida (10/20/19)
Total Blocks	5 at Alabama (11/24/19)
Block Solos	3 at Alabama (11/24/19)
Block Assists	4, Four times

Complete bio

Graduate Season (2023)

- Had season-highs of nine kills and nine digs vs. Mississippi St. (Oct. 1).
- Returned to the floor in 2022 after suffering a shoulder injury (2020) and achilles injury (2021).
- Averaged 2.16 points per set last season behind 119 kills, 20 blocks and four aces.
- Was a 2019 SEC All-Freshman Team Selection.

2023 SEASON MATCH-BY-MATCH

		Attack				Set			Serve				Recept			Blocking				Team					
Date	Opponent	SP	K	E	TA	PCT	A	TA	PCT	SA	SE	TA	PCT	RE	TA	PCT	DIG	BS	BA	BE	TOTAL	BHE	POINTS	HIT%	SCORE
08/26/2023	UCLA	1	0	0	2	.000	1	2	.500	0	0	1	1.000	0	6	1.000	2	0	0	0	0.0	0	0.0	.196	2-3
09/02/2023	at Creighton	2	3	1	9	.222	0	1	.000	0	0	0	.000	0	0	.000	1	0	1	1	1.0	0	3.5	.171	0-3
09/03/2023	vs Ball St.	1	1	1	4	.000	0	0	.000	0	0	0	.000	0	0	.000	0	0	0	0	0.0	0	1.0	.266	3-1
09/10/2023	Southeastern La.	1	2	0	2	1.000	0	0	.000	0	0	1	1.000	0	3	1.000	2	0	1	0	1.0	0	2.5	.271	1-3
09/22/2023	at Kentucky	3	4	1	12	.250	0	2	.000	0	0	3	1.000	1	11	.909	3	0	0	0	0.0	0	4.0	.135	1-3
09/29/2023	Missouri	2	1	0	5	.200	0	3	.000	0	0	4	1.000	0	2	1.000	5	0	1	0	1.0	0	1.5	.208	3-1
10/01/2023	Mississippi St.	3	9	8	31	.032	1	2	.500	0	2	7	.714	0	5	1.000	9	0	1	0	1.0	0	9.5	.228	3-1
Totals		13	20	11	65	.138	2	10	.200	0	2	16	.875	1	27	.963	22	0	4	1	4.0	0	22.0		

Player Averages

Sets Played	Kills per set	Assists per set	Service aces per set	Digs per set	Blocks per set	Points per set
13	1.54	0.15	0.00	1.69	0.31	1.69

HILL'S CAREER STATS

SEASON	TEAM	SM-MP	K	K/S	E	TA	PCT	A	A/S	SA	SA/S	SE	DIG	D/S	RE	BS	BA	TB	B/S	BE	BHE	PTS	PTS/S
2019-20	LSU	101-28	262	2.59	92	804	.211	15	0.15	15	0.15	28	243	2.41	26	12	31	43	0.43	6	0	304.5	3.01
2020-21	LSU	16-4	41	2.56	19	125	.176	1	0.06	7	0.44	4	45	2.81	3	1	7	8	0.50	0	0	52.5	3.28
2022-23	LSU	62-22	119	1.92	49	370	.189	6	0.10	4	0.06	5	68	1.10	13	2	18	20	0.32	4	0	134.0	2.16
2023-24	LSU	13-7	20	1.54	11	65	.138	2	0.15	0	0.00	2	22	1.69	1	0	4	4	0.31	1	0	22.0	1.69
TOTAL		192 - 61	442	2.30	171	1364	.199	24	0.13	26	0.14	39	378	1.97	43	15	60	75	0.39	11	0	513.0	2.67



PAIGE FLICKINGER

2

Outside Hitter • 5-9 • Senior • 3L • Roanoke, Texas (Byron Nelson HS)

SEASON HIGHS

Kills	8 vs. Ball State (09/03/23)
Attacks	22 vs. Ball State (09/03/23)
Hit % (Min. 10 att)	.227 vs. Ball State (09/03/23)
Assists	3 vs. Texas Tech (09/16/23)
Aces	2 vs. Ball State (09/03/23)
Digs	13 vs. Mississippi St. (10/1/23) vs. Ball State (09/03/23)
Total Blocks	1 vs. Ball State (09/03/23) at No. 20 Creighton (09/02/23)
Block Solos	1 vs. Ball State (09/03/23) at No. 20 Creighton (09/02/23)
Block Assists	NA

CAREER HIGHS

Kills	20 vs. Ole Miss (02/27/21)
Attacks	57 at Aabama (10/19/22)
Hit % (Min. 10 att)	.524 vs. Troy (09/02/22)
Assists	3, Three Times
Aces	5 at Auburn (10/29/21)
Digs	23 at Missouri (01/29/21)
Total Blocks	4 at Alabama (10/19/22)
Block Solos	2 at No. 15 Kentucky (09/24/22) at No. 17 Missouri (01/29/21)
Block Assists	4 at Alabama (10/19/22)

Complete bio

Senior Season (2023)

- Matched a season-best 13 digs vs. Mississippi St. (Oct. 1).
- Made first start of 2023 vs. Ball State (Sept. 3) and recorded eight kills, a team-high 13 digs, and two aces.
- Was second on the team in 2022 with 252 kills (2.65/set).
- Added 25 blocks and 21 aces last season.
- Was a 2020-21 All-SEC Freshman Team selection.

2023 SEASON MATCH-BY-MATCH

		Attack					Set			Serve			Recept			Blocking				Team					
Date	Opponent	SP	K	E	TA	PCT	A	TA	PCT	SA	SE	TA	PCT	RE	TA	PCT	DIG	BS	BA	BE	TOTAL	BHE	POINTS	HIT%	SCORE
09/02/2023	at Creighton	2	2	2	12	.000	0	1	.000	0	1	5	.800	0	2	1.000	1	1	0	0	1.0	0	3.0	.171	0-3
09/03/2023	vs Ball St.	*4	8	3	22	.227	0	0	.000	2	1	13	.923	1	14	.929	13	1	0	0	1.0	0	11.0	.266	3-1
09/06/2023	Louisiana	*4	4	3	18	.056	0	1	.000	1	1	13	.923	0	7	1.000	6	0	0	1	0.0	0	5.0	.271	3-1
09/10/2023	Southeastern La.	*4	1	0	6	.167	0	1	.000	0	1	12	.917	1	29	.966	10	0	0	0	0.0	0	1.0	.271	1-3
09/15/2023	vs A&M-Corpus Christi	*3	0	0	0	.000	0	0	.000	1	0	10	1.000	0	9	1.000	4	0	0	0	0.0	0	1.0	.321	3-0
09/16/2023	vs Texas Tech	*3	1	1	3	.000	3	4	.750	0	0	9	1.000	0	9	1.000	7	0	0	0	0.0	0	1.0	.324	3-0
09/17/2023	at SMU	3	0	0	0	.000	0	0	.000	0	0	8	1.000	1	14	.929	4	0	0	0	0.0	0	0.0	.200	0-3
09/22/2023	at Kentucky	*4	1	1	6	.000	0	0	.000	0	1	6	.833	0	13	1.000	4	0	0	0	0.0	0	1.0	.135	1-3
09/29/2023	Missouri	*4	0	0	2	.000	1	3	.333	1	1	18	.944	1	23	.957	7	0	0	0	0.0	0	1.0	.208	3-1
10/01/2023	Mississippi St.	*4	0	1	1	-1.000	0	1	.000	0	1	12	.917	1	27	.963	13	0	0	0	0.0	0	0.0	.228	3-1
Totals		35	17	11	70	.086	4	11	.364	5	7	106	.934	5	147	.966	69	2	0	1	2.0	0	24.0		

Player Averages

Sets Played	Kills per set	Assists per set	Service aces per set	Digs per set	Blocks per set	Points per set
35	0.49	0.11	0.14	1.97	0.06	0.69

FLICKINGER'S CAREER STATS

SEASON	TEAM	SM-MP	K	K/S	E	TA	PCT	A	A/S	SA	SA/S	SE	DIG	D/S	RE	BS	BA	TB	B/S	BE	BHE	PTS	PTS/S
2020-21	LSU	86-22	195	2.27	88	605	.177	22	0.26	20	0.23	22	240	2.79	23	4	18	22	0.26	1	0	228.0	2.65
2021-22	LSU	54-14	33	0.61	8	97	.258	4	0.07	15	0.28	16	77	1.43	7	0	2	2	0.04	1	0	49.0	0.91
2022-23	LSU	95-26	252	2.65	116	827	.164	21	0.22	20	0.21	27	242	2.55	18	4	21	25	0.26	2	0	286.5	3.02
2023-24	LSU	35-10	17	0.49	11	70	.086	4	0.11	5	0.14	7	69	1.97	5	2	0	2	0.06	1	0	24.0	0.69
TOTAL		270 - 72	497	1.84	223	1599	.171	51	0.19	60	0.22	72	628	2.33	53	10	41	51	0.19	5	0	587.5	2.18



ANGIE LEE

4

Middle Blocker • 6-2 • Freshman • HS • Long Island, N.Y. (Farmersville HS)

SEASON HIGHS

Kills	8 vs. Missouri (09/29/23)
Attacks	15 vs. Missouri (09/29/23)
Hit % (Min. 10 att)	.385 vs. A&M-Corpus Christi (09/15/23)
Assists	NA
Aces	NA
Digs	2, Three Times
Total Blocks	6 at No. 22 Kentucky (09/22/23) vs. Ball State (09/03/23)
Block Solos	1, Four Times
Block Assists	6 vs. Ball State (09/03/23)

CAREER HIGHS

Kills	8 vs. Missouri (09/29/23)
Attacks	15 vs. Missouri (09/29/23)
Hit % (Min. 10 att)	.385 vs. A&M-Corpus Christi (09/15/23)
Assists	NA
Aces	NA
Digs	2, Three Times
Total Blocks	6 at No. 22 Kentucky (09/22/23) vs. Ball State (09/03/23)
Block Solos	1, Four Times
Block Assists	6 vs. Ball State (09/03/23)

Complete bio

Freshman Season (2023)

- Leads the team with 0.94 blocks per set and 31 total blocks since entering the lineup on Sept. 6.
- Logged a season-high eight kills vs. Mississippi St. (Oct. 1) and hit .714 at SMU on Sept. 17 (5-0-7).
- Registered four kills and a team-high six blocks in her collegiate debut vs. Ball State (Sept. 3).
- Led Farmersville High School to a 2022 Area Championship title.
- Was the 2021-22 District MVP and 2020-21 Defensive Player of the Year.
- Set a program record in high school with a .433 hitting percentage.

2023 SEASON MATCH-BY-MATCH

		Attack				Set		Serve				Recept				Blocking				Team					
Date	Opponent	SP	K	E	TA	PCT	A	TA	PCT	SA	SE	TA	PCT	RE	TA	PCT	DIG	BS	BA	BE	TOTAL	BHE	POINTS	HIT%	SCORE
09/03/2023	vs Ball St.	*4	4	5	15	.067	0	0	.000	0	0	0	.000	0	0	.000	2	0	6	0	6.0	0	7.0	.266	3-1
09/06/2023	Louisiana	*4	5	1	9	.444	0	0	.000	0	0	0	.000	0	0	.000	1	1	3	0	4.0	0	7.5	.271	3-1
09/10/2023	Southeastern La.	*4	3	2	14	.071	0	0	.000	0	0	0	.000	0	0	.000	0	0	5	1	5.0	0	5.5	.271	1-3
09/15/2023	vs A&M-Corpus Christi	*3	7	2	13	.385	0	3	.000	0	0	0	.000	0	0	.000	1	0	1	0	1.0	0	7.5	.321	3-0
09/16/2023	vs Texas Tech	*3	5	1	12	.333	0	0	.000	0	0	0	.000	0	0	.000	1	0	2	1	2.0	0	6.0	.324	3-0
09/17/2023	at SMU	*3	5	0	7	.714	0	1	.000	0	0	0	.000	0	1	1.000	0	1	0	0	1.0	0	6.0	.200	0-3
09/22/2023	at Kentucky	*4	3	2	12	.083	0	0	.000	0	0	0	.000	0	0	.000	2	1	5	0	6.0	0	6.5	.135	1-3
09/29/2023	Missouri	*4	8	2	16	.375	0	0	.000	0	0	0	.000	0	0	.000	2	1	4	1	5.0	0	11.0	.208	3-1
10/01/2023	Mississippi St.	*4	3	2	10	.100	0	0	.000	0	0	0	.000	0	0	.000	0	0	1	0	1.0	0	3.5	.228	3-1
Totals		33	43	17	108	.241	0	4	.000	0	0	0	.000	0	1	1.000	9	4	27	3	31.0	0	60.5		

Player Averages

Sets Played	Kills per set	Assists per set	Service aces per set	Digs per set	Blocks per set	Points per set
33	1.30	0.00	0.00	0.27	0.94	1.83

LEE'S CAREER STATS

SEASON	TEAM	SM-MP	K	K/S	E	TA	PCT	A	A/S	SA	SA/S	SE	DIG	D/S	RE	BS	BA	TB	B/S	BE	BHE	PTS	PTS/S
2023-24	LSU	33-9	43	1.30	17	108	.241	0	0.00	0	0.00	0	9	0.27	0	4	27	31	0.94	3	0	60.5	1.83
TOTAL		33 - 9	43	1.30	17	108	.241	0	0.00	0	0.00	0	9	0.27	0	4	27	31	0.94	3	0	60.5	1.83



JURNEE ROBINSON

5

Outside Hitter • 6-1 • Freshman • HS • Simpsonville, S.C. (Mauldin HS)

SEASON HIGHS

Kills	23 vs. UCLA (08/26/23) vs. UCLA (08/25/23)
Attacks	47, Three Times
Hit % (Min. 10 att)	.552 vs. Texas Tech (09/16/23)
Assists	1 vs. Texas Tech (09/16/23) vs. UCLA (08/26/23)
Aces	2 vs. Missouri (09/29/23) vs. Ball State (09/03/23)
Digs	10 vs. UCLA (08/26/23)
Total Blocks	5 at No. 22 Kentucky (09/22/23)
Block Solos	1, Six Times
Block Assists	4 at No. 22 Kentucky (09/22/23)

CAREER HIGHS

Kills	23 vs. UCLA (08/26/23) vs. UCLA (08/25/23)
Attacks	47, Three Times
Hit % (Min. 10 att)	.552 vs. Texas Tech (09/16/23)
Assists	1 vs. Texas Tech (09/16/23) vs. UCLA (08/26/23)
Aces	2 vs. Missouri (09/29/23) vs. Ball State (09/03/23)
Digs	10 vs. UCLA (08/26/23)
Total Blocks	5 at No. 22 Kentucky (09/22/23)
Block Solos	1, Six Times
Block Assists	4 at No. 22 Kentucky (09/22/23)

Complete bio

Freshman Season (2023)

- Ranks No. 2 in the SEC with 4.11 kills per set and No. 6 with 4.61 points per set.
- Hit a season-high .552 behind 18 kills vs. Texas Tech (Sept. 16).
- Tabbed SEC Freshman of the Week (Aug. 28) after opening weekend.
- Logged consectuive 23-kill performances in her first two collegiate matches. Has three 20-plus kill matches.
- Turned in first career double-double with 23 kills and 10 digs vs. UCLA (Aug. 26).
- Named to the USA Volleyball NDTP roster.
- Was named the 2022 Best Player in South Carolina by MaxPrep.

2023 SEASON MATCH-BY-MATCH

Date	Opponent	SP	Attack				Set			Serve				Recept			Blocking				Team				
			K	E	TA	PCT	A	TA	PCT	SA	SE	TA	PCT	RE	TA	PCT	DIG	BS	BA	BE	TOTAL	BHE	POINTS	HIT% SCORE	
08/25/2023	UCLA	*5	23	6	47	.362	0	4	.000	1	2	13	.846	1	17	.941	6	1	2	0	3.0	0	26.0	.314 3-2	
08/26/2023	UCLA	*5	23	10	47	.277	1	5	.200	0	2	11	.818	1	26	.962	10	0	2	0	2.0	1	24.0	.196 2-3	
09/01/2023	vs UNI	*3	14	6	38	.211	0	2	.000	0	1	7	.857	1	14	.929	7	0	1	1	1.0	0	14.5	.304 0-3	
09/02/2023	at Creighton	*3	12	4	33	.242	0	2	.000	0	1	7	.857	0	19	1.000	6	0	3	1	3.0	0	13.5	.171 0-3	
09/03/2023	vs Ball St.	*4	17	6	37	.297	0	1	.000	2	5	10	.500	3	10	.700	3	1	3	1	4.0	0	21.5	.266 3-1	
09/06/2023	Louisiana	*4	11	4	20	.350	0	2	.000	1	1	14	.929	0	2	1.000	1	1	0	1	1.0	0	13.0	.271 3-1	
09/10/2023	Southeastern La.	*4	22	5	47	.362	0	3	.000	1	3	20	.850	0	1	1.000	4	0	1	1	1.0	0	23.5	.271 1-3	
09/15/2023	vs A&M-Corpus Christi	*3	8	2	17	.353	0	0	.000	0	0	0	.000	1	4	.750	1	1	1	2	2.0	0	9.5	.321 3-0	
09/16/2023	vs Texas Tech	*3	18	2	29	.552	1	2	.500	0	3	8	.625	0	2	1.000	5	0	2	0	2.0	0	19.0	.324 3-0	
09/17/2023	at SMU	3	11	5	24	.250	0	1	.000	0	2	9	.778	1	2	.500	2	0	0	0	0.0	0	11.0	.200 0-3	
09/22/2023	at Kentucky	*4	13	9	44	.091	0	1	.000	0	1	12	.917	1	23	.957	7	1	4	0	5.0	0	16.0	.135 1-3	
09/29/2023	Missouri	*4	12	6	32	.188	0	2	.000	2	3	15	.800	1	18	.944	5	1	2	0	3.0	0	16.0	.208 3-1	
10/01/2023	Mississippi St.	*2	9	9	25	.000	0	2	.000	0	2	5	.600	1	7	.857	4	0	0	0	0.0	1	9.0	.228 3-1	
Totals			47	193	74	440	.270	2	27	.074	7	26	131	.802	11	145	.924	61	6	21	7	27.0	2	216.5	

Player Averages

Sets Played	Kills per set	Assists per set	Service aces per set	Digs per set	Blocks per set	Points per set
47	4.11	0.04	0.15	1.30	0.57	4.61

ROBINSON'S CAREER STATS

SEASON	TEAM	SM-MP	K	K/S	E	TA	PCT	A	A/S	SA	SA/S	SE	DIG	D/S	RE	BS	BA	TB	B/S	BE	BHE	PTS	PTS/S
2023-24	LSU	47-13	193	4.11	74	440	.270	2	0.04	7	0.15	26	61	1.30	11	6	21	27	0.57	7	2	216.5	4.61
TOTAL		47 - 13	193	4.11	74	440	.270	2	0.04	7	0.15	26	61	1.30	11	6	21	27	0.57	7	2	216.5	4.61



MADISON MARTIN

6

Defensive Specialist/Libero • 5-8 • Junior • 2L • Ormond Beach, Fla. (Mt. Carmel Academy)

SEASON HIGHS

Kills	NA
Attacks	NA
Hit % (Min. 10 att)	NA
Assists	NA
Aces	NA
Digs	NA
Total Blocks	NA
Block Solos	NA
Block Assists	NA

CAREER HIGHS

Kills	NA
Attacks	NA
Assists	1 at Ole Miss (11/12/21)
Hit % (Min. 10 att)	NA
Aces	3 vs. Sam Houston (09/11/21)
Digs	3 at Texas A&M (11/16/22)
Total Blocks	NA
Block Solos	NA
Block Assists	NA

Complete bio

Junior Season (2023)

- Logged three aces in a single match against Sam Houston State in 2021.
- Was named to the 2022 SEC Fall Academic Honor Roll.

2023 SEASON MATCH-BY-MATCH

			Attack				Set			Serve				Recept			Blocking				Team				
Date	Opponent	SP	K	E	TA	PCT	A	TA	PCT	SA	SE	TA	PCT	RE	TA	PCT	DIG	BS	BA	BE	TOTAL	BHE	POINTS	HIT%	SCORE
08/25/2023	UCLA	1	0	0	0	.000	0	0	.000	0	0	0	.000	0	0	.000	0	0	0	0	0.0	0	0.0	.314	3-2
Totals		1	0	0	0	.000	0	0	.000	0	0	0	.000	0	0	.000	0	0	0	0	0.0	0	0.0		

Player Averages

Sets Played	Kills per set	Assists per set	Service aces per set	Digs per set	Blocks per set	Points per set
1	0.00	0.00	0.00	0.00	0.00	0.00

MARTIN'S CAREER STATS

SEASON	TEAM	SM-MP	K	K/S	E	TA	PCT	A	A/S	SA	SA/S	SE	DIG	D/S	RE	BS	BA	TB	B/S	BE	BHE	PTS	PTS/S
2021-22	LSU	31-12	0	0.00	0	0	.000	1	0.03	3	0.10	2	7	0.23	0	0	0	0	0.00	0	0	3.0	0.10
2022-23	LSU	15-5	0	0.00	0	0	.000	0	0.00	1	0.07	1	6	0.40	0	0	0	0	0.00	0	0	1.0	0.07
2023-24	LSU	1-1	0	0.00	0	0	.000	0	0.00	0	0.00	0	0	0.00	0	0	0	0	0.00	0	0	0.0	0.00
TOTAL		47 - 18	0	0.00	0	0	.000	1	0.02	4	0.09	3	13	0.28	0	0	0	0	0.00	0	0	4.0	0.09



BRI ANDERSON

7

Defensive Specialist/Libero • 5-9 • Sophomore • 1L • Gainesville, Fla. (Buchholz HS)

SEASON HIGHS

Kills	1 vs. Missouri (09/29/23)
Attacks	2 vs. Missouri (09/29/23)
Hit % (Min. 10 att)	NA
Assists	5 vs. Missouri (09/29/23)
Aces	3 vs. Mississippi St. (10/1/23)
Digs	16 at No. 22 Kentucky (09/22/23)
Total Blocks	NA
Block Solos	NA
Block Assists	NA

CAREER HIGHS

Kills	1 vs. Missouri (09/29/23)
Attacks	2 vs. Missouri (09/29/23)
Hit % (Min. 10 att)	NA
Assists	5 vs. Missouri (09/29/23)
Aces	3 vs. Mississippi St. (10/1/23)
Digs	16 at No. 22 Kentucky (09/22/23)
Total Blocks	NA
Block Solos	NA
Block Assists	NA

Complete bio

Sophomore Season (2023)

- Served a career-high three aces vs. Mississippi St. on Oct. 1.
- Registered a career-high 16 digs at No. 22 Kentucky on Sept. 22.
- Totaled two aces in her collegiate debut against Samford in 2022.
- Was the 2019 Gainesville Large School Player of the Year.
- Father, Neal Anderson played college football at Florida and in the NFL for the Chicago Bears.

2023 SEASON MATCH-BY-MATCH

Date	Opponent	SP	Attack				Set			Serve			Recept			Blocking				Team					
			K	E	TA	PCT	A	TA	PCT	SA	SE	TA	PCT	RE	TA	PCT	DIG	BS	BA	BE	TOTAL	BHE	POINTS	HIT%	SCORE
09/01/2023	vs UNI	2	0	0	0	.000	0	1	.000	0	1	7	.857	2	17	.882	7	0	0	0	0.0	0	0.0	.304	0-3
09/03/2023	vs Ball St.	3	0	0	0	.000	0	1	.000	0	0	0	.000	0	8	1.000	6	0	0	0	0.0	0	0.0	.266	3-1
09/06/2023	Louisiana	4	0	0	0	.000	1	2	.500	0	0	0	.000	0	13	1.000	6	0	0	0	0.0	0	0.0	.271	3-1
09/10/2023	Southeastern La	4	0	0	0	.000	1	7	.143	0	0	0	.000	0	10	1.000	6	0	0	0	0.0	0	0.0	.271	1-3
09/15/2023	vs A&M-Corpus Christi	3	0	0	1	.000	1	1	1.000	0	2	8	.750	0	6	1.000	1	0	0	0	0.0	0	0.0	.321	3-0
09/16/2023	vs Texas Tech	3	0	0	0	.000	0	2	.000	0	2	2	.000	0	7	1.000	4	0	0	0	0.0	0	0.0	.324	3-0
09/17/2023	at SMU	*3	0	0	0	.000	1	3	.333	0	0	1	1.000	0	7	1.000	7	0	0	0	0.0	0	0.0	.200	0-3
09/22/2023	at Kentucky	4	0	0	0	.000	0	10	.000	0	4	20	.800	1	19	.947	16	0	0	0	0.0	0	0.0	.135	1-3
09/29/2023	Missouri	4	1	0	2	.500	5	13	.385	0	3	12	.750	0	9	1.000	12	0	0	0	0.0	0	1.0	.208	3-1
10/01/2023	Mississippi St.	4	0	0	0	.000	4	10	.400	3	3	20	.850	1	21	.952	14	0	0	0	0.0	0	3.0	.228	3-1
Totals		34	1	0	3	.333	13	50	.260	3	15	70	.786	4	117	.966	79	0	0	0	0.0	0	4.0		

Player Averages

Sets Played	Kills per set	Assists per set	Service aces per set	Digs per set	Blocks per set	Points per set
34	0.03	0.38	0.09	2.32	0.00	0.12

ANDERSON'S CAREER STATS

SEASON	TEAM	SM-MP	K	K/S	E	TA	PCT	A	A/S	SA	SA/S	SE	DIG	D/S	RE	BS	BA	TB	B/S	BE	BHE	PTS	PTS/S
2022-23	LSU	12-6	0	0.00	0	0	.000	1	0.08	4	0.33	6	2	0.17	0	0	0	0	0.00	0	0	4.0	0.33
2023-24	LSU	34-10	1	0.03	0	3	.333	13	0.38	3	0.09	15	79	2.32	4	0	0	0	0.00	0	0	4.0	0.12
TOTAL		46 - 16	1	0.02	0	3	.333	14	0.30	7	0.15	21	81	1.76	4	0	0	0	0.00	0	0	8.0	0.17



ELLA HEMMINGS

8

Defensive Specialist/Libero • 5-6 • Freshman • HS • Brownsburg, Ind. (Brownsburg HS)

SEASON HIGHS

Kills	NA
Attacks	NA
Hit % (Min. 10 att)	NA
Assists	2 vs. UCLA (08/25/23)
Aces	2 at No. 22 Kentucky (09/22/23) vs. UCLA (08/26/23)
Digs	3 vs. Missouri (09/29/23)
Total Blocks	NA
Block Solos	NA
Block Assists	NA

CAREER HIGHS

Kills	NA
Attacks	NA
Hit % (Min. 10 att)	NA
Assists	2 vs. UCLA (08/25/23)
Aces	2 at No. 22 Kentucky (09/22/23) vs. UCLA (08/26/23)
Digs	3 vs. Missouri (09/29/23)
Total Blocks	NA
Block Solos	NA
Block Assists	NA

Complete bio

Freshman Season (2023)

- Has 10 aces in 2023, including four matches with multiple aces.
- A four-year letterwinner for Brownsburg High School.
- Named Best Libero by Prep Volleyball.
- Totaled 1,943 career digs in high school and averaged 4.60 digs per set.

2023 SEASON MATCH-BY-MATCH

		Attack				Set			Serve				Recept			Blocking				Team				
Date	Opponent	SP	K	E	TA	PCT	A	TA	PCT	SA	SE	TA	PCT	RE	TA	PCT	DIG	BS	BA	BE	TOTAL	BHE	POINTS	HIT% SCORE
08/25/2023	UCLA	5	0	0	0	.000	2	5	.400	1	1	18	.944	0	0	.000	2	0	0	0	0.0	0	1.0	.314 3-2
08/26/2023	UCLA	5	0	0	0	.000	0	3	.000	2	0	14	1.000	0	0	.000	1	0	0	0	0.0	0	2.0	.196 2-3
09/01/2023	vs UNI	3	0	0	0	.000	1	4	.250	1	0	17	1.000	0	0	.000	1	0	0	0	0.0	0	1.0	.304 0-3
09/02/2023	at Creighton	2	0	0	0	.000	1	1	1.000	0	0	5	1.000	0	0	.000	1	0	0	0	0.0	0	0.0	.171 0-3
09/03/2023	vs Ball St.	3	0	0	0	.000	1	7	.143	1	1	14	.929	0	0	.000	2	0	0	0	0.0	0	1.0	.266 3-1
09/06/2023	Louisiana	4	0	0	0	.000	1	2	.500	1	0	11	1.000	0	0	.000	2	0	0	0	0.0	0	1.0	.271 3-1
09/15/2023	vs A&M-Corpus Christi	3	0	0	0	.000	0	3	.000	1	1	8	.875	0	0	.000	1	0	0	0	0.0	0	1.0	.321 3-0
09/16/2023	vs Texas Tech	3	0	0	0	.000	0	2	.000	0	2	14	.857	0	0	.000	2	0	0	0	0.0	0	0.0	.324 3-0
09/17/2023	at SMU	3	0	0	0	.000	0	3	.000	1	1	12	.917	0	0	.000	0	0	0	0	0.0	0	1.0	.200 0-3
09/22/2023	at Kentucky	4	0	0	0	.000	1	1	1.000	2	0	11	1.000	0	0	.000	1	0	0	0	0.0	0	2.0	.135 1-3
09/29/2023	Missouri	3	0	0	0	.000	0	2	.000	0	0	6	1.000	0	0	.000	3	0	0	0	0.0	0	0.0	.208 3-1
10/01/2023	Mississippi St.	1	0	0	0	.000	0	0	.000	0	0	2	1.000	0	0	.000	2	0	0	0	0.0	0	0.0	.228 3-1
Totals		39	0	0	0	.000	7	33	.212	10	6	132	.955	0	0	.000	18	0	0	0	0.0	0	10.0	

Player Averages

Sets Played	Kills per set	Assists per set	Service aces per set	Digs per set	Blocks per set	Points per set
39	0.00	0.18	0.26	0.46	0.00	0.26

HEMMINGS' CAREER STATS

SEASON	TEAM	SM-MP	K	K/S	E	TA	PCT	A	A/S	SA	SA/S	SE	DIG	D/S	RE	BS	BA	TB	B/S	BE	BHE	PTS	PTS/S
2023-24	LSU	39-12	0	0.00	0	0	.000	7	0.18	10	0.26	6	18	0.46	0	0	0	0	0.00	0	0	10.0	0.26
TOTAL		39 - 12	0	0.00	0	0	.000	7	0.18	10	0.26	6	18	0.46	0	0	0	0	0.00	0	0	10.0	0.26



SANAA DOTSON

9

Outside Hitter • 6-0 • Graduate • 2L • Houston, Texas (Oklahoma)

SEASON HIGHS

Kills	14 vs. Mississippi St. (10/1/23)
Attacks	33 vs. UCLA (08/26/23)
Hit % (Min. 10 att)	.591 vs. Mississippi St. (10/1/23)
Assists	2 vs. UCLA (08/26/23)
Aces	2 vs. UCLA (08/26/23) vs. UCLA (08/25/23)
Digs	9 vs. UCLA (08/26/23)
Total Blocks	4 vs. Missouri (09/29/23)
Block Solos	1 vs. UCLA (08/25/23)
Block Assists	2, Three Times

CAREER HIGHS

Kills	26 vs. TCU (03/27/21)*
Attacks	66 vs. Mississippi St. (10/29/22) No. 20 Arkansas (09/21/22)
Assists	2, Three Times
Hit % (Min. 10 att)	.591 vs. Mississippi St. (10/1/23)
Aces	3, Four Times
Digs	18 vs. Hawai'i (12/2/22)
Total Blocks	7 vs. Troy (09/02/22)
Block Solos	1, 11 Times
Block Assists	7 vs. Troy (09/02/22)

* Played at Oklahoma

Complete bio

Graduate Season (2023)

- Logged her 1,000th career kill vs. Missouri on Sept. 29, and hit a career-high .591 vs. Mississippi St. on Oct. 1.
- Honored to the 2022 AVCA South All-Region team.
- Concluded 2022 season ranked No. 8 in the SEC with 3.66 kills per set and led the team with 25 aces.
- Had five 20-plus kill performances this season.
- Had nine double-double in 2022, including 16 kills and a career-high 18 digs in the NCAA Tournament win vs. Hawai'i (Dec. 2, 2023).
- Graduated in spring 2023 with a bachelor's degree in mass communications.

2023 SEASON MATCH-BY-MATCH

Date	Opponent	SP	Attack				Set		Serve				Recept			Blocking				Team					
			K	E	TA	PCT	A	TA	PCT	SA	SE	TA	PCT	RE	TA	PCT	DIG	BS	BA	BE	TOTAL	BHE	POINTS	HIT%	SCORE
08/25/2023	UCLA	*5	12	5	29	.241	1	6	.167	2	4	20	.800	2	16	.875	6	1	1	0	2.0	0	15.5	.314	3-2
08/26/2023	UCLA	*5	12	7	33	.152	2	3	.667	2	2	21	.905	0	18	1.000	9	0	0	0	0.0	0	14.0	.196	2-3
09/01/2023	vs UNI	*3	10	1	27	.333	1	4	.250	0	2	12	.833	1	20	.950	3	0	0	0	0.0	0	10.0	.304	0-3
09/02/2023	at Creighton	*3	3	4	16	-.063	0	1	.000	1	1	6	.833	1	11	.909	3	0	0	0	0.0	0	4.0	.171	0-3
09/06/2023	Louisiana	3	11	6	26	.192	0	4	.000	0	0	0	.000	0	4	1.000	0	0	0	0	0.0	0	11.0	.271	3-1
09/10/2023	Southeastern La.	4	9	4	28	.179	0	4	.000	0	0	3	1.000	0	12	1.000	3	0	2	0	2.0	0	10.0	.271	1-3
09/15/2023	vs A&M-Corpus Christi	3	2	1	12	.083	0	1	.000	0	0	2	1.000	0	5	1.000	1	0	1	0	1.0	0	2.5	.321	3-0
09/16/2023	vs Texas Tech	3	6	2	23	.174	0	0	.000	0	0	0	.000	0	5	1.000	2	0	1	0	1.0	0	6.5	.324	3-0
09/17/2023	at SMU	*3	6	4	26	.077	0	0	.000	0	0	0	.000	1	6	.833	3	0	2	0	2.0	0	7.0	.200	0-3
09/22/2023	at Kentucky	3	4	1	10	.300	0	0	.000	0	0	0	.000	0	1	1.000	1	0	2	0	2.0	0	5.0	.135	1-3
09/29/2023	Missouri	4	6	1	27	.185	0	2	.000	0	0	0	.000	1	4	.750	1	0	4	1	4.0	0	8.0	.208	3-1
10/01/2023	Mississippi St.	4	14	1	22	.591	0	0	.000	0	0	0	.000	1	5	.800	2	0	0	0	0.0	0	14.0	.228	3-1
Totals		43	95	37	279	.208	4	25	.160	5	9	64	.859	7	107	.935	34	1	13	1	14.0	0	107.5		

Player Averages

Sets Played	Kills per set	Assists per set	Service aces per set	Digs per set	Blocks per set	Points per set
43	2.21	0.09	0.12	0.79	0.33	2.50

DOTSON'S CAREER STATS

SEASON	TEAM	SM-MP	K	K/S	E	TA	PCT	A	A/S	SA	SA/S	SE	DIG	D/S	RE	BS	BA	TB	B/S	BE	BHE	PTS	PTS/S
2019-20	OU	50-17	92	1.84	41	305	.167	1	0.02	1	0.02	5	23	0.46	1	2	17	19	0.38	2	0	103.5	2.07
2020-21	OU	64-18	215	3.36	96	560	.213	2	0.03	6	0.09	35	81	1.27	22	1	26	27	0.42	1	0	235.0	3.67
2021-22	LSU	78-24	181	2.32	70	503	.221	1	0.01	1	0.01	1	24	0.31	13	2	18	20	0.26	1	0	193.0	2.47
2022-23	LSU	119-30	436	3.66	169	1297	.206	14	0.12	25	0.21	65	268	2.25	26	5	44	49	0.41	7	0	488.0	4.10
2023-24	LSU	43-12	95	2.21	37	279	.208	4	0.09	5	0.12	9	34	0.79	7	1	13	14	0.33	1	0	107.5	2.50
TOTAL FOR LSU		240 - 66	712	2.97	276	2079	.210	19	0.08	31	0.13	75	326	1.36	46	8	75	83	0.35	9	0	788.5	3.29
TOTAL		354 - 101	1019	2.88	413	2944	.206	22	0.06	38	0.11	115	430	1.21	69	11	118	129	0.36	12	0	1127	3.18



ERIN CARMICHAEL10

Defensive Specialist/Libero • 5-7 • Graduate • TR • Avon, Ind. (Jacksonville State)

SEASON HIGHS

Kills	NA
Attacks	1 vs. UCLA (08/25/23)
Hit % (Min. 10 att)	NA
Assists	10 vs. UL-Lafayette (09/06/23)
Aces	5 vs. Ball State (09/03/23)
Digs	18 vs. UCLA (08/26/23)
Total Blocks	NA
Block Solos	NA
Block Assists	NA

CAREER HIGHS

Kills	2 vs. North Alabama (09/07/19)*
Attacks	4 at SIUE (02/15/21)*
Hit % (Min. 10 att)	NA
Assists	10 vs. UL-Lafayette (09/06/23) at Austin Peay (11/13/22)*
Aces	5 vs. Ball State (09/03/23)
Digs	28 at Morehead St. (03/28/21)
Total Blocks	NA
Block Solos	NA
Block Assists	NA

* Played at Jacksonville State.

Complete bio

Graduate Season (2023)

- Ranks in the top 30 among NCAA Division I volleyball active career leaders with 1,573 career digs.
- Has 2.35 digs per set and 101 total digs with 14 aces.
- Set a new single-match career-high five aces vs. Ball State (Sept. 3).
- Turned in her second career double-double with 10 assists and 10 digs vs. UL-Lafayette (Sept. 6).
- Two-time Ohio Valley Conference Champion at Jacksonville state, including program's first OVC championship in a decade 2019.
- Totaled 1,472 career digs (3.88/set) at Jackson State, becoming JSU's 13th 1,000-dig performer.

2023 SEASON MATCH-BY-MATCH

Date	Opponent	Attack				Set			Serve			Receipt			Blocking				Team						
		SP	K	E	TA	PCT	A	TA	PCT	SA	SE	TA	PCT	RE	TA	PCT	DIG	BS	BA	BE	TOTAL	BHE	POINTS	HIT%	SCORE
08/25/2023	UCLA	5	0	0	1	.000	6	18	.333	1	2	15	.867	2	41	.951	9	0	0	0	0.0	0	1.0	.314	3-2
08/26/2023	UCLA	5	0	0	0	.000	6	13	.462	3	2	16	.875	1	14	.929	18	0	0	0	0.0	0	3.0	.196	2-3
09/01/2023	vs UNI	1	0	0	0	.000	0	3	.000	0	2	3	.333	0	8	1.000	2	0	0	0	0.0	0	0.0	.304	0-3
09/02/2023	at Creighton	3	0	0	0	.000	6	13	.462	0	1	12	.917	0	38	1.000	9	0	0	0	0.0	0	0.0	.171	0-3
09/03/2023	vs Ball St.	4	0	0	0	.000	2	4	.500	5	3	16	.813	1	21	.952	9	0	0	0	0.0	0	5.0	.266	3-1
09/06/2023	Louisiana	4	0	0	0	.000	10	22	.455	1	3	24	.875	3	24	.875	10	0	0	0	0.0	0	1.0	.271	3-1
09/10/2023	Southeastern La.	4	0	0	0	.000	5	13	.385	0	2	13	.846	0	18	1.000	15	0	0	0	0.0	0	0.0	.271	1-3
09/15/2023	vs A&M-Corpus Christi	3	0	0	0	.000	0	8	.000	1	2	14	.857	0	7	1.000	5	0	0	0	0.0	0	1.0	.321	3-0
09/16/2023	vs Texas Tech	3	0	0	0	.000	4	12	.333	0	1	16	.938	0	14	1.000	16	0	0	0	0.0	0	0.0	.324	3-0
09/17/2023	at SMU	3	0	0	0	.000	5	12	.417	0	0	7	1.000	0	17	1.000	5	0	0	0	0.0	0	0.0	.200	0-3
09/29/2023	Missouri	4	0	0	0	.000	0	1	.000	1	3	15	.800	0	0	.000	0	0	0	0	0.0	0	1.0	.208	3-1
10/01/2023	Mississippi St.	4	0	0	0	.000	1	3	.333	2	3	22	.864	0	0	.000	3	0	0	0	0.0	0	2.0	.228	3-1
Totals		43	0	0	1	.000	45	122	.369	14	24	173	.861	7	202	.965	101	0	0	0	0.0	0	14.0		

Player Averages

Sets Played	Kills per set	Assists per set	Service aces per set	Digs per set	Blocks per set	Points per set
43	0.00	1.05	0.33	2.35	0.00	0.33

CARMICHAEL'S CAREER STATS

SEASON	TEAM	SM-MP	K	K/S	E	TA	PCT	A	A/S	SA	SA/S	SE	DIG	D/S	RE	BS	BA	TB	B/S	BE	BHE	PTS	PTS/S
2019-20	JSU	106-30	2	0.02	1	7	.143	93	0.88	26	0.25	41	404	3.81	24	0	0	0	0.00	0	0	28.0	0.26
2020-21	JSU	60-18	0	0.00	2	7	-.286	59	0.98	16	0.27	19	282	4.70	8	0	0	0	0.00	0	0	16.0	0.27
2021-22	JSU	103-29	2	0.02	1	10	.100	88	0.85	33	0.32	30	371	3.60	24	0	0	0	0.00	0	1	35.0	0.34
2022-23	JSU	110-30	2	0.02	0	6	.333	117	1.06	38	0.35	40	415	3.77	12	0	0	0	0.00	0	2	40.0	0.36
2023-24	LSU	43-12	0	0.00	0	1	.000	45	1.05	14	0.33	24	101	2.35	7	0	0	0	0.00	0	0	14.0	0.33
TOTAL FOR LSU		43 - 12	0	0.00	0	1	.000	45	1.05	14	0.33	24	101	2.35	7	0	0	0	0.00	0	0	14.0	0.33
TOTAL		422 - 119	6	0.01	4	31	.065	402	0.95	127	0.30	154	1573	3.73	75	0	0	0	0.00	0	3	133.0	0.32



ANITA ANWUSI

11

Middle Blocker • 6-3 • Graduate • 4L • Houston, Texas (Alief Hastings HS)

SEASON HIGHS

Kills	13 vs. Southeastern La. (09/10/23) vs. UCLA (08/25/23)
Attacks	20 vs. UL-Lafayette (09/06/23)
Hit % (Min. 10 att)	.667 vs. Southeastern La. (09/10/23) vs. UCLA (08/25/23)
Assists	1 vs. Ball State (09/03/23) vs. UCLA (08/25/23)
Aces	NA
Digs	3 vs. UL-Lafayette (09/06/23)
Total Blocks	6 vs. Missouri (09/29/23) vs. UCLA (08/25/23)
Block Solos	2 vs. UCLA (08/25/23)
Block Assists	6 vs. Missouri (09/29/23)

CAREER HIGHS

Kills	16 at Ole Miss (11/12/21)
Attacks	27 vs. Mississippi St. (10/21/20)
Hit % (Min. 10 att)	.700 at Mississippi St. (10/02/21)
Assists	1, Seven Times
Aces	NA
Digs	3 vs. UL-Lafayette (09/06/23)
Total Blocks	9, Four Times
Block Solos	4 at Tennessee (03/24/21)
Block Assists	9 vs. Troy (09/18/21)

Complete bio

Graduate Season (2023)

- Ranks No. 6 in the SEC with a .373 hitting percentage.
- Leads the team in blocks with 36 total and has 105 kills this season.
- Has logged a season-high six blocks twice this season vs. Missouri (Sept. 29) and UCLA (Aug. 25).
- Has three matches hitting over .600, including two matches hitting .667.
- Trained with USA Volleyball 2023 Women's Collegiate Team this summer.
- Named to Preseason All-SEC Team for second consecutive season (2022-2023).
- Finished the 2022 season ranked No. 8 in the SEC with 1.14 blocks per set (136 total).

2023 SEASON MATCH-BY-MATCH

Date	Opponent	SP	Attack				Set			Serve			Recept			Blocking				Team						
			K	E	TA	PCT	A	TA	PCT	SA	SE	TA	PCT	RE	TA	PCT	DIG	BS	BA	BE	TOTAL	BHE	POINTS	HIT%	SCORE	
08/25/2023	UCLA	*5	13	1	18	.667	1	2	.500	0	0	0	.000	0	1	1.000	0	2	4	0	6.0	0	17.0	.314	3-2	
08/26/2023	UCLA	*5	6	1	14	.357	0	1	.000	0	0	0	.000	0	0	.000	1	1	4	1	5.0	0	9.0	.196	2-3	
09/01/2023	vs UNI	*3	11	1	19	.526	0	0	.000	0	0	0	.000	0	0	.000	1	0	3	3	3.0	0	12.5	.304	0-3	
09/02/2023	at Creighton	*3	6	4	17	.118	0	1	.000	0	0	0	.000	0	0	.000	0	0	2	1	2.0	0	7.0	.171	0-3	
09/03/2023	vs Ball St.	*4	8	0	13	.615	1	2	.500	0	1	2	.500	0	0	.000	1	0	1	1	1.0	0	8.5	.266	3-1	
09/06/2023	Louisiana	*4	9	2	20	.350	0	1	.000	0	0	0	.000	0	0	.000	3	0	0	0	0.0	0	9.0	.271	3-1	
09/10/2023	Southeastern La.	*4	13	1	18	.667	0	1	.000	0	0	0	.000	0	1	1.000	1	0	2	1	2.0	0	14.0	.271	1-3	
09/15/2023	vs A&M-Corpus Christi	*3	5	2	8	.375	0	2	.000	0	0	0	.000	0	0	.000	0	0	2	0	2.0	0	6.0	.321	3-0	
09/16/2023	vs Texas Tech	*3	7	1	13	.462	0	0	.000	0	0	0	.000	0	0	.000	2	0	2	1	2.0	0	8.0	.324	3-0	
09/17/2023	at SMU	*3	4	3	16	.063	0	0	.000	0	0	0	.000	0	0	.000	2	0	2	0	2.0	0	5.0	.200	0-3	
09/22/2023	at Kentucky	*4	8	4	16	.250	0	1	.000	0	0	0	.000	0	2	1.000	0	0	4	1	4.0	0	10.0	.135	1-3	
09/29/2023	Missouri	*4	8	5	17	.176	0	0	.000	0	0	0	.000	0	0	.000	0	0	6	0	6.0	0	11.0	.208	3-1	
10/01/2023	Mississippi St.	*4	7	4	15	.200	0	1	.000	0	0	0	.000	0	0	.000	0	0	1	1	1.0	0	7.5	.228	3-1	
Totals			49	105	29	204	.373	2	12	.167	0	1	2	.500	0	4	1.000	11	3	33	10	36.0	0	124.5		

Player Averages

Sets Played	Kills per set	Assists per set	Service aces per set	Digs per set	Blocks per set	Points per set
49	2.14	0.04	0.00	0.22	0.73	2.54

ANWUSI'S CAREER STATS

ANWUSI, Anita

SEASON	TEAM	SM-MP	K	K/S	E	TA	PCT	A	A/S	SA	SA/S	SE	DIG	D/S	RE	BS	BA	TB	B/S	BE	BHE	PTS	PTS/S
2019-20	LSU	51-20	47	0.92	25	120	.183	2	0.04	0	0.00	0	3	0.06	0	3	54	57	1.12	3	1	77.0	1.51
2020-21	LSU	77-22	108	1.40	45	261	.241	1	0.01	0	0.00	0	15	0.19	0	16	35	51	0.66	4	0	141.5	1.84
2021-22	LSU	88-23	148	1.68	42	306	.346	0	0.00	0	0.00	1	12	0.14	2	14	88	102	1.16	5	0	206.0	2.34
2022-23	LSU	119-30	221	1.86	82	481	.289	3	0.03	0	0.00	0	18	0.15	0	20	116	136	1.14	5	0	299.0	2.51
2023-24	LSU	49-13	105	2.14	29	204	.373	2	0.04	0	0.00	1	11	0.22	0	3	33	36	0.73	10	0	124.5	2.54
TOTAL		364-108	628	1.64	223	1372	.286	6	0.02	0	0.00	2	59	0.15	2	56	326	382	0.99	23	1	848.0	2.31



ALIA WILLIAMS

12

Middle Block • 6-1 • Senior • 2L • Houston, Texas (Kingwood Park HS)

SEASON HIGHS

Kills	5 vs. UCLA (08/26/23)
Attacks	12 vs. UCLA (08/26/23)
Hit % (Min. 10 att)	.250 vs. UCLA (08/26/23)
Assists	1 vs. UCLA (08/26/23)
Aces	1 at No. 20 Creighton (09/02/23)
Digs	2 at No. 20 Creighton (09/02/23) vs. UCLA (08/26/23)
Total Blocks	3, Three Times
Block Solos	1 vs. UNI (09/01/23) vs. UCLA (08/26/23)
Block Assists	3 at No. 20 Creighton (09/02/23) vs. UCLA (08/25/23)

CAREER HIGHS

Kills	14 at No. 15 Florida (10/08/22)
Attacks	27 vs. Mississippi St. (10/29/22)
Hit % (Min. 10 att)	.583 at No. 23 Marquette (09/10/22) at Milwaukee (09/09/22)
Assists	20 at Tennessee (03/25/21)
Aces	2 at Missouri (01/30/21)
Digs	6 at Missouri (01/30/21)
Total Blocks	7 vs. Hawai'i (12/02/22)
Block Solos	2 at Tennessee (11/06/22) at No. 15 Kentucky (09/25/22)
Block Assists	7 vs. Hawai'i (12/02/22)

Complete bio

Senior Season (2023)

- Hit a career-high .583 in back-to-back matches at Milwaukee and No. 23 Marquette last season (Sept. 9-10).
- Logged a career-best 14 kills at No. 15 Florida (Oct. 8) and two solo blocks at No. 15 Kentucky (Sept. 25) and at Tennessee (Nov. 6).
- Recorded a career-high seven blocks in the NCAA Tournament victory over Hawai'i (Dec. 2).
- Has seen playing time at the middle blocker and setter position for the Tigers.

2023 SEASON MATCH-BY-MATCH

Date	Opponent	SP	Attack				Set			Serve			Recept			Blocking				Team						
			K	E	TA	PCT	A	TA	PCT	SA	SE	TA	PCT	RE	TA	PCT	DIG	BS	BA	BE	TOTAL	BHE	POINTS	HIT%	SCORE	
08/25/2023	UCLA	*5	2	3	7	.143	0	0	.000	0	0	0	.000	0	0	.000	1	0	3	0	3.0	0	3.5	.314	3-2	
08/26/2023	UCLA	*5	5	2	12	.250	1	1	1.000	0	0	0	.000	0	0	.000	2	1	1	0	2.0	0	6.5	.196	2-3	
09/01/2023	vs UNI	*3	2	1	10	.100	0	0	.000	0	0	0	.000	0	0	.000	1	1	2	2	3.0	0	4.0	.304	0-3	
09/02/2023	at Creighton	*3	1	0	7	.143	0	1	.000	1	2	7	.714	0	0	.000	2	0	3	0	3.0	0	3.5	.171	0-3	
Totals			16	10	6	.36	.111	1	2	.500	1	2	7	.714	0	0	.000	6	2	9	2	11.0	0	17.5		

Player Averages

Sets Played	Kills per set	Assists per set	Service aces per set	Digs per set	Blocks per set	Points per set
16	0.63	0.06	0.06	0.38	0.69	1.09

WILLIAMS' CAREER STATS

SEASON	TEAM	SM-MP	K	K/S	E	TA	PCT	A	A/S	SA	SA/S	SE	DIG	D/S	RE	BS	BA	TB	B/S	BE	BHE	PTS	PTS/S
2020-21	LSU	32-15	23	0.72	8	73	.205	20	0.63	4	0.13	6	13	0.41	0	2	14	16	0.50	2	1	36.0	1.13
2021-22	LSU	1-1	0	0.00	0	0	.000	2	2.00	0	0.00	0	0	0.00	0	0	0	0	0.00	0	0	0.0	0.00
2022-23	LSU	119-30	164	1.38	58	409	.259	5	0.04	7	0.06	31	49	0.41	2	12	87	99	0.83	5	1	226.5	1.90
2023-24	LSU	16-4	10	0.63	6	36	.111	1	0.06	1	0.06	2	6	0.38	0	2	9	11	0.69	2	0	17.5	1.09
TOTAL			168	1.17	72	518	.241	28	0.17	12	0.07	39	68	0.40	2	16	110	126	0.75	9	2	280.0	1.67



AC FROEHLICH

13

Outside Hitter • 6-1 • Freshman • HS • Lafayette, La. (St. Thomas HS)

SEASON HIGHS

Kills	NA
Attacks	NA
Hit % (Min. 10 att)	NA
Assists	NA
Aces	1 vs. Southeastern La. (09/10/23)
Digs	4 vs. Southeastern La. (09/10/23)
Total Blocks	NA
Block Solos	NA
Block Assists	NA

CAREER HIGHS

Kills	NA
Attacks	NA
Hit % (Min. 10 att)	NA
Assists	NA
Aces	1 vs. Southeastern La. (09/10/23)
Digs	4 vs. Southeastern La. (09/10/23)
Total Blocks	NA
Block Solos	NA
Block Assists	NA

Complete bio

Freshman Season (2023)

- Logged an ace and four digs in her collegiate debut vs. Southeastern Louisiana (Sept. 10).
- Helped lead St. Thomas More High School to a 2022 Louisiana State Championship title.
- Named the 2022 Louisiana Gatorade Player of the Year.
- A 2022 AVCA High School All-American.

2023 SEASON MATCH-BY-MATCH

			Attack			Set			Serve			Recept			Blocking				Team						
Date	Opponent	SP	K	E	TA	PCT	A	TA	PCT	SA	SE	TA	PCT	RE	TA	PCT	DIG	BS	BA	BE	TOTAL	BHE	POINTS	HIT%	SCORE
09/10/2023	Southeastern La.	4	0	0	0	.000	0	0	.000	1	1	12	.917	0	0	.000	4	0	0	0	0.0	0	1.0	.271	1-3
Totals		4	0	0	0	.000	0	0	.000	1	1	12	.917	0	0	.000	4	0	0	0	0.0	0	1.0		

Player Averages

Sets Played	Kills per set	Assists per set	Service aces per set	Digs per set	Blocks per set	Points per set
4	0.00	0.00	0.25	1.00	0.00	0.25

FROEHLICH'S CAREER STATS

SEASON	TEAM	SM-MP	K	K/S	E	TA	PCT	A	A/S	SA	SA/S	SE	DIG	D/S	RE	BS	BA	TB	B/S	BE	BHE	PTS	PTS/S
2023-24	LSU	4-1	0	0.00	0	0	.000	0	0.00	1	0.25	1	4	1.00	0	0	0	0	0.00	0	0	1.0	0.25
TOTAL		4 - 1	0	0.00	0	0	.000	0	0.00	1	0.25	1	4	1.00	0	0	0	0	0.00	0	0	1.0	0.25



BRI ZAMORA

15

Defensive Specialist/Libero • 5-4 • Sophomore • 1L • League City, Texas (Clear Creek HS)

SEASON HIGHS

Kills	NA
Attacks	NA
Hit % (Min. 10 att)	NA
Assists	NA
Aces	NA
Digs	NA
Total Blocks	NA
Block Solos	NA
Block Assists	NA

CAREER HIGHS

Kills	NA
Attacks	NA
Hit % (Min. 10 att)	NA
Assists	1 at No. 15 Kentucky (09/25/22)
Aces	2, Three Times
Digs	4 at Alabama (10/19/22)
Total Blocks	NA
Block Solos	NA
Block Assists	NA

[Complete bio](#)

Sophomore Season (2023)

- Logged a career-high two aces last season vs. Ole Miss (Sept. 30), at Alabama (Oct. 19) and vs. Mississippi St. (Oct. 29).
- Was an AVCA Best and Brightest Team selection.

2022 SEASON MATCH-BY-MATCH

		Attack				Set		Serve				Recept			Blocking				Team					
Date	Opponent	SP	K	E	TA	PCT	A	TA	PCT	SA	SE	TA	PCT	RE	TA	PCT	DIG	BS	BA	BE	TOTAL	BHE	POINTS	HIT% SCORE
09/02/2022	Troy	3	0	0	0	.000	0	0	.000	0	0	1	1.000	0	0	.000	0	0	0	0	0.0	0	0.0	.384 3-0
09/09/2022	at Milwaukee	4	0	0	0	.000	0	0	.000	0	1	10	.900	0	0	.000	3	0	0	0	0.0	0	0.0	.333 3-1
09/16/2022	vs Oregon St.	1	0	0	0	.000	0	0	.000	1	2	4	.500	0	0	.000	0	0	0	0	0.0	0	1.0	.254 3-0
09/21/2022	Arkansas	2	0	0	0	.000	0	0	.000	0	0	4	1.000	0	0	.000	1	0	0	0	0.0	0	0.0	.184 3-2
09/25/2022	at Kentucky	1	0	0	0	.000	1	1	1.000	0	1	5	.800	0	0	.000	2	0	0	0	0.0	0	0.0	.274 0-3
09/30/2022	Ole Miss	3	0	0	0	.000	0	1	.000	2	1	8	.875	0	0	.000	1	0	0	0	0.0	0	2.0	.277 3-2
10/01/2022	Ole Miss	3	0	0	0	.000	0	0	.000	0	0	5	1.000	0	0	.000	0	0	0	0	0.0	0	0.0	.220 2-3
10/05/2022	Auburn	5	0	0	0	.000	0	0	.000	0	1	6	.833	0	0	.000	0	0	0	0	0.0	0	0.0	.202 3-2
10/08/2022	at Florida	3	0	0	0	.000	0	0	.000	0	0	6	1.000	0	0	.000	0	0	0	0	0.0	0	0.0	.124 1-3
10/09/2022	at Florida	5	0	0	0	.000	0	0	.000	0	2	11	.818	0	0	.000	2	0	0	0	0.0	0	0.0	.168 2-3
10/19/2022	at Alabama	4	0	0	0	.000	0	1	.000	2	2	14	.857	0	0	.000	4	0	0	0	0.0	0	2.0	.135 3-2
10/23/2022	South Carolina	2	0	0	0	.000	0	0	.000	1	0	4	1.000	0	0	.000	0	0	0	0	0.0	0	1.0	.320 3-0
10/29/2022	Mississippi St.	4	0	0	0	.000	0	2	.000	2	0	8	1.000	0	0	.000	1	0	0	0	0.0	0	2.0	.218 3-2
10/30/2022	Mississippi St.	5	0	0	0	.000	0	1	.000	0	0	9	1.000	0	0	.000	0	0	0	0	0.0	0	0.0	.167 2-3
11/05/2022	at Tennessee	2	0	0	0	.000	0	0	.000	0	0	4	1.000	0	0	.000	0	0	0	0	0.0	0	0.0	.208 0-3
Totals		47	0	0	0	.000	1	6	.167	8	10	99	.899	0	0	.000	14	0	0	0	0.0	0	8.0	

Player Averages

Sets Played	Kills per set	Assists per set	Service aces per set	Digs per set	Blocks per set	Points per set
47	0.00	0.02	0.17	0.30	0.00	0.17

ZAMORA'S CAREER STATS

SEASON	TEAM	SM-MP	K	K/S	E	TA	PCT	A	A/S	SA	SA/S	SE	DIG	D/S	RE	BS	BA	TB	B/S	BE	BHE	PTS	PTS/S
2022-23	LSU	47-15	0	0.00	0	0	.000	1	0.02	8	0.17	10	14	0.30	0	0	0	0	0.00	0	0	8.0	0.17
TOTAL		47 - 15	0	0.00	0	0	.000	1	0.02	8	0.17	10	14	0.30	0	0	0	0	0.00	0	0	8.0	0.17



ELLIE ECHTER

16

Right Side/Outside Hitter · 6-1 · Redshirt Sophomore · 1L · Fulshear, Texas (Fulshear HS)

SEASON HIGHS

Kills	1 vs. A&M-Corpus Christi (09/15/23)
Attacks	2 vs. A&M-Corpus Christi (09/15/23)
Hit % (Min. 10 att)	NA
Assists	NA
Aces	NA
Digs	NA
Total Blocks	NA
Block Solos	NA
Block Assists	NA

CAREER HIGHS

Kills	6 at Arkansas (09/22/21) vs. Sam Houston (09/11/21) vs. Oregon St. (09/03/21)
Attacks	17 at Mississippi St. (10/01/21)
Assists	1 at Samford (09/17/21)
Hit % (Min. 10 att)	.214 vs. Sam Houston St. (09/11/21)
Aces	1 at Ole Miss (11/11/21) at Mississippi St. (10/01/21) vs. Sam Houston (09/11/21)
Digs	6 vs. Alabama (09/25/21)
Total Blocks	5 vs. Troy (09/18/21)
Block Solos	NA
Block Assists	5 vs. Troy (09/18/21)

Complete bio

Redshirt Sophomore Season (2023)

- Recorded a kill in her first match back since 2021 against Texas A&M-Corpus Christi (Sept. 15).
- Redshirt the 2022 season.
- Recorded 25 kills and 13 blocks in 40 sets played in 2021.

2023 SEASON MATCH-BY-MATCH

		Attack				Set				Serve				Recept				Blocking				Team			
Date	Opponent	SP	K	E	TA	PCT	A	TA	PCT	SA	SE	TA	PCT	RE	TA	PCT	DIG	BS	BA	BE	TOTAL	BHE	POINTS	HIT%	SCORE
09/15/2023	vs A&M-Corpus Christi	1	1	0	2	.500	0	0	.000	0	0	1	1.000	0	1	1.000	0	0	0	0	0.0	0	1.0	.321	3-0
Totals		1	1	0	2	.500	0	0	.000	0	0	1	1.000	0	1	1.000	0	0	0	0	0.0	0	1.0		

Player Averages

Sets Played	Kills per set	Assists per set	Service aces per set	Digs per set	Blocks per set	Points per set
1	1.00	0.00	0.00	0.00	0.00	1.00

ECHTER'S CAREER STATS

SEASON	TEAM	SM-MP	K	K/S	E	TA	PCT	A	A/S	SA	SA/S	SE	DIG	D/S	RE	BS	BA	TB	B/S	BE	BHE	PTS	PTS/S
2021-22	LSU	40-14	25	0.63	21	85	.047	1	0.03	3	0.08	14	21	0.53	1	0	13	13	0.33	0	0	34.5	0.86
2023-24	LSU	1-1	1	1.00	0	2	.500	0	0.00	0	0.00	0	0	0.00	0	0	0	0	0.00	0	0	1.0	1.00
TOTAL		41 - 15	26	0.63	21	87	.057	1	0.02	3	0.07	14	21	0.51	1	0	13	13	0.32	0	0	35.5	0.87



ALEXIS ROBERSON

17

Middle Blocker • 6-3 • Redshirt Freshman • RS • Missouri City, Texas (Ridge Point HS)

SEASON HIGHS

Kills	NA
Attacks	NA
Hit % (Min. 10 att)	NA
Assists	NA
Aces	NA
Digs	NA
Total Blocks	NA
Block Solos	NA
Block Assists	NA

CAREER HIGHS

Kills	NA
Attacks	NA
Hit % (Min. 10 att)	NA
Assists	NA
Aces	NA
Digs	NA
Total Blocks	NA
Block Solos	NA
Block Assists	NA

Complete bio

Redshirt Freshman Season (2023)

- Redshirt the 2022 season.
- Led Ridge Point High School team to the 6A Texas State Finals.

2023 SEASON MATCH-BY-MATCH

ROBERSON'S CAREER STATS



MIKA ROME

20

Setter • 5-10 • Freshman • HS • Ra'anana, Israel (Mekif HaSharon School)

SEASON HIGHS

Kills	NA
Attacks	NA
Hit % (Min. 10 att)	NA
Assists	NA
Aces	NA
Digs	NA
Total Blocks	NA
Block Solos	NA
Block Assists	NA

CAREER HIGHS

Kills	NA
Attacks	NA
Hit % (Min. 10 att)	NA
Assists	NA
Aces	NA
Digs	NA
Total Blocks	NA
Block Solos	NA
Block Assists	NA

* Includes matches played at Nicholls State.

[Complete bio](#)

Freshman Season (2023)

- Played for the Israeli National Team and was captain for a number of youth Israeli teams.
- U21 Israeli Team qualified for the European Championship and finished 7th.

2023 SEASON MATCH-BY-MATCH

ROME'S CAREER STATS



MADDIE WAAK

22

Setter • 5-10 • Sophomore • 1L • Brookshire, Texas (Katy HS)

SEASON HIGHS

Kills	4 vs. Mississippi St. (10/1/23)
Attacks	11 vs. UCLA (08/26/23)
Hit % (Min. 10 att)	NA
Assists	51 vs. UCLA (08/25/23)
Aces	3 at No. 20 Creighton (09/02/23)
Digs	20 vs. UL-Lafayette (09/06/23)
Total Blocks	3 vs. Ball State (09/03/23)
Block Solos	1 vs. UCLA (08/25/23)
Block Assists	3 vs. Ball State (09/03/23)

CAREER HIGHS

Kills	4 vs. Mississippi St. (10/1/23)
Attacks	11 vs. UCLA (08/26/23)
Hit % (Min. 10 att)	NA
Assists	51 vs. UCLA (08/25/23)
Aces	3 at No. 20 Creighton (09/02/23) vs. Iowa St. (09/02/22)
Digs	20 vs. UL-Lafayette (09/06/23)
Total Blocks	3 vs. Ball State (09/03/23) at Alabama (10/19/22)
Block Solos	1 vs. UCLA (08/25/23)
Block Assists	3 vs. Ball State (09/03/23) at Alabama (10/19/22)

[Complete bio](#)

Sophomore Season (2023)

- Ranks No. 7 in the SEC with 9.73 assists per set and has a team-high 16 total aces.
- Recorded a new career-high 51 assists and had 11 digs in the season opener vs. UCLA (Aug. 25).
- Has six matches this season with multiple aces.
- Has four double-doubles this season.
- Turned in a career-high 20 digs vs. UL-Lafayette (Sept. 6) and averages 2.41 digs per set this season.

2023 SEASON MATCH-BY-MATCH

		Attack				Set		Serve				Recept		Blocking				Team							
Date	Opponent	SP	K	E	TA	PCT	A	TA	PCT	SA	SE	TA	PCT	RE	TA	PCT	DIG	BS	BA	BE	TOTAL	BHE	POINTS	HIT%	SCORE
08/25/2023	UCLA	*5	2	1	5	.200	51	99	.515	2	1	20	.950	0	0	.000	11	1	1	0	2.0	0	5.5	.314	3-2
08/26/2023	UCLA	*5	3	3	11	.000	42	109	.385	2	0	13	1.000	0	0	.000	4	0	1	0	1.0	2	5.5	.196	2-3
09/01/2023	vs UNI	*3	1	0	3	.333	39	100	.390	0	0	12	1.000	0	0	.000	7	0	0	0	0.0	0	1.0	.304	0-3
09/02/2023	at Creighton	*3	0	0	0	.000	21	68	.309	3	0	12	1.000	0	0	.000	7	0	0	0	0.0	0	3.0	.171	0-3
09/03/2023	vs Ball St.	*4	3	0	5	.600	36	84	.429	2	1	22	.955	0	0	.000	8	0	3	1	3.0	0	6.5	.266	3-1
09/06/2023	Louisiana	*4	1	2	6	-.167	42	93	.452	1	1	18	.944	0	1	1.000	20	0	1	0	1.0	0	2.5	.271	3-1
09/10/2023	Southeastern La.	*4	1	0	3	.333	47	122	.385	0	3	14	.786	0	0	.000	8	0	2	0	2.0	0	2.0	.271	1-3
09/15/2023	vs A&M-Corpus Christi	*3	2	1	5	.200	26	54	.481	2	3	23	.870	0	1	1.000	7	0	0	1	0.0	0	4.0	.321	3-0
09/16/2023	vs Texas Tech	*3	1	0	3	.333	35	83	.422	1	2	16	.875	0	0	.000	5	0	0	0	0.0	0	2.0	.324	3-0
09/17/2023	at SMU	*3	3	0	4	.750	25	79	.316	0	2	9	.778	0	0	.000	14	0	0	0	0.0	2	3.0	.200	0-3
09/22/2023	at Kentucky	*4	3	0	6	.500	31	108	.287	0	1	15	.933	0	0	.000	4	0	1	1	1.0	0	3.5	.135	1-3
09/29/2023	Missouri	*4	1	1	5	.000	32	98	.327	2	4	21	.810	0	0	.000	17	0	1	1	1.0	0	3.5	.208	3-1
10/01/2023	Mississippi St.	*4	4	0	5	.800	50	122	.410	1	1	16	.938	0	0	.000	6	0	1	0	1.0	0	5.5	.228	3-1
Totals		49	25	8	61	.279	477	1219	.391	16	19	211	.910	0	2	1.000	118	1	11	4	12.0	4	47.5		

Player Averages

Sets Played	Kills per set	Assists per set	Service aces per set	Digs per set	Blocks per set	Points per set
49	0.51	9.73	0.33	2.41	0.24	0.97

WAAK'S CAREER STATS

SEASON	TEAM	SM-MP	K	K/S	E	TA	PCT	A	A/S	SA	SA/S	SE	DIG	D/S	RE	BS	BA	TB	B/S	BE	BHE	PTS	PTS/S
2022-23	LSU	107-29	7	0.07	6	28	.036	469	4.38	20	0.19	32	134	1.25	0	0	7	7	0.07	0	1	30.5	0.29
2023-24	LSU	49-13	25	0.51	8	61	.279	477	9.73	16	0.33	19	118	2.41	0	1	11	12	0.24	4	4	47.5	0.97
TOTAL		156 - 42	32	0.21	14	89	.202	946	6.06	36	0.23	51	252	1.62	0	1	18	19	0.12	4	5	78.0	0.50



JADE DEMPS

23

Right Side • 6-2 • Senior • TR • New Braunfels, Texas (Wisconsin)

SEASON HIGHS

Kills	15 vs. UL-Lafayette (09/06/23)
Attacks	36 vs. Southeastern La. (09/10/23)
Hit % (Min. 10 att)	.400 vs. A&M-Corpus Christi (09/15/23) vs. UL-Lafayette (09/06/23)
Assists	3 at No. 22 Kentucky (09/22/23) vs. Ball State (09/03/23)
Aces	3 vs. Ball State (09/03/23) vs. UCLA (08/26/23)
Digs	17 vs. UCLA (08/26/23)
Total Blocks	4 vs. UNI (09/01/23)
Block Solos	1 vs. UL-Lafayette (09/06/23)
Block Assists	4 vs. UNI (09/01/23)

CAREER HIGHS

Kills	18 at Minnesota (11/21/21)*
Attacks	49 at Minnesota (11/21/21)*
Hit % (Min. 10 att)	.545 vs. Penn St. (10/23/22)*
Assists	3, Three Times (1X*)
Aces	3 vs. Ball State (09/03/23) vs. UCLA (08/26/23)
Digs	17 vs. UCLA (08/26/23)
Total Blocks	4 vs. UNI (09/01/23) at Purdue (10/31/21)*
Block Solos	1, Three Times (2x*)
Block Assists	4 vs. UNI (09/01/23) at Purdue (10/31/21)*

* Played at Wisconsin.

[Complete bio](#)

Senior Season (2023)

- Ranks second on the team with 2.41 kills per set and 118 total kills. Also averages 2.31 digs per set (113 total).
- Has three double-doubles this season, including the season opener to begin her career with LSU.
- Set new career highs of 17 digs and three aces vs. UCLA (Aug. 26) on opening weekend.
- Has six matches with 10 or more digs this season.
- Made two Final Four appearances and won the 2021 National Championship with Wisconsin.
- Attended the same high school as Pete Maravich - Broughton HS in North Carolina.

2023 SEASON MATCH-BY-MATCH

		Attack					Set			Serve				Recept			Blocking				Team				
Date	Opponent	SP	K	E	TA	PCT	A	TA	PCT	SA	SE	TA	PCT	RE	TA	PCT	DIG	BS	BA	BE	TOTAL	BHE	POINTS	HIT%	SCORE
08/25/2023	UCLA	*5	14	6	33	.242	2	4	.500	1	3	19	.842	1	11	.909	10	0	3	0	3.0	0	16.5	.314	3-2
08/26/2023	UCLA	*5	7	4	29	.103	0	5	.000	3	0	24	1.000	1	15	.933	17	0	2	0	2.0	0	11.0	.196	2-3
09/01/2023	vs UNI	*3	7	1	18	.333	1	3	.333	0	0	9	1.000	0	14	1.000	12	0	4	1	4.0	0	9.0	.304	0-3
09/02/2023	at Creighton	*3	9	1	23	.348	1	2	.500	0	0	2	1.000	1	2	.500	2	0	1	0	1.0	0	9.5	.171	0-3
09/03/2023	vs Ball St.	*4	11	4	28	.250	3	4	.750	3	2	13	.846	0	16	1.000	7	0	1	0	1.0	1	14.5	.266	3-1
09/06/2023	Louisiana	*4	15	3	30	.400	0	2	.000	0	2	14	.857	0	9	1.000	10	1	2	0	3.0	0	17.0	.271	3-1
09/10/2023	Southeastern La.	*4	11	8	36	.083	1	3	.333	0	3	11	.727	0	14	1.000	8	0	1	0	1.0	0	11.5	.271	1-3
09/15/2023	vs A&M-Corpus Christi	*3	8	0	20	.400	1	2	.500	0	1	7	.857	0	4	1.000	7	0	1	0	1.0	0	8.5	.321	3-0
09/16/2023	vs Texas Tech	*3	8	3	28	.179	1	2	.500	1	0	8	1.000	1	10	.900	12	0	1	0	1.0	0	9.5	.324	3-0
09/17/2023	at SMU	*3	7	4	23	.130	2	4	.500	0	1	11	.909	1	18	.944	5	0	0	0	0.0	0	7.0	.200	0-3
09/22/2023	at Kentucky	*4	4	4	27	.000	3	6	.500	0	0	12	1.000	1	12	.917	4	0	2	0	2.0	0	5.0	.135	1-3
09/29/2023	Missouri	*4	6	2	19	.211	1	3	.333	1	0	3	1.000	0	9	1.000	7	0	2	0	2.0	0	8.0	.208	3-1
10/01/2023	Mississippi St.	*4	11	1	27	.370	1	1	1.000	0	2	9	.778	0	14	1.000	12	0	0	1	0.0	0	11.0	.228	3-1
Totals		49	118	41	341	.226	17	41	.415	9	14	142	.901	6	148	.959	113	1	20	2	21.0	1	138.0		

Player Averages

Sets Played	Kills per set	Assists per set	Service aces per set	Digs per set	Blocks per set	Points per set
49	2.41	0.35	0.18	2.31	0.43	2.82

DEMPS' CAREER STATS

SEASON	TEAM	SM-MP	K	K/S	E	TA	PCT	A	A/S	SA	SA/S	SE	DIG	D/S	RE	BS	BA	TB	B/S	BE	BHE	PTS	PTS/S
2020-21	Wisc	23-12	48	2.09	11	108	.343	0	0.00	0	0.00	0	4	0.17	1	1	2	3	0.13	2	0	50.0	2.17
2021-22	Wisc	98-31	189	1.93	60	481	.268	9	0.09	7	0.07	23	109	1.11	1	1	20	21	0.21	8	0	207.0	2.11
2022-23	Wisc	69-27	80	1.16	19	216	.282	1	0.01	2	0.03	3	39	0.57	1	0	22	22	0.32	1	1	93.0	1.35
2023-24	LSU	49-13	118	2.41	41	341	.226	17	0.35	9	0.18	14	113	2.31	6	1	20	21	0.43	2	1	138.0	2.82
TOTAL FOR LSU		49 - 13	118	2.41	41	341	.226	17	0.35	9	0.18	14	113	2.31	6	1	20	21	0.43	2	1	138.0	2.82
TOTAL		239 - 83	435	1.82	131	1146	.265	27	0.11	18	0.08	40	265	1.11	9	3	64	67	0.28	13	2	488.0	2.04



EMILY MITTER

29

Setter • 5-9 • Graduate Student • TR • Redondo, Beach, Calif. (Campbell))

SEASON HIGHS

Kills	NA
Attacks	1 vs. Southeastern La. (09/10/23)
Hit % (Min. 10 att)	NA
Assists	6 vs. Ball State (09/03/23)
Aces	1 at No. 20 Creighton (09/02/23)
Digs	3 at No. 20 Creighton (09/02/23)
Total Blocks	NA
Block Solos	NA
Block Assists	NA

CAREER HIGHS*

Kills	1, Seven Times*
Attacks	9 at UNC Asheville (02/12/21)*
Hit % (Min. 10 att)	NA
Assists	36 vs. Radford (11/05/22)*
Aces	6 vs. Presbyterian (11/12/21)*
Digs	16 vs. N.C. A&T (10/29/21)* at N.C. Central (09/07/19)*
Total Blocks	1, Three Times*
Block Solos	NA
Block Assists	1, Three Times*

* Played at Campbell.

[Complete bio](#)

Graduate Season (2023)

- Has 1,921 career assists (4.88/set), 813 career digs (2.06/set) and 83 career aces.
- Registered five assists and an ace in her first match as a LSU Tiger.
- A four-year letterwinner who transferred in from Campbell.
- Turned in three matches with 30 or more assists last season, including a career-high 36 assists vs. Radford.
- Totaled eight double-doubles last season.

2023 SEASON MATCH-BY-MATCH

		Attack					Set			Serve				Recept			Blocking				Team				
Date	Opponent	SP	K	E	TA	PCT	A	TA	PCT	SA	SE	TA	PCT	RE	TA	PCT	DIG	BS	BA	BE	TOTAL	BHE	POINTS	HIT%	SCORE
09/02/2023	at Creighton	2	0	0	0	.000	5	26	.192	1	1	9	.889	0	1	1.000	3	0	0	0	0.0	0	1.0	.171	0-3
09/03/2023	vs Ball St.	1	0	0	0	.000	6	16	.375	0	0	3	1.000	0	0	.000	0	0	0	0	0.0	0	0.0	.266	3-1
09/10/2023	Southeastern La.	1	0	0	1	.000	3	6	.500	0	0	0	.000	0	0	.000	0	0	0	0	0.0	0	0.0	.271	1-3
Totals		4	0	0	1	.000	14	48	.292	1	1	12	.917	0	1	1.000	3	0	0	0	0.0	0	1.0		

Player Averages

Sets Played	Kills per set	Assists per set	Service aces per set	Digs per set	Blocks per set	Points per set
4	0.00	3.50	0.25	0.75	0.00	0.25

MITTER'S CAREER STATS

SEASON	TEAM	SM-MP	K	K/S	E	TA	PCT	A	A/S	SA	SA/S	SE	DIG	D/S	RE	BS	BA	TB	B/S	BE	BHE	PTS	PTS/S
2019-20	Campb	108-30	3	0.03	3	17	.000	505	4.68	31	0.29	24	206	1.91	2	0	1	1	0.01	0	7	34.5	0.32
2020-21	Campb	52-16	1	0.02	2	22	-.045	246	4.73	8	0.15	13	110	2.12	2	0	0	0	0.00	0	3	9.0	0.17
2021-22	Campb	114-31	2	0.02	2	28	.000	494	4.33	23	0.20	16	246	2.16	0	0	1	1	0.01	1	10	25.5	0.22
2022-23	Campb	116-30	4	0.03	4	22	.000	662	5.71	20	0.17	14	248	2.14	1	0	1	1	0.01	0	6	24.5	0.21
2023-24	LSU	4-3	0	0.00	0	1	.000	14	3.50	1	0.25	1	3	0.75	0	0	0	0	0.00	0	0	1.0	0.25
TOTAL FOR LSU		4 - 3	0	0.00	0	1	.000	14	3.50	1	0.25	1	3	0.75	0	0	0	0	0.00	0	0	1.0	0.25
TOTAL		394 - 110	10	0.03	11	90	-.011	1921	4.88	83	0.21	68	813	2.06	5	0	3	3	0.01	1	26	94.5	0.24