

# 2023 LSU VOLLEYBALL

## MATCH NOTES | SENIOR DAY - VS. ALABAMA

### NOV. 5



#### LSU VOLLEYBALL SCHEDULE

##### TIGER CLASSIC

Aug. 25 (F)	UCLA	SECN+	W, 3-2
Aug. 26 (S)	UCLA	SECN+	L, 3-2

##### BLUEJAY INVITATIONAL

Sept. 1 (F)	vs. UNI	FLO	L, 3-0
Sept. 2 (S)	at No. 20 Creighton	FLO	L, 3-0
Sept. 3 (Su)	vs. Ball State	FLO	W, 3-1

Sept. 6 (W)	UL-Lafayette	SECN+	W, 3-1
Sept. 10 (Su)	Southeastern La.	SECN+	L, 3-1

##### SMU INVITATIONAL

Sept. 15 (F)	vs. Texas A&M-CC		W, 3-0
Sept. 16 (S)	vs. Texas Tech		W, 3-0
Sept. 17 (Su)	at SMU	ESPN+	L, 3-0

Sept. 22 (F)	at No. 22 Kentucky*	SECN+	L, 3-1
--------------	---------------------	-------	--------

Sept. 29 (F)	Missouri*	SECN+	W, 3-1
Oct. 1 (Su)	Mississippi St.*	SECN	W, 3-1

Oct. 4 (W)	Arkansas*	SECN+	L, 3-0
Oct. 8 (Su)	at Tennessee*	ESPN2	L, 3-0

Oct. 13 (F)	Texas A&M*	SECN	L, 3-1
Oct. 15 (Su)	at Georgia*	SECN+	L, 3-1

Oct. 22 (Su)	at Alabama*	SECN+	W, 3-0
--------------	-------------	-------	--------

Oct. 27 (F)	Kentucky*	SECN	L, 3-0
Oct. 29 (Su)	South Carolina*	SECN+	W, 3-0

Nov. 1 (W)	at Ole Miss*	SECN	L, 3-2
Nov. 5 (Su)	Alabama*	SECN+	1 pm

Nov. 10 (F)	at Florida *	SECN+	6 pm
Nov. 12 (Su)	at South Carolina*	SECN+	1 pm

Nov. 17 (F)	Tennessee*	SECN+	7 pm
Nov. 19 (Su)	at Auburn*	SECN+	2 pm

Nov. 22 (W)	Georgia*	SECN	8 pm
Nov. 25 (Sa)	at Mississippi St.*	SECN+	2 pm

##### Bold Indicates Home

All times are central and subject to change

\* - SEC Match

SECN - SEC Network

SECN+ - SEC Network Plus

FLO - Flosports

/LSUVOLLEYBALL

@LSUVOLLEYBALL

@LSUVOLLEYBALL

@LSUVOLLEYBALL

#### MATCHING UP



##### LSU Tigers

Record	9-12
SEC	4-7
vs. Top-25	0-5
Streak	L1
AVCA Ranking	NR
Head Coach	Tonya Johnson
Record at LSU	25-26
Season	2nd Season
Career Record	110-98
Season	7th Season



##### Alabama Crimson Tide

Record	10-13
SEC	0-12
Streak	L12
AVCA Ranking	NR
Head Coach	Rashinda Reed
Record at Alabama	20-33
Season	2nd Season
Career Record	Same
Season	2nd Season

#### TUNE IN TO THE TIGERS



- Senior Day - BEAT BAMA



- The PMAC  
Baton Rouge, La.



- PxP, Lyn Rollins  
Color, Fran Flory



- Nov. 5, 1 p.m. CT



- SECN+



- lsustats.com

#### TRACKING THE TIGERS

Head coach Tonya Johnson is in her second season leading the program. She is the sixth head coach for the LSU Tigers volleyball program.

Johnson played for the Tigers from 1987-90 and helped the program reach its first Final Four Appearance in 1990. She also served as an assistant coach under predecessor and AVCA Hall of Fame coach Fran Flory.

The LSU Tigers made its 16th appearance in the NCAA Tournament and its first since 2017. With a 3-1 victory over Hawaii, LSU won its first NCAA Tournament match since 2014.

The Tigers ended the 2022 season with a 16-14 overall record, marking their first winning season since 2019.

The Tigers are 6-2 when they win the opening set and 5-0 when winning the first two sets.

LSU fell short of a reverse sweep Wednesday night at Ole Miss. In the setback, Paige Flickinger and Maddie Waak logged double-doubles and Ellie Echter had a career-high in kills.

LSU leads Alabama 42-30 in the all-time series and have won the last four meetings and seven out of the last eight matches.

LSU has a .235 hitting percentage with 12.61 kills per set (971 total), 11.87 assists per set, and 1.44 aces per set (111 total). Defensively, LSU averages 1.94 blocks per set and 13.00 digs per set.

Outside hitter Jurnee Robinson ranks No. 6 in the SEC and No. 4 in the NCAA among NCAA DI freshmen with 3.99 kills per set. She also ranks No. 6 in the SEC with 4.60 points per set thanks to 48 blocks and 16 aces.

Robinson is currently on a six-match streak with three or more blocks and has logged 20 or more kills in four matches this season.

Middle blocker Anita Anwusi paces LSU with 63 blocks (0.82/set) and a .364 hitting percentage that ranks No. 3 in the SEC. Anwusi has 155 kills, averaging 2.01 kills per set. She is four blocks shy of entering the program's top 10 in career blocks.

Setter Maddie Waak ranks No. 10 in the SEC with 8.57 assists per set and leads the Tigers with 2.26 digs per set (174 total) and adds 21 aces.

Setter Emily Mitter logged her 2,000th career assist at Ole Miss and outside hitter Paige Flickinger averages 2.57 kills per set with eight aces in the last three matches.

Also in the last four matches, Ellie Echter has contributed 31 kills (2.21/set) and is coming off a career-high 13 kills at Ole Miss.

Defensive specialist Erin Carmichael ranks No. 32 among active career leaders in NCAA Division I volleyball with 1,614 career digs. Carmichael leads LSU with 23 aces.

Middle blockers Angie Lee and Alexis Roberson have been impactful in their first year on the floor. Lee has 0.92 blocks per set (34 total) and has chipped in 48 kills, while Roberson has 31 kills and 23 blocks (0.96/set) in 24 sets played.

Right side Jade Demps averages 2.00 kills per set (150 total) and has 33 total blocks, nine aces and 130 digs.

The Tigers have five graduate student-athletes on the 2023 roster, including three LSU graduates in Anita Anwusi, Sanaa Dotson and Samarah Hill. In addition to grad transfers Erin Carmichael and Emily Mitter, Paige Flickinger and Alia Williams will be the seven student-athletes honored for Senior Day.

## NUMERICAL ROSTER

NO.	NAME	POS	HT.	CL.-EXP	HOMETOWN (PREVIOUS SCHOOL)
0	Mackenzie Boyer	MB	6-3	Fr.-HS	Austin, Texas (Vandegrift HS)
1	Samarah Hill	OH	6-1	Gr.-3L	Oviedo, Fla. (Trinity Prep School)
2	Paige Flickinger	OH	5-9	Sr.-3L	Roanoke, Texas (Byron Nelson HS)
4	Angie Lee	MB	6-2	Fr.-HS	Long Island, N.Y. (Farmersville HS)
5	Jurnee Robinson	OH	6-1	Fr.-HS	Simpsonville, S.C. (Mauldin HS)
6	Madison Martin	DS/L	5-8	Jr.-2L	Ormond Beach, Fla. (Mt. Carmel Academy)
7	Bri Anderson	OH/DS	5-9	So.-1L	Gainesville, Fla. (Buchholz HS)
8	Ella Hemmings	DS/L	5-6	Fr.-HS	Brownsburg, Ind. (Brownsburg HS)
9	Sanaa Dotson	OH	6-0	Gr.-2L	Houston, Texas (Oklahoma)
10	Erin Carmichael	DS/L	5-7	Gr.-TR	Avon, Ind. (Jacksonville State)
11	Anita Anwusi	MB	6-3	Gr.-4L	Houston, Texas (Alief Hastings HS)
12	Alia Williams	MB	6-1	Sr.-2L	Houston, Texas (Kingwood Park HS)
13	AC Froehlich	OH	6-1	Fr.-HS	Lafayette, La. (St. Thomas More HS)
15	Bri Zamora	DS/L	5-4	So.-1L	League City, Texas (Clear Creek HS)
16	Ellie Echter	RS/OH	6-1	R-So.-1L	Fulshear, Texas (Fulshear HS)
17	Alexis Roberson	MB	6-3	R-Fr.-RS	Missouri City, Texas (Ridge Point HS)
20	Mika Rome	S	5-10	Fr.-HS	Ra'anana, Israel (Mekif HaSharon School)
22	Maddie Waak	S	5-10	So.-1L	Brookshire, Texas (Katy HS)
23	Jade Demps	RS	6-2	Sr.-TR	Raleigh, N.C. (Wisconsin)
29	Emily Mitter	S	5-9	Gr.-TR	Redondo Beach, Calif. (Campbell)

## ALPHABETICAL ROSTER

NO.	NAME	POS	HT.	CL.-EXP	HOMETOWN (PREVIOUS SCHOOL)
7	Bri Anderson	OH/DS	5-9	So.-1L	Gainesville, Fla. (Buchholz HS)
11	Anita Anwusi	MB	6-3	Gr.-4L	Houston, Texas (Alief Hastings HS)
0	Mackenzie Boyer	MB	6-3	Fr.-HS	Austin, Texas (Vandegrift HS)
10	Erin Carmichael	DS/L	5-7	Gr.-TR	Avon, Ind. (Jacksonville State)
23	Jade Demps	RS	6-2	Sr.-TR	Raleigh, N.C. (Wisconsin)
9	Sanaa Dotson	OH	6-0	Gr.-2L	Houston, Texas (Oklahoma)
16	Ellie Echter	RS/OH	6-1	R-So.-1L	Fulshear, Texas (Fulshear HS)
2	Paige Flickinger	OH	5-9	Sr.-3L	Roanoke, Texas (Byron Nelson HS)
13	AC Froehlich	OH	6-1	Fr.-HS	Lafayette, La. (St. Thomas More HS)
8	Ella Hemmings	DS/L	5-6	Fr.-HS	Brownsburg, Ind. (Brownsburg HS)
1	Samarah Hill	OH	6-0	Gr.-3L	Oviedo, Fla. (Trinity Prep School)
4	Angie Lee	MB	6-2	Fr.-HS	Long Island, N.Y. (Farmersville HS)
6	Madison Martin	DS/L	5-8	Jr.-2L	Ormond Beach, Fla. (Mt. Carmel Academy)
29	Emily Mitter	S	5-9	Gr.-TR	Redondo Beach, Calif. (Campbell)
17	Alexis Roberson	MB	6-3	R-Fr.-RS	Missouri City, Texas (Ridge Point HS)
5	Jurnee Robinson	OH	6-1	Fr.-HS	Simpsonville, S.C. (Mauldin HS)
20	Mika Rome	S	5-10	Fr.-HS	Ra'anana, Israel (Mekif HaSharon School)
22	Maddie Waak	S	5-10	So.-1L	Brookshire, Texas (Katy HS)
12	Alia Williams	MB	6-1	Sr.-2L	Houston, Texas (Kingwood Park HS)
15	Bri Zamora	DS/L	5-4	So.-1L	League City, Texas (Clear Creek HS)

## POST MATCH INTERVIEWS

Interviews with players and coaches are done courtside postmatch after the team's 10-minute cooling off period.

For assistance with opposing coaches and players, please contact the opposing school's SID for their postmatch media procedures.

## SEC MEDIA INFORMATION

Jill Skotarczak is the volleyball media relations director for the SEC and can be reached at [205] 458-3000.

Each Monday, the league will name a Player of the Week, a Defensive Player of the Week and a Freshman of the Week.

The SEC Website, SECSports.com, can be accessed 24/7/365 to access updated standings, statistics and notes.

## SPORTS INFORMATION/CREDENTIALS

Keonte' Herrera is the Communications Director for LSU Volleyball and coordinates all media relations duties, including interviews for players and coached. Keonte' can be reached at [254] 338-7609 or by e-mail at kkh@lsu.edu.

All media members are encouraged to apply for season credentials through Keonte'.

Single-game credentials can be picked up 60 minutes prior to match time at the press will call table located at the Northeast Corridor of the Maravich Center.

## WWW.LSUSPORTS.NET

Information about the LSU volleyball, including player bios, game recaps and notes packets are available online at the Official Website of LSU Athletics, www.LSUsports.net.

## COACHING STAFF

<b>Head Coach</b>	Tonya Johnson (LSU, 1993)
<b>Associate Head Coach</b>	Jill Wilson (LSU, 2001)
<b>Assistant Coach</b>	Kevin Inlow (Texas, 2016)
<b>Assistant Coach</b>	Ashley Shook (Texas, 2020)
<b>Director of Ops.</b>	Blaire Hiler (Kentucky, 2011)

## PRONUNCIATION GUIDE

ANITA ANWUSI	Uh-KNEE-tah Ahn-WOO-See
SANAA Dotson	Suh-NAY
Ellie ECHTER	Ek-TUR
Paige FLICKINGER	Flick-in-JER
AC FROEHLICH	FRAY-lick
SAMARAH Hill	Suh-MARE-uh
Alexis ROBERSON	ROW-bur-son
JURNEE Robinson	like journey
MIKA Rome	MEE-cuh
Maddie WAAK	Wok
ALIA Williams	UH-lee-uh
Bri ZAMORA	zuh-MORE-uh

## TEAM INFORMATION

2022 Record	16-14
2022 SEC Record	9-9
2022 Postseason	
	NCAA Tournament 2nd Round
2022 AVCA Final Ranking	NA
Letterwinners Returning/Lost	9/5
Starters Returning/Lost	5/3
Newcomers	9

## PROGRAM HISTORY

All-Time Record	1,048-666 (.611)
All-Time SEC Record	344-269 (.561)
SEC Western Division Titles	7
Seasons	2005-2011
SEC Regular Season Titles	5
Seasons	1986, 1989, 1990, 1991, 2009
SEC Tournament Titles	4
Seasons	1986, 1989, 1990, 1991
NCAA Tournament Record	15-16 (.483)
NCAA Tournament Appearances	16
Seasons	1986-87, 1989-92, 2005-10, 2013-14, 2017, 2022
Final Four Appearances	2 (1990, 1991)

## RESULTS

Final box scores, game-by-game stats, as well as overall stats for the entire season can also be found online at [www.lsusports.net](http://www.lsusports.net).

## PRACTICE TIMES/INTERVIEWS

LSU will hold weekly media availability split between the volleyball practice facility and the main floor of the Pete Maravich Assembly Center. An email will be sent out to the media at the beginning of the week with details of the day, time and location for that week's practice availability. To be added on the media email list, please send a request to Keonte' Herrera at kkh@lsu.edu.

For specific features or longer form interview requests for Coach Johnson or any student-athlete by phone, zoom or in person, please contact Keonte' by phone or email. Requests for interviews must be made at least 24 hours in advance with Keonte'. Please do not contact Coach Johnson or student-athletes directly.

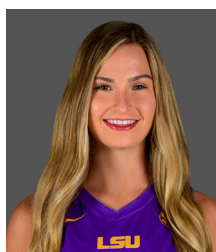
# 2023 TV/Radio Roster



**No. 0 • Mackenzie Boyer**  
MB • 6-3 • Fr.



**No. 1 • Samarah Hill**  
OH • 6-1 • Gr.



**No. 2 • Paige Flickinger**  
OH • 5-9 • Sr.



**No. 4 • Angie Lee**  
MB • 6-2 • Fr.



**No. 5 • Jurnee Robinson**  
OH • 6-1 • Fr.



**No. 6 • Madison Martin**  
DS/L • 5-8 • Jr.



**No. 7 • Bri Anderson**  
DS/L • 5-9 • So.



**No. 8 • Ella Hemmings**  
DS/L • 5-6 • Fr.



**No. 9 • Sanaa Dotson**  
OH • 6-1 • Gr.



**No. 10 • Erin Carmichael**  
DS/L • 5-7 • Gr.



**No. 11 • Anita Anwusi**  
MB • 6-3 • Gr.



**No. 12 • Alia Williams**  
MB • 6-1 • Sr.



**No. 13 • AC Froehlich**  
OH • 6-1 • Fr.



**No. 15 • Bri Zamora**  
DS/L • 5-4 • So.



**No. 16 • Ellie Echter**  
RS/OH • 6-1 • R-So.



**No. 17 • Alexis Roberson**  
MB • 6-3 • R-Fr.



**No. 20 • Mika Rome**  
S • 5-10 • Fr.



**No. 22 • Maddie Waak**  
S • 5-10 • So.



**No. 23 • Jade Demps**  
RS • 6-2 • Sr.



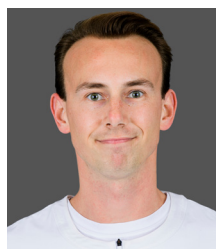
**No. 29 • Emily Mitter**  
S • 5-9 • Gr.



**Tonya Johnson**  
Head Coach  
Second Season



**Jill Wilson**  
Associate Head Coach  
Second Season



**Kevin Inlow**  
Assistant Coach  
Second Season



**Ashley Shook**  
Assistant Coach  
Second Season



**Blaire Hiler**  
Director of Operations  
Seventh Season



AVCA POLL

2023 AVCA/TARAFLEX  
Top 25 Coaches Poll  
(October 30)

Rk.	Team (1st Votes)	Points	Rec.	Prev.
1	Nebraska (63)	1599	21-0	1
2	Wisconsin (1)	1536	20-1	2
3	Louisville	1432	20-2	4
4	Texas	1388	16-3	5
5	Stanford	1361	18-3	3
6	Pittsburgh	1263	20-3	7
7	Oregon	1224	19-4	9
8	Arkansas	1113	20-3	10
9	Washington State	999	18-5	6
10	Georgia Tech	971	19-3	11
11	Tennessee	923	18-3	12
12	BYU	855	18-5	8
13	Kentucky	781	11-7	15
14	Kansas	766	16-4	14
15	Arizona State	651	21-3	21
16	Penn State	635	15-6	13
17	Creighton	591	19-4	17
18	Dayton	551	25-2	18
19	Purdue	463	14-7	16
20	Florida	397	14-5	19
21	Baylor	354	12-9	20
22	Houston	268	12-7	22
23	Western Kentucky	261	22-4	23
24	Auburn	145	17-5	24
25	Marquette	83	15-8	NR

Receiving Votes: Minnesota 35, UCF 24, UC Santa Barbara 12, Kansas State 11, Pepperdine 9, Southern California 8, James Madison 7, Utah State 5, SMU 3, Texas A&M 3

TRACKING THE TIGERS

DATE	AVCA RANKING [VOTES]
Preseason	RV [28]
Week 1: August 28	RV [13]
Week 2: September 4	NR
Week 3: September 11	NR
Week 4: September 18	NR
Week 5: September 25	NR
Week 6: October 2	NR
Week 7: October 9	NR
Week 8: October 16	NR
Week 9: October 23	NR
Week 10: October 30	NR
Week 11: November 6	
Week 12: November 13	
Week 13: November 20	
Week 14: November 27	
Final Poll: December 18	

LAST TIME RANKED	15 [11/29/10]
MOST WEEKS RANKED	24 [09/04/06-10/15/07] [10/12/09-11/29/10]
HIGHEST RANKING	10 [10/02/06, 10/26/06]

YEAR 2

Head coach Tonya Johnson returns for the second season after a hitstorial first season that saw the Tigers reach the NCAA Tournament for the first time since 2017 and win their first postseason match since 2014. Under Johnson's leadership, the Tigers posted a 16-14 record to secure the clubs first winning season since 2019.

As a student-athlete, Johnson helped LSU win a pair of SEC titles and was a member of the first team to reach the Final Four in 1990. She is one of five black head coaches in the Power Five of Division I volleyball (Marci Byers - Virginia Tech, Rashinda Reed - Alabama, Salima Rockwell - Notre Dame and Charita Stubbs - Arizona).

Johnson who played from 1987-1990, served as an assistant coach under Fran Flory from 1998-2002. Prior to her return, The Zachary, La. native was in her second stint at the University of Texas as the associate head coach and recruiting coordinator since 2014. Her two stints at Texas totaled 14 years with the Longhorns. In that time, they captured eight Big 12 titles, advanced to the NCAA Tournament 13 times, reached the Final Four five times, including three appearances in the national championship match and finished the seasons ranked in the top five in seven of the past eight years.

This is Johnson's second stint as a head coach after she compiled an 85-72 record at Georgia Tech from 2009-2013. At Georgia Tech, Johnson coached 10 All-ACC selections, including four-time All-American Monique Mead. Johnson led Georgia Tech to the NCAA Tournament in 2009.

AVCA RANKINGS

The SEC has five teams ranked in the latest AVCA Top 25 rankings, including three teams in the top 15 (No. 8 Arkansas , No. 11 Tennessee, No. 13 Kentucky). Arkansas and Tennessee represent the SEC in the DI Committee's Top 10 Rankings at No. 9 and No. 10, respectively.

LSU currently has an adjusted RPI at No. 63, while Ole Miss enters the week at No. 133.

The Tigers had four teams on their schedule who were ranked in the AVCA preseason poll, including No. 10 Kentucky, No. 11 Florida, No. 18 Creighton and No. 25 Arkansas. Three other teams on the season slate were receiving votes at the inception of the season, including Tennessee (84), Auburn (62) and Georgia (35).

A LOOK BACK

LSU nearly pulled off a reverse sweep at Ole Miss to open the final month of the regular season. Paige Flickinger bagged her first double-double this season with 12 kills and 17 digs in the loss, and Maddie Waak turned in her sixth double-double this year with 33 assists and 14 digs. Ellie Echter also had a big match and finished with a career-best 13 kills.

THE SERIES

LSU swept Alabama on Oct. 22 in Tuscaloosa to improve to 42-30 in the all-time series. The Tigers are on a four-match winning streak in the series and have won seven of the last eight meetings.

TIGER NUMBERS

LSU has a .235 hitting percentage behind 12.61 kills per set (971 total) and averages 11.87 assists and 1.44 aces per set. Defensively, LSU averages 1.94 blocks and 13.00 digs per set. The Tigers have logged 10 or more blocks five times this season.

EXPERIENCED TIGERS

The Tigers return 11 student-athletes from the 2022 roster, including nine players who logged playing time.

Some of the top contibuting Tigers who are returning consist of outside hitter Sanaa Dotson and middle blocker Anita Anwusi who are lisred on the 2023 Preseason All-SEC Team. Other key returners include outside hitter Paige Flickinger, outside hitter Samarah Hill and setter Maddie Waak.

PORTAL REPORTS

LSU picked up key pieces from the transfer protal who look to have immediate impact in the Purple and Gold. The 2020 transfers for LSU includes Erin Carmichael (Jacksonville State), Jade Demps (Wisconsin) and Emily Mitter (Campbell).

THE NEWCOMERS

The Tigers freshman class is a talented bunch. Highlighting the six freshmen are outside hitters Jurnee Robinson and AC Froehlich, and middle blocker Angie Lee. Froehlich is the only member of the 2023 team from the state of Louisiana.

EMBRACE THE JURNEE

Freshman outside hitter Jurnee Robinson ranks No. 6 in the SEC and No. 35 in the NCAA with 3.99 kills per set. Robinson is No. 2 among SEC freshmen (Florida's Kennedy Martin) and ranks No. 4 among NCAA Division I freshmen. Robinson's 4.60 points per set also ranks No. 6 in the SEC.

Robinson has tallied four matches with 20 kills or more and has a .244 hitting percentage, 48 blocks, 16 aces and 130 total digs. She also has four double-doubles this season after recording three consecutive double-doubles versus Texas A&M (Oct. 13), at Georgia (Oct. 15) and at Alabama (Oct. 22).

Robinson has been a force on the block as she has registered three or more blocks in six consecutive matches.

## **ROBINSON EARNS SEC FRESHMAN OF THE WEEK**

Jurnee Robinson won her first career SEC weekly accolade when she was named SEC Freshman of the Week on Aug. 28. Robinson made an immediate impact as she led LSU with 4.60 kills per set behind 46 total kills and a .319 hitting percentage in 10 sets over two matches against UCLA. In her collegiate debut, Robinson landed 23 kills with a .362 hitting percentage and added three blocks and an ace in the five-set win over UCLA. Robinson matched her 23-kill total the next night and secured her first double-double with 10 digs.

## **J5 RESUME**

Robinson was selected to the USA Volleyball NDTP roster. She also led Mauldin High School to the 2022 South Carolina State Championship Title and was tabbed the 2022 Best Player in South Carolina by MaxPrep.

## **A IS FOR ANWUSI**

Middle blocker Anita Anwusi ranks No. 3 in the SEC with a .364 hitting percentage. Anwusi has eight matches this season hitting over .400 and has hit over .600 four times this season, including hitting a season-high .667 three times. Anwusi's .364 hitting percentage currently ranks No. 7 in the program's single-season record book.

Anwusi also paces the Tigers with 63 blocks (0.82/set), including nine solo blocks, and has 155 total kills (2.01/set).

Anwusi was honored as a 2022 AVCA South All-Region Honorable Mention after leading LSU with 1.14 blocks per set (136 total) last season. Anwusi also contributed 221 total kills behind a .289 hitting percentage in 2022.

## **ANWUSI APPROACHING CAREER MARKS**

Anwusi is four blocks shy of breaking into the program's top 10 in career total blocks. Anwusi enters Sunday's match with 409 career blocks and is approaching 1986 AVCA All-American Wendy Stammer's mark at 413 career blocks.

Anwusi is also has a .299 career hitting percentage that would also rank No. 10 all-time.

## **ANWUSI TRAINS WITH USA VOLLEYBALL**

Anwusi was selected to joined the USA Volleyball 2023 Women's Collegiate National Team (CNT) this summer to help train alongside the Women's National Team as they prepare for the Volleyball Nations League.

She became the sixth LSU player in program history to receive the Invitation to join the CNT which was formally known as the U.S. National A2 Program and was the first since 2013.

## **THE SETUP**

Setter Maddie Waak ranks No. 10 in the conference with 8.57 assists per set. Waak also leads the team with 2.26 digs per set (174 total), and has 29 kills, 21 aces and 14 blocks.

Waak logged her 1,000th career assists versus Texas A&M on Oct. 13, 2023.

Waak has tallied six double-doubles in 2023 and has nine total double-doubles in her career.

Waak tallied a career-high 51 assists in the season opener vs. UCLA on Aug. 25, marking the most from a LSU player since Ella Larkin on Nov. 27, 2021 at Georgia. Waak has two matches with 50 or more digs after recording 50 vs. Mississippi St. (Oct. 1).

## **MITTER REACHES 2K ASSISTS**

Setter Emily Mitter turned in her 2,000th career assist at Ole Miss on Nov. 1. Mitter recorded her first double-double as an LSU Tiger after totaling 21 assists and 12 digs at Georgia (Oct. 15). This season, Mitter has 3.76 assists per set (109 total) in 29 sets played.

Mitter's career averages are 4.81 assists per set and 2.03 digs per set (849 total). She also has 83 aces in 117 total matches played.

Last season Mitter finished No. 6 in the Big South with 5.71 assists per set (662 total) with 2.14 digs per set (248 total), 20 aces and four kills.

## **FLICK ON THE LIGHTS**

In the last four matches, outside hitter Paige Flickinger has the second most kills at 36 and is averaging 2.57 kills per set to go along with a team-high eight aces.

The Texas native logged her first double-double with 12 kills and a season-high 17 digs at Ole Miss (Nov. 1). Flickinger also matched a career-high five aces in a single match vs. South Carolina (Oct. 29).

Flickinger landed a season-high 14 kills with a .367 hitting percentage in the sweep at Alabama on Oct. 22.

Overall, Flickinger has 63 kills, 116 digs and 13 aces this season.

## **ECHTER ON A HEATER**

Right side Ellie Echter has totaled 31 kills (2.21/set) and a .319 hitting percentage over the last four matches. She is coming off a career-high 14 kills at Ole Miss (Nov. 1) and .692 hitting percentage in the sweep over South Carolina (Oct. 29).

Echter has 40 kills in 25 sets played this season.

## **ADDED CHAMPIONSHIP PEDIGREE**

Right side Jade Demps is third on the team with 150 total kills (2.00/set) and has 33 blocks, nine aces and 130 digs this season. She has totaled three double-doubles, including a season-high 15 kills with 10 digs vs. UL-Lafayette on Sept. 6.

Demps comes to LSU from Wisconsin with two years of eligibility remaining. With the Badgers, Demps helped the team reach three consecutive NCAA Tournament appearances that featured two Final Four appearances and the 2021 NCAA Division I Volleyball National Championship title.

## **RIGHT ON THE DOT**

Dotson averages 2.18 kills per set (122 total) and has seven aces with 18 blocks.

Dotson was named to the 2022 AVCA South All-Region team for the first time in her career after leading LSU with 3.66 kills per set and had 436 total kills. Dotson also led the club with 25 aces last season and added 49 blocks to average 4.10 points per set. Dotson turned in nine double-doubles in 2022 and logged five 20-kill performances.

## **A CAREER WEEKEND FOR DOTSON**

Outside hitter Sanaa Dotson recorded her 1,000th career kill versus Missouri (Sept. 29) and followed that accolade with a career-high .591 hitting percentage behind a season-high 14 kills in the win over Mississippi St. (Oct. 1).

## **DIGGING CARMICHAEL**

Defensive specialist Erin Carmichael averages 2.06 digs per set (142 total), while also logging a tem-high 23 aces this season.

Carmichael ranks No. 32 among NCAA Division I active career leaders with 1,614 career digs.

Carmichael recorded her second career double-double with 10 digs and 10 assists vs. UL-Lafayette (Sept. 6). She also turned in a single match career-high five aces, highlighted by four consecutive aces in the win vs. Ball State (09/03/23). She was the first to have five aces in a match in 2023 and first since Taylor Bannister and Paige Flickinger did it at Auburn in 2021.

Carmichael is a two-time Ohio Valley Conference (OVC) Champion at Jacksonville State University.

## **FRESHMAN IMPACT**

Redshirt freshman middle blocker Alexis Robinson has made a big impact on the court and has accumulated 31 kills and 23 blocks (0.96/set) in 24 sets played. Roberson recorded a career-high nine kills and match-high five blocks against South Carolina (Oct. 29).

Middle blocker Angie Lee has chipped in 0.92 blocks per set with 34 blocks in 37 sets played. Lee also has 48 kills this season.

## **NEW POSITION FOR NO. 7**

Defensive specialist Bri Anderson is averaging 2.21 digs per set and has 106 total digs in 48 sets played.

Anderson logged a career-high 16 digs at No. 22 Kentucky on Sept. 22 and set a career-high of three aces versus Mississippi State on Oct. 1 while also leading the team with 14 digs.

Anderson was recruited as an outside hitter, but lower body injuries has led her to the defensive specialist position where she is beginning to make her mark at a new position. In high school, Anderson was the 2019 Gainesville Large School Player of the Year.

## **THE EYE OF THE TIGER**

Outside hitter Samarah Hill recorded a season-high nine kills and nine digs in the win over Mississippi St. on Oct. 1.

Hill won the Eye of the Tiger Award and LSU's annual Mikey's Awards Show. The Eye of the Tiger Award is presented to an LSU student-athlete who has overcome great adversity with perseverance, dedication and determination.

Hill returned to the floor in 2022 after dealing with a shoulder injury followed by an achilles tear that kept her sidelined since 2020. Hill finished last season with 119 total kills. She was a member of the 2019 SEC All-Freshman team prior to her injuries.

## **TURN UP THE AC**

Outside hitter AC Froehlich led St. Thomas More High School to the 2022 Louisiana State Championship Title and was selected as the 2022 Louisiana Gatorade Player of the Year.

Froehlich is the only player on the 2023 roster from the state of Louisiana.

## CAREER MILESTONES WATCH

Carmichael	1,614 career digs*
Demps	467 career kills*
Dotson	1,046 career kills*
Flickinger	543 career kills
Hill	445 career kills
Mitter	2,016 career assists*
Mitter	849 career digs*
Waak	1,129 career assists

\* Not all at LSU

## SCHEDULE NOTES

The LSU volleyball team's 28-match regular schedule features 13 home matches, including nine SEC contests. They will play 13 total matches across 10 opponents who were participants in the 2022 NCAA Tournament, including nine matches versus six SEC opponents. LSU will also play six televised SEC matches this season with four of them inside the PMAC.

## CARDIAC TIGERS

LSU opened the 2023 season with a pair of five-set matches that they split against UCLA and are 1-2 in five setters this season. The Tigers played 11 five-set matches in 2022, including 10 times in SEC play. LSU was 7-4 overall in those matches and 7-3 in SEC five setters.

## SOLID FOUNDATION

Last season (2022), LSU secured its first winning season since 2019 when the Tigers finished with an overall 16-14 record in Coach Johnson's first season.

## SEC PRESEASON POLL

LSU was picked sixth in the SEC Preseason Coaches' Poll and accumulated 96 points. Kentucky and Florida, the reigning Co-SEC Champions finished one and two, respectively with 142 and 129 total points. Kentucky claimed 10 first-place votes and Florida picked up two first-place votes. Tennessee rounded out the top three with 113 points and received the final first-place vote.

## SEC Preseason Coaches' Poll

Rank	School	Points
1.	Kentucky (10)	142
2.	Florida (2)	129
3.	Tennessee (1)	113
4.	Georgia	106
5.	Arkansas	101
6.	LSU	96
7.	Auburn	89
8.	Texas A&M	63
9.	Ole Miss	42
	Mississippi St.	42
11.	South Carolina	39
12.	Missouri	30
13.	Alabama	22

## TIGER GRADUATES

LSU has a total of five graduates on the 2023 roster.

Anita Anwusi, Sanaa Dotson and Samarah Hill are all LSU graduates. Anwusi and Dotson recently graduated in May 2023.

Erin Carmichael and Emily Mitter are graduate transfers from Jacksonville State and Campbell, respectively.

## SEASON TICKETS

The excitement is palpable concerning LSU volleyball as season tickets have tripled compared to the 2022 season.

Fans can purchase season tickets at [lsusports.net/tickets/vb/](https://lsusports.net/tickets/vb/) for as low as \$30 for general admission season tickets, \$60 for reserved seating, or purchase the courtside package for \$160.

## 2022 RECAP

LSU posted a 16-14 overall record including a 9-9 mark in SEC play during the 2022 season. The Tigers made their 16th appearance in the NCAA Tournament which was their first since 2017.

LSU Tigers was one of seven teams to represent the SEC in the NCAA Tournament last season and claimed the program's first NCAA Tournament match victory since 2014 after defeating Hawaii 3-1 in the first round.

## THE STAFF

Jill Lytle Wilson, Kevin Inlow and Ashley Shook each enters their second season coaching at LSU.

Coach Wilson, the associate head coach, was the first hire by Coach Johnson and is an LSU alumna. Wilson, then named Lytle, played for the Tigers from 1997-2000 and spent 10 seasons as the assistant, then associate head coach at LSU. Overall while working at LSU, Wilson has helped the Tigers reach seven NCAA Tournament appearances and won the 2009 SEC Championship.

Wilson previously served as the associate head coach at Ohio State for two seasons. She helped the Buckeyes to a 43-10 record, a 30-8 mark in the Big Ten and consecutive NCAA Regional Semifinal appearances. Wilson has been a head coach at Virginia Tech (2017-2020) and has also spent time as an assistant coach at North Carolina (2002-2004) and Wake Forest (2006).

## THE STAFF (CONT.)

Assistant coach Kevin Inlow was previously the lead assistant coach and recruiting coordinator at the University of North Florida for four seasons. Inlow helped guide UNF to four ASUN Championship appearances. Prior to that, he spent six years as the manager and graduate assistant for the University of Texas with Coach Johnson.

Assistant coach Ashley Shook previously served as the volunteer assistant coach in 2022 before being promoted. Prior to beginning her collegiate coaching career, Shook played two seasons of beach volleyball at Washington after playing four years of indoor volleyball at Texas from 2017-2020 as a setter. Shook helped Texas win four Big 12 Championship titles and reached the NCAA Tournament each season, including an appearance in the NCAA National Championship match in 2020.

## NCAA VOLLEYBALL WEEK 1 TOP SHOTS



## NCAA VOLLEYBALL WEEK 9 TOP SHOTS





TIGER TRENDS				SEC STANDINGS		
Overall	9-12	Hitting Below .200	0-5	TEAM	SEC	OVERALL
SEC	4-7	Hitting .200-.249	2-5	Kentucky	10-1	12-7
Non-Conference	5-5	Hitting .250-.299	3-1	Arkansas	10-2	20-4
Home	5-5	Hitting Above .300	4-1	Tennessee	10-2	19-3
Away	1-6	August	1-1	Auburn	7-4	17-5
Neutral	3-1	September	5-5	Texas A&M	7-5	15-7
SEC Home	3-3	October	3-5	Florida	6-5	14-6
SEC Away	1-4	November	0-1	Georgia	6-5	15-8
Non-Conference Home	2-2	December	0-0	Missouri	6-6	14-9
Non-Conference Away	0-2	Monday	0-0	LSU	4-7	9-12
Non-Conference Neutral	3-1	Tuesday	0-0	Mississippi St.	4-8	11-11
Top 10 Opponents	0-0	Wednesday	1-2	Ole Miss	4-9	10-14
Top 25 Opponents	0-5	Thursday	0-0	South Carolina	2-10	8-13
Three-Set Matches	4-6	Friday	3-4	Alabama	0-12	10-13
Four-Set Matches	4-4	Saturday	1-2			
Five-Set Matches	1-2	Sunday	4-4			
Win First Set	6-2	Day Matches	6-5			
Lose First Set	3-9	Night Matches	3-7			
Leading 2-0	5-0	Purple Jerseys	3-3			
Tied 1-1	4-4	Gold Jerseys	3-2			
Trailing 2-0	0-7	White Jerseys	2-4			
Leading 2-1	5-1	Black Jerseys	1-3			
Trailing 2-1	0-5					
Tied 2-2	1-2					

## NCAA Rankings thrus Nov. 2 matches

Statistic	National Rank	Conference Rank	Value	National Leader	Value	Conference Leader	Value
Aces Per Set (332 ranked)	204	8	1.44	Dayton	2.26	Arkansas	2.10
Assists Per Set (332 ranked)	113	8	11.87	Stanford	13.86	Tennessee	13.45
Blocks Per Set (332 ranked)	200	11	1.94	Pittsburgh	3.11	Texas A&M	2.95
Digs Per Set (332 ranked)	272	10	13.00	Rice	19.22	Arkansas	15.02
Hitting Percentage (332 ranked)	84	8	0.235	Pittsburgh	0.315	Tennessee	0.293
Kills Per Set (332 ranked)	143	10	12.61	UNI	14.73	Tennessee	14.70
Match W-L Pctg. (331 ranked)	219	11	0.429	Nebraska	1.000	Tennessee	0.857
Opp Hitting Percentage (332 ranked)	306	13	0.245	Nebraska	0.125	Texas A&M	0.176
Team Assists (332 ranked)	250	9	914	UIC	1,342	Arkansas	1,138
Team Attacks Per Set (332 ranked)	249	9	32.90	Tulsa	39.04	Arkansas	35.34
Team Digs (332 ranked)	298	10	1,001	Oakland	1,787	Ole Miss	1,329
Team Kills (332 ranked)	262	11	971	UIC	1,434	Arkansas	1,210
Team Service Aces (332 ranked)	269	9	111	Bryant	216	Arkansas	183
Team Total Attacks (332 ranked)	293	9	2,533	Oakland	3,846	Ole Miss	3,192
Team Total Blocks (332 ranked)	263	11	149.0	UC Santa Barbara	259.0	Texas A&M	221.5

Statistic	Player	National Rank	Conference Rank	Value	National Leader	Value	Conference Leader	Value
Aces Per Set (149 ranked)					Andrea Tsvetanova, Coppin St.	0.64	Jillian Gillen, Arkansas	0.48
Assists Per Set (150 ranked)	Maddie Waak	142	9	8.57	Kami Miner, Stanford	11.97	Emma Grome, Kentucky	11.80
Attacks Per Set (150 ranked)	Jurnee Robinson	136	6	9.56	Giulia Cardona, Evansville	15.03	Jillian Gillen, Arkansas	10.97
Blocks Per Set (300 ranked)					Ifenna Cos-Okpalla, Texas A&M	1.77	Ifenna Cos-Okpalla, Texas A&M	1.77
Digs Per Set (150 ranked)					Hope Matschner, Iona	6.57	Maya Sands, Missouri	4.80
Hitting Percentage (150 ranked)	Anita Anwusi	68	4	0.364	Courtney Okwara, Buffalo	0.460	Rebecca Walk, Mississippi St.	0.377
Kills Per Set (1461 ranked)	Jurnee Robinson	35	5	3.99	Giulia Cardona, Evansville	5.30	Morgahn Fingall, Tennessee	4.20
	Sanaa Dotson	785	37	2.18				
	Anita Anwusi	900	42	2.01				
	Jade Demps	906	43	2.00				
Kills SG Highs (0 ranked)								
Points (150 ranked)	Jurnee Robinson	116	5	345.0	Giulia Cardona, Evansville	554.5	Sophie Fischer, Georgia	444.5
Points Per Set (150 ranked)	Jurnee Robinson	38	6	4.60	Giulia Cardona, Evansville	6.09	Sophie Fischer, Georgia	5.29
Service Aces (134 ranked)					Camryn Haworth, Indiana	58	Jillian Gillen, Arkansas	42
Total Assists (149 ranked)					Emery Herman, Colorado St.	1,065	Hannah Hogue, Arkansas	990
Total Attacks (149 ranked)					Giulia Cardona, Evansville	1,368	Jillian Gillen, Arkansas	954
Total Blocks (199 ranked)					Reaghan Thompson, Northwestern St.	139	Ifenna Cos-Okpalla, Texas A&M	129
Total Digs (299 ranked)					Hope Matschner, Iona	611	Maya Sands, Missouri	398
Total Kills (150 ranked)	Jurnee Robinson	118	4	299	Giulia Cardona, Evansville	482	Jillian Gillen, Arkansas	358
Triple Doubles (15 ranked)					Jalyn Stout, Coastal Carolina	8		

2023 HONORS & AWARDS

Anita Anwusi  
Preseason All-SEC  
SMU Invitational All-Tournament Team (Sept. 15-17)  
Sanaa Dotson  
Preseason All-SEC  
Jurnee Robinson  
SEC Freshman of the Week (Aug. 28)  
Bluejay Invitational All-Tournament Team (Sept. 1-3)  
SMU Invitational All-Tournament Team (Sept. 15-17)

LAST TIME LSU...

LSU lost the first set in a win  
10/1/23, vs. Mississippi St. [W, 3-1]  
LSU lost the first 2 sets in a win  
11/12/21, at Ole Miss [W, 3-2]  
LSU was down 2-1 in a win  
10/19/22, at Alabama [W, 3-2]  
LSU won the first set in a loss  
9/22/23, at No. 22 Kentucky [L, 3-1]  
LSU won the first 2 sets in a loss  
10/27/17, vs. No. 6 Kentucky [L, 3-2]  
LSU was up 2-1 in a loss  
8/26/23, UCLA [L, 3-2]  
LSU beat a ranked opponent  
9/24/22, at No. 15 Kentucky [W, 3-2]  
LSU beat a ranked opponent at home  
9/21/22, No. 20 Arkansas [W, 3-2]  
LSU beat a ranked opponent on the road  
9/24/22, at No. 15 Kentucky [W, 3-2]  
LSU beat a ranked opponent at a neutral site  
12/6/13, vs. No. 24 Michigan [W, 3-2]  
LSU beat a Top 10 opponent  
11/13/09, at No. 10 Florida [W, 3-1]

HITTING PERCENTAGE  
LSU hit over .400 as a team  
.419 [47-8-93], vs. Missouri [10/6/21]  
LSU hit over .500 as a team  
.524 [51-8-82], vs. Grambling State [9/2/11]  
LSU hit over .500 as a team in a set  
.500 [16-4-24], at Ole Miss [11/1/23]  
LSU's opponent hit over .300 as a team  
.444 [49-9-90], at No. 12 Tennessee [10/8/23]  
LSU held an opponent under .100 hitting  
.092 [25-18-76], vs. South Carolina [10/29/23]  
LSU hit less than .200  
.175 [32-15-97], vs. No. 15 Kentucky [10/29/23]  
LSU hit less than .100  
.080 [39-28-138], at Tennessee [11/06/22]  
LSU hit less than .200 & won  
.135 [58-34-178], at Alabama [10/19/22]  
LSU hit less than .150 & won  
.135 [58-34-178], at Alabama [10/19/22]  
LSU outthit the opponent & lost  
.167-.150, vs. Mississippi State [10/30/22]  
LSU was outthit & won  
.234-.214, at Tennessee [11/24/17]

KILLS  
LSU had 60 + kills 62, at Ole Miss [11/1/23]  
LSU had 80 + kills 80, vs. Ole Miss [10/23/11]

ASSISTS  
LSU had 60 + assists 61, at Ole Miss [11/1/23]  
LSU had 80 + assists 80, at Tennessee [10/12/07]

DIGS  
LSU had 80 + digs 96, vs. Mississippi State [10/29/22]  
LSU hit 100 + digs 108, vs. Mississippi State [10/30/22]

BLOCKS  
LSU had 15-19.5 blocks 15.0, at Alabama [10/19/22]  
LSU had 20 + blocks 20.0, vs. Troy [9/18/21]  
LSU was out-blocked & won 12.0-2.0, vs. Mississippi St. [10/1/23]

ACES  
LSU had 10 + aces 10, vs. South Carolina [10/29/23]

LAST TIME A TIGER...

KILLS  
Five LSU players had 10+ kills Ole Miss [11/7/18]  
Taylor Bannister [22], Toni Rodriguez [16], Whitney Foreman [12], Milan Stokes [11], Olivia Beyer [11]  
Four LSU players had 10+ kills UCLA [8/25/23]  
Jurnee Robinson [23], Jade Demps [14], Anita Anwusi [13], Sanaa Dotson [12]  
Three LSU players had 15+ kills at Tennessee [11/24/17]  
Taylor Bannister [16], Jacqui Armer [15], Toni Rodriguez [15]  
No LSU players had 10+ kills at No. 12 Tennessee [10/8/23]  
An LSU player had 20 or more kills Jurnee Robinson [21] at Georgia [10/15/23]  
An LSU player had 25 or more kills Taylor Bannister [29] at Georgia [11/27/21]  
An LSU player had 30 or more kills Taylor Bannister [30] vs. Georgia [03/19/21]  
An LSU player had 40 or more kills Monique Adams [43], No. 10 Florida [12/14/91]  
An LSU player had 20 + kills and 20 + digs Angela Bensed [20 kills, 26 digs], at TCU [09/03/10]  
An LSU player had back-to-back double-doubles Jurnee Robinson  
21 kills, 10 digs [at Georgia 10/15/23]; 10 kills, 12 digs [at Alabama 10/22/23]  
An LSU player had 5 straight double-doubles Ella Larkin  
[5; 2021 Season] 44 assists, 18 digs [at Ole Miss, 11/11/21];  
49 assists, 18 digs [at Ole Miss, 11/12/21]; 39 assists, 10 digs [Texas A&M, 11/21/21]  
45 assists, 14 digs [at Georgia, 11/26/21]; 51 assists, 11 digs [at Georgia, 11/27/21]  
An LSU player had a triple-double Malorie Pardo  
40 assists, 11 digs, 10 kills, vs. South Florida [08/29/14]

ATTEMPTS  
An LSU player had 50 or more attempts Sanaa Dotson [51], at Missouri [11/12/22]  
An LSU player had 60 or more attempts Sanaa Dotson [66], vs. Mississippi State [10/30/22]  
An LSU player had 70 or more attempts Taylor Bannister [71], at Texas A&M [10/18/20]

HITTING PERCENTAGE [10 OR MORE ATTEMPTS]  
An LSU player had a .400 hitting percentage Ellie Echter [7-1-14, .429], at Alabama [10/22/23]  
An LSU player had a .500 hitting percentage Paige Flickinger [6-0-12, .500], vs. South Carolina [10/29/23]  
An LSU player had a .600 hitting percentage Ellie Echter [9-0-13, .692], vs. South Carolina [10/29/23]  
An LSU player had a .700 hitting percentage Anita Anwusi [8-1-10, .700], at Mississippi State [10/2/21]  
An LSU player had an .800 hitting percentage Malorie Pardo [10-0-12, .833] vs. South Florida [8/29/14]  
An LSU player had a .900 hitting percentage Allee Morris [10-0-11, .909], vs. Texas A&M [11/21/21]

ASSISTS  
An LSU player had 50 or more assists Maddie Waak [50], Mississippi St. [10/1/23]  
An LSU player had 60 or more assists Lindsay Flory [60], vs. South Carolina [11/18/18]  
An LSU player had 70 or more assists Daniela Romero [74], at No. 13 Tennessee [09/15/06]  
An LSU player had 80+ assists Lauren O'Connor [84], at Mississippi State [11/08/98]  
Two LSU players had 20+ assists Maddie Waak [27] & Emily Mitter [21], at Georgia [10/15/23]

DIGS  
Five LSU players had 10 + digs vs. Mississippi State [10/30/22]  
Ella Larkin [31], Jill Bohnet [21], Paige Flickinger [18], Maddie Waak [17], Sanaa Dotson [12]  
Three LSU players had 15 + digs vs. Mississippi State [10/30/22] (4)  
Ella Larkin [31], Jill Bohnet [21], Paige Flickinger [18], Maddie Waak [17]  
Two LSU players had 20 + digs Ella Larkin [31], Jill Bohnet [21] vs. Mississippi State [10/30/22]  
An LSU player recorded 20-24 digs Maddie Waak [20], vs. ULL [9/6/23]  
An LSU player recorded 25-29 digs Jill Bohnet [26], Ella Larkin [22], vs. Mississippi State [10/29/22]  
An LSU player recorded 30-39 digs Ella Larkin [31], vs. Mississippi State [10/30/22]  
An LSU player recorded 40 + digs Meghan Mannari [40], at Auburn [10/19/12]

BLOCKS  
An LSU player had 7-9 blocks Anita Anwusi [7], at Georgia [10/15/23]  
An LSU player had 10 + blocks Whitney Foreman [10], vs. Sam Houston State [9/11/21]  
An LSU player had 4 solo blocks Sydney Mukes [4], at Ole Miss [10/7/18]  
An LSU player had 5 + solo blocks Ivana Kuzmic [6], Houston [11/27/04]

ACES  
An LSU player had 5 aces Paige Flickinger [5], vs. South Carolina [10/29/23]  
An LSU player had 6 aces Ella Larkin [6], at No. 15 Florida [10/8/22]  
An LSU player had 7 + aces Kylie DeBerg [7], vs. Texas A&M [11/21/21]  
An LSU player had 10 + aces Wendy Stammer [10], Texas Tech [09/14/86]  
Three LSU players had multiple aces Robinson [3], Anderson [2], Dotson [2], at Georgia [10/15/23]  
Five LSU players had multiple aces Carmichael [5], Demps [3], Flickinger [2], Robinson [2],  
Waak [2], vs. Ball State [9/3/23]

LSU had 0 aces as a team at No. 12 Tennessee [10/8/23]







# 2023 TEAM COMPARISON

Date	Opponent	Score	Kills	Errors	TA	Hit%	Assists	SA	SE	RE	Digs	Blocks	BS	BA	BE	BHE
08/25/2023	UCLA	3-2	66/53	22/20	140/120	.314/.275	63/51	8/8	13/11	8/8	45/43	12.0/11.0	5/2	14/18	0/1	0/1
08/26/2023	UCLA	2-3	56/55	27/14	148/141	.196/.291	53/49	12/6	6/15	6/12	64/52	7.0/10.0	2/2	10/16	1/3	3/1
09/01/2023	UNI	0-3	45/56	10/13	115/116	.304/.371	42/48	1/5	6/3	5/1	41/54	6.0/5.0	1/2	10/6	7/1	0/2
09/02/2023	Creighton	0-3	36/57	16/14	117/113	.171/.381	34/53	6/2	7/7	2/6	35/52	6.0/7.0	1/1	10/12	3/1	0/0
09/03/2023	Ball St.	3-1	52/36	19/20	124/111	.266/.144	49/33	15/5	14/7	5/15	51/43	9.0/12.0	2/4	14/16	3/5	1/0
09/06/2023	Louisiana	3-1	56/33	21/25	129/121	.271/.066	54/31	5/4	8/6	4/5	59/45	6.0/5.0	3/0	6/10	2/2	0/1
09/10/2023	Southeastern La.	1-3	62/58	20/13	155/140	.271/.321	57/56	2/1	13/6	1/2	61/64	7.0/9.0	0/0	14/18	3/0	0/2
09/15/2023	A&M-Corpus Christi	3-0	33/25	8/22	78/83	.321/.036	28/24	5/1	9/9	1/5	28/34	4.0/1.0	1/0	6/2	3/0	0/2
09/16/2023	Texas Tech	3-0	46/29	10/19	111/107	.324/.093	44/29	2/1	10/7	1/2	56/41	4.0/3.0	0/0	8/6	2/1	0/0
09/17/2023	SMU	0-3	36/44	16/11	100/101	.200/.327	33/38	1/5	6/8	5/1	42/41	3.0/5.0	1/1	4/8	0/2	2/0
09/22/2023	Kentucky	1-3	40/64	22/20	133/131	.135/.336	35/56	2/4	7/16	4/2	42/51	11.0/8.0	2/1	18/14	2/2	0/0
09/29/2023	Missouri	3-1	43/43	17/25	125/133	.208/.135	39/40	7/5	14/14	5/7	59/57	12.0/8.0	2/4	20/8	3/3	0/6
10/01/2023	Mississippi St.	3-1	57/41	26/16	136/131	.228/.191	57/37	6/4	14/9	4/6	65/48	2.0/12.0	0/3	4/18	2/1	1/4
10/04/2023	Arkansas	0-3	40/45	15/9	110/105	.227/.343	40/41	5/6	9/4	6/5	50/50	3.0/7.0	0/3	6/8	0/3	0/1
10/08/2023	Tennessee	0-3	28/49	11/9	80/90	.213/.444	26/45	0/5	9/8	5/0	26/36	4.0/6.0	2/1	4/10	0/1	0/0
10/13/2023	Texas A&M	1-3	43/50	25/20	144/131	.125/.229	40/48	9/4	12/10	4/9	55/60	10.0/11.0	0/1	20/20	3/0	0/1
10/15/2023	Georgia	1-3	55/57	23/22	146/143	.219/.245	53/56	3/7	13/12	7/3	52/59	11.0/11.0	5/2	12/18	5/0	0/1
10/22/2023	Alabama	3-0	44/38	17/18	100/103	.270/.194	41/36	4/1	5/8	1/4	44/34	8.0/4.0	2/2	12/4	2/0	2/1
10/27/2023	Kentucky	0-3	32/44	15/16	97/112	.175/.250	29/40	5/7	8/5	7/5	32/41	8.0/4.0	1/0	14/8	0/1	1/2
10/29/2023	South Carolina	3-0	39/25	11/18	86/76	.326/.092	36/22	10/3	9/5	3/10	30/27	7.0/2.0	1/1	12/2	0/0	0/1
11/01/2023	Ole Miss	2-3	62/64	26/18	159/155	.226/.297	61/58	3/7	10/12	7/3	64/58	9.0/12.0	5/6	8/12	5/2	0/0

Note: Match totals are displayed in the format TEAM/OPPONENT for each category





# 2023 OPPONENT MATCH-BY-MATCH

		Attack					Set			Serve				Recept			Blocking								
Date	Opponent	SP	K	E	TA	PCT	A	TA	PCT	SA	SE	TA	PCT	RE	TA	PCT	DIG	BS	BA	BE	TOTAL	BHE	POINTS	SCORE	
08/25/2023	UCLA	5	53	20	120	.275	51	131	.389	8	11	99	.889	8	92	.913	43	2	18	1	11.0	1	72.0	3-2	
08/26/2023	UCLA	5	55	14	141	.291	49	135	.363	6	15	97	.845	12	94	.872	52	2	16	3	10.0	1	71.0	2-3	
09/01/2023	vsUNI	3	56	13	116	.371	48	113	.425	5	3	77	.961	1	61	.984	54	2	6	1	5.0	2	66.0	0-3	
09/02/2023	at Creighton	3	57	14	113	.381	53	109	.486	2	7	80	.913	6	58	.897	52	1	12	1	7.0	0	66.0	0-3	
09/03/2023	vsBall St.	4	36	20	111	.144	33	112	.295	5	7	76	.908	15	79	.810	43	4	16	5	12.0	0	53.0	3-1	
09/06/2023	Louisiana	4	33	25	121	.066	31	139	.223	4	6	67	.910	5	86	.942	45	0	10	2	5.0	1	42.0	3-1	
09/10/2023	Southeastern La.	4	58	13	140	.321	56	146	.384	1	6	94	.936	2	73	.973	64	0	18	0	9.0	2	68.0	1-3	
09/15/2023	vsA&M-Corpus Christi	3	25	22	83	.036	24	90	.267	1	9	46	.804	5	64	.922	34	0	2	0	1.0	2	27.0	3-0	
09/16/2023	vsTexas Tech	3	29	19	107	.093	29	100	.290	1	7	54	.870	2	63	.968	41	0	6	1	3.0	0	33.0	3-0	
09/17/2023	at SMU	3	44	11	101	.327	38	92	.413	5	8	74	.892	1	51	.980	41	1	8	2	5.0	0	54.0	0-3	
09/22/2023	at Kentucky	4	64	20	131	.336	56	123	.455	4	16	97	.835	2	72	.972	51	1	14	2	8.0	0	76.0	1-3	
09/29/2023	Missouri	4	43	25	133	.135	40	140	.286	5	14	81	.827	7	80	.913	57	4	8	3	8.0	6	56.0	3-1	
10/01/2023	Mississippi St.	4	41	16	131	.191	37	134	.276	4	9	88	.898	6	79	.924	48	3	18	1	12.0	4	57.0	3-1	
10/04/2023	Arkansas	3	45	9	105	.343	41	101	.406	6	4	74	.946	5	51	.902	50	3	8	3	7.0	1	58.0	0-3	
10/08/2023	at Tennessee	3	49	9	90	.444	45	86	.523	5	8	73	.890	0	38	1.000	36	1	10	1	6.0	0	60.0	0-3	
10/13/2023	Texas A&M	4	50	20	131	.229	48	134	.358	4	10	90	.889	9	74	.878	60	1	20	0	11.0	1	65.0	1-3	
10/15/2023	at Georgia	4	57	22	143	.245	56	145	.386	7	12	100	.880	3	81	.963	59	2	18	0	11.0	1	75.0	1-3	
10/22/2023	at Alabama	3	38	18	103	.194	36	101	.356	1	8	65	.877	4	69	.942	34	2	4	0	4.0	1	43.0	3-0	
10/27/2023	Kentucky	3	44	16	112	.250	40	112	.357	7	5	74	.932	5	54	.907	41	0	8	1	4.0	2	55.0	0-3	
10/29/2023	South Carolina	3	25	18	76	.092	22	83	.265	3	5	52	.904	10	64	.844	27	1	2	0	2.0	1	30.0	3-0	
11/01/2023	at Ole Miss	5	64	18	155	.297	58	154	.377	7	12	109	.890	3	87	.966	58	6	12	2	12.0	0	83.0	2-3	
Opponent totals		77	966	362	2463	.245	891	2480	.359	91	182	1667	.891	111	1470	.924	990	36	234	29	153.0	26	1210.0		
LSU totals		77	971	377	2533	.235	914	2538	.360	111	202	1672	.879	91	1485	.939	1001	36	226	46	149.0	10	1231.0		

## Team Averages

Sets Played	Kills per set	Assists per set	Service aces per set	Digs per set	Blocks per set	Points per set	Ball handling error per set	Reception errors per set
77	12.55	11.57	1.18	12.86	1.99	15.71	0.34	1.44

# 2023 CATEGORY LEADERS

## Attack (by PCT)

#	Player	S	K	K/S	E	TA	PCT
11	Anwusi, Anita	77	155	2.01	43	308	.364
7	Anderson, Bri	48	1	0.02	0	3	.333
22	Waak, Maddie	77	29	0.38	9	71	.282
16	Echter, Ellie	25	40	1.60	13	97	.278
17	Roberson, Alexis	24	31	1.29	10	82	.256
5	Robinson, Jurnee	75	299	3.99	124	717	.244
4	Lee, Angie	37	48	1.30	21	120	.225
23	Demps, Jade	75	150	2.00	61	444	.200
9	Dotson, Sanaa	56	122	2.18	48	381	.194
2	Flickinger, Paige	56	63	1.13	29	196	.173
1	Hill, Samarah	18	23	1.28	13	74	.135
12	Williams, Alia	16	10	0.63	6	36	.111
10	Carmichael, Erin	69	0	0.00	0	2	.000
29	Mitter, Emily	29	0	0.00	0	2	.000
6	Martin, Madison	1	0	0.00	0	0	.000
8	Hemmings, Ella	54	0	0.00	0	0	.000
13	Froehlich, AC	4	0	0.00	0	0	.000

## Kill (by K)

#	Player	S	K	K/S
5	Robinson, Jurnee	75	299	3.99
11	Anwusi, Anita	77	155	2.01
23	Demps, Jade	75	150	2.00
9	Dotson, Sanaa	56	122	2.18
2	Flickinger, Paige	56	63	1.13
4	Lee, Angie	37	48	1.30
16	Echter, Ellie	25	40	1.60
17	Roberson, Alexis	24	31	1.29
22	Waak, Maddie	77	29	0.38
1	Hill, Samarah	18	23	1.28
12	Williams, Alia	16	10	0.63
7	Anderson, Bri	48	1	0.02
10	Carmichael, Erin	69	0	0.00
29	Mitter, Emily	29	0	0.00
6	Martin, Madison	1	0	0.00
8	Hemmings, Ella	54	0	0.00
13	Froehlich, AC	4	0	0.00

## Set (by A/S)

#	Player	S	A	A/S	TA	PCT
22	Waak, Maddie	77	660	8.57	1688	.387
29	Mitter, Emily	29	109	3.76	316	.332
10	Carmichael, Erin	69	66	0.96	184	.348
7	Anderson, Bri	48	22	0.46	97	.216
23	Demps, Jade	75	22	0.29	55	.400
8	Hemmings, Ella	54	8	0.15	38	.158
2	Flickinger, Paige	56	8	0.14	29	.276
1	Hill, Samarah	18	2	0.11	12	.167
9	Dotson, Sanaa	56	6	0.11	32	.125
5	Robinson, Jurnee	75	6	0.08	50	.100
12	Williams, Alia	16	1	0.06	2	.500
17	Roberson, Alexis	24	1	0.04	10	.100
11	Anwusi, Anita	77	3	0.04	18	.167
4	Lee, Angie	37	0	0.00	4	-.250
16	Echter, Ellie	25	0	0.00	3	.000
6	Martin, Madison	1	0	0.00	0	.000
13	Froehlich, AC	4	0	0.00	0	.000

## Serve (by SA/S)

#	Player	S	SA	SE	SA/S	TA	PCT
10	Carmichael, Erin	69	23	35	0.33	251	.861
22	Waak, Maddie	77	21	25	0.27	314	.920
13	Froehlich, AC	4	1	1	0.25	12	.917
2	Flickinger, Paige	56	13	15	0.23	191	.921
8	Hemmings, Ella	54	12	10	0.22	170	.941
5	Robinson, Jurnee	75	16	39	0.21	227	.828
7	Anderson, Bri	48	6	21	0.13	116	.819
9	Dotson, Sanaa	56	7	17	0.13	90	.811
23	Demps, Jade	75	9	16	0.12	150	.893
12	Williams, Alia	16	1	2	0.06	7	.714
29	Mitter, Emily	29	1	6	0.03	87	.931
11	Anwusi, Anita	77	1	12	0.01	36	.667
1	Hill, Samarah	18	0	2	0.00	16	.875
17	Roberson, Alexis	24	0	0	0.00	0	.000
4	Lee, Angie	37	0	0	0.00	0	.000
16	Echter, Ellie	25	0	1	0.00	5	.800
6	Martin, Madison	1	0	0	0.00	0	.000



# 2023 CATEGORY LEADERS

## Block (by BLK/S)

#	Player	S	BS	BA	TOTAL	BLK/S
17	Roberson, Alexis	24	3	20	23.0	0.96
4	Lee, Angie	37	4	30	34.0	0.92
11	Anwusi, Anita	77	9	54	63.0	0.82
12	Williams, Alia	16	2	9	11.0	0.69
5	Robinson, Jurnee	75	12	36	48.0	0.64
23	Demps, Jade	75	1	32	33.0	0.44
16	Echter, Ellie	25	1	8	9.0	0.36
9	Dotson, Sanaa	56	1	17	18.0	0.32
1	Hill, Samarah	18	0	4	4.0	0.22
22	Waak, Maddie	77	1	13	14.0	0.18
2	Flickinger, Paige	56	2	3	5.0	0.09
10	Carmichael, Erin	69	0	0	0.0	0.00
13	Froehlich, AC	4	0	0	0.0	0.00
8	Hemmings, Ella	54	0	0	0.0	0.00
7	Anderson, Bri	48	0	0	0.0	0.00
29	Mitter, Emily	29	0	0	0.0	0.00
6	Martin, Madison	1	0	0	0.0	0.00

## Defense (by DIG/S)

#	Player	S	DIG	DIG/S	BHE
22	Waak, Maddie	77	174	2.26	5
7	Anderson, Bri	48	106	2.21	0
2	Flickinger, Paige	56	116	2.07	0
10	Carmichael, Erin	69	142	2.06	0
5	Robinson, Jurnee	75	130	1.73	2
23	Demps, Jade	75	130	1.73	1
29	Mitter, Emily	29	39	1.34	0
1	Hill, Samarah	18	24	1.33	0
13	Froehlich, AC	4	4	1.00	0
9	Dotson, Sanaa	56	55	0.98	0
16	Echter, Ellie	25	14	0.56	0
8	Hemmings, Ella	54	24	0.44	0
12	Williams, Alia	16	6	0.38	0
4	Lee, Angie	37	13	0.35	0
17	Roberson, Alexis	24	6	0.25	1
11	Anwusi, Anita	77	18	0.23	1
6	Martin, Madison	1	0	0.00	0

## Points (by POINTS/S)

#	Player	S	POINTS	POINTS/S
5	Robinson, Jurnee	75	345.0	4.60
11	Anwusi, Anita	77	192.0	2.49
9	Dotson, Sanaa	56	138.5	2.47
23	Demps, Jade	75	176.0	2.35
17	Roberson, Alexis	24	44.0	1.83
4	Lee, Angie	37	67.0	1.81
16	Echter, Ellie	25	45.0	1.80
2	Flickinger, Paige	56	79.5	1.42
1	Hill, Samarah	18	25.0	1.39
12	Williams, Alia	16	17.5	1.09
22	Waak, Maddie	77	57.5	0.75
10	Carmichael, Erin	69	23.0	0.33
13	Froehlich, AC	4	1.0	0.25
8	Hemmings, Ella	54	12.0	0.22
7	Anderson, Bri	48	7.0	0.15
29	Mitter, Emily	29	1.0	0.03
6	Martin, Madison	1	0.0	0.00

## Receptions (by PCT)

#	Player	S	RE	RE/S	TA	PCT
11	Anwusi, Anita	77	0	0.00	5	1.000
4	Lee, Angie	37	0	0.00	1	1.000
22	Waak, Maddie	77	0	0.00	3	1.000
29	Mitter, Emily	29	0	0.00	2	1.000
1	Hill, Samarah	18	1	0.06	32	.969
10	Carmichael, Erin	69	9	0.13	274	.967
7	Anderson, Bri	48	7	0.15	191	.963
2	Flickinger, Paige	56	9	0.16	232	.961
23	Demps, Jade	75	9	0.12	191	.953
5	Robinson, Jurnee	75	17	0.23	326	.948
16	Echter, Ellie	25	2	0.08	30	.933
9	Dotson, Sanaa	56	13	0.23	174	.925
17	Roberson, Alexis	24	0	0.00	0	.000
12	Williams, Alia	16	0	0.00	0	.000
13	Froehlich, AC	4	0	0.00	0	.000
8	Hemmings, Ella	54	0	0.00	0	.000
6	Martin, Madison	1	0	0.00	0	.000
TM	TEAM	-	24	0.31	-	-

# INDIVIDUAL CAREER DOUBLE-DOUBLES

## ERIN CARMICHAEL [2]

11/13/22 10 assists, 15 digs at Austin Peay\*  
**9/6/23 10 assists, 10 digs vs. UL-Lafayette**

## JADE DEMPS [5]

11/19/21 12 kills, 14 digs vs. Michigan State\*  
 11/21/21 18 kills, 16 digs at Minnesota\*  
**8/25/23 14 kills, 10 digs vs. UCLA**  
**9/6/23 15 kills, 10 digs vs. UL-Lafayette**  
**10/1/23 11 kills, 12 digs vs. Mississippi St.**

## SANAA DOTSON [11]

3/26/21 13 kills, 12 digs vs. TCU\*  
 3/27/21 26 kills, 12 digs vs. TCU\*  
 8/26/22 15 kills, 11 digs vs. Samford  
 9/3/22 13 kills, 15 digs vs. No. 21 Penn St.  
 9/21/22 20 kills, 12 digs vs. No. 20 Arkansas  
 10/1/22 16 kills, 13 digs vs. Ole Miss  
 10/5/22 22 kills, 13 digs vs. Auburn  
 10/8/22 15 kills, 10 digs at No. 15 Florida  
 10/19/22 18 kills, 14 digs at Alabama  
 10/30/22 18 kills, 12 digs vs. Mississippi St.  
 12/2/22 16 kills, 18 digs vs. Hawai'i

## PAIGE FLICKINGER [18]

10/22/20 11 kills, 12 digs vs. Mississippi St.  
 11/15/20 10 kills, 16 digs at Alabama  
 1/29/21 11 kills, 23 digs at Missouri  
 1/30/21 14 kills, 12 digs at Missouri  
 2/28/21 11 kills, 13 digs vs. Ole Miss  
 3/13/21 10 kills, 15 digs vs. South Carolina  
 3/20/21 14 kills, 21 digs vs. Georgia  
 9/21/22 15 kills, 17 digs vs. No. 20 Arkansas  
 9/24/22 14 kills, 14 digs at No. 15 Kentucky  
 10/5/22 11 kills, 11 digs vs. Auburn  
 10/9/22 15 kills, 12 digs at No. 15 Florida  
 10/19/22 16 kills, 13 digs at Alabama  
 10/29/22 17 kills, 14 digs vs. Mississippi St.  
 11/12/22 16 kills, 19 digs at Missouri  
 11/16/22 13 kills, 10 digs at Texas A&M  
 11/26/22 11 kills, 10 digs vs. Georgia  
 12/2/22 11 kills, 10 digs vs. Hawai'i  
**11/1/23 12 kills, 17 digs at Ole Miss**

## SAMARAH HILL [7]

8/31/19 11 kills, 16 digs vs. Arizona St.  
 9/8/19 18 kills, 11 digs at Iowa St.  
 11/3/19 17 kills, 15 digs vs. Mississippi St.  
 11/6/19 12 kills, 14 digs vs. Auburn  
 10/18/20 12 kills, 14 digs at Texas A&M  
 10/21/20 10 kills, 12 digs vs. Mississippi St.  
 10/22/20 11 kills, 12 digs vs. Mississippi St.

## EMILY MITTER [30]

9/7/19 27 assists, 16 digs at N.C. Central\*  
 9/13/19 18 assists, 12 digs vs. North Dakota\*  
 9/14/19 12 assists, 10 digs vs. The Citadel\*  
 9/20/19 15 assists, 10 digs vs. UMBC\*  
 9/21/19 20 assists, 11 digs vs. Oakland\*  
 10/26/19 10 assists, 14 digs vs. Hampton\*  
 11/15/19 23 assists, 11 digs at UNC Asheville\*  
 2/28/21 18 assists, 15 digs at Winthrop\*  
 3/11/21 17 assists, 11 digs at Gardner-Webb\*  
 4/2/21 16 assists, 10 digs vs. Radford\*  
 9/10/21 26 assists, 11 digs vs. Florida A&M\*  
 9/11/21 28 assists, 13 digs vs. Davidson\*  
 9/17/21 27 assists, 14 digs vs. UNC Greensboro\*  
 9/25/21 14 assists, 10 digs at Presbyterian\*  
 10/8/21 25 assists, 12 digs at High Point\*  
 10/9/21 18 assists, 15 digs at N.C. A&T\*  
 10/12/21 14 assists, 12 digs vs. Winthrop\*  
 10/19/21 24 assists, 11 digs at Hampton\*  
 10/29/21 26 assists, 16 digs vs. N.C. A&T\*  
 11/5/21 25 assists, 11 digs at USC Upstate\*  
 11/21/21 23 assists, 13 digs at High Point\*  
 9/30/22 24 assists, 15 digs vs. Presbyterian\*  
 10/6/22 16 assists, 10 digs at Radford\*  
 10/8/22 25 assists, 15 digs vs. High Point\*  
 10/20/22 27 assists, 10 digs vs. Charleston Southern\*  
 10/21/22 32 assists, 11 digs vs. Gardner-Webb\*  
 11/3/22 23 assists, 13 digs at High Point\*  
 11/5/22 36 assists, 14 digs vs. Radford\*  
 11/20/22 16 assists, 14 digs vs. High Point\*  
**10/15/23 21 assists, 12 digs at Georgia**

## JURNEE ROBINSON [4]

**8/26/23 23 kills, 10 digs vs. UCLA**  
**10/13/23 14 kills, 17 digs vs. Texas A&M**  
**10/15/23 21 kills, 10 digs at Georgia**  
**10/22/23 10 kills, 12 digs at Alabama**

## MADDIE WAAK [9]

10/19/22 39 assists, 10 digs at Alabama  
 10/29/22 21 assists, 12 digs vs. Mississippi St.  
 10/30/22 21 assists, 17 digs vs. Mississippi St.  
**8/25/23 51 assists, 11 digs vs. UCLA**  
**9/6/23 42 assists, 20 digs vs. UL-Lafayette**  
**9/17/23 25 assists, 14 digs at SMU**  
**9/29/23 32 assists, 17 digs vs. Missouri**  
**10/4/23 31 assists, 10 digs vs. No. 13 Arkansas**  
**11/1/23 33 assists, 14 digs at Ole Miss**

**Bold indicates double-doubles this season**

\* Carmichael's double-double at Jacksonville State

\* Demps' double-doubles at Wisconsin

\* Dotson's double-doubles at Oklahoma

\* Mitter's double-doubles at Campbell

# TIGER FINDINGS: PLAYER FACTS

## **BRI ANDERSON** SERVING SONG: Big 7 - Burna Boy

Aspires to be a dentist...is an avid reader...if she could, she would love to meet Ida B. Wells or Henritetta Lacks...favorite type of animals are wolves...father Neal Anderson played college football at Florida and professional football with the Chicago Bears.

## **ANITA ANWUSI** SERVING SONG: Did It On Em - Nicki Minaj

Desires an occupation as a pediatric physical therapist...the top item on her bucket list is to meet Nicki Minaj...her favorite type of animals are dolphins and koala bears...one interesting fact about her is that she can crochet...was selected to the 2023 Women's Collegiate National Team.

## **MACKENZIE BOYER** SERVING SONG: Life Goes On - Lil Baby

Wants a career in media marketing...Would love to live in Europe...desired to be on TV...would have loved to meet Amelia Earhart who is the first woman to fly solo across the Atlantic Ocean...before playing volleyball, Boyer was a swimmer...father, Brad Boyer played basketball at Air Force.

## **ERIN CARMICHAEL** SERVING SONG: Doses and Mimosas - Cherub

Wants to work as a medical sales representative...would have liked to meet Kobe Bryant...has a twin sister named Elise who played volleyball at Tusculum University as a setter...two-time Ohio Valley Conference Champion at Jacksonville State.

## **JADE DEMPS** SERVING SONG: Pump It - Black Eyed Peas

Wants to be a veterinarian...attended Broughton High School in North Carolina, the same high school as Pete Maravich...surprisingly on her bucket list, she wants to steal the Declaration of Independence (inspired by movie National Treasure?)...wants to meet the comedy duo Rhett and Link...the Golden Tiger is her favorite animal...was a member of Wisconsin's 2021 National Championship team...mother Keisha Demps and father Thomas Demps III played volleyball and football at Arizona.

## **SANAA DOTSON** SERVING SONG: Southside - Lil Keke

Aspires to be a sports public relations representative or sports analyst...secretly, she wants to be an actress...bucket list items include learning how to ski, learning how to do a backflip, and meeting Drake...transferred from Oklahoma for the 2021 season...father Santana Dotson played 11 years as a defensive tackle in the NFL and won Super Bowl XXXI with the Green Bay Packers.

## **ELLIE ECHTER** SERVING SONG: Run This Town - Jay-Z

Wants to explore the business world and live anywhere in Texas...desires to visit the Wonders of the World and travel to the Alafi Coast...if she could, she would meet Elvis Presley...use to play in a trash can band in 4th and 5th grade.

## **PAIGE FLICKINGER** SERVING SONG: Superhero - Metro Boomin

Aspires to work as a cyber security analyst...as a person fascinated by the tech world, would have loved to speak to Steve Jobs first hand and hear his journey on creating Apple.

## **AC FROELICH** SERVING SONG: The Show Goes On - Lupe Fiasco

Another aspiring veterinarian...would like to meet Taylor Swift...is the only Louisiana native on the team...was a member of St. Thomas Moore High School 2022 State Championship team.

## **ELLA HEMMINGS** SERVING SONG: Superhero - Metro Boomin

Wants to live in New Zealand or Greece...would love to meet Rihanna...favorite type of animal is an elephant...does not like many fruit aside from grapes and apples.

## **SAMARAH HILL** SERVING SONG: No Flockin - Kodak Black

Desires to work in HR for a corporate company...wants to meet Australian actor Jacob Elordi...use to be a competitive cheerleader...returned to the floor in 2022 after suffering two injuries that kept her out of the lineup since 2020...both parents, Sarah and Isaac Hill, ran track at Arkansas State.

## **ANGIE LEE** SERVING SONG: Pardon Me - Lil Yachty, Future

Wants to be a software engineer or software developer at a space station...her favorite snack is brownie brittle...wants to learn how to swim but don't ask her to jump off the diving board, she has a fear of heights...helped lead Farmersville High School in Texas to a 2022 Area Championship title.

## **MADISON MARTIN** SERVING SONG: Til I Collapse - Eminem

Aspires to become a doctor specializing in oncology or dermatology...currently celebrating her mother's eight-year cancer free anniversary...she use to travel the country and compete in synchronized swimming...is also a spanish minor.

## **EMILY MITTER** SERVING SONG: Drowning - A Boogie Wit Da Hoodie

Wants a career as a marine conservationist...would love to meet freediver and model Ocean Ramsey...top item on her bucket list is to freedive with sharks which is her favorite type of fish or elasmobranch...father Todd Mitter played and coached baseball at Illinois.

## **ALEXIS ROBERSON** SERVING SONG: Bottoms Up - Trey Songz

Pursing a career as a market research analyst...has spent a full year in Louisiana and still has eating an oyster on her bucket list...desires to stay awake for a full 24 hours...wants to meet Michele Obama...has a sock collection.

## **JURNEE ROBINSON** SERVING SONG: Fish Scale - NBA Youngboy

Wants to own her own business surrounding athletic wear...loves to be around toddlers...favorite type of animals are dolphins...wants to meet Beyonce...led Mauldin High School to a 2022 South Carolina state title and tabbed the 2022 Best Player in South Carolina by MaxPrep...father, Jonathan Robinson played football at Presbyterian College.

## **MIKA ROME** SERVING SONG: Dance The Night - Dua Lipa

Has an interest in engineering new medicine...from Israel and played for the Israeli National Team...has also served in the Israeli Defense Forces...favorite type of animal is a Tiger...her brother Segev is the Israeli Junior Champion in squash.

## **MADDIE WAAK** SERVING SONG: Shoota - Playboi Carti

Wants to be a political analysts...would have liked to meet Franklin D. Roosevelt...desires to visit Spain...father Nick Waak played baseball at Lassen JC and Centenary College; drafted by the Cleveland Indians in 1997...mother played softball at Centenary College.

## **ALIA WILLIAMS** SERVING SONG: It Was A Good Day - Ice Cube

Wants to be a marketing manager...would like to meet Serena Williams...has a hairless cat...father Fred Williams played basketball at Louisiana College.

## **BRI ZAMORA** SERVING SONG: It Was A Good Day - Ice Cube

Wants to be an orthopedic surgeon or biomedical engineer...would like to meet John Wooden and Valerie Kondos Field...had a three-month figure skating career...wants to see the northern lights and climb a mountain.





# MACKENZIE BOYER

0

Middle Blocker · 6-3 · Freshman · HS · Austin, Texas (Vandegrift HS)

## SEASON HIGHS

Kills	NA
Attacks	NA
Hit % (Min. 10 att)	NA
Assists	NA
Aces	NA
Digs	NA
Total Blocks	NA
Block Solos	NA
Block Assists	NA

## CAREER HIGHS

Kills	NA
Attacks	NA
Hit % (Min. 10 att)	NA
Assists	NA
Aces	NA
Digs	NA
Total Blocks	NA
Block Solos	NA
Block Assists	NA

## [Complete bio](#)

### Freshman Season (2023)

- Ranked No. 29 in the state of Texas in 2021 with 132 total blocks.
- Helped Vandegrift win its district in 2021 with a 39-10 record and placed 5th in the State Tournament.

## 2023 SEASON MATCH-BY-MATCH

## BOYER'S CAREER STATS



# SAMARAH HILL

1

Outside Hitter • 6-1 • Graduate • 3L • Oviedo, Fla. (Trinity Prep School)

## SEASON HIGHS

Kills	9 vs. Mississippi St. (10/1/23)
Attacks	31 vs. Mississippi St. (10/1/23)
Hit % (Min. 10 att)	.250 at No. 22 Kentucky (09/22/23)
Assists	1 vs. Mississippi St. (10/1/23) vs. UCLA (08/26/23)
Aces	NA
Digs	9 vs. Mississippi St. (10/1/23)
Total Blocks	1, Four Times
Block Solos	NA
Block Assists	1, Four Times

## CAREER HIGHS

Kills	20 vs. Texas A&M (11/10/19)
Attacks	56 at Iowa St. (09/08/19)
Assists	4 at Milwaukee (09/09/22)
Hit % (Min. 10 att)	.524 vs. Ole Miss (09/30/22)
Aces	5 vs. Alabama (10/18/19)
Digs	18 vs. Florida (10/20/19)
Total Blocks	5 at Alabama (11/24/19)
Block Solos	3 at Alabama (11/24/19)
Block Assists	4, Four times

## Complete bio

### Graduate Season (2023)

- Had season-highs of nine kills and nine digs vs. Mississippi St. (Oct. 1).
- Returned to the floor in 2022 after suffering a shoulder injury (2020) and achilles injury (2021).
- Averaged 2.16 points per set last season behind 119 kills, 20 blocks and four aces.
- Was a 2019 SEC All-Freshman Team Selection.

## 2023 SEASON MATCH-BY-MATCH

Date	Opponent	SP	Attack				Set			Serve				Recept			Blocking				Team				
			K	E	TA	PCT	A	TA	PCT	SA	SE	TA	PCT	RE	TA	PCT	DIG	BS	BA	BE	TOTAL	BHE	POINTS	HIT%	SCORE
08/26/2023	UCLA	1	0	0	2	.000	1	2	.500	0	0	1	1.000	0	6	1.000	2	0	0	0	0.0	0	0.0	.196	2-3
09/02/2023	at Creighton	2	3	1	9	.222	0	1	.000	0	0	0	.000	0	0	.000	1	0	1	1	1.0	0	3.5	.171	0-3
09/03/2023	vs Ball St.	1	1	1	4	.000	0	0	.000	0	0	0	.000	0	0	.000	0	0	0	0	0.0	0	1.0	.266	3-1
09/10/2023	Southeastern La.	1	2	0	2	1.000	0	0	.000	0	0	1	1.000	0	3	1.000	2	0	1	0	1.0	0	2.5	.271	1-3
09/22/2023	at Kentucky	3	4	1	12	.250	0	2	.000	0	0	3	1.000	1	11	.909	3	0	0	0	0.0	0	4.0	.135	1-3
09/29/2023	Missouri	2	1	0	5	.200	0	3	.000	0	0	4	1.000	0	2	1.000	5	0	1	0	1.0	0	1.5	.208	3-1
10/01/2023	Mississippi St.	3	9	8	31	.032	1	2	.500	0	2	7	.714	0	5	1.000	9	0	1	0	1.0	0	9.5	.228	3-1
10/08/2023	at Tennessee	2	0	2	5	-.400	0	1	.000	0	0	0	.000	0	5	1.000	2	0	0	0	0.0	0	0.0	.213	0-3
10/27/2023	Kentucky	3	3	0	4	.750	0	1	.000	0	0	0	.000	0	0	.000	0	0	0	0	0.0	0	3.0	.175	0-3
Totals		18	23	13	74	.135	2	12	.167	0	2	16	.875	1	32	.969	24	0	4	1	4.0	0	25.0		

### Player Averages

Sets Played	Kills per set	Assists per set	Service aces per set	Digs per set	Blocks per set	Points per set
18	1.28	0.11	0.00	1.33	0.22	1.39

## HILL'S CAREER STATS

SEASON	TEAM	SM-MP	K	K/S	E	TA	PCT	A	A/S	SA	SA/S	SE	DIG	D/S	RE	BS	BA	TB	B/S	BE	BHE	PTS	PTS/S
2019-20	LSU	101-28	262	2.59	92	804	.211	15	0.15	15	0.15	28	243	2.41	26	12	31	43	0.43	6	0	304.5	3.01
2020-21	LSU	16-4	41	2.56	19	125	.176	1	0.06	7	0.44	4	45	2.81	3	1	7	8	0.50	0	0	52.5	3.28
2022-23	LSU	62-22	119	1.92	49	370	.189	6	0.10	4	0.06	5	68	1.10	13	2	18	20	0.32	4	0	134.0	2.16
2023-24	LSU	18-9	23	1.28	13	74	.135	2	0.11	0	0.00	2	24	1.33	1	0	4	4	0.22	1	0	25.0	1.39
TOTAL		197 - 63	445	2.26	173	1373	.198	24	0.12	26	0.13	39	380	1.93	43	15	60	75	0.38	11	0	516.0	2.62





# ANGIE LEE

# 4

Middle Blocker • 6-2 • Freshman • HS • Long Island, N.Y. (Farmersville HS)

## SEASON HIGHS

Kills	8 vs. Missouri (09/29/23)
Attacks	16 vs. Missouri (09/29/23)
Hit % (Min. 10 att)	.385 vs. A&M-Corpus Christi (09/15/23)
Assists	NA
Aces	NA
Digs	4 vs. No. 13 Arkansas (10/4/23)
Total Blocks	6 at No. 22 Kentucky (09/22/23) vs. Ball State (09/03/23)
Block Solos	1, Four Times
Block Assists	6 vs. Ball State (09/03/23)

## CAREER HIGHS

Kills	8 vs. Missouri (09/29/23)
Attacks	16 vs. Missouri (09/29/23)
Hit % (Min. 10 att)	.385 vs. A&M-Corpus Christi (09/15/23)
Assists	NA
Aces	NA
Digs	4 vs. No. 13 Arkansas (10/4/23)
Total Blocks	6 at No. 22 Kentucky (09/22/23) vs. Ball State (09/03/23)
Block Solos	1, Four Times
Block Assists	6 vs. Ball State (09/03/23)

## Complete bio

### Freshman Season (2023)

- Leads the team with 0.92 blocks per set behind 34 total blocks.
- Logged a season-high eight kills vs. Mississippi St. (Oct. 1) and hit .714 at SMU on Sept. 17 (5-0-7).
- Registered four kills and a team-high six blocks in her collegiate debut vs. Ball State (Sept. 3).
- Led Farmersville High School to a 2022 Area Championship title.
- Was the 2021-22 District MVP and 2020-21 Defensive Player of the Year.
- Set a program record in high school with a .433 hitting percentage.

## 2023 SEASON MATCH-BY-MATCH

		Attack				Set		Serve				Recept		Blocking				Team							
Date	Opponent	SP	K	E	TA	PCT	A	TA	PCT	SA	SE	TA	PCT	RE	TA	PCT	DIG	BS	BA	BE	TOTAL	BHE	POINTS	HIT%	SCORE
09/03/2023	vs Ball St.	*4	4	5	15	.067	0	0	.000	0	0	0	.000	0	0	.000	2	0	6	0	6.0	0	7.0	.266	3-1
09/06/2023	Louisiana	*4	5	1	9	.444	0	0	.000	0	0	0	.000	0	0	.000	1	1	3	0	4.0	0	7.5	.271	3-1
09/10/2023	Southeastern La.	*4	3	2	14	.071	0	0	.000	0	0	0	.000	0	0	.000	0	0	5	1	5.0	0	5.5	.271	1-3
09/15/2023	vs A&M-Corpus Christi	*3	7	2	13	.385	0	3	.000	0	0	0	.000	0	0	.000	1	0	1	0	1.0	0	7.5	.321	3-0
09/16/2023	vs Texas Tech	*3	5	1	12	.333	0	0	.000	0	0	0	.000	0	0	.000	1	0	2	1	2.0	0	6.0	.324	3-0
09/17/2023	at SMU	*3	5	0	7	.714	0	1	.000	0	0	0	.000	0	1	1.000	0	1	0	0	1.0	0	6.0	.200	0-3
09/22/2023	at Kentucky	*4	3	2	12	.083	0	0	.000	0	0	0	.000	0	0	.000	2	1	5	0	6.0	0	6.5	.135	1-3
09/29/2023	Missouri	*4	8	2	16	.375	0	0	.000	0	0	0	.000	0	0	.000	2	1	4	1	5.0	0	11.0	.208	3-1
10/01/2023	Mississippi St.	*4	3	2	10	.100	0	0	.000	0	0	0	.000	0	0	.000	0	0	1	0	1.0	0	3.5	.228	3-1
10/04/2023	Arkansas	*3	2	2	7	.000	0	0	.000	0	0	0	.000	0	0	.000	4	0	3	0	3.0	0	3.5	.227	0-3
10/08/2023	at Tennessee	*1	3	2	5	.200	0	0	.000	0	0	0	.000	0	0	.000	0	0	0	0	0.0	0	3.0	.213	0-3
Totals		37	48	21	120	.225	0	4	.000	0	0	0	.000	0	1	1.000	13	4	30	3	34.0	0	67.0		

### Player Averages

Sets Played	Kills per set	Assists per set	Service aces per set	Digs per set	Blocks per set	Points per set
37	1.30	0.00	0.00	0.35	0.92	1.81

## LEE'S CAREER STATS

SEASON	TEAM	SM-MP	K	K/S	E	TA	PCT	A	A/S	SA	SA/S	SE	DIG	D/S	RE	BS	BA	TB	B/S	BE	BHE	PTS	PTS/S
2023-24	LSU	37-11	48	1.30	21	120	.225	0	0.00	0	0.00	0	13	0.35	0	4	30	34	0.92	3	0	67.0	1.81
TOTAL		37 - 11	48	1.30	21	120	.225	0	0.00	0	0.00	0	13	0.35	0	4	30	34	0.92	3	0	67.0	1.81







# MADISON MARTIN

6

Defensive Specialist/Libero • 5-8 • Junior • 2L • Ormond Beach, Fla. (Mt. Carmel Academy)

### SEASON HIGHS

Kills	NA
Attacks	NA
Hit % (Min. 10 att)	NA
Assists	NA
Aces	NA
Digs	NA
Total Blocks	NA
Block Solos	NA
Block Assists	NA

### CAREER HIGHS

Kills	NA
Attacks	NA
Assists	1 at Ole Miss (11/12/21)
Hit % (Min. 10 att)	NA
Aces	3 vs. Sam Houston (09/11/21)
Digs	3 at Texas A&M (11/16/22)
Total Blocks	NA
Block Solos	NA
Block Assists	NA

### Complete bio

#### Junior Season (2023)

- Logged three aces in a single match against Sam Houston State in 2021.
- Was named to the 2022 SEC Fall Academic Honor Roll.

### 2023 SEASON MATCH-BY-MATCH

		Attack				Set			Serve				Recept			Blocking				Team					
Date	Opponent	SP	K	E	TA	PCT	A	TA	PCT	SA	SE	TA	PCT	RE	TA	PCT	DIG	BS	BA	BE	TOTAL	BHE	POINTS	HIT%	SCORE
08/25/2023	UCLA	1	0	0	0	.000	0	0	.000	0	0	0	.000	0	0	.000	0	0	0	0	0.0	0	0.0	.314	3-2
Totals		1	0	0	0	.000	0	0	.000	0	0	0	.000	0	0	.000	0	0	0	0	0.0	0	0.0		

#### Player Averages

Sets Played	Kills per set	Assists per set	Service aces per set	Digs per set	Blocks per set	Points per set
1	0.00	0.00	0.00	0.00	0.00	0.00

### MARTIN'S CAREER STATS

SEASON	TEAM	SM-MP	K	K/S	E	TA	PCT	A	A/S	SA	SA/S	SE	DIG	D/S	RE	BS	BA	TB	B/S	BE	BHE	PTS	PTS/S
2021-22	LSU	31-12	0	0.00	0	0	.000	1	0.03	3	0.10	2	7	0.23	0	0	0	0	0.00	0	0	3.0	0.10
2022-23	LSU	15-5	0	0.00	0	0	.000	0	0.00	1	0.07	1	6	0.40	0	0	0	0	0.00	0	0	1.0	0.07
2023-24	LSU	1-1	0	0.00	0	0	.000	0	0.00	0	0.00	0	0	0.00	0	0	0	0	0.00	0	0	0.0	0.00
TOTAL		47 - 18	0	0.00	0	0	.000	1	0.02	4	0.09	3	13	0.28	0	0	0	0	0.00	0	0	4.0	0.09



# BRI ANDERSON

7

Defensive Specialist/Libero • 5-9 • Sophomore • 1L • Gainesville, Fla. (Buchholz HS)

## SEASON HIGHS

Kills	1 vs. Missouri (09/29/23)
Attacks	2 vs. Missouri (09/29/23)
Hit % (Min. 10 att)	NA
Assists	5 vs. Missouri (09/29/23)
Aces	3 vs. Mississippi St. (10/1/23)
Digs	16 at No. 22 Kentucky (09/22/23)
Total Blocks	NA
Block Solos	NA
Block Assists	NA

## CAREER HIGHS

Kills	1 vs. Missouri (09/29/23)
Attacks	2 vs. Missouri (09/29/23)
Hit % (Min. 10 att)	NA
Assists	5 vs. Missouri (09/29/23)
Aces	3 vs. Mississippi St. (10/1/23)
Digs	16 at No. 22 Kentucky (09/22/23)
Total Blocks	NA
Block Solos	NA
Block Assists	NA

## Complete bio

### Sophomore Season (2023)

- Served a career-high three aces vs. Mississippi St. on Oct. 1.
- Registered a career-high 16 digs at No. 22 Kentucky on Sept. 22.
- Totaled two aces in her collegiate debut against Samford in 2022.
- Was the 2019 Gainesville Large School Player of the Year.
- Father, Neal Anderson played college football at Florida and in the NFL for the Chicago Bears.

## 2023 SEASON MATCH-BY-MATCH

Date	Opponent	SP	Attack			Set			Serve			Recept			Blocking				Team						
			K	E	TA	PCT	A	TA	PCT	SA	SE	TA	PCT	RE	TA	PCT	DIG	BS	BA	BE	TOTAL	BHE	POINTS	HIT%	SCORE
09/01/2023	vs UNI	2	0	0	0	.000	0	1	.000	0	1	7	.857	2	17	.882	7	0	0	0	0.0	0	0.0	.304	0-3
09/03/2023	vs Ball St.	3	0	0	0	.000	0	1	.000	0	0	0	.000	0	8	1.000	6	0	0	0	0.0	0	0.0	.266	3-1
09/06/2023	Louisiana	4	0	0	0	.000	1	2	.500	0	0	0	.000	0	13	1.000	6	0	0	0	0.0	0	0.0	.271	3-1
09/10/2023	Southeastern La.	4	0	0	0	.000	1	7	.143	0	0	0	.000	0	10	1.000	6	0	0	0	0.0	0	0.0	.271	1-3
09/15/2023	vs A&M-Corpus Christi	3	0	0	1	.000	1	1	1.000	0	2	8	.750	0	6	1.000	1	0	0	0	0.0	0	0.0	.321	3-0
09/16/2023	vs Texas Tech	3	0	0	0	.000	0	2	.000	0	2	2	.000	0	7	1.000	4	0	0	0	0.0	0	0.0	.324	3-0
09/17/2023	at SMU	*3	0	0	0	.000	1	3	.333	0	0	1	1.000	0	7	1.000	7	0	0	0	0.0	0	0.0	.200	0-3
09/22/2023	at Kentucky	4	0	0	0	.000	0	10	.000	0	4	20	.800	1	19	.947	16	0	0	0	0.0	0	0.0	.135	1-3
09/29/2023	Missouri	4	1	0	2	.500	5	13	.385	0	3	12	.750	0	9	1.000	12	0	0	0	0.0	0	1.0	.208	3-1
10/01/2023	Mississippi St.	4	0	0	0	.000	4	10	.400	3	3	20	.850	1	21	.952	14	0	0	0	0.0	0	3.0	.228	3-1
10/04/2023	Arkansas	3	0	0	0	.000	2	10	.200	0	1	7	.857	1	18	.944	8	0	0	0	0.0	0	0.0	.227	0-3
10/08/2023	at Tennessee	3	0	0	0	.000	2	6	.333	0	2	7	.714	0	13	1.000	2	0	0	0	0.0	0	0.0	.213	0-3
10/13/2023	Texas A&M	4	0	0	0	.000	2	14	.143	2	2	14	.857	1	23	.957	8	0	0	0	0.0	0	2.0	.125	1-3
10/15/2023	at Georgia	4	0	0	0	.000	3	17	.176	1	1	18	.944	1	20	.950	9	0	0	0	0.0	0	1.0	.219	1-3
Totals		48	1	0	3	.333	22	97	.227	6	21	116	.819	7	191	.963	106	0	0	0	0.0	0	7.0		

### Player Averages

Sets Played	Kills per set	Assists per set	Service aces per set	Digs per set	Blocks per set	Points per set
48	0.02	0.46	0.13	2.21	0.00	0.15

## ANDERSON'S CAREER STATS

SEASON	TEAM	SM-MP	K	K/S	E	TA	PCT	A	A/S	SA	SA/S	SE	DIG	D/S	RE	BS	BA	TB	B/S	BE	BHE	PTS	PTS/S
2022-23	LSU	12-6	0	0.00	0	0	.000	1	0.08	4	0.33	6	2	0.17	0	0	0	0	0.00	0	0	4.0	0.33
2023-24	LSU	48-14	1	0.02	0	3	.333	22	0.46	6	0.13	21	106	2.21	7	0	0	0	0.00	0	0	7.0	0.15
TOTAL		60 - 20	1	0.02	0	3	.333	23	0.38	10	0.17	27	108	1.80	7	0	0	0	0.00	0	0	11.0	0.18



# ELLA HEMMINGS

# 8

Defensive Specialist/Libero • 5-6 • Freshman • HS • Brownsburg, Ind. (Brownsburg HS)

## SEASON HIGHS

Kills	NA
Attacks	NA
Hit % (Min. 10 att)	NA
Assists	2 vs. UCLA (08/25/23)
Aces	2 at No. 22 Kentucky (09/22/23) vs. UCLA (08/26/23)
Digs	3 vs. Missouri (09/29/23)
Total Blocks	NA
Block Solos	NA
Block Assists	NA

## CAREER HIGHS

Kills	NA
Attacks	NA
Hit % (Min. 10 att)	NA
Assists	2 vs. UCLA (08/25/23)
Aces	2 at No. 22 Kentucky (09/22/23) vs. UCLA (08/26/23)
Digs	3 vs. Missouri (09/29/23)
Total Blocks	NA
Block Solos	NA
Block Assists	NA

## Complete bio

### Freshman Season (2023)

- Has 12 aces in 2023, including two matches with multiple aces.
- A four-year letterwinner for Brownsburg High School.
- Named Best Libero by Prep Volleyball.
- Totaled 1,943 career digs in high school and averaged 4.60 digs per set.

## 2023 SEASON MATCH-BY-MATCH

		Attack				Set			Serve			Recept			Blocking				Team					
Date	Opponent	SP	K	E	TA	PCT	A	TA	PCT	SA	SE	TA	PCT	RE	TA	PCT	DIG	BS	BA	BE	TOTAL	BHE	POINTS	HIT% SCORE
08/25/2023	UCLA	5	0	0	0	.000	2	5	.400	1	1	18	.944	0	0	.000	2	0	0	0	0.0	0	1.0	.314 3-2
08/26/2023	UCLA	5	0	0	0	.000	0	3	.000	2	0	14	1.000	0	0	.000	1	0	0	0	0.0	0	2.0	.196 2-3
09/01/2023	vs UNI	3	0	0	0	.000	1	4	.250	1	0	17	1.000	0	0	.000	1	0	0	0	0.0	0	1.0	.304 0-3
09/02/2023	at Creighton	2	0	0	0	.000	1	1	1.000	0	0	5	1.000	0	0	.000	1	0	0	0	0.0	0	0.0	.171 0-3
09/03/2023	vs Ball St.	3	0	0	0	.000	1	7	.143	1	1	14	.929	0	0	.000	2	0	0	0	0.0	0	1.0	.266 3-1
09/06/2023	Louisiana	4	0	0	0	.000	1	2	.500	1	0	11	1.000	0	0	.000	2	0	0	0	0.0	0	1.0	.271 3-1
09/15/2023	vs A&M-Corpus Christi	3	0	0	0	.000	0	3	.000	1	1	8	.875	0	0	.000	1	0	0	0	0.0	0	1.0	.321 3-0
09/16/2023	vs Texas Tech	3	0	0	0	.000	0	2	.000	0	2	14	.857	0	0	.000	2	0	0	0	0.0	0	0.0	.324 3-0
09/17/2023	at SMU	3	0	0	0	.000	0	3	.000	1	1	12	.917	0	0	.000	0	0	0	0	0.0	0	1.0	.200 0-3
09/22/2023	at Kentucky	4	0	0	0	.000	1	1	1.000	2	0	11	1.000	0	0	.000	1	0	0	0	0.0	0	2.0	.135 1-3
09/29/2023	Missouri	3	0	0	0	.000	0	2	.000	0	0	6	1.000	0	0	.000	3	0	0	0	0.0	0	0.0	.208 3-1
10/01/2023	Mississippi St.	1	0	0	0	.000	0	0	.000	0	0	2	1.000	0	0	.000	2	0	0	0	0.0	0	0.0	.228 3-1
10/04/2023	Arkansas	1	0	0	0	.000	0	1	.000	0	0	0	.000	0	0	.000	1	0	0	0	0.0	0	0.0	.227 0-3
10/22/2023	at Alabama	3	0	0	0	.000	1	1	1.000	1	1	8	.875	0	0	.000	0	0	0	0	0.0	0	1.0	.270 3-0
10/27/2023	Kentucky	3	0	0	0	.000	0	1	.000	0	0	7	1.000	0	0	.000	1	0	0	0	0.0	0	0.0	.175 0-3
10/29/2023	South Carolina	3	0	0	0	.000	0	1	.000	1	2	13	.846	0	0	.000	2	0	0	0	0.0	0	1.0	.326 3-0
11/01/2023	at Ole Miss	5	0	0	0	.000	0	1	.000	0	1	10	.900	0	0	.000	2	0	0	0	0.0	0	0.0	.226 2-3
Totals		54	0	0	0	.000	8	38	.211	12	10	170	.941	0	0	.000	24	0	0	0	0.0	0	12.0	

### Player Averages

Sets Played	Kills per set	Assists per set	Service aces per set	Digs per set	Blocks per set	Points per set
54	0.00	0.15	0.22	0.44	0.00	0.22

## HEMMINGS' CAREER STATS

SEASON	TEAM	SM-MP	K	K/S	E	TA	PCT	A	A/S	SA	SA/S	SE	DIG	D/S	RE	BS	BA	TB	B/S	BE	BHE	PTS	PTS/S
2023-24	LSU	54-17	0	0.00	0	0	.000	8	0.15	12	0.22	10	24	0.44	0	0	0	0	0.00	0	0	12.0	0.22
TOTAL		54 - 17	0	0.00	0	0	.000	8	0.15	12	0.22	10	24	0.44	0	0	0	0	0.00	0	0	12.0	0.22











# ALIA WILLIAMS

12

Middle Block • 6-1 • Senior • 2L • Houston, Texas (Kingwood Park HS)

## SEASON HIGHS

Kills	5 vs. UCLA (08/26/23)
Attacks	12 vs. UCLA (08/26/23)
Hit % (Min. 10 att)	.250 vs. UCLA (08/26/23)
Assists	1 vs. UCLA (08/26/23)
Aces	1 at No. 20 Creighton (09/02/23)
Digs	2 at No. 20 Creighton (09/02/23) vs. UCLA (08/26/23)
Total Blocks	3, Three Times
Block Solos	1 vs. UNI (09/01/23) vs. UCLA (08/26/23)
Block Assists	3 at No. 20 Creighton (09/02/23) vs. UCLA (08/25/23)

## CAREER HIGHS

Kills	14 at No. 15 Florida (10/08/22)
Attacks	27 vs. Mississippi St. (10/29/22)
Hit % (Min. 10 att)	.583 at No. 23 Marquette (09/10/22) at Milwaukee (09/09/22)
Assists	20 at Tennessee (03/25/21)
Aces	2 at Missouri (01/30/21)
Digs	6 at Missouri (01/30/21)
Total Blocks	7 vs. Hawai'i (12/02/22)
Block Solos	2 at Tennessee (11/06/22) at No. 15 Kentucky (09/25/22)
Block Assists	7 vs. Hawai'i (12/02/22)

## Complete bio

### Senior Season (2023)

- Hit a career-high .583 in back-to-back matches at Milwaukee and No. 23 Marquette last season (Sept. 9-10).
- Logged a career-best 14 kills at No. 15 Florida (Oct. 8) and two solo blocks at No. 15 Kentucky (Sept. 25) and at Tennessee (Nov. 6).
- Recorded a career-high seven blocks in the NCAA Tournament victory over Hawai'i (Dec. 2).
- Has seen playing time at the middle blocker and setter position for the Tigers.

### 2023 SEASON MATCH-BY-MATCH

Date	Opponent	SP	Attack				Set		Serve				Recept			Blocking				Team						
			K	E	TA	PCT	A	TA	PCT	SA	SE	TA	PCT	RE	TA	PCT	DIG	BS	BA	BE	TOTAL	BHE	POINTS	HIT%	SCORE	
08/25/2023	UCLA	*5	2	3	7	.143	0	0	.000	0	0	0	.000	0	0	.000	1	0	3	0	3.0	0	3.5	.314	3-2	
08/26/2023	UCLA	*5	5	2	12	.250	1	1	1.000	0	0	0	.000	0	0	.000	2	1	1	0	2.0	0	6.5	.196	2-3	
09/01/2023	vs UNI	*3	2	1	10	.100	0	0	.000	0	0	0	.000	0	0	.000	1	1	2	2	3.0	0	4.0	.304	0-3	
09/02/2023	at Creighton	*3	1	0	7	.143	0	1	.000	1	2	7	.714	0	0	.000	2	0	3	0	3.0	0	3.5	.171	0-3	
Totals			16	10	6	.36	.111	1	2	.500	1	2	7	.714	0	0	.000	6	2	9	2	11.0	0	17.5		

#### Player Averages

Sets Played	Kills per set	Assists per set	Service aces per set	Digs per set	Blocks per set	Points per set
16	0.63	0.06	0.06	0.38	0.69	1.09

## WILLIAMS' CAREER STATS

SEASON	TEAM	SM-MP	K	K/S	E	TA	PCT	A	A/S	SA	SA/S	SE	DIG	D/S	RE	BS	BA	TB	B/S	BE	BHE	PTS	PTS/S
2020-21	LSU	32-15	23	0.72	8	73	.205	20	0.63	4	0.13	6	13	0.41	0	2	14	16	0.50	2	1	36.0	1.13
2021-22	LSU	1-1	0	0.00	0	0	.000	2	2.00	0	0.00	0	0	0.00	0	0	0	0	0.00	0	0	0.0	0.00
2022-23	LSU	119-30	164	1.38	58	409	.259	5	0.04	7	0.06	31	49	0.41	2	12	87	99	0.83	5	1	226.5	1.90
2023-24	LSU	16-4	10	0.63	6	36	.111	1	0.06	1	0.06	2	6	0.38	0	2	9	11	0.69	2	0	17.5	1.09
TOTAL			168	1.17	72	518	.241	28	0.17	12	0.07	39	68	0.40	2	16	110	126	0.75	9	2	280.0	1.67





# AC FROEHLICH

# 13

Outside Hitter • 6-1 • Freshman • HS • Lafayette, La. (St. Thomas HS)

## SEASON HIGHS

Kills	NA
Attacks	NA
Hit % (Min. 10 att)	NA
Assists	NA
Aces	1 vs. Southeastern La. (09/10/23)
Digs	4 vs. Southeastern La. (09/10/23)
Total Blocks	NA
Block Solos	NA
Block Assists	NA

## CAREER HIGHS

Kills	NA
Attacks	NA
Hit % (Min. 10 att)	NA
Assists	NA
Aces	1 vs. Southeastern La. (09/10/23)
Digs	4 vs. Southeastern La. (09/10/23)
Total Blocks	NA
Block Solos	NA
Block Assists	NA

## Complete bio

### Freshman Season (2023)

- Logged an ace and four digs in her collegiate debut vs. Southeastern Louisiana (Sept. 10).
- Helped lead St. Thomas More High School to a 2022 Louisiana State Championship title.
- Named the 2022 Louisiana Gatorade Player of the Year.
- A 2022 AVCA High School All-American.

## 2023 SEASON MATCH-BY-MATCH

			Attack			Set			Serve				Recept			Blocking				Team					
Date	Opponent	SP	K	E	TA	PCT	A	TA	PCT	SA	SE	TA	PCT	RE	TA	PCT	DIG	BS	BA	BE	TOTAL	BHE	POINTS	HIT%	SCORE
09/10/2023	Southeastern La.	4	0	0	0	.000	0	0	.000	1	1	12	.917	0	0	.000	4	0	0	0	0.0	0	1.0	.271	1-3
Totals		4	0	0	0	.000	0	0	.000	1	1	12	.917	0	0	.000	4	0	0	0	0.0	0	1.0		

### Player Averages

Sets Played	Kills per set	Assists per set	Service aces per set	Digs per set	Blocks per set	Points per set
4	0.00	0.00	0.25	1.00	0.00	0.25

## FROEHLICH'S CAREER STATS

SEASON	TEAM	SM-MP	K	K/S	E	TA	PCT	A	A/S	SA	SA/S	SE	DIG	D/S	RE	BS	BA	TB	B/S	BE	BHE	PTS	PTS/S
2023-24	LSU	4-1	0	0.00	0	0	.000	0	0.00	1	0.25	1	4	1.00	0	0	0	0	0.00	0	0	1.0	0.25
TOTAL		4 - 1	0	0.00	0	0	.000	0	0.00	1	0.25	1	4	1.00	0	0	0	0	0.00	0	0	1.0	0.25



# BRI ZAMORA

15

Defensive Specialist/Libero • 5-4 • Sophomore • 1L • League City, Texas (Clear Creek HS)

## SEASON HIGHS

Kills	NA
Attacks	NA
Hit % (Min. 10 att)	NA
Assists	NA
Aces	NA
Digs	NA
Total Blocks	NA
Block Solos	NA
Block Assists	NA

## CAREER HIGHS

Kills	NA
Attacks	NA
Hit % (Min. 10 att)	NA
Assists	1 at No. 15 Kentucky (09/25/22)
Aces	2, Three Times
Digs	4 at Alabama (10/19/22)
Total Blocks	NA
Block Solos	NA
Block Assists	NA

## Complete bio

### Sophomore Season (2023)

- Logged a career-high two aces last season vs. Ole Miss (Sept. 30), at Alabama (Oct. 19) and vs. Mississippi St. (Oct. 29).
- Was an AVCA Best and Brightest Team selection.

## 2022 SEASON MATCH-BY-MATCH

		Attack				Set			Serve				Recept			Blocking				Team					
Date	Opponent	SP	K	E	TA	PCT	A	TA	PCT	SA	SE	TA	PCT	RE	TA	PCT	DIG	BS	BA	BE	TOTAL	BHE	POINTS	HIT%	SCORE
09/02/2022	Troy	3	0	0	0	.000	0	0	.000	0	0	1	1.000	0	0	.000	0	0	0	0	0.0	0	0.0	.384	3-0
09/09/2022	at Milwaukee	4	0	0	0	.000	0	0	.000	0	1	10	.900	0	0	.000	3	0	0	0	0.0	0	0.0	.333	3-1
09/16/2022	vs Oregon St.	1	0	0	0	.000	0	0	.000	1	2	4	.500	0	0	.000	0	0	0	0	0.0	0	1.0	.254	3-0
09/21/2022	Arkansas	2	0	0	0	.000	0	0	.000	0	0	4	1.000	0	0	.000	1	0	0	0	0.0	0	0.0	.184	3-2
09/25/2022	at Kentucky	1	0	0	0	.000	1	1	1.000	0	1	5	.800	0	0	.000	2	0	0	0	0.0	0	0.0	.274	0-3
09/30/2022	Ole Miss	3	0	0	0	.000	0	1	.000	2	1	8	.875	0	0	.000	1	0	0	0	0.0	0	2.0	.277	3-2
10/01/2022	Ole Miss	3	0	0	0	.000	0	0	.000	0	0	5	1.000	0	0	.000	0	0	0	0	0.0	0	0.0	.220	2-3
10/05/2022	Auburn	5	0	0	0	.000	0	0	.000	0	1	6	.833	0	0	.000	0	0	0	0	0.0	0	0.0	.202	3-2
10/08/2022	at Florida	3	0	0	0	.000	0	0	.000	0	0	6	1.000	0	0	.000	0	0	0	0	0.0	0	0.0	.124	1-3
10/09/2022	at Florida	5	0	0	0	.000	0	0	.000	0	2	11	.818	0	0	.000	2	0	0	0	0.0	0	0.0	.168	2-3
10/19/2022	at Alabama	4	0	0	0	.000	0	1	.000	2	2	14	.857	0	0	.000	4	0	0	0	0.0	0	2.0	.135	3-2
10/23/2022	South Carolina	2	0	0	0	.000	0	0	.000	1	0	4	1.000	0	0	.000	0	0	0	0	0.0	0	1.0	.320	3-0
10/29/2022	Mississippi St.	4	0	0	0	.000	0	2	.000	2	0	8	1.000	0	0	.000	1	0	0	0	0.0	0	2.0	.218	3-2
10/30/2022	Mississippi St.	5	0	0	0	.000	0	1	.000	0	0	9	1.000	0	0	.000	0	0	0	0	0.0	0	0.0	.167	2-3
11/05/2022	at Tennessee	2	0	0	0	.000	0	0	.000	0	0	4	1.000	0	0	.000	0	0	0	0	0.0	0	0.0	.208	0-3
Totals		47	0	0	0	.000	1	6	.167	8	10	99	.899	0	0	.000	14	0	0	0	0.0	0	8.0		

### Player Averages

Sets Played	Kills per set	Assists per set	Service aces per set	Digs per set	Blocks per set	Points per set
47	0.00	0.02	0.17	0.30	0.00	0.17

## ZAMORA'S CAREER STATS

SEASON	TEAM	SM-MP	K	K/S	E	TA	PCT	A	A/S	SA	SA/S	SE	DIG	D/S	RE	BS	BA	TB	B/S	BE	BHE	PTS	PTS/S
2022-23	LSU	47-15	0	0.00	0	0	.000	1	0.02	8	0.17	10	14	0.30	0	0	0	0	0.00	0	0	8.0	0.17
TOTAL		47 - 15	0	0.00	0	0	.000	1	0.02	8	0.17	10	14	0.30	0	0	0	0	0.00	0	0	8.0	0.17



# ELLIE ECHTER

16

Right Side/Outside Hitter · 6-1 · Redshirt Sophomore · 1L · Fulshear, Texas (Fulshear HS)

### SEASON HIGHS

Kills	13 at Ole Miss (11/1/23)
Attacks	34 at Ole Miss (11/1/23)
Assists	NA
Hit % (Min. 10 att)	.692 vs. South Carolina (10/29/23)
Aces	NA
Digs	4 No. 15 vs. Kentucky (10/27/23)
Total Blocks	2, Three Times
Block Solos	1 vs. No. 15 Kentucky (10/27/23)
Block Assists	2, Three Blocks

### CAREER HIGHS

Kills	13 at Ole Miss (11/1/23)
Attacks	34 at Ole Miss (11/1/23)
Assists	1 at Samford (09/17/21)
Hit % (Min. 10 att)	.692 vs. South Carolina (10/29/23)
Aces	1 at Ole Miss (11/11/21) at Mississippi St. (10/01/21) vs. Sam Houston (09/11/21)
Digs	6 vs. Alabama (09/25/21)
Total Blocks	5 vs. Troy (09/18/21)
Block Solos	1 vs. No. 15 Kentucky (10/27/23)
Block Assists	5 vs. Troy (09/18/21)

### [Complete bio](#)

### Redshirt Sophomore Season (2023)

- Logged a career-high 13 kills at Ole Miss (Nov. 1)
- Recorded a career-high .692 hitting percentage vs. South Carolina (Oct. 29).
- Has 31 kills and a .319 hitting percentage over the last four matches.
- Recorded a kill in her first match back since 2021 against Texas A&M-Corpus Christi (Sept. 15).
- Redshirt the 2022 season..

### 2023 SEASON MATCH-BY-MATCH

Date	Opponent	SP	Attack				Set		Serve				Recept			Blocking				Team					
			K	E	TA	PCT	A	TA	PCT	SA	SE	TA	PCT	RE	TA	PCT	DIG	BS	BA	BE	TOTAL	BHE	POINTS	HIT%	SCORE
09/15/2023	vs A&M-Corpus Christi	1	1	0	2	.500	0	0	.000	0	0	1	1.000	0	1	1.000	0	0	0	0	0.0	0	1.0	.321	3-0
10/08/2023	at Tennessee	2	1	0	2	.500	0	2	.000	0	0	0	.000	0	0	.000	1	0	0	0	0.0	0	1.0	.213	0-3
10/13/2023	Texas A&M	4	4	3	12	.083	0	0	.000	0	0	0	.000	0	3	1.000	1	0	1	1	1.0	0	4.5	.125	1-3
10/15/2023	at Georgia	*4	3	1	12	.167	0	0	.000	0	1	4	.750	1	6	.833	2	0	2	0	2.0	0	4.0	.219	1-3
10/22/2023	at Alabama	*3	7	1	14	.429	0	0	.000	0	0	0	.000	0	4	1.000	2	0	2	1	2.0	0	8.0	.270	3-0
10/27/2023	Kentucky	*3	2	1	8	.125	0	0	.000	0	0	0	.000	0	3	1.000	4	1	0	0	1.0	0	3.0	.175	0-3
10/29/2023	South Carolina	*3	9	0	13	.692	0	0	.000	0	0	0	.000	0	5	1.000	1	0	2	0	2.0	0	10.0	.326	3-0
11/01/2023	at Ole Miss	*5	13	7	34	.176	0	1	.000	0	0	0	.000	1	8	.875	3	0	1	1	1.0	0	13.5	.226	2-3
Totals		25	40	13	97	.278	0	3	.000	0	1	5	.800	2	30	.933	14	1	8	3	9.0	0	45.0		

#### Player Averages

Sets Played	Kills per set	Assists per set	Service aces per set	Digs per set	Blocks per set	Points per set
25	1.60	0.00	0.00	0.56	0.36	1.80

### ECHTER'S CAREER STATS

SEASON	TEAM	SM-MP	K	K/S	E	TA	PCT	A	A/S	SA	SA/S	SE	DIG	D/S	RE	BS	BA	TB	B/S	BE	BHE	PTS	PTS/S
2021-22	LSU	40-14	25	0.63	21	85	.047	1	0.03	3	0.08	14	21	0.53	1	0	13	13	0.33	0	0	34.5	0.86
2023-24	LSU	25-8	40	1.60	13	97	.278	0	0.00	0	0.00	1	14	0.56	2	1	8	9	0.36	3	0	45.0	1.80
TOTAL		65 - 22	65	1.00	34	182	.170	1	0.02	3	0.05	15	35	0.54	3	1	21	22	0.34	3	0	79.5	1.22



# ALEXIS ROBERSON

17

Middle Blocker • 6-3 • Redshirt Freshman • RS • Missouri City, Texas (Ridge Point HS)

## SEASON HIGHS

Kills	9 vs. South Carolina (10/29/23)
Attacks	17 at Georgia (10/15/23)
Hit % (Min. 10 att)	.375 vs. South Carolina (10/29/23)
Assists	1 vs. Texas A&M (10/13/23)
Aces	NA
Digs	1, Six Times
Total Blocks	6 at Georgia (10/15/23)
Block Solos	1, Three Times
Block Assists	6 at Georgia (10/15/23)

## CAREER HIGHS

Kills	9 vs. South Carolina (10/29/23)
Attacks	17 at Georgia (10/15/23)
Hit % (Min. 10 att)	.375 vs. South Carolina (10/29/23)
Assists	1 vs. Texas A&M (10/13/23)
Aces	NA
Digs	1, Six Times
Total Blocks	6 at Georgia (10/15/23)
Block Solos	1, Three Times
Block Assists	6 at Georgia (10/15/23)

## Complete bio

### Redshirt Freshman Season (2023)

- Turned in season-highs of nine kills and a .375 hitting percentage vs. South Carolina (Oct. 29)
- Had six blocks vs. Texas A&M (Oct. 13).
- Averages 0.96 blocks per set and has 31 kills in 24 sets played.
- Registered a kill and solo block in collegiate debut at No. 12 Tennessee (Oct. 8).
- Redshirt the 2022 season.
- Led Ridge Point High School team to the 6A Texas State Finals.

### 2023 SEASON MATCH-BY-MATCH

		Attack				Set			Serve			Recept			Blocking				Team						
Date	Opponent	SP	K	E	TA	PCT	A	TA	PCT	SA	SE	TA	PCT	RE	TA	PCT	DIG	BS	BA	BE	TOTAL	BHE	POINTS	HIT%	SCORE
10/08/2023	at Tennessee	2	1	0	6	.167	0	0	.000	0	0	0	.000	0	0	.000	0	1	0	0	1.0	0	2.0	.213	0-3
10/13/2023	Texas A&M	*4	3	0	12	.250	1	5	.200	0	0	0	.000	0	0	.000	1	0	6	1	6.0	0	6.0	.125	1-3
10/15/2023	at Georgia	*4	8	2	17	.353	0	2	.000	0	0	0	.000	0	0	.000	1	0	2	1	2.0	0	9.0	.219	1-3
10/22/2023	at Alabama	*3	3	2	12	.083	0	0	.000	0	0	0	.000	0	0	.000	1	0	2	0	2.0	0	4.0	.270	3-0
10/27/2023	Kentucky	*3	3	1	9	.222	0	2	.000	0	0	0	.000	0	0	.000	1	0	4	0	4.0	1	5.0	.175	0-3
10/29/2023	South Carolina	*3	9	3	16	.375	0	1	.000	0	0	0	.000	0	0	.000	1	1	4	0	5.0	0	12.0	.326	3-0
11/01/2023	at Ole Miss	*5	4	2	10	.200	0	0	.000	0	0	0	.000	0	0	.000	1	1	2	1	3.0	0	6.0	.226	2-3
Totals		24	31	10	82	.256	1	10	.100	0	0	0	.000	0	0	.000	6	3	20	3	23.0	1	44.0		

#### Player Averages

Sets Played	Kills per set	Assists per set	Service aces per set	Digs per set	Blocks per set	Points per set
24	1.29	0.04	0.00	0.25	0.96	1.83

## ROBERSON'S CAREER STATS

SEASON	TEAM	SM-MP	K	K/S	E	TA	PCT	A	A/S	SA	SA/S	SE	DIG	D/S	RE	BS	BA	TB	B/S	BE	BHE	PTS	PTS/S
2023-24	LSU	24-7	31	1.29	10	82	.256	1	0.04	0	0.00	0	6	0.25	0	3	20	23	0.96	3	1	44.0	1.83
TOTAL		24 - 7	31	1.29	10	82	.256	1	0.04	0	0.00	0	6	0.25	0	3	20	23	0.96	3	1	44.0	1.83





# MIKA ROME

# 20

Setter • 5-10 • Freshman • HS • Ra'anana, Israel (Mekif HaSharon School)

## SEASON HIGHS

Kills	NA
Attacks	NA
Hit % (Min. 10 att)	NA
Assists	NA
Aces	NA
Digs	NA
Total Blocks	NA
Block Solos	NA
Block Assists	NA

## CAREER HIGHS

Kills	NA
Attacks	NA
Hit % (Min. 10 att)	NA
Assists	NA
Aces	NA
Digs	NA
Total Blocks	NA
Block Solos	NA
Block Assists	NA

\* Includes matches played at Nicholls State.

## [Complete bio](#)

### Freshman Season (2023)

- Played for the Israeli National Team and was captain for a number of youth Israeli teams.
- U21 Israeli Team qualified for the European Championship and finished 7th.

## 2023 SEASON MATCH-BY-MATCH

## ROME'S CAREER STATS







# EMILY MITTER

# 29

Setter • 5-9 • Graduate Student • TR • Redondo, Beach, Calif. (Campbell)

## SEASON HIGHS

Kills	NA
Attacks	1 vs. No. 15 Kentucky (10/27/23) vs. Southeastern La. (09/10/23)
Hit % (Min. 10 att)	NA
Assists	21 at Georgia (10/15/23)
Aces	1 at No. 20 Creighton (09/2/23)
Digs	12 at Georgia (10/15/23)
Total Blocks	NA
Block Solos	NA
Block Assists	NA

## CAREER HIGHS\*

Kills	1, Seven Times*
Attacks	9 at UNC Asheville (02/12/21)*
Hit % (Min. 10 att.)	NA
Assists	36 vs. Radford (11/05/22)*
Aces	6 vs. Presbyterian (11/12/21)*
Digs	16 vs. N.C. A&T (10/29/21)* at N.C. Central (09/07/19)*
Total Blocks	1, Three Times*
Block Solos	NA
Block Assists	1, Three Times*

\* Played at Campbell.

## Complete bio

### Graduate Season (2023)

- Registered her 2,000th career assist at Ole Miss (Nov. 1)
- Has career averages of 4.81 assists and 2.03 digs per set. Also has 849 career digs and 83 career aces.
- Her 21 assists and 12 digs at Georgia (Oct. 15) was her first double-double at LSU and 30th of her career.
- Registered five assists and an ace in her first match as a LSU Tiger.
- A four-year letterwinner who transferred in from Campbell.
- Totalled eight double-doubles last season at Campbell.

## 2023 SEASON MATCH-BY-MATCH

			Attack				Set			Serve				Recept			Blocking					Team			
Date	Opponent	SP	K	E	TA	PCT	A	TA	PCT	SA	SE	TA	PCT	RE	TA	PCT	DIG	BS	BA	BE	TOTAL	BHE	POINTS	HIT%	SCORE
09/02/2023	at Creighton	2	0	0	0	.000	5	26	.192	1	1	9	.889	0	1	1.000	3	0	0	0	0.0	0	1.0	.171	0-3
09/03/2023	vs Ball St.	1	0	0	0	.000	6	16	.375	0	0	3	1.000	0	0	.000	0	0	0	0	0.0	0	0.266	3-1	
09/10/2023	Southeastern La.	1	0	0	1	.000	3	6	.500	0	0	0	.000	0	0	.000	0	0	0	0	0.0	0	0.271	1-3	
10/08/2023	at Tennessee	3	0	0	0	.000	11	33	.333	0	2	6	.667	0	0	.000	6	0	0	0	0.0	0	0.213	0-3	
10/13/2023	Texas A&M	4	0	0	0	.000	10	39	.256	0	1	9	.889	0	0	.000	7	0	0	0	0.0	0	0.125	1-3	
10/15/2023	at Georgia	4	0	0	0	.000	21	55	.382	0	1	12	.917	0	0	.000	12	0	0	0	0.0	0	0.219	1-3	
10/22/2023	at Alabama	3	0	0	0	.000	13	37	.351	0	1	11	.909	0	0	.000	1	0	0	0	0.0	0	0.270	3-0	
10/27/2023	Kentucky	3	0	0	1	.000	9	25	.360	0	0	8	1.000	0	1	1.000	4	0	0	0	0.0	0	0.175	0-3	
10/29/2023	South Carolina	3	0	0	0	.000	12	30	.400	0	0	11	1.000	0	0	.000	1	0	0	0	0.0	0	0.326	3-0	
11/01/2023	at Ole Miss	5	0	0	0	.000	19	49	.388	0	0	18	1.000	0	0	.000	5	0	0	0	0.0	0	0.226	2-3	
Totals		29	0	0	2	.000	109	316	.345	1	6	87	.931	0	2	1.000	39	0	0	0	0.0	0	1.0		

### Player Averages

Sets Played	Kills per set	Assists per set	Service aces per set	Digs per set	Blocks per set	Points per set
29	0.00	3.76	0.03	1.34	0.00	0.03

## MITTER'S CAREER STATS

SEASON	TEAM	SM-MP	K	K/S	E	TA	PCT	A	A/S	SA	SA/S	SE	DIG	D/S	RE	BS	BA	TB	B/S	BE	BHE	PTS	PTS/S
2019-20	Campb	108-30	3	0.03	3	17	.000	505	4.68	31	0.29	24	206	1.91	2	0	1	1	0.01	0	7	34.5	0.32
2020-21	Campb	52-16	1	0.02	2	22	-.045	246	4.73	8	0.15	13	110	2.12	2	0	0	0	0.00	0	3	9.0	0.17
2021-22	Campb	114-31	2	0.02	2	28	.000	494	4.33	23	0.20	16	246	2.16	0	0	1	1	0.01	1	10	25.5	0.22
2022-23	Campb	116-30	4	0.03	4	22	.000	662	5.71	20	0.17	14	248	2.14	1	0	1	1	0.01	0	6	24.5	0.21
2023-24	LSU	29-10	0	0.00	0	2	.000	109	3.76	1	0.03	6	39	1.34	0	0	0	0	0.00	0	0	1.0	0.03
TOTAL FOR LSU		29 - 10	0	0.00	0	2	.000	109	3.76	1	0.03	6	39	1.34	0	0	0	0	0.00	0	0	1.0	0.03
TOTAL		419 - 117	10	0.02	11	91	-.011	2016	4.81	83	0.20	73	849	2.03	5	0	3	3	0.01	1	26	94.5	0.23