

# LSU VOLLEYBALL

16 NCAA Appearances • 2 Final Four Appearances • 9 SEC Titles

NCAA Final Four: 1990, 1991

SEC Regular Season Championships: 1986, 1989, 1990, 1991, 2009

SEC Tournament Championships: 1986, 1989, 1990, 1991



## 2024 SCHEDULE

DATE	OPPONENT	TV	TIME/SCORE
8/30	New Hampshire	SECN+	W, 3-2
8/30	Maryland	SECN+	W, 3-1
8/31	Troy	SECN+	L, 3-2
9/5	at Duke	ACCNX	W, 3-1
9/6	vs. Florida Int. ^	ACCNX	W, 3-2
9/7	vs. Davidson ^	ACCNX	W, 3-0
9/12	at #18 Baylor	ESPN+	7 pm
9/13	vs. Samford ^	ESPN+	5 pm
9/19	Boston College	SECN+	6 pm
9/20	North Florida	SECN+	10 am
9/20	San Diego	SECN+	7 pm
9/27	Missouri*	SECN+	7 pm
9/29	Texas*	SECN	2 pm
10/4	at Mississippi St.*	SECN+	3 pm
10/6	at Ole Miss*	SECN+	2 pm
10/11	Oklahoma*	SECN+	7 pm
10/13	Texas A&M*	SECN+	1 pm
10/20	Florida*	ESPN2	Noon
10/25	at Auburn*	SECN+	6:30 pm
10/27	at Georgia*	SECN+	1 pm
11/3	Alabama*	SECN+	1 pm
11/8	at Tennessee*	SECN+	5:30 pm
11/10	at Kentucky*	SECN	3:30 pm
11/13	South Carolina*	SECN+	7 pm
11/17	Arkansas*	SECN	2 pm
11/24	at Texas A&M*	SECN+	2 pm
11/29	at Alabama.*	SECN+	3 pm

### Bold Indicates Home

All times are central and subject to change

^ - at Duke Tournament

^ - at Baylor Invitational

\* - SEC Match

SECN - SEC Network

SECN+ - SEC Network Plus

ACCNX - ACC Network Extra



/LSUVOLLEYBALL



@LSUVOLLEYBALL



@LSUVOLLEYBALL

## THE MATCHUP

Match 7-8 | Sept. 12-13 | Waco, Texas | Ferrell Center



### LSU Tigers

Record	5-1
SEC	0-0
vs. Top-25	0-0
Streak	W3
AVCA Ranking	NR
Head Coach	Tonya Johnson
Record at LSU	32-32
Season	3rd Season
Career Record	117-104
Season	8th Season



### Baylor Bears

Record	5-2
Streak	L2
AVCA Ranking	18
Head Coach	Ryan McGuyre
Record at Baylor	201-78 (10th Season)
Career Record	536-211 (23rd Season)



### Samford Bulldogs

Record	5-0
Streak	W5
AVCA Ranking	NR
Head Coach	Keylor Chan
Record at Samford	143-103 (9th Season)
Career Record	395-381 (26th Season)

## TRACKING THE TIGERS

The 2024 season is the 50th year of LSU Volleyball. The LSU volleyball program has made 16 NCAA appearances, including two Final Four appearances (1990, 1991), and has earned 10 AVCA All-American and 99 All-SEC selections.

Head coach Tonya Johnson is in her third season leading the program. She is the sixth head coach for the LSU Tigers volleyball program.

Johnson played for the Tigers from 1987-90 and helped the program reach its first Final Four Appearance in 1990. She was also an assistant coach under predecessor and AVCA Hall of Fame coach Fran Flory.

The SEC has five teams in the latest AVCA Top 25 rankings, including new addition in No. 6 Texas, No. 10 Kentucky, No. 13 Florida, No. 16 Tennessee and No. 22 Arkansas. LSU will play each of these teams in league play.

LSU is 8-5 against Baylor and Samford. LSU and Baylor are even at 5-5 and are 3-0 against Samford.

The Tigers went 3-0 last weekend at the Duke Tournament by defeating Duke 3-1, FIU, 3-2 and Davidson 3-0.

LSU leads the SEC with 351 kills (No. 13 in the NCAA) and 334 assists (No. 8 in the NCAA). The Tigers who are averaging 2.12 blocks and 13.58 digs per set to hold its opponent to a .196 hitting percentage. LSU ranks No. 4 with 55 total blocks.

The Tigers return eight players from the 2023 roster, four of whom played in five or more sets. On the other hand, LSU welcomes 10 newcomers, including seven true freshmen and three transfers.

Outside hitter Jurnee Robinson is this week's SEC Offensive Player of the Week. Robinson is the nation's leader after week 2 with 155 points and 138 kills. She has five double-double and five 20-kill performances this season.

Middle blockers Angie Lee and Jessica Jones has dominated in the middle as they have combined for 93 kills and 52 kills.

Lee had a career-high seven blocks versus Maryland, and Jones logged her first career double-double with 12 kills and 12 blocks against Troy.

Graduate transfer setter Bailey Ortega ranks No. 2 in the NCAA and No. 1 in the SEC with 289 assists and rank No. 9 in the NCAA and No. 3 in the SEC with 11.12 assists per set. Ortega has three matches with 50 or more assists and now has 2,463 career assists.

Outside hitter AC Froehlich had a breakout weekend at Duke where she logged 3.88 points, 3.17 kills per set seven aces and 27 digs.

Right side Jade Demps - a 2021 National Champion with Wisconsin - has 42 kills, seven aces, 17 blocks and 2.54 digs per set (61 total).

Liberos Aly Kirkhoff and Ella Hemmings anchor the defense with 60 and 26 digs, respectively.

The Tigers' three transfers are setter Bailey Ortega (Iowa), Rumur Rouille (Long Island) and Ana Tevdoradze (Miami Dade College).

The freshmen class includes setter Shea Bruntmyer (Abilene, Texas), defensive specialist/libero Sophie Bonnafee (Covington, La.), middle blocker Jessica Jones (Frisco, Texas), defensive specialist/libero Aly Kirkoff (Indianapolis, Ind.), defensive specialist/libero Remi Nuss (Overland Park, Kan.), and outside hitters Laine Pyles (Keller, Texas) and Bri Watson (Flower Mound, Texas).



## 2024 LSU ROSTER

NO.	NAME	POS	HT.	CL.-EXP	HOMETOWN (PREVIOUS SCHOOL)
0	Mackenzie Boyer	MB	6-3	R-Fr.-HS	Austin, Texas (Vandegrift HS)
1	Ana Tevdoradze	OH/RS	6-3	Jr.-TR	Tbilisi, Georgia (Miami Dade College)
2	Bailey Ortega	S	5-9	Gr.-TR	Davenport, Iowa (Iowa)
3	Aly Kirkhoff	DS/L	5-6	Fr.-HS	Indianapolis, Ind. (Roncalli HS)
4	Angelina Lee	MB	6-2	So.-1L	Long Island, N.Y. (Farmersville HS)
5	Jurnee Robinson	OH	6-1	So.-1L	Simpsonville, S.C. (Mauldin HS)
6	Madison Martin	DS/L	5-8	Sr.-3L	Ormond Beach, Fla. (Mt. Carmel Academy)
7	Jessica Jones	MB	6-2	Fr.-HS	Frisco, Texas (Wakeland HS)
8	Ella Hemmings	DS/L	5-6	So.-1L	Brownsburg, Ind. (Brownsburg HS)
9	Shea Bruntmyer	S	5-9	Fr.-HS	Abilene Texas (IMG Academy)
11	Lainee Pyles	OH	6-2	Fr.-HS	Keller, Texas (Fossil Ridge HS)
12	Bri Watson	OH	6-1	Fr.-HS	Flower Mound, Texas (Flower Mound HS)
13	AC Froehlich	OH/RS	6-1	So.-1L	Lafayette, La. (St. Thomas More HS)
14	Rumur Rouille	MB	6-4	Sr.-TR	Tuscon, Ariz. (Long Island)
16	Mika Rome	S	5-10	R-Fr.-HS	Ra'anana, Israel (Mekif HaSharon School)
18	Remi Nuss	DS/L	5-6	Fr.-HS	Overland Park, Kan. (Blue Valley Northwest HS)
23	Jade Demps	RS	6-2	Sr.-1L	Raleigh, N.C. (Wisconsin)
24	Sophie Bonnafee	DS/L	5-7	Fr.-HS	Covington, La. (Archbishop Hannan HS)

## COACHING STAFF

**Head Coach:** Tonya Johnson (LSU, 1993)  
**Record at LSU (Years):** 32-32 (3rd)  
**Overall Record (Years):** 117-104 (8th)  
**Associate Head Coach:** Jill Wilson (LSU, 2001)  
**Assistant Coach:** Kevin Inlow (Texas, 2016)  
**Assistant Coach:** Ashley Shook (Texas, 2020)  
**Director of Ops.:** Blaire Hiler (Kentucky, 2011)

## TEAM INFORMATION

2023 Record	11-17
2023 SEC Record	6-12
2023 Postseason	N/A
2023 AVCA Final Ranking	N/A
Returning/Lost	8/12
Starters Returning/Lost	3/3
Newcomers	10

## PRONUNCIATION GUIDE

<b>Mackenzie Boyer</b>	Muh-KEN-zie
<b>Ana Tevdoradze</b>	OHN-uh Tehv-doe-RAH-seh
<b>Bailey Ortega</b>	Ore-TAY-guh
<b>Aly Kirkhoff</b>	AL-ee KIRK-hoff
<b>Jurnee Robinson</b>	jer-nee
<b>Shea Bruntmyer</b>	Shay
<b>Lainee Pyles</b>	LAY-nee Piles
<b>AC Froehlich</b>	FRAY-lick
<b>Rumur Rouille</b>	ROOM-er RUE-lay
<b>Mika Rome</b>	MEE-cuh
<b>Sophie Bonnafee</b>	BOHN-uh-fee

## PROGRAM HISTORY

All-Time Record	1,055-672 (.610)
All-Time SEC Record	346-274 (.558)
SEC Western Division Titles	7
Seasons	2005-2011
SEC Regular Season Titles	5
Seasons	1986, 1989, 1990, 1991, 2009
SEC Tournament Titles	4
Seasons	1986, 1989, 1990, 1991
NCAA Tournament Record	15-16 (.483)
NCAA Tournament Appearances	16
Seasons	1986-87, 1989-92, 2005-10, 2013-14, 2017, 2022
Final Four Appearances	2 (1990, 1991)

## MEDIA CREDENTIALS

Requests for working media credentials should be directed to Keonte Herrera, the Communications Director for LSU Volleyball.

All media members are encouraged to apply for season credentials. Single-game credentials can be picked up an hour before match time at the press will call table located in the Northeast Corridor of the Maravich Center.

## INTERVIEWS

Postmatch interviews with players and coaches are done courtside after a 10-minute cooling-off.

For assistance with opposing coaches and players, please contact the opposing school's SID for their postmatch media procedures.

Media outlets looking to interview players or coaches outside of match days must make their request 24 hours in advance through Keonte' Herrera. Please do not contact Coach Johnson or student-athletes directly.

## SEC MEDIA INFORMATION

Jill Skotarczak is the volleyball media relations director for the SEC and can be reached via email at jskotarczak@sec.org.

Each Monday, the league will name a Player of the Week, a Defensive Player of the Week and a Freshman of the Week.

## WWW.LSUSPORTS.NET

Information about LSU volleyball, including player bios, game recaps and notes packets, is available online at the Official Website of LSU Athletics, [www.LSUsports.net](http://www.LSUsports.net).

Final box scores, game-by-game stats, as well as overall stats for the entire season can also be found online at [www.LSUsports.net](http://www.LSUsports.net).

## ATHLETICS COMMUNICATIONS

### Mailing Address

LSU Athletics Administration Building  
Baton Rouge, LA 70803

### Overnight Shipping Address

LSU Athletics Administration Building  
Nicholson Dr. at N. Stadium Drive  
Baton Rouge, LA 70803

### Keonte' Herrera

**Cell Phone:** 254-338-7609

**Email:** [kkh@lsu.edu](mailto:kkh@lsu.edu)

# AVCA POLL

## 2024 AVCA/TARAFLEX Division I Top 25 Coaches Poll (September 9)

Rk.	Team (1st Votes)	Points	Rec.	Prev.
1	Pittsburgh (29)	1,471	3-0	3
2	Stanford (23)	1,462	4-0	5
3	Penn State (6)	1,389	5-0	7
4	Louisville (1)	1,284	5-1	4
5	Nebraska (2)	1,277	5-1	2
6	Texas	1,168	2-2	1
7	Purdue	1,118	6-0	8
8	Wisconsin	1,087	2-3	6
9	Creighton	1,042	5-0	11
10	Kentucky	945	5-2	9
11	Kansas	898	6-0	13
12	Oregon	836	4-1	12
13	Florida	632	5-1	10
14	Arizona State	603	6-0	16
15	Georgia Tech	575	4-1	19
16	Tennessee	500	2-2	17
17	BYU	488	4-1	14
18	Baylor	465	5-1	23
19	Minnesota	433	1-3	18
20	Miami (FL)	393	5-0	NR
21	Florida State	344	4-1	15
22	Arkansas	303	7-0	21
23	USC	295	3-1	20
24	Dayton	221	5-0	22
25	TCU	165	2-2	NR

**Receiving Votes:** SMU 132; Auburn 85; UCLA 74; Marquette 39; Washington 22; Georgia 20; South Florida 18; Western Kentucky 3

9 teams mentioned on only one ballot for a total of 38 combined points.

DATE	AVCA RANKING [VOTES]
Preseason	NR
Week 1: September 2	NR
Week 2: September 9	NR
Week 3: September 16	--
Week 4: September 23	--
Week 5: September 30	--
Week 6: October 7	--
Week 7: October 14	--
Week 8: October 21	--
Week 9: October 28	--
Week 10: November 4	--
Week 11: November 11	--
Week 12: November 18	--
Week 13: November 25	--
Week 14: December 2	--
Final Poll: December 16	--

### LAST TIME RANKED

15 [11/29/10]

### MOST WEEKS RANKED

24 [09/04/06-10/15/07]; [10/12/09-11/29/10]

### HIGHEST RANKING

10 [10/02/06, 10/26/06]

## 50 YEARS OF LSU VOLLEYBALL

The 2024 season will be LSU's 50th year of volleyball. The program has produced 10 AVCA All-American selections, including five first-team selections, 36 AVCA All-Region selections, 99 All-SEC selections, five SEC Freshmen of the Year, two SEC Defensive Players of the Year, and one SEC Player of the Year.

The Tigers first played in 1974 under head coach Jinks Coleman, who posted a 23-6 record. Coleman coached the program's first three seasons (1974-1976) and has an overall record of 81-26, boasting the best coaching winning percentage at .757.

After eight years with head coaches Garry Owens (1977-1980) and Ruth Nelson (1981-1984) splitting them evenly, Head Coach Scott Luster took the reins for the next 13 seasons (1985-1997). During his tenure, LSU won four SEC regular-season and tournament championship titles (1986-1991) and made back-to-back NCAA Final Four appearances in 1990 and 1991.

Fran Flory was named head coach in 1998 and is the all-time wins leader with 405 victories in 24 seasons (1998-2021). Flory led the Tigers to seven consecutive SEC Western Division Titles (2005-2011) and one regular-season SEC Championship in 2009.

Tonya Johnson, a member of the first LSU team to reach the NCAA Final Four, now leads the program since the 2022 season. In her first season, the Tigers reached the NCAA Tournament for the first time since 2017.

## THE STAFF

The 2024 season will be the third under head coach Tonya Johnson and her staff, which includes associate head coach and recruiting coordinator Jill Wilson and assistant coaches Kevin Inlow and Ashley Shook.

In the first year of the current staff's tenure, LSU made its first NCAA Tournament appearance since 2017 and won its first NCAA Tournament match since 2014, a 3-1 victory against Hawai'i on Dec. 2, 2022, in Stanford, Calif.

## AVCA RANKINGS

The SEC has five teams ranked in the latest AVCA/TARAFLEX Division I Top 25 Poll, including two in the top 10 (No. 6 Texas, No. 10 Kentucky). Florida is ranked No. 13, Tennessee is ranked No. 16 and Arkansas is No. 22. LSU will play each of the five ranked SEC teams in league play.

## THE SERIES

When combining all-time records against Baylor and Samford, LSU is 8-5 with a 5-5 record against Baylor and 3-0 versus Samford.

LSU and Baylor first met in 1980 and last met in 2018. Baylor has won the last three meetings, including the last two which are the only matches in the series played in Waco prior to this weekend. LSU is looking for its first win against a nationally ranked team since knocking off then No. 15 Kentucky in five sets on Sept. 24, 2022.

LSU and Samford first met in 2014 and played each other in 2021 and 2022. The last meeting was in Baton Rouge in 2022 when the Tigers swept the Bulldogs. Friday's match will be the second time the clubs have played on a neutral site.

## LAST TIME OUT

LSU went 3-0 at the Duke tournament inside of the historic Cameron Indoor Stadium. After defeating Duke 3-1 to open the weekend, the Tigers rallied from a 1-2 deficit to overcome Florida International and recorded their first sweep of the season against Davidson.

The Tigers hit .289 on the weekend on 169 kills and averaged 14.08 kills, 13.25 assists, 1.42 aces, 1.67 blocks and 14.25 digs per set.

## TIGERS' NUMBERS

LSU ranks in the top 10 of the country with 334 assists (No. 8 in NCAA, No. 1 in SEC) and ranks No. 13 in the nation and leads the SEC with 351 kills.

The Tigers are hitting .260 on the season behind 13.50 kills per set, and are holding opponents to a .196 hitting percentage thanks to 2.12 blocks per set.

## THE BLOCK IS HOT

LSU ranks No. 4 in the SEC with 55 total blocks. The Tigers' season-high 18-block performance versus Troy was the program's first time reaching 15 or more blocks since recording 16 at South Carolina on Oct. 19, 2022 and the most blocks of any SEC team in a single match this season.

ROBINSON EARNS SEC PLAYER OF THE WEEK

Outside hitter Jurnee Robinson wins her second career SEC weekly accolade after being named the SEC Offensive Player of the Week on Sept. 9, 2024 due to her performance at the Duke Tournament Sept. 5-7, 2024.

Robinson led the Tigers with 5.83 points and 5.42 kills per set in North Carolina. She also had six blocks and two aces. Robinson tallied two double-doubles on the weekend and two matches with 20 or more kills.

Robinson was tabbed the SEC Freshman of the Week in 2023 after the opening weekend where she recorded 23 kills against UCLA in consecutive matches.

J5 OUT THE GATES

Robinson has had one of the best starts of any player in all of Division I volleyball. Robinson leads the nation with 155 total points and 138 kills, and ranks No. 2 in the Division I volleyball with 5.96 points and 5.31 kills per set.

In LSU's first six matches, Robinson has five double-doubles and five 20-kill performances, including a career-high 28 kills twice this season. Robinson opened the season with four consecutive double-doubles, and of her 10 career double-doubles, six of them feature kills of 20 or more.

Robinson is the first Tiger to log 25 kills or more in a match since All-American Taylor Bannister in 2021 and has done it three times this season (vs. New Hampshire, Maryland and FIU).

Robinson also leads LSU with nine aces, has 15 total blocks, and averaged 2.50 digs per set.

EMBRACE THE JURNEE

Robinson was placed on the 2024 Preseason All-SEC Team after being named the 2023 AVCA South Region Freshman of the Year and SEC All-Freshman Team after averaging 3.87 kills and 4.46 points per set in 2023. Those marks ranked No. 6 in the SEC, No. 5 among all NCAA Division I freshmen, and No. 56 and No. 52 in Division I volleyball, respectively. Robinson's 3.87 kills per set in 2023 is the eighth most in the program's single-season record book.

AC BREAKOUT IN N.C.

Outside hitter AC Froehlich had a career weekend as she finished the Duke Tournament with 3.88 points and 3.17 kills per set. She led the team with seven aces and had three blocks and 2.25 digs per set.

After logging 14 kills and a career-high four aces against Duke (Sept. 5) to open the weekend, Froehlich turned in her first career double-double with career highs of 15 kills and 14 digs and added three more aces in the five-set win over FIU (Sept. 6).

THE HOMETOWN KID

Froehlich, who is one of two players on the 2024 roster from Louisiana, is second on the team with 45 kills and average 2.81 kills per set. She also has 37 total digs for a 2.31 average per set which ranks fourth on the team.

TROUBLE IN THE MIDDLE

LSU's middle blockers Angelina Lee and Jessica Jones are a problem at the net. The duo has combined for 93 kills and 52 blocks this season.

BLOCKED BY ANGIE

Lee leads LSU with 1.04 blocks per set and 27 blocks this season, including three solo blocks. Lee had a career-high seven blocks against Maryland on Aug. 30.

Lee has stepped up offensively with 50 kills on a .340 hitting percentage and recorded three career-high 10-kill matches over six matches.

Lee, a sophomore, totaled 48 kills and 32 blocks (0.92/set) in just 37 sets played last season.

WHO? JESS JONES!

Freshman middle blocker Jessica Jones averages 0.96 blocks per set on 25 total blocks this season. She also has 43 kills and ranks No. 10 in the SEC with a .352 hitting percentage.

Jones recorded her first collegiate double-double with 12 kills and 12 blocks versus Troy (Aug. 31), becoming the first LSU Tiger to log 10 or more blocks in a single match since Whitney Forman in 2021.

Jones did not play like a freshman during opening weekend. She finished with 1.14 blocks per set and 16 total blocks, and landed 25 kills on a .400 hitting percentage.

SETTING THE TONE

Graduate transfer setter Bailey Ortega ranks No. 3 in the SEC with 11.12 assists per set and has dished out 289 assists, ranking No. 2 in the country. She now has 2,463 career assists entering week three of the 2024 season. Ortega also averages 2.27 digs per set (59 total) and has 13 kills and nine blocks, highlighted by two solo blocks.

In her first six matches at LSU, Ortega has two double-doubles and three matches with 50 or more assists, including a career-high 58 assists. Ortega claimed her 10th career double-double in her first match as an LSU Tiger with 55 assists and 11 digs versus New Hampshire (Aug. 30), and had 50 assists and a career-high 17 digs against FIU (Sept. 6).

Ortega transferred in from Iowa, where she ranks No. 9 all-time with 2,174 career assists. She is 537 assists shy of 3,000 career assists.

TIGER TRENDS	
Overall	5-1
SEC	0-0
Non-Conference	5-1
Home	2-1
Away	1-0
Neutral	2-0
SEC Home	0-0
SEC Away	0-0
Non-Conference Home	2-1
Non-Conference Away	1-0
Non-Conference Neutral	2-0
Top 10 Opponents	0-0
Top 25 Opponents	0-0
Three-Set Matches	1-0
Four-Set Matches	2-0
Five-Set Matches	2-1
Win First Set	4-0
Lose First Set	1-1
Leading 2-0	1-0
Tied 1-1	2-1
Trailing 2-0	1-0
Leading 2-1	2-1
Trailing 2-1	2-0
Tied 2-2	2-1
Hitting Below .200	2-0
Hitting .200-.249	1-0
Hitting .250-.299	0-1
Hitting Above .300	2-0
August	2-1
September	3-0
October	0-0
November	0-0
December	0-0
Monday	0-0
Tuesday	0-0
Wednesday	0-0
Thursday	1-0
Friday	3-0
Saturday	1-1
Sunday	0-0
Day Matches	3-1
Night Matches	2-0
Purple Jerseys	1-0
Gold Jerseys	1-1
White Jerseys	2-0
Black Jerseys	1-0

2024 SEC STANDINGS			
TEAM	OVERALL	SEC	STREAK
Arkansas	7-0	0-0	W7
Auburn	6-0	0-0	W6
Texas A&M	4-0	0-0	W4
Alabama	5-1	0-0	L1
Florida	5-1	0-0	W2
LSU	5-1	0-0	W3
South Carolina	4-1	0-0	W4
Oklahoma	3-1	0-0	W3
Kentucky	5-2	0-0	W2
Ole Miss	4-2	0-0	W2
Georgia	3-3	0-0	W1
Missouri	3-3	0-0	L2
Tennessee	2-2	0-0	W2
Texas	2-2	0-0	L1
Mississippi St.	1-3	0-0	L2

2024 HONORS & AWARDS	
<b>Jurnee Robinson</b>	
SEC Offensive Player of the Week (Sept. 9)	
Preseason All-SEC	

DOUBLE-DOUBLES					
NAME	'21	'22	'23	'24	CAR.
Bailey Ortega	7	-	2	2	11
Jurnee Robinson	-	-	5	5	10
Jade Demps	2	-	3	-	5
AC Froehlich	-	-	-	1	1
Jessica Jones	-	-	-	1	1

**GEAUX BIG WITH B**  
Ortega has delved into the opportunities LSU has to offer and started a podcast titled Geaux Big with B, which is part of the Hey Fightin' Podcast Network.

**JD MAKING IT HAPPEN**  
Right side Jade Demps has been what LSU has needed in multiple areas over multiple matches. Demps leads the team with 2.54 digs per set, has 42 kills, 17 blocks and seven aces in 24 sets played.  
In her return home to North Carolina, Demps opened the weekend by matching a career-high 17 digs against Duke (Sept. 5) and ended the weekend by tying her career-best .545 hitting percentage after garnering six kills on 11 errorless swings versus Davidson (Sept. 7).

During opening weekend, Demps filled the stat sheet with 21 kills, 11 blocks (0.92/ set), five aces and 2.42 digs per set (29 total). Demps had career-highs of 13 kills and career-high seven blocks against Troy (Aug. 31), and also matched a career-high three aces versus Maryland (Aug. 30) during opening weekend.

**ADDED CHAMPIONSHIP PEDIGREE**  
Demps, a National Champion at Wisconsin, came to LSU in 2023. Jade helped the Badgers reach three consecutive NCAA Tournament appearances, two Final Four appearances and won the 2021 NCAA Division I Volleyball National Championship title.  
In her first yea with LSU, Demps totaled 182 kills, 137 digs, 37 blocks, 23 assists and nine aces. She had three double-doubles last season and has five in her career.

**L1 and L2**  
LSU has taken full advantage of the new rule that permits two liberos. Freshman libero Aly Kirkhoff stared last weekend and overall this season, she averages 2.40 digs per set and 60 total digs. Kirkhoff has recorded an ace in the last three matches with her first collegiate ace serving as the match winning point at Duke (Sept. 5).

Libero Ella Hemmings has 26 digs this season with one ace and one kill - her lone career kill. Hemmings played 68 sets over 22 matches, totaling 25 digs, 13 aces and 10 assists.

**SNEAKY PICKUP**  
Pin hitter Ana Tevdoradze had 11 kills, 19 digs, four aces and a block in her NCAA Division I volleyball weekend debut (Aug. 30-31). Shehas 12 kills on the season and 23 digs.  
Tevdoradze is from the country of Georgia and is a 2023 NJCAA and AVCA All-American after averaging 3.94 kills per set with a .277 hitting percentage at Miami Dade College (MDC). She also had 35 blocks, 27 aces, 4.51 points per set and 2.69 digs per set last season to help MDC become runner-ups in the NJCAA Championship match.  
In her career at MDC, Tevdoradze averaged 4.10 points, 3.51 kills, a .274 hitting percentage, 2.25 digs per set, 83 total blocks and 41 total aces.

**JOURNEY TO THE AMERICAN DREAM**  
Tevdoradze's journey from Georgia to America is nothing short of remarkable. Faced with challenges like borrowing gear to play, Ana and her family took a leap, moving to Florida with hopes of her playing NCAA Division I Volleyball. Initially told she wasn't ready, mainly due to a language barrier.  
Ana didn't give up. Instead, she tackled a significant hurdle—learning English—by immersing herself in classes and YouTube. Her hard work paid off at Miami Dade College, where she led her team to back-to-back NJCAA Championship matches.  
Now, in Division I, Ana is determined to succeed and make her mark as a professional. Reflecting on her journey, Ana says, "The opportunities I have here are incredible. I won't take them for granted and will work tirelessly to succeed."

**NATIONAL TEAM EXPERIENCE**  
Tevdoradze has played with the Georgian National Team for six years, including in the European Championship Qualifier against Portugal on August 17, 2024. In that match, Tevdoraze was second on the team with nine kills, two blocks and 11 points.  
Tevdoradze was the captain of the Georgian National Team's 16, 17, and 18U teams.

**OUTSIDE CONTRIBUTORS**  
A final contributor on the outside is true freshman Laine Pyles who finished her collegiate weekend debut with seven kills, seven digs, three aces and three blocks (Aug. 30-31). Against Maryland (Aug. 30), Pyles had five kills, two aces, three digs an a block for her most impactful match during opening weekend.

**EXPERIENCED TIGERS**  
The Tigers return eight players from the 2023 roster, but only four played in five sets or more. The production of those four returners represents 48.1 percent of kills and 68.0 percent of blocks from the 2023 season.

NEW LOOK TIGERS

LSU have 10 newcomers on the 2024 roster, including seven true freshmen and three transfers.

PORTAL REPORTS

LSU picked up three players from the transfer portal, including graduate setter Bailey Ortega (Iowa), middle blocker Rumur Rouille (Long Island), and pin hitter Ana Tevdoradze (Miami Dade College).

RUMUR HAS IT

Middle blocker Rumur Rouille is a two-time All-Northeast Conference (NEC) selection at Long Island (LIU). Last season, she helped LIU win its 12th NEC Championship and registered seven blocks in the 2023 NCAA Tournament against No. 1 Nebraska on Dec. 1, 2023.

Rouille enters her final season of eligibility with a career average of 1.17 blocks per set (294 total). She led the NEC in blocks for two consecutive seasons, including last season's 134 total blocks and 1.24 blocks per set. Offensively, she has 288 career kills behind a .249 hitting percentage in 81 matches played.

Rouille was named the 2023-2024 NEC Scholar-Athlete of the Year and is a two-time College Sports Communicator's Academic All-District selection.

INTERNATIONAL TIGERS

Pin hitter Ana Tevdoradze is the first Division I volleyball athlete from the country of Georgia.

Redshirt freshman setter Mika Rome is from Israel. Mika, who entered college with an ACL injury, tore her ACL during the 2024 spring season.

THE NEWCOMERS

The 2024 signing class features true freshmen: middle blocker Jessica Jones, defensive specialist Aly Kirkhodd, and outside hitters Laine Pyles and Bri Watson.

The class is a decorated bunch. Three players (Jones, Kirkhoff, and Watson) were named 2023 AVCA Girls High School All-Americans and Pyles and Watson were tabbed to Volleyball Magazine's Fab 50.

TEAMMATES FOR LIFE

Jessica Jones, Laine Pyles and Bri Watson were teammates before donning the Purple and Gold.

Jones and Watson were club teammates on Drive Nation in 2023.

Watson was also a teammate of Pyles in the Madfrog Volleyball Club, where they won the 2022 National Championship in the USA Volleyball All-Star Tournament.

LOUISIANA GIRLS

After being the only Louisiana native on the 2023 roster, AC Froehlich now has company thanks to freshman defensive specialist Sophie Bonnafee, who is from Covington, La.

Bonnafee is a three-time Louisiana State Champion at Archbishop Hannan High School.

SCHEDULE NOTES

The LSU volleyball team's 27-match regular schedule features 14 home matches, including eight SEC contests. LSU will face 10 opponents who participated in the 2023 NCAA Tournament, including the reigning back-to-back NCAA National Champions and new SEC member, Texas. Four of the Tigers' SEC matches will be televised, with three of them happening at the PMAC, including matches against Texas (Sept. 29), Florida (Oct. 20), and Arkansas (Nov. 17).

2024 SEC PRESEASON POLL

The league coaches picked LSU to finish ninth in the 2024 SEC Preseason Coaches' Poll and accumulated 82 points. New SEC Member and back-to-back National Champion Texas were named the preseason favorites, tallying 196 points and 14 of the 15 first-place votes. Florida finished at No. 3 with 173 points and claimed the final first-place vote. Georgia checked in at No. 4 with 148 points, and Tennessee rounds out the top five with 144 points.

2024 SEC Preseason Coaches Poll

Rank	School	Points
1.	Texas (14)	196
2.	Florida (1)	174
3.	Kentucky	173
4.	Georgia	148
5.	Tennessee	144
6.	Missouri	127
7.	Texas A&M	117
8.	Arkansas	109
9.	LSU	82
10.	Auburn	77
11.	Oklahoma	73
12.	Ole Miss	49
	South Carolina	49
14.	Mississippi St.	42
15.	Alabama	15

MORE CHANGES TO THE SEC

The SEC welcomes Oklahoma University and the University of Texas to the league beginning in the 2024 season. However, that is not the last change to come for the league.

In 2025, Vanderbilt will add volleyball to the SEC, coinciding with the return of the SEC Volleyball Tournament for the first time since 2005. All conference teams will participate, but it has yet to be determined if the tournament will resume following the 2024 or 2025 season.

CHANGES TO THE GAME

A number of notable changes in the sport are in place for the 2024 season. Double touches on the second contact are now permissible, and teams can designate two liberos, but they cannot be on the floor at the same time. The challenge review system has also been changed.

A technique has been adopted for referees to further communicate the category of a challenge. When the second referee accepts a challenge, they will use expedited communication to signal the challenge category (with fingers, one-handed). The categories are:

**Category 1:** Touch. Touches include a ball contacting a player (blocker or defender) before going out of bounds, whether a ball hit into the top of the net was touched by the block, and now includes contacting an opponent above the net, resulting in interference.

**Category 2:** In/Out. This includes challenges on the ball contacting the antenna or a pancake attempt.

**Category 3:** Net Fault. This includes a player contacting the net antenna.

**Category 4:** Attack line fault. This includes a back-row player's take-off point on or in front of the attack line or a libero on or in front of the attack line, using an overhand finger pass to a teammate who completes an attack-hit higher than the top of the net.

**Category 5:** Service foot fault.

## JOHNSON IS BACK HOME



### CAREER HIGHLIGHTS

- **117-104 all-time record** as a head coach (LSU, Georgia Tech)
- **Advanced** LSU to the second round of the NCAA Tournament in 2022 for the first time since 2014.
- **Reached** the NCAA Tournament in 2022 with LSU for the first time in program history since 2017.

### JOHNSON'S NUMBERS

**6** AVCA All-American Selections

**11** AVCA All-Region Selections

**9** All-Conference Selections

### As An Assistant And Player:

- **472-191 record** as assistant at LSU, UK, and Texas
- **5** Final Four Appearances at Texas
- **2** National Championship Appearances at Texas
- **8x** Big 12 Champions at Texas
- **2** Final Four Appearances as a player at LSU
- **4x** SEC Champion as a player at LSU

LSU volleyball head coach Tonya Johnson is in her third season leading the Bayou Bengals in 2024. Johnson has compiled a 27-31 record with an NCAA Tournament appearance with the Tigers and is 112-103 overall in her career as a head coach.

Johnson was a four-year letterwinner for the Tigers (1987-1990) who helped the program reach its first NCAA Final Four appearance in 1990 and won a combined four SEC championships, including two regular-season titles and SEC tournament titles (1989, 1990). Johnson is the sixth head coach in LSU volleyball history.

Since returning to Baton Rouge to lead the program, Johnson has developed four AVCA All-Region selections, including Jurnee Robinson, the third LSU Tiger to earn the AVCA South Region Freshman of the Year Award (2023).

Academics are also a top priority for Johnson. In her tenure, she has coached five College Sports Communicators Academic All-District honorees, and the team has won the U.S. Marines Corp./AVCA Team Academic award in each of her seasons. In the spring of 2024, the volleyball program had a 3.7 GPA, the highest in program history and the highest team GPA in LSU Athletics that semester.

Before leading the LSU program, Johnson had two stints at the University of Texas that spanned 14 years (2003-2008; 2014-2021). During her second stint with the Longhorns, Johnson, who was the associate head coach and recruiting coordinator, was part of five NCAA Final Four teams, including three appearances in the national championship match (2015-2016, 2020).

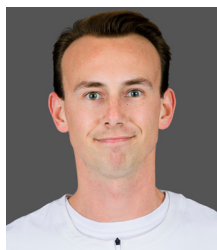
Between her two stints at Texas, Johnson was the head coach at Georgia Tech from 2009-2013. Johnson compiled an overall 85-72 record and led the Yellow Jackets to the 2009 NCAA Tournament. She coached 10 All-ACC selections at Georgia Tech, including four-time All-American Monique Mead.

While at Georgia Tech, Johnson was named the co-head coach of the 2012 U.S. Volleyball National A2 Team that earned the silver medal.

Johnson served as an assistant coach at LSU from 1998-2002 under Fran Flory, the program's all-time wins leader, and was responsible for most of the Tigers' recruiting efforts. Johnson began her coaching career as an assistant under Flory at Kentucky in 1995.



**Jill Wilson**  
Associate Head Coach  
Third Season



**Kevin Inlow**  
Assistant Coach  
Third Season



**Ashley Shook**  
Assistant Coach  
Third Season



**Blair Hiler**  
Director of Operations  
Eighth Season

# 2024 COMBINED STATS

Overall	Conference	Home	Away	Neutral
5 - 1	0 - 0	2 - 1	1 - 0	2 - 0

## Team Box Score

			Attack					Set		Serve			Dig			Blocking							
##	Player	SP	K	K/S	E	TA	PCT	A	A/S	SA	SE	SA/S	RE	DIG	DIG/S	BS	BA	TOT/S	BLK/S	BE	BHE	PTS	
1	Tevdoradze, Ana	20	12	0.60	7	54	.093	1	0.05	4	2	0.20	2	23	1.15	0	1	1	0.05	0	0	16.5	
2	Ortega, Bailey	26	13	0.50	1	23	.522	289	11.12	1	7	0.04	0	59	2.27	2	7	9	0.35	4	1	19.5	
3	Kirkhoff, Aly	25	0	0.00	1	1	-1.000	17	0.68	3	3	0.12	4	60	2.40	0	0	0	0.00	0	0	3.0	
4	Lee, Angelina	26	50	1.92	15	103	.340	1	0.04	0	0	0.00	0	4	0.15	3	24	27	1.04	2	0	65.0	
5	Robinson, Jurnee	26	138	5.31	46	294	.313	11	0.42	9	19	0.35	0	65	2.50	1	14	15	0.58	0	0	155.0	
7	Jones, Jessica	26	43	1.65	11	91	.352	1	0.04	0	2	0.00	0	3	0.12	3	22	25	0.96	4	0	57.0	
8	Hemmings, Ella	24	1	0.04	0	1	1.000	8	0.33	1	11	0.04	2	26	1.08	0	0	0	0.00	0	0	2.0	
11	Pyles, Laine	9	7	0.78	11	40	-.100	1	0.11	3	5	0.33	0	7	0.78	0	3	3	0.33	0	0	11.5	
13	Froehlich, AC	16	45	2.81	18	129	.209	2	0.13	7	8	0.44	0	37	2.31	0	4	4	0.25	3	0	54.0	
18	Nuss, Remi	23	0	0.00	0	0	.000	1	0.04	2	6	0.09	0	8	0.35	0	0	0	0.00	0	0	2.0	
23	Demps, Jade	24	42	1.75	16	130	.200	2	0.08	7	7	0.29	0	61	2.54	0	17	17	0.71	0	0	57.5	
24	Bonnafee, Sophie	1	0	0.00	0	0	.000	0	0.00	0	1	0.00	0	0	0.00	0	0	0	0.00	0	0	0.0	
LSU			26	351	13.50	126	866	.260	334	12.85	37	71	1.42	14	353	13.58	9	92	55	2.12	13	1	443.0
Opponents			26	303	11.65	135	856	.196	275	10.58	14	58	0.54	37	343	13.19	9	86	52	2.00	5	3	369.0

## Team statistics

	LS	OPP
ATTACK		
Kills	351	303
Errors	126	135
Total Attacks	866	856
Attack Pct	.260	.196
Kills/Set	13.50	11.65
SET		
Assists	334	275
Attempts	873	890
Assist Pct	.383	.309
Assists/Set	12.85	10.58
SERVE		
Aces	37	14
Errors	71	58
Attempts	592	521
Serve Pct	.880	.889
Aces/Set	1.42	0.54
SERVE RECEPTIONS		
Errors	14	37
Errors/Set	0.54	1.42
Attempts	463	522
Reception Pct	.970	.997
DEFENSE		
Digs	353	343
Digs/Set	13.58	13.19
BLOCKING		
Block solo	9	9
Block Assist	92	86
Total Blocks	55	52
Blocks/Set	2.12	2.00
Block Errors	13	5
Ball handling errors	1	3
ATTENDANCE		
Total	4221	357
Dates/Avg Per Date	3/1407	1/357
Neutral Site #/Avg	2/143	-
Current win streak	0	-
Home win streak	0	-

## Team Results

Date	Opponent		Score	Score-by-set	Att.
08/30/2024	New Hampshire	W	3-2	23-25,23-25,25-19,25-17,15-8	1100
08/30/2024	Maryland	W	3-1	25-22,22-25,25-20,25-20	1492
08/31/2024	Troy	L	2-3	21-25,25-18,25-8,16-25,23-25	1629
09/05/2024	at Duke	W	3-1	25-23,22-25,25-17,25-23	357
09/06/2024	vs FIU	W	3-2	25-16,21-25,20-25,25-20,15-4	113
09/07/2024	vs Davidson	W	3-0	25-20,25-20,25-17	172

# 2023 COMBINED SEC STATS

Overall	Conference	Home	Away	Neutral
6 - 12	6 - 12	4 - 5	2 - 7	0 - 0

## Team Box Score

			Attack					Set		Serve			Dig			Blocking							
##	Player	SP	K	K/S	E	TA	PCT	A	A/S	SA	SE	SA/S	RE	DIG	DIG/S	BS	BA	TOT/S	BLK/S	BE	BHE	PTS	
1	Hill, Samarah	22	31	1.41	13	92	.196	1	0.05	0	2	0.00	1	21	0.95	0	8	8	0.36	4	0	35.0	
2	Flickinger, Paige	56	55	0.98	29	178	.146	7	0.13	12	20	0.21	15	106	1.89	0	3	3	0.05	1	0	68.5	
4	Lee, Angelina	16	19	1.19	10	50	.180	0	0.00	0	0	0.00	0	8	0.50	2	13	15	0.94	1	0	27.5	
5	Robinson, Jurnee	64	232	3.63	120	613	.183	6	0.09	15	32	0.23	12	136	2.13	11	33	44	0.69	5	1	274.5	
7	Anderson, Bri	26	1	0.04	0	2	.500	18	0.69	6	16	0.23	5	69	2.65	0	0	0	0.00	0	0	7.0	
8	Hemmings, Ella	37	0	0.00	0	0	.000	4	0.11	5	6	0.14	0	13	0.35	0	0	0	0.00	0	0	5.0	
9	Dotson, Sanaa	44	91	2.07	27	277	.231	3	0.07	4	13	0.09	9	48	1.09	0	13	13	0.30	3	0	101.5	
10	Carmichael, Erin	60	2	0.03	0	4	.500	51	0.85	18	26	0.30	9	128	2.13	0	0	0	0.00	0	0	20.0	
11	Anwusi, Anita	66	119	1.80	44	265	.283	3	0.05	15	25	0.23	2	14	0.21	10	53	63	0.95	12	1	170.5	
12	Williams, Alia	1	0	0.00	1	1	-1.000	0	0.00	0	0	0.00	0	0	0.00	0	0	0	0.00	0	0	0.0	
16	Echter, Ellie	48	88	1.83	27	223	.274	1	0.02	0	1	0.00	5	21	0.44	4	19	23	0.48	4	0	101.5	
17	Roberson, Alexis	50	67	1.34	22	164	.274	1	0.02	0	0	0.00	0	12	0.24	5	35	40	0.80	5	1	89.5	
22	Waak, Maddie	66	12	0.18	2	26	.385	437	6.62	11	16	0.17	0	119	1.80	0	5	5	0.08	5	2	25.5	
23	Demps, Jade	62	85	1.37	43	264	.159	11	0.18	1	4	0.02	4	47	0.76	0	20	20	0.32	4	0	96.0	
29	Mitter, Emily	51	0	0.00	0	1	.000	212	4.16	3	13	0.06	0	74	1.45	0	0	0	0.00	0	0	3.0	
LSU		66	802	12.15	338	2160	.215	755	11.44	90	174	1.36	89	816	12.36	32	202	133	2.02	44	5	1,025.0	
Opponents		66	878	13.30	304	2121	.271	812	12.30	89	161	1.35	90	855	12.95	33	230	148	2.24	22	20	1,115.0	

## Team statistics

	LSU	OPP
ATTACK		
Kills	802	878
Errors	338	304
Total Attacks	2160	2121
Attack Pct	.215	.271
Kills/Set	12.15	13.30
SET		
Assists	755	812
Attempts	2171	2129
Assist Pct	.348	.381
Assists/Set	11.44	12.30
SERVE		
Aces	90	89
Errors	174	161
Attempts	1395	1491
Serve Pct	.875	.892
Aces/Set	1.36	1.35
SERVE RECEPTIONS		
Errors	89	90
Errors/Set	1.35	1.36
Attempts	1331	1221
Reception Pct	.933	.999
DEFENSE		
Digs	816	855
Digs/Set	12.36	12.95
BLOCKING		
Block solo	32	33
Block Assist	202	230
Total Blocks	133	148
Blocks/Set	2.02	2.24
Block Errors	44	22
Ball handling errors	5	20
ATTENDANCE		
Total	8857	15593
Dates/Avg Per Date	9/984	9/1733
Neutral Site #/Avg	0/0	-
Current win streak	0	-
Home win streak	0	-

## Team Results

Date	Opponent		Score	Score-by-set	Att.
* 09/22/2023	at Kentucky	L	1-3	25-23,22-25,18-25,13-25	3533
* 09/29/2023	Missouri	W	3-1	20-25,25-14,25-22,25-19	934
* 10/01/2023	Mississippi St.	W	3-1	19-25,25-22,25-20,25-20	1035
* 10/04/2023	Arkansas	L	0-3	20-25,19-25,20-25	502
* 10/08/2023	at Tennessee	L	0-3	15-25,17-25,13-25	2274
* 10/13/2023	Texas A&M	L	1-3	23-25,25-16,21-25,16-25	1078
* 10/15/2023	at Georgia	L	1-3	22-25,28-26,21-25,22-25	1667
* 10/22/2023	at Alabama	W	3-0	25-21,25-23,25-20	822
* 10/27/2023	Kentucky	L	0-3	18-25,24-26,18-25	1340
* 10/29/2023	South Carolina	W	3-0	25-15,25-13,25-22	1109
* 11/01/2023	at Ole Miss	L	2-3	20-25,14-25,26-24,25-20,12-15	673
* 11/05/2023	Alabama	W	3-1	18-25,25-18,25-16,25-16	935
* 11/10/2023	at Florida	L	0-3	17-25,23-25,16-25	3305
* 11/12/2023	at South Carolina	W	3-2	25-22,24-26,21-25,25-19,15-11	1100
* 11/17/2023	Tennessee	L	0-3	18-25,22-25,18-25	879
* 11/19/2023	at Auburn	L	0-3	12-25,14-25,23-25	1529
* 11/22/2023	Georgia	L	1-3	19-25,16-25,25-22,23-25	1045
* 11/25/2023	at Mississippi St.	L	1-3	24-26,25-17,14-25,19-25	690

# 2024 TEAM MATCH-BY-MATCH

Teams	K	E	TA	PCT	AST	SA	SE	RE	DIG	BS	BA	BE	TB	BHE	PTS
LSU	63	25	162	.235	60	10	15	1	63	3	10	4	8.0	0	81.0
New Hampshire	52	25	152	.178	50	1	9	10	65	3	10	1	8.0	1	61.0
LSU	54	27	139	.194	52	7	14	6	60	1	16	0	9.0	1	70.0
Maryland	38	23	125	.120	33	6	12	7	47	1	24	0	13.0	0	57.0
LSU	65	22	160	.269	63	3	19	1	59	2	32	3	18.0	0	86.0
Troy	59	27	159	.201	57	1	12	3	67	3	16	0	11.0	1	71.0
LSU	52	24	157	.178	49	8	13	1	63	0	10	3	5.0	0	65.0
at Duke	50	24	147	.177	44	1	10	8	70	1	16	1	9.0	1	60.0
LSU	68	16	157	.331	63	8	7	4	73	2	12	3	8.0	0	84.0
vs. Florida Int.	63	20	170	.253	51	4	9	8	66	0	14	2	7.0	0	74.0
LSU	49	12	91	.407	47	1	3	1	35	1	12	0	7.0	0	57.0
vs. Davidson	41	16	103	.243	40	1	6	1	28	1	6	1	4.0	0	46.0
LSU															
at #18 Baylor															
LSU															
vs. Samford															
LSU															
Boston College															
LSU															
North Florida															
LSU															
San Diego															
LSU															
Missouri															
LSU															
Texas															
LSU															
at Mississippi St.															
LSU															
at Ole Miss															
LSU															
Oklahoma															
LSU															
Texas A&M															
LSU															
Florida															
LSU															
at Auburn															
LSU															
at Georgia															
LSU															
Alabama															
LSU															
at Tennessee															
LSU															
at Kentucky															
LSU															
South Carolina															
LSU															
Arkansas															
LSU															
at Texas A&M															
LSU															
at Alabama															
LSU Totals	351	126	866	.260	334	37	71	14	353	9	92	13	55.0	1	443.0
Opp. Totals	303	135	856	.196	275	14	58	37	343	9	86	5	52.0	3	369.0

# 2024 MATCH-BY-MATCH LEADERS

Opponent	Kills	Assists	Aces	Digs	Blocks
New Hampshire	Robinson (25)	Ortega (55)	Robinson (4)	Robinson (13)	Lee (5)
Maryland	Robinson (28)	Ortega (43)	Demps (3)	Robinson (12)	Lee (7)
Troy	Robinson (20)	Ortega (58)	Demps (1)	Kirkhoff (16)	Jones (12)
			Robinson (1)		
			Tevdoradze (1)		
at Duke	Froehlich (14)	Ortega (44)	Froehlich (4)	Demps (17)	Demps (4) Lee (4)
vs. Florida Int.	Robinson (28)	Ortega (50)	Froehlich (3)	Ortega (17)	Jones (4)
vs. Davidson	Robinson (24)	Ortega (39)	Kirkhoff (1)	Robinson (10)	Jones (4)
at #18 Baylor					
vs. Samford					
Boston College					
North Florida					
San Diego					
Missouri					
Texas					
at Mississippi St.					
at Ole Miss					
Oklahoma					
Texas A&M					
Florida					
at Auburn					
at Georgia					
Alabama					
at Tennessee					
at Kentucky					
South Carolina					
Arkansas					
at Texas A&M					
at Alabama					

## 2024 INDIVIDUAL MATCH HIGHS

<b>KILLS</b>
28, Robinson, 2x, vs. Troy (Aug. 31), FIU (Sept. 6)
<b>ATTACKS</b>
66, Robinson, vs. FIU (Sept. 6)
<b>HITTING % (MIN. 10K)</b>
.545, Demps, vs. Davidson (Sept. 7)
<b>ASSISTS</b>
58, Ortega, vs. Troy (Aug. 31)
<b>ACES</b>
4, Twice (Robinson, Froehlich)
<b>DIGS</b>
17, Twice (Demps, Ortega)
<b>BLOCK SOLOS</b>
2, Twice (Jones, Ortega)
<b>BLOCK ASSISTS</b>
10, Jones, vs. Troy (Aug. 31)
<b>TOTAL BLOCKS</b>
12, Jones, vs. Troy (Aug. 31)

## 2024 TEAM HIGHS

<b>KILLS</b>
68, vs. FIU (Sept. 6)
<b>ATTACKS</b>
162, vs. New Hampshire (Aug. 30)
<b>HITTING %</b>
.407, vs. Davidson (Sept. 7)
<b>ASSISTS</b>
63, vs. Troy (Aug. 31)
63, vs. FIU (Sept. 6)
<b>ACES</b>
10, vs. New Hampshire (Aug. 30)
<b>DIGS</b>
73, vs. FIU (Sept. 6)
<b>BLOCKS</b>
18.0, vs. Troy (Aug. 31)

## 2024 MATCH STAT LEADERS

<b>Times a player led the team in a category in a single match (ties count as leaders):</b>	
<b>KILLS</b>	
Robinson - 5	Froehlich - 1
<b>ASSISTS</b>	
Ortega - 6	
<b>ACES</b>	
Demps - 2	Froehlich - 2
Robinson - 2	Kirkhoff - 1
Tevdoradze - 1	
<b>DIGS</b>	
Robinson - 3	Demps - 1
Kirkhoff - 1	Ortega - 1
<b>BLOCKS</b>	
Jones - 3	Lee - 3
Demps - 1	

## LAST TIME LSU...

### LSU lost the first set in a win

8/30/24, vs. New Hampshire [W, 3-2]

### LSU lost the first 2 sets in a win

8/30/24, vs. New Hampshire [W, 3-2]

### LSU was down 2-1 in a win

9/6/24, vs. Florida International [W, 3-2]

### LSU won the first set in a loss

9/22/23, at No. 22 Kentucky [L, 3-1]

### LSU won the first 2 sets in a loss

10/27/17, vs. No. 6 Kentucky [L, 3-2]

### LSU was up 2-1 in a loss

8/31/24, vs. Troy [L, 3-2]

### LSU beat a ranked opponent

9/24/22, at No. 15 Kentucky [W, 3-2]

### LSU beat a ranked opponent at home

9/21/22, No. 20 Arkansas [W, 3-2]

### LSU beat a ranked opponent on the road

9/24/22, at No. 15 Kentucky [W, 3-2]

### LSU beat a ranked opponent at a neutral site

12/6/13, vs. No. 24 Michigan [W, 3-2]

### LSU beat a Top 10 opponent

11/13/09, at No. 10 Florida [W, 3-1]

### HITTING PERCENTAGE

#### LSU hit over .400 as a team

.407 [49-12-91], vs. Davidson [9/7/24]

#### LSU hit over .500 as a team

.524 [51-8-82], vs. Grambling State [9/2/11]

#### LSU hit over .500 as a team in a set

.500 [8-0-16], vs. Florida International [8/6/24]

#### LSU's opponent hit over .300 as a team

.351 [69-16-151], vs. Georgia [11/22/23]

#### LSU held an opponent under .100 hitting

.092 [25-18-76], vs. South Carolina [10/29/23]

#### LSU hit less than .200

.178 [52-24-157], at Duke [9/5/24]

#### LSU hit less than .100

.039 [27-23-102], at Auburn [11/19/23]

#### LSU hit less than .200 & won

.178 [52-24-157], at Duke [9/5/24]

#### LSU hit less than .150 & won

.135 [58-34-178], at Alabama [10/19/22]

#### LSU outthit the opponent & lost

.269-.201, vs. Troy [8/31/24]

#### LSU was outthit & won

.234-.214, at Tennessee [11/24/17]

### KILLS

#### LSU had 60 + kills

63, vs. FIU [9/6/24]

#### LSU had 80 + kills

80, vs. Ole Miss [10/23/11]

### ASSISTS

#### LSU had 60 + assists

63, vs. Troy [8/31/24]

#### LSU had 80 + assists

80, at Tennessee [10/12/07]

### DIGS

#### LSU had 80 + digs

96, vs. Mississippi State [10/29/22]

#### LSU had 100 + digs

108, vs. Mississippi State [10/30/22]

### BLOCKS

#### LSU had 15-19.5 blocks

18.0, vs. Troy [8/31/24]

#### LSU had 20 + blocks

20.0, vs. Troy [9/18/21]

#### LSU was out-blocked & won

9.0-5.0, at Duke [9/5/24]

### ACES

#### LSU had 10 + aces

10, vs. New Hampshire [8/30/24]

## LAST TIME A TIGER...

### KILLS

#### Five LSU players had 10+ kills

Taylor Bannister [22], Toni Rodriguez [16], Whitney Foreman [12], Milan Stokes [11], Olivia Beyer [11]

#### Four LSU players had 10+ kills

vs. Troy [8/31/24]

Jurnee Robinson [20], Jade Demps [13], Jessica Jones [12], Angelina Lee [10]

#### Three LSU players had 15+ kills

at Tennessee [11/24/17]

Taylor Bannister [16], Jacqui Armer [15], Toni Rodriguez [15]

#### No LSU players had 10+ kills

at Auburn [11/19/23]

#### An LSU player had 20 or more kills

Jurnee Robinson [24] vs. Davidson [9/7/24]

#### An LSU player had 25 or more kills

Jurnee Robinson [28] vs. FIU [9/6/24]

#### An LSU player had 30 or more kills

Taylor Bannister [30] vs. Georgia [03/19/21]

#### An LSU player had 40 or more kills

Monique Adams [43], No. 10 Florida [12/14/91]

#### An LSU player had 20 + kills and 20 + digs

Angela Bensend [20 kills, 26 digs], at TCU [09/03/10]

#### An LSU player had back-to-back double-doubles

Jurnee Robinson

[4; 2024 Season] 25 kills, 13 digs [vs. New Hampshire, 8/30/24];

28 kills, 12 digs [vs. Maryland, 8/30/24]; 20 kills, 11 digs [vs. Troy, 8/31/24];

13 kills, 11 digs [at Duke, 9/5/24]

#### An LSU player had 5 straight double-doubles

Ella Larkin

[5; 2021 Season] 44 assists, 18 digs [at Ole Miss, 11/11/21];

49 assists, 18 digs [at Ole Miss, 11/12/21]; 39 assists, 10 digs [Texas A&M, 11/21/21]

45 assists, 14 digs [at Georgia, 11/26/21]; 51 assists, 11 digs [at Georgia, 11/27/21]

#### An LSU player had a triple-double

Malorie Pardo

40 assists, 11 digs, 10 kills, vs. South Florida [08/29/14]

### ATTEMPTS

#### An LSU player had 50 or more attempts

Jurnee Robinson [52], vs. Troy [8/31/24]

#### An LSU player had 60 or more attempts

Jurnee Robinson [66], vs. Florida International [9/6/24]

#### An LSU player had 70 or more attempts

Taylor Bannister [71], at Texas A&M [10/18/20]

### HITTING PERCENTAGE [10 OR MORE ATTEMPTS]

#### An LSU player had a .400 hitting percentage

Jessica Jones [7-0-15, .467], at Duke [9/5/24]

#### An LSU player had a .500 hitting percentage

Jade Demps [6-0-11, .545], vs. Davidson [9/7/24]

Jurnee Robinson [24-3-41, .512], vs. Davidson [9/7/24]

#### An LSU player had a .600 hitting percentage

Anita Anwusi [16-1-22, .682], at South Carolina [11/12/23]

#### An LSU player had a .700 hitting percentage

Anita Anwusi [8-1-10, .700], at Mississippi State [10/2/21]

#### An LSU player had an .800 hitting percentage

Malorie Pardo [10-0-12, .833] vs. South Florida [8/29/14]

#### An LSU player had a .900 hitting percentage

Allee Morris [10-0-11, .909], vs. Texas A&M [11/21/21]

### ASSISTS

#### An LSU player had 50 or more assists

Bailey Ortega [50], vs. Florida International [9/6/24]

#### An LSU player had 60 or more assists

Lindsay Flory [60], vs. South Carolina [11/18/18]

#### An LSU player had 70 or more assists

Daniela Romero [74], at No. 13 Tennessee [09/15/06]

#### An LSU player had 80+ assists

Lauren O'Connor [84], at Mississippi State [11/08/98]

#### Two LSU players had 20+ assists

Maddie Waak [26] & Emily Mitter [21], vs. Georgia [11/22/23]

### DIGS

#### Five LSU players had 10 + digs

vs. Mississippi State [10/30/22]

Ella Larkin [31], Jill Bohnet [21], Paige Flickinger [18], Maddie Waak [17], Sanaa Dotson [12]

#### Three LSU players had 15 + digs

vs. Mississippi State [10/30/22] (4)

Ella Larkin [31], Jill Bohnet [21], Paige Flickinger [18], Maddie Waak [17]

#### Two LSU players had 20 + digs

Ella Larkin [31], Jill Bohnet [21] vs. Mississippi State [10/30/22]

#### An LSU player recorded 20-24 digs

Maddie Waak [20], vs. ULL [9/6/23]

#### An LSU player recorded 25-29 digs

Jill Bohnet [26], Ella Larkin [22], vs. Mississippi State [10/29/22]

#### An LSU player recorded 30-39 digs

Ella Larkin [31], vs. Mississippi State [10/30/22]

#### An LSU player recorded 40 + digs

Meghan Mannari [40], at Auburn [10/19/12]

### BLOCKS

#### An LSU player had 7-9 blocks

Angelina Lee [7], vs. Maryland [8/30/24]

#### An LSU player had 10 + blocks

Jessica Jones [12], vs. Troy [8/31/24]

#### An LSU player had 4 solo blocks

Sydney Mukes [4], at Ole Miss [10/7/18]

#### An LSU player had 5 + solo blocks

Ivana Kuzmic [6], Houston [11/27/04]

### ACES

#### An LSU player had 5 aces

Paige Flickinger [5], vs. South Carolina [10/29/23]

#### An LSU player had 6 aces

Anita Anwusi [6], vs. No. 8 Tennessee [11/17/23]

#### An LSU player had 7 + aces

Kylie DeBerg [7], vs. Texas A&M [11/21/21]

#### An LSU player had 10 + aces

Wendy Stammer [10], Texas Tech [09/14/86]

#### Three LSU players had multiple aces

AC Frohlich [3], Jade Demps [2],

Jurnee Robinson [2], vs. Florida International [9/6/24]

#### Five LSU players had multiple aces

Erin Carmichael [5], Jade Demps [3],

Paige Flickinger [2], Robinson [2], Maddie Waak [2], vs. Ball State [9/3/23]

#### LSU had 0 aces as a team

at No. 12 Tennessee [10/8/23]

# TIGER FINDINGS: PLAYER FACTS

## SOPHIE BONNAFFEE

### SERVE SONG: Supafly - Cootie ft. BIC Fizzle

Was coached by her mother all four years of high school and won three out of four state championships together...loves old music and country music...wants to learn how to play the piano...favorite sports other than volleyball is basketball or baseball...favorite animals are dogs or hippos.

## SHEA BRUNTMYER

### SERVE SONG: KEHLANI - Jordan Adetunji

Desires to become a professional volleyball player and one day be a coach...developed a love for heights after jumping of a ski lift 40-feet in the air...used to do theatre, sing, and act, and was a competitor swimmer...Zebras are her favorite animal...plays two instruments...favorite Bible verse is Jeremiah 29:11.

## MACKENZIE BOYER

### SERVE SONG: Powerglide - Rae Sremmurd

Wants a career in media marketing...Would love to live in Europe...desired to be on TV...would have loved to meet Amelia Earhart who is the first woman to fly solo across the Atlantic Ocean...before playing volleyball, Boyer was a swimmer...father, Brad Boyer played basketball at Air Force.

## JADE DEMPS

### SERVE SONG: Jump Around - House of Pain

Wants to be a veterinarian...attended Broughton High School in North Carolina, the same high school as Pete Maravich...surprisingly on her bucket list, she wants to steal the Declaration of Independence (inspired by movie National Treasure?)...wants to meet the comedy duo Rhett and Link...the Golden Tiger is her favorite animal...was a member of Wisconsin's 2021 National Championship team...mother Keisha Demps and father Thomas Demps III played volleyball and football at Arizona.

## AC FROEHLICH

### SERVE SONG: Style (Taylor's Version) - Taylor Swift

Another aspiring veterinarian...would like to meet Taylor Swift...was a member of St. Thomas Moore High School 2022 State Championship team and Louisiana Gatorade Player of the Year.

## ELLA HEMMINGS

### SERVE SONG: S&M - Rihanna

Wants to live in New Zealand or Greece...would love to meet Rihanna...favorite type of animal is an elephant...does not like many fruit aside from grapes and apples.

## JESSICA JONES

### SERVE SONG: Father Stretch My Hands pt. 1 - Kanye West

Has a farm in Nebraska where all of her family is from...everyone in her family is an engineer except her mom...is majoring in mechanical engineering...favorite sport other than volleyball is softball...played softball for seven years prior to volleyball...would love to learn how to speak another language...entire playlist is Drake so its probably Drake over Kendrick Lamar for her.

## ALY KIRKHOFF

### SERVE SONG: Big League - Yo Gotti, CMG The Label

Wants to be either a director of operations, project manager, or work in supply chain management...very supsrtitous and trys to plan out everyday...outside of volleyball, she likes and use to play softball, and believes the Indianapolis 500 is the best day of the year...her grandfather Bob Kirkhoff, who she shared a birthday with, is in the Indiana Basketball Hall of Fame...has an extra bone in her foot...favorite fictional character is Joy from Inside Out.

## ANGELINA LEE

### SERVE SONG: Let's Go - Key Clock

Wants to be a software engineer or software developer at a space station...her favorite snack is brownie brittle...wants to learn how to swim but don't ask her to jump off the diving board, she has a fear of heights...helped lead Farmersville High School in Texas to a 2022 Area Championship title.

## MADISON MARTIN

### SERVE SONG: Don't Stop the Party - Pitbull, TJR

Aspires to become a doctor specializing in oncology or dermatology...passed the MCAT this summer...proud of her mother's nine-year cancer free anniversary...she use to travel the country and compete in synchronized swimming...is also a spanish minor.

## REMI NUSS

### SERVE SONG: Headlines - Drake

Wants a career as a sports psychologist...would love to meet Michael Jordan...before volleyball, she won a competitive cheerleading national championship in the first grade...was the chief photographer for her high school newspaper...gone conch and lobster diving...when she was younger, she wanted to be a dinosaur when she grew up...Iron Man is her favorite superhero.

## BAILEY ORTEGA

### SERVE SONG: Imma Be - Black Eyed Peas

Wants to go pro for volleyball and then a Division I Head Coach...despite basketball being her favorite sport and attending Iowa, she still chose LSU...would love to meet Princess Diana because of her positive impact on people and how she treated others...would love to learn how to fly a plane...grew up singing and dancing...would be Moana if she could.

## LAINEE PYLES

### SERVE SONG: Mask Off - Future

Wants to be an anesthesiologist...would have liked to meet Kobe Bryant...wants to be trilingual...although she is shy, she would love to be Superwoman...her favorite subject is math...secretly wants to be a setter.

## JURNEE ROBINSON

### SERVE SONG: Mr. Gaulden - YoungBoy Never Broke Again

Wants to own her own business surrounding athletic wear...loves to be around toddlers...favorite type of animals are dolphins...wants to meet Beyonce...father, Jonathan Robinson played football at Presbyterian College.

## MIKA ROME

### SERVE SONG: Dance The Night - Dua Lipa

Has an interest in engineering new medicine...from Israel and played for the Israeli National Team...has also served in the Israeli Defense Forces...favorite type of animal is a Tiger...her brother Segev is the Israeli Junior Champion in squash.

## RUMUR ROUILLE

### SERVE SONG: Rumor Has It - Adele

Is all about San Diego...wants to be a sports journalist or broadcaster, specifically for the San Diego Padres...if she could live anywhere, it would be on Coronado Island in San Diego...a lifetime goal for her is to open a coffee shop in guess where...San Diego...has published two poetry books...her middle name, Isabella Amidala was inspired by Star Wars...loves to watch basketball and loves hedge hogs!

## ANA TEVDORADZE

### SERVE SONG: N/A

Is the first volleyball Division I athlete from the country of Georgia...desires to play volleyball professionally for a few years, become a coach, and establish her volleyball academy in Georgia...also wants to open numerous Georgian food restaurants in America...claims not to be superstitious, but always enters the volleyball court with her right foot...would love to live in Milan because it's not busy and has a high fashion culture...likes tennis and basketball, her favorite animal is a Tiger and would be Mulan if she was a fictional character.

## BRI WATSON

### SERVE SONG: Telfy - Maiya The Don

Would like to live in Switzerland... favorite sport outside of volleyball is basketball...would love to have Michael Jordan as a mentor...used to play the flute and would like to learn how to play the piano...her favorite food is Italian food...loves learning about history, especially World Wars...if she could be any fictional character, it would be Hermione Granger from Harry Potter.



# MACKENZIE BOYER

# 0

Middle Blocker • 6-3 • Redshirt Freshman • HS • Austin, Texas (Vandegrift HS)

## SEASON HIGHS

Kills	NA
Attacks	NA
Hit % (Min. 10 att)	NA
Assists	NA
Aces	NA
Digs	NA
Total Blocks	NA
Block Solos	NA
Block Assists	NA

## CAREER HIGHS

Kills	NA
Attacks	NA
Hit % (Min. 10 att)	NA
Assists	NA
Aces	NA
Digs	NA
Total Blocks	NA
Block Solos	NA
Block Assists	NA

## [Complete bio](#)

### Redshirt Freshman Season (2024)

- Redshirt the 2023 season.
- Ranked No. 29 in the state of Texas in 2021 with 132 total blocks.
- Helped Vandegrift win its district in 2021 with a 39-10 record and placed 5th in the State Tournament.

## 2024 SEASON MATCH-BY-MATCH

## BOYER'S CAREER STATS



# ANA TEVDORADZE

1

Outside Hitter/Right Side • 6-3 • Junior • TR • Tbilisi, Georgia (Miami Dade College)

## SEASON HIGHS

Kills	10 vs. New Hampshire (08/30/24)
Attacks	36 vs. New Hampshire (08/30/24)
Hit % (Min. 10 att)	.222 vs. New Hampshire (08/30/24)
Assists	1 vs. Maryland (08/30/24)
Aces	3 vs. New Hampshire (08/30/24)
Digs	8 vs. Maryland (08/30/24)
Total Blocks	1 vs. Maryland (08/30/24)
Block Solos	N/A
Block Assists	1 vs. Maryland (08/30/24)

## CAREER HIGHS

Kills	10 vs. New Hampshire (08/30/24)
Attacks	36 vs. New Hampshire (08/30/24)
Hit % (Min. 10 att)	.222 vs. New Hampshire (08/30/24)
Assists	1 vs. Maryland (08/30/24)
Aces	3 vs. New Hampshire (08/30/24)
Digs	8 vs. Maryland (08/30/24)
Total Blocks	1 vs. Maryland (08/30/24)
Block Solos	N/A
Block Assists	1 vs. Maryland (08/30/24)

## Complete bio

### Junior Season (2024)

- Logged 10 kills and three aces in NCAA Division I debut.
- Is the first NCAA Division I volleyball athlete from the country of Georgia.
- Has played with Georgian National Team multiple times, including in August 2024 at the European Championship Qualifier.
- Is a 2023 NJCAA and AVCA All-American at Miami Dade College (MDC)
- Averaged 4.10 points and 3.51 kills per set, with 83 blocks, 41 aces, and 2.25 digs per set at MDC.

## 2024 SEASON MATCH-BY-MATCH

		Attack					Set			Serve				Recept			Blocking					Team			
Date	Opponent	SP	K	E	TA	PCT	A	TA	PCT	SA	SE	TA	PCT	RE	TA	PCT	DIG	BS	BA	BE	TOTAL	BHE	POINTS	HIT%	SCORE
08/30/2024	New Hampshire	5	10	2	36	.222	0	4	.000	3	1	19	.947	0	16	1.000	4	0	0	0	0.0	0	13.0	.235	3-2
08/30/2024	Maryland	*4	0	3	8	-.375	1	3	.333	0	1	4	.750	0	10	1.000	8	0	1	0	1.0	0	0.5	.194	3-1
08/31/2024	Troy	*5	1	2	7	-.143	0	3	.000	1	0	5	1.000	0	10	1.000	7	0	0	0	0.0	0	2.0	.269	2-3
09/05/2024	at Duke	4	0	0	1	.000	0	3	.000	0	0	0	.000	1	12	.917	2	0	0	0	0.0	0	0.0	.178	3-1
09/06/2024	vs FIU	2	1	0	2	.500	0	0	.000	0	0	0	.000	1	6	.833	2	0	0	0	0.0	0	1.0	.331	3-2
Totals		20	12	7	54	.093	1	13	.077	4	2	28	.929	2	54	.963	23	0	1	0	1.0	0	16.5		

### Player Averages

Sets Played	Kills per set	Assists per set	Service aces per set	Digs per set	Blocks per set	Points per set
20	0.60	0.05	0.20	1.15	0.05	0.83

## TEVDORADZE'S CAREER STATS

SEASON	TEAM	SM-MP	K	K/S	E	TA	PCT	A	A/S	SA	SA/S	SE	DIG	D/S	RE	BS	BA	TB	B/S	BE	BHE	PTS	PTS/S
2024-25	LS	20-5	12	0.60	7	54	.093	1	0.05	4	0.20	2	23	1.15	2	0	1	1	0.05	0	0	16.5	0.83
TOTAL		20 - 5	12	0.60	7	54	.093	1	0.05	4	0.20	2	23	1.15	2	0	1	1	0.05	0	0	16.5	0.83



# BAILEY ORTEGA

2

Setter • 5-9 • Graduate • TR • Davenport, Iowa (Iowa)

### SEASON HIGHS

Kills	4 vs. New Hampshire (08/30/24)
Attacks	7 vs. New Hampshire (08/30/24)
Hit % (Min. 10 att)	NA
Assists	58 vs. Troy (08/31/24)
Aces	1 at Duke (09/05/24)
Digs	17 vs. Florida International (09/06/24)
Total Blocks	4 vs. Troy (08/31/24)
Block Solos	NA
Block Assists	4 vs. Troy (08/31/24)

### CAREER HIGHS

Kills	4 vs. New Hampshire (08/30/24)
Attacks	10 vs. Michigan St. (10/14/23)*
Hit % (Min. 10 att)	.000 vs. Michigan St. (10/14/23)*
Assists	58 vs. Troy (08/31/24)
Aces	3 vs. No. 11 Penn State (10/13/23)*
Digs	17 vs. Florida International (09/06/24)
Total Blocks	4 vs. Troy (08/31/24)
Block Solos	1 at Michigan (11/03/23)*
Block Assists	4 vs. Troy (08/31/24)

\* Played at Iowa.

### Complete bio

#### Graduate Season (2024)

- Ranks No. 2 in the nation with 289 assists and No. 9 with 11.12 assists per set.
- Registered her 10th career double-double in first match as an LSU Tiger
- Had a career-highs of 58 assists and four blocks vs. Troy (Aug. 31), and four kills vs. New Hampshire (Aug. 30).
- Has three 50+ assists matches in first six matches of the aseason and 2,463 career assists.
- Has her own podcast as part of the Hey Fightin' Podcast Network titled Geaux Big with B.

### 2024 SEASON MATCH-BY-MATCH

Date	Opponent	SP	Attack				Set			Serve			Receipt			Blocking				Team					
			K	E	TA	PCT	A	TA	PCT	SA	SE	TA	PCT	RE	TA	PCT	DIG	BS	BA	BE	TOTAL	BHE	POINTS	HIT%	SCORE
08/30/2024	New Hampshire	*5	4	0	7	.571	55	131	.420	0	2	12	.833	0	0	.000	11	0	0	1	0.0	0	4.0	.235	3-2
08/30/2024	Maryland	*4	2	0	3	.667	43	117	.368	0	1	18	.944	0	0	.000	8	0	1	0	1.0	1	2.5	.194	3-1
08/31/2024	Troy	*5	3	0	4	.750	58	134	.433	0	2	13	.846	0	0	.000	7	0	4	2	4.0	0	5.0	.269	2-3
09/05/2024	at Duke	*4	3	0	5	.600	44	129	.341	1	1	14	.929	0	0	.000	8	0	0	1	0.0	0	4.0	.178	3-1
09/06/2024	vs FIU	*5	0	1	3	-.333	50	115	.435	0	0	9	1.000	0	1	1.000	17	2	0	0	2.0	0	2.0	.331	3-2
09/07/2024	vs Davidson	*3	1	0	1	1.000	39	73	.534	0	1	7	.857	0	0	.000	8	0	2	0	2.0	0	2.0	.407	3-0
Totals		26	13	1	23	.522	289	699	.413	1	7	73	.904	0	1	1.000	59	2	7	4	9.0	1	19.5		

#### Player Averages

Sets Played	Kills per set	Assists per set	Service aces per set	Digs per set	Blocks per set	Points per set
26	0.50	11.12	0.04	2.27	0.35	0.75

### ORTEGA'S CAREER STATS

SEASON	TEAM	SM-MP	K	K/S	E	TA	PCT	A	A/S	SA	SA/S	SE	DIG	D/S	RE	BS	BA	TB	B/S	BE	BHE	PTS	PTS/S
2020-21	Iowa	74-20	3	0.04	2	10	.100	387	5.23	19	0.26	29	98	1.32	0	0	1	1	0.01	0	3	22.5	0.30
2021-22	Iowa	107-30	11	0.10	6	56	.089	838	7.83	11	0.10	30	201	1.88	1	0	9	9	0.08	3	8	26.5	0.25
2022-23	Iowa	86-27	10	0.12	3	36	.194	357	4.15	4	0.05	3	93	1.08	0	0	1	1	0.01	2	2	14.5	0.17
2023-24	Iowa	111-32	21	0.19	6	72	.208	592	5.33	8	0.07	2	182	1.64	0	1	3	4	0.04	2	10	31.5	0.28
2024-25	LS	26-6	13	0.50	1	23	.522	289	11.12	1	0.04	7	59	2.27	0	2	7	9	0.35	4	1	19.5	0.75
TOTAL FOR LS		26 - 6	13	0.50	1	23	.522	289	11.12	1	0.04	7	59	2.27	0	2	7	9	0.35	4	1	19.5	0.75
TOTAL		404 - 115	58	0.14	18	197	.203	2463	6.10	43	0.11	71	633	1.57	1	3	21	24	0.06	11	24	114.5	0.28



# ALY KIRKHOFF

3

Defensive Specialist/Libero • 5-6 • Freshman • HS • Indianapolis, Ind. (Roncalli HS)

### SEASON HIGHS

Kills	NA
Attacks	1 at Duke (09/05/24)
Hit % (Min. 10 att)	NA
Assists	8 vs. FIU (09/06/24)
Aces	1, Three Times
Digs	16 vs. Troy (08/31/24)
Total Blocks	NA
Block Solos	NA
Block Assists	NA

### CAREER HIGHS

Kills	NA
Attacks	1 at Duke (09/05/24)
Hit % (Min. 10 att)	NA
Assists	8 vs. FIU (09/06/24)
Aces	1, Three Times
Digs	16 vs. Troy (08/31/24)
Total Blocks	NA
Block Solos	NA
Block Assists	NA

### Complete bio

#### Freshman Season (2024)

- On a three-match streak with an ace. First career ace was match-winning point vs. Duke (Sept. 5).
- Led LSU with 16 digs in the five-set thriller vs. Troy (Aug. 31).
- Is an AVCA High School All-American.
- Grandfather Bob Kirkhoff is in the Indiana Basketball Hall of Fame as a high school basketball coach.

### 2024 SEASON MATCH-BY-MATCH

		Attack					Set			Serve			Recept			Blocking				Team					
Date	Opponent	SP	K	E	TA	PCT	A	TA	PCT	SA	SE	TA	PCT	RE	TA	PCT	DIG	BS	BA	BE	TOTAL	BHE	POINTS	HIT%	SCORE
08/30/2024	New Hampshire	*4	0	0	0	.000	1	7	.143	0	1	8	.875	0	3	1.000	4	0	0	0	0.0	0	0.0	.235	3-2
08/30/2024	Maryland	4	0	0	0	.000	3	8	.375	0	0	0	.000	1	5	.800	10	0	0	0	0.0	0	0.0	.194	3-1
08/31/2024	Troy	5	0	0	0	.000	0	5	.000	0	2	13	.846	0	5	1.000	16	0	0	0	0.0	0	0.0	.269	2-3
09/05/2024	at Duke	4	0	1	1	-1.000	0	7	.000	1	0	10	1.000	0	0	.000	13	0	0	0	0.0	0	1.0	.178	3-1
09/06/2024	vs FIU	5	0	0	0	.000	8	20	.400	1	0	24	1.000	2	14	.857	11	0	0	0	0.0	0	1.0	.331	3-2
09/07/2024	vs Davidson	3	0	0	0	.000	5	13	.385	1	0	16	1.000	1	17	.941	6	0	0	0	0.0	0	1.0	.407	3-0
Totals		25	0	1	1	-1.000	17	60	.283	3	3	71	.958	4	44	.909	60	0	0	0	0.0	0	3.0		

#### Player Averages

Sets Played	Kills per set	Assists per set	Service aces per set	Digs per set	Blocks per set	Points per set
25	0.00	0.68	0.12	2.40	0.00	0.12

### KIRKHOFF'S CAREER STATS

SEASON	TEAM	SM-MP	K	K/S	E	TA	PCT	A	A/S	SA	SA/S	SE	DIG	D/S	RE	BS	BA	TB	B/S	BE	BHE	PTS	PTS/S
2024-25	LS	25-6	0	0.00	1	1	-1.000	17	0.68	3	0.12	3	60	2.40	4	0	0	0	0.00	0	0	3.0	0.12
TOTAL		25 - 6	0	0.00	1	1	-1.000	17	0.68	3	0.12	3	60	2.40	4	0	0	0	0.00	0	0	3.0	0.12



# ANGELINA LEE

# 4

Middle Blocker • 6-2 • Sophomore • 1L • Long Island, N.Y. (Farmersville HS)

## SEASON HIGHS

Kills	10, Three Times
Attacks	21 vs. New Hampshire (08/30/24)
Hit % (Min. 10 att)	.500 vs. FIU (09/06/24)
Assists	1 at Duke (09/05/24)
Aces	NA
Digs	2 vs. New Hampshire (08/30/24)
Total Blocks	7 vs. Maryland (08/30/24)
Block Solos	1, Three Times
Block Assists	6 vs. Troy (08/31/24) vs. Maryland (08/30/24)

## CAREER HIGHS

Kills	10, Three Times
Attacks	21 vs. New Hampshire (08/30/24)
Hit % (Min. 10 att)	.500 vs. FIU (09/06/24)
Assists	1 at Duke (09/05/24)
Aces	NA
Digs	4 vs. No. 13 Arkansas (10/4/23)
Total Blocks	7 vs. Maryland (08/30/24)
Block Solos	1, Seven Times
Block Assists	6 Three Times

## Complete bio

### Sophomore Season (2024)

- Leads the team with 1.04 blocks per set and 27 total blocks.
- Recorded a career-high seven blocks vs. Maryland (Aug. 30).
- Turned in a career-high 10 kills twice on 2024 opening weekend behind a .327 hitting percentage.
- Led the team last season with 0.92 blocks per set over 11 matchees, and added 48 kills.

## 2024 SEASON MATCH-BY-MATCH

			Attack				Set		Serve				Recept				Blocking				Team				
Date	Opponent	SP	K	E	TA	PCT	A	TA	PCT	SA	SE	TA	PCT	RE	TA	PCT	DIG	BS	BA	BE	TOTAL	BHE	POINTS	HIT%	SCORE
08/30/2024	New Hampshire	*5	10	5	21	.238	0	2	.000	0	0	0	.000	0	0	.000	2	1	4	1	5.0	0	13.0	.235	3-2
08/30/2024	Maryland	*4	8	3	17	.294	0	1	.000	0	0	0	.000	0	0	.000	0	1	6	0	7.0	0	12.0	.194	3-1
08/31/2024	Troy	*5	10	2	17	.471	0	2	.000	0	0	0	.000	0	0	.000	0	0	6	0	6.0	0	13.0	.269	2-3
09/05/2024	at Duke	*4	6	2	18	.222	1	1	1.000	0	0	0	.000	0	0	.000	1	0	4	1	4.0	0	8.0	.178	3-1
09/06/2024	vs FIU	*5	10	1	18	.500	0	1	.000	0	0	0	.000	0	1	1.000	1	0	2	0	2.0	0	11.0	.331	3-2
09/07/2024	vs Davidson	*3	6	2	12	.333	0	1	.000	0	0	0	.000	0	1	1.000	0	1	2	0	3.0	0	8.0	.407	3-0
Totals			26	50	15	103	.340	1	8	.125	0	0	0	.000	0	2	1.000	4	3	24	2	27.0	0	65.0	

### Player Averages

Sets Played	Kills per set	Assists per set	Service aces per set	Digs per set	Blocks per set	Points per set
26	1.92	0.04	0.00	0.15	1.04	2.50

## LEE'S CAREER STATS

SEASON	TEAM	SM-MP	K	K/S	E	TA	PCT	A	A/S	SA	SA/S	SE	DIG	D/S	RE	BS	BA	TB	B/S	BE	BHE	PTS	PTS/S
2023-24	LS	37-11	48	1.30	21	120	.225	0	0.00	0	0.00	0	13	0.35	0	4	30	34	0.92	3	0	67.0	1.81
2024-25	LS	26-6	50	1.92	15	103	.340	1	0.04	0	0.00	0	4	0.15	0	3	24	27	1.04	2	0	65.0	2.50
TOTAL			63	1.56	36	223	.278	1	0.02	0	0.00	0	17	0.27	0	7	54	61	0.97	5	0	132.0	2.10



# JURNEE ROBINSON

5

Outside Hitter • 6-1 • Sophomore • 1L • Simpsonville, S.C. (Mauldin HS)

## SEASON HIGHS

Kills	28 vs. FIU (09/06/24) vs. Maryland (08/30/24)
Attacks	66 vs. FIU (09/06/24)
Hit % (Min. 10 att)	.512 vs. Davidson (09/07/24)
Assists	3 vs. Davidson (09/07/24) at Duke (09/05/24)
Aces	4 vs. New Hampshire (08/30/24)
Digs	13 vs. New Hampshire (08/30/24)
Total Blocks	3, Four Times
Block Solos	1 vs. New Hampshire (08/30/24)
Block Assists	3, Three Times

## CAREER HIGHS

Kills	28 vs. FIU (09/06/24) vs. Maryland (08/30/24)
Attacks	66 vs. FIU (09/06/24)
Hit % (Min. 10 att)	.552 vs. Texas Tech (09/16/23)
Assists	3 vs. Davidson (09/07/24) at Duke (09/05/24)
Aces	4 vs. New Hampshire (08/30/24)
Digs	17 vs. Texas A&M (10/13/23)
Total Blocks	6 at South Carolina (11/12/23)
Block Solos	2, Four Times
Block Assists	4, Three Times

## Complete bio

### Sophomore Season (2024)

- Leads the nation with 138 kills and 155 points, and No. 2 in the country with 5.96 points and 5.31 kills per set.
- Has five double-doubles and five 20-kill performances in the first six matches of the season.
- Has recorded a career-high 28 kills twice this season.
- Named to the 2024 Preseason All-SEC Team.
- Tabbed AVCA South Region Freshman of the Year and graced the SEC All-Freshman team.
- Ranked No. 5 among D1 freshmen in 2023 with 3.87 kills and No. 6 with 4.46 points per set.

### 2024 SEASON MATCH-BY-MATCH

		Attack				Set		Serve				Recept			Blocking				Team							
Date	Opponent	SP	K	E	TA	PCT	A	TA	PCT	SA	SE	TA	PCT	RE	TA	PCT	DIG	BS	BA	BE	TOTAL	BHE	POINTS	HIT%	SCORE	
08/30/2024	New Hampshire	*5	25	10	53	.283	1	6	.167	4	5	21	.762	0	24	1.000	13	1	2	0	3.0	0	31.0	.235	3-2	
08/30/2024	Maryland	*4	28	8	46	.435	2	4	.500	2	3	14	.786	0	17	1.000	12	0	3	0	3.0	0	31.5	.194	3-1	
08/31/2024	Troy	*5	20	9	52	.212	2	6	.333	1	5	21	.762	0	23	1.000	11	0	3	0	3.0	0	22.5	.269	2-3	
09/05/2024	at Duke	*4	13	10	36	.083	3	5	.600	0	3	11	.727	0	43	1.000	11	0	1	0	1.0	0	13.5	.178	3-1	
09/06/2024	vs FIU	*5	28	6	66	.333	0	6	.000	2	3	11	.727	0	21	1.000	8	0	2	0	2.0	0	31.0	.331	3-2	
09/07/2024	vs Davidson	*3	24	3	41	.512	3	3	1.000	0	0	9	1.000	0	12	1.000	10	0	3	0	3.0	0	25.5	.407	3-0	
Totals			26	138	46	.294	.313	11	30	.367	9	19	87	.782	0	140	1.000	65	1	14	0	15.0	0	155.0		

#### Player Averages

Sets Played	Kills per set	Assists per set	Service aces per set	Digs per set	Blocks per set	Points per set
26	5.31	0.42	0.35	2.50	0.58	5.96

### ROBINSON'S CAREER STATS

SEASON	TEAM	SM-MP	K	K/S	E	TA	PCT	A	A/S	SA	SA/S	SE	DIG	D/S	RE	BS	BA	TB	B/S	BE	BHE	PTS	PTS/S
2023-24	LS	101-28	391	3.87	170	952	.232	8	0.08	20	0.20	52	181	1.79	20	15	48	63	0.62	12	2	450.0	4.46
2024-25	LS	26-6	138	5.31	46	294	.313	11	0.42	9	0.35	19	65	2.50	0	1	14	15	0.58	0	0	155.0	5.96
TOTAL		127 - 34	529	4.17	216	1246	.251	19	0.15	29	0.23	71	246	1.94	20	16	62	78	0.61	12	2	605.0	4.76



# MADISON MARTIN

6

Defensive Specialist/Libero • 5-8 • Senior • 3L • Ormond Beach, Fla. (Mt. Carmel Academy)

### SEASON HIGHS

Kills	NA
Attacks	NA
Hit % (Min. 10 att)	NA
Assists	NA
Aces	NA
Digs	NA
Total Blocks	NA
Block Solos	NA
Block Assists	NA

### CAREER HIGHS

Kills	NA
Attacks	NA
Assists	1 at Ole Miss (11/12/21)
Hit % (Min. 10 att)	NA
Aces	3 vs. Sam Houston (09/11/21)
Digs	3 at Texas A&M (11/16/22)
Total Blocks	NA
Block Solos	NA
Block Assists	NA

### Complete bio

#### Senior Season (2024)

- Sat and passed MCAT this summer.
- Logged three aces in a single match against Sam Houston State in 2021.
- Is a two-time Fall SEC Academic Honor Roll selection.
- Was named to the 2023 SEC Community Service Team.

### 2023 SEASON MATCH-BY-MATCH

Date	Opponent	SP	Attack				Set			Serve				Recept			Blocking					Team			
			K	E	TA	PCT	A	TA	PCT	SA	SE	TA	PCT	RE	TA	PCT	DIG	BS	BA	BE	TOTAL	BHE	POINTS	HIT%	SCORE
08/25/2023	UCLA	1	0	0	0	.000	0	0	.000	0	0	0	.000	0	0	.000	0	0	0	0	0.0	0	0.0	.314	3-2
Totals		1	0	0	0	.000	0	0	.000	0	0	0	.000	0	0	.000	0	0	0	0	0.0	0	0.0		

#### Player Averages

Sets Played	Kills per set	Assists per set	Service aces per set	Digs per set	Blocks per set	Points per set
1	0.00	0.00	0.00	0.00	0.00	0.00

### MARTIN'S CAREER STATS

SEASON	TEAM	SM-MP	K	K/S	E	TA	PCT	A	A/S	SA	SA/S	SE	DIG	D/S	RE	BS	BA	TB	B/S	BE	BHE	PTS	PTS/S
2021-22	LSU	31-12	0	0.00	0	0	.000	1	0.03	3	0.10	2	7	0.23	0	0	0	0	0.00	0	0	3.0	0.10
2022-23	LSU	15-5	0	0.00	0	0	.000	0	0.00	1	0.07	1	6	0.40	0	0	0	0	0.00	0	0	1.0	0.07
2023-24	LSU	1-1	0	0.00	0	0	.000	0	0.00	0	0.00	0	0	0.00	0	0	0	0	0.00	0	0	0.0	0.00
TOTAL		47 - 18	0	0.00	0	0	.000	1	0.02	4	0.09	3	13	0.28	0	0	0	0	0.00	0	0	4.0	0.09



# JESSICA JONES

7

Middle Blocker • 6-2 • Freshman • HS • Frisco, Texas (Wakeland HS)

## SEASON HIGHS

Kills	12 vs. Troy (08/31/24)
Attacks	22 vs. Troy (08/31/24)
Hit % (Min. 10 att)	.500 vs. Troy (08/31/24)
Assists	1 vs. Maryland (08/30/24)
Aces	NA
Digs	2 vs. FIU (09/06/24)
Total Blocks	12 vs. Troy (08/31/24)
Block Solos	2 vs. Troy (08/31/24)
Block Assists	10 vs. Troy (08/31/24)

## CAREER HIGHS

Kills	12 vs. Troy (08/31/24)
Attacks	22 vs. Troy (08/31/24)
Hit % (Min. 10 att)	.500 vs. Troy (08/31/24)
Assists	1 vs. Maryland (08/30/24)
Aces	NA
Digs	2 vs. FIU (09/06/24)
Total Blocks	12 vs. Troy (08/31/24)
Block Solos	2 vs. Troy (08/31/24)
Block Assists	10 vs. Troy (08/31/24)

## Complete bio

### Freshman Season (2024)

- Ranks No. 9 in the SEC with a .352 hitting percentage and is second on the team with 0.96 blocks pe set.
- Logged a double-double vs. Troy (Aug. 31) with 12 kills along with 12 blocks.
- Became first LSU Tiger with 10 or more blocks in a match since 2021.
- Named 2023 AVCA Girls High School All-American.
- Brother, Ryan, plays football at North Dakota St.

## 2024 SEASON MATCH-BY-MATCH

Date	Opponent	SP	Attack				Set			Serve			Recept			Blocking				Team					
			K	E	TA	PCT	A	TA	PCT	SA	SE	TA	PCT	RE	TA	PCT	DIG	BS	BA	BE	TOTAL	BHE	POINTS	HIT%	SCORE
08/30/2024	New Hampshire	*5	7	2	12	.417	0	1	.000	0	0	3	1.000	0	0	.000	0	1	1	1	2.0	0	8.5	.235	3-2
08/30/2024	Maryland	*4	6	2	16	.250	1	1	1.000	0	1	3	.667	0	1	1.000	0	0	2	0	2.0	0	7.0	.194	3-1
08/31/2024	Troy	*5	12	1	22	.500	0	0	.000	0	0	0	.000	0	0	.000	1	2	10	1	12.0	0	19.0	.269	2-3
09/05/2024	at Duke	*4	7	0	15	.467	0	1	.000	0	1	1	.000	0	0	.000	0	0	1	0	1.0	0	7.5	.178	3-1
09/06/2024	vs FIU	*5	8	4	19	.211	0	2	.000	0	0	0	.000	0	0	.000	2	0	4	2	4.0	0	10.0	.331	3-2
09/07/2024	vs Davidson	*3	3	2	7	.143	0	0	.000	0	0	0	.000	0	0	.000	0	0	4	0	4.0	0	5.0	.407	3-0
Totals			26	43	11	.352	1	5	.200	0	2	7	.714	0	1	1.000	3	3	22	4	25.0	0	57.0		

### Player Averages

Sets Played	Kills per set	Assists per set	Service aces per set	Digs per set	Blocks per set	Points per set
26	1.65	0.04	0.00	0.12	0.96	2.19

## JONES' CAREER STATS

SEASON	TEAM	SM-MP	K	K/S	E	TA	PCT	A	A/S	SA	SA/S	SE	DIG	D/S	RE	BS	BA	TB	B/S	BE	BHE	PTS	PTS/S
2024-25	LS	26-6	43	1.65	11	91	.352	1	0.04	0	0.00	2	3	0.12	0	3	22	25	0.96	4	0	57.0	2.19
TOTAL		26 - 6	43	1.65	11	91	.352	1	0.04	0	0.00	2	3	0.12	0	3	22	25	0.96	4	0	57.0	2.19



# ELLA HEMMINGS

8

Defensive Specialist/Libero • 5-6 • Sophomore • 1L • Brownsburg, Ind. (Brownsburg HS)

### SEASON HIGHS

Kills	1 vs. New Hampshire (08/30/24)
Attacks	1 vs. New Hampshire (08/30/24)
Hit % (Min. 10 att)	NA
Assists	3 vs. FIU (09/06/24)
Aces	1 at Duke (09/05/24)
Digs	7 at Duke (09/05/24) vs. Maryland (08/30/24)
Total Blocks	NA
Block Solos	NA
Block Assists	NA

### CAREER HIGHS

Kills	1 vs. New Hampshire (08/30/24)
Attacks	1 vs. New Hampshire (08/30/24)
Hit % (Min. 10 att)	NA
Assists	3 vs. FIU (09/06/24)
Aces	2 at No. 22 Kentucky (09/22/23) vs. UCLA (08/26/23)
Digs	7 at Duke (09/05/24) vs. Maryland (08/30/24)
Total Blocks	NA
Block Solos	NA
Block Assists	NA

### [Complete bio](#)

#### Sophomore Season (2024)

- Set a new career-high with seven digs vs. Maryland (Aug. 30).
- Played in 68 setss over 22 matches in 2023 and totaled 13 aces.
- A four-year letterwinner for Brownsburg High School.
- Named Best Libero by Prep Volleyball.

### 2024 SEASON MATCH-BY-MATCH

Date	Opponent	SP	Attack			Set			Serve			Recept			Blocking				Team					
			K	E	TA	PCT	A	TA	PCT	SA	SE	TA	PCT	RE	TA	PCT	DIG	BS	BA	BE	TOTAL	BHE	POINTS	HIT% SCORE
08/30/2024	New Hampshire	5	1	0	1	1.000	0	6	.000	0	2	7	.714	0	25	1.000	6	0	0	0	0.0	0	1.0	.235 3-2
08/30/2024	Maryland	4	0	0	0	.000	2	4	.500	0	3	20	.850	1	22	.955	7	0	0	0	0.0	0	0.0	.194 3-1
08/31/2024	Troy	5	0	0	0	.000	2	4	.500	0	3	12	.750	0	34	1.000	4	0	0	0	0.0	0	0.0	.269 2-3
09/05/2024	at Duke	4	0	0	0	.000	1	6	.167	1	3	10	.700	0	15	1.000	7	0	0	0	0.0	0	1.0	.178 3-1
09/06/2024	vs FIU	3	0	0	0	.000	3	5	.600	0	0	0	.000	1	18	.944	2	0	0	0	0.0	0	0.0	.331 3-2
09/07/2024	vs Davidson	3	0	0	0	.000	0	0	.000	0	0	1	1.000	0	3	1.000	0	0	0	0	0.0	0	0.0	.407 3-0
Totals		24	1	0	1	1.000	8	25	.320	1	11	50	.780	2	117	.983	26	0	0	0	0.0	0	2.0	

#### Player Averages

Sets Played	Kills per set	Assists per set	Service aces per set	Digs per set	Blocks per set	Points per set
24	0.04	0.33	0.04	1.08	0.00	0.08

### HEMMINGS' CAREER STATS

SEASON	TEAM	SM-MP	K	K/S	E	TA	PCT	A	A/S	SA	SA/S	SE	DIG	D/S	RE	BS	BA	TB	B/S	BE	BHE	PTS	PTS/S
2023-24	LS	68-22	0	0.00	0	0	.000	10	0.15	13	0.19	12	25	0.37	0	0	0	0	0.00	0	0	13.0	0.19
2024-25	LS	24-6	1	0.04	0	1	1.000	8	0.33	1	0.04	11	26	1.08	2	0	0	0	0.00	0	0	2.0	0.08
TOTAL		92 - 28	1	0.01	0	1	1.000	18	0.20	14	0.15	23	51	0.55	2	0	0	0	0.00	0	0	15.0	0.16



# SHEA BRUNTMYER

9

Setter • 5-9 • Freshman • HS • Abilene, Texas (IMG Academy)

## SEASON HIGHS

Kills	NA
Attacks	NA
Hit % (Min. 10 att)	NA
Assists	NA
Aces	NA
Digs	NA
Total Blocks	NA
Block Solos	NA
Block Assists	NA

## CAREER HIGHS

Kills	NA
Attacks	NA
Hit % (Min. 10 att)	NA
Assists	NA
Aces	NA
Digs	NA
Total Blocks	NA
Block Solos	NA
Block Assists	NA

## [Complete bio](#)

### Freshman Season (2024)

- Moved from Abilene, Texas, to be part of IMG Academy's Inaugural volleyball season.
- Was honored as the Setter of the Year, District MVP, and First Team All-State at Abilene High School.
- Totaled 2,132 assists, 250 aces, 633 digs and 464 kills during her high school career.

## 2024 SEASON MATCH-BY-MATCH

## BRUNTMYER'S CAREER STATS



# LAINEE PYLES

11

Outside Hitter • 6-2 • Freshman • HS • Keller, Texas (Fossil Ridge HS)

### SEASON HIGHS

Kills	5 vs. Maryland (08/30/24)
Attacks	25 vs. Maryland (08/30/24)
Hit % (Min. 10 att)	-.080 vs. Maryland (08/30/24)
Assists	1 vs. New Hampshire (08/30/24)
Aces	2 vs. Maryland (08/30/24)
Digs	3 vs. Maryland (08/30/24)
Total Blocks	2 vs. Troy (08/31/24)
Block Solos	NA
Block Assists	2 vs. Troy (08/31/24)

### CAREER HIGHS

Kills	5 vs. Maryland (08/30/24)
Attacks	25 vs. Maryland (08/30/24)
Hit % (Min. 10 att)	-.080 vs. Maryland (08/30/24)
Assists	1 vs. New Hampshire (08/30/24)
Aces	2 vs. Maryland (08/30/24)
Digs	3 vs. Maryland (08/30/24)
Total Blocks	2 vs. Troy (08/31/24)
Block Solos	NA
Block Assists	2 vs. Troy (08/31/24)

### Complete bio

#### Freshman Season (2024)

- Logged season-highs of five kills, three digs and two aces vs. Maryland (Aug. 30).
- Was District MVP when playing for Fossil Ridge High School.
- Was teammates with Bri Watson with Madfrog Volleyball Club and won the 2022 National Championship.
- Named Tournament MVP in the USA Volleyball All-Star Tournament.

#### 2024 SEASON MATCH-BY-MATCH

		Attack					Set			Serve			Recept			Blocking					Team				
Date	Opponent	SP	K	E	TA	PCT	A	TA	PCT	SA	SE	TA	PCT	RE	TA	PCT	DIG	BS	BA	BE	TOTAL	BHE	POINTS	HIT%	SCORE
08/30/2024	New Hampshire	1	0	2	8	-.250	1	2	.500	1	0	3	1.000	0	1	1.000	2	0	0	0	0.0	0	1.0	.235	3-2
08/30/2024	Maryland	4	5	7	25	-.080	0	0	.000	2	3	13	.769	0	3	1.000	3	0	1	0	1.0	0	7.5	.194	3-1
08/31/2024	Troy	4	2	2	7	.000	0	1	.000	0	2	5	.600	0	0	.000	2	0	2	0	2.0	0	3.0	.269	2-3
Totals		9	7	11	40	-.100	1	3	.333	3	5	21	.762	0	4	1.000	7	0	3	0	3.0	0	11.5		

#### Player Averages

Sets Played	Kills per set	Assists per set	Service aces per set	Digs per set	Blocks per set	Points per set
9	0.78	0.11	0.33	0.78	0.33	1.28

### PYLES' CAREER STATS

SEASON	TEAM	SM-MP	K	K/S	E	TA	PCT	A	A/S	SA	SA/S	SE	DIG	D/S	RE	BS	BA	TB	B/S	BE	BHE	PTS	PTS/S
2024-25	LS	9-3	7	0.78	11	40	-.100	1	0.11	3	0.33	5	7	0.78	0	0	3	3	0.33	0	0	11.5	1.28
TOTAL		9 - 3	7	0.78	11	40	-.100	1	0.11	3	0.33	5	7	0.78	0	0	3	3	0.33	0	0	11.5	1.28



# BRI WATSON

# 12

Outside Hitter • 6-1 • Freshman • HS • Flower Mound, Texas (Flower Mound HS)

## SEASON HIGHS

Kills	NA
Attacks	NA
Hit % (Min. 10 att)	NA
Assists	NA
Aces	NA
Digs	NA
Total Blocks	NA
Block Solos	NA
Block Assists	NA

## CAREER HIGHS

Kills	NA
Attacks	NA
Hit % (Min. 10 att)	NA
Assists	NA
Aces	NA
Digs	NA
Total Blocks	NA
Block Solos	NA
Block Assists	NA

## [Complete bio](#)

### Freshman Season (2024)

- Is a two-time All-State selection at Flower Mound High School.
- Won Gold medal at GJMC 16U Open.
- Named 17U All-American by Prep Volleyball.
- Sister Makayla runs track at Pitt State.
- Was teammates with Jessica Jones on Drive Nation and Lainee Pyles with Madfrog Volleyball Club.

## 2024 SEASON MATCH-BY-MATCH

## WATSON'S CAREER STATS



# AC FROEHLICH

# 13

Outside Hitter • 6-1 • Sophomore • 1L • Lafayette, La. (St. Thomas HS)

## SEASON HIGHS

Kills	15 vs. FIU (09/06/24)
Attacks	51 at Duke (09/05/24)
Hit % (Min. 10 att)	.371 vs. FIU (09/06/24)
Assists	2 vs. New Hampshire (08/30/24)
Aces	4 at Duke (09/05/24)
Digs	14 vs. FIU (09/06/24)
Total Blocks	2 vs. FIU (09/06/24)
Block Solos	NA
Block Assists	2 vs. FIU (09/06/24)

## CAREER HIGHS

Kills	15 vs. FIU (09/06/24)
Attacks	51 at Duke (09/05/24)
Hit % (Min. 10 att)	.371 vs. FIU (09/06/24)
Assists	2 vs. New Hampshire (08/30/24)
Aces	4 at Duke (09/05/24)
Digs	14 vs. FIU (09/06/24)
Total Blocks	2 vs. FIU (09/06/24)
Block Solos	NA
Block Assists	2 vs. FIU (09/06/24)

## Complete bio

### Sophomore Season (2024)

- Recorded first career double-double with career-highs of 15 kills and 14 digs vs. FIU (Sept. 6).
- Turned in a career-high four aces vs. Duke (Sept. 5).
- Logged an ace and four digs in her collegiate debut vs. Southeastern Louisiana (Sept. 10, 2023).
- Helped lead St. Thomas More High School to a 2022 Louisiana State Championship title.
- Named the 2022 Louisiana Gatorade Player of the Year and an AVCA High School All-American.

## 2024 SEASON MATCH-BY-MATCH

			Attack				Set			Serve				Recept			Blocking				Team				
Date	Opponent	SP	K	E	TA	PCT	A	TA	PCT	SA	SE	TA	PCT	RE	TA	PCT	DIG	BS	BA	BE	TOTAL	BHE	POINTS	HIT%	SCORE
08/30/2024	New Hampshire	*2	3	1	8	.250	2	4	.500	0	3	11	.727	0	8	1.000	9	0	1	1	1.0	0	3.5	.235	3-2
08/31/2024	Troy	2	4	2	16	.125	0	0	.000	0	1	4	.750	0	0	.000	1	0	0	0	0.0	0	4.0	.269	2-3
09/05/2024	at Duke	*4	14	8	51	.118	0	1	.000	4	3	25	.880	0	2	1.000	4	0	0	1	0.0	0	18.0	.178	3-1
09/06/2024	vs FIU	*5	15	2	35	.371	0	2	.000	3	1	25	.960	0	9	1.000	14	0	2	1	2.0	0	19.0	.331	3-2
09/07/2024	vs Davidson	*3	9	5	19	.211	0	3	.000	0	0	15	1.000	0	5	1.000	9	0	1	0	1.0	0	9.5	.407	3-0
Totals			16	45	18	.209	2	10	.200	7	8	80	.900	0	24	1.000	37	0	4	3	4.0	0	54.0		

### Player Averages

Sets Played	Kills per set	Assists per set	Service aces per set	Digs per set	Blocks per set	Points per set
16	2.81	0.13	0.44	2.31	0.25	3.38

## FROEHLICH'S CAREER STATS

SEASON	TEAM	SM-MP	K	K/S	E	TA	PCT	A	A/S	SA	SA/S	SE	DIG	D/S	RE	BS	BA	TB	B/S	BE	BHE	PTS	PTS/S
2023-24	LS	4-1	0	0.00	0	0	.000	0	0.00	1	0.25	1	4	1.00	0	0	0	0	0.00	0	0	1.0	0.25
2024-25	LS	16-5	45	2.81	18	129	.209	2	0.13	7	0.44	8	37	2.31	0	0	4	4	0.25	3	0	54.0	3.38
TOTAL		20 - 6	45	2.25	18	129	.209	2	0.10	8	0.40	9	41	2.05	0	0	4	4	0.20	3	0	55.0	2.75



# RUMUR ROUILLE

14

Middle Block • 6-4 • Senior • TR • Tuscon, Ariz. (Ironwood Ridge HS)

## SEASON HIGHS

Kills	NA
Attacks	NA
Hit % (Min. 10 att)	NA
Assists	NA
Aces	NA
Digs	NA
Total Blocks	NA
Block Solos	NA
Block Assists	NA

## CAREER HIGHS

Kills	10 vs. Central Conn. St. (09/22/23)*
Attacks	25 vs. Delaware St. (09/12/23)*
Hit % (Min. 10 att)	.571 vs. Merrimack (10/01/21)*
Assists	1, Eight Times*
Aces	N/A
Digs	5 at Merrimack (10/08/22)*
Total Blocks	12 vs. Merrimack (10/13/23)*
Block Solos	4 at Sacred Heart (11/17/23)* vs. Lehigh (08/25/23)*
Block Assists	10 vs. Sacred Heart (09/23/23)*

\* Played at Long Island.

## Complete bio

### Senior Season (2024)

- A two-time All-Northeast Conference (NEC) selection at Long Island.
- Led the NEC in blocks for two consecutive seasons, including 134 blocks and 1.24 per set in 2023.
- Enters 2024 with 294 career blocks (1.16/set), including 45 solos, and has 288 kills and .249 hitting percentage.
- Named the 2023-2024 NEC Scholar-Athlete of the Year.

### 2023 SEASON MATCH-BY-MATCH (AT LONG ISLAND)

Date	Opponent	SP	Attack				Set			Serve			Recept			DIG	BS	Blocking			Team				
			K	E	TA	PCT	A	TA	PCT	SA	SE	TA	PCT	RE	TA			PCT	BA	BE	TOTAL	BHE	POINTS	HIT% SCORE	
08/25/2023	vs Lehigh	*5	7	3	20	.200	0	0	.000	0	0	0	.000	0	0	.000	3	4	0	1	4.0	0	11.0	.130 2-3	
08/26/2023	at Temple	*3	3	3	11	.000	0	0	.000	0	0	0	.000	0	0	.000	2	2	4	0	6.0	0	7.0	.070 0-3	
09/01/2023	at Grand Canyon	*3	6	2	12	.333	0	1	.000	0	0	0	.000	0	0	.000	0	3	0	0	3.0	0	9.0	-.046 0-3	
09/02/2023	vs Iowa St.	*3	0	2	8	-.250	0	2	.000	0	0	0	.000	0	0	.000	1	0	0	0	0.0	0	0.0	.062 0-3	
09/02/2023	vs Arizona	*3	2	0	8	.250	0	0	.000	0	0	0	.000	0	0	.000	0	1	1	0	2.0	0	3.5	.120 0-3	
09/05/2023	Fairfield	*3	3	3	14	.000	0	3	.000	0	0	0	.000	0	2	1.000	1	0	5	0	5.0	1	5.5	.188 3-0	
09/07/2023	vs Boston College	*3	2	1	5	.200	0	2	.000	0	0	0	.000	0	0	.000	1	0	4	1	4.0	0	4.0	-.028 0-3	
09/08/2023	vs Fordham	*4	3	1	14	.143	0	5	.000	0	0	0	.000	0	0	.000	0	0	2	1	2.0	0	4.0	.124 1-3	
09/09/2023	at Iona	*4	5	1	12	.333	0	1	.000	0	0	0	.000	0	1	1.000	2	3	4	0	7.0	0	10.0	.165 1-3	
09/12/2023	Delaware St.	*5	9	2	25	.280	0	0	.000	0	0	0	.000	1	2	.500	0	0	6	0	6.0	0	12.0	.198 2-3	
09/14/2023	at Kansas St.	*3	2	2	13	.000	0	1	.000	0	0	0	.000	0	0	.000	0	0	2	0	2.0	0	3.0	-.047 0-3	
09/15/2023	vs Rice	*5	3	2	14	.071	0	2	.000	0	0	0	.000	0	1	1.000	0	2	3	0	5.0	0	6.5	.174 2-3	
09/22/2023	Central Conn. St.	*5	10	3	20	.350	0	1	.000	0	0	0	.000	0	0	.000	0	2	3	1	5.0	0	13.5	.225 3-2	
09/23/2023	Sacred Heart	*5	7	2	20	.250	0	1	.000	0	0	0	.000	0	0	.000	0	0	10	0	10.0	0	12.0	.195 2-3	
09/29/2023	at Le Moyne	*2	2	0	5	.400	0	1	.000	0	0	0	.000	0	0	.000	0	0	1	0	1.0	0	2.5	.267 3-0	
09/30/2023	at Saint Francis (PA)	*3	3	2	9	.111	0	0	.000	0	0	0	.000	0	0	.000	0	0	1	0	1.0	0	3.5	.253 3-0	
10/07/2023	at FDU	*4	7	1	17	.353	0	0	.000	0	0	0	.000	0	2	1.000	2	1	5	0	6.0	0	10.5	.149 1-3	
10/10/2023	Binghamton	*4	6	4	14	.143	0	0	.000	0	0	1	1.000	1	2	.500	2	0	3	0	3.0	0	7.5	.175 1-3	
10/13/2023	Merrimack	*4	9	2	18	.389	0	0	.000	0	0	0	.000	0	0	.000	0	3	9	2	12.0	0	16.5	.212 3-1	
10/14/2023	Stonehill	*3	4	1	9	.333	0	0	.000	0	0	0	.000	0	0	.000	0	0	5	0	5.0	0	6.5	.247 3-0	
10/20/2023	at Central Conn. St.	*4	7	2	15	.333	1	3	.333	0	0	0	.000	0	1	1.000	4	1	5	2	6.0	0	10.5	.158 3-1	
10/21/2023	at Sacred Heart	*3	4	0	6	.667	0	0	.000	0	0	3	1.000	0	0	.000	1	1	3	0	4.0	0	6.5	.119 0-3	
10/28/2023	FDU	*4	8	1	16	.438	1	6	.167	0	0	0	.000	0	0	.000	0	0	7	1	7.0	1	11.5	.271 1-3	
10/31/2023	at UAlbany	*4	3	2	13	.077	0	1	.000	0	0	1	1.000	0	0	.000	0	0	2	1	2.0	0	4.0	.120 3-1	
11/03/2023	at Merrimack	*3	3	0	7	.429	0	1	.000	0	0	0	.000	0	0	.000	1	0	2	1	2.0	0	4.0	.271 3-0	
11/04/2023	at Stonehill	*3	6	2	12	.333	0	0	.000	0	0	0	.000	0	0	.000	0	1	3	0	4.0	0	8.5	.402 3-0	
11/10/2023	Le Moyne	*2	2	1	5	.200	0	0	.000	0	0	0	.000	0	0	.000	1	0	2	0	2.0	0	3.0	.435 3-0	
11/11/2023	Saint Francis (PA)	*4	7	3	16	.250	0	1	.000	0	0	0	.000	0	0	.000	0	0	3	0	3.0	0	8.5	.180 1-3	
11/17/2023	at Sacred Heart	*4	4	0	14	.286	0	0	.000	0	0	0	.000	0	0	.000	0	4	4	0	8.0	0	10.0	.184 3-1	
11/18/2023	vs FDU	*4	4	0	11	.364	0	1	.000	0	0	0	.000	0	0	.000	1	0	5	0	5.0	0	6.5	.279 3-1	
12/01/2023	at Nebraska	*3	2	1	8	.125	0	0	.000	0	0	0	.000	0	2	1.000	0	2	5	0	7.0	0	6.5	.151 0-3	
Totals			112	143	49	391	.240	2	33	.061	0	0	5	1.000	2	13	.846	24	30	109	11	139.0	2	227.5	

#### Player Averages

Sets Played	Kills per set	Assists per set	Service aces per set	Digs per set	Blocks per set	Points per set
112	1.28	0.02	0.00	0.21	1.24	2.03

## ROUILLE'S CAREER STATS

SEASON	TEAM	SM-MP	K	K/S	E	TA	PCT	A	A/S	SA	SA/S	SE	DIG	D/S	RE	BS	BA	TB	B/S	BE	BHE	PTS	PTS/S
2021-22	LIU	70-24	61	0.87	27	180	.189	3	0.04	0	0.00	0	8	0.11	0	5	55	60	0.86	3	0	93.5	1.34
2022-23	LIU	70-26	84	1.20	19	203	.320	3	0.04	0	0.00	1	19	0.27	0	10	85	95	1.36	7	0	136.5	1.95
2023-24	LIU	112-31	143	1.28	49	391	.240	2	0.02	0	0.00	0	24	0.21	2	30	109	139	1.24	11	2	227.5	2.03
TOTAL		252 - 81	288	1.14	95	774	.249	8	0.03	0	0.00	1	51	0.20	2	45	249	294	1.17	21	2	457.5	1.82



# MIKA ROME

# 16

Setter • 5-10 • Redshirt Freshman • HS • Ra'anana, Israel (Mekif HaSharon School)

## SEASON HIGHS

Kills	NA
Attacks	NA
Hit % (Min. 10 att)	NA
Assists	NA
Aces	NA
Digs	NA
Total Blocks	NA
Block Solos	NA
Block Assists	NA

## CAREER HIGHS

Kills	NA
Attacks	NA
Hit % (Min. 10 att)	NA
Assists	NA
Aces	NA
Digs	NA
Total Blocks	NA
Block Solos	NA
Block Assists	NA

## [Complete bio](#)

### Redshirt Freshman Season (2024)

- Redshirt last season due to an ACL injury, and re-injured ACL during the spring season.
- Played for the Israeli National Team and was captain for a number of youth Israeli teams.
- U21 Israeli Team qualified for the European Championship and finished 7th.

## 2024 SEASON MATCH-BY-MATCH

## ROME'S CAREER STATS



# REMI NUSS

18

Defensive Specialist/Libero • 5-6 • Freshman • HS • Overland Park, Kan. (Blue Valley Northwest HS)

### SEASON HIGHS

Kills	NA
Attacks	NA
Hit % (Min. 10 att)	NA
Assists	1 vs. FIU (09/06/24)
Aces	1 at Duke (09/05/24)
	vs. New Hampshire (08/30/24)
Digs	3 vs. FIU (09/06/24)
Total Blocks	NA
Block Solos	NA
Block Assists	NA

### CAREER HIGHS

Kills	NA
Attacks	NA
Hit % (Min. 10 att)	NA
Assists	1 vs. FIU (09/06/24)
Aces	1 at Duke (09/05/24)
	vs. New Hampshire (08/30/24)
Digs	3 vs. FIU (09/06/24)
Total Blocks	NA
Block Solos	NA
Block Assists	NA

### [Complete bio](#)

#### Freshman Season (2024)

- Was an All-Eastern Kansas League selection at Blue Valley Northwest High School.
- Qualified for USAV GJNC's every year with Mavs KC volleyball club.
- Won the 2021 USAV GJNC 15 National Division Championship.

### 2024 SEASON MATCH-BY-MATCH

Date	Opponent	SP	Attack			Set		Serve			Recept			Blocking				Team			
			K	E	TA	PCT	A	TA	PCT	SA	SE	TA	PCT	RE	TA	PCT	DIG	BS	BA	BE	TOTAL
08/30/2024	New Hampshire	4	0	0	0	.000	0	1	.000	1	1	16	.938	0	0	.000	2	0	0	0	0.0
08/30/2024	Maryland	4	0	0	0	.000	0	0	.000	0	1	9	.889	0	0	.000	2	0	0	0	0.0
08/31/2024	Troy	5	0	0	0	.000	0	0	.000	0	1	14	.929	0	0	.000	1	0	0	0	0.0
09/05/2024	at Duke	4	0	0	0	.000	0	2	.000	1	1	13	.923	0	0	.000	0	0	0	0	0.0
09/06/2024	vs FIU	4	0	0	0	.000	1	2	.500	0	1	13	.923	0	0	.000	3	0	0	0	0.0
09/07/2024	vs Davidson	2	0	0	0	.000	0	0	.000	0	1	7	.857	0	0	.000	0	0	0	0	0.0
Totals		23	0	0	0	.000	1	5	.200	2	6	72	.917	0	0	.000	8	0	0	0	0.0

#### Player Averages

Sets Played	Kills per set	Assists per set	Service aces per set	Digs per set	Blocks per set	Points per set
23	0.00	0.04	0.09	0.35	0.00	0.09

### NUSS' CAREER STATS

SEASON	TEAM	SM-MP	K	K/S	E	TA	PCT	A	A/S	SA	SA/S	SE	DIG	D/S	RE	BS	BA	TB	B/S	BE	BHE	PTS	PTS/S
2024-25	LS	23-6	0	0.00	0	0	.000	1	0.04	2	0.09	6	8	0.35	0	0	0	0	0.00	0	0	2.0	0.09
TOTAL		23 - 6	0	0.00	0	0	.000	1	0.04	2	0.09	6	8	0.35	0	0	0	0	0.00	0	0	2.0	0.09



# JADE DEMPS

23

Right Side • 6-2 • Fifth-Year Senior • 1L • Raleigh, N.C. (Wisconsin)

## SEASON HIGHS

Kills	13 vs. Troy (08/31/24)
Attacks	35 vs. Troy (08/31/24)
Hit % (Min. 10 att)	.545 vs. Davidson (09/07/24)
Assists	1 vs. FIU (09/06/24) vs. Troy (08/31/24)
Aces	3 vs. Maryland (08/30/24)
Digs	17 at Duke (09/05/24)
Total Blocks	7 vs. Troy (08/31/24)
Block Solos	NA
Block Assists	7 vs. Troy (08/31/24)

## CAREER HIGHS

Kills	18 at Minnesota (11/21/21)*
Attacks	49 at Minnesota (11/21/21)*
Hit % (Min. 10 att)	.545 vs. Davidson (09/07/24) vs. Penn St. (10/23/22)*
Assists	4 vs. No. 13 Arkansas (10/4/23)
Aces	3, Three Times
Digs	17 at Duke (09/05/24) vs. UCLA (08/26/23)
Total Blocks	7 vs. Troy (08/31/24)
Block Solos	1, Three Times (2x*)
Block Assists	7 vs. Troy (08/31/24)

\* Played at Wisconsin.

## Complete bio

### Senior Season (2024)

- Had a season-high 13 kills and career-high seven blocks vs. Troy (Aug. 31).
- Matched career-highs of a .545 hitting percentage and 17 digs during tournament at Duke (Sept. 5-7).
- Totaled 182 kills, 137 digs, 37 blocks, 23 assists and nine aces in her first season at LSU.
- Has five career double-doubles (two at Wisconsin).
- Made two Final Four appearances and won the 2021 National Championship with Wisconsin.
- Attended the same high school as Pete Maravich - Broughton HS in North Carolina.

### 2024 SEASON MATCH-BY-MATCH

		Attack				Set			Serve				Recept			Blocking				Team						
Date	Opponent	SP	K	E	TA	PCT	A	TA	PCT	SA	SE	TA	PCT	RE	TA	PCT	DIG	BS	BA	BE	TOTAL	BHE	POINTS	HIT%	SCORE	
08/30/2024	New Hampshire	3	3	3	16	.000	0	4	.000	1	0	11	1.000	0	7	1.000	10	0	2	0	2.0	0	5.0	.235	3-2	
08/30/2024	Maryland	*4	5	4	24	.042	0	4	.000	3	1	15	.933	0	13	1.000	10	0	2	0	2.0	0	9.0	.194	3-1	
08/31/2024	Troy	*5	13	4	35	.257	1	2	.500	1	3	23	.870	0	16	1.000	9	0	7	0	7.0	0	17.5	.269	2-3	
09/05/2024	at Duke	*4	9	3	30	.200	0	2	.000	0	1	12	.917	0	7	1.000	17	0	4	0	4.0	0	11.0	.178	3-1	
09/06/2024	vs FIU	*5	6	2	14	.286	1	2	.500	2	2	23	.913	0	12	1.000	13	0	2	0	2.0	0	9.0	.331	3-2	
09/07/2024	vs Davidson	*3	6	0	11	.545	0	1	.000	0	0	16	1.000	0	14	1.000	2	0	0	0	0.0	0	6.0	.407	3-0	
Totals			24	42	16	.130	.200	2	15	.133	7	7	100	.930	0	69	1.000	61	0	17	0	17.0	0	57.5		

#### Player Averages

Sets Played	Kills per set	Assists per set	Service aces per set	Digs per set	Blocks per set	Points per set
24	1.75	0.08	0.29	2.54	0.71	2.40

### DEMPS' CAREER STATS

SEASON	TEAM	SM-MP	K	K/S	E	TA	PCT	A	A/S	SA	SA/S	SE	DIG	D/S	RE	BS	BA	TB	B/S	BE	BHE	PTS	PTS/S
2020-21	Wisc	23-12	48	2.09	11	108	.343	0	0.00	0	0.00	0	4	0.17	1	1	2	3	0.13	2	0	50.0	2.17
2021-22	Wisc	98-31	189	1.93	60	481	.268	9	0.09	7	0.07	23	109	1.11	1	1	20	21	0.21	8	0	207.0	2.11
2022-23	Wisc	69-27	80	1.16	19	216	.282	1	0.01	2	0.03	3	39	0.57	1	0	22	22	0.32	1	1	93.0	1.35
2023-24	LS	99-28	182	1.84	77	532	.197	23	0.23	9	0.09	16	137	1.38	9	1	36	37	0.37	5	1	210.0	2.12
2024-25	LS	24-6	42	1.75	16	130	.200	2	0.08	7	0.29	7	61	2.54	0	0	17	17	0.71	0	0	57.5	2.40
TOTAL FOR LS		123 - 34	224	1.82	93	662	.198	25	0.20	16	0.13	23	198	1.61	9	1	53	54	0.44	5	1	267.5	2.17
TOTAL		313 - 104	541	1.73	183	1467	.244	35	0.11	25	0.08	49	350	1.12	12	3	97	100	0.32	16	2	617.5	1.97



SOPHIE  
BONNAFEE

24

Defensive Specialist/Libero • 5-7 • Freshman • HS • Covington, La. (Archbishop Hannan HS)

SEASON HIGHS	
Kills	NA
Attacks	NA
Hit % (Min. 10 att)	NA
Assists	NA
Aces	NA
Digs	NA
Total Blocks	NA
Block Solos	NA
Block Assists	NA
CAREER HIGHS	
Kills	NA
Attacks	NA
Hit % (Min. 10 att)	NA
Assists	NA
Aces	NA
Digs	NA
Total Blocks	NA
Block Solos	NA
Block Assists	NA

Complete bio

Freshman Season (2024)

- Made collegiate apperance vs. Davidson (Sept. 7).
- Won three Louisiana State Championships at Archbishop Hannan High School.
- Is a two-time State Championship MVP.

2024 SEASON MATCH-BY-MATCH

			Attack				Set		Serve				Recept			Blocking				Team			
Date	Opponent	SP	K	E	TA	PCT	A	TA	PCT	SA	SE	TA	PCT	RE	TA	PCT	DIG	BS	BA	BE	TOTAL	BHE	POINTS
09/07/2024	vs Davidson	1	0	0	0	.000	0	0	.000	0	1	3	.667	0	0	.000	0	0	0	0	0.0	0	0.0
Totals			1	0	0	.000	0	0	.000	0	1	3	.667	0	0	.000	0	0	0	0	0.0	0	0.0

Player Averages

Sets Played	Kills per set	Assists per set	Service aces per set	Digs per set	Blocks per set	Poi
1	0.00	0.00	0.00	0.00	0.00	

BONNAFEE'S CAREER STATS

SEASON	TEAM	SM-MP	K	K/S	E	TA	PCT	A	A/S	SA	SA/S	SE	DIG	D/S	RE	BS	BA	TB	B/S	BE	BHE	PTS	PTS/S
2024-25	LS	1-1	0	0.00	0	0	.000	0	0.00	0	0.00	1	0	0.00	0	0	0	0	0.00	0	0	0.0	0.00
TOTAL		1 - 1	0	0.00	0	0	.000	0	0.00	0	0.00	1	0	0.00	0	0	0	0	0.00	0	0	0.0	0.00

# NCAA RANKINGS

As of Sept. 8, 2024

Statistic	National Rank	Conference Rank	Value	National Leader	Value	Conference Leader	Value
Aces Per Set (334 ranked)	206	10	1.42	Pittsburgh	3.11	Kentucky	2.24
Assists Per Set (334 ranked)	40	6	12.85	Texas A&M	15.08	Texas A&M	15.08
Blocks Per Set (334 ranked)	144	10	2.12	Idaho St.	3.76	Auburn	3.08
Digs Per Set (334 ranked)	196	8	13.58	Western Ill.	20.71	Auburn	18.85
Hitting Percentage (334 ranked)	46	8	0.260	Pittsburgh	0.356	Texas A&M	0.331
Kills Per Set (334 ranked)	51	8	13.50	Texas A&M	16.15	Texas A&M	16.15
Match W-L Pctg. (316 ranked)	35	4	0.833	30 teams tied	1.000	Arkansas	1.000
						Auburn	1.000
						Texas A&M	1.000
Opp Hitting Percentage (334 ranked)	157	10	0.196	Pittsburgh	0.074	Ole Miss	0.120
Team Assists (333 ranked)	8	1	334	Missouri St.	362	LSU	334
Team Attacks Per Set (334 ranked)	197	7	33.31	Western Ill.	43.38	Auburn	39.45
Team Digs (334 ranked)	61	3	353	Missouri St.	541	Arkansas	411
Team Kills (334 ranked)	13	1	351	Missouri St.	394	LSU	351
Team Service Aces (334 ranked)	108	6	37	Miami (OH)	69	Kentucky	56
Team Total Attacks (334 ranked)	38	2	866	Presbyterian	1,099	Arkansas	872
Team Total Blocks (333 ranked)	59	4	55.0	Idaho St.	94.0	Auburn	61.5

Statistic	Player	National Rank	Conference Rank	Value	National Leader	Value	Conference Leader	Value
Aces Per Set (144 ranked)					Constanza Perez Sain, Hofstra	1.14	Brooklyn DeLeye, Kentucky	0.58
Assists Per Set (150 ranked)	Bailey Ortega	9	3	11.12	Maddie Waak, Texas A&M	12.31	Maddie Waak, Texas A&M	12.31
Attacks Per Set (150 ranked)	Jurnee Robinson	42	3	11.31	Keyana Cruse, Western Ill.	14.14	Alexis Shelton, Oklahoma	12.00
							Madisen Skinner, Texas	12.00
Blocks Per Set (299 ranked)	Angelina Lee	217	17	1.04	Julia Haggerty, Boston College	2.44	Lydia Martyn, Oklahoma	1.40
	Jessica Jones	270	19	0.96				
Digs Per Set (150 ranked)					Laney Klika, Wofford	6.06	Maya Sands, Missouri	5.10
Hitting Percentage (150 ranked)	Jessica Jones	126	8	0.352	Claire Jeter, Arizona St.	0.625	Ifenna Cos-Okpalla, Texas A&M	0.444
Kills Per Set (1477 ranked)	Jurnee Robinson	2	2	5.31	Alexis Shelton, Oklahoma	5.53	Alexis Shelton, Oklahoma	5.53
	Angelina Lee	938	48	1.92				
	Jade Demps	1066	54	1.75				
	Jessica Jones	1142	59	1.65				
Kills SG Highs (0 ranked)								
Points (146 ranked)	Jurnee Robinson	1	1	155.0	Jurnee Robinson, LSU	155.0	Jurnee Robinson, LSU	155.0
Points Per Set (150 ranked)	Jurnee Robinson	2	2	5.96	Alexis Shelton, Oklahoma	6.33	Alexis Shelton, Oklahoma	6.33
Service Aces (123 ranked)					Brooke Phillips, Mercer	21	Brooklyn DeLeye, Kentucky	14
Total Assists (150 ranked)	Bailey Ortega	2	1	289	Elaine Redman, Chattanooga	298	Bailey Ortega, LSU	289
Total Attacks (149 ranked)	Jurnee Robinson	10	1	294	Amaris Smith, CSUN	333	Jurnee Robinson, LSU	294
Total Blocks (197 ranked)	Angelina Lee	62	4	27	Marci Bell, Idaho St.	48	Sophie Fischer, Georgia	37
	Jessica Jones	92	7	25				
Total Digs (289 ranked)					Paige Gallentine, Chattanooga	139	Courtney Jackson, Arkansas	112
Total Kills (140 ranked)	Jurnee Robinson	1	1	138	Jurnee Robinson, LSU	138	Jurnee Robinson, LSU	138
Triple Doubles (5 ranked)					Jalyn Stout, Coastal Carolina	3		

# 2024 TV/Radio Roster



**No. 0 • Mackenzie Boyer**  
MB • 6-3 • R-Fr.



**No. 1 • Ana Tevdoradze**  
OH/RS • 6-3 • Jr.



**No. 2 • Bailey Ortega**  
S • 5-9 • Gr.



**No. 3 • Aly Kirkhoff**  
DS/L • 5-6 • Fr.



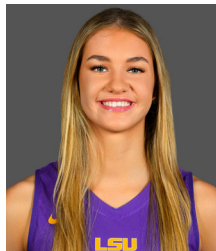
**No. 4 • Angelina Lee**  
MB • 6-2 • So.



**No. 5 • Jurnee Robinson**  
OH • 6-1 • So.



**No. 6 • Madison Martin**  
DS/L • 5-8 • Sr.



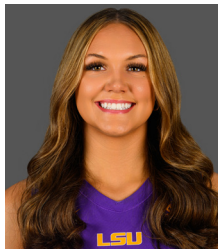
**No. 7 • Jessica Jones**  
MB • 6-2 • Fr.



**No. 8 • Ella Hemmings**  
DS/L • 5-6 • So.



**No. 9 • Shea Bruntmyer**  
S • 5-9 • Fr.



**No. 11 • Laine Pyles**  
OH • 6-2 • Fr.



**No. 12 • Bri Watson**  
OH • 6-1 • Fr.



**No. 13 • AC Froehlich**  
OH/RS • 6-1 • So.



**No. 14 • Rumur Rouille**  
MB • 6-4 • Sr.



**No. 16 • Mika Rome**  
S • 5-10 • R-Fr.



**No. 18 • Remi Nuss**  
DS/L • 5-6 • Fr.



**No. 23 • Jade Demps**  
RS • 6-2 • Sr.



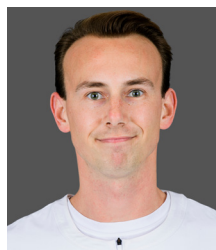
**No. 24 • Sophie Bonnafée**  
DS/L • 5-7 • Fr.



**Tonya Johnson**  
Head Coach  
Third Season



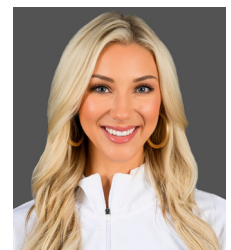
**Jill Wilson**  
Associate Head Coach  
Third Season



**Kevin Inlow**  
Assistant Coach  
Third Season



**Ashley Shook**  
Assistant Coach  
Third Season



**Blaire Hiler**  
Director of Operations  
Eighth Season