



NCAA TOURNAMENT
2007 • 2008 • 2009 • 2011 •
2015 • 2018 • 2021 • 2022 • 2023
2024

SEC TOURNAMENT CHAMPIONS
2018

SEC RUNNERS-UP
2008 • 2009 • 2011

SEC WEST CHAMPIONS
2007 • 2008 • 2009 • 2011

5

vs. Utah

Baton Rouge, La. (LSU Soccer Stadium)
7 p.m. CT
SECN+

2024 SCHEDULE

DATE OPPONENT LOCATION RESULT/TIME

AUGUST			
15	South Alabama	Mobile, Ala.	W, 3-0
25	Arizona State	Baton Rouge, La.	L, 2-5
29	UMass Lowell	Lowell, Mass.	W, 3-0

SEPTEMBER

1	Old Dominion	Norfolk, Va.	W, 2-1
5	Utah	Baton Rouge, La.	7 p.m.
8	UL-Lafayette	Baton Rouge, La.	6 p.m.
12	San Francisco	San Francisco, Calif.	8 p.m.
15	UC Davis	Davis, Calif.	2 p.m.
19	Arkansas*	Fayetteville, Ark.	6:30 p.m.
22	Ole Miss*	Baton Rouge, La.	6 p.m.
26	Oklahoma*	Baton Rouge, La.	6 p.m.
29	Mississippi St*	Starkville, Miss.	6:30 p.m.

OCTOBER

4	Auburn*	Baton Rouge, La.	7 p.m.
10	Kentucky*	Lexington, Ky.	6:30 p.m.
13	Texas*	Baton Rouge, La.	6 p.m.
18	Texas A&M*	College Station, Texas	7 p.m.
24	Vanderbilt*	Baton Rouge, La.	6 p.m.
27	Missouri*	Columbia, Mo.	3 p.m.

NOVEMBER

3	SEC Tournament	Pensacola, Fla.	TBA
15	NCAA Tournament	TBA	TBA

*SEC Match

On Air

TV: SECN+

Lyn Rollins, Play by Play
Artie Brown, Color Analyst

Live Stats

Live stats for the competition can be found on LSU Stat Broadcast or on lsusports.net/sports/sc/schedule.

Who To Contact

Assistant Communications

Director/Soccer Contact

Alyssa Leal
Email: aleal3@lsu.edu
Cell: 504-373-7428

Connect with LSU Soccer

@LSUSoccer

LSUSoccer

@LSUSoccer

The Matchup



LSU Tigers

Record: 3-1-0

Head Coach: Sian Hudson

Career Record: 92-39-19 (8th season)

LSU Record: 40-29-15 (5th season)



Utah

Record: 2-1-1

Head Coach: Hideki Nakada

Career Record: 20-26-17 (4th season)

At Utah: 20-26-17

Series History

Thursday's match will mark the first time the Utes and Tigers have ever met, as well as Utah's first road matchup with an SEC squad since they visited Alabama in 2019. LSU has gotten off a 3-1 start in 2024, the second straight year they've reached that mark through four games.

Last Time On The Pitch

The LSU Soccer Team defeated Old Dominion (3-2-0) by a score of 2-1 last Sunday night in the ODU Soccer Stadium. Sophomore forward Ava Galligan scored the game winner for the Tigers in the 85th minute to secure the Tigers second road win of the week.

The first 45 minutes of the match on Sunday consisted of a back and forth battle between the Tigers and the Monarchs, with neither team able to find the go-ahead.

Forward Mollie Baker tested the Old Dominion goalkeeper Emily Bredek early as she took a shot not even five minutes in. Angelina Thoreson took the first shot on target for the Tigers, while Ava Galligan, Andrea Iljic and Baker also tallied shots on goal.

LSU outshot Old Dominion six to one in the first half, but neither team was able to get on the board and the first half ended scoreless in Norfolk.

The Tigers came out hot to start the next 45 minutes. Midfielder Kelsey Major scored just five minutes into the second half, earning her first goal of the year and third of her career. Galligan sent a cross into the box that found the feet of Major, who took a touch and found the finish to put the Tigers on the board first.

The Monarchs responded 10 minutes later as Rhea Kijowski scored to even the match in the 60th minute.

The rest of the match consisted of an intense battle between the Tigers and the Monarchs as both teams looked for the advantage. In the 85th minute, Sydney Cheesman took a free kick that found the head of Galligan, who beautifully placed the ball in the back of the net for the game winner.

The Tigers came out on top in Norfolk to earn another three points on the road, totaling six points over the weekend. LSU took seven more shots in the second half, moving their total to 13 on the night, while Old Dominion tallied six shots.

Tiger goalkeeper Audi Scheving recorded two saves in the 76th and 88th minute. Already the team assist leader, Cheesman tallied another in Norfolk to move her total to four on the year.

Quote from Sian Hudson

"We had a great week on the road, securing two wins that really boosted our confidence. Now, we're excited to use that confidence and put on a performance in front of our home fans. This will be the first time that we welcome Utah to our home pitch. They're a very talented team and I have a huge amount of respect for Hideki (Nakada) and everything that he's done at Utah. I think Tiger fans will see an entertaining matchup as getting a win tomorrow is crucial for us."

Quick Facts

UNIVERSITY

Location	Baton Rouge, La.
Founded	1860
Enrollment	31,414
Nickname	Tigers or Fighting Tigers
Facility	LSU Soccer Stadium (2,197)
All-Time Home Record	147-87-33
Mascot	Mike VII (Live Bengal Tiger)
Colors	Purple and Gold
Conference	Southeastern
Affiliation	NCAA Division I
President & Chancellor	William Tate IV
Faculty Athletics Representative	Dr. Lori Martin

ATHLETIC DEPARTMENT

Director of Athletics	Scott Woodward
Executive Deputy AD/Executive Director of External Relations	Verge Ausberry
Executive Deputy AD/COO	Kelli Zinn
Sr. Associate AD/Facilities & Project Development	Emmett David
Sr. Associate AD/Athletics Facilities Management	Dan Gaston
Sr. Associate AD/ Health and Wellness	Shelly Mullenix
Sr. Associate AD/Sr. Woman Administrator	Miriam Segar
Interim Senior Advisor to the AD for Equity, Diversity & Inclusion Director, Student-Athlete Mental Health	Dr. Lakeitha Poole
Chief of Staff	Andrea Tepe

SOCCER STAFF

Head Coach	Sian Hudson (Fifth Season)
Alma Mater	Cardiff Metropolitan (2002)
Career Record(s)	90-38-19
at University of Colorado at Colorado Springs (2017-2019)	52-10-4
at LSU (Present)	38-28-16
Associate Head Coach	Seb Furness (Fifth Season)
Alma Mater	West Texas A&M (2012)
Assistant Coach	Antony Blackburn (First Season)
Alma Mater	St. Scholastica (2014)
Assistant Coach	Conor Cable (First Season)
Alma Mater	William Woods University (2018)
Director of Operations	Samantha Etherington
Strength & Conditioning	Dustin Ducree
Athletic Trainer	Hannah Faldetta

TEAM INFORMATION

2023 Record	8-8-4
2023 SEC Record	3-5-2
Letterwinners Returning/Lost	14/14
Starters Returning/Lost	8/4
Newcomers	15
Inaugural Season	1995
Overall Record	258-240-74

ATHLETIC COMMUNICATIONS

Associate AD/Communications	Michael Bonnette
Sr. Associate Communications Director	Bill Franques
Sr. Associate Communications Director	Kent Lowe
Assistant Communications Director (Soccer Contact)	Alyssa Leal

CREATIVE SERVICES

Executive Director / Creative Services	Jason Feirman
Creative Services Coordinator	Lindsey Thompson
Creative Services Coordinator	Tyler Schiefelbein
Creative Services Coordinator	Stephanie Lyles
Photography Coordinator	Chris Parent
Executive Director of Creative Content	Emily Dixon
Coordinator of Creative and Digital Content	Matt Tornquist
Chief Brand Officer	Cody Worsham

MEDIA CONTACT INFORMATION

Athletic Communications	(225) 578-8226
Alyssa Leal's Mobile	(504) 373-7428
Alyssa Leal's E-Mail	aleal3@lsu.edu
Website	LSUsports.net

SOCCER CONTACT INFORMATION

Director of Operations	Samantha Etherington
------------------------	----------------------

Sam Etherington's Mobile	(318)-730-4934
Sam Etherington's E-Mail	setherington@lsu.edu
Soccer Office	(225) 578-3947

2024 LSU SOCCER SCHEDULE

AUGUST

15	South Alabama	Mobile, Ala.	W, 3-0
25	Arizona State	Baton Rouge, La.	7 p.m.
29	UMass Lowell	Lowell, Mass.	5 p.m.

SEPTEMBER

1	Old Dominion	Norfolk, Va.	6 p.m.
5	Utah	Baton Rouge, La.	7 p.m.
8	UL-Lafayette	Baton Rouge, La.	6 p.m.
12	San Francisco	San Francisco, Calif.	8 p.m.
15	UC Davis	Davis, Calif.	2 p.m.
19	Arkansas*	Fayetteville, Ark.	6:30 p.m.
22	Ole Miss*	Baton Rouge, La.	6 p.m.
26	Oklahoma*	Baton Rouge, La.	6 p.m.
29	Mississippi St*	Starkville, Miss.	6:30 p.m.

OCTOBER

4	Auburn*	Baton Rouge, La.	7 p.m.
10	Kentucky*	Lexington, Ky.	6:30 p.m.
13	Texas*	Baton Rouge, La.	6 p.m.
18	Texas A&M*	College Station, Texas	7 p.m.
24	Vanderbilt*	Baton Rouge, La.	6 p.m.
27	Missouri*	Columbia, Mo.	3 p.m.

NOVEMBER

3	SEC Tournament	Pensacola, Fla.	TBA
15	NCAA Tournament	TBA	TBA

*SEC Match

MEDIA INFORMATION

The 2024 LSU Soccer Record Book was written to provide members of the media with statistics and information needed to adequately cover the LSU Soccer team. For further information on the team and the scheduling of interviews with head coach Sian Hudson, associate head coach Seb Furness, assistant coaches Tiffany Hansen and Trey Thompson or LSU student-athletes, please contact Alyssa Leal in the LSU Athletic Communications Department at (504)-373-7428.

MAILING ADDRESS

LSU Athletic Communications
LSU Box 25095
Baton Rouge, LA 70803

OVERNIGHT MAILING ADDRESS

Athletic Administration Building, Fifth Floor
North Stadium Drive
Baton Rouge, LA 70894

CREDENTIALS

Media credentials should be requested prior to each game. Season credentials are also available upon request. Passes will be available for pick up in the press box at the LSU Soccer Stadium. All requests should be made by contacting Alyssa Leal via phone or email.

INTERVIEWS

Postgame interviews, including those with players and coaches from both teams, will be held on the field approximately five minutes following the completion of each match. Alyssa Leal will take interview requests during the second half of each match and coordinate with the requested coach or student-athlete for postgame interviews. Game information, including halftime and final game statistics, will be provided in the press box.

Practices are also open to the media with Sian Hudson and the players available for interviews after each session. Contact Alyssa Leal to make arrangements to cover a practice.

LSU SOCCER ON THE SEC NETWORK

The Southeastern Conference and ESPN have a 20-year agreement through 2034 to create a multi-platform SEC Network which launched in August 2014. The SEC Network and its accompanying digital platform airs SEC content 24/7, including more than 1,000 events annually.



CREDITS

Editor	Alyssa Leal
Design and Layout	Alyssa Leal, Jason Feirman
Cover Design	Perry Spitzer
Photography	Chris Parent, Gus Stark, Beau Brune

2024 SEC Watchlist



Mollie Baker / F / Grad.



Jazmin Ferguson / D / Jr.



Ida Hermannsdottir / M / Jr.



Sydney Cheesman / D / Jr.



Ava Galligan / F / So.

2024 SEC Watchlist Cont.

Five Tigers on the LSU Soccer squad were named to the 2024 SEC Soccer Preseason Watchlist. A total of 88 student-athletes were named to this year's watchlist, as Mollie Baker, Jazmin Ferguson, Ida Hermannsdottir, Ava Galligan and Sydney Cheesman are the Tigers to keep an eye on this year.

Baker, Hermannsdottir and Galligan all return to LSU this year, while Ferguson and Cheesman transferred to the team this spring and enter their first season in the Purple and Gold.

A captain and leader on this year's LSU squad, Baker enters her final season with the Tigers in 2024. The Gilbert, Arizona native was the only player to appear and start in all 20 matches for the Tigers last year. The forward tallied three goals, five assists, and 1,551 minutes on the pitch while earning United Soccer Coaches All-Southeast Region Third Team honors in 2023.

A native of Reykjavic, Iceland, Hermannsdottir continues to be one of the top midfielders to watch in the nation. She enters year three at LSU with 11 goals, four assists and 2,366 minutes in her career.

Galligan, a dual forward/midfielder out of Ashburn, Virginia, enters her second year with the Tigers after a breakout debut season in 2023. She recorded four goals, five assists and played in all 20 matches in her freshman season.

Ferguson joined the squad from East Carolina University, where she spent two seasons and was the 2023 American Athletic Conference Co-Defensive Player of the Year. A native of Conyers, Georgia, she will serve as a vice captain on the squad as she enters her junior season this upcoming fall. United Soccer Coaches named her a defender to watch in 2024.

Cheesman is a defender out of Lafayette, Colorado, who transferred to LSU from the University of North Carolina, where she tallied 175 minutes on the pitch in her nine games played and helped lead the Tar Heels to two NCAA Tournament appearances. The defender was rated four stars by Top Drawer Soccer in the recruiting rankings in 2022 prior to starting her collegiate career at UNC.

The Captains

LSU is captained by the veteran duo of Mollie Baker and Jaden Humbyrd this year. Transfer Jazmin Ferguson will also serve as a Vice Captain alongside the two.

A native of Gilbert, Arizona, Baker returns for her fifth and final season at LSU this fall. She is a key force for the Tigers on and off the pitch. Last year, she was the only player to appear and start in all 20 matches for the Tigers. In 2023, she scored three goals and recorded five assists on the year. Her five assists rank her inside the top 10 in the SEC. With a career-high 1,551 minutes on the year, she earned 2023 United Soccer Coaches All-Southeast Region Third Team honors.

Humbyrd is a native of Issaquah, Washington, and is a huge piece of the midfield for the Tigers. She returns both experience and leadership. She appeared in 17 matches last year, earning the start in seven of those. She recorded two shots on goal for the year and helped lead her team to their third consecutive NCAA postseason appearance.

Ferguson joined the squad from ECU, where she was one of the best defenders in program history. A native of Conyers, Georgia, the junior adds depth to the Tigers backline. She has already tallied her first goal in her first start in the Purple and Gold in the squad's season opener last Thursday. She will continue to be an experience player for the Tigers defensive unit throughout the year.

A Roster Near and Far

The 2024 roster features 29 athletes, 15 of which are newcomers to the squad.

Four countries are represented in the squad (United States, Iceland, Sweden and Prague). Goal keeper Audur Scheving is a native of Reykjavic, Iceland, the same hometown of key returner Ida Hermannsdottir. Freshman Natalie Dvorakova grew up in Czechia while Angelina Thoreson is a proud Swede.

Of the remaining 26 athletes, nine are native to Colorado. The remaining states that are represented among this year's squad are Louisiana (3), Virginia (3), California (2), Georgia (2), Texas (2), Arizona, Florida, Nebraska, and Washington.

The 2024 Schedule

LSU officially kicked off the new season against South Alabama on Thursday, August 15 in Mobile before opening at home this Sunday. The Tigers schedule this year features eight matches inside the LSU Soccer Stadium.

After Arizona State, the squad will also welcome Utah, UL-Lafayette, Ole Miss, Oklahoma, Auburn and Texas to Baton Rouge before concluding home play against Vanderbilt on Thursday, October 24.

LSU will travel to face University of Massachusetts Lowell, Old Dominion, San Francisco, University of California Davis, Arkansas, Mississippi State, Kentucky, Texas A&M and will close out the regular season at Missouri on Sunday, October 27.

The squad will compete against 10 SEC opponents throughout the regular season this year, including the newest league members Texas and Oklahoma.

View the full 2024 LSU Soccer Schedule with match times on lsusports.net.

Notebook

SEC TV Schedule

LSU Soccer will be featured on SEC Network twice throughout the regular season as the league revealed the 2024 soccer television slate on Thursday.

The Tigers matches against Vanderbilt on Thursday, October 24 and Missouri on Sunday, October 27 will air nationally at 6 p.m. CT and 3 p.m. CT, respectively.

The remaining matches on the 2024 LSU Soccer schedule will be available via streaming on SEC Network+ and ESPN+.

This year's SEC Network's soccer schedule features 26 matches, beginning with Iowa at Texas on Sunday, Aug. 25 at 1 p.m. CT.

This season, Thursday evenings will display doubleheader SEC action, with games starting at 6 p.m. and 8 p.m. Sundays will also be action-packed for viewers, with a tripleheader to cap off the regular season on Oct. 27.

The SEC Soccer Tournament will once again air in its entirety on SEC Network, with full coverage details announced at a later date.

SEC Preseason Coaches Poll

Arkansas was tabbed the favorite to win the 2024 Southeastern Conference women's soccer title in voting by the league's 16 head coaches.

A record seven SEC teams began the season ranked in the United Soccer Coaches preseason rankings: Georgia 14th, Arkansas 16th, Texas 17th, Mississippi State 18th, Alabama 20th, South Carolina 21st, and Texas A&M 25th.

LSU entered the new season at No. 10 in the conference preseason poll as the SEC kicked off their 32nd season of women's soccer.

Preseason Coaches' Poll

1. Arkansas
2. Texas
- 3t. Georgia
- 3t. South Carolina
5. Alabama
6. Mississippi State
7. Texas A&M
8. Tennessee
9. Vanderbilt
10. LSU
11. Auburn
12. Kentucky
- 13t. Florida
- 13t. Oklahoma
15. Ole Miss
16. Missouri

The 2024 Roster

This year's team is a mix of youth and experience. The roster is made up of 29 players, with one graduate student, two seniors, seven juniors, nine sophomores and 10 freshmen.

Mollie Baker and Jaden Humbyrd will lead the squad as captains this year, while ECU transfer Jazmin Ferguson will serve as the vice captain.

LSU has welcomed four new transfers for this upcoming season in Ferguson, Cheesman, Sophine Kevorkian (USD) and Gabbi Ceballos (TCU).

The veteran seniors include Baker, Humbyrd and Tori Gillis, who all enter their final season with the Tigers this year.

Kevorkian, Ferguson, Hermannsdottir, Cheesman, Jocelyn Ollivierre, Angelina Thoreson and Sage Glover make up the junior class. Thoreson returns to the pitch this year after sitting out of the 2023 season due to injury.

The sophomores on the squad are Ceballos, Danielle Shannon, Kelsey Major, Audur Scheving, Caley Swierenga, Andrea Ilijkic, Ava Galligan, Brielyn Knowles and Alyson Campbell.

The freshmen class includes Riley MacDonald, Amy Smith, Annaleigh Bruser, Katelyn Holt, Emerson DeLuca, Ava Amsden, Aurora Gaines, Senai Rogers, Sarah Stadler and Natalie Dvorakova.

The addition of Scheving to the squad brings LSU's total to four internationals on the roster. She is the second player to become a Tiger from Reykjavik, Iceland, along with Hermannsdottir. Other countries represented on the squad are Sweden and Czechia.

International Tigers

This summer, the program had two Tigers representing LSU on the international stage.

Junior transfer Sophine Kevorkian played on the Armenian National Team this summer. A native of San Diego, California, Kevorkian transferred to LSU in the spring and will play her first season with the Tigers this upcoming fall.

She joins the Tigers from the University of San Diego, where she totaled 3,000 minutes in between the posts, earning 34 starts and playing in a total of 36 matches for the Toreros.

The goalkeeper earned her first national call up to the Armenian team for their UEFA Women's Euro 2025 qualifying round matches against Bulgaria and Romania. Her Armenian descent comes from her grandfather on her father's side, allowing her to represent her family's country.

Sophomore Andrea Ilijkic also got a call up this summer, playing for the Croatian National Team. Nenad Gračan, head coach of the Croatian women's national football team, announced Ilijkic as one of 28 players selected to compete in the country's upcoming European Championship qualifying matches against Wales and Ukraine.

Ilijkic's Croatian descent comes from her father's family.

Defender To Watch

United Soccer Coaches named LSU Soccer junior, Jazmin Ferguson, a defender to watch in 2024.

The defenders watch list is the second position to be announced by the organization, as United Soccer Coaches will continue on its NCAA Division I Men's and Women's Players to Watch lists with the remaining positions.

The lists are compiled and released by the Division I All-America Committees to promote college soccer.

A native of Conyers, Georgia, Ferguson enters her junior season this upcoming fall and will be a force in the Tiger's backline. She will also serve as the Tigers Vice Captain in 2024.

Ferguson transferred to LSU in the spring after spending her first two seasons at East Carolina University, where she was the 2023 American Athletic Conference Co-Defensive Player of the Year.

In her collegiate debut season, she was named the AAC Freshman of the Year as well as earning Second-Team All-Conference and All-Freshman team nods. By the end of the season, she was rated the No. 56 defender in the nation by Top Drawer Soccer as only a freshman.

Last year, the Georgia native became the first East Carolina player in program history to win two postseason awards and just the third Defensive Player of the Year in team history (first since 2008).

Her playing experience will provide a veteran voice on the pitch for LSU while adding depth to the Tigers defensive unit.

The LSU Staff

Hudson enters her fifth season with the Tigers this year. Since beginning her tenure at LSU in 2019, she has propelled the program to unprecedented success alongside Associate Head Coach Seb Furness, who joined the coaching staff that same year.

Joining them on staff is Assistant Coaches Antony Blackburn and Conor Cable. Blackburn is a native of Derby, England, who initially joined the Tigers in Fall 2023 as an analyst. He will primarily assist with session planning and delivery, individual development plans, and opposition preparation. Prior to LSU, Blackburn served as Head Coach of Valencia C.F. U14's (Valencia, Spain), one of the most prestigious academies in the world of professional soccer.

Cable joins the Tigers from Lake Erie College, where he spent five years helping lead the storm to new heights. Cable will primarily lead the LSU goalkeeping unit and oversee LSU Soccer community service and outreach events.

The Spalding, England native brings a wealth of experience to Baton Rouge from both his previous work with the Lake Erie goalkeeping unit and his own professional experiences. Cable came through the professional system in England, playing for a variety of Premier League and Championship Clubs including Norwich City and Cardiff City, and spent his youth academy days at Bristol City Football Club.

Under Hudson's leadership, the LSU Tigers achieved significant milestones during the 2023 season, marking their ninth NCAA Tournament appearance and third consecutive postseason showing—the most straight appearances by a coach in LSU history. Notably, Hudson secured her first LSU NCAA Tournament victory with a first-round win against Lamar on November 11, 2022.

This upcoming season, Hudson and her staff will look to earn her fourth consecutive and LSU's 10th overall NCAA appearance. The Tigers also hope to secure the program's 14th ten-win season while in pursuit of an SEC and national championship.

Attendance is another important component for the Tigers, as Hudson and her staff are striving to set new attendance records inside the LSU Soccer Stadium in 2024. Three of the program's top ten largest crowds occurred under Hudson's tenure.

Tiger Notables

LSU now has four regular season matches under their belt as they ended their East Coast road trip in Norfolk on Sunday. The squad earned six points last week as they brought back two road wins over UMass Lowell and Old Dominion.

The Tigers own a record of 3-1-0 on the year, having marked wins over South Alabama (W, 3-0), UMass Lowell (W, 3-0) and Old Dominion (2-1) with one loss to Arizona State (L 5-2).

With their two wins on the road last week, LSU has already matched the amount of road victories tallied in 2023 as they look to beat last year's away record.

The Tigers have scored 10 goals through four matches so far this year as Ida Hermannsdottir, Jazmin Ferguson, Angelina Thoreson, Ava Galligan, Andrea Ijkic, Amy Smith and Kelsey Major have found themselves on the scoresheet.

Major scored her first of the year and third in her career in the Tigers last match against Old Dominion, while Galligan's game winner in the match was her second of the year and sixth in her career.

Galligan, Hermannsdottir and Ferguson lead the team with two goals each, while the rest have scored one.

The Tigers have recorded seven assists so far this year, with junior Sydney Cheesman leading the way. The UNC transfer has been pivotal in set pieces for LSU, recording a team high four assists through four matches. Her four assists on the year also shares the top spot for the most by a player in the conference.

Sage Glover, Jaden Humbyrd and Galligan have also tallied assists this year.

Overall, LSU has taken 78 shots on the year, with 38 of those being on target. Forward Mollie Baker and Galligan have taken the most shots with 13, while Angelina Thoreson follows with eight.

Scheving, the sophomore from Iceland who is in her first year with the Tigers, has started in between the posts for the Tigers in every match thus far. She has recorded 10 saves and two shutouts.

Hermannsdottir, Ferguson, Cheesman, Baker, Thoreson, Humbyrd, Glover, Shannon, Scheving and Caley Swierenga have started in every match for LSU this year.

The Opponent

Utah comes off a 7-1 victory over Weber State last Sunday prior to their first trip to Baton Rouge. The Utes are 2-1-1 on the year, marking victories over Weber State and Gonzaga, a draw against Grand Canyon and a loss to Utah State.

The Utes have outshot three of their four opponents this season. In Sunday's game against Weber State, they compared a 12-5 shooting total. In their match against GCU, they established a heavy advantage in total shots, outshooting their guests by a 14-3 margin. Utah could only boast of such a significant advantage in that statistic four times in 2023, the largest being a 32-12 margin in their win over Oregon.

On Sept. 1 against Weber State, for the first time on record in program history, two Utes tallied hat tricks in the same match. Both Katie O'Kane and Taliana Kaufusi booted in three goals in a 7-1 rout of the Wildcats. For O'Kane, this marked her second collegiate hat trick, the first coming on Oct. 1, 2023 at Oregon, while it was the first for Kaufusi. and Taliana Kaufusi booted in three goals in a 7-1 rout of the Wildcats. For O'Kane, this marked her second collegiate hat trick, the first coming on Oct. 1, 2023 at Oregon, while it was the first for Kaufusi.

2024 Soccer Staff



Sian Hudson

Head Coach
5th Year

- Hudson enters her fifth season leading the Tigers. She owns a 38-28-15 record in the Purple & Gold
- Hired as LSU head coach on Dec. 11, 2019
- 90-38-19 record as collegiate head coach
- Led the Tigers to the program's ninth NCAA Tournament appearance in 2023 for third time in her LSU career
- Only LSU coach to record three consecutive NCAA postseason appearances
- Recorded two 10+ winning seasons during her four seasons at LSU
- Led LSU to record of 8-8-3 in debut season; that was an +5 win improvement from the season before her arrival
- Nine Tigers have taken their career to the professional level under Hudson, including two NWSL draft selections
- Led University of Colorado at Colorado Springs to a NCAA Division II No. 1 ranking in 2019
- 2019 Rocky Mountain Athletic Conference Coach of the Year
- Took UCCS to the NCAA Division II Tournament in 2017, 2018, and 2019.
- Led the Colorado Pride (W-League) to Western



Seb Furness

Associate Head Coach
5th Year

- Vital staff member as he was promoted to Associate Head Coach in August 2022 after serving as an assistant coach in his first two years in Baton Rouge
- In Furness' time, the Tigers have reached the postseason in three consecutive years (2021, 2022, 2023)
- Helped LSU register six shutouts and a GAA of 0.95 in his first season in Baton Rouge
- Spent four seasons as goalkeepers coach at Colorado State (2016-19)
- Led sophomore goalkeeper Gabi McDonald (CSU) to the 10th best save percentage (.879) in the NCAA in 2019. McDonald was first keeper in CSU history to earn Mountain West First Team honors and was named to United Soccer Coaches All-Pacific Team
- Helped Colorado State lower goals allowed total of 36 in 2016 to only 15 in 2019. The Rams lowered goals allowed in each of the four seasons he was on staff
- Played the goalkeeper position at West Texas A&M from 2008-11. In 2009, his save percentage of .889 led NCAA DII
- Played professionally for Tindastoll FC in Iceland for a year and half following college



Antony Blackburn

Assistant Coach/Recruiting Coordinator
2nd Year

- Blackburn, a native of Derby, England, initially joined the Tigers in Fall 2023 as an analyst and will transition to an Assistant Coach position, effectively immediately. He will primarily assist with session planning and delivery, individual development plans, and opposition preparation.
- Served as Head Coach of Valencia C.F. U14's (Valencia, Spain), one of the most prestigious academies in the world of professional soccer. Blackburn led a technical staff and had a successful season both in the league and cup, reaching the final of the Madrid Cup against Atletico Madrid and winning the Crevillent Cup beating Villarreal CF
- Also served as the Assistant Coach of UD Vall D'Uxo, head coach of the U19s at the International Development Academy, and an Academy Coach at Sunderland AFC, a Category 1 Football Academy in the United Kingdom
- Played at the collegiate level as well with the St. Scholastica Saints, in Duluth, Minnesota



Conor Cable

Assistant Coach
1st Year

- Cable joins the Tigers from Lake Erie College, where he spent five years helping lead the storm to new heights. Cable will primarily lead the LSU goalkeeping unit and oversee LSU Soccer community service and outreach events
- The Spalding, England native brings a wealth of experience to Baton Rouge. Cable came through the professional system in England, playing for a variety of Premier League and Championship Clubs including Norwich City and Cardiff City, and spent his youth academy days at Bristol City Football Club
- Helped lead the Storm back to the GMAC final and their fourth consecutive NCAA tournament appearance last year.
- During his collegiate career, Cable was a three time First-team All-Conference member and national defensive player of the week at William Woods University in Missouri
- Following Cable's collegiate career, he played for Cleveland SC in the National Premier Soccer League (NPSL) in the summer of 2021. While in a playing position with the team, his role also included working with goalkeepers.



Dustin Ducree

Strength & Conditioning
1st Year



Hannah Faldetta

Athletic Trainer
11th Year

- Served as LSU soccer's athletic trainer since 2014
- Graduate assistant at West Virginia University and earned her master's degree in Athletic Training
- Attended Purdue University for undergrad and graduated in 2012 with a degree in athletic training
- Studied abroad in China during her time at Purdue at the Beijing Sport University

2024 Roster



Katelyn Holt
5-11 • Fr. • GK
Waterford, Va.
St. Paul VI Catholic HS



Sophie Kevorkian
5-8 • Jr. • GK
San Diego, Calif.
San Diego/ La Jolla HS



Audur Scheving
5-10 • So. • GK
Reykjavik, Iceland
Reykjavik University/Menntaskólinn við Sund



Jocelyn Ollivierre
5-7 • Jr. • D
Colorado Springs, Colo.
Air Academy HS



Jazmin Ferguson
5-9 • Jr.. • D
Conyers, Ga.
Heritage HS



Riley MacDonald
5-8 • Fr. • M
Highlands Ranch, Colo.
Mountain Vista HS



Danielle Shannon
5-1 • So. • M
Houston, Texas
Houston Dash Academy



Amy Smith
5-11 • Fr. • F
Fort Collins, Colo.
Fossil Ridge HS



Ida Hermannsdottir
5-10 • Jr. • M
Reykjavik, Iceland
Valur Reykjavik



Angelina Thoreson
5-5 • Jr. • F
Uppsala, Sweden
IK Uppsala



Sydney Cheesman
5-6 • Jr. • D
Lafayette, Colo.
North Carolina/Centurion HS



Annaleigh Bruser
5-10 • Fr. • D
Baton Rouge, La.
IMG Academy



Emerson Deluca
5-4 • Fr. • D
Westminster, Colo.
Broomfield HS



Caley Swierenga
5-9 • So. • D
Denver, Colo.
Lutheran HS



Kelsey Major
5-5 • So. • M
New Orleans, La.
St. Mary's Dominican HS



Andrea Ilijkic
5-7 • So. • F
Littleton, Colo.
Columbine HS



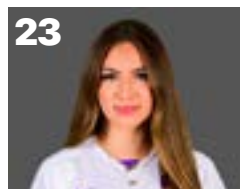
Ava Galligan
6-0 • So. • F/M
Ashburn, Va.
Independence HS



Tori Gillis
5-7 • Sr. • M
Leesburg, Va.
Loudoun County HS



Ava Amsden
5-6 • Fr. • M
Colorado Springs, Colo.
Pine Creek HS



Gabbi Ceballos
5-8 • So. • M
San Antonio, Texas
TCU/John Paul Stevens HS



Aurora Gaines
5-8 • Fr. • F
Milton, Ga.
Cambridge HS



Senai Rogers
5-7 • Fr. • F
Elk Grove, Calif.
Franklin HS



Sarah Stadler
5-9 • Fr. • M
New Berlin, Wisc.
New Berlin Eisenhower HS



Brielyn Knowles
5-8 • So. • M
Orlando, Fla.
Windermere Prep



Jaden Humbyrd
5-6 • Sr. • M
Issaquah, Wash.
Issaquah HS



Natalie Dvorakova
5-4 • Fr. • D
Prague, Czechia
C.E. Byrd HS



Alyson Campbell
5-6 • So. • GK
Boulder, Colo.
Fairview HS



Sage Glover
5-2 • Jr. • F
New Orleans, La.
North Atlanta HS



Mollie Baker
5-7 • Gr. • F
Gilbert, Ariz.
North Carolina/Williams Field HS



LSU Soccer
2024 Roster

No.	Full Name	Position	Height	Class	Hometown	High School
0	Katelyn Holt	Goalkeeper	5-11	Fr.	Waterford, Va.	St. Paul VI Catholic HS
00	Sophine Kevorkian	Goalkeeper	5-8	Jr.	San Diego, Calif.	La Jolla HS
1	Auður Scheving	Goalkeeper	5-10	So.	Reykjavik, Iceland	Menntaskólinn við Sund
2	Jocelyn Ollivierre	Defender	5-7	Jr.	Colorado Springs, Colo.	Air Academy HS
4	Jazmin Ferguson	Defender	5-9	Jr.	Conyers, Ga.	Heritage HS
6	Riley MacDonald	Midfielder	5-8	Fr.	Highlands Ranch, Colo.	Mountain Vista HS
8	Danielle Shannon	Midfielder	5-1	So.	Houston, Texas	Houston Dash Academy
9	Amy Smith	Forward	5-11	Fr.	Fort Collins, Colo.	Fossil Ridge HS
10	Ida Hermannsdottir	Midfielder	5-10	Jr.	Reykjavik, Iceland	Valur Reykjavik
11	Angelina Thoreson	Forward	5-5	Jr.	Uppsala, Sweden	Celsiuskolan
12	Sydney Cheesman.	Defender	5-6	Jr.	Lafayette, Colo.	Centaurus HS
14	Annaleigh Bruser	Defender	5-6	Fr.	Baton Rouge, La.	IMG Academy
16	Emerson DeLuca	Defender	5-4	Fr.	Westminster, Colo.	Broomfield HS
17	Caley Swierenga	Defender	5-9	So.	Denver, Colo.	Lutheran HS
18	Kelsey Major	Midfielder	5-5	RS So.	New Orleans, La.	St. Mary's Dominican HS
19	Andrea Iljkic	Forward	5-7	So.	Littleton, Colo.	Columbine HS
20	Ava Galligan	Forward	6-0	So.	Ashburn, Va.	Independence HS
21	Tori Gillis	Midfielder	5-7	Sr.	Leesburg, Va.	Loudoun County HS
22	Ava Amsden	Midfielder	5-6	Fr.	Colorado Springs, Colo.	Pine Creek HS
23	Gabbi Ceballos	Midfielder	5-8	So.	San Antonio, Texas	John Paul Stevens HS
24	Aurora Gaines	Forward	5-8	Fr.	Milton, Ga.	Cambridge HS
25	Senai Rogers	Forward	5-7	Fr.	Elk Grove, Calif.	Franklin HS
26	Sarah Stadler	Midfielder	5-9	Fr.	New Berlin, Wisc.	New Berlin Eisenhower HS
28	Brielyn Knowles	Midfielder	5-8	So.	Orlando, Fla.	Windermere Preparatory School
29	Jaden Humbyrd	Midfielder	5-6	Sr.	Issaquah, Wash.	Issaquah HS
30	Natalie Dvorakova	Defender	5-4	Fr.	Prague, Czechia	C.E. Byrd HS
32	Alyson Campbell	Goalkeeper	5-6	So.	Boulder, Colo.	Fairview HS
50	Sage Glover	Forward	5-2	Jr.	New Orleans, La.	North Atlanta HS
71	Mollie Baker	Forward	5-7	Gr.	Gilbert, Ariz.	Williams Field HS

Coaching Staff:

Head Coach – Sian Hudson (pronounced as Shawn) – 5th Season

Associate Head Coach – Seb Furness – 5th Season

Assistant Coach – Antony Blackburn – 1st Season

Assistant Coach – Conor Cable – 1st Season

2024 Pronunciation Guide:

00 – Sophine Kevorkian	So-FEEN	Kuh-VOR-kee-in
1 – Auður Scheving	OW-dee	Shkiv-ing
2 – Jocelyn Ollivierre	Jaw-suh-lyn	Ole-lee-vair-ay
10 – Ida Hermannsdottir	Ee-duh	Her-mans-daw-ter
11 – Angelina Thoreson	An-jel-ee-nah	Thaw-sun
14 – Annaleigh Bruser	ANN-uh-lee	BREW-zer
16 – Emerson DeLuca	Em-mer-son	Deh-loo-kuh
17 – Caley Swierenga	KAY-lee	SWAIR-ing-uh
19 – Andrea Iljkic	Un-DREY-uh	ILL-keesh
22 – Ava Amsden	A-vuh	AMS-din
23 – Gabbi Ceballos	Gah-bee	Suh-BYE-ose
24 – Aurora Gaines	Uh-roar-uh	Gain-z
25 – Senai Rogers	Seh-NEYE	Rah-gers
28 – Brielyn Knowles	BREE-lin	Noles
29 – Jaden Humbyrd	Jay-den	Hum-bird
30 – Natalie Dvorakova	Nat-uh-lee	d-vor-KOE-vuh

Sian Hudson

HEAD COACH • 5th Season



Sian (pronounced SHAWN) Hudson was named LSU's head coach on December 11, 2019. Since that date, she's helped take LSU to places it's never been before as she enters her fifth season with the Tigers in 2024. In her four years thus far, Hudson has propelled the program to unprecedented success alongside Associate Head Coach Seb Furness, who joined the coaching staff that same year.

Under Hudson's leadership, the LSU Tigers achieved significant milestones during the 2023 season, marking their ninth NCAA Tournament appearance and third consecutive postseason showing—the most straight appearances by a coach in LSU history. Notably, Hudson secured her first LSU NCAA Tournament victory with a first-round win against Lamar on November 11, 2022.

Hudson's coaching achievements were recognized by the Louisiana Sports Writers Association (LSWA) as she was named the Coach of the Year in 2023, highlighting her impact on the state's soccer scene. In 2022, the Tigers achieved their 13th ten-win season and recorded five shutouts throughout the year. Hudson's coaching prowess was further highlighted by victories over two ranked opponents, including a historic top-10 win against No. 9 Texas on August 24, marking LSU's first-ever victory against Texas and their first top-10 road win. In her third season as head coach of the Fighting Tigers, Hudson led her squad to the program's eighth NCAA Tournament appearance in 2022 and second postseason appearance in her LSU career. The Tigers' first round win over Lamar on November 11 marked Hudson's first victory in the NCAA Tournament. Last year, Hudson recorded the program's 13th ten-win season with an overall record of 10-4-7 in 2022. The Tigers shutout five opponents and recorded a draw against three ranked opponents. In three short years, Hudson and the Tigers have shattered LSU Soccer Stadium attendance records. Two of the program's top ten all-time largest crowds were under Hudson as LSU continues to be one of the top program's nationally with fan attendance, earning Top 15 status in 2021.

Hudson and the Tigers placed No. 5 in the national rankings in 2021, which marked the highest in program history. In her second year, she amassed five wins over nationally ranked teams and helped LSU earn its seventh trip to the NCAA Tournament. The 2021 fall season started off about as good as it could have with the Tigers winning eight straight under the direction of Hudson. Included in those eight straight wins were triumphs over three ranked squads – No. 15 USF, No. 19 UCF, and No. 21 Arizona State. Pair those eight wins with the final three from the spring season of 2021 and LSU had won a program record 11 straight games. LSU tallied a total of four ranked wins during the 2022 season. The aforementioned three above in an 11-day span from late August to early September, and then the biggest one of them all came in the regular season finale against No. 4 Arkansas. With LSU's season on the line, the Tigers came out with a fiery passion under Hudson on Oct. 28, 2021, as the Tigers handed the Razorbacks their first and only loss of the conference regular season with a 4-2 victory. The win solidified LSU's positioning in the SEC and NCAA Tournament and was the highest ranked win in program history.

The LSU faithful caught on to the wonderful display of soccer being played and showed out on Sept. 17, 2021 as LSU opened up SEC play against Mississippi State in Baton Rouge. A school record crowd of 3,021 showed up and supported the Tigers en route to a 2-0 shutout victory over Mississippi State in what was a raucous environment. Hudson and company have invested an ample amount of time in the Baton Rouge community and it has showed. The program is on the rise and the LSU faithful has a knack for supporting winners. LSU averaged 1,334 fans per home match during the 2021 season to set the program, and that average ranked as the 12th highest in the nation.

Hudson's first win of her LSU career came on November 13, 2020, as the Tigers shutout Alabama for a 2-0 win over Alabama in the first round of the SEC Tournament in Orange Beach, Alabama. The Tigers followed that up with a 2-1 win over No. 14 Ole Miss two days later to advance to the SEC quarterfinals in their first SEC Tournament appearance under Hudson's reign.

The LSU soccer program has seen significant individual honors under Hudson's leadership, including three All-Region selections, eight All-SEC members, nine All-Louisiana selections, and one Freshman All-American, Ida Hermannsdóttir. Off the field, Hudson has shattered LSU Soccer Stadium attendance records, with three of the program's top ten largest crowds occurring under her tenure. LSU continues to be a national leader in fan attendance, ranking in the Top 15 nationally in 2021.

Academic success has also been a priority for the Tigers, with LSU Soccer maintaining an above 3.20 GPA average since Hudson's arrival. The team has earned seven Academic All-District honors and produced over 25 graduates since 2019, reflecting the program's commitment to nurturing achievement both on and off the field.

In terms of player development, Hudson's commitment to nurturing talent is evident, with multiple players progressing to the professional ranks since her arrival at LSU. Wasila Diwura-Soale, Maya Gordon, Mollie Swift, Lindsie Jennings, Shannon Cooke, Alesia Garcia, Brenna McPartlan, Olivia Wilkes, Tinaya Alexander, and Athena Kuehn are among those who have benefited from Hudson's coaching and are now thriving in professional leagues worldwide.

Hudson came to LSU with nearly 20 years of coaching experience. She came to Baton Rouge after serving as the head coach at the University of Colorado at Colorado Springs for the past three seasons. During her time as head coach at UCCS, Hudson led the Mountain Lions to a 52-10-4 record. Each of those three seasons saw UCCS qualify for the NCAA Tournament, the first three appearances in school history, including a run to the national semifinals in 2017. Her win totals in each of the three seasons – 17 in 2017, 16 in 2018, and 19 in 2019 – were the three winningest seasons in program history.

Hudson, the 2019 Rocky Mountain Athletic Conference Coach of the Year, led UCCS to a No. 1 national ranking for the first time in program history in 2019 as the Mountain Lions marched to a record of 19-2 and a NCAA South Central Region No. 1 seed in the NCAA Tournament. records. She and her staff at UCCS earned South Central Region Staff of the year honors in their debut season in 2017. That campaign saw the Mountain Lions go 17-5-1, make a run to the semifinals of the NCAA Tournament, and win the first ever Rocky Mountain Athletic Conference title in program history.

Prior to taking the head job at UCCS, Hudson spent two seasons as an assistant coach at NCAA Division I program Colorado College in Colorado Springs. In her two-year stint, she assisted in every aspect of the program and helped Colorado College reach the semifinals of the 2015 Mountain West Tournament.

A solid player in her own right, Hudson played on the Wales National Team and was at one point the youngest international player on the squad at the age of 16. She earned three caps on the senior level at the European Championships from 1997 to 1999, and she made 10 appearances at the UEFA Championships as a captain for the U19 squad. Hudson captured five senior league championships, three league cups and the Welsh Cup for Newport County Ladies squad from 1995-2000.

Hudson earned her bachelor's in Sports Coaching Science, majoring in sport psychology from Cardiff Metropolitan University in 2002. She's graduated with her master's degree in sports coaching from the University of Denver in May of 2020. She holds her U.S. Soccer Federation B License, and the UEFA C License and Goalkeepers Award.



SIAN HUDSON

HOMETOWN	Newport, Wales
EDUCATION	Cardiff Metropolitan University (2002), University of Denver (2020)
HUSBAND	Rance
CHILDREN	Olivia, Reid

COACHING CAREER

Season	School/Team	Position
2019-Pres.	LSU	Head Coach
2017-19	UCCS	Head Coach
2015-17	Colorado College	Assistant Coach
2014-15	Colorado Pride	General Manager*
2015	Colorado Pride	Head Coach*
2014	Colorado Pride	Assistant Coach*
2002-15	Pride Soccer Club	Director

*Colorado Pride was in the W-League

CAREER RECORD

Season	School/Team	Record
2024	LSU	3-1-0
2023	LSU	8-8-4
2022	LSU	10-4-7
2021	LSU	11-8-1
2020-21	LSU	8-8-3
2019	UCCS	19-2-0
2018	UCCS	16-3-3
2017	UCCS	17-5-1
Total		92-39-19

SIAN HUDSON 2019-PRESENT



YEAR	OVERALL	SEC
2020-21	8-8-3	0-6-2 (7th SEC West)
2021	11-8-1	4-6 (5th SEC West)
2022	10-4-7	4-2-4 (5th SEC West)
2023	8-8-4	3-5-2 (6th SEC West)
2024	3-1-0	
Totals	40-29-16	11-19-8

LSU's Record When Under Sian Hudson

Home.....	19-10-6
Away	15-16-6
Neutral.....	5-3-3
vs. Ranked Opp.	7-10-4
Leading at Half.....	27-2-2
Trailing at Half	3-16-4
Tied	6-9-9

Taking More Shots	24-6-4
Taking Fewer Shots.....	11-21-9
Equal Shots	3-1-1
More Corners.....	23-8-2
Less Corners.....	14-15-9
Equal Corners	0-4-4

Scoring First.....	30-4-4
Opp. Scores First	8-23-3

When Scoring Two or More Goals	31-3-4
When Scoring None	0-15-8
When Scoring One Goal.....	5-8-3
When Scoring Two Goals.....	15-2-3
When Scoring Three Goals	8-0-1
When Scoring Four Goals	4-0-0
When Scoring Five Goals	4-0-0
When Scoring Six Goals	1-0
When Scoring Eight Goals	1-0-0

LSU's Record Under Sian Hudson vs. SEC Opponents

Home.....	8-7-4
Away	3-12-5
Neutral.....	3-2-2
vs. Ranked Opp.	3-6-3
Leading at Half.....	7-0-1
Trailing at Half	2-13-2
Tied	5-7-8

Taking More Shots	5-3-1
Taking Fewer Shots.....	8-18-9
Equal Shots	1-1-1
More Corners.....	5-5-2
Less Corners.....	9-13-7
Equal Corners	0-3-2

Scoring First.....	9-1-2
Opp. Scores First	5-20-2

When Scoring Two or More Goals	12-1-2
When Scoring None	0-14-7
When Scoring One Goal.....	2-6-2
When Scoring Two Goals.....	7-1-1
When Scoring Three Goals	2-0-1
When Scoring Four Goals	3-0-0
When Scoring Five+ Goals.....	N/A

TOP 10 ATTENDANCES

1

3,021

Sept. 17, 2021 vs. Mississippi St
(LSU won 2-0)

2

2,624

Aug. 24, 2012 vs. Rice (Tied 1-1)

3

2,542

Sept. 9, 2011 vs. Oregon
(LSU won 1-0)

4

2,402

Oct. 5, 2007 vs. #6 Tennessee
(LSU won 3-0)

5

2,160

Sept. 14, 2007 vs. McNeese State
(LSU won 5-0)

6

2,029

Sept. 29, 2023 vs. Florida
(L, 0-4)

7

2,004

Sept. 22, 2022 vs. Missouri
(W, 2-1)

8

1,982

Oct. 1, 2010 vs. Alabama
(Tied 0-0)

9

1,910

Sept. 14, 2012 vs. #10 Texas A&M
(Texas A&M won 1-0)

10

1,828

Aug. 31, 2007 vs. Southern Miss
(LSU won 3-0)

The LSU Soccer Stadium saw the 2007 and 2015 seasons standing out the most with unbeaten records on the home pitch. 2007 saw the Tigers go 5-0-3 and 2015's unbeaten record at home was 8-0-4.

The impressive run with an unbeaten 5-0-3 home slate in 2007 was followed by an impressive 8-1 campaign in 2008, a 7-1-2 season in 2009, a 6-2-1 mark in 2010 and a stellar 7-1-1 season in 2011. While winning four SEC Western Division championships and making four trips to the NCAA Tournament from 2007-11, the Tigers posted a 33-5-7 record with a .811 winning percentage. They most recently finished the 2015 season unbeaten at home with an 8-0-4 mark in 12 matches played in Baton Rouge.

In fact, LSU's home performance is highlighted by a school record 18-game home unbeaten streak that came to an end on Oct. 26, 2008, with a 2-1 defeat to the No. 6-ranked Florida Gators.

The 2021 season saw multiple record breaking moments for the Tigers. LSU had the longest winning streak in the program with eight straight victories. The soccer stadium also saw a record breaking attendance in the 2021 season. In the Tigers match against Mississippi State on September 17, a crowd of 3,021 people showed out to watch the Tigers defeat the Bulldogs 2-0 at home. The attendance marked the highest in program history. LSU averaged 1,334 fans per home match during the 2021 season to set the program record, and that average ranked as the 12th highest in the nation.

In 2022, Hudson drew in the sixth largest crowd in program history against Missouri with 2,004 fans on September 22.

Last year, Hudson and the Tigers continued to shatter LSU Soccer Stadium attendance records as they welcomed another Top-10 crowd in program history in a conference matchup against Florida.

2024 marks the 29th season in the life of the LSU Soccer Stadium, which was first opened on Sept. 13, 1996, when the Tigers hosted SEC rival Tennessee.

YEAR-BY-YEAR RESULTS LSU SOCCER STADIUM

	W	L	T
1995 *	9	2	1
1996	4	4	0
1997	0	9	0
1998	5	5	1
1999	4	6	0
2000	7	3	0
2001	5	2	1
2002	6	2	2
2003	7	2	0
2004	6	5	0
2005	5	3	0
2006	6	2	2
2007	5	0	3
2008	8	1	0
2009	7	1	2
2010	6	2	1
2011	7	1	1
2012	5	5	3
2013	4	3	2
2014	3	6	2
2015	8	0	4
2016	2	6	1
2017	6	4	1
2018	7	1	2
2019	2	5	1
2020-21	2	4	1
2021	5	2	0
2022	6	1	2
2023	6	2	3
Totals	153	89	36

*The 1995 inaugural season was played on the University High field adjacent to the football

OPPONENT HISTORY



OPPONENT	RECORD	FIRST GAME	LAST GAME
Alabama	9-15-6	1995 - Alabama, 2-0	2023 - Alabama, 4-1
Alabama A&M	3-0	2000 - LSU, 10-1	2002 - LSU, 9-0
Arizona	1-2-0	2015 - LSU, 2-0	2021 - LSU, 2-0
Arizona State	1-2	2019 - ASU, 1-0	2024 - ASU, 5-2
Arkansas	15-11-5	1995 - LSU, 2-1	2023 - Draw, 1-1
Arkansas-Little Rock	2-1	1995 - LSU, 5-0	1997 - UALR, 2-0
Auburn	8-21-4	1995 - LSU, 2-1	2023 - Auburn, 3-0
Auburn-Montgomery	1-0	2001 - LSU, 4-1	2001 - LSU, 4-1
Austin Peay	1-0	2017 - LSU, 3-1	2017 - LSU, 3-1
Ball State	0-0-1	2015 - Draw, 1-1	2015 - Draw, 1-1
Baylor	1-0	2020 - LSU, 1-0	2020 - LSU, 1-0
Belmont	1-0	2005 - LSU, 2-0	2005 - LSU, 2-0
Birmingham Southern	1-0-1	2003 - LSU, 3-0	2005 - Draw, 1-1
Boston University	1-0	2018 - Draw, 0-0	2018 - Draw, 0-0
Butler	1-0	2016 - LSU, 2-1	2016 - LSU, 2-1
BYU	2-1-1	2008 - LSU, 4-1	2014 - LSU, 4-3
Centenary	2-1	1995 - Centenary, 4-0	2008 - LSU, 7-0
Central Florida	1-1-2	2009 - Draw, 0-0	2022 - Draw, 1-1
Clemson	0-1	1998 - Clemson, 7-0	1998 - Clemson, 7-0
Cincinnati	1-1	2017 - LSU, 1-0	2018 - Cincinnati, 2-1
Colgate	1-1	2016 - Colgate, 2-1	2017 - LSU, 3-0
College of Charleston	2-0	2007 - LSU, 4-0	2016 - LSU, 1-0
Colorado	0-2-1	1996 - Colorado, 2-1	2004 - Colorado, 4-1
Colorado College	0-1	1997 - CC, 3-0	1997 - CC, 3-0
Coastal Carolina	1-0	2003 - LSU, 2-1	2003 - LSU, 2-1
Creighton	0-2	1996 - Creighton, 3-1	1997 - Creighton, 2-1
Dallas Baptist	0-1	2020 - DBU, 2-1	2020 - DBU, 2-1
Davidson	0-1	2007 - Davidson, 3-0	2007 - Davidson, 3-0
Dayton	0-1	2004 - Dayton, 3-0	2004 - Dayton, 3-0
Duke	1-2-1	2009 - Draw, 2-2	2019 - Duke, 6-0
Embry-Riddle	1-0	2000 - LSU, 2-0	2000 - LSU, 2-0
Florida	2-21-2	1995 - Florida, 7-0	2023 - Florida, 4-0
Florida International	0-0-1	2012 - Draw, 0-0	2012 - Draw, 0-0
Florida State	1-3-1	1995 - Draw, 1-1	2022 - Florida State, 4-1
George Washington	1-1	2016 - GW, 3-1	2017 - LSU, 2-0
Georgia	8-11-4	1996 - Georgia, 3-1	2023 - LSU, 3-2
Grambling	1-0	2022 - LSU, 3-1	2022 - LSU, 3-1
Houston	3-0-1	2006 - LSU, 6-1	2012 - LSU, 2-0
Illinois	0-1	2010 - Illinois, 1-0	2010 - Illinois, 1-0
Illinois State	1-0	1996 - LSU, 5-0	1996 - LSU, 5-0
Indiana	2-0	2015 - LSU, 4-0	2016 - LSU, 3-0
Jackson State	2-0	2003 - LSU, 12-0	2005 - LSU, 4-0
Jacksonville State	1-0	1996 - LSU, 5-1	1996 - LSU, 5-1
James Madison	0-1	2019 - JMU, 1-0	2019 - JMU, 1-0
Kansas	0-1	1995 - Kansas, 2-1	1995 - Kansas, 2-1
Kentucky PK's)	9-13-3	1995 - Kentucky, 4-0	2023 - Draw, 0-0 (UK advanced on
Lamar	4-0	2016 - LSU, 4-0	2022 - LSU, 3-1
Liberty	2-0	2017 - LSU, 1-0	2018 - LSU, 1-0
Louisiana-Lafayette	10-0	2000 - LSU, 4-0	2021 - LSU, 5-0
Louisiana-Monroe	5-0-1	1999 - LSU, 5-0	2021 - LSU, 6-0
Louisiana Tech	2-0	2007 - LSU, 2-0	2013 - LSU, 1-0
Loyola-Chicago	1-0	2008 - LSU, 2-1	2008 - LSU, 2-1
Loyola (Md.)	1-0	2003 - LSU, 2-0	2003 - LSU, 2-0
Loyola (N.O.)	1-0	2002 - LSU, 7-0	2002 - LSU, 7-0
Maryland	0-1	1998 - Maryland, 7-0	1998 - Maryland, 7-0
Marquette	1-1	2014 - Marquette, 2-1	2015 - LSU, 5-1
Md. -Baltimore County	1-0	1995 - LSU, 2-1	1995 - LSU, 2-1

OPPONENT	RECORD	FIRST GAME	LAST GAME
McNeese State	9-1	1996 - LSU, 9-0	2019 - LSU, 1-0
Memphis	4-5	1995 - LSU, 5-0	2023 - Memphis, 2-1
Miami (Fla.)	1-1	2002 - Miami, 1-0	2007 - LSU, 4-1
Minnesota	1-1	2013 - Minnesota, 2-1	2015 - LSU, 1-0
Mississippi State	22-3-3	1995 - LSU, 2-0	2023 - LSU, 2-1
Mississippi Valley State	1-0-0	2017 - LSU, 5-0	2017 - LSU, 5-0
Missouri	7-2-1	2012 - LSU, 3-1	2022 - LSU, 2-1
Navy	1-1	2006 - Navy, 2-0	2019 - LSU, 1-0 (2OT)
New Mexico	0-0-1	1998 - Draw, 2-2	1998 - Draw, 2-2
Nicholls	6-1	1999 - LSU, 6-0	2014 - LSU, 3-0
North Carolina	0-2	2009 - UNC, 1-0	2019 - UNC, 1-0
North Carolina State	0-3	1997 - NC State, 2-0	2012 - NC State, 2-1
North Texas	0-2	1995 - North Texas, 4-2	1998 - North Texas, 3-0
Northwestern	1-0	2008 - LSU, 2-0	2008 - LSU, 2-0
Northwestern State	5-0-1	1998 - LSU, 2-0	2023 - LSU, 2-1
Ohio State	0-1	2004 - Ohio State, 4-0	2004 - Ohio State, 4-0
Oklahoma	5-0-1	1996 - LSU, 2-0	2012 - LSU, 1-0 (2OT)
Oklahoma State	0-2	1999 - OK State, 3-1	2000 - OK State, 2-0
Ole Miss	13-14-5	1995 - LSU, 2-0	2023 - Ole Miss, 1-0
Oregon	2-1	2005 - Oregon, 2-0	2015 - LSU, 5-0
Oregon State	0-1	2005 - OSU, 2-1 (OT)	2005 - OSU, 2-1 (OT)
Pepperdine	0-0-3	2011 - Draw, 1-1	2023 - Draw, 2-2
Princeton	1-0	2022 - LSU, 2-0	2022 - LSU, 2-0
Rice	1-2-1	2011 - Rice, 1-0 (2OT)	2014 - Rice, 1-0
Rutgers	0-1	2022 - Rutgers, 3-2	2022 - Rutgers, 3-2
Sam Houston State	2-0	2006 - LSU, 6-0	2021 - LSU, 8-0
Samford	2-0-1	2007 - LSU, 1-0 (2OT)	2019 - Draw, 2-2
San Diego	1-1	1999 - San Diego, 7-0	2022 - LSU, 4-1
Saint Mary's	0-1	1997 - St. Mary's, 3-0	1997 - St. Mary's, 3-0
San Francisco	0-1	1997 - SF, 3-1	1997 - SF, 3-1
South Alabama	7-5	1995 - S. Ala., 2-1 (OT)	2020 - LSU, 2-1
South Carolina	5-12-6	1995 - LSU, 1-0	2023 - South Carolina, 1-0
South Florida	2-1	2009 - LSU, 2-1	2023 - USF, 1-0
Southeastern La.	6-1	1995 - LSU, 5-0	2021 - LSU, 2-0
Southern	4-0	2003 - LSU, 9-0	2023 - LSU, 5-0
Southern California	1-1	2013 - LSU, 1-0	2018 - USC, 2-0
Southern Methodist	0-3	1997 - SMU, 7-0	2006 - SMU, 2-0
Southern Miss	7-0	2006 - LSU, 2-1	2023 - LSU, 4-1
Stephen F. Austin	6-1-1	1995 - LSU, 6-0	2022 - LSU, 5-0
Stetson	2-0	2000 - LSU, 2-0	2018 - LSU, 2-0
Tennessee	5-14-5	1996 - Tennessee, 4-2	2023 - LSU, 1-0
Texas	1-3-1	2001 - Texas, 4-0	2023 - LSU, 3-1
Texas A&M	0-12-3	2009 - Draw, 1-1	2023 - Draw, 0-0
Texas A&M - Commerce	1-0	2023 - LSU, 6-0	2023 - LSU, 6-0
Texas Christian	1-2-1	1998 - LSU, 3-0	2014 - TCU, 2-0
Texas State	1-0	2018 - LSU, 2-0	2018 - LSU, 2-0
Texas Tech	3-1	1995 - Texas Tech, 2-1	2020 - LSU, 1-0
Troy	3-0	2000 - LSU, 4-0	2014 - LSU, 2-0
Tulane	3-3-1	1996 - LSU, 6-2	2004 - LSU, 2-1 (OT)
Vanderbilt	8-13-3	1995 - Vanderbilt, 6-0	2022 - LSU, 2-1
Villanova	0-3	2006 - Nova, 1-0 (2OT)	2019 - Nova, 1-0
Virginia Tech	0-2	2010 - VT, 1-0	2016 - VT, 1-0
Wake Forest	0-2	1998 - Wake Forest, 5-0	2010 - Wake Forest, 3-1
Washington	0-1	2008 - Wash., 3-2 (OT)	2008 - Wash., 3-2 (OT)
Western Kentucky	2-0	2015 - LSU, 4-1	2016 - LSU, 1-0
Wisconsin	0-1	2023 - Wisconsin, 3-0	2023 - Wisconsin, 3-0
Wyoming	1-0	2004 - LSU, 1-0	2004 - LSU, 1-0

Tigers In The Pro's

The LSU Tigers have had 11 former players play professionally across the globe, nine of which played under current-head coach Sian Hudson during her time at LSU. Seven are currently still playing while the others have represented LSU at the next level throughout the years.



SHANNON COOKE - DEFENDER*

West Ham United Women

Time at LSU: 2018-2022



LUCY PARKER - DEFENDER*

Aston Villa Women

Time at LSU: 2017-2018

Previous Clubs: West Ham (2021-2023)



TINAYA ALEXANDER - FORWARD

London City Lionesses

Time at LSU: 2017-2021

Previous Clubs: Reading FC (2023), Montpellier (2022-23),
Washington Spirit (2022)



BRENNA MCPARTLAN - DEFENDER*

Burnley

Time at LSU: 2021-2022



LINDSI JENNINGS - DEFENDER

Houston Dash

Time at LSU: 2021-2022



ALLYSHA CHAPMAN - DEFENDER

Houston Dash

Time at LSU: 2009-2011

Previous Clubs: North Carolina Courage (2018), Boston Breakers
(2017), Houston Dash (2015-16), Eskilstuna United DFF (2014), IK
Sirius FK (2012-13)

International: Canadian National Team



ATHENA KUEHN - MIDFIELDER*

Sporting Club de Huelva

Time at LSU: 2021

Previous Clubs: SC Huelva (2022-23), FC Gintra (2022)



ALESIA GARCIA - FORWARD

FTC NÖI LABDARÚGÁS

Time at LSU: 2021-2022



MAYA GORDON - DEFENDER*

DALLAS TRINITY FC

Time at LSU: 2019-2023



RAMMIE NOEL - FORWARD*

GLASGOW CITY FC

Time at LSU: 2019-2023



WASILA DIWURA SOALE*

TAMPA BAY SUN FC

Time at LSU: 2019-2023

2024 Season Stats

Game Records

Overall	Conference	Home	Away	Neutral
3 - 1 - 0	0 - 0 - 0	0 - 1 - 0	3 - 0 - 0	0 - 0 - 0

Team statistics

	LS	OPP
SHOT STATISTICS		
Goals-Shot attempts	10-78	6-28
Goals scored per game	2.5	1.5
Shot pct.	.128	.214
Shots on goal-Attempts	38-78	15-28
SOG pct.	.487	.536
Shots/Game	19.5	7
Assists	7	6
GOAL BREAKDOWN		
Total Goals	10	6
Penalty	1	0
Unassisted	-	-
Overtime	0	0
Goals scored average	2.5	1.5
CORNER KICKS	32	10
PENALTY KICKS	1-1	0-0
OFFSIDES	9	7
PENALTIES		
Fouls	40	43
Yellow cards	5	6
Red cards	0	0
ATTENDANCE		
Total	858	954
Dates/Avg Per Date	1/858	3/318
Neutral Site #/Avg	0/0	-

Goals by Periods

Team	1st	2nd	OT1	OT2	TOTAL
LS	6	4	0	0	10
Opponents	2	4	0	0	6

Corners by Periods

Team	1st	2nd	OT1	OT2	TOTAL
LS	20	12	0	0	32
Opponents	5	5	0	0	10

Shots by Periods

Team	1st	2nd	OT1	OT2	TOTAL
LS	43	35	0	0	78
Opponents	11	17	0	0	28

Fouls by Periods

Team	1st	2nd	OT1	OT2	TOTAL
LS	16	24	0	0	40
Opponents	25	18	0	0	43

Saves by Periods

Team	1st	2nd	OT1	OT2	TOTAL
LS	6	4	0	0	10
Opponents	18	10	0	0	28

Offsides by Periods

Team	1st	2nd	OT1	OT2	TOTAL
LS	2	7	0	0	9
Opponents	2	5	0	0	7

Game Records

Overall	Conference	Home	Away	Neutral
3 - 1 - 0	0 - 0 - 0	0 - 1 - 0	3 - 0 - 0	0 - 0 - 0

Team Box Score Extended

No.	Player	GP-GS	G	GPG	A	APG	PTS	PPG	SH	SPG	SH%	SOG	SOG/G	SOG%	YC	RC	GWG	PK-ATT
20	Galligan, Ava	4-2	2	0.50	1	0.25	5	1.25	13	3.25	.154	6	1.50	.462	1	0	2	0-0
10	Hermannsdottir, Ida	4-4	2	0.50	0	0.00	4	1.00	7	1.75	.286	3	0.75	.429	0	0	0	1-1
4	Ferguson, Jazmin	4-4	2	0.50	0	0.00	4	1.00	5	1.25	.400	3	0.75	.600	1	0	0	0-0
12	Cheesman, Sydney	4-4	0	0.00	4	1.00	4	1.00	2	0.50	.000	2	0.50	1.000	0	0	0	0-0
11	Thoreson, Angelina	4-4	1	0.25	0	0.00	2	0.50	8	2.00	.125	4	1.00	.500	0	0	1	0-0
9	Smith, Amy	3-0	1	0.33	0	0.00	2	0.67	5	1.67	.200	2	0.67	.400	0	0	0	0-0
19	Iljkic, Andrea	3-0	1	0.33	0	0.00	2	0.67	4	1.33	.250	2	0.67	.500	0	0	0	0-0
18	Major, Kelsey	4-0	1	0.25	0	0.00	2	0.50	2	0.50	.500	1	0.25	.500	0	0	0	0-0
29	Humbyrd, Jaden	4-3	0	0.00	1	0.25	1	0.25	3	0.75	.000	1	0.25	.333	1	0	0	0-0
50	Glover, Sage	4-4	0	0.00	1	0.25	1	0.25	2	0.50	.000	2	0.50	1.000	0	0	0	0-0
71	Baker, Mollie	4-4	0	0.00	0	0.00	0	0.00	13	3.25	.000	5	1.25	.385	1	0	0	0-0
8	Shannon, Danielle	4-4	0	0.00	0	0.00	0	0.00	6	1.50	.000	4	1.00	.667	0	0	0	0-0
22	Amsden, Ava	4-0	0	0.00	0	0.00	0	0.00	4	1.00	.000	2	0.50	.500	0	0	0	0-0
2	Ollivierre, Jocelyn	4-2	0	0.00	0	0.00	0	0.00	1	0.25	.000	0	0.00	.000	0	0	0	0-0
28	Knowles, Brielyn	2-0	0	0.00	0	0.00	0	0.00	1	0.50	.000	1	0.50	1.000	0	0	0	0-0
23	Ceballos, Gabbi	4-0	0	0.00	0	0.00	0	0.00	1	0.25	.000	0	0.00	.000	0	0	0	0-0
24	Gaines, Aurora	4-0	0	0.00	0	0.00	0	0.00	1	0.25	.000	0	0.00	.000	0	0	0	0-0
6	MacDonald, Riley	1-0	0	0.00	0	0.00	0	0.00	0	0.00	.000	0	0.00	.000	0	0	0	0-0
1	Scheving, Au?ur	4-4	0	0.00	0	0.00	0	0.00	0	0.00	.000	0	0.00	.000	0	0	0	0-0
30	Dvorakova, Natalie	2-0	0	0.00	0	0.00	0	0.00	0	0.00	.000	0	0.00	.000	0	0	0	0-0
16	DeLuca, Emerson	2-0	0	0.00	0	0.00	0	0.00	0	0.00	.000	0	0.00	.000	0	0	0	0-0
14	Bruser, Annaleigh	1-0	0	0.00	0	0.00	0	0.00	0	0.00	.000	0	0.00	.000	0	0	0	0-0
17	Swierenga, Caley	4-4	0	0.00	0	0.00	0	0.00	0	0.00	.000	0	0.00	.000	1	0	0	0-0
21	Gillis, Tori	4-1	0	0.00	0	0.00	0	0.00	0	0.00	.000	0	0.00	.000	0	0	0	0-0
Total		4	10	2.50	7	1.75	27	6.75	78	19.50	.128	38	9.50	.487	5	0	-	1-1
Opponents		4	6	1.50	6	1.50	18	4.50	28	7.00	.214	15	3.75	.536	6	0	-	0-0

##	Player	GP-GS	MINUTES	GA	GA AVG	SAVES	SAVES/G	SAVES%	W	L	T	SHO/CBO
1	Scheving, Au?ur	4-4	360:00	6	1.50	10	2.50	.625	3	1	0	2/0
TM	TEAM	-	00:00	0	0.00	0	0.00	.000	0	0	0	0/0
Total		4	360:00	6	1.50	10	2.50	.625	3	1	0	2
Opponents		4	360:00	10	2.50	28	7.00	.737	1	3	0	0

Goals by Periods

Team	1st	2nd	OT1	OT2	TOTAL
LS	6	4	0	0	10
Opponents	2	4	0	0	6

Corners by Periods

Team	1st	2nd	OT1	OT2	TOTAL
LS	20	12	0	0	32
Opponents	5	5	0	0	10

Shots by Periods

Team	1st	2nd	OT1	OT2	TOTAL
LS	43	35	0	0	78
Opponents	11	17	0	0	28

Fouls by Periods

Team	1st	2nd	OT1	OT2	TOTAL
LS	16	24	0	0	40
Opponents	25	18	0	0	43

Saves by Periods

Team	1st	2nd	OT1	OT2	TOTAL
LS	6	2	0	0	8
Opponents	14	8	0	0	22

Attendance Summary

	LS	Opponents
Total	858	531
Dates/Avg Per Date	1 / 858	2 / 266
Neutral Site #/Avg	0 / 0	



2024-25 LSU Women's Soccer
Combined Statistics
All games

Page 1/1
as of Sep 02, 2024

Date	Opponent		Score	Att.
08/15/2024	at South Alabama	W	3-0	250
08/25/2024	Arizona St.	L	2-5	858
08/29/2024	at UMass Lowell	W	3-0	281
09/01/2024	at Old Dominion	W	2-1	423

Team statistics

	LS	OPP
SHOT STATISTICS		
Goals-Shot attempts	10-78	6-28
Goals scored per game	2.5	1.5
Shot pct.	.128	.214
Shots on goal-Attempts	38-78	15-28
SOG pct.	.487	.536
Shots/Game	19.5	7
Assists	7	6
GOAL BREAKDOWN		
Total Goals	10	6
Penalty	1	0
Unassisted	-	-
Overtime	0	0
Goals scored average	2.5	1.5
CORNER KICKS	32	10
PENALTY KICKS	1-1	0-0
OFFSIDES	9	7
PENALTIES		
Fouls	40	43
Yellow cards	5	6
Red cards	0	0
ATTENDANCE		
Total	858	954
Dates/Avg Per Date	1/858	3/318
Neutral Site #/Avg	0/0	-

Record	Overall	Home	Away	Neutral
All Games	3-1-0	0-1-0	3-0-0	0-0-0
Conference	0-0-0	0-0-0	0-0-0	0-0-0
Non-Conference	3-1-0	0-1-0	3-0-0	0-0-0

#	Player	GP	G	A	PTS	SH	SH%	SOG	SOG%	GWG	PK-ATT
20	Galligan, Ava	4	2	1	5	13	.154	6	.462	2	0-0
10	Hermansdottir, Ida	4	2	0	4	7	.286	3	.429	0	1-1
4	Ferguson, Jazmin	4	2	0	4	5	.400	3	.600	0	0-0
12	Cheesman, Sydney	4	0	4	4	2	.000	2	1.000	0	0-0
11	Thoreson, Angelina	4	1	0	2	8	.125	4	.500	1	0-0
9	Smith, Amy	3	1	0	2	5	.200	2	.400	0	0-0
19	Iljkic, Andrea	3	1	0	2	4	.250	2	.500	0	0-0
18	Major, Kelsey	4	1	0	2	2	.500	1	.500	0	0-0
29	Humbyrd, Jaden	4	0	1	1	3	.000	1	.333	0	0-0
50	Glover, Sage	4	0	1	1	2	.000	2	1.000	0	0-0
71	Baker, Mollie	4	0	0	0	13	.000	5	.385	0	0-0
8	Shannon, Danielle	4	0	0	0	6	.000	4	.667	0	0-0
22	Amsden, Ava	4	0	0	0	4	.000	2	.500	0	0-0
2	Ollivierre, Jocelyn	4	0	0	0	1	.000	0	.000	0	0-0
28	Knowles, Brielyn	2	0	0	0	1	.000	1	1.000	0	0-0
23	Ceballos, Gabbi	4	0	0	0	1	.000	0	.000	0	0-0
24	Gaines, Aurora	4	0	0	0	1	.000	0	.000	0	0-0
6	MacDonald, Riley	1	0	0	0	0	.000	0	.000	0	0-0
1	Scheving, Au?ur	4	0	0	0	0	.000	0	.000	0	0-0
30	Dvorakova, Natalie	2	0	0	0	0	.000	0	.000	0	0-0
16	DeLuca, Emerson	2	0	0	0	0	.000	0	.000	0	0-0
14	Bruser, Annaleigh	1	0	0	0	0	.000	0	.000	0	0-0
17	Swierenga, Caley	4	0	0	0	0	.000	0	.000	0	0-0
21	Gillis, Tori	4	0	0	0	0	.000	0	.000	0	0-0
Total		4	10	7	27	78	.128	38	.487	-	1-1
Opponents		4	6	6	18	28	.214	15	.536	-	0-0

#	Goalie	GP	MIN.	GA	GA AVG	SAVES	PCT	W-L-T	SHO/CBO
1	Scheving, Au?ur	4	360:00	6	1.50	10	.625	3-1-0	2/0
TM	TEAM	-	00:00	0	0.00	0	.000	0-0-0	0/0
Total		4	360:00	6	1.50	10	.625	3-1-0	2
Opponents		4	360:00	10	2.50	28	.737	1-3-0	0

Goals by Periods

Team	1st	2nd	OT1	OT2	TOTAL
LS	6	4	0	0	10
Opponents	2	4	0	0	6

Shots by Periods

Team	1st	2nd	OT1	OT2	TOTAL
LS	43	35	0	0	78
Opponents	11	17	0	0	28

Saves by Periods

Team	1st	2nd	OT1	OT2	TOTAL
LS	6	4	0	0	10
Opponents	18	10	0	0	28

Corners by Periods

Team	1st	2nd	OT1	OT2	TOTAL
LS	20	12	0	0	32
Opponents	5	5	0	0	10

Fouls by Periods

Team	1st	2nd	OT1	OT2	TOTAL
LS	16	24	0	0	40
Opponents	25	18	0	0	43



2024-25 LSU Women's Soccer
Overall/Conference Statistics
All games

Page 1/2
as of Sep 02, 2024

Game Records

Overall	Conference	Home	Away	Neutral
3 - 1 - 0	0 - 0 - 0	0 - 1 - 0	3 - 0 - 0	0 - 0 - 0

Overall

##	Player	GP-GS	G	A	PTS	SH	SH%	SOG	SOG%	GW	PK
20	Galligan, Ava	4-2	2	1	5	13	.154	6	.462	2	0
10	Hermansdottir, Ida	4-4	2	0	4	7	.286	3	.429	0	1
4	Ferguson, Jazmin	4-4	2	0	4	5	.400	3	.600	0	0
12	Cheesman, Sydney	4-4	0	4	4	2	.000	2	1.000	0	0
11	Thoreson, Angelina	4-4	1	0	2	8	.125	4	.500	1	0
9	Smith, Amy	3-0	1	0	2	5	.200	2	.400	0	0
19	Iljkic, Andrea	3-0	1	0	2	4	.250	2	.500	0	0
18	Major, Kelsey	4-0	1	0	2	2	.500	1	.500	0	0
29	Humbyrd, Jaden	4-3	0	1	1	3	.000	1	.333	0	0
50	Glover, Sage	4-4	0	1	1	2	.000	2	1.000	0	0
71	Baker, Mollie	4-4	0	0	0	13	.000	5	.385	0	0
8	Shannon, Danielle	4-4	0	0	0	6	.000	4	.667	0	0
22	Amsden, Ava	4-0	0	0	0	4	.000	2	.500	0	0
2	Ollivierre, Jocelyn	4-2	0	0	0	1	.000	0	.000	0	0
28	Knowles, Brielyn	2-0	0	0	0	1	.000	1	1.000	0	0
23	Ceballos, Gabbi	4-0	0	0	0	1	.000	0	.000	0	0
24	Gaines, Aurora	4-0	0	0	0	1	.000	0	.000	0	0
6	MacDonald, Riley	1-0	0	0	0	0	.000	0	.000	0	0
1	Scheving, Au?ur	4-4	0	0	0	0	.000	0	.000	0	0
30	Dvorakova, Natalie	2-0	0	0	0	0	.000	0	.000	0	0
16	DeLuca, Emerson	2-0	0	0	0	0	.000	0	.000	0	0
14	Bruser, Annaleigh	1-0	0	0	0	0	.000	0	.000	0	0
17	Swierenga, Caley	4-4	0	0	0	0	.000	0	.000	0	0
21	Gillis, Tori	4-1	0	0	0	0	.000	0	.000	0	0
Total		4	10	7	27	78	.128	38	.487	-	1
Opponents		4	6	6	18	28	.214	15	.536	-	0

Conference

GP-GS	G	A	PTS	SH	SH%	SOG	SOG%	GW	PK
0-0	0	0	0	0	.000	0	.000	0	0
0-0	0	0	0	0	.000	0	.000	0	0
0-0	0	0	0	0	.000	0	.000	0	0
0-0	0	0	0	0	.000	0	.000	0	0
0-0	0	0	0	0	.000	0	.000	0	0
0-0	0	0	0	0	.000	0	.000	0	0
0-0	0	0	0	0	.000	0	.000	0	0
0-0	0	0	0	0	.000	0	.000	0	0
0-0	0	0	0	0	.000	0	.000	0	0
0-0	0	0	0	0	.000	0	.000	0	0
0-0	0	0	0	0	.000	0	.000	0	0
0-0	0	0	0	0	.000	0	.000	0	0
0-0	0	0	0	0	.000	0	.000	0	0
0-0	0	0	0	0	.000	0	.000	0	0
0-0	0	0	0	0	.000	0	.000	0	0
0-0	0	0	0	0	.000	0	.000	0	0
0-0	0	0	0	0	.000	0	.000	0	0
0	0	0	0	0	.000	0	.000	-	0
0	0	0	0	0	.000	0	.000	-	0

##	Player	GP-GS	MIN.	GA	GAAVG	SAVES	PCT	W	L	T	SHO/CBO
1	Scheving, Au?ur	4-4	360:00	6	1.50	10	.625	3	1	0	2/0
TM	TEAM	-	00:00	0	0.00	0	.000	0	0	0	0/0
Total		4	360:00	6	1.50	10	.625	3	1	0	2
Opponents		4	360:00	10	2.50	28	.737	1	3	0	0

GP-GS	MIN.	GA	GAAVG	SAVES	PCT	W	L	T	SHO/CBO
-	00:00	0	0.00	0	.000	0	0	0	0/0
-	00:00	0	0.00	0	.000	0	0	0	0/0
0	00:00	0	0.00	0	.000	0	0	0	0 }}
0	00:00	0	0.00	0	.000	0	0	0	0 }}

Shots by Periods

Team	1st	2nd	OT1	OT2	TOTAL
LS	43	35	0	0	78
Opponents	11	17	0	0	28

Shots by Periods

Team	1st	2nd	OT1	OT2	TOTAL
LS	0	0	0	0	0
Opponents	0	0	0	0	0

Goals by Periods

Team	1st	2nd	OT1	OT2	TOTAL
LS	6	4	0	0	10
Opponents	2	4	0	0	6

Goals by Periods

Team	1st	2nd	OT1	OT2	TOTAL
LS	0	0	0	0	0
Opponents	0	0	0	0	0

Saves by Periods

Team	1st	2nd	OT1	OT2	TOTAL
LS	6	4	0	0	10
Opponents	18	10	0	0	28

Saves by Periods

Team	1st	2nd	OT1	OT2	TOTAL
LS	0	0	0	0	0
Opponents	0	0	0	0	0



2024-25 LSU Women's Soccer
Game Results
All games

Page 1/1
as of Sep 02, 2024

Team Results

Date	Opponent		Score	Overall	Conf	Att.	Goals Scored
08/15/2024	at South Alabama	W	3-0	1-0-0	0-0-0	250	Ferguson, Jazmin Hermansdottir, Ida Galligan, Ava
08/25/2024	Arizona St.	L	2-5	1-1-0	0-0-0	858	Ferguson, Jazmin Hermansdottir, Ida
08/29/2024	at UMass Lowell	W	3-0	2-1-0	0-0-0	281	Thoreson, Angelina Iljkic, Andrea Smith, Amy
09/01/2024	at Old Dominion	W	2-1	3-1-0	0-0-0	423	Major, Kelsey Galligan, Ava

Team Record	W-L-T	Attendance	Dates	Total	Avg.
Overall:	3-1-0	Total:	4	1812	453
Conference:	0-0-0	Home:	1	858	858
Home:	0-1-0	Away:	3	954	318
Away:	3-0-0	Neutral:	0	0	0
Neutral:	0-0-0				
Overtime:	0-0-0				



2024-25 LSU Women's Soccer
Individual Game Highs
All games

Page 1/1
as of Sep 02, 2024

INDIVIDUAL HIGHS

POINTS	3 Ava Galligan at Old Dominion (09/01/2024) 2 Kelsey Major at Old Dominion (09/01/2024) 2 Angelina Thoreson at UMass Lowell (08/29/2024) 2 Andrea Ilijkic at UMass Lowell (08/29/2024) 2 Amy Smith at UMass Lowell (08/29/2024) 2 Jazmin Ferguson vs Arizona St. (08/25/2024) 2 Ida Hermannsdottir vs Arizona St. (08/25/2024) 2 Sydney Cheesman vs Arizona St. (08/25/2024) 2 Jazmin Ferguson at South Alabama (08/15/2024) 2 Ida Hermannsdottir at South Alabama (08/15/2024) 2 Ava Galligan at South Alabama (08/15/2024)
GOALS	1 Kelsey Major at Old Dominion (09/01/2024) 1 Ava Galligan at Old Dominion (09/01/2024) 1 Angelina Thoreson at UMass Lowell (08/29/2024) 1 Andrea Ilijkic at UMass Lowell (08/29/2024) 1 Amy Smith at UMass Lowell (08/29/2024) 1 Jazmin Ferguson vs Arizona St. (08/25/2024) 1 Ida Hermannsdottir vs Arizona St. (08/25/2024) 1 Jazmin Ferguson at South Alabama (08/15/2024) 1 Ida Hermannsdottir at South Alabama (08/15/2024) 1 Ava Galligan at South Alabama (08/15/2024)
ASSISTS	2 Sydney Cheesman vs Arizona St. (08/25/2024) 1 Sydney Cheesman at Old Dominion (09/01/2024) 1 Ava Galligan at Old Dominion (09/01/2024) 1 Jaden Humbyrd at UMass Lowell (08/29/2024) 1 Sage Glover at South Alabama (08/15/2024) 1 Sydney Cheesman at South Alabama (08/15/2024)
SHOTS	7 Mollie Baker vs Arizona St. (08/25/2024) 6 Angelina Thoreson at UMass Lowell (08/29/2024) 4 Ava Galligan at Old Dominion (09/01/2024) 4 Ava Galligan at South Alabama (08/15/2024) 3 Ida Hermannsdottir at UMass Lowell (08/29/2024) 3 Ava Galligan at UMass Lowell (08/29/2024) 3 Amy Smith at UMass Lowell (08/29/2024)
SHOTS ON GOAL	3 Ava Galligan at Old Dominion (09/01/2024) 3 Angelina Thoreson at UMass Lowell (08/29/2024) 2 Danielle Shannon at UMass Lowell (08/29/2024) 2 Sydney Cheesman at UMass Lowell (08/29/2024) 2 Mollie Baker vs Arizona St. (08/25/2024) 2 Jazmin Ferguson vs Arizona St. (08/25/2024) 2 Sage Glover vs Arizona St. (08/25/2024) 2 Ava Galligan at South Alabama (08/15/2024)
SAVES	6 Au?ur Scheving at South Alabama (08/15/2024) 2 Au?ur Scheving at Old Dominion (09/01/2024) 2 Au?ur Scheving vs Arizona St. (08/25/2024)



2024-25 LSU Women's Soccer
High/Lows Analysis
All games

Page 1/4
as of Sep 02, 2024

LSU - Game Highs

POINTS	8	at South Alabama (08/15/2024)
	7	at UMass Lowell (08/29/2024)
GOALS	3	at UMass Lowell (08/29/2024)
	3	at South Alabama (08/15/2024)
ASSISTS	2	at Old Dominion (09/01/2024)
	2	vs Arizona St. (08/25/2024)
	2	at South Alabama (08/15/2024)
SHOTS	29	at UMass Lowell (08/29/2024)
	23	vs Arizona St. (08/25/2024)
SHOTS ON GOAL	13	at UMass Lowell (08/29/2024)
	10	vs Arizona St. (08/25/2024)
SAVES	6	at South Alabama (08/15/2024)
	2	at Old Dominion (09/01/2024)
	2	vs Arizona St. (08/25/2024)
CORNER KICKS	13	at UMass Lowell (08/29/2024)
	12	vs Arizona St. (08/25/2024)
FOULS	12	at Old Dominion (09/01/2024)
	10	at South Alabama (08/15/2024)



0 **Katelyn Holt**

Goalkeeper
Freshman
Waterford, Va.
St. Paul VI Catholic HS

PRIOR TO LSU

Goalkeeper hailing from Waterford, Virginia, where she attended St. Paul VI Catholic High School... Played for the Northern Virginia Alliance in the Elite Clubs National League (ECNL)... Was named the VAA Female Athlete of the Year in 2019... Played varsity soccer for four years at St. Paul’s was named the St. Paul’s VI Catholic High School Girls Soccer Rookie of the Year in 2021. Earned ECNL Mid-Atlantic Region All-Conference honors in 2023... Plans to major in business and sports administration at LSU... Described by LSU Coach Sian Hudson as “a very talented goalkeeper whose range is professional level in terms of the attributes she already has as a young player”.



00 **Sophie Kevorkian**

Goalkeeper
Junior
San Diego, Calif.
University of San Diego/La Jolla High School

KEVORKIAN, Sophie

SEASON	TEAM	GP-GS	Min.	G	A	Pts	Shot	Shot%	SOG	SOG%	GW	PK-Att
2022-23	SD	19 - 18	1598:54	0	0	0	0	.000	0	.000	0	0 - 0
2023-24	SD	17 - 16	1438:16	0	0	0	0	.000	0	.000	0	0 - 0
TOTAL FOR LS		0 - 0	00:00	0	0	0	0	.000	0	.000	0	0 - 0
TOTAL		36 - 34	3037:10	0	0	0	0	.000	0	.000	0	0 - 0

SEASON	TEAM	GP-GS	Minutes	GA	GAAvg	Saves	Save%	W	L	T	SHO/CBO
2022-23	SD	19 - 18	1598:54	39	2.2	96	.711	2	11	4	3/0
2023-24	SD	17 - 16	1438:16	43	2.7	97	.693	1	13	2	2/0
TOTAL FOR LS		0 - 0	00:00	0	0	0	.000	0	0	0	/
TOTAL		36 - 34	3037:10	82	2.43	193	.702	3	24	6	5/0

Single Game Highs

Statistic	Value	
Saves	14	at Cal St. Fullerton 09/07/23



1 Audur Scheving

Goalkeeper
Sophomore
Reykjavik, Iceland
Reykjavik University/ Menntaskólinn við Sund

SCHEVING, Auður

SEASON	TEAM	GP-GS	Min.	G	A	Pts	Shot	Shot%	SOG	SOG%	GW	PK-Att
2024-25	LS	4 - 4	360:00	0	0	0	0	.000	0	.000	0	0 - 0
TOTAL		4 - 4	360:00	0	0	0	0	.000	0	.000	0	0 - 0

SEASON	TEAM	GP-GS	Minutes	GA	GAAvg	Saves	Save%	W	L	T	SHO/CBO
2024-25	LS	4 - 4	360:00	6	1.5	10	.625	3	1	0	2/0
TOTAL		4 - 4	360:00	6	1.5	10	.625	3	1	0	2/0

Single Game Highs

Statistic	Value	
Saves	6	at South Alabama 08/15/24



2 Jocelyn Ollivierre

Defender
Junior
Colorado Springs, Colo.
Air Academy HS

OLLIVIERRE, Jocelyn

SEASON	TEAM	GP-GS	Min.	G	A	Pts	Shot	Shot%	SOG	SOG%	GW	PK-Att
2022-23	LS	20 - 6	939:19	0	0	0	2	.000	1	.500	0	0 - 0
2023-24	LS	20 - 18	1419:41	0	1	1	2	.000	1	.500	0	0 - 0
2024-25	LS	4 - 2	185:30	0	0	0	1	.000	0	.000	0	0 - 0
TOTAL		44 - 26	2544:31	0	1	1	5	.000	2	.400	0	0 - 0

Single Game Highs

Statistic	Value	
Points	1	vs Northwestern St. 09/10/23
Assists	1	vs Northwestern St. 09/10/23
Shots	1	5 times



4 Jazmin Ferguson

Defender
Junior
Conyers, Ga.
East Carolina

FERGUSON, Jazmin

SEASON	TEAM	GP-GS	Min.	G	A	Pts	Shot	Shot%	SOG	SOG%	GW	PK-Att
2022-23	ECU	18 - 18	1540:03	1	0	2	8	.125	1	.125	1	0 - 0
2023-24	ECU	19 - 19	1710:00	4	1	9	22	.182	10	.455	1	0 - 0
2024-25	LS	4 - 4	275:38	2	0	4	5	.400	3	.600	0	0 - 0
TOTAL FOR LS		4 - 4	275:38	2	0	4	5	.400	3	.600	0	0 - 0
TOTAL		41 - 41	3525:41	7	1	15	35	.200	14	.400	2	0 - 0

Single Game Highs

Statistic	Value	
Points	2	7 times
Goals	1	7 times
Assists	1	at Western Caro. 09/10/23
Shots	3	at High Point 09/03/23



6 Riley MacDonald

Midfielder
Freshman
Highlands Ranch, Colo.
Mountain Vista HS

PRIOR TO LSU

Midfielder hailing from Highlands Ranch, Colorado, where she attended Mountain Vista High School... competed for the Colorado Rush Girls Academy at the club level... Ranked as a three-star recruit by Top Drawer Soccer... Had a breakout year in 2023 as a senior where collected various accolades such as being named the Mountain Vista Offensive Player Of The Year, the Player of the Club, the Goal of the Year, as well as First Team All-Conference and Second Team All-State honors... Also sets the example in the classroom, as she was part of Student Leadership, National Honor Society, FCCLA and earned Academic All-State First Team honors... LSU Coach Sian Hudson noted MacDonald's excellent "technical ability, passing range and vision that will be a big aerial presence and chip in with her fair share of goals".



8 Danielle Shannon

Midfielder
RS Sophomore
Houston, Texas
Houston Dash Academy

SHANNON, Danielle

SEASON	TEAM	GP-GS	Min.	G	A	Pts	Shot	Shot%	SOG	SOG%	GW	PK-Att
2022-23	LS	5 - 2	199:20	0	0	0	1	.000	0	.000	0	0 - 0
2023-24	LS	20 - 15	1245:01	0	3	3	10	.000	1	.100	0	0 - 0
2024-25	LS	4 - 4	251:23	0	0	0	6	.000	4	.667	0	0 - 0
TOTAL		29 - 21	1695:45	0	3	3	17	.000	5	.294	0	0 - 0

Single Game Highs

Statistic	Value	
Points	1	vs Arkansas 10/19/23, vs Northwestern St. 09/10/23, vs Southern Miss. 08/20/23
Assists	1	vs Arkansas 10/19/23, vs Northwestern St. 09/10/23, vs Southern Miss. 08/20/23
Shots	2	at Ole Miss 09/15/23, vs Arizona St. 08/25/24, at UMass Lowell 08/29/24



9 Amy Smith

Forward

Freshman

Fort Collins, Colo.

Fossil Ridge HS

SMITH, Amy

SEASON	TEAM	GP-GS	Min.	G	A	Pts	Shot	Shot%	SOG	SOG%	GW	PK-Att
2024-25	LS	3 - 0	130:04	1	0	2	5	.200	2	.400	0	0 - 0
TOTAL		3 - 0	130:04	1	0	2	5	.200	2	.400	0	0 - 0

Single Game Highs

Statistic	Value	
Points	2	at UMass Lowell 08/29/24
Goals	1	at UMass Lowell 08/29/24
Shots	3	at UMass Lowell 08/29/24



10 Ida Hermannsdottir

Midfielder

Junior

Reykjavik, Iceland

Valur Reykjavik

HERMANNSDOTTIR, Ida

SEASON	TEAM	GP-GS	Min.	G	A	Pts	Shot	Shot%	SOG	SOG%	GW	PK-Att
2022-23	LS	19 - 16	1254:38	7	2	16	23	.304	16	.696	2	1 - 1
2023-24	LS	20 - 14	1111:55	4	2	10	32	.125	13	.406	1	1 - 1
2024-25	LS	4 - 4	273:24	2	0	4	7	.286	3	.429	0	1 - 1
TOTAL		43 - 34	2639:58	13	4	30	62	.210	32	.516	3	3 - 3

Single Game Highs

Statistic	Value	
Points	4	vs Grambling 09/02/22, vs Southern Miss. 08/20/23
Goals	2	vs Grambling 09/02/22, vs Southern Miss. 08/20/23
Assists	1	4 times
Shots	5	vs Tex. A&M-Commerce 09/03/23



11 Angelina Thoreson

Forward

Junior

Uppsala, Sweden

IK Uppsala

THORESON, Angelina

SEASON	TEAM	GP-GS	Min.	G	A	Pts	Shot	Shot%	SOG	SOG%	GW	PK-Att
2022-23	LS	21 - 17	1240:15	1	9	11	29	.034	13	.448	1	0 - 0
2024-25	LS	4 - 4	253:27	1	0	2	8	.125	4	.500	1	0 - 0
TOTAL		25 - 21	1493:42	2	9	13	37	.054	17	.459	2	0 - 0

Single Game Highs

Statistic	Value	
Points	2	at Princeton 09/08/22, at UMass Lowell 08/29/24
Goals	1	at Princeton 09/08/22, at UMass Lowell 08/29/24
Assists	1	9 times
Shots	6	at UMass Lowell 08/29/24



12 Sydney Cheesman

Defender

Junior

Lafayette, Colo.

North Carolina/Centaurus High School

CHEESMAN, Sydney

SEASON	TEAM	GP-GS	Min.	G	A	Pts	Shot	Shot%	SOG	SOG%	GW	PK-Att
2022-23	UNC	4 - 0	111:21	0	0	0	0	.000	0	.000	0	0 - 0
2023-24	UNC	4 - 0	28:54	0	0	0	1	.000	0	.000	0	0 - 0
2024-25	LS	4 - 4	338:57	0	4	4	2	.000	2	1.000	0	0 - 0
TOTAL FOR LS		4 - 4	338:57	0	4	4	2	.000	2	1.000	0	0 - 0
TOTAL		12 - 4	479:12	0	4	4	3	.000	2	.667	0	0 - 0

Single Game Highs

Statistic	Value	
Points	2	vs Arizona St. 08/25/24
Assists	2	vs Arizona St. 08/25/24
Shots	2	at UMass Lowell 08/29/24



14 Annaleigh Bruser

Defender

Freshman

Baton Rouge, La.

IMG Academy

BRUSER, Annaleigh

SEASON	TEAM	GP-GS	Min.	G	A	Pts	Shot	Shot%	SOG	SOG%	GW	PK-Att
2024-25	LS	1 - 0	32:13	0	0	0	0	.000	0	.000	0	0 - 0
TOTAL		1 - 0	32:13	0	0	0	0	.000	0	.000	0	0 - 0



16 Emerson DeLuca

Defender

Freshman

Westminster, Colo.

Broomfield High School

DELUCA, Emerson

SEASON	TEAM	GP-GS	Min.	G	A	Pts	Shot	Shot%	SOG	SOG%	GW	PK-Att
2024-25	LS	2 - 0	31:16	0	0	0	0	.000	0	.000	0	0 - 0
TOTAL		2 - 0	31:16	0	0	0	0	.000	0	.000	0	0 - 0



17 Caley Swierenga

Defender
Sophomore
Denver, Colo.
Columbine High School

SWIERENGA, Caley

SEASON	TEAM	GP-GS	Min.	G	A	Pts	Shot	Shot%	SOG	SOG%	GW	PK-Att
2023-24	LS	17 - 10	1003:05	0	2	2	5	.000	3	.600	0	0 - 0
2024-25	LS	4 - 4	310:00	0	0	0	0	.000	0	.000	0	0 - 0
TOTAL		21 - 14	1313:05	0	2	2	5	.000	3	.600	0	0 - 0

Single Game Highs

Statistic	Value	
Points	2	vs Tex. A&M-Commerce 09/03/23
Assists	2	vs Tex. A&M-Commerce 09/03/23
Shots	1	5 times



18 Kelsey Major

Midfielder
Redshirt Sophomore
New Orleans, La.
St. Mary's Dominican HS

MAJOR, Kelsey

SEASON	TEAM	GP-GS	Min.	G	A	Pts	Shot	Shot%	SOG	SOG%	GW	PK-Att
2023-24	LS	20 - 1	607:17	2	2	6	16	.125	6	.375	0	0 - 0
2024-25	LS	4 - 0	112:27	1	0	2	2	.500	1	.500	0	0 - 0
TOTAL		24 - 1	719:44	3	2	8	18	.167	7	.389	0	0 - 0

Single Game Highs

Statistic	Value	
Points	4	vs Tex. A&M-Commerce 09/03/23
Goals	2	vs Tex. A&M-Commerce 09/03/23
Assists	1	vs Southern Miss. 08/20/23, vs Mississippi St. 09/24/23
Shots	4	vs Tex. A&M-Commerce 09/03/23



19 Andrea Ilijkic

Forward
Sophomore
Littleton, Colo.
Columbine High School

ILJKIC, Andrea

SEASON	TEAM	GP-GS	Min.	G	A	Pts	Shot	Shot%	SOG	SOG%	GW	PK-Att
2024-25	LS	3 - 0	72:23	1	0	2	4	.250	2	.500	0	0 - 0
TOTAL		3 - 0	72:23	1	0	2	4	.250	2	.500	0	0 - 0

Single Game Highs

Statistic	Value	
Points	2	at UMass Lowell 08/29/24
Goals	1	at UMass Lowell 08/29/24
Shots	2	at South Alabama 08/15/24



20 Ava Galligan

Forward/Midfielder

Sophomore

Ashburn, Va.

Independence High School

GALLIGAN, Ava

SEASON	TEAM	GP-GS	Min.	G	A	Pts	Shot	Shot%	SOG	SOG%	GW	PK-Att
2023-24	LS	20 - 17	1324:23	4	5	13	39	.103	13	.333	1	0 - 0
2024-25	LS	4 - 2	203:11	2	1	5	13	.154	6	.462	2	0 - 0
TOTAL		24 - 19	1527:34	6	6	18	52	.115	19	.365	3	0 - 0

Single Game Highs

Statistic	Value	
Points	3	vs Pepperdine 09/07/23, at Old Dominion 09/01/24
Goals	1	6 times
Assists	1	6 times
Shots	6	vs Tennessee 10/08/23, vs Arkansas 10/19/23



21 Tori Gillis

Midfielder

Senior

Leesburg, Va.

Loudon County HS

GILLIS, Tori

SEASON	TEAM	GP-GS	Min.	G	A	Pts	Shot	Shot%	SOG	SOG%	GW	PK-Att
2022-23	LS	2 - 0	14:42	0	0	0	0	.000	0	.000	0	0 - 0
2023-24	LS	18 - 11	988:38	0	1	1	5	.000	3	.600	0	0 - 0
2024-25	LS	4 - 1	84:49	0	0	0	0	.000	0	.000	0	0 - 0
TOTAL		24 - 12	1088:09	0	1	1	5	.000	3	.600	0	0 - 0

Single Game Highs

Statistic	Value	
Points	1	vs Pepperdine 09/07/23
Assists	1	vs Pepperdine 09/07/23
Shots	2	vs Arkansas 10/19/23



22 Ava Amsden

Midfielder

Freshman

Colorado Springs, Colo.

Pine Creek High School

AMSDEN, Ava

SEASON	TEAM	GP-GS	Min.	G	A	Pts	Shot	Shot%	SOG	SOG%	GW	PK-Att
2024-25	LS	4 - 0	74:22	0	0	0	4	.000	2	.500	0	0 - 0
TOTAL		4 - 0	74:22	0	0	0	4	.000	2	.500	0	0 - 0

Single Game Highs

Statistic	Value	
Shots	2	vs Arizona St. 08/25/24



23 Gabbi Ceballos

Midfielder

Sophomore

San Antonio, Texas

TCU/John Paul Stevens High School

CEBALLOS, Gabbi

SEASON	TEAM	GP-GS	Min.	G	A	Pts	Shot	Shot%	SOG	SOG%	GW	PK-Att
2023-24	TCU	1 - 0	04:01	0	0	0	0	.000	0	.000	0	0 - 0
2024-25	LS	4 - 0	122:06	0	0	0	1	.000	0	.000	0	0 - 0
TOTAL FOR LS		4 - 0	122:06	0	0	0	1	.000	0	.000	0	0 - 0
TOTAL		5 - 0	126:07	0	0	0	1	.000	0	.000	0	0 - 0

Single Game Highs

Statistic	Value
Shots	1 at Old Dominion 09/01/24



24 Aurora Gaines

Forward

Freshman

Milton, Ga.

Cambridge High School

GAINES, Aurora

SEASON	TEAM	GP-GS	Min.	G	A	Pts	Shot	Shot%	SOG	SOG%	GW	PK-Att
2024-25	LS	4 - 0	67:26	0	0	0	1	.000	0	.000	0	0 - 0
TOTAL		4 - 0	67:26	0	0	0	1	.000	0	.000	0	0 - 0



25 Senai Rogers

Forward

Freshman

Elk Grove, Calif.

Franklin High School

PRIOR TO LSU

Gifted attacker who excels on the left wing hailing from Elk Grove, California... Attended Franklin High School and competed for Blackhawks Soccer Club... Ranked as a three-star recruit by Top Drawer Soccer.. Captained her high school team all five years and earned multiple honors throughout her career, including being named the Delta League Player of the Year, Offensive Player of the Year and First-Team All-League... Earned the Scholar Athlete and Community Service awards in 2022 for her efforts in the classroom and in her community... Plans to major in kinesiology in hopes of becoming a veterinarian when she arrives on campus next fall... Described by LSU Head Coach Sian Hudson as a player with "an 'it' factor" and a player who is "capable of reaching impressive heights in the right program that can stretch her tactically".



26 Sarah Stadler

Midfielder

Freshman

New Berlin, Wisc.

New Berlin Eisenhower HS

PRIOR TO LSU

Dynamic midfielder from New Berlin, Wisconsin, where she attended New Berlin Eisenhower High School... Ranked as a three-star recruit by Top Drawer Soccer... Played her club ball with SC Wave Soccer Club, where she captained the team for four seasons and was the team representative for the Girls Academy since 2021... Appeared on the 2022 Wisconsin International Team that traveled to Spain to play in the Donosti Cup... Was a three-time state champion at New Berlin Eisenhower while also earning All-State Second Team Honors in 2023 and All-Conference First Team honors in 2021, 2022 and 2023... Was the Student Union Senior President, a member of National Honor Society and a part of the Student Athlete Leadership Team during her time at New Berlin... Mentioned the importance of her education here at LSU and plans to pursue a degree in engineering during her time in Baton Rouge... LSU Coach Sian Hudson expressed her excitement about Stadler joining the program, saying that she is "a versatile player who is comfortable in multiple lines of the field and someone we feel confident in the fact that she will add quality no matter where she ends up positionally".



28 Brielyn Knowles

Midfielder

Sophomore

Orlando, Fla.

Windermere Preparatory School

KNOWLES, Brielyn

SEASON	TEAM	GP-GS	Min.	G	A	Pts	Shot	Shot%	SOG	SOG%	GW	PK-Att
2023-24	LS	3 - 0	75:53	0	0	0	0	.000	0	.000	0	0 - 0
2024-25	LS	2 - 0	55:15	0	0	0	1	.000	1	1.000	0	0 - 0
TOTAL		5 - 0	131:08	0	0	0	1	.000	1	1.000	0	0 - 0



29 Jaden Humbyrd

Midfielder

Senior

Issaquah, Washington

Issaquah High School

HUMBYRD, Jaden

SEASON	TEAM	GP-GS	Min.	G	A	Pts	Shot	Shot%	SOG	SOG%	GW	PK-Att
2022-23	LS	14 - 6	464:02	0	0	0	3	.000	1	.333	0	0 - 0
2023-24	LS	17 - 7	730:16	0	0	0	6	.000	2	.333	0	0 - 0
2024-25	LS	4 - 3	227:22	0	1	1	3	.000	1	.333	0	0 - 0
TOTAL		35 - 16	1421:40	0	1	1	12	.000	4	.333	0	0 - 0

Single Game Highs

Statistic	Value	
Points	1	at UMass Lowell 08/29/24
Assists	1	at UMass Lowell 08/29/24
Shots	3	vs Northwestern St. 09/10/23



30 Natalie Dvorakova

Defender

Freshman

Prague, Czechia

C.E. Byrd High School

DVORAKOVA, Natalie

SEASON	TEAM	GP-GS	Min.	G	A	Pts	Shot	Shot%	SOG	SOG%	GW	PK-Att
2024-25	LS	2 - 0	32:39	0	0	0	0	.000	0	.000	0	0 - 0
TOTAL		2 - 0	32:39	0	0	0	0	.000	0	.000	0	0 - 0



32 Alyson Campbell

Goalkeeper

Sophomore

Boulder, Colo.

Fairview HS

PRIOR TO LSU

A native of Boulder, Colorado ... Attended Fairview High School ... Two-time captain of the Fairview soccer team and won the character embodiment award for her leadership on the squad ... Two-time Academic All-State member and was named to the All-Region First Team in 2022 ... Won the Colorado State Cup MVP with FC Boulder in 2019 before joining the Colorado Rapids ECNL club team.



50 Sage Glover

Forward

Junior

New Orleans, La.

North Atlanta HS

GLOVER, Sage

SEASON	TEAM	GP-GS	Min.	G	A	Pts	Shot	Shot%	SOG	SOG%	GW	PK-Att
2022-23	LS	21 - 7	755:06	4	0	8	14	.286	8	.571	0	0 - 0
2023-24	LS	19 - 10	828:10	4	0	8	16	.250	9	.563	3	0 - 0
2024-25	LS	4 - 4	216:53	0	1	1	2	.000	2	1.000	0	0 - 0
TOTAL		44 - 21	1800:09	8	1	17	32	.250	19	.594	3	0 - 0

Single Game Highs

Statistic	Value	
Points	2	8 times
Goals	1	8 times
Assists	1	at South Alabama 08/15/24
Shots	3	vs Florida 09/29/23, vs SFA 08/18/22, vs Mississippi St. 09/24/23



71 Mollie Baker

Forward
Graduate Student
Gilbert, Ariz.
Williams Field HS/North Carolina

BAKER, Mollie

SEASON	TEAM	GP-GS	Min.	G	A	Pts	Shot	Shot%	SOG	SOG%	GW	PK-Att
2020-21	UNC	7 - 0	110:07	0	0	0	9	.000	5	.556	0	0 - 0
2021-22	UNC	7 - 0	99:20	0	1	1	4	.000	2	.500	0	0 - 0
2022-23	LS	21 - 9	1103:31	4	6	14	48	.083	17	.354	1	0 - 0
2023-24	LS	20 - 20	1551:00	3	5	11	61	.049	25	.410	1	0 - 0
2024-25	LS	4 - 4	244:00	0	0	0	13	.000	5	.385	0	0 - 0
TOTAL FOR LS		45 - 33	2898:31	7	11	25	122	.057	47	.385	2	0 - 0
TOTAL		59 - 33	3107:58	7	12	26	135	.052	54	.400	2	0 - 0

Single Game Highs

Statistic	Value	
Points	5	vs Southern Miss. 08/20/23
Goals	2	vs Southern Miss. 08/20/23
Assists	1	12 times
Shots	11	vs Northwestern St. 09/10/23