



**NCAA TOURNAMENT**  
2007 • 2008 • 2009 • 2011 •  
2015 • 2018 • 2021 • 2022 • 2023  
2024

**SEC TOURNAMENT CHAMPIONS**  
2018

**SEC RUNNERS-UP**  
2008 • 2009 • 2011

**SEC WEST CHAMPIONS**  
2007 • 2008 • 2009 • 2011

16

## at Texas A&M

College Station, Texas (Ellis Field)  
7 p.m. CT  
SECN+

### 2024 SCHEDULE

DATE	OPPONENT	LOCATION	RESULT/TIME
<b>AUGUST</b>			
15	South Alabama	Mobile, Ala.	W, 3-0
25	Arizona State	Baton Rouge, La.	L, 2-5
29	UMass Lowell	Lowell, Mass.	W, 3-0
<b>SEPTEMBER</b>			
1	Old Dominion	Norfolk, Va.	W, 2-1
5	Utah	Baton Rouge, La.	T, 1-1
8	UL-Lafayette	Baton Rouge, La.	W, 3-1
12	San Francisco	San Francisco, Calif.	W, 4-1
15	UC Davis	Davis, Calif.	L, 3-4
19	Arkansas*	Fayetteville, Ark.	L, 0-1
22	Ole Miss*	Baton Rouge, La.	W, 1-0
26	Oklahoma*	Baton Rouge, La.	W, 3-1
29	Mississippi St*	Starkville, Miss.	L, 0-2
<b>OCTOBER</b>			
4	Auburn*	Baton Rouge, La.	L, 0-4
10	Kentucky*	Lexington, Ky.	L, 1-2
13	Texas*	Baton Rouge, La.	L, 1-3
18	Texas A&M*	College Station, Texas	7 p.m.
24	Vanderbilt*	Baton Rouge, La.	6 p.m.
27	Missouri*	Columbia, Mo.	3 p.m.
<b>NOVEMBER</b>			
3	SEC Tournament	Pensacola, Fla.	TBA
15	NCAA Tournament	TBA	TBA

\*SEC Match

### On Air

#### TV: SECN+

David Ellis, Play by Play  
Jeff Given  
, Analyst

### Live Stats

Live stats for the competition can be found on LSU Stat Broadcast or on [lsusports.net/sports/sc/schedule](https://lsusports.net/sports/sc/schedule).

### Who To Contact

#### Assistant Communications

#### Director/Soccer Contact

Alyssa Leal  
Email: [aleal3@lsu.edu](mailto:aleal3@lsu.edu)  
Cell: 504-373-7428

### Connect with LSU Soccer

@LSUSoccer

LSUSoccer

@LSUSoccer

### The Matchup



LSU Tigers



Texas A&M

**Record:** 7-7-1, 2-5-0 SEC

**Head Coach:** Sian Hudson

**Career Record:** 96-45-20 (8th season)

**LSU Record:** 44-35-16 (5th season)

**Record:** 8-7-0, 3-4-0 SEC

**Head Coach:** G Guerrieri

**Career Record:** 518-183-51

**TAMU Record:** 502-171-51 (32nd season)

### Series History

LSU will look for their first program win over Texas A&M this Friday night, owning a record of 0-12-3 with the Aggies. The last time the two teams faced was last year, when they battled to a scoreless draw in Baton Rouge. A&M is 5-0-1 when playing the Tigers in Bryan-College Station. The Tigers battled the Aggies to a draw in their last two matches, including their last visit to Texas in 2022.

### Last Time On The Pitch

The Tigers fell to the Texas Longhorns in their last match by a score of 3-1 inside the LSU Soccer Stadium. LSU had a strong outing against Texas, playing well in possession, but conceded two goals on corner kicks and just couldn't find the edge over the Longhorns.

The Tigers came out strong in the first half, creating multiple scoring opportunities and holding 53% possession compared to the Longhorns 47%. Hermannsdóttir, Glover and Gaines all tested Texas keeper Mia Justus in the first 45.

Texas opened the scoring in the 19th minute of the match when Amalia Villareal found the back of the net to give the Longhorns an early lead. Holly Ward provided the assist on the goal. Just two minutes later, Texas nabbed their second goal via a shot from Jilly Shimkin. Holly Ward once again provided the assist, her second of the afternoon. LSU was unable to cut the Texas lead as the first half ended 2-0 in favor of the Longhorns. The Tigers called Justus to action on four occasions, as she collected four saves in the first half while Scheving only one.

The Longhorns found a breakthrough in the 57th minute when Lexi Missimo ran all the way from midfield to the Tiger box to slot a shot past the reach of Scheving, making the score 3-0. Amalia Villareal provided the assist on that tally. Mollie Baker scored on a great shot in the 63th minute, but the goal was reviewed by the VAR and disallowed due to an offside in the buildup. LSU responded to the call not even 10 minutes later, when the Tigers were awarded a penalty kick in the 72nd minute. Ilkic stepped up to take the penalty, and made no mistake as she lashed a shot into the left corner past the Longhorn goalkeeper to cut their lead and get the Tigers on the board. Ilkic made it 3-1 on the day, recording her fourth career goal, all coming in the 2024 season. While the sophomore converted a big moment for LSU, the squad was unable to find two more goals to equalize the match.

The Tigers finished the match with 16 shots, their most in five matches. Nine of those were on target. The Longhorns took 20 shots, with eight of those being on goal. Only four shots under Texas, it was an even matchup in Baton Rouge with both teams finding solid moments on the attack. Scheving finished the match with four saves for the Tigers, moving her total this year to 47.

### Quote from Sian Hudson

"Getting points on the road is crucial for us tomorrow night. We are at a pivotal point in the season and we can't afford to come away from College Station empty handed," said head coach Sian Hudson. "Our team is focused on building on our last performance. We've had some fantastic matchups with Texas A&M in the past with some really close games, so we're excited to have another opportunity against them tomorrow."

## Quick Facts

### UNIVERSITY

Location	Baton Rouge, La.
Founded	1860
Enrollment	31,414
Nickname	Tigers or Fighting Tigers
Facility	LSU Soccer Stadium (2,197)
All-Time Home Record	150-88-34
Mascot	Mike VII (Live Bengal Tiger)
Colors	Purple and Gold
Conference	Southeastern
Affiliation	NCAA Division I
President & Chancellor	William Tate IV
Faculty Athletics Representative	Dr. Lori Martin

### ATHLETIC DEPARTMENT

Director of Athletics	Scott Woodward
Executive Deputy AD/COO	Kelli Zinn
Executive Deputy AD/Executive Director of External Relations	Verge Ausberry
Chief of Staff	Andrea Tepe
Sr. Associate AD / Facilities Operations & Events	Dan Gaston
Deputy AD / Leadership and Strategy	Lori Williams
Deputy AD / Revenue Generation	Clay Harris
Sr. Associate AD/ Health and Wellness	Shelly Mullenix
Sr. Associate AD/Sr. Woman Administrator	Miriam Segar
Sr. Associate AD for Business Operations/CFO	Matthew Laborde
Executive Associate AD for Compliance	Steve Lautz
Associate AD/Strategic Advancement	Ashleigh Clare Kearney Thigpen
Associate AD/Human Resources	Wendy Nail
Associate AD/Marketing and Broadcast Operations	Dave Haskin
Associate AD/NIL & Strategic Initiatives	Taylor Jacobs
Associate AD/Operations & Facility Services	Mark Lee
Assistant AD/Operations (Event Management)	Julie Cribbs
Assistant AD/Sport Psychology and Counseling	Dr. Lakeitha Poole
Associate AD/Director of Sports Medicine	Micki Collins

### SOCCER STAFF

Head Coach	Sian Hudson (Fifth Season)
Alma Mater	Cardiff Metropolitan (2002)
Career Record(s)	96-45-20
at University of Colorado at Colorado Springs (2017-2019)	52-10-4
at LSU (Present)	44-35-16
Associate Head Coach	Seb Furness (Fifth Season)
Alma Mater	West Texas A&M (2012)
Assistant Coach	Antony Blackburn (First Season)
Alma Mater	St. Scholastica (2014)
Assistant Coach	Conor Cable (First Season)
Alma Mater	William Woods University (2018)
Director of Operations	Samantha Etherington
Strength & Conditioning	Dustin Ducree
Athletic Trainer	Hannah Faldetta

### TEAM INFORMATION

2023 Record	8-8-4
2023 SEC Record	3-5-2
Letterwinners Returning/Lost	14/14
Starters Returning/Lost	8/4
Newcomers	15
Inaugural Season	1995
Overall Record	262-241-75

### ATHLETIC COMMUNICATIONS

Associate AD/Communications (FB)	Michael Bonnette
Sr. Associate Communications Director (BSB)	Bill Franques
Sr. Associate Communications Director (MBB, WG)	Kent Lowe
Assistant Communications Director (SOC, Gymnastics)	Alyssa Leal
Assistant Communications Director (WB, BVB)	Grant Kauvar
Assistant Communications Director (SB, VB)	Keonte' Herrera
Assistant Communications Director (TF, XC)	Braydin Sik

### CREATIVE/DIGITAL MEDIA AND BRANDING

Sr. Associate AD/External Affairs /Chief Communications Officer	Zach Greenwell
Executive Director of Creative Design and Photography	Jason Feirman
Photography Director	Chris Parent
Executive Director of Social Media and Branding	Brandon Berrio
Assistant Director of Social Media & Branding	Ashleigh Maerke
Assistant Director of Strategic Initiatives	Harrison Valentine
Assistant Director of Post-Production	Hannah Erickson
Director of Creative Content	Sheldon Lee
Director of Creative Content	Emily Dean

### MEDIA CONTACT INFORMATION

Athletic Communications	(225) 578-8226
Alyssa Leal's Mobile	(504) 373-7428
Alyssa Leal's E-Mail	aleal3@lsu.edu
Website	LSUsports.net

### SOCCER CONTACT INFORMATION

Director of Operations	Samantha Etherington
Sam Etherington's Mobile	(318)-730-4934
Sam Etherington's E-Mail	setherington@lsu.edu
Soccer Office	(225) 578-3947

### 2024 LSU SOCCER SCHEDULE

#### AUGUST

15	South Alabama	Mobile, Ala.	W, 3-0
25	Arizona State	Baton Rouge, La.	L, 5-2
29	UMass Lowell	Lowell, Mass.	W, 3-0

#### SEPTEMBER

1	Old Dominion	Norfolk, Va.	W, 2-1
5	Utah	Baton Rouge, La.	T, 1-1
8	UL-Lafayette	Baton Rouge, La.	W, 3-1
12	San Francisco	San Francisco, Calif.	W, 4-1
15	UC Davis	Davis, Calif.	L, 3-4
19	Arkansas*	Fayetteville, Ark.	L, 0-1
22	Ole Miss*	Baton Rouge, La.	W, 1-0
26	Oklahoma*	Baton Rouge, La.	W, 3-1
29	Mississippi St*	Starkville, Miss.	L, 0-2

#### OCTOBER

4	Auburn*	Baton Rouge, La.	L, 0-4
10	Kentucky*	Lexington, Ky.	L, 1-2
13	Texas*	Baton Rouge, La.	L, 1-3
18	Texas A&M*	College Station, Texas	7 p.m.
24	Vanderbilt*	Baton Rouge, La.	6 p.m.
27	Missouri*	Columbia, Mo.	3 p.m.

#### NOVEMBER

3	SEC Tournament	Pensacola, Fla.	TBA
15	NCAA Tournament	TBA	TBA

\*SEC Match

### MEDIA INFORMATION

The 2024 LSU Soccer Record Book was written to provide members of the media with statistics and information needed to adequately cover the LSU Soccer team. For further information on the team and the scheduling of interviews with head coach Sian Hudson, associate head coach Seb Furness, assistant coaches Tiffany Hansen and Trey Thompson or LSU student-athletes, please contact Alyssa Leal in the LSU Athletic Communications Department at (504)-373-7428.

#### MAILING ADDRESS

LSU Athletic Communications  
LSU Box 25095  
Baton Rouge, LA 70803

#### OVERNIGHT MAILING ADDRESS

Athletic Administration Building, Fifth Floor  
North Stadium Drive  
Baton Rouge, LA 70894

### CREDENTIALS

Media credentials should be requested prior to each game. Season credentials are also available upon request. Passes will be available for pick up in the press box at the LSU Soccer Stadium. All requests should be made by contacting Alyssa Leal via phone or email.

### INTERVIEWS

Postgame interviews, including those with players and coaches from both teams, will be held on the field approximately five minutes following the completion of each match. Alyssa Leal will take interview requests during the second half of each match and coordinate with the requested coach or student-athlete for postgame interviews. Game information, including halftime and final game statistics, will be provided in the press box.

Practices are also open to the media with Sian Hudson and the players available for interviews after each session. Contact Alyssa Leal to make arrangements to cover a practice.



### LSU SOCCER ON THE SEC NETWORK

The Southeastern Conference and ESPN have a 20-year agreement through 2034 to create a multi-platform SEC Network which launched in August 2014. The SEC Network and its accompanying digital platform airs SEC content 24/7, including more than 1,000 events annually.

### CREDITS

Editor	Alyssa Leal
Design and Layout	Alyssa Leal, Jason Feirman
Cover Design	Perry Spitzer
Photography	Chris Parent, Gus Stark, Beau Brune

## Notebook

### 2024 SEC Watchlist



**Mollie Baker / F / Grad.**



**Jazmin Ferguson / D / Jr.**



**Ida Hermannsdottir / M / Jr.**



**Sydney Cheesman / D / Jr.**



**Ava Galligan / F / So.**

### 2024 SEC Watchlist Cont.

Five Tigers on the LSU Soccer squad were named to the 2024 SEC Soccer Preseason Watchlist. A total of 88 student-athletes were named to this year's watchlist, as Mollie Baker, Jazmin Ferguson, Ida Hermannsdottir, Ava Galligan and Sydney Cheesman are the Tigers to keep an eye on this year.

Baker, Hermannsdottir and Galligan all return to LSU this year, while Ferguson and Cheesman transferred to the team this spring and enter their first season in the Purple and Gold.

A captain and leader on this year's LSU squad, Baker enters her final season with the Tigers in 2024. The Gilbert, Arizona native was the only player to appear and start in all 20 matches for the Tigers last year. The forward tallied three goals, five assists, and 1,551 minutes on the pitch while earning United Soccer Coaches All-Southeast Region Third Team honors in 2023.

A native of Reykjavic, Iceland, Hermannsdottir continues to be one of the top midfielders to watch in the nation. She enters year three at LSU with 11 goals, four assists and 2,366 minutes in her career.

Galligan, a dual forward/midfielder out of Ashburn, Virginia, enters her second year with the Tigers after a breakout debut season in 2023. She recorded four goals, five assists and played in all 20 matches in her freshman season.

Ferguson joined the squad from East Carolina University, where she spent two seasons and was the 2023 American Athletic Conference Co-Defensive Player of the Year. A native of Conyers, Georgia, she will serve as a vice captain on the squad as she enters her junior season this upcoming fall. United Soccer Coaches named her a defender to watch in 2024.

Cheesman is a defender out of Lafayette, Colorado, who transferred to LSU from the University of North Carolina, where she tallied 175 minutes on the pitch in her nine games played and helped lead the Tar Heels to two NCAA Tournament appearances. The defender was rated four stars by Top Drawer Soccer in the recruiting rankings in 2022 prior to starting her collegiate career at UNC.

### The Captains

LSU is captained by the veteran duo of Mollie Baker and Jaden Humbyrd this year. Transfer Jazmin Ferguson will also serve as a Vice Captain alongside the two.

A native of Gilbert, Arizona, Baker returns for her fifth and final season at LSU this fall. She is a key force for the Tigers on and off the pitch. Last year, she was the only player to appear and start in all 20 matches for the Tigers. In 2023, she scored three goals and recorded five assists on the year. Her five assists rank her inside the top 10 in the SEC. With a career-high 1,551 minutes on the year, she earned 2023 United Soccer Coaches All-Southeast Region Third Team honors.

Humbyrd is a native of Issaquah, Washington, and is a huge piece of the midfield for the Tigers. She returns both experience and leadership. She appeared in 17 matches last year, earning the start in seven of those. She recorded two shots on goal for the year and helped lead her team to their third consecutive NCAA postseason appearance.

Ferguson joined the squad from ECU, where she was one of the best defenders in program history. A native of Conyers, Georgia, the junior adds depth to the Tigers backline. She has already tallied her first goal in her first start in the Purple and Gold in the squad's season opener last Thursday. She will continue to be an experience player for the Tigers defensive unit throughout the year.

### A Roster Near and Far

The 2024 roster features 29 athletes, 15 of which are newcomers to the squad.

Four countries are represented in the squad (United States, Iceland, Sweden and Prague). Goal keeper Audur Scheving is a native of Reykjavic, Iceland, the same hometown of key returner Ida Hermannsdottir. Freshman Natalie Dvorakova grew up in Czechia while Angelina Thoreson is a proud Swede.

Of the remaining 26 athletes, nine are native to Colorado. The remaining states that are represented among this year's squad are Louisiana (3), Virginia (3), California (2), Georgia (2), Texas (2), Arizona, Florida, Nebraska, and Washington.

### The 2024 Schedule

LSU officially kicked off the new season against South Alabama on Thursday, August 15 in Mobile before opening at home this Sunday. The Tigers schedule this year features eight matches inside the LSU Soccer Stadium.

After Arizona State, the squad will also welcome Utah, UL-Lafayette, Ole Miss, Oklahoma, Auburn and Texas to Baton Rouge before concluding home play against Vanderbilt on Thursday, October 24.

LSU will travel to face University of Massachusetts Lowell, Old Dominion, San Francisco, University of California Davis, Arkansas, Mississippi State, Kentucky, Texas A&M and will close out the regular season at Missouri on Sunday, October 27.

The squad will compete against 10 SEC opponents throughout the regular season this year, including the newest league members Texas and Oklahoma.

View the full 2024 LSU Soccer Schedule with match times on [lsusports.net](https://lsusports.net).



## Notebook

### SEC TV Schedule

LSU Soccer will be featured on SEC Network twice throughout the regular season as the league revealed the 2024 soccer television slate on Thursday.

The Tigers matches against Vanderbilt on Thursday, October 24 and Missouri on Sunday, October 27 will air nationally at 6 p.m. CT and 3 p.m. CT, respectively.

The remaining matches on the 2024 LSU Soccer schedule will be available via streaming on SEC Network+ and ESPN+.

This year's SEC Network's soccer schedule features 26 matches, beginning with Iowa at Texas on Sunday, Aug. 25 at 1 p.m. CT.

This season, Thursday evenings will display doubleheader SEC action, with games starting at 6 p.m. and 8 p.m. Sundays will also be action-packed for viewers, with a tripleheader to cap off the regular season on Oct. 27.

The SEC Soccer Tournament will once again air in its entirety on SEC Network, with full coverage details announced at a later date.

### SEC Preseason Coaches Poll

Arkansas was tabbed the favorite to win the 2024 Southeastern Conference women's soccer title in voting by the league's 16 head coaches.

A record seven SEC teams began the season ranked in the United Soccer Coaches preseason rankings: Georgia 14th, Arkansas 16th, Texas 17th, Mississippi State 18th, Alabama 20th, South Carolina 21st, and Texas A&M 25th.

LSU entered the new season at No. 10 in the conference preseason poll as the SEC kicked off their 32nd season of women's soccer.

#### Preseason Coaches' Poll

1. Arkansas
2. Texas
- 3t. Georgia
- 3t. South Carolina
5. Alabama
6. Mississippi State
7. Texas A&M
8. Tennessee
9. Vanderbilt
10. LSU
11. Auburn
12. Kentucky
- 13t. Florida
- 13t. Oklahoma
15. Ole Miss
16. Missouri

### The 2024 Roster

This year's team is a mix of youth and experience. The roster is made up of 29 players, with one graduate student, two seniors, seven juniors, nine sophomores and 10 freshmen.

Mollie Baker and Jaden Humbyrd will lead the squad as captains this year, while ECU transfer Jazmin Ferguson will serve as the vice captain.

LSU has welcomed four new transfers for this upcoming season in Ferguson, Cheesman, Sophine Kevorkian (USD) and Gabbi Ceballos (TCU).

The veteran seniors include Baker, Humbyrd and Tori Gillis, who all enter their final season with the Tigers this year.

Kevorkian, Ferguson, Hermannsdottir, Cheesman, Jocelyn Ollivierre, Angelina Thoreson and Sage Glover make up the junior class. Thoreson returns to the pitch this year after sitting out of the 2023 season due to injury.

The sophomores on the squad are Ceballos, Danielle Shannon, Kelsey Major, Audur Scheving, Caley Swierenga, Andrea Ilijkic, Ava Galligan, Brielyn Knowles and Alyson Campbell.

The freshmen class includes Riley MacDonald, Amy Smith, Annaleigh Bruser, Katelyn Holt, Emerson DeLuca, Ava Amsden, Aurora Gaines, Senai Rogers, Sarah Stadler and Natalie Dvorakova.

The addition of Scheving to the squad brings LSU's total to four internationals on the roster. She is the second player to become a Tiger from Reykjavik, Iceland, along with Hermannsdottir. Other countries represented on the squad are Sweden and Czechia.

### International Tigers

This summer, the program had two Tigers representing LSU on the international stage.

Junior transfer Sophine Kevorkian played on the Armenian National Team this summer. A native of San Diego, California, Kevorkian transferred to LSU in the spring and will play her first season with the Tigers this upcoming fall.

She joins the Tigers from the University of San Diego, where she totaled 3,000 minutes in between the posts, earning 34 starts and playing in a total of 36 matches for the Toreros.

The goalkeeper earned her first national call up to the Armenian team for their UEFA Women's Euro 2025 qualifying round matches against Bulgaria and Romania. Her Armenian descent comes from her grandfather on her father's side, allowing her to represent her family's country.

Sophomore Andrea Ilijkic also got a call up this summer, playing for the Croatian National Team. Nenad Gračan, head coach of the Croatian women's national football team, announced Ilijkic as one of 28 players selected to compete in the country's upcoming European Championship qualifying matches against Wales and Ukraine.

Ilijkic's Croatian descent comes from her father's family.

### Defender To Watch

United Soccer Coaches named LSU Soccer junior, Jazmin Ferguson, a defender to watch in 2024.

The defenders watch list is the second position to be announced by the organization, as United Soccer Coaches will continue on its NCAA Division I Men's and Women's Players to Watch lists with the remaining positions.

The lists are compiled and released by the Division I All-America Committees to promote college soccer.

A native of Conyers, Georgia, Ferguson enters her junior season this upcoming fall and will be a force in the Tiger's backline. She will also serve as the Tigers Vice Captain in 2024.

Ferguson transferred to LSU in the spring after spending her first two seasons at East Carolina University, where she was the 2023 American Athletic Conference Co-Defensive Player of the Year.

In her collegiate debut season, she was named the AAC Freshman of the Year as well as earning Second-Team All-Conference and All-Freshman team nods. By the end of the season, she was rated the No. 56 defender in the nation by Top Drawer Soccer as only a freshman.

Last year, the Georgia native became the first East Carolina player in program history to win two postseason awards and just the third Defensive Player of the Year in team history (first since 2008).

Her playing experience will provide a veteran voice on the pitch for LSU while adding depth to the Tigers defensive unit.

### The LSU Staff

Hudson enters her fifth season with the Tigers this year. Since beginning her tenure at LSU in 2019, she has propelled the program to unprecedented success alongside Associate Head Coach Seb Furness, who joined the coaching staff that same year.

Joining them on staff is Assistant Coaches Antony Blackburn and Conor Cable. Blackburn is a native of Derby, England, who initially joined the Tigers in Fall 2023 as an analyst. He will primarily assist with session planning and delivery, individual development plans, and opposition preparation. Prior to LSU, Blackburn served as Head Coach of Valencia C.F. U14's (Valencia, Spain), one of the most prestigious academies in the world of professional soccer.

Cable joins the Tigers from Lake Erie College, where he spent five years helping lead the storm to new heights. Cable will primarily lead the LSU goalkeeping unit and oversee LSU Soccer community service and outreach events.

The Spalding, England native brings a wealth of experience to Baton Rouge from both his previous work with the Lake Erie goalkeeping unit and his own professional experiences. Cable came through the professional system in England, playing for a variety of Premier League and Championship Clubs including Norwich City and Cardiff City, and spent his youth academy days at Bristol City Football Club.

Under Hudson's leadership, the LSU Tigers achieved significant milestones during the 2023 season, marking their ninth NCAA Tournament appearance and third consecutive postseason showing—the most straight appearances by a coach in LSU history. Notably, Hudson secured her first LSU NCAA Tournament victory with a first-round win against Lamar on November 11, 2022.

This upcoming season, Hudson and her staff will look to earn her fourth consecutive and LSU's 10th overall NCAA appearance. The Tigers also hope to secure the program's 14th ten-win season while in pursuit of an SEC and national championship.

Attendance is another important component for the Tigers, as Hudson and her staff are striving to set new attendance records inside the LSU Soccer Stadium in 2024. Three of the program's top ten largest crowds occurred under Hudson's tenure.

### Tiger Notables

LSU will look to get back in the win column on Friday night in Bryan-College Station. The Tigers are looking for a spark after not having won their four matches. Their last victory was over Oklahoma on September 26.

The Tigers came out hot on the attacking front through non-conference play, having marked wins over South Alabama (3-0), UMass Lowell (W, 3-0), Old Dominion (2-1), UL-Lafayette (3-1), San Francisco (4-1), Ole Miss (1-0) and Oklahoma (3-1) and a draw against Utah (1-1).

LSU has scored 27 goals on the year. Ida Hermannsdottir, Mollie Baker, Jazmin Ferguson, Angelina Thoreson, Ava Galligan, Andrea Ilijkic, Amy Smith, Kelsey Major, Sage Glover, Gabbi Ceballos, Danielle Shannon and Ava Amsden have found themselves on the scoresheet.

On that same note, LSU has seen 12 different goal scorers through the regular season so far, with five players scoring the firsts of their career. Ferguson, Ceballos, Ilijkic, Shannon and Amsden have all scored their first career goals at LSU this season. Hermannsdottir leads the team with seven goals on the year, while Ava Galligan follows with four.

The Tigers have recorded 16 assists across nine different players so far this year, with junior Sydney Cheesman leading the way. The UNC transfer has been pivotal in set pieces for LSU, recording a team high four assists on the year.

Overall, LSU has taken 218 shots on the year, with 102 of those being on target. Galligan and Hermannsdottir share the top spot for the most shots taken with 31 each. Hermannsdottir also leads the SOG category with 18. Baker, Glover, Shannon, Smith, Amsden, Ilijkic, Ceballos and Thoreson have also been pivotal in attacking and have all tallied 10 or more shots on the year.

Audur Scheving, the sophomore from Iceland, has been pivotal in between the posts for the Tigers. She has recorded 47 saves and three shutouts for the Tigers in her first year. Scheving ranks amongst the top-10 players in the conference currently in shutouts (8th) and saves (5th).

LSU currently sits 13th in the overall SEC standings with six points as these final three matches of the regular season are crucial. While Mississippi State and Arkansas share the top spot with 15 points. The Tigers rank in the top-10 in the SEC in goals (27), shots (218) and saves (51).

The Tigers average 1.80 goals per game compared to 1.70 from their opponents, while also averaging about 14.5 shots per game.

Scheving and Shannon are the only two players to start in every match for LSU this year.

### Hermannsdottir's Record

Junior forward and Iceland native Ida Hermannsdottir scored braces in back-to-back games for the Tigers against UL-Lafayette and San Francisco.

Against San Francisco, Ida opened and closed scoring for the Tigers in the 14th and 84th minute, marking the second consecutive game that she's scored two goals.

Before that, Hermannsdottir led the Tigers to victory against UL-Lafayette, recording a brace in the match, the first of the year for the Tigers.

Against the Cajuns, Hermannsdottir scored back-to-back goals in the match, only 13 seconds apart, setting a new school record. The two goals were the fastest pair of goals scored in program history and the fastest by the same player.

The previous record of quickest goals scored was held by two separate pairs of goal scorers: Ashley Mitnick and Rachel Cohen vs. Alabama on 10/13/2000, along with Roslyn Jones and Rachel Yopez vs. Memphis on 9/6/2007. The one player record was previously held by Melissa Clarke, who scored two goals in a span of 38 seconds against Arkansas on October 31st, 2008.

### The Free Kick Specialist

Sophomore Andrea Ilijkic has found the back of the net for the Tigers three out of four times that she has stepped up for a free kick this year.

Ilijkic went three for three on direct free kicks, scoring her third goal of the year and the game winner in the squad's match against Ole Miss.

Her first goal of the year came against UMass Lowell, and then again at UC Davis. Her goal in Lowell was also the first of her career at LSU.

### The Opponent

Texas A&M is 8-7-0 on the year and 3-4-0 in conference, having defeated Ole Miss, Auburn and Missouri.

The Aggies currently share the sixth spot in the SEC standings with Georgia, Kentucky and Vanderbilt, all with nine points. Texas A&M ranks fifth in the conference in shots with 258, fourth in assists with 30, and tenth in saves with 45.

Mississippi State and Arkansas both share the top spot in the conference with 18 points each.

The Aggies have scored 26 goals this year, just one less than the Tigers, while allowing 19 goals scored on them. They have six shutouts through 15 matches, including blank slates by three different keepers.

Sydney Becerra leads Texas A&M in scoring with 14 points on five goals and four assists while Grace Ivey has four goals on the year. Mia Pante also has added eight points on three goals and two assists.

## 2024 Soccer Staff



### Sian Hudson

Head Coach  
5th Year

- Hudson enters her fifth season leading the Tigers. She owns a 38-28-15 record in the Purple & Gold
- Hired as LSU head coach on Dec. 11, 2019
- 90-38-19 record as collegiate head coach
- Led the Tigers to the program's ninth NCAA Tournament appearance in 2023 for third time in her LSU career
- Only LSU coach to record three consecutive NCAA postseason appearances
- Recorded two 10+ winning seasons during her four seasons at LSU
- Led LSU to record of 8-8-3 in debut season; that was an +5 win improvement from the season before her arrival
- Nine Tigers have taken their career to the professional level under Hudson, including two NWSL draft selections
- Led University of Colorado at Colorado Springs to a NCAA Division II No. 1 ranking in 2019
- 2019 Rocky Mountain Athletic Conference Coach of the Year
- Took UCCS to the NCAA Division II Tournament in 2017, 2018, and 2019.
- Led the Colorado Pride (W-League) to Western



### Conor Cable

Assistant Coach  
1st Year

- Cable joins the Tigers from Lake Erie College, where he spent five years helping lead the storm to new heights. Cable will primarily lead the LSU goalkeeping unit and oversee LSU Soccer community service and outreach events
- The Spalding, England native brings a wealth of experience to Baton Rouge. Cable came through the professional system in England, playing for a variety of Premier League and Championship Clubs including Norwich City and Cardiff City, and spent his youth academy days at Bristol City Football Club
- Helped lead the Storm back to the GMAC final and their fourth consecutive NCAA tournament appearance last year.
- During his collegiate career, Cable was a three time First-team All-Conference member and national defensive player of the week at William Woods University in Missouri
- Following Cable's collegiate career, he played for Cleveland SC in the National Premier Soccer League (NPSL) in the summer of 2021. While in a playing position with the team, his role also included working with goalkeepers.



### Seb Furness

Associate Head Coach  
5th Year

- Vital staff member as he was promoted to Associate Head Coach in August 2022 after serving as an assistant coach in his first two years in Baton Rouge
- In Furness' time, the Tigers have reached the postseason in three consecutive years (2021, 2022, 2023)
- Helped LSU register six shutouts and a GAA of 0.95 in his first season in Baton Rouge
- Spent four seasons as goalkeepers coach at Colorado State (2016-19)
- Led sophomore goalkeeper Gabi McDonald (CSU) to the 10th best save percentage (.879) in the NCAA in 2019. McDonald was first keeper in CSU history to earn Mountain West First Team honors and was named to United Soccer Coaches All-Pacific Team
- Helped Colorado State lower goals allowed total of 36 in 2016 to only 15 in 2019. The Rams lowered goals allowed in each of the four seasons he was on staff
- Played the goalkeeper position at West Texas A&M from 2008-11. In 2009, his save percentage of .889 led NCAA DII
- Played professionally for Tindastoll FC in Iceland for a year and half following college



### Dustin Ducree

Strength & Conditioning  
1st Year



### Antony Blackburn

Assistant Coach/Recruiting Coordinator  
2nd Year

- Blackburn, a native of Derby, England, initially joined the Tigers in Fall 2023 as an analyst and will transition to an Assistant Coach position, effectively immediately. He will primarily assist with session planning and delivery, individual development plans, and opposition preparation.
- Served as Head Coach of Valencia C.F. U14's (Valencia, Spain), one of the most prestigious academies in the world of professional soccer. Blackburn led a technical staff and had a successful season both in the league and cup, reaching the final of the Madrid Cup against Atletico Madrid and winning the Crevillent Cup beating Villarreal CF
- Also served as the Assistant Coach of UD Vall D'Uxo, head coach of the U19s at the International Development Academy, and an Academy Coach at Sunderland AFC, a Category 1 Football Academy in the United Kingdom
- Played at the collegiate level as well with the St. Scholastica Saints, in Duluth, Minnesota



### Hannah Faldetta

Athletic Trainer  
11th Year

- Served as LSU soccer's athletic trainer since 2014
- Graduate assistant at West Virginia University and earned her master's degree in Athletic Training
- Attended Purdue University for undergrad and graduated in 2012 with a degree in athletic training
- Studied abroad in China during her time at Purdue at the Beijing Sport University



## 2024 Roster



**Katelyn Holt**  
5-11 • Fr. • GK  
Waterford, Va.  
St. Paul VI Catholic HS



**Sophie Kevorkian**  
5-8 • Jr. • GK  
San Diego, Calif.  
San Diego/ La Jolla HS



**Audur Scheving**  
5-10 • So. • GK  
Reykjavik, Iceland  
Reykjavik University/Menntaskólinn við Sund



**Jocelyn Ollivierre**  
5-7 • Jr. • D  
Colorado Springs, Colo.  
Air Academy HS



**Jazmin Ferguson**  
5-9 • Jr.. • D  
Conyers, Ga.  
Heritage HS



**Riley MacDonald**  
5-8 • Fr. • M  
Highlands Ranch, Colo.  
Mountain Vista HS



**Danielle Shannon**  
5-1 • So. • M  
Houston, Texas  
Houston Dash Academy



**Amy Smith**  
5-11 • Fr. • F  
Fort Collins, Colo.  
Fossil Ridge HS



**Ida Hermannsdottir**  
5-10 • Jr. • M  
Reykjavik, Iceland  
Valur Reykjavik



**Angelina Thoreson**  
5-5 • Jr. • F  
Uppsala, Sweden  
IK Uppsala



**Sydney Cheesman**  
5-6 • Jr. • D  
Lafayette, Colo.  
North Carolina/Centurion HS



**Annaleigh Bruser**  
5-10 • Fr. • D  
Baton Rouge, La.  
IMG Academy



**Emerson Deluca**  
5-4 • Fr. • D  
Westminster, Colo.  
Broomfield HS



**Caley Swierenga**  
5-9 • So. • D  
Denver, Colo.  
Lutheran HS



**Kelsey Major**  
5-5 • So. • M  
New Orleans, La.  
St. Mary's Dominican HS



**Andrea Ilijkic**  
5-7 • So. • F  
Littleton, Colo.  
Columbine HS



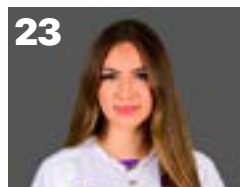
**Ava Galligan**  
6-0 • So. • F/M  
Ashburn, Va.  
Independence HS



**Tori Gillis**  
5-7 • Sr. • M  
Leesburg, Va.  
Loudoun County HS



**Ava Amsden**  
5-6 • Fr. • M  
Colorado Springs, Colo.  
Pine Creek HS



**Gabbi Ceballos**  
5-8 • So. • M  
San Antonio, Texas  
TCU/John Paul Stevens HS



**Aurora Gaines**  
5-8 • Fr. • F  
Milton, Ga.  
Cambridge HS



**Senai Rogers**  
5-7 • Fr. • F  
Elk Grove, Calif.  
Franklin HS



**Sarah Stadler**  
5-9 • Fr. • M  
New Berlin, Wisc.  
New Berlin Eisenhower HS



**Brielyn Knowles**  
5-8 • So. • M  
Orlando, Fla.  
Windermere Prep



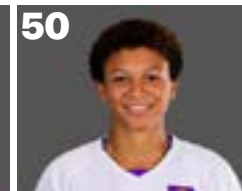
**Jaden Humbyrd**  
5-6 • Sr. • M  
Issaquah, Wash.  
Issaquah HS



**Natalie Dvorakova**  
5-4 • Fr. • D  
Prague, Czechia  
C.E. Byrd HS



**Alyson Campbell**  
5-6 • So. • GK  
Boulder, Colo.  
Fairview HS



**Sage Glover**  
5-2 • Jr. • F  
New Orleans, La.  
North Atlanta HS



**Mollie Baker**  
5-7 • Gr. • F  
Gilbert, Ariz.  
North Carolina/Williams Field HS



**LSU Soccer**  
2024 Roster

No.	Full Name	Position	Height	Class	Hometown	High School
0	Katelyn Holt	Goalkeeper	5-11	Fr.	Waterford, Va.	St. Paul VI Catholic HS
00	Sophine Kevorkian	Goalkeeper	5-8	Jr.	San Diego, Calif.	La Jolla HS
1	Auður Scheving	Goalkeeper	5-10	So.	Reykjavik, Iceland	Menntaskólinn við Sund
2	Jocelyn Ollivierre	Defender	5-7	Jr.	Colorado Springs, Colo.	Air Academy HS
4	Jazmin Ferguson	Defender	5-9	Jr.	Conyers, Ga.	Heritage HS
6	Riley MacDonald	Midfielder	5-8	Fr.	Highlands Ranch, Colo.	Mountain Vista HS
8	Danielle Shannon	Midfielder	5-1	So.	Houston, Texas	Houston Dash Academy
9	Amy Smith	Forward	5-11	Fr.	Fort Collins, Colo.	Fossil Ridge HS
10	Ida Hermannsdottir	Midfielder	5-10	Jr.	Reykjavik, Iceland	Valur Reykjavik
11	Angelina Thoreson	Forward	5-5	Jr.	Uppsala, Sweden	Celsiuskolan
12	Sydney Cheesman.	Defender	5-6	Jr.	Lafayette, Colo.	Centaurus HS
14	Annaleigh Bruser	Defender	5-6	Fr.	Baton Rouge, La.	IMG Academy
16	Emerson DeLuca	Defender	5-4	Fr.	Westminster, Colo.	Broomfield HS
17	Caley Swierenga	Defender	5-9	So.	Denver, Colo.	Lutheran HS
18	Kelsey Major	Midfielder	5-5	RS So.	New Orleans, La.	St. Mary's Dominican HS
19	Andrea Iljkic	Forward	5-7	So.	Littleton, Colo.	Columbine HS
20	Ava Galligan	Forward	6-0	So.	Ashburn, Va.	Independence HS
21	Tori Gillis	Midfielder	5-7	Sr.	Leesburg, Va.	Loudoun County HS
22	Ava Amsden	Midfielder	5-6	Fr.	Colorado Springs, Colo.	Pine Creek HS
23	Gabbi Ceballos	Midfielder	5-8	So.	San Antonio, Texas	John Paul Stevens HS
24	Aurora Gaines	Forward	5-8	Fr.	Milton, Ga.	Cambridge HS
25	Senai Rogers	Forward	5-7	Fr.	Elk Grove, Calif.	Franklin HS
26	Sarah Stadler	Midfielder	5-9	Fr.	New Berlin, Wisc.	New Berlin Eisenhower HS
28	Brielyn Knowles	Midfielder	5-8	So.	Orlando, Fla.	Windermere Preparatory School
29	Jaden Humbyrd	Midfielder	5-6	Sr.	Issaquah, Wash.	Issaquah HS
30	Natalie Dvorakova	Defender	5-4	Fr.	Prague, Czechia	C.E. Byrd HS
32	Alyson Campbell	Goalkeeper	5-6	So.	Boulder, Colo.	Fairview HS
50	Sage Glover	Forward	5-2	Jr.	New Orleans, La.	North Atlanta HS
71	Mollie Baker	Forward	5-7	Gr.	Gilbert, Ariz.	Williams Field HS

**Coaching Staff:**

**Head Coach** – Sian Hudson (pronounced as Shawn) – 5th Season

**Associate Head Coach** – Seb Furness – 5th Season

**Assistant Coach** – Antony Blackburn – 1st Season

**Assistant Coach** – Conor Cable – 1<sup>st</sup> Season



## 2024 Pronunciation Guide:

00 – Sophine Kevorkian	So-FEEN	Keh-VOR-kee-in
1 – Auður Scheving	OW-dee	Shkiv-ing
2 – Jocelyn Ollivierre	Jaw-suh-lyn	Ole-lee-vair-ay
10 – Ida Hermannsdottir	Ee-duh	Her-mans-daw-ter
11 – Angelina Thoreson	An-jel-ee-nah	Thaw-sun
14 – Annaleigh Bruser	ANN-uh-lee	BREW-zer
16 – Emerson DeLuca	Em-mer-son	Deh-loo-kuh
17 – Caley Swierenga	KAY-lee	SWAIR-ing-uh
19 – Andrea Iljkic	Ahn-DREY-uh	ILL-kich
22 – Ava Amsden	A-vuh	AMS-din
23 – Gabbi Ceballos	Gah-bee	Suh-BYE-ose
24 – Aurora Gaines	Uh-roar-uh	Gain-z
25 – Senai Rogers	Seh-NEYE	Rah-gers
28 – Brielyn Knowles	BREE-lin	Noles
29 – Jaden Humbyrd	Jay-den	Hum-bird
30 – Natalie Dvorakova	Nat-uh-lee	d-vor-KOE-vuh

# Sian Hudson

HEAD COACH • 5th Season



**Sian (pronounced SHAWN) Hudson** was named LSU's head coach on December 11, 2019. Since that date, she's helped take LSU to places it's never been before as she enters her fifth season with the Tigers in 2024. In her four years thus far, Hudson has propelled the program to unprecedented success alongside Associate Head Coach Seb Furness, who joined the coaching staff that same year.

Under Hudson's leadership, the LSU Tigers achieved significant milestones during the 2023 season, marking their ninth NCAA Tournament appearance and third consecutive postseason showing—the most straight appearances by a coach in LSU history. Notably, Hudson secured her first LSU NCAA Tournament victory with a first-round win against Lamar on November 11, 2022.

Hudson's coaching achievements were recognized by the Louisiana Sports Writers Association (LSWA) as she was named the Coach of the Year in 2023, highlighting her impact on the state's soccer scene. In 2022, the Tigers achieved their 13th ten-win season and recorded five shutouts throughout the year. Hudson's coaching prowess was further highlighted by victories over two ranked opponents, including a historic top-10 win against No. 9 Texas on August 24, marking LSU's first-ever victory against Texas and their first top-10 road win. In her third season as head coach of the Fighting Tigers, Hudson led her squad to the program's eighth NCAA Tournament appearance in 2022 and second postseason appearance in her LSU career. The Tigers' first round win over Lamar on November 11 marked Hudson's first victory in the NCAA Tournament. Last year, Hudson recorded the program's 13th ten-win season with an overall record of 10-4-7 in 2022. The Tigers shutout five opponents and recorded a draw against three ranked opponents. In three short years, Hudson and the Tigers have shattered LSU Soccer Stadium attendance records. Two of the program's top ten all-time largest crowds were under Hudson as LSU continues to be one of the top program's nationally with fan attendance, earning Top 15 status in 2021.

Hudson and the Tigers placed No. 5 in the national rankings in 2021, which marked the highest in program history. In her second year, she amassed five wins over nationally ranked teams and helped LSU earn its seventh trip to the NCAA Tournament. The 2021 fall season started off about as good as it could have with the Tigers winning eight straight under the direction of Hudson. Included in those eight straight wins were triumphs over three ranked squads – No. 15 USF, No. 19 UCF, and No. 21 Arizona State. Pair those eight wins with the final three from the spring season of 2021 and LSU had won a program record 11 straight games. LSU tallied a total of four ranked wins during the 2022 season. The aforementioned three above in an 11-day span from late August to early September, and then the biggest one of them all came in the regular season finale against No. 4 Arkansas. With LSU's season on the line, the Tigers came out with a fiery passion under Hudson on Oct. 28, 2021, as the Tigers handed the Razorbacks their first and only loss of the conference regular season with a 4-2 victory. The win solidified LSU's positioning in the SEC and NCAA Tournament and was the highest ranked win in program history.

The LSU faithful caught on to the wonderful display of soccer being played and showed out on Sept. 17, 2021 as LSU opened up SEC play against Mississippi State in Baton Rouge. A school record crowd of 3,021 showed up and supported the Tigers en route to a 2-0 shutout victory over Mississippi State in what was a raucous environment. Hudson and company have invested an ample amount of time in the Baton Rouge community and it has showed. The program is on the rise and the LSU faithful has a knack for supporting winners. LSU averaged 1,334 fans per home match during the 2021 season to set the program, and that average ranked as the 12th highest in the nation.

Hudson's first win of her LSU career came on November 13, 2020, as the Tigers shutout Alabama for a 2-0 win over Alabama in the first round of the SEC Tournament in Orange Beach, Alabama. The Tigers followed that up with a 2-1 win over No. 14 Ole Miss two days later to advance to the SEC quarterfinals in their first SEC Tournament appearance under Hudson's reign.

The LSU soccer program has seen significant individual honors under Hudson's leadership, including three All-Region selections, eight All-SEC members, nine All-Louisiana selections, and one Freshman All-American, Ida Hermannsdóttir. Off the field, Hudson has shattered LSU Soccer Stadium attendance records, with three of the program's top ten largest crowds occurring under her tenure. LSU continues to be a national leader in fan attendance, ranking in the Top 15 nationally in 2021.

Academic success has also been a priority for the Tigers, with LSU Soccer maintaining an above 3.20 GPA average since Hudson's arrival. The team has earned seven Academic All-District honors and produced over 25 graduates since 2019, reflecting the program's commitment to nurturing achievement both on and off the field.

In terms of player development, Hudson's commitment to nurturing talent is evident, with multiple players progressing to the professional ranks since her arrival at LSU. Wasila Diwura-Soale, Maya Gordon, Mollie Swift, Lindsie Jennings, Shannon Cooke, Alesia Garcia, Brenna McPartlan, Olivia Wilkes, Tinaya Alexander, and Athena Kuehn are among those who have benefited from Hudson's coaching and are now thriving in professional leagues worldwide.

Hudson came to LSU with nearly 20 years of coaching experience. She came to Baton Rouge after serving as the head coach at the University of Colorado at Colorado Springs for the past three seasons. During her time as head coach at UCCS, Hudson led the Mountain Lions to a 52-10-4 record. Each of those three seasons saw UCCS qualify for the NCAA Tournament, the first three appearances in school history, including a run to the national semifinals in 2017. Her win totals in each of the three seasons – 17 in 2017, 16 in 2018, and 19 in 2019 – were the three winningest seasons in program history.

Hudson, the 2019 Rocky Mountain Athletic Conference Coach of the Year, led UCCS to a No. 1 national ranking for the first time in program history in 2019 as the Mountain Lions marched to a record of 19-2 and a NCAA South Central Region No. 1 seed in the NCAA Tournament. records. She and her staff at UCCS earned South Central Region Staff of the year honors in their debut season in 2017. That campaign saw the Mountain Lions go 17-5-1, make a run to the semifinals of the NCAA Tournament, and win the first ever Rocky Mountain Athletic Conference title in program history.

Prior to taking the head job at UCCS, Hudson spent two seasons as an assistant coach at NCAA Division I program Colorado College in Colorado Springs. In her two-year stint, she assisted in every aspect of the program and helped Colorado College reach the semifinals of the 2015 Mountain West Tournament.

A solid player in her own right, Hudson played on the Wales National Team and was at one point the youngest international player on the squad at the age of 16. She earned three caps on the senior level at the European Championships from 1997 to 1999, and she made 10 appearances at the UEFA Championships as a captain for the U19 squad. Hudson captured five senior league championships, three league cups and the Welsh Cup for Newport County Ladies squad from 1995-2000.

Hudson earned her bachelor's in Sports Coaching Science, majoring in sport psychology from Cardiff Metropolitan University in 2002. She's graduated with her master's degree in sports coaching from the University of Denver in May of 2020. She holds her U.S. Soccer Federation B License, and the UEFA C License and Goalkeepers Award.



# SIAN HUDSON

HOMETOWN	Newport, Wales
EDUCATION	Cardiff Metropolitan University (2002), University of Denver (2020)
HUSBAND	Rance
CHILDREN	Olivia, Reid

## COACHING CAREER

Season	School/Team	Position
2019-Pres.	LSU	Head Coach
2017-19	UCCS	Head Coach
2015-17	Colorado College	Assistant Coach
2014-15	Colorado Pride	General Manager*
2015	Colorado Pride	Head Coach*
2014	Colorado Pride	Assistant Coach*
2002-15	Pride Soccer Club	Director

\*Colorado Pride was in the W-League

## CAREER RECORD

Season	School/Team	Record
2024	LSU	7-7-1
2023	LSU	8-8-4
2022	LSU	10-4-7
2021	LSU	11-8-1
2020-21	LSU	8-8-3
2019	UCCS	19-2-0
2018	UCCS	16-3-3
2017	UCCS	17-5-1
Total		96-44-20

# SIAN HUDSON

## 2019-PRESENT



YEAR	OVERALL	SEC
2020-21	8-8-3	0-6-2 (7th SEC West)
2021	11-8-1	4-6 (5th SEC West)
2022	10-4-7	4-2-4 (5th SEC West)
2023	8-8-4	3-5-2 (6th SEC West)
2024	7-7-1	2-5-0
Totals	44-35-16	13-24-8

## LSU's Record When Under Sian Hudson

Home.....	22-12-7
Away .....	16-20-6
Neutral.....	5-3-3
vs. Ranked Opp. ....	7-13-4
Leading at Half.....	30-2-2
Trailing at Half .....	4-20-5
Tied .....	6-11-9

Taking More Shots .....	26-6-5
Taking Fewer Shots.....	13-27-9
Equal Shots .....	3-1-1
More Corners.....	25-8-3
Less Corners.....	16-21-9
Equal Corners .....	0-4-4

Scoring First.....	33-4-4
Opp. Scores First .....	9-29-4

When Scoring Two or More Goals .....	34-4-4
When Scoring None .....	0-18-8
When Scoring One Goal.....	6-10-4
When Scoring Two Goals.....	15-2-3
When Scoring Three Goals .....	10-1-1
When Scoring Four Goals .....	5-0-0
When Scoring Five Goals .....	4-0-0
When Scoring Six Goals .....	1-0-0
When Scoring Eight Goals .....	1-0-0

## LSU's Record Under Sian Hudson vs. SEC Opponents

Home.....	10-9-4
Away .....	3-15-5
Neutral.....	3-2-2
vs. Ranked Opp. ....	3-9-3
Leading at Half.....	9-0-1
Trailing at Half .....	2-16-2
Tied .....	5-9-8

Taking More Shots .....	6-3-1
Taking Fewer Shots.....	9-23-9
Equal Shots .....	1-1-1
More Corners.....	6-5-2
Less Corners.....	10-18-7
Equal Corners .....	0-3-2

Scoring First.....	11-1-2
Opp. Scores First .....	5-25-2

When Scoring Two or More Goals	13-1-2
When Scoring None .....	0-17-7
When Scoring One Goal.....	3-8-2
When Scoring Two Goals.....	7-1-1
When Scoring Three Goals .....	3-0-1
When Scoring Four Goals .....	3-0-0
When Scoring Five+ Goals.....	N/A



## TOP 10 ATTENDANCES

- 1 **3,021**  
Sept. 17, 2021 vs. Mississippi St  
(LSU won 2-0)
- 2 **2,624**  
Aug. 24, 2012 vs. Rice (Tied 1-1)
- 3 **2,542**  
Sept. 9, 2011 vs. Oregon  
(LSU won 1-0)
- 4 **2,402**  
Oct. 5, 2007 vs. #6 Tennessee  
(LSU won 3-0)
- 5 **2,160**  
Sept. 14, 2007 vs. McNeese State  
(LSU won 5-0)
- 6 **2,029**  
Sept. 29, 2023 vs. Florida  
(L, 0-4)
- 7 **2,004**  
Sept. 22, 2022 vs. Missouri  
(W, 2-1)
- 8 **1,982**  
Oct. 1, 2010 vs. Alabama  
(Tied 0-0)
- 9 **1,910**  
Sept. 14, 2012 vs. #10 Texas A&M  
(Texas A&M won 1-0)
- 10 **1,828**  
Aug. 31, 2007 vs. Southern Miss  
(LSU won 3-0)

The LSU Soccer Stadium saw the 2007 and 2015 seasons standing out the most with unbeaten records on the home pitch. 2007 saw the Tigers go 5-0-3 and 2015's unbeaten record at home was 8-0-4.

The impressive run with an unbeaten 5-0-3 home slate in 2007 was followed by an impressive 8-1 campaign in 2008, a 7-1-2 season in 2009, a 6-2-1 mark in 2010 and a stellar 7-1-1 season in 2011. While winning four SEC Western Division championships and making four trips to the NCAA Tournament from 2007-11, the Tigers posted a 33-5-7 record with a .811 winning percentage. They most recently finished the 2015 season unbeaten at home with an 8-0-4 mark in 12 matches played in Baton Rouge.

In fact, LSU's home performance is highlighted by a school record 18-game home unbeaten streak that came to an end on Oct. 26, 2008, with a 2-1 defeat to the No. 6-ranked Florida Gators.

The 2021 season saw multiple record breaking moments for the Tigers. LSU had the longest winning streak in the program with eight straight victories. The soccer stadium also saw a record breaking attendance in the 2021 season. In the Tigers match against Mississippi State on September 17, a crowd of 3,021 people showed out to watch the Tigers defeat the Bulldogs 2-0 at home. The attendance marked the highest in program history. LSU averaged 1,334 fans per home match during the 2021 season to set the program record, and that average ranked as the 12th highest in the nation.

In 2022, Hudson drew in the sixth largest crowd in program history against Missouri with 2,004 fans on September 22.

Last year, Hudson and the Tigers continued to shatter LSU Soccer Stadium attendance records as they welcomed another Top-10 crowd in program history in a conference matchup against Florida.

2024 marks the 29th season in the life of the LSU Soccer Stadium, which was first opened on Sept. 13, 1996, when the Tigers hosted SEC rival Tennessee.

## YEAR-BY-YEAR RESULTS LSU SOCCER STADIUM

	W	L	T
1995 *	9	2	1
1996	4	4	0
1997	0	9	0
1998	5	5	1
1999	4	6	0
2000	7	3	0
2001	5	2	1
2002	6	2	2
2003	7	2	0
2004	6	5	0
2005	5	3	0
2006	6	2	2
2007	5	0	3
2008	8	1	0
2009	7	1	2
2010	6	2	1
2011	7	1	1
2012	5	5	3
2013	4	3	2
2014	3	6	2
2015	8	0	4
2016	2	6	1
2017	6	4	1
2018	7	1	2
2019	2	5	1
2020-21	2	4	1
2021	5	2	0
2022	6	1	2
2023	6	2	3
<b>Totals</b>	<b>153</b>	<b>89</b>	<b>36</b>

\*The 1995 inaugural season was played on the University High field adjacent to the football

OPPONENT HISTORY



OPPONENT	RECORD	FIRST GAME	LAST GAME
Alabama	9-15-6	1995 - Alabama, 2-0	2023 - Alabama, 4-1
Alabama A&M	3-0	2000 - LSU, 10-1	2002 - LSU, 9-0
Arizona	1-2-0	2015 - LSU, 2-0	2021 - LSU, 2-0
Arizona State	1-2	2019 - ASU, 1-0	2024 - ASU, 5-2
Arkansas	15-12-5	1995 - LSU, 2-1	2024 - ARK, 0-1
Arkansas-Little Rock	2-1	1995 - LSU, 5-0	1997 - UALR, 2-0
Auburn	8-22-4	1995 - LSU, 2-1	2024 - Auburn, 4-0
Auburn-Montgomery	1-0	2001 - LSU, 4-1	2001 - LSU, 4-1
Austin Peay	1-0	2017 - LSU, 3-1	2017 - LSU, 3-1
Ball State	0-0-1	2015 - Draw, 1-1	2015 - Draw, 1-1
Baylor	1-0	2020 - LSU, 1-0	2020 - LSU, 1-0
Belmont	1-0	2005 - LSU, 2-0	2005 - LSU, 2-0
Birmingham Southern	1-0-1	2003 - LSU, 3-0	2005 - Draw, 1-1
Boston University	1-0	2018 - Draw, 0-0	2018 - Draw, 0-0
Butler	1-0	2016 - LSU, 2-1	2016 - LSU, 2-1
BYU	2-1-1	2008 - LSU, 4-1	2014 - LSU, 4-3
Centenary	2-1	1995 - Centenary, 4-0	2008 - LSU, 7-0
Central Florida	1-1-2	2009 - Draw, 0-0	2022 - Draw, 1-1
Clemson	0-1	1998 - Clemson, 7-0	1998 - Clemson, 7-0
Cincinnati	1-1	2017 - LSU, 1-0	2018 - Cincinnati, 2-1
Colgate	1-1	2016 - Colgate, 2-1	2017 - LSU, 3-0
College of Charleston	2-0	2007 - LSU, 4-0	2016 - LSU, 1-0
Colorado	0-2-1	1996 - Colorado, 2-1	2004 - Colorado, 4-1
Colorado College	0-1	1997 - CC, 3-0	1997 - CC, 3-0
Coastal Carolina	1-0	2003 - LSU, 2-1	2003 - LSU, 2-1
Creighton	0-2	1996 - Creighton, 3-1	1997 - Creighton, 2-1
Dallas Baptist	0-1	2020 - DBU, 2-1	2020 - DBU, 2-1
Davidson	0-1	2007 - Davidson, 3-0	2007 - Davidson, 3-0
Dayton	0-1	2004 - Dayton, 3-0	2004 - Dayton, 3-0
Duke	1-2-1	2009 - Draw, 2-2	2019 - Duke, 6-0
Embry-Riddle	1-0	2000 - LSU, 2-0	2000 - LSU, 2-0
Florida	2-21-2	1995 - Florida, 7-0	2023 - Florida, 4-0
Florida International	0-0-1	2012 - Draw, 0-0	2012 - Draw, 0-0
Florida State	1-3-1	1995 - Draw, 1-1	2022 - Florida State, 4-1
George Washington	1-1	2016 - GW, 3-1	2017 - LSU, 2-0
Georgia	8-11-4	1996 - Georgia, 3-1	2023 - LSU, 3-2
Grambling	1-0	2022 - LSU, 3-1	2022 - LSU, 3-1
Houston	3-0-1	2006 - LSU, 6-1	2012 - LSU, 2-0
Illinois	0-1	2010 - Illinois, 1-0	2010 - Illinois, 1-0
Illinois State	1-0	1996 - LSU, 5-0	1996 - LSU, 5-0
Indiana	2-0	2015 - LSU, 4-0	2016 - LSU, 3-0
Jackson State	2-0	2003 - LSU, 12-0	2005 - LSU, 4-0
Jacksonville State	1-0	1996 - LSU, 5-1	1996 - LSU, 5-1
James Madison	0-1	2019 - JMU, 1-0	2019 - JMU, 1-0
Kansas	0-1	1995 - Kansas, 2-1	1995 - Kansas, 2-1
Kentucky	9-14-3	1995 - Kentucky, 4-0	2024 - Kentucky, 2-1
Lamar	4-0	2016 - LSU, 4-0	2022 - LSU, 3-1
Liberty	2-0	2017 - LSU, 1-0	2018 - LSU, 1-0
Louisiana-Lafayette	11-0	2000 - LSU, 4-0	2024 - LSU, 3-1
Louisiana-Monroe	5-0-1	1999 - LSU, 5-0	2021 - LSU, 6-0
Louisiana Tech	2-0	2007 - LSU, 2-0	2013 - LSU, 1-0
Loyola-Chicago	1-0	2008 - LSU, 2-1	2008 - LSU, 2-1
Loyola (Md.)	1-0	2003 - LSU, 2-0	2003 - LSU, 2-0
Loyola (N.O.)	1-0	2002 - LSU, 7-0	2002 - LSU, 7-0
Maryland	0-1	1998 - Maryland, 7-0	1998 - Maryland, 7-0
Marquette	1-1	2014 - Marquette, 2-1	2015 - LSU, 5-1
Md. -Baltimore County	1-0	1995 - LSU, 2-1	1995 - LSU, 2-1

OPPONENT	RECORD	FIRST GAME	LAST GAME
McNeese State	9-1	1996 - LSU, 9-0	2019 - LSU, 1-0
Memphis	4-5	1995 - LSU, 5-0	2023 - Memphis, 2-1
Miami (Fla.)	1-1	2002 - Miami, 1-0	2007 - LSU, 4-1
Minnesota	1-1	2013 - Minnesota, 2-1	2015 - LSU, 1-0
Mississippi State	22-4-3	1995 - LSU, 2-0	2024 - MSU, 2-0
Mississippi Valley State	1-0-0	2017 - LSU, 5-0	2017 - LSU, 5-0
Missouri	7-2-1	2012 - LSU, 3-1	2022 - LSU, 2-1
Navy	1-1	2006 - Navy, 2-0	2019 - LSU, 1-0 (2OT)
New Mexico	0-0-1	1998 - Draw, 2-2	1998 - Draw, 2-2
Nicholls	6-1	1999 - LSU, 6-0	2014 - LSU, 3-0
North Carolina	0-2	2009 - UNC, 1-0	2019 - UNC, 1-0
North Carolina State	0-3	1997 - NC State, 2-0	2012 - NC State, 2-1
North Texas	0-2	1995 - North Texas, 4-2	1998 - North Texas, 3-0
Northwestern	1-0	2008 - LSU, 2-0	2008 - LSU, 2-0
Northwestern State	5-0-1	1998 - LSU, 2-0	2023 - LSU, 2-1
Ohio State	0-1	2004 - Ohio State, 4-0	2004 - Ohio State, 4-0
Oklahoma	6-0-1	1996 - LSU, 2-0	2024 - LSU, 3-1
Oklahoma State	0-2	1999 - OK State, 3-1	2000 - OK State, 2-0
Old Dominion	1-0	2024 - LSU, 2-1	2024 - LSU, 2-1
Ole Miss	14-14-5	1995 - LSU, 2-0	2024 - LSU, 1-0
Oregon	2-1	2005 - Oregon, 2-0	2015 - LSU, 2-1
Oregon State	0-1	2005 - OSU, 2-1 (OT)	2005 - OSU, 2-1 (OT)
Pepperdine	0-0-3	2011 - Draw, 1-1	2023 - Draw, 2-2
Princeton	1-0	2022 - LSU, 2-0	2022 - LSU, 2-0
Rice	1-2-1	2011 - Rice, 1-0 (2OT)	2014 - Rice, 1-0
Rutgers	0-1	2022 - Rutgers, 3-2	2022 - Rutgers, 3-2
Sam Houston State	2-0	2006 - LSU, 6-0	2021 - LSU, 8-0
Samford	2-0-1	2007 - LSU, 1-0 (2OT)	2019 - Draw, 2-2
San Diego	1-1	1999 - San Diego, 7-0	2022 - LSU, 4-1
Saint Mary's	0-1	1997 - St. Mary's, 3-0	1997 - St. Mary's, 3-0
San Francisco	1-1	1997 - SF, 3-1	2024 - LSU, 4-1
South Alabama	7-5	1995 - S. Ala., 2-1 (OT)	2020 - LSU, 2-1
South Carolina	5-12-6	1995 - LSU, 1-0	2023 - South Carolina, 1-0
South Florida	2-1	2009 - LSU, 2-1	2023 - USF, 1-0
Southeastern La.	6-1	1995 - LSU, 5-0	2021 - LSU, 2-0
Southern	4-0	2003 - LSU, 9-0	2023 - LSU, 5-0
Southern California	1-1	2013 - LSU, 1-0	2018 - USC, 2-0
Southern Methodist	0-3	1997 - SMU, 7-0	2006 - SMU, 2-0
Southern Miss	7-0	2006 - LSU, 2-1	2023 - LSU, 4-1
Stephen F. Austin	6-1-1	1995 - LSU, 6-0	2022 - LSU, 5-0
Stetson	2-0	2000 - LSU, 2-0	2018 - LSU, 2-0
Tennessee	5-14-5	1996 - Tennessee, 4-2	2023 - LSU, 1-0
Texas	1-4-1	2001 - Texas, 4-0	2024 - Texas, 3-1
Texas A&M	0-12-3	2009 - Draw, 1-1	2023 - Draw, 0-0
Texas A&M - Commerce	1-0	2023 - LSU, 6-0	2023 - LSU, 6-0
Texas Christian	1-2-1	1998 - LSU, 3-0	2014 - TCU, 2-0
Texas State	1-0	2018 - LSU, 2-0	2018 - LSU, 2-0
Texas Tech	3-1	1995 - Texas Tech, 2-1	2020 - LSU, 1-0
Troy	3-0	2000 - LSU, 4-0	2014 - LSU, 2-0
Tulane	3-3-1	1996 - LSU, 6-2	2004 - LSU, 2-1 (OT)
UC Davis	0-1	2024 - Davis, 4-3	2024 - Davis, 4-3
UMass Lowell	1-0	2024 - LSU, 3-0	2024 - LSU, 3-0
Utah	0-0-1	2024 - Draw, 1-1	2024 - Draw, 1-1
Vanderbilt	8-13-3	1995 - Vanderbilt, 6-0	2022 - LSU, 2-1
Villanova	0-3	2006 - Nova, 1-0 (2OT)	2019 - Nova, 1-0
Virginia Tech	0-2	2010 - VT, 1-0	2016 - VT, 1-0
Wake Forest	0-2	1998 - Wake Forest, 5-0	2010 - Wake Forest, 3-1
Washington	0-1	2008 - Wash., 3-2 (OT)	2008 - Wash., 3-2 (OT)
Western Kentucky	2-0	2015 - LSU, 4-1	2016 - LSU, 1-0
Wisconsin	0-1	2023 - Wisconsin, 3-0	2023 - Wisconsin, 3-0
Wyoming	1-0	2004 - LSU, 1-0	2004 - LSU, 1-0

# SOUTHEASTERN CONFERENCE™

Week 10

2024 WOMEN'S SOCCER

October 14

	Conference				Overall						
	W-L-T	Pts	Home	Away	W-L-T	Pct.	Home	Away	Neutral	Str	
Mississippi State	6-0-0	18	4-0-0	2-0-0	12-1-0	.923	9-0-0	3-1-0	0-0-0	W9	
Arkansas	6-1-0	18	4-0-0	2-1-0	11-1-1	.885	9-0-0	2-1-1	0-0-0	W2	
Auburn	4-1-2	14	2-0-2	2-1-0	12-1-2	.867	8-0-2	4-1-0	0-0-0	W1	
Texas	4-2-1	13	2-0-1	2-2-0	11-2-2	.800	8-0-2	3-2-0	0-0-0	W2	
South Carolina	3-1-2	11	2-0-0	1-1-2	6-1-6	.692	4-0-2	2-1-4	0-0-0	T1	
Georgia	2-2-3	9	0-2-1	2-0-2	6-4-5	.567	4-2-2	2-2-3	0-0-0	T1	
Kentucky	2-2-3	9	1-0-2	1-2-1	10-2-3	.767	8-0-2	2-2-1	0-0-0	L1	
Texas A&M	3-4-0	9	1-2-0	2-2-0	8-7-0	.533	4-3-0	4-4-0	0-0-0	L2	
Vanderbilt	2-2-3	9	1-1-1	1-0-2	7-2-5	.679	6-2-2	1-0-3	0-0-0	W2	
Alabama	1-1-5	8	1-1-2	0-0-3	8-3-5	.656	5-1-2	3-2-3	0-0-0	W1	
Tennessee	2-2-2	8	2-1-1	0-1-1	7-3-3	.654	6-1-2	1-2-1	0-0-0	L2	
Missouri	2-4-1	7	2-1-0	0-3-1	4-8-2	.357	4-3-0	0-5-2	0-0-0	L1	
LSU	2-5-0	6	2-2-0	0-3-0	7-7-1	.500	3-3-1	4-4-0	0-0-0	L4	
Florida	1-3-2	5	1-0-1	0-3-1	4-4-6	.500	3-1-2	1-3-4	0-0-0	T1	
Oklahoma	1-5-1	4	0-3-1	1-2-0	8-6-1	.567	5-3-1	3-3-0	0-0-0	L3	
Ole Miss	0-6-1	1	0-2-1	0-4-0	5-10-1	.344	4-4-1	1-6-0	0-0-0	T1	

## SCHEDULE/RESULTS (ALL TIMES EASTERN)

## Thursday, September 26

#9 Mississippi St. at #23 South Carolina – postponed  
 Tennessee at Florida – postponed  
 Georgia 1, at Kentucky 1  
 at LSU 3, Oklahoma 1  
 Texas 1, at Ole Miss 0  
 #2 Arkansas 2, at Vanderbilt 0  
 Missouri 1, at Alabama 1  
 at Texas A&M 4, #8 Auburn 1

## Sunday, September 29

at #2 Arkansas 2, #23 South Carolina 0  
 Kentucky 2, at Oklahoma 2  
 at #8 Auburn 3, Ole Miss 0  
 Alabama 2, at Georgia 2  
 Vanderbilt 1, at Tennessee 1  
 at Missouri 2, Florida 0  
 at Texas 2, Texas A&M 0  
 at #9 Mississippi St. 2, LSU 0

## Friday, October 4

at Florida 2, #22 Texas 1  
 at #7 Mississippi St. 1, #1 Arkansas 0  
 at Tennessee 1, Missouri 0  
 Kentucky 2, at Alabama 0  
 #16 Auburn 4, at LSU 0  
 Georgia 2, at Oklahoma 0  
 Texas A&M 4, at Ole Miss 1  
 #24 South Carolina 1, at Vanderbilt 1

## Thursday, October 10

#4 Mississippi St. 2, at Georgia 1  
 Alabama 1, at #14 Auburn 1  
 at #23 South Carolina 2, Florida 0  
 at #6 Arkansas 5, Tennessee 0  
 at Kentucky 2, LSU 1  
 at Missouri 5, Ole Miss 0  
 Vanderbilt 2, at Texas A&M 0  
 at Texas 1, Oklahoma 0

## Sunday, October 13

#14 Auburn 3, at Tennessee 2  
 #6 Arkansas 1, at Oklahoma 0  
 #23 South Carolina 2, at Ole Miss 2  
 Georgia 0, at Florida 0  
 at Alabama 1, Texas A&M 0  
 Texas 3, at LSU 1  
 at Vanderbilt 3, Kentucky 1  
 at #4 Mississippi St. 5, Missouri 0

## Friday, October 18

Vanderbilt at Florida	SECN+	3:30p
Arkansas at Texas	SECN+	6:00p
Tennessee at Georgia	SECN+	6:30p
Auburn at Kentucky	SECN+	7:00p
Alabama at South Carolina	SECN+	7:00p
Oklahoma at Missouri	SECN+	8:00p
Mississippi St. at Ole Miss	SECN+	8:00p
LSU at Texas A&M	SECN+	8:00p

## Thursday, October 24

Vanderbilt at LSU	SEC Network	7:00p
South Carolina at Tennessee	SECN+	7:00p
Texas A&M at Arkansas	SECN+	7:30p
Georgia at Auburn	SECN+	7:30p
Kentucky at Mississippi St.	SECN+	7:30p
Florida at Alabama	SECN+	8:00p
Missouri at Texas	SECN+	8:00p
Ole Miss at Oklahoma	SEC Network	9:00p

## Sunday, October 27

Tennessee at Kentucky	SEC Network	2:00p
Oklahoma at Florida	SECN+	4:00p
Texas at Georgia	SECN+	4:00p
LSU at Missouri	SEC Network	4:00p
Auburn at South Carolina	SECN+	4:00p
Alabama at Vanderbilt	SECN+	4:00p
Arkansas at Ole Miss	SECN+	4:00p
Mississippi St. at Texas A&M	SEC Network	6:00p

## Wednesday, October 30

Tennessee at Florida	SECN+	7:00p
----------------------	-------	-------

## NOTES

## • SEC Co-Offensive Players of the Week –

Florida's Lauren Donovan and Mississippi State's Ally Perry were named Co-Offensive Players of the Week. Donovan, a senior midfielder from Loveland, Ohio, scored both goals in the Gators' 2-1 over No. 22 Texas. Her first goal came at the 1:25 mark, the 11th fastest goal in Florida history. Perry, a junior midfielder from Frisco, Texas, Perry helped the Bulldogs make history, courtesy of her Olimpo goal in the 19th minute that proved to be the game winner over No. 1 Arkansas. Perry has seven goals and four game-winners already under her belt.

## • SEC Defensive Player of the Week –

Mississippi State's Maddy Anderson, a graduate goalkeeper from Seabrook, Texas, anchored the Bulldog defense in handing No. 1 ranked Arkansas their first loss of the season. It marked the first time the Razorbacks were held scoreless this season. It is the 34th career shutout for Anderson. She currently sits second in the SEC with nine shutouts this season (ten combined) while leading the conference with a goals-against average of just 0.19 and in save percentage of .920. Anderson has been crucial in Mississippi State being the lone team in the conference yet to concede in conference play.

## • SEC Freshman of the Week –

Texas A&M's Sydney Fuller, a freshman goalkeeper from Keller, Texas, picked up her fifth win in goal this season in the Aggies' 4-1 win at Ole Miss. She made four saves on the evening and had a shutout going until a late free kick from 19 yards.

• Six SEC teams are receiving mention in the October 8 United Soccer Coaches poll: Mississippi State 4th, Arkansas 6th, Auburn 14th and South Carolina 23rd. Georgia and Kentucky are among teams receiving votes.

• Mississippi State's No. 4 ranking is the highest ever in the coaches' poll.

• Nine of the SEC's 16 teams have been ranked in the United Soccer Coaches Top 25 this season.

• Twelve SEC schools rank in the Top 50 of the October 8 NCAA RPI, including six in the Top 25.

• The SEC is leading the nation in attendance with 150,388 fans attending games for an average of 1,275 fans per game.

• Arkansas (1st with 4.36) and Auburn (5th with 3.15) rank Top 5 nationally in scoring offense.

• Mississippi State (1st with .182) leads the nation in goals against average.

• Auburn's Anna Haddock (3rd/0.77 apg), Arkansas' Ava Tankersley (6th/0.64 apg) and Texas' Lexi Missimo (8th/.062 apg) rank in the Top 10 nationally for assists per game.

• Mississippi State's Maddy Anderson (1st/0.187) and Auburn's (2nd/0.249) rank 1-2 nationally in goals against average.



2024 Season Stats

Game Records

Overall	Conference	Home	Away	Neutral
7 - 7 - 1	2 - 5 - 0	3 - 3 - 1	4 - 4 - 0	0 - 0 - 0

Team statistics

	LS	OPP
SHOT STATISTICS		
Goals-Shot attempts	27-218	26-172
Goals scored per game	1.8	1.73
Shot pct.	.124	.151
Shots on goal-Attempts	102-218	75-172
SOG pct.	.468	.436
Shots/Game	14.5	11.5
Assists	16	28
GOAL BREAKDOWN		
Total Goals	27	26
Penalty	5	0
Unassisted	-	-
Overtime	0	0
Goals scored average	1.8	1.73
CORNER KICKS	68	76
PENALTY KICKS	5-6	0-1
OFFSIDES	24	28
PENALTIES		
Fouls	179	174
Yellow cards	20	15
Red cards	2	0
ATTENDANCE		
Total	4492	5749
Dates/Avg Per Date	7/642	8/719
Neutral Site #/Avg	0/0	-

Goals by Periods

Team	1st	2nd	OT1	OT2	TOTAL
LS	11	16	0	0	27
Opponents	10	16	0	0	26

Corners by Periods

Team	1st	2nd	OT1	OT2	TOTAL
LS	34	34	0	0	68
Opponents	42	34	0	0	76

Shots by Periods

Team	1st	2nd	OT1	OT2	TOTAL
LS	99	119	0	0	218
Opponents	82	90	0	0	172

Fouls by Periods

Team	1st	2nd	OT1	OT2	TOTAL
LS	82	97	0	0	179
Opponents	86	88	0	0	174

Saves by Periods

Team	1st	2nd	OT1	OT2	TOTAL
LS	26	25	0	0	51
Opponents	37	38	0	0	75

Offsides by Periods

Team	1st	2nd	OT1	OT2	TOTAL
LS	8	16	0	0	24
Opponents	10	18	0	0	28

## Game Records

Overall	Conference	Home	Away	Neutral
7 - 7 - 1	2 - 5 - 0	3 - 3 - 1	4 - 4 - 0	0 - 0 - 0

## Team Box Score

No.	Player	GP-GS	MIN	G	A	PTS	SH	SH%	SOG	SOG%	YC	RC	GWG	PK-ATT	FG	OT	HAT	GTG	FOUL
10	Hermansdottir, Ida	15-14	970	7	0	14	31	.226	18	.581	1	0	2	2-2	2	0	0	0	20
20	Galligan, Ava	14-7	744	4	2	10	31	.129	14	.452	1	0	2	0-0	2	0	0	0	8
19	Iljkic, Andrea	12-1	340	4	1	9	15	.267	7	.467	2	0	1	1-1	1	0	0	0	5
50	Glover, Sage	15-13	765	2	1	5	20	.100	11	.550	2	0	0	0-1	0	0	0	1	11
22	Amsden, Ava	15-2	478	2	0	4	10	.200	4	.400	1	0	0	2-2	0	0	0	0	8
4	Ferguson, Jazmin	14-14	1049	2	0	4	8	.250	3	.375	1	0	0	0-0	0	0	0	0	8
8	Shannon, Danielle	15-15	997	1	2	4	16	.063	7	.438	1	0	1	0-0	0	0	0	0	12
23	Ceballos, Gabbi	15-8	751	1	2	4	12	.083	3	.250	1	0	0	0-0	0	0	0	0	15
12	Cheesman, Sydney	14-14	1143	0	4	4	3	.000	2	.667	2	1	0	0-0	0	0	0	0	10
71	Baker, Mollie	15-10	846	1	1	3	28	.036	12	.429	1	0	0	0-0	0	0	0	0	15
9	Smith, Amy	12-3	492	1	1	3	16	.063	7	.438	1	0	0	0-0	0	0	0	0	15
11	Thoreson, Angelina	15-8	662	1	0	2	10	.100	5	.500	0	0	1	0-0	1	0	0	0	7
18	Major, Kelsey	14-4	446	1	0	2	5	.200	3	.600	0	0	0	0-0	1	0	0	0	6
29	Humbyrd, Jaden	15-7	583	0	1	1	3	.000	1	.333	1	0	0	0-0	0	0	0	0	10
17	Swierenga, Caley	15-10	987	0	1	1	1	.000	1	1.000	1	0	0	0-0	0	0	0	0	13
24	Gaines, Aurora	13-0	239	0	0	0	3	.000	1	.333	0	0	0	0-0	0	0	0	0	3
6	MacDonald, Riley	8-0	57	0	0	0	2	.000	1	.500	0	0	0	0-0	0	0	0	0	1
2	Ollivierre, Jocelyn	15-13	975	0	0	0	2	.000	1	.500	0	0	0	0-0	0	0	0	0	5
28	Knowles, Brielyn	8-0	117	0	0	0	1	.000	1	1.000	1	0	0	0-0	0	0	0	0	2
21	Gillis, Tori	13-7	621	0	0	0	1	.000	0	.000	2	0	0	0-0	0	0	0	0	4
14	Bruser, Annaleigh	1-0	33	0	0	0	0	.000	0	.000	0	0	0	0-0	0	0	0	0	1
16	DeLuca, Emerson	7-0	95	0	0	0	0	.000	0	.000	0	0	0	0-0	0	0	0	0	0
30	Dvorakova, Natalie	6-0	107	0	0	0	0	.000	0	.000	0	0	0	0-0	0	0	0	0	0
1	Scheving, Audur	15-15	1350	0	0	0	0	.000	0	.000	0	0	0	0-0	0	0	0	0	0
<b>Total</b>		<b>15</b>	<b>-</b>	<b>27</b>	<b>16</b>	<b>70</b>	<b>218</b>	<b>.124</b>	<b>102</b>	<b>.468</b>	<b>20</b>	<b>2</b>	<b>-</b>	<b>5-6</b>	<b>7</b>	<b>0</b>	<b>0</b>	<b>-</b>	<b>179</b>
<b>Opponents</b>		<b>15</b>	<b>-</b>	<b>26</b>	<b>28</b>	<b>80</b>	<b>172</b>	<b>.151</b>	<b>75</b>	<b>.436</b>	<b>15</b>	<b>0</b>	<b>-</b>	<b>0-1</b>	<b>8</b>	<b>0</b>	<b>0</b>	<b>-</b>	<b>174</b>

			Goal Average			Saves		Record			
No.	Goalie	GP-GS	MINS	GA	GA AVG	SAVES	PCT	W	L	T	SHO/CBO
1	Scheving, Audur	15-15	1350:00	26	1.73	47	.644	7	7	1	3/0
TM	TEAM	-	00:00	0	0.00	4	1.000	0	0	0	0/0
<b>Total</b>		<b>15</b>	<b>1350:00</b>	<b>26</b>	<b>1.73</b>	<b>51</b>	<b>.662</b>	<b>7</b>	<b>7</b>	<b>1</b>	<b>3</b>
<b>Opponents</b>		<b>15</b>	<b>1350:00</b>	<b>27</b>	<b>1.80</b>	<b>75</b>	<b>.735</b>	<b>7</b>	<b>7</b>	<b>1</b>	<b>3</b>

## Goals by Periods

Team	1st	2nd	OT1	OT2	TOTAL
LS	11	16	0	0	27
Opponents	10	16	0	0	26

## Corners by Periods

Team	1st	2nd	OT1	OT2	TOTAL
LS	34	34	0	0	68
Opponents	42	34	0	0	76

## Shots by Periods

Team	1st	2nd	OT1	OT2	TOTAL
LS	99	119	0	0	218
Opponents	82	90	0	0	172

## Fouls by Periods

Team	1st	2nd	OT1	OT2	TOTAL
LS	82	97	0	0	179
Opponents	86	88	0	0	174

## Saves by Periods

Team	1st	2nd	OT1	OT2	TOTAL
LS	26	25	0	0	51
Opponents	37	38	0	0	75

## Attendance Summary

	LS	Opponents
Total	4492	5749
Dates/Avg Per Date	7 / 642	8 / 719
Neutral Site #/Avg	0 / 0	



# 2024-25 LSU Women's Soccer Combined Statistics All games

Page 1/1  
as of Oct 17, 2024

Date	Opponent		Score	Att.
08/15/2024	at South Alabama	W	3-0	250
08/25/2024	Arizona St.	L	2-5	858
08/29/2024	at UMass Lowell	W	3-0	281
09/01/2024	at Old Dominion	W	2-1	423
09/05/2024	Utah	T	1-1	150
09/08/2024	Louisiana	W	3-1	0
09/12/2024	at San Francisco	W	4-1	308
09/15/2024	at UC Davis	L	3-4	450
* 09/19/2024	at Arkansas	L	0-1	2126
* 09/22/2024	Ole Miss	W	1-0	905
* 09/26/2024	Oklahoma	W	3-1	585
* 09/29/2024	at Mississippi St.	L	0-2	1376
* 10/04/2024	Auburn	L	0-4	1268
* 10/10/2024	at Kentucky	L	1-2	535
* 10/13/2024	Texas	L	1-3	726

## Team statistics

	LS	OPP
SHOT STATISTICS		
Goals-Shot attempts	27-218	26-172
Goals scored per game	1.8	1.73
Shot pct.	.124	.151
Shots on goal-Attempts	102-218	75-172
SOG pct.	.468	.436
Shots/Game	14.5	11.5
Assists	16	28
GOAL BREAKDOWN		
Total Goals	27	26
Penalty	5	0
Unassisted	-	-
Overtime	0	0
Goals scored average	1.8	1.73
CORNER KICKS	68	76
PENALTY KICKS	5-6	0-1
OFFSIDES	24	28
PENALTIES		
Fouls	179	174
Yellow cards	20	15
Red cards	2	0
ATTENDANCE		
Total	4492	5749
Dates/Avg Per Date	7/642	8/719
Neutral Site #/Avg	0/0	-

Record	Overall	Home	Away	Neutral
All Games	7-7-1	3-3-1	4-4-0	0-0-0
Conference	2-5-0	2-2-0	0-3-0	0-0-0
Non-Conference	5-2-1	1-1-1	4-1-0	0-0-0

#	Player	GP	G	A	PTS	SH	SH%	SOG	SOG%	GWG	PK-ATT
10	Hermannsdottir, Ida	15	7	0	14	31	.226	18	.581	2	2-2
20	Galligan, Ava	14	4	2	10	31	.129	14	.452	2	0-0
19	Iljkic, Andrea	12	4	1	9	15	.267	7	.467	1	1-1
50	Glover, Sage	15	2	1	5	20	.100	11	.550	0	0-1
22	Amsden, Ava	15	2	0	4	10	.200	4	.400	0	2-2
4	Ferguson, Jazmin	14	2	0	4	8	.250	3	.375	0	0-0
8	Shannon, Danielle	15	1	2	4	16	.063	7	.438	1	0-0
23	Ceballos, Gabbi	15	1	2	4	12	.083	3	.250	0	0-0
12	Cheesman, Sydney	14	0	4	4	3	.000	2	.667	0	0-0
71	Baker, Mollie	15	1	1	3	28	.036	12	.429	0	0-0
9	Smith, Amy	12	1	1	3	16	.063	7	.438	0	0-0
11	Thoreson, Angelina	15	1	0	2	10	.100	5	.500	1	0-0
18	Major, Kelsey	14	1	0	2	5	.200	3	.600	0	0-0
29	Humbyrd, Jaden	15	0	1	1	3	.000	1	.333	0	0-0
17	Swierenga, Caley	15	0	1	1	1	.000	1	1.000	0	0-0
24	Gaines, Aurora	13	0	0	0	3	.000	1	.333	0	0-0
6	MacDonald, Riley	8	0	0	0	2	.000	1	.500	0	0-0
2	Ollivierre, Jocelyn	15	0	0	0	2	.000	1	.500	0	0-0
28	Knowles, Brielyn	8	0	0	0	1	.000	1	1.000	0	0-0
21	Gillis, Tori	13	0	0	0	1	.000	0	.000	0	0-0
14	Bruser, Annaleigh	1	0	0	0	0	.000	0	.000	0	0-0
16	DeLuca, Emerson	7	0	0	0	0	.000	0	.000	0	0-0
30	Dvorakova, Natalie	6	0	0	0	0	.000	0	.000	0	0-0
1	Scheving, Audur	15	0	0	0	0	.000	0	.000	0	0-0
Total		15	27	16	70	218	.124	102	.468	-	5-6
Opponents		15	26	28	80	172	.151	75	.436	-	0-1

#	Goalie	GP	MIN.	GA	GA AVG	SAVES	PCT	W-L-T	SHO/CBO
1	Scheving, Audur	15	1350:00	26	1.73	47	.644	7-7-1	3/0
TM	TEAM	-	00:00	0	0.00	4	1.000	0-0-0	0/0
Total		15	1350:00	26	1.73	51	.662	7-7-1	3
Opponents		15	1350:00	27	1.80	75	.735	7-7-1	3

## Goals by Periods

Team	1st	2nd	OT1	OT2	TOTAL
LS	11	16	0	0	27
Opponents	10	16	0	0	26

## Shots by Periods

Team	1st	2nd	OT1	OT2	TOTAL
LS	99	119	0	0	218
Opponents	82	90	0	0	172

## Saves by Periods

Team	1st	2nd	OT1	OT2	TOTAL
LS	26	25	0	0	51
Opponents	37	38	0	0	75

## Corners by Periods

Team	1st	2nd	OT1	OT2	TOTAL
LS	34	34	0	0	68
Opponents	42	34	0	0	76

## Fouls by Periods

Team	1st	2nd	OT1	OT2	TOTAL
LS	82	97	0	0	179
Opponents	86	88	0	0	174





2024-25 LSU Women's Soccer  
Game Results  
All games

Page 1/1  
as of Oct 17, 2024

Team Results

	Date	Opponent		Score	Overall	Conf	Att.	Goals Scored
	08/15/2024	at South Alabama	W	3-0	1-0-0	0-0-0	250	Hermannsdottir, Ida Galligan, Ava Ferguson, Jazmin
	08/25/2024	Arizona St.	L	2-5	1-1-0	0-0-0	858	Ferguson, Jazmin Hermannsdottir, Ida
	08/29/2024	at UMass Lowell	W	3-0	2-1-0	0-0-0	281	Thoreson, Angelina Iljkic, Andrea Smith, Amy
	09/01/2024	at Old Dominion	W	2-1	3-1-0	0-0-0	423	Major, Kelsey Galligan, Ava
	09/05/2024	Utah	T	1-1	3-1-1	0-0-0	150	Glover, Sage
	09/08/2024	Louisiana	W	3-1	4-1-1	0-0-0	0	Hermannsdottir, Ida Hermannsdottir, Ida Ceballos, Gabbi
	09/12/2024	at San Francisco	W	4-1	5-1-1	0-0-0	308	Shannon, Danielle Galligan, Ava Hermannsdottir, Ida Hermannsdottir, Ida
	09/15/2024	at UC Davis	L	3-4	5-2-1	0-0-0	450	Baker, Mollie Glover, Sage Iljkic, Andrea
*	09/19/2024	at Arkansas	L	0-1	5-3-1	0-1-0	2126	-
*	09/22/2024	Ole Miss	W	1-0	6-3-1	1-1-0	905	Iljkic, Andrea
*	09/26/2024	Oklahoma	W	3-1	7-3-1	2-1-0	585	Hermannsdottir, Ida Galligan, Ava Amsden, Ava
*	09/29/2024	at Mississippi St.	L	0-2	7-4-1	2-2-0	1376	-
*	10/04/2024	Auburn	L	0-4	7-5-1	2-3-0	1268	-
*	10/10/2024	at Kentucky	L	1-2	7-6-1	2-4-0	535	Amsden, Ava
*	10/13/2024	Texas	L	1-3	7-7-1	2-5-0	726	Iljkic, Andrea

Team Record	W-L-T
Overall:	7-7-1
Conference:	2-5-0
Home:	3-3-1
Away:	4-4-0
Neutral:	0-0-0
Overtime:	0-0-0

Attendance	Dates	Total	Avg.
Total:	15	10241	683
Home:	7	4492	642
Away:	8	5749	719
Neutral:	0	0	0



**2024-25 LSU Women's Soccer**  
**Individual Game Highs**  
**All games**

Page 1/2  
as of Oct 17, 2024

**INDIVIDUAL HIGHS**

<b>POINTS</b>	4 Ida Hermannsdottir at San Francisco (09/12/2024) 4 Ida Hermannsdottir vs Louisiana (09/08/2024) 3 Ava Galligan at Old Dominion (09/01/2024) 2 Andrea Ilijkic vs Texas (10/13/2024) 2 Ava Amsden at Kentucky (10/10/2024) 2 Ava Amsden vs Oklahoma (09/26/2024) 2 Ava Galligan vs Oklahoma (09/26/2024) 2 Ida Hermannsdottir vs Oklahoma (09/26/2024) 2 Andrea Ilijkic vs Ole Miss (09/22/2024) 2 Andrea Ilijkic at UC Davis (09/15/2024) 2 Sage Glover at UC Davis (09/15/2024) 2 Danielle Shannon at UC Davis (09/15/2024) 2 Mollie Baker at UC Davis (09/15/2024) 2 Ava Galligan at San Francisco (09/12/2024) 2 Danielle Shannon at San Francisco (09/12/2024) 2 Gabbi Ceballos vs Louisiana (09/08/2024) 2 Sage Glover vs Utah (09/05/2024) 2 Kelsey Major at Old Dominion (09/01/2024) 2 Amy Smith at UMass Lowell (08/29/2024) 2 Andrea Ilijkic at UMass Lowell (08/29/2024) 2 Angelina Thoreson at UMass Lowell (08/29/2024) 2 Sydney Cheesman vs Arizona St. (08/25/2024) 2 Ida Hermannsdottir vs Arizona St. (08/25/2024) 2 Jazmin Ferguson vs Arizona St. (08/25/2024) 2 Jazmin Ferguson at South Alabama (08/15/2024) 2 Ava Galligan at South Alabama (08/15/2024) 2 Ida Hermannsdottir at South Alabama (08/15/2024)
<b>GOALS</b>	2 Ida Hermannsdottir at San Francisco (09/12/2024) 2 Ida Hermannsdottir vs Louisiana (09/08/2024) 1 Andrea Ilijkic vs Texas (10/13/2024) 1 Ava Amsden at Kentucky (10/10/2024) 1 Ava Amsden vs Oklahoma (09/26/2024) 1 Ava Galligan vs Oklahoma (09/26/2024) 1 Ida Hermannsdottir vs Oklahoma (09/26/2024) 1 Andrea Ilijkic vs Ole Miss (09/22/2024) 1 Andrea Ilijkic at UC Davis (09/15/2024) 1 Sage Glover at UC Davis (09/15/2024) 1 Mollie Baker at UC Davis (09/15/2024) 1 Ava Galligan at San Francisco (09/12/2024) 1 Danielle Shannon at San Francisco (09/12/2024) 1 Gabbi Ceballos vs Louisiana (09/08/2024) 1 Sage Glover vs Utah (09/05/2024) 1 Ava Galligan at Old Dominion (09/01/2024) 1 Kelsey Major at Old Dominion (09/01/2024) 1 Amy Smith at UMass Lowell (08/29/2024) 1 Andrea Ilijkic at UMass Lowell (08/29/2024) 1 Angelina Thoreson at UMass Lowell (08/29/2024) 1 Ida Hermannsdottir vs Arizona St. (08/25/2024) 1 Jazmin Ferguson vs Arizona St. (08/25/2024) 1 Jazmin Ferguson at South Alabama (08/15/2024) 1 Ava Galligan at South Alabama (08/15/2024) 1 Ida Hermannsdottir at South Alabama (08/15/2024)



**2024-25 LSU Women's Soccer**  
**High/Lows Analysis**  
**All games**

Page 1/4  
as of Oct 17, 2024

**LSU - Game Highs**

<b>POINTS</b>	11 at San Francisco (09/12/2024) 8 at UC Davis (09/15/2024) 8 at UMass Lowell (08/29/2024) 8 at South Alabama (08/15/2024)
<b>GOALS</b>	4 at San Francisco (09/12/2024) 3 vs Oklahoma (09/26/2024) 3 at UC Davis (09/15/2024) 3 vs Louisiana (09/08/2024) 3 at UMass Lowell (08/29/2024) 3 at South Alabama (08/15/2024)
<b>ASSISTS</b>	3 at San Francisco (09/12/2024) 2 at UC Davis (09/15/2024) 2 vs Utah (09/05/2024) 2 at Old Dominion (09/01/2024) 2 at UMass Lowell (08/29/2024) 2 vs Arizona St. (08/25/2024) 2 at South Alabama (08/15/2024)
<b>SHOTS</b>	29 vs Louisiana (09/08/2024) 29 at UMass Lowell (08/29/2024)
<b>SHOTS ON GOAL</b>	13 at UMass Lowell (08/29/2024) 12 vs Louisiana (09/08/2024)
<b>SAVES</b>	8 vs Auburn (10/04/2024) 7 at Mississippi St. (09/29/2024)
<b>CORNER KICKS</b>	13 at UMass Lowell (08/29/2024) 12 vs Arizona St. (08/25/2024)
<b>FOULS</b>	18 at Kentucky (10/10/2024) 18 vs Auburn (10/04/2024) 18 at San Francisco (09/12/2024)





0 **Katelyn Holt**

Goalkeeper  
Freshman  
Waterford, Va.  
St. Paul VI Catholic HS

**PRIOR TO LSU**

Goalkeeper hailing from Waterford, Virginia, where she attended St. Paul VI Catholic High School... Played for the Northern Virginia Alliance in the Elite Clubs National League (ECNL)... Was named the VAA Female Athlete of the Year in 2019... Played varsity soccer for four years at St. Paul’s was named the St. Paul’s VI Catholic High School Girls Soccer Rookie of the Year in 2021. Earned ECNL Mid-Atlantic Region All-Conference honors in 2023... Plans to major in business and sports administration at LSU... Described by LSU Coach Sian Hudson as “a very talented goalkeeper whose range is professional level in terms of the attributes she already has as a young player”.



00 **Sophie Kevorkian**

Goalkeeper  
Junior  
San Diego, Calif.  
University of San Diego/La Jolla High School

**KEVORKIAN, Sophie**

SEASON	TEAM	GP-GS	Min.	G	A	Pts	Shot	Shot%	SOG	SOG%	GW	PK-Att
2022-23	SD	19 - 18	1598:54	0	0	0	0	.000	0	.000	0	0 - 0
2023-24	SD	17 - 16	1438:16	0	0	0	0	.000	0	.000	0	0 - 0
TOTAL FOR LS		0 - 0	00:00	0	0	0	0	.000	0	.000	0	0 - 0
TOTAL		36 - 34	3037:10	0	0	0	0	.000	0	.000	0	0 - 0

SEASON	TEAM	GP-GS	Minutes	GA	GAAvg	Saves	Save%	W	L	T	SHO/CBO
2022-23	SD	19 - 18	1598:54	39	2.2	96	.711	2	11	4	3/0
2023-24	SD	17 - 16	1438:16	43	2.7	97	.693	1	13	2	2/0
TOTAL FOR LS		0 - 0	00:00	0	0	0	.000	0	0	0	/
TOTAL		36 - 34	3037:10	82	2.43	193	.702	3	24	6	5/0

**Single Game Hghs**

Statistic	Value	
Saves	14	at Cal St. Fullerton 09/07/23



## 1 Audur Scheving

Goalkeeper

Sophomore

Reykjavik, Iceland

Reykjavik University/ Menntaskólinn við Sund

### SCHEVING, Audur

SEASON	TEAM	GP-GS	Min.	G	A	Pts	Shot	Shot%	SOG	SOG%	GW	PK-Att
2024-25	LS	15 - 15	1350:00	0	0	0	0	.000	0	.000	0	0 - 0
TOTAL		15 - 15	1350:00	0	0	0	0	.000	0	.000	0	0 - 0

SEASON	TEAM	GP-GS	Minutes	GA	GAAvg	Saves	Save%	W	L	T	SHO/CBO
2024-25	LS	15 - 15	1350:00	26	1.74	47	.644	7	7	1	3/0
TOTAL		15 - 15	1350:00	26	1.74	47	.644	7	7	1	3/0

### Single Game Highs

Statistic	Value	
Saves	6	at South Alabama 08/15/24, at Mississippi St. 09/29/24, vs Auburn 10/04/24



## 2 Jocelyn Ollivierre

Defender

Junior

Colorado Springs, Colo.

Air Academy HS

### OLLIVIERRE, Jocelyn

SEASON	TEAM	GP-GS	Min.	G	A	Pts	Shot	Shot%	SOG	SOG%	GW	PK-Att
2022-23	LS	20 - 6	939:19	0	0	0	2	.000	1	.500	0	0 - 0
2023-24	LS	20 - 18	1419:41	0	1	1	2	.000	1	.500	0	0 - 0
2024-25	LS	15 - 13	974:45	0	0	0	2	.000	1	.500	0	0 - 0
TOTAL		55 - 37	3333:46	0	1	1	6	.000	3	.500	0	0 - 0

### Single Game Highs

Statistic	Value	
Points	1	vs Northwestern St. 09/10/23
Assists	1	vs Northwestern St. 09/10/23
Shots	1	6 times



#### 4 Jazmin Ferguson

Defender  
Junior  
Conyers, Ga.  
East Carolina

##### FERGUSON, Jazmin

SEASON	TEAM	GP-GS	Min.	G	A	Pts	Shot	Shot%	SOG	SOG%	GW	PK-Att
2022-23	ECU	18 - 18	1540:03	1	0	2	8	.125	1	.125	1	0 - 0
2023-24	ECU	19 - 19	1710:00	4	1	9	22	.182	10	.455	1	0 - 0
2024-25	LS	14 - 14	1048:33	2	0	4	8	.250	3	.375	0	0 - 0
TOTAL FOR LS		14 - 14	1048:33	2	0	4	8	.250	3	.375	0	0 - 0
TOTAL		51 - 51	4298:36	7	1	15	38	.184	14	.368	2	0 - 0

##### Single Game Highs

Statistic	Value	
Points	2	7 times
Goals	1	7 times
Assists	1	at Western Caro. 09/10/23
Shots	3	at High Point 09/03/23



#### 6 Riley MacDonald

Midfielder  
Freshman  
Highlands Ranch, Colo.  
Mountain Vista HS

##### MACDONALD, Riley

SEASON	TEAM	GP-GS	Min.	G	A	Pts	Shot	Shot%	SOG	SOG%	GW	PK-Att
2024-25	LS	8 - 0	56:24	0	0	0	2	.000	1	.500	0	0 - 0
TOTAL		8 - 0	56:24	0	0	0	2	.000	1	.500	0	0 - 0

##### Single Game Highs

Statistic	Value	
Shots	1	vs Ole Miss 09/22/24, vs Auburn 10/04/24



#### 8 Danielle Shannon

Midfielder  
RS Sophomore  
Houston, Texas  
Houston Dash Academy

##### SHANNON, Danielle

SEASON	TEAM	GP-GS	Min.	G	A	Pts	Shot	Shot%	SOG	SOG%	GW	PK-Att
2022-23	LS	5 - 2	199:20	0	0	0	1	.000	0	.000	0	0 - 0
2023-24	LS	20 - 15	1245:01	0	3	3	10	.000	1	.100	0	0 - 0
2024-25	LS	15 - 15	996:28	1	2	4	16	.063	7	.438	1	0 - 0
TOTAL		40 - 32	2440:50	1	5	7	27	.037	8	.296	1	0 - 0

##### Single Game Highs

Statistic	Value	
Points	2	at San Francisco 09/12/24, at UC Davis 09/15/24
Goals	1	at San Francisco 09/12/24
Assists	2	at UC Davis 09/15/24
Shots	2	7 times



## 9 Amy Smith

Forward  
Freshman  
Fort Collins, Colo.  
Fossil Ridge HS

### SMITH, Amy

SEASON	TEAM	GP-GS	Min.	G	A	Pts	Shot	Shot%	SOG	SOG%	GW	PK-Att
2024-25	LS	12 - 3	491:57	1	1	3	16	.063	7	.438	0	0 - 0
TOTAL		12 - 3	491:57	1	1	3	16	.063	7	.438	0	0 - 0

### Single Game Highs

Statistic	Value	
Points	2	at UMass Lowell 08/29/24
Goals	1	at UMass Lowell 08/29/24
Assists	1	at San Francisco 09/12/24
Shots	3	at UMass Lowell 08/29/24, vs Louisiana 09/08/24, at Arkansas 09/19/24



## 10 Ida Hermannsdottir

Midfielder  
Junior  
Reykjavik, Iceland  
Valur Reykjavik

### HERMANNSDOTTIR, Ida

SEASON	TEAM	GP-GS	Min.	G	A	Pts	Shot	Shot%	SOG	SOG%	GW	PK-Att
2022-23	LS	19 - 16	1254:38	7	2	16	23	.304	16	.696	2	1 - 1
2023-24	LS	20 - 14	1111:55	4	2	10	32	.125	13	.406	1	1 - 1
2024-25	LS	15 - 14	969:50	7	0	14	31	.226	18	.581	2	2 - 2
TOTAL		54 - 44	3336:24	18	4	40	86	.209	47	.547	5	4 - 4

### Single Game Highs

Statistic	Value	
Points	4	4 times
Goals	2	4 times
Assists	1	4 times
Shots	5	4 times



## 11 Angelina Thoreson

Forward  
Junior  
Uppsala, Sweden  
IK Uppsala

### THORESON, Angelina

SEASON	TEAM	GP-GS	Min.	G	A	Pts	Shot	Shot%	SOG	SOG%	GW	PK-Att
2022-23	LS	21 - 17	1240:15	1	9	11	29	.034	13	.448	1	0 - 0
2024-25	LS	15 - 8	661:51	1	0	2	10	.100	5	.500	1	0 - 0
TOTAL		36 - 25	1902:06	2	9	13	39	.051	18	.462	2	0 - 0

### Single Game Highs

Statistic	Value	
Points	2	at UMass Lowell 08/29/24, at Princeton 09/08/22
Goals	1	at Princeton 09/08/22, at UMass Lowell 08/29/24
Assists	1	9 times
Shots	6	at UMass Lowell 08/29/24





## 12 Sydney Cheesman

Defender

Junior

Lafayette, Colo.

North Carolina/Centaurus High School

### CHEESMAN, Sydney

SEASON	TEAM	GP-GS	Min.	G	A	Pts	Shot	Shot%	SOG	SOG%	GW	PK-Att
2022-23	UNC	4 - 0	111:21	0	0	0	0	.000	0	.000	0	0 - 0
2023-24	UNC	5 - 0	67:27	0	0	0	1	.000	0	.000	0	0 - 0
2024-25	LS	14 - 14	1142:34	0	4	4	3	.000	2	.667	0	0 - 0
TOTAL FOR LS		14 - 14	1142:34	0	4	4	3	.000	2	.667	0	0 - 0
TOTAL		23 - 14	1321:22	0	4	4	4	.000	2	.500	0	0 - 0

### Single Game Highs

Statistic	Value	
Points	2	vs Arizona St. 08/25/24
Assists	2	vs Arizona St. 08/25/24
Shots	2	at UMass Lowell 08/29/24



## 14 Annaleigh Bruser

Defender

Freshman

Baton Rouge, La.

IMG Academy

### BRUSER, Annaleigh

SEASON	TEAM	GP-GS	Min.	G	A	Pts	Shot	Shot%	SOG	SOG%	GW	PK-Att
2024-25	LS	1 - 0	32:13	0	0	0	0	.000	0	.000	0	0 - 0
TOTAL		1 - 0	32:13	0	0	0	0	.000	0	.000	0	0 - 0



## 16 Emerson DeLuca

Defender

Freshman

Westminster, Colo.

Broomfield High School

### DELUCA, Emerson

SEASON	TEAM	GP-GS	Min.	G	A	Pts	Shot	Shot%	SOG	SOG%	GW	PK-Att
2024-25	LS	7 - 0	94:38	0	0	0	0	.000	0	.000	0	0 - 0
TOTAL		7 - 0	94:38	0	0	0	0	.000	0	.000	0	0 - 0



## 17 Caley Swierenga

Defender  
Sophomore  
Denver, Colo.  
Columbine High School

### SWIERENGA, Caley

SEASON	TEAM	GP-GS	Min.	G	A	Pts	Shot	Shot%	SOG	SOG%	GW	PK-Att
2023-24	LS	17 - 10	1003:05	0	2	2	5	.000	3	.600	0	0 - 0
2024-25	LS	15 - 10	986:39	0	1	1	1	.000	1	1.000	0	0 - 0
<b>TOTAL</b>		<b>32 - 20</b>	<b>1989:44</b>	<b>0</b>	<b>3</b>	<b>3</b>	<b>6</b>	<b>.000</b>	<b>4</b>	<b>.667</b>	<b>0</b>	<b>0 - 0</b>

### Single Game Highs

Statistic	Value	
Points	2	vs Tex. A&M-Commerce 09/03/23
Assists	2	vs Tex. A&M-Commerce 09/03/23
Shots	1	6 times



## 18 Kelsey Major

Midfielder  
Redshirt Sophomore  
New Orleans, La.  
St. Mary's Dominican HS

### MAJOR, Kelsey

SEASON	TEAM	GP-GS	Min.	G	A	Pts	Shot	Shot%	SOG	SOG%	GW	PK-Att
2023-24	LS	20 - 1	607:17	2	2	6	16	.125	6	.375	0	0 - 0
2024-25	LS	14 - 4	445:54	1	0	2	5	.200	3	.600	0	0 - 0
<b>TOTAL</b>		<b>34 - 5</b>	<b>1053:11</b>	<b>3</b>	<b>2</b>	<b>8</b>	<b>21</b>	<b>.143</b>	<b>9</b>	<b>.429</b>	<b>0</b>	<b>0 - 0</b>

### Single Game Highs

Statistic	Value	
Points	4	vs Tex. A&M-Commerce 09/03/23
Goals	2	vs Tex. A&M-Commerce 09/03/23
Assists	1	vs Southern Miss. 08/20/23, vs Mississippi St. 09/24/23
Shots	4	vs Tex. A&M-Commerce 09/03/23



## 19 Andrea Ilijkic

Forward  
Sophomore  
Littleton, Colo.  
Columbine High School

### ILJKIC, Andrea

SEASON	TEAM	GP-GS	Min.	G	A	Pts	Shot	Shot%	SOG	SOG%	GW	PK-Att
2024-25	LS	12 - 1	339:16	4	1	9	15	.267	7	.467	1	1 - 1
<b>TOTAL</b>		<b>12 - 1</b>	<b>339:16</b>	<b>4</b>	<b>1</b>	<b>9</b>	<b>15</b>	<b>.267</b>	<b>7</b>	<b>.467</b>	<b>1</b>	<b>1 - 1</b>

### Single Game Highs

Statistic	Value	
Points	2	4 times
Goals	1	4 times
Assists	1	vs Oklahoma 09/26/24
Shots	4	vs Texas 10/13/24



## 20 Ava Galligan

Forward/Midfielder

Sophomore

Ashburn, Va.

Independence High School

### GALLIGAN, Ava

SEASON	TEAM	GP-GS	Min.	G	A	Pts	Shot	Shot%	SOG	SOG%	GW	PK-Att
2023-24	LS	20 - 17	1324:23	4	5	13	39	.103	13	.333	1	0 - 0
2024-25	LS	14 - 7	743:21	4	2	10	31	.129	14	.452	2	0 - 0
<b>TOTAL</b>		<b>34 - 24</b>	<b>2067:44</b>	<b>8</b>	<b>7</b>	<b>23</b>	<b>70</b>	<b>.114</b>	<b>27</b>	<b>.386</b>	<b>3</b>	<b>0 - 0</b>

### Single Game Highs

Statistic	Value	
Points	3	vs Pepperdine 09/07/23, at Old Dominion 09/01/24
Goals	1	8 times
Assists	1	7 times
Shots	6	vs Tennessee 10/08/23, vs Arkansas 10/19/23



## 21 Tori Gillis

Midfielder

Senior

Leesburg, Va.

Loudon County HS

### GILLIS, Tori

SEASON	TEAM	GP-GS	Min.	G	A	Pts	Shot	Shot%	SOG	SOG%	GW	PK-Att
2022-23	LS	2 - 0	14:42	0	0	0	0	.000	0	.000	0	0 - 0
2023-24	LS	18 - 11	988:38	0	1	1	5	.000	3	.600	0	0 - 0
2024-25	LS	13 - 7	620:01	0	0	0	1	.000	0	.000	0	0 - 0
<b>TOTAL</b>		<b>33 - 18</b>	<b>1623:21</b>	<b>0</b>	<b>1</b>	<b>1</b>	<b>6</b>	<b>.000</b>	<b>3</b>	<b>.500</b>	<b>0</b>	<b>0 - 0</b>

### Single Game Highs

Statistic	Value	
Points	1	vs Pepperdine 09/07/23
Assists	1	vs Pepperdine 09/07/23
Shots	2	vs Arkansas 10/19/23



## 22 Ava Amsden

Midfielder

Freshman

Colorado Springs, Colo.

Pine Creek High School

### AMSDEN, Ava

SEASON	TEAM	GP-GS	Min.	G	A	Pts	Shot	Shot%	SOG	SOG%	GW	PK-Att
2024-25	LS	15 - 2	477:41	2	0	4	10	.200	4	.400	0	2 - 2
<b>TOTAL</b>		<b>15 - 2</b>	<b>477:41</b>	<b>2</b>	<b>0</b>	<b>4</b>	<b>10</b>	<b>.200</b>	<b>4</b>	<b>.400</b>	<b>0</b>	<b>2 - 2</b>

### Single Game Highs

Statistic	Value	
Points	2	vs Oklahoma 09/26/24, at Kentucky 10/10/24
Goals	1	vs Oklahoma 09/26/24, at Kentucky 10/10/24
Shots	2	vs Arizona St. 08/25/24, vs Utah 09/05/24, vs Louisiana 09/08/24



## 23 Gabbi Ceballos

Midfielder

Sophomore

San Antonio, Texas

TCU/John Paul Stevens High School

### CEBALLOS, Gabbi

SEASON	TEAM	GP-GS	Min.	G	A	Pts	Shot	Shot%	SOG	SOG%	GW	PK-Att
2023-24	TCU	1 - 0	04:01	0	0	0	0	.000	0	.000	0	0 - 0
2024-25	LS	15 - 8	750:15	1	2	4	12	.083	3	.250	0	0 - 0
<b>TOTAL FOR LS</b>		<b>15 - 8</b>	<b>750:15</b>	<b>1</b>	<b>2</b>	<b>4</b>	<b>12</b>	<b>.083</b>	<b>3</b>	<b>.250</b>	<b>0</b>	<b>0 - 0</b>
<b>TOTAL</b>		<b>16 - 8</b>	<b>754:16</b>	<b>1</b>	<b>2</b>	<b>4</b>	<b>12</b>	<b>.083</b>	<b>3</b>	<b>.250</b>	<b>0</b>	<b>0 - 0</b>

### Single Game Highs

Statistic	Value	
Points	2	vs Louisiana 09/08/24
Goals	1	vs Louisiana 09/08/24
Assists	1	vs Utah 09/05/24, at San Francisco 09/12/24
Shots	3	at UC Davis 09/15/24, vs Louisiana 09/08/24



## 24 Aurora Gaines

Forward

Freshman

Milton, Ga.

Cambridge High School

### GAINES, Aurora

SEASON	TEAM	GP-GS	Min.	G	A	Pts	Shot	Shot%	SOG	SOG%	GW	PK-Att
2024-25	LS	13 - 0	238:25	0	0	0	3	.000	1	.333	0	0 - 0
<b>TOTAL</b>		<b>13 - 0</b>	<b>238:25</b>	<b>0</b>	<b>0</b>	<b>0</b>	<b>3</b>	<b>.000</b>	<b>1</b>	<b>.333</b>	<b>0</b>	<b>0 - 0</b>



## 25 Senai Rogers

Forward

Freshman

Elk Grove, Calif.

Franklin High School

### PRIOR TO LSU

Gifted attacker who excels on the left wing hailing from Elk Grove, California... Attended Franklin High School and competed for Blackhawks Soccer Club... Ranked as a three-star recruit by Top Drawer Soccer.. Captained her high school team all five years and earned multiple honors throughout her career, including being named the Delta League Player of the Year, Offensive Player of the Year and First-Team All-League... Earned the Scholar Athlete and Community Service awards in 2022 for her efforts in the classroom and in her community... Plans to major in kinesiology in hopes of becoming a veterinarian when she arrives on campus next fall... Described by LSU Head Coach Sian Hudson as a player with "an 'it' factor" and a player who is "capable of reaching impressive heights in the right program that can stretch her tactically".





## 26 Sarah Stadler

Midfielder

Freshman

New Berlin, Wisc.

New Berlin Eisenhower HS

### PRIOR TO LSU

Dynamic midfielder from New Berlin, Wisconsin, where she attended New Berlin Eisenhower High School... Ranked as a three-star recruit by Top Drawer Soccer... Played her club ball with SC Wave Soccer Club, where she captained the team for four seasons and was the team representative for the Girls Academy since 2021... Appeared on the 2022 Wisconsin International Team that traveled to Spain to play in the Donosti Cup... Was a three-time state champion at New Berlin Eisenhower while also earning All-State Second Team Honors in 2023 and All-Conference First Team honors in 2021, 2022 and 2023... Was the Student Union Senior President, a member of National Honor Society and a part of the Student Athlete Leadership Team during her time at New Berlin... Mentioned the importance of her education here at LSU and plans to pursue a degree in engineering during her time in Baton Rouge... LSU Coach Sian Hudson expressed her excitement about Stadler joining the program, saying that she is "a versatile player who is comfortable in multiple lines of the field and someone we feel confident in the fact that she will add quality no matter where she ends up positionally".



## 28 Brielyn Knowles

Midfielder

Sophomore

Orlando, Fla.

Windermere Preparatory School

### KNOWLES, Brielyn

SEASON	TEAM	GP-GS	Min.	G	A	Pts	Shot	Shot%	SOG	SOG%	GW	PK-Att
2023-24	LS	3 - 0	75:53	0	0	0	0	.000	0	.000	0	0 - 0
2024-25	LS	8 - 0	116:52	0	0	0	1	.000	1	1.000	0	0 - 0
<b>TOTAL</b>		<b>11 - 0</b>	<b>192:45</b>	<b>0</b>	<b>0</b>	<b>0</b>	<b>1</b>	<b>.000</b>	<b>1</b>	<b>1.000</b>	<b>0</b>	<b>0 - 0</b>



## 29 Jaden Humbyrd

Midfielder

Senior

Issaquah, Washington

Issaquah High School

### HUMBYRD, Jaden

SEASON	TEAM	GP-GS	Min.	G	A	Pts	Shot	Shot%	SOG	SOG%	GW	PK-Att
2022-23	LS	14 - 6	464:02	0	0	0	3	.000	1	.333	0	0 - 0
2023-24	LS	17 - 7	730:16	0	0	0	6	.000	2	.333	0	0 - 0
2024-25	LS	15 - 7	582:15	0	1	1	3	.000	1	.333	0	0 - 0
<b>TOTAL</b>		<b>46 - 20</b>	<b>1776:33</b>	<b>0</b>	<b>1</b>	<b>1</b>	<b>12</b>	<b>.000</b>	<b>4</b>	<b>.333</b>	<b>0</b>	<b>0 - 0</b>

### Single Game Highs

Statistic	Value	
Points	1	at UMass Lowell 08/29/24
Assists	1	at UMass Lowell 08/29/24
Shots	3	vs Northwestern St. 09/10/23



### 30 Natalie Dvorakova

Defender

Freshman

Prague, Czechia

C.E. Byrd High School

#### DVORAKOVA, Natalie

SEASON	TEAM	GP-GS	Min.	G	A	Pts	Shot	Shot%	SOG	SOG%	GW	PK-Att
2024-25	LS	6 - 0	106:23	0	0	0	0	.000	0	.000	0	0 - 0
<b>TOTAL</b>		<b>6 - 0</b>	<b>106:23</b>	<b>0</b>	<b>0</b>	<b>0</b>	<b>0</b>	<b>.000</b>	<b>0</b>	<b>.000</b>	<b>0</b>	<b>0 - 0</b>



### 32 Alyson Campbell

Goalkeeper

Sophomore

Boulder, Colo.

Fairview HS

#### PRIOR TO LSU

A native of Boulder, Colorado ... Attended Fairview High School ... Two-time captain of the Fairview soccer team and won the character embodiment award for her leadership on the squad ... Two-time Academic All-State member and was named to the All-Region First Team in 2022 ... Won the Colorado State Cup MVP with FC Boulder in 2019 before joining the Colorado Rapids ECNL club team.



### 50 Sage Glover

Forward

Junior

New Orleans, La.

North Atlanta HS

#### GLOVER, Sage

SEASON	TEAM	GP-GS	Min.	G	A	Pts	Shot	Shot%	SOG	SOG%	GW	PK-Att
2022-23	LS	21 - 7	755:06	4	0	8	14	.286	8	.571	0	0 - 0
2023-24	LS	19 - 10	828:10	4	0	8	16	.250	9	.563	3	0 - 0
2024-25	LS	15 - 13	764:32	2	1	5	20	.100	11	.550	0	0 - 1
<b>TOTAL</b>		<b>55 - 30</b>	<b>2347:48</b>	<b>10</b>	<b>1</b>	<b>21</b>	<b>50</b>	<b>.200</b>	<b>28</b>	<b>.560</b>	<b>3</b>	<b>0 - 1</b>

#### Single Game Highs

Statistic	Value	
Points	2	10 times
Goals	1	10 times
Assists	1	at South Alabama 08/15/24
Shots	4	vs Louisiana 09/08/24



**71 Mollie Baker**

Forward  
Graduate Student  
Gilbert, Ariz.  
Williams Field HS/North Carolina

**BAKER, Mollie**

SEASON	TEAM	GP-GS	Min.	G	A	Pts	Shot	Shot%	SOG	SOG%	GW	PK-Att
2020-21	UNC	7 - 0	110:07	0	0	0	9	.000	5	.556	0	0 - 0
2021-22	UNC	7 - 0	99:20	0	1	1	4	.000	2	.500	0	0 - 0
2022-23	LS	21 - 9	1103:31	4	6	14	48	.083	17	.354	1	0 - 0
2023-24	LS	20 - 20	1551:00	3	5	11	61	.049	25	.410	1	0 - 0
2024-25	LS	15 - 10	845:17	1	1	3	28	.036	12	.429	0	0 - 0
TOTAL FOR LS		56 - 39	3499:48	8	12	28	137	.058	54	.394	2	0 - 0
TOTAL		70 - 39	3709:15	8	13	29	150	.053	61	.407	2	0 - 0

**Single Game Highs**

Statistic	Value	
Points	5	vs Southern Miss. 08/20/23
Goals	2	vs Southern Miss. 08/20/23
Assists	1	13 times
Shots	11	vs Northwestern St. 09/10/23