

20 **LSU** 08



THIS IS LSU



LSU Gymnastics

PRACTICE FACILITY



When determining what makes an athletic program successful, many components are factors in its success. Ask any coach and they will say that quality facilities rank among the most important elements.

The LSU Gymnastics team and head coach D-D Breaux moved into the newly renovated gymnastics training area in the LSU Field House in the Fall of 2000 and immediately reaped the benefits of one of the finest training facilities in the nation.

The LSU Field House renovations and expansion created a facility, that includes a locker room, squad room, 18,143 square feet of training space - double the previous space - an equipment room, sauna, sound room and conditioning/aerobic room. The changes helped create a safer, more functional training environment.

The vaulting, tumble track and drill area overlook the Bernie Moore Track Stadium.



Aerobic exercise and conditioning area

“When girls come to visit our facility they are impressed. They are able to look out and see the other athletic facilities, and they are able to grasp the entire experience they are looking at if they choose to attend LSU.”

- HEAD COACH D-D BREAUX

One of the nicest aspects of the facility is the glass wall that allows an onlooker to see the multi-million dollar Bernie Moore Track Stadium, legendary Tiger Stadium, the Pete Maravich Assembly Center - the competitive home of the LSU gymnastics team - and the beautiful landscaping of LSU's campus.

D-D Breaux started to fathom ideas of a new facility years ago, never thinking that one day dreams would turn into realities under her tenure.

"About 15 years ago I started thinking about the modifications that were necessary

for us to train at an elite level. It was easy to realize that we needed it not only to maintain our top 10 status, but it was also a safety issue. We needed the upgrades to protect the athletes."

As it is with all sports, talent is also a key ingredient for success. The facility not only enhances training and safety, but is also be a very useful tool in recruiting.

"I think it puts us ahead of some schools in the facility race. When girls come to visit our facility they are impressed. They are able to look out and see the other athletic facilities,

and they are able to grasp the entire experience they are looking at if they choose to attend LSU.

"Young female athletes are coming to the realization across the spectrum that opportunities are out there for them. They can take scholarships and compete at the collegiate level. So I think maintaining a quality training environment is very important."



In-gym rehabilitation and conditioning area



LSU's 18,143 square foot practice facility



Pete Maravich ASSEMBLY CENTER

Paramount to the success of an intercollegiate program is a first-class facility and the Tigers have just that in the Pete Maravich Assembly Center.

For over a quarter century the "PMAC" has been home to some of the finest gymnastics competitions in the nation. The PMAC has served as the host site for three SEC Championships and eight NCAA Regional Championships and is scheduled to host the 2008 NCAA Central Regional Championships on April 12.

Seating 13,215 spectators, the massive \$11.5 million building has competed with neighboring Tiger Stadium as the most visible structure on the LSU campus since its completion in 1971.

Originally named, "The Assembly Center," in 1988 Louisiana Governor Buddy Roemer signed legislation changing the official name of the building to the Pete Maravich Assembly Center in honor of the former LSU basketball legend who had died earlier that same year.

The PMAC also serves as home to both the LSU men's and women's basketball teams, as well as the volleyball program.

In addition to the normal seating configuration, a proscenium stage can be lowered into place at the north end allowing some 4,500 seats for theatrical productions. An additional 1,000 seats can be placed on the floor for graduations, convocations, lectures, concerts or other special events.

Several renovations have recently been completed to keep the PMAC as one of the top facilities in the Southeastern Conference. A new multi-million dollar scoreboard/video replay system was installed in November 1999, the upper concourse was remodeled to include exhibits, displays and interactive kiosks documenting LSU sports history in the PMAC in 2004 and new seating was installed in 2006.

Top Gymnastics Attendance Figures in Maravich Center History

RANK	ATTENDANCE	OPPONENT	DATE	RESULT	SCORE
1.	5,076	Georgia	2/24/95	L	197.095-196.175
2.	4,170	Alabama	1/23/04	L	197.600-196.750
3.	4,155	Alabama	2/18/94	T	194.925-194.925
4.	4,122	Georgia	1/24/97	T	196.425-196.425
5.	4,088	Centenary	3/18/05	W	196.900-190.375
6.	4,022	Kentucky	1/23/98	W	194.975-192.775
7.	4,012	Georgia	2/11/05	W	196.375-195.525
8.	4,003	Florida	2/7/97	L	195.475-195.500
9.	3,932	Illinois-Chicago, N. Hampshire, W. Michigan	3/4/05	1st	196.175 (1st)
10.	3,764	Georgia	2/2/07	L	196.450-197.425
11.	3,646	Super Six Challenge	1/6/06	4th	193.900 (LSU)
12.	3,320	Florida	2/23/07	L	197.050-197.200
13.	3,248	Georgia	1/29/93	L	194.900-190.800
14.	3,048	Alabama	2/4/00	W	196.325-196.250
15.	3,012	NCAA Central Regional	4/2/04	1st	197.500 (LSU)
16.	2,918	Kentucky	3/5/94	W	192.250-191.425
17.	2,910	SEC Championships	3/21/98	3rd	196.450 (LSU)
18.	2,855	NCAA Central Regional	4/7/06	2nd	195.825 (LSU)
19.	2,796	Florida	3/3/95	L	195.650-195.500
20.	2,783	Illinois	1/19/07	W	193.850-193.300

- INTRO
- THIS IS LSU
- TIGERS
- COACHES
- REVIEW
- HISTORY
- RECORDS
- MEDIA



The newly renovated Maravich Center concourse contains exhibits and displays to document the histories of the sports that participate in the Maravich Center, as well as interactive kiosks.





AED

Athletic TRAINING

Rehabilitation

Graduate assistant athletic trainers monitor the health of LSU gymnasts in rehabilitation rooms.

LSU boasts the largest and most complete athletic training facilities in all of collegiate athletics with both the Operations Center and the Broussard Center for Athletic Training in Tiger Stadium. Both are furnished with the latest in technology and equipment. The Operations Center training room features a full view of the practice fields, two hot/cold jacuzzis and an underwater treadmill. The Broussard Center includes an on-site x-ray room, an in-house pharmacy, as well as the largest hydrotherapy pool in both collegiate and professional sports and is one of the few collegiate training centers with a full-service pharmacy and a full-service vision center.



Hydrotherapy Treatment

An integral part of rehabbing and developing LSU student-athletes is the operations center's hot/cold jacuzzis and underwater treadmill in a fully equipped Hydrotherapy room.

Broussard Athletic TRAINING CENTER



The two story, 22,000 square foot facility contains 20 treatment tables with the newest forms of modalities available, 14 taping stations, a 1,600 square foot rehabilitation area which contains the latest rehabilitation equipment including the Cybex Norm, Woodway treadmills and Body Master select rise equipment. LSU's multi-million dollar athletic training facility is named in honor of Dr. Martin J. Broussard (left), the legendary trainer whose career spanned over 40 years at LSU.





Strength & CONDITIONING

Strength and conditioning can be the heart and soul of an athletic program's success, and LSU has taken great strides to improve its strength program and facilities. LSU student-athletes enjoy one of the finest strength and conditioning facilities in the nation with a 10,000-square foot weight room located on the North side of Tiger Stadium. The weight room features the latest in both strength training and cardiovascular training equipment.

Amenities

- 28 multi-purpose power stations
- 36 assorted selectorized machines
- 10 dumbbell stations with two sets of 5-180 pound free weights
- Custom made equipment by Body Masters and Eleiko





Academic SUCCESS

Critical to the development of an athlete as a student is an adequate academic facility and capable staff to further the athlete's progress. The Cox Communications Academic Center for Student-Athletes is responsible for overseeing the educational development and progress toward graduation for all student-athletes. The staff acts as a liaison between the student-athlete and the academic communities and insures that student-athletes comply with academic rules established by the University, NCAA and Southeastern Conference.

The staff also coordinates academic programs designed to assist student-athletes in acquiring a quality education.

“The development of the student is as critical as the development of the athlete.”

LSU Head Coach, D-D Breaux

FACILITY BUILT BY THE TIGER ATHLETIC FOUNDATION



Academic Staff



Tomas Jimenez
Executive Director



Tommy Powell
Director of Academics



Jason Fountain
Director of Directed Studies



Dr. Tommy Karam
Director - Communications Lab



John Allen
Associate Director



Tim Boyle
Associate Director



Dr. Mary Boudreaux
Associate Director



Carole Walker
Associate Director



Leah Saal
Learning Specialist



Jennifer Timmer
Learning Specialist



Kristin Price
Learning Specialist



Rebecca Schwab
Tutorial Coordinator

2007 Academic All-Americans

Kristi Esposito
Lauren Klein
Amanda Morales
Kelly Phelan

2007 SEC Academic Honor Roll

Kristi Esposito
Sabrina Franceschelli (Freshman Academic Honor Roll)
Summer Hubbard (Freshman Academic Honor Roll)
Lauren Klein
Amanda Morales
Kelly Phelan
Lisa Rennie
Kayla Rogers (Freshman Academic Honor Roll)
Yvette Triay (Freshman Academic Honor Roll)

Academic Support

The goal is for each student-athlete to reach and receive the highest-quality education and degree. The responsibility of the academic center is to oversee the educational development and progress toward graduation for all student-athletes.

- > Tutoring
- > Career Counseling and Development
- > Comply with academic rules established by LSU, the NCAA and SEC
- > Time Management
- > Study Skills



- INTRO
- THIS IS LSU
- TIGERS
- COACHES
- REVIEW
- HISTORY
- RECORDS
- MEDIA



Bo Campbell Auditorium

The 1,000-seat auditorium is used through the year as a classroom and lecture hall. Each seat in the auditorium has space for a laptop and a modem hookup, providing each student unlimited learning opportunities. The auditorium also contains a movie theatre size screen to aid professors with lectures and classroom activities.

COX COMMUNICATIONS

Academic Center FOR STUDENT-ATHLETES

Study Area

Included in the 54,000 square feet of the Academic Center are individual study areas as well as 14 private computer rooms for student-athletes to work one-on-one with tutors or by themselves.





The Library

The library provides a perfect setting for individual study, or with a tutor as a group.

Computer Stations

Throughout the Academic Center are 300 computer stations, providing student-athletes with a quiet working environment for research, writing and studying.



A \$15 million renovation to the Gym Armory in 2002 not only made it among the nation's premier academic centers, but put it at the forefront. Improvements to the existing center give LSU student-athletes the best opportunity for success by providing access to the latest technology, as well as an array of expanded services.

Amenities

- ▶ 54,000 square feet of working space
- ▶ 300 computer workstations
- ▶ 14 private computer rooms in a state-of-the-art computer lab
- ▶ Additional study rooms and classrooms for private or group study
- ▶ Electronic scheduling of tutoring sessions
- ▶ A 1,000-seat auditorium for classes and lectures



Campus LIFE



Location: Baton Rouge, La.
Founded: January 2, 1860
Enrollment: 29,317
President: Dr. John V. Lombardi
Major Fields for Bachelor's Degrees: 72
Major Fields for Master's Degrees: 72
Major Fields for Doctoral Degrees: 54

Louisiana State University and Agricultural & Mechanical College has, throughout its 144-year history, served the people of Louisiana, the region, the nation, and the world. LSU is creating a revolution, one of pervasive change and advancement. For the past five years, the focus of the LSU community has been an increased commitment to excellence. Our progress has been dramatic and shows no sign of stopping.

Having witnessed many of yesterday's possibilities become today's tangible realities, the LSU community set forth to capitalize on its success. The goal was to improve our standing as a nationally competitive flagship university. Following intense discussions among the LSU Board of Supervisors, campus administrators, faculty, and student leaders, the objectives required to reach this status crystallized, providing the impetus for LSU's National Flagship Agenda.



The University lakes on the LSU campus give various recreational options.



CAMPUS APARTMENTS

The Tigers' Home Away From Home

LSU has 18 residence halls with architectural styles ranging from a Renaissance style typical of the older core of the campus to modern high-rise buildings. Above is the newest addition, the highly popular East Campus and West Campus apartments, co-ed dormitories that include furnished rooms with connecting suites and e-mail workstations in the lobby, all within a short walk from the dining hall.



Amenities

- ▶ Dining Halls
- ▶ Weekly Housekeeping
- ▶ Cable Television
- ▶ High-Speed Internet
- ▶ Mail Service
- ▶ Card Access
- ▶ Facility Repairs
- ▶ Security
- ▶ Telephone Services
- ▶ Furnished
- ▶ Washer/Dryer
- ▶ Microwave



Gymnastics IN THE COMMUNITY

Along with former LSU All-American and current Miami Heat star Shaquille O'Neal, several LSU athletic teams, including the gymnastics team, helped renovate a playground at local Polk Elementary.



The Tigers spent part of their Labor Day holiday volunteering at the 42nd annual Jerry Lewis Telethon for the Muscular Dystrophy Association. The team answered phones and took pledges to help the MDA raise a record \$63.8 million during the drive.



Working with Habitat for Humanity, the Tigers helped raise the foundation of a house destroyed by Hurricane Katrina in New Orleans' Ninth Ward.



This fall, the Tigers participated in the Down Syndrome Buddy Walk, a half-mile fun walk that was designed to promote awareness and give support to people with Down Syndrome.

Community OUTREACH

LSU gymnastics provides an opportunity to achieve athletic success while also getting a head start on the most important game of all - the game of life.

JOB EXPERIENCE

Student-athletes at LSU take full advantage of their summers by developing skills in their field of study. Gymnasts spend most of their summer participating in jobs that relate to their major, like working at ...

- ▶ Hospitals
- ▶ Physical therapy centers
- ▶ Public relations firms
- ▶ Building contractors
- ▶ Restaurant management
- ▶ Engineering firms
- ▶ Accounting offices



Shaquille O'Neal CHAMPS/Life Skills

“Through workshops, service projects, and social events, CHAMPS, brings LSU student-athletes information that will prepare them for the biggest game of all - the game of life!”

-SHAQUILLE O'NEAL, LSU ALL-AMERICAN & 13-TIME NBA ALL-STAR

The CHAMPS (Challenging Athletes Minds for Personal Success)/Life Skills program was developed by the NCAA to help prepare student-athletes for the challenges of life beyond the playing field.

How Can CHAMPS Help?

By focusing on "real life" skills and personal development, the CHAMPS Program not only assists the student-athletes with meeting daily challenges, but also enhances student-athlete's growth in their college years and beyond.

CHAMPS at LSU

The CHAMPS/Life Skills program at LSU is operated out of the Academic Center for Student Athletes, and the focus of the program is on five commitments viewed as critical to personal growth.



Mike Mallet
Director for the
CHAMPS/Life Skills program



Jade Jenkins
Assistant Director for the
CHAMPS/Life Skills program



The state capitol building of Louisiana, located in the heart of downtown Baton Rouge, is the tallest capitol building in the nation at 34 stories and overlooks the Mississippi River.

Baton ROUGE

Distance Chart from Baton Rouge (BASED ON 70 MPH SPEED):

Atlanta, Ga.	7 hours	Jackson, Miss.	2 ¹ / ₂ hours	New Orleans, La.	1 hour
Biloxi, Miss.	2 hours	Jacksonville, Fla.	8 ¹ / ₂ hours	Orlando, Fla.	10 hours
Birmingham, Ala.	6 hours	Little Rock, Ark.	5 hours	Pensacola, Fla.	4 hours
Dallas, Texas	6 ¹ / ₂ hours	Mobile, Ala.	3 hours	Shreveport, La.	4 hours
Houston, Texas	4 hours	Monroe, La.	2 ¹ / ₂ hours		

Hospitality and comfort are a Southern tradition practiced to perfection around Baton Rouge. Minutes from the city, ancient moss-draped oaks, fragrant honeysuckle, formal gardens and the finest examples of Southern architecture await. Combine this with the excitement of the mighty Mississippi River, Cajun music and a gourmet meal that is topped with freshly brewed cafe-au-lait at one of Baton Rouge's fine restaurants. So what does the future hold? Baton Rouge is now one of the fastest growing cities in the South -- a bustling Metropolis of cutting edge technology companies, high-powered law firms and forward thinking city leaders who passionately support the arts and promote the local economy. Old Man River just got an upgrade. Yes, this is one city that's rolling on the river.

Proximity

Baton Rouge is just an hour away from the French Quarter in New Orleans and even closer to the million-acre Atchafalaya Swamp, which is called one of the biggest fishing ponds in the country.





The Pelican State features the hustle and bustle of downtown New Orleans. Contrast that with the finest hunting, fishing and boating opportunities in the country making Louisiana the "Sportsman's Paradise".



Louisiana

THE PELICAN STATE



Louisiana, one of America's most culturally and geographically diverse states, is located in the heart of the Deep South. Adjacent to the Gulf of Mexico and dotted with hundreds of lakes and bayous, Louisiana is home to all types of terrain from swamps and marshes to lush forests and gentle hills.

◀ Unique Culture

Louisiana is home to Mardi Gras, a two-week party that includes more than 60 parades and millions of visitors from around the world. All year long New Orleans Jazz, Creole culture, stately riverboats and some of the finest cuisine in the world is mixed into the diverse and renowned culture of Louisiana.

Cuisine ▶

Foods like boiled crawfish, jambalaya, shrimp etouffee and gumbo make the cajun and creole cuisine of Louisiana the envy of the nation.



LSU ATHLETICS Championship TRADITION

2006-2007 IN REVIEW

Top Teams



Women's Basketball

The Lady Tigers advanced to the program's fourth straight NCAA Final Four with tournament victories over UNC Asheville, West Virginia, Florida State and top-seeded Connecticut. LSU also posted a 30-8 overall record in 2006-07 and went 10-4 in the SEC. The 30 wins marks the third straight season with at least 30 wins.



Gymnastics

The LSU gymnastics team maintained its presence among the nation's elite, finishing the season with a No. 7 national ranking after advancing to the National Championships for the 23rd time in program history. Individually, the Tigers had a school-record four athletes earn first-team All-America honors, while head coach D-D Breaux was named the NCAA Central Region Coach of the Year and Bob Moore was named the region's assistant coach of the year.

Football

The Tigers posted an 11-2 overall record and defeated Notre Dame in the 2007 Sugar Bowl. The victory was the third BCS bowl title for LSU, including the 2001 Sugar Bowl and the 2003 BCS National Title game in New Orleans. During the 2006 season, the Tigers recorded two wins over top 10 teams, including a 28-24 come-from-behind win at No. 8 Tennessee and a 31-26 win at No. 5 Arkansas.



Men's and Women's Track and Field

The LSU men's and women's track and field teams enjoyed an incredible season in 2007 under the direction of third-year head coach Dennis Shaver. The Lady Tigers were the NCAA runners-up during both the indoor and outdoor seasons, while the Tigers finished as the NCAA runner-up during the outdoor season in June. In addition, the LSU women won their first SEC Outdoor title since 1996 with a victory at the SEC Outdoor Championships in May.

2006-2007 IN REVIEW

Elite Athletes



Sherry Fletcher

WOMEN'S TRACK & FIELD

Sprinter Sherry Fletcher became the fourth Lady Tiger all-time to win an NCAA title in the 100-meter dash after clocking a personal best time of 11.20 seconds in the final to win gold at the 2007 NCAA Outdoor Track and Field Championships. She is now in select company as she joins Dawn Sowell (1989), Esther Jones (1990) and D'Andre Hill (1994, 1995) as the only NCAA champions in the 100 meters in the program's storied history.

Marina Skender

VOLLEYBALL

A two-time All-SEC selection, the junior outside hitter has helped lead the Tigers to back-to-back SEC Western Division titles and NCAA Tournament appearances. Skender led the conference and ranked sixth in the NCAA in service aces per game, while also recording a school record for attempts per game.

Killian Roessner

SOFTBALL

A first-team All-American in 2007, the catcher had the best season of her career. Roessner led the SEC with 19 runners caught stealing and tied for the league lead with four runners picked off. In addition to her outstanding play behind the plate, she hit .354 for the season with 15 doubles, six home runs and 36 RBIs.

Jared Bradford

BASEBALL

Junior right-hander Jared Bradford enjoyed an excellent 2007 season, as he was named second-team All-SEC and second-team ABCA All-South Region. He completed the season with a 10-4 mark, tying for the most victories among SEC pitchers. Bradford also led LSU with five saves, and he posted either a win or a save in 10 of LSU's 12 SEC victories.

Kelly Phelan

GYMNASTICS

Phelan finished her gymnastics career at LSU as a three-time All-American after earning first-team recognition on the beam and floor during her senior season. She was also named a Scholastic All-American as well as a Coca-Cola Community All-American.

Megan Falcon ▶▶

WOMEN'S TENNIS

Sophomore Megan Falcon notched an impressive 38-3 overall record in her first collegiate season. Ranked No. 2 in the country, Falcon was named an ITA All-American and SEC Player of the Year. She was also named ITA National Co-Player to Watch and Louisiana Newcomer and Player of the Year. She held a 28 match winning streak as she became the first player in women's tennis history to reach the NCAA semifinals.



- INTRO
- THIS IS LSU
- TIGERS
- COACHES
- REVIEW
- HISTORY
- RECORDS
- MEDIA

Danny Bryan

MEN'S TENNIS

Danny Bryan received ITA All-American and first-team All-SEC honors in 2007. He finished the season ranked No. 4 in doubles with partner Colt Gaston. Bryan and Gaston tallied an impressive 24-4 record on their way to the NCAA Doubles quarterfinals. Bryan represented the tennis team well in the community as he received the 2007 ITA/Arthur Ashe Jr. Award Leadership and Sportsmanship.

JaMarcus Russell

FOOTBALL

JaMarcus Russell departed LSU after his junior season and was the No. 1 pick of the 2007 NFL draft after having his most successful and productive season with the Tigers. The Mobile, Ala., native guided LSU to a 11-2 record, including a Sugar Bowl victory over Notre Dame. Russell threw for 3,129 yards and 28 touchdowns as a junior and guided the Tigers in two come-from-behind wins.

Julius Gloeckner

MEN'S SWIMMING & DIVING

Julius Gloeckner owns more school records than any other swimmer in school history and was a NCAA All-American in his first two seasons.

Hali Saucier

WOMEN'S SWIMMING & DIVING

Hali Saucier was the most decorated athlete at LSU academically. She was the SEC H. Boyd McWhorter Finalist, an NCAA Postgraduate Scholarship recipient and an ESPN Academic All-American. She also earned 2007 NCAA All-America honors and was the 2007 NCAA Regional 3-meter Champion.

Isa Phillips

MEN'S TRACK & FIELD

Hurdler Isa Phillips became the first LSU athlete since Billy Hardin in 1964 to win an NCAA title in the 400-meter hurdles as he won the event at the 2007 NCAA Outdoor Track and Field Championships. His time of 48.51 seconds in the final shattered his previous personal best and moved him into the No. 2 spot on the school's all-time performance list.

Sylvia Fowles ▶▶

WOMEN'S BASKETBALL

As a junior, Sylvia Fowles earned Kodak and John R. Wooden Award All-America honors as well as first-team honors from ESPN.com and the USBWA. The 6-6 center helped guide the Lady Tigers to a fourth straight NCAA Final Four appearance and a 30-8 record in 2006-07 and averaged 16.9 points and 12.6 rebounds, earning first-team All-SEC honors as well.

Glen Davis

MEN'S BASKETBALL

Glen Davis earned first-team All-SEC honors after leading the team in scoring with 17.7 points and rebounding with 10.4 per game.

Melissa Eaton

WOMEN'S GOLF

Melissa Eaton led LSU in stroke average for the second straight year. She completed her third straight season with a 75 stroke average to help guide the Lady Tigers to the NCAA Regional.

Chelsea Potts

SOCCER

Defender Chelsea Potts established herself as one of the top young center backs in the country with her play during the 2006 season. Potts became the first Tiger to receive All-America recognition as she was named a Soccer Buzz Second-Team Freshman All-American following the season, while she was also named second-team All-SEC and a member of the SEC All-Freshman Team.



Chris Wells ▲

MEN'S GOLF

Chris Wells capped a stellar career in the purple and gold in 2007 as he earned All-SEC recognition for the second time after leading the Tigers with a 73.0 stroke average for the season. He was also a three-time first-team All-Louisiana selection by the Louisiana Sports Writer's Association, as well as a two-time member of the PING All-Southeast Region Team during his career.



43 National Team Championships

Men's Basketball (1)	1935
Boxing (1)	1949
Football (2)	1958, 2003
Men's Golf (4)	1940, 1942, 1947, 1955
Men's Indoor Track (2)	2001, 2004
Women's Indoor Track (11)	1987, 1989, 1991, 1993, 1994, 1995, 1996, 1997, 2002, 2003, 2004
Men's Outdoor Track (4)	1933, 1989, 1990, 2002
Women's Outdoor Track (13)	1987, 1988, 1989, 1990, 1991, 1992, 1993, 1994, 1995, 1996, 1997, 2000, 2003
Baseball (5)	1991, 1993, 1996, 1997, 2000

110 SEC Team Championships

Baseball (13)	1939, 1943, 1946, 1961, 1975, 1986, 1990, 1991, 1992, 1993, 1996, 1997, 2003
Men's Basketball (9)	1935, 1953, 1954, 1979, 1981, 1985, 1991, 2000, 2006
Women's Basketball (2)	2005, 2006
Football (10)	1935, 1936, 1958, 1961, 1970, 1986, 1988, 2001, 2003, 2007
Men's Golf (15)	1937, 1938, 1939, 1940, 1942, 1946, 1947, 1948, 1953, 1954, 1960, 1966, 1967, 1986, 1987, 1992
Women's Golf (1)	1981
Gymnastics (1)	1988
Men's Swimming (1)	1976, 1985, 1998, 1999
Men's Tennis (4)	1957, 1963, 1989, 1990
Men's Indoor Track (4)	1985, 1987, 1988, 1989, 1991, 1993, 1995, 1996, 1998, 1999
Women's Indoor Track (10)	1933, 1934, 1935, 1936, 1938, 1939, 1940, 1941, 1942, 1943, 1946, 1947, 1948, 1951, 1957, 1958, 1959, 1960, 1963, 1988, 1989, 1990
Men's Outdoor Track (22)	1985, 1987, 1988, 1989, 1990, 1991, 1993, 1996, 2007
Women's Outdoor Track (9)	1999, 2000, 2001, 2002, 2004
Softball (5)	1986, 1989, 1990, 1991
Volleyball (4)	

Overall Men's

NCAA Championships	
1. UCLA	100
2. Stanford	94
3. USC	84
4. Abilene Christian	50
4. Kenyon	50
6. Oklahoma State	48
7. LSU	43
7. Arkansas	43
9. Texas	39
10. College of New Jersey	37

Overall Women's

NCAA Championships	
1. Stanford	35
2. College of New Jersey	31
3. UCLA	29
4. LSU	24
5. Kenyon	23

LSU GREATS

The five individuals on this page are the only men to have their jerseys retired by LSU. Basketball has retired the No. 23 for Pete Maravich, No. 50 for Bob Pettit, Jr., and No. 33 for Shaquille O'Neal. Football's only retired jersey is the No. 20 worn by Billy Cannon, while baseball retired the No. 15 in honor of longtime coach and current athletics director Skip Bertman.



50

Bob Pettit

Led LSU to its first NCAA Final Four in 1953 and he later became the first player in NBA history to exceed the 20,000-plus point barrier. Pettit is a member of the NBA Hall of Fame and in 1997 he was named as one of the top 50 players in NBA history.



20

Billy Cannon

One of the true legends of college football in the South, Cannon was the 1959 Heisman Trophy winner and helped the Tigers to the 1958 national title. Cannon's most memorable performance came in 1959 against Ole Miss when No. 1 LSU trailed No. 3 Ole Miss 3-0 in the fourth quarter. He fielded a punt, broke seven tackles and returned it 89 yards for the 7-3 victory. He went on to a successful 11-year professional career.



23

Pete Maravich

"Pistol Pete," Maravich still holds the NCAA record for career points with 3,667 and for career scoring average with 44.2 points a game. He was selected the National Player of the Year in 1970 after leading the Tigers to the NIT Final Four. He scored 50+ points an amazing 28 times. He went on to a 10-year professional career and was selected as one of the NBA's 50 greatest players in 1997.



33

Shaquille O'Neal

Was the first pick in the 1992 NBA Draft. He was named MVP of the league in 2000 and was a three-time NBA Finals MVP after leading the Los Angeles Lakers to three World Championships. At LSU, O'Neal averaged 21.6 points and 13.6 rebounds for his career, and in 1991, he was named the World's Amateur Athlete of the Year as well as SEC Athlete of the Year and National Player of the Year. In 1997, he was named as one of the top 50 players in NBA history.



15

Skip Bertman

A legend in the college baseball ranks, Bertman created a dynasty at LSU, guiding the Tigers to five national titles in a 10-year stretch from 1991-2000. He also skipped the United States to a bronze medal at the 1996 Olympics in Atlanta and was an assistant on the gold medal-winning U.S. squad in Seoul, Korea in 1988. Bertman retired from coaching following the 2001 season and is currently the LSU athletics director. Bertman was inducted into the College Baseball Hall of Fame in 2006.

LSU's Success in each of its 20 sports is evident with this outstanding list of former Tigers.

- INTRO
- THIS IS LSU
- TIGERS
- COACHES
- REVIEW
- HISTORY
- RECORDS
- MEDIA



Seimone Augustus

Augustus was the two-time NCAA National Player of the Year, receiving the Wade Trophy, the Naismith and the Wooden Awards as a junior and a senior. Augustus helped lead the Lady Tigers to three straight Final Fours and was the NCAA Regional MOP three times. She was the No. 1 draft pick in the 2006 WNBA draft.



Nicki Arnstad

The 2002 NCAA floor exercise co-champion, Arnstad became the first LSU gymnast to win an NCAA title. She was a two-time All-American and also won the NCAA Central Regional floor and all-around Championships.



April Burkholder

The 2006 NCAA beam co-national champion. Finished her career with 14 All-America honors and four All-SEC selections. In addition, she was named the NCAA Central Region Gymnast of the year twice (2004, 2005), the SEC Gymnast of the Year on two occasions (2004 and 2005) and was also the conference's Freshman of the Year in 2003.



Xavier Carter

Carter won a school record-tying seven NCAA titles on the track and earned a total of 10 All-America honors. He became just the second athlete to win four titles at one national meet, joining Jesse Owens. Holds four individual school records and anchored LSU's 4x400-meter relay teams to two school records.



Walter Davis

A two-time Olympian and World Champion, Davis helped LSU to national titles in 2001 and 2002. The SEC Male Athlete of the Year in 2002, he won six NCAA titles and earned a school-record nine All-America honors.



Meredith Duncan

The nation's top collegiate golfer in 2002, Duncan left LSU as the school's best female golfer. She earned first-team All-America honors as a senior in 2002 and won the United States Women's Amateur Championship in 2001.



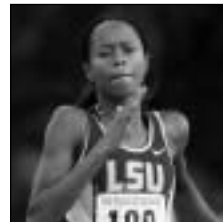
Temeka Johnson

The 2004-05 Lieberman Award winner as the nation's top point guard, Johnson led the Lady Tigers to back-to-back NCAA Final Fours, the 2004-05 SEC regular season title and the 2003 tournament title, and was the SEC's all-time assist leader, finishing her career fifth in NCAA history with 945.



Esther Jones

A 21-time All-American while at LSU, Jones won a gold medal as a member of the United States' 4x100-meter relay team at the 1992 Olympic Games in Barcelona.



Muna Lee

The most decorated track and field athlete in school history, Lee won 20 All-America awards and a school record seven national titles while helping the Lady Tigers to five NCAA team championships during her time at LSU. A 2004 Olympian, she finished seventh in the 200 meters at the Summer Games in Athens, Greece.



Ben McDonald

Named the Golden Spikes National Player of the Year in 1989 and he was later the first player chosen in the Major League Baseball Draft by the Baltimore Orioles.



David Toms

The two-time SEC Player of the Year, Toms has gone on to a successful career on the PGA Tour. Among his PGA Tour victories was a thrilling win at the PGA Championship in August of 2001.



Todd Walker

Capped his LSU career as the SEC's all-time leader in hits, runs, RBIs, and total bases. Walker, who is a member of the All-Time College World Series Team, led LSU to the national title in 1993.



Shaquille O'Neal

Four-time NBA champion, including the 2006 title with Miami, Shaquille O'Neal, the 2000 NBA MVP, joined the long list of prominent LSU alumni when he earned his degree in general studies in December 2000.



Seimone Augustus

Received her degree in 2005 after just three years at LSU and while earning NCAA Women's Basketball National Player of the Year honors twice. The first pick of the 2006 WNBA draft by the Minnesota Lynx.



Prominent LSU ALUMNI



Eduardo Aguirre, Jr.

Named the first Director of U.S. Citizenship and Immigration Services (USCIS) for the Department of Homeland Security in 2003, Aguirre, Jr., was appointed the U.S. Ambassador to Spain in 2005.



Kevin Faulk

Excelled in both the classroom and on the playing field as he graduated in just three years. Faulk is currently a member of the three-time Super Bowl Champion New England Patriots.



Dr. James Andrews

A world-renowned orthopedic surgeon. Andrews is a 1963 graduate of LSU and a 1967 graduate of LSU Medical School. While at LSU, Andrews won the SEC indoor and outdoor titles in the pole vault.



Carlos Roberto Flores

The president of Honduras from 1997-2001, Flores helped the nation recover after Hurricane Mitch devastated the country in 1998. Flores is married to the former Mary Carol Flake, also an alumnus of LSU.



Lod Cook

Graduated from LSU with a bachelor's degree in Mathematics in 1955 and then earned his Master's degree in Petro Engineering in 1955. Cook served as CEO of ARCO for nine years.



Jim Flores

Graduated with two LSU bachelors of science degrees; one in Corporate Finance in 1981 and the second in Petroleum Land Management in 1982. Flores is currently Chairman, President and CEO of Plains Exploration & Production Company

LSU's enrollment is more than 29,000 students, including more than 1,600 international students and nearly 5,000 graduate students.

- INTRO
- THIS IS LSU
- TIGERS
- COACHES
- REVIEW
- HISTORY
- RECORDS
- MEDIA

Dr. Larry O. Arthur - AIDS researcher.

John Ed Bradley - Sports Illustrated writer and novelist.

John Breaux - U.S. Senator (1987-2005) and U.S. Congressman (1972-86) from Louisiana.

Wil Calhoun - Executive Producer of television sitcom "Friends".

Cassandra Chandler - One of the Federal Bureau of Investigation's highest ranking African-American women as special agent in charge of the Norfolk Field office.

"Lightning Joe" Lawton Collins - Chief of Staff for President Harry Truman.

Bill Conti - Oscar-winning composer who has written theme music for several well-known movies, including "Rocky" and its sequels.

Eric Arturo Delvalle - President of Panama (1985-1988).

A. Wright Elliott - Retired executive vice president, Chase Manhattan Bank.

Graves Erskine - U.S. Marine Corps General in WWII.

Maxime A. Faget - Designed Mercury and Gemini spacecrafts.

Mary Carol Flake Flores - Former first lady of Honduras.

Murphy "Mike" Foster, Jr. - Former governor of Louisiana (1996-2004).

Kevin Griffin - Lead singer of the platinum-selling rock band "Better than Ezra"

Paul Groves - Award-winning tenor with the Metropolitan Opera

Rufus William (Bill) Harp - Television set decorator for series including "L.A. Law" and "Moonlighting"

Pat Hewlett - CIO of Exxon Mobil.

Walter Hitesman - Former president, Reader's Digest.

Hubert Humphrey - U.S. vice president (1965-69).

W. Vernon Jones - Senior Scientist for Suborbital Research, NASA headquarters.

Delos "Kip" Knight - Vice president of marketing and brand management for eBay international.

Russell Long - U.S. Senator from Louisiana (1948-87).

Ray Marshall - Secretary of Labor under President Jimmy Carter.

James E. Maurin - Founding partner and CEO of Stirling Properties, a national real estate services firm.

Grover Murray - Former president of Texas Tech University.

Jake Lee Netterville - Chairman of the board of Postlethwaite and Netterville, the largest Louisiana-based public accounting firm.

Edwin Newman - Longtime NBC News journalist and author.

Carolyn Bennett Patterson - Former senior editor, National Geographic.

J. Howard Ramin - Former CEO and Chairman of the Board, Texaco.

Rex Reed - Drama critic, syndicated columnist.



Kenneth Brown

A 1995 graduate of LSU and the host of Home and Garden Television's (HGTV) show "redesign", Brown credits much of his success to LSU's interior design program, which is ranked among the top 10 nationally. Brown's show completed its first season in 2005, and HGTV plans to air 65 more episodes.

Maj. Gen. Thomas Rhame - Led 1st Infantry Division against Iraq during Persian Gulf War.

Thomas O. Ryder - Chairman of the Board, The Reader's Digest Association.

Frances Seghers - Senior VP of Sony Entertainment European Community Affairs, which includes Sony Music, Sony Pictures and Sony Playstation.

Dolores Spikes - Former President of the Southern University System and the University of Maryland-Eastern Shore.

Ray Strother - Author, political consultant.

David Suarez - Co-owner of Atlantic Company of America, Inc., which performed the historic restoration of the Washington Monument, the Smithsonian's Air and Space Museum and the main U.S. Treasury Building.

Rebecca Wells - Author of the novel and film "Devine Secrets of the Ya-Ya Sisterhood."

Joanne Woodward - Academy Award-winning actress and wife of Paul Newman.



Reinosuke Hara

Researched at LSU in the 1950s and then later received an honorary Doctorate of Science degree from LSU in 1992. Former President and CEO of Seiko Instruments.



Mary L. Landrieu

Became the first woman from Louisiana elected to a full term in the United States Senate in 1997.



Harry J. Longwell

Graduated from LSU in 1963 with a Bachelor's degree in petroleum engineering and retired in 2004 as the Executive Vice President and Director of of ExxonMobil.



Eddie J. Jones

Former President of the NFL's Miami Dolphins franchise, the 37-year veteran of the NFL is currently a Trustee of the Bert Bell/Pete Rozelle Retirement and Disability Plan.



Marty Sixkiller

Senior Technical Director for PDI/DreamWorks' movies "Antz," "Shrek," "Shrek 2," "Shrek the Third," "Madagascar" and "Over the Hedge".



James Carville

Received both a Bachelor's degree and Law degree from LSU. Carville gained fame in the 1990s as the chief campaign strategist for Bill Clinton and Al Gore. Carville also penned a best-selling memoir titled "All's Fair: Love, War and Running for President".

- INTRO
- THIS IS LSU
- TIGERS
- COACHES
- REVIEW
- HISTORY
- RECORDS
- MEDIA



Dr. John V. Lombardi

President, Louisiana State University System



John V. Lombardi is President of the Louisiana State University System and professor of history at LSU Baton Rouge.

He also serves as co-editor of The Center's Top American Research Universities project on measuring university performance. Dr. Lombardi served as dean of international programs and dean of arts and sciences at Indiana University, provost at The Johns Hopkins University, president of the University of Florida, and chancellor of the University of Massachusetts Amherst. He is a specialist in Latin America with a special interest in Venezuelan history, and the author of a variety of books and articles, one of which is coauthored with his wife, Cathryn. He received his Ph.D. and MA from Columbia University and his bachelor's degree from Pomona College.



Dr. John Lombardi addresses the LSU Board of Supervisors at his introductory Board meeting on July 13, 2007.

LSU Board of Supervisors



Dr. Jack A. Andonie
Metairie, La.
District 1



Tony Falterman
Napoleonville, La.
District 3



Dr. John George
Shreveport, La.
District 4



Hank Gowen, Jr.
Shreveport, La.
District 4



Hal Hinchliffe
Monroe, La.
District 5



Stanley J. Jacobs
New Orleans, La.
District 1



Alvin Kimble
Baton Rouge, La.
District 6



Louis Lambert
Prairieville, La.
District 6



Laura A. Leach
Lake Charles, La.
District 7



Ben W. Mount
Lake Charles, La.
Member at Large



Dorothy "Dottie" Reese
New Orleans, La.
District 2



James P. Roy
Lafayette, La.
District 7



Jerry E. Shea, Jr.
Chairman-Elect
New Iberia, La.
District 3



Charles S. Weems III
Alexandria, La.
District 5



Rod West
Chairman
New Orleans, La.
District 2



Cassie Alsfield
Baton Rouge, La.
Student Representative



Sean O'Keefe

Chancellor, LSU



The Honorable Sean O'Keefe assumed the office of Chancellor of Louisiana State University and A&M College on February 21, 2005. Prior to his appointment as LSU's seventh chancellor, O'Keefe established a distinguished career in higher education and United States government service.

Chancellor O'Keefe earned his Bachelor of Arts from Loyola University in New Orleans in 1977 and his Master of Public Administration from the Maxwell School of Syracuse University in 1978. He held an endowed chair at the Syracuse University Maxwell School of Citizenship and Public Affairs and served as the Director of National Security Studies, a partnership of Syracuse University and Johns Hopkins University for delivery of executive education programs. He was also Professor of Business Administration and Assistant to the Senior Vice President for Research and Dean of the Graduate School at the Pennsylvania State University.

He served on four separate occasions as a presidential appointee. Most recently, until February 2005, he served as the 10th Administrator of the National Aeronautics and Space Administration. O'Keefe joined President George W. Bush's Administration as Deputy Assistant to the President and as the Deputy Director of the Office of Management and Budget until December 2001.

Appointed Secretary of the Navy in July 1992 by President George Bush, O'Keefe served as Comptroller and Chief Financial Officer of the Department of Defense since 1989. Before joining then-Defense Secretary Dick Cheney's Pentagon management team in these capacities, he served on the United States Senate Committee on Appropriations staff for eight years and was Staff Director of the Defense Appropriations Subcommittee. His public service began in 1978 upon his selection as a Presidential Management Intern.

Chancellor Sean O'Keefe is a Fellow of the National Academy of Public Administration, a Fellow of the International Academy of Astronautics, and member of the Naval Postgraduate School Board of

Advisors. During his academic postings, he was a Visiting Scholar at the Wolfson College of the University of Cambridge in the United Kingdom, a member of the Naval Postgraduate School's civil-military relations seminar team, and conducted seminars for the Strategic Studies Group at Oxford University. He served on the national security panel to devise the 1988 Republican platform and was a member of the 1985 Kennedy School of Government program for national security executives at Harvard University.

In 1993, President Bush and Secretary Cheney presented him the Distinguished Public Service Award. He was the 1999 faculty recipient of the Syracuse University Chancellor's Award for Public Service; recipient of the Department of the Navy's Public Service Award in December 2000; and has been awarded five honorary doctorate degrees from several prestigious educational institutions. In 2003 and 2004, he was recognized and honored by the Irish American Magazine as one of the Top 100 Irish Americans.

Chancellor O'Keefe was named recipient of the Potomac Institute for Policy Studies' 2005 Navigator Award and received the 2005 Honorary Engineer of the Year Award from the Engineer's Council. He was inducted into the Louisiana Political Hall of Fame in January 2007.

He is the author of several journal articles and contributing author of *Keeping the Edge: Managing Defense for the Future* released in October 2000. In 1998, he co-authored *The Defense Industry in the Post-Cold War Era: Corporate Strategies and Public Policy Perspectives*.

He is married to Laura McCarthy O'Keefe, and they have three children - Lindsey, Jonathan, and Kevin.



Dydia DeLyser

Faculty Athletics Representative

Dydia DeLyser, an associate professor in the Department of Geography and Anthropology, begins her first year as LSU's Faculty Athletics Representative.

DeLyser, a native of Santa Monica, Calif., received a bachelor's degree in 1992 from UCLA and earned her master's and doctoral degrees from Syracuse University.

DeLyser arrived at LSU in August 1998 as an instructor before becoming an assistant professor one year later. She was designated as an associate professor in August 2005.

In terms of her research, DeLyser is a cultural-historical geographer. Her work has been both ethnographic and historical, and most of it has been about how landscapes help make the past meaningful in the present.

Most of her published research has focused on two different studies. One was a many-year ethnographic study of a ghost town in California where she examined how images and ideas about the American mythic West became meaningful to the tourists who visited the town. The second

was as historical study that examined a 19th century novel and how it changed the way people understood (and still understand) southern California's past.

Her current research concerns early women aviators and how they used their practices of flying to advance feminism in the post-suffrage era.

DeLyser teaches graduate courses in cultural geography, qualitative research, and academic and professional writing. She also teaches undergraduate courses in cultural, feminist, and urban geography, and an introductory world-regional geography course.

DeLyser is a first-generation American - her parents were Dutch immigrants - and English is actually her second language. She also has language abilities in Russian and Spanish.

DeLyser's hobbies include driving/riding antique cars and motorcycles. She is also a licensed pilot and co-owns a Citabria, which is a two-seat aerobatic airplane.

INTRO

THIS IS LSU

TIGERS

COACHES

REVIEW

HISTORY

RECORDS

MEDIA

INTRO

THIS IS LSU

TIGERS

COACHES

REVIEW

HISTORY

RECORDS

MEDIA



The Bertman Coaching **LEGACY**

Skip Bertman's unyielding desire to succeed drove him to the pinnacle of his profession, and his astute knowledge of the game -- obtained from over 40 years of coaching -- combined with his steadfast determination and irrepressible enthusiasm transformed LSU Baseball into the nation's premier program. Bertman has been inducted into the College Baseball Hall of Fame, the Louisiana Sports Hall of Fame and the American Baseball Coaches Association Hall of Fame.

National Championships

2000, 1997, 1996, 1993, 1991

SEC Championships

1997, 1996, 1993, 1992, 1991, 1990, 1986

Career Record (1984-2001)

870-330-3 (.724)

NCAA Tournament Record

89-29 (.754), highest winning percentage in NCAA history

National Coach of the Year

2000, 1997, 1996, 1993, 1991, 1986

College World Series Appearances

2000, 1998, 1997, 1996, 1994,
1993, 1991, 1990, 1989, 1987, 1986

A Louisiana Legend and one of the greatest college baseball coaches of all time, J. Stanley "Skip" Bertman has made the seamless transition into the athletics director's chair with the same enthusiasm, vision and demand for excellence that were trademarks of his stellar coaching career.

The 2007-08 season will mark Bertman's final year as LSU athletics director. After his tenure ends on June 30, 2008, he will remain at LSU as athletics director emeritus through 2010, working as a vital fund-raiser for the university.

In six years as LSU's director of athletics, Bertman has added to his impressive list of on-the-field achievements. Under his direction, LSU has enjoyed arguably the greatest athletics seasons in the history of the institution.

The 2006-07 season saw 12 LSU teams finish among the nation's top 25, including a No. 3 final ranking for the football team and a fourth consecutive Final Four appearance by the women's basketball squad. The LSU men's and women's track and field teams each finished No. 2 in the nation.

In 2005-06, LSU joined North Carolina (1997-98) as the only schools to have their football, men's basketball and women's basketball teams all finish in the nation's Top 5. LSU in 2005-06 also became the first school in SEC history to win outright league championships in men's and women's basketball in the same season.

In 2004-05, 14 LSU teams advanced to the post-season, and in 2003-04, three teams won national championships, nine teams finished in the nation's top ten, and fourteen teams ranked in the top 25.

Under Bertman's direction, LSU teams have also recorded improved grade point averages across the board, making the student-athlete experience a success on and off the fields of competition.

While supervising the Tigers' progress on the playing fields, he has implemented measures necessary to realize his vision of building the LSU athletics department into the best in the country. Bertman's bold and innovative plans promise to keep the Tigers among the nation's elite in all phases of collegiate athletics.

Bertman is now in the midst of upgrading LSU's athletics complex, as he took the bold but essential move to implement a seat contribution program in Tiger Stadium to fund facility improvements and ensure the financial stability of the LSU Athletics Department for the next decade.

Working hand in hand with the Tiger Athletic Foundation, Bertman has already overseen the completion of the Cox Communications Academic Center for Student-Athletes, the renovation of Tiger Stadium and the Pete Maravich Assembly Center, and the construction of the Football Operations Center.

In addition, state-of-the-art baseball and softball stadiums are scheduled to be constructed by the fall of 2008, and a basketball practice facility will be in place by 2009.

Bertman was named LSU's athletics director on January 19, 2001. With Bertman, LSU gained an athletics director who provides the leadership and experience necessary to manage the Tigers' budget of over \$50 million.

Bertman guided LSU to five NCAA baseball titles during his 18-year coaching tenure (1984-2001), and his teams drew huge crowds to venerable Alex Box Stadium, as the Tigers led the nation in attendance in each of his final six seasons.

He also served as head coach of the 1996 U.S. Olympic team which captured the bronze medal in Atlanta.

Bertman continues to be honored for his remarkable coaching tenure, as he was inducted in June, 2006 into the new College Baseball Hall of Fame as part of the hall's inaugural class. He has also been inducted into the Louisiana Sports Hall of Fame and the American Baseball Coaches Association Hall of Fame.

In a *Baseball America* poll published in 1999, Bertman was voted the second greatest college baseball coach of the 20th century, trailing only Rod Dedeaux of Southern California. Bertman, Dedeaux and Augie Garrido of Texas are the only coaches to win five CWS titles.

Bertman had previously earned recognition as one of the nation's brightest assistant coaches while at the University of Miami (Fla.) for eight seasons (1976-83). Before working at Miami, Bertman was renowned for his coaching excellence. In 11 seasons at Miami Beach High School, he directed the Hi-Tides to a state championship and two runners-up finishes and he was named Florida's Coach of the Year on three occasions.

In 1975, Bertman coached at Miami-Dade Downtown, leaving after one season to join legendary head coach Ron Fraser at Miami. The move was a homecoming of sorts, as Bertman spent his collegiate playing days with the Hurricanes as an outfielder and catcher from 1958-60. He earned his B.A. in health and physical education from Miami in 1961 and received his master's degree from UM in 1964.

Bertman and his wife Sandy are the parents of four daughters - Jan, Jodi, Lisa and Lori. The Bertmans have four grandchildren - Sophie Faith and Isaac Stanley, the children of Emile and Lori Bertman Guirard; and Samuel Aaron and Ezra Michael, the sons of Drew and Lisa Bertman Pate.