

This is LSU

2006 LSU GYMNASTICS MEDIA GUIDE

INTRO

THIS IS LSU

TIGERS

COACHES

REVIEW

HISTORY

RECORDS

MEDIA

When determining what makes an athletic program successful, many elements factor in. Ask any coach and they will say that quality facilities rank among the most important elements.

The LSU Gymnastics team and head coach D-D Breaux moved into the newly renovated gymnastics training area in the LSU Field House in the Fall of 2000 and immediately reaped the benefits of one of the finest training facilities in the nation.

"It's a dream come true. It's a realization that the commitment by the university, fans and boosters really is all about the student-athlete," said Breaux.

The LSU Field House renovations and expansion created a brand new facility, that includes a locker room, squad room, 18,143 square feet of training space – double the previous space – an equipment room, sauna, sound room and conditioning/aerobic room.

One of the nicest aspects of the facility is the glass wall that allows an onlooker to see the multi-million dollar Bernie



The vaulting, tumble track, and drill area overlook the Bernie Moore Track Stadium.

"When girls come to visit our facility they will be impressed. They will be able to look out and see the other athletic facilities, and they will be able to grasp the entire experience they are looking at if they choose to attend LSU."

— HEAD COACH D-D BREUX



INTRO
THIS IS LSU
TIGERS
COACHES
REVIEW
HISTORY
RECORDS
MEDIA



Aerobic exercise and conditioning area

Moore Track Stadium, legendary Tiger Stadium, the Pete Maravich Assembly Center – the competitive home of the LSU gymnastics team – and the beautiful landscaping of LSU's campus.

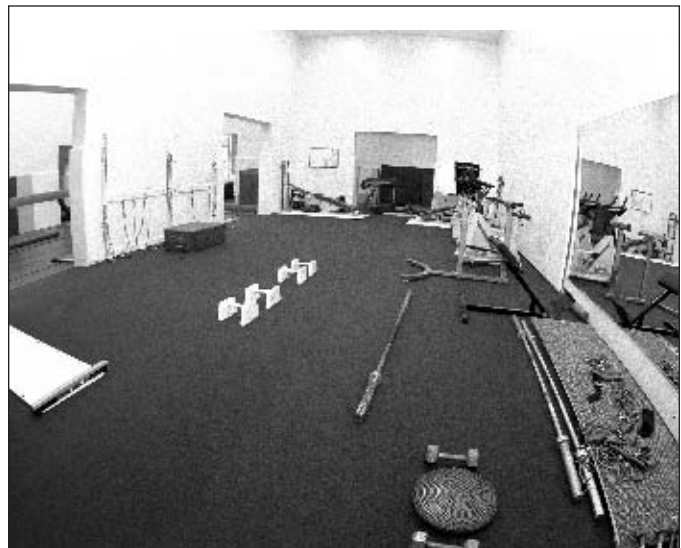
D-D Breaux started to fathom ideas of a new facility years ago, never thinking that one day dreams would turn into realities under her tenure.

"About 10 years ago I started thinking about this idea, and about five years ago I started talking about it. Eventually, (former athletic director) Mr. (Joe) Dean and some board members along with the Tiger Athletic Foundation started listening. They realized that we needed it not only to maintain our top 10 status, but it was also a safety issue. We needed the upgrades to protect the athletes."

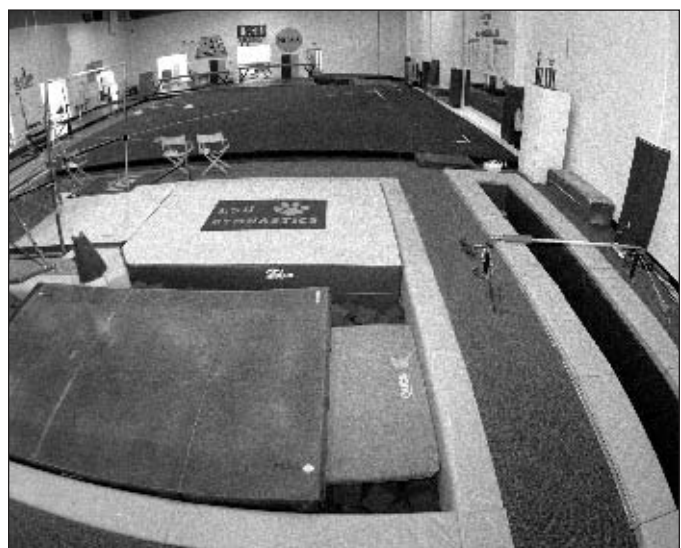
As it is with all sports, talent is also a key ingredient for success. A new facility not only enhances training and safety, but is also be a very useful tool in recruiting.

"I think it puts us ahead of some schools if there is a facility race. When girls come to visit our facility they will be impressed. They will be able to look out and see the other athletic facilities, and they will be able to grasp the entire experience they are looking at if they choose to attend LSU.

"Young female athletes are coming to the realization across the spectrum that opportunities are out there for them. They can take scholarships and compete at the collegiate level. So I think this project and other things of this sort are very important."



In-gym rehabilitation and conditioning area



LSU's 18,143 square foot practice facility

INTRO

THIS IS LSU

TIGERS

COACHES

REVIEW

HISTORY

RECORDS

MEDIA



Paramount to the success of an intercollegiate program is a first-class facility and the Tigers have just that in the Pete Maravich Assembly Center.

For over a quarter century the "PMAC" has been home to some of the finest gymnastics competitions in the nation. The PMAC has served as the host site for three SEC Championships, seven NCAA Regional Championships and is set to host the Super Six Challenge and NCAA Central Regional Championships in 2006.

Seating 13,373 spectators, the massive \$11.5 million building has competed with neighboring Tiger Stadium as the most visible structure on the LSU campus since its completion in 1971.

Originally named, "The Assembly Center," in 1988 Louisiana Governor Buddy Roemer signed legislation changing the official name of the building to the Pete Maravich Assembly Center in honor of the former LSU basketball legend who had died earlier that same year.

The PMAC also serves as home to both the LSU men's and women's basketball teams, as well as the volleyball program.

In addition to the normal seating configuration, a proscenium stage can be lowered into place at the north end allowing some 4,500 seats for theatrical productions. An additional 1,000 seats can be placed on the floor for graduations, convocations, lectures, concerts or other special events.

Several renovations have recently been completed to keep the PMAC as one of the top facilities in the Southeastern Conference. A new multi-million dollar scoreboard/video replay system was installed in November 1999, the upper concourse was remodeled to include exhibits, displays and interactive kiosks documenting LSU sports history in the PMAC in 2004 and new seating was installed this year.

- INTRO
- THIS IS LSU
- TIGERS
- COACHES
- REVIEW
- HISTORY
- RECORDS
- MEDIA

Top Gymnastics Attendance Figures in Maravich Center History

RANK	ATTENDANCE	OPPONENT	DATE	RESULT	SCORE
1.	5,076	Georgia	2/24/95	L	197.095-196.175
2.	4,170	Alabama	1/23/04	L	197.600-196.750
3.	4,155	Alabama	2/18/94	T	194.925-194.925
4.	4,122	Georgia	1/24/97	T	196.425-196.425
5.	4,088	Centenary	3/18/05	W	196.900-190.375
6.	4,022	Kentucky	1/23/98	W	194.975-192.775
7.	4,012	Georgia	2/11/05	W	196.375-195.525
8.	4,003	Florida	2/7/97	L	195.475-195.500
9.	3,932	Illinois-Chicago, N. Hampshire, W. Michigan	3/4/05	1st	196.175 (1st)
10.	3,248	Georgia	1/29/93	L	194.900-190.800
11.	3,048	Alabama	2/4/00	W	196.325-196.250
12.	3,012	NCAA Central Regional	4/2/04	1st	197.500 (LSU)
13.	2,918	Kentucky	3/5/94	W	192.250-191.425
14.	2,910	SEC Championships	3/21/98	3rd	196.450 (LSU)
15.	2,796	Florida	3/3/95	L	195.650-195.500
16.	2,566	Ohio State	3/5/04	W	197.525-195.600
17.	2,519	Alabama, Penn State	3/6/98	2nd	195.475 (LSU)
18.	2,460	Auburn	1/21/94	W	190.700-189.900
19.	2,365	Centenary, Texas Woman's	1/30/04	1st	196.500 (LSU)
20.	2,193	Auburn	2/27/04	W	197.525-195.600



The newly renovated Maravich Center concourse contains exhibits and displays to document the histories of the sports that participate in the Maravich Center, as well as interactive kiosks.



- INTRO
- THIS IS LSU**
- TIGERS
- COACHES
- REVIEW
- HISTORY
- RECORDS
- MEDIA



Hydrotherapy Pool

The training center has several pool areas for use in athletic rehabilitation.

Vision Center

Dr. Don Peavy conducts eye exams for LSU's student-athletes in a convenient location in the Broussard Center for Athletic Training.



Pharmacy

The LSU Athletic Training Pharmacy is the only one of its kind in college athletics. Staffed by pharmacist Kevin Denoux, the LSU Athletic Training Pharmacy provides the Tigers with first-class service in a convenient location.



Dental Center

A fully functional dental center is located inside the Broussard Center for Athletic Training



Dr. Martin J. Broussard with running back Billy Cannon in 1959.

BROUSSARD

LSU's multi-million dollar athletic training facility is named in honor of Dr. Martin J. Broussard, the legendary trainer whose career spanned over 40 years at LSU, having been appointed to the position of head athletic trainer in 1948. Following his semi-retirement from the day-to-day work as trainer in 1993, he continued to serve LSU as an Assistant to the Athletic Director through 2001, giving him well over 50 years of service to the Athletic Department.

Among his many accomplishments was the formulation of "Quick Kick", an isotonic drink used to replace liquids, vitamins and the electrolytes lost through sweating. He was a trainer for the Pan American Games in 1955 and the U.S. Olympic team in 1960. In 1963, the Rockne Foundation named him Trainer of the Year. In 1978, Broussard was named to the NATA Hall of Fame followed by the Louisiana Athletic Trainer's Hall of Fame in 1982.



Rehabilitation

Graduate Assistant Athletic Trainer Mike Nicola monitors the health of LSU gymnast Vanessa Rodriguez.



Strength and conditioning can be the heart and soul of an athletic program's success, and LSU has taken great strides to improve its strength program and facilities. LSU student-athletes enjoy one of the finest strength and conditioning facilities in the nation with a 10,000-square foot weight room located on the North side of Tiger Stadium. The weight room features the latest in both strength training and cardiovascular training equipment.

Amenities

- ▶ 28 multi-purpose power stations
- ▶ 36 assorted selectorized machines
- ▶ 10 dumbbell stations with two sets of 5-180 pound free weights
- ▶ Custom made equipment by Body Masters and Eleiko





Critical to the development of an athlete as a student is an adequate academic facility and capable staff to further the athlete's progress. The Cox Communications Academic Center for Student-Athletes is responsible for overseeing the educational development and progress toward graduation for all student-athletes. The staff acts as a liaison between the student-athlete and the academic communities and insures that student-athletes comply with academic rules established by the University, NCAA and Southeastern Conference. The staff also coordinates academic programs designed to assist student-athletes in acquiring a quality education.

The Goal

For each student-athlete to reach and receive the highest-quality education and degree.

The Responsibility

To oversee the educational development and progress toward graduation for all student-athletes.

- ▶ Tutoring
- ▶ Career Counseling and Development
- ▶ Time Management
- ▶ Study Skills

- ▶ Insure that student-athletes comply with academic rules established by the University, NCAA and SEC

FACILITY BUILT BY THE TIGER ATHLETIC FOUNDATION



- INTRO
- THIS IS LSU**
- TIGERS
- COACHES
- REVIEW
- HISTORY
- RECORDS
- MEDIA



2005 Academic All-Americans

Lauren Companioni
 Annie Gagnon
 Jade Jenkins
 Kelly Lea



Academic Staff



Dr. Roger Grooters
 Executive Director



Ted White
 Director



Jim Rost
 Associate Director



Dr. Mary Boudreaux
 Associate Director



Tim Boyle
 Associate Director



Tommy Powell
 Technology Specialist



Jeanne Hieronimus
 Learning Specialist



Ronald Brewer
 Coordinator



Kristin Price
 Coordinator/Tutorial Coordinator



Jennifer Timmer
 Coordinator

2005 SEC Academic Honor Roll

April Burkholder
 Lauren Companioni
 Megan Durning
 Annie Gagnon
 Katherine Hilton
 Jade Jenkins
 Kelly Lea
 Rikki L'Heureux
 Kelly Phelan
 Terin Martinjak
 Lisa Rennie

INTRO

THIS IS LSU

TIGERS

COACHES

REVIEW

HISTORY

RECORDS

MEDIA



Paramount to the success of the “student” half of the term student-athlete is providing LSU athletes with the best possible resources to excel in the classroom. For more than 20 years, the LSU Academic Center for Student-Athletes has helped to build well-rounded student-athletes. But as times change and technology advances, the need for further improvements still exists. As a result, the Cox Communications Academic Center for Student-Athletes opened its doors in November of 2002. A \$15 million renovation to the Gym Armory not only made it among the nation’s premier centers, but put it at the forefront. Improvements to the existing center give LSU student-athletes the best opportunity for success by providing access to the latest technology, as well as an array of expanded services.

Amenities

- ▶ 54,000 square feet of working space
- ▶ 75 computer workstations
- ▶ 14 private computer rooms in a state-of-the-art computer lab
- ▶ Additional study rooms and classrooms for private or group study
- ▶ Electronic scheduling of tutoring sessions
- ▶ A 1,000-seat auditorium for classes and lectures

INTRO
THIS IS LSU
TIGERS
COACHES
REVIEW
HISTORY
RECORDS
MEDIA



Computer Stations

Throughout the Academic Center are 75 computer stations, providing student-athletes with a quiet working environment for research, writing and studying.



Bo Campbell Auditorium

The 1,000-seat auditorium is used through the year as a classroom and lecture hall. Each seat in the auditorium has space for a laptop and a modem hookup, providing each student unlimited learning opportunities. The auditorium also contains a movie theatre size screen to aid professors with lectures and classroom activities.



The Library

The library provides a perfect setting for individual study, or with a tutor as a group.

Study Area

Included in the 54,000 square feet of the Academic Center are individual study areas as well as 14 private computer rooms for student-athletes to work one-on-one with tutors or by themselves.



COMMUNICATIONS LAB

Along with the success of the LSU Gymnastics team comes a great deal of media attention and Dr. Tommy Karam, the Director of the Communications Lab, uses his facility, located on the fourth floor of the Cox Communications Academic Center for Student Athletes, to work with LSU student-athletes on their interactions with the media and interview skills. Karam's lab is a mock press conference setting to get the student-athletes used to handling themselves in front of both print and electronic media. He videotapes the mock interview sessions and reviews these with the student-athletes to help them become more comfortable in an interview setting.



Lights, Camera, Answer

Dr. Karam teaches LSU's student-athletes to interact with all phases of local and national media by working one-on-one in a press conference setting. The Communications Lab includes a working camera for Karam to review the session with the student-athletes.

INTRO

THIS IS LSU

TIGERS

COACHES

REVIEW

HISTORY

RECORDS

MEDIA



Louisiana State University and Agricultural & Mechanical College has, throughout its 144-year history, served the people of Louisiana, the region, the nation, and the world. LSU is creating a revolution, one of pervasive change and advancement. For the past five years, the focus of the LSU community has been an increased commitment to excellence. Our progress has been dramatic and shows no sign of stopping.



Having witnessed many of yesterday's possibilities become today's tangible realities, the LSU community set forth to capitalize on its success. The goal was to improve our standing as a nationally competitive flagship university. Following intense discussions among the LSU Board of Supervisors, campus administrators, faculty, and student leaders, the objectives required to reach this status crystallized, providing the impetus for LSU's National Flagship Agenda.

LSU Facts

Location: Baton Rouge, La.
 Founded: January 2, 1860
 Enrollment: 31,234
 President: Dr. William Jenkins
 Major Fields for Bachelor's Degrees: 72
 Major Fields for Master's Degrees: 72
 Major Fields for Doctoral Degrees: 54



INTRO
THIS IS LSU
TIGERS
COACHES
REVIEW
HISTORY
RECORDS
MEDIA

“The Most Diverse school in the nation.”

Newsweek magazine named Louisiana State University the “Most Diverse” school in the nation in the Sept. 3, 2003 issue. The enrollment consists of 24 percent minority students.



“Louisiana State University has a tradition of gratitude expressed in service to community and country.”



President George W. Bush
2004 LSU SPRING COMMENCEMENT

Campus Apartments - The Tigers' Home Away From Home

LSU has 18 residence halls across the spacious campus. The newest addition, the highly popular East Campus and West Campus apartments, fully furnished rooms with connecting suites all within a short walk from the dining hall and athletics facilities.



Amenities

- ▶ Dining Halls
- ▶ Weekly Housekeeping
- ▶ Cable Television
- ▶ High-Speed Internet
- ▶ Mail Service
- ▶ Card Access
- ▶ Facility Repairs
- ▶ Security
- ▶ Telephone Services
- ▶ Furnished
- ▶ Washer/Dryer
- ▶ Microwave

Reaching Out to The Community

COMMUNITY OUTREACH

- INTRO
- THIS IS LSU
- TIGERS
- COACHES
- REVIEW
- HISTORY
- RECORDS
- MEDIA

Community Outreach

Community Service not only enhances a student-athlete's college experience, but it also serves to expand character. Athletes not only gain a strong sense of self-worth, but also experience personal satisfaction and growth from volunteering and community service activities. More importantly are the benefits that the community receives. It enables the community to gain an enormous advantage in feeling that they have a "partnership" with LSU student-athletes.

LSU student-athletes participate in a variety of community service projects including reading in schools, nursing home visits, hospital pediatric ward visits, speaking engagements and more in East Baton Rouge Parish.



Kelly Phelan and basketball player Garret Temple read to students at a local elementary school.



Mike Mallet

Director for the CHAMPS/Life Skills program

Several times during the year the LSU gymnastics team makes visits to the children's ward at Our Lady of the Lake Regional Hospital.



(L-R) Lauren Klein, Kelly Lea and Kelly Phelan



Kelly Lea, Kelly Phelan and Terin Martinjak



Terin Martinjak and Lauren Klein



Kelly Phelan, Christina Suhr, Emily Ellis and Kelly Lea

INTRO
THIS IS LSU
TIGERS
COACHES
REVIEW
HISTORY
RECORDS
MEDIA

What is CHAMPS?

The Shaquille O'Neal CHAMPS/Life Skills program was developed by the NCAA to help prepare student-athletes for the challenges of life beyond the playing field. Through workshops, service projects, and social events, CHAMPS, an acronym for Challenging Athletes Minds for Personal Success, brings LSU student-athletes information that will prepare them for the biggest game of all - the game of life!

How Can CHAMPS Help?

By focusing on "real life" skills and personal development, the CHAMPS Program not only assists the student-athletes with meeting daily challenges, but also enhances student-athlete's growth in their college years and beyond.

CHAMPS at LSU

The CHAMPS/Life Skills program at LSU is operated out of the Cox Communications Academic Center for Student-Athletes, and the focus of the program is on five commitments viewed as critical to personal growth:

- ▶ Academic Excellence
- ▶ Athletic Excellence
- ▶ Career Development
- ▶ Personal Development
- ▶ Community Service

The LSU gymnastics team joined the Zeta Tau Alpha sorority in hosting a pancake breakfast where all proceeds raised were donated to the fight against breast cancer.



Ashleigh Clare-Kearney and Emily Ellis help serve breakfast at the ZTA house.



Emily Ellis (second from the right) and Lisa Rennie (far right) with members of the ZTA sorority.



Ashleigh Clare-Kearney (back left), Nicki Butler, April Burkholder, Vanessa Rodriguez (back right) and Christina Suhr pose with members of Zeta Tau Alpha sorority.

- INTRO
- THIS IS LSU**
- TIGERS
- COACHES
- REVIEW
- HISTORY
- RECORDS
- MEDIA



The state capitol building, located in Baton Rouge, is the tallest capitol building in the nation at 34 stories.

Hospitality and comfort are a Southern tradition practiced to perfection around Baton Rouge. Minutes from the city, ancient moss-draped oaks, fragrant honeysuckle, formal gardens and the finest examples of Southern architecture await. Combine this with the excitement of the mighty Mississippi River, cajun music and a gourmet meal that is topped with freshly brewed cafe-au-lait at one of Baton Rouge's fine restaurants. Mix in an LSU athletics event, and Baton Rouge becomes one of the most attractive cities for living, entertainment and education in the South.

Baton Rouge Facts

POPULATION:
 Baton Rouge227,818
 East Baton Rouge Parish.....412,852

AVERAGE TEMPERATURES:
 High81.3
 Low52.5
 Average67.5



▶ The average annual temperature in Baton Rouge is 68 degrees and the city features a semi-tropical climate highlighted by mild winter months.



▶ Baton Rouge is just an hour away from the French Quarter in New Orleans and even closer to the million-acre Atchafalaya Swamp, which is called one of the biggest fishing ponds in the country.



Distance Chart from Baton Rouge

(BASED ON 70 MPH SPEED):

Atlanta, Ga.	7 hours
Biloxi, Miss.	2 hours
Birmingham, Ala.	6 hours
Dallas, Texas6 1/2 hours	
Houston, Texas4 hours	
Jackson, Miss.2 1/2 hours	
Jacksonville, Fla. ..8 1/2 hours	
Little Rock, Ark.5 hours	
Mobile, Ala.3 hours	
Monroe, La.2 1/2 hours	
New Orleans, La.1 hour	
Orlando, Fla.10 hours	
Pensacola, Fla.4 hours	
Shreveport, La.4 hours	



The Mighty Mississippi

Baton Rouge, the capital city of Louisiana, sits on the banks of the Mississippi River.

INTRO
THIS IS LSU
TIGERS
COACHES
REVIEW
HISTORY
RECORDS
MEDIA

Louisiana Facts

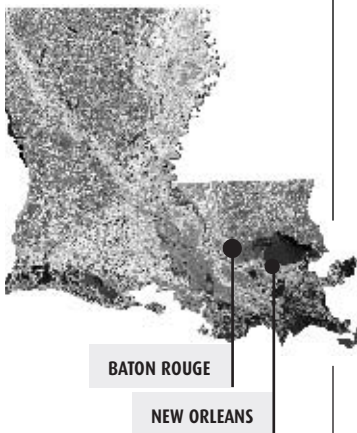
Nickname:The Pelican State
 Admitted to Union: .. April 30, 1812
 State Colors: ..Gold, white and blue
 State Bird:Brown Pelican
 State Dog: ..Catahoula Leopard Dog
 State Tree:Bald Cypress
 State Flower:Magnolia
 Climate:Subtropical

- ▶ Foods like boiled crawfish, jambalaya, shrimp etouffee, and gumbo make the cajun and creole cuisine of Louisiana the envy of the nation.
- ▶ Last year, an estimated 23.5 million U.S. resident visitors came to Louisiana.



Louisiana Lagniappe

- ▶ **Atchafalaya:** \a-chaff-a-LIE-a\
 n. Louisiana's famed undeveloped wetland.
- ▶ **Beignet:** \ben-YAY\
 n. A tasty French doughnut without the hole.
- ▶ **Boudin:** \BOO-dan\
 n. Hot, spicy pork mixed with onions, cooked rice and herbs and stuffed in sausage casing.
- ▶ **Etouffee:** \ay-too-FAY\
 n. Crawfish or shrimp in a delightfully spicy red sauce.
- ▶ **Gumbo:** \GUM-boe\
 n. A delicacy of South Louisiana. A thick, robust soup with thousands of variations, only a few of which are Shrimp Gumbo, Chicken Gumbo, and File' Gumbo.
- ▶ **Krewe:** \crew\
 n. An organization that puts on Mardi Gras balls and parades.
- ▶ **Lagniappe:** \LAHN-yap\
 n. A little something extra.
- ▶ **Po-Boy:** - n. A sandwich extravaganza of either shrimp, oyster, roast beef, etc., that's served on a crispy-crust loaf bread called French Bread.
- ▶ **Vieux Carré:** \vyuh-kah-RAY\
 n. The French name for the French Quarter meaning "Old Square."



Louisiana, one of America's most culturally and geographically diverse states, is located in the heart of the Deep South. Adjacent to the Gulf of Mexico and dotted with hundreds of lakes and bayous, Louisiana is home to all types of terrain from swamps and marshes to lush forests and gentle hills. The state is known for its charm and friendly people, and still maintains the stately antebellum plantations and majestic oaks of its early days. The atmosphere is elegant, yet relaxed and casual.



Unique Culture

Louisiana is home to Mardi Gras, a two-week party that includes more than 60 parades and millions of visitors from around the world. All year long New Orleans Jazz, Creole culture, stately riverboats and some of the finest cuisine in the world is mixed into the diverse and renowned culture of Louisiana.

A Championsh



The 2004-05 athletics year was another wonderful year for LSU. The Tigers and Lady Tigers enjoyed success from the fields and courts to the classroom. All in all it was an exciting year for LSU's student-athletes, coaches and fans.

Postseason Presence

Of LSU's 20 sports, 14 teams advanced to postseason play. Among the highlights: the football team advanced to a New Year's bowl game for the fourth straight year ... the women's basketball team won the SEC title and reached the Final Four for the second straight season ... the men's outdoor track & field team finished No. 3 in the country ... and the men's tennis team reached the NCAA Sweet Sixteen ... LSU was one of only four schools in the country to send its football team to a New Year's Bowl game and both of its basketball teams to the NCAA Tournament.



In the Classroom

7

Seven of 16 sports posted a team grade point average of 3.0 or higher, and 13 of the 16 were above 2.8, with women's tennis leading the way with a team GPA of 3.40.

50%

Nearly 50 percent of the student-athletes - 48.5 percent to be exact - recorded a grade point average of 3.0 or higher. A total of 79 had a GPA of 3.5 or higher and 22 Tigers had a perfect 4.0 GPA in the spring semester.

4

Four Tigers - Chelsea Agar in soccer, Brandon Bass in men's basketball, Jason Determann in baseball and Paul White in men's tennis - were named SEC Scholar-Athletes of the Year in their respective sports.

136

LSU had a total of 136 student-athletes earn Academic All-SEC selections in 2004-05, the second-most selections in the conference. To receive the award each student-athlete must have a 3.0 grade point average.



2005 NCAA TENNIS DOUBLES RUNNER-UPS KEN SKUPSKI AND MARK GROWCOTT

Hardcourt Duo

The men's tennis doubles team of Ken Skupski and Mark Growcott advanced to the finals of the NCAA doubles championships.

Coaching Excellence

Gymnastics head coach D-D Breaux and women's basketball head coach Pokey Chatman each earned the Southeastern Conference's top billing as Coach of the Year, while Chatman, was named the National Coach of the Year by the Women's Basketball Coaches Association, Naismith and the United States Basketball Writers Association.

Conference Crowns

The women's basketball team won the Southeastern Conference championship and two teams - men's basketball and baseball - finished first in the SEC Western Division.

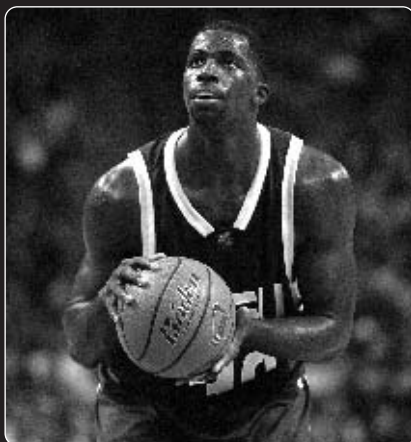
Elite Teams

Six LSU teams finished their seasons ranked in the nation's top 10 and 11 finished in the top 30. Two teams - the women's basketball team and gymnastics team - were ranked No. 1 in the nation during their respective seasons.

hip Tradition



2005 SEC GYMNAST OF THE YEAR - APRIL BURKHOLDER



2005 SEC MEN'S BASKETBALL PLAYER OF THE YEAR - BRANDON BASS

WADE, NAISMITH, AND WOODEN TROPHY
WINNER FOR NATIONAL PLAYER OF THE
YEAR - SEIMONE AUGUSTUS



Amazing Athletes

Once again this year, numerous Tigers were named All-Americans in their sports, and three were named the best in their sport in the SEC: Seimone Augustus in women's basketball, Brandon Bass in men's basketball and April Burkholder in gymnastics.

Fast Foursome

At the NCAA Track and Field Championships, the men's 4x400-meter relay team of Reginald Dardar, Kelly Willie, Bennie Brazell and Xavier Carter set a collegiate record in winning the national title in that event.

Top Billing

The most significant awards went to Seimone Augustus who won the Wade, Naismith and John R. Wooden Trophies, given annually to the best women's college basketball player in the nation.

National Team Championships (43)

Men's Basketball (1)	1935
Boxing (1)	1949
Football (2)	1958, 2003
Men's Golf (4)	1940, 1942, 1947, 1955
Men's Indoor Track (2)	2001, 2004
Women's Indoor Track (11)	1987, 1989, 1991, 1993, 1994, 1995, 1996, 1997, 2002, 2003, 2004
Men's Outdoor Track (4)	1933, 1989, 1990, 2002
Women's Outdoor Track (13)	1987, 1988, 1989, 1990, 1991, 1992, 1993, 1994, 1995, 1996, 1997, 2000, 2003
Baseball (5)	1991, 1993, 1996, 1997, 2000

SEC Team Championships (106)

Baseball (13)	1939, 1943, 1946, 1961, 1975, 1986, 1990, 1991, 1992, 1993, 1996, 1997, 2003
Men's Basketball (8)	1935, 1953, 1954, 1979, 1981, 1985, 1991, 2000
Women's Basketball (1)	2005
Football (9)	1935, 1936, 1958, 1961, 1970, 1986, 1988, 2001, 2003
Men's Golf (15)	1937, 1938, 1939, 1940, 1942, 1946, 1947, 1948, 1953, 1954, 1960, 1966, 1967, 1986, 1987
Women's Golf (1)	1992
Gymnastics (1)	1981
Men's Swimming (1)	1988
Men's Tennis (4)	1976, 1985, 1998, 1999
Men's Indoor Track (4)	1957, 1963, 1989, 1990
Women's Indoor Track (10)	1985, 1987, 1988, 1989, 1991, 1993, 1995, 1996, 1998, 1999
Men's Outdoor Track (22)	1933, 1934, 1935, 1936, 1938, 1939, 1940, 1941, 1942, 1943, 1946, 1947, 1948, 1951, 1957, 1958, 1959, 1960, 1963, 1988, 1989, 1990
Women's Outdoor Track (8)	1985, 1987, 1988, 1989, 1990, 1991, 1993, 1996
Softball (5)	1999, 2000, 2001, 2002, 2004
Volleyball (4)	1986, 1989, 1990, 1991

The five individuals on this page are the only men to have their jerseys retired by LSU. Basketball has retired the No. 23 for Pete Maravich, No. 50 for Bob Pettit, Jr., and No. 33 for Shaquille O’Neal. Football’s only retired jersey is the No. 20 worn by Billy Cannon, while baseball retired the No. 15 in honor of longtime coach and current athletics director Skip Bertman.

- INTRO
- THIS IS LSU**
- TIGERS
- COACHES
- REVIEW
- HISTORY
- RECORDS
- MEDIA



50

Bob Pettit

Led LSU to its first NCAA Final Four in 1953 and he later became the first player in NBA history to exceed the 20,000-plus point barrier. Pettit is a member of the NBA Hall of Fame and in 1997 he was named as one of the top 50 players in NBA history.



23

Pete Maravich

“Pistol Pete,” Maravich still holds the NCAA record for career points with 3,667 and for career scoring average with 44.2 points a game. He was selected the National Player of the Year in 1970 after leading the Tigers to the NIT Final Four. He scored 50+ points an amazing 28 times. He went on to a 10-year professional career and was selected as one of the NBA’s 50 greatest players in 1997.



33

Shaquille O’Neal

Was the first pick in the 1992 NBA Draft. He was named MVP of the league in 2000 and was a three-time NBA Finals MVP after leading the Los Angeles Lakers to three World Championships. At LSU, O’Neal averaged 21.6 points and 13.6 rebounds for his career, and in 1991, he was named the World’s Amateur Athlete of the Year as well as SEC Athlete of the Year and National Player of the Year. In 1997, he was named as one of the top 50 players in NBA history.



20

Billy Cannon

One of the true legends of college football in the South, Cannon was the 1959 Heisman Trophy winner and helped the Tigers to the 1958 national title. Cannon’s most memorable performance came in 1959 against Ole Miss when No. 1 LSU trailed No. 3 Ole Miss 3-0 in the fourth quarter. He fielded a punt, broke seven tackles and returned it 89 yards for the 7-3 victory. He went on to a successful 11-year professional career.



15

Skip Bertman

A legend in the college baseball ranks, Bertman created a dynasty at LSU, guiding the Tigers to five national titles in a 10-year stretch from 1991-2000. He also skipped the United States to a bronze medal at the 1996 Olympics in Atlanta and was an assistant on the gold medal-winning U.S. squad in Seoul, Korea in 1988. Bertman retired from coaching following the 2001 season and is currently the LSU athletic director.

INTRO
THIS IS LSU
TIGERS
COACHES
REVIEW
HISTORY
RECORDS
MEDIA

LSU's Success in each of its 20 sports is evident with this outstanding list of former Tigers.



Temeka Johnson

The 2004-05 Lieberman Award winner as the nation's top point guard, Johnson led the Lady Tigers to back-to-back NCAA Final Fours, the 2004-05 SEC regular season title and the 2003 tournament title, and was the SEC's all-time assist leader, finishing her career fifth in NCAA history with 945.



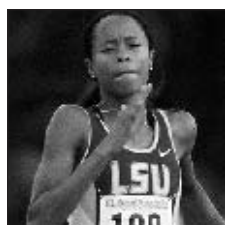
Esther Jones

A 21-time All-American while at LSU, Jones won a gold medal as a member of the United States' 4x100-meter relay team at the 1992 Olympic Games in Barcelona.



Nicki Arnstad

The 2002 NCAA Floor Exercise Co-Champion, Arnstad became the first LSU gymnast to win a national title. She was a two-time All-American and won the NCAA Central Regional Floor and All-Around Championships.



Muna Lee

The most decorated track and field athlete in school history, Lee won 20 All-America awards and a school record seven national titles while helping the Lady Tigers to five NCAA team championships during her time at LSU. A 2004 Olympian, she finished seventh in the 200 meters at the Summer Games in Athens, Greece.



Britni Sneed

One of three four-time first-team All-SEC selections in conference history, Sneed was a two-time SEC Player of the Year and a three-time NFCA All-American, leading the Tigers to their first Women's College World Series appearance in 2001.



Walter Davis

A two-time Olympian, Davis won the triple jump title at the 2005 World Championships. While at LSU, Davis won six individual NCAA titles, earned nine All-America honors and helped the Tigers to NCAA team titles in 2001 and 2002.



David Toms

The two-time SEC Player of the Year, Toms has gone on to a successful career on the PGA Tour. Among his PGA Tour victories was a thrilling win at the PGA Championship in August of 2001.



Marie Ferdinand

The eighth pick overall in the 2001 WNBA draft by the Utah Starzz. A Kodak All-American in 2000-01 who helped the Lady Tigers to the Elite Eight in 2000 and to the NCAA Tournament three times. She is a two-time WNBA all-star selection.



Todd Walker

Capped his LSU career as the SEC's all-time leader in hits, runs, RBIs, and total bases. Walker, who is a member of the All-Time College World Series Team, led LSU to the national title in 1993.



Meredith Duncan

The nation's top collegiate golfer in 2002, Duncan left LSU as the school's best female golfer. She earned first-team All-America honors as a senior in 2002 and won the United States Women's Amateur Championship in 2001.



Ben McDonald

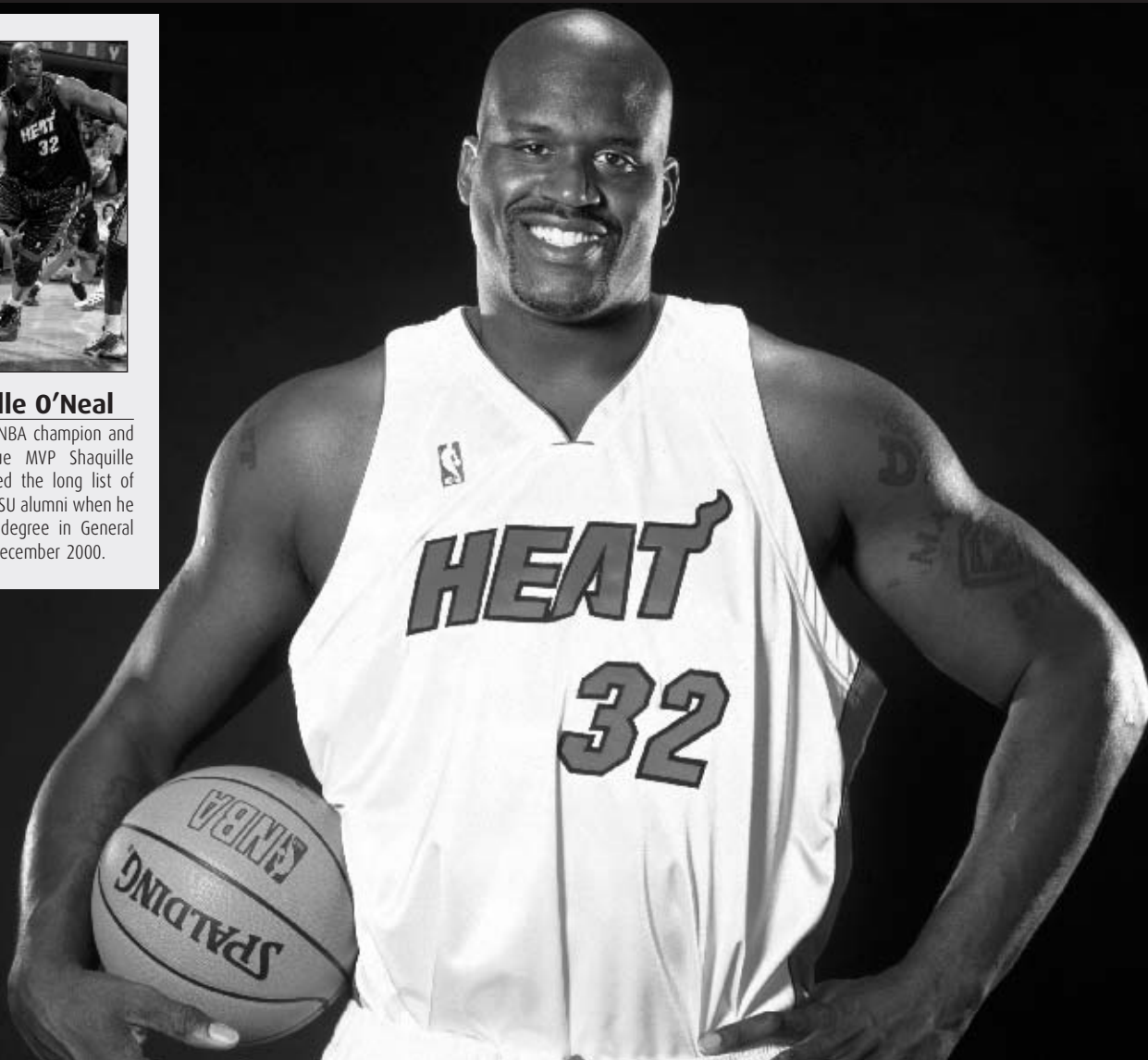
Named National Player of the Year in 1989 and he was later the first player chosen in the Major League Baseball Draft by the Baltimore Orioles.

- INTRO
- THIS IS LSU
- TIGERS
- COACHES
- REVIEW
- HISTORY
- RECORDS
- MEDIA



Shaquille O'Neal

Three-time NBA champion and 2000 league MVP Shaquille O'Neal joined the long list of prominent LSU alumni when he earned his degree in General Studies in December 2000.



While LSU continues to make its mark on the playing field, winning 43 national titles, the state's flagship University continues to be a breeding ground for some of the greatest minds in the world—past and present.



Eduardo Aguirre

Named the first Director of U.S. Citizenship and Immigration Services (USCIS), a department under the Department of Homeland Security. President George W. Bush appointed him to this position, in February 2003.



Kevin Faulk

Excelled in both the classroom and on the playing field as he graduated in just three years. Faulk is currently a member of the three-time Super Bowl Champion New England Patriots.



Dr. James Andrews

A world-renowned orthopedic surgeon. Andrews is a 1963 graduate of LSU and a 1967 graduate of LSU Medical School. While at LSU, Andrews won the SEC indoor and outdoor titles in the pole vault.



Carlos Flores

Currently president of Honduras, a position to which he was elected in 1997. Flores is married to the former Mary Carol Flake, also an alumnus of LSU.



Lod Cook

Graduated from LSU with a bachelor's degree in Mathematics in 1955 and then earned his Master's degree in Petro Engineering in 1955. Cook served as CEO of ARCO for nine years.



Jim Flores

Graduated from LSU and currently is the Vice Chairman of Ocean Energy, the World's Leader in Oil Exploration, based in Houston, Texas.

INTRO
THIS IS LSU
TIGERS
COACHES
REVIEW
HISTORY
RECORDS
MEDIA

Prominent LSU Alumni

Donald R. Anderson - Diplomat.

Larry Arthur - AIDS researcher.

Elizabeth Ashley - Actress.

John Ed Bradley - Sports Illustrated writer and novelist.

John Breaux - U.S. Senator (1987-present) and U.S. Congressman (1972-86) from Louisiana.

Don Clayton - President and CEO, Meridian Oil Co.

"Lightning Joe" Lawton Collins - Chief of Staff for President Truman.

Eric Arture Delvalle - Former president of Panama.

A. Wright Elliott - Executive vice president, Chase Manhattan Bank.

Graves Erskine - U.S. Marine Corps General in WWII.

Maxime A. Faget - Designed Mercury and Gemini spacecrafts.

Mary Carol Flake Flores - First Lady of Honduras.

Julie Giroux - Emmy Award-winning composer.

Rufus William (Bill) Harp - Television Set decorator.

Walter Hitesman - Former president, Reader's Digest.

Hubert Humphrey - U.S. vice president (1965-69).

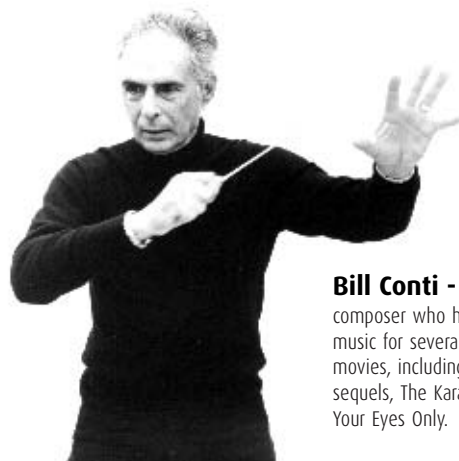
W. Vernon Jones - Branch Division Chief, NASA headquarters

Russell Long - U.S. Senator from Louisiana, 1948-87.

James Malmberg - President, CEO, Piccadilly.

Ray Marshall - Secretary of Labor under President Carter.

Grover Murray - President emeritus of Texas Tech University.



Bill Conti - Oscar-winning composer who has written theme music for several well-known movies, including Rocky and its sequels, The Karate Kid and For Your Eyes Only.

Edwin Newman - TV journalist and commentator.

Carolyn Bennett Patterson - Former senior editor, National Geographic.

J. Howard Ramin - CEO, Texaco.

Rex Reed - Drama critic, syndicated columnist.

Maj. Gen. Thomas Rhame - Led 1st Infantry Division against Iraq during Persian Gulf War.

Thomas O. Ryder - President, American Express Publication Corp. and magazine publisher.

Dolores Spikes - President of the University of Maryland-Eastern Shore.

Ray Strother - Author, political consultant.

Billy Tauzin - U.S. House of Representatives from 1980-2005.

Joanne Woodward - Academy Award-winning actress.



Reinosuke Hara
Researched at LSU in the 1950s and then later received the honorary Doctorate of Science degree from LSU in 1992. Currently is Vice-Chairman of Seiko Instruments.



Eddie J. Jones
President of the NFL's Miami Dolphins franchise. The 36-year veteran of the NFL currently serves on the NFL's Employee Benefits Committee.



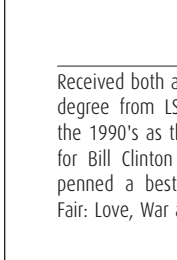
Mary L. Landrieu
Became the first woman from Louisiana elected to a full term in the United States Senate in 1997.



Marty Sixkiller
Senior Technical Director for PDI/DreamWorks' movies "Antz", "Shrek", and "Shrek 2."



Harry J. Longwell
Graduated from LSU in 1963 with a Bachelor's degree in Petroleum Engineering and currently is Executive Vice President of ExxonMobil.



James Carville
Received both a Bachelor's degree and Law degree from LSU. Carville gained fame in the 1990's as the chief campaign strategist for Bill Clinton and Al Gore. Carville also penned a best-selling memoir titled All's Fair: Love, War and Running for President.





Dr. William L. Jenkins

President, LSU

On April 1, 1999, Dr. William L. Jenkins, formerly Chancellor of Louisiana State University and Agricultural & Mechanical College, became president of the LSU System, which includes nine institutions on 10 campuses in five cities, as well as 10 public hospitals in 10 cities. With the departure of Chancellor Mark Emmert in mid-June, the LSU Board of Supervisors asked President Jenkins to again assume the role of Interim Chancellor until a successor for Dr. Emmert can be selected.

A native of South Africa, Dr. Jenkins studied at the University of Pretoria, where he received his professional veterinary medicine degree in 1958 and specialist credentials in 1968. He received his Ph.D. degree from the University of Missouri, Columbia, in 1970. After practicing veterinary medicine for four years, he joined the faculty at the University of Pretoria, advancing through the ranks to become professor and head of the Department of Veterinary Physiology, Pharmacology, & Toxicology in 1971.

He moved to the United States in 1978 and joined the faculty in the Department of Veterinary Physiology & Pharmacology at Texas A&M University. He was appointed dean of the LSU School of Veterinary Medicine in 1988, and was named LSU's provost and vice chancellor for academic affairs in September 1993.

When he was appointed LSU's fifth chancellor in November 1996, Dr. Jenkins reorganized the campus administration to be more effective and more responsive, and oversaw the development of a strategic plan to guide the University in its preparation for the challenges of the next century.

Over the years, Dr. Jenkins has received numerous teaching and service awards and recognitions, having been named the 1997 Communicator of the Year by the Public Relations Association of Louisiana and a Distinguished Alumnus by the University of Missouri in 1999. The regional chapter of Toastmasters International also presented him with its 1999 Communication and Leadership Award, and he was awarded the Vision of Excellence Award 2000 by the New Orleans Regional Chamber of Commerce and the New Orleans Chapter of MetroVision. In addition, the

University of Pretoria awarded an honorary doctoral degree to Dr. Jenkins in September 2000.

Dr. Jenkins has been active in continuing education and has delivered more than 150 lectures and addresses to diverse groups in both the United States and abroad. He has taught extensively at both the professional and graduate levels. He has published more than 60 scientific articles and has contributed 15 chapters to various textbooks. He is co-author of a textbook on veterinary pharmacology.

Dr. Jenkins has been and continues to be a member of many professional organizations and select committees. Most recently he served on the National Institute of Health's Alcohol Abuse and Misuse on College Campuses Committee and on a special Steering Committee of the Southern Association of Colleges and Schools to review accreditation criteria for colleges and universities. Dr. Jenkins also is a member of the National Association of State Universities and Land Grant Colleges' Committee on Food and Society and currently serves on the Governor's Advisory Commission on Coastal Restoration and Conservation.

His current community engagement includes serving on the boards of the Louisiana Endowment for the Humanities, Greater Baton Rouge Chamber of Commerce, Academic Distinction Fund, Council for a Better Louisiana, Arts Council of Greater Baton Rouge, The Nature Conservancy of Louisiana, and the Baton Rouge board of the National Conference for Community and Justice.

Dr. Jenkins and his wife, Peggy, have four children -Sharon, Gwynn, Anthea, and Warren- and nine grandchildren.

LSU Board of Supervisors



Ronald R. Anderson
Ethel, La.
District 6



Dr. Jack A. Andonie
Metairie, La.
District 1



Bernard E. Boudreaux, Jr.
Baton Rouge, La.
Member at Large
Vice-Chairman



Marty J. Chabert
Chauvin, La.
District 3



Charles V. Cusimano
Metairie, La.
District 1



Francis M. Gowen, Jr.
New Orleans, La.
District 4



Louis Lambert
Prairieville, La.
District 6



Laura A. Leach
Lake Charles, La.
District 7



Dorothy "Dottie" Reese
New Orleans, La.
District 2



James P. Roy
Lafayette, La.
District 7



Jerry E. Shea, Jr.
New Iberia, La.
District 3



C. Stewart Slack
Shreveport, La.
District 4
Chairman



Charles S. Weems III
Alexandria, La.
District 5

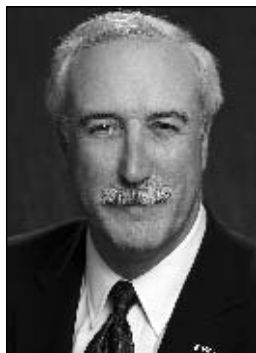


Rod West
New Orleans, La.
District 2



Lacey D. Spencer
Shreveport, La.
Student Representative

- INTRO
- THIS IS LSU**
- TIGERS
- COACHES
- REVIEW
- HISTORY
- RECORDS
- MEDIA



Sean O'Keefe

Chancellor, LSU

Sean O'Keefe has been appointed chancellor of Louisiana State University and Agricultural & Mechanical College, becoming the seventh chancellor to lead the state's flagship University.

Nominated by President George W. Bush and confirmed by the United States Senate, Sean O'Keefe was appointed by the President as the 10th Administrator of the National Aeronautics and Space Administration on December 21, 2001, his fourth Presidential appointment. As Administrator, O'Keefe led the NASA team and managed its resources as NASA sought to advance exploration and discovery in aeronautics and space technologies.

O'Keefe joined the Bush Administration on inauguration day and first served as the Deputy Director of the Office of Management and Budget until December 2001, overseeing the preparation, management and administration of the Federal budget and government wide-management initiatives across the Executive Branch.

Prior to joining the Bush Administration, O'Keefe was the Louis A. Bantle Professor of Business and Government Policy, an endowed chair at the Syracuse University Maxwell School of Citizenship and Public Affairs. He also served as the Director of National Security Studies, a partnership of Syracuse University and Johns Hopkins University, for delivery of executive education programs for senior military and civilian officials. Appointed to these positions in 1996, he was previously Professor of Business Administration and Assistant to the Senior Vice President for Research and Dean of the Graduate School at the Pennsylvania State University.

Appointed as the Secretary of the Navy in July 1992 by President George Bush, O'Keefe had previously served as Comptroller and Chief Financial Officer of the Department of Defense since 1989. Before joining then Defense Secretary Dick Cheney's Pentagon management team in these capacities, he served on the United States Senate Committee on Appropriations staff for eight years, and was Staff Director of the Defense Appropriations

Subcommittee. His public service began in 1978 upon selection as a Presidential Management Intern.

O'Keefe is a Fellow of the National Academy of Public Administration, a member of the Committee on Climate Change Science and Technology, and a Fellow of the International Academy of Astronautics. During his academic postings, he was a Visiting Scholar at the Wolfson College of the University of Cambridge in the United Kingdom, a member of the Naval Postgraduate School's civil-military relations seminar team, and conducted seminars for the Strategic Studies Group at Oxford University. He served on the national security panel to devise the 1988 Republican platform and was a member of the 1985 Kennedy School of Government program for national security executives at Harvard University.

In 1993, President Bush and Secretary Cheney presented him the Distinguished Public Service Award. He was the 1999 faculty recipient of the Syracuse University Chancellor's Award for Public Service; recipient of the Department of the Navy's Public Service Award in December 2000; and has been awarded honorary doctorate degrees from several prestigious educational institutions. In March 2003 and 2004, he was recognized and honored by the Irish American Magazine as one of the Top 100 Irish Americans.

He is the author of several journal articles, contributing author of "Keeping the Edge: Managing Defense for the Future" released in October 2000, and in 1998 co-authored "The Defense Industry in the Post-Cold War Era: Corporate Strategies and Public Policy Perspectives."

Sean O'Keefe earned his Bachelor of Arts in 1977 from Loyola University in New Orleans, Louisiana, and his Master of Public Administration degree in 1978 from The Maxwell School. O'Keefe and his wife Laura have three children- Lindsey, Jonathan and Kevin.



Kenneth E. Carpenter, Faculty Athletics Representative

Kenneth E. Carpenter is in his second year as LSU's faculty representative in NCAA and Southeastern Conference matters.

Carpenter, a professor in the School of Architecture, has taught at LSU since 1986. He received his bachelor's degree in architecture from the University of Oklahoma in 1962 and his master's from the University of Minnesota in 1967. Before joining the LSU faculty, he served at Clemson University as associate professor of architecture from 1967-77; Ball State University, where he was professor and chairman of

the Department of Architecture, 1977-81; and, Iowa State University, serving as professor and chairman, Department of Architecture from 1981-86.

At LSU, he served as the dean of the College of Design from 1986-97; Interim Executive Director of International Programs from 1997-98; and Interim Dean of the College of Art and Design from 2001-02.

Carpenter is a member of Phi Kappa Phi, the American Institute of Architects, and the American Association of University Professors.

INTRO

THIS IS LSU

TIGERS

COACHES

REVIEW

HISTORY

RECORDS

MEDIA

INTRO

THIS IS LSU

TIGERS

COACHES

REVIEW

HISTORY

RECORDS

MEDIA



Skip Bertman

LSU Athletics Director

Bertman's unyielding desire to succeed drove him to the pinnacle of his profession, and his astute knowledge of the game -- obtained from over 40 years of coaching -- combined with his steadfast determination and irrepressible enthusiasm transformed LSU Baseball into the nation's premier program.

National Championships

2000, 1997, 1996, 1993, 1991

SEC Championships

1997, 1996, 1993, 1992, 1991, 1990, 1986

Career Record (1984-2001)

870-330-3 (.724)

NCAA Tournament Record

89-29 (.754), highest winning percentage in NCAA history

National Coach of the Year

2000, 1997, 1996, 1993, 1991, 1986

College World Series Appearances

2000, 1998, 1997, 1996, 1994, 1993, 1991, 1990, 1989, 1987, 1986

Already a Louisiana Legend and one of the greatest college baseball coaches of all time, J. Stanley "Skip" Bertman has made the seamless transition into the athletics director's chair with the same enthusiasm, vision and demand for excellence that were trademarks of his stellar coaching career.

In just four years as LSU's director of athletics, Bertman has already added to his impressive list of on-the-field achievements. Under his direction, LSU enjoyed arguably the greatest athletics years in the history of the institution. In 2003-04 three teams won national championships, nine teams finished in the nation's top ten, and fourteen teams ranked in the top 25 and in 2004-05 14 teams advanced to the post-season. LSU teams also enjoyed improved grade point averages across the board, making the LSU student-athlete experience a success on and off the fields of competition.

While supervising the Tigers' progress on the playing fields, he has begun to implement measures necessary to realize his vision of building the LSU athletics department into the best in the country. Bertman's bold and innovative plans promise to keep the Tigers among the nation's elite in all phases of collegiate athletics.

Bertman is now in the midst of upgrading LSU's athletics complex. Working hand in hand with the Tiger Athletic Foundation, Bertman has already overseen the completion of the Cox Communications Academic Center for Student-Athletes while renovating Tiger Stadium and the Pete Maravich Assembly Center, and constructing the Football Operations Center.

It was also Bertman who took the bold but essential move to implement a seat contribution program in Tiger Stadium to fund facility improvements and ensure the financial stability of the LSU Athletics Department for the next decade.

Bertman was named LSU's athletics director on January 19, 2001. With Bertman, LSU gained an athletics director who provides the leadership and experience necessary to manage the Tigers' \$52 million budget.

Bertman guided LSU to five NCAA baseball titles, and his teams drew huge crowds to venerable Alex Box Stadium, as the Tigers led the nation in attendance in each of his final six seasons (1996-2001).

He also served as head coach of the 1996 U.S. Olympic team which captured the bronze medal in Atlanta.

Bertman continues to be honored for his remarkable coaching tenure, as he was inducted in June, 2002, into the Louisiana Sports Hall of Fame. He was inducted into the American Baseball Coaches Association Hall of Fame in January, 2003.

In a Baseball America poll published in 1999, Bertman was voted the second greatest college baseball coach of the 20th century, trailing only Rod Dedeaux of Southern California. Bertman and Dedeaux are the only coaches to win five CWS titles.

He had previously earned recognition as one of the nation's brightest assistant coaches while at the University of Miami (Fla.) for eight seasons (1976-83). Before working at Miami, Bertman was renowned for his coaching excellence. In 11 seasons at Miami Beach High School, he directed the Hi-Tides to a state championship and two runners-up finishes and he was named Florida's Coach of the Year on three occasions.

In 1975, Bertman coached at Miami-Dade Downtown, leaving after one season to join legendary head coach Ron Fraser at Miami. The move was a homecoming of sorts, as Bertman spent his collegiate playing days with the Hurricanes as an outfielder and catcher from 1958-60. He earned his B.A. in health and physical education from Miami in 1961 and received his master's degree from UM in 1964.

Bertman and his wife Sandy are the parents of four daughters -Jan, Jodi, Lisa and Lori. The Bertman's have three grandchildren - Sophie Faith and Isaac Stanley, the children of Emile and Lori Bertman Guirard, and Samuel Aaron, the son of Drew and Lisa Pate.