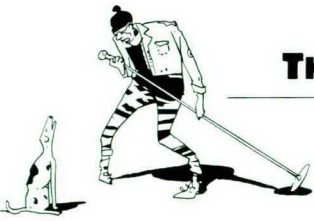


THE PUZZLER

by EMILY COX and HENRY RATHVON



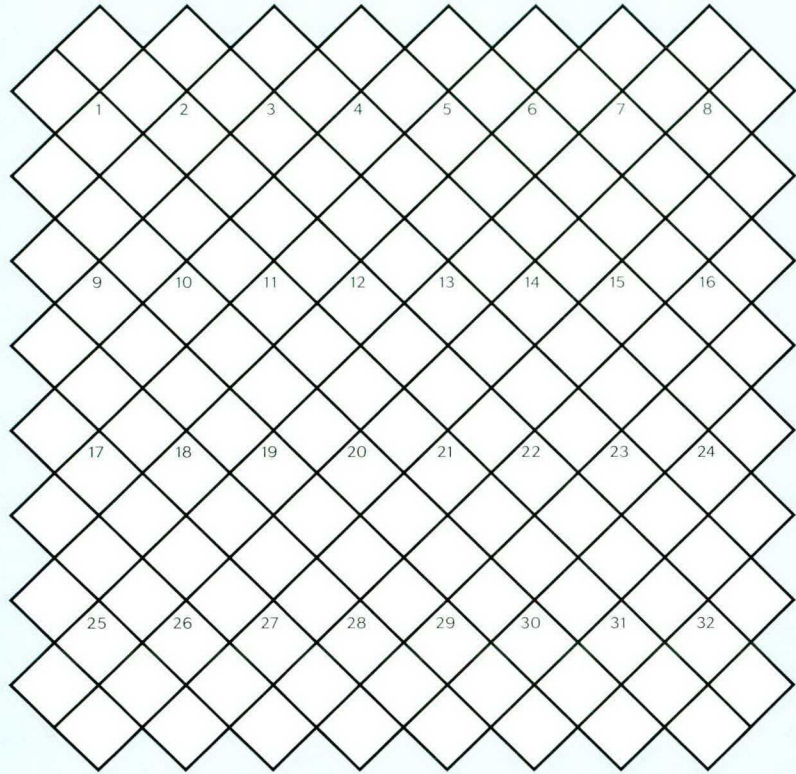
Eights

Each of this puzzle's clues yields an eight-letter answer to be entered in the grid so as to trace a normal (vertical) figure eight. An entry may proceed in any direction from its starting point in the appropriately numbered square, crossing itself at the fifth letter—which is, therefore, the same as the first. Letters in the grid's eight unchecked corner squares, reading clockwise, will show one way to form a figure eight. Answers include one capitalized word.

Last month's Puzzler solution is on page 202.

CLUES

1. Start of *Torn Curtain* breaking quiet
2. Sort of mask and cuff Ella designed (*hyphenated*)
3. Revealing true drink after good shot?
4. Masculine, in the manner of silent dog
5. Doubt oar could be what moves a boat
6. Confederate understood about Yankee's first sandwich choice (*two words*)
7. Split beam around western watercourse
8. Scores left in stalemates
9. Last of oat crumbs for some horses
10. Gradually fills INS farms
11. Baby food improperly containing popular analgesic (*two words*)
12. Fantastic sum a mint makes free
13. Westbound, choose among cashiers in remote stations
14. Eating vegetables, monkey died satisfied
15. Traffic hazard and a bummer, running into deer (*two words*)
16. Company kept by Alice's crazy, variegated cats



17. Don't allow eccentric keeping above-average financial record
18. Shut down, losing Liberal is unable to function
19. Increase number included in layer
20. Label wrapping in metal "polluting"
21. Tick Babe off with slander
22. Passing boat stuck in grass, moved the car
23. Trek in part beside mountain, and notice tablet (*two words*)
24. Meagerly small garnish, with a slight twist?
25. Not mentioning nail found in shelter (*two words*)
26. Horse's original new harness gets unpleasant
27. Changing the lists nettles
28. Sewed up old hat with name inside
29. Lack of flexibility in the morning evident in a series of steps
30. Irregular chunk of coral invested in for one thousand (*hyphenated*)
31. A word contributed to flood reduction
32. A green also known as "tamarin's tail" in Amazonian language

Note: The instructions above are for this month's puzzle only. It is assumed that you know how to decipher clues. For a complete introduction to clue-solving visit www.theatlantic.com/issues/puzzle.htm or send an addressed, stamped long envelope to The Atlantic Puzzler, 77 North Washington Street, Boston, Mass. 02114.