



THE PUZZLER

by EMILY COX and HENRY RATHVON

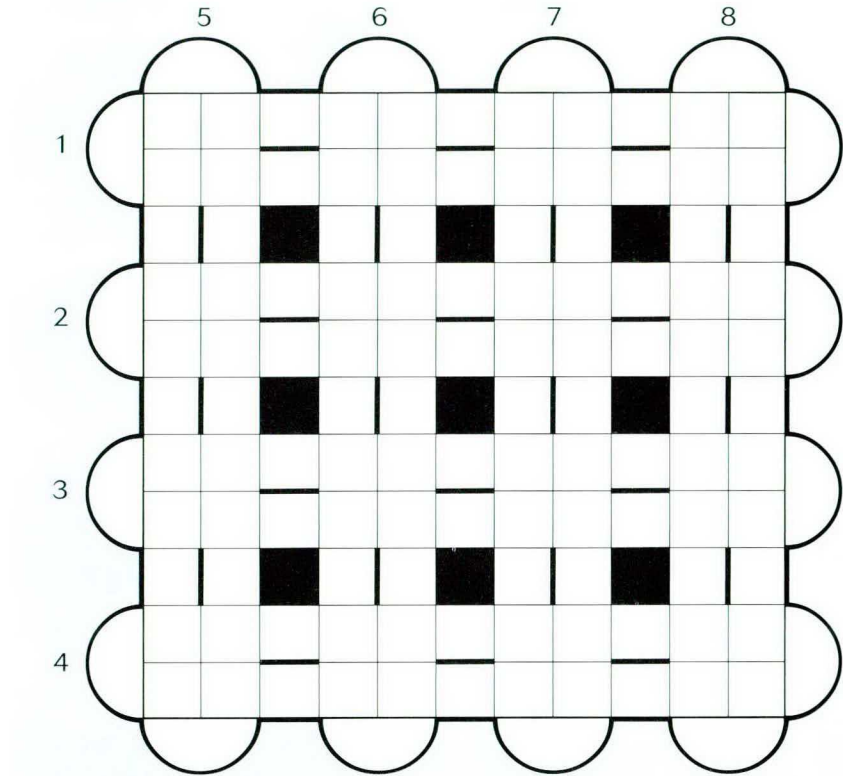
Loops

Each of the eight closed loops forming this puzzle's grid contains four consecutive words reading clockwise. The loops' starting points and the lengths of their entries are not given, so solvers will need to match intersecting letters in order to align the loops correctly. Solvers achieving the correct solution will find an appropriate reward in the letters projecting from the grid. Six answers are capitalized, and the answers to 3.c and 7.b are uncommon terms.

Last month's Puzzler solution is on page 154

CLUES

1. a. Guess: start of next loop is hell
b. Take control of vast expanses by proclamation?
c. One hero, possibly?
d. Dickens' face showing two spots
2. a. Piece of rock in sediment looks sideways
b. Slightly adjusted fabric worn by a king
c. Strained apricot ultimately canned
d. Huge insect eating one M & M
3. a. Officers turned back sellout crowd
b. Smoke packs to procrastinate (*two words*)
c. Accelerate back on street for about a kilometer
d. Game bird Round Table knight heard
4. a. Cryptic clue in "Hearts"
b. Given information and nourished with cheese?
c. Large bottles kids attached behind vehicle
d. Clothing rage: plastic



5. a. Bird of prey agitated parrot
b. In article, notice mid-April story line
c. New York river loops west, then east by pass
d. Get burned about large bill
6. a. Bird going around prune crate
b. Small farm frequently starting with pair of crops
c. Place for investigating our party in Britain
d. At audition, make a mark next to writer's name
7. a. Middle East partisan in operation is trapped by eruption
b. Archeologists initially attempt breaking into mummy's ancient tomb
c. Neat, capturing a Trojan king
d. Crosses second entrance from the east
8. a. Persuades one among crew members
b. Foreign land featured in amateur opera
c. Corrupt monarch cut short theater projection
d. Gold-coated cube is so long

Note: The instructions above are for this month's puzzle only. It is assumed that you know how to decipher clues. For a complete introduction to clue-solving send an addressed, stamped long envelope to The Atlantic Puzzler, 77 North Washington Street, Boston, Mass. 02114.

The Atlantic Monthly (ISSN 0276-9077) is published monthly except for a combined issue in July/August by The Atlantic Monthly Group, 77 N. Washington St., Boston, MA 02114 (617-854-7700). Periodicals postage paid at Boston, MA, Toronto, Ont., and additional mailing offices. Printed in U.S.A. Subscription queries: Atlantic Customer Care, Box 37585, Boone, IA 50037-0585 (or call 800-234-2411). Privacy: We make portions of our customer list available to carefully screened companies that offer products and services we believe you may enjoy. If you do not want to receive this information, please write to the Customer Care address above. Advertising and Circulation: 200 Madison Ave., 20th floor, NY, NY 10016 (646-695-8500). Subscriptions: one year \$19.95 in the U.S. and poss.; add \$8.00 in Canada, includes GST (123209926); add \$15.00 elsewhere. Canada Post Publications Mail Agreement 0261327. Back issues: send \$7.50 per copy to The Atlantic, Back Issues, 1900 Industrial Park Dr., Federalsburg, MD 21632 (or call 410-754-8219). Vol. 289, No. 4, April 2002. Copyright © 2002, by The Atlantic Monthly Group. All rights reserved. Postmaster: Send address changes to Atlantic Address Change, Box 37585, Boone, IA 50037-0585.