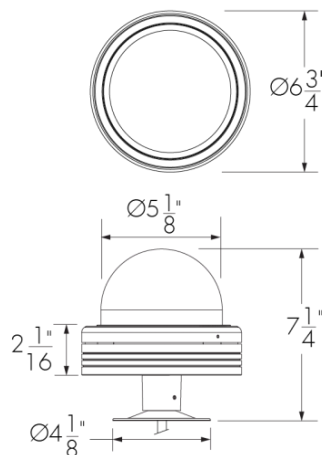


Project Name _____ Qty _____

Type _____ Catalog / Part Number _____



Dome lens & Canopy mounting options shown



Top view

Front view

Photometric summary

	Delivered Output [lm]	Power [W]	Efficacy [lm/W]
ALL CCT	212	11.5	18.4

Photometric performance is measured in compliance with IESNA LM-79-08.

Average Luminance

Angle	45° (Cd/m²)	90° (Cd/m²)
45°	1200	1200
55°	1358	1358
65°	1652	1652
75°	2353	2353
85°	5902	5902

Photometric performance is measured in compliance with IESNA LM-79-08.

Colors and Color Temperatures



Control

ON/OFF DMXrdm

Ratings

IP66 IK10
Dome lens is IK07 rated

Certifications



Description

The 6 in Lumendome Medium is part of a family of direct-view pixel luminaires designed for creative urban concepts such as media facades, low-density video displays and environmental graphics. In contrast to fixed strings and mesh systems, Lumendomes can be arranged in any formation, enabling flexibility and closer integration with architecture. White pixels are available in 4 color temperatures - 2700K, 3000K, 3500K and 4000K - and are controllable via DMX/RDM.

Features

Color and Color Temperature	2700K, 3000K, 3500K, 4000K
Optics	Domed lens, Flat lens
Mounting Options	Canopy mounting option (for mounting on a standard round junction box), Wall mounting option
Power Consumption	12 watts DC power (total consumption varies according to remote power supply efficiency)
Warranty	5-year limited warranty
Options	Corrosion-resistant coating for hostile environments, Flat lens, CE (certification covers European Economic Area)

Performance

Lumen Maintenance	L95 21,000 hrs (Ta 25 °C), L95 13,000 hrs (Ta 40 °C)
Color Consistency	2 SDCM
Color Rendering	CRI 80+

Physical

Housing Material	Low copper content machined aluminum
Lens Material	High impact UV protected polycarbonate
Gasket Material	Silicone
Surface Finish	Electrostatically applied polyester powder coat

Weight	3.41 lbs
---------------	----------

Electrical and control

Voltage	48V DC, remote driver & data supply available for 100-277V AC (not included)
----------------	--

Fixture Cable	Power and data in one cable, 3 ft cable
----------------------	---

Leader Cable Conductor	5C #18-5
-------------------------------	----------

Control	On/Off control, DMX/RDM enabled
----------------	---------------------------------

Resolution (DMX/RDM)	Per fixture, 8-bit or 16-bit
-----------------------------	------------------------------

Accessories (order separately)

Control	DMX/RDM control box
----------------	---------------------

Power supply box	Power supply box
-------------------------	------------------

Control Systems	Lumentone™ 2 (LTN2), Pharos® kit (PHAROS)
------------------------	---

Diagnostic and Addressing Tools	LumenID (LID)
--	---------------

Environmental

Storage Temperature	-40 °F to 185 °F (device must reach start-up temperature value before operating)
----------------------------	--

Start-up Temperature	-13 °F to 122 °F
-----------------------------	------------------

Operating Temperature	-40 °F to 122 °F
------------------------------	------------------

Ingress Protection Rating	IP66, Wet location rated
----------------------------------	--------------------------

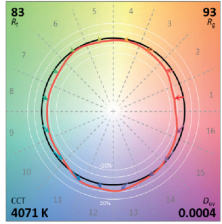
Impact Resistance Rating	IK07 (Dome lens), IK10
---------------------------------	------------------------

Environment	Dry/damp/wet location
--------------------	-----------------------

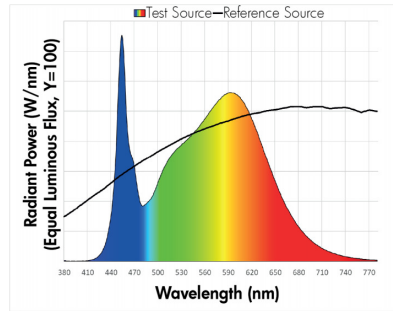
Chromaticity Data

TM-30 - 4000K

CCT	CIE		TM-30	
4000K	R _a	83	R _f	83
	R _g	4	R _g	93



Spectral Power Distribution



Mounting options

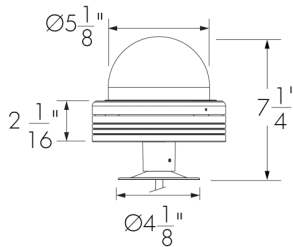
CN - Canopy mounting (for mounting on a standard round junction box)



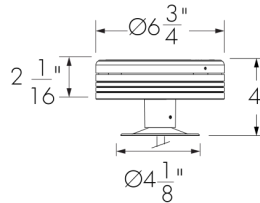
Top view



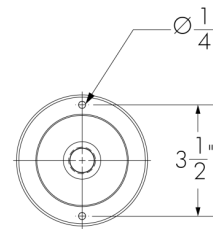
Top view



Front view
Dome lens shown



Front view
Flat lens option shown



Mounting base
screw hole pattern

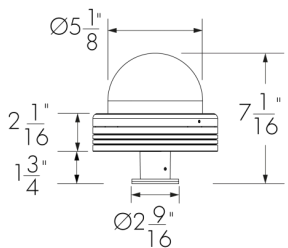
WM - Wall mounting



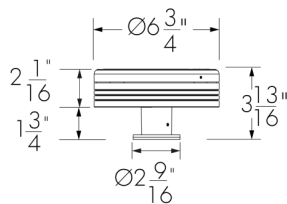
Top view



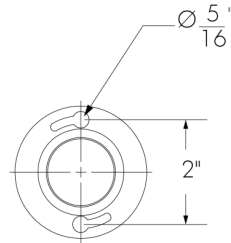
Top view



Front view
Dome lens shown



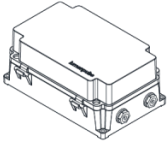
Front view
Flat lens option shown



Mounting base
screw hole pattern

Control and power supply boxes (order separately)

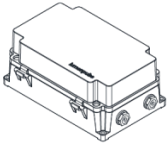
CBX60-100 - DMX/RDM control box



DMX/RDM control box. Up to six low voltage power and data outputs to fixtures or fixture runs. Consult CBX60, CBX100 specification sheet for details.

Power supply and dimming boxes (order separately)

PSX60-100 - Power supply box



Power supply box. Up to six low voltage power outputs to fixtures or fixture runs. Consult PSX60, PSX100 specification sheet for details.

Control systems (order separately)

LTN2 - Lumentone™ 2



Lumentone 2 is a simple pre-programmed DMX 512 controller with a push button rotary dial and live feedback.

PHAROS - Pharos® kit



The Pharos kit, available for 1 or 2 DMX universes, allows for complete control of large lighting installations. 2 DMX universes kit shown.

Diagnostic and addressing tools (order separately)

LID - LumenID



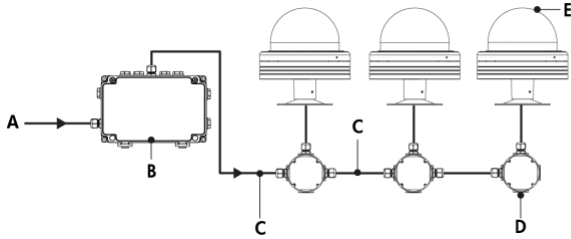
LumenID is a diagnostic and addressing DMX/RDM tool. It must be specified on all DMX applications. Consult LID specification sheet for details.

Typical wiring diagrams

Wiring color code

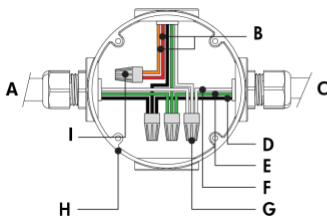
UL Color Code	USE
Green	Ground
Black	Power 48V +
White	Power 48V -
Red/Purple	Data +
Orange	Data -

On/Off Control (NO)



- A** - Power input (100-277V, wiring by others)
- B** - PSX100- 48V
- C** - Power wiring (by others)
- D** - Junction box (by others)
- E** - Lumendome medium

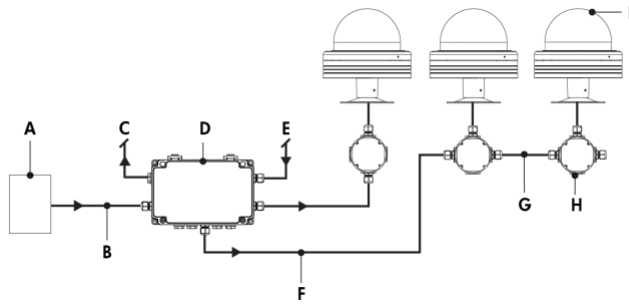
On/Off Control (NO) - wiring detail



- A** - From PSX100 or previous fixture
- B** - Not required
- C** - To fixture
- D** - 48V +
- E** - Ground
- F** - 48V -
- G** - Wire-nuts (by others)
- H** - Junction box (by others)
- I** - Always tie wires together

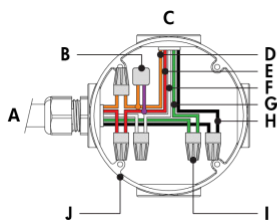
- Maximum distance and quantity of fixtures per PSX100, 48V: maximum of 7 Lumendome medium
- Consult factory for specific applications and maximum fixture count/cable length recommendations.
- 12 watts DC (total consumption varies according to remote power supply efficiency).

Star Layout (DMX/RDM)



- A** - DMX/RDM controller (order separately from Lumenpulse, or by others)
- B** - Data input (Belden 9841 or equivalent, by others)
- C** - Data output to next CBX (optional, not isolated/not boosted)
- D** - CBX100 - 48V
- E** - Power input (100-277V, wiring by others)
- F** - Power and data output to fixture (wiring by others)
- G** - Power and data wiring (by others)
- H** - Junction box (by others)
- I** - Lumendome medium

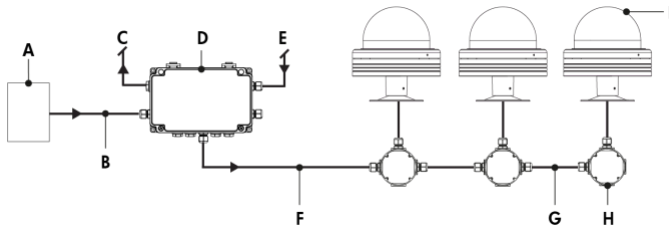
Star Layout (DMX/RDM) - wiring detail



- A** - From CBX or previous fixture
- B** - Lumenterminator (use at the end of each run only)
- C** - To fixture
- D** - Data -
- E** - Data +
- F** - 48V -
- G** - Ground
- H** - 48V +
- I** - Wire-nuts (by others)
- J** - Junction box (by others)

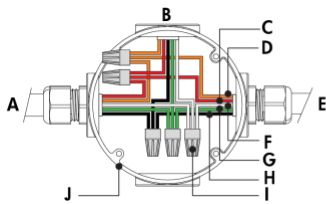
- Consult CBX60 & CBX100 installation instructions for additional wiring details.
- Consult factory for specific applications and maximum fixture count/cable length recommendations.
- The DMX/RDM protocol states a maximum of 32 DMX/RDM enabled fixtures per CBX.
- Each fixture requires 1 DMX address.
- Maximum number of fixtures per run depends on the power supply. For CBX100, 48V: maximum of 7 Lumendome medium.
- DMX terminator is required at the end of each run to maintain data integrity. (6x) DMX lumenterminators included per CBX60 or CBX100. See installation instructions for details.
- 12 watts DC (total consumption varies according to remote power supply efficiency).

Daisy Chain Layout (DMX/RDM)



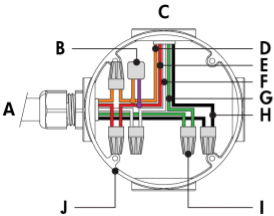
- A** - DMX/RDM controller (order separately from Lumenpulse, or by others)
- B** - Data input (Belden 9841 or equivalent, by others)
- C** - Data output to next CBX (optional, not isolated/not boosted)
- D** - CBX100 - 48V
- E** - Power input (100-277V, wiring by others)
- F** - Power and data output to fixture (wiring by others)
- G** - Power and data wiring (by others)
- H** - Junction box (by others)
- I** - Lumendome medium

DMX/RDM - wiring detail (first or middle of run)



- A** - From CBX or previous fixture
- B** - To fixture
- C** - Data +
- D** - Data -
- E** - To next/from previous fixture
- F** - Power 48V -
- G** - Ground
- H** - Power 48V +
- I** - Wire-nuts (by others)
- J** - Junction box (by others)

DMX/RDM - wiring detail (end of run)



- A** - From CBX or previous fixture
- B** - Lumenterminator
- C** - To fixture
- D** - Data -
- E** - Data +
- F** - 48V -
- G** - Ground
- H** - 48V +
- I** - Wire-nuts (by others)
- J** - Junction box (by others)

- Consult CBX60 & CBX100 installation instructions for additional wiring details.
- Consult factory for specific applications and maximum fixture count/cable length recommendations.
- The DMX/RDM protocol states a maximum of 32 DMX/RDM enabled fixtures per CBX.
- Each fixture requires 1 DMX address.
- Maximum number of fixtures per run depends on the power supply. For CBX100, 48V: maximum of 7 Lumendome medium.
- DMX terminator is required at the end of each run to maintain data integrity. (6x) DMX lumenterminators included per CBX60 or CBX100. See installation instructions for details.
- 12 watts DC (total consumption varies according to remote power supply efficiency).

How to order

Housing	Voltage ⁽²⁾	Color and Color Temperature	Finish	Control	Mounting Options	Options
LMDM Lumendome™ Medium ⁽¹⁾	48V 48V	27K 2700K 30K 3000K 35K 3500K 40K 4000K	BK Black Sandtex® BRZ Bronze Sandtex® SI Silver Sandtex® WH Smooth white CC Custom color and finish (please specify RAL color) ⁽³⁾ ⁽⁴⁾ ⁽⁵⁾	NO On/Off control ⁽⁶⁾ DMX/RDM DMX/RDM enabled ⁽⁷⁾	CN Canopy mounting option ⁽⁸⁾ WM Wall mounting option	CRC Corrosion-resistant coating for hostile environments ⁽⁹⁾ ⁽¹⁰⁾ FTL Flat lens CE CE (certification covers European Economic Area) ⁽¹¹⁾

Notes:

1. Consult factory for products that are BAA-approved (Buy American Act).
2. Remote control and power supply required but not included.
3. Lumenpulse offers a wide selection of RAL CLASSIC (K7) colors with a smooth texture and high-gloss finish. Please consult factory for a list of available K7 colors, other RAL textures and glosses, or to match alternate color charts. Final color matching results may vary.
4. Setup charges apply for RAL colors. Consult factory for details.
5. Longer lead times can be expected for custom RAL color finishes.
6. A PSX60 or PSX100 must be specified.
7. A CBX60 or CBX100 and a LID must be specified.
8. For mounting on a standard round junction box.
9. Use only when exposed to salt spray. This option is not required for normal outdoor exposure.
10. Setup charges apply. Consult factory for details.
11. Consult European specification sheet and installation instructions for CE wiring information.