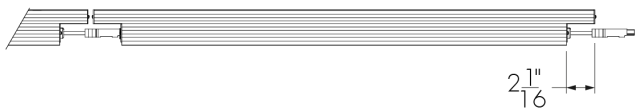
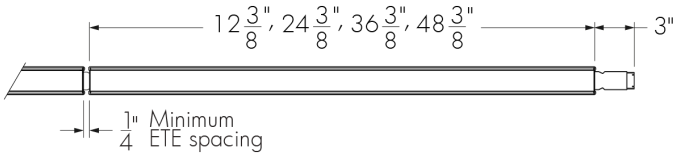


Project Name _____ Qty _____

Type _____ Catalog / Part Number _____



Top view

Front and side views

Photometric Summary

	Delivered output (lm)	Intensity (peak cd)
WW	3,515	5,040
8°x8°	4,042*	64,112*
10°x10°	4,394	40,976
10°x30°	3,752*	25,721*
10°x60°	3,459	13,078
10°x90°	3,503*	7,349*
15°x25°	3,801*	22,667*
30°x30°	3,689*	13,982*
30°x60°	3,425	4,625
35°x35°	3,842*	9,856*
50°x80°	3,691*	3,456*
60°x60°	3,638	3,145
80°x80°	3,807*	2,541*
90°x90°	3,518*	1,890*

Based on HO 4000K, 4ft [1219mm] configuration.
Photometric performance is measured in compliance with IESNA LM-79-08.
*Estimated. Consult website for the latest photometric files.

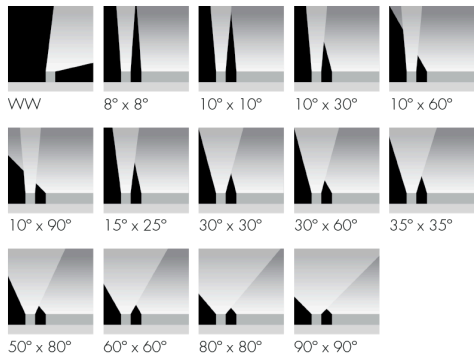
Description

The Lumenfacade Interior is a high-performance interior LED luminaire for grazing or wall washing applications. Featuring second generation LED technology, the luminaire is available in 12 in, 24 in, 36 in or 48 in sections, and can be configured with a number of options including; optics for grazing or flood lighting; a choice of outputs (RO 8.5 W/ft or HO 15.25 W/ft); various color temperatures or static colors; various mounting options, finishes, accessories and controls. The Lumenfacade is also available with a unique asymmetric wallwash distribution, providing exceptional uniformity and brightness for walls and signage.

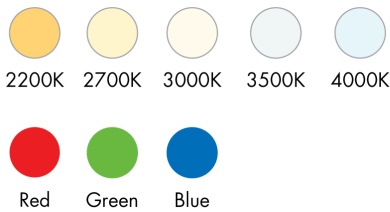
Features

Color and Color Temperature	2200K, 2700K, 3000K, 3500K, 4000K, Red, Green, Blue
Length (Nominal)	12 in, 24 in, 36 in, 48 in
Optics	Asymmetric Wallwash, 8° x 8°, 10° x 10°, 10° x 30°, 10° x 60°, 10° x 90°, 15° x 25°, 30° x 30°, 30° x 60°, 35° x 35°, 50° x 80°, 60° x 60°, 80° x 80°, 90° x 90°
Power Consumption	5 W/ft (meets ASHRAE standards for linear lighting on building facades - not available for 12 in fixture lengths), 8.5 W/ft (RO version), 15.25 W/ft (HO version), Typically 20% higher for 12 in fixture lengths
Warranty	5-year limited warranty
Performance	
Illuminance at Distance	Minimum 1 fc at 114 ft (HO 4000K, 48 in fixture, 10° x 60°, DMX/RDM)
Color Consistency	2 SDCM, 3 SDCM (2200K)
Color Rendering	Minimum CRI 80
Lumen Maintenance	L70 280,000 hrs L95 35,000 hrs

Optics



Colors and Color Temperatures



Control

ON/OFF 0-10V DALI DMX/RDM



Certifications



Physical

Housing Material	Low copper content extruded aluminum
Lens Material	Clear acrylic
Hardware Material	Stainless steel
End Cap Material	Aluminum
Surface Finish	Electrostatically applied polyester powder coat
Weight	12 in: 2.1 lbs 24 in: 3.7 lbs 36 in: 5.3 lbs 48 in: 6.8 lbs

Electrical and Control

Voltage	120 to 277 volts, 347 volts available (consult factory for details)
Fixture Cable	Power and data in one cable, End-to-end configuration standard (factory installed input cable - no jumper cable needed for minimum spacing between two fixtures)
Fixture Cable and Connector Color	Black for Black Sandtex, Bronze Sandtex and Silver Sandtex finishes, White for Smooth White Finish
Leader Cable Conductor	3C #16-3 (NO, LT control), 5C #16-5 (DIM, DALI, ES, DMX/RDM control)
Maximum Cable and Fixture Run Length	252 ft (On/Off, 277V, RO version) 164 ft (On/Off, 277V, HO version)
Control	On/Off Control, Lumentalk, 0-10V Dimming, DALI Dimming, DMX/RDM Enabled
Resolution (DMX/RDM)	Per foot or per fixture (configured with LumenID V3 software), 8-bit or 16-bit

Environmental

Environment	Indoor applications only
Storage Temperature	-40 °F to 185 °F (device must reach start-up temperature value before operating)
Start-up Temperature	-13 °F to 122 °F
Operating Temperature	-40 °F to 122 °F

Accessories (Order Separately)

Optical Accessories	Lumenfacade Interior Radial Louver
Cables	Lumenfacade Interior Leader Cable, Lumenfacade Interior Jumper Cable
Control Boxes	DMX/RDM enabled (Daisy Chain or Star Configuration), Ethernet enabled (Daisy Chain or Star Configuration), Lumentalk Data Bridge
Control Systems	Pharos® Lighting Control Kit (PHAROS), Lumenscene™ (LSC)
Diagnostic and Addressing Tools	LumenID (LID), LumentalkID (LIDLT)

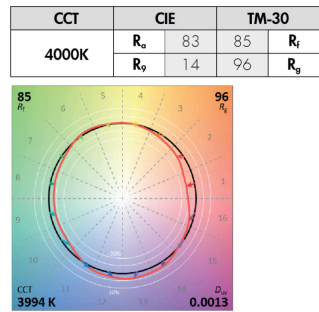
Important

Virtual Patent Marking Notice

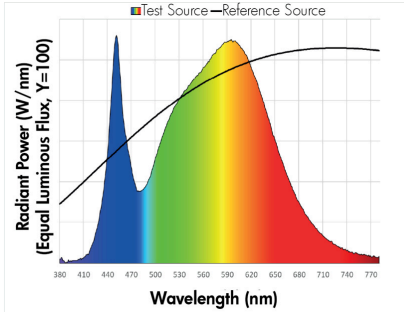
This website (<https://www.lmpg.com/patents-trademarks>) is provided to satisfy the virtual patent marking provisions of applicable jurisdictions. Some products listed may be covered by additional patents not referenced here.

Chromaticity Data

TM-30 - 4000K

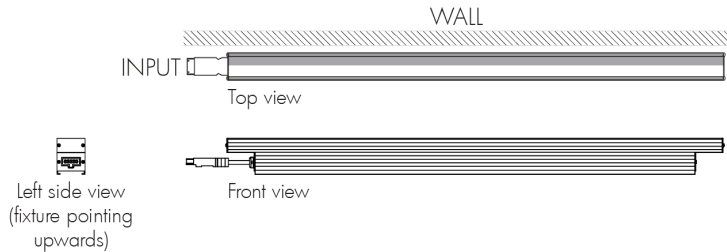


Spectral Power Distribution

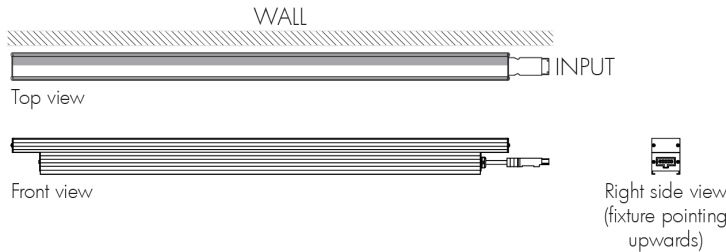


Asymmetric Wallwash Optic Details

WWLF - Asymmetric Wallwash Optic, Left Feed



WWRF - Asymmetric Wallwash Optic, Right Feed

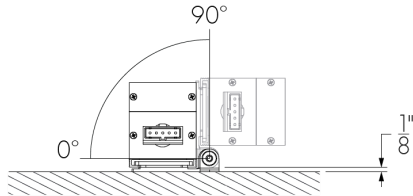


- Always position frosted side toward the wall.
- Fixture's feeding side is based on uplight installations. Feeding sides are reversed when fixture is used in a downlight application.
- Recommended setback from wall is 1/10 of the wall height. Example: 2 ft setback for a 20 ft wall.

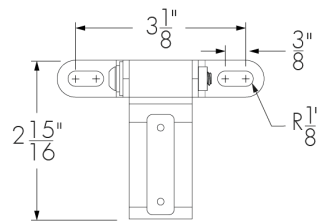
Mounting Options

Surface Mount

SAM - Slim Adjustable Mounting

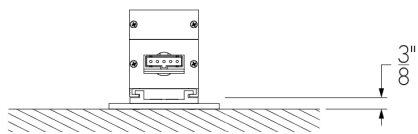


SAM - Mounting Hole Pattern

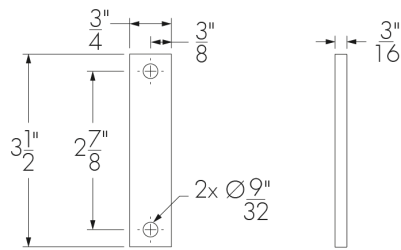


Not suitable when fixture is exposed to wind.

UMP - Fixed Mounting

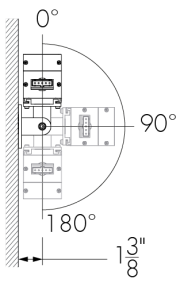


UMP - Mounting Hole Pattern

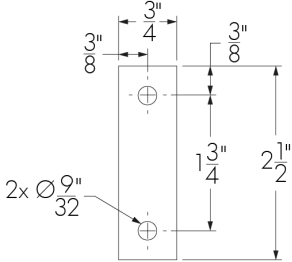


Wall Mount

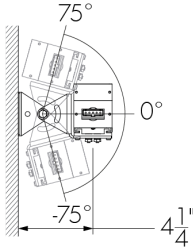
UMAS - Universal Adjustable Mounting



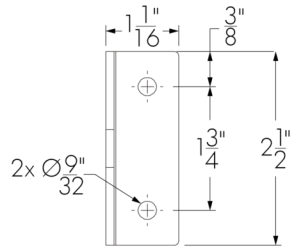
UMAS - Mounting Hole Pattern



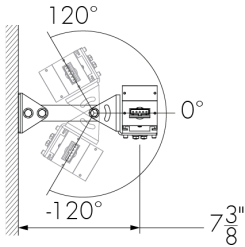
WAM2 - Adjustable Wall Mounting 2 in



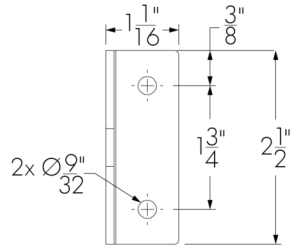
WAM2 - Mounting Hole Pattern



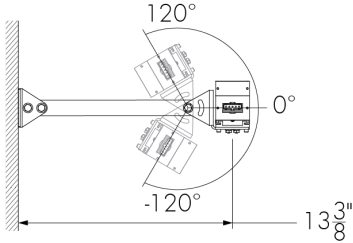
WAM6 - Adjustable Extended Arm Mounting 6 in



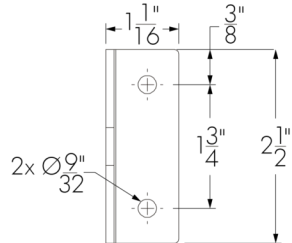
WAM6 - Mounting Hole Pattern



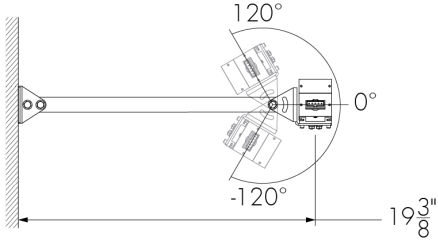
WAM12 - Adjustable Extended Arm Mounting 12 in



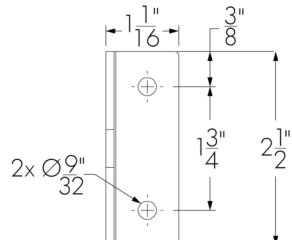
WAM12 - Mounting Hole Pattern



WAM18 - Adjustable Extended Arm Mounting 18 in

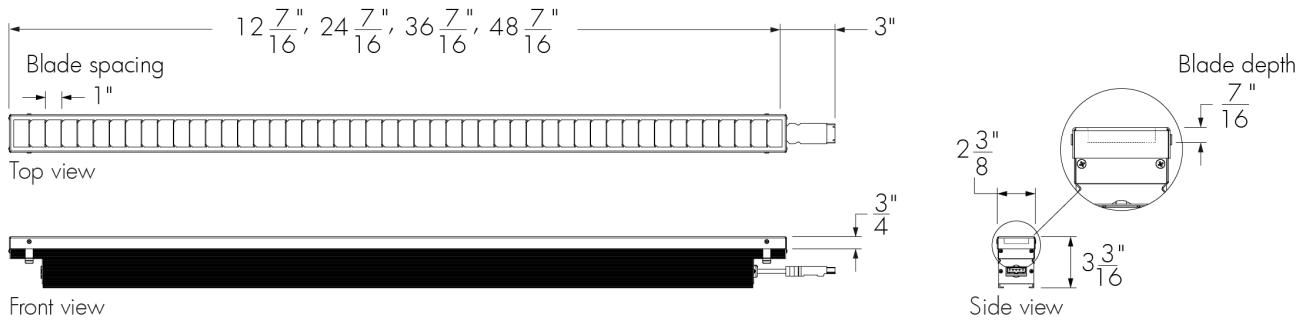


WAM18 - Mounting Hole Pattern



Optical Accessories (Order Separately)

LOGIRD - Radial Louver For Lumenfacade Interior



LOGIRD-LENGTH-FINISH

Please specify:

LENGTH: 12 in, 24 in, 36 in or 48 in; **FINISH:** BK - Black Sandtex®, BRZ - Bronze Sandtex®, SI - Silver Sandtex®, WH - Smooth white or CC - custom color and finish (please specify RAL color)

- The addition of a louver will affect beam distribution. Consult factory for application support.
- Not suitable for asymmetric wallwash optic.

Cables (Order Separately)

LOGILC - Leader Cable For Lumenfacade Interior



LOGILC-CERTIFICATION-CONTROL-LENGTH-CABLE COLOR

Please specify:

CERTIFICATION: UL or CE; **CONTROL:** NO - non-dimming or DATA - dimming/data; **LENGTH:** 10 ft, 25 ft, 50 ft, 100 ft, 150 ft or 200 ft; **CABLE COLOR:** black or white (connectors are the same color as the specified cable color)

- Consult Lumenfacade Interior leader cable specification sheet for details.

LOGIJC - Jumper Cable For Lumenfacade Interior



LOGIJC-CERTIFICATION-CONTROL-LENGTH-CABLE COLOR

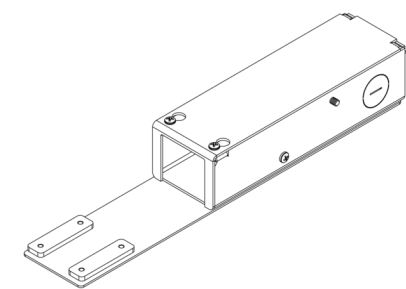
Please specify:

CERTIFICATION: UL or CE; **CONTROL:** NO - non-dimming or DATA - dimming/data; **LENGTH:** 1 ft to 30 ft (available in 1 ft increments) or 50 ft; **CABLE COLOR:** black or white (connectors are the same color as the specified cable color)

- Consult Lumenfacade Interior jumper cable specification sheet for details.

Wiring Compartment (Order Separately)

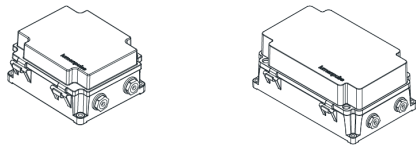
WC-120/277-LOGI-WH - Wiring Compartment



The Wiring Compartment is pre-wired with a leader cable, allowing the quick connection of conduits. Consult WC specification sheet for details.

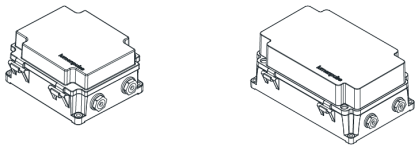
Control Boxes (Order Separately)

CBX-DMX/RDM - DMX/RDM Enabled (Daisy Chain or Star Configuration)



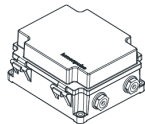
DMX/RDM control box. Up to six power and data outputs to fixtures or fixture runs. Consult CBX specification sheet and installation instructions for details. Lumenterminators provided with CBX (2x for Daisy Chain configuration, 6x for Star configuration), consult factory to order spares.

CBX-ENET - Ethernet Enabled (Daisy Chain or Star Configuration)



Ethernet control box. Up to four power and data outputs to fixture or fixture runs. Consult Ethernet CBX specification sheet and installation instructions for details.

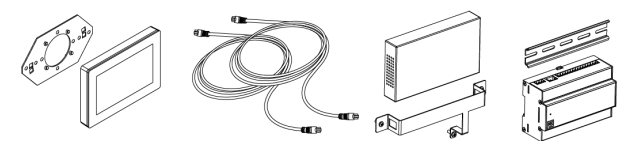
LDB - Lumentalk Data Bridge



Lumentalk Data Bridge, 0-10V or DMX output. Consult LDB specification sheet for details.

Control Systems (Order Separately)

PHAROS - Pharos® Designer Lighting Control Kit



The Pharos Designer Lighting Contol Kit, available for 1 or 2 DMX universes, allows for complete control of large lighting installations.

Diagnostic And Addressing Tools (Order Separately)

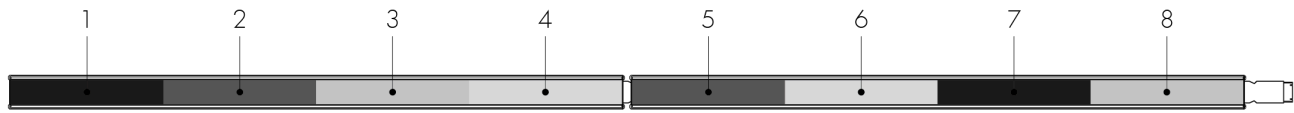
LID - LumenID



LumenID is a diagnostic and addressing DMX/RDM tool. It must be specified on all DMX applications. Consult LID specification sheet for details.

Resolution Details

DMX/RDM Control, Resolution Per Foot: Each 12 in Section is Addressed Independently
DMX Addresses:



DMX/RDM Control, Resolution Per Fixture: Each Fixture is Addressed Independently
DMX Addresses:



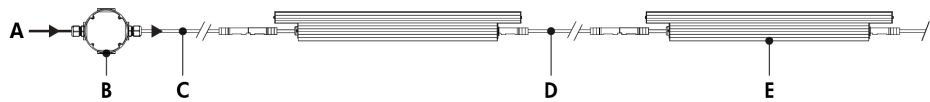
- 48 in fixtures shown.
- Applicable for DMX/RDM control option only. Fixture resolution can be configured on-site within the LumenID V3 software. A DMX/RDM enabled CBX is required.

Typical Wiring Diagrams

Wiring Color Code

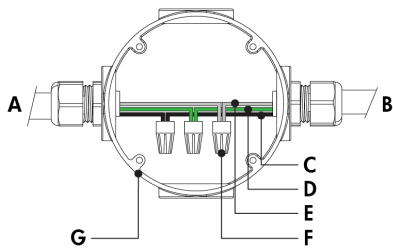
UL Color Code	USE
Green	Ground
Black	Line
White	Line/Neutral
Red or Purple	0-10V / Data +
Orange	0-10V / Data -

On/Off Control (NO)



- A - Power input (120-277V, wiring by others)
- B - Junction box (by others)
- C - Leader cable (LOGiLC)
- D - Jumper cable (LOGiJC) (optional)
- E - Lumenfacade Interior

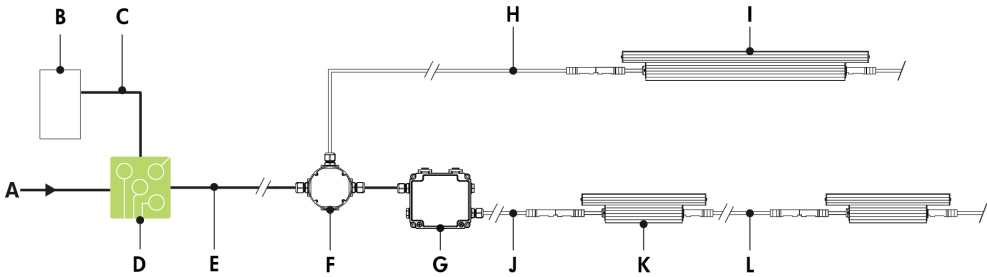
On/Off Control (NO) - Wiring Detail



- A - Power input
- B - To fixture
- C - Line
- D - Ground
- E - Line/Neutral
- F - Wire-nuts (by others)
- G - Junction box (by others)

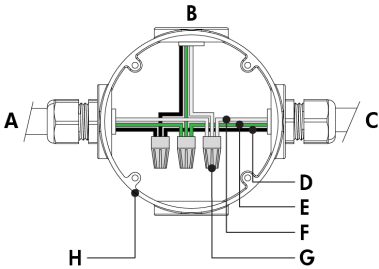
- Consult factory for specific applications and maximum fixture count/cable length recommendations.
- ASHRAE version (not available for 12 in fixture lengths): 5 W/ft; Regular Output version: 8.5 W/ft; High Output version: 15.25 W/ft.

Lumentalk (LT)



- A - Power input (120-277V AC, wiring by others)
- B - Dimmer/controller (order separately from Lumenpulse, or by others)
- C - Data wiring (by others)
- D - Lumentranslator 2 (LTL2-DIM, -DMX, -TRIAC, -DALI)
- E - Power wiring (by others)
- F - Junction box (by others)
- G - Lumentalk Data Bridge (LDB-DIM or LDB-DMX)
- H - Leader cable (LOGiLC)
- I - Lumenfacade Interior (24 in, 36 in or 48 in fixture lengths)
- J - Leader cable (LOGiLC-DATA)
- K - Lumenfacade Interior 12 in
- L - Jumper cable (LOGiJC-DATA) (optional)

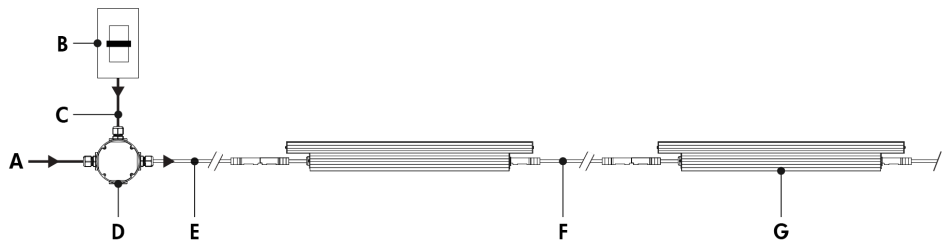
Lumentalk (LT) - Wiring Detail



- A - Power input (control over power line via Lumentalk system) or from previous fixture
- B - To fixture
- C - To Lumentalk Data Bridge (for run lengths with 12 in fixtures)
- D - Line
- E - Ground
- F - Line/Neutral
- G - Wire-nuts (by others)
- H - Junction box (by others)

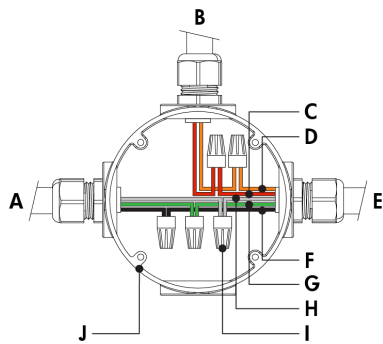
- Consult factory for specific applications and maximum fixture count/cable length recommendations.
- Lumentalk Data Bridge required for 12 in fixture lengths, see LDB installation instructions for details.
- For applications with all fixtures controlled as 1 zone: fixtures and Lumentalk Data Bridge must be specified as DIM. Maximum of 10 fixtures per LDB-DIM, consult factory for applications that require additional capabilities.
- For applications with fixtures controlled individually: fixtures and Lumentalk Data Bridge must be specified as DMX, 2-step commissioning process: 1 - DMX/RDM system using LumenID software and a LID, 2 - Lumentalk system using LumentalkID software and a LID-LT. Maximum of 32 fixtures per LDB-DMX. Consult factory for details.
- For DMX applications: 1 DMX controller per Lumentalk network, maximum of 48 DMX channels per Lumentalk network (minimum step transition update rate is 1 second, minimum fade time between two colors is 1 minute). Consult factory for applications that require additional capabilities.
- Maximum of 1 transmitter (Lumentranslator or Lumenlink) per system.
- No third party fixtures allowed on the same circuit.
- Consult factory for DALI Lumentalk applications.
- 1% minimum dimming value.
- ASHRAE version (not available for 12 in fixture lengths): 5 W/ft; Regular Output version: 8.5 W/ft; High Output version: 15.25 W/ft.

0-10V Dimming (DIM)



- A - Power input (120-277V, wiring by others)
- B - Dimmer (by others)
- C - Data wiring (by others)
- D - Junction box (by others)
- E - Leader cable (LOGiLC)
- F - Jumper cable (LOGiJC) (optional)
- G - Lumenfacade Interior

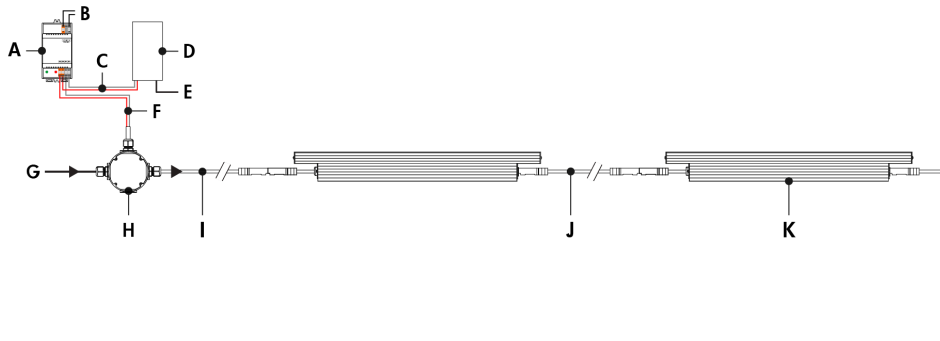
0-10V Dimming (DIM) - Wiring Detail



- A - Power input
- B - From dimmer (by others)
- C - 0-10 V +
- D - 0-10 V -
- E - To fixture
- F - Line
- G - Ground
- H - Neutral
- I - Wire-nuts (by others)
- J - Junction box (by others)

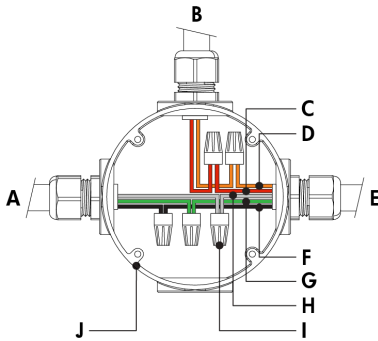
- Consult factory for specific applications and maximum fixture count/cable length recommendations.
- 0-10V mA ratings: passive dimmer (Current Sink): 3 mA per fixture, active dimmer (Current Source): 0.5 mA per fixture.
- 1% minimum dimming value.
- ASHRAE version (not available for 12 in fixture lengths): 5 W/ft; Regular Output version: 8.5 W/ft; High Output version: 15.25 W/ft.

DALI Dimming (DALI)



- A** - DALI bus power supply (by others)
- B** - Power input for DALI bus power supply (wiring by others)
- C** - Data output to DALI controller (wiring by others)
- D** - DALI controller (by others)
- E** - Power input for DALI controller (wiring by others)
- F** - Data output to fixture (wiring by others)
- G** - Power input (120-277V, wiring by others)
- H** - Junction box (by others)
- I** - Leader cable (LOGiLC)
- J** - Jumper cable (LOGiJC) (optional)
- K** - Lumenfacade Interior

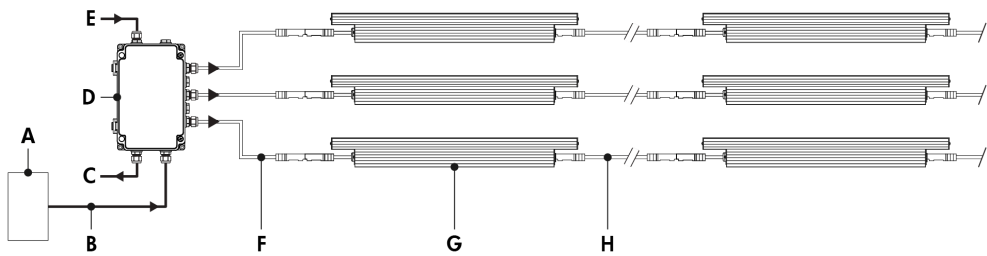
DAI Dimming (DAI) - Wiring Detail



- A** - Power input
- B** - From DALI controller (by others)
- C** - DA +
- D** - DA -
- E** - To fixture
- F** - Line
- G** - Ground
- H** - Neutral
- I** - Wire-nuts (by others)
- J** - Junction box (by others)

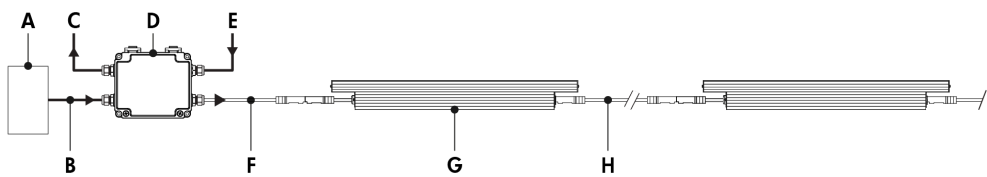
- Consult factory for specific applications and maximum fixture count/cable length recommendations.
- Maximum of 64 DALI fixtures per DALI loop.
- 1% minimum dimming value.
- ASHRAE version (not available for 12 in fixture lengths): 5 W/ft; Regular Output version: 8.5 W/ft; High Output version: 15.25 W/ft.
- Commissioning may be required based on the selection of 3rd party DALI controller. Controller and commissioning provided by others.

Star Layout (DMX/RDM)



- A - DMX/RDM controller (order separately from Lumenpulse, or by others)
- B - Data input (Belden 9841 or equivalent, by others)
- C - Data output to next CBX (optional, not isolated/not boosted)
- D - CBX-ST
- E - Power input (120-277V, wiring by others)
- F - Leader cable (LOGiLC)
- G - Lumenfacade Interior
- H - Jumper cable (LOGiJC) (optional)

Daisy Chain Layout (DMX/RDM)



- A - DMX/RDM controller (order separately from Lumenpulse, or by others)
- B - Data input (Belden 9841 or equivalent, by others)
- C - Data output to next CBX (optional, not isolated/not boosted)
- D - CBX-DS
- E - Power input (120-277V, wiring by others)
- F - Leader cable (LOGiLC)
- G - Lumenfacade Interior
- H - Jumper cable (LOGiJC) (optional)

Maximum Run of Fixtures, Lumenfacade® LOGI ASHRAE White & Static Colors 5 W/ft

Voltage	120V	240V	277V
Maximum Run of Fixtures*	128ft	128ft	128ft

Maximum Run of Fixtures, Lumenfacade® LOGI RO White & Static Colors 8,5 W/ft

Voltage	120V	240V	277V
Maximum Run of Fixtures*	120ft	128ft	128ft

Maximum Run of Fixtures, Lumenfacade® LOGI HO White & Static Colors 15,25 W/ft

Voltage	120V	240V	277V
Maximum Run of Fixtures*	68ft	80ft	88ft

Based on 15A maximum, 50ft leader cable.
*Example: 120V = 120ft maximum run of end to end fixtures (30 fixtures maximum for 4ft LOGI RO).

Based on 15A maximum, 50 ft leader cable.

- Consult CBX installation instructions for additional wiring details.
- Consult factory for specific applications and maximum fixture count/cable length recommendations. Maximum run length calculations are typically based on 48 in fixtures.
- The DMX/RDM protocol states a maximum of 32 DMX/RDM enabled fixtures on any single run.
- Maximum of 4 DMX/RDM repeaters/CBX cascading in line.
- Maximum of 6 outputs per CBX-ST; maximum of 1 output per CBX-DS.
- Each fixture requires 1 DMX address.
- 1% minimum dimming value.
- ASHRAE version (not available for 12 in fixture lengths): 5 W/ft; Regular Output version: 8.5 W/ft; High Output version: 15.25 W/ft.

How to Order

Housing ⁽²⁾	Voltage ⁽³⁾	Length	Color and Color Temperature ⁽⁵⁾	Optic	Mounting Options	Finish	Control	Buy America.n Act
LOGI ASHRAE Lumenfacade™ Interior, 5 W/ft, ASHRAE compliant ⁽¹⁾ LOGI RO Lumenfacade™ Interior Regular Output, 8.5 W/ft LOGI HO Lumenfacade™ Interior High Output, 15.25 W/ft	120 120 Volts	12 12 3/8 in (2.1 lbs) ⁽²⁾ ⁽⁴⁾	22K 2200K	WWLF Asymmetric Wallwash, left feed	SAM Slim Adjustable Mounting	BK Black Sandtex®	NO On/Off Control	BAA Buy America.n ⁽¹⁴⁾
	208 208 Volts	24 24 3/8 in (3.7 lbs)	27K 2700K	WWRF Asymmetric Wallwash, right feed	UMP Fixed Mounting	BRZ Bronze Sandtex®	LT Lumentalk ⁽⁴⁾ ⁽¹¹⁾ ⁽¹²⁾	
	220 220 Volts		30K 3000K					
	240 240 Volts	36 36 3/8 in (5.3 lbs)	35K 3500K	8x8 8° x 8° ⁽⁷⁾	UMAS Universal Adjustable Mounting	SI Silver Sandtex®	DIM 0-10V Dimming	
			40K 4000K	10x10 10° x 10° ⁽⁷⁾				
	277 277 Volts	48 48 3/8 in (6.8 lbs)	RD Red ⁽⁶⁾ GR Green ⁽⁶⁾ BL Blue ⁽⁶⁾	10x30 10° x 30°	WAM12 Adjustable Extended Arm Mounting 12 in WAM6 Adjustable Extended Arm Mounting 6 in WAM2 Adjustable Wall Mounting 2 in WAM18 Adjustable Extended Arm Mounting 18 in	WH Smooth White CC Custom Color & Finish ⁽⁸⁾ ⁽⁹⁾ ⁽¹⁰⁾	DMX/RDM DMX/RDM Enabled Dimming ⁽¹³⁾	
				10x60 10° x 60°				
				10x90 10° x 90°				
				15x25 15° x 25°				
				30x30 30° x 30°				
				30x60 30° x 60°				
				35x35 35° x 35°				
				50x80 50° x 80°				
				60x60 60° x 60°				
				80x80 80° x 80°				
				90x90 90° x 90				

- Notes:
1. ASHRAE version not available for 12 in fixture lengths.

2. Power consumption is typically 20% higher for 12 in fixture lengths.

3. 347 volts available, consult factory for details.

4. To connect 12 in fixture lengths to the Lumentalk system, DIM or DMX/RDM must be specified as the control option, and a Lumentalk Data Bridge (LDB) is required. See the typical wiring diagrams in the specification sheet for details.

5. Consult factory for availability of static Royal Blue, 6500K and 90+ CRI.

6. Static colors made to order 8-10 weeks.

7. For best results use with HO fixtures at a 6 in setback from surface. Contact factory for application support.

8. Lumenpulse offers a wide selection of RAL CLASSIC (K7) colors with a smooth texture and high-gloss finish. Please consult factory for a list of available K7 colors, other RAL textures and glosses, or to match alternate color charts. Final color matching results may vary.

9. Setup charges apply for RAL colors. Consult factory for details.

10. Longer lead times can be expected for custom RAL color finishes.

11. Available for 24 in, 36 in and 48 in fixture lengths only.

12. A Lumentranslator 2 (LTL2) and LumenID (LID) must be specified for Lumentalk applications. Consult Lumentranslator 2 and Lumentalk pages and specification sheets for details.

13. A control box (CBX) and LumenID (LID) must be specified.

14. Contact your Lumenpulse Sales Representative for more information on order volume details.