

Project Name

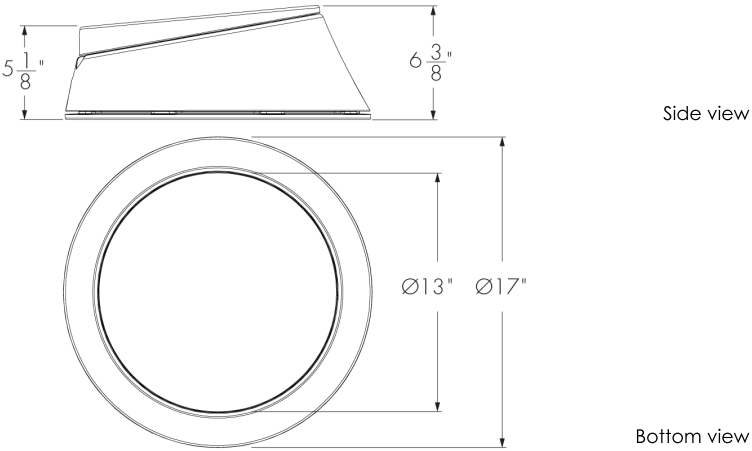
Qty

Type

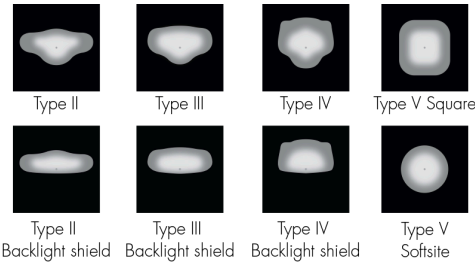
Catalog / Part Number



Shown with Side-Mount Arm PU8 Arm Style with S1X Arm Configuration



Distributions



Colors and Color Temperatures



Control

ON/OFF 0-10V

Rating

IP66 (optical chamber)

Certifications



Description

The Lumenicon Area Medium creates a consistent aesthetic while illuminating city streets, local roads, residential streets, parking lots and laneways. An innovative, toolless opening system makes the plug-and-play components easy to access. IP66 rated with phenomenal heat dissipation; the Lumenicon Area Medium is ready to take it to the streets (or parking lots, or building sides, or onramps, or...).

Features

|                             |   |
|-----------------------------|---|
| Color and Color Temperature | 2200K, 2700K, 3000K, 3500K, 4000K, 5700K  |
| Distributions               | Type II, Type III or Type IV (with or without backlight shield), Type 5 square and Type V Softsite  |
| 3G Vibration Rated          | Meets 3G ANSI C136.31-2010 vibration standard for bridge applications   |
| Options                     | Corrosion-Resistant Coating for Hostile Environments, Surge Protector, 5-Pin Receptacle With or Without Shorting Cap, 7-Pin Receptacle With or Without Shorting Cap |
| Mounting Options            | Side Overlap (2 3/8 in Tenon)   |
| Warranty                    | 5-year limited warranty   |

Performance

|                         |   |
|-------------------------|---|
| Output (Nominal Lumens) | Minimum 3000lm / Maximum 20000lm  |
| Color Rendering         | 3 SDCM for CRI 70+ and 2 SDCM for CRI 80+                                       |
| Lumen Maintenance       | TM-21 L70 527,000 hrs (projected, Ta 77 °F), 36,000 hrs (reported, Ta 77 °F)    |
| DarkSky                 | DarkSky compliant (2200K, 2700K and 3000K color temperatures, BUG rating of U0) |

Physical

|                  |  |
|------------------|--|
| Housing Material | Die cast low copper 360 aluminum alloy |
|------------------|--|

|                     |  |
|---------------------|--|
| Lens Material       | Optical Tempered Clear Glass (Clearsite Lens), Optical tempered opal glass (Softsite lens)           |
| Dual-Color Option   | Black Sandtex Fixture/Silver Sandtex Cap and Ring, Silver Sandtex Fixture/Black Sandtex Cap and Ring |
| Closure system      | Magnetic closure   |
| Installation system | Bubble level , U-Clamps for 2 3/8 in tenon, Adjustment scale -4.5° to 4.5° (1.5° increments)         |
| Weight              | 32 lbs   |
| EPA                 | 0.43 ft²   |

Electrical and Control

|         |  |
|---------|--|
| Voltage | 120 Volts, 208 Volts, 240 Volts, 277 Volts, 347 Volts, 480 Volts |
| Control | On/Off Control, 0-10V Dimming                                    |

Environmental

|                           |   |
|---------------------------|---|
| Storage Temperature       | -40 °F to 122 °F (device must reach start-up temperature value before operating)  |
| Start-up Temperature      | -40 °F to 104 °F (-13 °F to 104 °F for 120V combined with M80, L170, L30 Softsite, L50 Softsite or L70 Softsite output) |
| Operating Temperature     | -40 °F to 104 °F (-13 °F to 104 °F for 120V combined with M80, L170, L30 Softsite, L50 Softsite or L70 Softsite output) |
| Ingress Protection Rating | IP66 (optical chamber)  |
| Environment               | Dry/damp/wet location   |

Decorative arms (Order Separately, Consult Related Specification Sheets for Details)

|                            |  |
|----------------------------|--|
| Compatible decorative arms | Side-Mount Decorative Arm: SO2-Side Overlap (2 3/8 in Tenon) Luminaire Mounting Option with PU2, PU4, PU5, PU8, CS12 and CS13 Arm Style. |
|----------------------------|--|

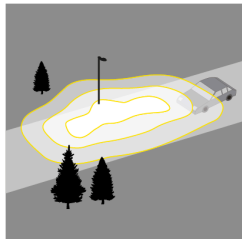
Important

Virtual Patent Marking Notice

This website (<https://www.lmpg.com/patents-trademarks>) is provided to satisfy the virtual patent marking provisions of applicable jurisdictions. Some products listed may be covered by additional patents not referenced here.

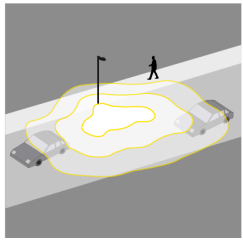
## Photometric Information

## Type II, 4000K, CRI 70+



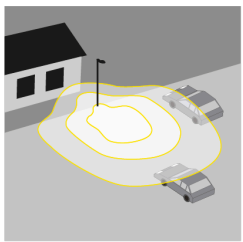
| Nominal output<br>[lm] | Typical delivered<br>output [lm] | Efficiency<br>(lm/W) | BUG Rating |    |    | Typical maximum power<br>120/277V (W) |
|------------------------|----------------------------------|----------------------|------------|----|----|---------------------------------------|
| B                      | U                                | G                    |            |    |    |                                       |
| <b>S40</b>             | 3868                             | 125                  | 1          | 0  | 1  | 31                                    |
| <b>S60</b>             | 5963                             | 108                  | 2          | 0  | 2  | 55                                    |
| <b>M80</b>             | 7896                             | 123                  | 2          | 0  | 2  | 64                                    |
| <b>M110</b>            | 10797                            | 117                  | 2          | 0  | 2  | 92                                    |
| <b>M150</b>            | 14342                            | 109                  | 3          | 0  | 3  | 132                                   |
| <b>L170</b>            | 16115*                           | 110*                 | 3*         | 0* | 3* | 146                                   |
| <b>L200</b>            | 19338                            | 105                  | 3          | 0  | 3  | 185                                   |

## Type III, 4000K, CRI 70+



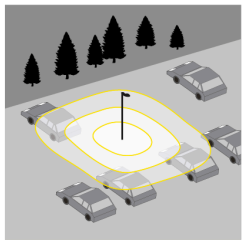
| Nominal output<br>[lm] | Typical delivered<br>output [lm] | Efficiency<br>(lm/W) | BUG Rating |    |    | Typical maximum power<br>120/277V (W) |
|------------------------|----------------------------------|----------------------|------------|----|----|---------------------------------------|
| B                      | U                                | G                    |            |    |    |                                       |
| <b>S40</b>             | 4046                             | 131                  | 1          | 0  | 1  | 31                                    |
| <b>S60</b>             | 6237                             | 113                  | 1          | 0  | 1  | 55                                    |
| <b>M80</b>             | 8260                             | 129                  | 2          | 0  | 2  | 64                                    |
| <b>M110</b>            | 11295                            | 123                  | 2          | 0  | 2  | 92                                    |
| <b>M150</b>            | 15004                            | 114                  | 3          | 0  | 3  | 132                                   |
| <b>L170</b>            | 16858*                           | 115*                 | 3*         | 0* | 3* | 146                                   |
| <b>L200</b>            | 20230                            | 109                  | 3          | 0  | 3  | 185                                   |

## Type IV, 4000K, CRI 70+



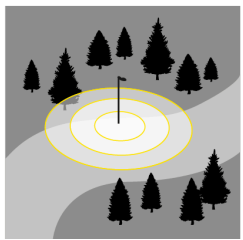
| Nominal output<br>[lm] | Typical delivered<br>output [lm] | Efficiency<br>(lm/W) | BUG Rating |    |    | Typical maximum power<br>120/277V (W) |
|------------------------|----------------------------------|----------------------|------------|----|----|---------------------------------------|
| B                      | U                                | G                    |            |    |    |                                       |
| <b>S40</b>             | 3633                             | 117                  | 1          | 0  | 1  | 31                                    |
| <b>S60</b>             | 5601                             | 102                  | 2          | 0  | 2  | 55                                    |
| <b>M80</b>             | 7418                             | 116                  | 2          | 0  | 2  | 64                                    |
| <b>M110</b>            | 10142                            | 110                  | 3          | 0  | 3  | 92                                    |
| <b>M150</b>            | 13473                            | 102                  | 3          | 0  | 3  | 132                                   |
| <b>L170</b>            | 15138*                           | 104*                 | 3*         | 0* | 3* | 146                                   |
| <b>L200</b>            | 18166                            | 98                   | 3          | 0  | 3  | 185                                   |

## Type V Square, 4000K, CRI 70+



| Nominal output<br>[lm] | Typical delivered<br>output [lm] | Efficiency<br>(lm/W) | BUG Rating |    |    | Typical maximum power<br>120/277V (W) |
|------------------------|----------------------------------|----------------------|------------|----|----|---------------------------------------|
| B                      | U                                | G                    |            |    |    |                                       |
| <b>S40</b>             | 3922                             | 127                  | 2          | 0  | 1  | 31                                    |
| <b>S60</b>             | 6047                             | 110                  | 3          | 0  | 1  | 55                                    |
| <b>M80</b>             | 8008                             | 125                  | 3          | 0  | 2  | 64                                    |
| <b>M110</b>            | 10949                            | 119                  | 3          | 0  | 2  | 92                                    |
| <b>M150</b>            | 14544                            | 110                  | 4          | 0  | 2  | 132                                   |
| <b>L170</b>            | 16342*                           | 112*                 | 4*         | 0* | 2* | 146                                   |
| <b>L200</b>            | 19610                            | 106                  | 4          | 0  | 2  | 185                                   |

## Type V Softsite, 4000K, CRI 70+



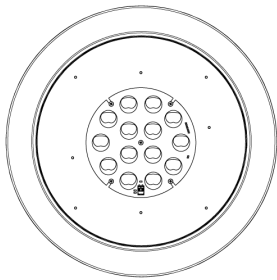
| Nominal output<br>[lm] | Typical delivered<br>output [lm] | Efficiency<br>(lm/W) | BUG Rating |   |   | Typical maximum power<br>120/277V (W) |
|------------------------|----------------------------------|----------------------|------------|---|---|---------------------------------------|
| B                      | U                                | G                    |            |   |   |                                       |
| <b>L30</b>             | 2,889                            | 63                   | 1          | 0 | 1 | 46                                    |
| <b>L50</b>             | 5,602                            | 58                   | 2          | 0 | 1 | 97                                    |
| <b>L70</b>             | 7,616                            | 52                   | 2          | 0 | 1 | 146                                   |

\*Photometric performance is measured in compliance with IESNA LM-79-24. Due to rapid and continuous advance in LED technology, photometric information is subject to change without notice.

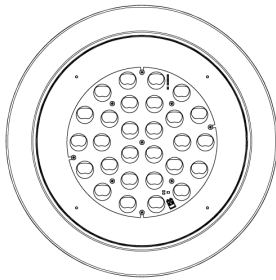
Optical System

LED board size

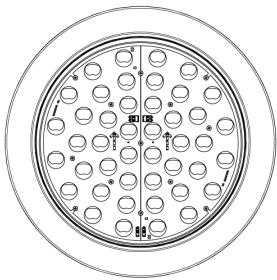
Small (4000lm to 6000lm)



Medium (8000lm to 15000lm)



Large (17000lm to 20000lm)



Type V Softsite is available with large LED board only (3000lm to 7000lm).

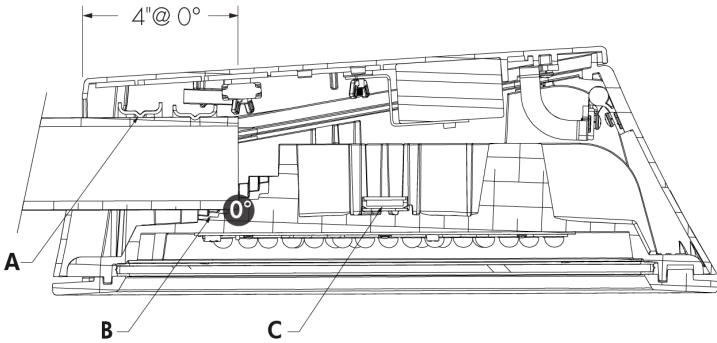
Backlight Shield\*



- \*Small, Medium and Large LED boards size have the same full coverage backlight shield pieces.
- \*Backlight shield available with Type II, Type III and Type IV only.
- \*Backlight shield is factory installed.

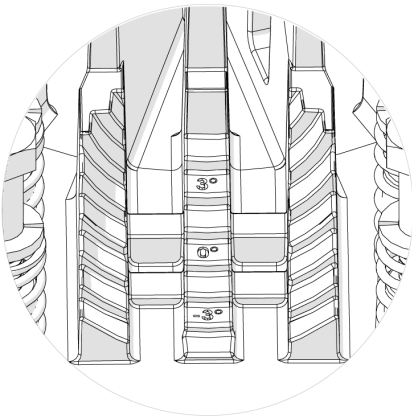
Installation System

Use Bubble Level And Adjustment Scale To Install Luminaire Parallel To The Ground



- A - U-Clamps for 2 3/8 in tenon
- B - Adjustment scale -4.5° to 4.5° (1.5° increments)
- C - Bubble level

Adjustment Scale

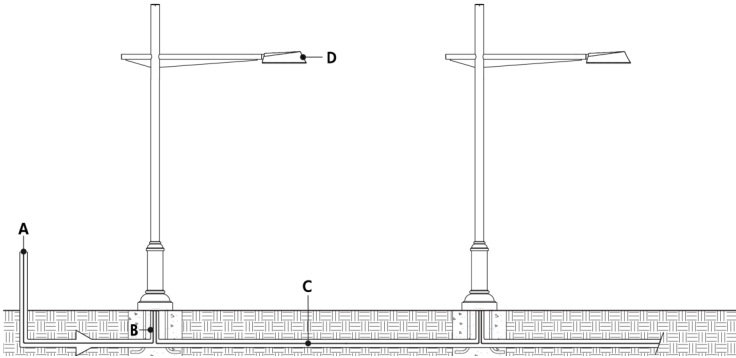


Typical Wiring Diagrams

Wiring Color Code

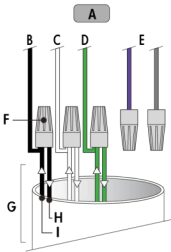
| Color | Black | White        | Green  | Purple | Gray   |
|-------|-------|--------------|--------|--------|--------|
| Use   | Line  | Line/Neutral | Ground | 0-10V+ | 0-10V- |

On/Off Control (NO)



- A - Power input (120-480V, wiring by others)
- B - Conduit (by others)
- C - Power wiring (by others)
- D - Lumenicon Area Medium

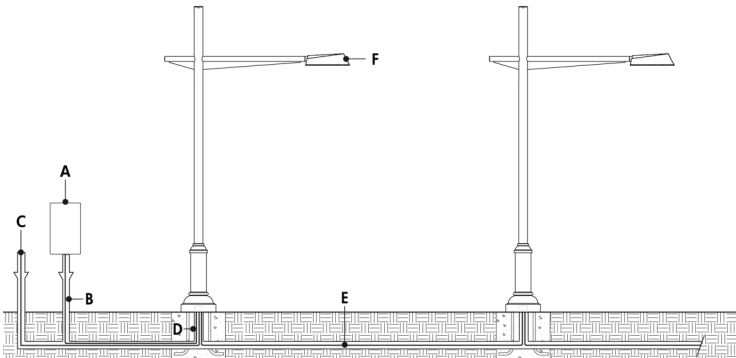
On/Off Control (NO) - Wiring Detail



- A - To fixture
- B - Line
- C - Line/Neutral
- D - Ground
- E - Not required
- F - Wire-nuts (by others)
- G - Conduit (by others)
- H - To next fixture
- I - Power input or from previous fixture

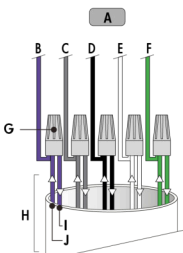
- Consult factory for specific applications and maximum fixture count/cable length recommendations.

0-10V Dimming (DIM)



- A - Dimmer (by others)
- B - Data wiring (by others)
- C - Power input (120-480V, wiring by others)
- D - Conduit (by others)
- E - Power and data wiring (by others)
- F - Lumenicon Area Medium

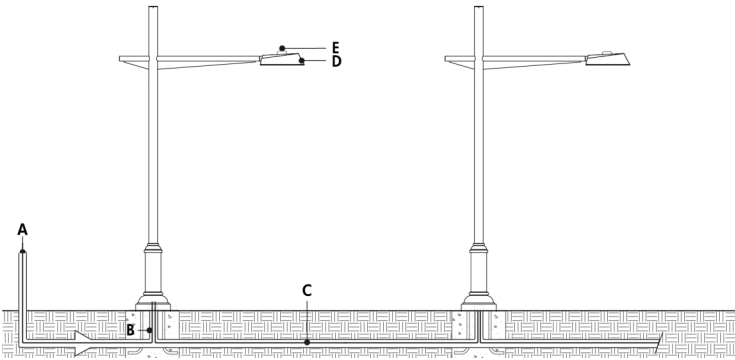
0-10V Dimming (DIM) - Wiring Detail



- A - To fixture
- B - 0-10V +
- C - 0-10V -
- D - Line
- E - Line/Neutral
- F - Ground
- G - Wire-nuts (by others)
- H - Conduit (by others)
- I - To next fixture
- J - Power input and from third party dimmer or from previous fixture

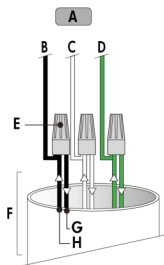
- Consult factory for specific applications and maximum fixture count/cable length recommendations.
- 0-10V mA ratings: passive dimmer (Current Sink): 3mA per fixture, active dimmer (Current Source): 0.5mA per fixture.
- 1% minimum dimming value.

5 Pins & 7Pins Receptacle Control (SPR5, SPR7)



- A - Power input (120-480V, wiring by others)
- B - Conduit (by others)
- C - Power wiring (by others)
- D - Lumenicon Area Medium
- E - Photoelectric control

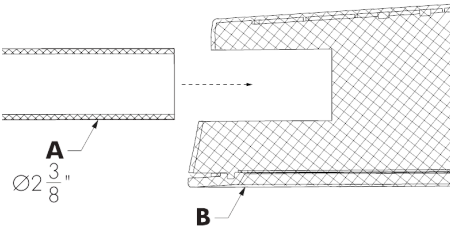
5 pins & 7pins Receptacle Control (SPR5, SPR7) - Wiring Detail



- A - To fixture
- B - Line
- C - Line/Neutral
- D - Ground
- E - Wire-nuts (by others)
- F - Conduit (by others)
- G - To next fixture
- H - Power input or from previous fixture

Mounting Options

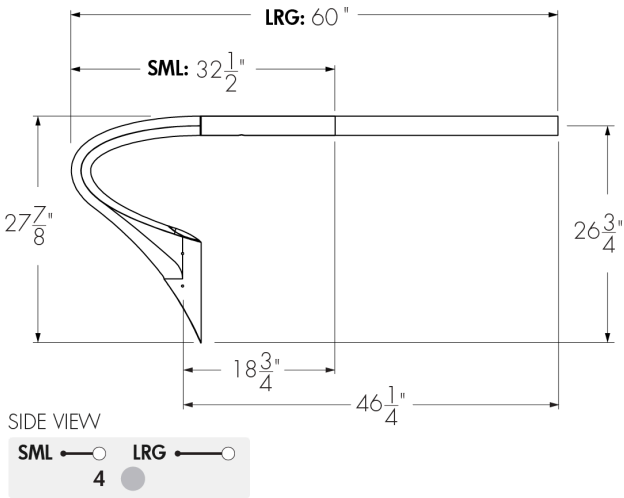
SO2 - Side Overlap (2 3/8 in Tenon)



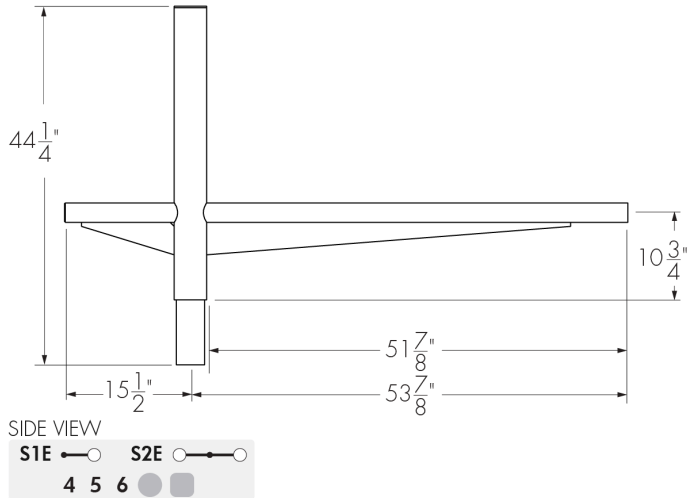
- A - Decorative Arm
- B - Luminaire

SO2 - Side Overlap (2 3/8 in Tenon) Arm Style Dimensions

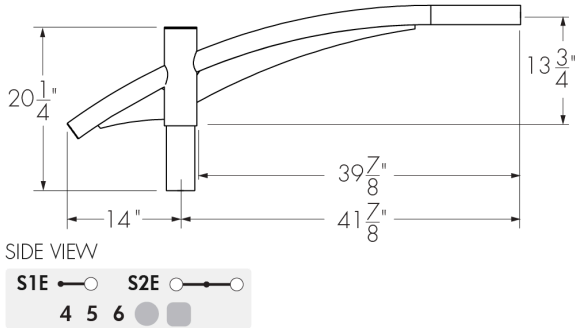
PU2 Arm Style



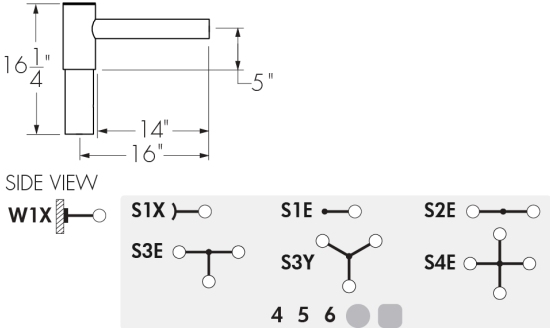
PU4 Arm Style



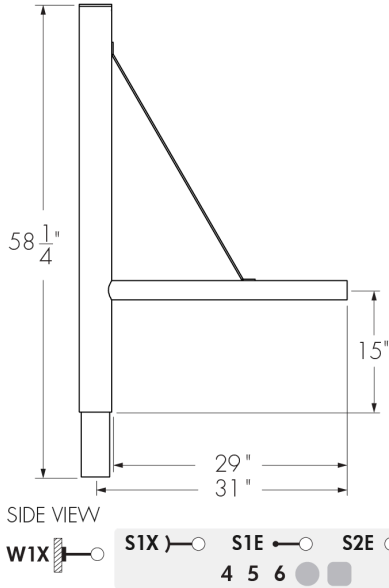
PU5 Arm Style



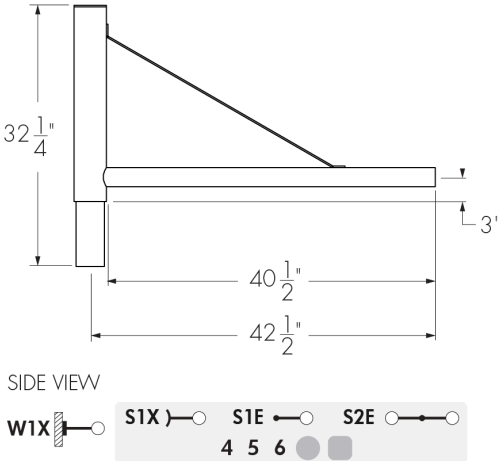
PU8 Arm Style



CS12 Arm Style



CS13 Arm Style



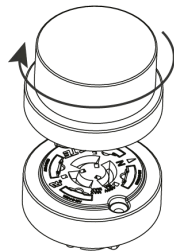
- Mid-pole/mid-luminaire distance is based on 4 in pole (add 1/2 in for 5 in pole and 1 in for 6 in pole).

Options

SPR5 and SPR7 - 5-Pin and 7-Pin Receptacles



SPR5 SC and SPR7 SC - 5-Pin and 7-Pin Receptacles with Shorting Cap



- Dimming receptacle meets ANSI C136.41 Standard.



How to Order

| Housing <sup>(1)</sup>              | Voltage          | Lens  | Output<br>(Nominal<br>Lumens)            | Color and Color<br>Temperature <sup>(7)</sup> | Color<br>Rendering                | Distributions                           | Finish  | Dual-Color<br>Option | Dual-Color<br>Finish Option <sup>(14)</sup>  | Control                                 | Option  |
|-------------------------------------|------------------|---|--|---|-----------------------------------|---|---|----------------------|--|---|---|
| LIAM<br>Lumenicon<br>Area<br>Medium | 120<br>120 Volts | CSL<br>Clearsite<br>Lens <sup>(2) (3)</sup> | \$40<br>4000lm <sup>(4)</sup>            | 22K<br>2200K <sup>(8)</sup>                   | CRI 70<br>CRI 70+ <sup>(9)</sup>  | 2<br>Type II                            | BK<br>Black<br>Sandtex®                                     | c<br>Dual-Color      | BK<br>Silver<br>Sandtex®<br>fixture with<br>Black<br>Sandtex®<br>top cover<br>and ring <sup>(15)</sup> | DIM<br>0-10V<br>Dimming <sup>(18)</sup> | CRC<br>Corrosion-<br>Resistant<br>Coating <sup>(19)</sup><br><br>SP<br>Surge<br>Protector<br><br>SPR5<br>5-Pin<br>Receptacle<br><sup>(21)</sup><br><br>SPR5 SC<br>5-Pin<br>Receptacle<br>with Shorting<br>Cap <sup>(21)</sup><br><br>SPR7<br>7-Pin<br>Receptacle<br><sup>(21)</sup><br><br>SPR7 SC<br>7-Pin<br>Receptacle<br>with Shorting<br>Cap <sup>(21)</sup> |
|                                     | 208<br>208 Volts | SSL<br>Softsite lens<br><sup>(4) (5)</sup>  | \$60<br>6000lm                           | 27K<br>2700K <sup>(8)</sup>                   | CRI 80<br>CRI 80+ <sup>(10)</sup> | 2BLS<br>Type II<br>Backlight<br>Shield  | BRZ<br>Bronze<br>Sandtex®                                   |                      |  |   |   |
|                                     | 240<br>240 Volts |   | M80<br>8000lm                            | 30K<br>3000K                                  |                                   | 3<br>Type III                           | SI<br>Silver<br>Sandtex®                                    |                      |  |   |   |
|                                     | 277<br>277 Volts |   | M110<br>11 000lm                         | 35K<br>3500K                                  |                                   | 3BLS<br>Type III<br>Backlight<br>Shield | BKTX<br>Textured<br>Black                                   |                      |  |   |   |
|                                     | 347<br>347 Volts |   | M150<br>15 000lm                         | 40K<br>4000K                                  |                                   | 4<br>Type IV                            | BRZTX<br>Textured<br>Bronze Non-<br>Metallic                |                      |  |   |   |
|                                     | 480<br>480 Volts |   | L170<br>17 000lm                         | 57K<br>5700K                                  |                                   | 4BLS<br>Type IV<br>Backlight<br>Shield  | GRATX<br>Textured<br>Medium<br>Gray                         |                      |  |   |   |
|                                     |                  |   | L200<br>20 000lm                         |   |                                   | 5S<br>Type V<br>Square                  | GRNTX<br>Textured<br>Green                                  |                      |  |   |   |
|                                     |                  |   | L30<br>3000lm<br>Softsite <sup>(5)</sup> |   |                                   | 5<br>Type V<br>Softsite <sup>(4)</sup>  | WHTX<br>Textured<br>White                                   |                      |  |   |   |
|                                     |                  |   | L50<br>5000lm<br>Softsite <sup>(5)</sup> |   |                                   |   | CC<br>Custom<br>Color & Finish<br><sup>(11) (12) (13)</sup> |                      |  |   |   |
|                                     |                  |   | L70<br>7000lm<br>Softsite <sup>(5)</sup> |   |                                   |   |   |                      |  |   |   |

Notes:

1. Consult Related Products section on webpage for a selection of compatible decorative arms, decorative poles (sold separately).

2. Available with \$40, \$60, M80, M110, M150, L170 and L200 output options only.

3. Available with types 2, 2BLS, 3, 3BLS, 4, 4BLS and 5S distribution only.

4. Available with L30, L50 and L70 output options only.

5. Available with type 5 distribution only.

6. Available up to 277V.

7. Consult factory for more color temperature options.

8. Available for CRI 80 only.

9. Binning within a 3-step MacAdam ellipse, with the exception of 2200K and 5700K.

10. Binning within a 2-step MacAdam ellipse, with the exception of 5700K.
11. Specify RAL number followed by "TX" for textured finish (ex: RAL9007TX) or STX for Sandtex finish (ex: RAL9007STX). Textured or Sandtex finishes are recommended for the durability of all products. If a finish is not specified with the RAL number (ex: RAL9007), a glossy finish will be provided. Please consult factory for other RAL textures and glosses, or to match alternate color charts. Final color matching results may vary.

12. Setup charges apply for RAL colors. Consult factory for details.

13. Longer lead times can be expected for custom RAL color finishes.

14. Required only if Dual-Color Option is specified.

15. Available with SI finish option only.

16. Available with BK finish option only.

17. Available with CC finish option only.

18. DIM control can be used as NO (On/Off control) if no data is required.

19. Use only when exposed to salt spray. This option is not required for normal outdoor exposure.

20. Setup charges apply. Consult factory for details.

21. Only one receptacle can be specified per fixture.

How to Order

|                                      |
|--------------------------------------|
|                                      |
| Mounting Options                     |
| SO2<br>Side Overlap (2 3/8 in Tenon) |