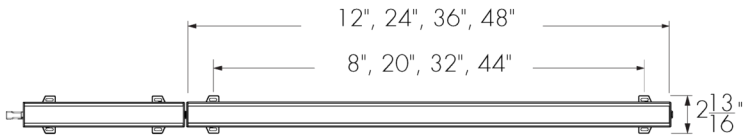
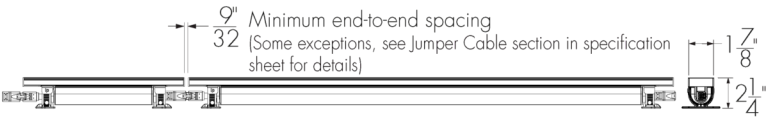


Project Name \_\_\_\_\_ Qty \_\_\_\_\_

Type \_\_\_\_\_ Catalog / Part Number \_\_\_\_\_



Top View  
ST Mounting Option Shown



Front and Side Views

Photometric Summary (13 W/ft)

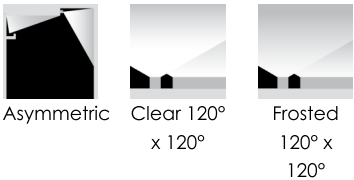
	Delivered Output (lm)
AB	5,105
CL	6,275
FR	5,291

1. Based on 4000K, 48 in.  
2. Photometric performance is measured in compliance with IESNA LM-79-24.  
3. Refer to the Lumencore Linear Cove White and Static Colors Photometric Guide on Lumenpulse website for information on other color temperatures.

Description

The Lumencore Linear Cove fixture is expertly crafted to provide reliable and uniform illumination for cove lighting applications. With a high CRI that ensures accurate color rendering, this luminaire enhances the ambiance of any space while seamlessly integrating into architectural designs. Its sleek profile and versatile mounting options make it ideal for creating indirect lighting effects in various settings, from retail environments to office spaces. Designed for efficiency and longevity, the Lumencore Linear Cove delivers consistent performance and energy savings, making it a perfect choice for those seeking both functionality and style in their lighting solutions.

Optic



Color and Color Temperature



Features

Length (Nominal)	12: 12 in, 24: 24 in, 36: 36 in, 48: 48 in
Color and Color Temperature	22K: 2200K 27K: 2700K 30K: 3000K 35K: 3500K 40K: 4000K RD: Red GR: Green BL: Blue AMB: Phosphor Converted Amber (PC Amber)
Optic	AB: Asymmetric CL: Clear 120° x 120° FR: Frosted 120° x 120°
Compact Mounting Options	ST: Standard Mounting SM: Slim Adjustable Mounting Continuously Adjustable

Control

ON/OFF    0-10V    DALI 2  
T6    DMX/RDM

Certifications



Wall Mounting Options	<b>WMC3:</b> Wall Mounting Continuously Adjustable 3 in to Optical Center <b>WMC6:</b> Wall Mounting Continuously Adjustable 6 in to Optical Center <b>WMC18:</b> Wall Mounting Continuously Adjustable 18 in to Optical Center	<b>WMC4:</b> Wall Mounting Continuously Adjustable 4 in to Optical Center <b>WMC12:</b> Wall Mounting Continuously Adjustable 12 in to Optical Center <b>WMC24:</b> Wall Mounting Continuously Adjustable 24 in to Optical Center
Finish	<b>MWH:</b> Matte White <b>MBK:</b> Matte Black <b>CC:</b> Custom Color and Finish (Please Specify RAL Color) <b>SP:</b> Special Color (Choose From Standard Point Source Color Palette)	
Cable Color	<b>WH:</b> White <b>BK:</b> Black	
Optical Accessories	<b>BS:</b> Beam Softener <b>VS:</b> Visor <b>LV:</b> Louver <b>HL:</b> Honeycomb Louver <b>SN:</b> Snoot <b>SH:</b> Shield	
Warranty	5-year limited warranty	

Performance

Maximum Delivered Output	Up to 1707 lm (4 W/ft, 4 ft fixture, 4000K, CRI 90+, Clear 120° x 120°) Up to 3288 lm (7 W/ft, 4 ft fixture, 4000K, CRI 90+, Clear 120° x 120°) Up to 4782 lm (10 W/ft, 4 ft fixture, 4000K, CRI 90+, Clear 120° x 120°) Up to 6275 lm (13 W/ft, 4 ft fixture, 4000K, CRI 90+, Clear 120° x 120°)
Color Rendering	CRI 90+ (White Light Only)
Color Consistency	1 SDCM
Lumen Maintenance	L70>90,000 hrs Ta 77 °F (TM-21 reported) L70>100,000 hrs Ta 77 °F (projected)* L95=20,200 hrs Ta 77 °F (TM-21 reported) *Estimated based on in-situ case temperature and LM-80 report

Physical

Housing Material	Aluminum
Diffuser Material	Polymethyl methacrylate (PMMA)
AB Asymmetric Optic Material	Polymethyl methacrylate (PMMA) with PC Cover
End Cap Material	Die cast aluminum

Weight	1.46 lbs (12 in fixture) 2.67 lbs (24 in fixture) 3.6 lbs (36 in fixture) 5.47 lbs (48 in fixture) Fixture weights only. Refer to Mounting Options and Accessories section in specification sheet for total fixture weights with mounting brackets and optical accessories
--------	--

Electrical and Control

Voltage	120 Volts to 277 Volts
Wattage	<b>4W:</b> 4 W/ft, <b>7W:</b> 7 W/ft, <b>10W:</b> 10 W/ft, <b>13W:</b> 13 W/ft
Control	<b>NO:</b> On/Off Control <b>PDA1:</b> Professional 0-10V Dimming 0.1% Linear Curve <b>PDA2:</b> Professional 0-10V Dimming 0.1% Logarithmic Curve <b>DALI:</b> DALI 2 T6 Enabled Dimming 0.1% <b>DMX/RDM:</b> DMX/RDM Enabled Dimming 0.1%
Flicker	Designed to comply with recommended practices of IEEE 1789:2015
Inrush Current (Peak)	Meets NEMA-410 requirements

Accessories - Optional (Order Separately)

Cables	<b>LCVALC:</b> Lumencore Linear Leader Cable <b>LCVAJC:</b> Lumencore Linear Jumper Cable
Control Boxes	<b>CBX-DMX/RDM:</b> DMX/RDM enabled (Daisy Chain or Star Configuration) <b>CBX-ENET:</b> Ethernet enabled (Daisy Chain or Star Configuration) <b>LDBI:</b> Lumentalk Data Bridge Indoor <b>WC:</b> Wiring Compartment (LCV/A Configuration)
Installation Accessories	<b>LCVAT:</b> Lumencore Linear Alignment Track <b>LCVARC:</b> Lumencore Linear Alignment Track Cover

Environmental

Storage Temperature	-40 °F to 122 °F
Start-up Temperature	-4 °F to 122 °F
Operating Temperature	-40 °F to 122 °F
Environment	Damp location rating (interior applications only)
Ingress Protection Rating	IP20

Important

Virtual Patent Marking Notice

This website (<https://www.lmpg.com/patents-trademarks>) is provided to satisfy the virtual patent marking provisions of applicable jurisdictions. Some products listed may be covered by additional patents not referenced here.

Photometric Information

4 W/ft (3000K)		7 W/ft (3000K)		10 W/ft (3000K)		13 W/ft (3000K)	
	Delivered Output (lm)		Delivered Output (lm)		Delivered Output (lm)		Delivered Output (lm)
AB	1,276	AB	2,458	AB	3,575	AB	4,691
CL	1,569	CL	3,022	CL	4,394	CL	5,767
FR	1,323	FR	2,548	FR	3,705	FR	4,862

Based on 4 ft fixture length, CRI 90, full output.

Consult website for IES files. Delivered output: +/- 10% tolerance.

Photometric performance is measured in compliance with IESNA LM-79-24.

Refer to Photometric Guide on Lumenpulse website for information on other color temperatures.

4 W/ft (4000K)		7 W/ft (4000K)		10 W/ft (4000K)		13 W/ft (4000K)	
	Delivered Output (lm)		Delivered Output (lm)		Delivered Output (lm)		Delivered Output (lm)
AB	1,389	AB	2,675	AB	3,890	AB	5,105
CL	1,707	CL	3,288	CL	4,782	CL	6,275
FR	1,439	FR	2,772	FR	4,032	FR	5,291

Based on 4 ft fixture length, CRI 90, full output.

Consult website for IES files. Delivered output: +/- 10% tolerance.

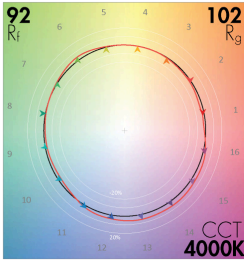
Photometric performance is measured in compliance with IESNA LM-79-24.

Refer to Photometric Guide on Lumenpulse website for information on other color temperatures.

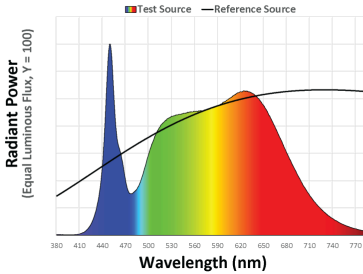
Chromaticity Data

TM-30 - 4000K

CCT	CIE		TM-30	
4000K	R <sub>a</sub>	94	92	R <sub>f</sub>
	R <sub>9</sub>	84	102	R <sub>g</sub>



Spectral Power Distribution



Refer to Spectral Information download on Lumenpulse website for more information.

Spectral Information

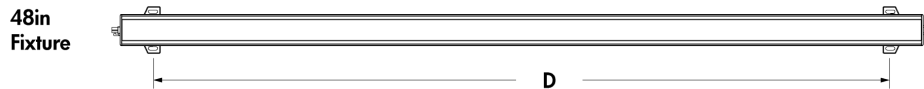
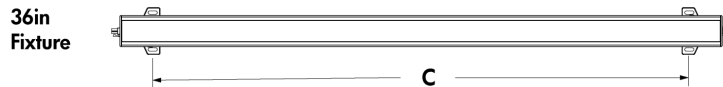
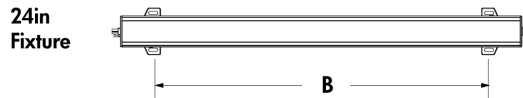
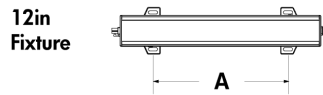
	CRI	R9	M/P Ratio	MDER	M/P: Melanopic/Photopic Ratio	MDER: Melanopic Daylight Equivalence Ratio
2200K	94	65	0.348	0.315		
2700K	93	73	0.463	0.42		
3000K	94	82	0.536	0.485		
3500K	93	76	0.612	0.555		
4000K	94	84	0.714	0.647		

SP - Special Colours (Palette for Fixture and Shield Finish)

							
MBR - Matte brown	MOR - Matte orange	MGR - Matte green	MBL - Matte blue	MSI - Matte silver	GWH - Glossy white	GBK - Glossy black	GYL - Glossy yellow
							
GLR - Glossy red	GVI - Glossy violet	GGR - Glossy green	GIY - Glossy ivory	MLG - Metalized grey	IBR - Italian brick red		

Mounting Bracket Placement

ST - Standard Mounting



Top view

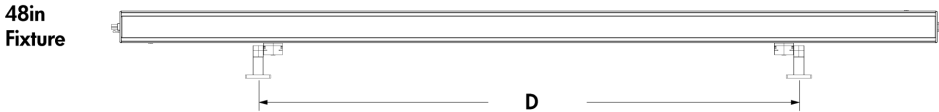
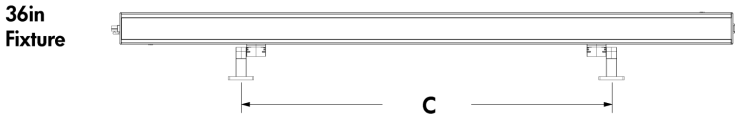
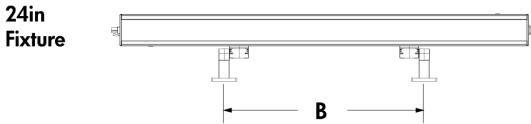
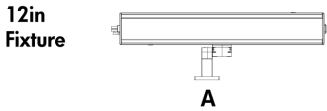
Fixed Dimensions Between Brackets

- A - 8 in
- B - 20 in
- C - 32 in
- D - 44 in

Mounting Bracket Placement (Minimum and Maximum Distances)

SM - Slim Adjustable Mounting

WMC - Wall Mounting Continuously Adjustable

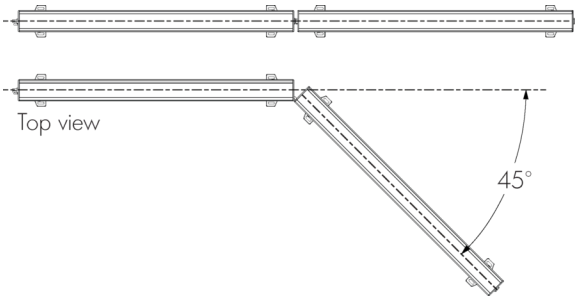


Top view

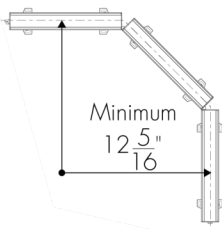
- A - Bracket in the center of the fixture
  - B - Minimum 10 in to maximum 16 in
  - C - Minimum 15 in to maximum 28 in
  - D - Minimum 20 in to maximum 40 in
- WMC3 mounting brackets shown.

Adjustment

Maximum Angle Adjustment



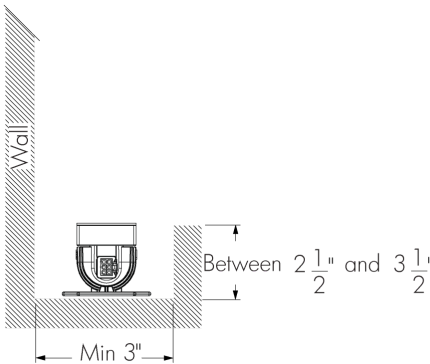
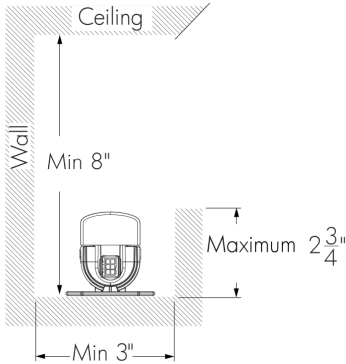
Minimum Radius



Suggested Cove Dimensions

Asymmetric Optic

120°x120° (Clear or Frosted)

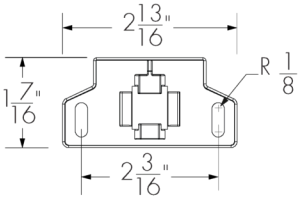
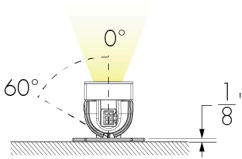


Fixture is shown with a 0° tilt adjustment. For best results, adjust fixture to 20° angle.

Mounting Options

ST - Standard Mounting

ST - Mounting Hole Pattern



Two mounting brackets provided for all fixture lengths.

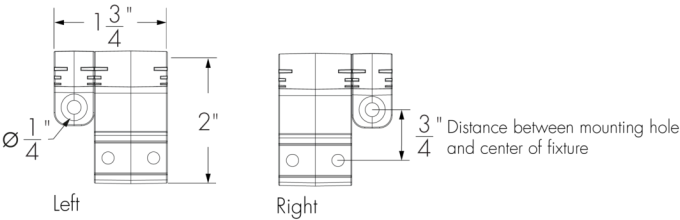
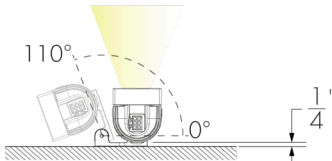
Weight of one ST Mounting Bracket: 0.02 lbs.

Weight of two ST Mounting Brackets: 0.04 lbs.

The weight of the mounting bracket is in addition to the weight of the fixture.

SM - Slim Adjustable Mounting

SM - Mounting Hole Pattern



The angle range will be impacted if optical accessories are added.

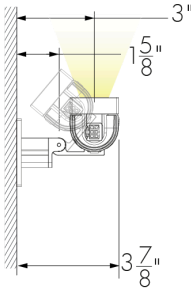
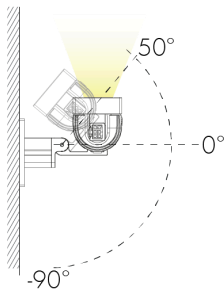
One mounting bracket provided for 12 in fixtures. Two mounting brackets provided for 24 in, 36 in and 48 in fixtures.

Weight of one SM Mounting Bracket: 0.09 lbs.

Weight of two SM Mounting Brackets: 0.19 lbs.

The weight of the mounting bracket is in addition to the weight of the fixture.

WMC3 - Wall Mounting Continuous Adjustable 3 in to Optical Center



The angle range will be impacted if optical accessories are added.

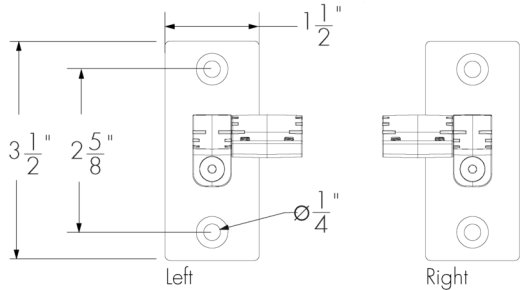
One mounting bracket provided for 12 in fixtures. Two mounting brackets provided for 24 in, 36 in and 48 in fixtures.

Weight of one WMC3 Mounting Bracket: 0.24 lbs.

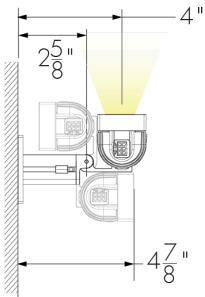
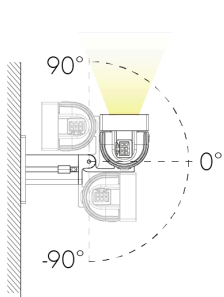
Weight of two WMC3 Mounting Brackets: 0.49 lbs.

The weight of the mounting bracket is in addition to the weight of the fixture.

WMC3 - Mounting Hole Pattern



WMC4 - Wall mounting Continuous adjustable 4 in to Optical Center



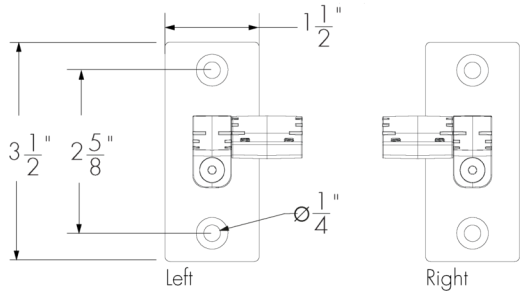
One mounting bracket provided for 12 in fixtures. Two mounting brackets provided for 24 in, 36 in and 48 in fixtures.

Weight of one WMC4 Mounting Bracket: 0.3 lbs.

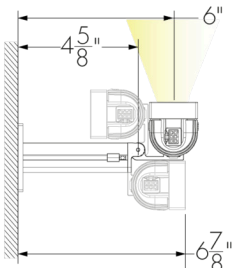
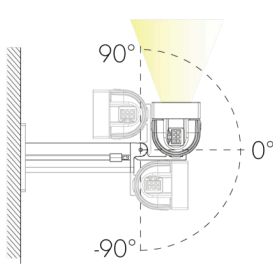
Weight of two WMC4 Mounting Brackets: 0.6 lbs.

The weight of the mounting bracket is in addition to the weight of the fixture.

WMC4 - Mounting Hole Pattern



WMC6 - Wall Mounting Continuous Adjustable 6 in to Optical Center



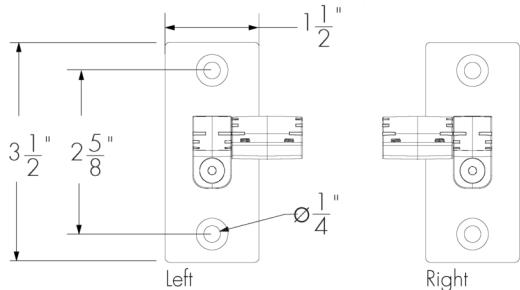
One mounting bracket provided for 12 in fixtures. Two mounting brackets provided for 24 in, 36 in and 48 in fixtures.

Weight of one WMC6 Mounting Bracket: 0.4 lbs.

Weight of two WMC6 Mounting Brackets: 0.79 lbs.

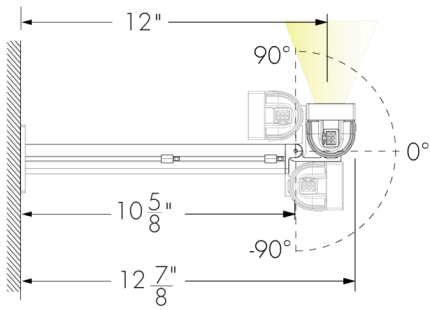
The weight of the mounting bracket is in addition to the weight of the fixture.

WMC6 - Mounting Hole Pattern





WMC12 - Wall Mounting Continuous Adjustable 12 in to Optical Center



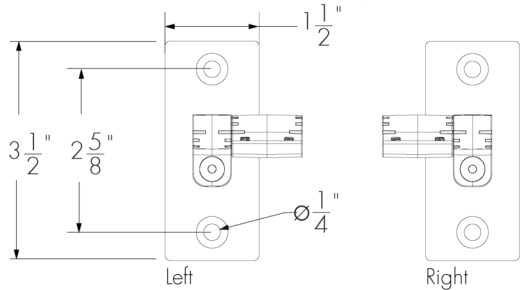
One mounting bracket provided for 12 in fixtures. Two mounting brackets provided for 24 in, 36 in and 48 in fixtures.

Weight of one WMC12 Mounting Bracket: 0.72 lbs.

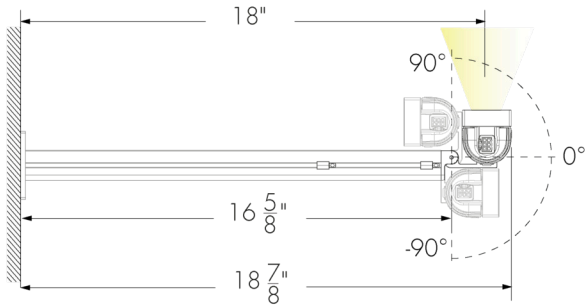
Weight of two WMC12 Mounting Brackets: 1.43 lbs.

The weight of the mounting bracket is in addition to the weight of the fixture.

WMC12 - Mounting Hole Pattern



WMC18 - Wall Mounting Continuous Adjustable 18 in to Optical Center



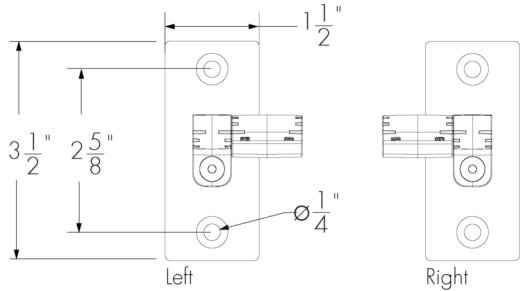
One mounting bracket provided for 12 in fixtures. Two mounting brackets provided for 24 in, 36 in and 48 in fixtures.

Weight of one WMC18 Mounting Bracket: 1.03 lbs.

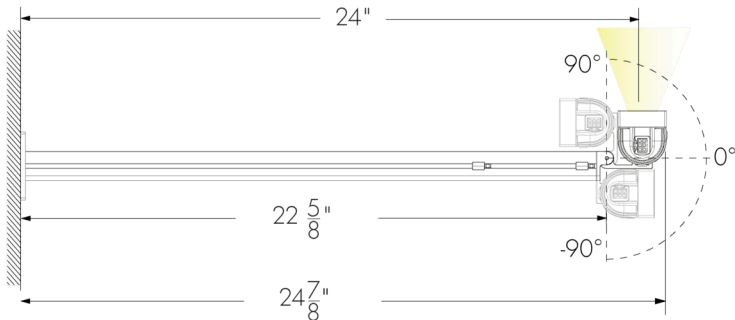
Weight of two WMC18 Mounting Brackets: 2.05 lbs.

The weight of the mounting bracket is in addition to the weight of the fixture.

WMC18 - Mounting Hole Pattern



WMC24 - Wall Mounting Continuous Adjustable 24 in to Optical Center



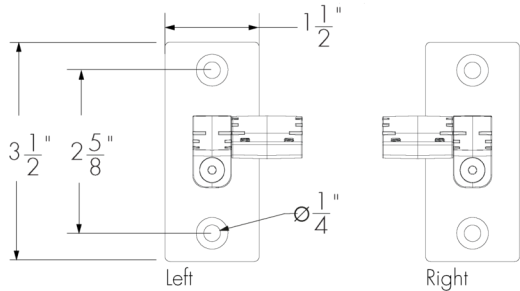
One mounting bracket provided for 12 in fixtures. Two mounting brackets provided for 24 in, 36 in and 48 in fixtures.

Weight of one WMC24 Mounting Bracket: 1.34 lbs.

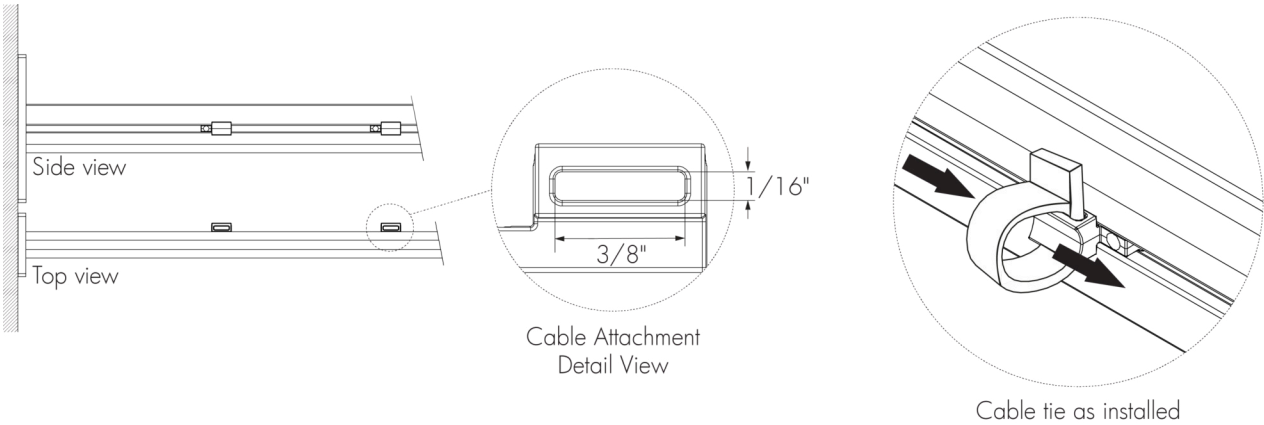
Weight of two WMC24 Mounting Brackets: 2.69 lbs.

The weight of the mounting bracket is in addition to the weight of the fixture.

WMC24 - Mounting Hole Pattern



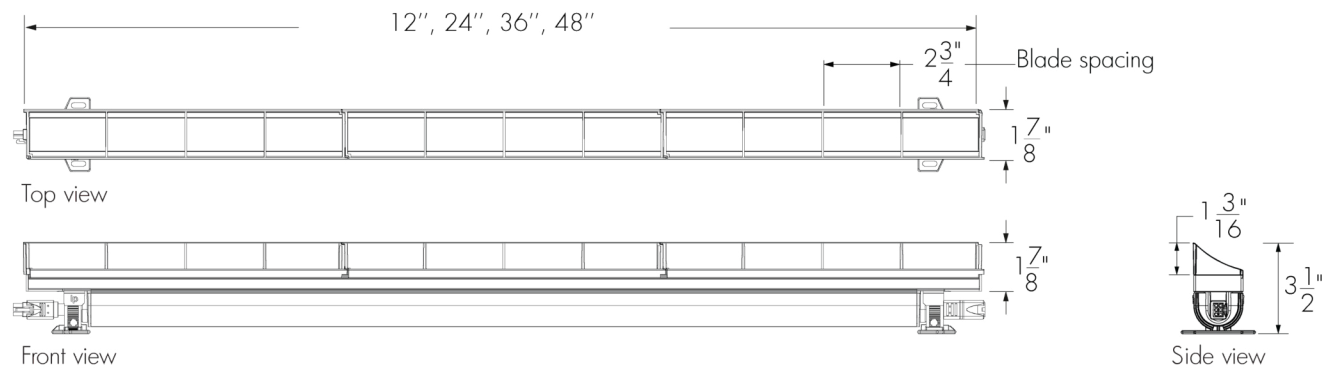
Cable Management System for Wall Mounting Brackets



No cable attachment provided for WMC3.  
One cable attachment provided for WMC4 & WMC6.  
Two cable attachments provided for WMC12 & WMC18.  
Three cable attachments provided for WMC24.  
Maximum cable tie size: 0.35 in width, 0.08 in in thickness.  
Cable ties are recommended, provided by others.

Accessories

VS - Visor



Accessories come in 12 in sections. 12 in Fixture requires 1 accessory, 24 in fixture requires 2 accessories, 36 in fixture requires 3 accessories, 48 in fixture requires 4 accessories.

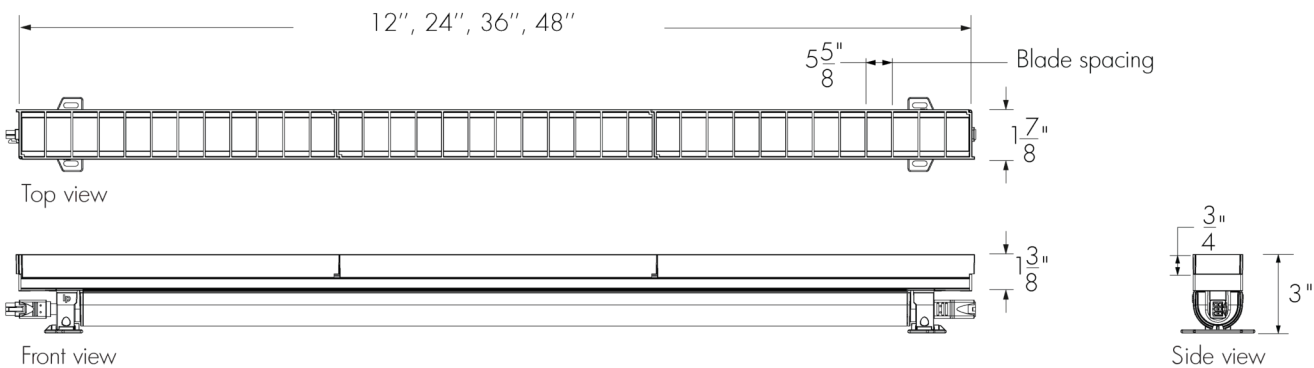
Weight of 1 accessory: 0.1 lbs, weight of 2 accessories: 0.2 lbs, weight of 3 accessories: 0.3 lbs, weight of 4 accessories: 0.4 lbs.

Note: The weight of the accessory is in addition to the weight of the fixture.

- A Visor will affect beam distribution. Consult factory for application support.
- The Visor is field installable. The Visor can be combined with the Shield accessory; all other combinations are not possible.
- The exterior finish of the accessory will match the finish specified in the fixture order code. Interior surface is matte black.

Not available for AB Asymmetric Optic.

LV - Louver



Accessories come in 12 in sections. 12 in Fixture requires 1 accessory, 24 in fixture requires 2 accessories, 36 in fixture requires 3 accessories, 48 in fixture requires 4 accessories.

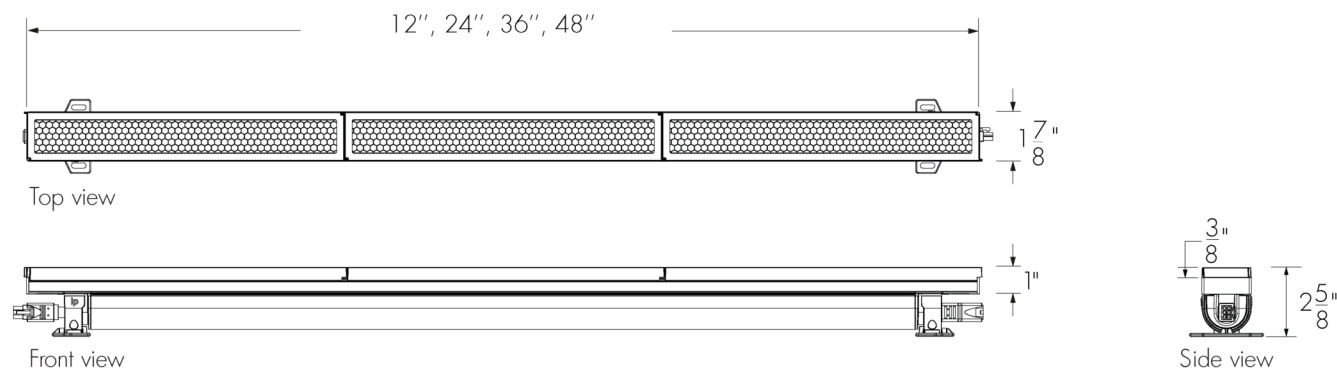
Weight of 1 accessory: 0.13 lbs, weight of 2 accessories: 0.26 lbs, weight of 3 accessories: 0.4 lbs, weight of 4 accessories: 0.53 lbs.

Note: The weight of the accessory is in addition to the weight of the fixture.

- A Louver will affect beam distribution. Consult factory for application support.
- The Louver is field installable. The Louver can be combined with the Shield accessory; all other combinations are not possible.
- The exterior finish of the accessory will match the finish specified in the fixture order code. Interior surface is matte black.

Not available for AB Asymmetric Optic.

HL - Honeycomb Louver



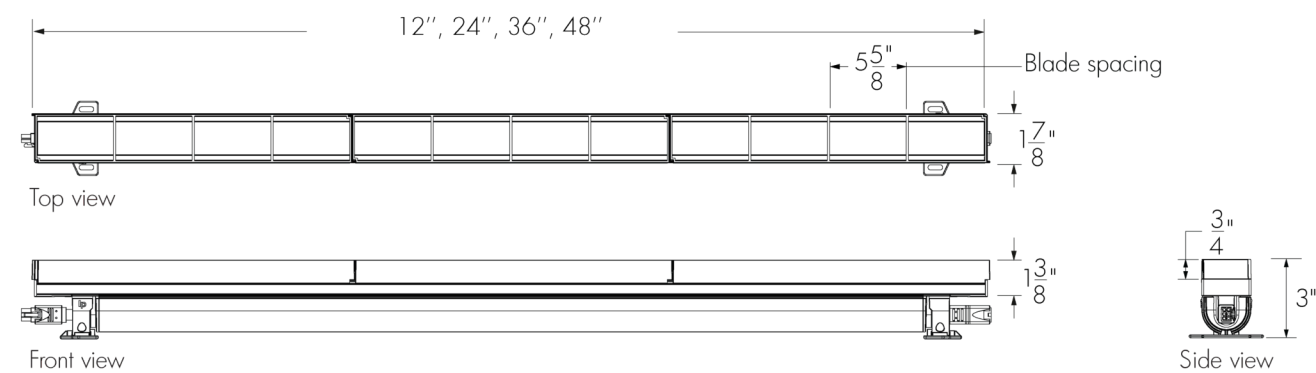
Accessories come in 12 in sections. 12 in Fixture requires 1 accessory, 24 in fixture requires 2 accessories, 36 in fixture requires 3 accessories, 48 in fixture requires 4 accessories.

Weight of 1 accessory: 0.09 lbs, weight of 2 accessories: 0.18 lbs, weight of 3 accessories: 0.26 lbs, weight of 4 accessories: 0.35 lbs.  
Note: The weight of the accessory is in addition to the weight of the fixture.

- A Honeycomb Louver will affect beam distribution. Consult factory for application support.
- The Honeycomb Louver is field installable. The Honeycomb Louver can be combined with the Shield accessory; all other combinations are not possible.
- The exterior finish of the accessory will match the finish specified in the fixture order code. Interior surface is matte black.

Not available for AB Asymmetric Optic.

SN - Snoot



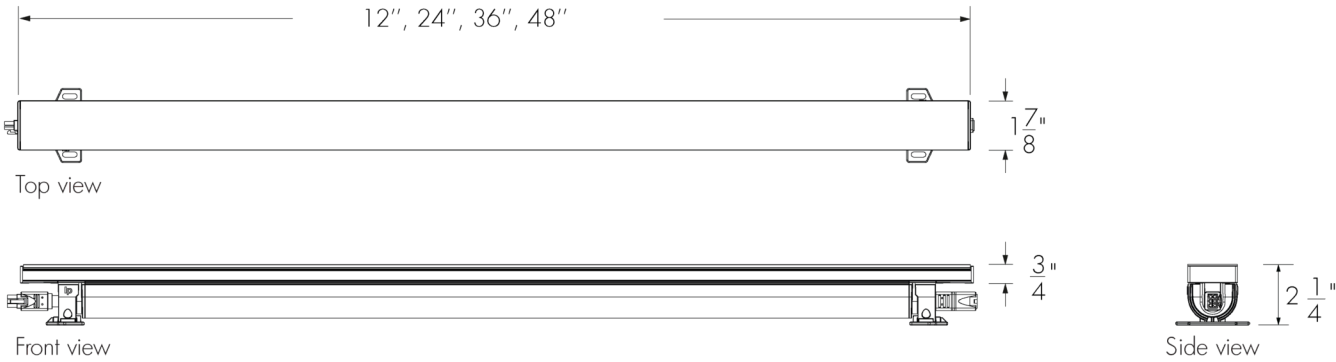
Accessories come in 12 in sections. 12 in Fixture requires 1 accessory, 24 in fixture requires 2 accessories, 36 in fixture requires 3 accessories, 48 in fixture requires 4 accessories.

Weight of 1 accessory: 0.1 lbs, weight of 2 accessories: 0.2 lbs, weight of 3 accessories: 0.3 lbs, weight of 4 accessories: 0.4 lbs.  
Note: The weight of the accessory is in addition to the weight of the fixture.

- A Snoot will affect beam distribution. Consult factory for application support.
- The Snoot is field installable. The Snoot can be combined with the Shield accessory; all other combinations are not possible.
- The exterior finish of the accessory will match the finish specified in the fixture order code. Interior surface is matte black.

Not available for AB Asymmetric Optic.

BS - Beam Softener

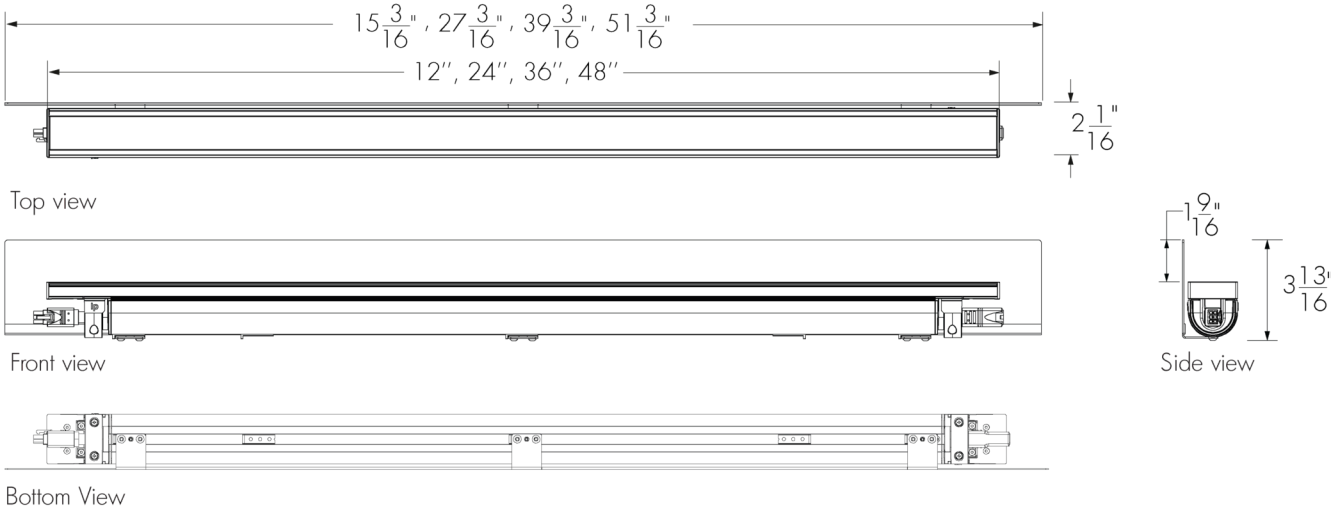


Weight of 12 in accessory: 0.07 lbs, weight of 24 in accessory: 0.13 lbs, weight of 36 in accessory: 0.2 lbs, weight of 48 in accessory: 0.26 lbs.  
Note: The weight of the accessory is in addition to the weight of the fixture.

- A Beam Softener will affect beam distribution. Consult factory for application support.
- The Beam Softener is field installable. The Beam Softener can be combined with the Shield accessory; all other combinations are not possible.
- The exterior finish of the accessory will match the finish specified in the fixture order code. Interior surface is matte black.

Not available for AB Asymmetric Optic.

SH - Shield



Weight of 12 in accessory: 0.31 lbs, weight of 24 in accessory: 0.55 lbs, weight of 36 in accessory: 0.79 lbs, weight of 48 in accessory: 1.05 lbs.  
Note: The weight of the accessory is in addition to the weight of the fixture.

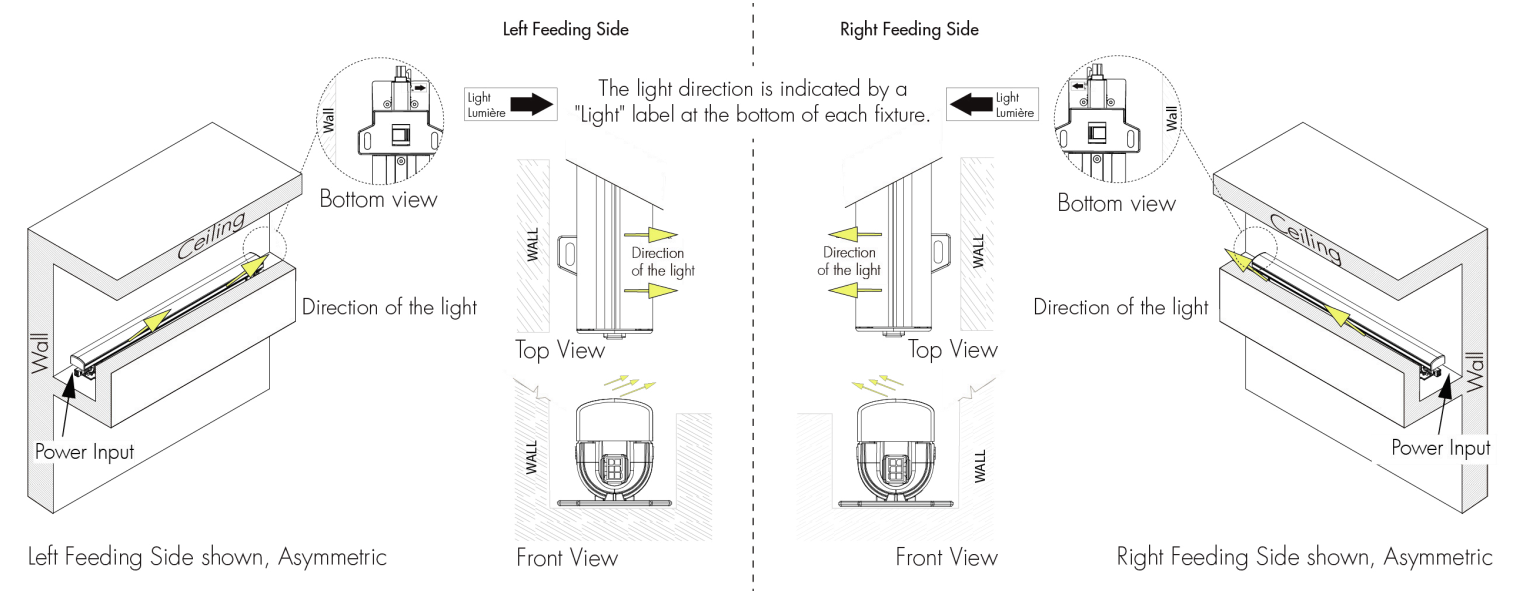
- The Shield can only be used with WMC or SM mounting options.
- A Shield will affect beam distribution. Consult factory for application support.
- The Shield is field installable. The Shield can be combined with one other accessory.
- The exterior finish of the accessory will match the finish specified in the fixture order code (interior surface painted matte black).

Not available for AB Asymmetric Optic.

Weight Table

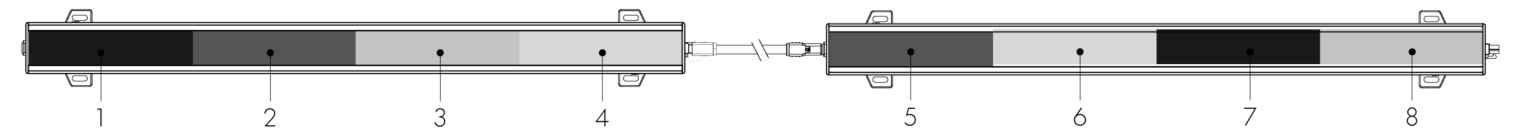
Weight (lbs)							
	Fixture Only	Fixture With Beam Softener	Fixture With Visor	Fixture With Louver	Fixture With Honeycomb Louver	Fixture With Snoot	Fixture With Shield
1ft	1.39	1.46	1.49	1.52	1.48	1.49	1.7
2ft	2.78	2.91	2.98	3.04	2.95	2.98	3.4
3ft	4.17	4.37	4.46	4.56	4.43	4.46	5.09
4ft	5.56	5.82	5.95	6.08	5.91	5.95	6.79

Asymmetric Optic Details

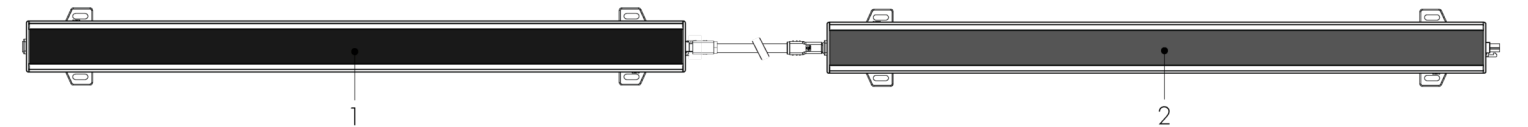


Resolution Details

DMX/RDM Control, Resolution Per Segment: Each 12 in Segment is Addressed Independently



DMX/RDM Control, Resolution Per Fixture: Each Fixture is Addressed Independently



Wiring Color Code

On/Off		DALI, PDA1 or PDA2		DMX/RDM	
UL Color Code	Use	UL Color Code	Use	UL Color Code	Use
Green	Ground	Green	Ground	Green	Ground
Black	Line	Black	Line	Black	Line
White	Neutral	White	Neutral	White	Neutral
		Purple	Data +	Red	Data +
		Pink	Data -	Grey	Data Return
				Orange	Data -

Maximum Fixture Run Length Table

Lumencore Linear 4W/ft		
	120V	277V
Maximum Run of Fixtures	284ft	664ft

Lumencore Linear 7W/ft		
	120V	277V
Maximum Run of Fixtures	172ft	400ft

Lumencore Linear 10W/ft		
	120V	277V
Maximum Run of Fixtures	124ft	284ft

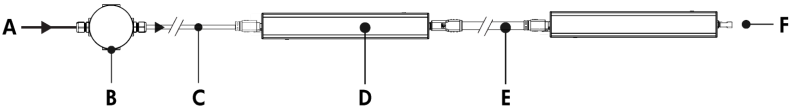
Lumencore Linear 13W/ft		
	120V	277V
Maximum Run of Fixtures	96ft	224ft

Based on 48 in fixtures, power limitations only, and a 10 ft Leader Cable for an end-to-end run, with no Jumper Cables between fixtures. Restrictions may apply based on control type.

The current in the Leader Cable shall not exceed 11A, and the voltage on any fixture shall not be lower than 90V during steady-rate operation. Refer to Typical Wiring Diagrams for Control Protocol specific run length rules.

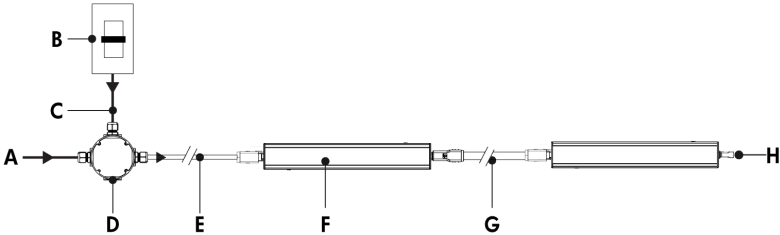
Typical Wiring Diagrams

NO (On/Off Control)



- A - Power input (120 to 277V, wiring by others)
- B - Junction box (by others)
- C - Leader Cable (LCVALC MDR3P)
- D - Lumencore Linear
- E - Jumper Cable (optional, LCVAJC MDR3P)
- F - End Cap

0-10V Dimming 0. 1% Linear (PDA1) or 0.1% Logarithmic (PDA2)

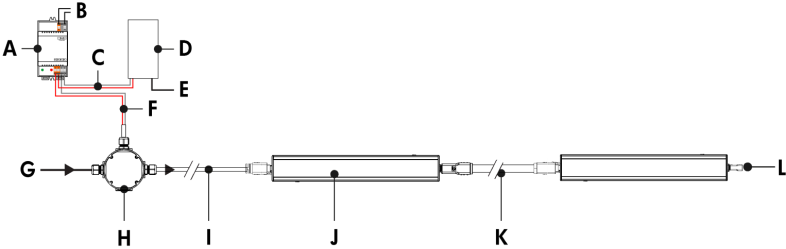


- A - Power input (120 to 277V, wiring by others)
- B - Third-party dimmer
- C - Data wiring (by others)
- D - Junction box (by others)
- E - Leader Cable (LCVALC MDR3P2D)
- F - Lumencore Linear
- G - Jumper Cable (optional, LCVAJC MDR3P2D)
- H - End Cap

0-10V mA ratings: passive dimmer (Current Sink): 1mA per fixture, active dimmer (Current Source): 0.5mA per fixture.

Less than 0.1% minimum dimming value.

DALI T6 Control (DALI)



- A - DALI bus power supply (by others)
- B - Power input for DALI bus power supply (wiring by others)
- C - Data output to DALI controller (wiring by others)
- D - DALI controller (by others)
- E - Power input for DALI controller (if required, wiring by others)
- F - Data output to fixture (wiring by others)
- G - Power input (120-277V, wiring by others)
- H - Junction box (by others)
- I - Leader Cable (LCVALC MDR3P2D)
- J - Lumencore Linear
- K - Jumper Cable (optional, LCVAJC MDR3P2D)
- L - End Cap

64 DALI addressable device limitation (each fixture is an addressable device).

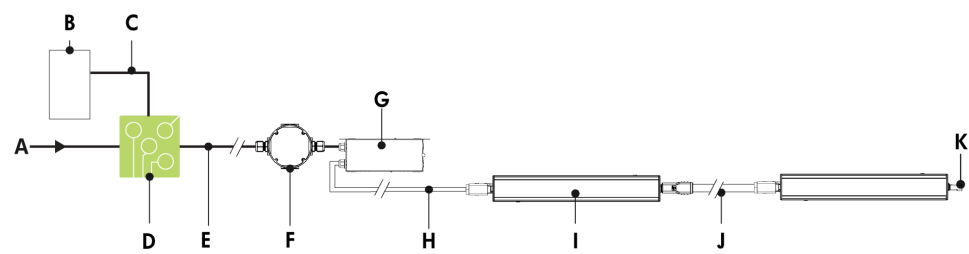
DALI does not allow for control by foot, only by fixture.

Commissioning may be required based on the selection of 3rd party DALI controller. Controller and commissioning provided by others.

Less than 0.1% minimum dimming value.



0-10V, DALI or DMX Dimming With Lumentalk Data Bridge Indoor



- A - Power input (120 to 277V, wiring by others)
- B - Dimmer/controller (order separately from Lumenpulse, or by others)
- C - Data wiring (wiring by others)
- D - Lumentranslator 2 (LTL2-DIM, -DMX)
- E - Power wiring (by others)
- F - Junction box (by others)
- G - Lumentalk Data Bridge Indoor (LDBI-DIM or LDBI-DMX)
- H - Leader Cable (LCVALC MDR3P2D or LCVALC MDR3P3D)
- I - Lumencore Linear
- J - Jumper Cable (optional, LCVAJC MDR3P2D or LCVAJC MDR3P3D)
- K - End Cap

Consult factory for specific applications and maximum fixture count/cable length recommendations.

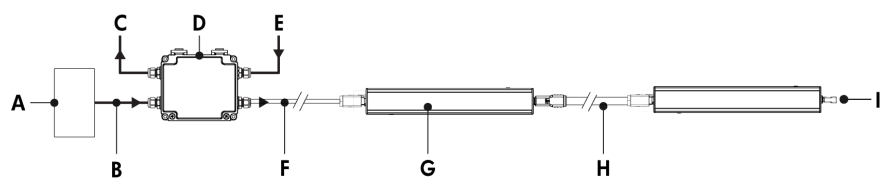
For DMX applications: 1 DMX controller per Lumentalk network, maximum of 48 DMX channels per Lumentalk network (minimum step transition update rate is 1 second, minimum fade time between two colors is 1 minute). Consult factory for applications that require additional capabilities.

Maximum of 1 transmitter (Lumentranslator or Lumenlink) per system.

No third-party fixtures allowed on the same circuit.

Consult factory for DALI Lumentalk applications.

Daisy Chain Layout (DMX/RDM)



- A - Third-party DMX/RDM controller
- B - Data input (Belden 9841 or equivalent, by others)
- C - Data output to next CBX (optional, not isolated/not boosted)
- D - CBX-DS
- E - Power input (120 to 277V, wiring by others)
- F - Leader Cable (LCVALC MDR3P3D)
- G - Lumencore Linear
- H - Jumper Cable (optional, LCVAJC MDR3P3D)
- I - DMX/RDM Terminator

Consult CBX installation instructions for additional wiring details.

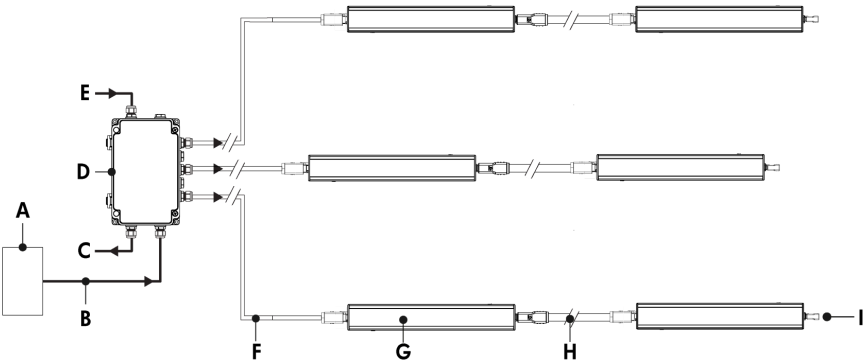
800 ft maximum DMX/RDM "Bus" length.

1 DMX universe = 128 @ 4-channel controllable segments.

Maximum of 4 DMX/RDM repeaters/CBX cascading in line.

Maximum of 6 outputs per CBX-ST; maximum of 1 output per CBX-DS.

Star Layout (DMX/RDM)



- A - Third-party DMX/RDM controller
- B - Data input (Belden 9841 or equivalent, by others)
- C - Data output to next CBX (optional, not isolated/not boosted)
- D - CBX-ST
- E - Power input (120 to 277V, wiring by others)
- F - Leader Cable (LCVALC MDR3P3D)
- G - Lumencore Linear
- H - Jumper Cable (optional, LCVAJC MDR3P3D)
- I - DMX/RDM Terminator

Consult CBX installation instructions for additional wiring details.

800 ft maximum DMX/RDM "Bus" length.

1 DMX universe = 128 @ 4-channel controllable segments.

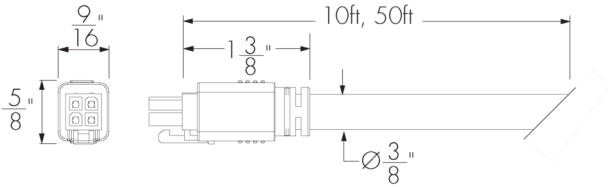
Maximum of 4 DMX/RDM repeaters/CBX cascading in line.

Maximum of 6 outputs per CBX-ST; maximum of 1 output per CBX-DS.

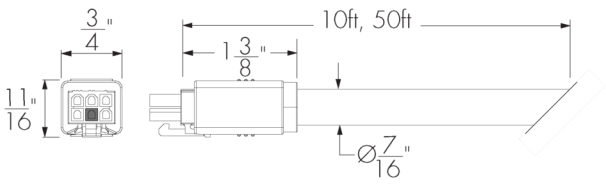
Consult factory for specific applications and maximum fixture count/cable length recommendations.  
Refer to installation instructions for additional wiring details.

Leader Cable (Order Separately)

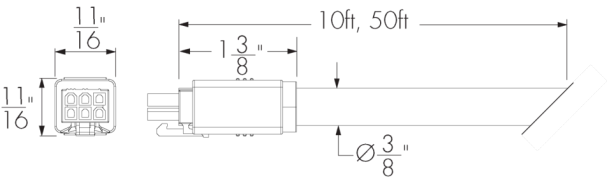
LCVALC - Lumencore Linear Leader Cable (MDR3P)



LCVALC - Lumencore Linear Leader Cable (MDR3P2D)



LCVALC - Lumencore Linear Leader Cable (MDR3P3D)



LCVALC-UL-CERTIFICATION-VOLTAGE-CONTROL-LENGTH-CABLE COLOR

Please specify:

**CERTIFICATION:** UL

**VOLTAGE:** 120\_277

**CONTROL:**

MDR3P: On/Off

MDR3P2D: 0-10V and DALI

MDR3P3D: DMX/RDM

**LENGTH:** 10 ft, 50 ft

**CABLE COLOR:** WH (White), BK (Black)

A DMX/RDM Terminator is mandatory at the end of a fixture run. One (1) included with every MDR3P3D Leader Cable.

Cable Bend Radius:

MDR3P: Minimal bend radius 2 in

MDR3P2D: Minimal bend radius 3 in

MDR3P3D: Minimal bend radius 2 in

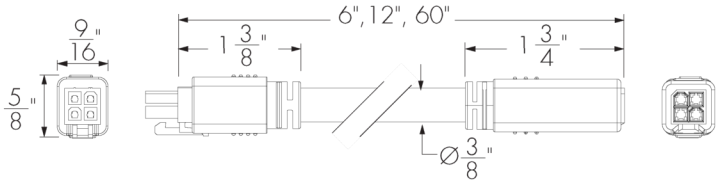
Consult Lumencore Linear Leader Cable specification sheet for additional information.

MDR3P and MDR3P2D: End Cap is provided

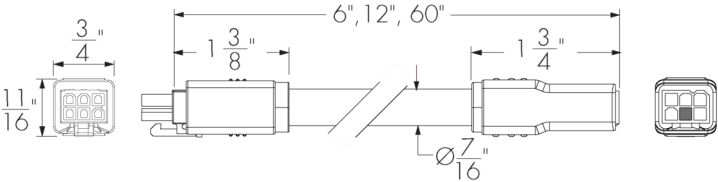
MDR3P3D: DMX/RDM Terminator is provided

Jumper Cable (Order Separately)

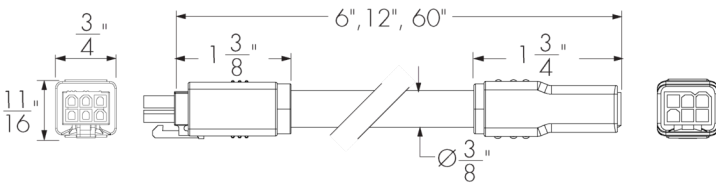
LCVAJC - Lumencore Linear Jumper Cable (MDR3P)



LCVAJC - Lumencore Linear Jumper Cable (MDR3P2D)



LCVAJC - Lumencore Linear Jumper Cable (MDR3P3D)



LCVAJC-UL-CERTIFICATION-VOLTAGE-CONTROL-LENGTH-CABLE COLOR

Specify:  
**CERTIFICATION:** UL  
**VOLTAGE:** 120\_277  
**CONTROL:**  
MDR3P: On/Off  
MDR3P2D: 0-10V and DALI  
MDR3P3D: DMX/RDM  
**LENGTH:** 6 in, 1 ft or 5 ft  
**CABLE COLOR:** WH (White), BK (Black)

Cable Bend Radius:  
MDR3P: Minimal bend radius 2 in  
MDR3P2D: Minimal bend radius 3 in  
MDR3P3D: Minimal bend radius 2 in

Consult Lumencove Linear Jumper Cable specification sheet for additional information. Minimum spacing two fixtures in a row: 0.28 in (nominal).

Control Systems (Order Separately)

PHAROS - Pharos® Designer Lighting Control Kit



The Pharos Designer Lighting Control Kit, available for 1 or 2 DMX universes, allows for complete control of large lighting installations.

Diagnostic And Addressing Tools (Order Separately)

LID - LumenID



LumenID is a diagnostic and addressing DMX/RDM tool. It must be specified on all DMX applications. Consult LID specification sheet for details.

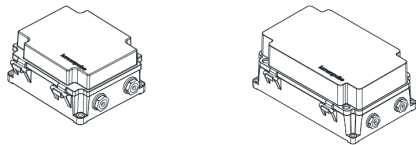
LID-LT - LumentalkID



LumentalkID is a diagnostic and addressing tool. It must be specified for all Lumentalk (LT) applications. Consult LID-LT specification sheet for details.

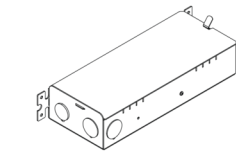
Control Boxes (Order Separately)

CBX-DMX/RDM - DMX/RDM Enabled (Daisy Chain or Star Configuration)



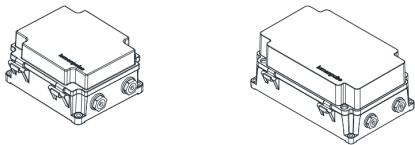
DMX/RDM control box. Up to six power and data outputs to fixtures or fixture runs. Consult CBX specification sheet and installation instructions for details. Lumenterminators provided with CBX (2x for Daisy Chain configuration, 6x for Star configuration), consult factory to order spares.

LDBI - Lumentalk Data Bridge Indoor



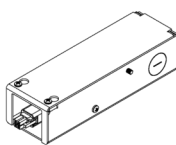
The Lumentalk Data Bridge Indoor is a digital interface that connects non-Lumentalk luminaires to the Lumentalk network, 0-10V or DMX output. Consult the Lumentalk Data Bridge Indoor specification sheet and installation instructions for details.

CBX-ENET - Ethernet Enabled (Daisy Chain or Star Configuration)



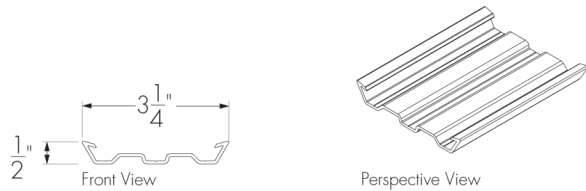
Ethernet control box. Up to four power and data outputs to fixture or fixture runs. Consult Ethernet CBX specification sheet and installation instructions for details.

WC - Wiring Compartment



The Lumenpulse Wiring Compartment is pre-wired with a leader cable, allowing the quick connection of conduits. Consult the Wiring Compartment specification sheet and installation instructions for details.

Alignment Track (Order Separately)



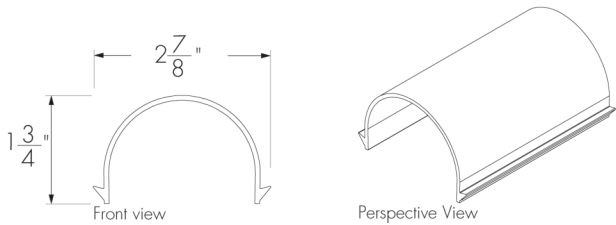
LCVAT-LENGTH-COLOR

LENGTH: 5 ft

COLOR: WH (White)

Alignment Track can only be used with ST Mounting Option. Alignment Track must be cut on site to desired length.

Alignment Track Cover (Order Separately)



LCV ARC-LENGTH-COLOR  
LENGTH: 5 ft  
COLOR: WH (White)

Alignment Track Cover must be used in combination with Alignment Track.  
Alignment Track Cover can be used to cover cable between two fixtures. To be cut on site to desired length.

How to Order

Housing	Certification	Voltage	Length	Wattage	Color and Color Temperature	Color Rendering <sup>(1)</sup>	Optic	Feeding Side	Control <sup>(4)</sup>	Mounting Options
LCV Lumencore Linear Cove	UL UL Compliant	120, 277 120 Volts to 277 Volts	12 12 in	4W 4 W/ft	22K 2200K	90 CRI 90+	AB Asymmetric	NF No Feed Information Required <sup>(2)</sup>  RF Right Feeding Side <sup>(3)</sup>  LF Left Feeding Side <sup>(3)</sup>	NO On/Off Control  PDA1 Professional 0- 10V Dimming 0.1% Linear Curve  PDA2 Professional 0- 10V Dimming 0.1% Logarithmic Curve  DALI DALI 2 T6 Enabled Dimming 0.1% <sup>(5)</sup>  DMX/RDM DMX/RDM Enabled Dimming 0.1% <sup>(6)</sup>	ST Standard Mounting <sup>(7) (8)</sup> <sup>(9) (10)</sup>  SM Slim Adjustable Mounting Continuously Adjustable <sup>(11)</sup>  WMC3 Wall Mounting Continuously Adjustable 3 in to Optical Center <sup>(11)</sup>  WMC4 Wall Mounting Continuously Adjustable 4 in to Optical Center <sup>(11)</sup>  WMC6 Wall Mounting Continuously Adjustable 6 in to Optical Center <sup>(11)</sup>  WMC12 Wall Mounting Continuously Adjustable 12 in to Optical Center <sup>(11)</sup>  WMC18 Wall Mounting Continuously Adjustable 18 in to Optical Center <sup>(11)</sup>  WMC24 Wall Mounting Continuously Adjustable 24 in to Optical Center <sup>(11)</sup>
			24 24 in	7W 7 W/ft	27K 2700K		CL Clear 120° x 120°			
			36 36 in	10W 10 W/ft	30K 3000K		FR Frosted 120° x 120°			
			48 48 in	13W 13 W/ft	35K 3500K					
					40K 4000K					
					RD Red					
					GR Green					
					BL Blue					
					AMB Phosphor Converted Amber (PC Amber)					

Notes:

1. Available for 22K, 27K, 30K, 35K and 40K color temperatures only.

2. Default option if AB Asymmetric Optic is not specified.

3. Specify for AB Asymmetric Optic only.

4. Lumentalk system is enabled with Lumentalk Data Bridge Indoor (LDBI) accessory. A PDA1, PDA2 or DMX/RDM Control Option must be specified in fixture code. See the typical wiring diagrams and consult factory for more details.

5. DALI 2 T6 controller required, provided by others.
6. A Control Box (CBX-DS or CBX-ST) and lumenID (UID) must be specified.

7. ST Mounting Option not available with CC Custom Color and Finish, or SP Special Color Finishes.

8. ST Mounting Option is required if the LCVAT Alignment Track will be ordered separately.

9. Two mounting brackets provided for each fixture length.

10. ST Mounting Option is not compatible with SH Shield Accessory.

11. One mounting bracket provided for 12 in fixtures. Two mounting brackets provided for 24 in, 36 in and 48 in fixtures.

How to Order

Finish	Cable Color <sup>(17)</sup>	Accessories	Shield	Shield Finish	Buy American Act
<b>MWH</b> Matte White	<b>WH</b> White	<b>NA</b> No Accessory <sup>(18)</sup>	<b>NH</b> No Shield	<b>MWH</b> Matte White	<b>BAA</b> Buy American <sup>(25)</sup>
<b>MBK</b> Matte Black	<b>BK</b> Black	<b>BS</b> Beam Softener	<b>SH</b> Shield <sup>(22)</sup> <sup>(23)</sup> <sup>(24)</sup>	<b>MBK</b> Matte Black	
<b>CC</b> Custom Color & Finish <sup>(7)</sup> <sup>(12)</sup> <sup>(13)</sup> <sup>(14)</sup> <sup>(15)</sup>		<b>VS</b> Visor <sup>(19)</sup> <sup>(20)</sup> <sup>(21)</sup>		<b>CC</b> Custom Color & Finish <sup>(7)</sup> <sup>(12)</sup> <sup>(13)</sup> <sup>(14)</sup> <sup>(15)</sup>	
<b>SP</b> Special Color (Choose From Standard Point Source Color Palette) <sup>(16)</sup>		<b>LV</b> Louver <sup>(19)</sup> <sup>(20)</sup> <sup>(21)</sup>		<b>SP</b> Special Color (Choose From Standard Point Source Color Palette) <sup>(16)</sup>	
		<b>HL</b> Honeycomb Louver <sup>(19)</sup> <sup>(20)</sup> <sup>(21)</sup>			
		<b>SN</b> Snoot <sup>(19)</sup> <sup>(20)</sup> <sup>(21)</sup>			

Notes:

7. ST Mounting Option not available with CC Custom Color and Finish, or SP Special Color Finishes.

12. Textured colours and finishes are not available.

13. Lumenpulse offers a wide selection of RAL CLASSIC (K7) colors with a smooth texture and high-gloss finish. Please consult factory for a list of available K7 colors, other RAL textures and glosses, or to match alternate color charts. Final color matching results may vary.

14. Setup charges apply for RAL colors. Consult factory for details.

15. Longer lead times can be expected for custom RAL color finishes.

16. Concrete Grey (CGY) and Parget White (PWH) are not available as special colors.

17. The Cable Color must match the Fixture Finish, unless CC or SP is specified in the product code. If CC or SP is specified as the Fixture Finish in the product code, a WH or BK cable can be specified.
18. Default option if AB Asymmetric Optic is specified. NA No Accessory must be specified in the product code.

19. Accessories are sold in 12 in sections. The length specified for the fixture will determine the number of accessories provided.

20. Not available if CC Custom Color and Finish or SP Special Color is specified in the product code.

21. Matte black interior surface, exterior finish matches housing color.

22. The SH Shield Accessory is not available with ST Mounting Option.

23. The SH Shield Accessory is not available with AB Asymmetric Optic.

24. The SH Shield Accessory can be combined with one other accessory.

25. Contact your Lumenpulse Sales Representative for more information on order volume details.