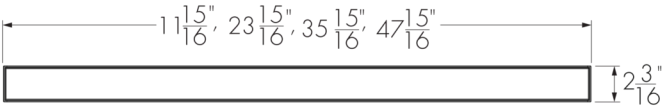


Project Name

Qty

Type

Catalog / Part Number



Top View



Front and Side Views  
36 in Fixture Shown  
Shown with Leader Cable

Photometric Summary (17 W/ft)

Symmetric		
	Delivered Output (lm)	Intensity (Peak cd)
8°x8°	6,692	231,840
10°x10°	6,643	155,860
10°x30°	6,504	46,823
10°x60°	7,249	30,034
10°x90°	6,709	14,617
30°x30°	6,379	18,213
30°x60°	6,346	9,593
30°x90°	5,868	6,689
60°x60°	6,295	5,715
90°x90°	6,147	3,812
30°x10°	6,184	40,706
60°x10°	6,422	25,559
60°x30°	6,309	10,824
90°x10°	6,116	14,815
W (120°)	4,950	1,702
Asymmetric		
NAS	6,183	82,064
WW	5,906	10,126
CAS	4,935	9,542

Description

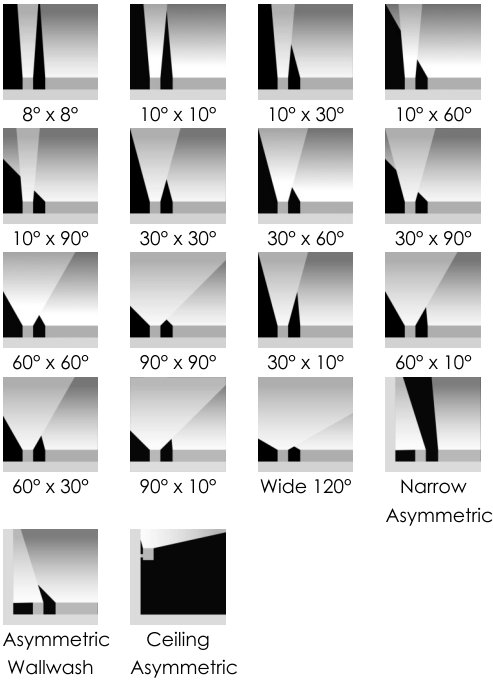
The Lumenfacade Pure Standalone is the purest expression of Lumenpulse form, design, quality, and performance. Designed from the inside out to be a cutting-edge expression of Lumenpulse quality, the Lumenfacade Pure possesses simplified control options, integrated accessories, and cohesive mounting options. Rethink everything you've thought about white light; think Lumenpulse.

Features

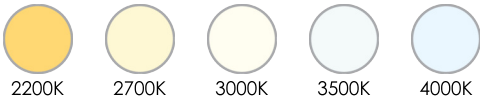
Length (Nominal)	12: 12 in, 24: 24 in, 36: 36 in, 48: 48 in
Color and Color Temperature	22K: 2200K, 27K: 2700K, 30K: 3000K, 35K: 3500K, 40K: 4000K
Vibration Rating	NVR: Buildings and Fixed Structures, VRN: Pole-Mounts, VRBO: Bridges and Overpasses
Fixed Mounting Options	FX: Fixed Mounting (0° Pivot Limit) STEM12: Stem Mounting 12 in STEM24: Stem Mounting 24 in STEM36: Stem Mounting 36 in STEM48: Stem Mounting 48 in ACC50: Aircraft Cable 50 in ACC100: Aircraft Cable 100 in

1. Based on 4000K, 4ft [1218mm].  
2. Photometric performance is measured in compliance with IESNA LM-79-24.  
3. 8x8, 10x10, 10x30, 10x60, 10x90, 30x30, 30x60, 30x90, 60x60, 90x90, 30x10, 60x10, 60x30, 90x10, W and CAS optics tested with CL lens. NAS and WW optics tested with HFR lens.  
4.  
Refer to the [Lumenfacade Pure Photometric Guide](#) on Lumenpulse website for information on other color temperatures.

Optic



Color and Color Temperature



Control

ON/OFF   0-10V   DALI 2 T6   Phase Dimming

Finish



Continuously Adjustable Mounting Options

**SM:** Slim Adjustable Mounting Continuously Adjustable (110° Pivot Limit)

**WMC3:** Wall Mounting Continuously Adjustable, 3.5 in to Optical Center (140° Pivot Limit)

**WMC12:** Wall Mounting Continuously Adjustable, 12 in to Optical Center (180° Pivot Limit)

**WMC24:** Wall Mounting Continuously Adjustable, 24 in to Optical Center (180° Pivot Limit)

**WMC1:** Wall Mounting Continuously Adjustable, 1.5 in to Optical Center (180° Pivot Limit)

**WMC6:** Wall Mounting Continuously Adjustable, 6 in to Optical Center (180° Pivot Limit)

**WMC18:** Wall Mounting Continuously Adjustable, 18 in to Optical Center (180° Pivot Limit)

Incrementally Adjustable Mounting Options

**WMI1:** Wall Mounting Incrementally Adjustable by 6°, 1.5 in to Optical Center (180° Pivot Limit)

**WMI6:** Wall Mounting Incrementally Adjustable by 6°, 6 in to Optical Center (180° Pivot Limit)

**WMI18:** Wall Mounting Incrementally Adjustable by 6°, 18 in to Optical Center (180° Pivot Limit)

**WMI3:** Wall Mounting Incrementally Adjustable by 6°, 3.5 in to Optical Center (140° Pivot Limit)

**WMI12:** Wall Mounting Incrementally Adjustable by 6°, 12 in to Optical Center (180° Pivot Limit)

**WMI24:** Wall Mounting Incrementally Adjustable by 6°, 24 in to Optical Center (180° Pivot Limit)

Canopy Finish

**BK:** Black Sandtex®, **SI:** Silver Sandtex®, **WH:** White, **CC:** Custom Color and Finish (Please Specify RAL Color)

Optical Accessories

**LV:** Radial Louver  
**LVAS:** Radial Louver Asymmetric  
**VS:** Visor  
**SH:** Shield

Warranty

5-year limited warranty

Performance

Maximum Delivered Output

1,820 lm (3.75 W/ft, 48 in fixture, 4000K, CRI 80+, 10° x 60°, CL Lens)  
4,958 lm (10 W/ft, 48 in fixture, 4000K, CRI 80+, 10° x 60°, CL Lens)  
7,249 lm (17 W/ft, 48 in fixture, 4000K, CRI 80+, 10° x 60°, CL Lens)

Maximum Delivered Intensity

58,192 cd at nadir (3.75 W/ft, 48 in fixture, 4000K, CRI 80+, 8° x 8°, CL lens)  
158,579 cd at nadir (10 W/ft, 48 in fixture, 4000K, CRI 80+, 8° x 8°, CL Lens)  
231,840 cd at nadir (17 W/ft, 48 in fixture, 4000K, CRI 80+, 8° x 8°, CL Lens)

Certifications



Illuminance at Distance	Minimum 1 fc at 247 ft (3.75 W/ft, 48 in fixture, 4000K, CRI 80+, 8° x 8°, CL Lens) Minimum 1 fc at 408 ft (10 W/ft, 48 in fixture, 4000K, CRI 80+, 8° x 8°, CL Lens) Minimum 1 fc at 493 ft (17 W/ft, 48 in fixture, 4000K, CRI 80+, 8° x 8°, CL Lens)
Color Consistency	2 SDCM
Lumen Maintenance	L70 (10K) > 60,000 hrs Ta 25 °C (TM-21 reported) L70 > 150,000 hrs Ta 25 °C (projected)* L90 (10K) = 55,600 hrs Ta 25 °C (TM-21 reported) L90 = 55,600 hrs Ta 25 °C (projected)* *Estimated based on in-situ case temperature and LM-80 report
Color Rendering	CRI 80+ Consult factory for CRI 90+

Physical

Housing Material	Low copper content extruded aluminum
Lens Material	Tempered glass
Hardware Material	Stainless steel
End Cap Material	Die cast aluminum
Gasket Material	Silicone
Surface Finish	<b>XD:</b> Luminaire treated with extra-durable, multi-step finish: zirconium pretreatment completed with corrosion-resistant primer and electrostatically-applied, powder coat paint finish
Weight	4 lbs (12 in fixture) 7.5 lbs (24 in fixture) 10.25 lbs (36 in fixture) 13.25 lbs (48 in fixture)

Electrical and Control

Voltage	120 to 277 volts
Wattage	<b>3.75W:</b> 3.75 W/ft, <b>10W:</b> 10 W/ft, <b>17W:</b> 17 W/ft
Control	<b>NO:</b> On/Off Control, <b>DIM:</b> 0-10V Dimming, <b>DALI:</b> DALI 2 T6 Enabled Dimming 0.1%, <b>PH:</b> Phase Dimming
Inrush Current (Peak)	Meets NEMA-410 requirements (Based on voltage and control specifications, consult factory for details)

Environmental

Storage Temperature	-40 °F to 185 °F
Start-up Temperature	-40 °F and up (NO, DIM and DALI controls) 14 °F and up (PH control)

Operating Temperature	For 3.75 W/ft and 10 W/ft fixtures: -40 °F to 122 °F (NO, DIM and DALI controls) 14 °F to 122 °F (PH control) For 17 W/ft fixtures: -40 °F to 104 °F (NO, DIM and DALI controls) 14 °F to 104 °F (PH control)
Ingress Protection Rating	IP66 IP67 (suitable for applications with temporary immersion in water only (no permanent immersion), proper drainage around the fixture is required). Consult factory for details
Impact Resistance Rating	IK07 (CL lens), IK07 (HFR lens), IK06 (FR lens) Consult factory for IK08 lens option
Application Wind Speed	Luminaires were designed based on AASHTO 2013 standard to ensure highest quality and safety. Installation should be validated by a local project engineer to ensure the luminaires are suitable for the wind speed and exposure of the specific application
Environment	Wet location rating

Accessories (Order Separately)

Cables	<b>LFLC:</b> Lumenfacade Leader Cable <b>LFJC:</b> Lumenfacade Jumper Cable <b>LFTJ:</b> Lumenfacade T-Junction
--------	---

Important

Virtual Patent Marking Notice

This website (<https://www.lmpg.com/patents-trademarks>) is provided to satisfy the virtual patent marking provisions of applicable jurisdictions. Some products listed may be covered by additional patents not referenced here.

Photometric Information

3.75 W/ft (3000K)

Symmetric		
	Delivered Output (lm)	Intensity (Peak cd)
8°x8°	1,557	53,944
10°x10°	1,546	36,265
10°x30°	1,513	10,895
10°x60°	1,687	6,988
10°x90°	1,561	3,401
30°x30°	1,484	4,238
30°x60°	1,477	2,232
30°x90°	1,365	1,556
60°x60°	1,465	1,330
90°x90°	1,430	887
30°x10°	1,439	9,471
60°x10°	1,494	5,947
60°x30°	1,468	2,518
90°x10°	1,423	3,447
W (120°)	1,152	396
Asymmetric		
NAS	1,439	19,094
WW	1,374	2,356
CAS	1,148	2,220

Based on 3000K, CRI 80+, 48 in fixture.

3.75 W/ft (4000K)

Symmetric		
	Delivered Output (lm)	Intensity (Peak cd)
8°x8°	1,680	58,192
10°x10°	1,667	39,121
10°x30°	1,633	11,753
10°x60°	1,820	7,539
10°x90°	1,684	3,669
30°x30°	1,601	4,571
30°x60°	1,593	2,408
30°x90°	1,473	1,679
60°x60°	1,580	1,434
90°x90°	1,543	957
30°x10°	1,552	10,217
60°x10°	1,612	6,415
60°x30°	1,583	2,717
90°x10°	1,535	3,719
W (120°)	1,243	427
Asymmetric		
NAS	1,552	20,598
WW	1,483	2,542
CAS	1,239	2,395

Based on 4000K, CRI 80+, 48 in fixture.

10 W/ft (3000K)

Symmetric		
	Delivered Output (lm)	Intensity (Peak cd)
8°x8°	4,243	147,002
10°x10°	4,212	98,826
10°x30°	4,124	29,689
10°x60°	4,596	19,044
10°x90°	4,254	9,268
30°x30°	4,045	11,548
30°x60°	4,024	6,083
30°x90°	3,721	4,241
60°x60°	3,992	3,624
90°x90°	3,898	2,417
30°x10°	3,921	25,810
60°x10°	4,072	16,206
60°x30°	4,000	6,863
90°x10°	3,878	9,394
W (120°)	3,139	1,079
Asymmetric		
NAS	3,921	52,034
WW	3,745	6,421
CAS	3,129	6,050

Based on 3000K, CRI 80+, 48 in fixture.

10 W/ft (4000K)

Symmetric		
	Delivered Output (lm)	Intensity (Peak cd)
8°x8°	4,577	158,579
10°x10°	4,544	106,608
10°x30°	4,449	32,027
10°x60°	4,958	20,543
10°x90°	4,589	9,998
30°x30°	4,363	12,458
30°x60°	4,341	6,562
30°x90°	4,014	4,575
60°x60°	4,306	3,909
90°x90°	4,205	2,607
30°x10°	4,230	27,843
60°x10°	4,393	17,482
60°x30°	4,315	7,404
90°x10°	4,183	10,133
W (120°)	3,386	1,164
Asymmetric		
NAS	4,229	56,132
WW	4,040	6,926
CAS	3,375	6,526

Based on 4000K, CRI 80+, 48 in fixture.

17 W/ft (3000K)

Symmetric		
	Delivered Output (lm)	Intensity (Peak cd)
8°x8°	6,203	214,916
10°x10°	6,158	144,482
10°x30°	6,029	43,405
10°x60°	6,720	27,842
10°x90°	6,219	13,550
30°x30°	5,913	16,883
30°x60°	5,883	8,893
30°x90°	5,440	6,201
60°x60°	5,836	5,298
90°x90°	5,698	3,534
30°x10°	5,733	37,734
60°x10°	5,953	23,693
60°x30°	5,848	10,034
90°x10°	5,669	13,734
W (120°)	4,589	1,578
Asymmetric		
NAS	5,732	76,073
WW	5,475	9,387
CAS	4,575	8,845

Based on 3000K, CRI 80+, 48 in fixture.

17 W/ft (4000K)

Symmetric		
	Delivered Output (lm)	Intensity (Peak cd)
8°x8°	6,692	231,840
10°x10°	6,643	155,860
10°x30°	6,504	46,823
10°x60°	7,249	30,034
10°x90°	6,709	14,617
30°x30°	6,379	18,213
30°x60°	6,346	9,593
30°x90°	5,868	6,689
60°x60°	6,295	5,715
90°x90°	6,147	3,812
30°x10°	6,184	40,706
60°x10°	6,422	25,559
60°x30°	6,309	10,824
90°x10°	6,116	14,815
W (120°)	4,950	1,702
Asymmetric		
NAS	6,183	82,064
WW	5,906	10,126
CAS	4,935	9,542

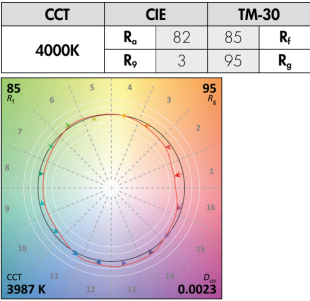
Based on 4000K, CRI 80+, 48 in fixture.

Photometric performance is measured in compliance with IESNA LM 79-08.

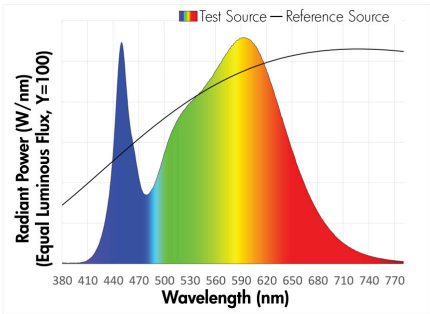
8x8, 10x10, 10x30, 10x60, 10x90, 30x30, 30x60, 30x90, 60x60, 90x90, 30x10, 60x10, 60x30, 90x10, W and CAS optics tested with CL lens. NAS and WW optics tested with HFR lens.

Chromaticity Data

TM-30 - 4000K

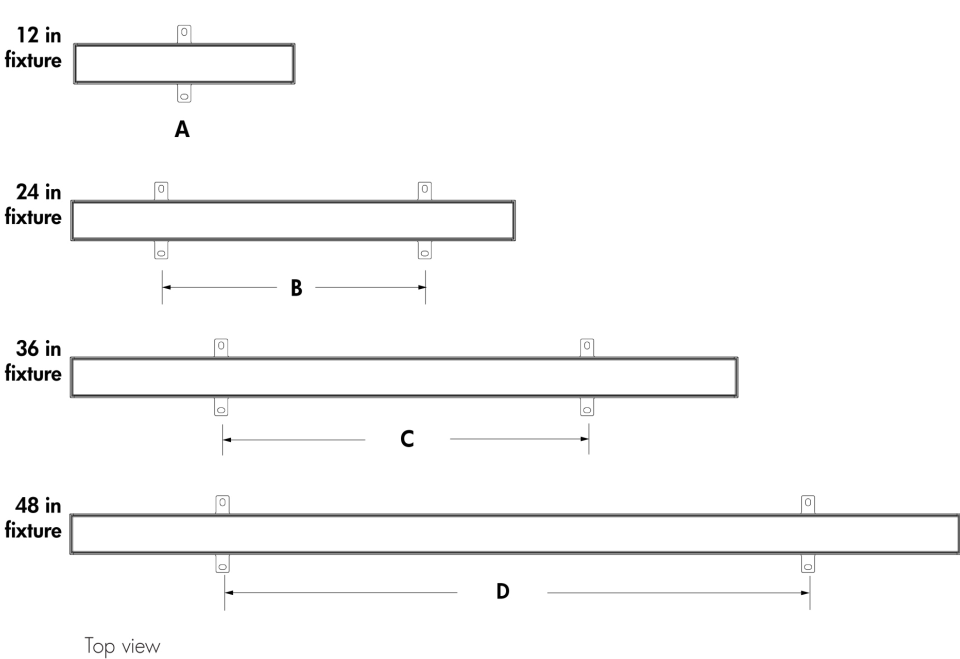


Spectral Power Distribution



Refer to the TM-30 and Spectral Power Distribution Guide on the website for information on other color temperatures.

Mounting Bracket Placement (Minimum and Maximum Distances)



- A - Bracket in the center of the fixture
  - B - Minimum 14 in to maximum 18 in
  - C - Minimum 20 1/2 in to maximum 29 in
  - D - Minimum 30 1/2 in to maximum 41 in
- FX mounting brackets shown.

The mounting bracket(s) must be centered on fixture and as symmetrical as possible. Distances must be respected for all installations. Applicable to FX, SM, WMC1, WMi1, WMC3, WMi3, WMC6, WMi6, WMC12, WMi12, WMC18, WMi18, WMC24, WMi24 mounting options only.

Mounting Options

FX - Fixed Mounting

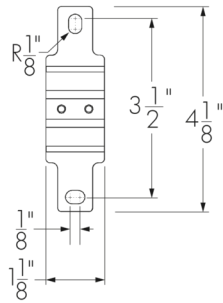


One mounting bracket provided for 12 in fixtures. Two mounting brackets provided for 24 in, 36 in and 48 in fixtures.

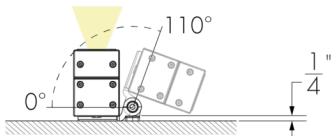
Weight of one FX Mounting Bracket: 0.11 lbs. Weight of two FX Mounting Brackets: 0.22 lbs.

For proper hardware selection, use the dimensions of the mounting option, the weight and EPA values of the mounting option, and the weight and EPA values of the fixture and accessories for your engineering calculations.

FX - Mounting Hole Pattern



SM - Slim Adjustable Mounting



One mounting bracket provided for 12 in fixtures. Two mounting brackets provided for 24 in, 36 in and 48 in fixtures.

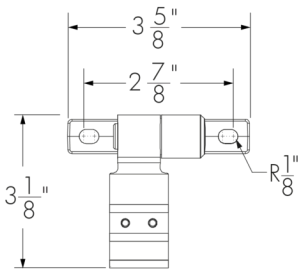
Weight of one SM Mounting Bracket: 0.26 lbs. Weight of two SM Mounting Brackets: 0.53 lbs.

Not suitable for pole-mounted or bridge and overpass applications.

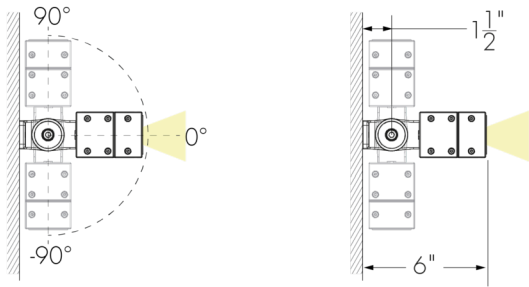
Not suitable when fixture is exposed to wind.

For proper hardware selection, use the dimensions of the mounting option, the weight and EPA values of the mounting option, and the weight and EPA values of the fixture and accessories for your engineering calculations.

SM - Mounting Hole Pattern

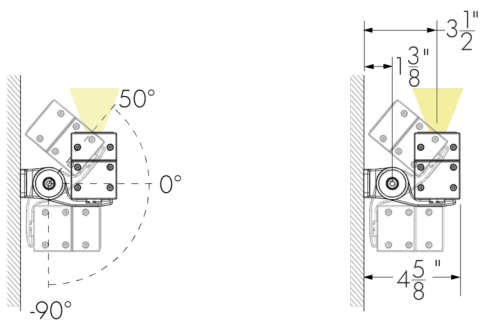


WMC1 - Wall Mounting Continuously Adjustable, 1.5 in to Optical Center  
WMI1 - Wall Mounting Incrementally Adjustable By 6°, 1.5 in to Optical Center



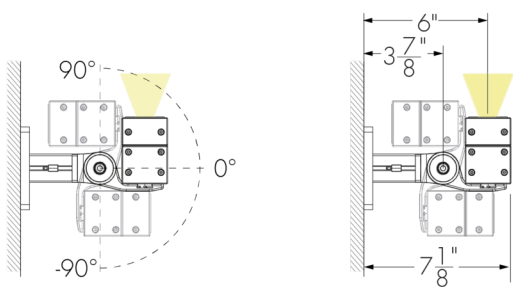
Weight of one WMC1/WMI1 Mounting Bracket: 0.62 lbs.  
Weight of two WMC1/WMI1 Mounting Brackets: 1.23 lbs.

WMC3 - Wall Mounting Continuously Adjustable, 3.5 in to Optical Center  
WMI3 - Wall Mounting Incrementally Adjustable by 6°, 3.5 in to Optical Center



Weight of one WMC3/WMI3 Mounting Bracket: 0.62 lbs.  
Weight of two WMC3/WMI3 Mounting Brackets: 1.23 lbs.

WMC6 - Wall Mounting Continuously Adjustable, 6 in to Optical Center  
WMI6 - Wall Mounting Incrementally Adjustable by 6°, 6 in to Optical Center

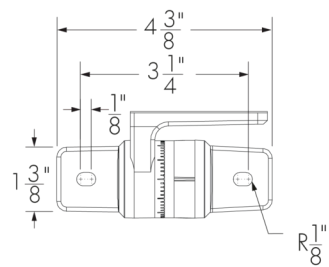


Weight of one WMC6/WMI6 Mounting Bracket: 1.21 lbs.  
Weight of two WMC6/WMI6 Mounting Brackets: 2.43 lbs.

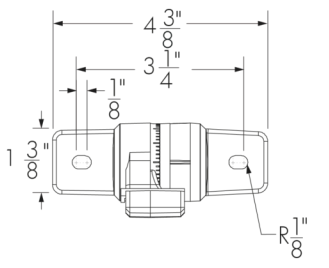
One mounting bracket provided for 12 in fixtures. Two mounting brackets provided for 24 in, 36 in and 48 in fixtures.

For proper hardware selection, use the dimensions of the mounting option, the weight and EPA values of the mounting option, and the weight and EPA values of the fixture and accessories for your engineering calculations.

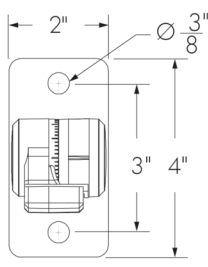
WMC1 WMI1 - Mounting Hole Pattern



WMC3 WMI3 - Mounting Hole Pattern

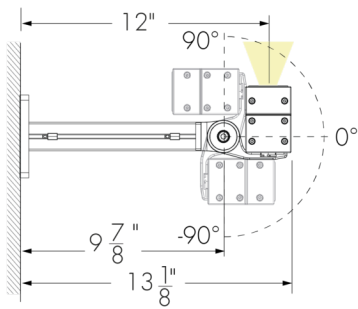


WMC6 WMI6 - Mounting Hole Pattern



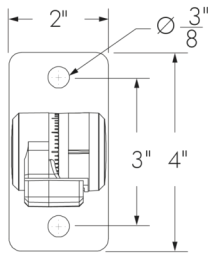


WMC12 - Wall Mounting Continuously Adjustable, 12 in to Optical Center  
WMi12 - Wall Mounting Incrementally Adjustable by 6°, 12 in to Optical Center

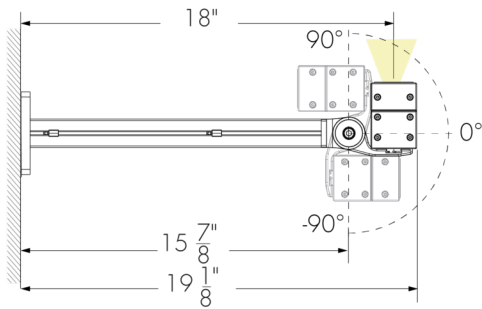


Weight of one WMC12/WMi12 Mounting Bracket: 1.72 lbs.  
Weight of two WMC12/WMi12 Mounting Brackets: 3.44 lbs.

WMC12 WMi12 - Mounting Hole Pattern

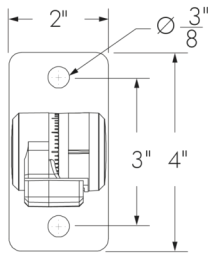


WMC18 - Wall Mounting Continuously Adjustable, 18 in to Optical Center  
WMi18 - Wall Mounting Incrementally Adjustable by 6°, 18 in to Optical Center

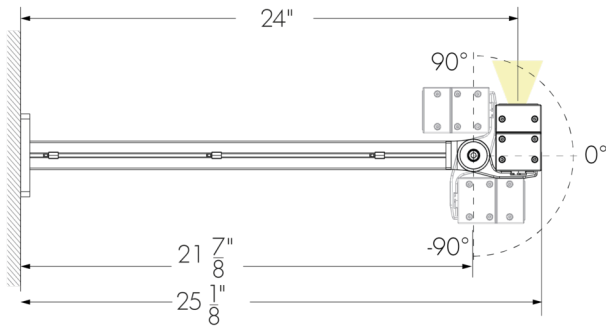


Weight of one WMC18/WMi18 Mounting Bracket: 2.31 lbs.  
Weight of two WMC18/WMi18 Mounting Brackets: 4.63 lbs.

WMC18 WMi18 - Mounting Hole Pattern

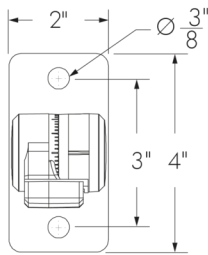


WMC24 - Wall Mounting Continuously Adjustable, 24 in to Optical Center  
WMi24 - Wall Mounting Incrementally Adjustable by 6°, 24 in to Optical Center



Weight of one WMC24/WMi24 Mounting Bracket: 2.87 lbs.  
Weight of two WMC24/WMi24 Mounting Brackets: 5.73 lbs.

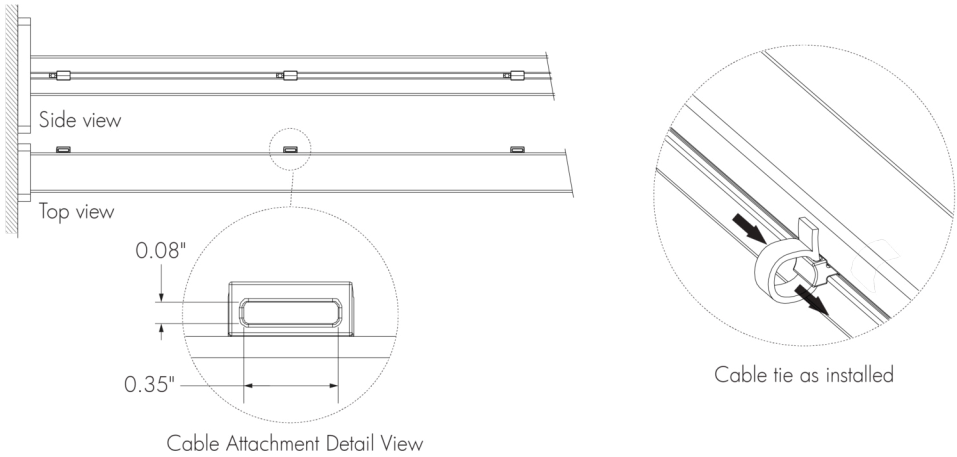
WMC24 WMi24 - Mounting Hole Pattern



One mounting bracket provided for 12 in fixtures. Two mounting brackets provided for 24 in, 36 in and 48 in fixtures.

For proper hardware selection, use the dimensions of the mounting option, the weight and EPA values of the mounting option, and the weight and EPA values of the fixture and accessories for your engineering calculations.

Cable Management System for Wall Mounting Brackets

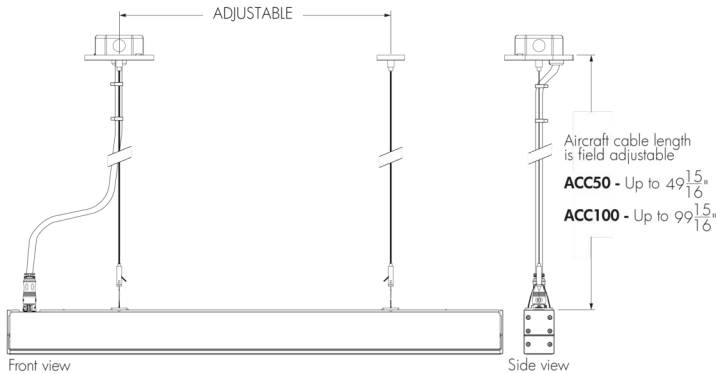


1 cable attachment provided for WMC6 and WMi6 mounting arms.  
2 cable attachments provided for WMC12, WMi12, WMC18 and WMi18 mounting arms.  
3 cable attachments provided for WMC24 and WMi24 mounting arms.

Maximum cable tie size: 0.35 in width, 0.08 in thickness.  
Cable ties for outdoor applications are recommended, provided by others.

Mounting Options

ACC50 - Aircraft Cable 50 in  
ACC100 - Aircraft Cable 100 in

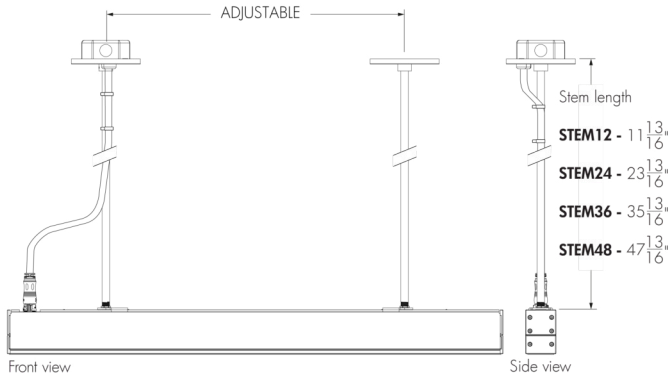


Consult factory for use with 12 in fixture length.

Weight of ACC50 Mounting Brackets: 0.33 lbs.  
Weight of ACC100 Mounting Brackets: 0.66 lbs.

Not suitable when fixture is exposed to wind.

STEM12 - Stem Mounting 12 in, STEM24 - Stem Mounting 24 in  
STEM36 - Stem Mounting 36 in, STEM48 - Stem Mounting 48 in



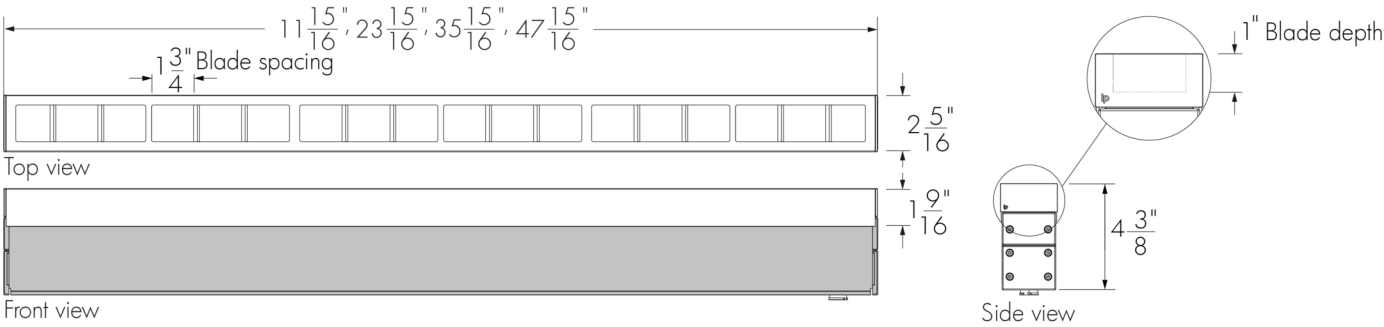
Consult factory for use with 12 in fixture length.

Weight of STEM12 Mounting Brackets: 0.77 lbs.  
Weight of STEM24 Mounting Brackets: 1.1 lbs.  
Weight of STEM36 Mounting Brackets: 1.43 lbs.  
Weight of STEM48 Mounting Brackets: 1.76 lbs.

Not suitable when fixture is exposed to wind.

Accessories

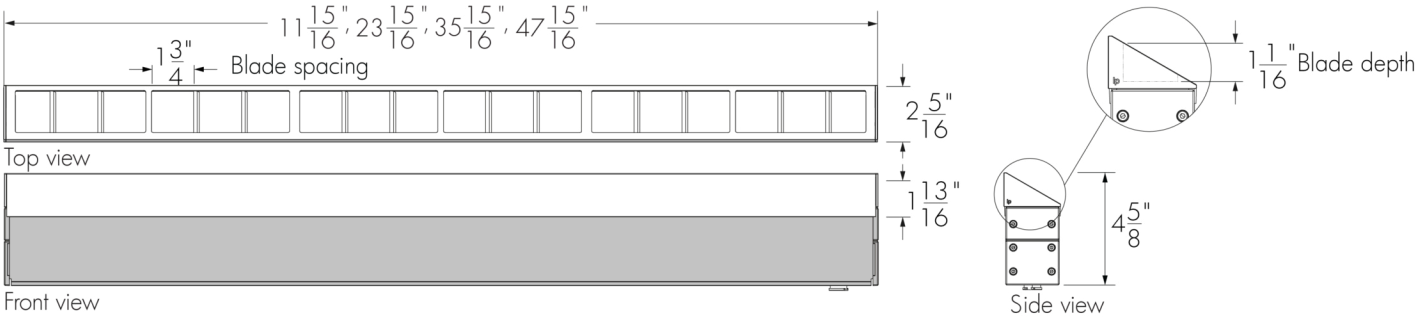
LV - Radial Louver



- A Radial Louver will affect beam distribution. Consult factory for application support.
- The Radial Louver is field installable. The Radial Louver can be combined with the Shield accessory; all other combinations are not possible.
- The exterior finish of the accessory will match the finish specified in the fixture order code (interior surface painted matte black).
- Not suitable for NAS, CAS and WW optics.
- Consult EPA Guide in the specification sheet for engineering calculations.

Weight of 12 in accessory: 0.65 lbs, and 24 in accessory: 1.25 lbs, weight of 36 in accessory: 1.75 lbs, weight of 48 in accessory: 2.3 lbs.  
Note: the weight of the accessory is in addition to the weight of the fixture.

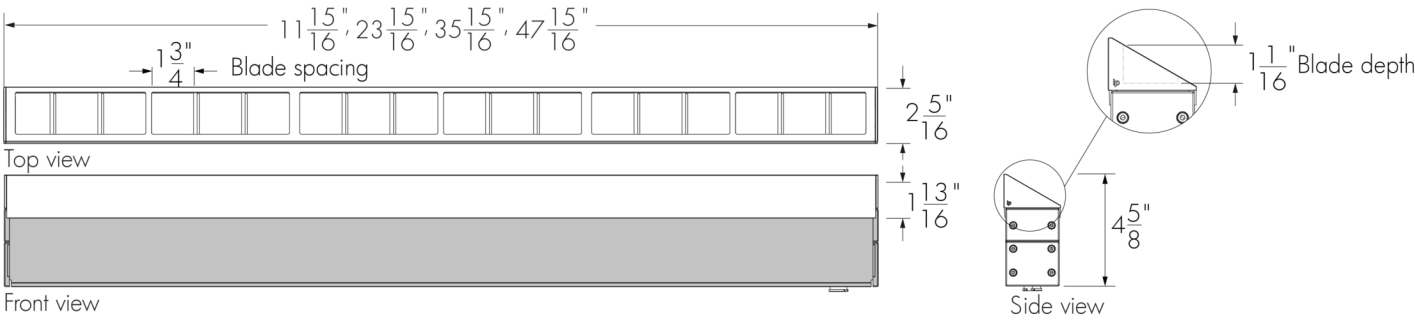
LVAS - Radial Louver Asymmetric



- A Radial Louver Asymmetric will affect beam distribution. Consult factory for application support.
- The Radial Louver Asymmetric is field installable. The Radial Louver Asymmetric can be combined with the Shield accessory; all other combinations are not possible.
- The exterior finish of the accessory will match the finish specified in the fixture order code (interior surface painted matte black).
- Consult EPA Guide in the specification sheet for engineering calculations.

Weight of 12 in accessory: 0.5 lbs, weight of 24 in accessory: 1 lbs, weight of 36 in accessory: 1.3 lbs, weight of 48 in accessory: 1.7 lbs.  
Note: the weight of the accessory is in addition to the weight of the fixture.

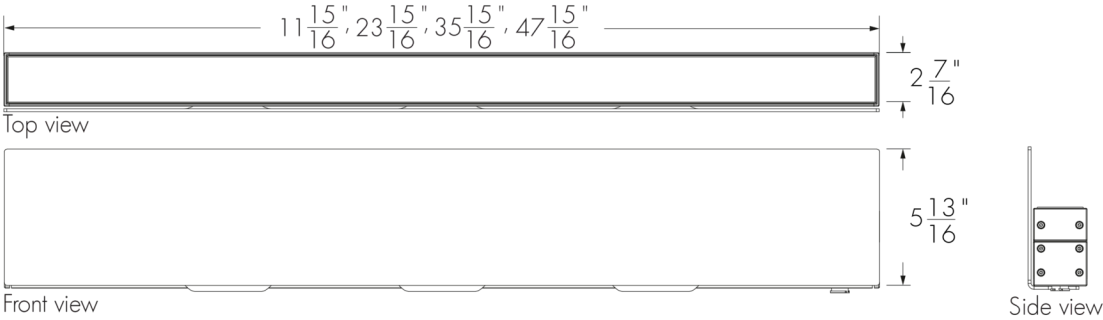
VS - Visor



- A Visor will affect beam distribution. Consult factory for application support.
- The Visor is field installable. The Visor can be combined with the Shield accessory; all other combinations are not possible.
- The exterior finish of the accessory will match the finish specified in the fixture order code with the exception of the inside surface of the Visor end caps, which are painted the same colour as the fixture. Interior surface painted matte black.
- Consult EPA Guide in the specification sheet for engineering calculations.

Weight of 12 in accessory: 0.4 lbs, weight of 24 in accessory: 0.8 lbs, weight of 36 in accessory: 1.2 lbs, weight of 48 in accessory: 1.5 lbs.  
Note: the weight of the accessory is in addition to the weight of the fixture.

SH - Shield



- A Shield will affect beam distribution. Consult factory for application support.
- The Shield is field installable. The Shield can be combined with the Louver, Louver Asymmetric or Visor accessories.
- No vibration rating available. The Shield can be installed in zones with wind speeds up to 120 mph. Consult factory for zones with wind speeds higher than 120 mph.
- The exterior finish of the accessory will match the finish specified in the fixture order code (interior surface painted matte black).
- Consult EPA Guide in the specification sheet for engineering calculations.

Weight of 12 in accessory: 2.5 lbs, weight of 24 in accessory: 4.75 lbs, weight of 36 in accessory: 7.25 lbs, weight of 48 in accessory: 9.5 lbs.  
Note: the weight of the accessory is in addition to the weight of the fixture.

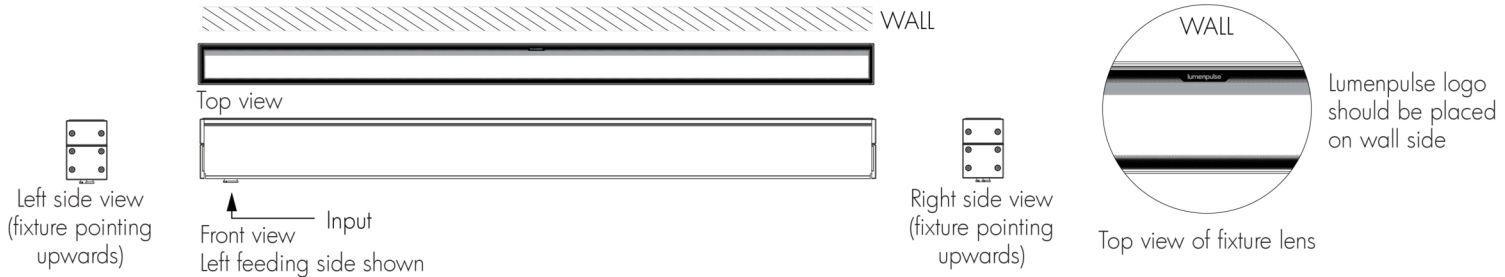
Lens and Optics Combinations Table

Lens/Optics	8x8	10x10	10x30	10x60	10x90	30x30	30x60	30x90	60x60	90x90	30x10	60x10	60x30	90x10	W	NAS	WW	CAS
CL Clear Lens	✓	✓	✓	✓	✓	✓	✓	✓	✓	✓	✓	✓	✓	✓	✓	✗	✗	✓
HFR Half-Frosted Lens	✓	✓	✓	✓	✓	✗	✗	✗	✗	✗	✗	✗	✗	✗	✗	✓	✓	✗
FR Frosted Lens	✓	✓	✓	✓	✓	✓	✓	✓	✓	✓	✓	✓	✓	✓	✓	✓	✓	✓

- ✓ Lens option
- ✗ Not available

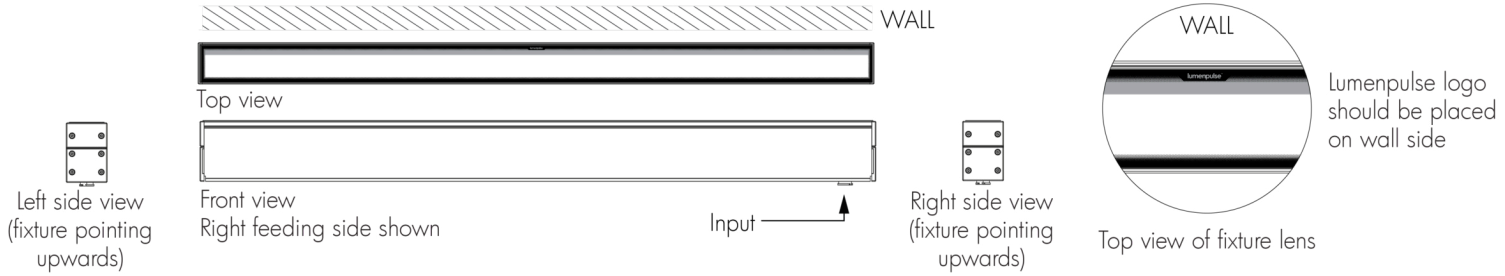
Half-Frosted Lens Details

Left Feeding Side



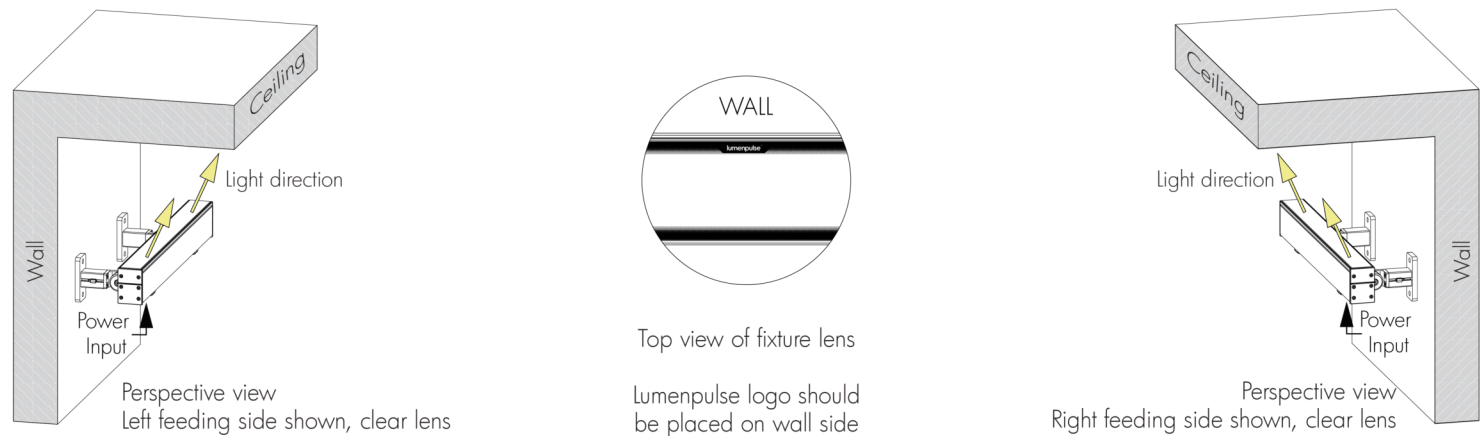
- Position frosted side of the lens and Lumenpulse logo along the wall.
- Fixture's feeding side is based on uplight installations. Feeding sides are reversed when fixture is used in a downlight application.

Right Feeding Side



- Position frosted side of the lens and Lumenpulse logo along the wall.
- Fixture's feeding side is based on uplight installations. Feeding sides are reversed when fixture is used in a downlight application.

Ceiling Asymmetric Optic Details



- Always position Lumenpulse logo on lens along the wall.
- Fixture's feeding side is based on uplight installations. Feeding sides are reversed when fixture is used in a downlight application.
- **Ceiling Asymmetric optic guidelines:** 18 in minimum setback, 1:5 setback/canopy depth ratio (based on CL lens).

Narrow Asymmetric and Asymmetric Wallwash Optics Details




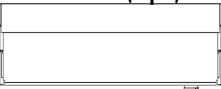
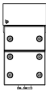
- Position frosted side of the lens and Lumenpulse logo along the wall.
- Fixture's feeding side is based on uplight installations. Feeding sides are reversed when fixture is used in a downlight application.
- **Narrow Asymmetric optic guidelines:** 6 in minimum setback, 1:12 setback ratio (based on HFR lens).
- **Asymmetric Wallwash optic guidelines:** 6 in minimum setback, 1:8 setback ratio (based on HFR lens).

EPA Guide - Fixture


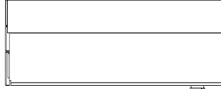

	12 in	24 in	36 in	48 in
EPA Top (sq ft)				
	0.237	0.476	0.715	0.954
EPA Front (sq ft)				
	0.348	0.698	1.048	1.396
EPA Side (sq ft)				
	0.064	0.064	0.064	0.064

EPA Guide - Fixture with Accessory



Fixture With Radial Louver Accessory

	12 in	24 in	36 in	48 in
EPA Top (sq ft) 	0.237	0.476	0.715	0.954
EPA Front (sq ft) 	0.474	0.950	1.427	1.904
EPA Side (sq ft) 	0.082	0.082	0.082	0.082



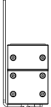
Fixture With Radial Louver Asymmetric Accessory

	12 in	24 in	36 in	48 in
EPA Top (sq ft) 	0.237	0.476	0.715	0.954
EPA Front (sq ft) 	0.485	0.974	1.463	1.951
EPA Side (sq ft) 	0.075	0.075	0.075	0.075

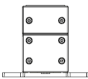
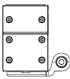
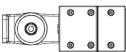
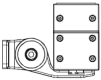
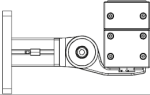
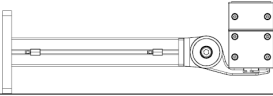
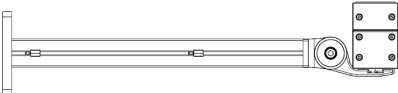

Fixture With Visor Accessory

	12 in	24 in	36 in	48 in
EPA Top (m <sup>2</sup> ) 	0.237	0.476	0.715	0.954
EPA Front (sq ft) 	0.485	0.974	1.463	1.951
EPA Side (sq ft) 	0.075	0.075	0.075	0.075

Fixture With Shield Accessory

	12 in	24 in	36 in	48 in
EPA Top (sq ft) 	0.237	0.476	0.715	0.954
EPA Front (sq ft) 	0.926	1.859	2.791	3.723
EPA Side (sq ft) 	0.064	0.064	0.064	0.064

EPA Guide - Mounting Option

	EPA Top/Side (sq ft)	
FX	N/A	
SM	0.01	
WMC1 WMi1	0.05	
WMC3 WMi3	0.04	
WMC6 WMi6	0.06	
WMC12 WMi12	0.14	
WMC18 WMi18	0.21	
WMC24 WMi24	0.29	



Wiring Color Code

UL Color Code	USE
Green	Ground
Black	Line
White	Neutral
Purple	0-10V + / Data +
Orange	0-10V - / Data -

Maximum Fixture Run Length Table

Lumenfacade Pure 3.75W/ft

Voltage	120V	230V	277V
Maximum Run of Fixtures	192ft	612ft	740ft

Lumenfacade Pure 10W/ft

Voltage	120V	230V	277V
Maximum Run of Fixtures	112ft	268ft	324ft

Lumenfacade Pure 17W/ft

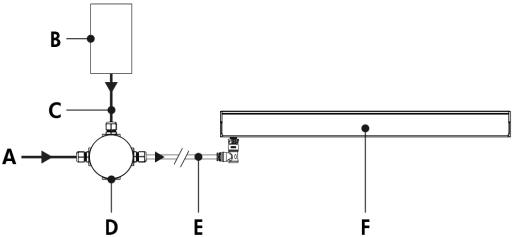
Voltage	120V	230V	277V
Maximum Run of Fixtures	84ft	164ft	196ft

Based on 48 in fixtures, NO (on/off) control, 25 ft leader cable for an end-to-end run with 2 ft jumper cables between fixtures.

Typical Wiring Diagram

All Control Options

Single Unit



- A - Power input (wiring by others)
- B - Dimmer/controller (for DIM, DALI and PH control options, by others)
- C - Data input (for DIM, DALI and PH control options, wiring by others)
- D - Junction box (by others)
- E - Leader Cable with 90° angle connector (LFLC)
- F - Lumenfacade Pure Standalone (LFP-SA)
- G - Sealing End Cap

Consult factory for specific applications and maximum fixture count/cable length recommendations.

DIM Control:

- 0-10V mA ratings: passive dimmer (Current Sink): 1mA per fixture, active dimmer (Current Source): 0.5mA per fixture.
- Less than 1% minimum dimming value

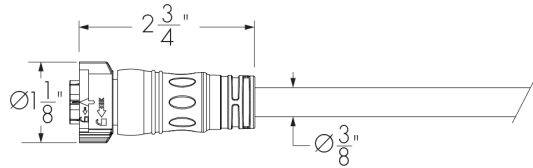
DALI Control:

- 64 DALI addressable device limitation (each fixture is an addressable device).
- DALI does not allow for control by foot, only by fixture.
- Commissioning may be required based on the selection of 3rd party DALI controller. Controller and commissioning provided by others.
- Less than 1% minimum dimming value.

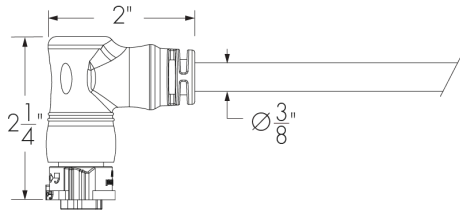
Refer to installation instructions for additional wiring details and wiring diagram with Lumenfacade T-Junction accessory.

Leader Cable (Order Separately)

LFCL - Lumenfacade Leader Cable (XC3P2D)



**180D** - Straight connector  
UL version shown. CE cable diameter is 0.5 in, consult European specification sheet for CE cable details.



**90D** - 90° angled connector

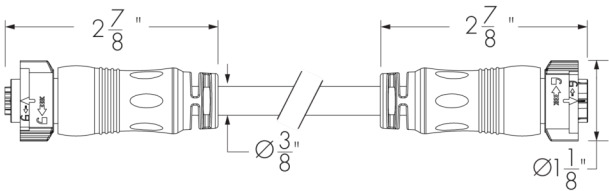
LFCL-TYPE-CERTIFICATION-VOLTAGE-LENGTH-CONNECTOR/CABLE TYPE-CONNECTOR SHAPE-CABLE/CONNECTOR COLOR

Please specify:  
**TYPE:** SA (Standalone); **CERTIFICATION:** UL or CE; **VOLTAGE:** 120\_277; **LENGTH:** 10 ft, 25 ft, 50 ft, 100 ft, 150 ft or 200 ft; **CONNECTOR/CABLE TYPE:** XC3P2D (5x 16AWG X-lock size); **CONNECTOR SHAPE:** 180D (Straight Connector) or 90D (90° Angle Connector); **CABLE/CONNECTOR COLOR:** BK (Black) or WH (White) (connectors are the same color as the specified cable color).

- Suitable for dimming/data and non-dimming applications.
- Consult Lumenfacade Leader Cable specification sheet for additional information.

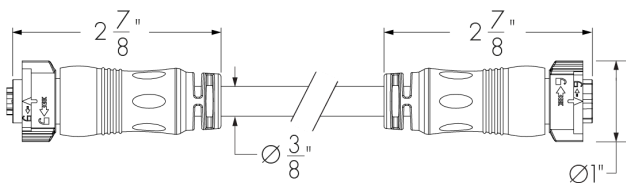
Jumper Cable (Order Separately)

LFJC - Lumenfacade Jumper Cable (XC3P2D)



UL version shown. Consult European specification sheet for CE cable details.

LFJC - Lumenfacade Jumper Cable (XC3P3D)



UL version shown. Consult European specification sheet for CE cable details.

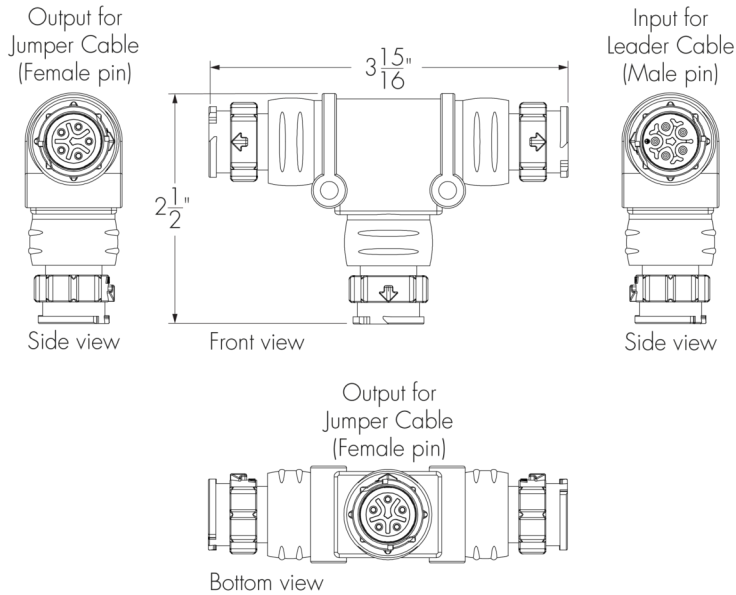
LFJC-CERTIFICATION-VOLTAGE-LENGTH-CONNECTOR/CABLE TYPE-CONNECTOR SHAPE-CABLE/CONNECTOR COLOR

Please specify:  
**CERTIFICATION:** UL or CE; **VOLTAGE:** 120\_277; **LENGTH:** 1 ft, 2 ft, 5 ft, 10 ft, 25 ft or 50 ft; **CONNECTOR/CABLE TYPE:** XC3P2D (5x 16AWG X-lock size) or XC3P3D (3x14AWG + 3x24AWG X-lock C-size); **CONNECTOR SHAPE:** 180D (straight connector); **CABLE/CONNECTOR COLOR:** BK (Black) or WH (White) (connectors are the same color as the specified cable color).

- Suitable for dimming/data and non-dimming applications.
- Consult Lumenfacade Jumper Cable specification sheet for additional information.
- For closely spaced fixtures, a minimum jumper cable length of 2 ft is recommended to accommodate a cable loop between fixtures.
- Minimum spacing for 36 in and 48 in fixtures in a row: 0.35 in.
- Minimum spacing for 12 in and 24 in fixtures at the end of a fixture run, next to 36 in and 48 in fixtures: 0.35 in.
- Minimum spacing for 12 in and 24 in fixtures in a row: 2.75 in.
- Minimum bend radius 2.63 in.

T-Junction (Order Separately)

LFTJ - Lumenfacade T-Junction



LFTJ-CONNECTOR/CABLE TYPE-CABLE/CONNECTOR COLOR

Please specify:

**CONNECTOR/CABLE TYPE:** XC3P2D (5x 16AWG X-lock size); **CABLE/CONNECTOR COLOR:** BK (Black) or WH (White).

- Suitable for dimming/data and non-dimming applications with LFP fixtures.
- Consult factory for guidelines on the use of T-Junctions in a fixture run.
- Consult Lumenfacade T-Junction specification sheet for additional information.
- The T-Junction accessory can be used to connect a feed input, with a throughput to a localized run of fixtures and an output to the rest of your installation.
- Waterproof sealing end cap is mandatory for any unused connector. One (1) included with every T-Junction accessory.

How to Order

Housing	Type	Certification	Voltage	Length	Wattage	Color and Color Temperature	Color Rendering	Optic	Lens	Feeding Side
LFP Lumenfacade Pure	SA Standalone	UL UL Compliant  CE CE Compliant (Class I) <sup>(1)</sup>	120_277 120 Volts to 277 Volts <sup>(1)</sup>  120 120 Volts <sup>(2)</sup> <sup>(3)</sup> <sup>(4)</sup>	12 12 in <sup>(2)</sup>	3.75W 3.75 W/ft <sup>(5)</sup>	22K 2200K	80 CRI 80+ <sup>(6)</sup>	8x8 8° x 8° <sup>(7)</sup>	CL Clear Lens <sup>(11)</sup>  HFR Half-Frosted Lens <sup>(12)</sup>  FR Frosted Lens <sup>(13)</sup>	NF No Feed Information Required  LF Left Feeding Side  RF Right Feeding Side
				24 24 in	10W 10 W/ft	27K 2700K		10x10 10° x 10° <sup>(7)</sup>		
				36 36 in	17W 17 W/ft	30K 3000K		10x30 10° x 30°		
				48 48 in		35K 3500K		10x60 10° x 60°		
						40K 4000K		10x90 10° x 90°		
								30x30 30° x 30° <sup>(8)</sup> <sup>(9)</sup>		
								30x60 30° x 60° <sup>(8)</sup> <sup>(9)</sup>		
								30x90 30° x 90° <sup>(8)</sup> <sup>(9)</sup>		
								60x60 60° x 60° <sup>(8)</sup> <sup>(9)</sup>		
								90x90 90° x 90° <sup>(8)</sup> <sup>(9)</sup>		
								30x10 30° x 10° <sup>(8)</sup> <sup>(9)</sup>		
								60x10 60° x 10° <sup>(8)</sup> <sup>(9)</sup>		
								60x30 60° x 30° <sup>(8)</sup> <sup>(9)</sup>		
								90x10 90° x 10° <sup>(8)</sup> <sup>(9)</sup>		
								W Wide 120° <sup>(8)</sup> <sup>(9)</sup>		
								NAS Narrow Asymmetric <sup>(10)</sup>		
								WW Asymmetric Wallwash <sup>(10)</sup>		
								CAS Ceiling Asymmetric <sup>(8)</sup>		

Notes:

1. CE certification is available for 120\_277 voltage option only.

2. Available for UL certification only.

3. Available for 24 in, 36 in and 48 in fixture lengths only.

4. Available for 3.75W wattage option when combined with 48 in lengths only.

5. 3.75W Wattage option is suitable for ASHRAE Zone 3 requirement when operated on 120V and for Zone 4 when operated on 277V.

6. Consult factory for CRI 90+.
7. For best results use a minimum 3 in setback from surface. Contact factory for application support.

8. Can be combined with a CL or FR lens only.

9. No feed information required.

10. Can be combined with a HFR or FR lens only.

11. When CL lens is combined with CAS optic, LF or RF feeding side must be specified.

12. When HFR lens is specified, LF or RF feeding side must be specified.

13. When FR lens is combined with WW, NAS or CAS optic, LF or RF feeding side must be specified.

How to Order

Control	Vibration Rating <sup>(18)</sup>	Mounting Options	Canopy Finish <sup>(35)</sup>	Environment	Finish	Accessories <sup>(41)</sup> <sup>(42)</sup>	Buy American Act
<b>NO</b> On/Off Control  <b>DIM</b> 0-10V Dimming <sup>(14)</sup>  <b>DALI</b> DALI 2 T6 Enabled Dimming 0.1% <sup>(15)</sup>  <b>PH</b> Phase Dimming <sup>(2)</sup> <sup>(3)</sup> <sup>(4)</sup> <sup>(16)</sup> <sup>(17)</sup>	<b>NVR</b> Buildings and Fixed Structures <sup>(19)</sup>  <b>VRN</b> Pole-Mounts <sup>(20)</sup> <sup>(21)</sup> <sup>(22)</sup>  <b>VRBO</b> Bridges and Overpasses <sup>(23)</sup> <sup>(24)</sup>	<b>FX</b> Fixed Mounting (0° Pivot Limit) <sup>(25)</sup> <sup>(26)</sup>  <b>SM</b> Slim Adjustable Mounting Continuously Adjustable (110° Pivot Limit) <sup>(26)</sup> <sup>(27)</sup> <sup>(28)</sup>  <b>WMC1</b> Wall Mounting Continuously Adjustable, 1.5 in to Optical Center (180° Pivot Limit) <sup>(26)</sup> <sup>(28)</sup> <sup>(29)</sup>  <b>WMI1</b> Wall Mounting Incrementally Adjustable by 6°, 1.5 in to Optical Center (180° Pivot Limit) <sup>(25)</sup> <sup>(26)</sup>  <b>WMC3</b> Wall Mounting Continuously Adjustable, 3.5 in to Optical Center (140° Pivot Limit) <sup>(26)</sup> <sup>(28)</sup> <sup>(29)</sup>  <b>WMI3</b> Wall Mounting Incrementally Adjustable by 6°, 3.5 in to Optical Center (140° Pivot Limit) <sup>(25)</sup> <sup>(26)</sup>  <b>WMC6</b> Wall Mounting Continuously Adjustable, 6 in to Optical Center (180° Pivot Limit) <sup>(26)</sup> <sup>(28)</sup> <sup>(30)</sup>  <b>WMI6</b> Wall Mounting Incrementally Adjustable by 6°, 6 in to Optical Center (180° Pivot Limit) <sup>(26)</sup> <sup>(31)</sup>  <b>WMC12</b> Wall Mounting Continuously Adjustable, 12 in to Optical Center (180° Pivot Limit) <sup>(26)</sup> <sup>(30)</sup>  <b>WMI12</b> Wall Mounting Incrementally Adjustable by 6°, 12 in to Optical Center (180° Pivot Limit) <sup>(26)</sup> <sup>(31)</sup>  <b>WMC18</b> Wall Mounting Continuously Adjustable, 18 in to Optical Center (180° Pivot Limit) <sup>(26)</sup> <sup>(28)</sup> <sup>(30)</sup>  <b>WMI18</b> Wall Mounting Incrementally Adjustable by 6°, 18 in to Optical Center (180° Pivot Limit) <sup>(26)</sup> <sup>(31)</sup>  <b>WMC24</b> Wall Mounting Continuously Adjustable, 24 in to Optical Center (180° Pivot Limit) <sup>(26)</sup> <sup>(28)</sup> <sup>(30)</sup>  <b>WMI24</b> Wall Mounting Incrementally Adjustable by 6°, 24 in to Optical Center (180° Pivot Limit) <sup>(26)</sup> <sup>(31)</sup>  <b>STEM12</b> Stem Mounting 12 in <sup>(27)</sup> <sup>(28)</sup> <sup>(32)</sup> <sup>(33)</sup> <sup>(34)</sup>  <b>STEM24</b> Stem Mounting 24 in <sup>(27)</sup> <sup>(28)</sup> <sup>(32)</sup> <sup>(33)</sup> <sup>(34)</sup>  <b>STEM36</b> Stem Mounting 36 in <sup>(27)</sup> <sup>(28)</sup> <sup>(32)</sup> <sup>(33)</sup> <sup>(34)</sup>  <b>STEM48</b> Stem Mounting 48 in <sup>(27)</sup> <sup>(28)</sup> <sup>(32)</sup> <sup>(33)</sup> <sup>(34)</sup>  <b>ACC50</b> Aircraft Cable 50 in <sup>(27)</sup> <sup>(28)</sup> <sup>(32)</sup> <sup>(33)</sup> <sup>(34)</sup>  <b>ACC100</b> Aircraft Cable 100 in <sup>(27)</sup> <sup>(28)</sup> <sup>(32)</sup> <sup>(33)</sup> <sup>(34)</sup>	<b>BK</b> Black Sandtex®  <b>SI</b> Silver Sandtex®  <b>WH</b> White  <b>CC</b> Custom Color & Finish <sup>(36)</sup> <sup>(37)</sup> <sup>(38)</sup>	<b>XD</b> Extra durable multi-step finish <sup>(39)</sup> <sup>(40)</sup>	<b>BK</b> Black Sandtex®  <b>BRZ</b> Bronze Sandtex®  <b>SI</b> Silver Sandtex®  <b>WH</b> Smooth White  <b>BKTX</b> Textured Black  <b>BRZTX</b> Textured Bronze Non-Metallic  <b>GRATX</b> Textured Medium Gray  <b>GRNTX</b> Textured Green  <b>WHTX</b> Textured White  <b>CC</b> Custom Color & Finish <sup>(36)</sup> <sup>(37)</sup> <sup>(38)</sup>	<b>NA</b> No Accessory  <b>LV</b> Radial Louver <sup>(27)</sup> <sup>(43)</sup>  <b>LVAS</b> Radial Louver Asymmetric <sup>(27)</sup>  <b>VS</b> Visor <sup>(27)</sup>  <b>SH</b> Shield <sup>(27)</sup> <sup>(44)</sup>	<b>BAA</b> Buy American <sup>(45)</sup> <sup>(46)</sup>

Notes:

2. Available for UL certification only.

3. Available for 24 in, 36 in and 48 in fixture lengths only.
4. Available for 3.75W wattage option when combined with 48 in lengths only.

14. Minimum dimming value is less than 1%.

15. DALI 2 T6 controller required, provided by others.

16. Available for 120V voltage option only.

17. PH contol option is ELV and TRIAC.

18. Consult factory for vibration rating requirements on vertical installations.

19. Available for all mounting options.

20. Available for FX, WMC1, WMi1, WMC3 and WMi3 mounting options when combined with VRN vibration rating. All other mounting options may have installation limitations, and a review is needed for approval. Consult factory.

21. Specify only if a normal application is required as per ANSI 136.31 2018.

22. Consult factory for pole mounting accessories.

23. Available for FX, WMi1, and WMi3 mounting options when combined with VR8O vibration rating. All other mounting options may have installation limitations, and a review is needed for approval. Consult factory.

24. Specify only if a bridge or overpass application is required as per ANSI 136.31 2018.

25. Vibration tested in accordance with ANSI 136.31 2018 at 3Gv.

26. One mounting bracket provided for 12 in fixtures. Two mounting brackets provided for 24 in, 36 in and 48 in fixtures.

27. Available with NVR vibration rating only. Installation limitations may apply for other vibration rating options, and a review is needed for approval. Consult factory.

28. Not suitable for bridge and overpass applications.

29. Vibration tested in accordance with ANSI 136.31 2018 at 1.5Gv.

30. Vibration tested in accordance with ANSI 136.31 2018 at 2.3Gv.

31. Vibration tested in accordance with ANSI 136.31 2018 at 4.6Gv.
32. Two mounting brackets provided for each fixture length.

33. Consult factory for use with 12 in fixture length.

34. Not suitable when fixture is exposed to wind.

35. Applicable to STEM12, STEM24, STEM36, STEM48, ACC50 and ACC100 mounting options only.

36. Lumenpulse offers a wide selection of RAL CLASSIC (K7) colors with a smooth texture and high-gloss finish. Please consult factory for a list of available K7 colors, other RAL textures and glosses, or to match alternate color charts. Final color matching results may vary.

37. Setup charges apply for RAL colors. Consult factory for details.

38. Longer lead times can be expected for custom RAL color finishes.

39. Zirconium pretreatment completed with corrosion-resistant primer and electrostatically-applied powder coat paint finish.

40. For natatorium or full salt spray applications, consult factory.

41. SH accessory can be combined with LV, LVAS or VS accessories. All other combinations are not possible.

42. The exterior finish of the accessory will match the finish specified in the fixture order code (interior surface painted matte black).

43. Available for 8x8, 10x10, 10x30, 10x60, 10x90, 30x30, 30x60, 30x90, 60x60, 90x90, 30x10, 60x10, 60x30, 90x10 and W optics only.

44. Not suitable for bridge and overpass applications. The Shield can be installed in zones with wind speeds up to 120 mph. Consult factory for zones with wind speeds higher than 120 mph.

45. Not available with CE certification option.

46. Contact your Lumenpulse Sales Representative for more information on order volume details.