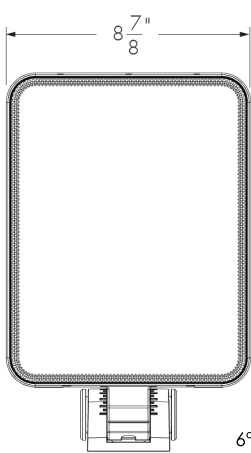
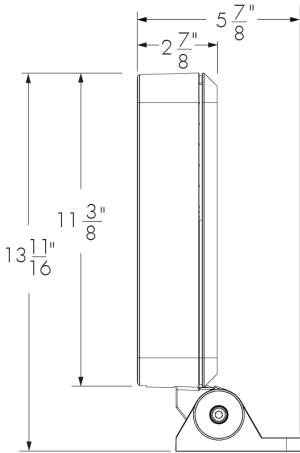


Project Name _____ Qty _____

Type _____ Catalog / Part Number _____



Front View
6° Increment Pivot



Side View

Photometric Summary

Symmetric

	Delivered output (lm)	Intensity (peak cd)
XN (3°)	4,259	593,580
VN (6°)	3,314	172,676
NS (10°)	5,543	82,608
NF (20°)	5,673	53,203
M (30°)	5,198	28,246
FL (40°)	4,648	11,469
WFL (60°)	4,626	4,677

Asymmetric

	Delivered output (lm)	Intensity (peak cd)
NAS	3,687	56,790
WW	4,544	13,924

Roadway

	Delivered output (lm)	BUG rating
2-Type II	4,394	B:1 U:0 G:1
3-Type III	4,513	B:1 U:0 G:1
4-Type IV	3,978	B:1 U:0 G:1
5S-Type VS	4,417	B:2 U:0 G:1

1. Based on 4000K.
2. Photometric performance is measured in compliance with IESNA LM-79-24.
3. Refer to IES files for photometric information on distributions with backlight shield options (2BLS, 3BLS and 4BLS).
4. Refer to the [Lumenquad White and Static Colors Photometric Guide](#) on Lumenpulse website for information on other color temperatures.

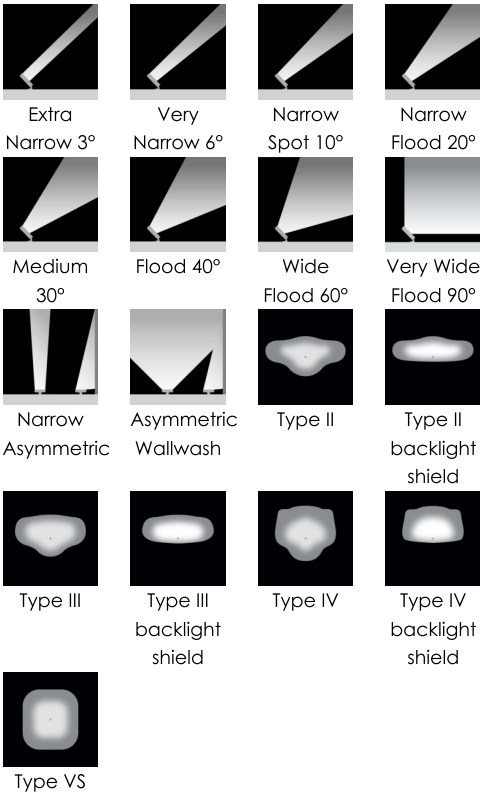
Description

The Lumenquad Large, 50W LED luminaire, has a sleek 2 7/8 in profile with no visible wiring or hardware and seamlessly integrates with any architecture. Lumenpulse's latest generation of LED boards possess an optimized candela and lumens recipe for both Narrow and Wide optics. The Lumenquad Large is the epitome of versatility and can be configured with numerous options including optics for wallwash, floodlighting, or street lighting, a choice of color temperatures and colors, as well as various mounting options, accessories, controls, and multiple standard finishes.

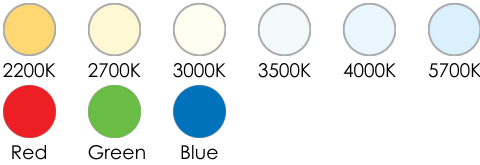
Features

Color and Color Temperature	2200K, 2700K, 3000K, 3500K, 4000K, 5700K, Red, Green, Blue
Optics (Nominal Distribution)	XN (3°), VN (6°), NS (10°), NF (20°), M (30°), FL (40°), WFL (60°), VWFL (90°), NAS (Narrow Asymmetric), WW (Asymmetric Wallwash), Type II, Type II backlight shield, Type III, Type III backlight shield, Type IV, Type IV backlight shield, Type VS
Mounting Options	Surface Mount, Wall Mount Bracket with Decorative Cover, Wall Mount Bracket without Decorative Cover, Recessed JBOX Wall Mount with Decorative Cover, Recessed JBOX Wall Mount Without Decorative Cover, Pole Mount, Tenon Mount, Stake Mount, All mounting options have a pivot adjustable in 6° increments, consult factory for universal pivot option.
Optical Options (Factory Installed)	Linear Spread Lens Horizontal Distribution, Linear Spread Lens Vertical Distribution, Honeycomb Louver
Option	Corrosion-Resistant Coating for Hostile Environments
Power Consumption	50 W
Warranty	5-year limited warranty
Performance	
Maximum Delivered Output	5,673 lm (4000K, NF 20°)

Optic



Color and Color Temperature



Control



Ratings



Certifications



Maximum Delivered Intensity	593,580 cd at nadir (4000K, XN 3°)
Illuminance at Distance	Minimum 1 fc at 774 ft (4000K, XN 3°)
Color Consistency	3 SDCM
Color Rendering	CRI 80+
Lumen Maintenance	L70 > 250,000 hrs (Ta 25 °C) (> 80,000 hrs for XN 3°, VN 6°, NAS optics only)

Physical

Housing Material	Low copper content high pressure die-cast aluminum
Lens Material	Clear tempered glass
Hardware Material	Stainless steel
Gasket Material	Silicone
Surface Finish	Electrostatically applied polyester powder coat
Weight	15 lbs
EPA	Front = 0.84 ft², Side = 0.23 ft², Front 45°= 0.79 ft²

Electrical and Control

Voltage	100 to 277 volts
Fixture Cable	Power and data in one cable
Conductors	3C #16-3 (NO, LT control) 5C #16-5 (DIM, DALI, ES control) 6C #14-3/ #24-3 (DMX/RDM control)
Control	On/Off Control, Lumentalk, 0-10V Dimming, DALI Dimming, DMX/RDM Enabled
Resolution (DMX/RDM)	Per fixture, 8-bit or 16-bit

Environmental

Storage Temperature	
Start-up Temperature	-13 °F to 122 °F
Operating Temperature	-40 °F to 122 °F
Ingress Protection Rating	IP66 Wet location rated
Impact Resistance Rating	IK10
Application Wind Speed	Luminaires were designed based on AASHTO 2013 standard to ensure highest quality and safety. Installation should be validated by a local project engineer to ensure the luminaires are suitable for the wind speed and exposure of the specific application

Accessories (Order Separately)

Optical Accessories	Snoot, Lumenquad Large Visor, Linear Spread Lens Adjustable, Wire Guard
Control Boxes	DMX/RDM enabled (Daisy Chain or Star Configuration), Ethernet enabled (Daisy Chain or Star Configuration)

Control Systems	Pharos® Lighting Control Kit (PHAROS), Pharos® Expert Control Kit (EXPERT)
Diagnostic and Addressing Tools	LumenID (LID)

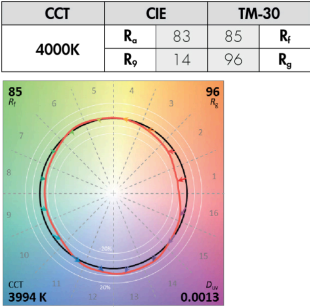
Important

Virtual Patent Marking Notice

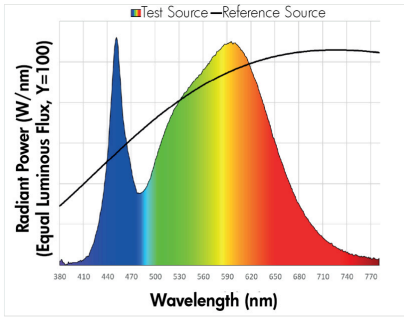
This website (<https://www.lmpg.com/patents-trademarks>) is provided to satisfy the virtual patent marking provisions of applicable jurisdictions. Some products listed may be covered by additional patents not referenced here.

Chromaticity Data

TM-30 - 4000K

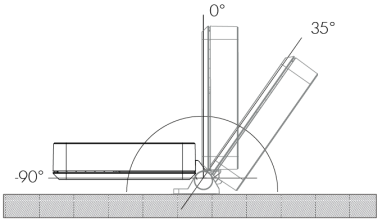


Spectral Power Distribution

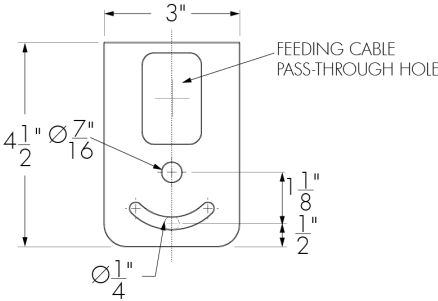


Mounting Options

SM - Surface Mount

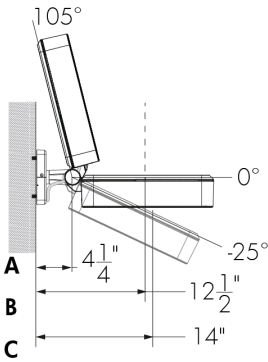


SM - Mounting Hole Pattern

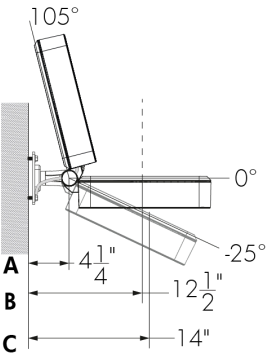


The SM mounting option cannot be interchanged with any other mounting option. All others mountings are interchangeable. Consult factory for details.

WM - Wall Mount Bracket with Decorative Cover

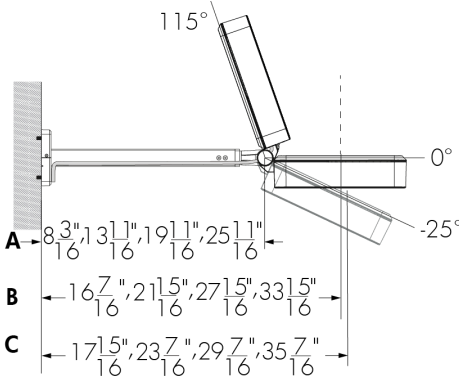


WMNC - Wall Mount Bracket Without Decorative Cover

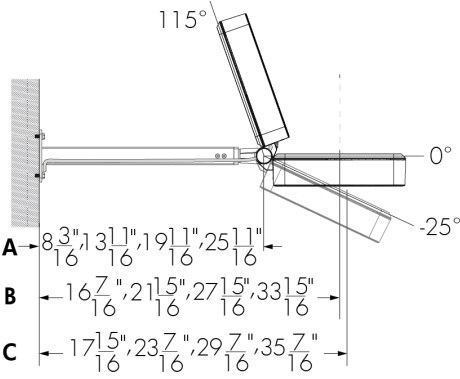


- A - Dimension from wall to pivot.
- B - Dimension from wall to the geometric center of the fixture.
- C - Dimension from wall to the center of the board.

WAM - Wall Mount Bracket With Decorative Cover
6 in, 12 in, 18 in or 24 in



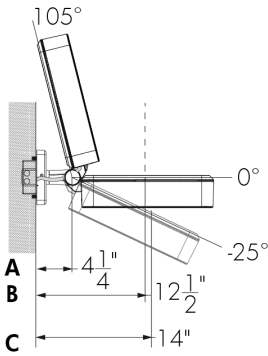
WAMNC - Wall Mount Bracket Without Decorative Cover
Cover 6 in, 12 in, 18 in or 24 in



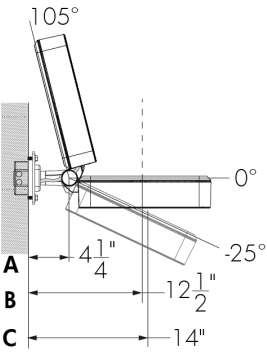
A cable length of 10 ft or greater must be specified for the WAM24 mounting option.

A cable length of 10 ft or greater must be specified for the WAM24 mounting option.

WMRJB - Recessed JBOX Wall Mount With Decorative Cover



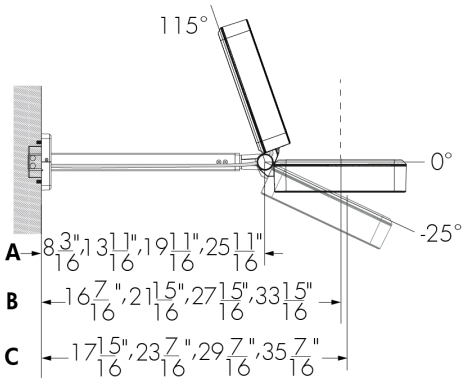
WMRJBNC - Recessed JBOX Wall Mount Without Decorative Cover



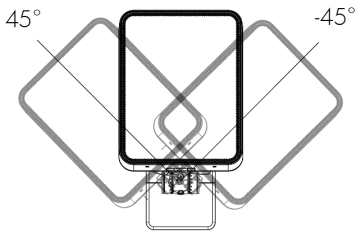
Fixture cable length is determined by Lumenpulse.

Fixture cable length is determined by Lumenpulse.

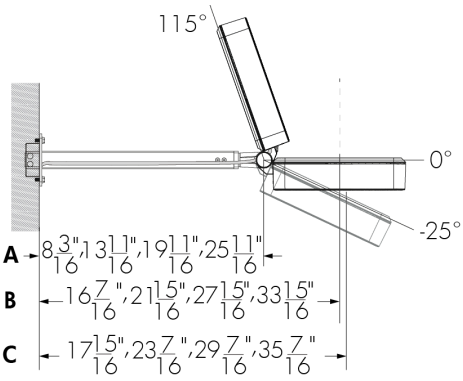
WAMRJB - Recessed JBOX Wall Arm Mount With
Decorative Cover 6 in, 12 in, 18 in or 24 in



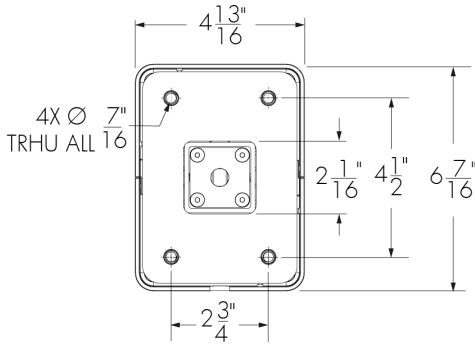
Wall Mount Horizontal Pivot Limits



WAMRJBNC - Recessed JBOX Wall Arm Mount
Without Decorative Cover 6 in, 12 in, 18 in or 24 in



WM, WAM, WMRJB and WAMRJB - Mounting Hole
Pattern

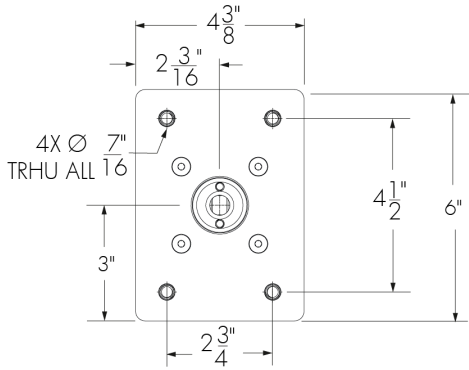


A - Dimension from wall to pivot.

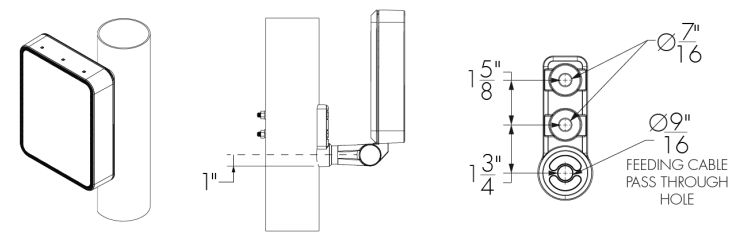
B - Dimension from wall to the geometric center of the fixture.

C - Dimension from wall to the center of the board.

WMNC, WAMNC, WMRJBNC and WAMRJBNC -
Mounting Hole Pattern



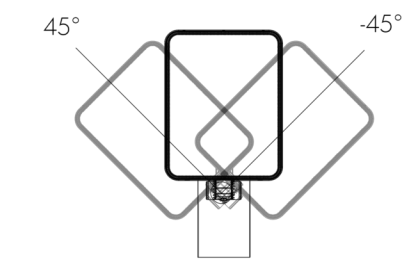
RPM4/1, RPM4.5/1, RPM5/1 - Round Pole Mount



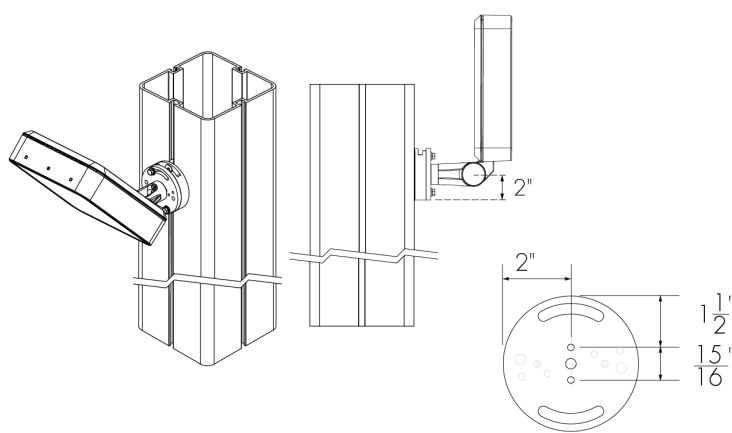
	RPM4/1	RPM4.5/1	RPM5/1
For pole Ø	4" ± 1/16	4.5" ± 1/16	5" ± 1/16
Bolt length	5 1/4	5 3/4	6 1/4

Consult factory for other pole diameters.
Hardware included with accessory.

Round Pole Mount Horizontal Pivot Limits



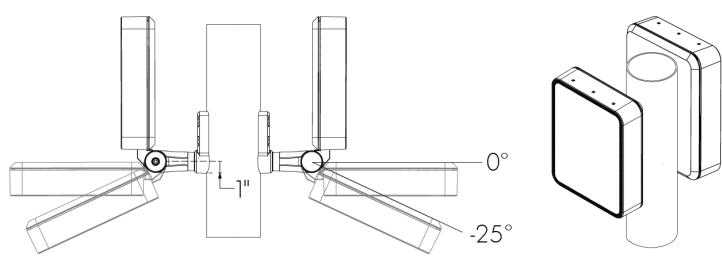
PLTU - Universal Yoke



Refer to the Universal Yoke specification sheet and Pole installation instructions for more details. Square Lumentech profile shown.

All mounting options (except for SM mounting) are interchangeable. Consult factory for details.
All mounting options have a pivot adjustable in 6° increments, consult factory for universal pivot option.

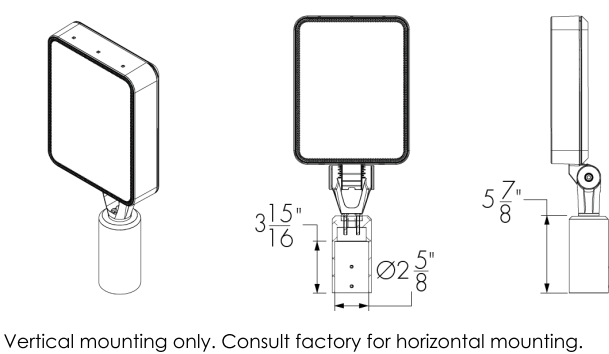
RPM4/2, RPM4.5/2, RPM5/2 - Round Pole Mount For Two Fixtures



	RPM4/2	RPM4.5/2	RPM5/2
For pole Ø	4" ± 1/16	4.5" ± 1/16	5" ± 1/16
Bolt length	5 3/4	6 1/4	7"

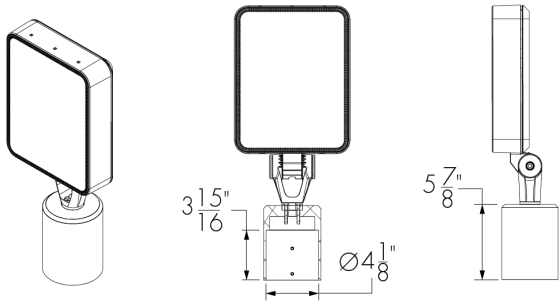
Consult factory for other pole diameters.
Hardware included with accessory.

TN2 - Tenon Adapter For 2 3/8 in O.D. Pole



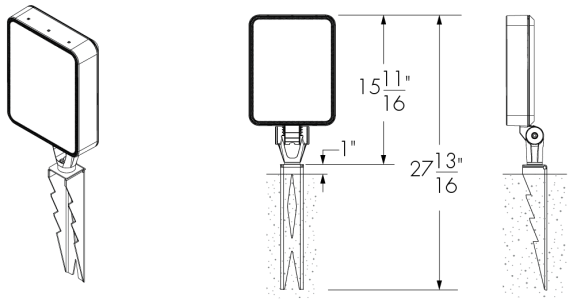
Vertical mounting only. Consult factory for horizontal mounting.

TN4 - Tenon Adapter For 4 in O.D. Pole



Vertical mounting only. Consult factory for horizontal mounting.

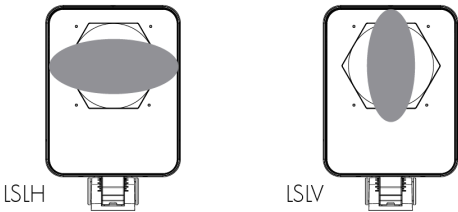
SK - Stake Mount



All mounting options (except for SM mounting) are interchangeable. Consult factory for details.
All mounting options have a pivot adjustable in 6° increments, consult factory for universal pivot option.

Optical Options

- LSLH - Linear Spread Lens Horizontal Distribution
- LSLV - Linear Spread Lens Vertical Distribution



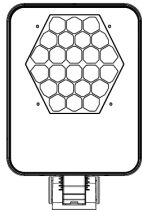
Factory installed, not adjustable on site. Not available for WFL, VWFL, NAS, WW, 2, 2 BLS, 3, 3BLS, 4, 4BLS and 5S optics.

See 'Optical Accessories' section for field adjustable spread lens (LSLA).

	Beam angle with LSLH/LSLV
XN	5° x 60°
VN	7° x 60°
NS	13° x 60°
NF	18° x 65°
M	25° x 66°
FL	35° x 70°

LLF: 0.88*
*LLF may vary slightly by distribution chosen.

HL - Honeycomb Louver



Factory installed, not adjustable on site. HL not available for WFL, VWFL, NAS, WW, 2, 2BLS, 3, 3BLS, 4, 4BLS and 5S optics.

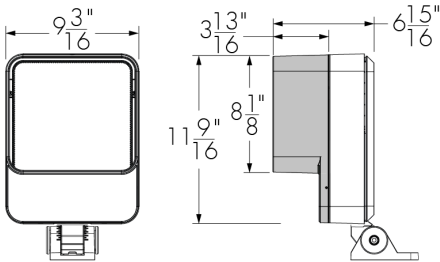
The addition of a honeycomb louver will affect beam distribution. Consult factory for application support.

LLF: 0.90*
*LLF may vary slightly by distribution chosen.

Optical Accessories (Factory Installed, Order Separately)

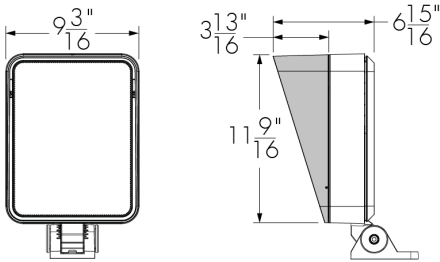
Installed optical accessories will affect the maximum pivot limits for each mounting option, consult factory for details.

SN - Snoot



LQLSN-**FINISH-BK-OPTIONS** (CRC)
Interior surface painted black. Please specify the exterior **FINISH** from the list of finishes in the fixture order code.

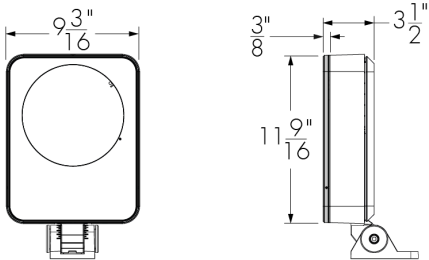
VS - Visor



LQLVS-**FINISH-BK-OPTIONS** (CRC)
Interior surface painted black. Please specify the exterior **FINISH** from the list of finishes in the fixture order code.

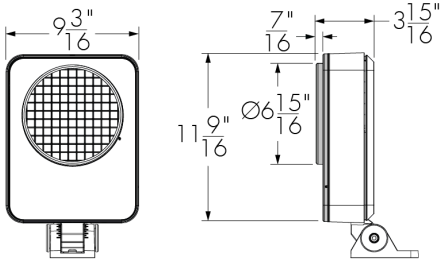
The Visor is not recommended for the WW optic.

LSLA - Linear Spread Lens Adjustable



LQLLSLA-**FINISH-OPTIONS** (CRC)
Please specify the exterior **FINISH** from the list of finishes in the fixture order code.

WG - Wire Guard



LQLWG-**FINISH-OPTIONS** (CRC)
Please specify the exterior **FINISH** from the list of finishes in the fixture order code.

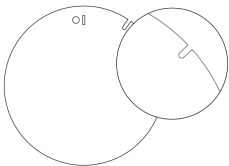
Accessory Combinations

	+	Snoot	Visor	Wire guard
Linear spread lens adjustable		YES	YES	NO
Wire guard		YES	YES	N/A

Accessory combinations must be ordered together on a single line. Ex: A snoot + wire guard combination order code is LQLSNWG-BK-BK. A maximum of two accessories can be combined per fixture.

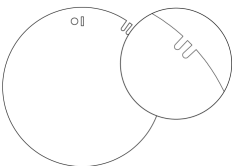
Diffuser Lenses (Intended for Mockup Purposes Only, Order Separately)

Diffuser Lens 1 (1 Notch)



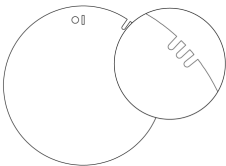
147707

Diffuser Lens 2 (2 Notches)



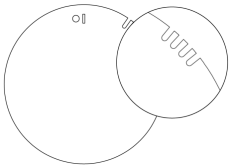
147708

Diffuser Lens 3 (3 Notches)



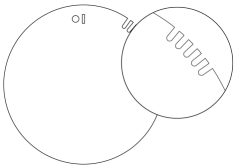
147709

Diffuser Lens 4 (4 Notches)



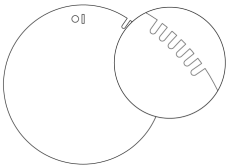
147710

Diffuser Lens 5 (5 Notches)



147711

Diffuser Lens 6 (6 Notches)



147712

Final Distribution Using Diffuser Lenses

	Final Distribution Using Diffuser Lens					
Original Distribution on Fixture	Diffuser Lens 1 1 Notch	Diffuser Lens 2 2 Notches	Diffuser Lens 3 3 Notches	Diffuser Lens 4 4 Notches	Diffuser Lens 5 5 Notches	Diffuser Lens 6 6 Notches
XN (4°/5°)	VN	NS	NF	M	FL	WFL
VN (6°)	NS					
NS (10°)						
NF (20°)						
M (30°)			FL	WFL		
FL (40°)						
WFL (60°)				VWFL		
VWFL (90°)						

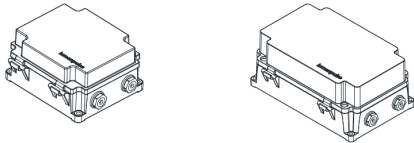
Choose a diffuser lens based on the desired final beam distribution. Refer to the 6-digit part numbers above to order diffuser lenses individually. To order a complete set of 6 diffuser lenses in a bag, refer to the following item names: **LQS**: LQALK-S **LQM**: LQALK-M **LQL**: LQALK-L **LQG**: LQALK-G

The diffuser lenses are intended for mockup purposes only. A lens holder is required to install a diffuser lens on the fixture, order separately using the following names: **LQS**: LQSLSLA-FINISH-LQALK **LQM**: LQMLSLA-FINISH-LQALK **LQL**: LQLLSLA-FINISH-LQALK **LQG**: LQGSLA-FINISH-LQALK

Please specify the exterior **FINISH** from the list of finishes in the fixture order code.
Refer to the Diffuser Lens Installation Instructions on the Lumenpulse website for information on installing the diffuser lenses.

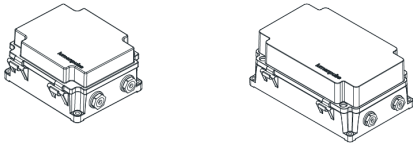
Control Boxes (Order Separately)

CBX-DMX/RDM - DMX/RDM Enabled (Daisy Chain or Star Configuration)



DMX/RDM control box. Up to six power and data outputs to fixtures or fixture runs. Consult CBX specification sheet and installation instructions for details. Lumenterminators provided with CBX (2x for Daisy Chain configuration, 6x for Star configuration), consult factory to order spares.

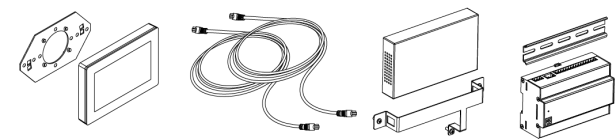
CBX-ENET - Ethernet Enabled (Daisy Chain or Star Configuration)



Ethernet control box. Up to four power and data outputs to fixture or fixture runs. Consult Ethernet CBX specification sheet and installation instructions for details.

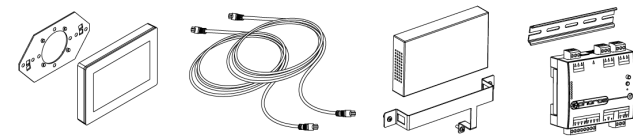
Control Systems (Order Separately)

PHAROS - Pharos® Designer Lighting Control Kit



The Pharos Designer Lighting Control Kit, available for 1 or 2 DMX universes, allows for complete control of large lighting installations.

EXPERT - Pharos® Expert Control Kit



The Pharos Expert Control Kit, available for 1, 2, 4 or 6 DMX universes, allows for complete control of large lighting installations.


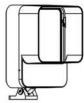

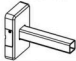
Diagnostic And Addressing Tools (Order Separately)

LID - LumenID



The updated LumenID (LID) is now your all-in-one diagnostic and addressing solution for both DMX/RDM and Lumentalk (LT) systems. Engineered for versatility, it streamlines commissioning and troubleshooting across protocols—no need for multiple tools. Consult the LID specification sheet for full details.

EPA Guide

	FIXTURE			MOUNTING OPTIONS*			
	LQL	LQL with Snoot	LQL with Visor	WAM/WAMRJB			
							
EPA Front (sq ft)	0.841	0.997	0.997	N/A	N/A	N/A	N/A
EPA Side (sq ft)	0.231	0.596	0.596	0.134	0.287	0.440	0.593
EPA Front 45° (sq ft)	0.787	1.256	1.256	N/A	N/A	N/A	N/A

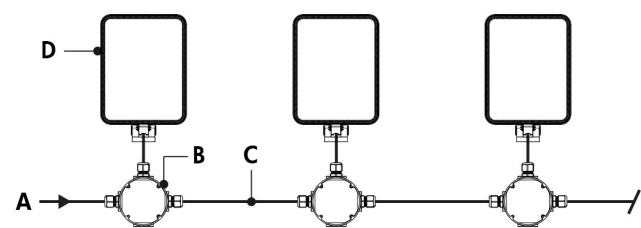
*Mounting arm only. Fixture EPA calculation must also be considered.

Typical Wiring Diagrams

Wiring Color Code

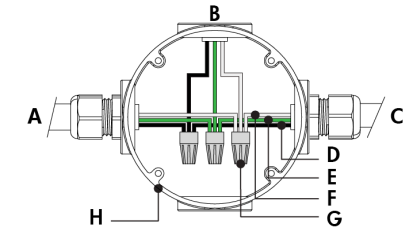
UL Color Code	USE
Green	Ground
Black	Line 100-277V AC
White	Line/Neutral
Red or Purple	0-10V / Data +
Orange	0-10V / Data -
Gray	Signal common (DMX/RDM only)

On/Off Control (NO)



- A - Power input (100-277V, wiring by others)
- B - Junction box (by others)
- C - Power wiring (by others)
- D - Lumenquad Large

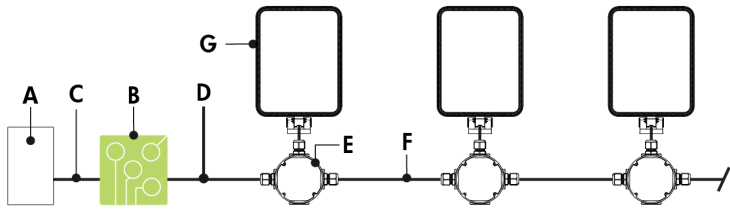
On/Off Control (NO) - Wiring Detail



- A - Power input or from previous fixture
- B - To fixture
- C - To next fixture
- D - Line
- E - Ground
- F - Line/Neutral
- G - Wire-nuts (by others)
- H - Junction box (by others)

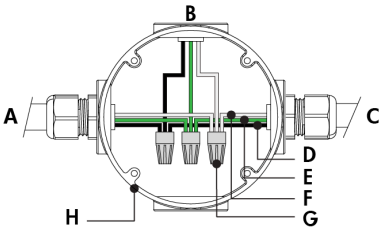
- Consult factory for specific applications and maximum fixture count/cable length recommendations. 50 watts per fixture.

Lumentalk (LT)



- A** - Dimmer/controller (order separately from Lumenpulse, or by others)
- B** - Lumentranslator 2 (LTL2-DIM, -DMX, -TRIAC, -DALI)
- C** - Data wiring (by others)
- D** - Power line (100-277V, wiring by others)
- E** - Junction box (by others)
- F** - Power wiring (by others)
- G** - Lumenquad Large

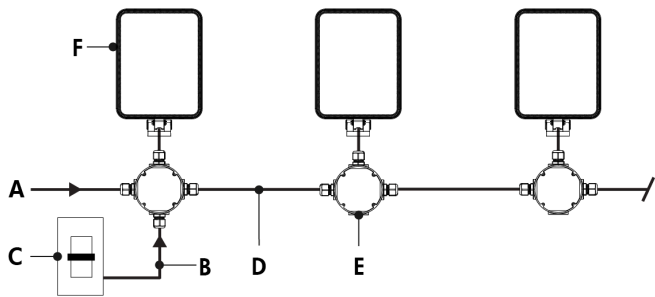
Lumentalk (LT) - Wiring Detail



- A** - Power input (control over power line via Lumentalk system) or from previous fixture
- B** - To fixture
- C** - To next fixture
- D** - Line
- E** - Ground
- F** - Line/Neutral
- G** - Wire-nuts (by others)
- H** - Junction box (by others)

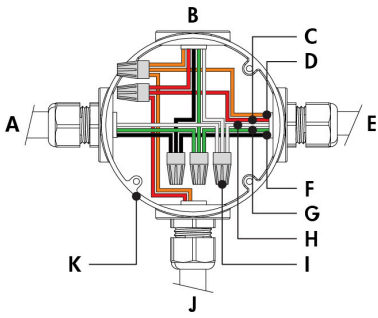
- Consult factory for specific applications and maximum fixture count/cable length recommendations.
- Lumentalk enabled fixtures must be commissioned using LumentalkID software and a LID. Consult factory for details.
- Maximum of 1 transmitter (Lumentranslator or Lumenlink) per system. No third party fixtures allowed on the same circuit.
- For DMX applications: 1 DMX controller per Lumentalk network, maximum of 48 DMX channels per Lumentalk network (minimum step transition update rate is 1 second, minimum fade time between two colors is 1 minute). Consult factory for applications that require additional capabilities.
- Consult factory for DALI Lumentalk applications.
- 1% minimum dimming value. 50 watts per fixture.

0-10V Dimming (DIM)



- A - Power input (100-277V, wiring by others)
- B - Data wiring (by others)
- C - Dimmer (by others)
- D - Power and data wiring (by others)
- E - Junction box (by others)
- F - Lumenquad Large

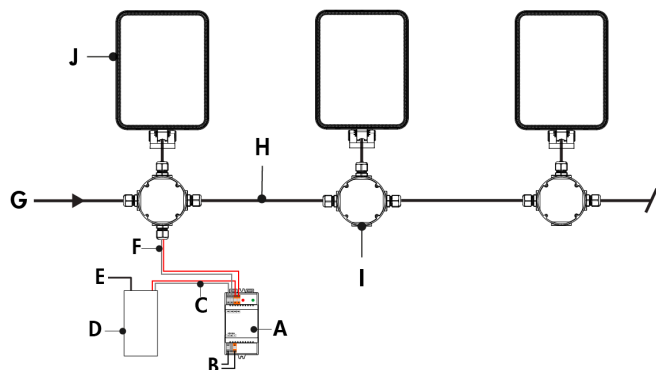
0-10V Dimming (DIM) - Wiring Detail



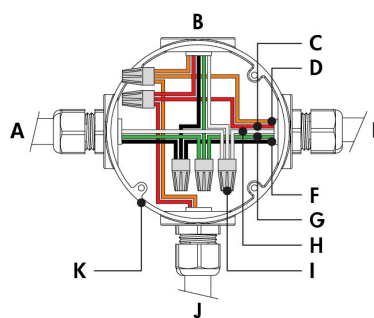
- A - Power input or from previous fixture
- B - To fixture
- C - 0-10 V +
- D - 0-10 V -
- E - To next fixture
- F - Line
- G - Ground
- H - Neutral
- I - Wire-nuts (by others)
- J - From dimmer (by others)
- K - Junction box (by others)

- Consult factory for specific applications and maximum fixture count/cable length recommendations.
- 0-10V mA ratings: passive dimmer (Current Sink): 3mA per fixture, active dimmer (Current Source): 0.5mA per fixture.
- 1% minimum dimming value. 50 watts per fixture.

DAI Dimming (DAI) - Wiring Detail

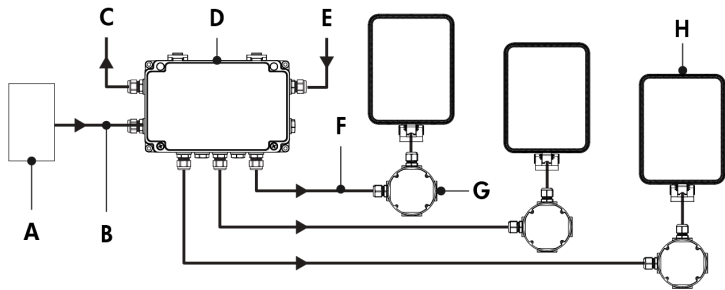


- Consult factory for specific applications and maximum fixture count/cable length recommendations.
- Maximum of 64 DALI fixtures per DALI loop.
- 1% minimum dimming value. 50 watts per fixture.
- Commissioning may be required based on the selection of 3rd party DALI controller. Controller and commissioning provided by others.



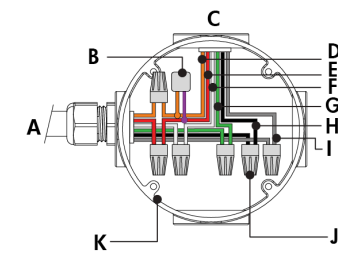
- A** - Power input or from previous fixture
- B** - To fixture
- C** - DA +
- D** - DA -
- E** - To next fixture
- F** - Line
- G** - Ground
- H** - Neutral
- I** - Wire-nuts (by others)
- J** - From DALI controller (by others)
- K** - Junction box (by others)

Star Layout (DMX/RDM)



- A - DMX/RDM controller (order separately from Lumenpulse, or by others)
- B - Data input (Belden 9841 or equivalent, by others)
- C - Data output to next CBX (optional, not isolated/not boosted)
- D - CBX-ST
- E - Power input (100-277V, wiring by others)
- F - Power and data output to fixture (wiring by others)
- G - Junction box (by others)
- H - Lumenquad Large

Star Layout (DMX/RDM) - Wiring Detail



- A - From CBX or previous fixture
- B - Lumenterminator*
- C - To fixture
- D - Data -
- E - Data +
- F - Neutral
- G - Ground
- H - Line
- I - Signal common
- J - Wire-nuts (by others)
- K - Junction box (by others)

Maximum Fixture Count

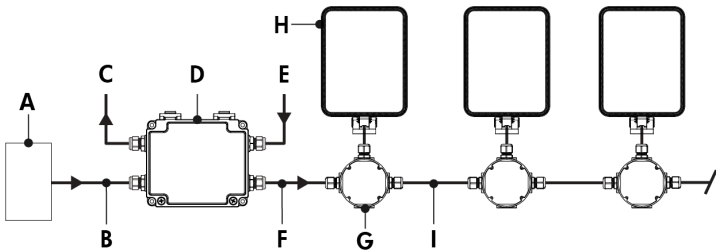
Maximum number of fixtures per run (Based on 15A maximum, 16AWG cable, fixtures spaced 10ft on center, first fixture 50ft from CBX)

Configuration/Voltage	120V	208V	240V	277V
LQL	18	28	32	32

- Refer to CBX installation instructions for additional wiring details.
- Consult factory for specific applications and maximum fixture count/cable length recommendations.
- The DMX/RDM protocol states a maximum of 32 DMX/RDM enabled fixtures on any single run.
- Maximum of 4 DMX/RDM repeaters/CBX cascading in line.
- Maximum of 6 outputs per CBX-ST.
- Each fixture requires 1 DMX address.
- 1% minimum dimming value.
- 50 watts per fixture.

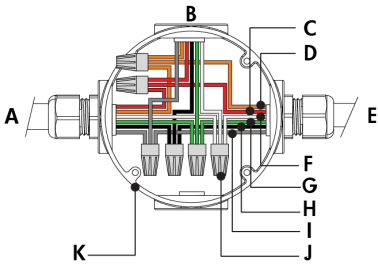
*DMX terminator is required at the end of each run to maintain data integrity. (6x) DMX lumenterminators included per CBX-ST. See installation instructions for details.

Daisy Chain Layout (DMX/RDM)



- A - DMX/RDM controller (order separately from Lumenpulse, or by others)
- B - Data input (Belden 9841 or equivalent, by others)
- C - Data output to next CBX (optional, not isolated/not boosted)
- D - CBX-DS
- E - Power input (100-277V, wiring by others)
- F - Power and data output to fixture (wiring by others)
- G - Junction box (by others)
- H - Lumenquad Large
- I - Power and data wiring (by others)

Daisy Chain Layout (DMX/RDM) - Wiring Detail (First or Middle of Run)



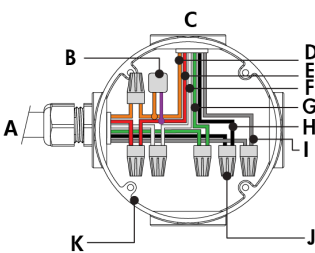
- A - From CBX or previous fixture
- B - To fixture
- C - Data -
- D - Data +
- E - To next fixture
- F - Neutral
- G - Line
- H - Ground
- I - Signal common
- J - Wire-nuts (by others)
- K - Junction box (by others)

Maximum Fixture Count

Maximum number of fixtures per run (Based on 1.5A maximum, 16AWG cable, fixtures spaced 10ft on center, first fixture 50ft from CBX)

Configuration/Voltage	120V	208V	240V	277V
LQL	18	28	32	32

Daisy Chain Layout (DMX/RDM) - Wiring Detail (End of Run)



- A - From CBX or previous fixture
- B - Lumenterminator*
- C - To fixture
- D - Data -
- E - Data +
- F - Neutral
- G - Ground
- H - Line
- I - Signal common
- J - Wire-nuts (by others)
- K - Junction box (by others)

- Refer to CBX installation instructions for additional wiring details.
- Consult factory for specific applications and maximum fixture count/cable length recommendations.
- The DMX/RDM protocol states a maximum of 32 DMX/RDM enabled fixtures on any single run.
- Maximum of 4 DMX/RDM repeaters/CBX cascading in line.
- Maximum of 1 output per CBX-DS.
- Maximum of 3 ft cable length between fixture and next junction box for daisy chain layout.
- Each fixture requires 1 DMX address.
- 1% minimum dimming value. 50 watts per fixture.

* DMX terminator is required at the end of each run to maintain data integrity. (2x) DMX lumenterminators included per CBX-DS. See installation instructions for details.

How to Order

Housing	Voltage	Color and Color Temperature ⁽²⁾	Optic	Optical Option ⁽⁸⁾	Mounting Options ^{(10) (11)}
LQL Lumenquad Large ⁽¹⁾	100 100 Volts	22K 2200K	XN Extra Narrow 3° ⁽⁴⁾	LSLH Linear Spread Lens Horizontal Distribution ⁽⁹⁾ LSLV Linear Spread Lens Vertical Distribution ⁽⁹⁾ HL Honeycomb Louver ⁽⁹⁾	SM Surface Mount
	120 120 Volts	27K 2700K	VN Very Narrow 6° ⁽⁴⁾		WM Wall Mount Bracket with Decorative Cover
	208 208 Volts	30K 3000K	NS Narrow Spot 10° ⁽⁴⁾		WMNC Wall Mount Bracket without Decorative Cover
	220 220 Volts	35K 3500K	NF Narrow Flood 20° ⁽⁴⁾		WAM6 Wall Arm Mount 6 in with Decorative Cover
	240 240 Volts	40K 4000K	M Medium 30° ⁽⁴⁾		WAM6NC Wall Arm Mount 6 in without Decorative Cover
	277 277 Volts	57K 5700K	FL Flood 40° ⁽⁴⁾		WAM12 Wall Arm Mount 12 in with Decorative Cover
		RD Red ^{(3) (4) (5)}	WFL Wide Flood 60° ⁽⁴⁾		WAM12NC Wall Arm Mount 12 in without Decorative Cover
		GR Green ^{(3) (4) (5)}	VWFL Very Wide Flood 90° ^{(4) (7)}		WAM18 Wall Arm Mount 18 in with Decorative Cover
		BL Blue ^{(3) (4) (5)}	NAS Narrow Asymmetric ⁽⁴⁾		WAM18NC Wall Arm Mount 18 in without Decorative Cover
			WW Asymmetric Wallwash ⁽⁴⁾		WAM24 Wall Arm Mount 24 in with Decorative Cover ⁽¹²⁾
			2 Type II ⁽⁴⁾		WAM24NC Wall Arm Mount 24 in without Decorative Cover ⁽¹²⁾
			2BLS Type II backlight shield ⁽⁴⁾		WMRJB Recessed JBOX Wall Mount with Decorative Cover
			3 Type III ⁽⁴⁾		WMRJBNC Recessed JBOX Wall Mount without Decorative Cover
			3BLS Type III backlight shield ⁽⁴⁾		WAMRJB6 Recessed JBOX Wall Arm Mount 6 in with Decorative Cover
			4 Type IV ⁽⁴⁾		WAMRJB6NC Recessed JBOX Wall Arm Mount 6 in without Decorative Cover
			4BLS Type IV backlight shield ⁽⁴⁾		WAMRJB12 Recessed JBOX Wall Arm Mount 12 in with Decorative Cover
			5S Type VS ⁽⁴⁾		WAMRJB12NC Recessed JBOX Wall Arm Mount 12 in without Decorative Cover
					WAMRJB18 Recessed JBOX Wall Arm Mount 18 in with Decorative Cover
					WAMRJB18NC Recessed JBOX Wall Arm Mount 18 in without Decorative Cover
					WAMRJB24 Recessed JBOX Wall Arm Mount 24 in with Decorative Cover
					WAMRJB24NC Recessed JBOX Wall Arm Mount 24 in without Decorative Cover
					RPM4/1 Round Pole Mount 4 in
					RPM4.5/1 Round Pole Mount 4.5 in
					RPM5/1 Round Pole Mount 5 in
					RPM4/2 Round Pole Mount 4 in for two fixtures
					RPM4.5/2 Round Pole Mount 4.5 in for two fixtures
					RPM5/2 Round Pole Mount 5 in for two fixtures

					<div>PLTU Lumentech Pole Mount ⁽¹³⁾</div> <div>TN2 Tenon Adapter for 2 3/8 in O.D. Pole</div> <div>TN4 Tenon Adapter for 4 in O.D. Pole</div> <div>SK Stake Mount</div>
--	--	--	--	--	--

Notes:

1. Consult factory for products that are BAA-approved (Buy American Act).

2. Consult factory for availability of static Royal Blue, 6500K and 90+ CRI.

3. Not available for XN optic.

4. Static colors made to order 8-10 weeks.

5. Consult factory for availability with type 2, 2BLS, 3, 3BLS, 4, 4BLS and 5S distributions.

6. Factory installed, not interchangeable on site.

7. Consult factory for photometric performance.

8. Optical options are factory installed and cannot be changed in the field.
9. Not available for WFL, VWFL, NAS, WW, 2, 2BLS, 3, 3BLS, 4, 4BLS and 5S optics.

10. All mounting options (except for SM mounting) are interchangeable. Consult factory for details.

11. All mounting options have a pivot adjustable in 6° increments, consult factory for universal pivot option.

12. A cable length of 10 ft or greater must be specified.

13. Available for Lumentech poles with a square or round profile. A PLTU - Universal Yoke accessory must be ordered with the Lumentech pole for the Lumentech to fit with the PLTU mounting option. Refer to Lumentech specification sheet and installation instructions for more details.

How to Order

Finish	Control	Option	Certification	Cable Length ⁽¹⁹⁾ ⁽²³⁾ ⁽²⁵⁾
BK Black Sandtex®	NO On/Off Control	CRC Corrosion-Resistant Coating ⁽²⁰⁾ ⁽²¹⁾	UL UL Compliant	3FT 3 ft ⁽¹⁹⁾ ⁽²⁴⁾
BRZ Bronze Sandtex®	LT Lumentalk ⁽¹⁷⁾		CE CE Compliant ⁽²²⁾	10FT 10 ft
SI Silver Sandtex®	DIM 0-10V Dimming		CEII CE Compliant Class II Double Insulated ⁽²²⁾	20FT 20 ft
WH Smooth White	DALI DALI Dimming			30FT 30 ft
BKTX Textured Black	DMX/RDM DMX/RDM Enabled ⁽¹⁸⁾ ⁽¹⁹⁾			50FT 50 ft
BRZTX Textured Bronze Non-Metallic				70FT 70 ft
GRATX Textured Medium Gray				100FT 100 ft
GRNTX Textured Green				
WHTX Textured White				
CC Custom Color & Finish ⁽¹⁴⁾ ⁽¹⁵⁾ ⁽¹⁶⁾				

Notes:

- 14.** Lumenpulse offers a wide selection of RAL CLASSIC (K7) colors with a smooth texture and high-gloss finish. Please consult factory for a list of available K7 colors, other RAL textures and glosses, or to match alternate color charts. Final color matching results may vary.

15. Setup charges apply for RAL colors. Consult factory for details.

16. Longer lead times can be expected for custom RAL color finishes.

17. A Lumentranslator 2 (LTL2) and LumenID (LID) must be specified for Lumentalk applications. Consult Lumentranslator 2 and Lumentalk pages and specification sheets for details.

18. A control box (CBX) and LumenID (LID) must be specified.

19. Maximum of 3 ft cable length for daisy chain DMX applications with CBX-DS.
- 20.** Use only when exposed to salt spray. This option is not required for normal outdoor exposure.

21. Setup charges apply. Consult factory for details.

22. Consult European specification sheets and installation instructions for CE and CE Class II wiring information.

23. Not applicable to WMRJB, WMRJBNC and WAMRJB 6 in to 24 in mounting options (with or without decorative cover). Cable lengths for these mounting options are determined by the length of the mounting bracket.

24. Not available with WAM24 or WAM24NC mounting options.

25. UL fixtures specified with a Smooth white finish and a SM, WM, WMNC, or WAM 6 in to 24 in mounting option (with or without decorative cover) are provided with a white cable. A black cable is provided for all other fixture configurations.