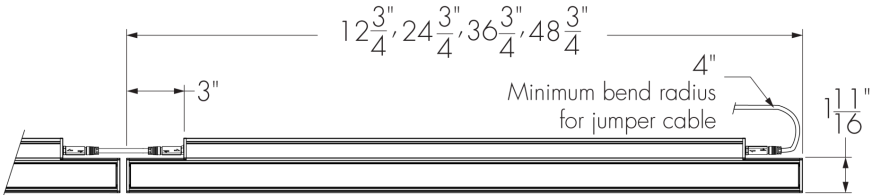


Project Name _____

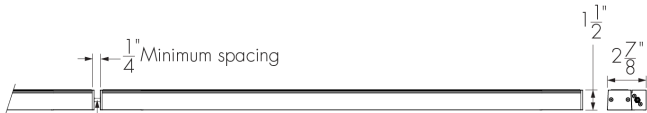
Qty _____

Type _____

Catalog / Part Number _____



Top view



Jumper cable (LOGNJC)

Front and side views

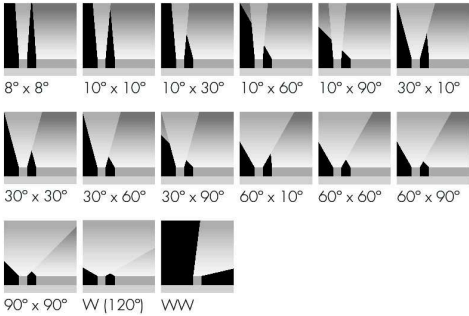
Photometric Summary (8 W/ft)

	Delivered output (lm)	Intensity (peak cd)
8°x8°	1,538	41,559
10°x10°	1,487	32,423
10°x30°	1,442	9,172
10°x60°	1,434	4,891
10°x90°	1,437	2,564
30°x10°	1,446	9,143
30°x30°	1,558	3,598
30°x60°	1,511	2,276
30°x90°	1,522	1,645
60°x10°	1,433	4,981
60°x60°	1,526	1,128
60°x90°	1,516	1,358
90°x90°	1,491	922
W (120°)	867	426
WW	1,532	7,430

1. Based on RGBW40K full output, 4 ft, UCTL control configuration.

2. Photometric performance is measured in compliance with IESNA LM-79-24.

Optics



Description

The Lumenfacade Nano Horizontal Colour Changing is a high-efficiency linear LED luminaire with a slim profile that makes it easy to conceal and integrate into architectural facades. Available in 12 in, 24 in, 36 in or 48 in sections, the Lumenfacade Nano Horizontal Colour Changing can be configured with a wide number of options, including: optics for grazing, floodlighting, or wall washing; RGB, RGBW, or RGBA colour mixing; various mounting options, finishes, and controls; as well as Legacy or Custom output modes.

Features

Color and Color Temperature	RGB, RGB + White 3000K, RGB + White 4000K, RGB + Amber
Optics	8° x 8°, 10° x 10°, 10° x 30°, 10° x 60°, 10° x 90°, 30° x 10°, 30° x 30°, 30° x 60°, 30° x 90°, 60° x 10°, 60° x 60°, 60° x 90°, 90° x 90°, Wide 120°, Asymmetric Wallwash
Option	Corrosion-Resistant Coating for Hostile Environments 3G ANSI C136.31-2010 Vibration Rating for Bridge Applications
Power Consumption	4 W/ft, 8 W/ft
Warranty	5-year limited warranty

Colors and Color Temperatures



Controls

UCTL

Ratings

IP66 IK08

Certifications



Performance

Maximum Delivered Output

895 lm (48 in fixture, RGB 4 W/ft, full output, 8° x 8°, UCTL control)
1,408 lm (48 in fixture, RGB 8 W/ft, full output, 8° x 8°, UCTL control)
986 lm (48 in fixture, RGBW30K 4 W/ft, full output, 8° x 8°, UCTL control)
1,507 lm (48 in fixture, RGBW30K 8 W/ft, full output, 8° x 8°, UCTL control)
1,006 lm (48 in fixture, RGBW40K 4 W/ft, full output, 8° x 8°, UCTL control)
1,538 lm (48 in fixture, RGBW40K 8 W/ft, full output, 8° x 8°, UCTL control)
878 lm (48 in fixture, RGBA 4 W/ft, full output, 8° x 8°, UCTL control)
1,339 lm (48 in fixture, RGBA 8 W/ft, full output, 8° x 8°, UCTL control)

Maximum Delivered Intensity

24,186 cd at nadir (48 in fixture, RGB 4 W/ft, full output , 8°x8°, UCTL control)
38,044 cd at nadir (48 in fixture, RGB 8 W/ft, full output , 8°x8°, UCTL control)
26,643 cd at nadir (48 in fixture, RGBW30K 4 W/ft, full output , 8°x8°, UCTL control)
40,732 cd at nadir (48 in fixture, RGBW30K 8 W/ft, full output , 8°x8°, UCTL control)
27,187 cd at nadir (48 in fixture, RGBW40K 4 W/ft, full output , 8°x8°, UCTL control)
41,559 cd at nadir (48 in fixture, RGBW40K 8 W/ft, full output , 8°x8°, UCTL)
23,722 cd at nadir (48 in fixture, RGBA 4 W/ft, full output, 8°x8°, UCTL control)
36,183 cd at nadir (48 in fixture, RGBA 8 W/ft, full output , 8°x8°, UCTL control)

Illuminance at Distance

Minimum 1 fc at 156 ft (48 in fixture, RGB 4 W/ft, full output, 8°x8°, UCTL control)
Minimum 1 fc at 195 ft (48 in fixture, RGB 8 W/ft, full output, 8°x8°, UCTL control)
Minimum 1 fc at 163 ft (48 in fixture, RGBW30K 4 W/ft, full output, 8°x8°, UCTL control)
Minimum 1 fc at 202 ft (48 in fixture, RGBW30K 8 W/ft, full output, 8°x8°, UCTL control)
Minimum 1 fc at 165 ft (48 in fixture, RGBW40K 4 W/ft, full output, 8°x8°, UCTL control)
Minimum 1 fc at 204 ft (48 in fixture, RGBW40K 8 W/ft, full output, 8°x8°, UCTL control)
Minimum 1 fc at 154 ft (48 in fixture, RGBA 4 W/ft, full output, 8°x8°, UCTL control)
Minimum 1 fc at 190 ft (48 in fixture, RGBA 8 W/ft, full output, 8°x8°, UCTL control)

Lumen Maintenance

L70 >90,000 hrs

Physical

Housing Material

Low copper content extruded aluminum

Lens Material

Clear tempered glass

Hardware Material	Stainless steel
End Cap Material	Machined aluminum
Gasket Material	Silicone
Surface Finish	Electrostatically applied polyester powder coat
Weight	1.5 lbs (12 in) 3.2 lbs (24 in) 4.8 lbs (36 in) 6.5 lbs (48 in)

Electrical and Control

Voltage	48 VDC
Resolution (DMX/RDM)	Per foot or per fixture (configured with LumenID V3 software), 8-bit or 16-bit, 3 channels (RGB) or 4 channels (RGBW30K, RGBW40K and RGBA)
RGB Color Mixing	12 LEDs per 12 in (4x Red, 4x Green, 4x Blue)
RGBW30K Color Mixing	12 LEDs per 12 in (3x Red, 3x Green, 3x Blue, 3x White 3000K)
RGBW40K Color Mixing	12 LEDs per 12 in (3x Red, 3x Green, 3x Blue, 3x White 4000K)
RGBA Color Mixing	12 LEDs per 12 in (3x Red, 3x Green, 3x Blue, 3x Amber)
Control	Universal control (compatible with DMX/RDM or DALI-2 Type 8 systems)

Environmental

Storage Temperature	-40 °F to 185 °F (device must reach start-up temperature value before operating)
Start-up Temperature	-13 °F to 122 °F
Operating Temperature	-40 °F to 122 °F
Ingress Protection Rating	IP66
Impact Resistance Rating	IK08 (IK09 for 48 in fixtures)
Application Wind Speed	Luminaires were designed based on AASHTO 2013 standard to ensure highest quality and safety. Installation should be validated by a local project engineer to ensure the luminaires are suitable for the wind speed and exposure of the specific application

Accessories (Order Separately)

Cables	Lumenfacade Nano Jumper Cable (LOGNJC), Trunk Power Cable (TKPWR), Trunk Data Cable (TKDMX), Lumenfacade Nano Jumper Cable Joiner (LOGNJC-JOINER)
Control Boxes	Low-Voltage Control Box (LCBX), Low-Voltage Splitter Box (LSBX)
Remote Power Supply	Large Power Supply (LGPSU)
Optical Accessories	Lumenfacade Nano Visor (LOGNVS)
Control Systems	Pharos® Lighting Control Kit (PHAROS), Pharos® Expert Control Kit (EXPERT)
Diagnostic and Addressing Tools	LumenID (LID)

Important

Virtual Patent Marking Notice

This website (<https://www.lmpg.com/patents-trademarks>) is provided to satisfy the virtual patent marking provisions of applicable jurisdictions. Some products listed may be covered by additional patents not referenced here.

Photometric Information

4 W/ft (RGBW40K)

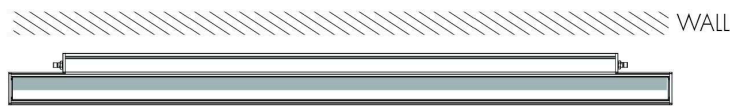
	Delivered output (lm)	Intensity (peak cd)
8°x8°	863	23,323
10°x10°	835	18,196
10°x30°	809	5,147
10°x60°	805	2,745
10°x90°	807	1,439
30°x10°	812	5,131
30°x30°	875	2,021
30°x60°	849	1,279
30°x90°	855	924
60°x10°	804	3,185
60°x60°	857	634
60°x90°	852	763
90°x90°	837	518
W (120°)	487	239
WW	860	4,170

Based on RGBW40K full output, 4 ft, UCTL control configuration.

Photometric performance is measured in compliance with IESNA LM 79-08.

Optical Option Installation Details

HFR - Half-Frosted Lens



Top view



Front view

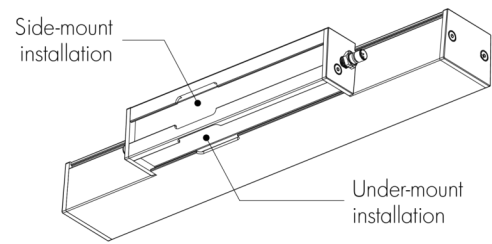
- Always position frosted side toward the wall.
- Applicable for 8° x 8°, 10° x 10° or asymmetric wallwash optics only.

WW - Asymmetric Wallwash

Recommended setback from wall is 1/10 of the wall height.

Example: 2 ft setback for a 20 ft wall.

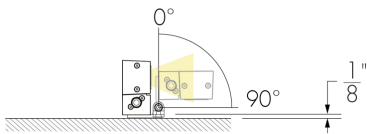
Mounting Points



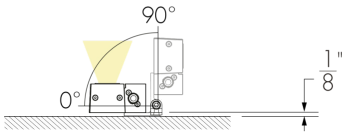
Mounting Options

One mounting bracket provided for 12 in fixtures. Two mounting brackets provided for 24 in, 36 in and 48 in fixtures. See installation instructions for details.

SAMNH - Slim Adjustable Mounting Nano Horizontal



Side-mount installation

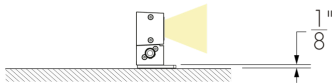


Under-mount installation

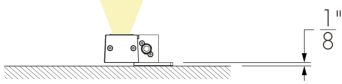
Not suitable when fixture is exposed to wind.

One mounting bracket provided for 12 in fixtures. Two mounting brackets provided for 24 in, 36 in and 48 in fixtures. See installation instructions for details.

UMPNH - Fixed Mounting Nano Horizontal

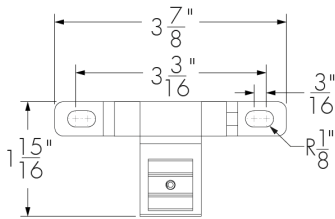


Side-mount installation

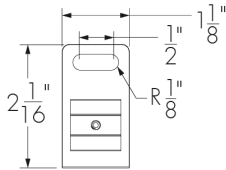


Under-mount installation

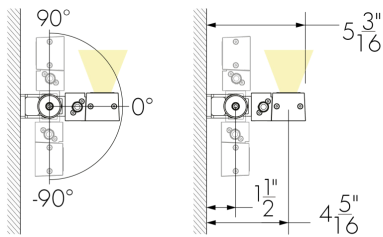
SAMNH - Mounting Hole Pattern



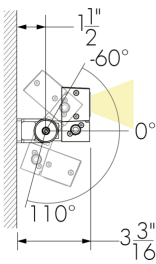
UMPNH - Mounting Hole Pattern



UMASNH - Universal Adjustable Mounting Nano

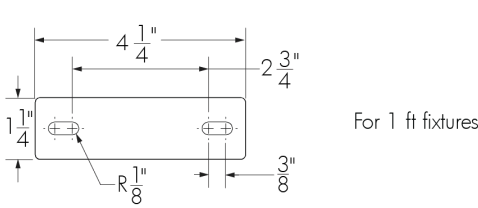


Side-mount installation

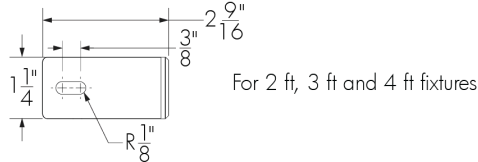


Under-mount installation

UMASNH - Mounting Hole Pattern

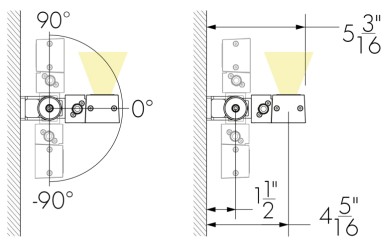


For 1 ft fixtures

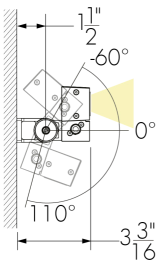


For 2 ft, 3 ft and 4 ft fixtures

WAMNH2 - Adjustable Extended Arm Mounting
Nano Horizontal 2 in

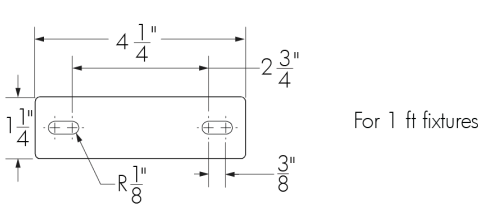


Side-mount installation

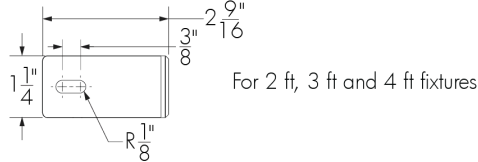


Under-mount installation

WAMNH2 - Mounting Hole Pattern

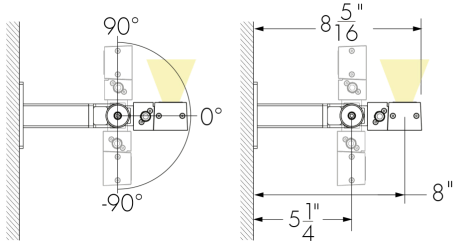


For 1 ft fixtures

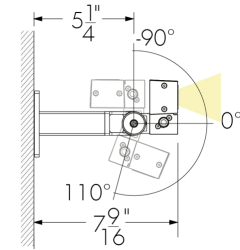


For 2 ft, 3 ft and 4 ft fixtures

WAMNH6 - Adjustable Extended Arm Mounting
Nano Horizontal 6 in

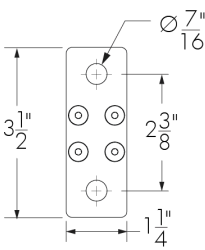


Side-mount installation

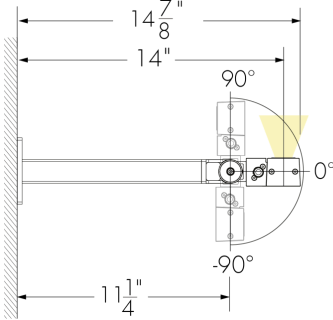


Under-mount installation

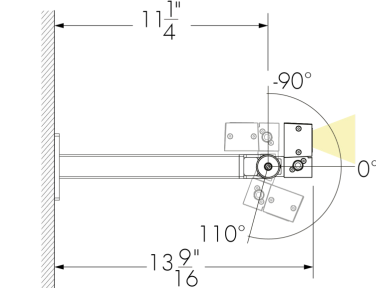
WAMNH6 - Mounting Hole Pattern



WAMNH12 - Adjustable Extended Arm Mounting
Nano Horizontal 12 in

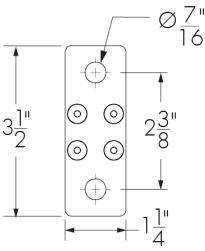


Side-mount installation

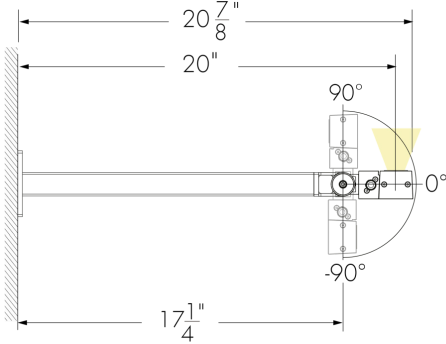


Under-mount installation

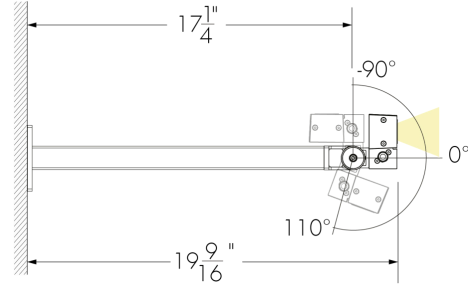
WAMNH12 - Mounting Hole Pattern



WAMNH18 - Adjustable Extended Arm Mounting
Nano Horizontal 18 in

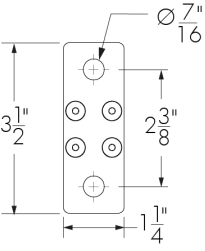


Side-mount installation

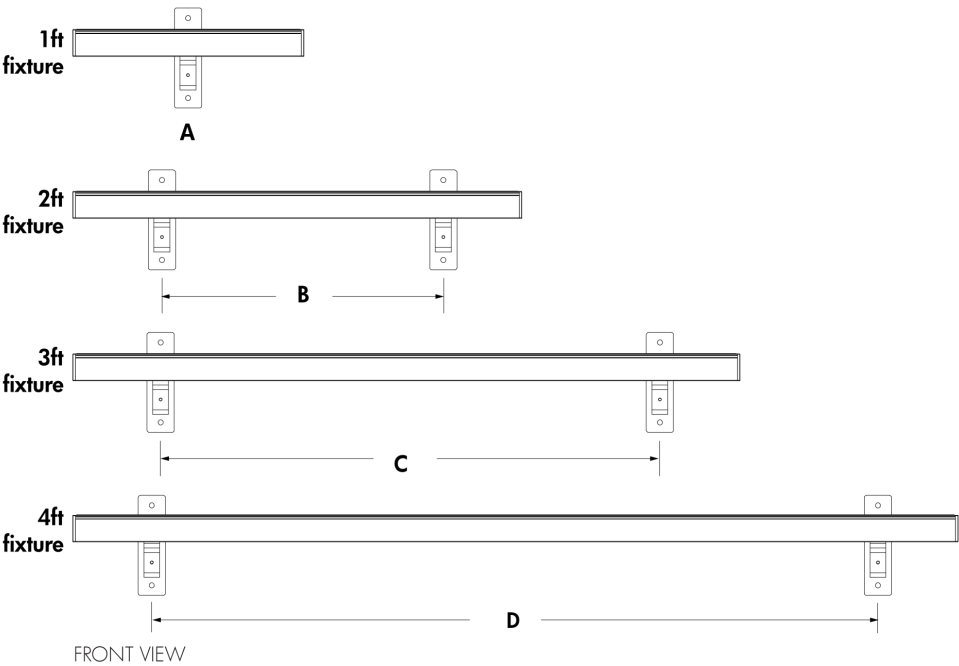


Under-mount installation

WAMNH18 - Mounting Hole pattern



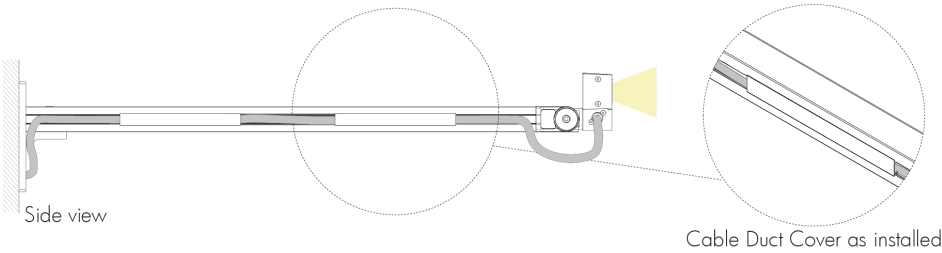
Mounting Bracket Placement (Minimum and Maximum Distances)



- A - Bracket in the center of the fixture
 - B - Minimum 14 in to maximum 16 in
 - C - Minimum 26 in to maximum 28 in
 - D - Minimum 38 1/2 in to maximum 40 1/2 in
- LOGNH with bracket WAMNH28 shown

The mounting bracket(s) to be centered on fixture and as symmetrical as possible. Distances must be respected for all installations.

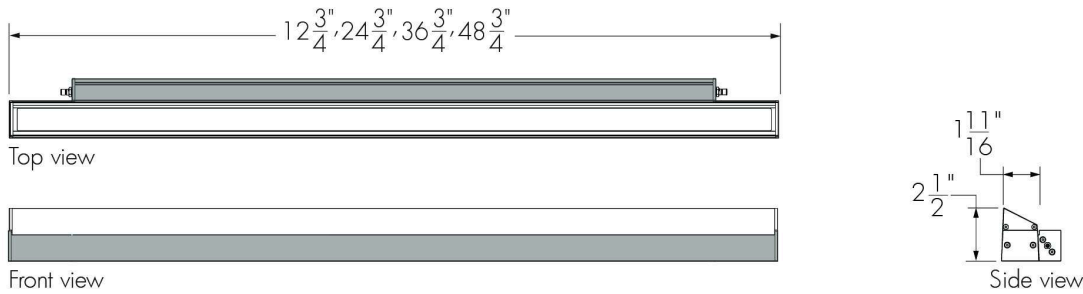
Cable Management System for Wall Mounting Brackets



- No Cable Duct Cover provided for WAMNH2 and WAMNH6 mounting arms.
- 1 Cable Duct Cover provided for WAMNH12 mounting arm.
- 2 Cable Duct Covers provided for WAMNH18 and WAMNH28 mounting arms.

Optical Accessories (Order Separately)

LOGNVS - Visor For Lumenfacade Nano



LOGNVS-LENGTH-FINISH-OPTIONS

- Please specify:
- LENGTH:** 12 in, 24 in, 36 in or 48 in; **FINISH:** BK - Black Sandtex®, BRZ - Bronze Sandtex®, SI - Silver Sandtex®, WH - Smooth white or CC - custom color and finish (please specify RAL color); **OPTIONS:** CRC - Corrosion-resistant coating for hostile environments
- The addition of a visor will affect beam distribution. Consult factory for application support.
 - Not suitable for wide 120° optic.
 - Maximum one accessory per fixture. Visors are field installable.

Cables (Order Separately)

LOGNJC - Jumper Cable For Lumenfacade Nano

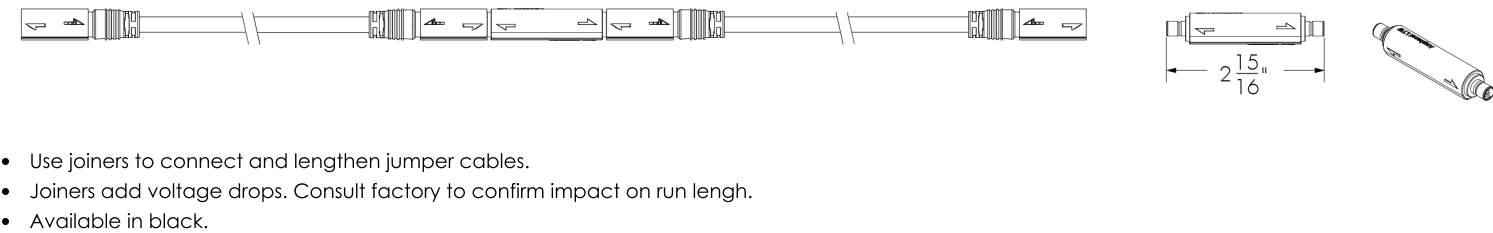


LOGNJC-CERTIFICATION-LENGTH-CABLE COLOR

- Please specify:
- CERTIFICATION:** UL or CE; **LENGTH:** 1 ft to 30 ft (available in 1 ft increments) or 50 ft; **CABLE COLOR:** black or white (connectors are the same color as the specified cable color).
- Suitable for dimming/data and non-dimming applications.
 - Consult Lumenfacade Nano jumper cable specification sheet for all available cable lengths and additional information.

Joiner (Order Separately)

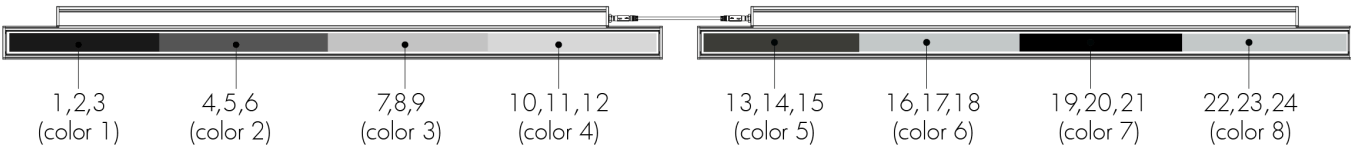
LOGNJC-JOINER - Joiner For Lumenfacade Nano Jumper Cable



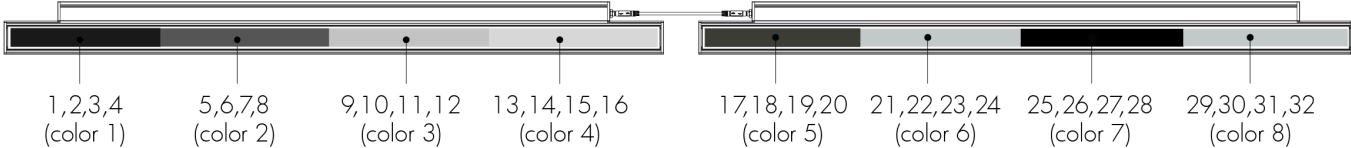
Resolution Details

DMX/RDM Control, Resolution Per Foot: Each 12 in Section is Addressed Independently

DMX Addresses:



UCTL control option, RGB color mixing option.



UCTL control option, RGBW30K, RGBW40K and RGBA color mixing options.

DMX/RDM Control, Resolution Per Fixture: Each Fixture is Addressed Independently

DMX Addresses:



UCTL control option, RGB color mixing option.



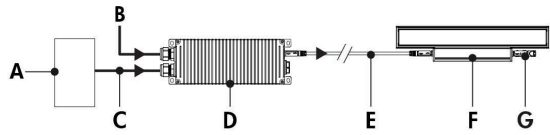
UCTL control option, RGBW30K, RGBW40K and RGBA color mixing options.

- 48 in fixtures shown.
- Fixture resolution can be configured on-site within the LumenID V3 software. A DMX/RDM enabled LCBX or DMX/RDM LSBX is required for DMX/RDM control.

Typical Wiring Diagrams

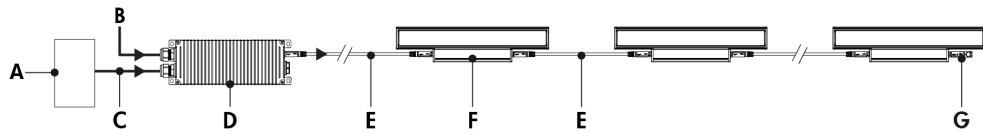
UCTL - Universal Control

Single Unit - LCBX 60W



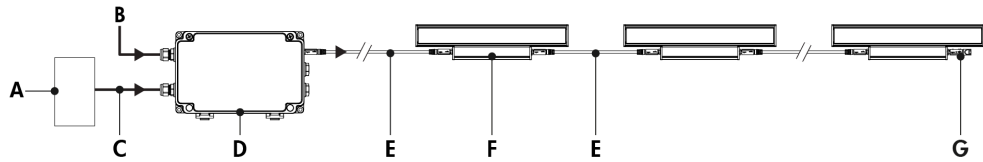
- A - Controller (order separately from Lumenpulse, or by others)
- B - Power input (120-277V, wiring by others)
- C - Data input (wiring by others)
- D - LCBX (60W)
- E - Jumper cable (LOGNJC)
- F - Lumenfacade Nano Horizontal
- G - Terminator cap

Continuous Run - LCBX 60W or 120W



- A - Controller (order separately from Lumenpulse, or by others)
- B - Power input (120-277V, wiring by others)
- C - Data input (wiring by others)
- D - LCBX (60W or 120W)
- E - Jumper cable (LOGNJC)
- F - Lumenfacade Nano Horizontal
- G - Terminator cap

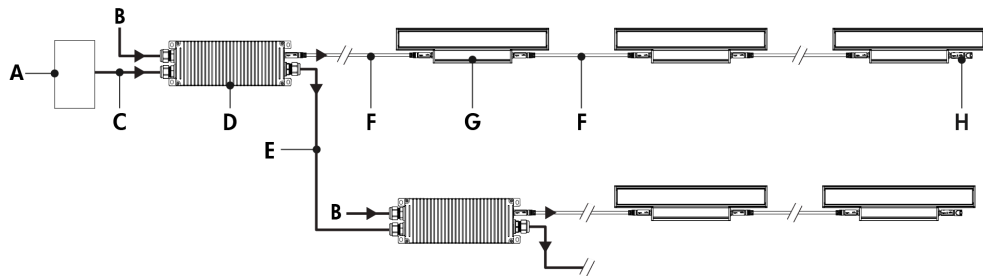
Continuous Run - LCBX 200W



- A - Controller (order separately from Lumenpulse, or by others)
- B - Power input (120-277V, wiring by others)
- C - Data input (wiring by others)
- D - LCBX (200W)
- E - Jumper cable (LOGNJC)
- F - Lumenfacade Nano Horizontal
- G - Terminator cap

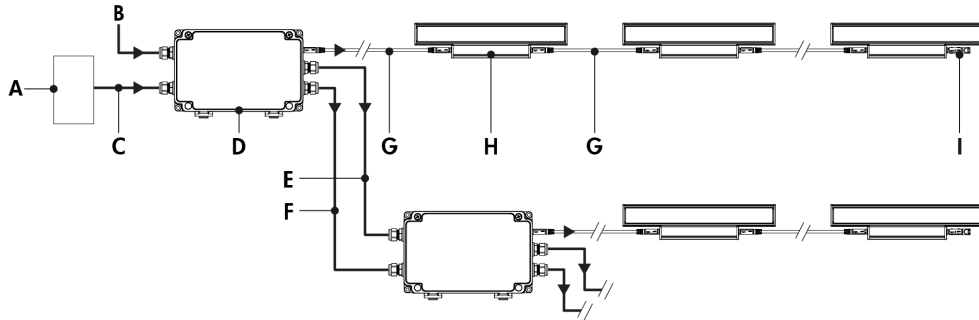
Continuous Run - Daisy Chain

LCBX 60W or 120W



- A - Controller (order separately from Lumenpulse, or by others)
- B - Power input (120-277V, wiring by others)
- C - Data input (wiring by others)
- D - LCBX (60W or 120W)
- E - Data output to next LCBX (wiring by others)
- F - Jumper cable (LOGNJC)
- G - Lumenfacade Nano Horizontal
- H - Terminator cap

Continuous Run - Daisy Chain
LCBX 200W



- A** - Controller (order separately from Lumenpulse, or by others)
- B** - Power input (120-277V, wiring by others)
- C** - Data input (wiring by others)
- D** - LCBX (200W)
- E** - Power output to next LCBX (120-277V, wiring by others)
- F** - Data output to next LCBX (wiring by others)
- G** - Jumper cable (LOGNJC)
- H** - Lumenfacade Nano Horizontal
- I** - Terminator cap

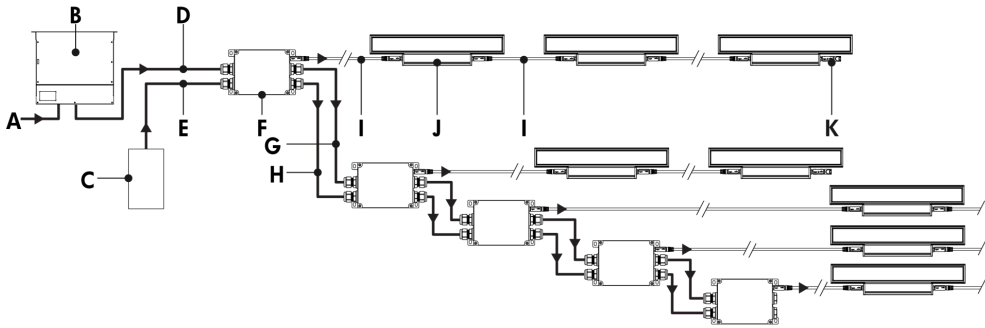
Maximum Run of Fixtures - Lumenfacade Nano® LOGNH Color Changing

10ft Jumper Cable		
Wattage	4W/ft	8W/ft
Maximum Run of Fixtures per LCBX 60W	13ft	6ft
Maximum Run of Fixtures per LCBX 120W	25ft	13ft
Maximum Run of Fixtures per LCBX 200W	45ft*	22ft
25ft Jumper Cable		
Wattage	4W/ft	8W/ft
Maximum Run of Fixtures per LCBX 60W	13ft	6ft
Maximum Run of Fixtures per LCBX 120W	25ft	13ft
Maximum Run of Fixtures per LCBX 200W	45ft*	22ft
50ft Jumper Cable		
Wattage	4W/ft	8W/ft
Maximum Run of Fixtures per LCBX 60W	13ft	6ft
Maximum Run of Fixtures per LCBX 120W	25ft	13ft
Maximum Run of Fixtures per LCBX 200W	45ft*	22ft

*Example: 4W/ft = 45ft maximum run of end to end fixtures per 1CBX 200W.
(11 fixtures maximum for 4ft LOGNH 4W/ft, 45 fixtures maximum for 1ft LOGNH 4W/ft).
Consult factory for system validation prior to quoting and ordering.

- Consult factory for specific applications and maximum fixture count/run length recommendations.
- Maximum of 1 output to fixture, or fixture run, per LCBX.
- Consult the LCBX specification sheet for more information.
- RGB color mixture option requires 3 DMX channels. RGBW30K and RGBW40K color mixture options require 4 DMX channels. RGBA color mixture option requires 4 DMX channels.
- Fixtures can be controlled via a DMX/RDM or DALI controller.
- For DALI-2 Type 8 applications: The LCBX responds to RGBWAF control.
- 4W version: 4 W/ft, 8W version: 8 W/ft.

Trunk System - LSBX

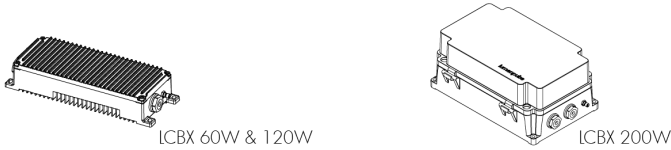


- A - Power input (120-277V, wiring by others)
- B - Large Power Supply (LGPSU) (order separately from Lumenpulse)
- C - Controller (order separately from Lumenpulse, or by others)
- D - Power input (48V, order separately from Lumenpulse - Trunk Power Cable (TKPWR), or equivalent by others. Refer to LSBX specification sheet for details)
- E - Data input (order separately from Lumenpulse - Trunk Data Cable (TKDMX), or equivalent by others. Refer to LSBX specification sheet for details)
- F - LSBX
- G - Power output to next LSBX (48V, order separately from Lumenpulse - Trunk Power Cable (TKPWR), or equivalent by others. Refer to LSBX specification sheet for details)
- H - Data output to next LSBX (order separately from Lumenpulse - Trunk Data Cable (TKDMX), or equivalent by others. Refer to LSBX specification sheet for details)
- I - Jumper cable (LOGNJC)
- J - Lumenfacade Nano Horizontal
- K - Terminator cap

- Consult factory for specific applications and maximum fixture count/run length recommendations.
- Maximum of 1 output to fixture run per LSBX.
- The LSBX has a maximum of 200W for output to fixtures. Consult the LSBX specification sheet for more information.
- The Large Power Supply (LGPSU) has a maximum of 1000W (120V) or 1200W (277V). Consult LGPSU specification sheet for more information.
- RGB color mixture option requires 3 DMX channels. RGBW30K and RGBW40K color mixture options require 4 DMX channels. RGBA color mixture option requires 4 DMX channels.
- 4W version:4 W/ft, 8W version: 8 W/ft.

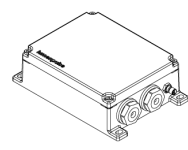
Control Boxes (Order Separately)

LCBX - Low-Voltage Control Box



Low-voltage control and power box. One power and data output to fixture, or fixture run. Refer to LCBX specification sheet for details.

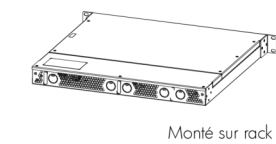
LSBX - Low-Voltage Splitter Box



Low-voltage control and power splitter box. One power and data output to fixture run. Refer to LSBX specification sheet for details.

Remote Power Supply (Order Separately)

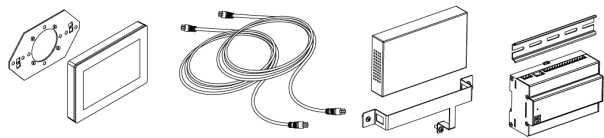
LGPSU - Large Power Supply



Indoor rack-mounted 1.2KW power supply allows for scalable DMX/RDM controlled Lumenfacade Nano systems. Wall Mount version coming soon, consult factory for details.

Control Systems (Order Separately)

PHAROS - Pharos® Designer Lighting Control Kit



The Pharos Designer Lighting Control Kit, available for 1 or 2 DMX universes, allows for complete control of large lighting installations.

EXPERT - Pharos® Expert Control Kit



The Pharos Expert Control Kit, available for 1, 2, 4 or 6 DMX universes, allows for complete control of large lighting installations.

Diagnostic And Addressing Tools (Order Separately)

LID - LumenID



The updated LumenID (LID) is now your all-in-one diagnostic and addressing solution for both DMX/RDM and Lumentalk (LT) systems. Engineered for versatility, it streamlines commissioning and troubleshooting across protocols—no need for multiple tools. Consult the LID specification sheet for full details.

How to Order

Housing	Wattage	Voltage	Length	Color and Color Temperature	Optic
LOGNH Lumenfacade™ Nano Horizontal	4W 4 W/ft 8W 8 W/ft	48V 48 VDC	12 12 3/4 in (1.4 lbs) 24 24 3/4 in (2.9 lbs) 36 36 3/4 in (4.4 lbs) 48 48 3/4 in (6 lbs)	RGB RGB RGBW30K RGB + White 3000K ⁽¹⁾ RGBW40K RGB + White 4000K ⁽¹⁾ RGBA RGB + Amber	8x8 8° x 8° 10x10 10° x 10° 10x30 10° x 30° 10x60 10° x 60° 10x90 10° x 90° 30x10 30° x 10° 30x30 30° x 30° 30x60 30° x 60° 30x90 30° x 90° 60x10 60° x 10° 60x60 60° x 60° 60x90 60° x 90° 90x90 90° x 90° W Wide 120° ⁽²⁾ WW Asymmetric Wallwash

Notes:

1. 2700K, 3500K and Royal Blue available, consult factory. Longer lead times apply.
2. Not compatible with visor optical accessory.

How to Order

Lens	Mounting Options ⁽⁷⁾ ⁽⁸⁾	Finish	Control ⁽¹²⁾	Option	Certification	Buy American Act
CL Clear Lens ⁽³⁾ ⁽⁴⁾ FR Frosted Lens ⁽⁵⁾ HFR Half-Frosted Lens ⁽⁶⁾	SAMNH Slim Adjustable Mounting Nano Horizontal UMPNH Fixed Mounting Nano Horizontal UMASNH Universal Adjustable Mounting Nano Horizontal WAMNH2 Adjustable Wall Mounting Nano Horizontal 2 in WAMNH6 Adjustable Extended Arm Mounting Nano Horizontal 6 in WAMNH12 Adjustable Extended Arm Mounting Nano Horizontal 12 in WAMNH18 Adjustable Extended Arm Mounting Nano Horizontal 18 in WAMNH28 Adjustable Extended Arm Mounting Nano Horizontal 28 in	BK Black Sandtex® BRZ Bronze Sandtex® SI Silver Sandtex® WH Smooth White CC Custom Color & Finish ⁽⁹⁾ ⁽¹⁰⁾ ⁽¹¹⁾	UCTL Universal control (compatible with DMX/RDM or DALI-2 Type 8 systems)	CRC Corrosion-Resistant Coating ⁽¹³⁾ ⁽¹⁴⁾ 3GV 3G ANSI C136.31-2010 Vibration Rating for Bridge Applications ⁽¹⁵⁾	UL UL Compliant CE CE Compliant	BAA Buy America,n ⁽¹⁶⁾ ⁽¹⁷⁾

Notes:

- 3.** Not available for 10x10, W or WW optics.

4. To use only if fixture is lighting the surface perpendicularly. If the fixture is installed close to the wall, select the Half-Frosted lens to soften the beam on the wall.

5. Not available for WW optic.

6. Available for 8x8, 10x10 or WW optics only.

7. One mounting bracket provided for 12 in fixtures. Two mounting brackets provided for 24 in, 36 in and 48 in fixtures.

8. Refer to Mounting Bracket Placement section in the specification sheet for mounting bracket distances that must be respected.

9. Lumenpulse offers a wide selection of RAL CLASSIC (K7) colors with a smooth texture and high-gloss finish. Please consult factory for a list of available K7 colors, other RAL textures and glosses, or to match alternate color charts. Final color matching results may vary.
- 10.** Setup charges apply for RAL colors. Consult factory for details.

11. Longer lead times can be expected for custom RAL color finishes.

12. A Low-Voltage Control Box (LCBX) or Low-Voltage Splitter Box (LSBX) and LumenID (LID) must be specified.

13. Use only when exposed to salt spray. This option is not required for normal outdoor exposure.

14. Setup charges apply. Consult factory for details.

15. Not available for SAMNH mounting option. Mounting bracket distances that must be respected, consult Mounting Bracket Placement section in the specification sheet for details.

16. Not available with CE certification option.

17. Contact your Lumenpulse Sales Representative for more information on order volume details.