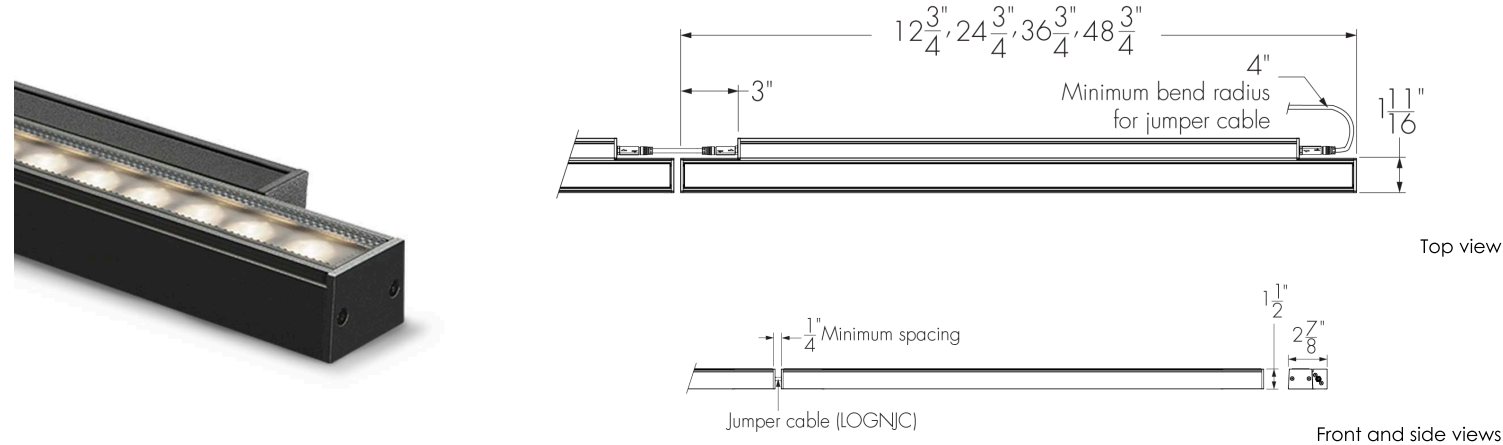


Project Name _____ Qty _____

Type _____ Catalog / Part Number _____



Photometric Summary (7 W/ft)

	Delivered output (lm)	Intensity (peak cd)
8°x8°	2,173	58,720
10°x10°	2,102	45,812
10°x30°	2,038	12,959
10°x60°	2,026	6,911
10°x90°	2,031	3,622
30°x10°	2,043	12,919
30°x30°	2,986	6,894
30°x60°	2,895	4,362
30°x90°	2,917	3,152
60°x10°	2,025	8,019
60°x60°	2,924	2,162
60°x90°	2,905	2,603
90°x90°	2,856	1,766
W (120°)	1,225	602
WW	2,164	10,498

¹ Based on 4000K full output, 4 ft, UCTL control configuration.
² Photometric performance is measured in compliance with IESNA LM-79-24.

Description

The Lumenfacade Nano Horizontal is a high-efficiency linear LED luminaire with a slim profile that makes it easy to conceal and integrate into architectural facades. Available in 12 in, 24 in, 36 in or 48 in sections, the Lumenfacade Nano Horizontal can be configured with a wide number of options, including: optics for grazing, floodlighting, or wall washing; various mounting options, finishes, and controls.

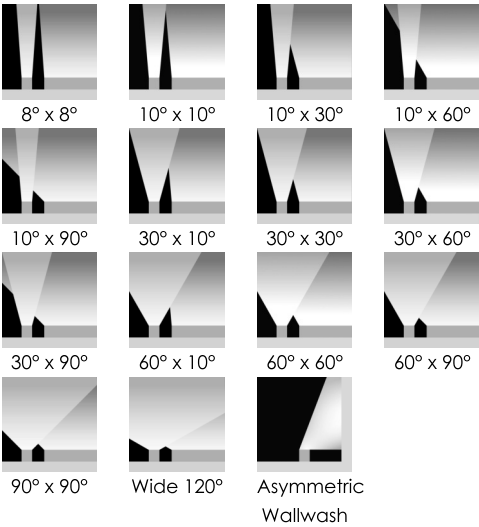
Features

Color and Color Temperature	2200K, 2700K, 3000K, 3500K, 4000K, Red, Green, Blue
Optics	8° x 8°, 10° x 10°, 10° x 30°, 10° x 60°, 10° x 90°, 30° x 10°, 30° x 30°, 30° x 60°, 30° x 90°, 60° x 10°, 60° x 60°, 60° x 90°, 90° x 90°, Wide 120°, Asymmetric Wallwash
Option	Corrosion-Resistant Coating for Hostile Environments 3G ANSI C136.31-2010 Vibration Rating for Bridge Applications
Power Consumption	2 W/ft, 4 W/ft, 7 W/ft
Warranty	5-year limited warranty

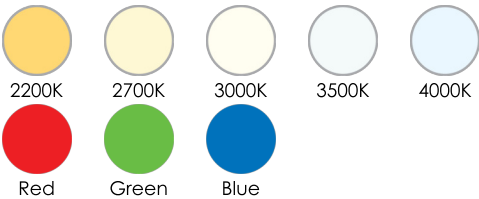
Performance

Maximum Delivered Output	884 lm (2 W/ft, 48 in fixture, 4000K CRI 80+, 30° x 30°, NO control) 1,767 lm (4 W/ft, 48 in fixture, 4000K CRI 80+, 30° x 30°, NO control) 2,986 lm (7 W/ft, 48 in fixture, 4000K CRI 80+, 30° x 30°, NO control)
Maximum Delivered Intensity	20,676 cd at nadir (2 W/ft, 48 in fixture, 4000K CRI 80+, 8° x 8°, NO control) 41,352 cd at nadir (4 W/ft, 48 in fixture, 4000K CRI 80+, 8° x 8°, NO control) 58,720 cd at nadir (7 W/ft, 48 in fixture, 4000K CRI 80+, 8° x 8°, NO control)

Optics



Color and Color Temperature



Control



Ratings

IP66 IK08

Certifications



Illuminance at Distance

Minimum 1 fc at 144 ft (2 W/ft, 48 in fixture, 4000K CRI 80+, 8° x 8°, NO control)
Minimum 1 fc at 203 ft (4 W/ft, 48 in fixture, 4000K CRI 80+, 8° x 8°, NO control)
Minimum 1 fc at 242 ft (7 W/ft, 48 in fixture, 4000K CRI 80+, 8° x 8°, NO control)

Color Consistency

3 SDCM (2 SDCM for 8° x 8°, 10° x 10°, 10° x 30°, 10° x 60°, 10° x 90°, 30° x 10°, 60° x 10°, W and WW optics)

Color Rendering

CRI 80+
CRI 90+ (27K and 30K color temperatures only)

Lumen Maintenance

L70 >90,000 hrs

Physical

Housing Material

Low copper content extruded aluminum

Lens Material

Clear tempered glass

Hardware Material

Stainless steel

End Cap Material

Machined aluminum

Gasket Material

Silicone

Surface Finish

Electrostatically applied polyester powder coat

Weight

1.5 lbs (12 in)
3.2 lbs (24 in)
4.8 lbs (36 in)
6.5 lbs (48 in)

Electrical and Control

Voltage

48 VDC

Resolution (DMX/RDM)

Per fixture, 8-bit or 16-bit

Control

On/Off Control, Universal control (compatible with 0-10V, DALI or DMX/RDM systems)

Environmental

Storage Temperature

-40 °F to 185 °F (device must reach start-up temperature value before operating)

Start-up Temperature

-13 °F to 122 °F

Operating Temperature

-40 °F to 122 °F

Ingress Protection Rating

IP66

Impact Resistance Rating

IK08 (IK09 for 48 in fixtures)

Application Wind Speed

Luminaires were designed based on AASHTO 2013 standard to ensure highest quality and safety. Installation should be validated by a local project engineer to ensure the luminaires are suitable for the wind speed and exposure of the specific application

Accessories (Order Separately)

Cables

Lumenfacade Nano Jumper Cable (LOGNJC), Trunk Power Cable (TKPWR), Trunk Data Cable (TKDMX), Lumenfacade Nano Jumper Cable Joiner (LOGNJC-JOINER)

Control Boxes	Low-Voltage Control Box (LCBX), Low-Voltage Splitter Box (LSBX)
Remote Power Supply	Large Power Supply (LGPSU)
Optical Accessories	Lumenfacade Nano Radial Louver (LOGNRD), Lumenfacade Nano Visor (LOGNVS)
Control Systems	Pharos® Lighting Control Kit (PHAROS), Pharos® Expert Control Kit (EXPERT)
Diagnostic and Addressing Tools	LumenID (LID)

Important

Virtual Patent Marking Notice

This website (<https://www.lmpg.com/patents-trademarks>) is provided to satisfy the virtual patent marking provisions of applicable jurisdictions. Some products listed may be covered by additional patents not referenced here.

Photometric Information

2 W/ft (3000K, CRI 80+)

	Delivered output (lm)	Intensity (peak cd)
8°x8°	711	19,229
10°x10°	688	15,002
10°x30°	668	4,244
10°x60°	664	2,264
10°x90°	665	1,187
30°x10°	669	4,231
30°x30°	822	1,897
30°x60°	796	1,201
30°x90°	803	868
60°x10°	663	2,626
60°x60°	804	595
60°x90°	799	716
90°x90°	786	486
W (120°)	401	197
WW	709	3,438

Based on 3000K, CRI 80+, 4 ft, NO control configuration.

2 W/ft (3000K, CRI 90+)

	Delivered output (lm)	Intensity (peak cd)
8°x8°	598	16,152
10°x10°	578	12,602
10°x30°	561	3,565
10°x60°	558	1,901
10°x90°	559	997
30°x10°	562	3,554
30°x30°	691	1,594
30°x60°	669	1,009
30°x90°	674	729
60°x10°	557	2,206
60°x60°	676	500
60°x90°	671	602
90°x90°	660	409
W (120°)	337	166
WW	595	2,888

Based on 3000K, CRI 90+, 4 ft, NO control configuration.

4 W/ft (3000K, CRI 80+)

	Delivered output (lm)	Intensity (peak cd)
8°x8°	1,423	38,457
10°x10°	1,376	30,004
10°x30°	1,335	8,487
10°x60°	1,327	4,526
10°x90°	1,330	2,372
30°x10°	1,338	8,461
30°x30°	1,643	3,793
30°x60°	1,593	2,400
30°x90°	1,605	1,734
60°x10°	1,326	5,252
60°x60°	1,609	1,189
60°x90°	1,599	1,432
90°x90°	1,572	972
W (120°)	803	394
WW	1,417	6,875

Based on 3000K, CRI 80+, 4 ft, NO control configuration.

4 W/ft (3000K, CRI 90+)

	Delivered output (lm)	Intensity (peak cd)
8°x8°	1,195	32,304
10°x10°	1,156	25,203
10°x30°	1,121	7,129
10°x60°	1,115	3,802
10°x90°	1,117	1,993
30°x10°	1,124	7,107
30°x30°	1,380	3,187
30°x60°	1,338	2,016
30°x90°	1,348	1,457
60°x10°	1,114	4,411
60°x60°	1,351	999
60°x90°	1,343	1,203
90°x90°	1,320	816
W (120°)	674	331
WW	1,191	5,775

Based on 3000K, CRI 90+, 4 ft, NO control configuration.

7 W/ft (3000K, CRI 80+)

	Delivered output (lm)	Intensity (peak cd)
8°x8°	2,021	54,610
10°x10°	1,955	42,605
10°x30°	1,895	12,052
10°x60°	1,884	6,427
10°x90°	1,889	3,368
30°x10°	1,900	12,015
30°x30°	2,777	6,411
30°x60°	2,692	4,057
30°x90°	2,713	2,931
60°x10°	1,883	7,458
60°x60°	2,719	2,011
60°x90°	2,702	2,421
90°x90°	2,656	1,642
W (120°)	1,139	560
WW	2,013	9,763

Based on 3000K, CRI 80+, 4 ft, NO control configuration.

7 W/ft (3000K, CRI 90+)

	Delivered output (lm)	Intensity (peak cd)
8°x8°	1,698	45,872
10°x10°	1,642	35,788
10°x30°	1,592	10,124
10°x60°	1,583	5,399
10°x90°	1,587	2,830
30°x10°	1,596	10,092
30°x30°	2,333	5,386
30°x60°	2,262	3,408
30°x90°	2,279	2,462
60°x10°	1,582	6,264
60°x60°	2,284	1,689
60°x90°	2,269	2,033
90°x90°	2,231	1,380
W (120°)	957	470
WW	1,691	8,201

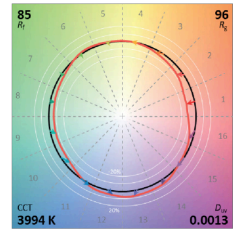
Based on 3000K, CRI 90+, 4 ft, NO control configuration.

Photometric performance is measured in compliance with IESNA LM 79-08.

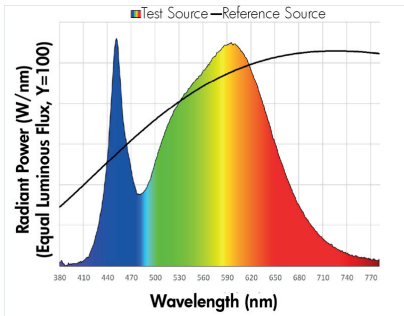
Chromaticity Data

TM-30 - 4000K

CCT	CIE		TM-30	
4000K	R _a	83	85	R _f
	R _g	14	96	R _g

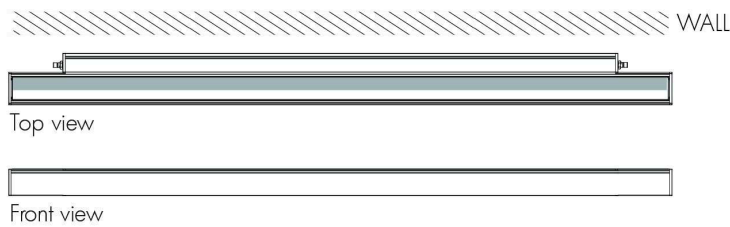


Spectral Power Distribution



Optical Option Installation Details

HFR - Half-Frosted Lens



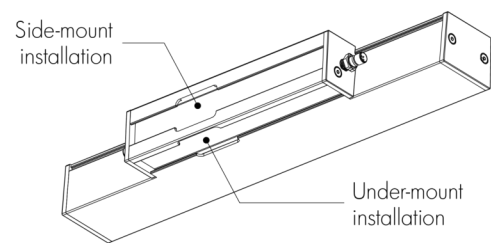
- Always position frosted side toward the wall.
- Available for 8x8, 10x10, 10x30 or WW optics only.

WW - Asymmetric Wallwash

Recommended setback from wall is 1/10 of the wall height.

Example: 2 ft setback for a 20 ft wall.

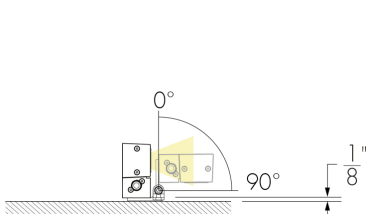
Mounting Points



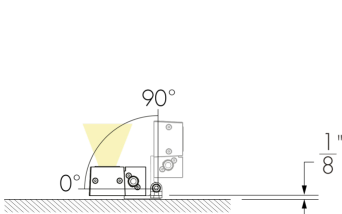
Mounting Options

One mounting bracket provided for 12 in fixtures. Two mounting brackets provided for 24 in, 36 in and 48 in fixtures. See installation instructions for details.

SAMNH - Slim Adjustable Mounting Nano Horizontal



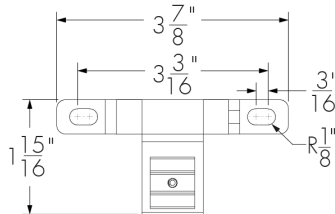
Side-mount installation



Under-mount installation

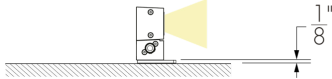
Not suitable when fixture is exposed to wind.

SAMNH - Mounting Hole Pattern

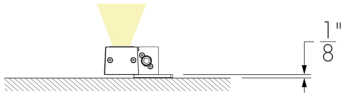


One mounting bracket provided for 12 in fixtures. Two mounting brackets provided for 24 in, 36 in and 48 in fixtures. See installation instructions for details.

UMPNH - Fixed Mounting Nano Horizontal

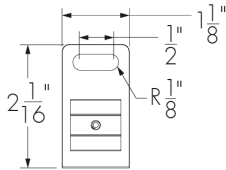


Side-mount installation

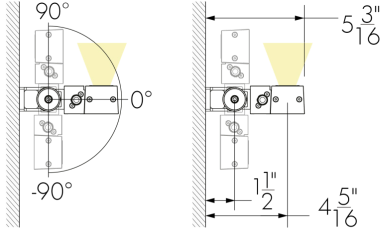


Under-mount installation

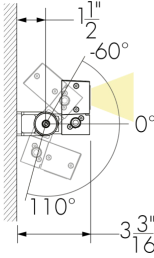
UMPNH - Mounting Hole Pattern



UMASNH - Universal Adjustable Mounting Nano

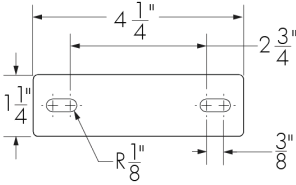


Side-mount installation

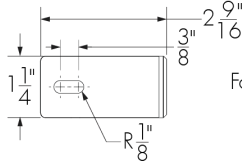


Under-mount installation

UMASNH - Mounting Hole Pattern

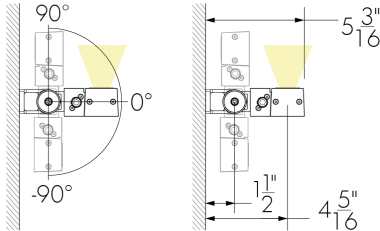


For 1 ft fixtures

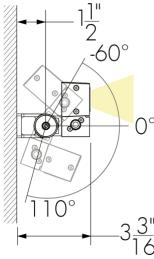


For 2 ft, 3 ft and 4 ft fixtures

WAMNH2 - Adjustable Extended Arm Mounting
Nano Horizontal 2 in

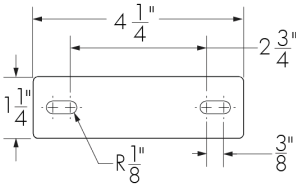


Side-mount installation

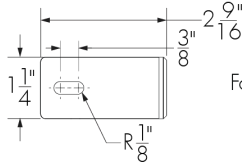


Under-mount installation

WAMNH2 - Mounting Hole Pattern

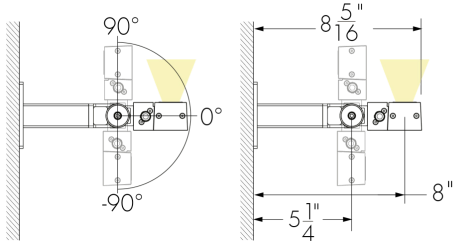


For 1 ft fixtures

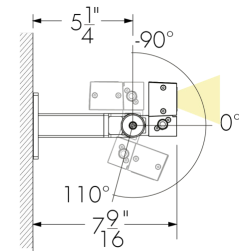


For 2 ft, 3 ft and 4 ft fixtures

WAMNH6 - Adjustable Extended Arm Mounting
Nano Horizontal 6 in

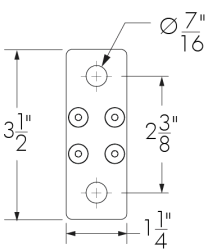


Side-mount installation

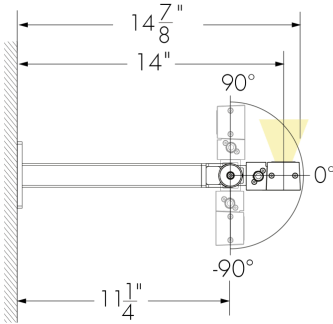


Under-mount installation

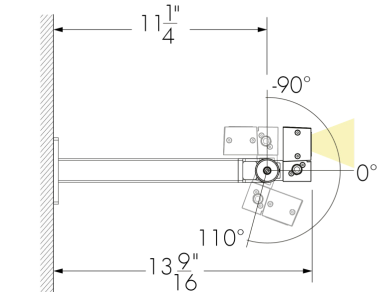
WAMNH6 - Mounting Hole Pattern



WAMNH12 - Adjustable Extended Arm Mounting
Nano Horizontal 12 in

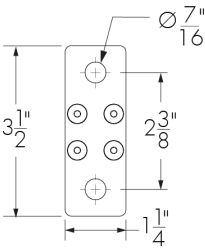


Side-mount installation

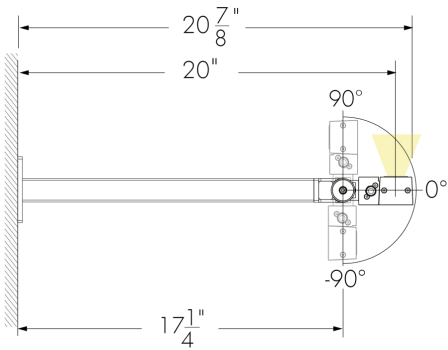


Under-mount installation

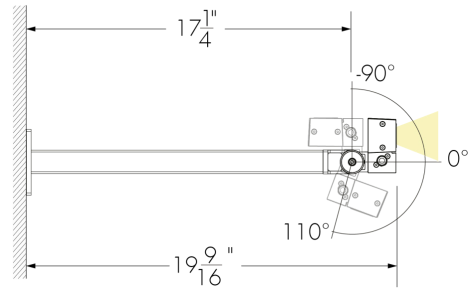
WAMNH12 - Mounting Hole Pattern



WAMNH18 - Adjustable Extended Arm Mounting
Nano Horizontal 18 in

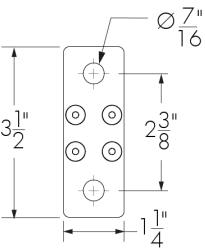


Side-mount installation

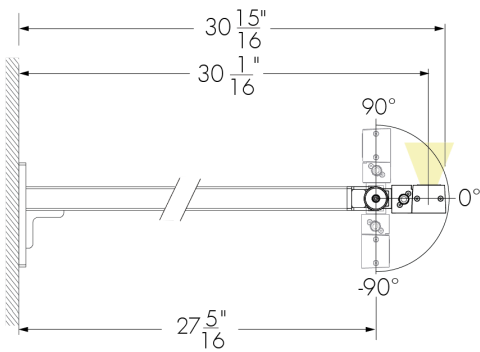


Under-mount installation

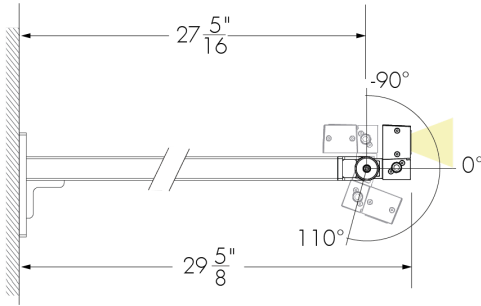
WAMNH18 - Mounting Hole pattern



WAMNH28 - Adjustable Extended Arm Mounting
Nano Horizontal 28 in

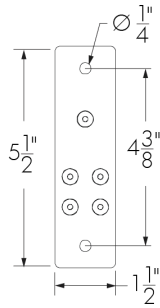


Side-mount installation

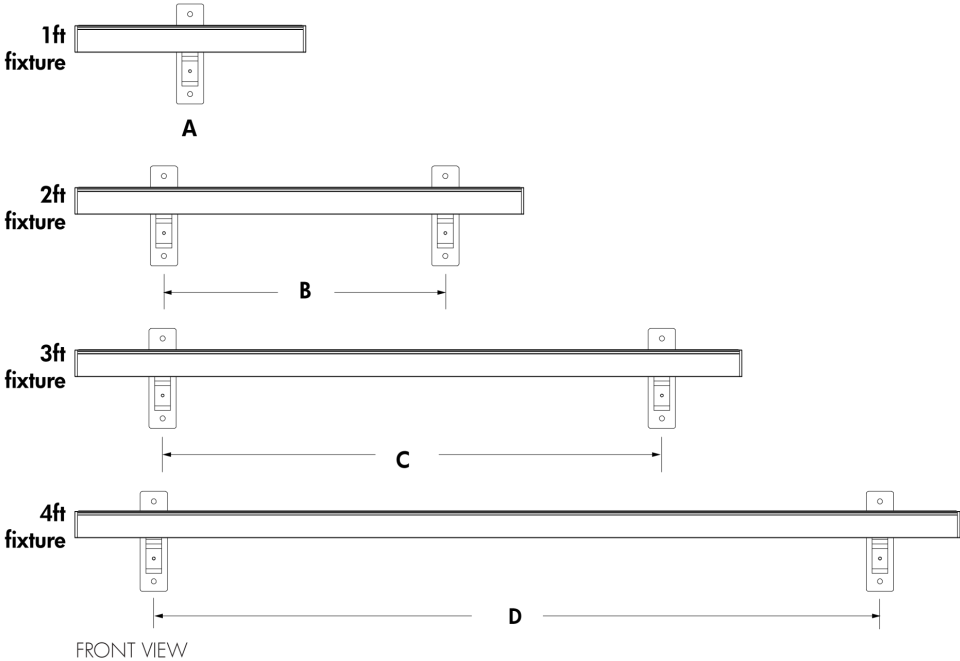


Under-mount installation

WAMNH28 - Mounting Hole Pattern



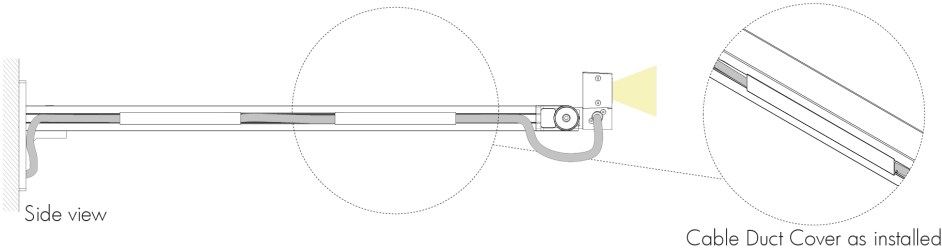
Mounting Bracket Placement (Minimum and Maximum Distances)



- A - Bracket in the center of the fixture
 - B - Minimum 14 in to maximum 16 in
 - C - Minimum 26 in to maximum 28 in
 - D - Minimum 38 1/2 in to maximum 40 1/2 in
- LOGNH with bracket WAMNH28 shown

The mounting bracket(s) to be centered on fixture and as symmetrical as possible. Distances must be respected for all installations.

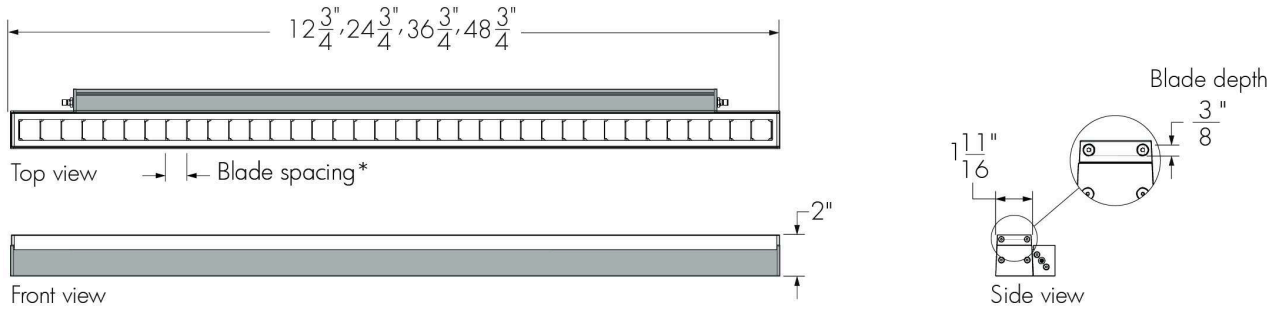
Cable Management System for Wall Mounting Brackets



- No Cable Duct Cover provided for WAMNH2 and WAMNH6 mounting arms.
- 1 Cable Duct Cover provided for WAMNH12 mounting arm.
- 2 Cable Duct Covers provided for WAMNH18 and WAMNH28 mounting arms.

Optical Accessories (Order Separately)

LOGNRD - Radial Louver For Lumenfacade Nano



*15/16 in blade spacing for 8° x 8°, 10° x 10°, 10° x 30°, 10° x 60°, 10° x 90°, 30° x 10° and 60° x 10° optics.

*1 15/16 in blade spacing for 30° x 30°, 30° x 60°, 30° x 90°, 60° x 60°, 60° x 90° and 90° x 90° optics.

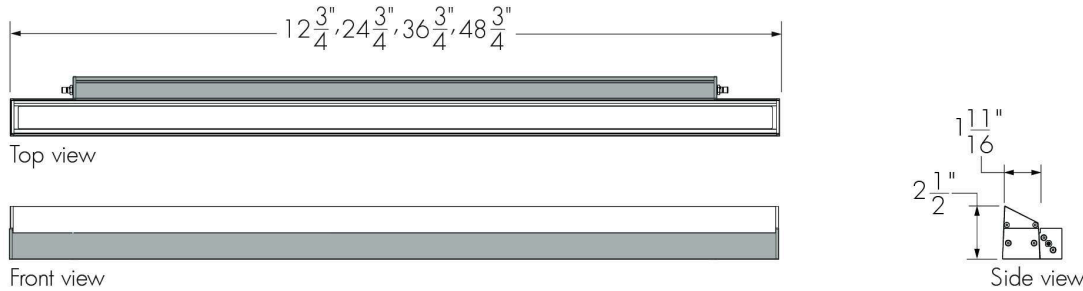
LOGNRD-LENGTH-FINISH-OPTIONS

Please specify:

LENGTH: 12 in, 24 in, 36 in or 48 in; **FINISH:** BK - Black Sandtex®, BRZ - Bronze Sandtex®, SI - Silver Sandtex®, WH - Smooth white or CC - custom color and finish (please specify RAL color); **OPTIONS:** CRC - Corrosion-resistant coating for hostile environments

- The addition of a louver will affect beam distribution. Consult factory for application support.
- Not suitable for wide 120° and asymmetric wallwash optics.
- CRC option is not available for indoor applications.
- Maximum one accessory per fixture. Louvers are field installable.

LOGNVS - Visor For Lumenfacade Nano



LOGNVS-LENGTH-FINISH-OPTIONS

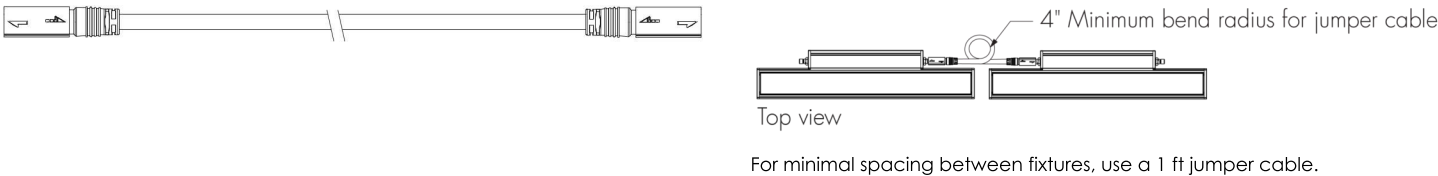
Please specify:

LENGTH: 12 in, 24 in, 36 in or 48 in; **FINISH:** BK - Black Sandtex®, BRZ - Bronze Sandtex®, SI - Silver Sandtex®, WH - Smooth white or CC - custom color and finish (please specify RAL color); **OPTIONS:** CRC - Corrosion-resistant coating for hostile environments

- The addition of a visor will affect beam distribution. Consult factory for application support.
- Not suitable for wide 120° optic.
- CRC option is not available for indoor applications.
- Maximum one accessory per fixture. Visors are field installable.

Cables (Order Separately)

LOGNJC - Jumper Cable For Lumenfacade Nano

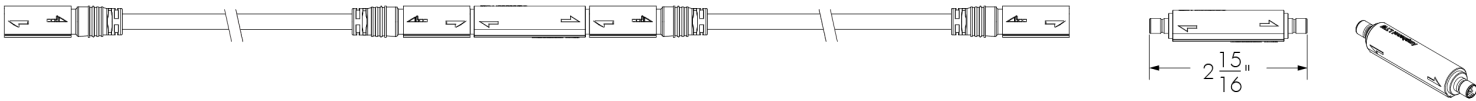


LOGNJC-CERTIFICATION-LENGTH-CABLE COLOR

- Please specify:
- CERTIFICATION:** UL or CE; **LENGTH:** 1 ft to 30 ft (available in 1 ft increments) or 50 ft; **CABLE COLOR:** black or white (connectors are the same color as the specified cable color).
- Suitable for dimming/data and non-dimming applications.
 - Consult Lumenfacade Nano jumper cable specification sheet for all available cable lengths and additional information.

Joiner (Order Separately)

LOGNJC-JOINER - Joiner For Lumenfacade Nano Jumper Cable

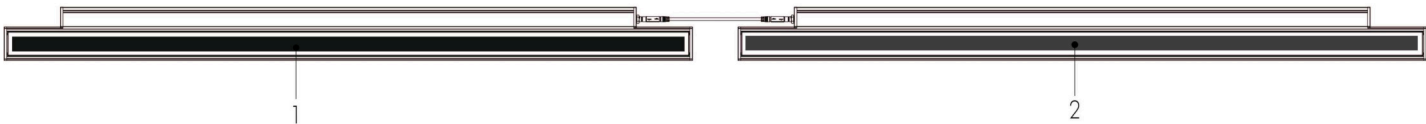


- Use joiners to connect and lengthen jumper cables.
- Joiners add voltage drops. Consult factory to confirm impact on run length.
- Available in black.

Resolution Details

DMX/RDM Control, Resolution Per Fixture: Each Fixture is Addressed Independently

DMX Addresses:



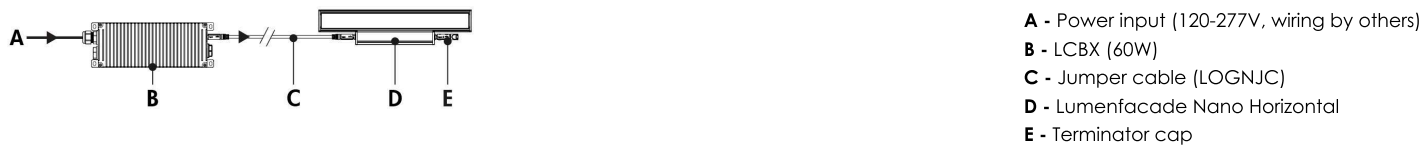
UCTL control option

- 48 in fixtures shown.
- Applicable for UCTL control only. A DMX/RDM enabled LCBX or LSBX is required for DMX/RDM control

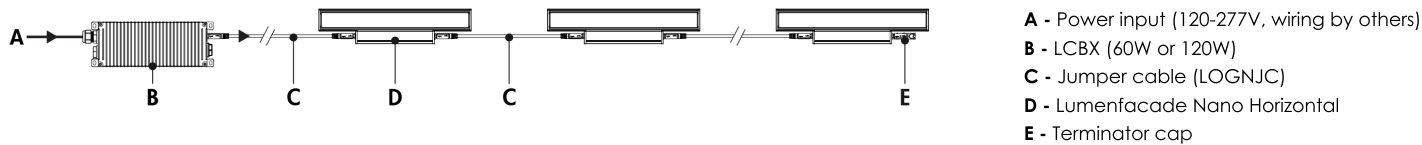
Typical Wiring Diagrams

On/Off Control (NO)

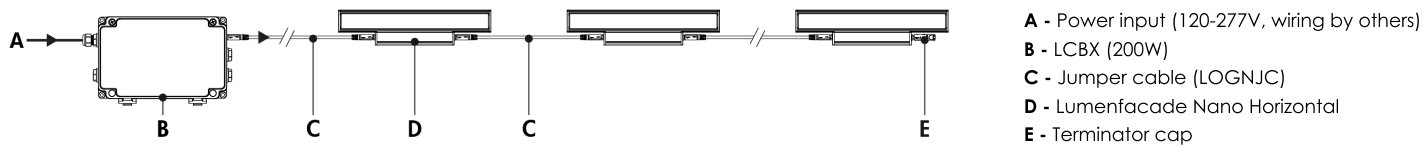
Single Unit - LCBX 60W



Continuous Run - LCBX 60W or 120W

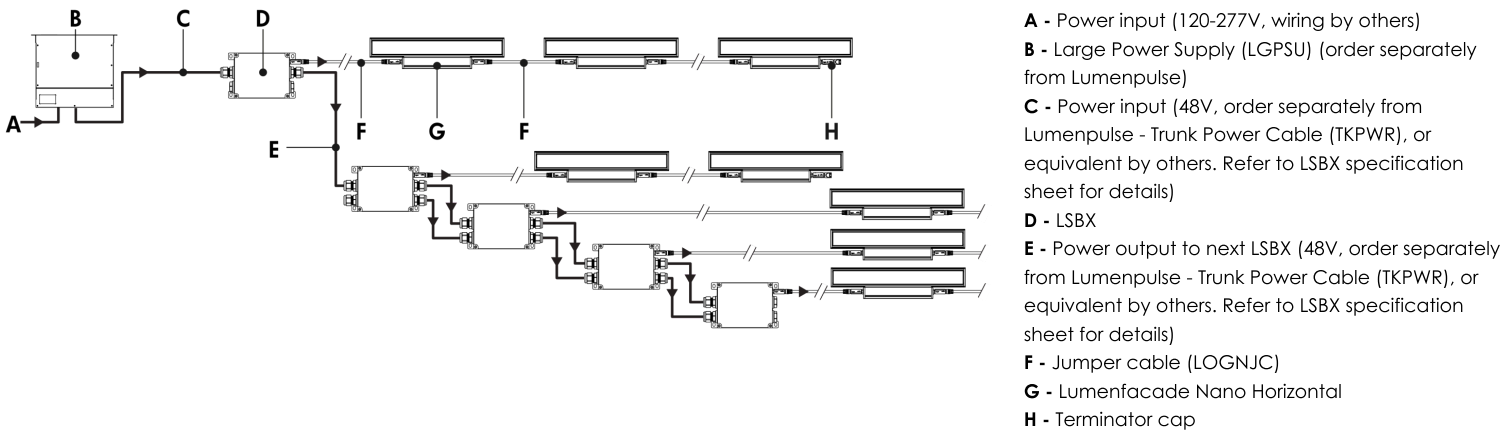


Continuous Run - LCBX 200W



- Consult factory for specific applications and maximum fixture count/run length recommendations.
- Maximum of 1 output to fixture, or fixture run, per LCBX.
- Consult the LCBX specification sheet for more information.
- 2W version: 2 W/ft; 4W version: 4 W/ft; 7W version: 7 W/ft.

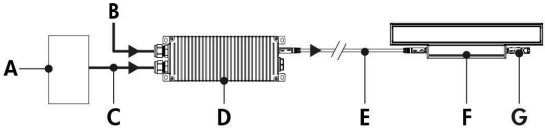
Trunk System - LSBX



- Consult factory for specific applications and maximum fixture count/run length recommendations.
- Maximum of 1 output to fixture run per LSBX.
- The LSBX has a maximum of 200W for output to fixtures. Consult the LSBX specification sheet for more information.
- The Large Power Supply (LGPSU) has a maximum of 1000W (120V) or 1200W (277V). Consult LGPSU specification sheet for more information.
- 2W version: 2 W/ft; 4W version: 4 W/ft; 7W version: 7 W/ft.

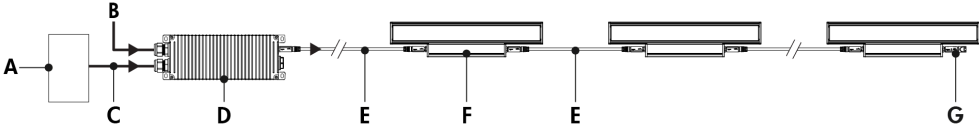
UCTL - Universal Control

Single Unit - LCBX 60W



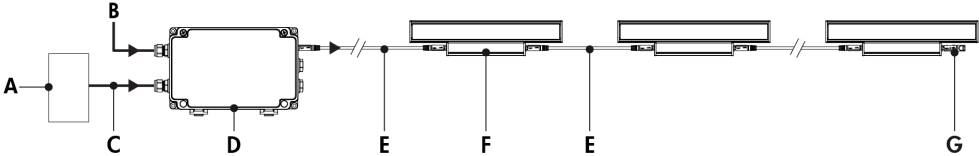
- A - Dimmer/controller (order separately from Lumenpulse, or by others)
- B - Power input (120-277V, wiring by others)
- C - Data input (wiring by others)
- D - LCBX (60W)
- E - Jumper cable (LOGNJC)
- F - Lumenfacade Nano Horizontal
- G - Terminator cap

Continuous Run - LCBX 60W or 120W



- A - Dimmer/controller (order separately from Lumenpulse, or by others)
- B - Power input (120-277V, wiring by others)
- C - Data input (wiring by others)
- D - LCBX (60W or 120W)
- E - Jumper cable (LOGNJC)
- F - Lumenfacade Nano Horizontal
- G - Terminator cap

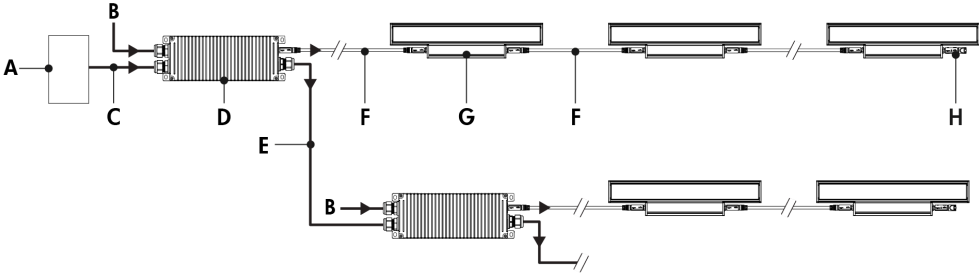
Continuous Run - LCBX 200W



- A - Dimmer/controller (order separately from Lumenpulse, or by others)
- B - Power input (120-277V, wiring by others)
- C - Data input (wiring by others)
- D - LCBX (200W)
- E - Jumper cable (LOGNJC)
- F - Lumenfacade Nano Horizontal
- G - Terminator cap

Continuous Run - Daisy Chain

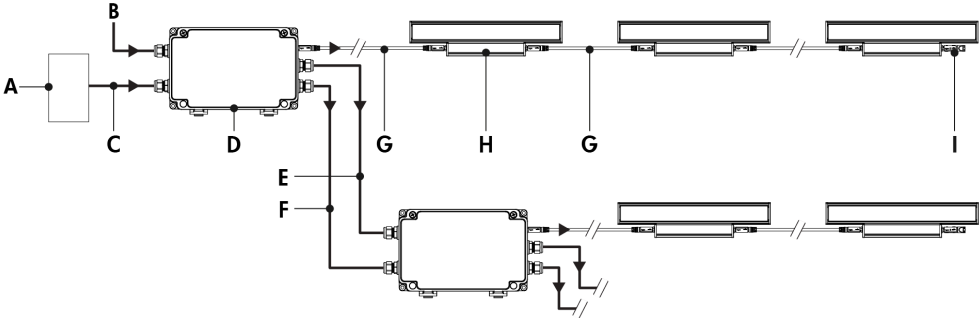
LCBX 60W or 120W



- A - Dimmer/controller (order separately from Lumenpulse, or by others)
- B - Power input (120-277V, wiring by others)
- C - Data input (wiring by others)
- D - LCBX (60W or 120W)
- E - Data output to next LCBX (wiring by others)
- F - Jumper cable (LOGNJC)
- G - Lumenfacade Nano Horizontal
- H - Terminator cap

Continuous Run - Daisy Chain

LCBX 200W



- A - Dimmer/controller (order separately from Lumenpulse, or by others)
- B - Power input (120-277V, wiring by others)
- C - Data input (wiring by others)
- D - LCBX (200W)
- E - Power output to next LCBX (120-277V, wiring by others)
- F - Data output to next LCBX (wiring by others)
- G - Jumper cable (LOGNJC)
- H - Lumenfacade Nano Horizontal
- I - Terminator cap

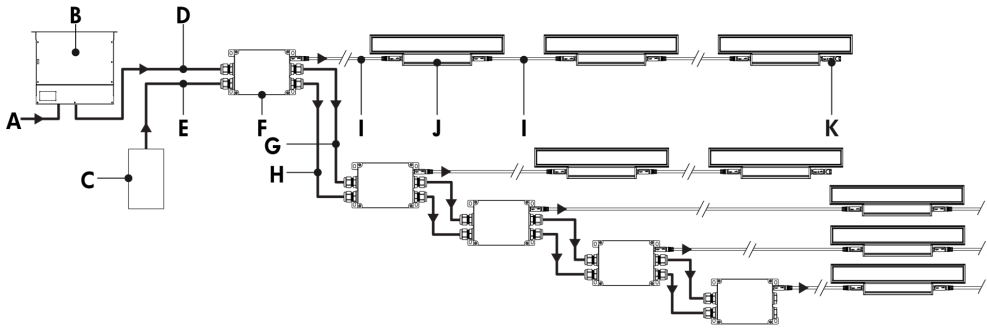
Maximum Run of Fixtures - Lumenfacade Nano® LOGNH White & Static Colors

10ft Jumper Cable			
Wattage	2W/ft	4W/ft	7W/ft
Maximum Run of Fixtures per LCBX 60W	26ft	13ft	7ft
Maximum Run of Fixtures per LCBX 120W	52ft	25ft	15ft
Maximum Run of Fixtures per LCBX 200W	88ft*	45ft	25ft
25ft Jumper Cable			
Wattage	2W/ft	4W/ft	7W/ft
Maximum Run of Fixtures per LCBX 60W	26ft	13ft	7ft
Maximum Run of Fixtures per LCBX 120W	52ft	25ft	15ft
Maximum Run of Fixtures per LCBX 200W	88ft*	45ft	25ft
50ft Jumper Cable			
Wattage	2W/ft	4W/ft	7W/ft
Maximum Run of Fixtures per LCBX 60W	26ft	13ft	7ft
Maximum Run of Fixtures per LCBX 120W	52ft	25ft	15ft
Maximum Run of Fixtures per LCBX 200W	88ft*	45ft	25ft

*Example: 2W/ft = 88ft maximum run of end to end fixtures per LCBX 200W.
(22 fixtures maximum for 4ft LOGNH 2W/ft, 88 fixtures maximum for 1ft LOGNH 2W/ft).
Consult factory for system validation prior to quoting and ordering.

- Consult factory for specific applications and maximum fixture count/run length recommendations.
- Maximum of 1 output to fixture, or fixture run, per LCBX.
- Consult the LCBX specification sheet for more information.
- UCTL can be controlled via a 1-10V dimmer, DALI controller or DMX/RDM controller.
- For 1-10V dimming applications:
 - 1-10V mA ratings: Current Sink Mode: 2mA per LCBX; Current Source Mode: 2mA per LCBX.
- For DALI applications:
 - A maximum of 64 DALI fixtures per DALI loop.
- For DMX/RDM applications:
 - Each fixture requires 1 DMX channel.
- 1% minimum dimming value.
- 2W version: 2 W/ft; 4W version: 4 W/ft; 7W version: 7 W/ft.

Trunk System - LSBX

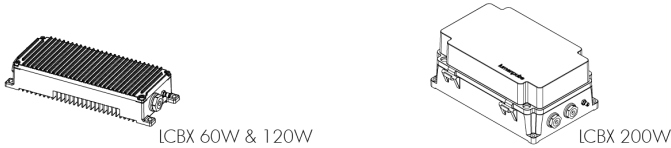


- A** - Power input (120-277V, wiring by others)
- B** - Large Power Supply (LGPSU) (order separately from Lumenpulse)
- C** - Controller (order separately from Lumenpulse, or by others)
- D** - Power input (48V, order separately from Lumenpulse - Trunk Power Cable (TKPWR), or equivalent by others. Refer to LSBX specification sheet for details)
- E** - Data input (order separately from Lumenpulse - Trunk Data Cable (TKDMX), or equivalent by others. Refer to LSBX specification sheet for details)
- F** - LSBX
- G** - Power output to next LSBX (48V, order separately from Lumenpulse - Trunk Power Cable (TKPWR), or equivalent by others. Refer to LSBX specification sheet for details)
- H** - Data output to next LSBX (order separately from Lumenpulse - Trunk Data Cable (TKDMX), or equivalent by others. Refer to LSBX specification sheet for details)
- I** - Jumper cable (LOGNJC)
- J** - Lumenfacade Nano Horizontal
- K** - Terminator cap

- Consult factory for specific applications and maximum fixture count/run length recommendations.
- Maximum of 1 output to fixture run per LSBX.
- The LSBX has a maximum of 200W for output to fixtures. Consult the LSBX specification sheet for more information.
- The Large Power Supply (LGPSU) has a maximum of 1000W (120V) or 1200W (277V). Consult LGPSU specification sheet for more information.
- Each fixture requires 1 DMX channel.
- 1% minimum dimming value.
- 2W version: 2 W/ft; 4W version: 4 W/ft; 7W version: 7 W/ft.

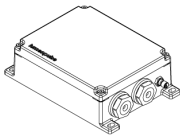
Control Boxes (Order Separately)

LCBX - Low-Voltage Control Box



Low-voltage control and power box. One power and data output to fixture, or fixture run. Refer to LCBX specification sheet for details.

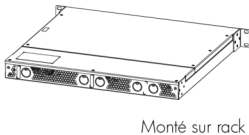
LSBX - Low-Voltage Splitter Box



Low-voltage control and power splitter box. One power and data output to fixture run. Refer to LSBX specification sheet for details.

Remote Power Supply (Order Separately)

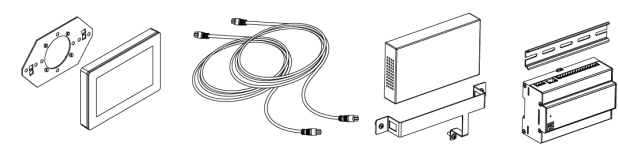
LGPSU - Large Power Supply



Indoor rack-mounted 1.2KW power supply allows for scalable DMX/RDM controlled Lumenfacade Nano systems. Wall Mount version coming soon, consult factory for details.

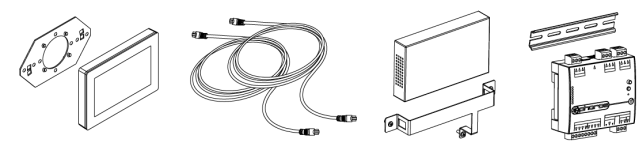
Control Systems (Order Separately)

PHAROS - Pharos® Designer Lighting Control Kit



The Pharos Designer Lighting Control Kit, available for 1 or 2 DMX universes, allows for complete control of large lighting installations.

EXPERT - Pharos® Expert Control Kit



The Pharos Expert Control Kit, available for 1, 2, 4 or 6 DMX universes, allows for complete control of large lighting installations.

Diagnostic And Addressing Tools (Order Separately)

LID - LumenID



The updated LumenID (LID) is now your all-in-one diagnostic and addressing solution for both DMX/RDM and Lumentalk (LT) systems. Engineered for versatility, it streamlines commissioning and troubleshooting across protocols—no need for multiple tools. Consult the LID specification sheet for full details.

How to Order

Housing	Wattage	Voltage	Length	Color and Color Temperature ⁽²⁾	Color Rendering ⁽⁴⁾
LOGNH Lumenfacade™ Nano Horizontal	2W 2 W/ft ⁽¹⁾ 4W 4 W/ft 7W 7 W/ft	48V 48 VDC	12 12 3/4 in (1.5 lbs) 24 24 3/4 in (3.2 lbs) 36 36 3/4 in (4.8 lbs) 48 48 3/4 in (6.5 lbs)	22K 2200K 27K 2700K 30K 3000K 35K 3500K 40K 4000K RD Red ⁽³⁾ GR Green ⁽³⁾ BL Blue ⁽³⁾	80 CRI 80+ 90 CRI 90+ ⁽⁵⁾

- Notes:
1. Not available for static red, green or blue color options.

2. Consult factory for availability of static Royal Blue, 6500K and 90+ CRI.

3. Static colors made to order 8-10 weeks.

4. Not applicable to static red, green or blue color options.

5. Available for 27K and 30K color temperatures only.

How to Order

Optic	Lens	Mounting Options ⁽¹²⁾ ⁽¹³⁾	Finish	Control ⁽¹⁷⁾	Option	Certification	Buy America.n Act
8x8 8° x 8°	CL Clear Lens ⁽⁸⁾ ⁽⁹⁾	SAMNH Slim Adjustable Mounting Nano Horizontal	BK Black Sandtex®	NO On/Off Control	CRC Corrosion-Resistant Coating ⁽¹⁸⁾ ⁽¹⁹⁾	UL UL Compliant	BAA Buy America.n ⁽²¹⁾ ⁽²²⁾
10x10 10° x 10°	FR Frosted Lens ⁽¹⁰⁾	BRZ Bronze Sandtex®	UCTL Universal control (compatible with 0-10V, DALI or DMX/RDM systems)	3GV 3G ANSI C136.31-2010 Vibration Rating for Bridge Applications ⁽²⁰⁾	CE CE Compliant		
10x30 10° x 30°	HFR Half-Frosted Lens ⁽¹¹⁾	UMPNH Fixed Mounting Nano Horizontal	SI Silver Sandtex®				
10x60 10° x 60°		UMASNH Universal Adjustable Mounting Nano Horizontal	WH Smooth White				
10x90 10° x 90°		WAMNH2 Adjustable Wall Mounting Nano Horizontal 2 in	CC Custom Color & Finish ⁽¹⁴⁾ ⁽¹⁵⁾ ⁽¹⁶⁾				
30x10 30° x 10°		WAMNH6 Adjustable Extended Arm Mounting Nano Horizontal 6 in					
30x30 30° x 30°		WAMNH12 Adjustable Extended Arm Mounting Nano Horizontal 12 in					
30x60 30° x 60°		WAMNH18 Adjustable Extended Arm Mounting Nano Horizontal 18 in					
30x90 30° x 90°		WAMNH28 Adjustable Extended Arm Mounting Nano Horizontal 28 in					
60x10 60° x 10°							
60x60 60° x 60°							
60x90 60° x 90°							
90x90 90° x 90							
W Wide 120° ⁽⁶⁾							
WW Asymmetric Wallwash ⁽⁷⁾							

Notes:

- 6.** Not compatible with louver or visor optical accessories.

7. Not compatible with louver optical accessory.

8. Not available for 10x10, W or WW optics.

9. To use only if fixture is lighting the surface perpendicularly. If the fixture is installed close to the wall, select the Half-Frosted lens to soften the beam on the wall.

10. Not available for WW optic.

11. Available for 8x8, 10x10, 10x30 or WW optics only.

12. One mounting bracket provided for 12 in fixtures. Two mounting brackets provided for 24 in, 36 in and 48 in fixtures.

13. Refer to Mounting Bracket Placement section in the specification sheet for mounting bracket distances that must be respected.
- 14.** Lumenpulse offers a wide selection of RAL CLASSIC (K7) colors with a smooth texture and high-gloss finish. Please consult factory for a list of available K7 colors, other RAL textures and glosses, or to match alternate color charts. Final color matching results may vary.

15. Setup charges apply for RAL colors. Consult factory for details.

16. Longer lead times can be expected for custom RAL color finishes.

17. A Low-Voltage Control Box (LCBX) or Low-Voltage Splitter Box (LSBX) and LumenID (LID) must be specified.

18. Use only when exposed to salt spray. This option is not required for normal outdoor exposure.

19. Setup charges apply. Consult factory for details.

20. Not available for SAMNH mounting option. Mounting bracket distances that must be respected, consult Mounting Bracket Placement section in the specification sheet for details.

21. Not available with CE certification option.

22. Contact your Lumenpulse Sales Representative for more information on order volume details.