

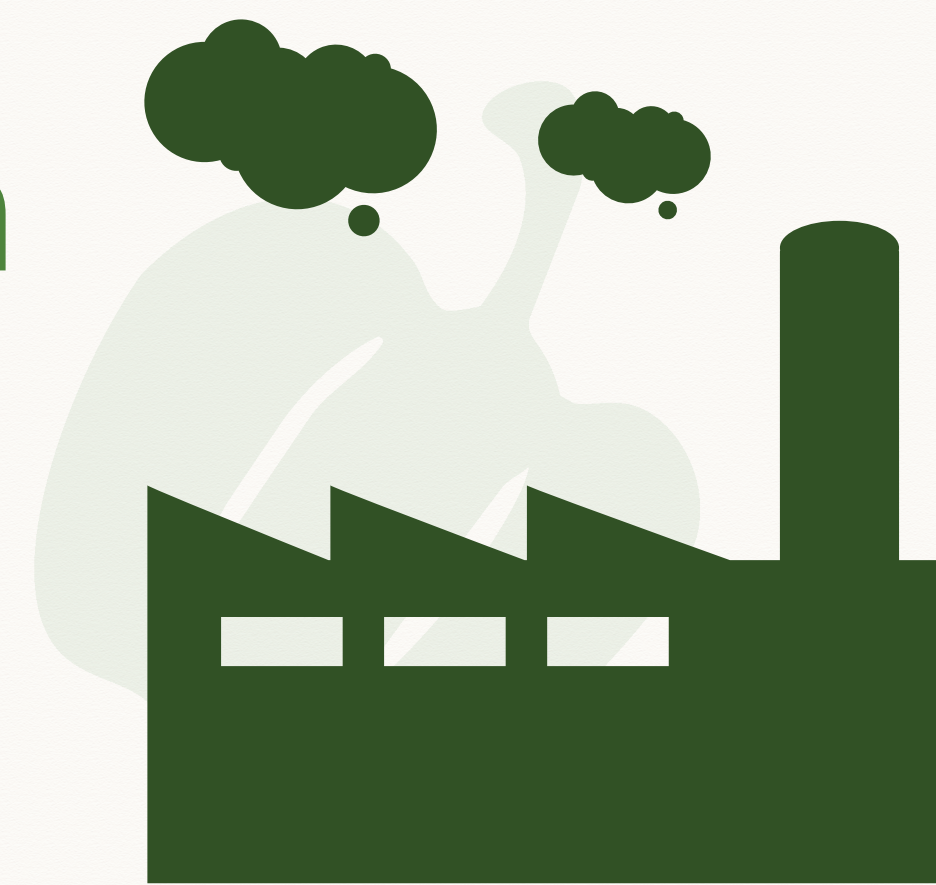


# More Plants Please!

Choices with Impact: Reduce Greenhouse Gas Emissions

## What is the impact of meat production on the quality of our air?

Each serving of beef produces 4.5 lbs of carbon dioxide equivalents, but what does that really mean?



1 Serving of Beef = Driving 5 mi



10 Servings of Beef = Driving 10 mi



1,000 Servings of Beef = Driving 5,003 mi

# 30 million

servings of beef from students across the country

# = 151,586,568 miles

Equal to driving around the Earth roughly 6,000 times!



## Make the air a little cleaner by swapping your beef for plants at lunch today!

