

4809

Lower Honoapiilani Road

KAHANA

Embrace the splendor of private island living at this unparalleled Maui Estate





Some homes are built to be admired. Others are crafted to be lived in, to become the backdrop for cherished memories, and to embody the very spirit of the land they rest upon. 4809 Lower Honoapiilani Road in Kahana is such a place—an oceanfront estate that doesn't just sit by the sea but seems to breathe in rhythm with it.



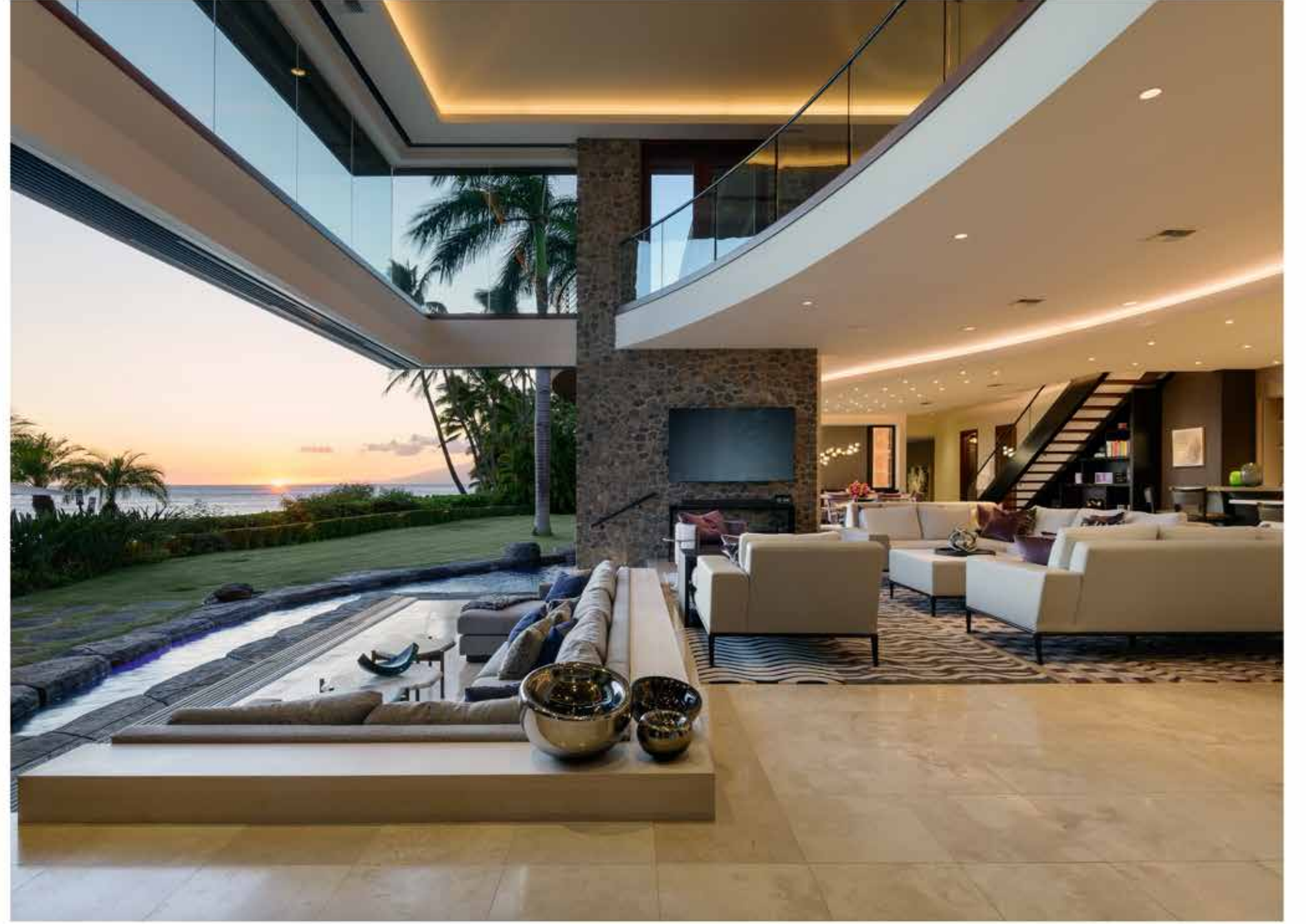




4809

Lower Honoapiilani Road

represents one of the most remarkable examples of modern oceanfront living on West Maui. Set on a half-acre parcel with over 250 feet of direct shoreline, the residence immediately distinguishes itself through its ambitious design, generous scale, and integration of indoor and outdoor living.

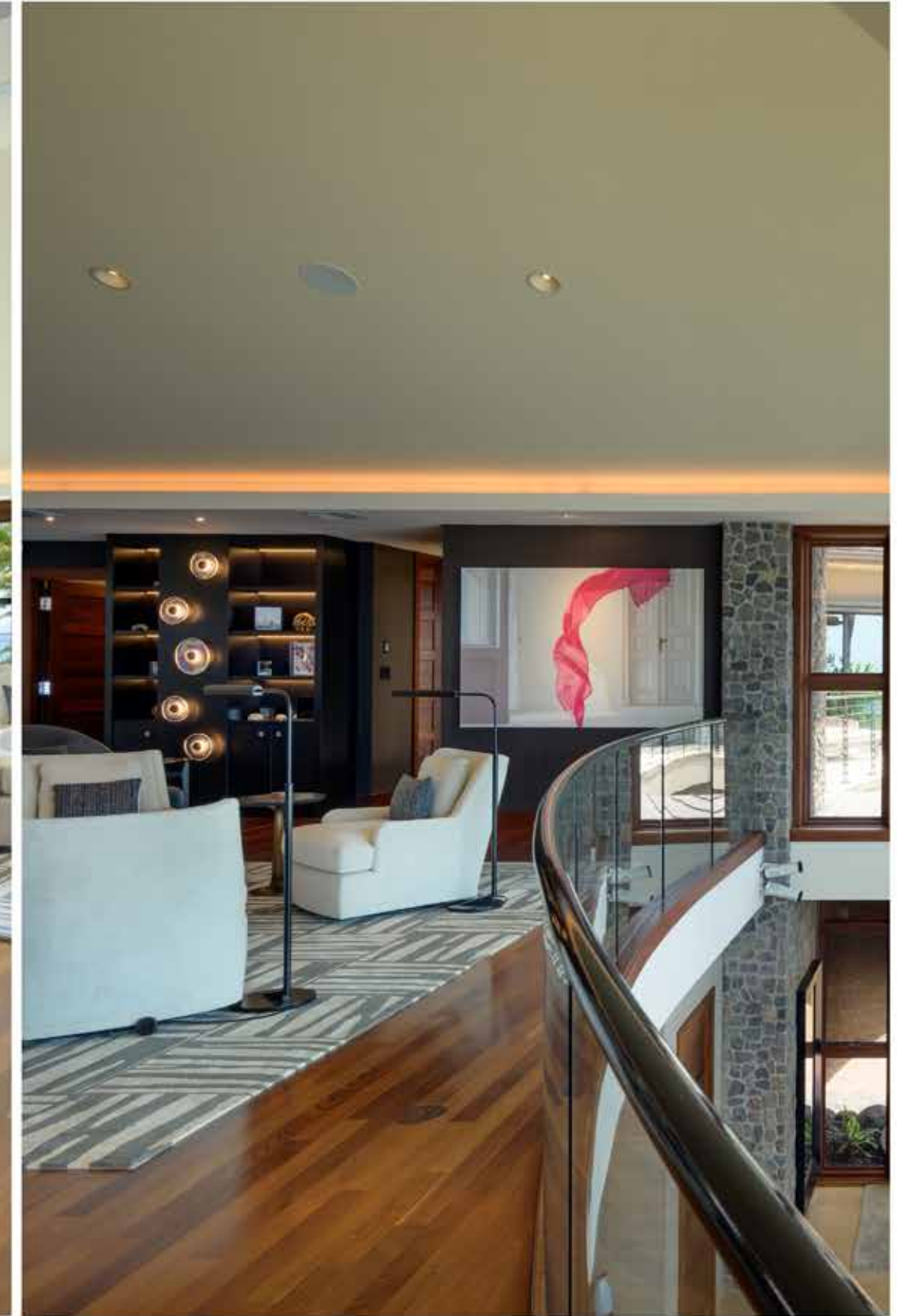




This nearly 10,000 square foot residence epitomizes Pacific Rim architecture. Glass pocket doors slide into rock walls bordering the spacious great room, which includes a grand living and dining area as well as a fabulous open kitchen with separate enclosed butler's pantry. A floating mezzanine soars above the great room with a phenomenal sports bar and an elegant lounging area.









There are seven oceanfront suites, one being utilized as a media suite and one as a gym, each with a luxurious bath and most with a wet bar. Every suite is oceanfront with sweeping views of the neighboring island of Lanai and glimpses of Molokai. The large primary suite offers complete privacy and a fabulous outdoor lanai. The primary bathroom features an Italian custom two-person stone Jacuzzi tub, exquisite stonework, built-in wall speakers, and an expansive closet.















Extensive enhancements to the property include a new roof with 60KW photovoltaic solar system. Throughout the interior, a selection of doors was replaced with new 10 ft. doors, freshly stained wood, new screens, and high-efficiency shades. A new hydraulic elevator was installed as well as new commercial-grade high-efficiency air conditioning systems. Electronics have been significantly improved with a Control 4 System, a new Lutron system, top-of-the-line speakers throughout, and a state-of-the-art security camera system.





An attached oceanfront one-bedroom Ohana can be utilized as a private office, for guests, or a caretaker.



A custom pool, complete with spa and waterfalls, is easily accessible from the great room. Moving outdoors, the oceanfront lanai and grilling area offer expansive coastal views. An outdoor landscape sound system has been integrated into the tropical gardens along with Tiki gas lamps and a fire pit from a local artist. The driveway was redesigned for convenience with the addition of a second entrance. Custom wood gates give the vehicular and pedestrian entrances a sophisticated natural appeal.







4809 Lower Honoapiilani Road is immediately ready to enjoy an unparalleled lifestyle. Investments in real estate provide intangible benefits unlike any other. Ownership in a prime, safe investment offers you the opportunity to not only live in your wealth, but be able to share it with family and friends. Creating memories and fulfilling dreams together are the greatest and most lasting gifts.





DETAILS

**4809 Lower Honoapiilani Road
Kahana, HI 96761**

Residence

7 Br • 7 Full + 3 Half Ba
8,412 Sq. Ft. Living Area
0.51 Acre
Built / Enhanced - 2009 / 2020

Ohana

1 Br • 1 Ba
700 Sq. Ft. Living Area



MARY ANNE FITCH

REALTOR® RB-15747
SENIOR PARTNER

Coldwell Banker Island Properties
International Luxury Alliance Member

808.250.1583
maryanne@soldmaui.com
soldmaui.com

1.3+ Billion in Real Estate Sales since 1988
Maui's #1 Realtor®
Real Trends #6 in Hawaii 2024



