



Make your

Selection

Edition 2025





Configurator

Configure and order your custom
USM furniture online.

USM Selection ...Whether you're looking for a sideboard, small unit, media unit or tables and storage furniture for the workspace: the USM Selection offers a carefully curated assortment of the most popular USM pieces.

With a choice of all 14 USM colours and the many possibilities, we offer you the suitable USM solution for your home and office.

- 2 Storage
- 8 Entertainment
- 12 Small units
- 18 Dining
- 20 Home office
- 26 Accessories
- 30 Colours

Storage

1



- 1 QS_E2
L/D/H: 1523/373/740 mm
with four drop-down doors
- 2 QS_C2
L/D/H: 1523/373/740 mm
with two drop-down doors
- 3 QS_M64
L/D/H: 1523/373/1090 mm
with four drop-down doors

2



3





- 4 **QS_M58**
L/D/H: 773/373/1090 mm
with one drop-down door and
dimmable light (warm white),
incl. wall anchor set
- 5 **QS_M25**
L/D/H: 773/373/915 mm
with two drop-down doors, two
divider shelves and one extension
door with metal box insert,
incl. wall anchor set
- 6 **QS_M51**
L/D/H: 1023/273/815 mm
with two drop-down doors,
incl. wall anchor set



5

Well organised
Extension doors
and divider shelves
make sorting
easier.

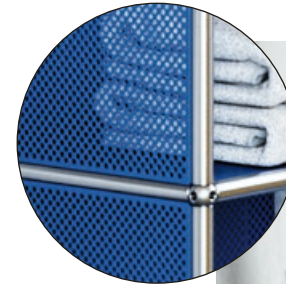




7

- 7 QS_M52
L/D/H: 523 × 373/1590 mm
with two drop-down doors
and one extension door
with metal box insert,
incl. wall anchor set
- 8 QS_G1
L/D/H: 773/373/1090 mm
with three drop-down doors,
incl. wall anchor set
- 9 QS_M56
L/D/H: 773/373/990 mm
with perforated metal panels,
three plant pots and three
watering sets, incl. wall anchor set

8



Airy design
due to perforated
metal panels



9

Entertainment

10

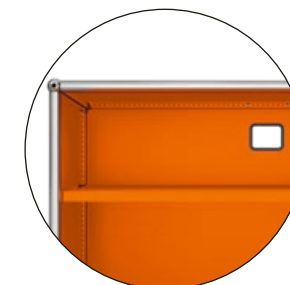


- 10 QS_M57
L/D/H: 1273/373/740 mm
with two drop-down doors,
two plant pots and two
watering sets
- 11 QS_M61
L/D/H: 1523/373/430 mm
with two drop-down doors,
one divider shelf and
one cable cut-out, on castors
with soft running surface,
two of which are lockable
- 12 QS_O2
L/D/H: 1523/373/565 mm
with two drop-down doors

11



Smart cable management
A cable cut-out in the
rear panel allows TV
and HiFi equipment to
be stored behind
a drop-down door.



12



13 QS_M59
L/D/H: 1523/373/390 mm
with two drop-down doors,
one divider shelf, one cable
cut-out and dimmable light
(warm white)



13

Small units

- 14 QS_S2
L/D/H: 773/373/740 mm
with two drop-down doors
- 15 QS_M22
L/D/H: 523/523/390 mm
- 16 QS_M21
L/D/H: 523/418/390 mm

14



15



16

- 17 QS_M53
L/D/H: 373/373/430 mm
with pull handle, on castors
with soft running surface
- 18 QS_M62
L/D/H: 773/373/740 mm
with one drop-down door





19 QS_M55
L/D/H: 523/373/565 mm
with one drop-down door
and one divider shelf

20 QS_O1
L/D/H: 773/373/565 mm
with one drop-down door

21 QS_M54
L/D/H: 523 × 373/565 mm
with one drop-down door

20



Dining

22



23



22 QS_L

L/D/H: 773/523/575 mm
with pull handle, on castors
with soft running surface,
two of which are lockable

23 QS_T69

L/D/H: 1750/750/740 mm
Laminate, pearl grey
Linoleum, nero
Fenix, Bianco Kos

Further table sizes
L/D/H: 1500/750/740 mm
L/D/H: 1250/500/740 mm
see page 23

Home office



24

25

- 24 QS_M26
L/D/H: 418/523/605 mm
with three 175-mm drawers and
counterweights, on castors
with soft running surface,
two of which are lockable



26

- 25 QS_T6
L/D/H: 1750/750/700 – 1200 mm
with mechanical height adjustment
Laminate, pearl grey
Linoleum, nero

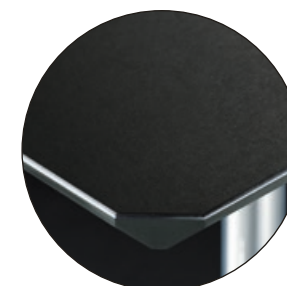
- 26 QS_K1
L/D/H: 240/335/315 mm
with five drawers

- 27 Stackable accessories
see page 27

27



Laminate, pearl grey
Linoleum, nero



Work while sitting or standing
Infinitely mechanically
height adjustable without
power consumption





28

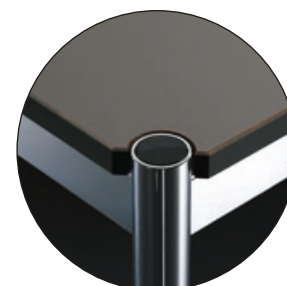
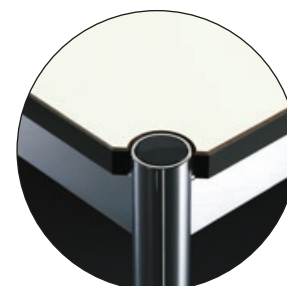
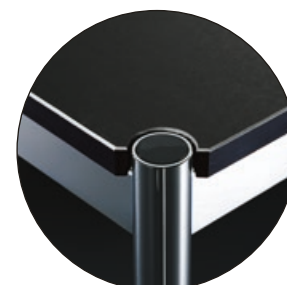
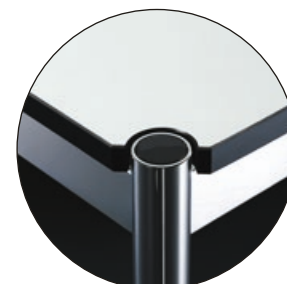
28 QS_M24
L/D/H: 773/373/1790 mm
with two drop-down doors,
incl. wall anchor set

29 QS_T8
L/D/H: 1250/500/740 mm
Laminate, pearl grey
Linoleum, nero
Fenix, Grigio Londra

30 QS_M63
L/D/H: 418/523/605 mm
with three drawers 100/175/250 mm,
incl. Inos drawer insert and counter-
weights, on castors with soft running
surface, two of which are lockable

31 QS_T59
L/D/H: 1500/750/740 mm
Laminate, pearl grey
Linoleum, nero
Fenix, Bianco Kos
Further table sizes
L/D/H: 1750/750/740 mm
see page 19

Laminate, pearl grey
Linoleum, nero
Fenix, Bianco Kos
Fenix, Grigio Londra



31



30



Get organised
with Inos trays
and inserts

32 see page 7, no. 8

33 QS_B21
L/D/H: 1168/523/740 mm
with one drop-down door
and a cable cut-out



Accessories



USM Inos box

34 DE_QS_B1.71
L/D/H: 223/322/95 mm
USM set Inos box deep,
250, with tray, light grey

35 DE_QS_B3.71
L/D/H: 223/322/190 mm
USM set Inos box high,
250, with tray, light grey

36 DE_QS_B5.71
L/D/H: 223/322/95 mm
USM set Inos box deep,
250, with longitudinal
and traverse partitions,
light grey

37 DE_QS_B7.71
L/D/H: 223/322/190 mm
USM set Inos box high,
250, with longitudinal
and traverse partitions,
light grey

38 DE_QS_B1.70
See description 34,
anthracite

39 DE_QS_B3.70
See description 35,
anthracite

40 DE_QS_B5.70
See description 36,
anthracite

41 DE_QS_B7.70
See description 37,
anthracite

42 DE_QS_B2.71
L/D/H: 453/322/95 mm
USM set Inos box deep,
500, with tray, light grey

43 DE_QS_B4.71
L/D/H: 453/322/190 mm
USM set Inos box high,
500, with tray, light grey

44 DE_QS_B6.71
L/D/H: 453/322/95 mm
USM set Inos box deep,
500, with longitudinal
and traverse partitions,
light grey

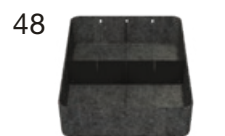
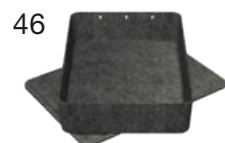
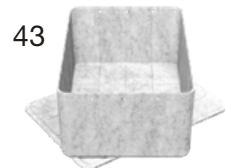
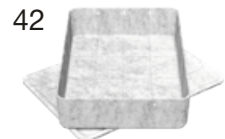
45 DE_QS_B8.71
L/D/H: 453/322/190 mm
USM set Inos box high,
500, with longitudinal
and traverse partitions,
light grey

46 DE_QS_B2.70
See description 42,
anthracite

47 DE_QS_B4.70
See description 43,
anthracite

48 DE_QS_B6.70
See description 44,
anthracite

49 DE_QS_B8.70
See description 45,
anthracite



The dimensions provided
refer to the external dimensions.
For further information,
visit www.usm.com



USM Inos drawer set

50 DE_QS_K1.24
L/D/H: 240/335/315 mm
with five drawers,
pure white

51 DE_QS_K1.29
L/D/H: 240/335/315 mm
with five drawers,
light grey

52 DE_QS_K1.30
L/D/H: 240/335/315 mm
with five drawers,
graphite black

53 DE_QS_K1.33
L/D/H: 240/335/315 mm
with five drawers,
anthracite

54 DE_QS_K1.32
L/D/H: 240/335/315 mm
with five drawers,
USM mid-grey

55 DE_QS_K1.31
L/D/H: 240/335/315 mm
with five drawers,
USM beige

56 DE_QS_K1.22
L/D/H: 240/335/315 mm
with five drawers,
USM brown

57 DE_QS_K1.25
L/D/H: 240/335/315 mm
with five drawers,
golden yellow

58 DE_QS_K1.26
L/D/H: 240/335/315 mm
with five drawers,
pure orange

59 DE_QS_K1.23
L/D/H: 240/335/315 mm
with five drawers,
USM ruby red

60 DE_QS_K1.34
L/D/H: 240/335/315 mm
with five drawers,
steel blue

61 DE_QS_K1.27
L/D/H: 240/335/315 mm
with five drawers,
giant blue

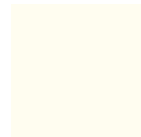
62 DE_QS_K1.28
L/D/H: 240/335/315 mm
with five drawers,
USM green

63 DE_QS_K1.36
L/D/H: 240/335/315 mm
with five drawers,
olive green



Colours

USM Haller furniture



24 pure white
RAL 9010



29 light grey
RAL 7035



32 USM mid-grey



33 anthracite
RAL 7016



30 graphite black
RAL 9011



25 golden yellow
RAL 1004



26 pure orange
RAL 2004



23 USM ruby red



27 gentian blue
RAL 5010



34 steel blue
RAL 5011



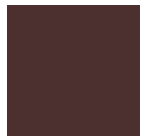
28 USM green



36 olive green
RAL 6003

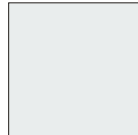


31 USM beige

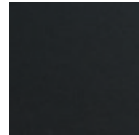


22 USM brown

USM Haller tables



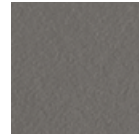
02 laminate,
pearl grey



41 linoleum,
nero



57 Fenix,
Bianco Kos



58 Fenix,
Grigio Londra

USM Kitos M table

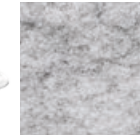
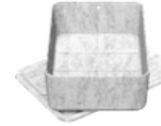


41 linoleum,
nero



02 laminate,
pearl grey

USM Inos box



71 light grey



70 anthracite

USM Inos drawer set



24 pure white
RAL 9010



29 light grey
RAL 7035



32 USM
mid-grey



33 anthracite
RAL 7016



30 graphite
black
RAL 9011



25 golden
yellow
RAL 1004



26 pure
orange
RAL 2004



23 USM
ruby red



27 gentian
blue
RAL 5010



34 steel blue
RAL 5011



28 USM
green



36 olive green
RAL 6003



31 USM
beige



22 USM
brown

USM Haller furniture with corresponding pot in terracotta or basalt



24 pure white
RAL 9010



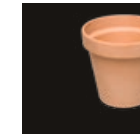
29 light grey
RAL 7035



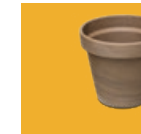
32 USM mid-grey



33 anthracite
RAL 7016



30 graphite black
RAL 9011



25 golden yellow
RAL 1004



26 pure orange
RAL 2004



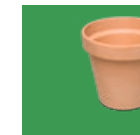
23 USM ruby red



27 gentian blue
RAL 5010



34 steel blue
RAL 5011



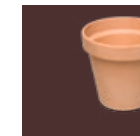
28 USM green



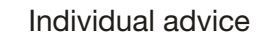
36 olive green
RAL 6003



31 USM beige



22 USM brown



www.usm.com

Switzerland

USM U. Schärer Söhne AG
Thunstrasse 55, 3110 Münsingen
Phone +41 31 720 72 72, info.ch@usm.com

Germany

USM U. Schärer Söhne GmbH
Siemensstraße 4a, 77815 Bühl
Phone +49 7223 80 94 0, info.de@usm.com

France

USM U. Schärer Fils SA, Showroom
23, rue de Bourgogne, 75007 Paris
Phone +33 1 53 59 30 37, info.fr@usm.com

United Kingdom

USM U. Schaerer Sons Ltd., London Showroom
Ground Floor, 49–51 Central St., London, EC1V 8AB
Phone +44 207 183 3470, info.uk@usm.com

USA

USM U. Schaerer Sons Inc., New York Showroom
28–30 Greene Street, New York, NY 10013
Phone +1 212 371 1230, info.us@usm.com

Japan

USM U. Schaerer Sons K.K., Tokyo Showroom
Marunouchi MY PLAZA 1 · 2F
2-1-1 Marunouchi, Chiyoda-ku, Tokyo 100-0005
Phone +81 3 6635 9420, info.jp@usm.com

All other countries
contact USM Switzerland.

www.usm.com