



MNCD2K20 Dash Cam



User Manual

1.0 Introduction

About this Manual:

Congratulations on purchasing the Minolta MNCD2K20 Digital Camera!

The contents of this manual are subject to change without notice. Note that the example screens and product illustrations shown in this User's Guide may differ somewhat from the screens and configuration of the actual camera.

Copyright:

This manual contains proprietary information protected by copyright. All rights are reserved. No part of this manual may be reproduced by any mechanical, electronic or other means, in any form, without prior written permission of Elite Brands Inc. © 2024.

Federal Communications Commission Interference Statement:

This equipment has been tested and found to comply with the limits for a Class B digital device, pursuant to Part 15 of the FCC Rules. These limits are designed to provide reasonable protection against harmful interference in a residential installation. This equipment generates, uses and can radiate radio frequency energy and, if not installed and used in accordance with the instructions, may cause harmful interference to radio communications. However, there is no guarantee that interference will not occur in a particular installation. If this equipment does cause harmful interference to radio or television reception, which can be determined by turning the equipment off and on, the user is encouraged to try to correct the interference by one or more of the following measures:

- Reorient or relocate the receiving antenna.
- Increase the separation between the equipment and receiver.
- Connect the equipment into an outlet on a circuit different from that to which the receiver is connected.
- Consult the dealer or an experienced radio/TV technician for help.

Caution:

Any changes or modifications not expressly approved by the party responsible for compliance could void the user's authority to operate the equipment.

This device complies with Part 15 of the FCC Rules. Operation is subject to the following two conditions:

- (1) This device may not cause harmful interference and
- (2) This device must accept any interference received, including interference that may cause undesired operation.

RF Exposure Warning:

This equipment complies with FCC RF radiation exposure limits set forth for an uncontrolled environment. This equipment must be installed and operated in accordance with provided instructions and must not be co-located or operating in conjunction with any other antenna or transmitter. End-users and installers must be provided with antenna installation instructions and transmitter operating conditions for satisfying RF exposure compliance.

FCC: SAR standard Value: 1.6 W/Kg, Maximal Measure: 0.4 W/kg

Camera Information:

- Do not disassemble or attempt to service the camera yourself.
- Do not expose the camera to moisture, or extreme temperatures.
- Allow the camera to warm up when moving from cold to warm temperatures.
- Do not touch and put pressure on the camera lens.
- Do not use abrasive chemicals, cleaning solvents or strong detergents to clean the product. Wipe the product with a slightly damp soft cloth.
- Do not subject the LCD screen to impact.
- To prevent the risk of fire or electric shock, do not expose the inside of this product to rain or moisture.

Precautions When Cleaning:

- Do not puncture the microphone or speaker openings with a sharp implement.
- If the inside of the camera is damaged, the waterproof performance will deteriorate.
- Do not use soap, natural detergents, or chemicals such as benzene for cleaning.

Do Not Apply Strong Impact to the Camera:

The product may malfunction if subjected to strong shock or vibration. In addition, do not touch or apply force to the lens.

Avoid Sudden Changes in Temperature:

Sudden changes in temperature, such as when entering or leaving a heated building on a cold day, can cause condensation to form inside the device. To prevent condensation, place the device in a carrying case or a plastic bag before exposing it to sudden changes in temperature.

Keep Away from Strong Magnetic Fields:

Do not use or store this device in the vicinity of equipment that generates strong electromagnetic radiation or magnetic fields. Doing so could result in loss of data or camera malfunction.

Notes About the LCD Screen:

- The LCD Screens are constructed with extremely high precision; At least 99.99% of pixels are effective, with no more than 0.01% being missing or defective. Hence, while these displays may contain pixels that are always lit (white, red, blue or green) or always off (black), this is not a malfunction and has no effect on photos recorded with the device.
- Photos viewed on the LCD screen may be difficult to see under certain lighting.
- Do not apply pressure to the LCD screen as this could cause damage or malfunction.

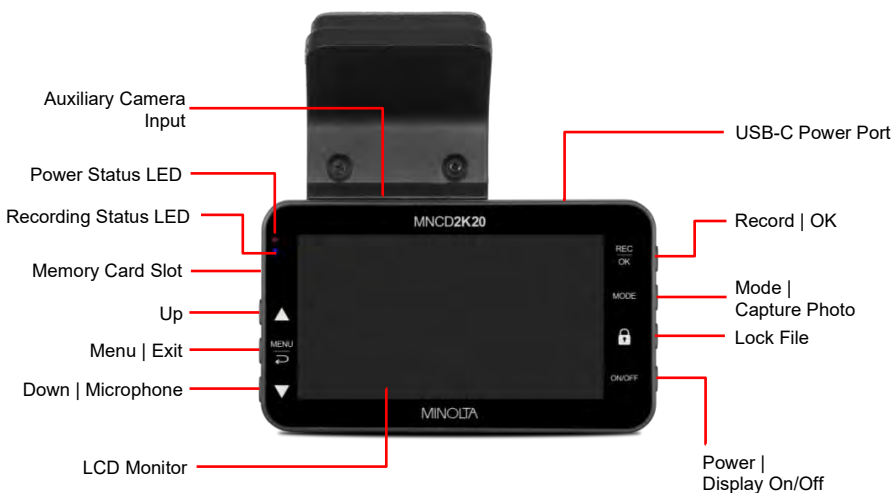
Storage:

If you do not intend to use the camera for an extended period, remove the battery and avoid storing the camera in any of the following types of locations:

- Places that are poorly ventilated or subject to humidity of over 60%
- Place exposed to temperatures above 50°C (122°F) or below -10°C (14°F).

Overview

1.1 Buttons and Operation Overview



1.2 Buttons and Operation Overview Explained

Name:	Function:
Windshield Mount	Mount used to connect your camera to your windshield
Memory Card Slot	Storage slot for inserting MicroSD memory card
Up	Button used to move Up in navigating menus
Menu Exit	Button used for accessing and exiting menus and submenus
Down Microphone	<p>In Shooting Screen: Enable or disable microphone during video recording</p> <p>In Menus: Button used to move Down in navigating menus</p>
Tilt Adjustable Lens	Lens can tilt up, down, left, and right for a full adjustable recording point of view
USB-C Power Port	Port for plugging into power
Record OK	<p>In Shooting Screen: Button to start or stop recording</p> <p>In Menus: Button to confirm a selection</p>
Mode Capture Photo	<p>Short Press: Button to capture a photo</p> <p>Long Press: Button to enter Playback mode</p>
Lock File	Button to protect a video while recording and in playback mode
Power Display On/Off	Long press and hold for 3 seconds to power on and off. While power is on, tap to to turn the display on or off.
Speaker	Built-in speaker plays button-press sounds and other video playback sounds
Reset	Button for power cycling the camera if it becomes unresponsive
Microphone	Built-in microphone to capture audio during a video recording
Auxiliary Camera Input	Input port to connect an auxiliary camera (not included)
Power Status LED	LED will illuminate red while camera is connected to power
Recording Status LED	LED will blink in blue while camera is recording video
LCD Monitor	Monitor to display live view and playback media

2.0 Using Your Camera

2.1 Memory Card Insertion and Removal

1. Ensure the camera is powered off.
2. Insert a MicroSD memory card into the memory card slot with the gold pins facing the display screen. Push the memory card in until you hear an audible click.

The MicroSD memory card can only be inserted in one way. Do not force the card in if it will not go in smoothly. If it is not inserting smoothly, then it is likely being inserted incorrectly.

3. To remove the MicroSD memory card, simply push the card in and the card will eject back out.



NOTE:

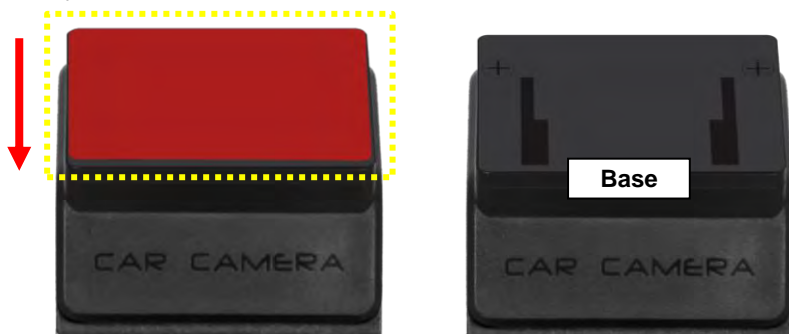
- Format the memory card before using the camera (Caution: this will erase all data on the card).
- Do not remove or insert the memory card when recording. It may damage the card or cause data loss.
- Memory card rating must be Class 10 or above.
- Maximum capacity MicroSD supported is 128GB.

2.2 Windshield Mount

The windshield mount will come already attached to your camera. To detach the entire mount assembly from your camera, simply unscrew the 2 mounting screws as shown in the diagram below. The mount assembly can now be separated from the camera.



To remove the mount plate from the mount, simply slide the plate downwards to unlock it from the base. Once unlocked, you may lift it off the base. To replace the mount plate, simply place the plate back into the locking grooves on the base, and slide the plate up into the locked position. It will click once correctly locked into place.



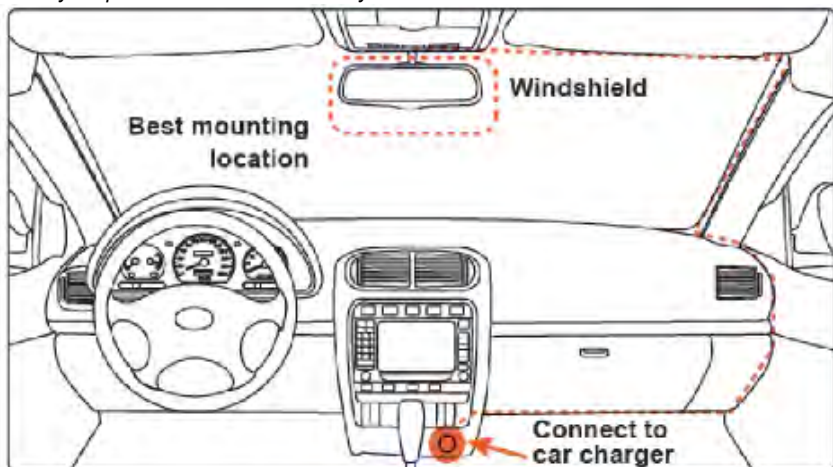
2.3 Mounting To Windshield In Vehicle

Once ready to mount your camera to a windshield, peel off the red sticky sheet to reveal the sticky mounting pad.



Apply the sticky side to the top center of the windshield. Before applying to the windshield, make sure that your windshield surface is clean and free from any dirt or debris. Then guide the included DC power cord as recommend in the figure below.

NOTE: The sticky pad will last a long time if applied to the windshield once. If you need to remove the mount and apply it back into a different position, some of the stickiness will dry out. It is best to remove the existing sticky tape and apply a new sheet. Included with your purchase is one extra sticky sheet.



2.4 Tilt Adjustable Lens

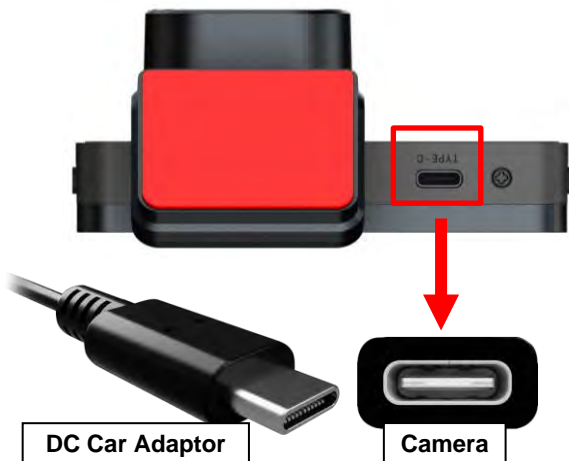
The front lens of your camera can tilt and adjust to your preferred point of view. Simply move the front lens housing in any direction until satisfied with the front view. Be sure to adjust the front lens only after mounting the camera to your windshield and it is firmly fixed in place.



3.0 Using Your Camera

3.0.1 In Car Use

Connect the included auxiliary DC power adaptor to your car's power port. Plug the USB-C plug into the camera's USB-C port. Charging will begin immediately. Please note that the camera's internal battery has a very limited capacity and is only intended for use in emergency use situations.



3.0.2 Quick Use Instructions

Simply insert the MicroSD memory card into the MicroSD card slot, and insert the auxiliary power adaptor into the camera's USB-C port and your car's power port. The camera will automatically power on and begin recording a video file.

To start or stop recording at any time, press the **RECORD/OK** button. You may also remove the auxiliary DC power adaptor at any time to automatically save a recording and power the camera off.

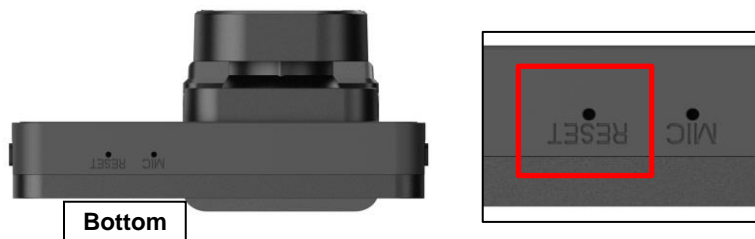
To manually stop recording, you may also press the **MENU** button. This will save the recorded file and enter the system's menu. Just mount your camera to your windshield, plug in the power and drive!

3.0.3 USB Cord / Computer Use

Connect the included USB cable to an available USB port on your computer, and connect the other end of the cable into the camera's USB-C port. The camera's battery may be charged while the camera is powered on or off.

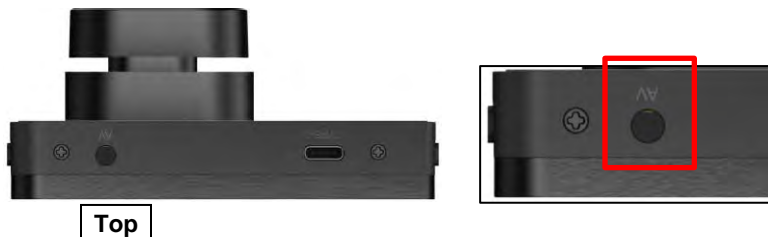
3.0.4 Reset

If your camera freezes or becomes unresponsive, press the **RESET** button on the bottom of the camera to reset and power cycle the camera. Insert a pointy object into the reset pinhole on the bottom of the camera to fully reset it. Refer to the Section 1 of the user manual's illustration.



3.0.5 Auxiliary Camera Input Port (AV 2.5mm)

An additional camera (not included) can be connected to your camera. This will allow you to record two views at the same time. The Input Port is located on the top of the camera housing under the mount. Using an auxiliary camera is optional, and is not required for normal operation of this camera.



4.0 Camera Operation

Once you have inserted the memory card and plugged your camera into a power source, your camera will automatically power on. You may also manually power your camera on or off by pressing the **POWER** button for 3 seconds.

There are 3 operation modes available for use. Follow the instructions below to enter and use any of the modes.

Capture Mode

Once your camera powers on, it will default to Capture Mode and will begin recording automatically. To start or stop recording at any time, press the **RECORD/OK** button. To manually capture video again, simply press the **RECORD/OK** button again. To capture a photo, short-press the **MODE** button.

Menu Mode

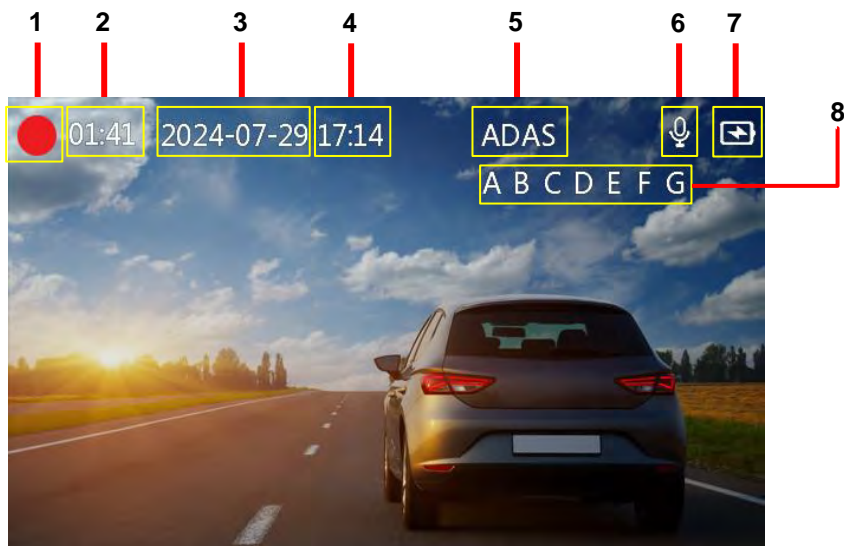
To enter Menu Mode and adjust settings, press the **MENU** button once. While in Menu Mode, you can cycle through the various submenus to adjust the camera's settings. To exit Menu Mode and revert back to Capture Mode, simply press the **MENU** button again.

Playback Mode

To enter Playback Mode for playing back your video and photo files, press and hold the **MODE** button for 3 seconds. While in Playback Mode, you can cycle your captured videos and photos. To exit Playback Mode and revert back to Capture Mode, press the **MODE** button.

First Use

4.0 Main Screen and Icons Explanation

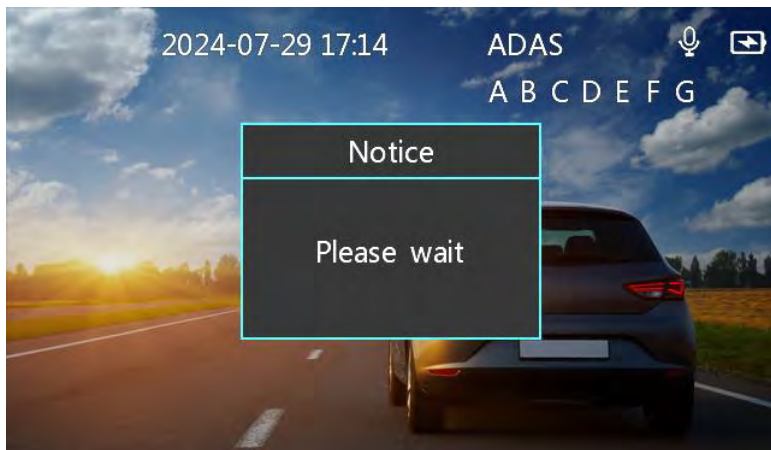


1	Recording Status
2	Recording Time Elapsed
3	System Date
4	System Time
5	A dvanced D river A ssistance S ystem Active
6	Audio Recording Status
7	Power Status
8	License Plate Imprint

4.1 Capture Mode Settings

Your camera comes preset with some user-adjustable settings to fine tune and customize how you would like your videos and photos to be captured. The settings are already optimized and preset for the easiest experience. To enter the Settings menu, press the **MENU** button.

NOTE: The settings menu cannot be accessed while the camera is recording a video file. If the camera is recording a file, you must stop recording first before the settings menu can be accessed. To stop recording at any time, press the **RECORD/OK** button. You may also press the **MENU** button. This will save the recorded file and enter the system's menu.

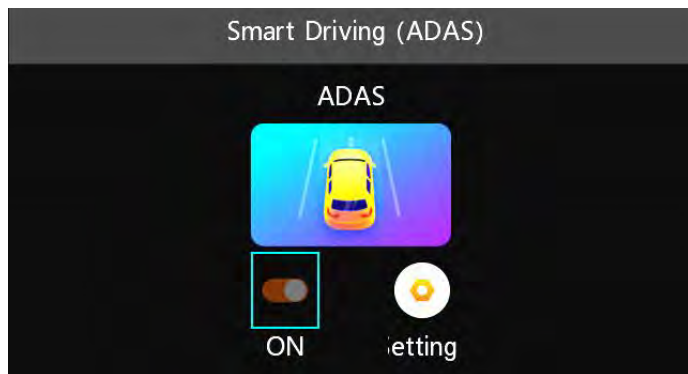


4.1.1 Smart Driving (ADAS)

This menu sets **Advanced Driver Assistance System** settings. ADAS is a system designed to warn drivers in crucial road situations. Using artificial intelligence, it monitors the vehicle's surroundings, detects potential threats, and delivers real-time voice alerts to keep the driver stay aware and cautious. Keep in mind that this does not help operate a vehicle but to help drivers promote better driving habits.

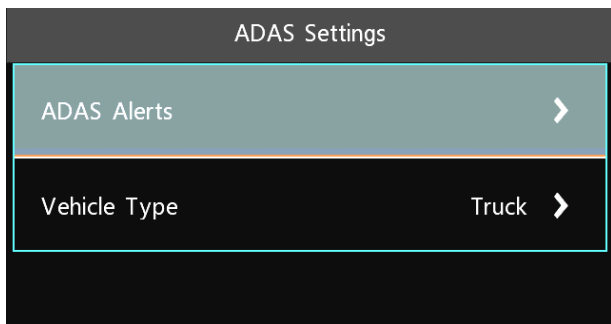
This menu is divided into several submenus which will allow you to enable/disable the ADAS alerts, and change settings related to ADAS.

1. In Capture Mode press the **MENU** button.
2. Select '*Smart Driving (ADAS)*' using the **UP** or **DOWN** buttons and press the **RECORD/OK** button to enter the submenu.
3. To enable ADAS, press the **RECORD/OK** to set *ON* or *OFF*.

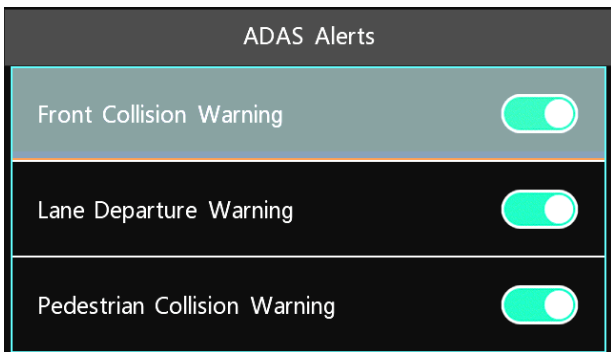


4. To continue with other ADAS settings, use the **UP** or **DOWN** buttons to select '*Settings*' and press the **RECORD/OK** button to enter the submenu.

5. Continue through the menu to select 'ADAS Alerts', and press **RECORD/OK** button to enter the submenu.



6. In this submenu, you may select which ADAS Alerts to enable/disable by selecting each alert, and pressing **RECORD/OK** button to enable/disable.

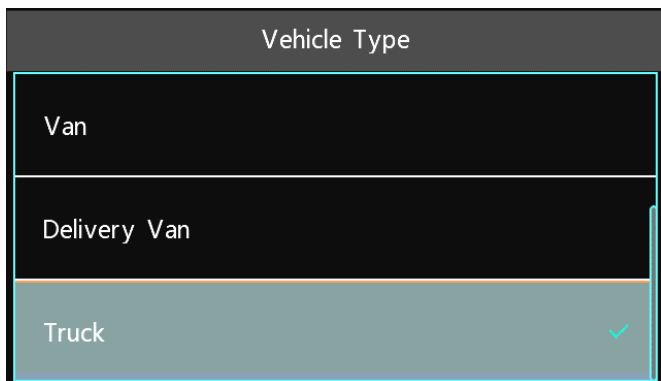


Front Collision Warning: Alerts when the camera detects an imminent collision with a vehicle or object in the forward field of view.

Lane Departure Warning: Alerts when the camera detects the vehicle drifting over traffic lines or when detecting a lane change.

Pedestrian Collision Warning: Alerts when the camera detects a pedestrian in the forward field of view. This detection will only occur at a stop or slow speed.

7. Press the **MENU** button to revert to the previous submenu.
8. Continue through the menu to select '*Vehicle Type*', and press the **RECORD/OK** button to enter the submenu.
9. You may select from *Sedan, SUV, Van, Delivery Van, and Truck*. Selecting the correct vehicle type is essential because the camera uses this setting to accurately assess the vehicle's dimensions for precise ADAS Alerts monitoring.



10. Press the **MENU** button to revert to the previous submenu.
11. Press the **MENU** button again to exit the settings menu.

4.1.2 Video Resolution

This menu sets the video resolution. The higher the resolution, the greater the video quality and the larger the file size of the video.

1. In Capture Mode press the **MENU** button.
2. Select '*Video Resolution*' using the **UP** or **DOWN** buttons and press the **RECORD/OK** button to enter the submenu.
3. You may select from *2.5K 30FPS* and *1080P 30FPS*.
4. Highlight your selection using the **UP** or **DOWN** buttons and press the **RECORD/OK** button to confirm.
5. Press the **MENU** button to revert to the previous submenu and exit the settings menu.

4.1.3 Photo Resolution

This menu sets the photo resolution. The higher the resolution, the greater the photo quality and the larger the file size of the photo. To capture a photo during a video recording, short-press the **MODE** button.

1. In Capture Mode press the **MENU** button.
2. Select '*Photo Resolution*' using the **UP** or **DOWN** buttons and press the **RECORD/OK** button to enter the submenu.
3. You may select from *16 Mega Pixels* and *12 Mega Pixels*.
4. Highlight your selection using the **UP** or **DOWN** buttons and press the **RECORD/OK** button to confirm.
5. Press the **MENU** button to revert to the previous submenu and exit the settings menu.

4.1.4 Loop Recording

This menu allows you to set a maximum duration for each video clip recorded. Once you select an option, your camera will record video clips in this time interval only. Once your selected duration recording time is reached, the camera will end the recording and begin recording a new video file seamlessly.

1. In Capture Mode press the **MENU** button.
2. Select '*Loop Recording*' using the **UP** or **DOWN** buttons and press the **RECORD/OK** button to enter the submenu.
3. You may select from *1 Minute Loop*, *3 Minute Loop*, and *5 Minute Loop*.
4. Highlight your selection using the **UP** or **DOWN** buttons and press the **RECORD/OK** button to confirm.
5. Press the **MENU** button to revert to the previous submenu and exit the settings menu.

4.1.5 Time Lapse

This menu allows you to enable an automatic capture of photos set by a time interval and duration while the vehicle is parked and off. This menu setting is the amount of time the camera will wait in between each auto capture. For example, an interval setting of "3 seconds" will set the camera to automatically capture a photo every 3 seconds.

For this function to enable properly, your camera must be powered through your vehicle's "ACC" power. Please refer to your vehicle's user manual to find which power port is connected to "ACC".

1. In Capture Mode press the **MENU** button.
2. Select '*Time-Lapse*' using the **UP** or **DOWN** buttons and press the **RECORD/OK** button to enter the submenu.
3. You may select from *OFF*, *1 Second*, *2 Seconds*, and *3 Seconds*.
4. Highlight your selection using the **UP** or **DOWN** buttons and press the **RECORD/OK** button to confirm.
5. Press the **MENU** button to revert to the previous submenu and exit the settings menu.

4.1.6 Time Lapse Duration

This menu allows you to enable an automatic capture of photos set by a time interval and duration while the vehicle is parked and off. This menu setting is the duration for how long the Time-Lapse program will run. For example, a duration setting of "12 hours" will set the camera to automatically capture photos for 12 hours and then stop.

For this function to enable properly, your camera must be powered through your vehicle's "ACC" power. Please refer to your vehicle's user manual to find which power port is connected to "ACC".

1. In Capture Mode press the **MENU** button.
2. Select '*Time-Lapse Duration*' using the **UP** or **DOWN** buttons and press the **RECORD/OK** button to enter the submenu.
3. You may select from *OFF*, *12 Hours*, *24 Hours*, and *48 Hours*.
4. Highlight your selection using the **UP** or **DOWN** buttons and press the **RECORD/OK** button to confirm.
5. Press the **MENU** button to revert to the previous submenu and exit the settings menu.

4.1.7 Audio Recording

This menu allows you to enable/disable the built-in microphone ON or OFF during a video recording. Once you select an option, your camera will either record audio within the video file, or record a video file without the audio.

1. In Capture Mode press the **MENU** button.
2. Select '*Audio Recording*' using the **UP** or **DOWN** buttons and press the **RECORD/OK** button to enable or disable the setting.
3. Press the **MENU** button to revert to the previous submenu and exit the settings menu.

4.1.8 Motion Detection

This menu allows you to enable/disable an automatic recording if movement is detected in front of the camera lens. Once recording, the camera will stop recording if no further movement is detected within a 10-second period of the last movement registered. You may also manually stop recording anytime by pressing the **OK/RECORD** button during a recording.

1. In Capture Mode press the **MENU** button.
2. Select 'Motion Detection' using the **UP** or **DOWN** buttons and press the **RECORD/OK** button to enable or disable the setting.
3. Press the **MENU** button to revert to the previous submenu and exit the settings menu.

Note: When selecting OFF, your camera will still automatically record upon startup if you power it off.

4.1.9 Collision Sensitivity

This menu allows you to set the sensitivity level for automatic recording upon collision. When triggered or when the camera thinks a collision occurred, it will automatically begin recording and the recording will be stored a "locked" icon. The video file will be locked and protected from deletion.

1. In Capture Mode press the **MENU** button.
2. Select 'Collision Sensitivity' using the **UP** or **DOWN** buttons and press the **RECORD/OK** button to enter the submenu.
3. You may select from *OFF*, *LOW*, *MEDIUM*, and *HIGH*.
4. Highlight your selection using the **UP** or **DOWN** buttons and press the **RECORD/OK** button to confirm.
5. Press the **MENU** button to revert to the previous submenu and exit the settings menu.

4.1.10 Park Mode Sensitivity

This menu allows the camera to automatically power on and record a video if the camera detects a collision while parked and is powered off. You can set the sensitivity level setting in this menu. This setting will only activate if there is sufficient battery power remaining in the camera's built-in battery. When triggered or when the camera thinks a collision occurred, it will automatically lock the recording.

1. In Capture Mode press the **MENU** button.
2. Select '*Park Mode Sensitivity*' using the **UP** or **DOWN** buttons and press the **RECORD/OK** button to enter the submenu.
3. You may select from *OFF*, *LOW*, *MEDIUM*, and *HIGH*.
4. Highlight your selection using the **UP** or **DOWN** buttons and press the **RECORD/OK** button to confirm.
5. Press the **MENU** button to revert to the previous submenu and exit the settings menu.

4.1.11 Date & Time Stamp

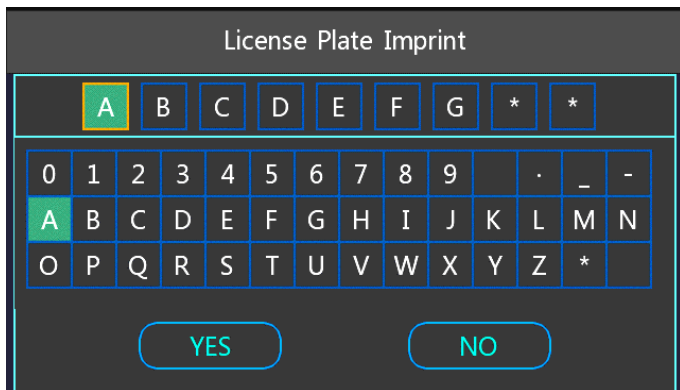
This menu setting allows you to set a date and time for display on videos and photos.

1. In Capture Mode press the **MENU** button.
2. Select '*Date & Time Stamp*' using the **UP** or **DOWN** buttons and press the **RECORD/OK** button to enable or disable the setting.
3. Press the **MENU** button to revert to the previous submenu and exit the settings menu.

4.1.12 License Plate Imprint

This menu allows set a license plate ID for imprinting onto video and photo files. The character limit is 9 character spaces.

1. In Capture Mode press the **MENU** button.
2. Select '*License Plate Imprint*' using the **UP** or **DOWN** buttons and press the **RECORD/OK** button to enter the submenu.
3. Once in this submenu, use the **UP** or **DOWN** buttons to cycle through the assorted alphanumeric characters. Once you confirm a character, press the **RECORD/OK** to set the character and proceed to the next character space.
4. Once you complete all 9 character spaces, select **YES** to confirm the license plate and to enable the imprint.
5. Press the **MENU** button to revert to the previous submenu and exit the settings menu.



4.1.13 Wide Dynamic Range (WDR)

This menu allows you to Wide Dynamic Range. WDR processes images to ensure clear recordings in bright and dark light. This allows your camera to combine multiple images at different levels of brightness to create one superior image.

1. In Capture Mode press the **MENU** button.
2. Select '*Wide Dynamic Range (WDR)*' using the **UP** or **DOWN** buttons and press the **RECORD/OK** button to enable or disable the setting.
3. Press the **MENU** button to revert to the previous submenu and exit the settings menu.

4.1.14 Speaker Volume

This menu allows you to set the volume of the speaker for alerts and buttons presses.

1. In Capture Mode press the **MENU** button.
2. Select '*Speaker Volume*' using the **UP** or **DOWN** buttons and press the **RECORD/OK** button to enter the submenu.
3. You may select from *OFF*, *LOW*, *MEDIUM*, and *HIGH*.
4. Highlight your selection using the **UP** or **DOWN** buttons and press the **RECORD/OK** button to confirm.
5. Press the **MENU** button to revert to the previous submenu and exit the settings menu.

4.1.15 Start-up Sound

This menu allows you to enable/disable the sound when powering on your camera.

1. In Capture Mode press the **MENU** button.
2. Select '*Start-up Sound*' using the **UP** or **DOWN** buttons and press the **RECORD/OK** button to enable or disable the setting.
3. Press the **MENU** button to revert to the previous submenu and exit the settings menu.

4.1.16 Language

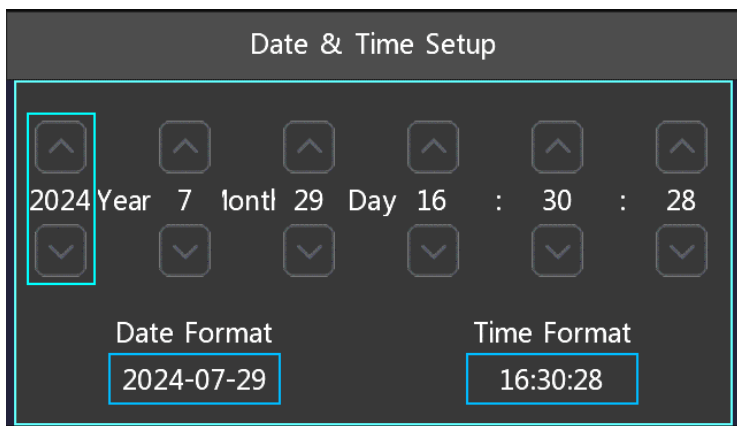
This menu allows you to set the system language for menu display.

1. In Capture Mode press the **MENU** button.
2. Select '*Language*' using the **UP** or **DOWN** buttons and press the **RECORD/OK** button to enter the submenu.
3. Highlight your selection using the **UP** or **DOWN** buttons and press the **RECORD/OK** button to confirm.
4. Press the **MENU** button to revert to the previous submenu and exit the settings menu.

4.1.17 Date & Time Setup

This menu allows set the system date and time for imprinting on your videos and photos. In this menu, you can also set the Date Format and Time Format.

1. In Capture Mode press the **MENU** button.
2. Select 'Date & Time Setup' using the **UP** or **DOWN** buttons and press the **RECORD/OK** button to enter the submenu.
3. Once in this submenu, use the **UP** or **DOWN** buttons to cycle through values for each column. Once you confirm a value, press the **RECORD/OK** to set the value and proceed to the next column setting.
4. Once you complete all of the settings, press the **MENU** button to save.
5. Press the **MENU** button to revert to the previous submenu and exit the settings menu.



4.1.18 Format Memory Card

This menu allows you to erase all video, photos, and data stored on your memory card.

NOTE: This will delete all of the media stored on your memory card and cannot be undone.

1. In Capture Mode press the **MENU** button.
2. Select 'Format Memory Card' using the **UP** or **DOWN** buttons and press the **RECORD/OK** button to enter the submenu.
3. You may select from Yes and No.

4. Highlight your selection using the **UP** or **DOWN** buttons and press the **RECORD/OK** button to confirm.
5. Press the **MENU** button to revert to the previous submenu and exit the settings menu.

4.1.19 Reset to Default

Factory default settings can be restored in this menu. This function will only restore all of the menu's settings back to factory default settings and will not delete the media stored on the memory card.

1. In Capture Mode press the **MENU** button.
2. Select '*Reset to Default*' using the **UP** or **DOWN** buttons and press the **RECORD/OK** button to enter the submenu.
3. You may select from *Yes* and *No*.
4. Highlight your selection using the **UP** or **DOWN** buttons and press the **RECORD/OK** button to confirm.
5. Press the **MENU** button to revert to the previous submenu and exit the settings menu.

4.1.20 Firmware Version

This submenu displays the firmware and device details of your camera and no settings can be adjusted here

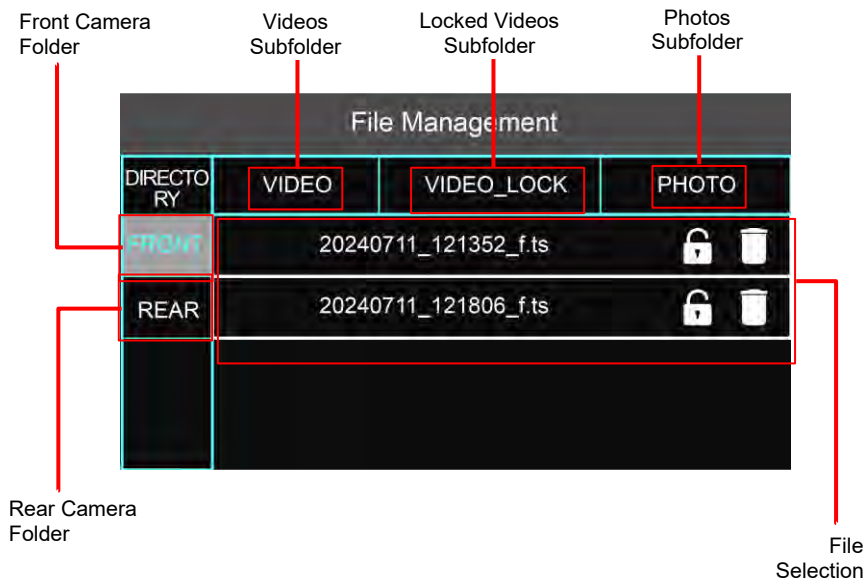
1. In Capture Mode press the **MENU** button.
2. Select '*Firmware Version*' using the **UP** or **DOWN** buttons and press the **RECORD/OK** button to enter the submenu.
3. Press the **MENU** button to revert to the previous submenu and exit the settings menu.

5.0 Playback

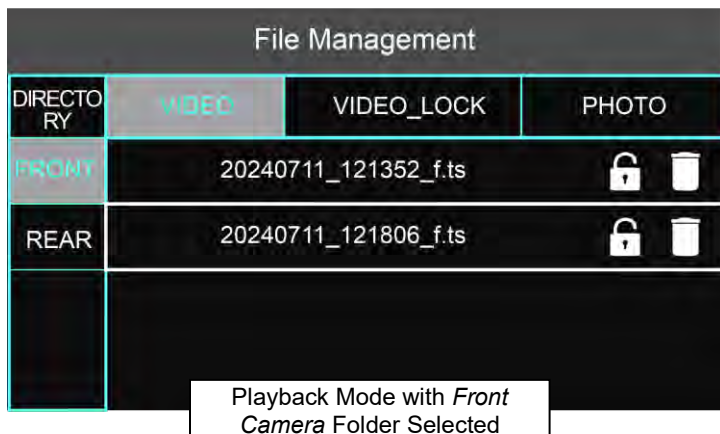
Playback mode will allow you to review all of your captured videos and photos. To enter **Playback** mode, press and hold the **MODE** button for 3 seconds. To exit Playback Mode and revert back to Capture Mode at any time, press the **MENU** button.

The Playback mode screen is an interactive menu organized in a way with different folders containing files for playback. To navigate this screen, use the **UP**, **DOWN**, **RECORD/OK**, **MENU**, and **MODE** buttons.

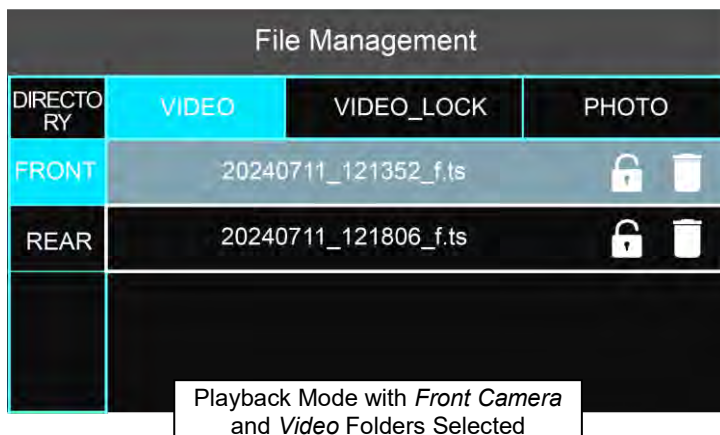
To select a file for playback review, first select the camera module. You may select from *FRONT* or *REAR*. Note that *REAR* will only contain files if you connect an auxiliary camera to the AV Input Port (not required).



To select a camera module, use the **UP** and **DOWN** buttons to cycle between *FRONT* or *REAR*. Once you highlight a camera module, press the **RECORD/OK** button to enter that subfolder.

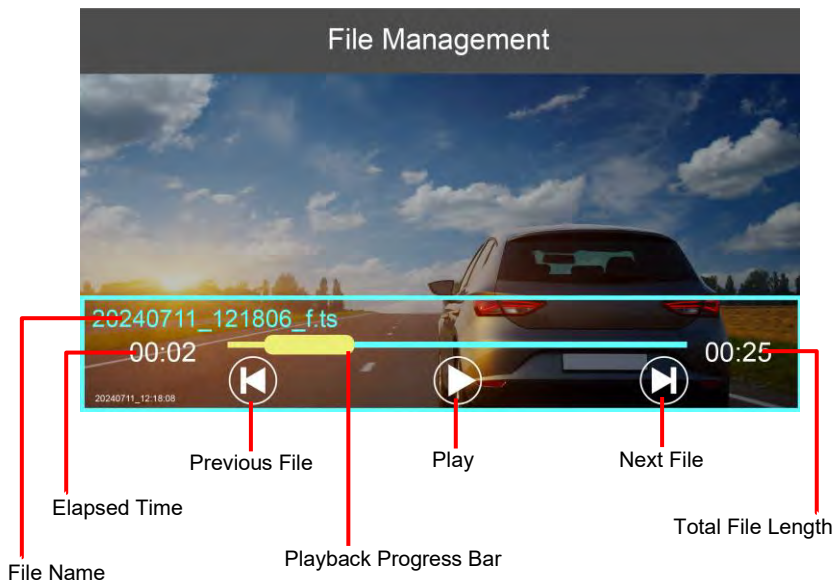


After selecting and entering a camera module folder, now select a file type folder. You may select from *VIDEO*, *VIDEO_LOCK*, and *PHOTO*. Use the **UP** and **DOWN** buttons to cycle between the folders and press the **RECORD/OK** button to enter that subfolder. To enter a file for playback, use the **UP** and **DOWN** buttons to cycle between files and press the **RECORD/OK** button to enter the highlighted file.



5.0.1 Playback Video Screen

Once you've selected a file for playback, you'll be presented with the Playback screen below. Playback will begin automatically.



Play/Pause

Once you enter a file for playback, it will play automatically. To pause playback, press the **RECORD/OK** button. To play again, press the **RECORD/OK** button again.

Previous/Next

To cycle through to previous or the next files during playback, press the **UP** and **DOWN** buttons.

Delete/Lock

To delete or lock a file from deletion, highlight a video file in the playback screen and press the **MENU** button. You may select from *Delete Current File* and *Lock Current File*. Highlight your selection and press the **RECORD/OK** button to confirm.

Exit/Go Back

To go back to a previous screen or exit, press the **MODE** button.

6.0 Transferring Media to PC

To transfer your videos and photos to a PC, remove the memory card from your camera and insert the memory card into the included USB MicroSD Card Reader.



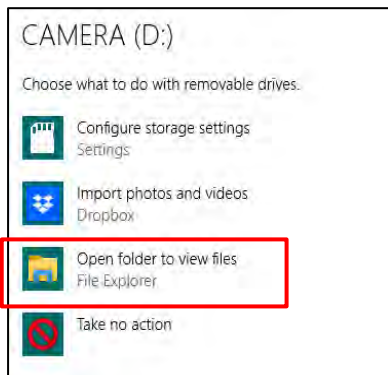
Then insert the USB MicroSD Card Reader into a USB port on your computer.



1. Once you insert the USB MicroSD Card Reader, you should see the **AutoPlay** window pop up. Click the **AutoPlay** box in the bottom-right corner of your computer screen.



2. Select **Open folder to view files**. This will open the File Explorer. You may need to scroll down to find this option.

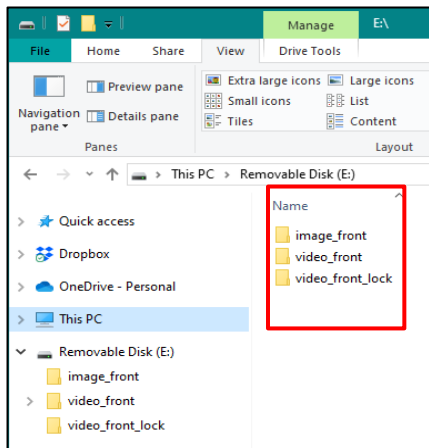


Alternatively, you can open this folder manually. Right-click the Start menu and click **File Explorer**. Click **This PC** listed on the left panel, and then find the drive of your memory card.

3. Similarly to Playback Mode on your camera, the memory card will store all of your files in a folder-like structure. Click **video_front** to access video files from the front main camera, **image_front** to access photos from the front main camera, and **video_front_lock** for locked videos from the front main camera.

Select the files you want to transfer. You can transfer individual files, or press **CTRL + A** on your keyboard to select all the files in the folder.

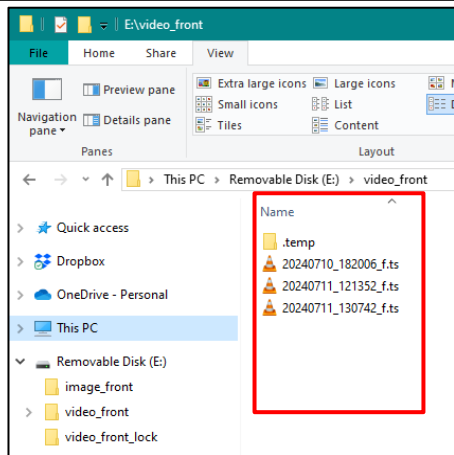
To select multiple files, hold **CTRL** and click each file.



4. Drag the files to a new location on your PC. You can drag the files into the **Videos** folder, or you can create a new folder on your PC.

The amount of time it takes to transfer will depend on the number of files being copied, the files sizes, and your computer's specifications.

If you want to delete the files from your camera's memory card, wait for the files to finish transferring to your computer. Return to the memory card's folder and press **CTRL + A** to select all the files. Right-click the files, then click **Delete**.



7.0 Technical Specifications

Model Number	MNCD2K20
LCD Display Screen	3.0 Inch LCD Monitor
Field of View	Super wide angle; 140 Degrees
Video Resolution	2.5K 30FPS • 1080P 30FPS
Photo Resolutions	16 Mega Pixels • 12 Mega Pixels
File Format	Picture: JPEG, Video: TS
ADAS	Lane Departure Warning • Front Collision Warning • Pedestrian Collision Warning
Voice Alerts	For ADAS
Wide Dynamic Range	On • Off
Loop Recording	1 Minute • 3 Minutes • 5 Minutes
Collision Auto Recording	Off • Low • Medium • High
Motion Detection Recording	On • Off
Time & Date Imprint	On • Off
License Plate Imprint	On • Off
Audio Recording	On • Off
Parking Mode	Off • Low • Medium • High
Speaker Volume	Off • Low • Medium • High
Time Lapse	Off • 1 Second • 2 Seconds • 3 Seconds
Recording Media	MicroSD • MicroSDXC; Maximum: 128GB
Ports	USB-C Input • AV 2.5mm (Aux. Camera Input)
Built-in Battery	3.7V 200mAh - for use as a backup power source during power outage



MINOLTA®

Minolta is a registered trademark of JMM Lee Properties, LLC and is used in the United States by Elite Brands Inc. under license.

40 Wall Street, 61st Floor, New York, NY 10005 USA

www.minoltadigital.com • www.elitebrands.com

Copyright © 2024 Elite Brands Inc.





MINOLTA®

MNCD2K20
Dash Cam