



MODEL KAWASAKI Z 750 R

YEAR 2011 - 2014

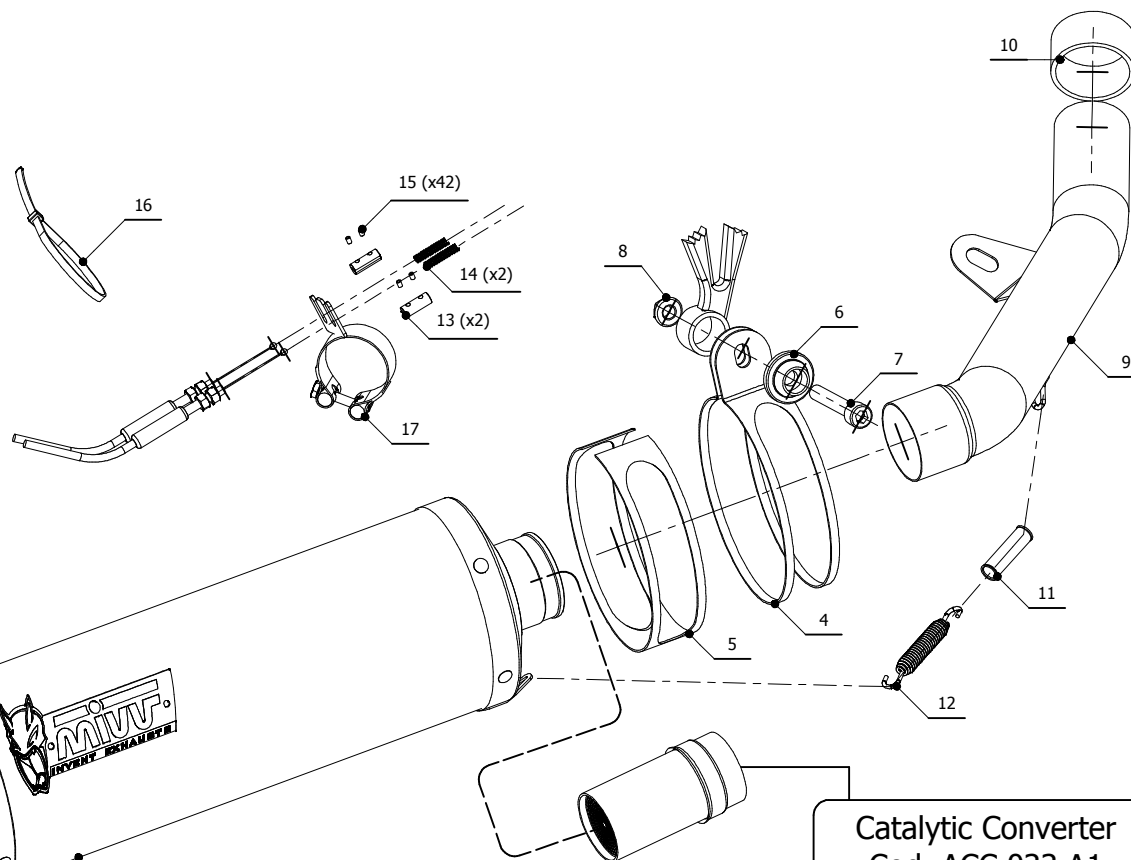
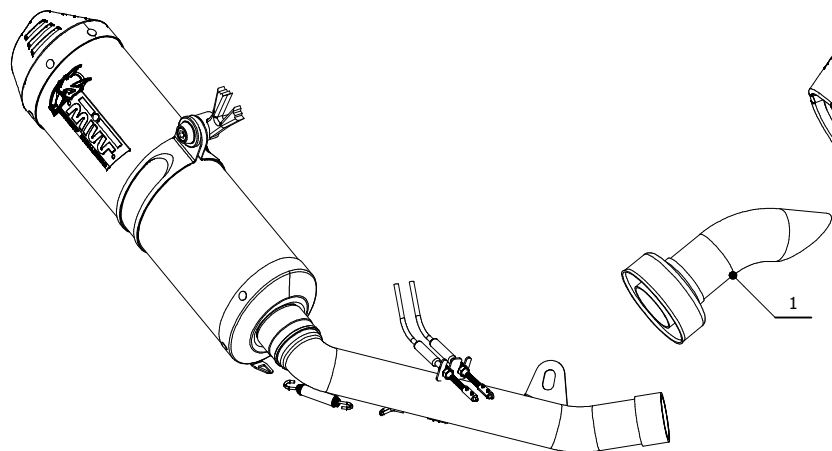
LINE SLIP ON

MUFFLER OVAL CARBON CAP

SCHEMATIC

ELENCO PARTI / PARTS LIST

#	QTÀ / QTY	DESCRIZIONE / DESCRIPTION	CODICE / CODE
1	1	DB killer / DB killer	50.DK.020.0
2	1	Tappo in gomma / Rubber stopper	50.73.266.1
3	1	Silenziatore / Muffler	OVAL CARBON CAP
4	1	Staffa / Bracket	50.SS.002.0
5	1	Protezione in gomma / Rubber protection	50.73.041.1
6	1	Rondella alluminio / Aluminium washer	50.73.120.1
7	1	Vite M10x60 / Screw M10x60	50.73.135.1
8	1	Dado M10 flangiato / Flanged nut M10	50.73.332.1
9	1	Tubo di raccordo / Link pipe	9773K028S2
10	1	Guarnizione in grafite / Graphite bush	50.72.49.55.29
11	1	Tubo in gomma per molla / Rubber pipe for spring	50.73.210.1
12	1	Molla lunga / Long spring	50.71.080.1
13	2	Morsetti in alluminio / Aluminium clamps	50.73.138.1
14	2	Molla / Spring	50.73.142.1
15	4	Grani M3 / Grub screws M3	50.73.140.1
16	1	Fascetta in nylon / Nylon clamp	50.73.360.1
17	1	Fascetta passacavi / fairlead clamp	50.SS.139.0



Catalytic Converter
Cod. ACC.033.A1
Optional for K.028.LEC - K.028.LNC
Included in K.028.KEC - K.028.KNC

APPLICAZIONI / APPLICATIONS

CODICE / CODE	SILENZIATORE / MUFFLER	TUBO / PIPE	FASCETTA / CLAMP	NOTE
K.028.LEC	CARBONIO (COPPA CARBONIO) / CARBON (CARBON CAP)	INOX / ST.STEEL	INOX / ST.STEEL	CATALYTIC CONVERTER NOT INCLUDED
K.028.LNC	TITANIO (COPPA CARBONIO) / TITANIUM (CARBON CAP)	INOX / ST.STEEL	INOX / ST.STEEL	CATALYTIC CONVERTER NOT INCLUDED
K.028.KEC	CARBONIO (COPPA CARBONIO) / CARBON (CARBON CAP)	INOX / ST.STEEL	INOX / ST.STEEL	CATALYTIC CONVERTER INCLUDED
K.028.KNC	TITANIO (COPPA CARBONIO) / TITANIUM (CARBON CAP)	INOX / ST.STEEL	INOX / ST.STEEL	CATALYTIC CONVERTER INCLUDED

