

# SECONDARY / FUEL MODULE



## PARTS LIST

- 1 Secondary fuel Module
- 1 CAN cable
- 1 CAN termination plug
- 1 Installation Guide
- 2 Velcro
- 1 Alcohol swab
- 1 CD

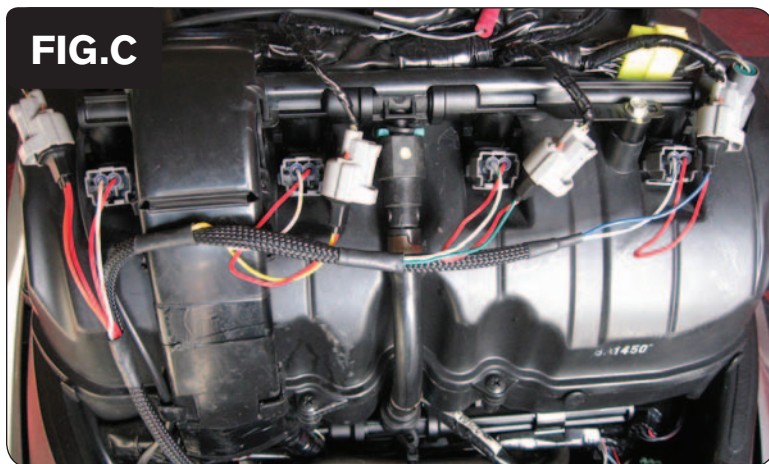
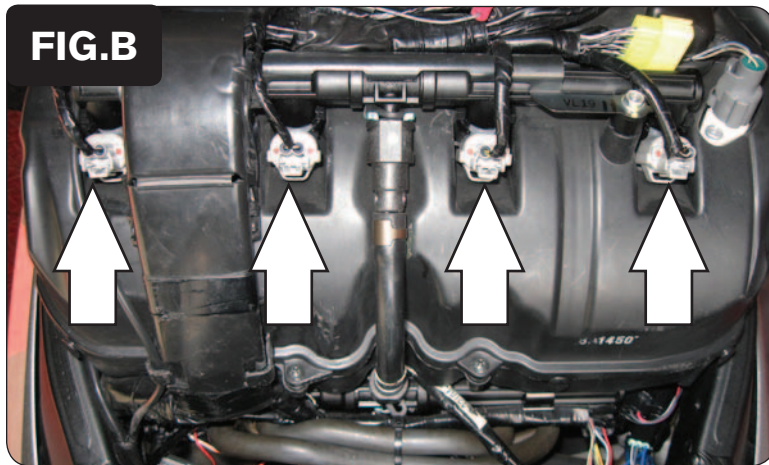
**2007-2011 Honda CBR600RR**  
**2008-2011 Honda CBR1000RR**

Installation Instructions

**PLEASE READ ALL DIRECTIONS BEFORE STARTING INSTALLATION**

**Dynojet**

2191 Mendenhall Drive North Las Vegas, NV 89081 (800) 992-4993 [www.powercommander.com](http://www.powercommander.com)



SFM-1 [www.powercommander.com](http://www.powercommander.com)

- 1 Remove the main seat and the passenger seat.
- 2 Remove the fuel tank cover.
- 3 Lift the fuel tank up or remove.
- 4 Mount the SFM in the tail section next to the PCV using the supplied velcro. Make sure to clean both surfaces with the alcohol swab before attaching.
- 5 Plug the CAN cable into 1 of the ports of the SFM and the other end into 1 of the ports of the PCV.
- 6 Plug the CAN termination plug (plastic) into any one of the remaining open ports of the SFM or PCV.

- 7 Route the SFM harness down the left side of the bike.
- 8 Unplug the stock wiring harness from the UPPER injectors (Fig. B).

- 9 Plug the SFM harness in-line of the stock wiring harness and each injector (Fig. C).

SFM harness:

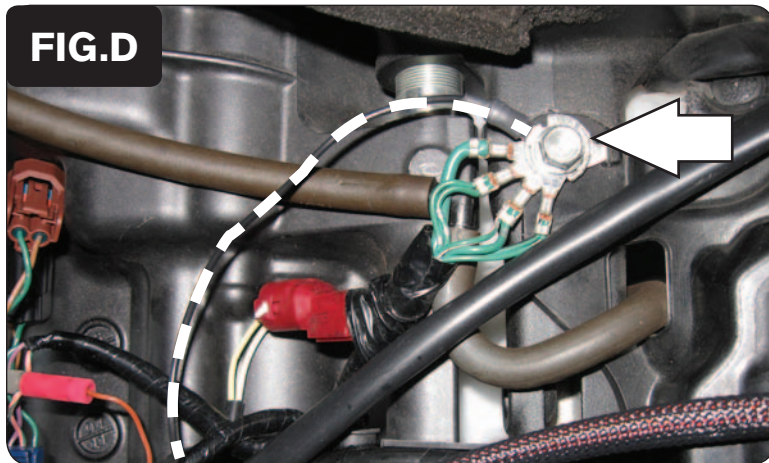
ORANGE - cylinder #1

YELLOW - cylinder #2

GREEN - cylinder #3

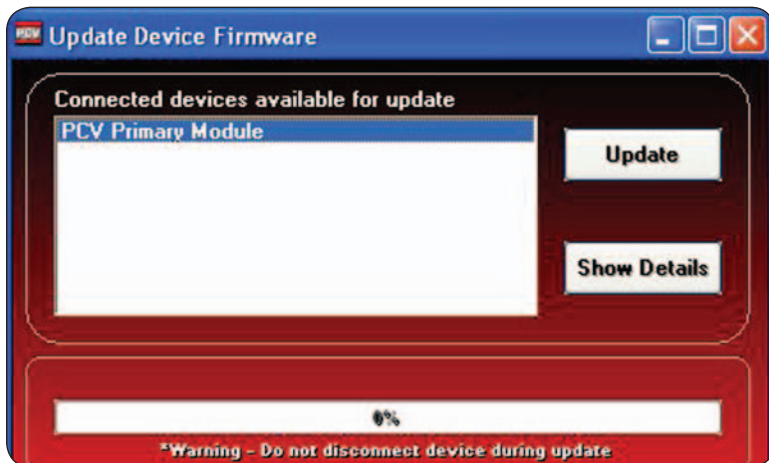
BLUE - cylinder #4





- 10 Attach the ground wire of the SFM to the stock common ground location underneath the fuel tank (Fig. D)
- 11 Reinstall fuel tank and bodywork.

*There are two wires coming out of the SFM harness (near the enclosure) that will not be used unless you are also using the Ignition Module. Refer to the instructions of the Ignition Module for directions.*



### \*\*\*IMPORTANT NOTICE\*\*\*

To use the SFM your PCV may need to be updated. The PCV needs to have firmware 1.4.0 or higher installed. To install this firmware you also need to be using software version 1.0.3.1 or higher. Both the software and firmware is on the included CD. It can also be found at, [http://www.powercommander.com/powercommander/Downloads/powercommander\\_v\\_downloads.aspx](http://www.powercommander.com/powercommander/Downloads/powercommander_v_downloads.aspx)

To update your firmware go to Power Commander Tools - Update Firmware. Click on PCV Primary Module and then click on Update. This will bring up a window so that you can search for the firmware file. Either browse the CD or bring up the file if you have already saved it to your computer.

The SFM needs to be added to the PCV network. To do so connect a USB cable to the PCV and another USB cable to the SFM. Open the PCV control center software and it will add the SFM to the network. You are now able to use the SFM.

The SFM is shipped in BASIC mode. This means that you will have 1 Fuel table in the software. This fuel table controls the lower set of injectors and upper set of injectors simultaneously. Whatever value is entered in a cell will automatically be put into the corresponding cell for the upper injectors.

If you put the SFM in ADVANCED mode you will have 2 Fuel tables. This allows a separate fuel table for the upper injectors if desired.