



MOUNTING INSTRUCTIONS

2321-0140 MOUNTING KIT, SPORTSHIELD YAMAHA V-STAR 950 DETACHABLE

! WARNING

1. During installation, make sure that the fairing / windshield and hardware do not interfere with any cables or wiring when the forks are turned all the way in either direction. Also make sure, through the full range of adjustment, that the fairing / windshield and hardware do not hit the gas tank.
2. This is a detachable fairing / windshield, ALWAYS make sure the locking mechanism is fully engaged after installing the fairing / windshield.
3. The improper installation of this kit and related components could result in serious injury or death.

Additional tools required, that are not included in this kit. Thin blade screwdriver to pry-up trim topper.

1. Cover gas tank and front fender with towels to avoid damage during installation.

2. Install the windshield mounting plates onto the windshield, using the bolts that are pre-assembled on the mounting plates. The Santoprene grommets should be inserted through the holes in the windshield so that the flat round part of the grommet lies flat on each side of the plastic. ***Tabs point in towards the headlight.*** (see figure 1)

3. Locate and remove the two trim toppers, located on the upper triple tree. (see Figure 2)

4. Using a 4mm Allen wrench remove the lower Turn Signal trim. *Take care not to loose the small Brass Bushings.* Also remove both Turn Signals with a 5mm Allen wrench. (See Figure 2)

5. Install throttle side bracket by loosely installing new 10mm x 20mm SS Button Head Bolt with one washer in front and two washers on back in upper triple tree as shown in Fig 3, Screw, washer, bracket then two washers.

6. Install Turn Signal and lower Bracket using new 8mm Socket Head Cap Screw with Spacer and washer in this order; Screw, washer, bracket, spacer and through Turn Signal and loosely tighten into lower triple tree. Tighten both upper and lower screw. (See figure 3) Repeat steps 5 and 6 on Clutch side.

7. Install the fairing by placing the lower slots into the lower mounting bushings. Slip the upper slots into the upper mounting bushings and gently but firmly seat the slots into place. Lock the locking mechanism into place. (see figure 4)

8. Tighten all mounting bolts. Adjust the height, angle and alignment of the fairing and tighten ***ALL*** bolts.

Note: This is a detachable fairing, ALWAYS make sure the Locking Mechanism is Fully Engaged after installing the fairing! (see figure 4)

CAUTION

IMPORTANT CARE AND CLEANING INSTRUCTIONS

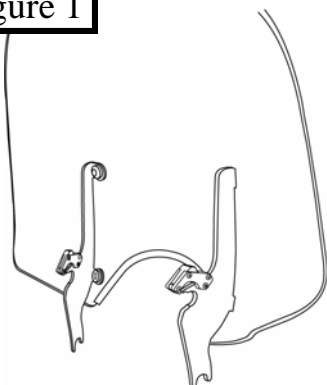
Memphis Shades Fairings and Loweres are made of Lucite® acrylic, and will last for years with proper care. Clean your fairing with plenty of soapy water — mild dishwashing liquid is best — and a soft cotton cloth. Use your bare hand to feel and dislodge bugs, or cover with a wet soapy towel and let it soak. Don't use paper towels and don't scrape with anything. Small scratches can be removed with NOVUS # 2.

NEVER use any glass cleaning products, petroleum based chemicals, or cleaning agents with ammonia, bleach or any other harsh chemicals. This includes (but not limited to) RainX, brake fluid, acetone, paint thinner, benzene and gasoline. "If it hurts your nose, it will hurt the plastic."

Glass cleansing agents will cause severe damage to your fairing, and will void your warranty.

NOTE: At certain times of the day the Sunlight can reflect off the curvature of a fairing and cause extreme heat build-up on motorcycle instruments and instrument panel. Take care when parking. Park facing the sun, place an opaque object over the instruments or adjust the fairing to avoid reflections.

Figure 1



Trim topper

Figure 2

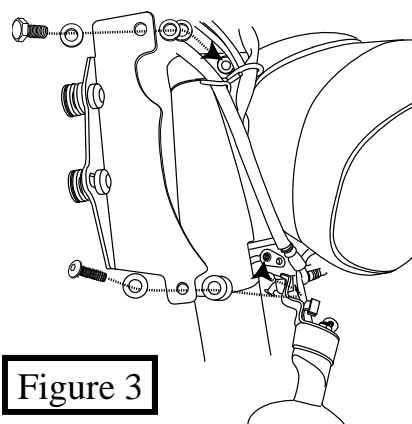
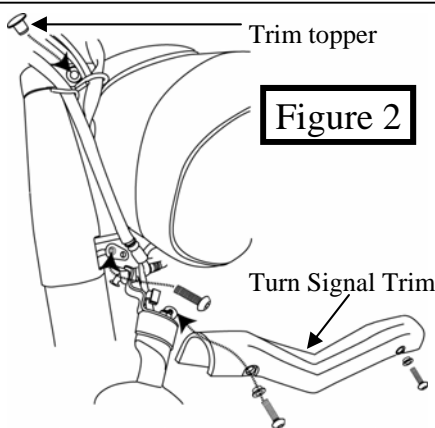


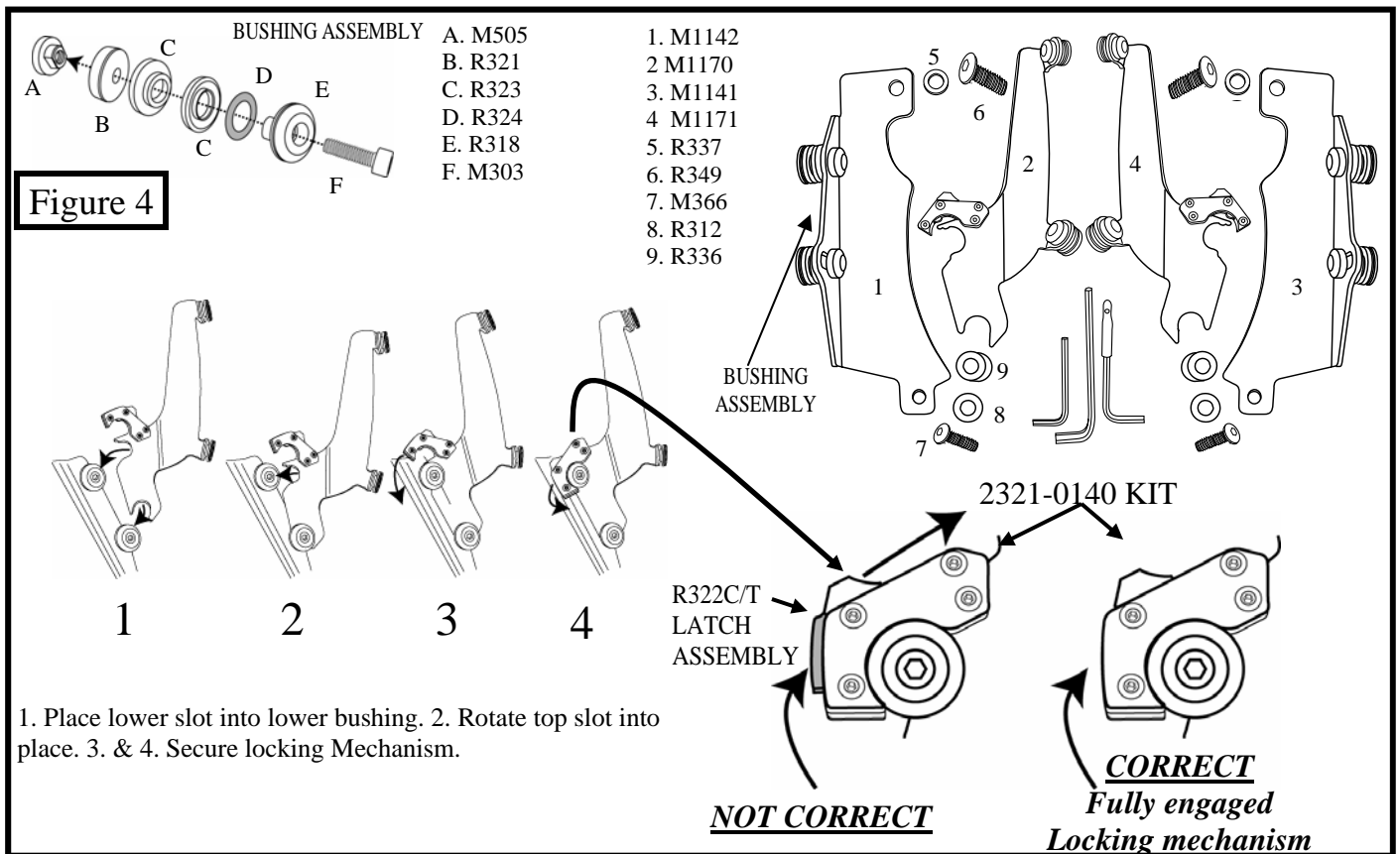
Figure 3



MOUNTING INSTRUCTIONS

2321-0140 MOUNTING KIT, MS BATWING YAMAHA V-STAR 950 DETACHABLE,

Part#	Description	Qty	Part#	Description	Qty
M1170	Right Plate Assembly	1	K1917	Mounting Instructions	1
M1171	Left Plate Assembly	1	R324	#207 EPDM O-Ring	4
M1141	Left 1300 V-Star Bracket	1	R321	1" Recessed Spacer	4
M1142	Right 1300 V-Star Bracket	1	M303	1/4"-20x3/4" Socket Head Cap Screw	4
R349	10mm x 20mm SS Button Head Bolt	2	M505	Button Nut	8
R337	10mm SS Spacer	6	R322C	Clutch Side Latch Assembly	1
M366	8mm x 30mm Socket Head Cap Screw	2	R322T	Throttle Side Latch Assembly	1
R312	8mm SS Flat Washer	2	R334	6-32x3/8" Flat Head SS Screw	8
R336	3/4" x 3/8" Lower Bolt Spacer	2	R326	SS Spring	2
R323	Bushing Assembly (2 Part)	4	M310	3/16" Short Arm Allen Wrench	1
R318	1" Socket Shoulder Washer	4	M313	3/16" Allen Wrench Cover	1
M504	Socket Shoulder Washer	4	M312	4mm Short Arm Allen Wrench	1
M543	Santoprene Grommet	4	R306	5mm Long Arm Allen Wrench	1
M302	1/4"-20x1/2" SS Socket Head Cap Screw	4	M311	6mm Short Arm Allen Wrench	1



Memphis Shades warrants all product components, metal and plastic, against defects in materials and workmanship for 24 months.

FOR PARTS AND WARRANTY HELP, CONTACT:
 MEMPHIS SHADES
 P. O. Box 429
 Rossville, TN 38066
 (901) 853-0293

Visit us on the web at www.memphisshades.com or
 you can also reach us by email:
customerservice@memphisshades.com