



Part No. 2321-0253

MEK1974

REVISION 0

Mounting Kit, Black
Bullet FX Fairing
Phantom

Aluminum parts are electrocoated (E-coated)
for durability and weather resistance.

Before assembly, read Warnings inside



WARNING

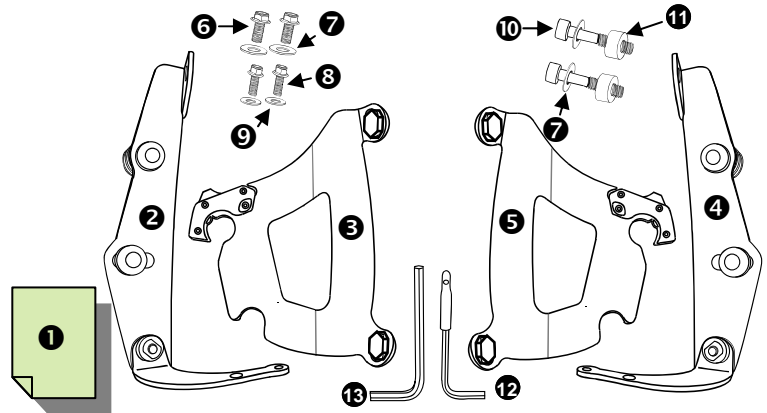
1. During installation, make sure that the fairing and hardware do not interfere with any cables or wiring when the forks are turned all the way in either direction. Also make sure, through the full range of adjustment, that the fairing and hardware do not hit the gas tank.
2. This is a detachable fairing, ALWAYS make sure the locking mechanism is fully engaged after installing the fairing.
3. The improper installation of this kit and related components could result in serious injury or death.



CAUTION

1. Memphis Shades fairings are made from Lucite® acrylic, and will last for years with proper care. Clean your fairing with plenty of soapy water (mild dishwashing liquid is best) and a soft cotton cloth. Use your bare hands to feel and dislodge bugs, or cover with a wet, soapy towel and let it soak. Don't use paper towels and scrape with anything. Small scratches can be removed with NOVUS #2.
2. Never use any glass cleaning products, petroleum based chemicals, or cleaning agents with ammonia, bleach or any other harsh chemicals. This includes (but not limited to) RainX, brake fluid, acetone, paint thinner, benzene and gasoline. "If it hurts your nose, it will hurt the plastic."
3. Glass cleansing agents will cause severe damage to your fairing, and will void your warranty. For care and cleaning we recommend using **Memphis Shades All Kleer**, a unique cleaner/polish, bug remover and rain repellent that leaves a super slick surface that makes the next cleaning even easier.
4. At certain times of the day the Sunlight can reflect off the curvature of a fairing and cause extreme heat build-up on motorcycle instruments and instrument panel. Take care when parking. Park facing the sun, place an opaque object over the instruments or adjust the fairing to avoid reflections.

1. Kit Contents



Re	Code	Description	Qty
①	I1974	Mounting Instructions	1
②	M1128EB	Throttle side bracket assembly, black	1
③	M1520EB	Throttle side plate assembly, black	1
④	M1127EB	Clutch side bracket assembly, black	1
⑤	M1519EB	Clutch side plate assembly, black	1
⑥	R300	Hex head screw (8mm x 16mm)	2
⑦	M321	Flat washer (5/16")	2
⑧	R301	Hex head screw (6mm x 16mm)	2
⑨	R302	Flat washer (1/4")	2
⑩	M320	Socket head cap screw (8mm x 45mm)	2
⑪	M591	Spacer	2
⑫	M310	Short arm allen wrench (3/16")	1
⑬	M311	Short arm allen wrench (6mm)	1

2. Mounting Instructions

Additional tools required, that are not included in this kit. 7/16" or 11mm wrench, 1/4" drive 8, 10, 13mm sockets and ratchet.

1. Cover gas tank and front fender with towels to avoid damage during installation.

2. Install the Mounting plate assemblies ③ and ⑤ onto the fairing, using the bolts that are pre-assembled on the Mounting plate assemblies.

The Santoprene grommets should be inserted through the holes in the fairing so that the flat round part of the grommet lies flat on each side of the plastic. Tabs point in towards the headlight. (Fig. 1)

3. On the Throttle side, locate the two bolts on the lower triple tree that secure the Fork Tins. Using a ratchet with an 8mm and 10mm socket, remove the two bolts.

Memphis Shades warrants all product components, metal and plastic, against defects in materials and workmanship for 24 months.

For Parts and Warranty Help, Contact:

Memphis Shades, Inc.

P.O. Box 429

Rossville, TN 38066

(901) 853 0293

Visit us on the web at www.memphisshades.com or you can also reach us by email:

customerservice@memphisshades.com

Fig. 3

**Mounting Kit, Black
Bullet FX Fairing
Phantom**

2. Mounting Instructions, continued

4. Using the 6mm Allen wrench provided, remove the upper triple tree pinch bolt.

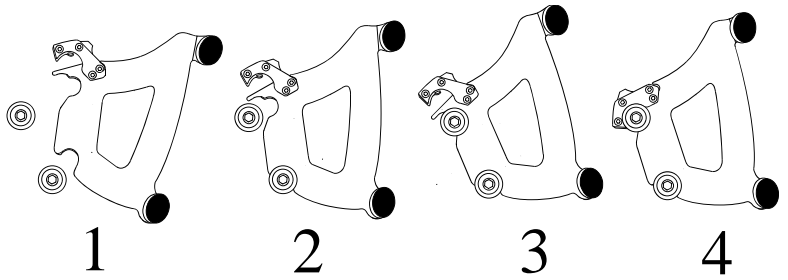
5. Using a 10mm and 13mm socket, loosely install the lower bracket using the new bolts and washers provided.

Next, slip the spacer behind the upper bracket mounting hole and insert the new socket head cap screw with new washer through the bracket, through the spacer and loosely tighten all three bolts. (Fig 2) repeat steps 3 - 5 on the Clutch side. *Note: You will tighten these bolts after the fairing is installed on to the bushings.*

6. Install the fairing by placing the lower slots into the lower mounting bushings. Slip the upper slots into the upper mounting bushings and gently but firmly seat the slots into place. Lock the locking mechanism into place. (Fig 3)

7. Tighten all mounting bolts. Adjust the height, angle and alignment of the fairing and tighten **ALL** bolts.

Note: This is a detachable fairing, ALWAYS make sure the Locking Mechanism is Fully Engaged after installing the fairing!



1. Place lower slot into lower bushing.
2. Rotate top slot into place.
3. Secure locking Mechanism.
4. Loosen Allen Bolt to adjust angle, then re-tighten Allen Bolt.

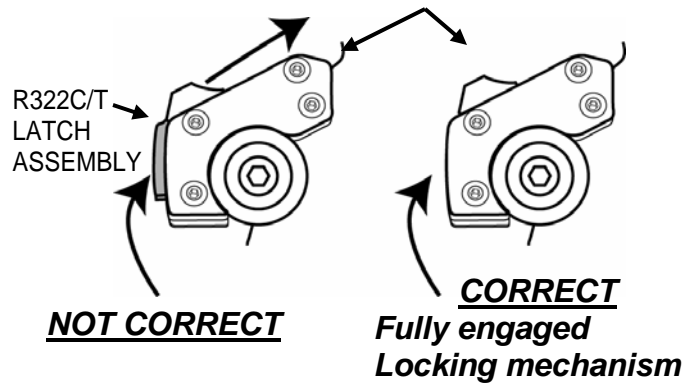


Fig. 1

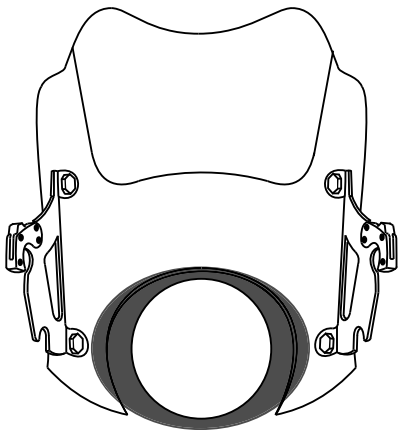


Fig. 2

