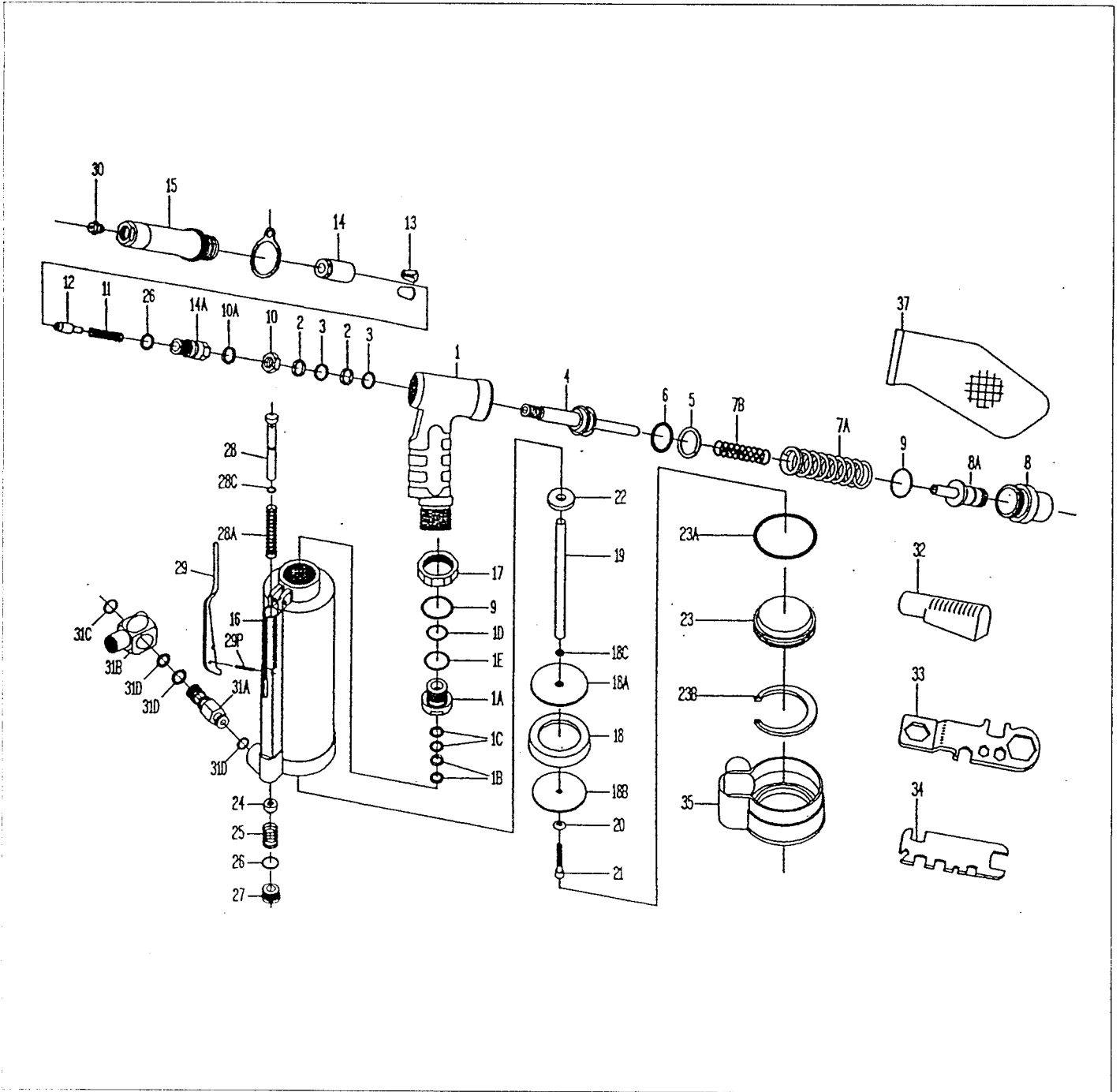




Riveter RRI-4011





Riveter RRI-4011

Ref no	Part no	Description	Qty
01	214111	Hydraulic Section	1
1A	144108	Plunger Rod Guide	1
1B	BR1116	Back-Up Ring (2)	2
1C	OR1116	O-Ring (2)	2
1D	OR1823	O-Ring	1
1E	OR2227	O-Ring	1
02	BR1217	Back-Up Ring (2)	2
03	OR1217	O-Ring (2)	2
04	214301	Hydraulic Plunger	1
05	BR2431	Back-Up Ring	1
06	OR2431	O-Ring	1
7A	144329	Return Spring (L)	1
7B	612319	Return Spring (S)	1
08	214102	Rear Gland	1
8A	214103	Guide Tube	1
09	OR3034	O-Ring (2)	2
10	214306	Nut	1
10A	ww1317	Wave Washer	1
11	214308	Spring	1
12	214302	Jaw Pusher	1
13	612303	Jaw "M" (2)	2
14	612304	Jaw Housing	1
14A	214305	Jaw Housing Coupler	1
15	144105	Head	1
16	918411	Air cylinder body	1
17	918109	Lock Nut	1
19	144501	Plunger Rod	1
20	PW0512	Washer	1
21	508020	Lock Screw	1
22	612503	Bumper Ring	1
22A	144501	Piston Ass'y (18-22)(ns)	1
23	918402	Air Cylinder Cap	1
23A	OR5461	O-Ring	1
23B	CH6063	Retaining Ring	1
24	918207	Trottle Valve	1
25	656204	Trottle Valve Spring	1
26	OR1417	O-Ring(2)	1

Ref no	Part no	Description	Qty
27	612206	Valve Plug	1
28	918210	Valve Tube	1
28A	612204	Valve Tube Spring	1
28C	OR0608	O-Ring	1
29	918611	Lever	1
29P	SP3018	Roll Pin	1
30	612704	Nosepiece 1/8" (3.2 mm)	1
	612705	Nosepiece 5/32"(4.0 mm)	1
	612706	Nosepiece 3/16"(4,8 mm)	1
	612716	Nosepiece 3/16"(4.8 mm)	1
		"T"Rivet	1
	612708	Nosepiece 1/4" (6,4mm)	1
31	922100	Swivel Joint Ass'y (31A-31D) (ns)	1
31A	612715	Male Inlet Body	1
31B	922A01	Female Inlet Body (1/4"-18NPTF)	1
31C	CS1316	Snap Ring	1
32	612901	Deflector	1
33	612904	Multi-Wrench (A)	1
34	918905	Multi-Wrench (B)	1
35	918403	Rubber Boot	1
37	612903	Mandrel Collector	1