

BLACK FROM DC ADAPTER TO NEGATIVE TERMINAL OF BATTERY

RED FROM FIBER BRD TO POSITIVE TERMINAL OF BATTERY

BLACK FROM PCB (NEG) TO DC ADAPTER

RED

BLACK

BLUE FROM PCB (SW1) TO SWITCH (RIGHT LEG)

BLUE FROM PCB (SW2) TO SWITCH (LEFT LEG)

BLK FROM PCB (NEG CLIP) TO SWITCH ON/OFF

RED FROM PCB (POS) TO POSITIVE TERMINAL OF BATTERY

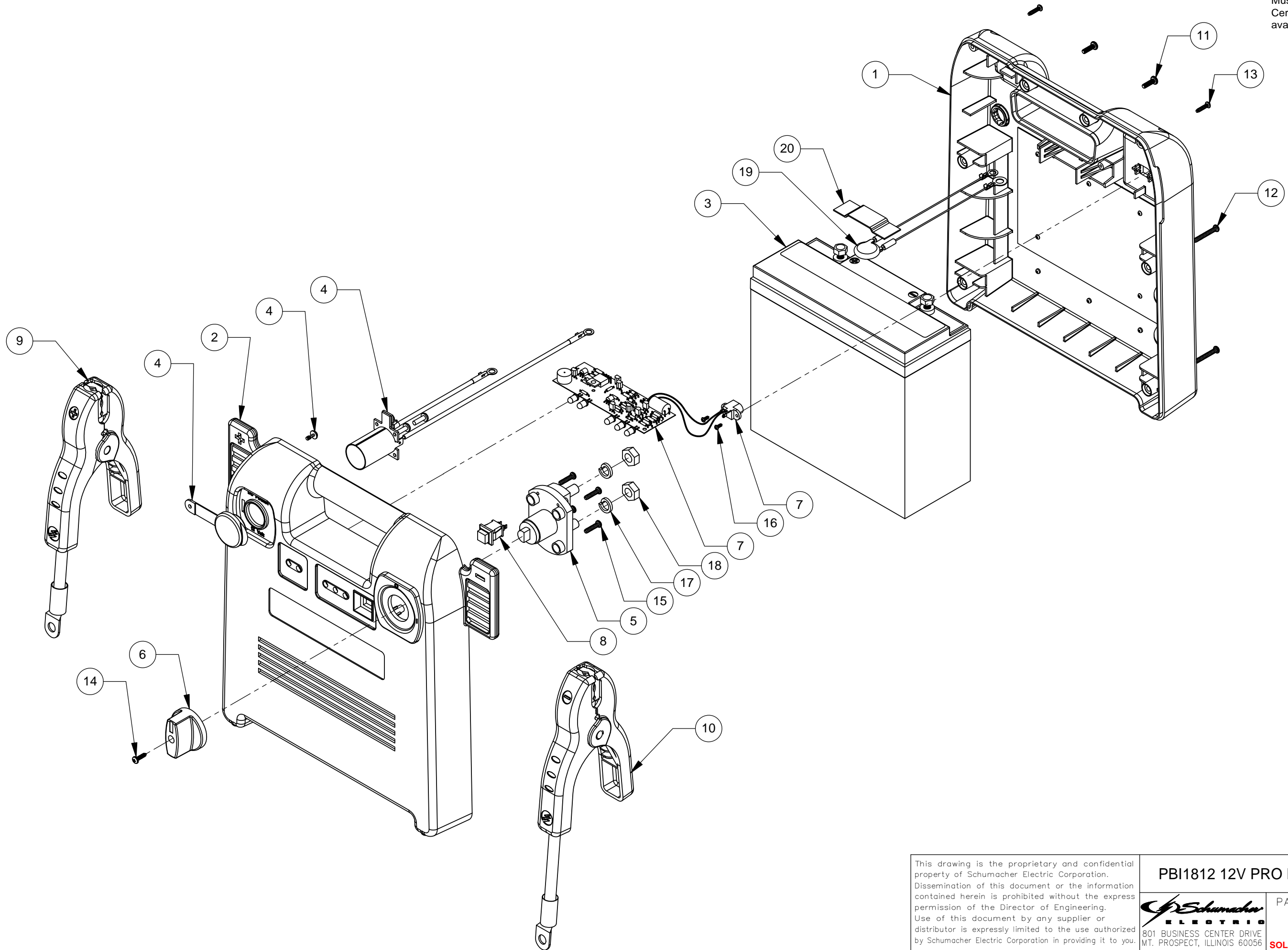
10	REPLACE 2299002420 WITH 2299002855 QTY 1; RMV 0699000321 QTY 1 & 0000000736 QTY .002	8840	12/08/15	VM	DRAWN: 9/24/12	BY: OS	This drawing is the proprietary and confidential property of Schumacher Electric Corporation. Dissemination of this document or the information contained herein is prohibited without the express permission of the Director of Engineering. Use of this document by any supplier or distributor is expressly limited to the use authorized by Schumacher Electric Corporation in providing it to you.
09	RELEASE AS MANUFACTURED IN MEX	8724	8/10/15	JM	CHECKED: 9/25/15	BY: JLM	
08	CHANGED PN ON LABEL TO ENABLE REORDER	7442	4/15/13	KK	APPROVED: 9/25/15	BY: PC	
07	MODIFIED TABLE BOM TO MATCH MFR. BOM	5569	1/31/12	IN	SCALE: 1:3	SIZE: B	
06	UPDATE 94065001 TO R	5569	12/12/2011	RK	ALL DIMENSIONS IN INCH(MM) UNLESS OTHERWISE SPECIFIED		
05	INITIAL DRAWING RELEASE	5569	12/01/2011	RK	TOLERANCES .XXX ±.004[0.10] .XX ±0.01[0.3] .X ±0.1[2.5] FRACTIONAL ±1/64 ANGULAR ±5MIN		
NO.	REVISION	ECN	DATE	SIG.			THIRD ANGLE PROJECTION

PBI1812 12V PRO BOOSTER PLUG C CE



PART NUMBER:
94065001C

801 BUSINESS CENTER DRIVE
 MT. PROSPECT, ILLINOIS 60056



This drawing is the proprietary and confidential property of Schumacher Electric Corporation. Dissemination of this document or the information contained herein is prohibited without the express permission of the Director of Engineering. Use of this document by any supplier or distributor is expressly limited to the use authorized by Schumacher Electric Corporation in providing it to you.

PBI1812 12V PRO BOOSTER PLUG C CE



PART NUMBER:
94065001C
 SOLIDWORKS SH 2 OF 4

REV:
10

BILL OF MATERIALS

ITEM NO.	PART NUMBER	DESCRIPTION	QTY.
1	3699001847	CASE BACK PBI1812 W/DC MALE PLUG INSER	1
2	3699001853	Case Front PBI1812	1
3	5799000010	BATT 12V22AH W/UL MARK	1
4	2299002203	ASSY FIBER BOARD W/BREAKER	1
5	0499000148	SWITCH, ON/OFF BLK PBI/PSJ	1
6	0099000678	SWITCH-KNOB	1
7	2299002855	ASSY PCB PBI1812 THRU HOLE	1
8	0499000084	SWITCH, PUSH RED KNOB 1A 125 VAC	1
9	2299002593	ASSY BATT CABLE WITH FUSE PBI1812	1
10	3899002884	CABLE 4GA 31.5IN BLACK C JAW T924	1
11	5199000426	SCREW M3.5x12 PH PHST SBZP	2
12	5199000456	SCREW M3.5x25 PH PHST SZP	4
13	5100000017	SCREW M3X12MM PH PHIL TAP BLACK ZINC	2
14	5199001122	SCREW M3x12 PH PHST SBLX	1
15	5199000464	SCREW M3.5X0.6X15MM PAN HEAD PHIL	4
16	5199001490	SCREW M2.3X6MM,SELF-TAPPING	2
17	5299000024	WASHER, SPRING 12.5 X 8.2 X 2.2MM	2
18	5299000030	NUT M8 STEEL WITH COPPER PLATING	2
19	6294065001	JUMPER KIT PBI1812	1
20	0000000723	TAPE 63X19X1.5MM ADHESIVE BACKED	1

10

38	9614000582	SPEC TO PRINT LBL NON SPILLABLE	1
39	9614000688	SPEC TO PRINT DATE CODE PBI MODELS	3
40	94065021	TRANSFORMER CE LISTED 17V 0.7A PLUG C	1
41	4999001242	POLY BAG CLEAR 50CM X 70CM	1
42	0000000144	CABLE TIE TYTON CABLE #T18R	2

NOT SHOWN ON DRAWING

43	3400200048	PAD 40" X 44"	.07
44	3400500010	PALLET 40 IN X 48IN MAY BE USED PALLET	.014
45	9607000460	TEST PROCEDURE PBI1812	1
46	9610000385	SCHEMATICS PBI1812	1

21	0099001154	MANUAL OWNERS PBI1812	1
22	0899005026	LABEL PRODUCT PBI1812	1
23	0899005027	LABEL CNTRL PNL JMP START PBI1812 L	1
24	0899005028	LABEL CNTRL PNL JMP START PBI1812 R	1
25	0899005029	LABEL LOWER FRONT PBI1812	1
26	0899005031	LABEL IMMDET CHRGR MULTI-LNG INTL	1
27	0899005033	LABEL DC INPUT 17V 700MA	1
28	0899006133	LABEL DC OUTPUT 12V 15A ACCESSORY PORT	1
29	0899006364	LABEL BATT SCHUMACHER	1
30	0899006377	CARTON LABEL UPC PBI1812	1
31	0899006848	LABEL JUMP STARTER WARNING MULTI-LNG	1
32	0899007418	LABEL DEKRA PBI1812	3
33	3499102017	CARTON INDIVIDUAL PBI1812	1
34	3499102055	CARTON INSERT PBI1812	2
35	3899003543	JMP 4GA BLK3.5 IN 913/924	1
36	4999000336	EPE FOAM INSERT 50X50X40MM	1
37	9614000461	SPEC TO PRINT SERVICE CODE LABEL	1

This drawing is the proprietary and confidential property of Schumacher Electric Corporation. Dissemination of this document or the information contained herein is prohibited without the express permission of the Director of Engineering. Use of this document by any supplier or distributor is expressly limited to the use authorized by Schumacher Electric Corporation in providing it to you.

PBI1812 12V PRO BOOSTER PLUG C CE



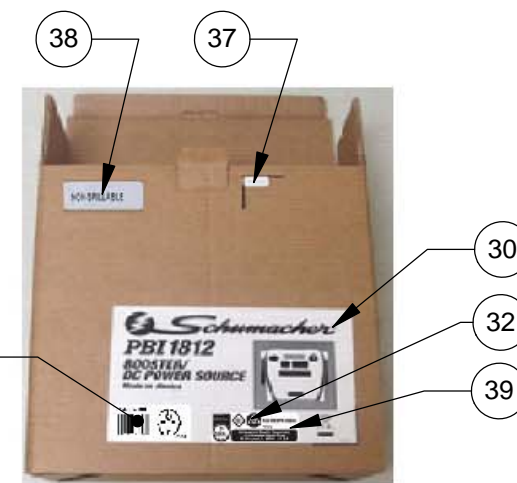
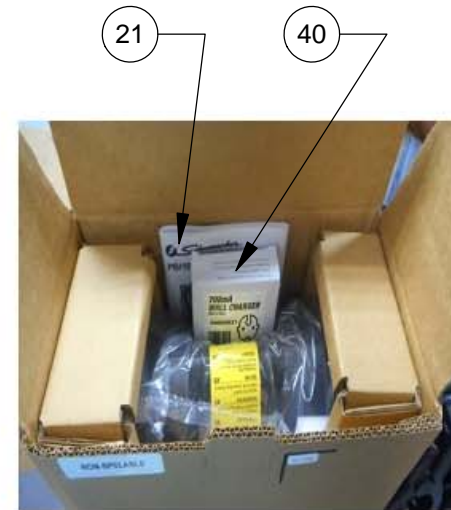
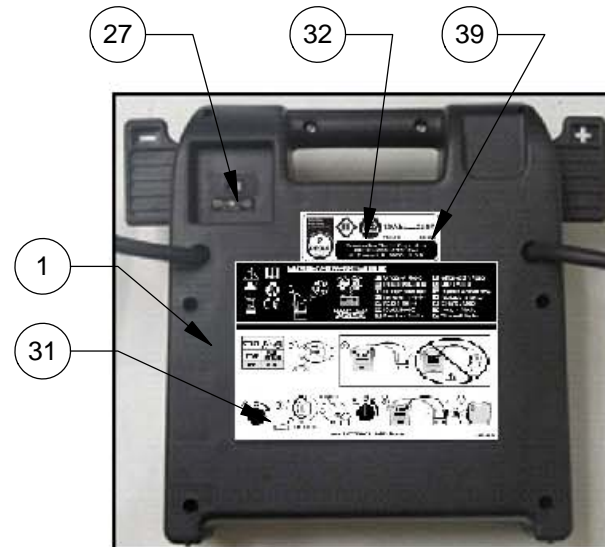
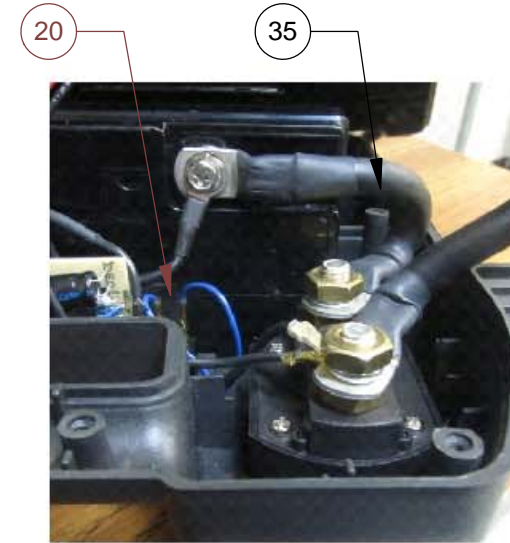
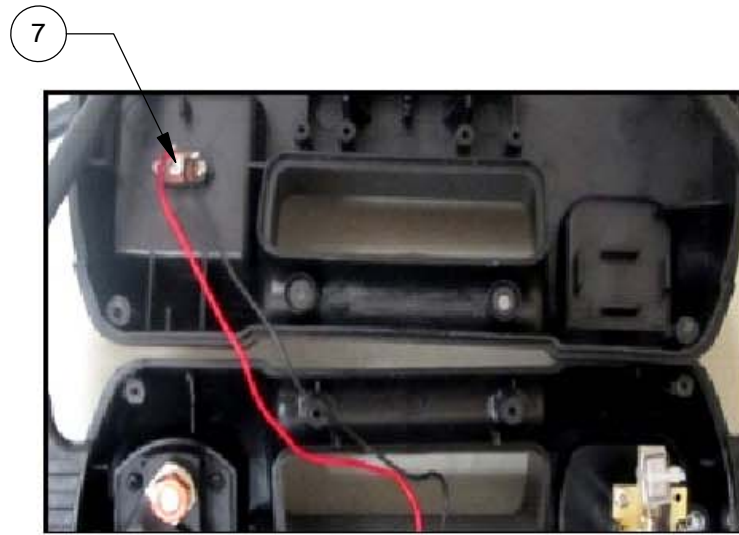
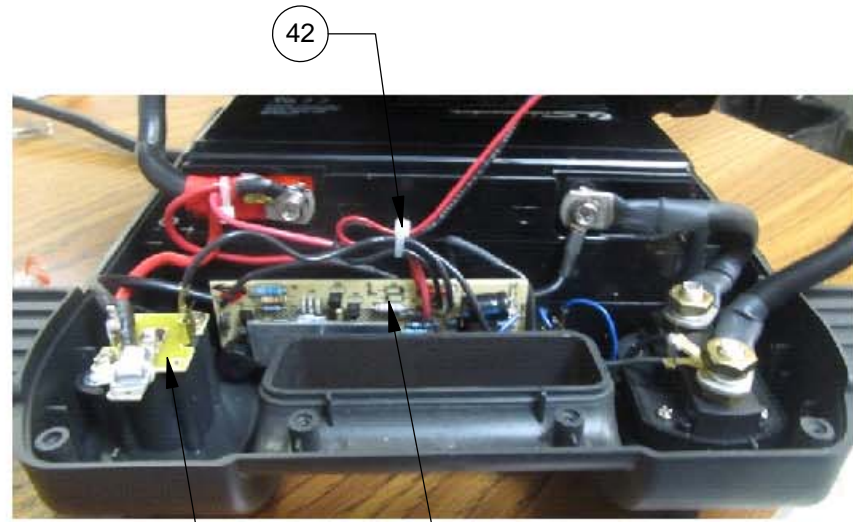
PART NUMBER:
94065001C

REV:
10

801 BUSINESS CENTER DRIVE
 MT. PROSPECT, ILLINOIS 60056

SOLIDWORKS SH 3 OF 4

Must be RoHS 2011/65/EU compliant.
 Certification of compliance must be
 available upon request.



PART OF
 ITEM # 40

This drawing is the proprietary and confidential property of Schumacher Electric Corporation. Dissemination of this document or the information contained herein is prohibited without the express permission of the Director of Engineering. Use of this document by any supplier or distributor is expressly limited to the use authorized by Schumacher Electric Corporation in providing it to you.

PBI1812 12V PRO BOOSTER PLUG C CE

Schumacher ELECTRIC
 801 BUSINESS CENTER DRIVE
 MT. PROSPECT, ILLINOIS 60056

PART NUMBER:
94065001C
 SOLIDWORKS SH 4 OF 4

REV:
10