



# INSTALLATION

## FORK SKINS FOR XL

## 7202

### PARTS INCLUDED

- 1 Narrow Fork Brace
- 2 Fork Brace Inner Clamp Half
- 1 Left Fork Skin — (Deep Caliper Cutout)
- 1 Right Fork Skin — (No Cutout)
- 1 Right Axle Cap — with Black Plastic Axle Cap Carrier — W/O Threads—'04-'07
- 1 Left Axle Cap — with Black Plastic Axle Cap Carrier — Threaded—'04-'07
- 1 Round Hole Axle Cap—'08 and Later
- 1 Hex Hole Axle Cap—'08 and Later
- 1 Hardware Kit, Including:
  - 4 #8-32 x 1/4" Setscrews
  - 2 1/4"-20 x 5/8" Setscrews
  - 4 1/4"-20 x 1" Socket Head Cap Screws
  - 1 1/2"-20 Flanged Prevailing Torque Nut
  - 2 1/8" x 3/8" O-Ring
  - 2 Fork Bottom Centering Inserts
- 1 Installation Instructions

Please read and understand entire instructions before starting installation.

### THANK YOU FOR CHOOSING KÜRYAKYN!

**IN ORDER TO PROTECT YOU AND OTHERS FROM POSSIBLE INJURY AND/OR PROPERTY DAMAGE OR LOSS, PLEASE PAY CLOSE ATTENTION TO ALL INSTRUCTIONS, WARNINGS, CAUTIONS AND NOTICES REGARDING THE USE AND CARE OF THIS PRODUCT.**

#### NOTICE

This indication alerts you to the fact that ignoring the contents described herein may negatively affect product performance and functionality.

#### CAUTION

This indication alerts you to the fact that ignoring the contents described herein can result in potential injury.

#### NOTICE

**IF INSTALLING THIS PRODUCT FOR ANOTHER PARTY, PLEASE MAKE SURE THEY RECEIVE THIS COPY OF THE INSTALLATION INSTRUCTIONS SO THEY ARE AWARE OF THE IMPORTANT INFORMATION CONTAINED IN THEM.**

### TOOLS SUGGESTED

Set of Hex Wrenches, Set of Combination Wrenches, Clean Rag, Foot-Pound Torque Wrench, Hex Wrench Socket Set

**STRICTLY OBSERVE THE FOLLOWING GUIDELINES IN ORDER TO USE THE PRODUCT PROPERLY AND AVOID POTENTIALLY DANGEROUS ACCIDENTS.**

#### STEP 1

Read and understand all steps in the instructions before starting the installation. Park the motorcycle on a hard, level surface and turn off the ignition.

#### STEP 2

Place the O-ring in the groove on the chrome centering inserts. PIC 1 Slide the inserts into the holes in the bottom of the fork sliders. PIC 2 The O-ring serves only to keep the insert in place during installation.

### CUSTOMER SERVICE

877.370.3604 (toll free)

### INSTALLATION QUESTIONS

techsupport@kuryakyn.com  
or call 715.247.2983

### LIMITED WARRANTY

Kuryakyn warrants that any Kuryakyn products sold hereunder, shall be free of defects in materials and workmanship for a period of one (1) year from the date of purchase by the consumer excepting the following provisions:

- Kuryakyn shall have no obligation in the event the customer is unable to provide a receipt showing the date the customer purchased the product(s).
- The product must be properly installed, maintained and operated under normal conditions.
- Kuryakyn makes no warranty, expressed or implied, with respect to any gold plated products.

• Kuryakyn shall not be liable for any consequential and incidental damages, including labor and paint, resulting from failure of a Kuryakyn product, failure to deliver, delay in delivery, delivery in nonconforming condition, or for any breach of contract or duty between Kuryakyn and a customer.

• Kuryakyn products are often intended for use in specific applications. Kuryakyn makes no warranty if a Kuryakyn product is used in applications other than intended.

• Kuryakyn electrical products are warranted for one (1) year from the date of purchase by the consumer. L.E.D.'S contained in components of Kuryakyn products will be warranted for defects in materials and workmanship for 3 years from the date of purchase where as all other components shall be warranted for one(1) year. This includes, but is not limited to; control modules, wiring, chrome & other components.

• Kuryakyn makes no warranty of any kind in regard to other manufacturer's products distributed by Kuryakyn. Kuryakyn will pass on all warranties made by the manufacturer and where possible, will expedite the claim on behalf of the customer, but ultimately, responsibility for disposition of the warranty claim lies with the manufacturer.

### ABOUT OUR CATALOG

For purchasing Kuryakyn® products, you can receive a complete catalog free of charge.

Send the Proof-of-Purchase below with your address to: Kuryakyn, P.O. Box 339, Somerset, WI 54025.

Please indicate either Accessories Catalog for Harley-Davidson® or GL & Metric Cruisers.

Be sure to ask your local dealer about other Kuryakyn® products, the motorcycle parts and accessories designed for riders by riders.

©2005 Kuryakyn USA® All Rights reserved.



kuryakyn.com

**STEP 3** **On '04-'07 Models:** Remove the front axle nut, split lock washer, and flat washer from the front axle. Replace these three components with the flanged, prevailing torque lock nut included in the kit. This nut provides all of the functions of the three OEM components, but allows more thread to protrude through the nut. Torque the new axle nut to 50 foot-pounds. Install the chrome axle caps with the plastic carriers in place. PIC 3 The right side simply slides on, and the left side screws on. Both are held in place with the #8-32 setscrews.

**On '08 and Later Models:** Install two of the included #8-32 setscrews into each axle cap without a black plastic carrier. Install the axle cap with the hex hole to the axle nut side and the axle cap with the round hole to the axle side. Tighten securely.

**NOTICE** **Avoid damage to the motorcycle. Protect painted surfaces with a soft cloth or blanket.**

**STEP 4** Place a soft cloth on top of the front fender between the fork tubes to guard against scratching. Slightly loosen the four button head cap screws securing the inner clamp halves to the fork brace. Carefully insert this fork brace assembly between the fork sliders and hold it in place.

**STEP 5** Set one of the fork covers into position on the slider. The axle cap should protrude through the Fork Skin on the bottom. PIC 4 Secure the fork brace to the top of the Fork Skin with two 1/4"-20 x 1" socket head cap screws, loosely for now. Repeat for the other side.

**STEP 6** At the very bottom of each Fork Skin, insert one of the 1/4"-20 x 5/8" setscrews, but do not tighten yet.

**STEP 7** Adjust the height of the fork brace on each side. The fork brace should clamp on to the fork slider in the same position on each side. The hole at the bottom of the Fork Skin should be centered as closely as possible around the axle caps. Tighten the clamps to the sliders on each side, snug only for now.

**STEP 8** Tighten the button socket cap screws securing the fork brace to the inner clamp halves to 7-8 foot-pounds. Be sure the Fork Skin clamps are in line with the fork brace.

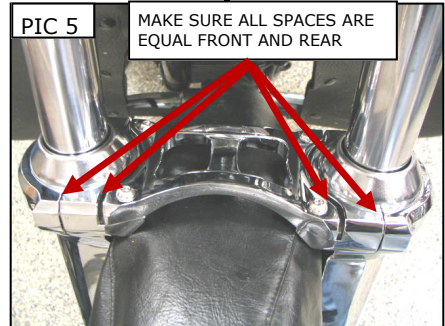
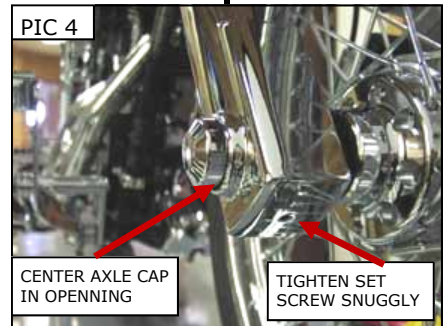
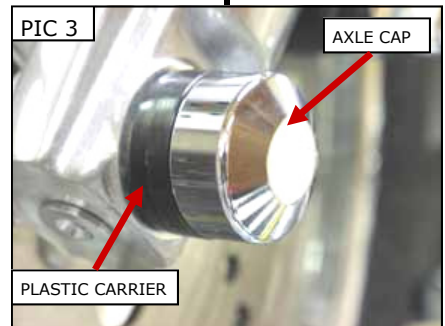
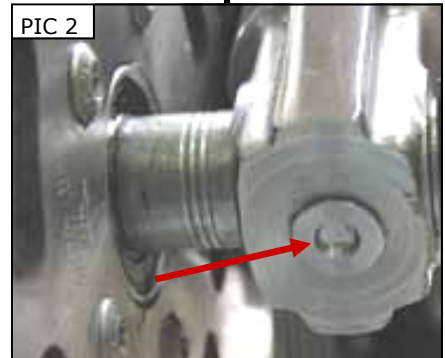
**STEP 9** Tighten the socket head cap screws securing the Fork Skins to the inner clamp halves to 7-8 foot-pounds. Make sure the gaps in the front and rear of the clamp are equal. PIC 5

**STEP 10** Tighten the set screws in the bottom of the fork skins so they index into the centering devices on the bottom of each fork slider. PIC 4

**NOTICE** **DO NOT over tighten these setscrews – TIGHTEN TO SNUG ONLY!**

**NOTICE** **It is the installer's responsibility to ensure that all of the fasteners (including pre-assembled) are tightened before operation of the motorcycle. Küryakyn will not issue a warranty on components lost due to improper installation. Periodic maintenance may be required.**

**CAUTION** **Ensure that the installation of this product does not interfere with the proper operation of the motorcycle before riding.**



*Ride On!*