



Part No. 2321-0342

MEK1988

REVISION 0

**Trigger Lock Mounting Kit
MS Sportshield
Suzuki M50 Boulevard**

**Aluminum parts are electrocoated (E-coated)
for durability and weather resistance.**

Before assembly, read Warnings inside



WARNING

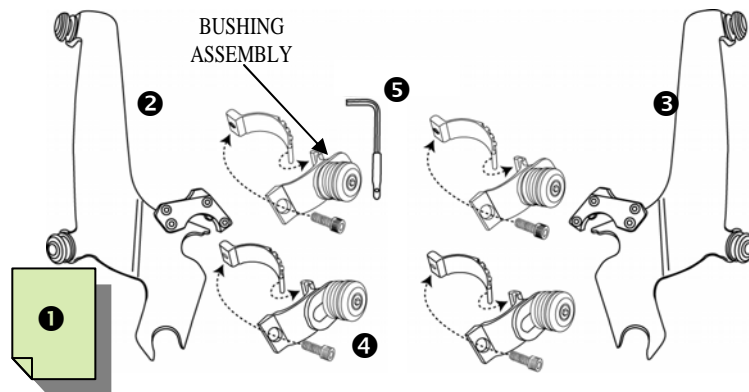
1. During installation, make sure that the windshield and hardware do not interfere with any cables or wiring when the forks are turned all the way in either direction. Also make sure, through the full range of adjustment, that the windshield and hardware do not hit the gas tank.
2. This is a detachable windshield, ALWAYS make sure the locking mechanism is fully engaged after installing the windshield.
3. The improper installation of this kit and related components could result in serious injury or death.



CAUTION

1. Memphis Shades windshields are made from Lucite® acrylic, and will last for years with proper care. Clean your windshield with plenty of soapy water (mild dish-washing liquid is best) and a soft cotton cloth. Use your bare hands to feel and dislodge bugs, or cover with a wet, soapy towel and let it soak. Don't use paper towels and scrape with anything. Small scratches can be removed with NOVUS #2.
2. Never use any glass cleaning products, petroleum based chemicals, or cleaning agents with ammonia, bleach or any other harsh chemicals. This includes (but not limited to) RainX, brake fluid, acetone, paint thinner, benzene and gasoline. "If it hurts your nose, it will hurt the plastic."
3. Glass cleansing agents will cause severe damage to your windshield, and will void your warranty. For care and cleaning we recommend using **Memphis Shades All Kleer**, a unique cleaner/polish, bug remover and rain repellant that leaves a super slick surface that makes the next cleaning even easier.
4. At certain times of the day the Sunlight can reflect off the curvature of a windshield and cause extreme heat build-up on motorcycle instruments and instrument panel. Take care when parking. Park facing the sun, place an opaque object over the instruments or adjust the windshield to avoid reflections.

1. Kit Contents



Ref	Code	Description	Qty
❶	I1988	Mounting Instructions	1
❷	M1158	Throttle side mounting plate assembly	1
❸	M1159	Clutch side mounting plate assembly	1
❹	S1214	Large detachable clamp assembly	4
❺	M310	Short arm allen wrench, 3/16	1

2. Mounting Instructions

No additional tools required for this kit.

1. **Cover gas tank and front fender with a towel to avoid damage during installation.**

2. Install the windshield mounting plates onto the windshield, using the bolts that are pre-assembled on the mounting plates.

The Santoprene grommets should be inserted through the holes in the windshield so that the flat round part of the grommet lies flat on each side of the plastic. *The tabs point in towards the headlight when installed correctly.* (Fig 1)

3. Loosely install the four Fork Clamps on the forks, approximately 2" apart. (Fig 2)

4. Start with Fork Clamp Bushing adjusted to rear of slot (Fig 3) Then adjust as needed and check for clearance.

WARNING

If the adjustable clamps are installed backwards, it will result in serious gas tank damage. Always check for proper gas tank clearance before tightening hardware.

5. Slip the windshield mounting plates and windshield onto the fork clamps, (Figs 4 & 5) and secure the left and right side locking mechanism.

Continued

Memphis Shades warrants all product components, metal and plastic, against defects in materials and workmanship for 24 months.

For Parts and Warranty Help, Contact:

Memphis Shades, Inc.

P.O. Box 429

Rossville, TN 38066

(901) 853 0293

Visit us on the web at www.memphisshades.com or you can also reach us by email:

customerservice@memphisshades.com

Trigger Lock Mounting Kit
MS Sportshield
Suzuki M50 Boulevard

2. Mounting Instructions, continued

6. Adjust the height, angle and alignment of the windshield and tighten **ALL** bolts. (Fig 6)

Note: This is a detachable windshield, **ALWAYS** make sure the **Locking Mechanism** is **Fully Engaged** after installing the windshield! (Fig 5)

Fig. 1

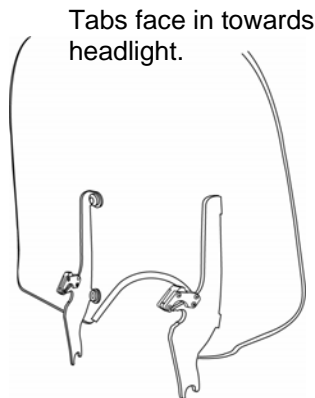
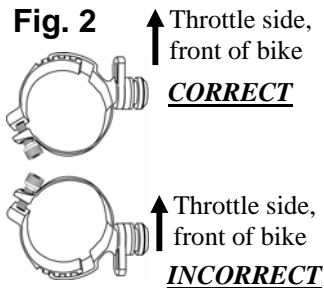
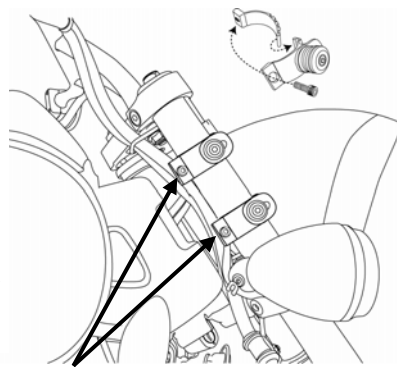


Fig. 2



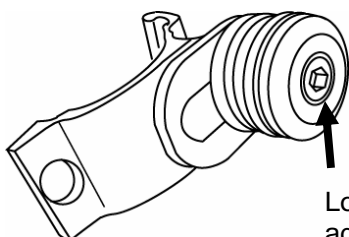
WARNING:

"Mounting clamps backwards will cause damage to your tank."



Side view. When installed correctly, Allen bolts are tightened from the back side of the fork, not the front.

Fig. 3



Loosen Allen Screw to adjust Bushings to desired windshield angle.

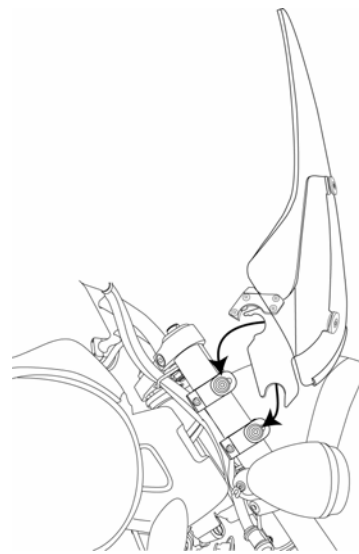
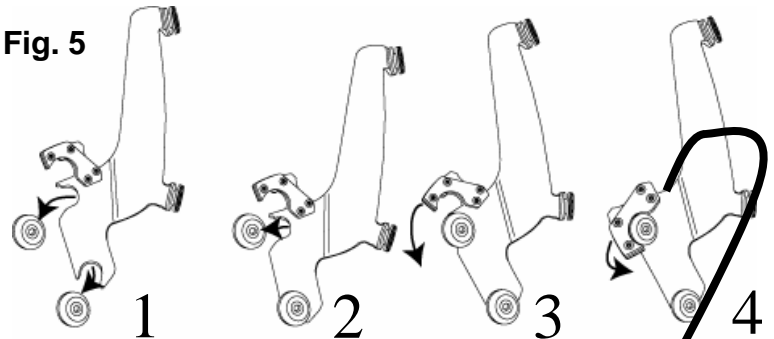


Fig. 5



1. Place lower slot into lower bushing.
2. Rotate top slot into place.
3. Secure locking Mechanism.
4. Loosen Allen Bolt to adjust angle, then re-tighten Allen Bolt.

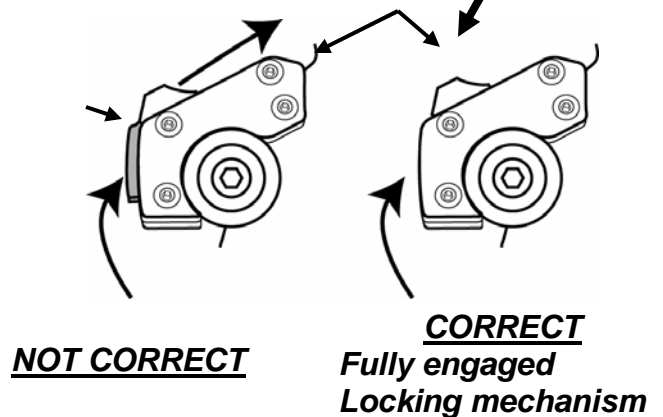
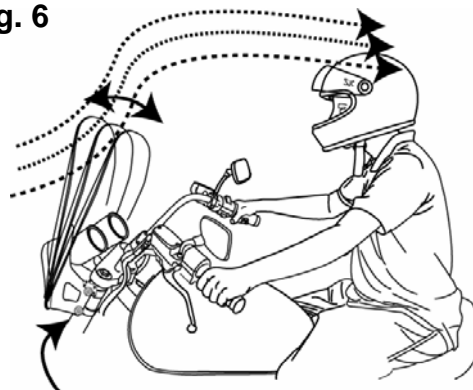


Fig. 6



Loosen Allen Bolt to adjust angle, then re-tighten Allen Bolt.