



Part No. 2321-0347

MEB1990

REVISION 0

**Trigger Lock Mounting Kit - Black**  
**MS Batwing Fairing**  
**Suzuki M50 Boulevard**

**Aluminum parts are electrocoated (E-coated)**  
**for durability and weather resistance.**

Before assembly, read Warnings inside



## WARNING

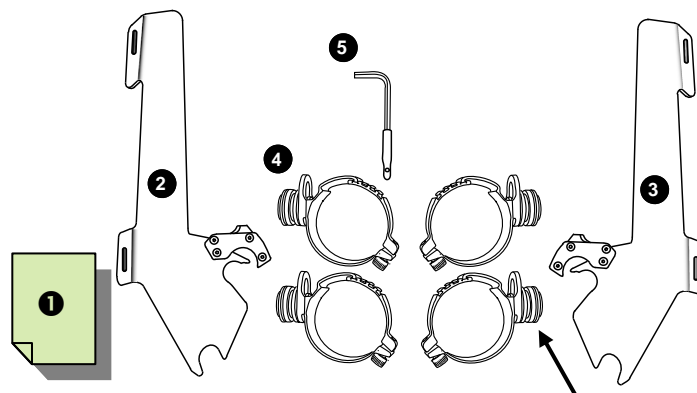
1. During installation, make sure that the fairing and hardware do not interfere with any cables or wiring when the forks are turned all the way in either direction. Also make sure, through the full range of adjustment, that the fairing and hardware do not hit the gas tank.
2. This is a detachable fairing, ALWAYS make sure the locking mechanism is fully engaged after installing the fairing.
3. The improper installation of this kit and related components could result in serious injury or death.



## CAUTION

1. Memphis Shades fairings are made from Lucite® acrylic, and will last for years with proper care. Clean your fairing with plenty of soapy water (mild dishwashing liquid is best) and a soft cotton cloth. Use your bare hands to feel and dislodge bugs, or cover with a wet, soapy towel and let it soak. Don't use paper towels and scrape with anything. Small scratches can be removed with NOVUS #2.
2. Never use any glass cleaning products, petroleum based chemicals, or cleaning agents with ammonia, bleach or any other harsh chemicals. This includes (but not limited to) RainX, brake fluid, acetone, paint thinner, benzene and gasoline. "If it hurts your nose, it will hurt the plastic."
3. Glass cleansing agents will cause severe damage to your fairing, and will void your warranty. For care and cleaning we recommend using **Memphis Shades All Kleer**, a unique cleaner/polish, bug remover and rain repellant that leaves a super slick surface that makes the next cleaning even easier.
4. At certain times of the day the Sunlight can reflect off the curvature of a fairing and cause extreme heat build-up on motorcycle instruments and instrument panel. Take care when parking. Park facing the sun, place an opaque object over the instruments or adjust the fairing to avoid reflections.

## 1. Kit Contents



Bushing Assembly.

Ref	Code	Description	Qty
①	I1990	Mounting instructions	1
②	M1272EB	Throttle side plate assembly	1
③	M1271EB	Clutch side plate assembly	1
④	S1214EB	Large detachable clamp assembly	4
⑤	M310	Short arm allen wrench, 3/16"	1

## 2. Mounting Instructions

Additional tools required that are not included in this kit:  
7/16" or 11mm wrench.

1. **Cover gas tank and front fender with towels to avoid damage during installation.**
2. Install the two mounting plates onto the fairing, using the acorn nuts and washers supplied with the fairing (Fig 1).
3. Loosely install the fork clamps, approximately 1 3/4" apart. (Fig 2)

### WARNING

If the adjustable clamps are installed backwards, it will result in serious gas tank damage. Always check for proper gas tank clearance before tightening hardware.

4. Start with each fork clamp bushing adjusted to the rear of the slot. (Fig 3)
5. Slip the fairing mounting plates and fairing onto the fork clamp bushing. (Fig 4)
6. Secure the Left and Right side Trigger Lock, locking mechanism. (Fig 5)
7. Adjust the height, angle and alignment of the fairing then tighten **ALL** bolts

Memphis Shades warrants all product components, metal and plastic, against defects in materials and workmanship for 24 months.

### **For Parts and Warranty Help, Contact:**

Memphis Shades, Inc.

P.O. Box 429

Rossville, TN 38066

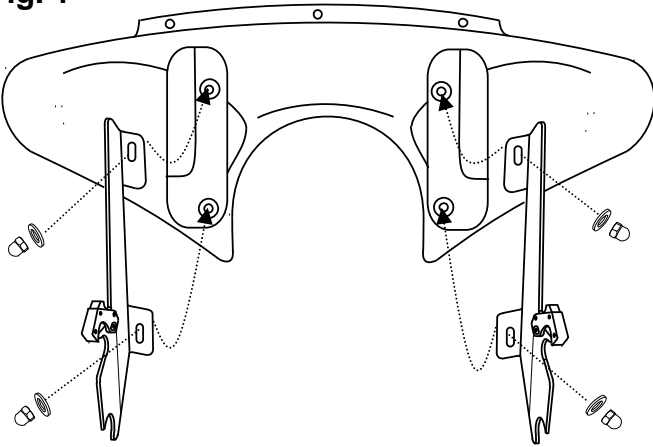
(901) 853 0293

Visit us on the web at [www.memphisshades.com](http://www.memphisshades.com) or you can also reach us by email:

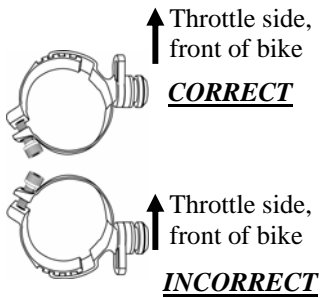
[customerservice@memphisshades.com](mailto:customerservice@memphisshades.com)

**Trigger Lock Mounting Kit - Black**  
**MS Batwing Fairing**  
**Suzuki M50 Boulevard**

**Fig. 1**

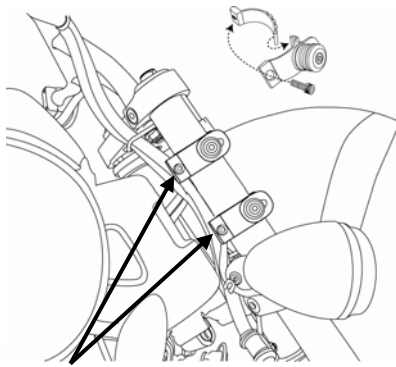


**Fig. 2**



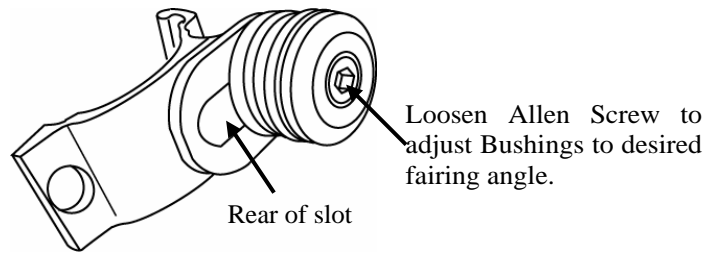
**WARNING:**

"Mounting clamps backwards will cause damage to your tank."

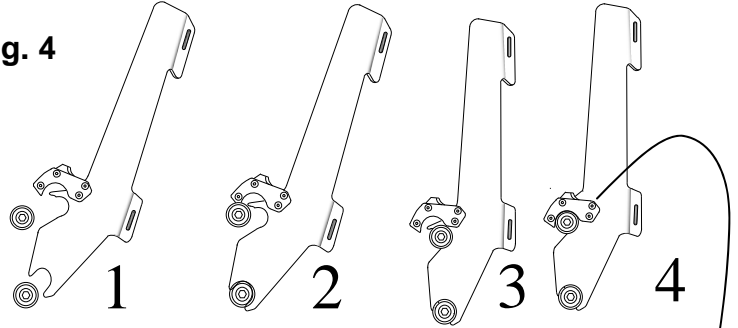


Side view. When installed correctly, Allen bolts are tightened from the back side of the fork, not the front.

**Fig. 3**



**Fig. 4**



1. Align the plates with the bushings.
2. Push lower slot into lower bushing.
3. Rotate the plates forward and push the upper slot into the upper bushing.
4. Lock the trigger in place.

**Fig. 5**

