

NEW
MICHELIN
ENDURO







*GET TO THE TOP,
WHATEVER THE
CONDITIONS!*



MICHELIN

A better way forward

A SIMPLIFIED OFFER

								
		Sand	Soft	Grass	Firm	Rocky	Hard/Solid	
Existing Enduro Offer	Front	ENDURO IV						
		ENDURO VI						
	Rear	ENDURO VI					ENDURO MS	
		ENDURO III						
NEW Enduro Offer	Front	ENDURO MEDIUM				ENDURO HARD		
	Rear	ENDURO MEDIUM						



MICHELIN ENDURO MEDIUM & HARD

FRONT

MEDIUM

HARD

REAR

MEDIUM



NEW MICHELIN ENDURO



More grip and **better cushioning*** ensures a significant improvement on uneven ground especially at low speed – this is thanks to the work done on both the **tread block shape** and layout, as well as the **internal structure** of the tyre.

More **versatility** and **exceptional wet grip** thanks to new rubber compounds specifically designed for off-road riding.

15% improvement in longevity** and significantly more **stable, reliable performance** over tyre life.

Improved **Bib Mousse compatibility**

*Compared to the previous generation in internal tests

**According to the independent results of tests carried out by Dekra in September 2016 and January 2017 with the dimension 140/80-18 70R comparing the new Enduro Medium with the Enduro Comp. IIIe

NEW BIB MOUSSE: M14 AND M18

I Improved performance :

- >** longer lasting and more constant performance
 - >** Improved performance (less rebound and better absorption of smaller impacts, for better traction)
- ⇒ thanks to a new mixture

I Improved fitting and compatibility:

- ⇒ By new dimensioning of the mousses (to fit better to the inner volume of the new Enduro tyres)
- ⇒ By the flexible 2-ply casing of the new Enduro (compared to the 3-ply casing of the previous tyres)

I New packaging:

- >** tougher
- >** New look, more information



DIMENSIONS



FRONT

MICHELIN ENDURO MEDIUM

90 / 100 – 21 M/C 57R

90 / 90 – 21 M/C 54R

MICHELIN ENDURO HARD

90 / 90 – 21 M/C 54R

REAR

MICHELIN ENDURO MEDIUM

120 / 90 – 18 65R

140 / 80 – 18 70R

SALES START: 01. SEPTEMBER

All dimensions with F.I.M. marking

PROFILE & PATTERN

REAR TYRE- ENDURO MEDIUM (140/80-18)

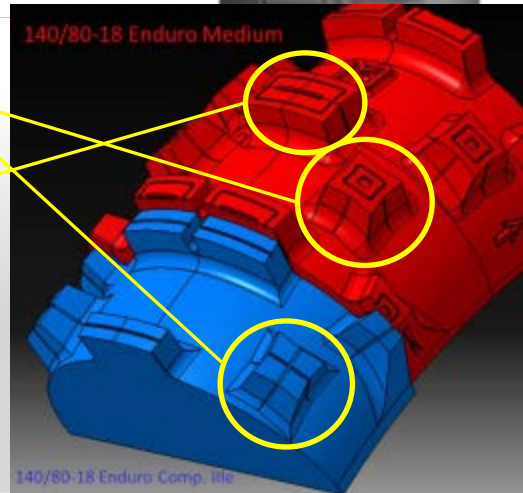
BENEFITS

- **Improved rut crossing and grip** thanks to a lengthened contact patch (1)
- **Better compatibility** between tyre and **Bib Mousse** (1)
- **Better resistance to tearing/chunking** (3-4) in the dry (2)
- **Multifunctional versatility** (2)

Block height: 13mm

TECHNICAL ELEMENTS

- 1 Profile taller and more narrow than the Enduro Comp III and Comp VI
- 2 Block size mid way between the Comp III the Comp VI
- 3 Radiused tread block bases
- 4 Larger intermediate blocks



PROFILE & PATTERN

REAR TYRE- ENDURO MEDIUM (120/90-18)

140/80-18 Enduro Medium pattern adapted to create the 120/90-18

- Respects the smaller bikes **geometry and characteristics**
- **Same number of blocks** and the **same block height** as the 140/80-18, but **smaller blocks**

Block height: 13mm



PROFILES

FRONT TYRE – ENDURO MEDIUM 90/90-21

BENEFITS (Vs 90/100-21)

- Improved rut crossing **(1)**
- Lightened turning, more precise and faster drop in **(1)**
- More versatility on muddy terrain, improved mud evacuation **(2)**
- Multifunctional, effective on all types of dry ground **(1,2,3)**

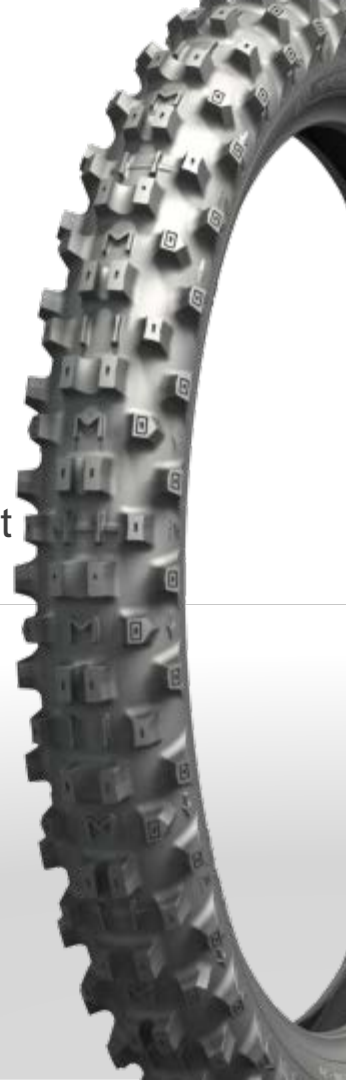
TECHNICAL ELEMENTS

- 1** Profile more angular (vs 90/100-21)
- 2** **Tread blocks smaller** to adapt to the profile and increase penetration
- 3** Profile height reduced

FRONT TYRE – ENDURO MEDIUM (90/100-21)

Re -configured 90/100-21 Enduro Comp VI.

Block height: 12mm



SCULPTURES

FRONT TYRE – ENDURO HARD (90/90-21)

BENEFITS

- **Increased stability** particularly at lean on hard ground (1)
- Increased tread **block rigidity** aids cornering precision

USAGE – hard and dry conditions



ROCKY



**HARD /
SOLID**

TECHNICAL ELEMENTS

- 1 **2mm less block height** at the shoulders compared to the Enduro Medium
- 2 **3 distinct rows** of knobs with a decreasing profile

Block height: mid 12 mm, outside 10 mm



ARCHITECTURE

FRONT AND REAR TYRES

All the tyres in the new range use a new architecture with 2-casing ply of Polyester + a new bead area design



Objectives:

- To create tyres with flexibility to absorb smaller impacts while retaining the rigidity needed to maintain a line and avoid deflection over bigger hits
- Optimise the compatibility with Bib Mousse to reduce the over hard feel with new Bib Mousse fitted and retain the 'broken in' feel, without becoming over soft in use

TREAD COMPOUNDS

FRONT COMPOUND

- Compounds developed from MX to offer maximum grip and resistance to damage.

REAR COMPOUND

- New Enduro Medium rear uses a **radically different tread compound**
- Entirely new enduro specific **Silica based tread** compound.
- **Improved dry grip, wet grip and wear resistance** - wet grip is significantly improved without affecting longevity.

MICHELIN ENDURO FRONT

MEDIUM OR HARD ? 90/90 OR 90/100 ?

ENDURO MEDIUM

90/90-21

- Versatile with precise and sharp handling
- Lightweight, strong in rutted conditions
- Very responsive

90/100-21

- Larger size is more absorbant and comfortable
- Excellent braking performance
- Very stable

ENDURO HARD

90/90-21

- The tyre choice for very hard and dry ground, for competition or leisure at all levels

NEW MICHELIN Enduro

Recommended tyre pressures



*Recommended
tyre pressures:*

front: 1,0 bar

rear: 1,0 bar

SPONSORING

The new Enduro tyres are already in use:

- Team *Husqvarna* Enduro GP
- Top national riders in France: E. Albepart, J. Gauthier, etc.
- Team Suzuki Valenti (Italy)
- Elite riders in Greece + UK



Technical Overview

Enduro MEDIUM



90/90-21 54R

40 blocks: 12mm height continuously

90/100-21 57R

*Idem 90/100-21 Enduro Comp. VI
New mould for marking*



140/80-18 70R

*38 blocks: 13mm height continuously (idem
Enduro IIIe)*

120/90-18 65R

Enduro HARD



90/90-21 54R

*48 blocks: 10/12/10 mm height continuously
(idem M12)*

NEW
MICHELIN
ENDURO

*GET TO THE TOP,
WHATEVER THE
CONDITIONS!*



MICHELIN

A better way forward