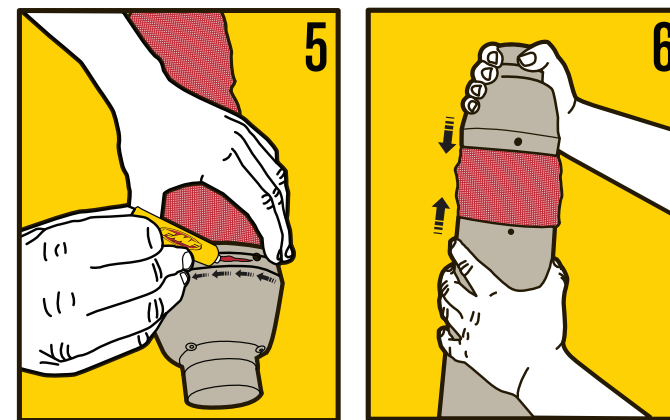
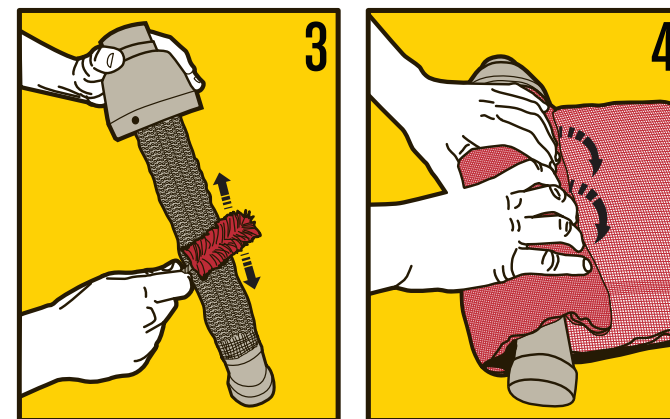
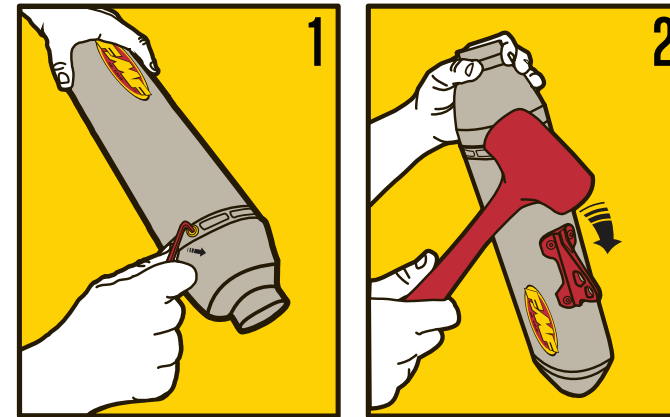


[REPACKING INSTRUCTIONS]



STEP 1: Before getting started with the repack, be sure to remove any spark arrestor or insert from the muffler outlet. To begin repacking, first remove the Allen screws from the front of the muffler (closest to the midpipe). Do not remove the rear end-cap from the muffler can.

STEP 2: Using care not to damage or distort the shape of the metal, grasp the front end-cap (midpipe side) with your hand and begin working it out of the muffler canister. You may need to lightly tap the muffler mount with a rubber mallet for an easier separation. Slowly pull the end-cap and core all the way out of the can, exposing the remains of the old packing material.

STEP 3: Unwrap the old packing from the core and discard. To ensure there are no clogs in the perforations, clean the core with a wire brush to remove all of the old material.

STEP 4: Align the new packing with the longest dimension running the length of the core. Wrap the core and secure the packing with a strip of 1/2" wide masking tape near each end. The packing should be snug, but not too tight, as this may actually increase the noise level.

STEP 5: Before reinstalling the inner core assembly into the muffler can, apply a thin bead of FMF high-temp silicone on the front end-cap where it makes contact with the canister.

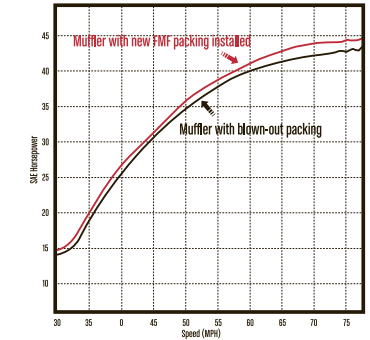
STEP 6: Slide the inner core assembly into the canister, making sure it is fully seated into the rear end-cap. Wipe off any excess silicone and reinstall the Allen screws. Tighten each screw an additional 1/4 turn once the screw has made contact with the canister. Allow sufficient time for the silicone to cure before starting the engine.



FMF RACING is the world leader in performance exhaust for motorcycles and ATVs. All of our exhaust products are constructed from the highest quality materials available, and our mufflers are designed to run with packing material that must be maintained. You may not realize it, but proper muffler maintenance can play a critical role in the overall performance of your machine. Four-strokes are subjected to extremely high temperatures at the silencer, and thus the packing burns and blows out as the engine is run. Every time you ride, packing material slowly deteriorates and performance is gradually lost. Using an improperly maintained or neglected muffler will not only hurt performance, it will result in a noise level higher than the muffler was designed to produce.

To restore that peak power and lightning-quick throttle response that you've grown to expect out of your FMF four-stroke exhaust system, we recommend repacking your muffler every 10 to 30 hours, depending on the type of riding you do. Riding in a high RPM range as opposed to that in the low-to-mid throttle area will cause excessive heat, ultimately accelerating the rate of packing material degradation. Under these conditions, the packing material should be replaced more frequently. Water can also ruin muffler packing, which is why we always recommend plugging the exhaust outlet with an FMF Wash Plug when washing your motorcycle or ATV.

FMF muffler packing is a proprietary blend of the most advanced, longest-lasting sound absorption materials available, and utilizing it will not only help to maintain peak performance, your exhaust will continue singing with that race tone that you've come to expect.



*NOTE: This repacking kit is not intended for use with Carbon mufflers. Use FMF part number# 012331 for servicing your Factory 4.1 Carbon muffler.

- » RESTORE PEAK POWER & IMPROVE THROTTLE RESPONSE
- » IMPROVE MUFFLER LIFE WITH TOP-GRADE PACKING
- » REDUCED SOUND LEVELS KEEP RIDING AREAS OPEN