



Installation Instructions for KPMI Part No: 60-60280

Suzuki LTR 450 • 2006 - '09

Lightweight Racing Valve Spring Kit

A) 60-60280 Kit Includes

<u>KPMI Part No.</u>	<u>Qty</u>	<u>Application</u>	<u>Description</u>
60-60281	2 - Pcs	Intake	Titanium Retainers
60-60283	2 - Prs	Intake	Chrome Silicon Springs
60-60285	2 - Pcs	Intake	H.T. Steel Basewashers
60-60282	2 - Pcs	Exhaust	Titanium Retainers
60-60284	2 - Prs	Exhaust	Chrome Silicon Springs
60-60286	2 - Pcs	Exhaust	H.T. Steel Basewashers

B) Recommended Installed Height - Intake

1. Installed Height	1.185"-1.195"
2. Seat Pressure	57#
3. Open Pressure at .394" valve lift	160#
4. Max Valve Lift	0.415"

B) Recommended Installed Height - Exhaust

1. Installed Height	1.215"-1.225"
2. Seat Pressure	50#
3. Open Pressure at .394" valve lift	145#
4. Max Valve Lift	0.415"

C) Notes

1. The difference between the installed height and the coil bind height is considered "Free-Travel"

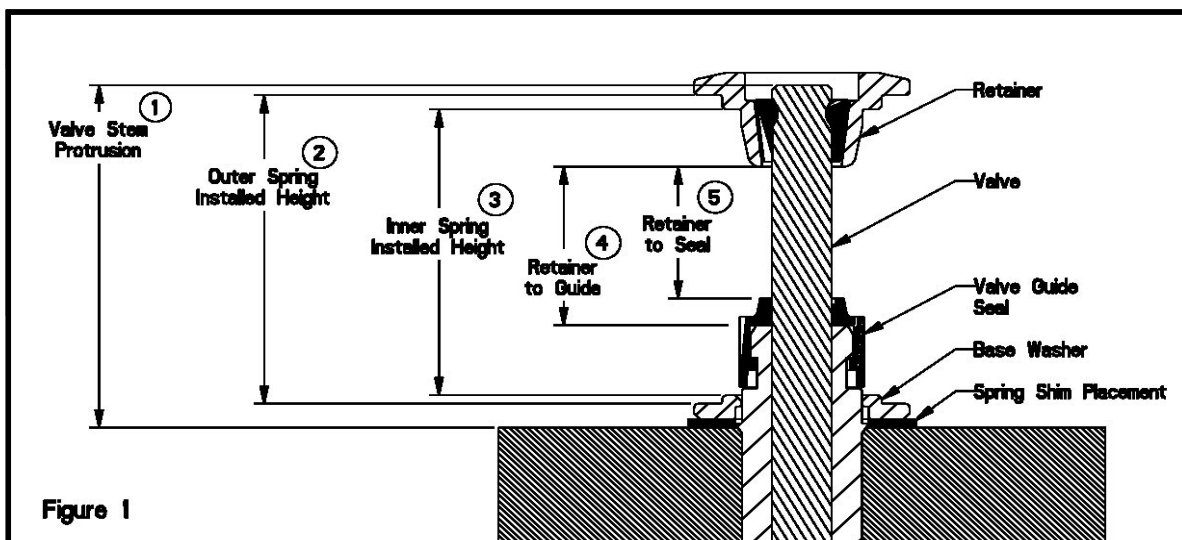
The coil bind height is determined by compressing the spring or springs with the retainer and basewasher in place, a vice can be used for this operation, once springs are compressed measure the distance between the retainer and basewasher where the outer spring contacts them.

2. Free-travel should always be gross valve lift +.060" for safe operation.
3. Retainer to seal and retainer to guide clearance should also be gross valve lift +.060" for safe operation.
4. Failure to check valve train clearances can result in serious damage to an engine

Packaged By: _____

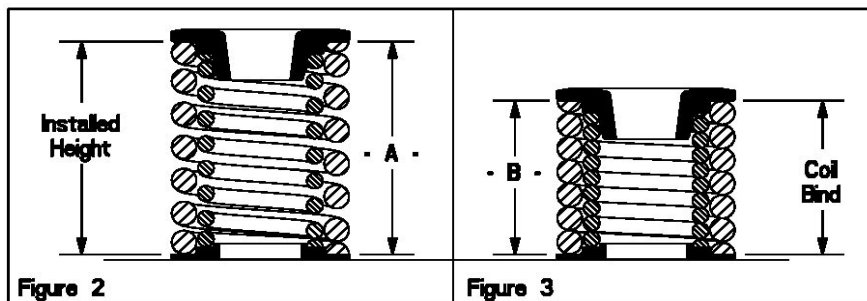
Date: _____

TECH TIPS



Valve Train Terminology

1. Stem Protrusion is measured from the tip of the valve stem to the cylinder head. See Figure 1.
2. Outer spring installed height is measured where the outer spring contacts the retainer and lower component when assembled. See Figure 1.
3. Inner spring installed height is measured where the inner spring contacts the retainer and lower component when assembled. See Figure 1.
4. Retainer to guide clearance is the distance between the valve guide (w/o the seal) and the bottom of the retainer, with the valve in the closed position. See Figure 1 and Notes 3 & 4.
5. Retainer to seal clearance is the distance between the valve stem seal and the bottom of the retainer, with the valve in the closed position. See Figure 1 and Notes 3 & 4.



Installed Height

1. In Figure 2 the installed height is measured from where the outer spring contacts the retainer and the basewasher. This measurement is taken when the valve, basewasher, retainer, and keepers are assembled in the cylinder head.

Coil Bind / Solid Height:

1. In Figure 3 the coil bind height is determined by compressing the spring or springs with the retainer and basewasher in place, a vice can be used for this operation, once springs are compressed measure the distance between the retainer and basewasher where the outer spring contacts them.

Notes:

1. The difference between the installed height and the coil bind height is considered "Free-Travel"
2. Free-travel should always be gross valve lift +.060" for safe operation.
3. Retainer to seal and retainer to guide clearance should also be gross valve lift +.060" for safe operation.
4. Failure to check valve train clearances can result in serious damage to an engine.