

ÇÖPLER GOLD MINE ROCK FALL PROJECT

ERZİNCAN, DOĞU ANADOLU, TURKEY

Surface Strengthening and Support

Problem

The Çöpler mine site is an open pit operation located 8 km away from Ilıc District of Erzincan City, approximately 550 km east of Ankara in Middle Anatolia with the capacity to process approximately 20,000 tonnes of oxide ore per day. During the extension of the waste storage area, rockfall from the rocky slopes next to the construction area forced the company to stop the construction temporarily in order to prevent damage on the membranes and to decrease the risk for the construction crew.

Solution

In accordance with the urgency of the situation, the size of the potentially dangerous rocks on the slope and in line with the technical and economic conditions, Steel Grid HR100 has been installed on the steep slopes running along the waste storage area. The total area of approximately 30,000 m² has been installed in a time period of 4-6 weeks under the cooperation with our professional mountainer crew.

Client: ANAGOLD MADENCİLİK SAN. ve TİC. A.Ş.

Designer / Consultant: MACCAFERRI TURKEY

Contractor: ANAGOLD MADENCİLİK SAN. ve TİC. A.Ş.

Products used (Qty.)

- Macarmour & Steelgrid 30.000 m²

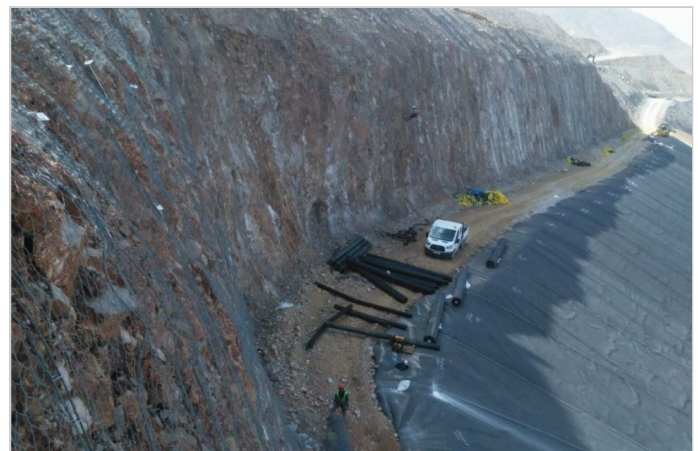
Date of construction: 12/2018 - 02/2019

[Google Maps](#)

[Google Earth](#)



Figure



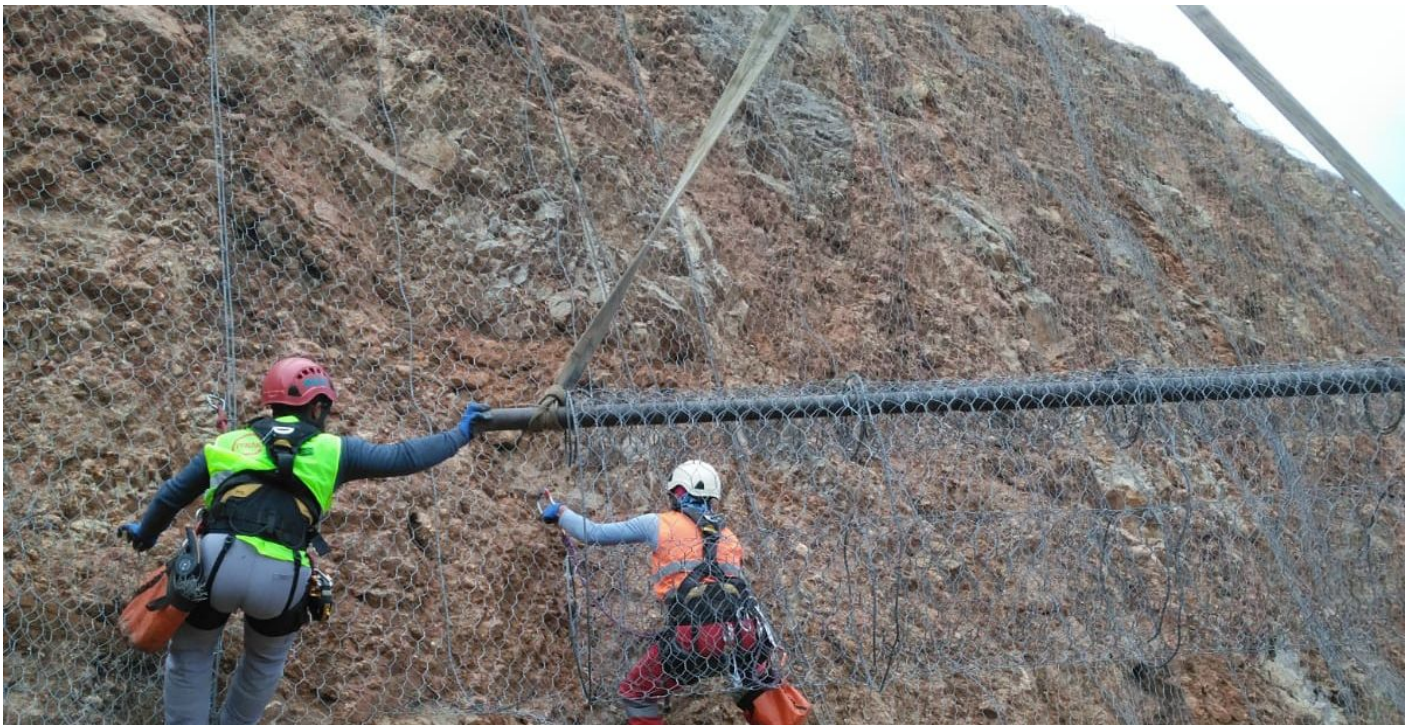
Figure



During construction



During construction



During the construction