

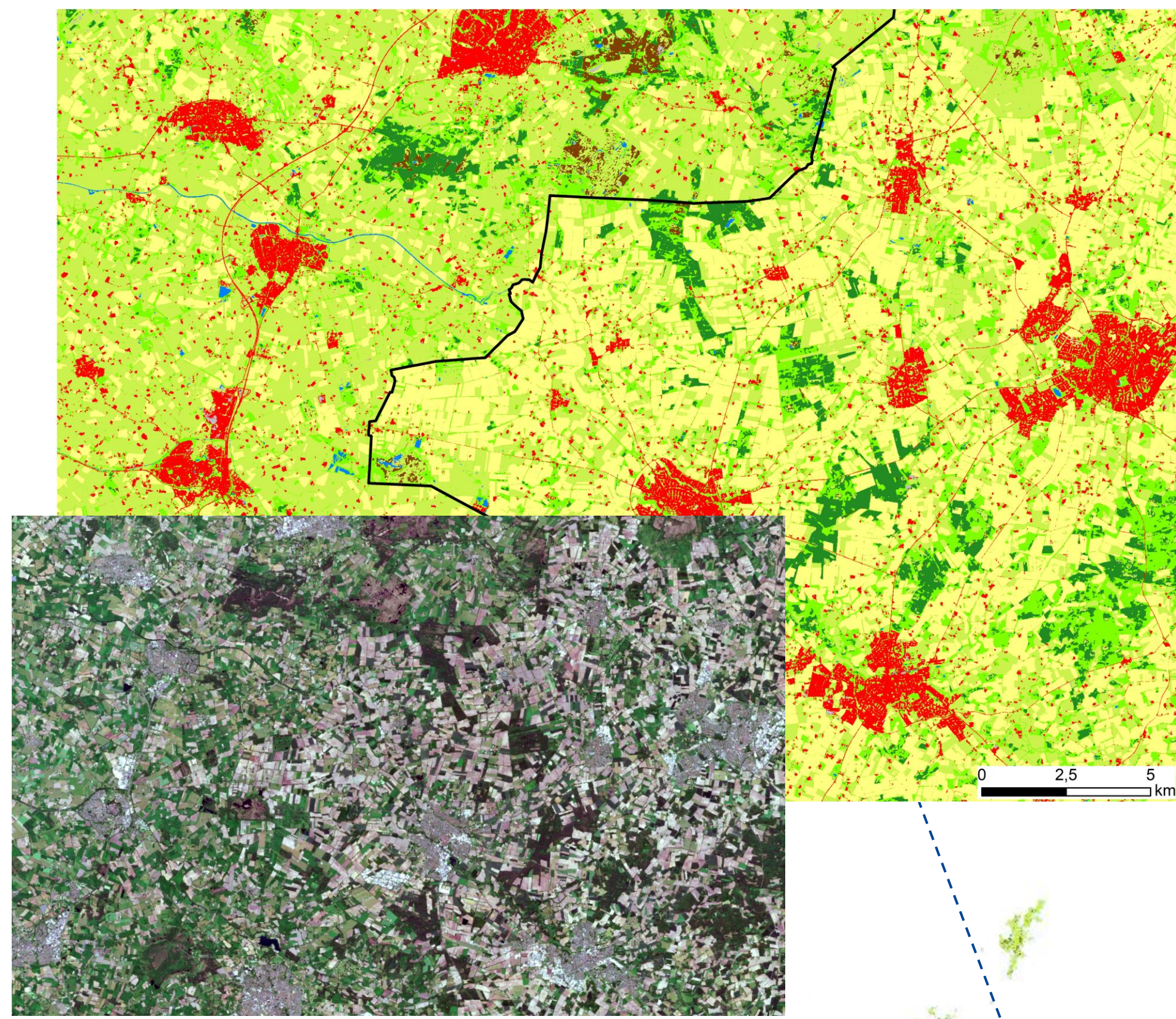
# Europe's land cover

## CLCplus Backbone products

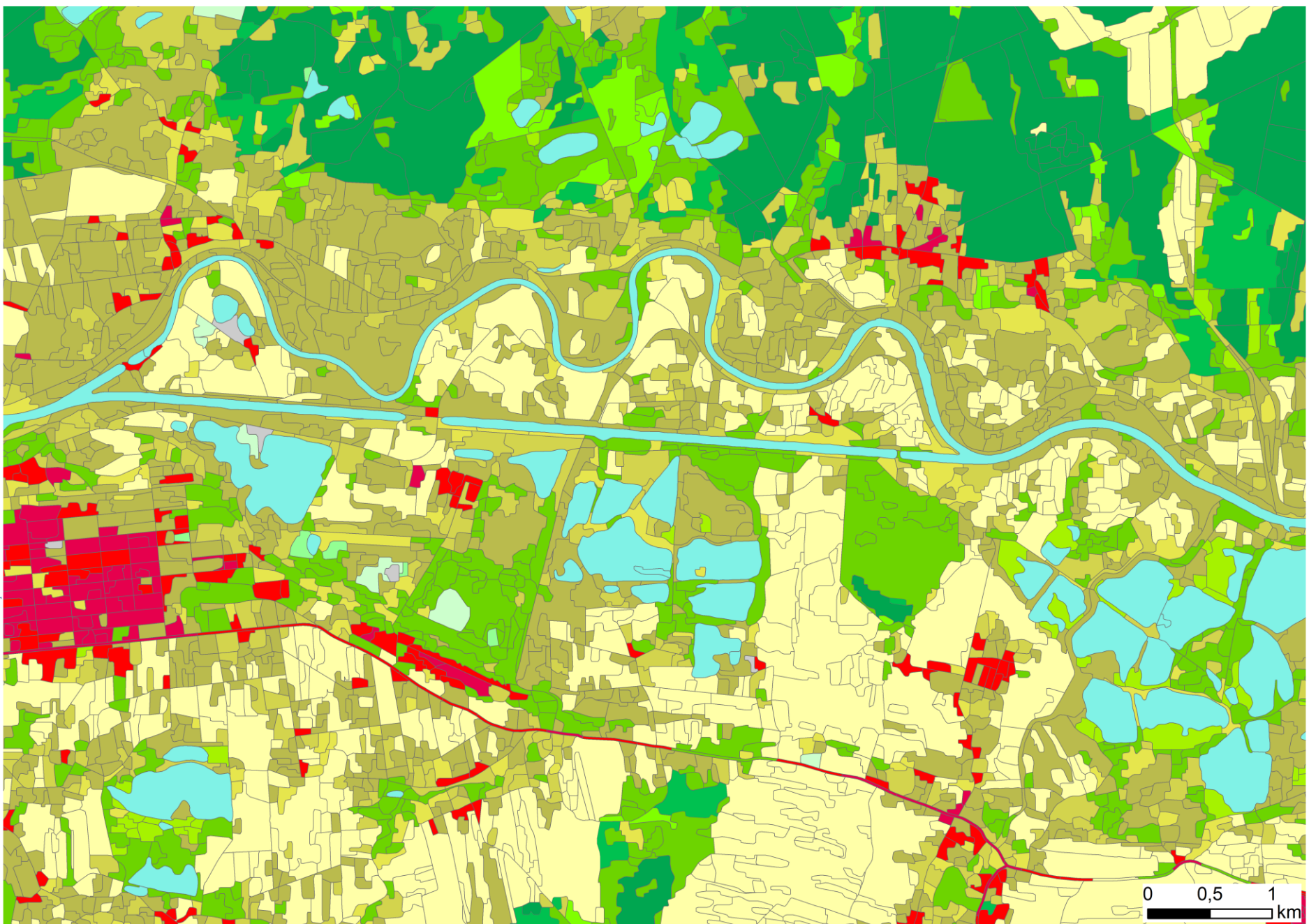
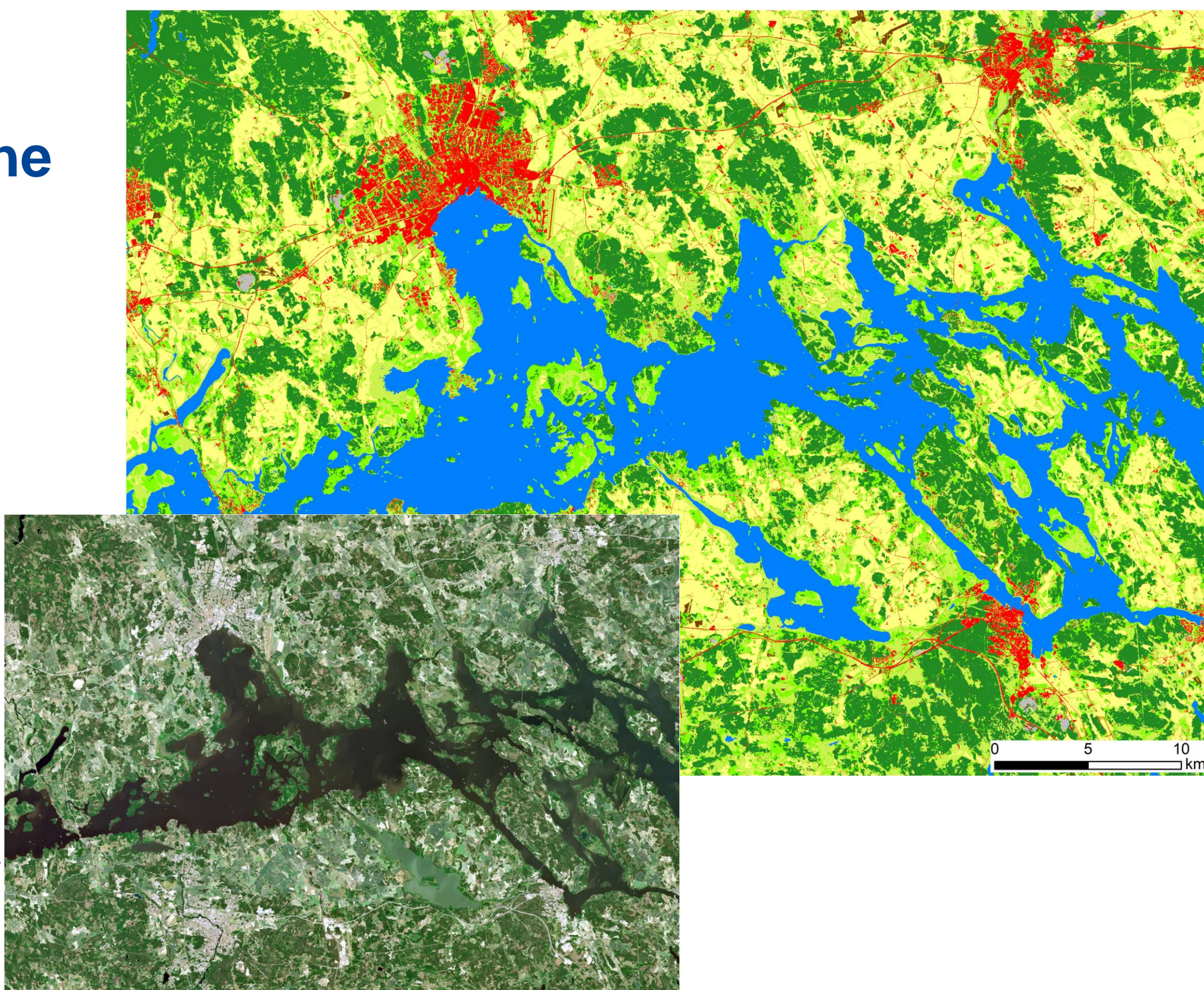
Argyle-Ross B.<sup>1</sup>, Berndt, F.<sup>2</sup> Gasber, T.<sup>1</sup>, Gritsch, M.<sup>1</sup>, Mattiuzzi, M.<sup>3</sup>, Mayr, M.<sup>3</sup>, Ruiz, I.<sup>2</sup>, Sanz, V.<sup>2</sup> & Wegscheider, S.<sup>2</sup>  
<sup>1</sup>GeoVille GmbH, Innsbruck, Austria, <sup>2</sup>GAF AG, Munich, Germany, <sup>3</sup>The European Environment Agency, Copenhagen, Denmark

CLCplus Backbone is Europe's new prime source for harmonised land cover, provided by the Copernicus Land Monitoring Service (CLMS). Its raster product complements the well-known CORINE land cover by a high-resolution (10m) perspective on 11 land cover classes and with biennial updates. Every update is based on a 18-month Sentinel-2 time series and produced using regionally trained TempCNN classifiers to achieve highest accuracies at continental scale (i.e. >85% according to recent independent validation).

**Beyond borders** – The CLCplus Backbone enables seamless, transnational land cover analysis which is critical for many applications and across domains.

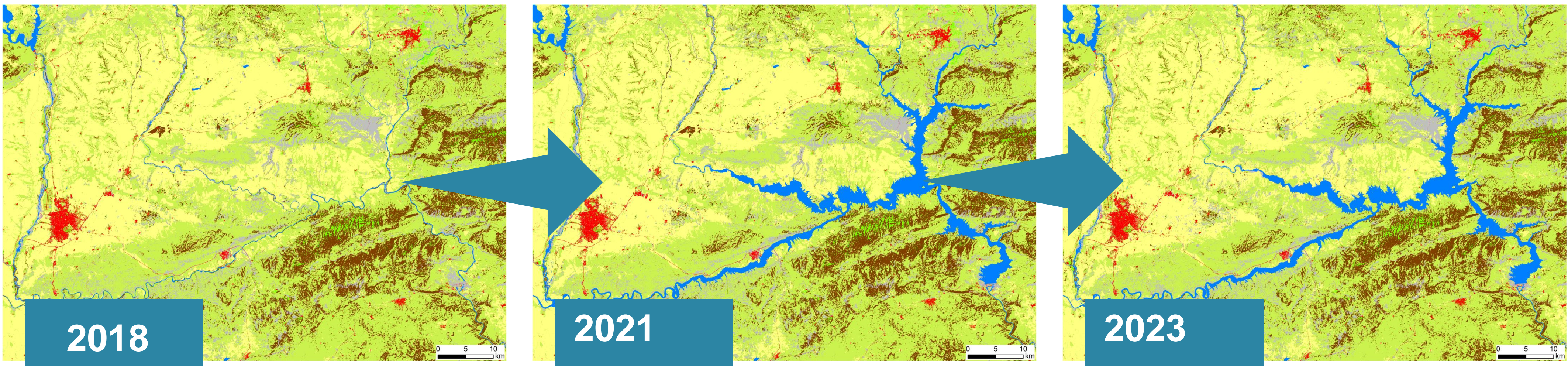


**Beyond the simple** – The CLCplus Backbone provides high detail for the monitoring of complex landscape mosaics.



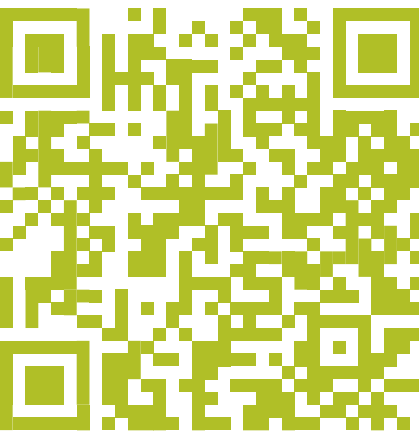
**Beyond pixels** – The CLCplus Backbone Vector (available for 2018) connects the pixel-based land cover information to real world objects and provides additional attributes for various applications.

- Sealed
- Woody needle leaved trees
- Woody broadleaved deciduous trees
- Woody broadleaved evergreen trees
- Low-growing woody plants
- Permanent herbaceous
- Periodically herbaceous
- Lichens and mosses
- Non and sparsely vegetated
- Water
- Snow and ice



**Beyond the moment** – The CLCplus Backbone offers a consistent time series, giving insights on the dynamics and evolution of European land cover.

More info about CLCplus Backbone



PROGRAMME OF THE EUROPEAN UNION



implemented by



European Commission