

Caesar Cliff residential complex

Location **Kyrenia, Esentepe**



About the project



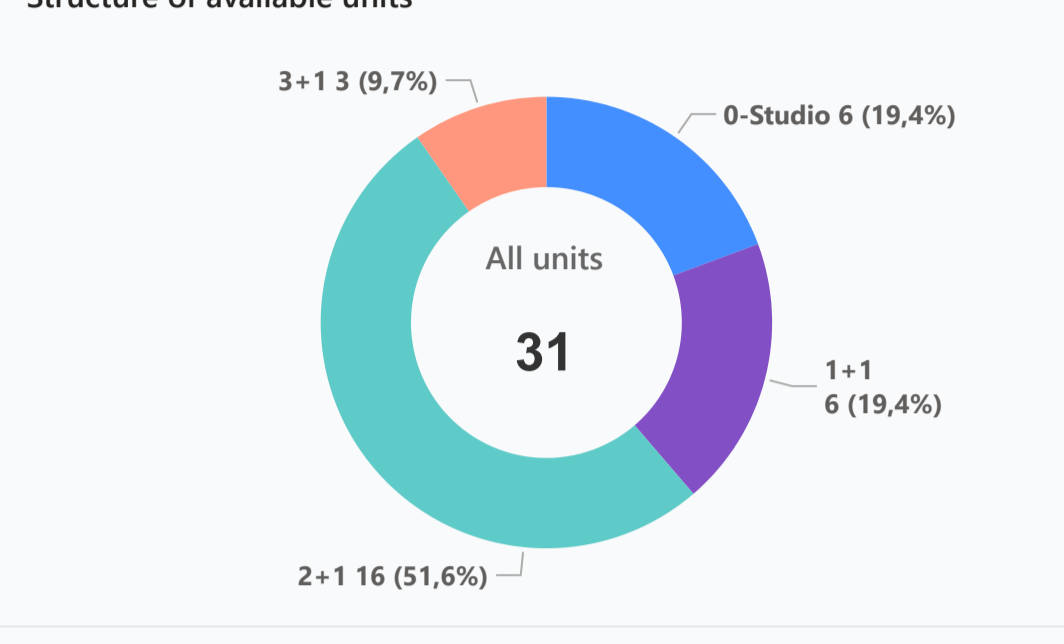
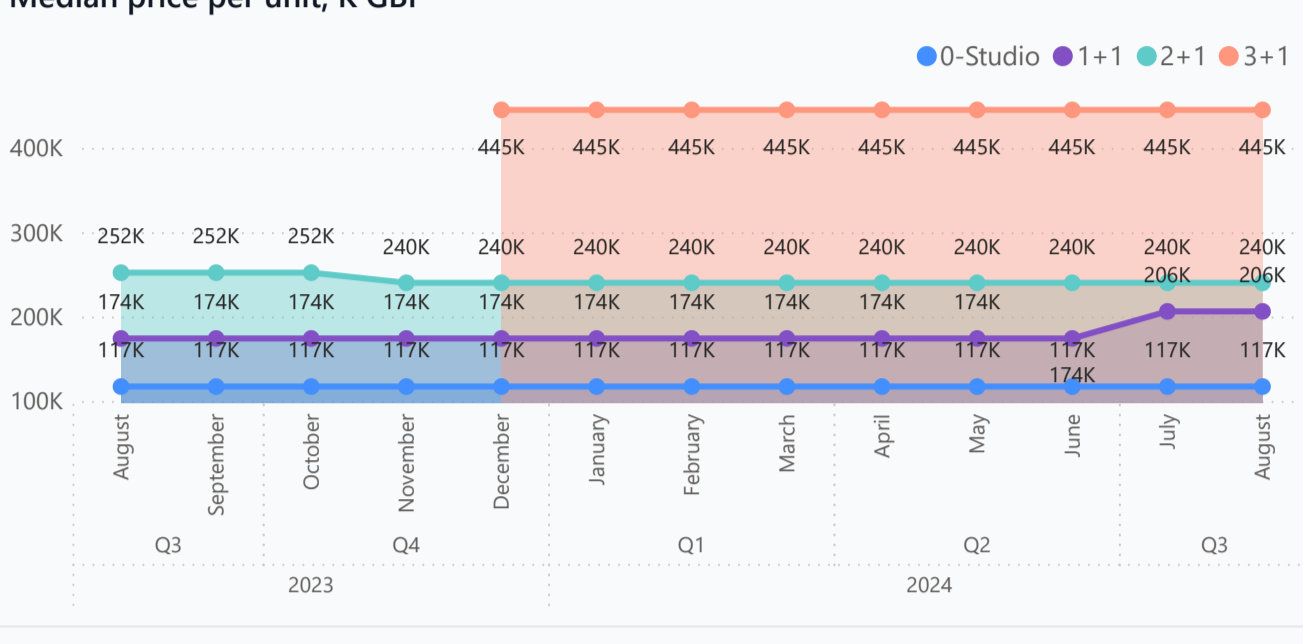
Developer	Afik
Start of sale	01.06.2020
Key handover	2025
Houses/blocks	26
Building floor	2 Min 2 Max
Units total	30 - Studio, 57 - 1+1, 15 - 2+1, 33 - 3+1
Distance to the sea	- 200 m
Distance to key locations:	26 km from the center of Kyrenia, the city of Girne, 46 km from Ercan Airport

Caesar Cliff is a modern residential complex offering apartments and semi-detached villas. Located only 100 meters away from the well-equipped beach, surrounded by breath-taking views of the Mediterranean Sea and Mountains, Caesar Cliff is the perfect place to live a peaceful life or just to enjoy a vacation.

Complex infrastructure

Bar	BBQ area	Café	Central generator	Closed territory	Hamam	Kid's playground	Kid's pool	Lounge	Maintenance office
Massage rooms	Open pool	Parking	Rental office	Restaurant	Sauna	Security Camera System	Shops	Shuttle service	Supermarket

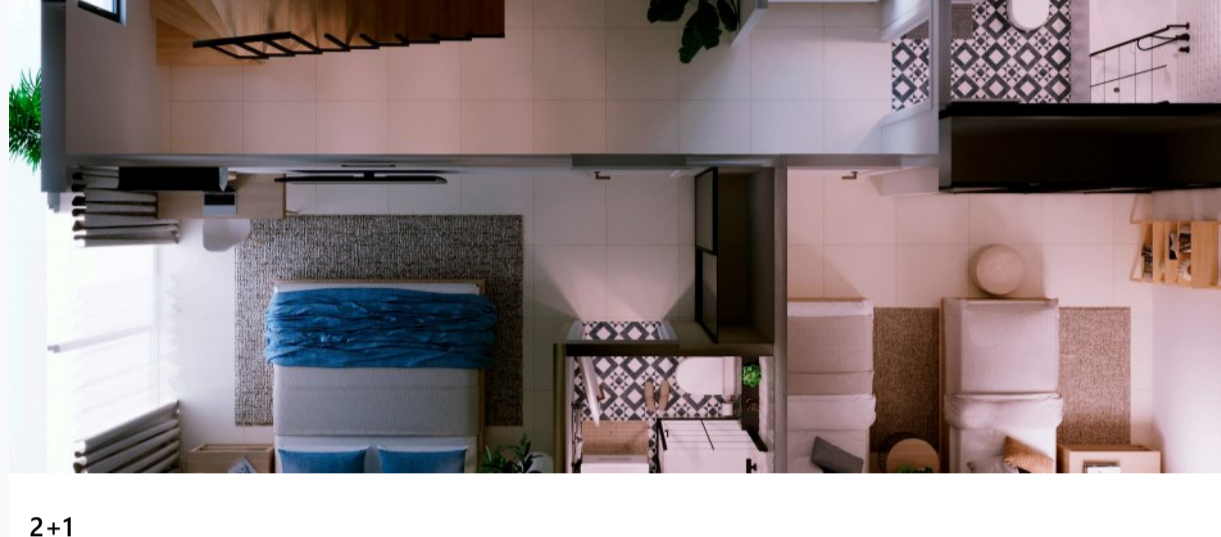
Available units 31 / 126 total



Plans



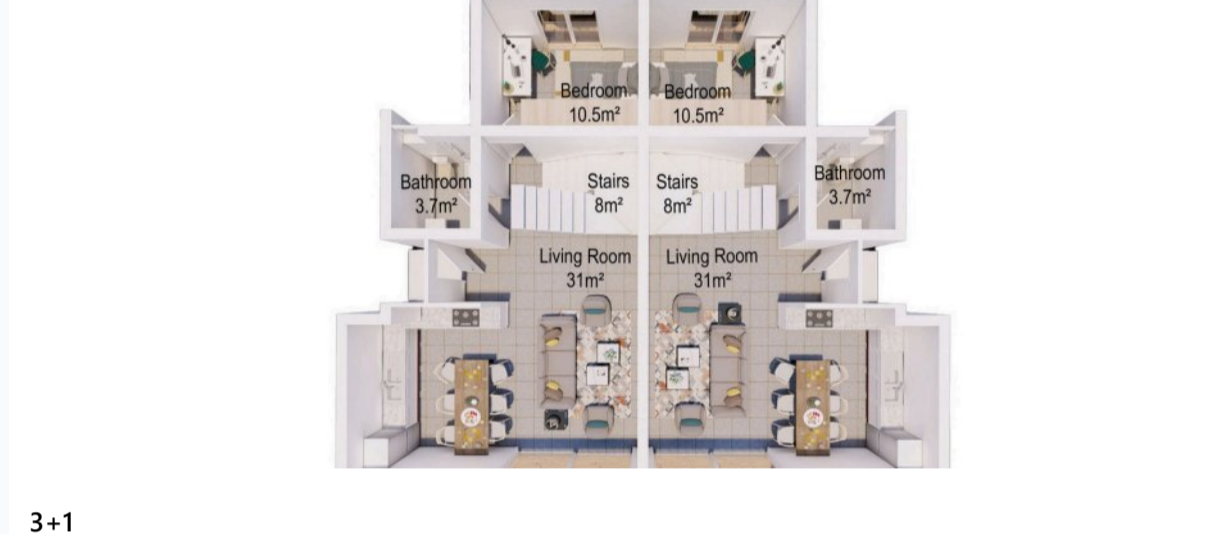
0-Studio



2+1



1+1



3+1

Payment plans

Deposit (non-refundable) 1000 GBP for 1 month

Option	Down payment	Installments months	Discount	Offer
Option 1	30%	60	-	Installment 84 m for Iolite, Zir...
Option 2	30%	12	-	Fully furnished design pac...
Option 3	100%	12	-	Design package
Option 4	-	-	-	-

Special offer

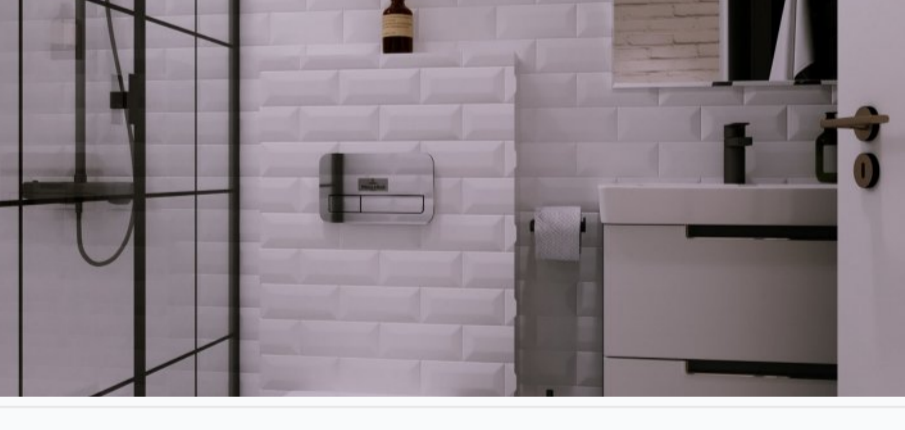
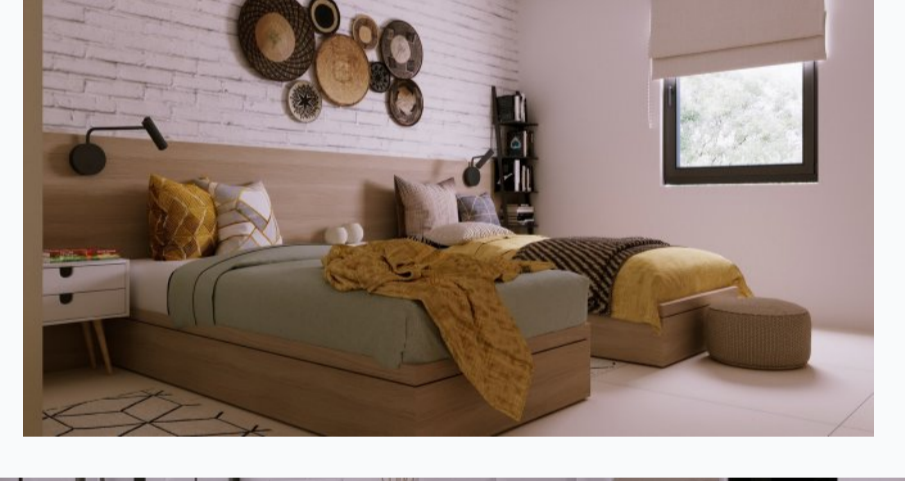
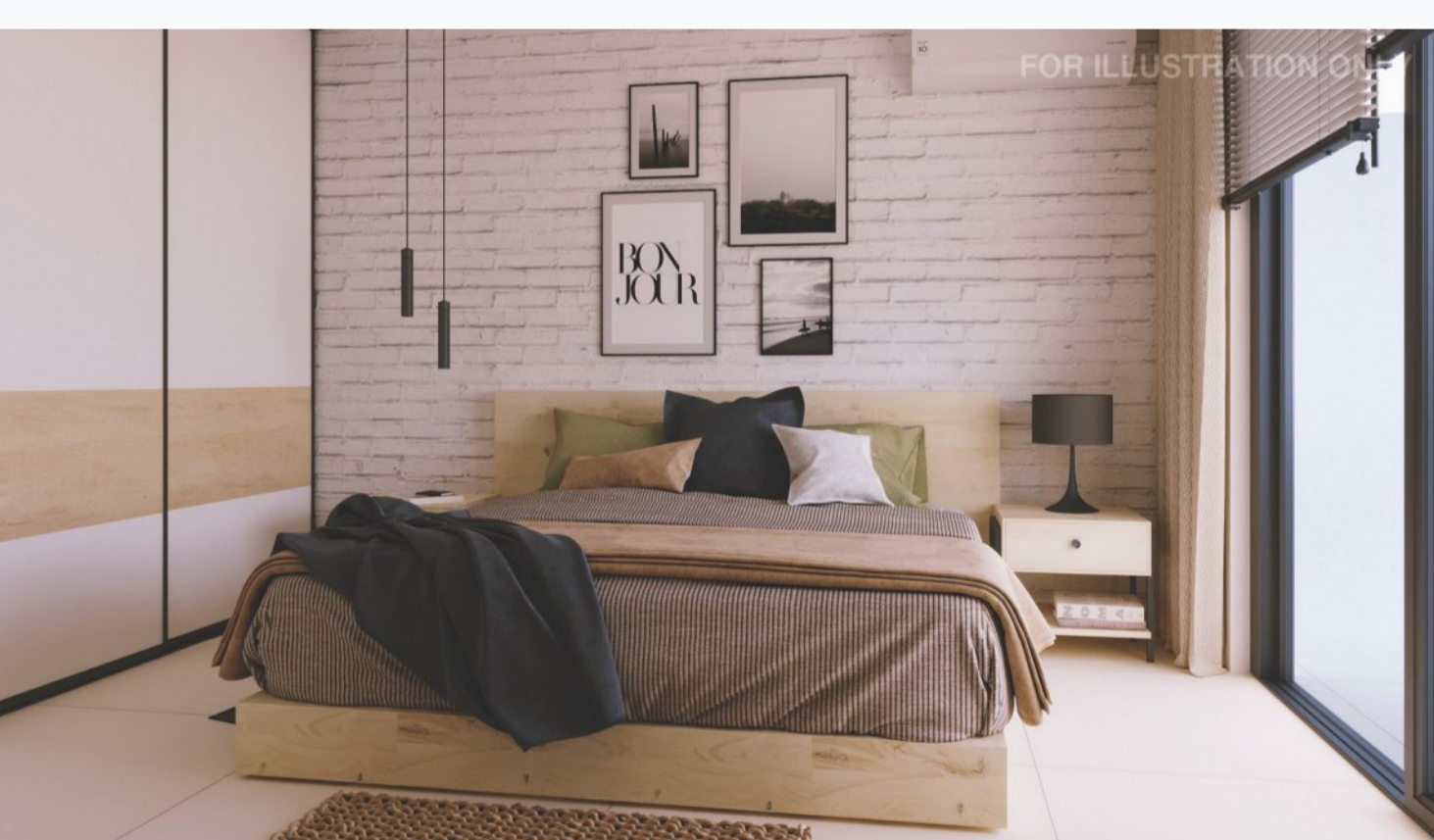
VAT + trafo within 1 year after the key	Fully furnished design package	Rental guarantee
	studio 12000 GBP, 1+1 14000 GBP, 2+1 16000 GBP, 3+1 19000 GBP, Semi-detached villa ...	-

Trafo 1500 GBP	Resale after 50%	Maintenance fee studio 840 GBP 1+1 960 GBP 2+1 1080 GBP 3+1 1140 GBP	Rental services 65/35%
----------------	------------------	--	------------------------

Details

Bedrooms	Subtype	Block	Unit №	Floor	View	Bathroom	Internal area, sq. m	Balcony/Terrace, sq. m	Rooftop terrace, sq. m	Garden, sq. m	Gross covered area, sq. m	Current price, GBP	Price per sqm, GBP
0-Studio	Flat	Zircon	3	0		1	39	11			50	117 000	2 340
0-Studio	Flat	Zircon	5	0		1	39	11			50	117 000	2 340
0-Studio	Flat	Zircon	6	0		1	39	11			50	117 000	2 340
1+1	Loft	Lapis	9	01		1	79	9			88	238 200	2 707
1+1	Loft	Lapis	8	01		1	82	9			91	246 900	2 713
1+1	Loft	Lapis	7	01		1	83	9			92	248 700	2 703
1+1	Loft	Zircon	15	01		1	58	7			65	174 000	2 677
1+1	Loft	Zircon	16	01		1	58	7			65	174 000	2 677
1+1	Loft	Zircon	17	01		1	58	7			65	174 000	2 677
2+1	Loft	Coral	2	0		2	68	14			82	240 000	2 927
2+1	Loft	Coral	3	0		2	68	14			82	240 000	2 927
2+1	Loft	Coral	6	0		2	70	14			84	240 000	2 857
2+1	Loft	Coral	7	0		2	70	14			84	240 000	2 857
2+1	Loft	Coral	4	0		2	70	23			93	240 000	2 581
2+1	Flat	Iolite	0-1	0		2	84	19			103	252 000	2 447
2+1	Flat	Iolite	7	0		2	84	19			103	252 000	2 447
2+1	Loft	Nellite	13	01		2	85	6			91	300 000	3 297
2+1	Loft	Nellite	12	01		2	84	8			92	300 000	3 261
2+1	Loft	Titanium	2	0		2	68	14			82	240 000	2 927
2+1	Loft	Titanium	3	0		2	68	14			82	240 000	2 927
2+1	Loft	Titanium	1	0		2	70	14			84	240 000	2 857
2+1	Loft	Titanium	6	0		2	70	14			84	240 000	2 857
2+1	Loft	Titanium	7	0		2	70	14			84	240 000	2 857
2+1	Loft	Titanium	5	0		2	70	23			93	240 000	2 581
2+1	Flat	Zircon	0-1	0		2	84	19			103	252 000	2 447
3+1	Semi-Detached Villa	Semi Detached	3-L	0		3	120				120	445 000	3 708
3+1	Semi-Detached Villa	Semi Detached	8-R	0		3	120				120	445 000	3 708
3+1	Semi-Detached Villa	Semi Detached	12-L	0		3	125				125	445 000	3 560

Interior specification



Artificial stone kitchen countertop	Ceramic flooring	Double glazed windows	High quality internal doors	High quality taps and showers	Toilet integrated in the walls
-------------------------------------	------------------	-----------------------	-----------------------------	-------------------------------	--------------------------------

Exterior specification



Glass fence balcony	Heat & sound insulation	Landscape design	Spacious balcony	Terracing with inbuilt lighting & power sockets
---------------------	-------------------------	------------------	------------------	---

Location of complex

