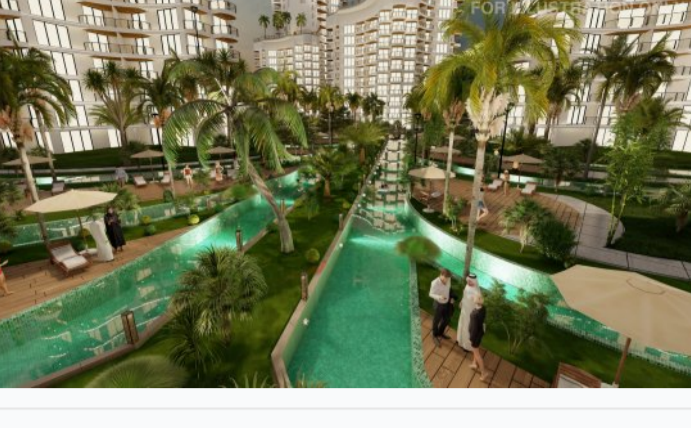


Caesar Palm Jumeirah residential complex

Location **Iskele, Diklarpaz**



About the project



Developer	Afik
Start of sale	01.06.2024
Key handover	2027
Houses/blocks	5
Building floor	19 Min 19 Max
Units total	162 - Studio, 426 - 1+1, 102 - 2+1

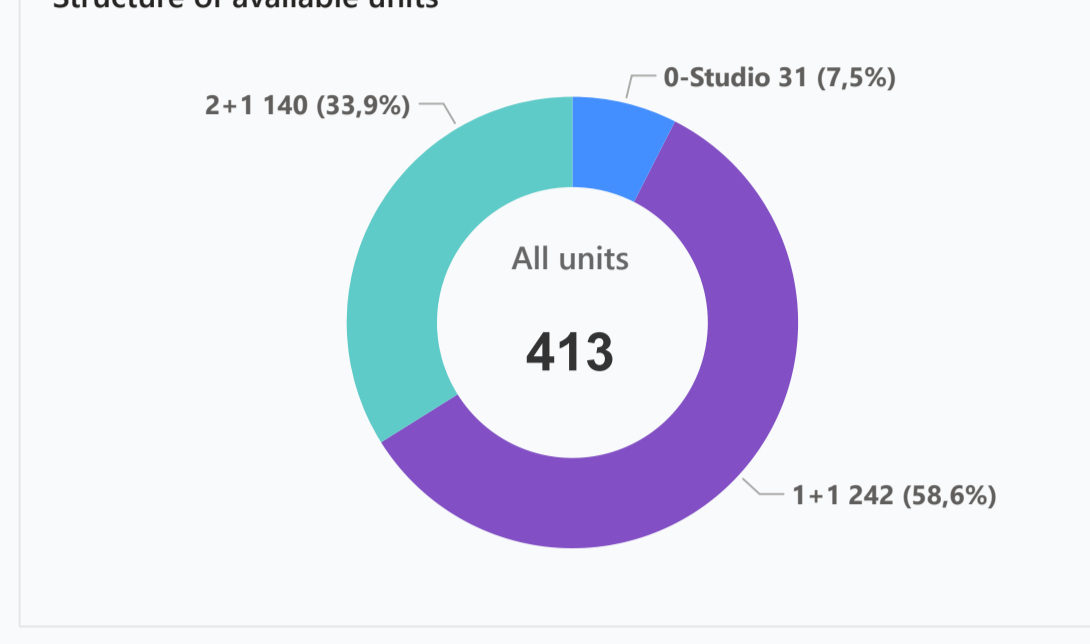
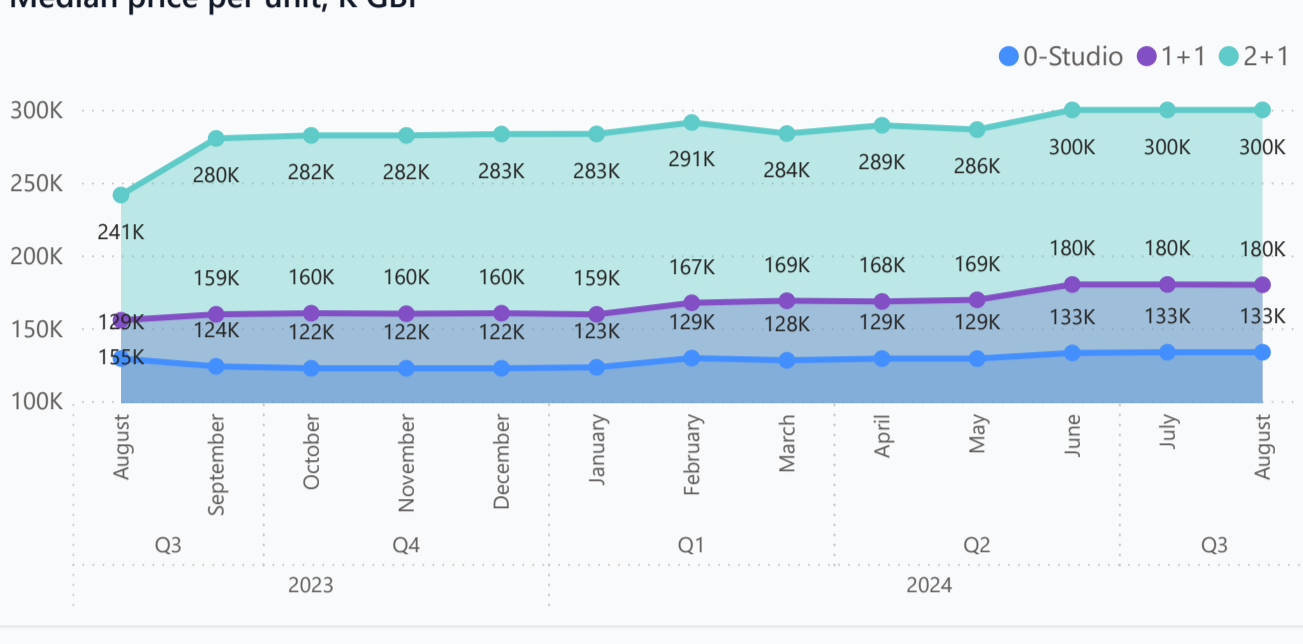
Distance to the sea - 300 m
 Distance to key locations:
 Airport 60 min. Supermarket 5 min. Hospital 12 min. School 12 min. Kindergarten 12 min. Shopping center 5 min.

The project, Caesar Palm Jumeirah is a great possibility to experience the atmosphere of Dubai right in Northern Cyprus, just 300 meters from the sandy site in the Boaz area. The project includes 7 multi-storey buildings at different stages of construction. The complex is equipped with a palm-shaped swimming pool, gardens, fountains, separate pools, as well as separate rooftop pools and recreation areas for each building. Other outstanding facilities include an Arabic restaurant, a cozy lounge bar with hookahs, a beautiful fountain and garden.

Complex infrastructure

24/7 reception	Aqua park	Bar	BBQ area	Beauty salon	Café	Central generator	Closed territory	Exchange Office	Fitness centre
Hamam	Indoor pool	Kid's play room	Kid's playground	Kid's pool	Laundry	Lobby	Lounge	Maintenance office	Massage rooms
Open pool	Parking	Pharmacy	Rental office	Restaurant	Sauna	Security Camera System	Shops	Shuttle service	Supermarket

Available units 413 / 872 total



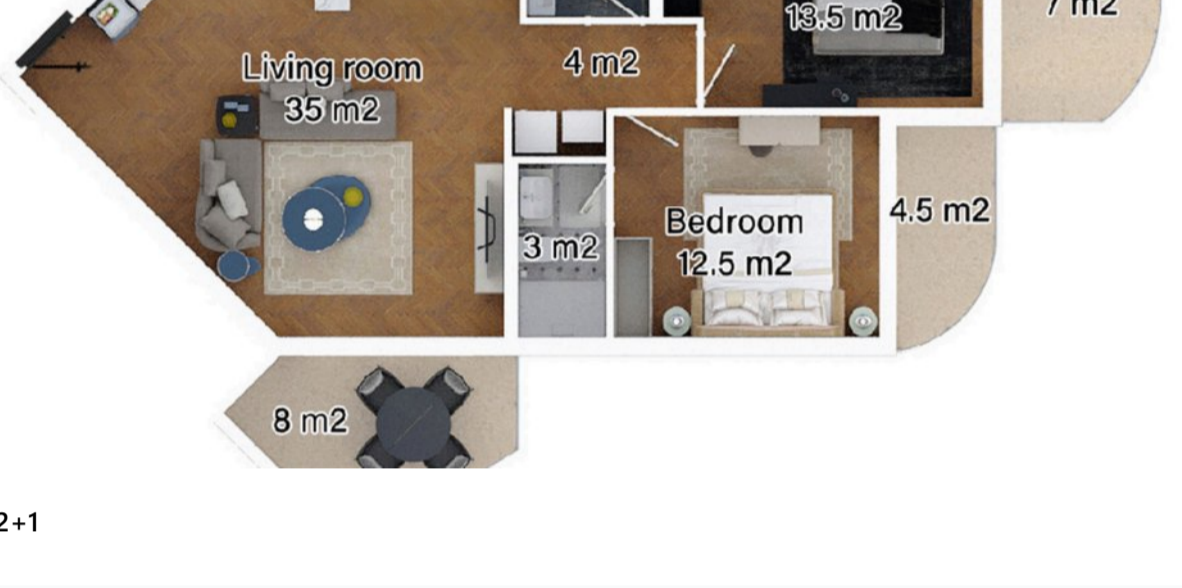
Plans



0-Studio



1+1



2+1

Payment plans

Deposit (non-refundable) 1000 GBP for 1 month

Option	Down payment	Installments months	Discount	Offer
Option 1	30 %	84	-	-
Option 2	40 %	36% till key	-	24% covered by rental guar...
Option 3	50 %	50% till key	-	Cashback 6% annually till key
Option 4	-	-	-	-

Special offer

VAT + trafo within 1 year after the key	Fully furnished design package studio 10000 GBP, 1+1 12000 GBP, 2+1 14000 GBP	Rental guarantee 8% for 3 years
---	---	---

Trafo 1500 GBP Resale after 50% Maintenance fee studio 1000 GBP 1+1 1200 GBP 2+1 1350 GBP 3+1 1500 GBP Rental services 65/35%

Details

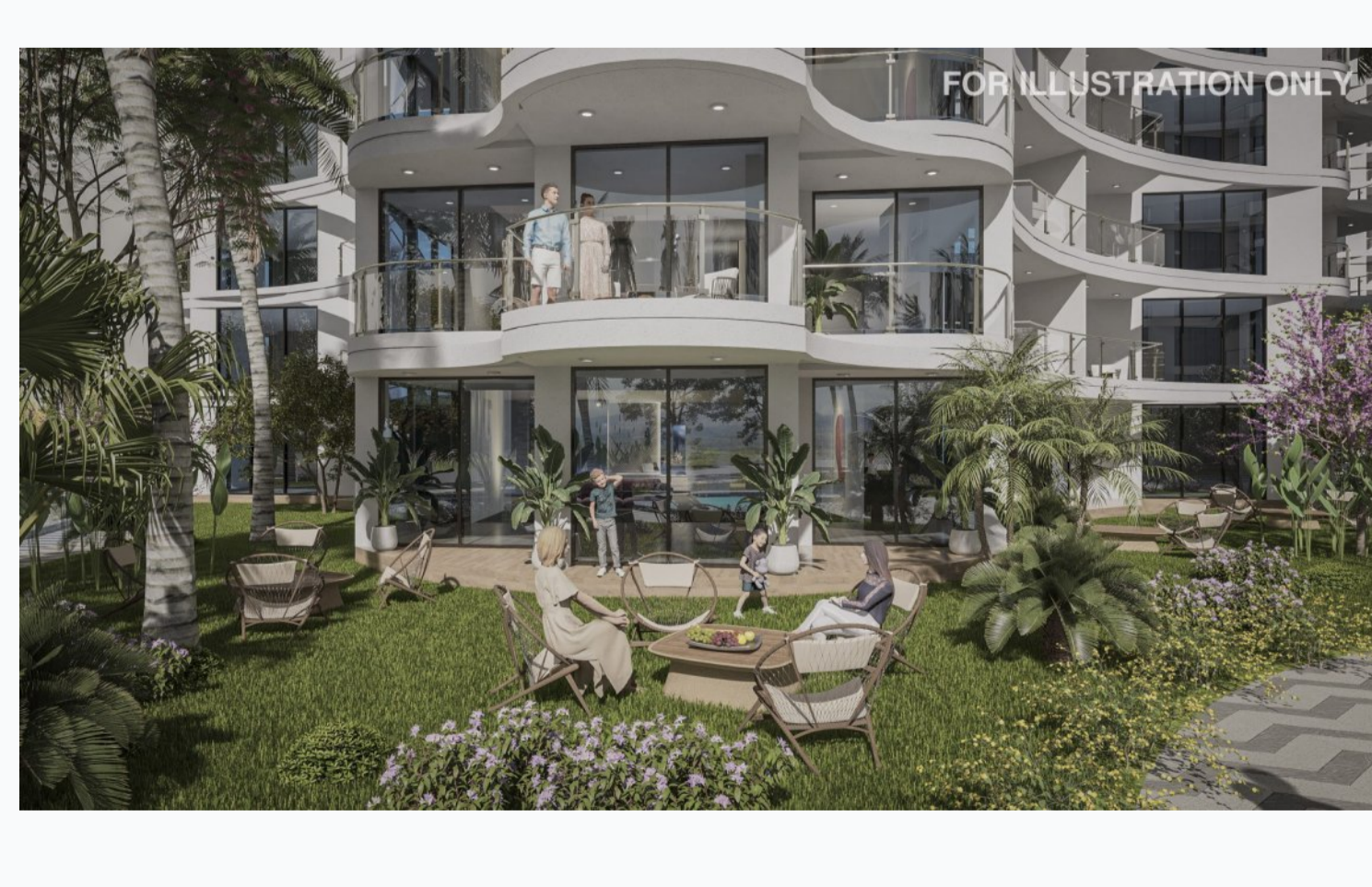
Bedrooms	Subtype	Block	Unit №	Floor	View	Bathroom	Internal area, sq. m	Balcony/ Terrace, sq. m	Rooftop terrace, sq. m	Garden, sq. m	Gross covered area, sq. m	Current price, GBP	Price per sqm, GBP
0-Studio	Flat	Jamila	308	03		1	45	8			53	148 394	2 800
0-Studio	Flat	Jamila	402	04		1	45	8			53	121 204	2 287
0-Studio	Flat	Jamila	408	04		1	45	8			53	150 677	2 843
0-Studio	Flat	Jamila	411	04		1	45	8			53	150 677	2 843
0-Studio	Flat	Jamila	502	05		1	45	8			53	123 024	2 321
0-Studio	Flat	Jamila	505	05		1	45	8			53	146 308	2 761
0-Studio	Flat	Jamila	508	05		1	45	8			53	152 959	2 886
0-Studio	Flat	Jamila	511	05		2	45	8			53	152 959	2 886
0-Studio	Flat	Khadjja	208	02		1	45	8			53	127 055	2 397
0-Studio	Flat	Khadjja	308	03		1	45	8			53	129 039	2 435
0-Studio	Flat	Khadjja	1302	13		1	45	8			53	161 400	3 045
0-Studio	Flat	Leila	308	03		1	45	8			53	129 039	2 435
0-Studio	Flat	Leila	411	04		1	45	8			53	125 814	2 374
0-Studio	Flat	Leila	1105	11		1	45	8			53	257 645	4 861
0-Studio	Flat	Leila	1202	12		1	45	8			53	123 416	2 329
0-Studio	Flat	Malika	802	08		1	45	8			53	133 421	2 517
1+1	Flat	Aisha	109	01		1	65	10			75	169 800	2 264
1+1	Flat	Aisha	112	01		1	59	11			70	165 390	2 363
1+1	Flat	Aisha	309	03		1	65	10			75	173 580	2 314
1+1	Flat	Aisha	307	03		1	59	11			70	157 800	2 254
1+1	Flat	Aisha	403	04		1	65	10			75	147 225	1 963
1+1	Flat	Aisha	409	04		1	65	10			75	175 470	2 340
1+1	Flat	Aisha	603	06		1	65	10			75	150 375	2 005
1+1	Flat	Aisha	703	07		1	65	10			75	151 950	2 026
1+1	Flat	Aisha	707	07		1	65	10			75	181 140	2 415
1+1	Flat	Aisha	701	07		1	59	11			70	163 542	2 336
1+1	Flat	Aisha	803	08		1	65	10			75	159 525	2 127
1+1	Flat	Aisha	807	08		1	65	10			75	183 030	2 440

Interior specification



Air Conditioner	Artificial stone kitchen countertop	Ceramic flooring	Double glazed windows	High quality furniture in bathrooms	High quality internal doors	High quality taps and showers	Toilet integrated in the walls	Underfloor heating	Underfloor heating in bathrooms
-----------------	-------------------------------------	------------------	-----------------------	-------------------------------------	-----------------------------	-------------------------------	--------------------------------	--------------------	---------------------------------

Exterior specification



Glass fence balcony	Heat & sound insulation	Landscape design	Spacious balcony	Terracing with inbuilt lighting & power sockets
---------------------	-------------------------	------------------	------------------	---

Location of complex

