

Caesar Resort 8 residential complex

Location **Iskele, Long Beach**



About the project



Developer	Afik
Start of sale	01.09.2022
Key handover	2026
Houses/blocks	13
Building floor	11 Min 12 Max
Units total	445 - Studio, 443 - 1+1, 414 - 2+1, 8 - 3+1

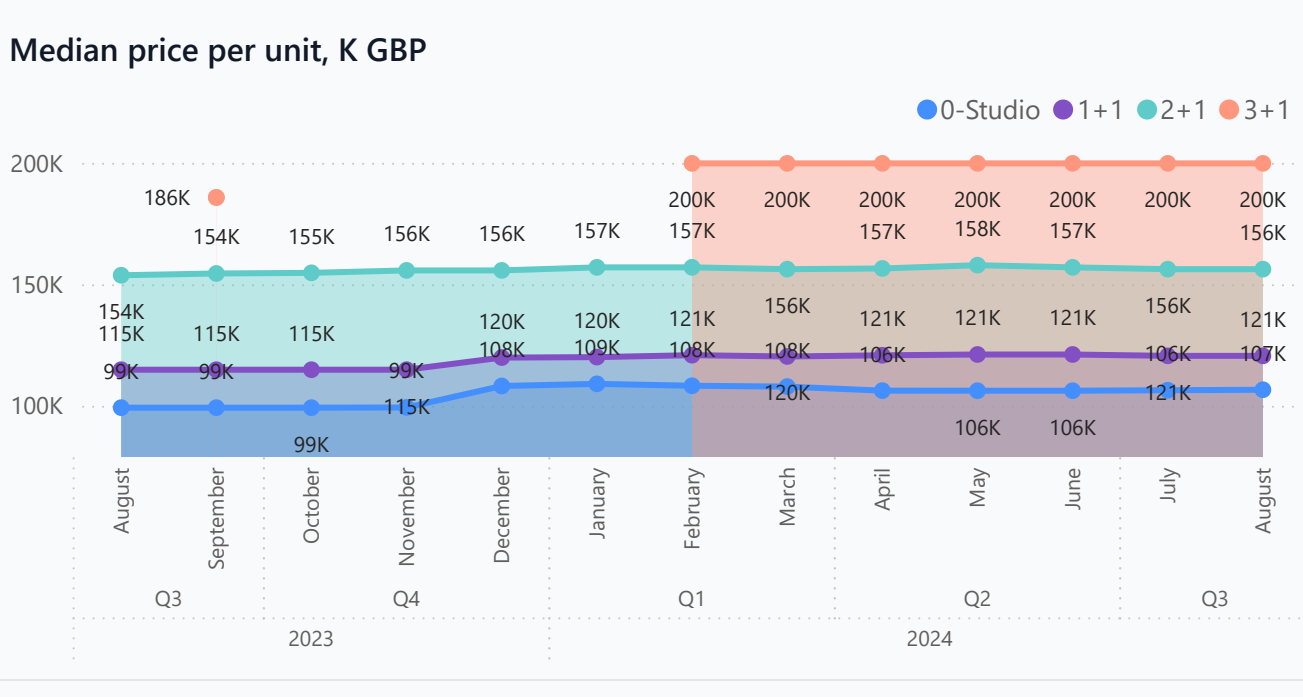
Distance to the sea - 800 m
 Distance to key locations:
 historical center of Famagusta - 15 min; Ercan airport - 45 min

Surrounded by fragrant flowers and lush trees, this modern high-rise development is located 600 meters from a scenic sandy beach. Caesar Resort offers a wide range of facilities, suitable for vacation homes and permanent residences. Don't miss out on the landscape design - 17 000 square metres of green lawns, flowerbeds, and charming alleys make this development a paradise on earth.

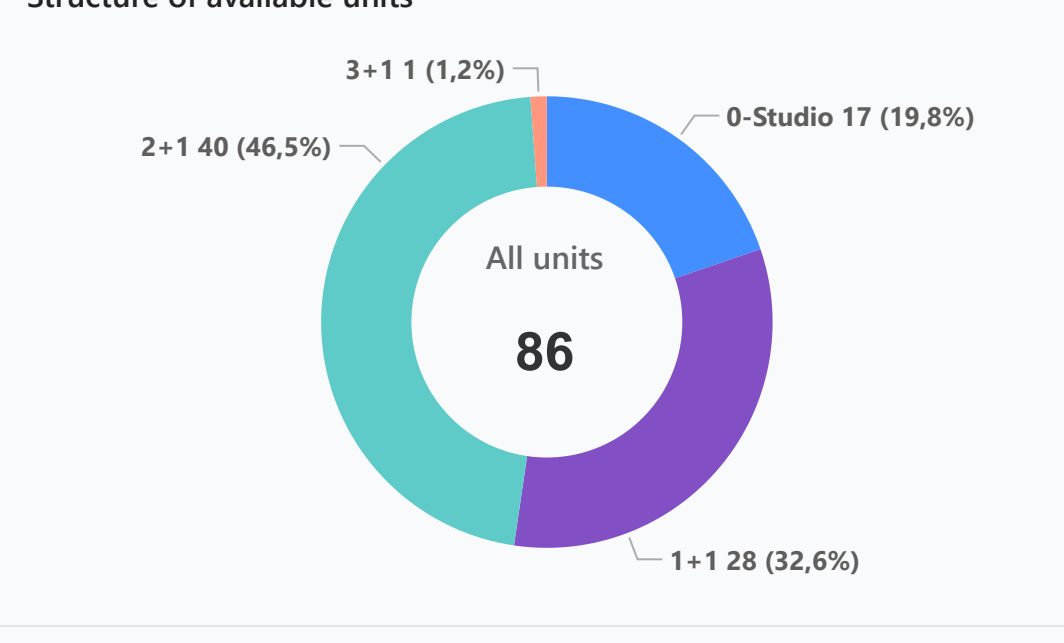
Complex infrastructure

Bar	BBQ area	Beauty salon	Café	Central generator	Closed territory	Exchange Office	Fitness center	Hamam	Indoor pool
Kid's play room	Kid's playground	Kid's pool	Laundry	Lounge	Maintenance office	Massage rooms	Open pool	Parking	Pharmacy
Rental office	Restaurant	Sauna	Security Camera System	Shops	Shuttle service	Supermarket			

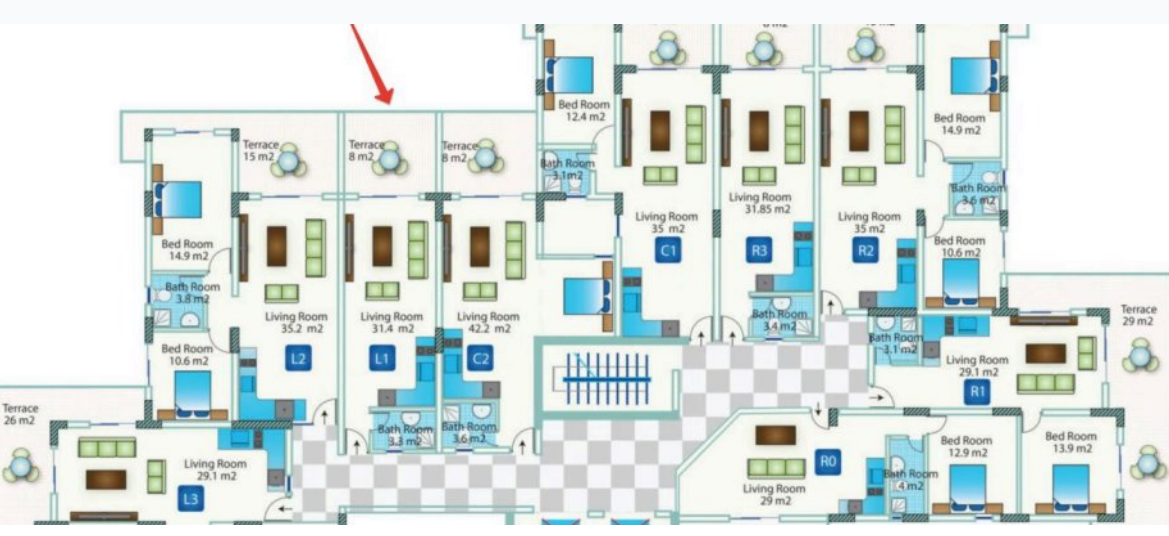
Available units 86 / 1 310 total



Structure of available units



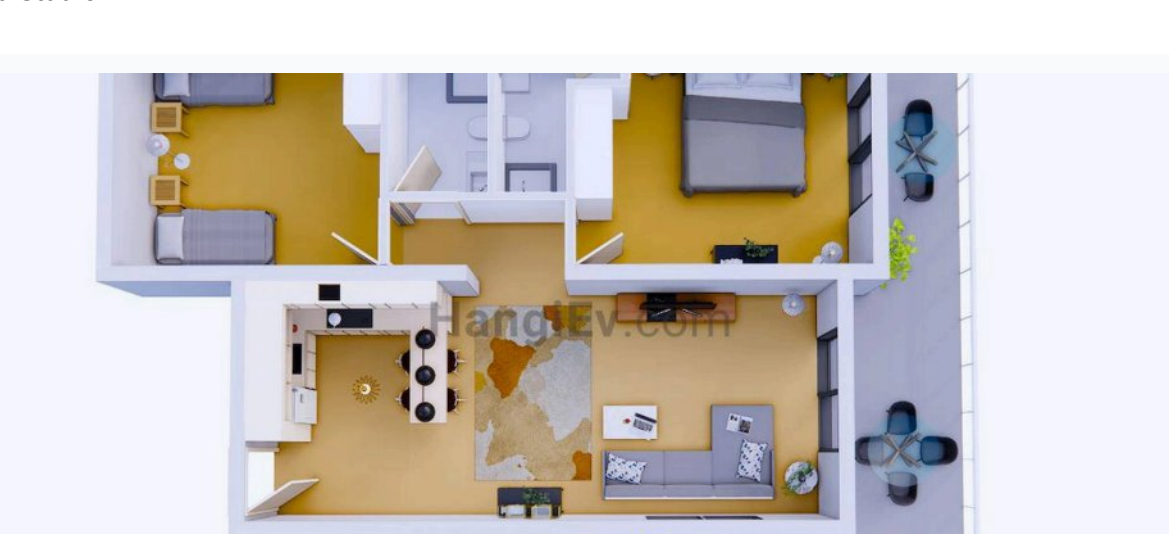
Plans



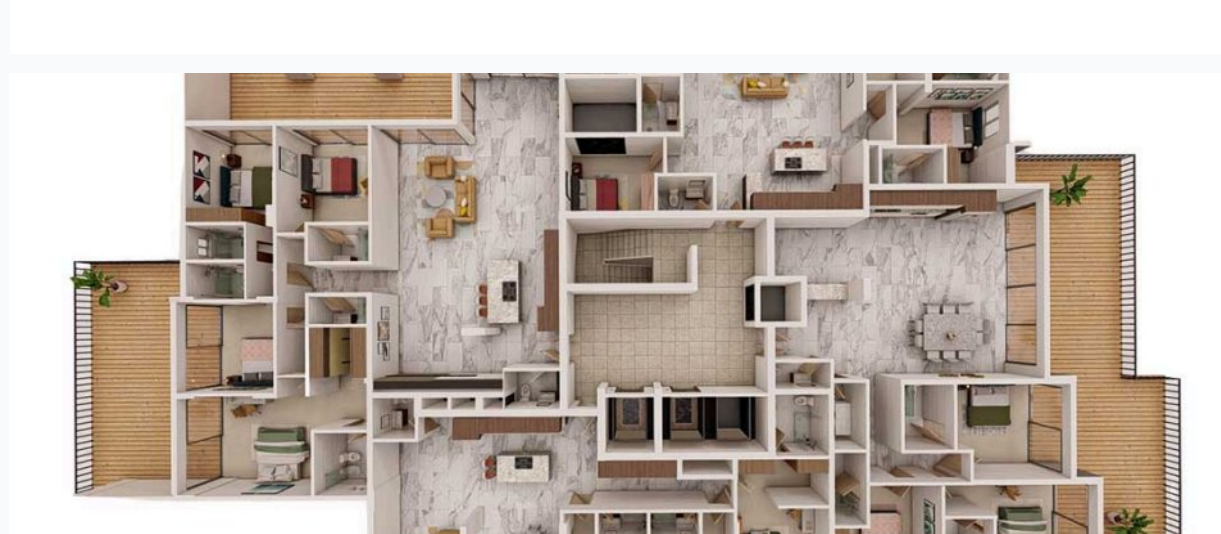
0-Studio



1+1



2+1



3+1

Payment plans

Deposit (non-refundable) 1000 GBP for 1 month

Option	Down payment	Installments months	Discount	Offer
Option 1	30 %	60	-	-
Option 2	50 %	50% till key	2,5 %	-
Option 3	-	-	-	-
Option 4	-	-	-	-

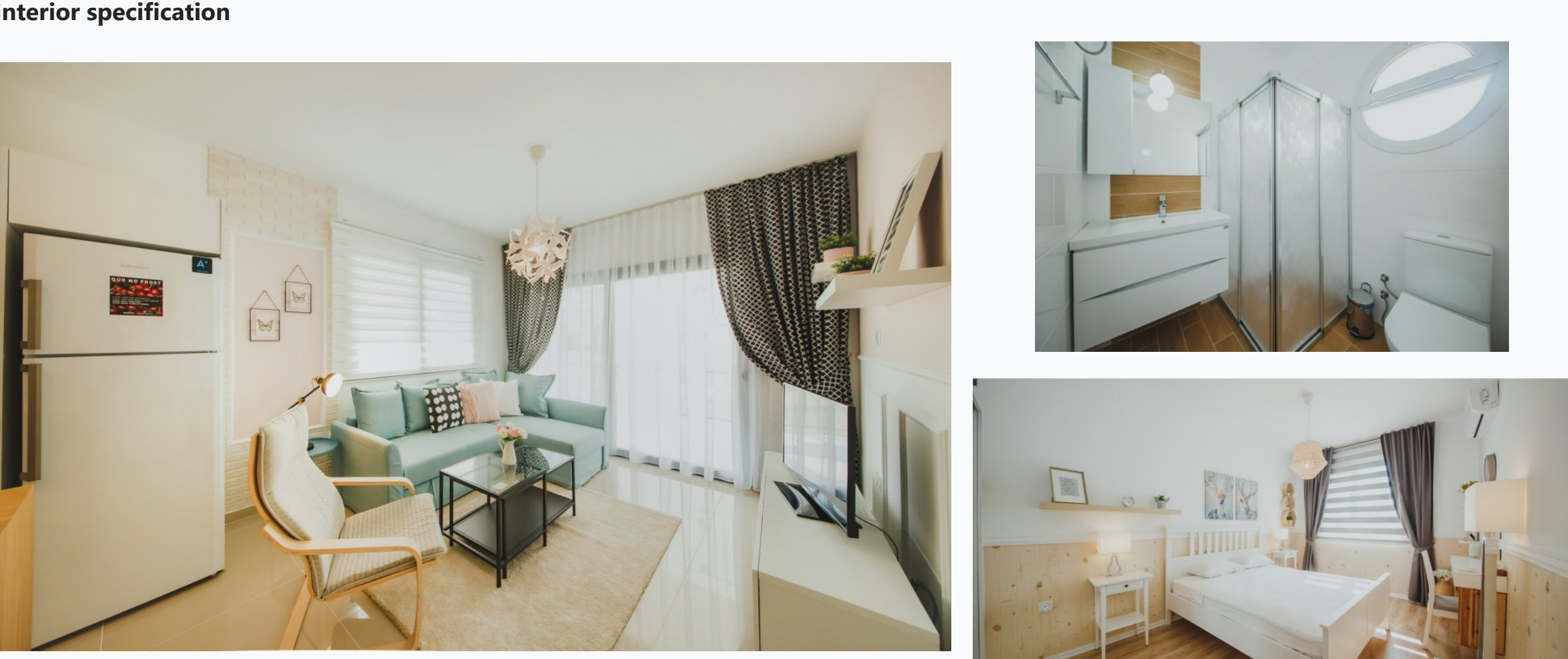
Special offer

VAT + trafo within 1 year after the key	Fully furnished design package	Rental guarantee
Trafo 1500 GBP	studio 9000 GBP, studio with niche/semi 10000 GBP, 1+1 11000 GBP, 2+1 13000 GBP	-
Resale after 50%	Maintenance fee studio 720 GBP studio with niche/semi 1 756 GBP 1+1 780 GBP 2+1 900 GBP 3+1 960 GBP	Rental services 65/35%

Details

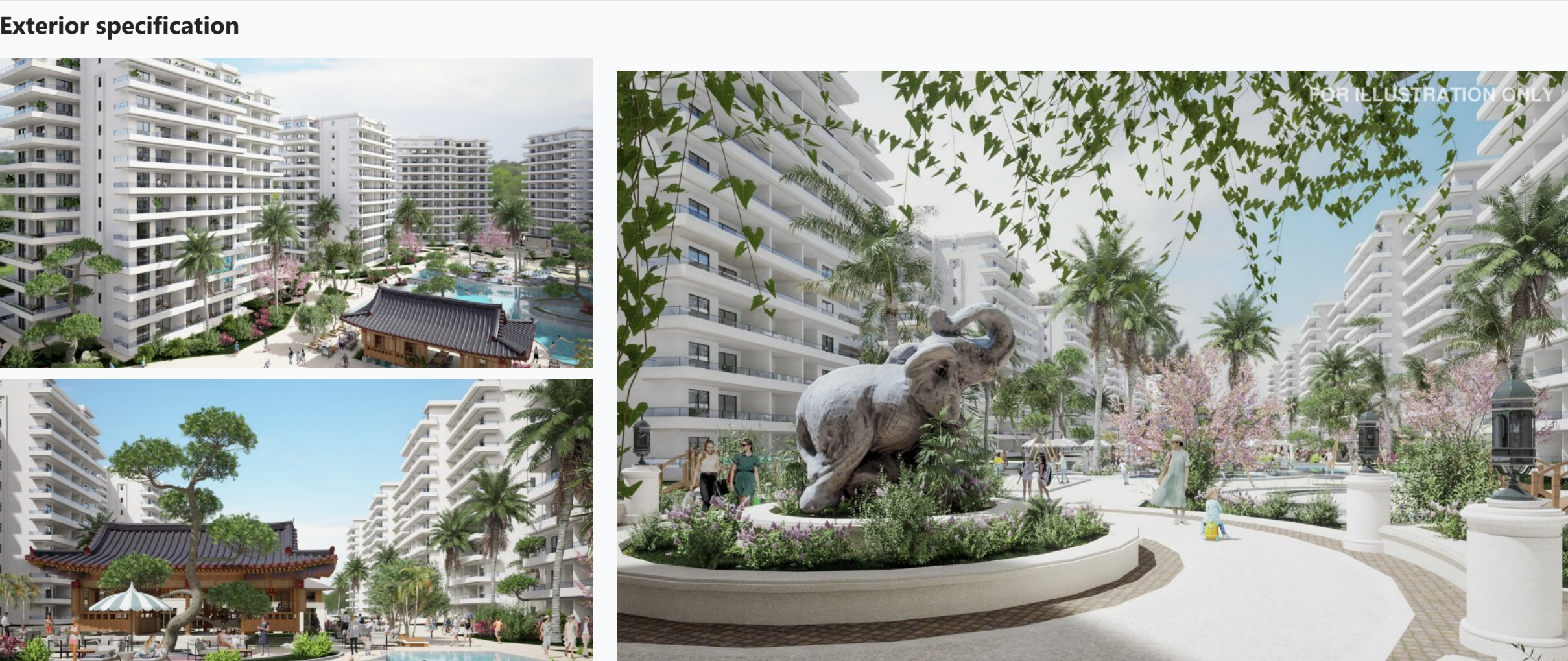
Bedrooms	Subtype	Block	Unit №	Floor	View	Bathroom	Internal area, sq. m	Balcony/ Terrace, sq. m	Rooftop terrace, sq. m	Garden, sq. m	Gross covered area, sq. m	Current price, GBP	Price per sqm, GBP
0-Studio	Flat	Koh He	A-94	10		1	46	8			54	107 720	1 995
0-Studio	Flat	Koh He	A-97	10		1	46	8			54	107 720	1 995
0-Studio	Flat	Koh Lipe	A-67	07		1	46	8			54	106 000	1 963
0-Studio	Flat	Koh Lipe	A-70	07		1	46	8			54	106 600	1 974
0-Studio	Flat	Koh Lipe	A-76	08		1	46	8			54	107 888	1 998
0-Studio	Flat	Koh Lipe	A-85	09		1	46	8			54	108 503	2 009
0-Studio	Flat	Koh Mak	A-96	10		1	56	8			64	120 757	1 887
0-Studio	Flat	Koh Phai	A-97	10		1	46	8			54	106 203	1 967
0-Studio	Flat	Koh Rang	A-76	08		1	46	8			54	111 000	2 056
0-Studio	Flat	Koh Tao	B-18	01		1	48	10			58	111 700	1 926
0-Studio	Flat	Koh Wai	A-34	03		1	46	8			54	106 000	1 963
0-Studio	Flat	Koh Wai	A-52	05		1	46	8			54	108 000	2 000
1+1	Flat	Bangkok	G-1	0		1	60	11			71	113 025	1 592
1+1	Flat	Bangkok	A-64	07		1	60	11			71	118 041	1 663
1+1	Flat	Bangkok	A-73	08		1	60	11			71	119 295	1 680
1+1	Flat	Bangkok	A-82	09		1	60	11			71	120 549	1 698
1+1	Flat	Koh Lanta	G-1	0		1	60	11			71	113 542	1 599
1+1	Flat	Koh Lanta	A-73	08		1	60	11			71	119 295	1 680
1+1	Flat	Koh Lanta	G-1	0		1	60	11			71	122 152	1 720
1+1	Flat	Koh Lipe	G-1	0		1	60	11			71	113 542	1 599
1+1	Flat	Koh Mak	G-1	0		1	60	11			71	113 542	1 599
1+1	Flat	Koh Mak	A-64	07		1	60	11			71	123 990	1 746
1+1	Flat	Koh Mak	A-73	08		1	60	11			71	119 842	1 688
1+1	Flat	Koh Mak	A-82	09		1	60	11			71	121 102	1 706
1+1	Flat	Koh Phai	A-82	09		1	60	11			71	121 102	1 706
1+1	Flat	Koh Phai	A-91	10		1	60	11			71	122 362	1 723
1+1	Flat	Koh Rang	A-73	08		1	60	11			71	119 295	1 680
1+1	Flat	Koh Rang	A-82	09		1	60	11			71	120 549	1 698

Interior specification



Artificial stone kitchen countertop	Ceramic flooring	Double glazed windows	High quality taps and showers	Toilet integrated in the walls
-------------------------------------	------------------	-----------------------	-------------------------------	--------------------------------

Exterior specification



Glass fence balcony	Heat & sound insulation	Landscape design	Spacious balcony	Terracing with inbuilt lighting & power sockets
---------------------	-------------------------	------------------	------------------	---

Location of complex

