

Alpino Island residential complex

Location **Kyrenia, Lapta**



About the project

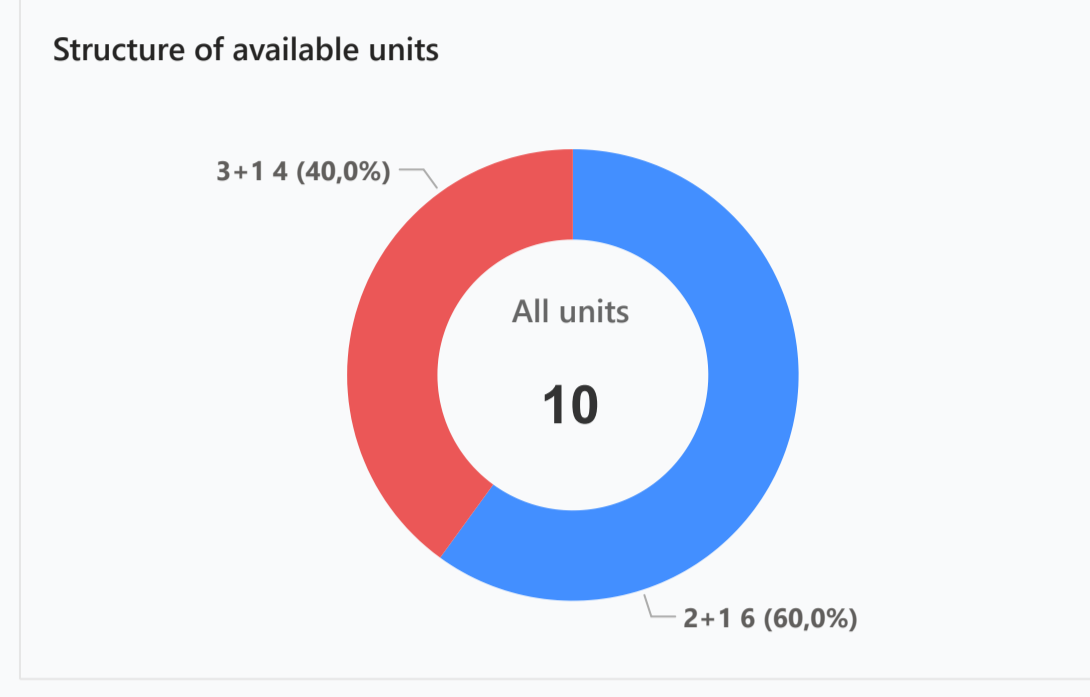
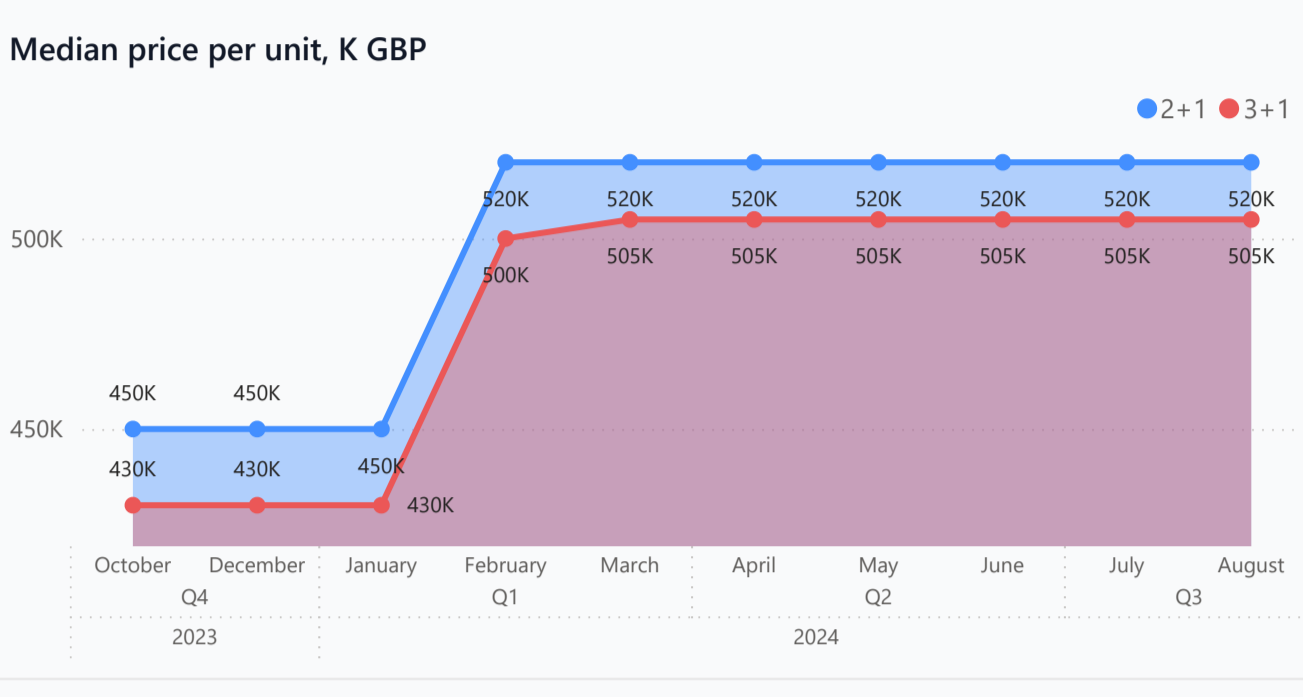


Developer	Atoll
Start of sale	01.01.2023
Key handover	2025
Houses/blocks	14
Building floor	2 Min 2 Max
Units total	4 - semi-detached 2+1 villas, 2 - 3+1, 10 detached 2+1 villas, 1 - 3+1
Distance to the sea	400 m
Distance to key locations:	10 km from Kyrenia, Lapta city, Sardunya Bay - 400 m, Bestmar Supermarket - 1.3 km, Lapta Holiday Club Hotel - 3.1 km, Camelot Beach - 4.6 km, Atakara Supermarket - 5.6 km, Merit Royal Premium Hotel - 6 km, Ambiance - 11.4 km, Girne American Universitesi - 12.4 km, Kamiloglu Hastanesi - 15.4 km.
	The Alpino Island complex is located in the most picturesque part of the island, 10 km from Kyrenia, on the border of the villages of Lapta and Karshiyaki, which have preserved their pristine beauty. In the Alpino Island Complex you will fully experience the true harmony created by man and nature. Just imagine how you watch the sunrise in the morning with a cup of aromatic coffee, and in the evening you spend the day with a glass of fine wine, admiring the incomparable sunset!

Complex infrastructure

- Bar
- Closed territory
- Open pool
- Parking
- Rental office

Available units **10** / 34 total



Plans



Payment plans

Deposit (non-refundable) 5000 GBP for 1 month

Option	Down payment	Installments months	Discount	Offer
Option 1	30%	36	-	-
Option 2	-	-	-	-
Option 3	-	-	-	-
Option 4	-	-	-	-

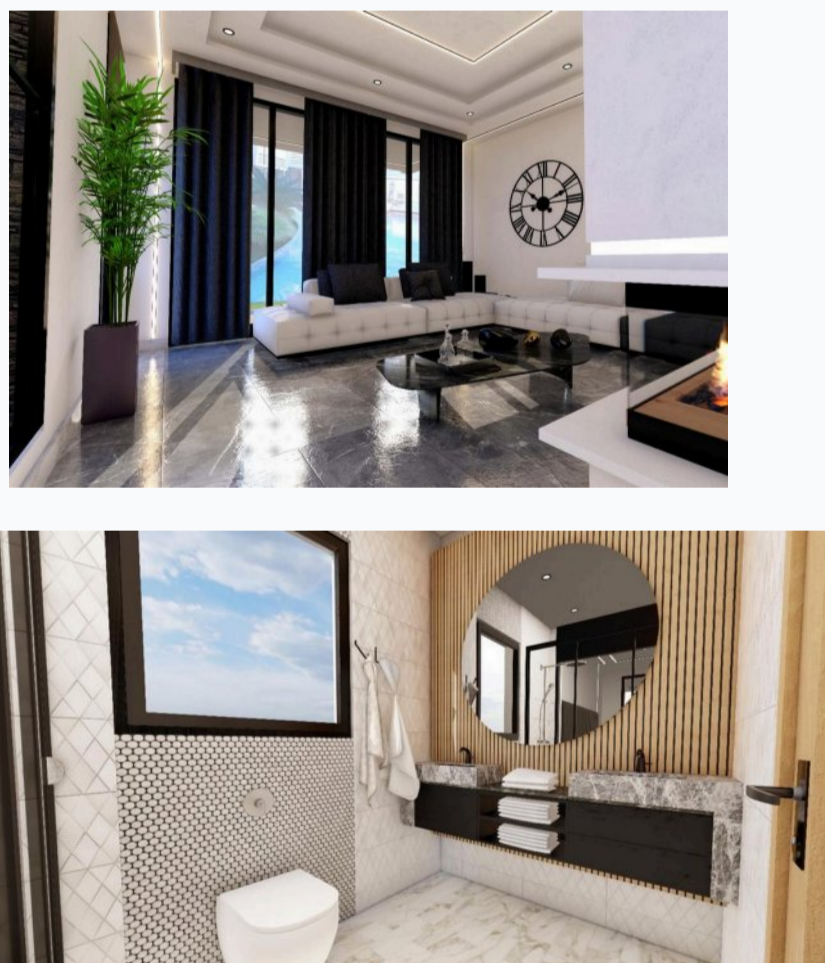
Special offer: Fully furnished design package, Rental guarantee

Trafo (Blank) GBP, Resale -, Maintenance fee -, Rental services -

Details

Bedrooms	Subtype	Block	Unit №	Floor	View	Bathroom	Internal area, sq. m	Balcony/Terrace, sq. m	Rooftop terrace, sq. m	Garden, sq. m	Gross covered area, sq. m	Current price, GBP	Price per sqm, GBP
2+1	Semi-Detached Villa	Alpino Island	9.0	0		128	48			60	176	490 000	2 784
2+1	Semi-Detached Villa	Alpino Island	14.0	0		128	48			76	176	500 000	2 841
2+1	Villa	Alpino Island	1.0	0		128	48			112	176	520 000	2 955
2+1	Villa	Alpino Island	6.0	0		128	48			117	176	520 000	2 955
2+1	Villa	Alpino Island	11.0	0		128	48			75	176	550 000	3 125
2+1	Villa	Alpino Island	12.0	0		128	48			98	176	550 000	3 125
3+1	Semi-Detached Villa	Alpino Island	7.0	0		145	48			44	193	500 000	2 591
3+1	Semi-Detached Villa	Alpino Island	8.0	0		145	48			60	193	500 000	2 591
3+1	Semi-Detached Villa	Alpino Island	13.0	0		145	48			54	193	510 000	2 642
3+1	Villa	Alpino Island	17.0	0		145	48			72	193	550 000	2 850

Interior specification



- Ceramic flooring
- Toilet integrated in the walls

Exterior specification



- Aluminium pergola with wood effect colour
- BBQ place on the roof
- Jacuzzi
- Private Garden
- Terracing with inbuilt lighting & power sockets

Location of complex

