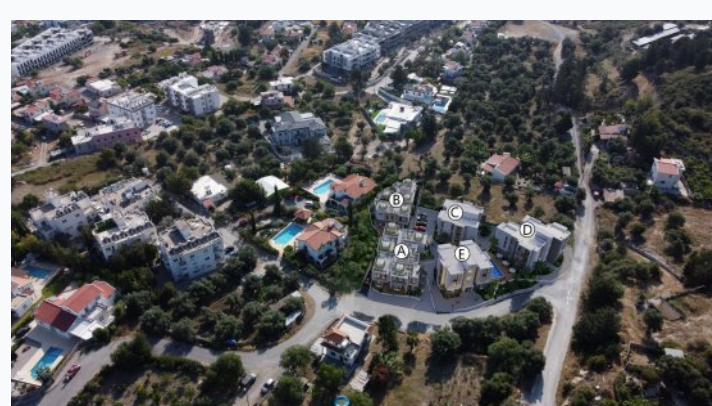


Mountain Hill 2 residential complex

Location **Kyrenia, Alsancak**



About the project



Developer	Atoll
Start of sale	01.03.2023
Key handover	2025
Houses/blocks	5
Building floor	2 3 Min Max
Units total	29 - 1+1, 12 - 2+1

Distance to the sea - 2300 m

Distance to key locations:

10 km from Kyrenia, Atakara Supermarket - 1 km, Merit Royal Premium Hotel - 2.2 km, Merit Royal Hotel - 2.2 km, Starling Supermarket - 2.3 km, Mare Monte Beach - 2.3 km, Camelot Beach - 2.3 km, Ambiance - 6.1 km, Girne American Universitesi - 6.7 km, Eziç Premier - 9.8 km, Kamiloğlu Hastanesi - 9.9 km

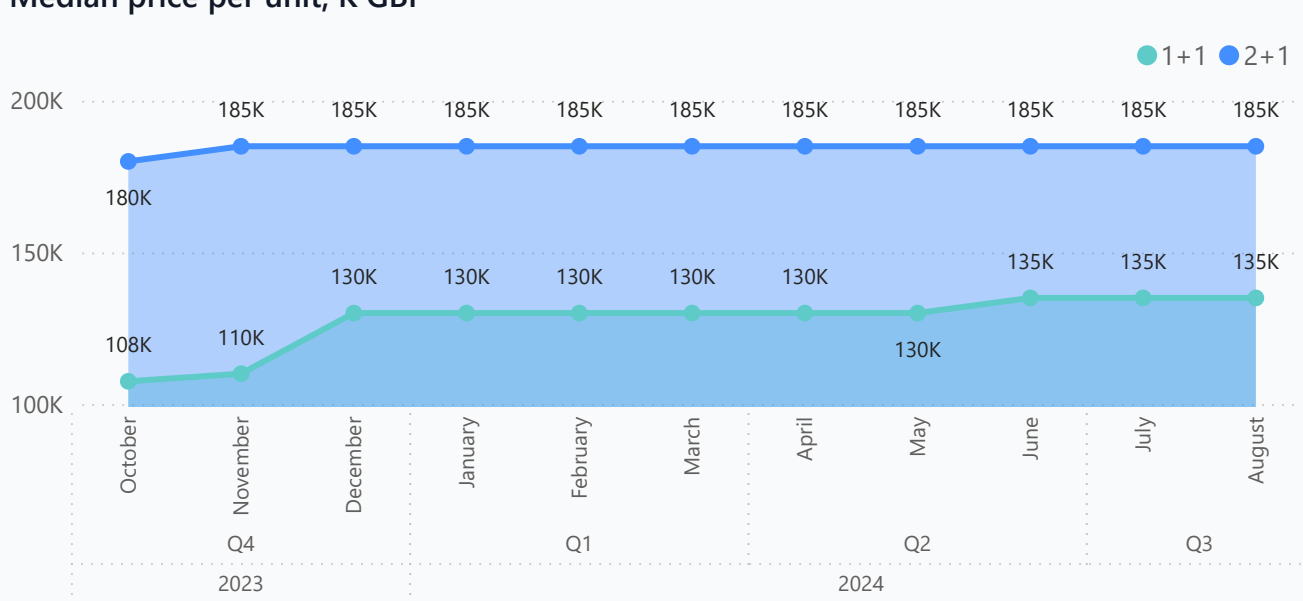
The new complex under construction "Mountain Hill-2" will be located 10 km from Kyrenia in the cozy village of Alsancak, in the mountains. Alsancak is known for its traditional Cypriot atmosphere, stunning views of the mountains and sea. Beautiful rocky shores and magnificent sandy beaches make Alsancak attractive both for holidays and for permanent residence. The complex consists of 2 parts: 2 two-story blocks with a swimming pool and underground parking and 3 three-story blocks with a swimming pool and open parking spaces.

Complex infrastructure

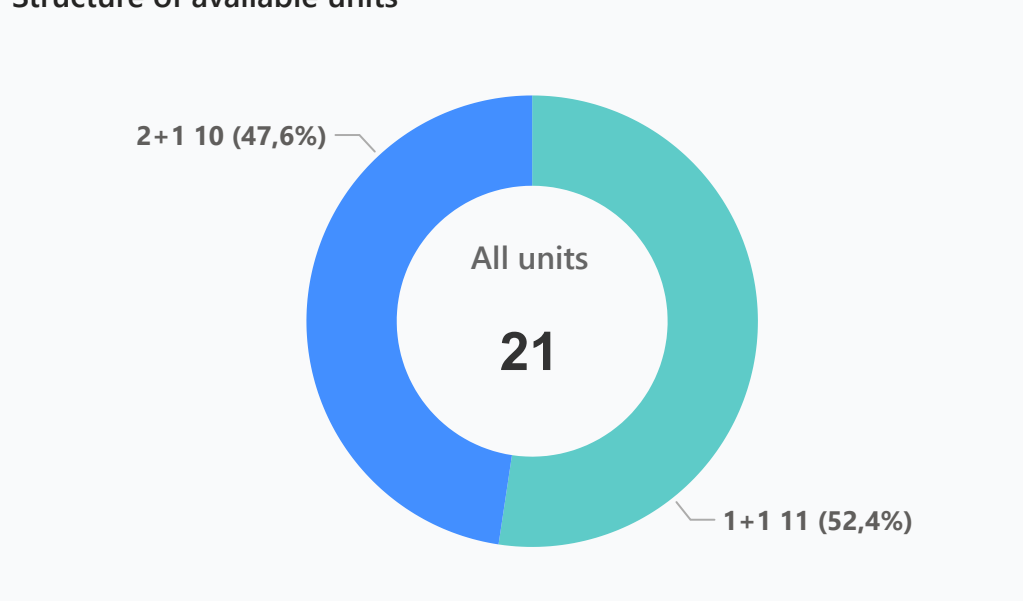
- Automatic Entrance Gate
- Central generator
- Closed territory
- Open pool
- Parking
- Rooftop pool

Available units **21** / 41 total

Median price per unit, K GBP



Structure of available units



Plans



2+1



1+1

Payment plans **Deposit (non-refundable) 2000 GBP for 1 month**

Option	Down payment	Installments months	Discount	Offer
Option 1	30 %	24	-	-
Option 2	-	-	-	-
Option 3	-	-	-	-
Option 4	-	-	-	-

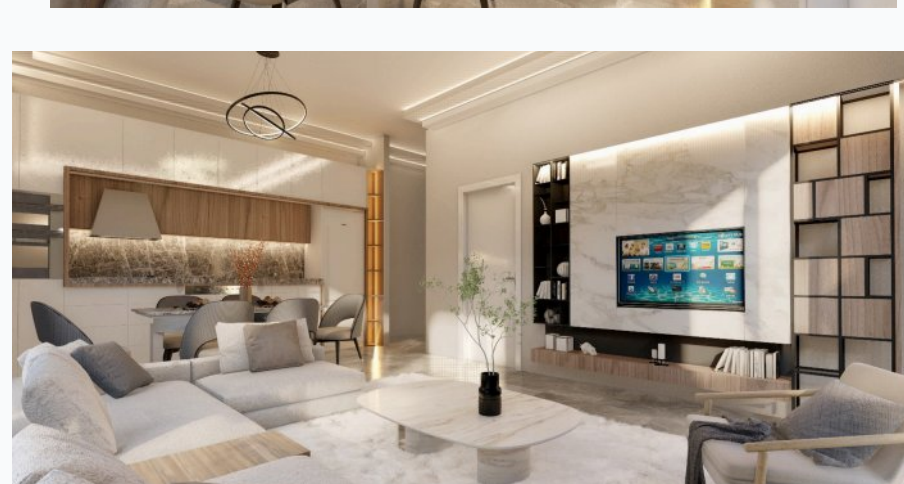
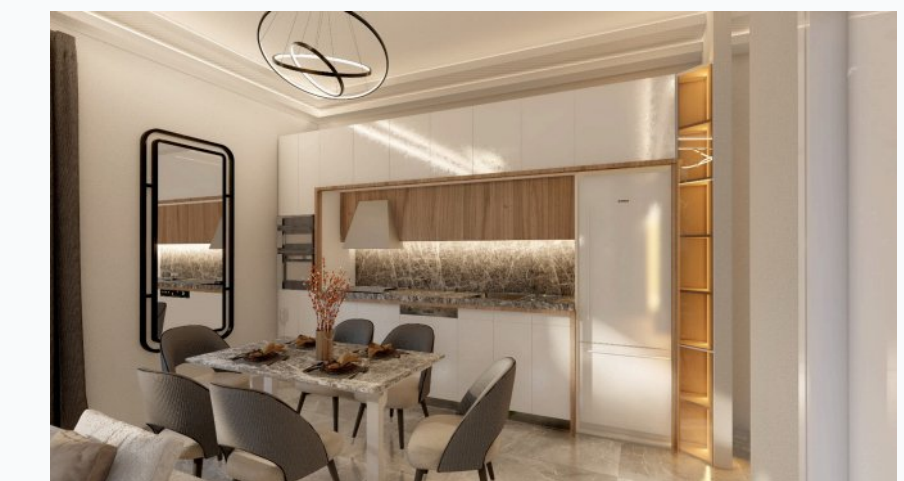
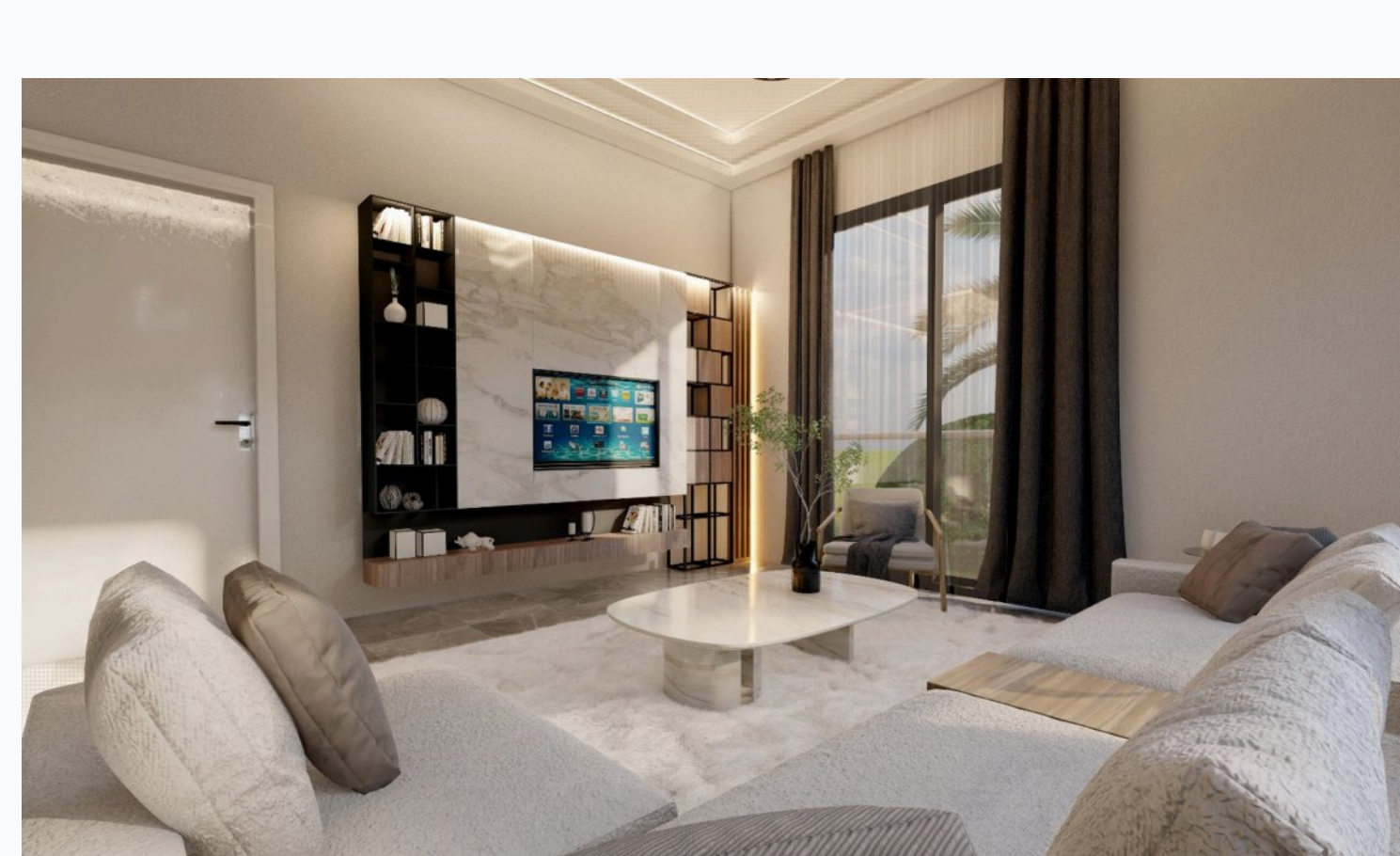
Special offer	Fully furnished design package	Rental guarantee
---------------	---------------------------------------	------------------

Trafo (Blank) GBP	Resale -	Maintenance fee -	Rental services -
-------------------	----------	-------------------	-------------------

Details

Bedrooms	Subtype	Block	Unit №	Floor	View	Bathroom	Internal area, sq. m	Balcony/ Terrace, sq. m	Rooftop terrace, sq. m	Garden, sq. m	Gross covered area, sq. m	Current price, GBP	Price per sqm, GBP
1+1	Flat	A	5	0			50	9		17	59	120 000	2 034
1+1	Flat	B	1	0			50	7		15	57	110 000	1 930
1+1	Flat	D	1	0			50	7			57	125 000	2 193
1+1	Flat	D	2	0			50	7			57	125 000	2 193
1+1	Flat	D	3	0			50	7			57	125 000	2 193
1+1	Flat	D	4	01			50	7			57	135 000	2 368
1+1	Flat	D	5	01			50	7			57	135 000	2 368
1+1	Flat	D	6	01			50	7			57	135 000	2 368
1+1	Flat	D	7	02			50	7			57	145 000	2 544
1+1	Flat	D	8	02			50	7			57	145 000	2 544
1+1	Flat	D	9	02			50	7			57	145 000	2 544
2+1	Duplex	A	3	0			70	8	50	21	128	210 000	1 641
2+1	Flat	A	4	0			70	9		16	79	150 000	1 899
2+1	Duplex	A	6	0			70	9	52		131	200 000	1 527
2+1	Flat	A	9	01			70		50		120	160 000	1 333
2+1	Flat	C	1	0			60	7			67	175 000	2 612
2+1	Flat	C	2	0			60	7			67	175 000	2 612
2+1	Flat	C	3	01			60	7			67	185 000	2 761
2+1	Flat	C	4	01			60	7			67	185 000	2 761
2+1	Flat	C	5	02			60	7			67	210 000	3 134
2+1	Flat	C	6	02			60	7			67	220 000	3 284

Interior specification



Interior specification

- Ceramic flooring

Exterior specification



Exterior specification

- Glass fence balcony
- Terracing with inbuilt lighting & power sockets

Location of complex

