

Bahamas Homes 2 residential complex

Location **Kyrenia, Esentepe**



About the project



Developer	Cyprus Constructions	
Start of sale	2021	
Key handover	2025	
Houses/blocks	11	
Building floor	2 Min	2 Max
Units total	224 - Studio, 32 - 1+1, 32 - 2+1	

Distance to the sea - 500 m

Distance to key locations:

University - 27 km, Airport - 35 km, Shops and markets - 4 km, Primary schools - 9 km, Hospital - 8 km

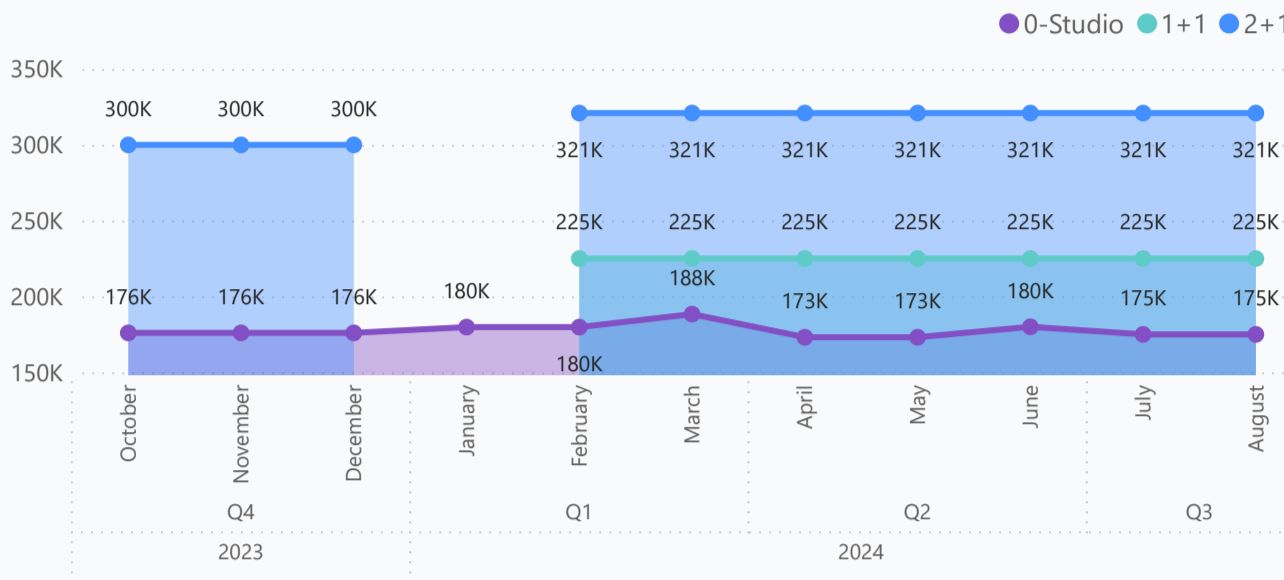
Situated on the east of Kyrenia, this concept project brings the Bahamas to you. With its modern and unique design, variety of types and all the amenities it has to offer Bahamas Homes is surely an eye-catcher. Located in the greenest and most beautiful part of Cyprus, the Bahamas Homes project offers a private beachfront lifestyle.

Complex infrastructure

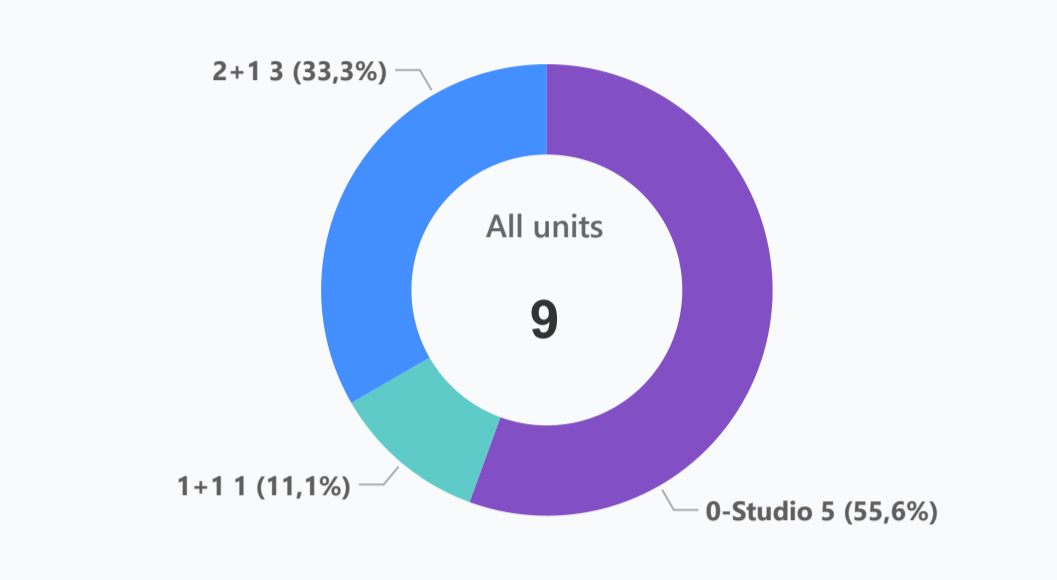
- Central generator
- Kid's pool
- Maintenance office
- Open pool
- Parking
- Rental office
- Security Camera System
- Shuttle service

Available units **9** / 288 total

Median price per unit, K GBP



Structure of available units



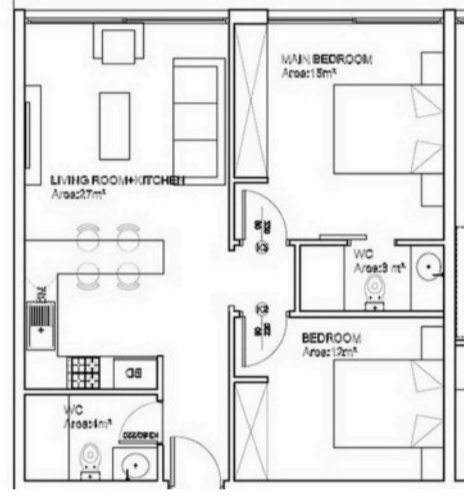
Plans



0-Studio



1+1



2+1

Payment plans **Deposit (non-refundable) 2000 GBP for 2 weeks**

Option	Down payment	Installments months	Discount	Offer
Option 1	35%	65% till key	-	-
Option 2	-	-	-	-
Option 3	-	-	-	-
Option 4	-	-	-	-

Special offer

Fully furnished design package

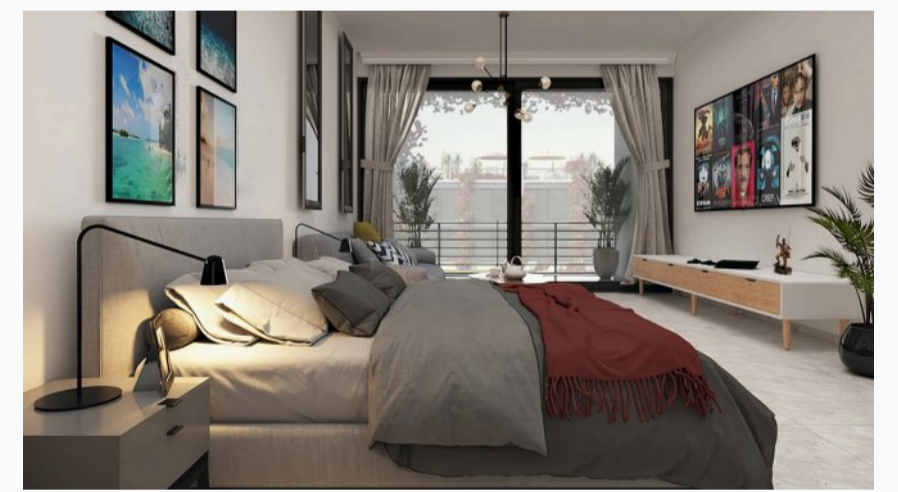
Rental guarantee

- Trafo 3000 GBP
- Resale after 50%
- Maintenance fee 60 GBP
- Rental services 40%

Details

Bedrooms	Subtype	Block	Unit №	Floor	View	Bathroom	Internal area, sq. m	Balcony/ Terrace, sq. m	Rooftop terrace, sq. m	Garden, sq. m	Gross covered area, sq. m	Current price, GBP	Price per sqm, GBP
0-Studio	Flat	B3	29	01	1	35	8	35	78	185 000	2 372		
0-Studio	Flat	B3	30	01	1	35	8	35	78	185 000	2 372		
0-Studio	Flat	B4	12	0	1	35	8	43	171 250	3 983			
0-Studio	Flat	B6	32	01	1	35	8	35	78	175 000	2 244		
0-Studio	Flat	B7	15	0	1	35	8	43	171 250	3 983			
1+1	Flat	A2	6	0	1	50	10	60	225 000	3 750			
2+1	Loft	A3	13	01	1	75	10	50	320 950	2 377			
2+1	Loft	A3	9	01	1	75	10	50	320 950	2 377			
2+1	Loft	A4	10	01	1	75	10	50	320 950	2 377			

Interior specification



Interior specification

- Artificial stone kitchen countertop
- Double glazed windows
- High level kitchen cabinets
- High quality furniture in bathrooms
- High quality internal doors
- High quality taps and showers
- Toilet integrated in the walls

Exterior specification



Exterior specification

- Glass fence balcony
- Heat & sound insulation
- Landscape design
- Terracing with inbuilt lighting & power sockets

Location of complex

