

Pearl Island residential complex

Location **Kyrenia, Esetepe**



About the project

Developer **Cyprus Constructions**

Start of sale **01.01.2020**

Key handover **2023**

Houses/blocks **10**

Building floor **2** **2**
Min Max

Units total **156 - Studio**

Distance to the sea - 600 m

Distance to key locations:
 Airport 45 min. Supermarket 10 min. School 12 min.
 Kindergarten 15 min. Hospital 11 min. Shopping center 15 min.

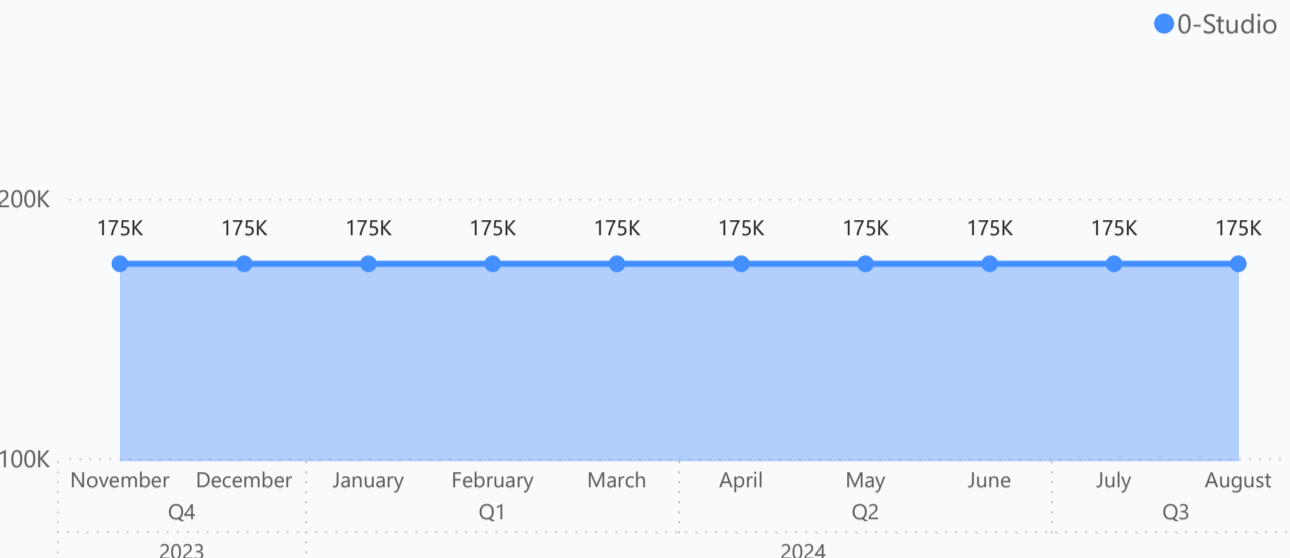
Located in a secluded location by the sea, Pearl Island offers excellent rental opportunities both during the tourist season and during the off-season. Each apartment in Pearl Island has an area of 35 square meters and 8 square meters of terrace, providing its residents with a comfortable space and stunning views of the surrounding landscape. The apartments are delivered fully finished and finished.

Complex infrastructure

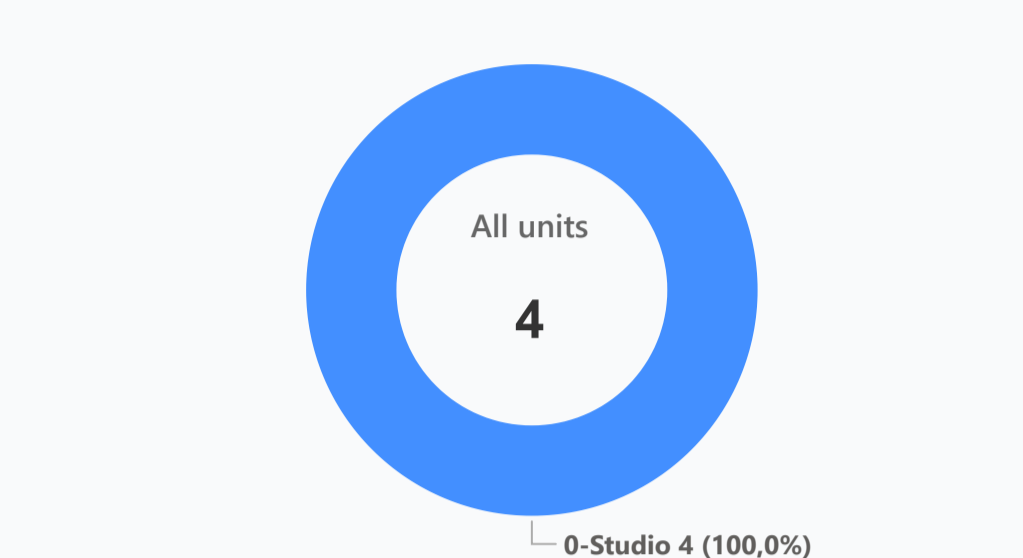
- Bar ✓
- BBQ area ✓
- Café ✓
- Central generator ✓
- Fitness centre ✓
- Hamam ✓
- Health centre ✓
- Kid's play room ✓
- Kid's playground ✓
- Kid's pool ✓
- Lounge ✓
- Maintenance office ✓
- Massage rooms ✓
- Open pool ✓
- Parking ✓
- Rental office ✓
- Restaurant ✓
- Sauna ✓
- Security Camera System ✓
- Shuttle service ✓
- Yoga and meditation rooms ✓

Available units **4** / 156 total

Median price per unit, K GBP



Structure of available units



Plans



0-Studio

Payment plans

Deposit (non-refundable) 2000 GBP for 2 weeks

Option	Down payment	Installments months	Discount	Offer
Option 1	100 %	-	-	-
Option 2	-	-	-	-
Option 3	-	-	-	-
Option 4	-	-	-	-

Special offer

9000-12000 GBP for studio, 15000 - 20000 GBP for 1+1

Fully furnished design package

Rental guarantee
no

Trafo 3000 GBP **Resale after 100%** **Maintenance fee 60 GBP** **Rental services 40 %**

Details

Bedrooms	Subtype	Block	Unit №	Floor	View	Bathroom	Internal area, sq. m	Balcony/ Terrace, sq. m	Rooftop terrace, sq. m	Garden, sq. m	Gross covered area, sq. m	Current price, GBP	Price per sqm, GBP
0-Studio	Flat	B1	5	0		1	35	8			43	174 950	4 069
0-Studio	Flat	B1	6	0		1	35	8			43	174 950	4 069
0-Studio	Flat	C5	5	0		1	35	8			43	174 950	4 069
0-Studio	Flat	C6	3	0		1	35	8			43	174 950	4 069

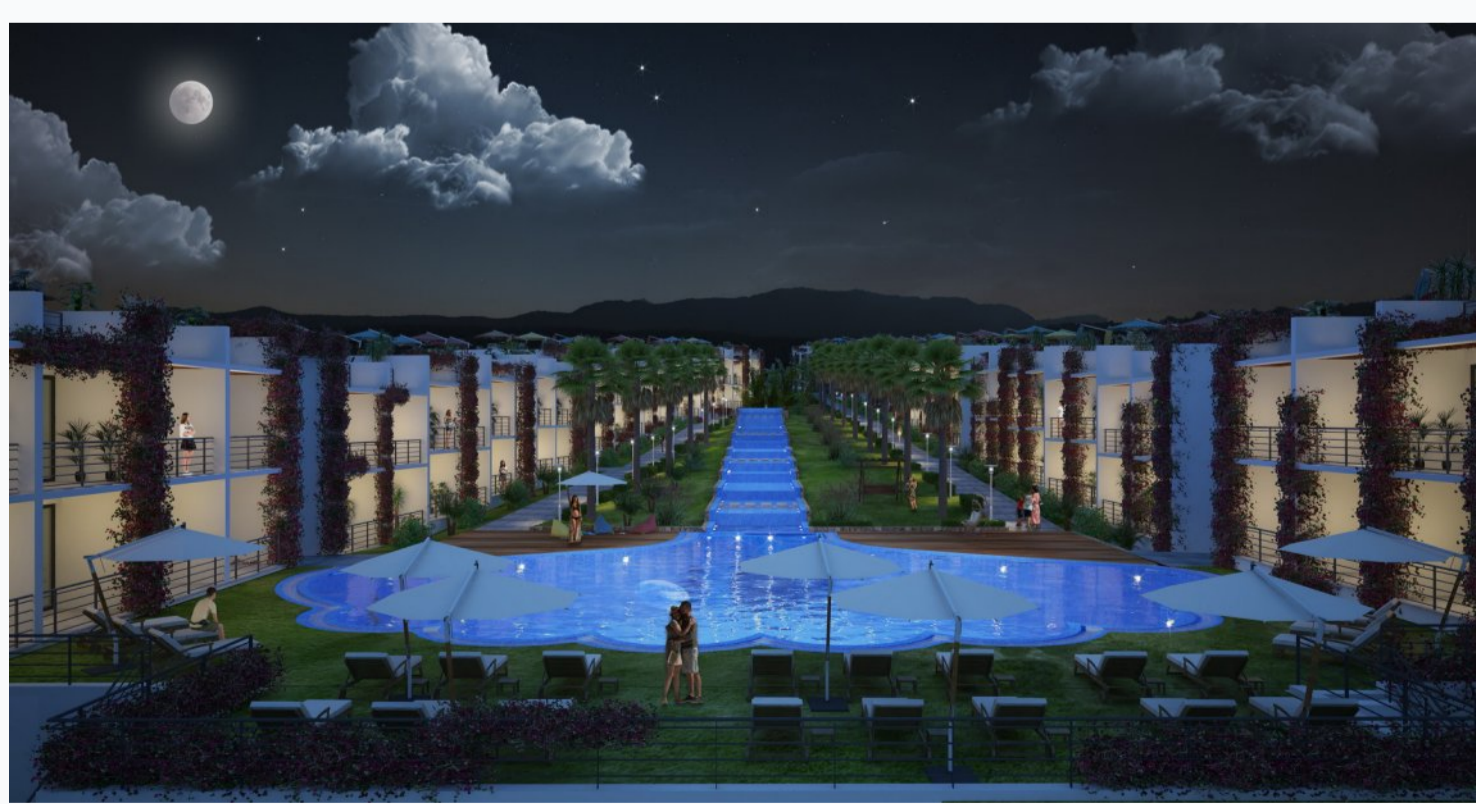
Interior specification



Interior specification

- Artificial stone kitchen countertop ✓
- Double glazed windows ✓
- High level kitchen cabinets ✓
- High quality furniture in bathrooms ✓
- High quality internal doors ✓
- High quality taps and showers ✓
- Toilet integrated in the walls ✓

Exterior specification



Exterior specification

- BBQ place on the roof ✓
- Beach and beach facilities ✓
- Glass fence balcony ✓
- Heat & sound insulation ✓
- Landscape design ✓
- Private Garden ✓
- Shower on the roof terrace ✓
- Terracing with inbuilt lighting & power sockets ✓

Location of complex

