

Phuket Health and Wellness - Phase 1 residential complex

Location **Famagusta, Küçük Erenköy**



About the project

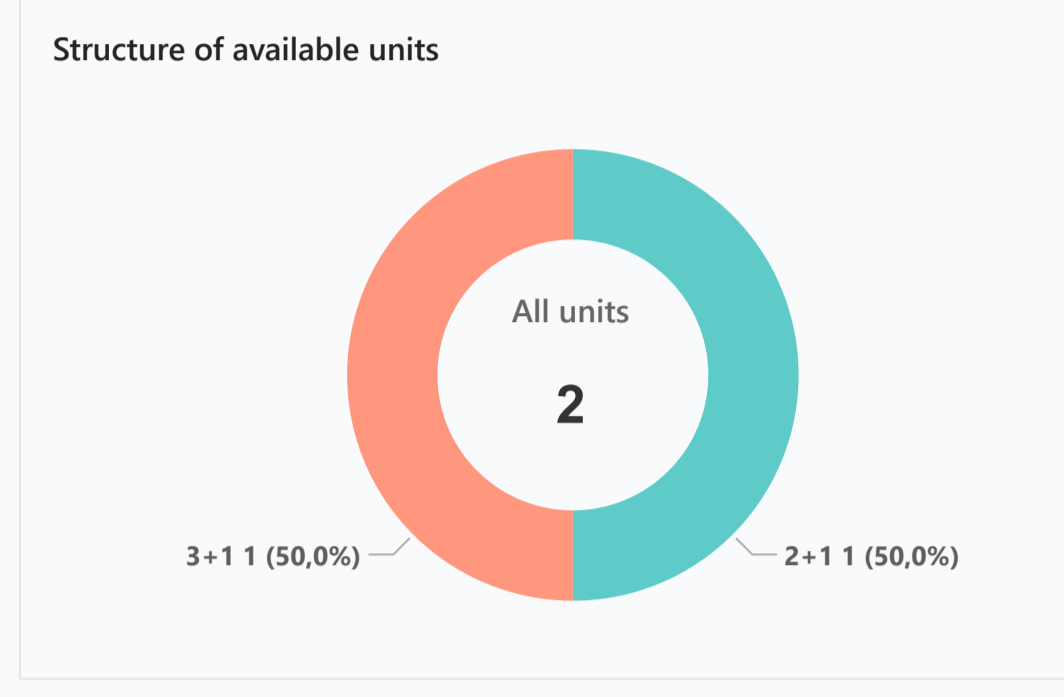
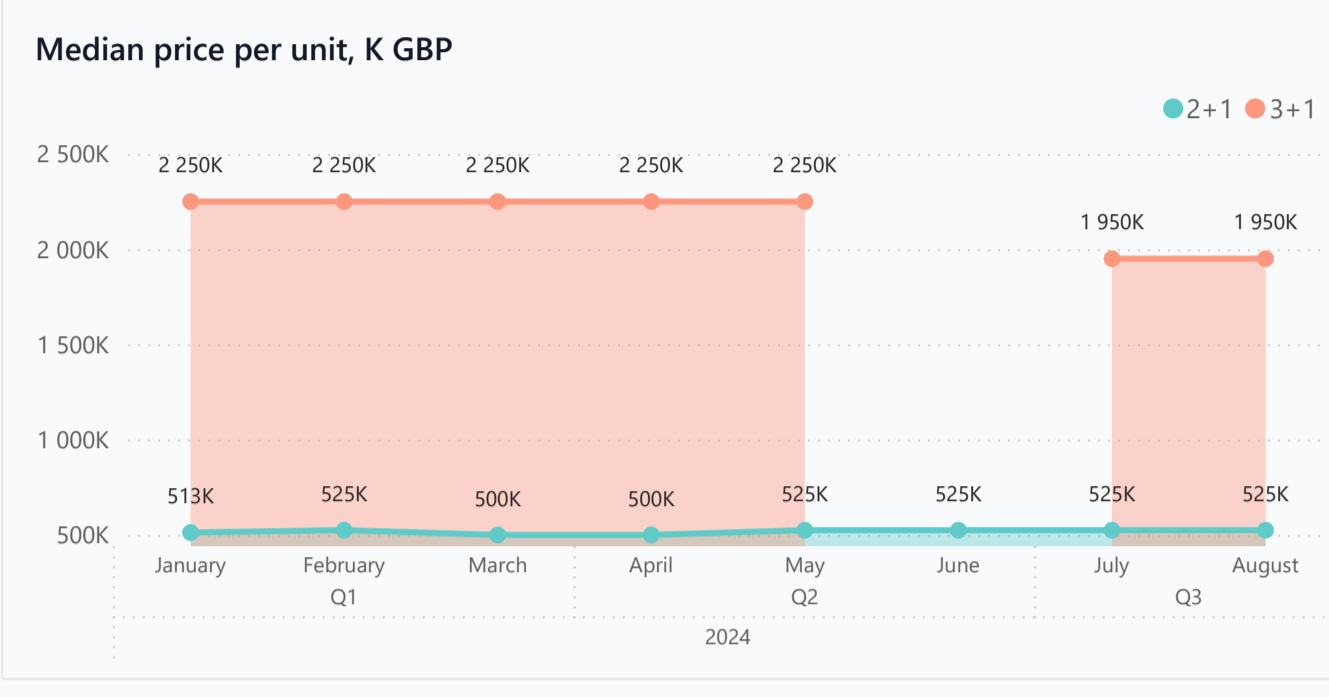
Developer	Cyprus Constructions
Start of sale	01.06.2023
Key handover	2027
Houses/blocks	9
Building floor	1 Min 2 Max
Units total	40 - 2+1 Apts, 10 - 2+1 Townhouses, 5 - 3+1 Bungalows
Distance to the sea -	300 m
Distance to key locations:	37 km to the university. Airport 45 min. Supermarket 7 min. Pharmacy 10 min. School 13 min. Kindergarten 12 min. Hospital 11 min.

This new concept project from Cyprus Constructions will allow you to experience diversity of relaxation from the thriving Five Finger Mountains and the magnificent scenery of the Mediterranean Sea right in front of you. Luxury, privacy, tranquility, relaxation, comfort and modernity are what you will find here. The quiet atmosphere amidst verdant nature and fresh air reinforces the concept of health and well-being on which the project is built on.

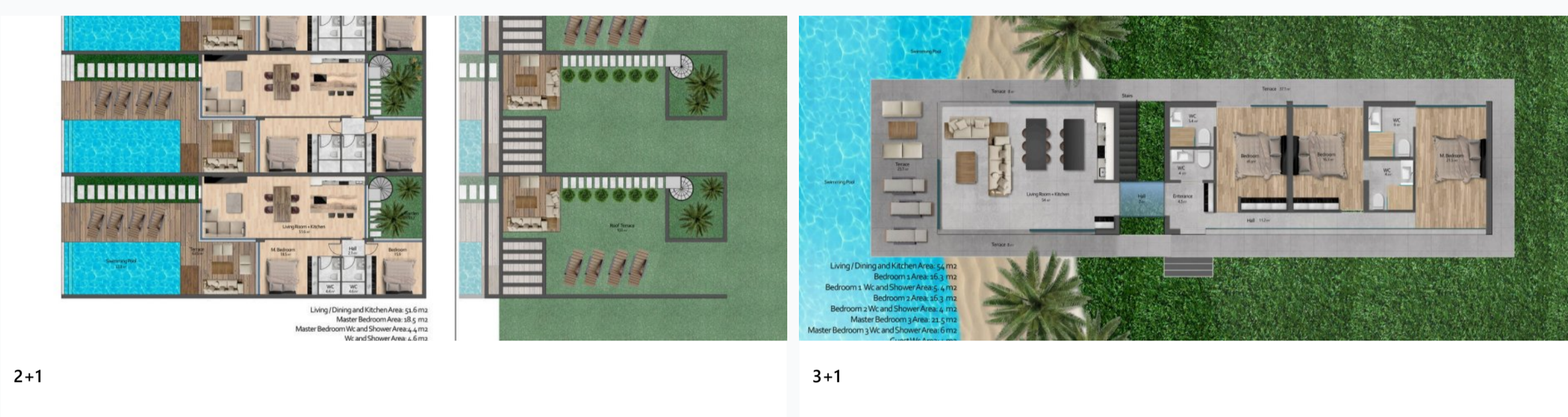
Complex infrastructure

- Central generator
- Kid's pool
- Maintenance office
- Open pool
- Parking
- Rental office
- Security Camera System
- Shuttle service

Available units **2** / 55 total



Plans



Payment plans

Deposit (non-refundable) 2000 GBP for 2 weeks, 5000 GBP for a mon...

Option	Down payment	Installments months	Discount	Offer
Option 1	35%	65% till key	-	-
Option 2	-	-	-	-
Option 3	-	-	-	-
Option 4	-	-	-	-

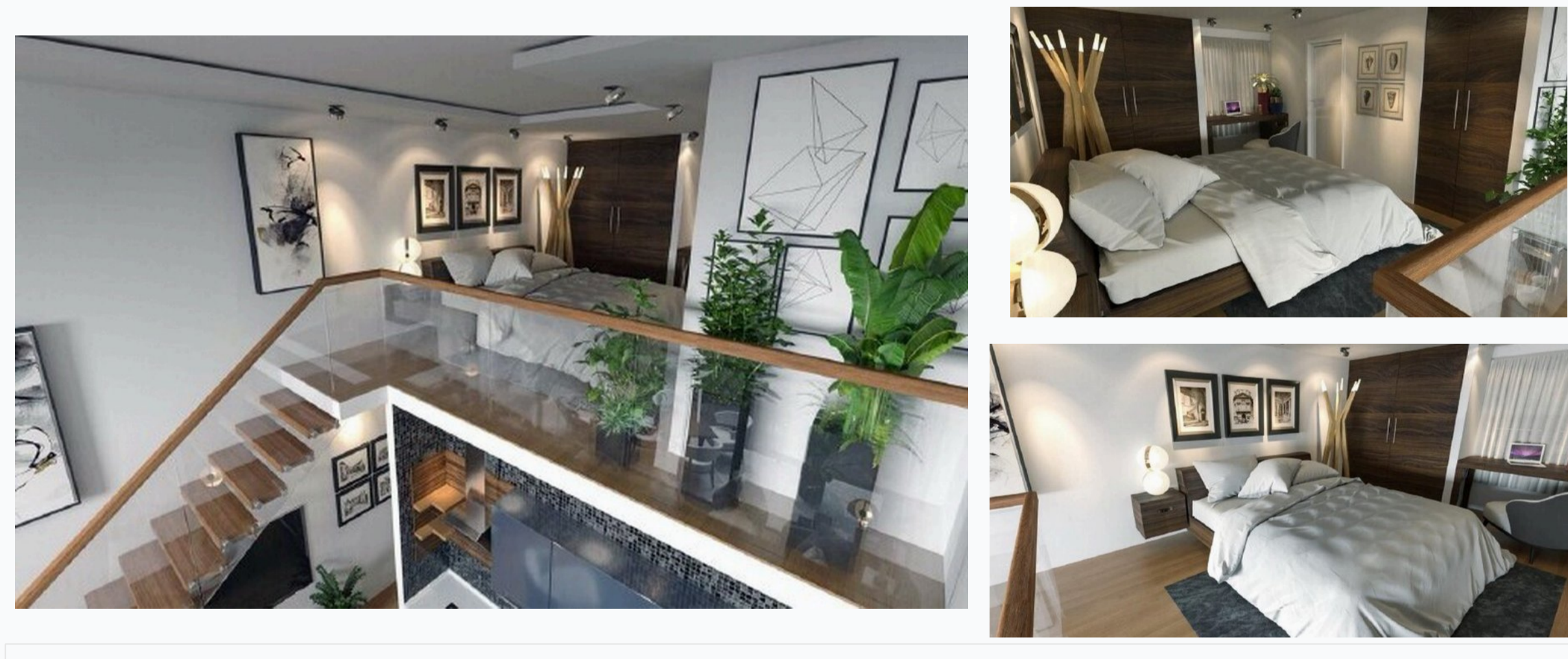
Special offer: Fully furnished design package, Rental guarantee: no

Trafo 3000 GBP, Resale after 50%, Maintenance fee 100 GBP apartments, 200 GBP villas, Rental services 40%

Details

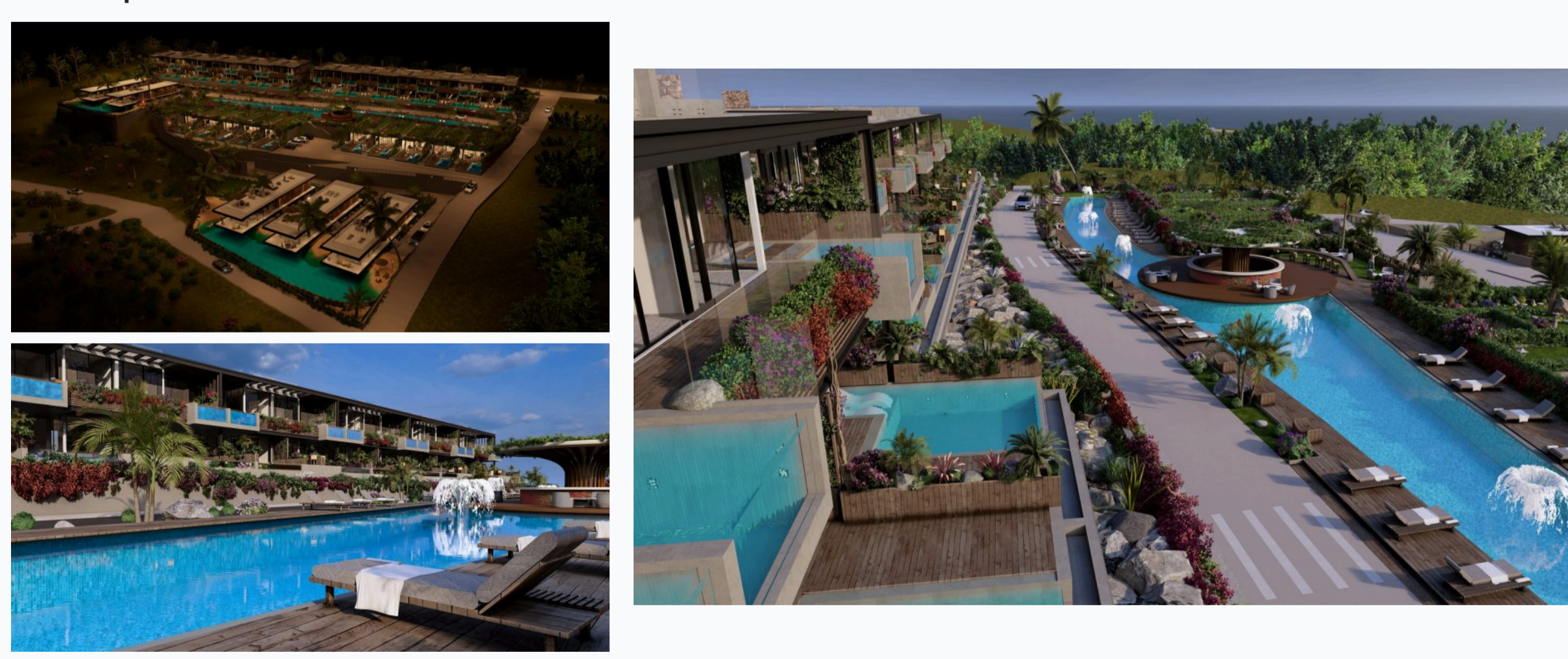
Bedrooms	Subtype	Block	Unit №	Floor	View	Bathroom	Internal area, sq. m	Balcony/Terrace, sq. m	Rooftop terrace, sq. m	Garden, sq. m	Gross covered area, sq. m	Current price, GBP	Price per sqm, GBP
2+1	Flat	A2	9	0			70	30		12	100	525 000	5 250
3+1	Villa	C	4	0			145	75	145		365	1 950 000	5 342

Interior specification



- Artificial stone kitchen countertop
- Double glazed windows
- High level kitchen cabinets
- High quality furniture in bathrooms
- High quality internal doors
- High quality taps and showers
- Toilet integrated in the walls

Exterior specification



- Energy saving bricks
- Glass fence balcony
- Heat & sound insulation
- Landscape design
- Terracing with inbuilt lighting & power sockets

Location of complex

