

Delonix residential complex

Location **Kyrenia, Karşıyaka**



About the project



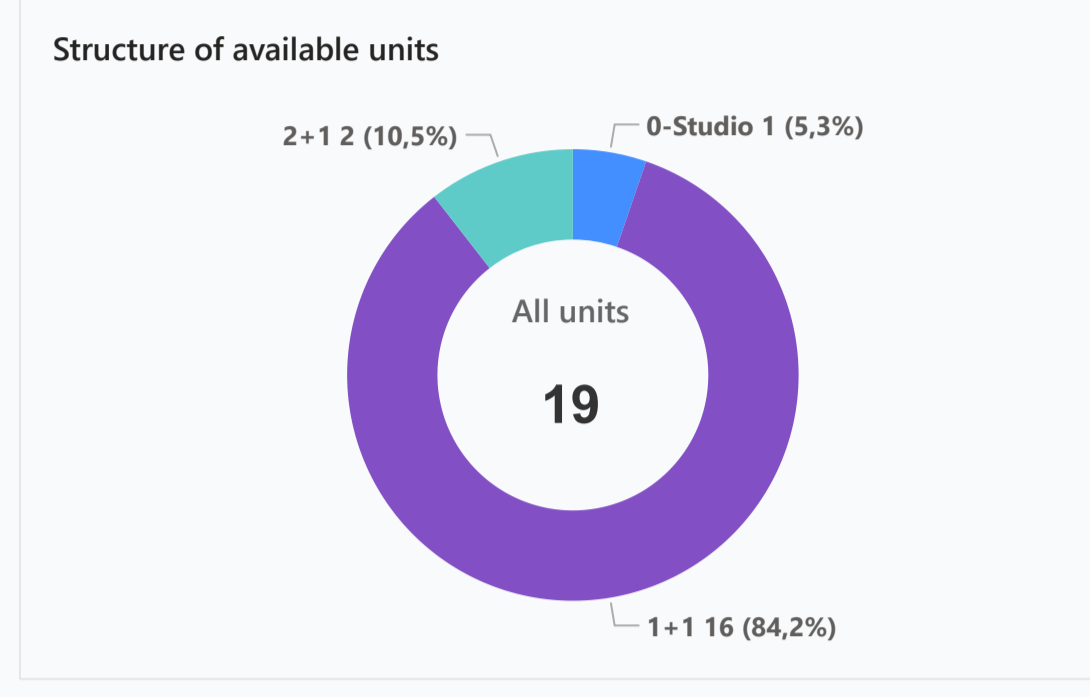
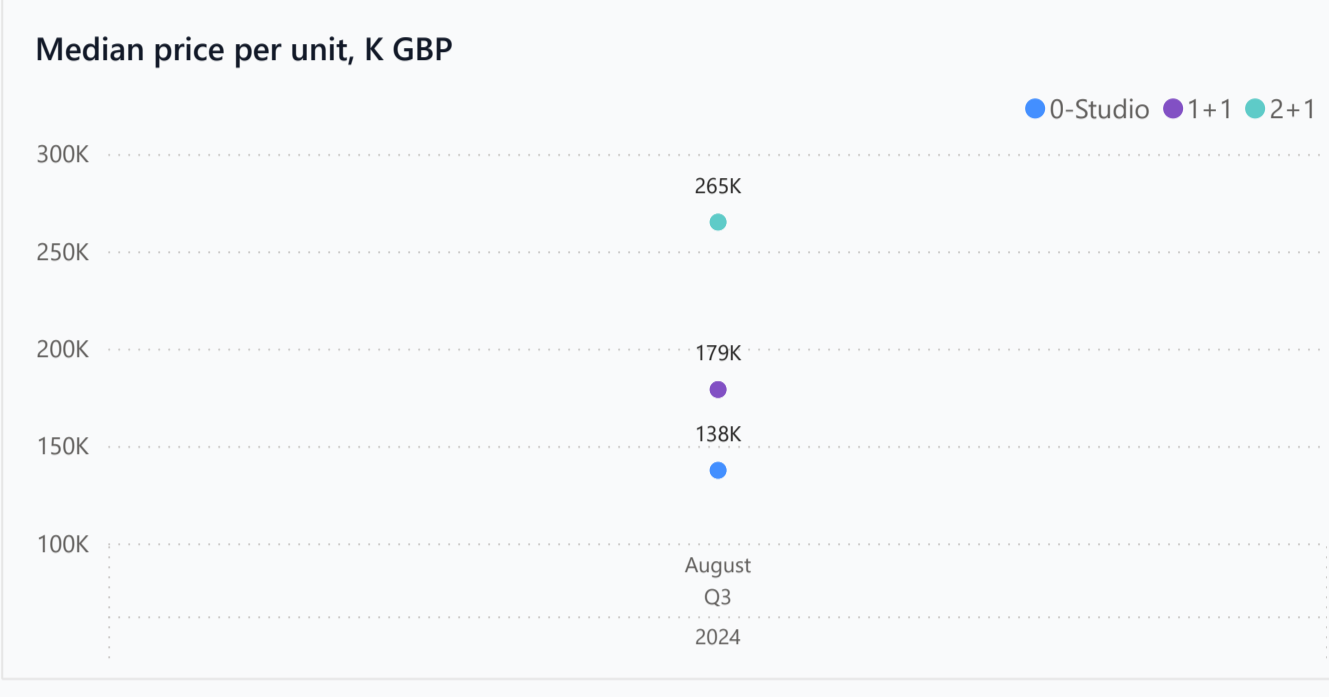
Developer	Kofali Construction
Start of sale	01.03.2024
Key handover	2026
Houses/blocks	5
Building floor	2 Min 2 Max
Units total	12- Studio, 20 - 1+1 , 4-2+1
Distance to the sea - 400 m	
Distance to key locations: Airport - 60 min. Supermarket - 2 min. Pharmacy - 6 min. School - 4 min. Kindergarten - 8 min. Hospital - 4 min.	

Delonix is a beautiful residential complex located just 400 meters from the sea coast with breathtaking mountain views. He represents the third phase project The Garden of Eden and offers a total of 36 apartments of various layouts, including studios, penthouses, lofts and penthouses.

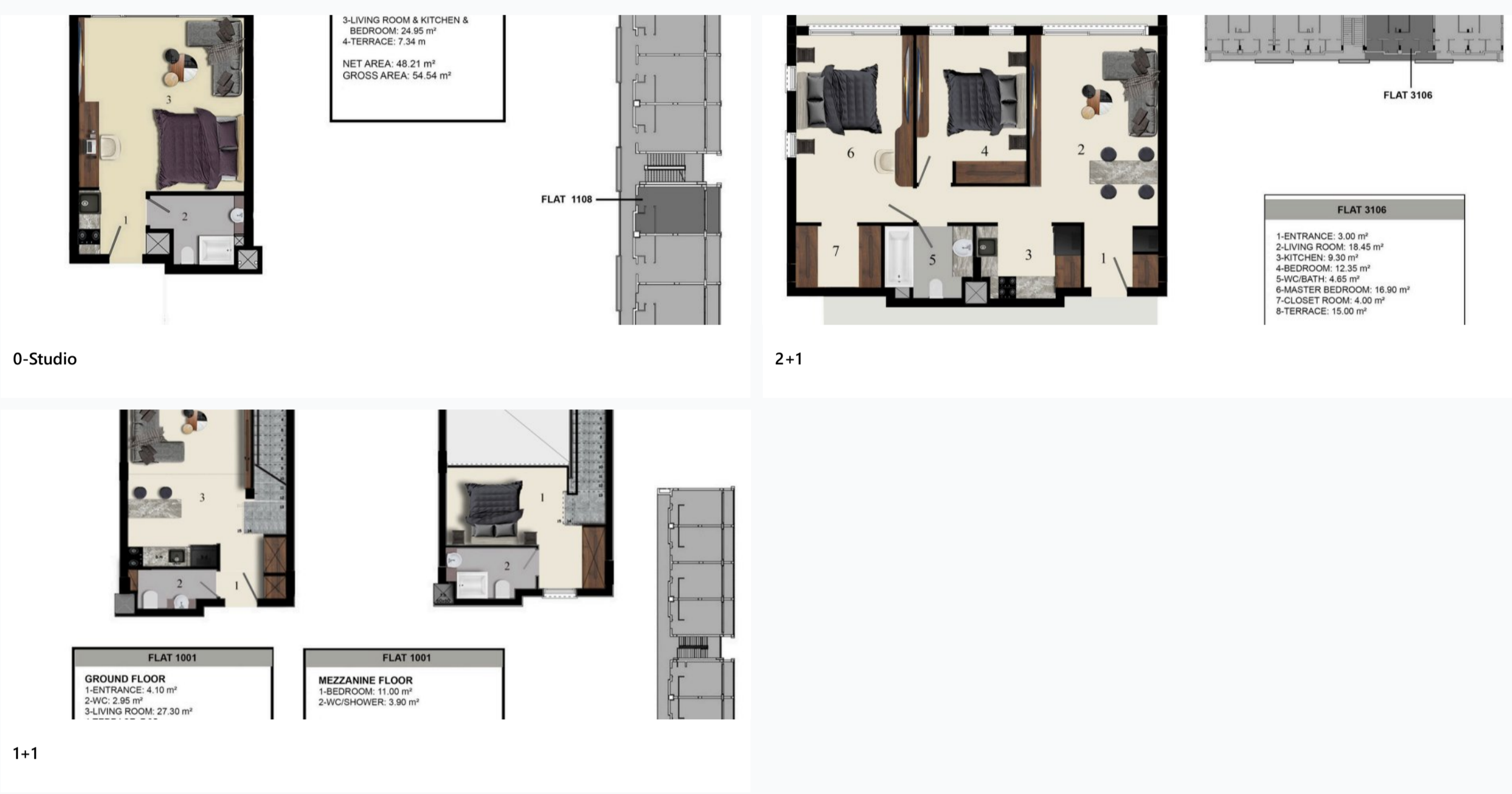
Complex infrastructure

- Aqua park
- Bar
- Café
- Central generator
- Fitness centre
- Hamam
- Indoor pool
- Kid's playground
- Massage rooms
- Open pool
- Parking
- Restaurant

Available units 19 / 36 total



Plans



Payment plans

Deposit (non-refundable) 2000 GBP – two week reservation fee 500...

Option	Down payment	Installments months	Discount	Offer
Option 1	40%	60% till key	-	-
Option 2	-	-	-	-
Option 3	-	-	-	-
Option 4	-	-	-	-

- Special offer
- Fully furnished design package
- Rental guarantee

- Trafo 3000 GBP
- Resale -
- Maintenance fee -
- Rental services -

Details

Bedrooms	Subtype	Block	Unit №	Floor	View	Bathroom	Internal area, sq. m	Balcony/ Terrace, sq. m	Rooftop terrace, sq. m	Garden, sq. m	Gross covered area, sq. m	Current price, GBP	Price per sqm, GBP
0-Studio	Flat	2	6	01		1	54		33		87	137 500	1 580
1+1	Loft	1	4	0		2					79	190 000	2 405
1+1	Loft	1	1	0		2					80	190 000	2 375
1+1	Loft	2	2	0		2					78	179 000	2 295
1+1	Loft	2	3	0		2					78	179 000	2 295
1+1	Loft	2	4	0		2					79	179 000	2 266
1+1	Loft	2	1	0		2					80	190 000	2 375
1+1	Loft	3	2	0		2					78	179 000	2 295
1+1	Loft	3	3	0		2					78	179 000	2 295
1+1	Loft	3	1	0		2					79	179 000	2 266
1+1	Loft	3	4	0		2					80	190 000	2 375
1+1	Loft	4	2	0		2					78	179 000	2 295
1+1	Loft	4	3	0		2					78	179 000	2 295
1+1	Loft	4	4	0		2					79	179 000	2 266
1+1	Loft	4	1	0		2					80	190 000	2 375
1+1	Loft	5	2	0		2					78	179 000	2 295
1+1	Loft	5	4	0		2					80	190 000	2 375
2+1	Flat	4	6	01		1	93		63		156	265 000	1 699
2+1	Flat	5	6	01		1	92		71		163	265 000	1 626

Interior specification



- Ceramic flooring
- High quality internal doors
- Laminate flooring in the bedrooms

Exterior specification



- Beach and beach facilities
- Landscape design
- Terracing with inbuilt lighting & power sockets

Location of complex

