

Palmera residential complex

Location **Kyrenia, Karsiyaka**



About the project



Developer	Kofali Construction
Start of sale	01.01.2023
Key handover	2024
Houses/blocks	15
Building floor	2 Min 2 Max
Units total	26 - Studio, 70 - 1+1, 19-2+1, 2-3+1

Distance to the sea - 600 m
 Distance to the key locations:
 Airport - 60 min. Supermarket - 2 min. - Pharmacy - 6 min.
 School - 4 min. Kindergarten - 8 min. Hospital - 4 min.

Palmera Residential Complex is a new development under construction, ideally located in the picturesque Karsiyaka area of Northern Cyprus. This project, consisting of 21 two-story buildings, offers a variety of housing options, including studios, apartments and penthouses. Commissioning of the complex is scheduled for the end of 2024. One of the key advantages of Palmera is its convenient location. The complex is located just a 5-minute walk from the Mediterranean coast and a 10-minute drive from the city center, providing easy access to both beach holidays and city infrastructure.

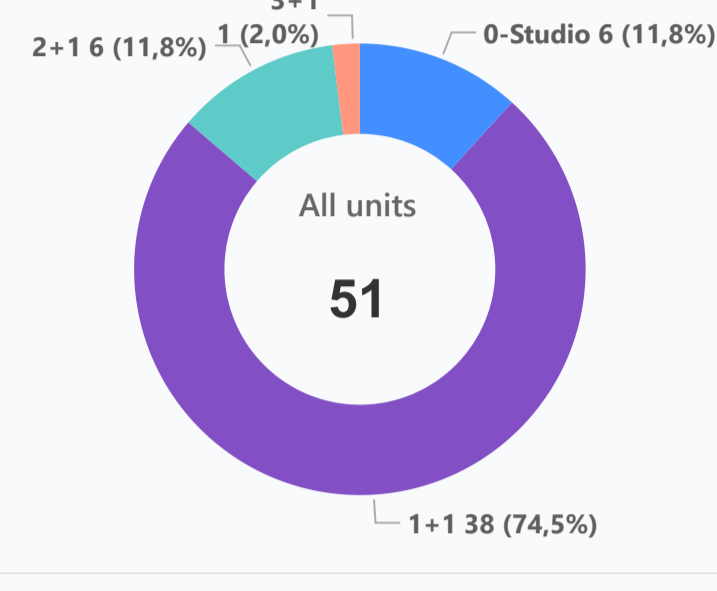
Complex infrastructure

- Bar
- Central generator
- Fitness centre
- Hamam
- Indoor pool
- Massage rooms
- Open pool
- Parking
- Restaurant

Available units 51 / 94 total

Median price per unit, K GBP

Structure of available units



Plans



Payment plans

Deposit (non-refundable) 2000 GBP – two week reservation fee 500...

<p>Option 1</p> <p><input checked="" type="radio"/> Down payment 40 %</p> <p>Installments months 30% Payable 6 ...</p> <p>Discount -</p> <p>Offer -</p>	<p>Option 2</p> <p><input checked="" type="radio"/> Down payment -</p> <p>Installments months -</p> <p>Discount -</p> <p>Offer -</p>	<p>Option 3</p> <p><input checked="" type="radio"/> Down payment -</p> <p>Installments months -</p> <p>Discount -</p> <p>Offer -</p>	<p>Option 4</p> <p><input checked="" type="radio"/> Down payment -</p> <p>Installments months -</p> <p>Discount -</p> <p>Offer -</p>
---	--	--	--

Special offer

Fully furnished design package

Rental guarantee

Trafo 3000 GBP

Resale -

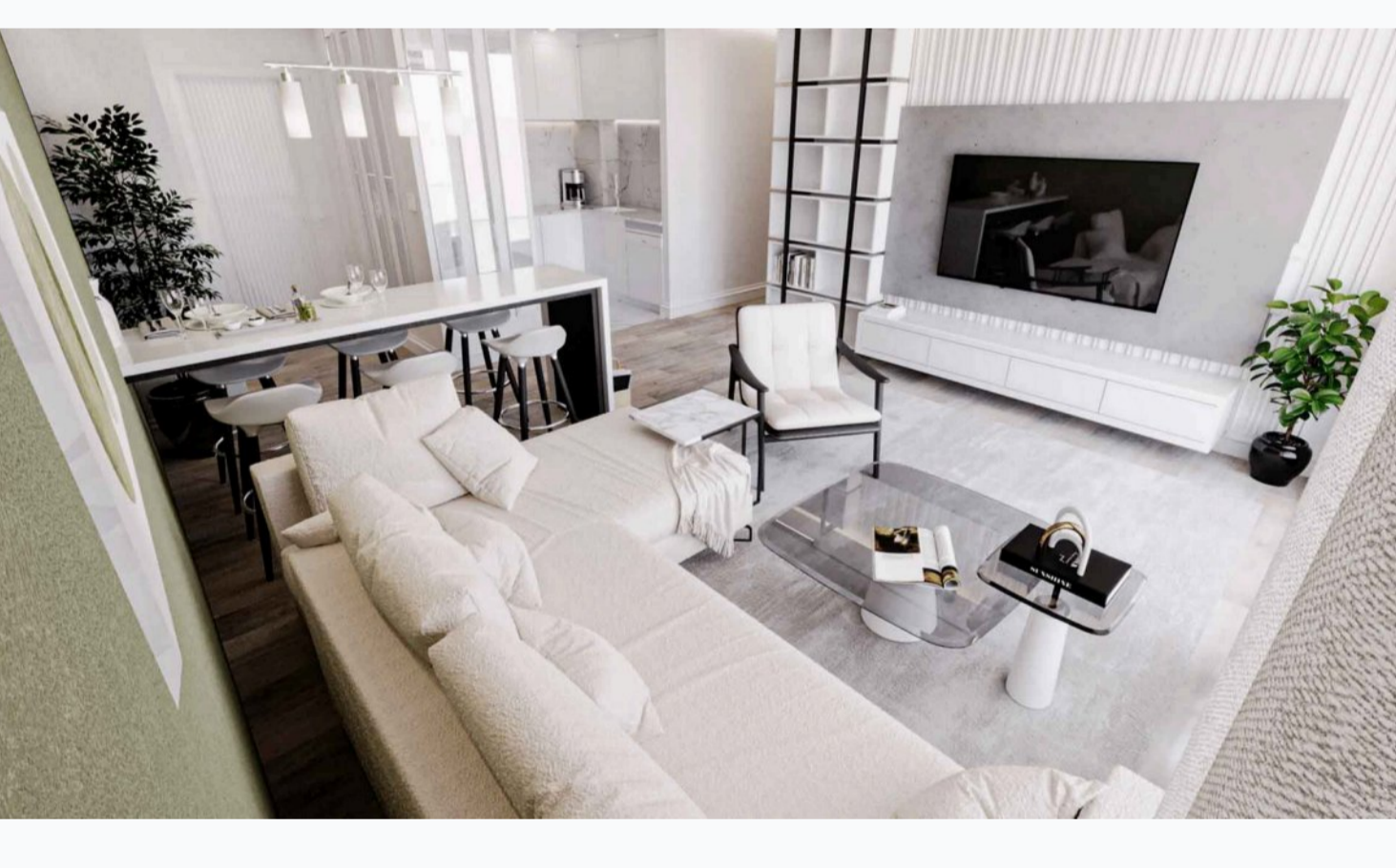
Maintenance fee -

Rental services -

Details

Bedrooms	Subtype	Block	Unit №	Floor	View	Bathroom	Internal area, sq. m	Balcony/ Terrace, sq. m	Rooftop terrace, sq. m	Garden, sq. m	Gross covered area, sq. m	Current price, GBP	Price per sqm, GBP
0-Studio	Flat	11	5	01		1	38	10	33		81		
0-Studio	Flat	12	7	01		1	38	10	33		81		
0-Studio	Flat	12	8	01		1	38	10	33		81		
0-Studio	Flat	13	5	01		1	38	10	33		81		
0-Studio	Flat	13	7	01		1	38	10	33		81		
0-Studio	Flat	5	6	01		1	112	30	90		232		
1+1	Loft	1	1	0		2	65	10			75		
1+1	Loft	1	2	0		2	65	10			75		
1+1	Loft	1	4	0		2	65	10			75		
1+1	Loft	11	1	0		2	65	10			75		
1+1	Loft	12	1	0		2	65	10			75		
1+1	Loft	12	3	0		2	65	10			75		
1+1	Loft	12	4	0		2	65	10			75		
1+1	Loft	13	1	0		2	65	10			75		
1+1	Loft	13	2	0		2	65	10			75		
1+1	Loft	13	3	0		2	65	10			75		
1+1	Loft	13	4	0		2	65	10			75		
1+1	Loft	18	2	0		2	65	10			75		
1+1	Loft	18	4	0		2	65	10			75		
1+1	Loft	19	1	0		2	65	10			75		
1+1	Loft	19	4	0		2	65	10			75		
1+1	Loft	2	2	0		2	65	10			75		
1+1	Loft	2	4	0		2	65	10			75		
1+1	Loft	20	1	0		2	65	10			75		
1+1	Loft	20	2	0		2	65	10			75		
1+1	Loft	20	4	0		2	65	10			75		
1+1	Loft	21	1	0		2	65	10			75		
1+1	Loft	21	2	0		2	65	10			75		

Interior specification



Interior specification

- Air Conditioner
- Ceramic flooring
- Double glazed windows
- High quality internal doors
- Toilet integrated in the walls

Exterior specification



Exterior specification

- Glass fence balcony
- Landscape design
- Terracing with inbuilt lighting & power sockets

Location of complex

