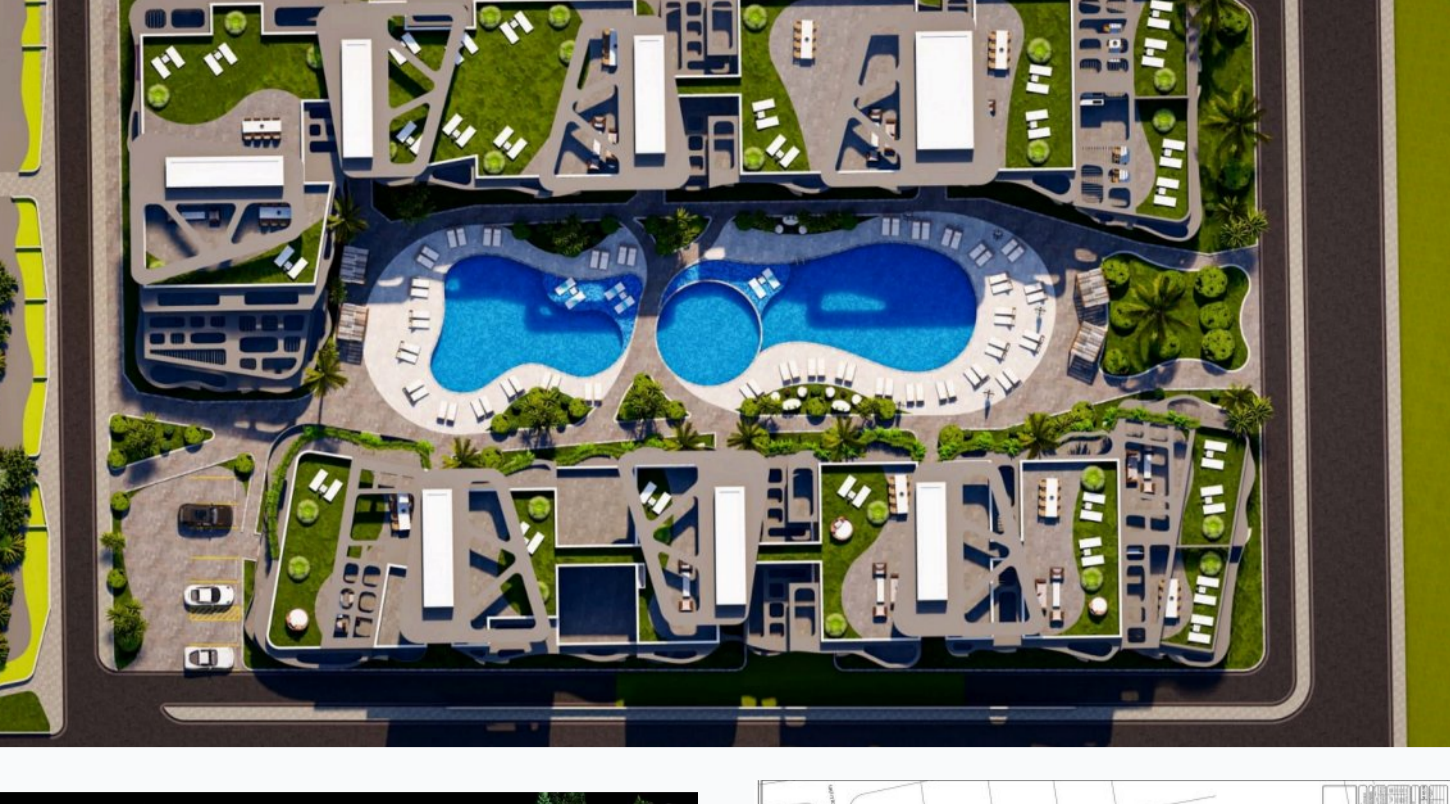


Tremeseli Holding (Developer) + Salamis Sea Palace (Complex)

### Salamis Sea Palace residential complex

Location **Famagusta, Yeni Boğaziçi**



### About the project



Developer	<b>Tremeseli Holding</b>
Start of sale	<b>01.09.2023</b>
Key handover	<b>2025</b>
Houses/blocks	<b>3</b>
Building floor	<b>2</b> Min <b>2</b> Max
Units total	<b>22 - Studio, 40 - 1+1, 39 - 2+1</b>

Distance to the sea - 1000 m

Distance to key locations:  
 Airport 40 min. Supermarket 2 min. Pharmacy 3 min. School 3 min. Kindergarten 9 min. Hospital 8 min.

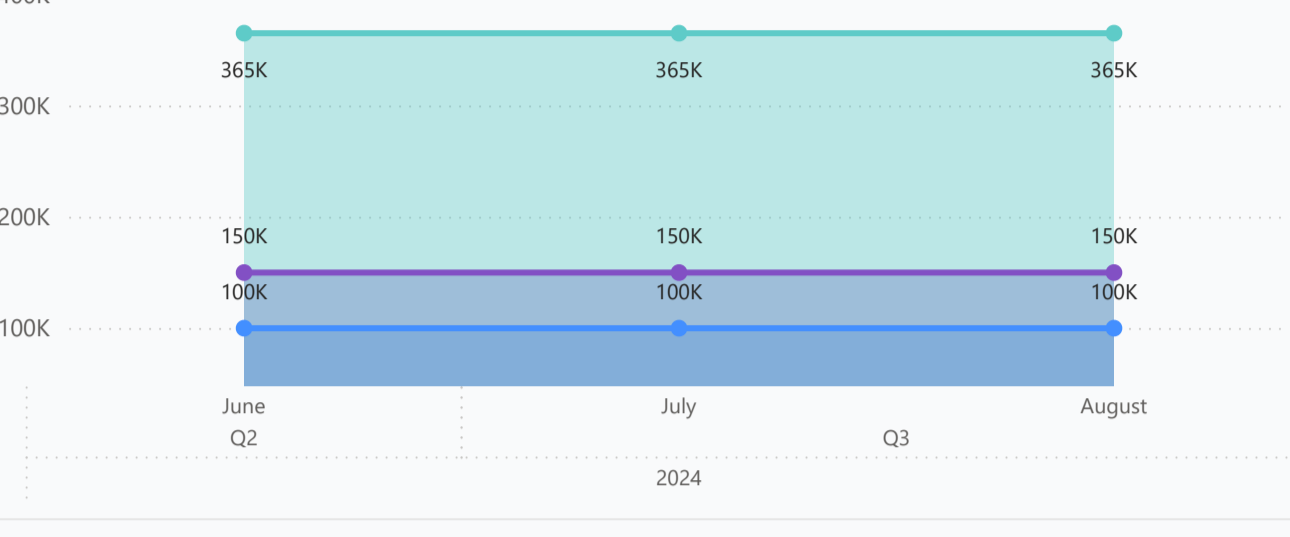
The Salamis Sea Palace residential complex is an exceptional project covering a vast area of 21,400 m<sup>2</sup>, which is the perfect embodiment of modern luxury and comfort.

### Complex infrastructure

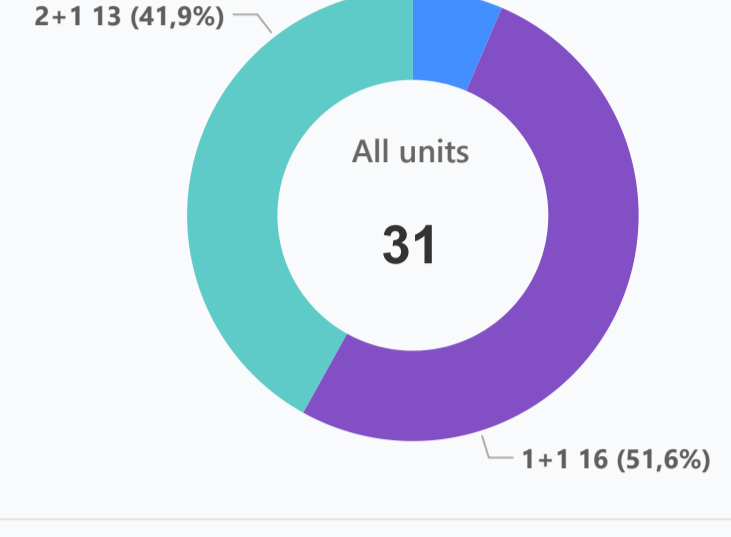
- Bar
- Fitness centr.
- Kid's playground
- Open pool
- Parking
- Restaurant

### Available units **31** / 101 total

#### Median price per unit, K GBP



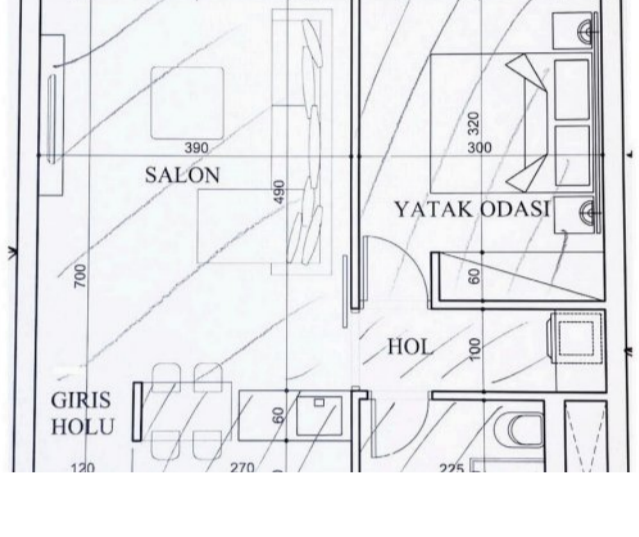
#### Structure of available units



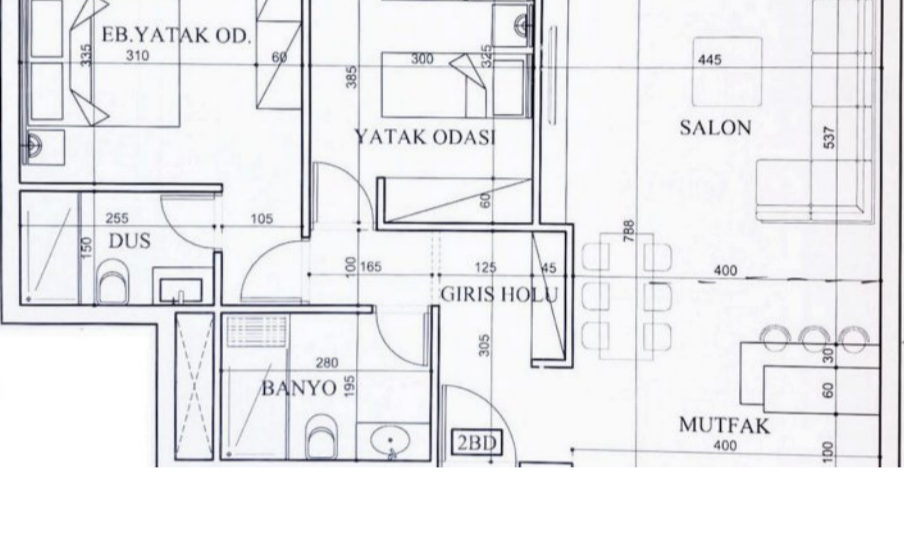
### Plans



0-Studio



1+1



2+1

### Payment plans

Deposit (non-refundable) 5%

Option	Down payment	Installments months	Discount	Offer
Option 1	35%	65% till key	-	-
Option 2	-	-	-	-
Option 3	-	-	-	-
Option 4	-	-	-	-

### Special offer

Fully furnished design package

Rental guarantee

Trafo 1700 GBP

Resale -

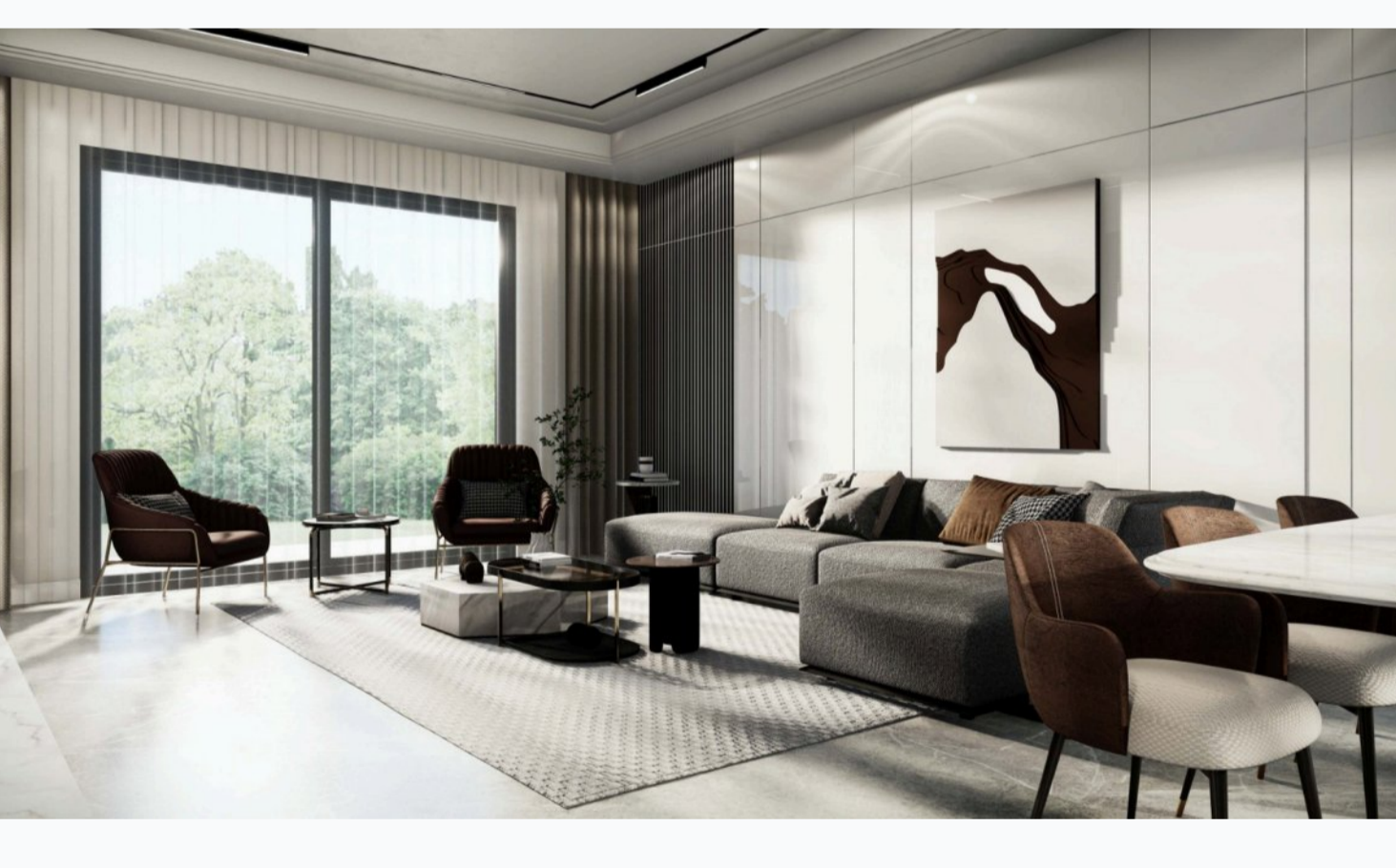
Maintenance fee -

Rental services -

### Details

Bedrooms	Subtype	Block	Unit №	Floor	View	Bathroom	Internal area, sq. m	Balcony/ Terrace, sq. m	Rooftop terrace, sq. m	Garden, sq. m	Gross covered area, sq. m	Current price, GBP	Price per sqm, GBP
0-Studio	Flat	Mermaid Blok	15	0		1	40	5			45	99 800	2 218
0-Studio	Flat	Mermaid Blok	16	0		1	40	5			45	99 800	2 218
1+1	Flat	Aphrodite Blok 1	11	0		1	60	8			68	149 800	2 203
1+1	Flat	Aphrodite Blok 1	14	0		1	60	8			68	149 800	2 203
1+1	Flat	Aphrodite Blok 1	19	0		1	60	8			68	149 800	2 203
1+1	Flat	Aphrodite Blok 1	20	0		1	60	8			68	149 800	2 203
1+1	Flat	Aphrodite Blok 1	5	0		1	60	8			68	149 800	2 203
1+1	Flat	Aphrodite Blok 1	8	0		1	60	8			68	149 800	2 203
1+1	Flat	Aphrodite Blok 2	3	0		1	60	8			68	149 800	2 203
1+1	Flat	Aphrodite Blok 2	5	0		1	60	8			68	149 800	2 203
1+1	Flat	Aphrodite Blok 2	1	0		1	60	9			69	149 800	2 171
1+1	Flat	Aphrodite Blok 2	17	0		1	50	12			62	149 800	2 416
1+1	Loft	Aphrodite Blok 2	22	01		1	81		8		89	180 000	2 022
1+1	Flat	Mermaid Blok	5	0		1	60	8			68	149 800	2 203
1+1	Flat	Mermaid Blok	7	0		1	60	8			68	149 800	2 203
1+1	Flat	Mermaid Blok	8	0		1	60	8			68	149 800	2 203
1+1	Flat	Mermaid Blok	11	0		1	65	8			73	149 800	2 052
1+1	Loft	Mermaid Blok	26	01		1	87			8	95	180 000	1 895
2+1	Loft	Aphrodite Blok 1	30	01		2	114			33	147	365 000	2 483
2+1	Loft	Aphrodite Blok 1	37	01		2	114			57	171	365 000	2 135
2+1	Loft	Aphrodite Blok 1	38	01		2	114			57	171	365 000	2 135
2+1	Loft	Aphrodite Blok 1	26	01		2	114			60	174	365 000	2 098
2+1	Loft	Aphrodite Blok 1	27	01		2	114			60	174	365 000	2 098
2+1	Loft	Aphrodite Blok 1	42	01		2	114			109	223	388 000	1 740
2+1	Loft	Aphrodite Blok 2	23	01		2	114			59	173	365 000	2 110
2+1	Loft	Aphrodite Blok 2	24	01		2	114			59	173	365 000	2 110
2+1	Loft	Aphrodite Blok 2	27	01		2	114			98	212	388 000	1 830
2+1	Loft	Aphrodite Blok 2	28	01		2	114			129	243	388 000	1 597

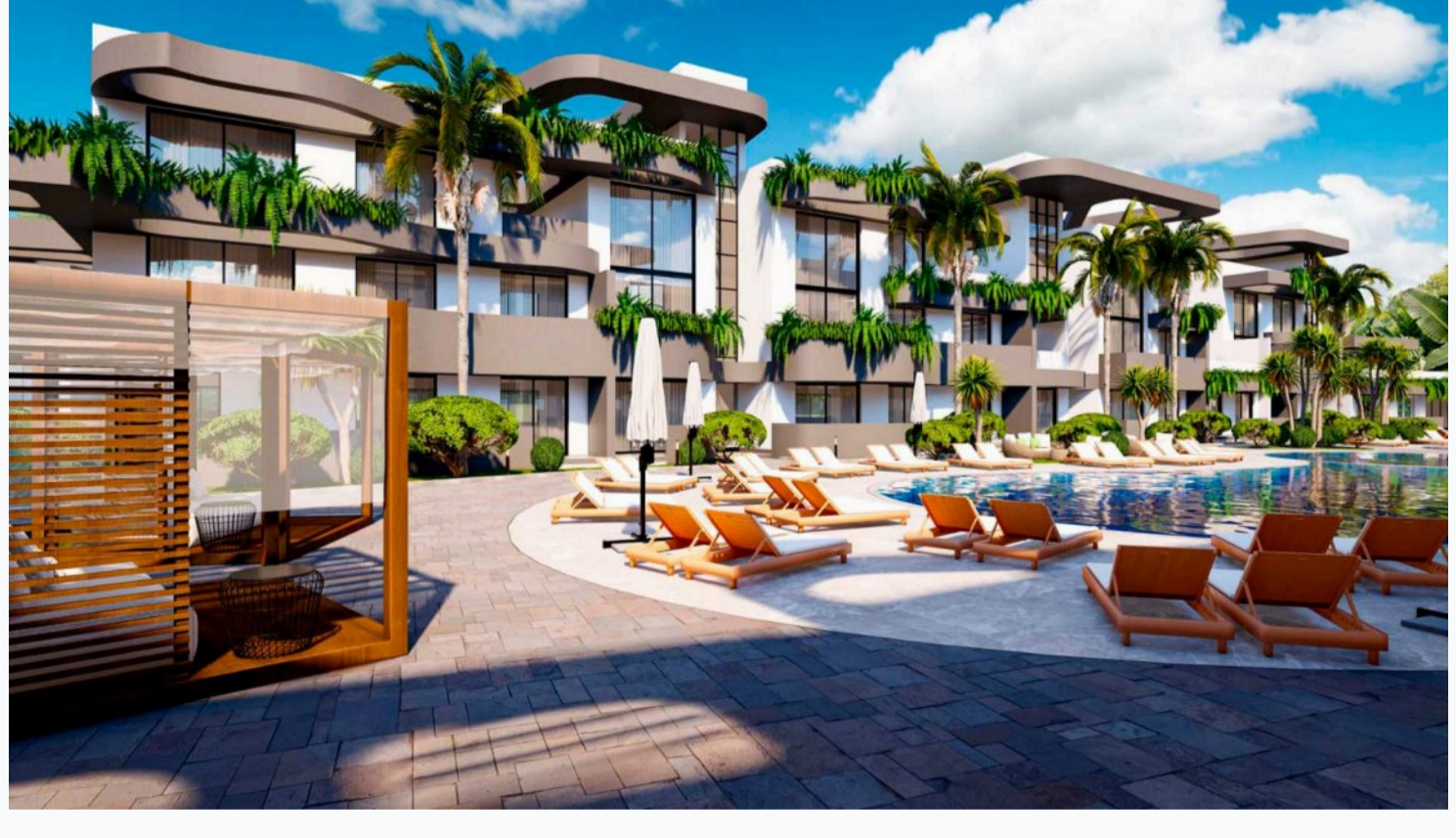
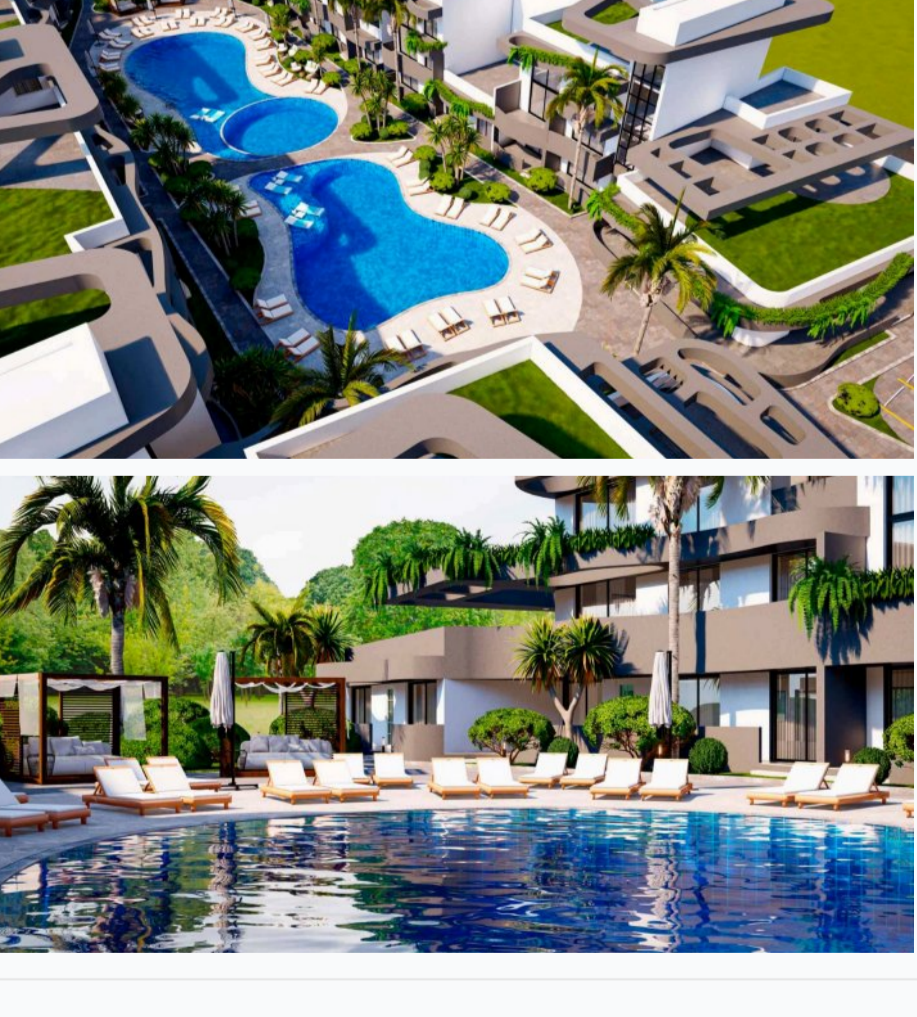
### Interior specification



### Interior specification

- Ceramic flooring
- Kitchen cabinets up to the ceiling
- Laminate flooring in the bedrooms

### Exterior specification



### Exterior specification

- Private Garden
- Terracing with inbuilt lighting & power sockets

### Location of complex

