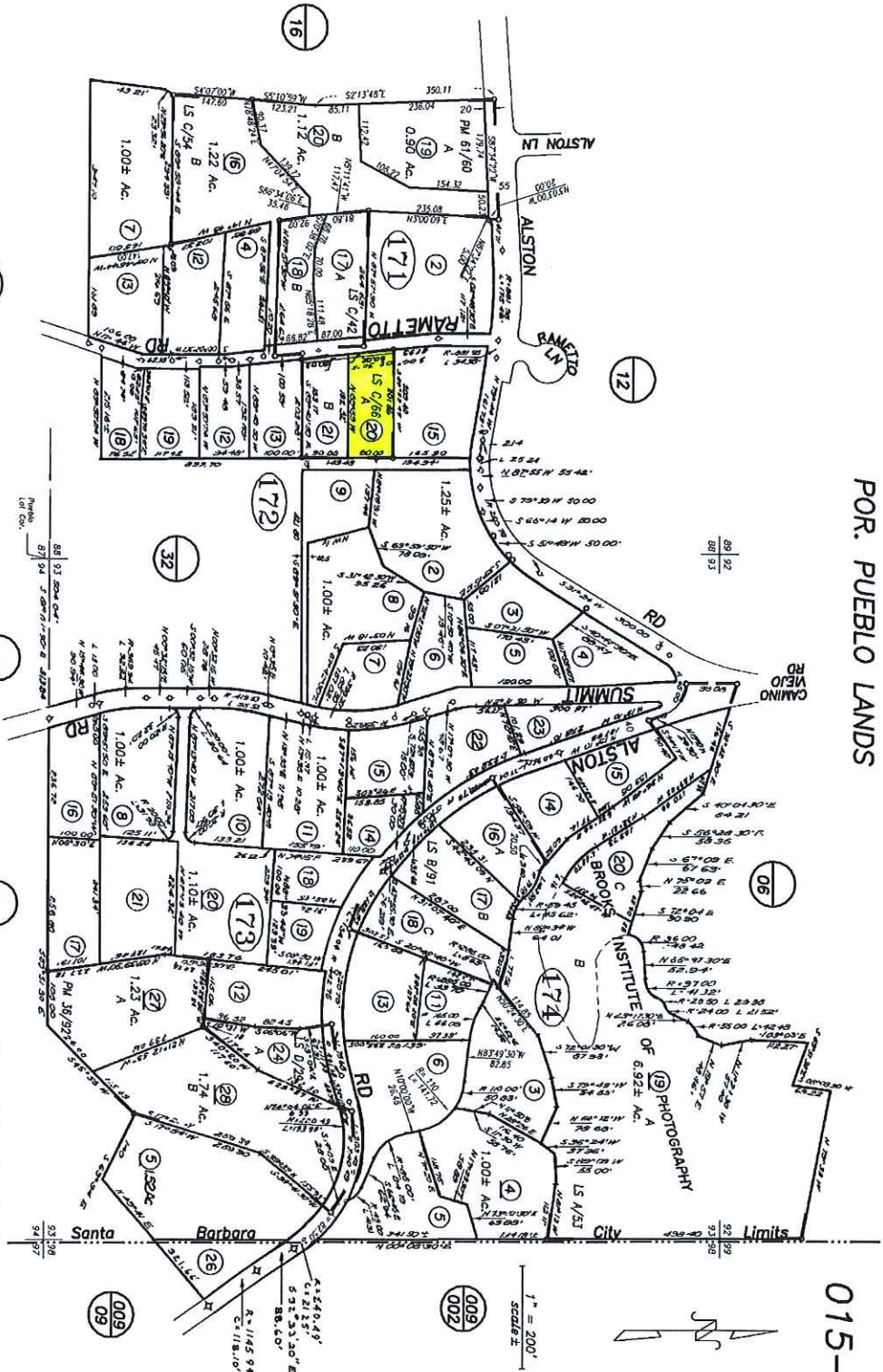


POR. PUEBLO LANDS

015-17



04/04/2008 R.M. Bk. 61 , Pg. 60-61 , Tract 20749

NOTICE
Assessor Parcels are for tax assessment purposes only and do not indicate either parcel legality or a valid building site.

City of Santa Barbara
Assessor's Map Bk, 015 -Pg, 17
County of Santa Barbara, Calif.

(12/05) 171-14 info 371-18 & 20