

# **User Guide**

---


## **30W Long-range Waterproof PoE Extender**

This manual applies to the model for 30W Long-range Waterproof PoE Extender, if there is no special instructions in the text, the product illustration to Long-range Waterproof Extender for example.

## Packing List

When using the Switch for the first time, carefully open the packing box. The packing box should contain the following items:

- Extender \*1
- User Guide \*1
- Accessories (Waterproof Connector \*2)

 **Note:** Precision devices are built in the device, please handle them carefully to avoid violent vibration, which may affect the performance of the device. If you find that the equipment is damaged or any parts are lost in the process of transportation, please inform us, we will give you a proper solution as soon as possible.

## Chapter 1 Product Introduction

### 1.1 Product Overview

This product is our self-developed 30W Long-range Waterproof PoE Extender, which provides 2\*10/100Mbps RJ45 ports, where the input port is connected to a PoE Switch and the output port is connected to an IP terminal device. The 2 extenders with PoE Switch (output port to PoE Switch) can extend 10Mbps network data up to 800 meters, plug and play.

## Chapter 2 Product Appearance Description

### 2.1 Front Panel

The front side consists of output and input ports, as shown in the figure below:

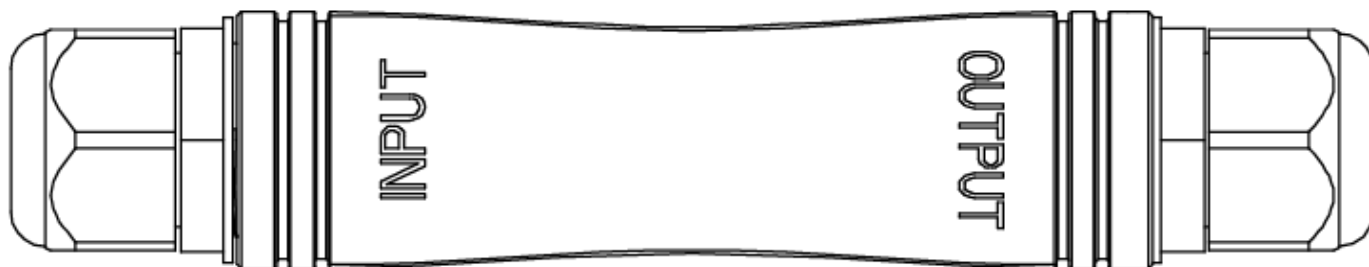


Figure 2-1 30W Long-range Waterproof PoE Extender front panel

### 2.2 Back Panel

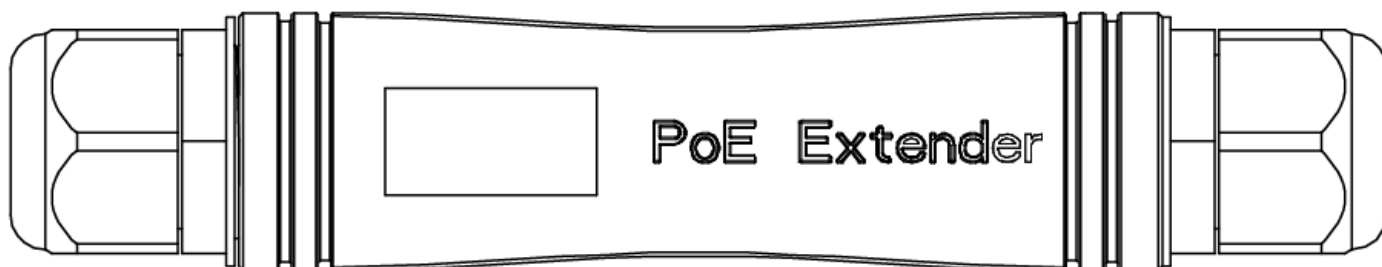


Figure 2-2 30W Long-range Waterproof PoE Extender upper panel

## 2.3 Left Panel

Schematic diagram of left panel: INPUT port

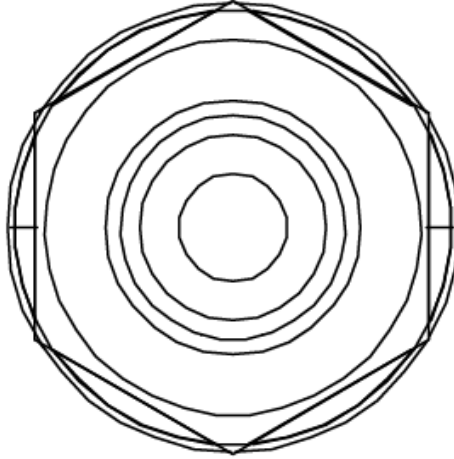


Figure 2-3 30W Long-range Waterproof PoE Extender left side view

## 2.4 Right Panel

Schematic diagram of left panel: OUTPUT port.

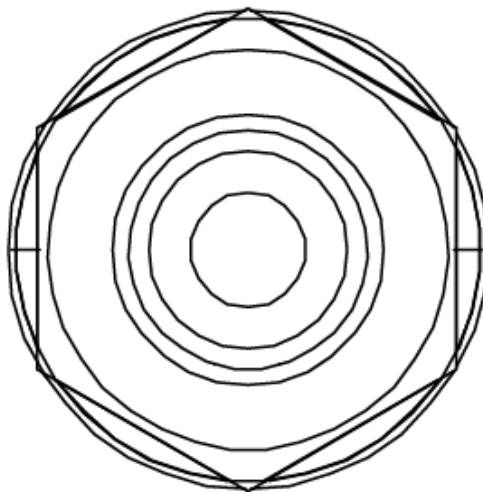


Figure 2-3 30W Long-range Waterproof PoE Extender right side view

## Chapter 3 User Guide

This section is intended to help users correctly install and safely use the device.

### 3.1 Notes on Installation and Use



**Precautions:** To avoid equipment damage and personal injury, observe the following precautions:

- The nut of the waterproof connector should be tightened completely with the thread of the connector to fit the hexagonal plane, otherwise it will easily lead to water ingress and damage to the machine;
- Do not place the machine near water or any damp area. Prevent water or moisture from entering the machine chassis;
- Do not place the machine on an unstable case or desk. The machine might be damaged severely in case of a fall;
- Ensure proper ventilation of the equipment room and keep the ventilation vents of the machine free of obstruction;
- Make sure that the operating voltage is the same one labeled on the machine;
- To avoid the danger of electric shock, do not open the chassis without authorization; If any fault occurs, contact professional maintenance personnel.

## 3.2 Application Schematic

Application diagram of PoE Extender. Pay attention to the direction of INPUT and OUTPUT.

- When a single extender is used, the input port (INPUT) is connected to a PoE Switch and the output port (OUTPUT) is connected to an IP terminal device, which can extend 100Mbps data by 100M;
- When two extenders are used together, the output port (OUTPUT) of one extender is connected to a PoE Switch, the input port (INPUT) is connected to the input port (INPUT) of the other extender, and the output port (OUTPUT) is connected to an IP terminal device. It can extend 100Mbps data by 300m and 10Mbps data by 800m.

(Please see the application schematic for specific connection methods).

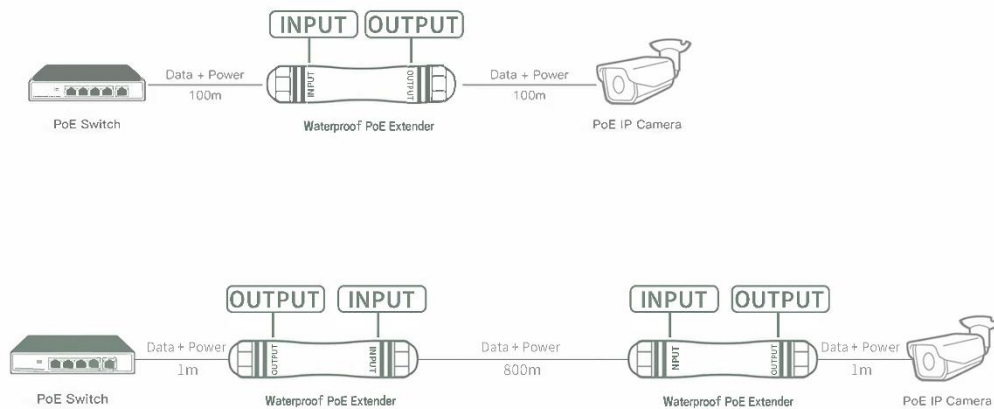


Figure 3-1 Extender application schematic

## Appendix: Technical Specifications

Model	30W Long-range Waterproof PoE Extender
Standard	IEEE802.3, IEEE802.3u, IEEE802.3ab, IEEE802.3x, IEEE802.3af, IEEE802.3at, IEEE802.3bt
Port	2*10/100Mbps RJ45 ports
Network Media (Cable)	10BASE-T: UTP category 3,4,5 cable ( $\leq 100\text{m}$ ) 100BASE-TX: UTP category 5 cable ( $\leq 100\text{m}$ )
Dimensions (L*W*H)	156.5*29*29mm
PD Port Input	IEEE802.3af/at/bt
PoE Power Output	IEEE802.3af/at/bt
PSE Power On RJ45	Anode1/2 Cathode3/6 ,Anode4/5 Cathode7/8
Temperature	Operating Temperature:-1 0°C ~ 55 °C Storage Temperature: -40 °C ~ 70 °C
Humidity	Operating Humidity: 10% ~ 90% non-condensing Storage Humidity: 5% ~ 90% non-condensing