



2-Wire HD Solution Technical Training



2-wire Video Intercom

HIKVISION®

Comparison between 2-wire IP & 2-wire HD

NEW

2-wire IP Products

2-wire HD Products

Modular Door Station



DS-KD8003Y-IME2 series



DS-KD7003EY-IME2 series

Sub-module



DS-KD-KK
Nametag module



DS-KD-KK/S
Stainless steel
Nametag module



DS-KD-IN
Indicator module



DS-KD-KP
Keypad module



DS-KD-KP/S
Stainless steel
Keypad module



DS-KD-BK
Blank module



DS-KD-E
EM/M1
reader module



DS-KD-INFO
INFO module



DS-KD-TDM
Touch & display
module



DS-KD-DIS
(2-wire HD will
support on H2)



DS-KD-MFB
DS-KD-MFB/S
Fingerprint module

Indoor Station



DS-KD8003Y-IME2 series



DS-KD7003EY-IME2 series



DS-KH7000-E2
audio



DS-KH7300EY-(W)T(H)(I)E2
PMR/Handset

Distributor



Distributor
DS-KAD704 series



Distributor
DS-KAD706 series



Distributor
DS-KAD7060EY



Building distributor
DS-KAD7060EY-S
For expend more buildings only



Floor shunt
DS-KAD7061EY

Topology

Single Building Topology

1 power supply for whole system

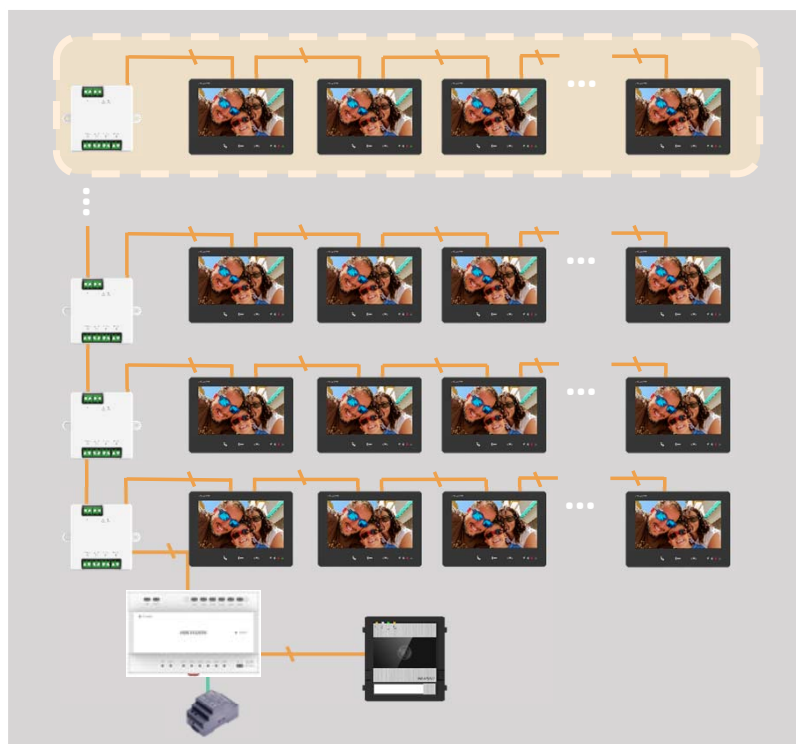
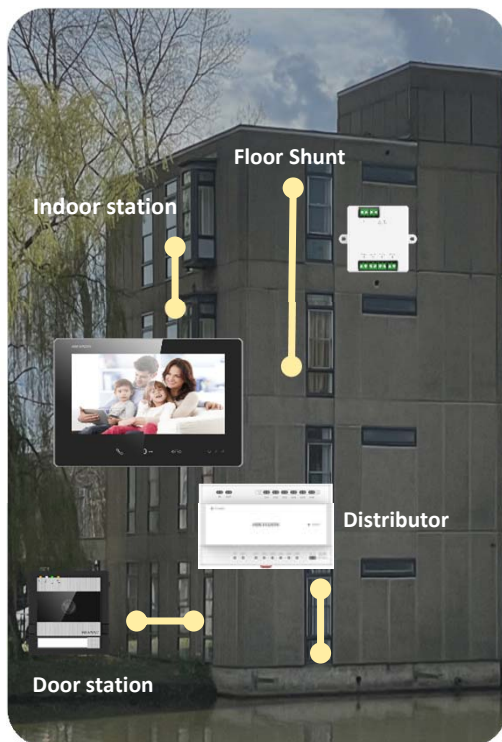
- Maximum **22 indoor station with W** or **64 without W** in one building. **(the cable need to be better than AWG20)**
- Maximum **16 floor shunt 7061** can be cascaded

HIKVISION

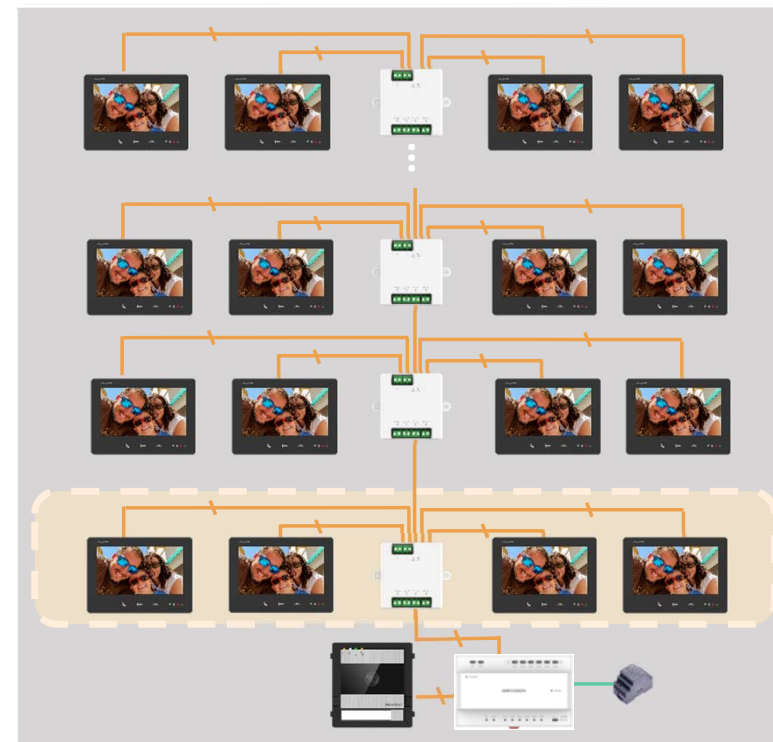
— 2 wire cable

— Power cable

Daisy Chain Connection



Star Connection



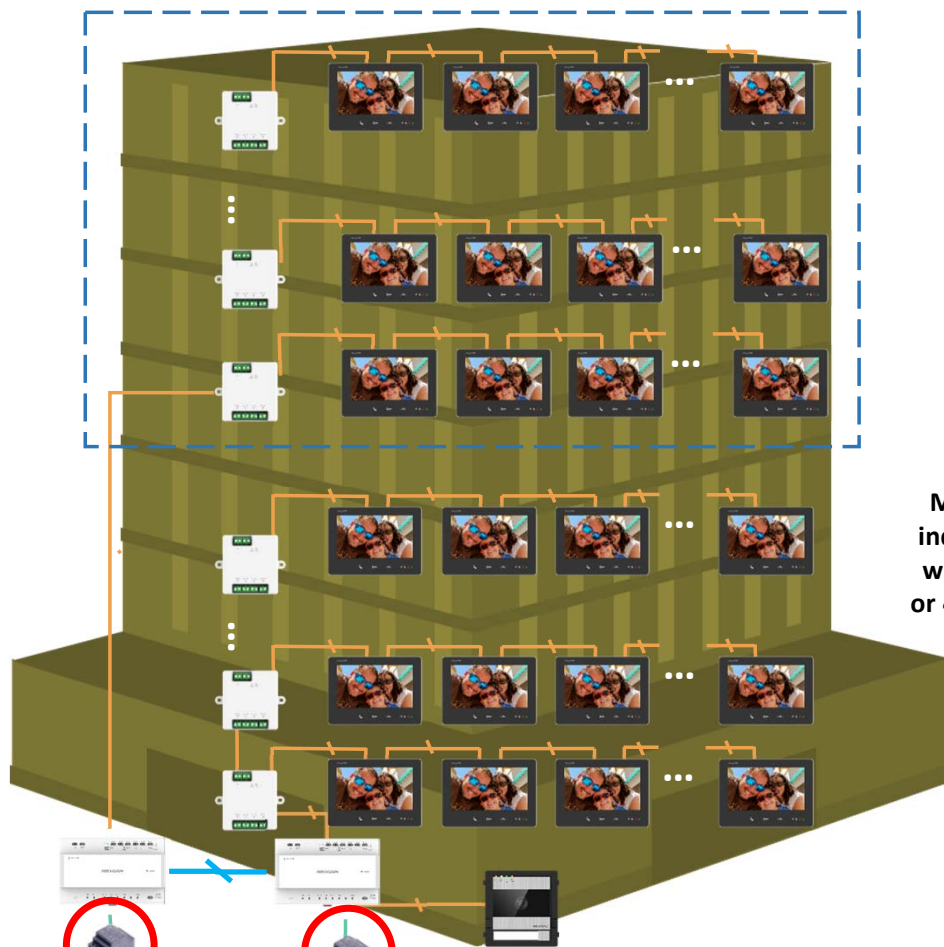
First Choice for Security Professionals

Note: Due to system power consumption limitations, 7060 needs to be cascaded and powered separately when maximum number of indoor stations are exceeded (next page)

Topology

System Extension In One/Two Building

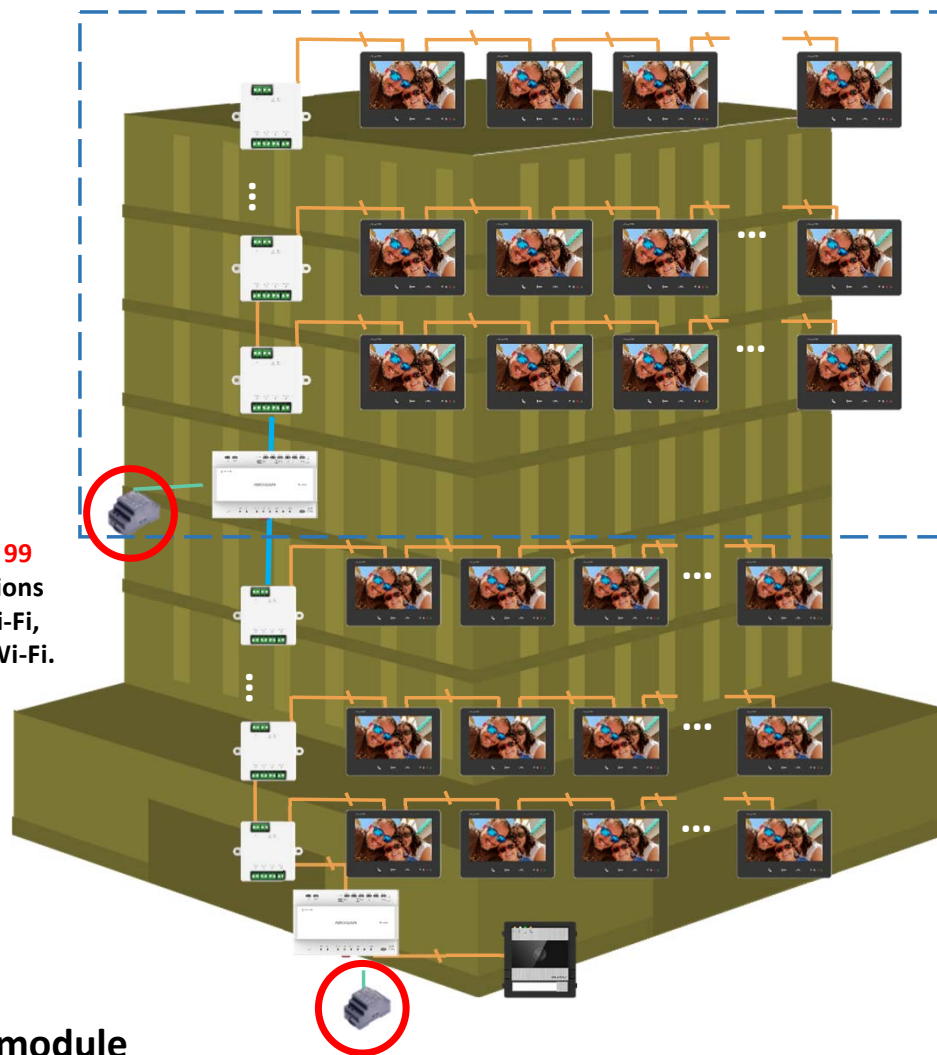
HIKVISION



First Choice for Security Professionals

Maximum 99
indoor stations
without Wi-Fi,
or 44 with Wi-Fi.

2 power supply module



Maximum 16 distributors (DS-KAD7061) can be cascaded.

Topology

Multiple Buildings Topology

HIKVISION

- Up to **16** buildings can be connected in the system via **KAD7060EY-S**
- Up to **10** outer door stations can be connected.
- Up to **16** sub door stations can be connected.



Hardware

Door Station DS-KD7003EY-IME2

HIKVISION

2,000

Users

64

Indoor Station (without Wi-Fi)

16

Sub Door Stations

Higher protection level

IK08 & IP65

Excellent Product Design

- HD images with **WDR** and **wide FOV**
- Compatible with existing sub-modules (DIS is not supported for now)

Easy to Use

- Support mobile **web configuration** (AP mode)
- **DEC knobs** configuration
- **Plug & play**
- Multiple indicators--Opening door, calling, on call, in use

More Functions and Extensions

- Supports **two-lock** control
(1 relay Max 30VDC, 2A & 1 DC pulse, 20V 4A impulsive, 300mA holding current, 30 ohm max)
- Compatible with competitive mounting box



Flexible Adjusted Button



DS-KD-KK
Nametag module



DS-KD-IN
Indicator module



DS-KD-BK
Blank module



DS-KD-INFO
INFO module



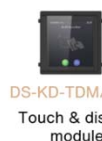
DS-KD-E/M
EM/M1 reader module



DS-KD-DIS
Display module



DS-KD-KP
Keypad module



DS-KD-TDM/TDE
Touch & display module

Note:

DS-KD-DIS module is not supported at present
TDM module please update in AP mode to latest version
V1.0.1_231008 or later

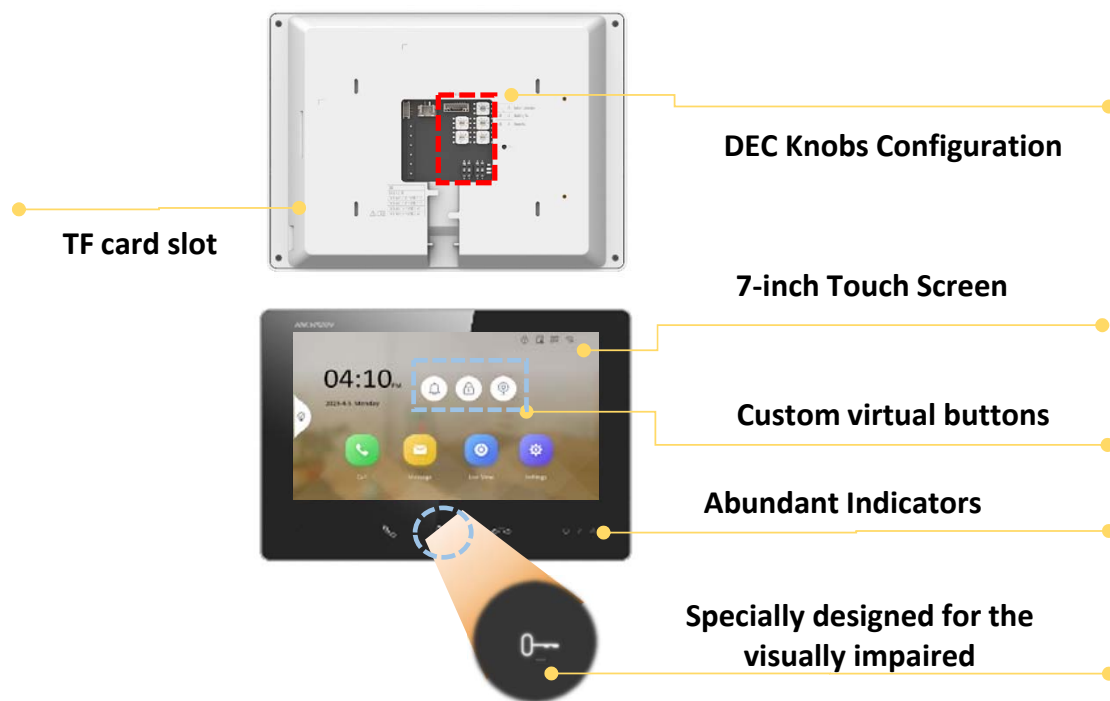


First Choice for Security Professionals

Hardware

Indoor Station DS-KH7300-(W)TE2

HIKVISION



DS-KH7300EY-WTE2 \ DS-KH7300EY-TE2

Note: The unlock button only works in live view or calling page

Excellent Product Design

- **7"** touch screen with 1024*600 **high resolution**
- 3 touch buttons, **physically challenged friendly**

Easy to Use

- **DEC knobs** configuration
- Supports different connection **topologies**
- **Plug & play**
- Supports **Hik-Connect** App (model with W)
- Max. 4 custom virtual buttons
- Multiple indicators--Wi-Fi, power, mute, in use

More Functions and Extensions

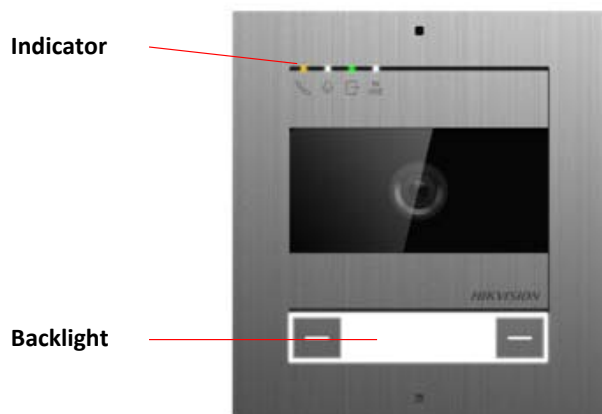
- View live view of door stations
- Upgrade via TF card
- Supports Professional Studio / Trade button function (Open doors automatically)
- Supports floor call (Used as a door bell)

First Choice for Security Professionals

Hardware

Door Station DS-KD7003EY-IME2

HIKVISION



The button backlight indicates the AP mode status:
1. When the door station is powered on for the first time, the AP will be enabled automatically and the backlight will be off

2. When AP is enabled by long pressing for 10s, the back light will flash slow for 2 minutes

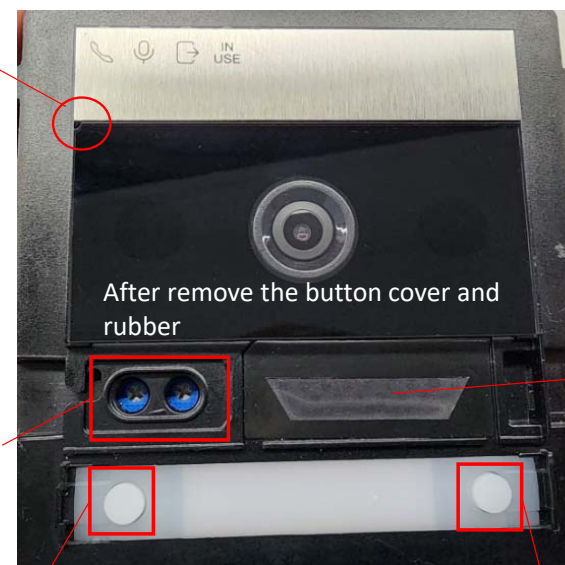
3. Five minutes before the AP (30 minutes time out) close, it will flash fast

Microphone



Microphone(left) and speaker(right) volume adjustment

The screw driver is inside package



Speaker

Operation	Sound	Function	Backlight
Long press for 10 s	1 Beep	Enable/Extend AP Mode	Flashing
Long press for 15 s	2 Beeps	Disable AP Mode	/
Press	/	Call Room No.2	/

Operation	Function	Sound
Long press for 10 s	Pairing with indoor station (Door Station)	Prompt Sound: [Paring...]
	Synchronizing contact list and custom room No. information (Outer Door Station)	1 Beep
Press	Call Room No.1	/

First Choice for Security Professionals

Note: After long press and hear the beep sound, please remove finger from the front button to take effect.

Hardware

Door Station DS-KD7003EY-IME2



HIKVISION

Reset button:

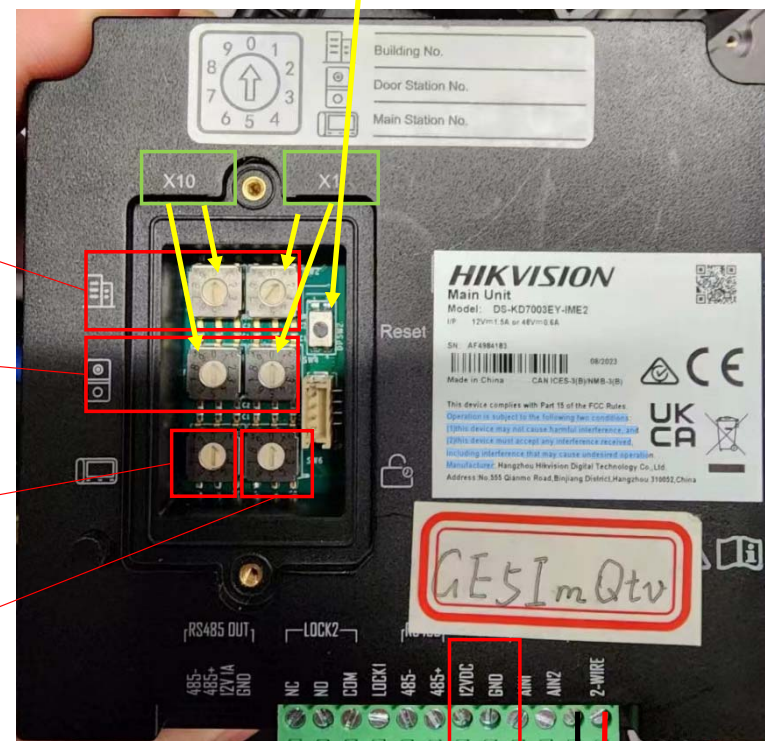
Press 5s (1 beep) to reset AP mode password
10s (2 beeps) to restore factory setting

Building No.
(1-99)

Door Station No.
0: main door station
1-16: sub door station
90-99: outer door station

Main Station No.
(Reserved)

Lock Open Duration (s)
1-10s



12V DC 1.5A external power input interface

Non-polarity

DS-KAD7060EY

First Choice for Security Professionals

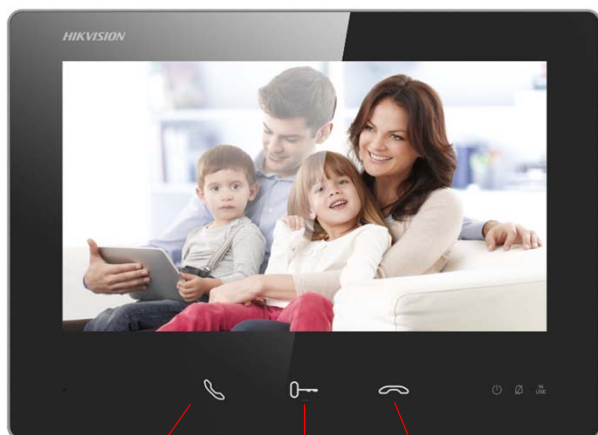
Note:

1. After long press and hear the beep sound, please remove finger from reset button in the back to take effect.
2. If power door station with 12V DC input interface, we still need to connect 2 wire interface to communicate with distributor and indoor station

Hardware

Indoor Station DS-KH7300-(W)TE2

HIKVISION



Answer

Unlock

Hang up

Tap any of 3 button to light up the screen
The screen will not work before light up the screen

The screen will be off after **10s** (not configurable) if no operation (including press the button, touch the screen, call from door station, remote unlock/Live view/Enable two-way audio from Hik-Connect APP. upgrade indoor station firmware from door station)

First Choice for Security Professionals

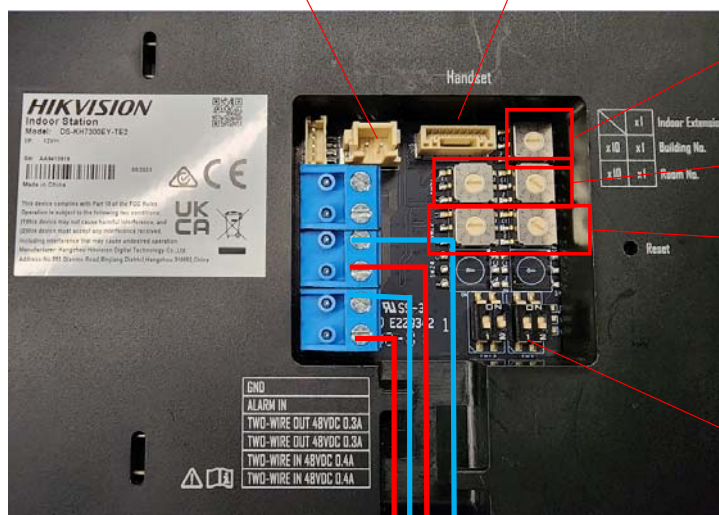
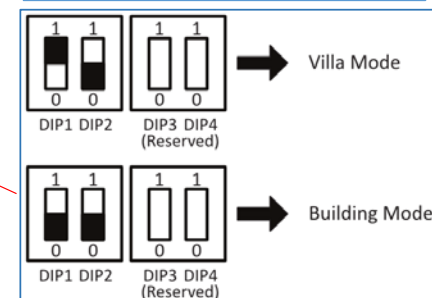
12V DC power input, only under villa mode need external power supply

Reserved handset interface

0: main indoor station
1-3: indoor extension
4-9: reserved

Building No: 1-99
both main and extension must set

Room No: 1-99
both main and extension must set



Non-polarity

KAD7060EY/KAD7061



Device Mode Settings

Villa Mode: Under the villa mode, the device needs to be powered by 12 VDC power supply. More than one device can be lightened up; when the extension is called, it can also be lightened up and intercoming via videos.

Building Mode: In one power supply system, up to 4 indoor stations can be wired and up to 1 indoor station can be normally used at the same time. When other devices are lightened up, the IN USE indicator will also be lightened up. Separate power supply is not supported. When the extension is called, the screen cannot be lightened up.

Note:

If 12V DC is connected in villa mode, we still need to connect 2 wire cable to distributor DS-KAD7060EY or DS-KAD7061EY, in order to communicate with door station

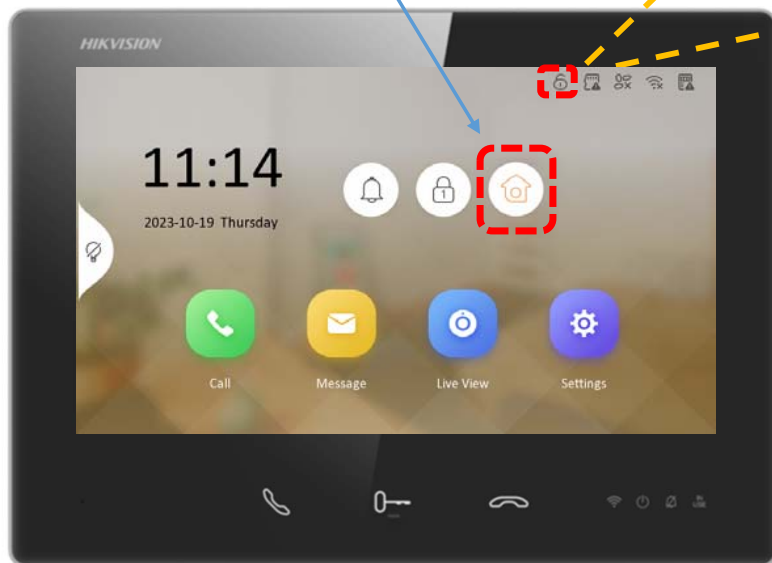
Hardware

Professional Studio

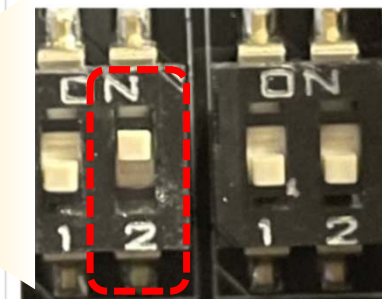
HIKVISION

In this mode, the door will open automatically when indoor station receives call from door station

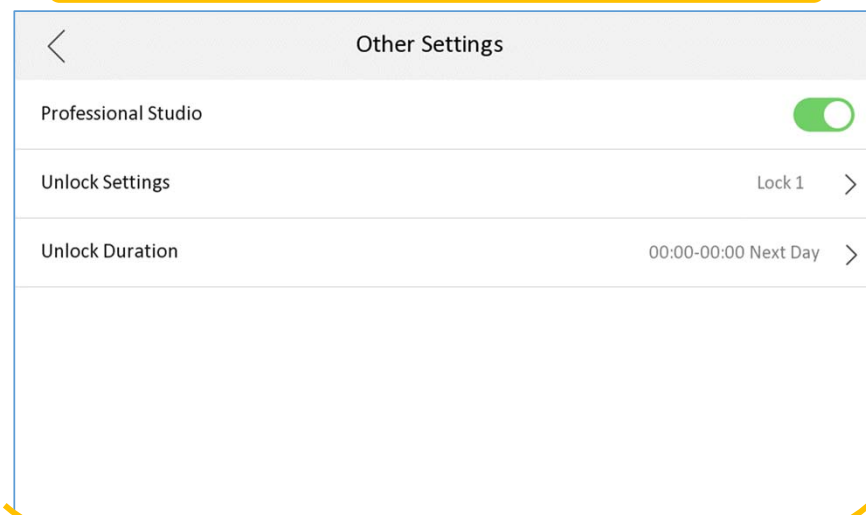
You can also temporary enable or disable this function from the shortcut



Turn on the DIP 2



Settings > Calling Settings > Other Settings



First Choice for Security Professionals

Hardware

Floor shunt DS-KAD7061-EY

HIKVISION

DS-KAD7060EY

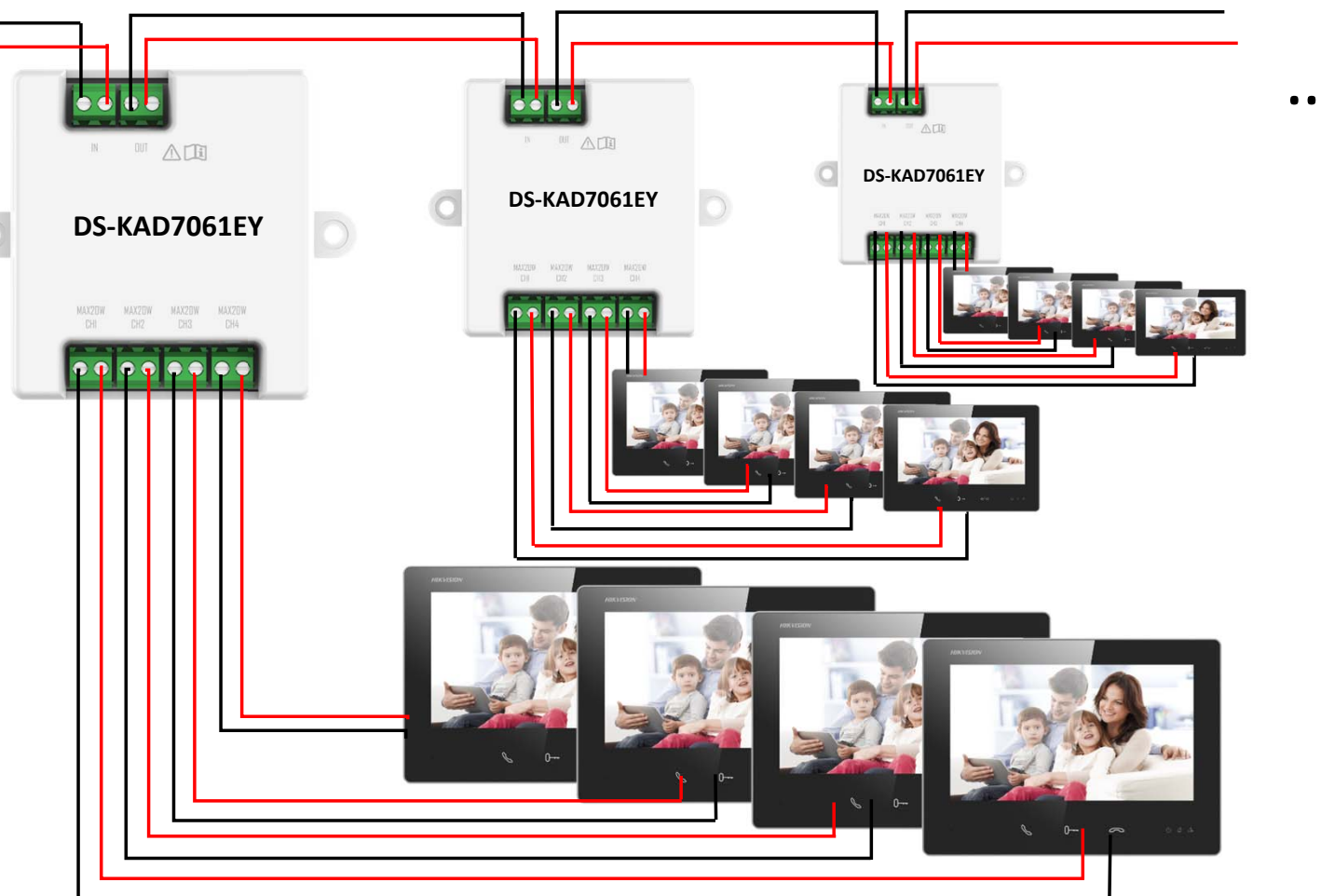
- **Small-size** device, save installation space
- **6 indicators** show whether the device is working properly
- **No power supply** required
- Maximum 16 KAD7061 cascading

70.6mm

60mm

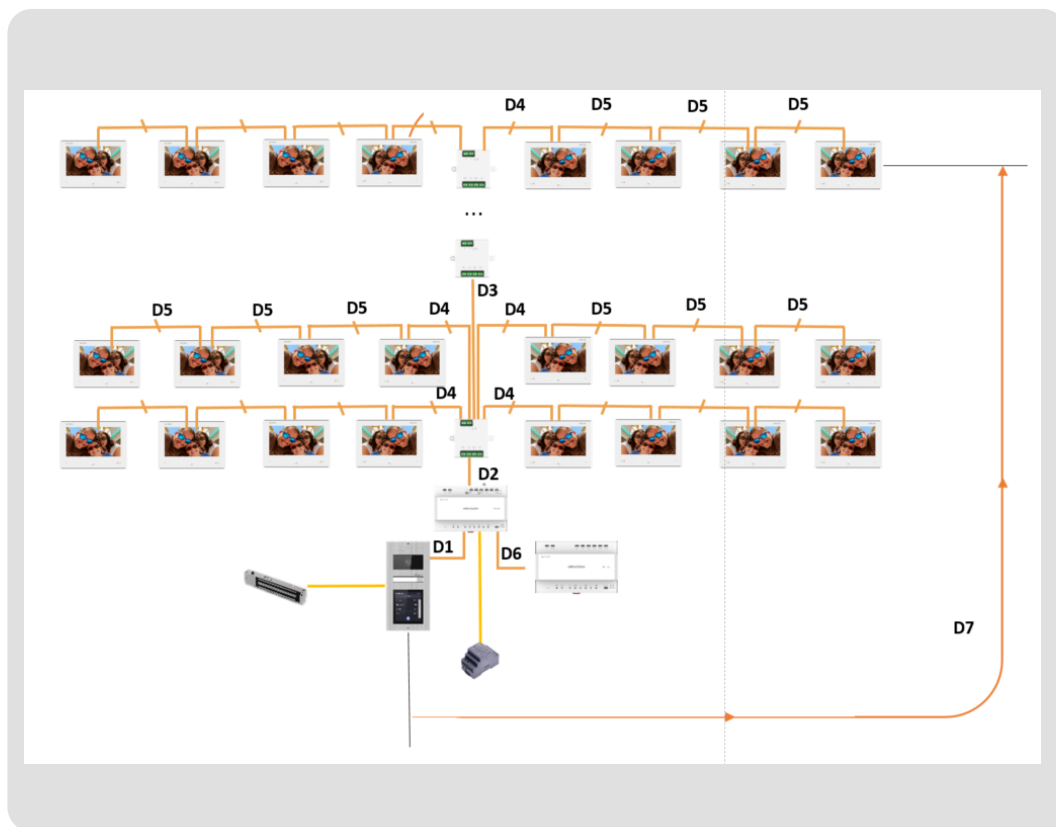
25mm

First Choice for Security Professionals



2-wire Video Intercom

Maximum system wiring capacity



Wire	D1	D2	D3	D4	D5	D6	D7
UTP 5 0.2 mm ² (Cat.5) AWG24	150m	60m	60m	60m	100m	60m	140m
0.28 mm ² (TP) AWG23	150m	40m	40m	40m	80m	40m	160m
0.5 mm ² (P) AWG20	150m	60m	60m	60m	100m	60m	180m
1 mm ² (P) AWG17	150m	60m	60m	60m	100m	60m	260m
1 mm ² (TP) AWG17	150m	40m	40m	40m	80m	40m	260m
1.5 mm ² (P) AWG15	150m	40m	60m	60m	100m	60m	260m

Max. 48 indoor stations without Wi-Fi,
22 with Wi-Fi

Max. 64 indoor stations without Wi-Fi,
22 with Wi-Fi

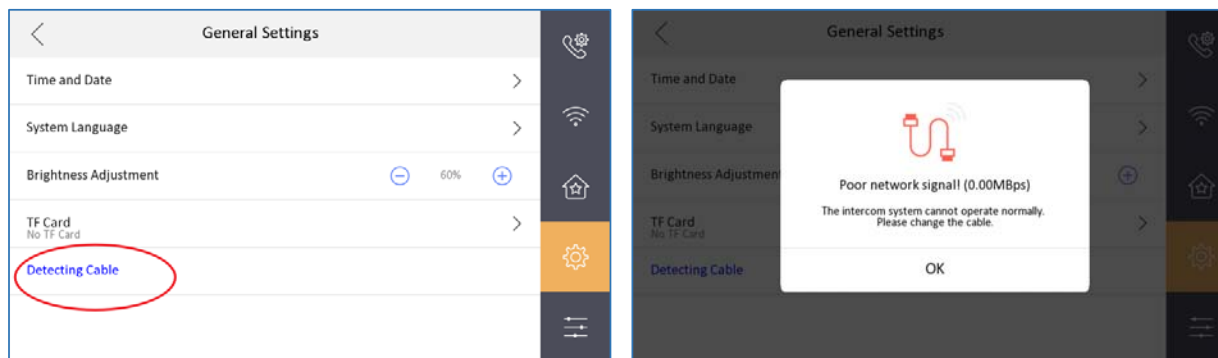
Note: Cat.5 = Category 5 line / TP = Twisted-pair cable / P = parallel cable

Cabling

Tips for Cables and Wiring

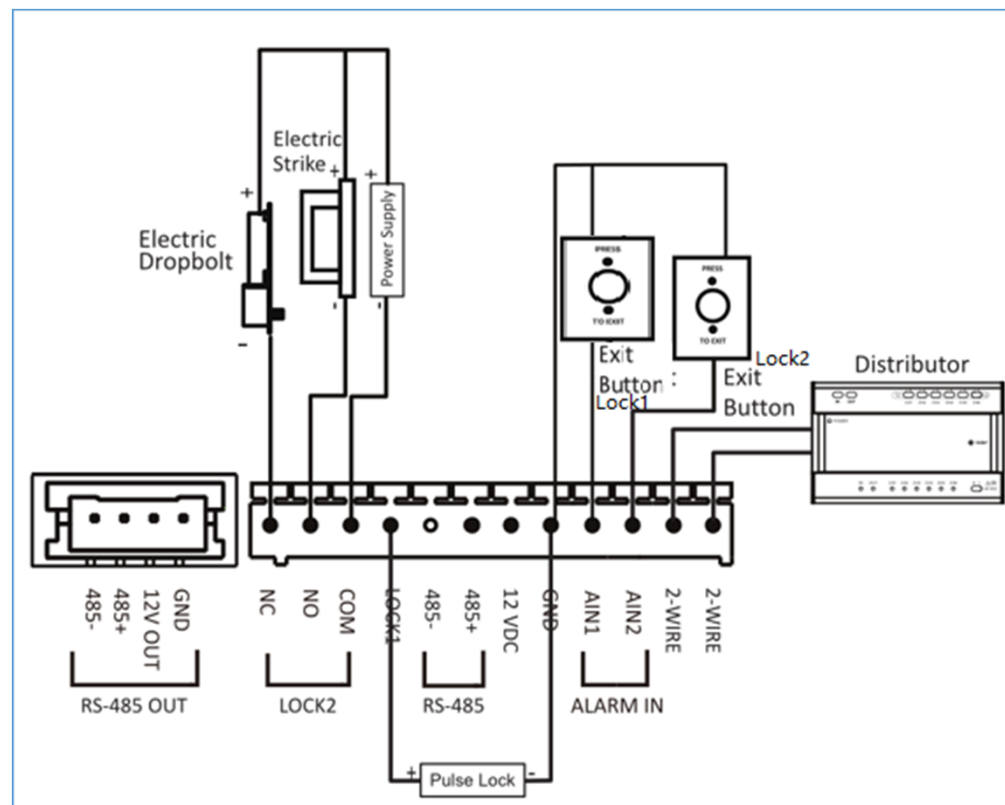


- When using parallel lines, it is suggested to use those with shielding layer. If dual core or multiple core parallel lines without shielding layer are routed, stability of signal transmission can be effected. You need to run a test before installation.



Cabling

Door Station Wiring Interface



First Choice for Security Professionals

Advanced Configuration-main door station

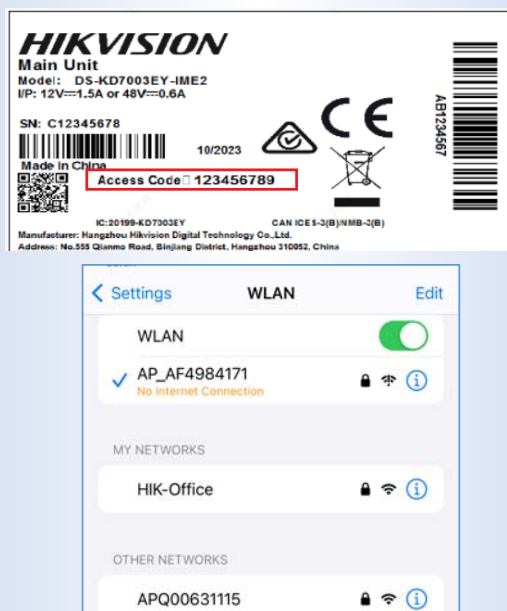
Configure with mobile phone

HIKVISION



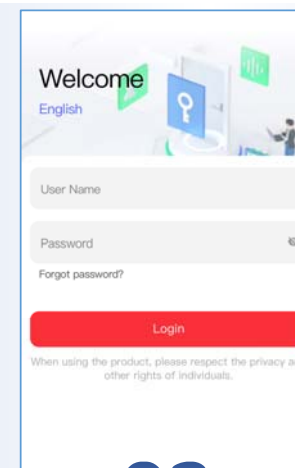
01

Long press the left button for 10s then the device enable the AP mode



02

Using a mobile phone search the device's Wi-Fi. The name is AP_device SN, and the password is the device's initial password on the label (access code).



03

After connecting to the Wi-Fi, the device log-in page will prompt automatically.

Or type www.acsvis.com or 192.168.8.1 and jump to the device log-in page.

The user name is admin and the password is initial password on the label.

First Choice for Security Professionals

Note: If only use basic call and video intercom function, just set rotary switch and wire devices, there's no need to make any configuration with mobile phone.

Configuration-main door station

Link the button and the room No.

HIKVISION

Step 01

Hello, welcome.

Door Status

Door1

Controlled

Unlock Remain Open Restore

Device Component Status

Normal

Building Information

Building No. of Door Station 1

Door Station No. 0

Step 02

Configuration

System

System Settings >

User Management >

Network

Communication Settings >

Person Management >

Image

Image >

Audio >

Access Control >

Intercom >

Step 03

Intercom

Call Settings >

Press Button to Call >

Sub Module Configuration >

Step 04

Press Button to Call

No. 1

Press Button to Call ☒

Press Button to Call Call Specified Indoor Station >

Room No. 1

The button on the left is the No.2, the button on the right is the No.1

Press button to call enable means the door station can call to the indoor station

The room number can be changed manually. It is set No 1 related to room 1 by default

First Choice for Security Professionals

Note:

1. Except for the button on main module, this function is usually used for nametag DS-KD-KK module and alarm input DS-KD-AL5/AL8 module
2. Maximum support 20 DS-KD-ALJ5/AL8 modules for each main module

Configuration-main door station synchronizing the devices

HIKVISION

Normal

Building Information

Building No. of Door Station 1

Door Station No. 0

Duration of Remaining Open 2

Shortcut Entry

Device Management

Person Management

Password Settings

Door Parameters

Device Management + ...

All Sub Door Station Indoor Station

Indoor Station Room No: 2

Indoor Station Room No: 2

Indoor Extension Room No: 2 Extension No: 1

Indoor Station Room No: 2

Indoor Station Room No: 2

Indoor Extension Room No: 2 Extension No: 1

Device information synchronized.

Device Management + ...

All Sub Door Station Indoor Station

Auto Sync

Indoor Station Room No: 2

Indoor Station Room No: 2

Indoor Extension Room No: 2 Extension No: 1

After synchronizing, the language and time of all Indoor stations and sub door stations will be consistent with the door station. Continue?

Cancel OK

Long press the button on the right side for 10 s to automatically synchronize device language and time.

Entering the device management>long press the button on the right side the device will prompt pairing>wait for a moment

Auto sync option has same function as long press right button for 10s
Door station will sync the time and language to sub-door station and indoor stations

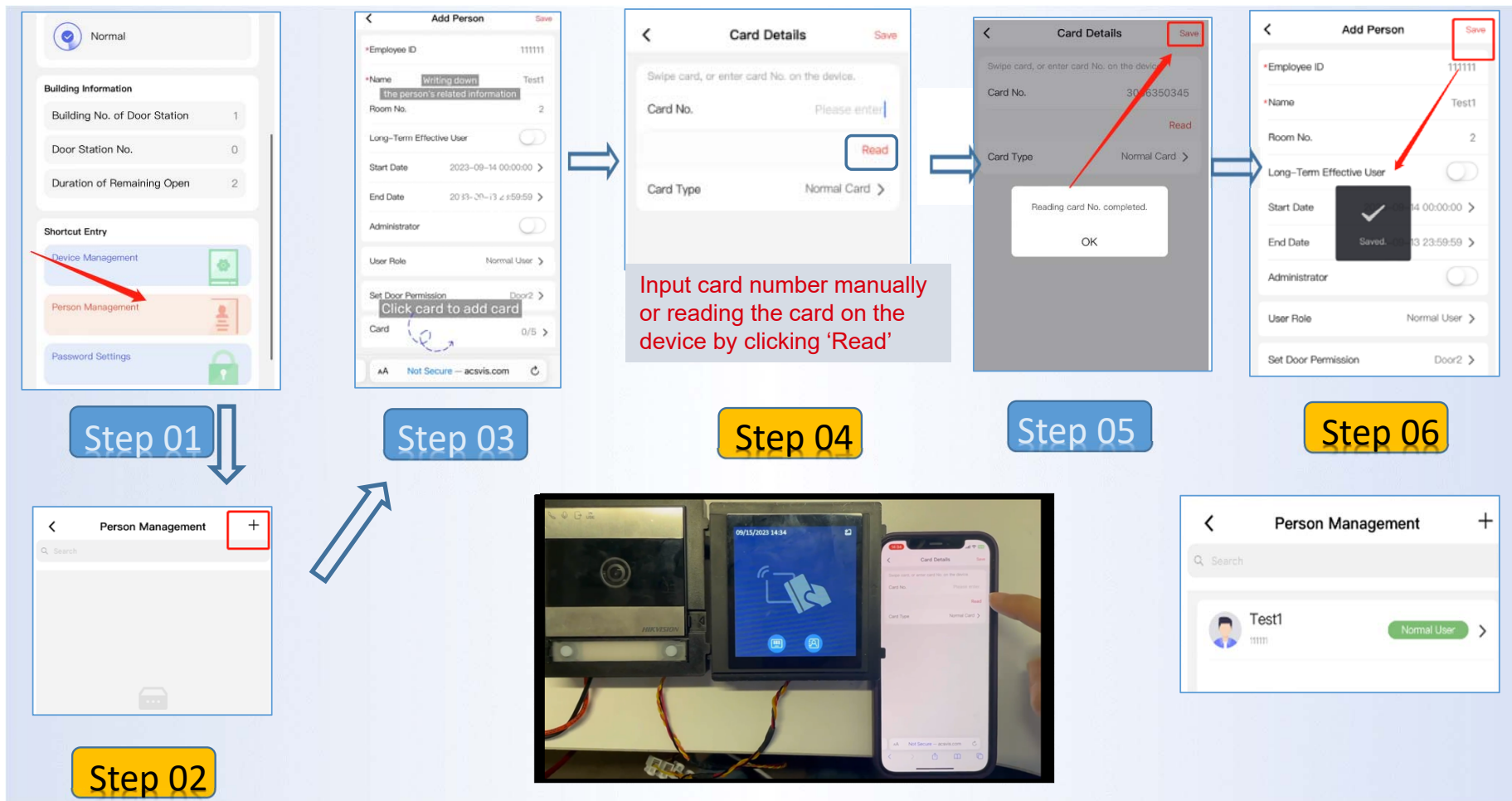
Note: If only use basic call and video intercom function, just set rotary switch and wire devices, there's no need to make any configuration with mobile phone.

First Choice for Security Professionals

Configuration-main door station

Adding card to open the door

HIKVISION



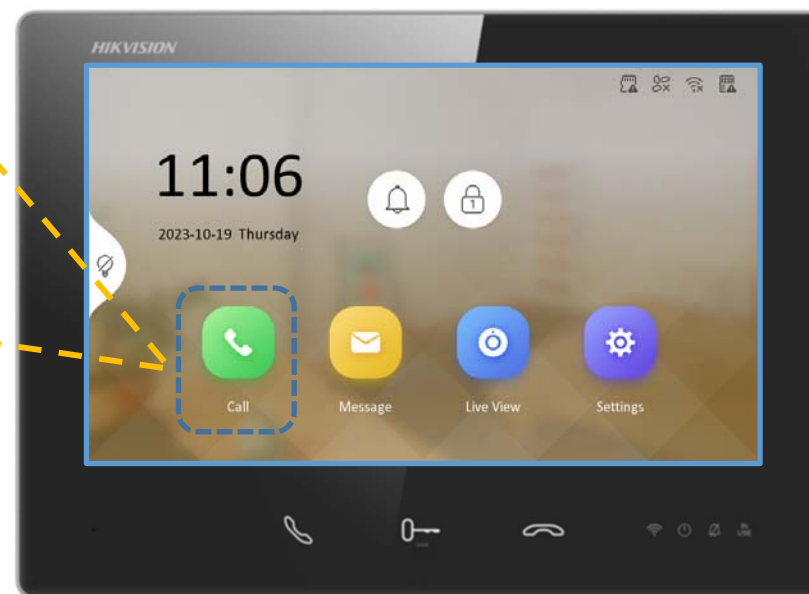
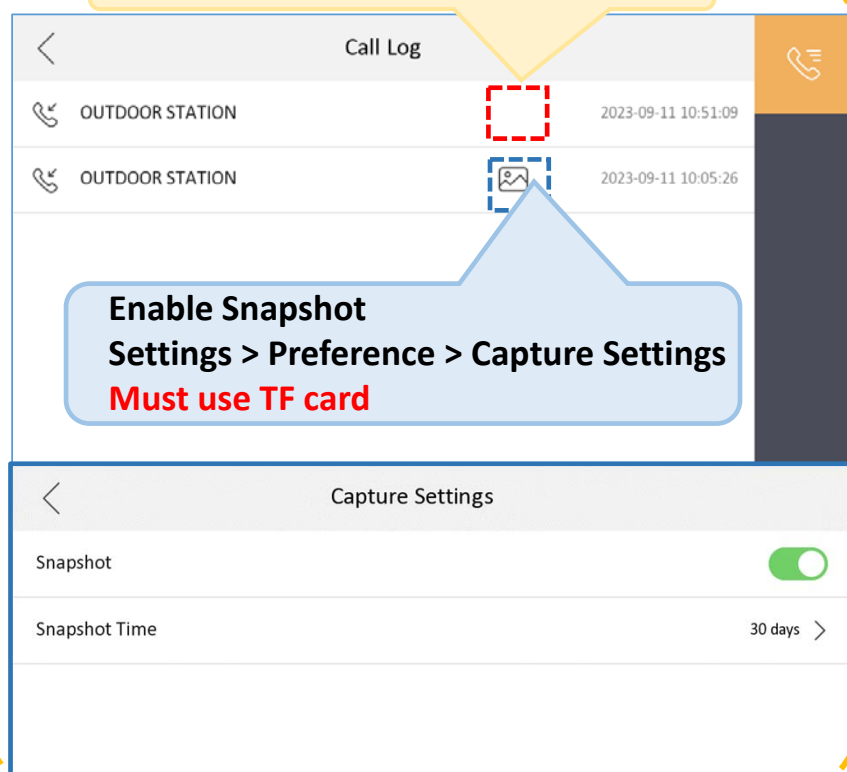
First Choice for Security Professionals

Configuration-indoor station

Snapshot setting

HIKVISION

Snapshot in the call log is disabled by default




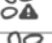

First Choice for Security Professionals

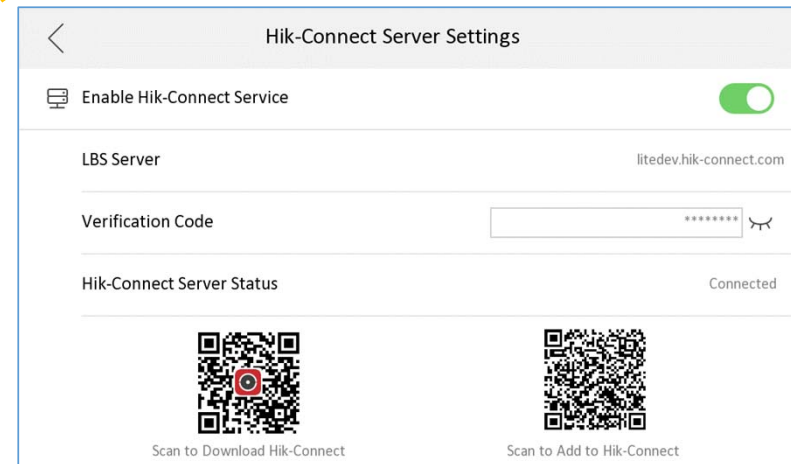
Note: The TF card should be **FAT32** format and is not included inside the package, please purchase from local market if needed.

Configuration-indoor station

Hik-Connect Setting (only for-W model)

HIKVISION

Hik-Connect Status		Device is not connected to Hik-Connect server check whether the function is enabled, check network is connected to the Internet, check DNS
		Device is connected to Hik-Connect server, but the device is not been added to any Hik-Connect app
		The server is connected and device is added to the app



Settings > Advanced Settings > Configuration > System Maintenance
Before enable Hik-Connect Server, need to connect WiFi

First Choice for Security Professionals



HIKVISION®

Thanks

International Product and Solution Center